

# Transport and Infrastructure Stats Brief Quarter 2, 2024

**E-mail:** [info@statsbots.org.bw](mailto:info@statsbots.org.bw)  
**Website:** <http://www.statsbots.org.bw>

Private Bag 0024, Gaborone  
**Tel:** 3671300 **Fax:** 3952201  
**Toll Free:** 0800 600 200

Private Bag F193,  
Francistown  
**Tel:** 241 5848 **Fax:** 241 7540

Private Bag 47  
Maun  
**Tel:** 371 5716 **Fax:** 686 4327



**STATISTICS BOTSWANA**

# **Transport and Infrastructure Stats Brief**

## Quarter 2, 2024

# Preface

This Stats Brief presents a summary of Transport and Infrastructure Statistics for Quarter 2, 2024. It covers Motor Vehicle Registrations, Rail and Air Transport statistics.

A total of 11,459 Motor Vehicles were registered for the first time in Q2 2024. Out of this total, 80.6 percent were used vehicles. Brand new and rebuilt vehicles made up 19.3 and 0.1 percent of the total respectively. Motor Vehicle Licenses renewed this quarter were 143,534, an increase of 13.9 percent from the previous quarter.

During Q2 2024, a total of 274,681 net tonnes of goods were transported using rail and the revenue generated thereof amounted to P65.4 million. The volume of goods transported increased by 2.4 percent while revenue increased by 0.7 percent.

Aircraft movements increased by 65.6 percent from the 12,509 movements recorded in the previous quarter to 20,712 movements in Q2 2024. A total of 224,485 passenger movements were recorded, of which 54.9 percent were international and 45.1 percent were domestic.

For more information and further enquiries, contact the Directorate of Stakeholder Relations at +267 367 1300. This publication, and all other Statistics Botswana outputs/ publications are available on the website at (<http://www.statsbots.org.bw>) and at the Statistics Botswana Information Resource Centre (Head-Office, Gaborone).

Statistics Botswana acknowledges and extends gratitude to the various Government departments and/or organizations that provided information for this publication.



---

**Phetogo P. Zambezi**  
**Acting Statistician General**  
**October 2024**

# 1. Motor Vehicle Registration

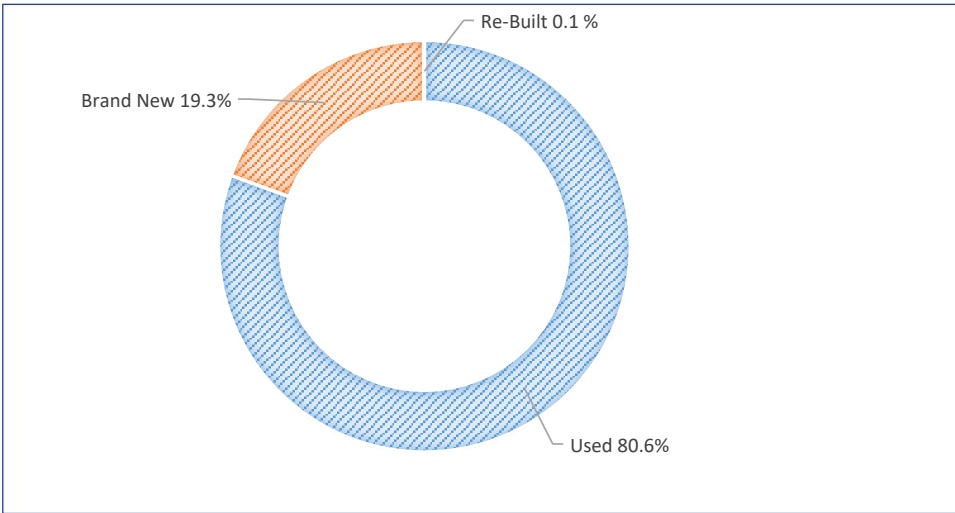
## 1.1 Motor Vehicles Registered for the First Time

A total of 11,459 motor vehicles were registered for the first time in Q2 2024, this was an increase of 8.8 percent when compared to the previous quarter. Passenger cars made up 75.8 percent of motor vehicles registered for the first time, followed by vans and trailers at 9.0 and 5.5 percent respectively. Motor cycles registered the least number with 0.4 percent of the total. See **Table 1** in **Appendix 1**.

Motor vehicles originating from Japan accounted for most of the motor vehicles on first registration, at 68.3 percent of the total. The Republic of South Africa followed with 21.8 percent of the total.

Used vehicles accounted for 80.6 percent of the total vehicles registered for the first time while brand new ones made up 19.3 percent. Rebuilt vehicles accounted for 0.1 percent of the total, with 57.1 percent of them being passenger cars. Majority of the brand new vehicles were from the Republic of South Africa, at 80.9 percent while 84.3 percent of the used vehicles were from Japan. See **Figure 1** below, **Tables 2** and **3** in **Appendix 1**.

**Figure 1: Percentage contribution of Motor Vehicles Registered for the first time by Motor Vehicle Type, Q2 2024**



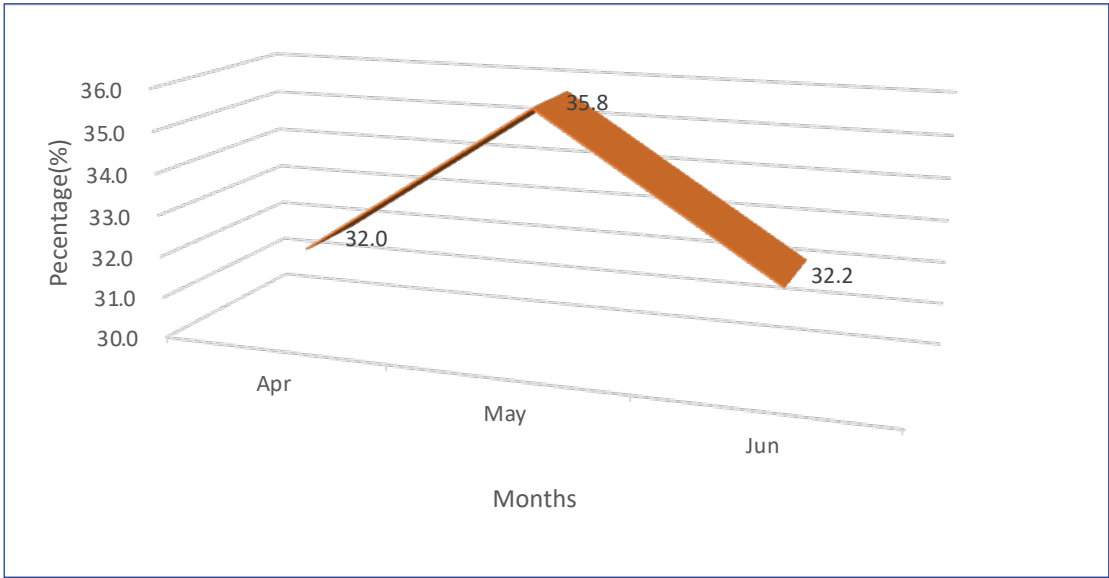
Mazda vehicles dominated in motor vehicles registered for the first time in Q2 2024, constituting 20.4 percent of the total. Toyota and Honda vehicles followed with 19.5 and 19.0 percent of the total respectively. The bulk of first registrations were done in May with 37.4 percent of the total. June and April registered 32.1 and 30.4 percent of the first registrations respectively. This is shown **Table 4** and **5** in **Appendix 1**

Gaborone recorded the highest number of motor vehicles on first registration at 66.0 percent of the total. Francistown and Lobatse stations followed with 8.5 and 5.3 percent of the total respectively. See **Table 6** in **Appendix 1**

1.2 Motor Vehicle License Renewals

Motor vehicle license renewals in Q2 2024 totaled 143,534, an increase of 13.9 percent from the previous quarter. The majority of motor vehicle license renewals were recorded in May which accounted for 35.8 percent of the total. June and April constituted 32.2 and 32.0 percent of the total motor vehicle license renewals respectively. See **Figure 2** below, **Tables 7** and **8** in **Appendix 1**.

Figure 2: Motor Vehicles License Renewals by Month, April - June 2024



Most of the motor vehicles whose licenses were renewed were Toyota and they accounted for 42.8 percent of total. License renewals for Mazda and Honda made up 9.4 and 8.8 percent of total motor vehicle license renewals respectively. See **Table 9** in **Appendix 1**.

# Rail Transport

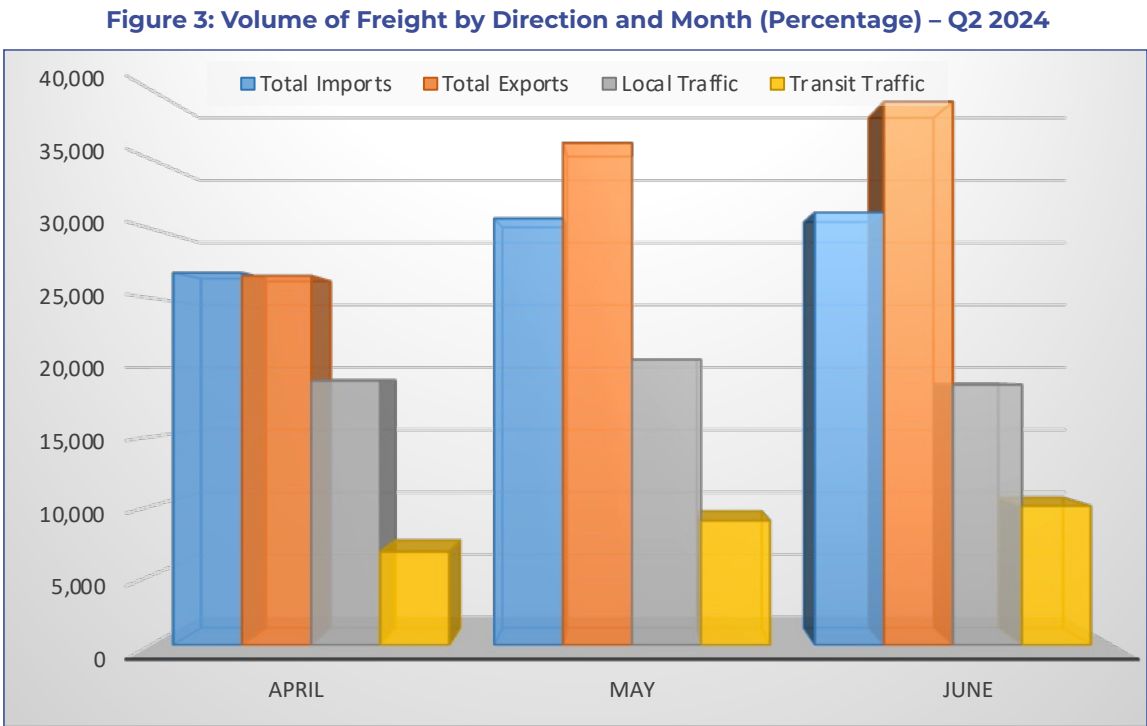
A total of  
**274,681 net  
tonnes** of  
freight was  
transported  
through rail in  
**Q2 2024.**



## 2. Rail Transport

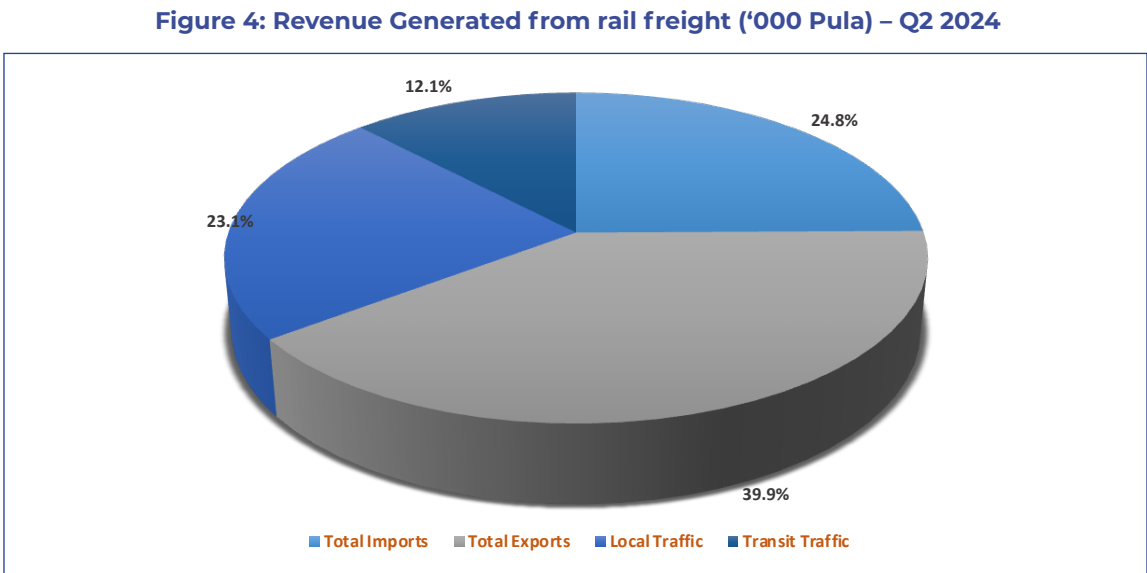
### 2.1 Goods Transported Through Rail

A total of 274,681 net tonnes of freight was transported through rail in Q2 2024, an increase of 2.4 percent when compared to the 268,247 tonnes recorded in the previous quarter. Total imports went up by 64.1 percent while total exports increased by 38.3 percent. Botswana total (an addition of total imports and goods that originated from Botswana) made up 90.6 percent of total goods transported. Goods that originated from Botswana accounted for 58.3 percent of the total. See [Table 10](#) in [Appendix 2](#) and [Figure 3](#).



### 2.2 Revenue Generated from Goods Transported Through Rail

An increase of 0.7 percent in revenue generated from transportation of rail freight was recorded during the quarter under review, from P65.0 million recorded in the previous quarter to P65.4 million. Most of the revenue was generated from Total Exports at 39.9 percent, followed by Total Imports at 24.8 percent. Local traffic and transit traffic accounted for 23.1 and 12.1 percent of the total respectively. During the month of June, total revenue of P23.4 million was generated, which was 35.7 percent of the total. The months of May and April contributed 34.7 and 29.6 percent respectively. See [Table 11](#) in [Appendix 2](#) and [Figure 4](#).





# Air Passenger Movement

Out of these, **81.2 percent** were domestic while international movements constituted **18.8 percent**





### 3. Air Transport

#### 3.1 Aircraft Movements

Aircraft movements recorded this quarter stood at 20,712, a 65.6 percent increase when compared to the 12,509 movements recorded in Q1 2024. Out of these, 81.2 percent were domestic while international movements constituted 18.8 percent. When compared to the previous quarter both types of movements increased; domestic movements increased by 77.9 percent while international movements increased by 27.4 percent. This is as shown in [Table 12](#) in [Appendix 3](#).

Figure 5: International and Domestic Aircraft Movements Quarter - to - Quarter Percentage Changes

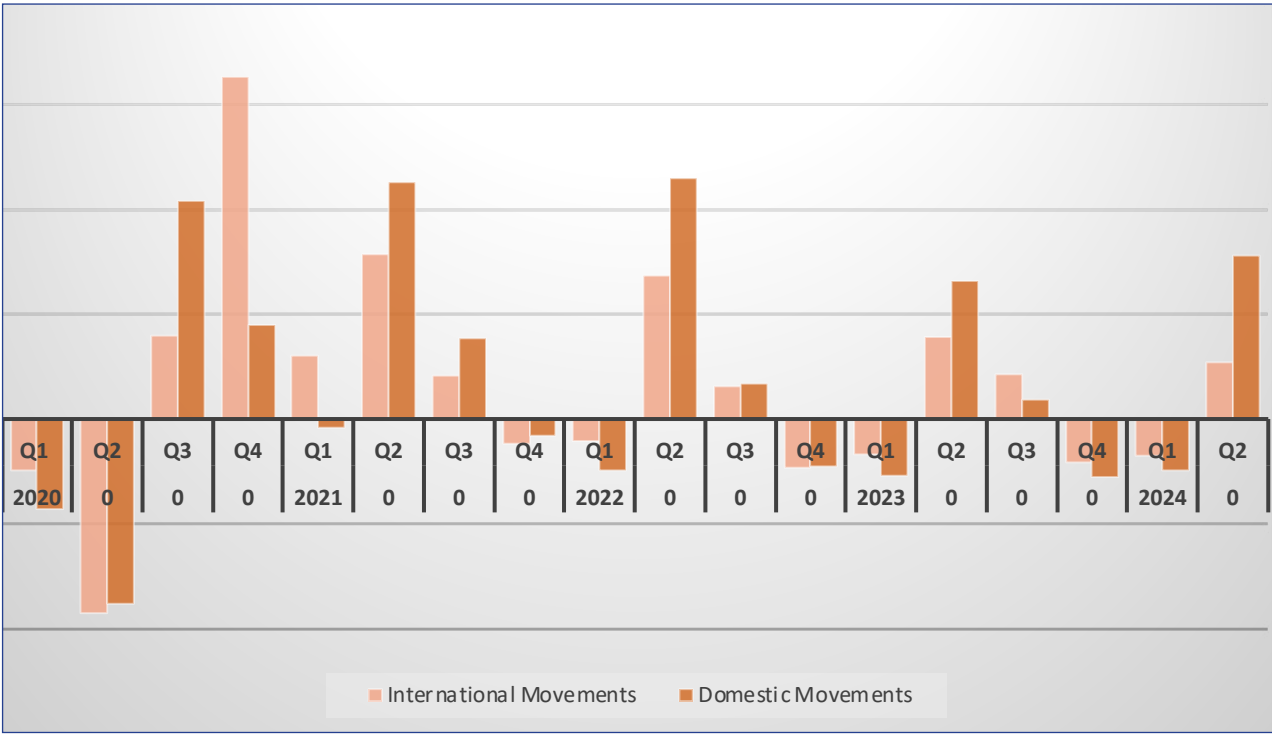


Figure 5 above shows quarterly changes for both domestic and international aircraft movements..

During this quarter, 76.3 percent of the aircraft movements were non-scheduled and the majority of these (91.1 percent) were domestic. Scheduled movements made up 15.8 percent of the total aircraft movements with 72.5 percent of them being international. Scenic aircraft movements made up 5.8 percent and constituted 7.1 percent of total domestic aircraft movements. As shown in [Table 13a](#) in [Appendix 3](#)

Non-scheduled arrivals made up 38.3 percent of the total aircraft movements while non-scheduled departures constituted 38.1 percent. Both domestic non-scheduled arrivals and departures accounted for 91.1 percent each of total movements. International non-scheduled arrivals and departures constituted 8.9 percent each. Though that's the case, non-scheduled arrivals made up 43.0 percent of the total domestic aircraft movements while non-schedule departures made up 42.7 percent of the domestic movements. See [Table 13b](#) in [Appendix 3](#)

Aircraft movements recorded at Maun airport constituted 67.5 percent of the total aircraft movements recorded this quarter. Maun airport recorded an increase of 75.1 percent in aircraft movements from 7,983 movements registered in Q1 2024. All airports except Ghanzi recorded increases in aircraft movements; aircraft movements for Ghanzi declined by 15.4 percent. See [Table 14](#) in [Appendix 3](#).

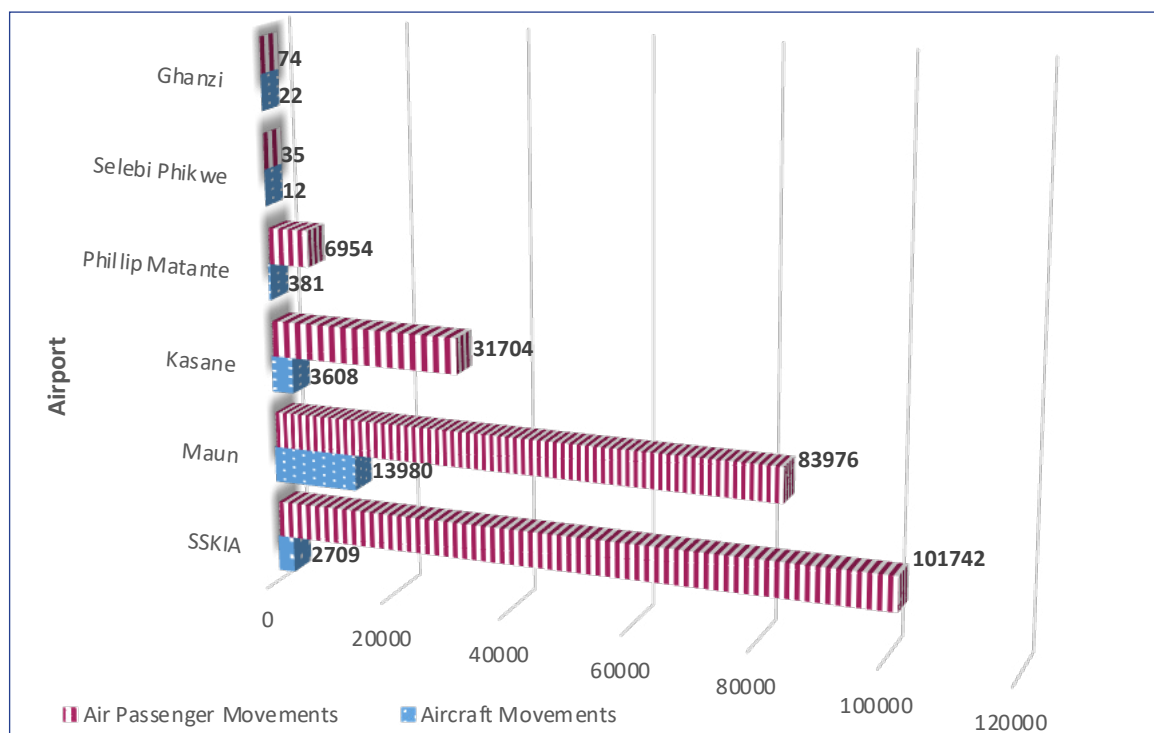
### 3.2 Air Passenger Movement

During the quarter under review, 224,485 passenger movements were recorded, of which 54.9 percent were international movements and 45.1 percent were domestic. Passenger movements went up by 38.8 percent from 161,472 in the previous quarter. Domestic passenger movements increased by 47.1 percent while international movements went up by 32.6 percent. See [Table 15](#) in [Appendix 3](#).

Scheduled movements made up the majority of the air passenger movements at 72.3 percent. These were followed by non-scheduled movements at 25.0 percent while scenic and private movements stood at 1.8 percent and 0.9 percent respectively. Compared to the previous quarter, passenger movements increased for all the flight types; scenic movements went up by over 100 percent, non-scheduled movements went up by 83.6 percent while private and scheduled movements increased by 41.4 percent and 26.7 percent respectively. This is shown in [Table 16](#) in [Appendix 3](#).

Sir Seretse Khama International Airport (SSKIA) recorded the highest number of air passenger movements with 45.3 percent. Of these movements, 97.0 percent were scheduled, making SSKIA the airport with the highest number of scheduled passenger movements with 60.8 percent. Maun airport recorded the second highest number of air passenger movements with 37.4 percent and had the highest number of non-scheduled passenger movements with 67.6 percent. Scenic passenger movements for Maun stood at 95.0 percent while the remaining 5.0 percent were recorded at Kasane airport. [Table 17](#) in [Appendix 3](#).

**Figure 6: Number of Aircraft Movements and Air passenger movements, Q2**



**Figure 6** above shows aircraft and passenger movements in airports in Botswana. SSKIA has fewer aircraft movements than Maun but has the highest number of passenger movements. This is because most of the aircraft movements for SSKIA are international therefore carry a larger quantity of passengers compared to Maun airport with the majority of the aircraft movements being domestic and carrying less number of passengers.

# Appendices





# Appendix 1: Motor Vehicle Registration

Table 1: Motor Vehicles Registered for the first time by Body Type and Quarter, Q1 2021 - Q2 2024

Year/Quarter		Motor Vehicle Body Type									Total
		Passenger Cars	Vans	Trucks	Buses	Motor Cycles	Tractors	Trailers	Tankers\Horses	Others	
2021	Q1	9,412	1,177	777	292	39	213	637	95	98	12,740
	Q2	7,579	893	707	195	29	134	645	101	115	10,398
	Q3	7,326	945	719	239	54	172	816	90	133	10,494
	Q4	7,426	786	553	156	33	277	648	123	61	10,063
2022	Q1	5,648	846	490	185	55	121	474	99	56	7,974
	Q2	5,632	682	450	165	60	79	521	93	45	7,727
	Q3	5,731	821	479	162	70	111	602	69	50	8,095
	Q4	5,679	951	427	143	75	182	581	113	57	8,208
2023	Q1	5,177	915	370	139	18	98	453	79	73	7,322
	Q2	6,829	877	438	172	39	70	547	110	92	9,174
	Q3	8,128	1,117	495	192	28	99	624	92	101	10,876
	Q4	8,621	976	460	199	123	213	725	142	81	11,540
2024	Q1	7,678	1,274	447	211	34	146	542	123	79	10,534
	Q2	8,689	1,028	544	210	47	139	628	91	83	11,459
Percent of total											
2020	Q1	67.8	12.7	6.9	3.0	0.3	1.6	6.0	0.9	0.8	100
	Q2	69.5	9.8	8.3	2.2	0.7	1.9	5.9	0.8	0.9	100
	Q3	72.1	8.4	6.9	1.9	0.5	1.3	6.9	1.0	0.8	100
	Q4	74.6	6.9	6.1	1.8	0.7	2.4	6.0	0.9	0.6	100
2021	Q1	73.9	9.2	6.1	2.3	0.3	1.7	5.0	0.7	0.8	100
	Q2	72.9	8.6	6.8	1.9	0.3	1.3	6.2	1.0	1.1	100
	Q3	69.8	9.0	6.9	2.3	0.5	1.6	7.8	0.9	1.3	100
	Q4	73.8	7.8	5.5	1.6	0.3	2.8	6.4	1.2	0.6	100
2022	Q1	70.8	10.6	6.1	2.3	0.7	1.5	5.9	1.2	0.7	100
	Q2	72.9	8.8	5.8	2.1	0.8	1.0	6.7	1.2	0.6	100
	Q3	70.8	10.1	5.9	2.0	0.9	1.4	7.4	0.9	0.6	100
	Q4	69.2	11.6	5.2	1.7	0.9	2.2	7.1	1.4	0.7	100
2023	Q1	70.7	12.5	5.1	1.9	0.2	1.3	6.2	1.1	1.0	100
	Q2	74.4	9.6	4.8	1.9	0.4	0.8	6.0	1.2	1.0	100
	Q3	74.7	10.3	4.6	1.8	0.3	0.9	5.7	0.8	0.9	100
	Q4	74.7	8.5	4.0	1.7	1.1	1.8	6.3	1.2	0.7	100
2024	Q1	72.9	12.1	4.2	2.0	0.3	1.4	5.1	1.2	0.7	100
	Q2	75.8	9.0	4.7	1.8	0.4	1.2	5.5	0.8	0.7	100
Quarter - to - Quarter Percentage Change											
2020	Q1	(52.2)	6.5	(31.0)	(46.8)	(37.3)	(32.0)	(18.4)	(31.3)	3.9	(45.0)
	Q2	(47.6)	(60.5)	(38.8)	(62.8)	18.8	(38.4)	(50.0)	(51.1)	(41.3)	(48.9)
	Q3	132.1	90.5	87.4	98.3	68.4	57.4	165.0	172.7	110.6	123.8
	Q4	25.2	0.5	6.1	13.6	53.1	111.9	4.2	11.7	(7.1)	21.1
2021	Q1	(11.8)	18.6	(10.8)	12.7	(60.2)	(36.8)	(25.3)	(29.1)	6.5	(11.0)
	Q2	(19.5)	(24.1)	(9.0)	(33.2)	(25.6)	(37.1)	1.3	6.3	17.3	(18.4)
	Q3	(3.3)	5.8	1.7	22.6	86.2	28.4	26.5	(10.9)	15.7	0.9
	Q4	1.4	(16.8)	(23.1)	(34.7)	(38.9)	61.0	(20.6)	36.7	(54.1)	(4.1)
2022	Q1	(23.9)	7.6	(11.4)	18.6	66.7	(56.3)	(26.9)	(19.5)	(8.2)	(20.8)
	Q2	(0.3)	(19.4)	(8.2)	(10.8)	9.1	(34.7)	9.9	(6.1)	(19.6)	(3.1)
	Q3	1.8	20.4	6.4	(1.8)	16.7	40.5	15.5	(25.8)	11.1	4.8
	Q4	(0.9)	15.8	(10.9)	(11.7)	7.1	64.0	(3.5)	63.8	14.0	1.4
2023	Q1	(8.8)	(3.8)	(13.3)	(2.8)	(76.0)	(46.2)	(22.0)	(30.1)	28.1	(10.8)
	Q2	31.9	(4.2)	18.4	23.7	116.7	(28.6)	20.8	39.2	26.0	25.3
	Q3	19.0	27.4	13.0	11.6	(28.2)	41.4	14.1	(16.4)	9.8	18.6
	Q4	6.1	(12.6)	(7.1)	3.6	339.3	115.2	16.2	54.3	(19.8)	6.1
2024	Q1	(10.9)	30.5	(2.8)	6.0	(72.4)	(31.5)	(25.2)	(13.4)	(2.5)	(8.7)
	Q2	13.2	(19.3)	21.7	(0.5)	38.2	(4.8)	15.9	(26.0)	5.1	8.8

Source:DRTS, Ministry of Transport and Public Works

**Table 2: Motor Vehicles Reigistered for the first time by Vehicle Type and Country of Origin, Q2 2024**

Country of Origion	Motor Vehicle Type			
	Used	Brand New	Rebuilt	Total
Botswana	223	167	1	391
Japan	7,787	37	4	7,828
Republic Of South Africa	706	1,794	2	2,502
United Kingdom	61	5	-	66
Other countries of origin	458	214	-	672
<b>Total</b>	<b>9,235</b>	<b>2,217</b>	<b>7</b>	<b>11,459</b>
Percent of Total				
Botswana	57.0	42.7	0.3	100
Japan	99.5	0.5	0.1	100
Republic Of South Africa	28.2	71.7	0.1	100
United Kingdom	92.4	7.6	-	100
Other countries of origin	68.2	31.8	-	100
<b>Total</b>	<b>80.6</b>	<b>19.3</b>	<b>0.1</b>	<b>100</b>
Percent of Total				
Botswana	2.4	7.5	14.3	3.4
Japan	84.3	1.5	57.1	68.3
Republic Of South Africa	7.6	80.9	28.6	21.8
United Kingdoms	0.7	0.2	-	0.6
Other countries of origin	5.0	9.7	-	5.9
<b>Total</b>	<b>100</b>	<b>100</b>	<b>100</b>	<b>100</b>

**Source:** DRTS, Ministry of Transport and Public Works  
Other countries of origin includes Zambia,Zimbabwe,Singapore,Germany, etc

**Table 3: Motor Vehicles Registered for the first time by Body Type and Vehicle Type, Q2 2024**

Motor Vehicle Type	Motor Vehicle Body Type										
	Passenger Cars	Vans	Trucks	Mini Buses	Buses	Motor cycles	Tractors	Trailers	Tankers/ Horses	Others	Total
Used	7,953	274	429	161	23	7	22	310	43	13	9,235
Brand New	732	753	114	13	13	40	117	317	48	70	2,217
Re-Built	4	1	1	-	-	-	-	1	-	-	7
<b>Total</b>	<b>8,689</b>	<b>1,028</b>	<b>544</b>	<b>174</b>	<b>36</b>	<b>47</b>	<b>139</b>	<b>628</b>	<b>91</b>	<b>83</b>	<b>11,459</b>
Percent of Total											
Used	91.5	26.7	78.9	92.5	63.9	14.9	15.8	49.4	47.3	15.7	80.6
Brand New	8.4	73.2	21.0	7.5	36.1	85.1	84.2	50.5	52.7	84.3	19.3
Re-Built	0.0	0.1	0.2	0.0	0.0	0.0	0.0	0.2	0.0	0.0	0.1
<b>Total</b>	<b>100</b>	<b>100</b>	<b>100</b>	<b>100</b>	<b>100</b>	<b>100</b>	<b>100</b>	<b>100</b>	<b>100</b>	<b>100</b>	<b>100</b>
Percent of Total											
Used	86.1	3.0	4.6	1.7	0.2	0.1	0.2	3.4	0.5	0.1	100
Brand New	33.0	34.0	5.1	0.6	0.6	1.8	5.3	14.3	2.2	3.2	100
Re-Built	57.1	14.3	14.3	0.0	0.0	0.0	0.0	14.3	0.0	0.0	100
<b>Total</b>	<b>75.8</b>	<b>9.0</b>	<b>4.7</b>	<b>1.5</b>	<b>0.3</b>	<b>0.4</b>	<b>1.2</b>	<b>5.5</b>	<b>0.8</b>	<b>0.7</b>	<b>100</b>

**Source:** Department of Road Transport and Safety, Ministry of Transport and Public Works



**Table 4: Motor Vehicles Registered for the first time by Body Type and Make of Vehicle, Q2 2024**

Make	Motor Vehicle Body Type											
	Passenger Cars	Vans	Trucks	Mini Buses	Buses	Motor Cycles	Tractors	Trailers	Tankers\Horses	Others	Total	Percent of Total
Audi	420	-	-	-	-	-	-	-	-	-	420	3.7
BMW	228	-	-	-	-	-	-	-	-	-	228	2.0
Chevrolet	-	2	-	-	-	-	-	-	-	-	2	0.0
Chrysler	1	-	-	-	-	-	-	-	-	-	1	0.0
Daewoo	-	-	-	-	-	-	-	-	-	-	-	-
Dodge	4	-	-	-	-	-	-	-	-	-	4	0.0
Ford	16	192	2	-	1	-	1	-	-	-	212	1.9
Hino	-	-	50	-	5	-	-	-	2	-	57	0.5
Home-made	-	-	-	-	-	-	-	237	1	-	238	2.1
Honda	2,167	-	2	-	-	5	-	-	-	-	2,174	19.0
Hyundai	17	-	5	2	-	-	-	-	-	-	24	0.2
Isuzu	1	116	16	-	-	-	-	-	-	-	133	1.2
Iveco	-	-	3	1	3	-	-	-	-	-	7	0.1
Jeep	42	1	-	-	-	-	-	-	-	-	43	0.4
Kia	7	-	-	-	-	-	-	-	-	-	7	0.1
Land Rover	51	2	-	-	-	-	-	-	-	-	53	0.5
Lexus	143	-	-	-	-	-	-	-	-	-	143	1.2
Mahindra	1	9	-	-	-	-	-	-	-	-	10	0.1
MAN	-	-	10	-	-	-	-	-	4	-	14	0.1
Massey Ferguson	-	-	-	-	-	-	46	-	-	-	46	0.4
Mazda	2,315	1	24	2	-	-	-	-	-	-	2,342	20.4
Mercedes - Benz	375	4	7	3	7	-	1	-	10	3	410	3.6
Mitsubishi	11	2	19	1	1	-	-	-	-	2	36	0.3
Nissan	250	106	64	24	5	-	1	-	1	-	451	3.9
Opel	-	1	-	-	-	-	-	-	-	-	1	0.0
Peugeot	3	-	-	-	-	-	-	-	-	-	3	0.0
Renault	3	-	1	-	-	-	-	-	-	-	4	0.0
Scania	-	-	18	-	2	-	-	-	-	-	20	0.2
Subaru	17	-	-	-	-	-	-	-	-	-	17	0.1
Tata	1	1	8	-	2	-	-	-	-	-	12	0.1
Toyota	1,307	555	226	140	6	-	-	-	-	2	2,236	19.5
Volkswagen(VW)	1,042	20	-	1	-	-	-	-	-	-	1,063	9.3
Volvo	87	-	7	-	-	-	-	-	-	-	94	0.8
Yamaha	-	-	-	-	-	-	11	-	-	22	33	0.3
Other	180	16	82	-	4	42	79	391	73	54	921	8.0
<b>Total</b>	<b>8,689</b>	<b>1,028</b>	<b>544</b>	<b>174</b>	<b>36</b>	<b>47</b>	<b>139</b>	<b>628</b>	<b>91</b>	<b>83</b>	<b>11,459</b>	<b>100</b>

**Source :**Department of Road Transport and Safety,Ministry of Transport and Public Works

**Table 5: Motor Vehicles Registered for the first time by Body Type and Month, January 2020 - March 2024**

Year	Month	Motor Vehicle Body Type										Total
		Passenger Cars	Vans	Trucks	Mini Buses	Buses	Motor Cycles	Tractors	Trailers	Tanker/Horses	Others	
2020	January	3,037	399	249	117	11	4	66	171	36	17	4,107
	February	1,578	421	198	58	15	9	50	218	18	28	2,593
	March	2,391	491	269	91	17	19	48	229	36	35	3,626
	April	353	48	33	13	3	1	4	29	1	3	488
	May	703	109	119	22	6	1	16	58	12	8	1,054
	June	2,615	361	286	62	9	36	81	222	31	36	3,739
	July	2,755	346	294	74	13	19	54	252	50	19	3,876
	August	2,454	321	215	40	19	22	47	220	40	39	3,417
	September	3,312	320	312	68	14	23	58	347	30	41	4,525
	October	3,034	244	273	79	12	39	97	286	65	23	4,152
	November	3,412	354	323	74	9	16	116	270	36	42	4,652
	December	4,226	394	275	69	16	43	124	297	33	27	5,504
2021	January	2,703	302	203	72	4	11	79	197	27	23	3,621
	February	2,836	414	262	72	8	12	67	186	31	25	3,913
	March	3,873	461	312	95	41	16	67	254	37	50	5,206
	April	2,830	278	252	54	16	10	57	243	33	50	3,823
	May	2,181	306	231	45	12	3	43	180	26	28	3,055
	June	2,575	314	212	54	14	16	34	222	42	37	3,520
	July	2,317	292	235	77	19	11	42	294	31	44	3,362
	August	2,566	347	266	69	11	20	46	305	31	41	3,702
	September	2,443	306	218	51	12	23	84	217	28	48	3,430
	October	2,156	282	184	37	10	16	105	177	46	29	3,042
	November	2,467	285	187	46	13	7	80	260	31	14	3,390
	December	2,803	219	182	46	4	10	92	211	46	18	3,631
2022	January	1,618	210	121	33	4	15	38	118	29	9	2,195
	February	1,880	250	167	61	11	17	48	167	24	30	2,655
	March	2,150	386	202	70	6	23	35	189	39	24	3,124
	April	1,815	225	160	41	11	19	24	166	31	9	2,501
	May	1,795	223	138	50	5	22	18	129	27	20	2,427
	June	2,022	234	152	48	10	19	37	226	35	16	2,799
	July	1,747	184	129	34	14	21	33	193	25	18	2,398
	August	2,104	311	187	49	13	24	39	197	19	15	2,958
	September	1,880	326	163	40	12	25	39	212	25	17	2,739
	October	1,559	265	125	27	9	26	27	159	26	14	2,237
	November	1,996	358	163	47	13	32	66	174	45	21	2,915
	December	2,124	328	139	31	16	17	89	248	42	22	3,056

**Source:**Department of Road Transport and Safety, Ministry of Transport and Public Works

**Table 5: Motor Vehicles Registered for the first time by Body Type and Month, January 2020 - March 2024 (continued)**

2023	January	1,438	210	109	23	7	4	38	137	9	18	1,993
	February	1,588	318	113	39	6	5	22	118	18	31	2,258
	March	2,151	387	148	52	12	9	38	198	52	24	3,071
	April	1,835	273	125	41	11	26	25	165	53	30	2,584
	May	2,312	264	149	56	12	2	21	163	31	26	3,036
	June	2,682	340	164	45	7	11	24	219	26	36	3,554
	July	2,390	328	129	42	11	11	26	211	30	25	3,203
	August	2,927	384	184	57	9	12	33	232	35	44	3,917
	September	2,811	405	182	59	14	5	40	181	27	32	3,756
	October	2,577	314	144	63	3	53	69	206	71	26	3,526
	November	2,856	357	166	47	19	32	81	229	38	38	3,863
	December	3,188	305	150	51	16	38	63	290	33	17	4,151
2024	January	2,410	399	129	56	5	14	63	136	34	17	3,263
	February	2,493	361	155	50	10	12	41	214	66	31	3,433
	March	2,775	514	163	71	19	8	42	192	23	31	3,838
	April	2,558	357	184	44	12	13	41	217	33	26	3,485
	May	3,364	346	175	69	12	15	53	212	25	19	4,290
	June	2,767	325	185	61	12	19	45	199	33	38	3,684

Source: Department of Road Transport and Safety, Ministry of Transport and Public Works

**Table 6: Motor Vehicles Registered for the first time by Body Type and Station, Q2 2024**

Station	Motor Vehicle Body Type										Total	Percent of Total
	Passenger Cars	Vans	Trucks	Mini Buses	Buses	Motor Cycles	Tractors	Trailers	Tankers\Horses	Others		
Bobonong	5	1	-	-	-	-	2	4	-	-	12	0.1
Francistown	744	100	47	18	2	2	5	56	2	1	977	8.5
Gaborone	6,125	536	309	127	24	27	33	296	40	46	7,563	66.0
Ghanzi	12	5	5	-	-	-	1	13	-	-	36	0.3
Gumare	4	1	-	-	-	-	-	-	-	-	5	0.0
Jwaneng	33	7	-	1	-	-	6	11	2	2	62	0.5
Kang	5	2	-	1	-	-	-	-	-	-	8	0.1
Kanye	7	2	-	-	-	-	2	2	-	-	13	0.1
Kasane	25	47	-	4	2	-	-	1	1	-	80	0.7
Letlhakane	45	3	2	2	1	-	2	6	-	-	61	0.5
Lobatse	410	13	46	6	-	3	4	90	33	6	611	5.3
Mahalapye	101	60	2	2	-	-	3	9	-	-	177	1.5
Masunga	1	-	-	-	-	-	2	-	-	-	3	0.0
Maun	204	104	9	3	-	-	3	32	-	-	355	3.1
Mochudi	24	2	15	-	-	13	53	15	5	13	140	1.2
Molepolole	441	14	62	1	-	1	5	31	1	1	557	4.9
Palapye	192	5	22	6	1	1	2	33	1	2	265	2.3
Ramotswa	145	65	19	1	2	-	11	5	6	9	263	2.3
S/Phikwe	83	29	4	-	2	-	2	14	-	3	137	1.2
Serowe	70	29	2	2	2	-	1	6	-	-	112	1.0
Shakawe	2	1	-	-	-	-	-	-	-	-	3	0.0
Sowa	2	-	-	-	-	-	-	1	-	-	3	0.0
Tsabong	5	1	-	-	-	-	-	3	-	-	9	0.1
Tutume	4	1	-	-	-	-	2	-	-	-	7	0.1
Total	8,689	1,028	544	174	36	47	139	628	91	83	11,459	100

Source: Department of Road Transport and Safety, Ministry of Transport and Public Works

Table 7: Motor Vehicles Licence Renewals by Body Type and Year & Quarter, 2014 - Q2 2024

Year/ Quarter		Motor Vehicle Body Type								Total	
		Passenger Cars	Vans	Trucks	Buses	Motor Cycles	Tractors	Trailers	Tankers/ Horses		Others
2014		221,469	96,397	22,751	14,465	1,419	5,333	17,760	2,513	2,006	384,113
2015		243,358	97,885	23,926	15,651	1,495	5,657	18,773	2,515	2,101	411,361
2016		263,322	99,271	25,597	16,681	2,037	5,846	19,720	2,525	2,100	437,099
2017		284,898	99,333	26,955	17,733	1,563	5,966	21,016	2,508	2,222	462,194
2018		305,453	99,278	28,696	18,441	1,486	5,719	21,820	2,742	2,134	485,769
2019		333,743	100,948	31,222	19,457	1,479	5,777	23,315	3,042	2,180	521,163
2020		336,584	101,738	32,509	18,406	1,583	5,805	23,445	3,161	2,116	525,347
2021		360,697	106,018	34,640	19,061	1,551	5,799	25,669	3,526	2,370	559,331
2022		360,149	104,478	33,960	18,315	1,753	5,345	26,748	3,601	2,190	556,539
2023		368,456	104,980	34,602	18,232	1,820	6,056	27,641	3,941	2,410	568,138
2021	Q1	77,707	25,037	7,950	4,604	346	1,124	5,487	749	617	123,621
	Q2	84,094	24,946	8,335	4,338	349	1,021	5,692	822	571	130,168
	Q3	97,332	28,270	9,601	5,022	468	1,539	7,159	1,039	649	151,079
	Q4	101,564	27,765	8,754	5,097	388	2,115	7,331	916	533	154,463
2022	Q1	76,808	24,500	7,822	4,255	423	1,027	5,732	820	540	121,927
	Q2	86,251	25,476	8,610	4,448	428	1,010	6,223	953	565	133,964
	Q3	92,744	26,314	8,897	4,787	465	1,265	7,200	935	602	143,209
	Q4	104,346	28,188	8,631	4,825	437	2,043	7,593	893	483	157,439
2023	Q1	77,320	24,822	7,939	4,204	385	1,124	5,908	881	618	123,201
	Q2	87,159	25,082	8,428	4,368	449	877	6,462	1,000	617	134,442
	Q3	96,422	26,751	9,104	4,778	463	1,328	7,384	981	650	147,861
	Q4	107,555	28,325	9,131	4,882	523	2,727	7,887	1,079	525	162,634
2024	Q1	80,233	24,437	7,688	4,197	406	1,345	6,024	1,004	639	125,973
	Q2	93,980	26,339	9,184	4,319	414	1,004	6,835	994	465	143,534
Percent of Total											
2021	Q1	62.9	20.3	6.4	3.7	0.3	0.9	4.4	0.6	0.5	100
	Q2	64.6	19.2	6.4	3.3	0.3	0.8	4.4	0.6	0.4	100
	Q3	64.4	18.7	6.4	3.3	0.3	1.0	4.7	0.7	0.4	100
	Q4	65.8	18.0	5.7	3.3	0.3	1.4	4.7	0.6	0.3	100
2022	Q1	63.0	20.1	6.4	3.5	0.3	0.8	4.7	0.7	0.4	100
	Q2	64.4	19.0	6.4	3.3	0.3	0.8	4.6	0.7	0.4	100
	Q3	64.8	18.4	6.2	3.3	0.3	0.9	5.0	0.7	0.4	100
	Q4	66.3	17.9	5.5	3.1	0.3	1.3	4.8	0.6	0.3	100
2023	Q1	62.8	20.1	6.4	3.4	0.3	0.9	4.8	0.7	0.5	100
	Q2	64.8	18.7	6.3	3.2	0.3	0.7	4.8	0.7	0.5	100
	Q3	65.2	18.1	6.2	3.2	0.3	0.9	5.0	0.7	0.4	100
	Q4	66.1	17.4	5.6	3.0	0.3	1.7	4.8	0.7	0.3	100
2024	Q1	63.7	19.4	6.1	3.3	0.3	1.1	4.8	0.8	0.5	100
	Q2	65.5	18.4	6.4	3.0	0.3	0.7	4.8	0.7	0.3	100

Source: Department of Road Transport and Safety, Ministry of Transport and Public Works

**Table 8: Motor Vehicles Licence Renewals by Body Type and Month, January 2020 - March 2024**

Year/Quarter		Motor Vehicle Body Type										Total
		Passenger Cars	Vans	Trucks	Mini Buses	Buses	Motor Cycles	Tractors	Trailers	Horses/Tankers	Others	
2020	Jan	19,478	6,414	2,018	1,157	113	107	391	1,387	195	131	31,391
	Feb	24,841	8,616	2,608	1,335	147	129	351	1,857	246	212	40,342
	Mar	25,875	8,801	2,800	1,414	162	132	333	1,862	252	209	41,840
	Apr	8,543	3,008	893	340	22	42	95	604	70	29	13,646
	May	19,300	6,044	1,844	775	57	67	221	1,117	199	98	29,722
	Jun	38,951	12,085	4,061	1,967	220	204	644	2,695	362	258	61,447
	July	32,363	9,541	3,248	1,581	158	143	419	2,299	326	218	50,296
	Aug	30,690	9,145	3,001	1,479	162	162	454	2,101	304	210	47,708
	Sep	33,079	9,740	3,201	1,794	202	150	528	2,518	349	186	51,747
	Oct	31,952	9,126	2,994	1,579	143	156	786	2,238	322	199	49,495
	Nov	33,612	9,088	2,872	1,511	162	139	796	2,347	287	213	51,027
	Dec	37,900	10,130	2,969	1,718	208	152	787	2,520	249	153	56,786
2021	Jan	22,074	6,983	2,247	1,270	108	124	435	1,640	216	155	35,252
	Feb	24,394	8,041	2,593	1,316	134	94	294	1,631	244	195	38,936
	Mar	31,239	10,013	3,110	1,583	193	128	395	2,216	289	267	49,433
	Apr	26,633	8,068	2,730	1,241	121	115	304	1,858	246	186	41,502
	May	27,597	8,067	2,699	1,369	141	120	301	1,826	278	182	42,580
	Jun	29,864	8,811	2,906	1,332	134	114	416	2,008	298	203	46,086
	Jul	31,720	9,354	3,173	1,414	148	169	428	2,236	316	222	49,180
	Aug	33,616	9,504	3,374	1,528	158	160	483	2,478	375	193	51,869
	Sep	31,996	9,412	3,054	1,608	166	139	628	2,445	348	234	50,030
	Oct	29,694	8,667	2,999	1,482	167	141	732	2,287	327	178	46,674
	Nov	35,959	9,634	3,069	1,575	202	140	653	2,642	350	206	54,430
	Dec	35,911	9,464	2,686	1,489	182	107	730	2,402	239	149	53,359
2022	Jan	21,148	6,697	2,145	1,152	105	145	361	1,633	227	128	33,741
	Feb	25,469	8,103	2,645	1,229	129	128	338	1,909	258	193	40,401
	Mar	30,191	9,700	3,032	1,491	149	150	328	2,190	335	219	47,785
	Apr	25,931	7,996	2,588	1,213	158	115	284	1,932	226	167	40,610
	May	28,879	8,294	2,878	1,384	132	157	302	1,948	324	212	44,510
	Jun	31,441	9,186	3,144	1,390	171	156	424	2,343	403	186	48,844
	Jul	28,606	8,138	2,768	1,294	157	161	355	2,211	264	190	44,144
	Aug	33,773	9,579	3,293	1,583	185	157	452	2,598	348	201	52,169
	Sep	30,365	8,597	2,836	1,389	179	147	458	2,391	323	211	46,896
	Oct	23,079	6,679	2,286	1,042	101	157	432	1,704	241	121	35,842
	Nov	42,842	11,413	3,415	1,718	192	160	883	2,863	386	199	64,071
	Dec	38,425	10,096	2,930	1,592	180	120	728	3,026	266	163	57,526
2023	Jan	21,684	7,080	2,236	1,144	103	136	374	1,684	216	153	34,810
	Feb	26,150	8,517	2,680	1,256	124	121	352	1,936	277	217	41,630
	Mar	29,486	9,225	3,023	1,420	157	128	398	2,288	388	248	46,761
	Apr	24,417	7,464	2,313	1,074	141	144	208	1,872	274	190	38,097
	May	30,629	8,496	2,991	1,456	161	147	290	2,151	331	230	46,882
	Jun	32,113	9,122	3,124	1,391	145	158	379	2,439	395	197	49,463
	Jul	30,872	8,641	2,861	1,282	164	177	373	2,276	296	178	47,120
	Aug	34,164	9,529	3,416	1,579	206	142	479	2,705	347	245	52,812
	Sep	31,386	8,581	2,827	1,367	180	144	476	2,403	338	227	47,929
	Oct	31,785	8,939	3,045	1,372	149	206	1,053	2,354	426	190	49,519
	Nov	37,199	9,540	3,140	1,453	212	166	876	2,729	381	202	55,898
	Dec	38,571	9,846	2,946	1,508	188	151	798	2,804	272	133	57,217

Source: Department of Road Transport and Safety, Ministry of Transport and Public Works



**Table 8: Motor Vehicles Licence Renewals by Body Type and Month, January 2020 - March 2024(continued)**

2024	Jan	24,587	7,718	2,419	1,248	109	151	641	1,819	292	183	39,167
	Feb	26,965	8,169	2,676	1,233	147	114	407	2,049	369	212	42,341
	Mar	28,681	8,550	2,593	1,278	182	141	297	2,156	343	244	44,465
	Apr	29,632	8,756	3,070	1,243	145	131	318	2,214	276	156	45,941
	May	33,854	9,247	3,234	1,405	153	131	345	2,438	372	169	51,348
	Jun	30,494	8,336	2,880	1,224	149	152	341	2,183	346	140	46,245

Source Department of Road Transport and Safety,Ministry of Transport and Public Works

**Table 9: Motor Vehicles Licence Renewals by Body Type and Make, Q2 2024**

	Motor Vehicle Body Type										Total	Percent of Total
	Passenger Cars	Vans	Trucks	Mini Buses	Buses	Motor cycles	Tractors	Trailers	Tankers/ Horses	Others		
Make												
Audi	2,509	-	-	-	-	-	-	-	-	-	2,509	1.7
BMW	4,119	-	-	-	-	-	-	-	-	-	4,119	2.9
Chevrolet	400	218	-	-	-	-	-	-	-	-	618	0.4
Chrysler	57	-	-	1	-	-	-	-	-	-	58	0.0
Daewoo	8	-	-	-	-	-	-	-	-	-	8	0.0
Dodge	96	5	1	-	-	-	-	-	-	-	102	0.1
Ford	621	2,239	-	17	2	-	88	-	-	1	2,968	2.1
Hino	-	1	566	1	31	-	1	-	13	2	615	0.4
Home-made	-	-	-	-	-	-	-	2,238	2	4	2,244	1.6
Honda	12,558	-	6	-	-	62	-	-	-	-	12,626	8.8
Hyundai	609	38	60	18	-	-	-	-	-	1	726	0.5
Isuzu	62	2,445	208	16	12	-	-	-	6	6	2,755	1.9
Iveco	-	2	31	18	40	-	-	-	7	2	100	0.1
Jeep	636	5	-	-	-	-	-	-	-	-	641	0.4
Kia	473	41	-	-	-	-	-	-	-	1	515	0.4
Land Rover	761	269	2	1	-	-	-	-	-	1	1,034	0.7
Lexus	615	-	-	-	-	-	-	-	-	-	615	0.4
Mahindra	15	134	3	-	-	-	2	-	-	-	154	0.1
MAN	-	1	124	-	6	-	1	-	55	2	189	0.1
Massey Ferguson	-	-	-	-	-	-	535	-	-	-	535	0.4
Mazda	11,858	882	513	224	1	-	-	-	-	2	13,480	9.4
Mercedes Benz	3,973	46	258	90	116	-	6	-	109	16	4,614	3.2
Mitsubishi	787	166	204	34	27	-	-	-	-	2	1,220	0.8
Nissan	3,453	3,613	1,506	415	29	-	3	-	-	3	9,022	6.3
Opel	244	182	-	1	-	-	-	-	-	-	427	0.3
Peugeot	94	11	-	13	-	-	-	-	-	-	118	0.1
Renault	86	2	-	-	-	-	-	-	-	-	88	0.1
Scania	-	-	149	-	71	-	1	3	431	1	656	0.5
Subaru	361	-	-	-	-	-	-	-	-	-	361	0.3
Tata	7	44	145	6	26	-	1	-	4	-	233	0.2
Toyota	38,738	15,372	4,318	2,927	48	-	-	-	9	13	61,425	42.8
Volkswagen	9,170	232	5	73	14	-	-	-	-	1	9,495	6.6
Volvo	857	-	164	-	12	-	5	1	170	11	1,220	0.8
Yamaha	-	-	-	-	-	163	-	-	-	-	163	0.1
Other	813	391	921	17	12	189	361	4,593	188	396	7,881	5.5
Total	93,980	26,339	9,184	3,872	447	414	1,004	6,835	994	465	143,534	100

Source: Department of Road Transport and Safety, Ministry of Transport and Public Works

## Appendix 2: Rail Transport

**Table 10: Volume Of Goods by Direction (Net tonnes) and Year/Quarter/Month, 2014 - Q2 2024**

Year/ Quarter		Imports			Exports			Local Traffic	Botswana Origin	Botswana Total	Transit Traffic	Total Traffic
		From North	From South	Total Imports	To North	To South	Total Exports					
2014		14,905	723,487	738,393	109,010	588,897	697,907	277,507	975,414	1,713,807	126,006	1,839,813
2015		46,325	796,248	842,574	70,316	667,566	737,882	341,549	1,079,431	1,922,005	85,000	2,007,005
2016		12,924	702,184	715,108	53,544	608,071	661,615	265,379	926,994	1,642,102	415,300	2,057,402
2017		16,431	542,934	559,365	67,330	593,501	660,831	210,223	871,054	1,430,419	112,000	1,542,419
2018		12,239	621,048	633,287	70,879	586,063	656,942	203,890	860,832	1,494,119	55,163	1,549,282
2019		7,927	414,821	422,748	44,439	441,753	486,192	176,874	663,066	1,085,814	46,967	1,132,781
2020		30,317	393,679	423,996	53,064	419,166	472,230	167,359	639,589	1,063,585	141,396	1,204,981
2021		21,067	286,130	307,197	59,139	366,389	425,528	192,183	617,711	924,908	129,210	1,054,118
2022		13,464	254,365	267,829	107,847	305,406	413,253	168,459	581,712	849,541	127,553	977,094
2023		43,509	259,453	302,962	68,252	286,652	354,904	218,197	573,101	876,063	186,527	1,062,590
2022	Jan	-	33,321	33,321	2,555	26,388	28,943	17,205	46,148	79,469	3,555	83,024
	Feb	745	20,954	21,699	5,188	18,894	24,082	14,701	38,783	60,482	9,332	69,814
	Mar	1,047	21,319	22,366	4,530	25,879	30,409	12,999	43,408	65,774	9,985	75,759
	Q1	1,792	75,594	77,386	12,273	71,161	83,434	44,905	128,339	205,725	22,872	228,597
	Apr	2,068	19,181	21,249	3,033	21,638	24,671	9,682	34,353	55,602	12,167	67,769
	May	569	13,979	14,548	3,227	23,644	26,871	13,704	40,575	55,123	16,238	71,361
	Jun	745	20,240	20,985	20,507	26,094	46,601	14,864	61,465	82,450	13,471	95,921
	Q2	3,382	53,400	56,782	26,767	71,376	98,143	38,250	136,393	193,175	41,876	235,051
	July	1,095	28,359	29,454	16,898	29,611	46,509	16,474	62,983	92,437	12,672	105,109
	Aug	2,970	23,959	26,929	14,600	28,979	43,579	15,631	59,210	86,139	12,336	98,475
	Sep	1,268	25,573	26,841	12,399	28,077	40,476	16,476	56,952	83,793	10,010	93,803
	Q3	5,333	77,891	83,224	43,897	86,667	130,564	48,581	179,145	262,369	35,018	297,387
	Oct	1,657	15,222	16,879	12,649	22,630	35,279	15,099	50,378	67,257	4,652	71,909
	Nov	1,300	18,790	20,090	7,878	24,606	32,484	12,677	45,161	65,251	9,716	74,967
	Dec	-	13,468	13,468	4,383	28,966	33,349	8,947	42,296	55,764	13,419	69,183
	Q4	2,957	47,480	50,437	24,910	76,202	101,112	36,723	137,835	188,272	27,787	216,059
2023	Jan	3,694	23,301	26,995	9,771	28,880	38,651	12,155	50,806	77,801	14,288	92,089
	Feb	2,508	12,917	15,425	13,539	18,346	31,885	12,171	44,056	59,481	7,944	67,425
	Mar	4,033	22,883	26,916	8,197	28,704	36,901	13,624	50,525	77,441	18,316	95,757
	Q1	10,235	59,101	69,336	31,507	75,930	107,437	37,950	145,387	214,723	40,548	255,271
	April	4,667	18,187	22,854	4,123	26,869	30,992	19,823	50,815	73,669	18,528	92,197
	May	4,574	22,698	27,272	2,779	33,105	35,884	7,435	43,319	70,591	14,421	85,012
	June	5,032	24,805	29,837	3,612	28,054	31,666	22,291	53,957	83,794	12,534	96,328
	Q2	14,273	65,690	79,963	10,514	88,028	98,542	49,549	148,091	228,054	45,483	273,537
	July	5,752	17,855	23,607	5,704	28,690	34,394	30,469	64,863	88,470	14,169	102,639
	Aug	3,548	26,644	30,192	4,141	16,803	20,944	23,418	44,362	74,554	14,330	88,884
	Sep	2,564	24,096	26,660	6,188	22,367	28,555	22,884	51,439	78,099	12,379	90,478
	Q3	11,864	68,595	80,459	16,033	67,860	83,893	76,771	160,664	241,123	40,878	282,001
	Oct	4,687	25,478	30,165	1,409	25,793	27,202	19,758	46,960	77,125	24,486	101,611
	Nov	1,312	23,699	25,011	3,803	21,719	25,522	17,382	42,904	67,915	17,987	85,902
	Dec	1,138	16,890	18,028	4,986	7,322	12,308	16,787	29,095	47,123	17,145	64,268
	Q4	7,137	66,067	73,204	10,198	54,834	65,032	53,927	118,959	192,163	59,618	251,781
2024	Jan	1,886	17,147	19,033	2,797	25,374	28,171	22,862	51,033	70,066	21,485	91,551
	Feb	306	15,114	15,420	1,819	17,373	19,192	37,088	56,280	71,700	20,708	92,408
	Mar	1,579	18,006	19,585	2,895	23,419	26,314	20,096	46,410	65,995	18,293	84,288
	Q1	3,771	50,267	54,038	7,511	66,166	73,677	80,046	153,723	207,761	60,486	268,247
	April	4,493	22,320	26,813	4,537	22,064	26,601	19,034	45,635	72,448	6,740	79,188
	May	5,390	25,340	30,730	2,138	34,031	36,169	20,561	56,730	87,460	8,969	96,429
	June	5,632	25,525	31,157	2,300	36,841	39,141	18,754	57,895	89,052	10,012	99,064
	Q2	15,515	73,185	88,700	8,975	92,936	101,911	58,349	160,260	248,960	25,721	274,681

Source: Botswana Railways

Table 11: Revenue Generated by Direction and Year/Quarter/Month ('000 Pula), 2014 - Q2 2024

Year/ Quarter		Imports			Exports			Local Traffic	Botswana Origin	Botswana Total	Transit Traffic	Total Traffic
		From North	From South	Total Imports	To North	To South	Total Exports					
2014		1,724	110,850	112,574	18,747	118,164	136,911	45,220	182,131	294,705	23,456	318,161
2015		7,863	127,385	135,248	13,115	132,745	145,860	58,825	204,685	339,933	16,332	356,265
2016		4,843	107,712	112,555	8,312	124,215	132,527	48,534	181,061	293,616	29,403	323,019
2017		2,922	78,420	81,342	12,060	126,918	138,978	44,573	183,551	264,893	23,822	288,715
2018		2,563	97,635	100,198	13,121	132,754	145,875	44,246	190,121	290,319	15,453	305,772
2019		1,827	71,070	72,897	17,718	101,294	119,012	37,629	156,641	229,538	10,366	239,904
2020		6,235	68,590	74,825	10,199	90,994	101,193	35,523	136,716	211,541	31,965	243,506
2021		4,762	37,814	42,576	11,560	81,807	93,367	38,975	132,342	174,918	29,545	204,463
2022		6,492	35,743	42,235	18,952	80,340	99,292	35,237	134,529	176,764	29,700	206,464
2023		9,461	36,149	45,610	17,180	57,984	75,164	45,499	119,847	160,576	40,183	233,944
2022	Jan	-	4,420	4,420	504	6,424	6,928	3,551	10,479	14,899	801	15,700
	Feb	18	2,851	2,869	1,016	4,246	5,262	3,063	8,325	11,194	2,105	13,299
	Mar	26	2,615	2,641	888	5,896	6,784	2,699	9,483	12,124	2,250	14,374
	Q1	44	9,886	9,930	2,408	16,566	18,974	9,313	28,287	38,217	5,156	43,373
	Apr	3,959	2,590	6,549	482	4,683	5,165	2,021	7,186	13,735	2,833	16,568
	May	148	1,825	1,973	634	5,321	5,955	2,863	8,818	10,791	3,784	14,575
	Jun	194	2,837	3,031	3,295	8,209	11,504	3,095	14,599	17,630	3,045	20,675
	Q2	4,301	7,252	11,553	4,411	18,213	22,624	7,979	30,603	42,156	9,662	51,818
	July	274	4,034	4,308	2,897	8,719	11,616	3,025	14,641	18,949	2,845	21,794
	Aug	751	3,954	4,705	2,332	8,997	11,329	3,408	14,737	19,442	2,708	22,150
	Sep	339	3,893	4,232	2,048	8,203	10,251	3,580	13,831	18,063	2,452	20,515
	Q3	1,364	11,881	13,245	7,277	25,919	33,196	10,013	43,209	56,454	8,005	64,459
	Oct	444	2,320	2,764	2,445	6,530	8,975	3,267	12,242	15,006	1,155	16,161
	Nov	339	2,901	3,240	1,554	6,561	8,115	2,732	10,847	14,087	2,398	16,485
	Dec	0	1,503	1,503	857	6,551	7,408	1,933	9,341	10,844	3,324	14,168
	Q4	783	6,724	7,507	4,856	19,642	24,498	7,932	32,430	39,937	6,877	46,814
2023	Jan	1,026	3,525	4,551	1,880	8,012	9,892	2,594	12,486	17,037	3,530	20,567
	Feb	636	2,011	2,647	2,562	5,661	8,223	2,610	10,833	13,480	1,953	15,433
	Mar	1,175	3,171	4,346	1,650	7,154	8,804	2,994	11,798	16,144	4,422	20,566
	Q1	2,837	8,707	11,544	6,092	20,827	26,919	8,198	35,117	46,661	9,905	56,566
	Apr	3,959	2,590	6,549	482	4,683	5,165	2,021	7,186	13,735	2,833	16,568
	May	1,715	2,936	4,651	929	6,565	7,494	4,716	11,281	12,996	4,817	17,813
	Jun	1,415	4,231	5,646	611	7,520	8,131	2,031	9,551	10,966	3,834	14,800
	Q2	1,269	4,881	6,150	816	6,007	6,823	5,499	11,506	12,775	3,221	49,181
	July	1,752	2,988	4,740	1,263	7,833	9,096	7,638	16,734	21,474	3,704	25,178
	Aug	847	4,323	5,170	935	4,545	5,480	5,749	11,229	16,399	3,734	20,133
	Sep	520	3,639	4,159	1,379	5,829	7,208	5,777	12,985	17,144	3,430	20,574
	Q3	3,119	10,950	14,069	3,577	18,207	21,784	19,164	40,948	55,017	10,868	65,885
	Oct	1,306	4,109	5,415	1,409	6,405	7,814	4,684	12,498	17,913	6,677	24,590
	Nov	327	4,002	4,329	3,803	5,221	9,024	4,032	13,056	17,385	4,902	22,287
	Dec	603	3,500	4,103	1,483	1,317	2,800	3,922	6,722	10,825	4,610	15,435
	Q4	2,236	11,611	13,847	6,695	12,943	19,638	12,638	32,276	46,123	16,189	62,312
2024	Jan	559	3,014	3,573	599	6,972	7,571	5,655	13,226	16,799	5,831	22,630
	Feb	90	2,609	2,699	406	4,048	4,454	9,588	14,042	16,741	5,580	22,321
	Mar	462	3,190	3,652	646	5,825	6,471	4,959	11,430	15,082	4,981	20,063
	Q1	1,111	8,813	9,924	1,651	16,845	18,496	20,202	38,698	48,622	16,392	65,014
	April	1,250	3,917	5,167	1,042	6,248	7,290	4,849	12,139	17,306	2,051	19,357
	May	1,340	4,101	5,441	476	8,711	9,187	5,260	14,447	19,888	2,806	22,694
	June	1,510	4,132	5,642	550	9,091	9,641	5,037	14,678	20,320	3,071	23,391
	Q2	4,100	12,150	16,250	2,068	24,050	26,118	15,146	41,264	57,514	7,928	65,442

Source: Botswana Railways

## Appendix 3: Air Transport

**Table 12: Aircraft Movements by Quarter and Type of Movement Q2 2024**

Year/ Quarter		Type of Movement		Total
		International Movements	Domestic Movements	
	Number			
2020	Q1	3,409	9,496	12,905
	Q2	267	1,121	1,388
	Q3	374	2,290	2,664
	Q4	985	3,321	4,306
2021	Q1	1,282	3,181	4,463
	Q2	2,294	6,787	9,081
	Q3	2,778	9,399	12,177
	Q4	2,454	8,695	11,149
2022	Q1	2,197	6,605	8,802
	Q2	3,699	14,203	17,902
	Q3	4,275	16,668	20,943
	Q4	3,302	12,919	16,221
2023	Q1	2,756	9,458	12,214
	Q2	3,848	15,709	19,557
	Q3	4,682	17,224	21,906
	Q4	3,709	12,514	16,223
2024	Q1	3,061	9,448	12,509
	Q2	3,900	16,812	20,712
	Percent of Total			
2020	Q1	26.4	73.6	100
	Q2	19.2	80.8	100
	Q3	14.0	86.0	100
	Q4	22.9	77.1	100
2021	Q1	28.7	71.3	100
	Q2	25.3	74.7	100
	Q3	22.8	77.2	100
	Q4	22.0	78.0	100
2022	Q1	25.0	75.0	100
	Q2	20.7	79.3	100
	Q3	20.4	79.6	100
	Q4	20.4	79.6	100
2023	Q1	22.6	77.4	100
	Q2	19.7	80.3	100
	Q3	21.4	78.6	100
	Q4	22.9	77.1	100
2024	Q1	24.5	75.5	100
	Q2	18.8	81.2	100

**Source:** Civil Aviation Authority Botswana

**Table 12: Aircraft Movements by Quarter and Type of Movement Q2 2024 (continued)**

	Quarter - to - Quarter Percentage Change			
2020	Q1	(24.6)	(42.8)	(38.9)
	Q2	(92.2)	(88.2)	(89.2)
	Q3	40.1	104.3	91.9
	Q4	163.4	45.0	61.6
2021	Q1	30.2	(4.2)	3.6
	Q2	78.9	113.4	103.5
	Q3	21.1	38.5	34.1
	Q4	(11.7)	(7.5)	(8.4)
2022	Q1	(10.5)	(24.0)	(21.1)
	Q2	68.4	115.0	103.4
	Q3	15.6	17.4	17.0
	Q4	(22.8)	(22.5)	(22.5)
2023	Q1	(16.5)	(26.8)	(24.7)
	Q2	39.6	66.1	60.1
	Q3	21.7	9.6	12.0
	Q4	(20.8)	(27.3)	(25.9)
2024	Q1	(17.5)	(24.5)	(22.9)
	Q2	27.4	77.9	65.6

Source: Civil Aviation Authority Botswana

**Table 13a: Aircraft Movements by Type of flight, Q2 2024**

Type of Flight	Type of Movement		
	International	Domestic	Total
	Number		
Scheduled Movements	2,367	900	3,267
Non Scheduled movements	1,405	14,408	15,813
Private Movements	128	306	434
Scenic Flights	-	1,198	1,198
Total	3,900	16,812	20,712
	Percent of Total		
Scheduled Movements	60.7	5.4	15.8
Non Scheduled movements	36.0	85.7	76.3
Private Movements	3.3	1.8	2.1
Scenic Flights	0.0	7.1	5.8
Total	100	100	100
	Percent of Total		
Scheduled Movements	72.5	27.5	100
Non Scheduled movements	8.9	91.1	100
Private Movements	29.5	70.5	100
Scenic Flights	-	100	100
Total	18.8	81.2	100

Source: Civil Aviation Authority Botswana

**Table 13b: Aircraft Movements by Type of flight, Q2 2024**

Type of Flight	Type of Movement		
	International	Domestic	Total
	Number		
Scheduled Arrival	1,184	450	1,634
Scheduled Departure	1,183	450	1,633
Non Scheduled Arrival	707	7,224	7,931
Non Scheduled Departure	698	7,184	7,882
Private Arrival	63	151	214
Private Departure	65	155	220
Scenic Flights	-	1,198	1,198
Total	3,900	16,812	20,712
	Percent of Total		
Scheduled Arrival	30.4	2.7	7.9
Scheduled Departure	30.3	2.7	7.9
Non Scheduled Arrival	18.1	43.0	38.3
Non Scheduled Departure	17.9	42.7	38.1
Private Arrival	1.6	0.9	1.0
Private Departure	1.7	0.9	1.1
Scenic Flights	0.0	7.1	5.8
Total	100	100	100
	Percent of Total		
Scheduled Arrival	72.5	27.5	100
Scheduled Departure	72.4	27.6	100
Non Scheduled Arrival	8.9	91.1	100
Non Scheduled Departure	8.9	91.1	100
Private Arrival	29.4	70.6	100
Private Departure	29.5	70.5	100
Scenic Flights	-	100	100
Total	18.8	81.2	100

Source: Civil Aviation Authority Botswana



**Table 14: Aircraft Movements by Airport and Quarter, Q1 2022 - Q2 2024**

Airport	2022				Total	2023				Total	2024	
	Q1	Q2	Q3	Q4		Q1	Q2	Q3	Q4		Q1	Q2
SSKIA	2,039	2,652	2,669	2,523	9,883	2,427	2,604	2,823	2,609	10,463	2,512	2,709
Maun	5,476	11,961	14,470	10,847	42,754	7,874	13,339	14,880	10,654	46,747	7,983	13,980
Kasane	934	2,836	3,340	2,466	9,576	1,543	3,162	3,776	2,561	11,042	1,628	3,608
Phillip Matante	299	376	404	338	1,417	298	374	385	365	1,422	350	381
Selebi Phikwe	8	18	30	21	77	18	29	14	10	71	10	12
Ghanzi	46	59	30	26	161	54	49	28	24	155	26	22
Total	8,802	17,902	20,943	16,221	63,868	12,214	19,557	21,906	16,223	69,900	12,509	20,712
Percent of Total												
SSKIA	23.2	14.8	12.7	15.6	15.5	19.9	13.3	12.9	16.1	15.0	20.1	13.1
Maun	62.2	66.8	69.1	66.9	66.9	64.5	68.2	67.9	65.7	66.9	63.8	67.5
Kasane	10.6	15.8	15.9	15.2	15.0	12.6	16.2	17.2	15.8	15.8	13.0	17.4
Phillip Matante	3.4	2.1	1.9	2.1	2.2	2.4	1.9	1.8	2.2	2.0	2.8	1.8
Selebi Phikwe	0.1	0.1	0.1	0.1	0.1	0.1	0.1	0.1	0.1	0.1	0.1	0.1
Ghanzi	0.5	0.3	0.1	0.2	0.3	0.4	0.3	0.1	0.1	0.2	0.2	0.1
Total	100	100	100	100	100	100	100	100	100	100	100	100
Percent of Total												
SSKIA	20.6	26.8	27.0	25.5	100	23.2	24.9	27.0	24.9	100		
Maun	12.8	28.0	33.8	25.4	100	16.8	28.5	31.8	22.8	100		
Kasane	9.8	29.6	34.9	25.8	100	14.0	28.6	34.2	23.2	100		
Phillip Matante	21.1	26.5	28.5	23.9	100	21.0	26.3	27.1	25.7	100		
Selebi Phikwe	10.4	23.4	39.0	27.3	100	25.4	40.8	19.7	14.1	100		
Ghanzi	28.6	36.6	18.6	16.1	100	34.8	31.6	18.1	15.5	100		
Total	13.8	28.0	32.8	25.4	100	17.5	28.0	31.3	23.2	100		

Source: Civil Aviation Authority Botswana

**Table 15: Air Passenger Traffic by Quarter and Type of Movement Q1 2020- Q2 2024**

Month/ Quarter		Type of Movement		Total
		International	Domestic	
		Number		
2020	Q1	90,276	62,925	153,201
	Q2	826	1,878	2,704
	Q3	1,541	13,158	14,699
	Q4	11,705	31,372	43,077
2021	Q1	21,039	25,452	46,491
	Q2	33,177	36,479	69,656
	Q3	43,197	46,511	89,708
	Q4	52,367	57,339	109,706
2022	Q1	54,128	43,601	97,729
	Q2	90,031	82,859	172,890
	Q3	112,525	95,406	207,931
	Q4	95,194	78,397	173,591
2023	Q1	78,667	62,008	140,675
	Q2	102,430	92,174	194,604
	Q3	125,292	105,104	230,396
	Q4	113,160	84,974	198,134
2024	Q1	92,885	68,857	161,742
	Q2	123,180	101,305	224,485
		Percent of Total		
2020	Q1	58.9	41.1	100
	Q2	30.5	69.5	100
	Q3	10.5	89.5	100
	Q4	27.2	72.8	100
2021	Q1	45.3	54.7	100
	Q2	47.6	52.4	100
	Q3	48.2	51.8	100
	Q4	47.7	52.3	100
2022	Q1	55.4	44.6	100
	Q2	52.1	47.9	100
	Q3	54.1	45.9	100
	Q4	54.8	45.2	100
2023	Q1	55.9	44.1	100
	Q2	52.6	47.4	100
	Q3	54.4	45.6	100
	Q4	57.1	42.9	100
2024	Q1	57.4	42.6	100
	Q2	54.9	45.1	100

Source: Civil Aviation Authority Botswana

**Table 15: Air Passenger Traffic by Quarter and Type of Movement Q1 2020- Q2 2024 (continued)**

	Quarter-to-Quarter Percentage Change			
2020	Q1	(31.5)	(34.8)	(32.9)
	Q2	(99.1)	(97.0)	(98.2)
	Q3	86.6	600.6	443.6
	Q4	659.6	138.4	193.1
2021	Q1	79.7	(18.9)	7.9
	Q2	57.7	43.3	49.8
	Q3	30.2	27.5	28.8
	Q4	21.2	23.3	22.3
2022	Q1	3.4	(24.0)	(10.9)
	Q2	66.3	90.0	76.9
	Q3	25.0	15.1	20.3
	Q4	(15.4)	(17.8)	(16.5)
2023	Q1	(17.4)	(20.9)	(19.0)
	Q2	30.2	48.6	38.3
	Q3	22.3	14.0	18.4
	Q4	(9.7)	(19.2)	(14.0)
2024	Q1	(17.9)	(19.0)	(18.4)
	Q2	32.6	47.1	38.8

**Source:** Civil Aviation Authority Botswana

**Table 16: Air Passenger Movements By type of Flight,  
Q1 2020 - Q2 2024**

Year/ Quarter		Type of Flight				Total
		Scheduled	Non-Scheduled	Private	Scenic	
		Number				
2020	Q1	123,588	25,986	1,875	1,752	153,201
	Q2	-	2,406	243	55	2,704
	Q3	7,906	6,087	287	419	14,699
	Q4	34,706	7,266	397	708	43,077
2021	Q1	39,848	6,020	344	279	46,491
	Q2	53,230	15,119	646	661	69,656
	Q3	62,179	25,438	489	1,602	89,708
	Q4	84,453	22,938	775	1,540	109,706
2022	Q1	77,969	18,128	780	852	97,729
	Q2	123,593	45,802	890	2,605	172,890
	Q3	147,273	54,204	1,462	4,992	207,931
	Q4	128,978	40,276	1,434	2,903	173,591
2023	Q1	108,972	28,616	1,626	1,461	140,675
	Q2	135,406	54,629	1,348	3,221	194,604
	Q3	160,399	62,787	1,468	5,742	230,396
	Q4	149,941	43,061	1,775	3,357	198,134
2024	Q1	128,142	30,560	1,495	1,545	161,742
	Q2	162,319	56,105	2,114	3,947	224,485
		Percent of Total				
2020	Q1	80.7	17.0	1.2	1.1	100
	Q2	0.0	89.0	9.0	2.0	100
	Q3	53.8	41.4	2.0	2.9	100
	Q4	80.6	16.9	0.9	1.6	100
2021	Q1	85.7	12.9	0.7	0.6	100
	Q2	76.4	21.7	0.9	0.9	100
	Q3	69.3	28.4	0.5	1.8	100
	Q4	77.0	20.9	0.7	1.4	100
2022	Q1	79.8	18.5	0.8	0.9	100
	Q2	71.5	26.5	0.5	1.5	100
	Q3	70.8	26.1	0.7	2.4	100
	Q4	74.3	23.2	0.8	1.7	100
2023	Q1	77.5	20.3	1.2	1.0	100
	Q2	69.6	28.1	0.7	1.7	100
	Q3	69.6	27.3	0.6	2.5	100
	Q4	75.7	21.7	0.9	1.7	100
2024	Q1	79.2	18.9	0.9	1.0	100
	Q2	72.3	25.0	0.9	1.8	100

Source: Civil Aviation Authority Botswana

**Table 16: Air Passenger Movements By type of Flight,  
Q1 2020 - Q2 2024 (continued)**

		Quarter-to-Quarter Percentage Change				
2020	Q1	(28.6)	(45.1)	(29.4)	(65.8)	(32.9)
	Q2	(100.0)	(90.7)	(87.0)	(96.9)	(98.2)
	Q3	0.0	153.0	18.1	661.8	443.6
	Q4	339.0	19.4	38.3	69.0	193.1
2021	Q1	14.8	(17.1)	(13.4)	(60.6)	7.9
	Q2	33.6	151.1	87.8	136.9	49.8
	Q3	16.8	68.3	(24.3)	142.4	28.8
	Q4	35.8	(9.8)	58.5	(3.9)	22.3
2022	Q1	(7.7)	(21.0)	0.6	(44.7)	(10.9)
	Q2	58.5	152.7	14.1	205.8	76.9
	Q3	19.2	18.3	64.3	91.6	20.3
	Q4	(12.4)	(25.7)	(1.9)	(41.8)	(16.5)
2023	Q1	(15.5)	(29.0)	13.4	(49.7)	(19.0)
	Q2	24.3	90.9	(17.1)	120.5	38.3
	Q3	18.5	14.9	8.9	78.3	18.4
	Q4	(6.5)	(31.4)	20.9	(41.5)	(14.0)
2024	Q1	(14.5)	(29.0)	(15.8)	(54.0)	(18.4)
	Q2	26.7	83.6	41.4	155.5	38.8

**Source:** Civil Aviation Authority Botswana



**Table 17: Air Passenger Movement by Airport and Type of Flight, Q2 2024**

Airport	Type of Flight						Quarter-to-Quarter Change
	Scheduled	Non Scheduled	Private	Scenic	Total	Q1 2024	
SSKIA	98,731	1,247	1,764	-	101,742	87,678	16.0
Maun	42,270	37,902	53	3,751	83,976	50,536	66.2
Kasane	14,803	16,688	17	196	31,704	16,858	88.1
Phillip Matante	6,515	266	173	-	6,954	6,542	6.3
Selebi Phikwe	-	-	35	-	35	52	(32.7)
Ghanzi	-	2	72	-	74	76	(2.6)
<b>Total</b>	<b>162,319</b>	<b>56,105</b>	<b>2,114</b>	<b>3,947</b>	<b>224,485</b>	<b>161,742</b>	<b>38.8</b>
Percent of Total							
SSKIA	60.8	2.2	83.4	-	45.3	54.2	
Maun	26.0	67.6	2.5	95	37.4	31.2	
Kasane	9.1	29.7	0.8	5	14.1	10.4	
Phillip Matante	4.0	0.5	8.2	-	3.1	4.0	
Selebi Phikwe	0.0	0.0	1.7	-	0.0	0.0	
Ghanzi	0.0	0.0	3.4	-	0.0	0.0	
<b>Total</b>	<b>100</b>	<b>100</b>	<b>100</b>	<b>100</b>	<b>100</b>	<b>100</b>	
Percent of Total							
SSKIA	97.0	1.2	1.7	-	100		
Maun	50.3	45.1	0.1	4.5	100		
Kasane	46.7	52.6	0.1	0.6	100		
Phillip Matante	93.7	3.8	2.5	0.0	100		
Selebi Phikwe	-	-	100	-	100		
Ghanzi	-	2.7	97.3	-	100		
<b>Total</b>	<b>72.3</b>	<b>25.0</b>	<b>0.9</b>	<b>1.8</b>	<b>100</b>		

**Source:** Civil Aviation Authority of Botswana

## Explanatory Notes

### 1. Motor Vehicle Registrations

Motor vehicle registration deals with licensing of motor vehicles with respect to those registered for the first time and license renewal of pre-existing ones. First registrations are done at the Department of Road Transport and Safety (DRTS) only, while license renewals are done at DRTS offices, Post Offices country wide and some stores like Sefalana Cash and Carry. First Registration could be new, used or rebuilt.

### 2. Rail Transport

Rail Transport covers passengers and goods transported by rail and the revenue generated from the conveyance of these goods and passengers. Botswana Origin is comprised of Total Exports and Local Traffic goods while Botswana Total is an addition of Total Imports and Botswana Origin goods. Total Traffic is made up of Total Exports, Total Imports, Local Traffic and Transit Traffic. Local traffic is goods transported within Botswana and Transit Traffic is goods transported through Botswana to other countries.

### 3. Air Transport

Air transport section covers the movement of aircrafts and air passengers both locally and internationally.

International movements refer to movements made by aircrafts and passengers to destinations outside Botswana whilst domestic movements account for travels made within Botswana. The movements are further categorized into scheduled, non-scheduled and private.

Scheduled aircraft movements refer to commercial airlines operating on a time table while non-scheduled aircraft movements refer to commercial aircrafts which operate as and when needed. Private aircraft movements refer to non-commercial individual aircrafts. Scenic aircraft movements refer to airlines that focus on wildlife and surrounding natures.

**N.B** Francistown International airport has been renamed Phillip Matante International airport

Private Bag 0024, Gaborone  
**Tel:** 3671300 **Fax:** 3952201  
**Toll Free:** 0800 600 200

Private Bag F193,  
Francistown  
**Tel:** 241 5848 **Fax:** 241 7540

Private Bag 47  
Maun  
**Tel:** 371 5716 **Fax:** 686 4327

**E-mail:** [info@statsbots.org.bw](mailto:info@statsbots.org.bw) **Website:** <http://www.statsbots.org.bw>



**STATISTICS BOTSWANA**