

TRANSPORT & INFRASTRUCTURE STATISTICS Q1 2014

2014/01

STATS BRIEF

STATISTICS BOTSWANA

Copyrights © Statistics Botswana 2014

1. INTRODUCTION

This Stats Brief presents the most available Transport and Infrastructure Statistics for Quarter 1 of 2014. More detailed statistics will be included in the 2014 Transport and Infrastructure Statistics main report which will be released in September 2015. This brief contains the latest Transport and Infrastructure statistics relating to:

- Air Transport
- Motor Vehicle Registrations
- Railway Transport
- Water Transport

Air Transport statistics give an overview of aircraft and passenger movements while Motor Vehicle Registration statistics look at motor vehicle first registrations and license renewals. Railway Transport section presents statistics on quantity of goods carried by rail and revenue generated from the conveyance of those goods. Water transport statistics show movement of passengers who use the Pontoon to cross the Zambezi River to and from Zambia, Democratic Republic of Congo and Angola. The data reported on this quarterly brief is based on calendar year.



A.N. Majelantle
Statistician General
August 2014

2. EXECUTIVE SUMMARY

2.1 Air Transport

Air Transport looks at both domestic and international movements made by aircrafts and passengers. International movements herein refers to movements made by aircrafts and passengers to destinations outside Botswana borders, whilst domestic movements accounts for travels made within Botswana borders. These movements are further classified into scheduled, non-scheduled and private where scheduled movements are those movements that follow a time table and are usually commercial, while non-scheduled refer to movements which do not follow a time table but operate as and when needed, yet also commercial. Private Aircrafts movements refer to non-commercial movements, the aircrafts are usually individually owned.

2.1.1 Aircraft Movements

In Q1 2014, 74.7 percent of aircraft movements were domestic movements. Both international and domestic traffic recorded a decrease in aircraft movements in this quarter; international movements declined by 7.6 percent while domestic movements declined by 28.1 percent when compared to the previous quarter, Q4 2013. There was a total decline of 23.8 percent in aircraft movements in Q1 2014, when compared to the previous quarter. Similarly, Q1 2014 realized a total decline of 6.5 percent when compared to Q1 of the previous year, 2013. The same cannot be said for international movements, when annualizing these quarters, for they remained constant at 4, 193 movements in both quarters.

Data from the past three years (2011 – 2013) show that an increase in aircraft movements is recorded until the third quarter of the preceding year, while the decline/least are recorded in the first quarter of the subsequent year. This means that aircraft movements increase from Q1 to Q3 but decrease in and Q4. Aircraft movements decrease in Q4 as compared to other quarters because people do not travel that much during December rather they stay at home with their families. This is shown in Table 1 and Figure 1.

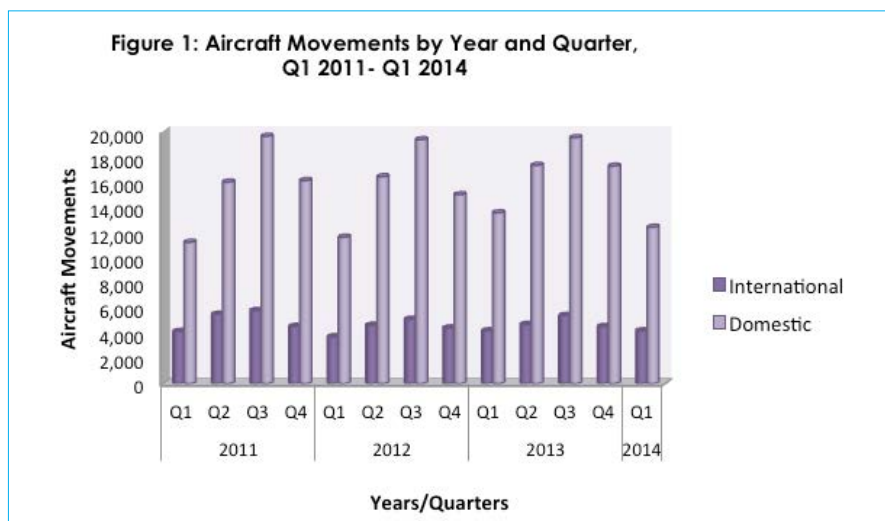


Table 1: Aircraft Movements by Quarter and Type of Movement, Q1 2011 - Q1 2014

Year/Quarter		International	Domestic	Total
<i>Number</i>				
2011	Q1	4,136	11,194	15,330
	Q2	5,494	15,966	21,460
	Q3	5,796	19,592	25,388
	Q4	4,538	16,083	20,621
2012	Q1	3,718	11,600	15,318
	Q2	4,638	16,391	21,029
	Q3	5,108	19,318	24,426
	Q4	4,421	14,970	19,391
2013	Q1	4,193	13,533	17,726
	Q2	4,696	17,291	21,987
	Q3	5,399	19,482	24,881
	Q4	4,536	17,233	21,769
2014	Q1	4,193	12,387	16,580
<i>Percent of Total</i>				
2011	Q1	27.0	73.0	100
	Q2	25.6	74.4	100
	Q3	22.8	77.2	100
	Q4	22.0	78.0	100
2012	Q1	24.3	75.7	100
	Q2	22.1	77.9	100
	Q3	20.9	79.1	100
	Q4	22.8	77.2	100
2013	Q1	23.7	76.3	100
	Q2	21.4	78.6	100
	Q4	20.8	79.2	100
2014	Q1	25.3	74.7	100
<i>Quarter - to - Quarter Change</i>				
2011	Q2	32.8	42.6	40.0
	Q3	5.5	22.7	18.3
	Q4	(21.7)	(17.9)	(18.8)
2012	Q1	(18.1)	(27.9)	(25.7)
	Q2	24.7	41.3	37.3
	Q3	10.1	17.9	16.2
	Q4	(13.4)	(22.5)	(20.6)
2013	Q1	(5.2)	(9.6)	(8.6)
	Q2	12.0	27.8	24.0
	Q3	15.0	12.7	13.2
	Q4	(16.0)	(11.5)	(12.5)
2014	Q1	(7.6)	(28.1)	(23.8)

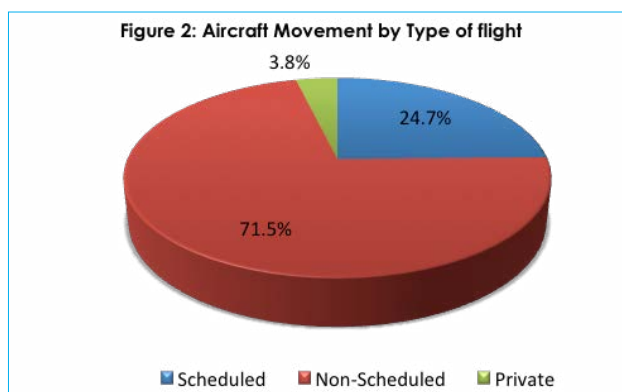
Source: Civil Aviation Authority Botswana

Scheduled aircraft movements for Q1 2014 were 4,093, which is 24.7 percent of the total aircraft movements. Non-scheduled contributed 11, 862 movements, which is 71.5 percent of the total aircraft movements. In Q1, 2014 scheduled movements increased by 1.8 percent compared to the previous quarter, while for non - scheduled aircraft movements decreased by 30.6 percent, in the same period. Even though Q4 is a season of travelling, commercial aircrafts movements tend to decrease because they are most often used for business travel and businesses usually close around that time. Private aircraft movements declined in Q1 2014 by 5.3 percent compared to Q4 2013. When compared to the same quarter of the previous year, all the Flight types in Q1 2014 recorded a fall in aircraft movements, scheduled movements with 4.5 percent, non - scheduled with 6.6 percent and private movements declined by 15.4 percent. See **Table 2**, and **Figure 2**.

Table 2: Aircraft Movements by Quarter and Type of Flight, Q1 2013- Q1 2014

	Flight Type			Total
	Scheduled	Non-Scheduled	Private	
	<i>Number</i>			
2013 Q1	4,286	12,701	739	17,726
Q2	4,191	16,793	1,003	21,987
Q3	4,339	19,804	738	24,881
Q4	4,019	17,090	660	21,769
2014 Q1	4,093	11,862	625	16,580
	<i>Percent of Total</i>			
2013 Q1	24.2	71.7	4.2	100
Q2	19.1	76.4	4.6	100
Q3	17.4	79.6	3.0	100
Q4	18.5	78.5	3.0	100
2014 Q1	24.7	71.5	3.8	100

Source: Civil Aviation Authority of Botswana



Maun airport recorded 58.0 percent (9,606) of the total aircraft movements for Q1 2014 and 93.3 percent (8,963) of these movements were domestic movements. Gaborone airport recorded a total of 3,879 aircraft movements constituting 23.4 percent of the total aircraft movements for Q1 2014. Gantsi airport was the least contributor at 0.3 percent (45) of the total aircraft movements. For Q1 2014, 84.4 percent of these movements were domestic movements whilst 15.6 were international movements.

Compared to the previous quarter, all the airports in Q1 2014 recorded a decline in aircraft movements. Even though that is the case, Gaborone, Selebi-Phikwe and Gantsi recorded an increase in one of the types of aircraft movements; Gaborone airport had international movements increase by 2.1 percent, Selebi-Phikwe had its domestic movements increase by 9.8 percent and Gantsi which does not usually record international movements recorded 7 international aircraft movements.

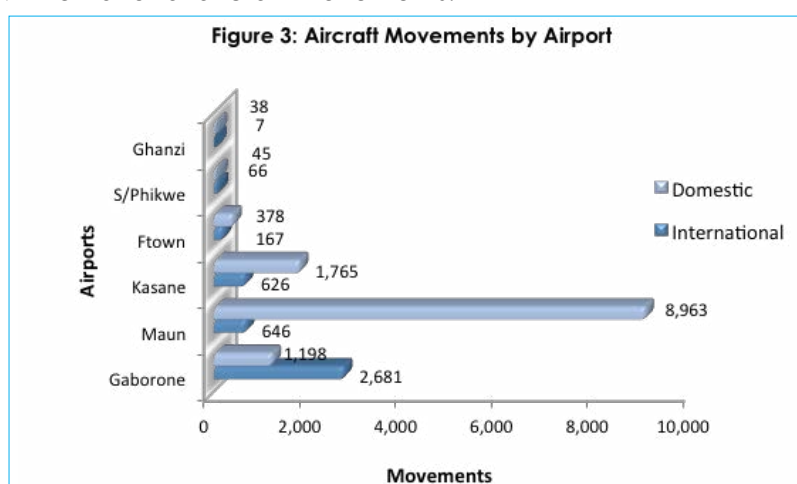


Table 3: Aircraft Movements by Airport and Type of Movement, Q1 2013 - Q1 2014

			Airport						
			Gaborone	Maun	Kasane	Ftwn	S/Phikwe	Ghanzi	Total
			Number						
2013	Q1	International	2,646	688	542	185	132	-	4,193
		Domestic	1,482	9,831	1,653	434	69	64	13,533
		Total	4,128	10,519	2,195	619	201	64	17,726
	Q2	International	2,702	793	876	254	71	-	4,696
		Domestic	1,509	12,411	2,726	507	62	76	17,291
		Total	4,211	13,204	3,602	761	133	76	21,987
	Q3	International	2,578	1,363	1,111	249	98	-	5,399
		Domestic	1,483	13,941	3,472	474	34	78	19,482
		Total	4,061	15,304	4,583	723	132	78	24,881
	Q4	International	2,626	854	771	207	78	-	4,536
		Domestic	1,320	13,024	2,370	424	41	54	17,233
		Total	3,946	13,878	3,141	631	119	54	21,769
2014	Q1	International	2,681	646	626	167	66	7	4,193
		Domestic	1,198	8,963	1,765	378	45	38	12,387
		Total	3,879	9,609	2,381	545	111	45	16,580
			Percent of Total						
2013	Q1	International	63.1	16.4	12.9	4.4	3.1	-	100
		Domestic	11.0	72.6	12.2	3.2	0.5	0.5	100
		Total	23.3	59.3	12.4	3.5	1.1	0.4	100
	Q2	International	57.5	16.9	18.7	5.4	1.5	-	100
		Domestic	8.7	71.8	15.8	2.9	0.4	0.4	100
		Total	19.2	60.1	16.4	3.5	0.6	0.3	100
	Q3	International	47.7	25.2	20.6	4.6	1.8	-	100
		Domestic	7.6	71.6	17.8	2.4	0.2	0.4	100
		Total	16.3	61.5	18.4	2.9	0.5	0.3	100
	Q4	International	57.9	18.8	17.0	4.6	1.7	-	100
		Domestic	7.7	75.6	13.8	2.5	0.2	0.3	100
		Total	18.1	63.8	14.4	2.9	0.5	0.2	100
2014	Q1	International	63.9	15.4	14.9	4.0	1.6	0.2	100
		Domestic	9.7	72.4	14.2	3.1	0.4	0.3	100
		Total	23.4	58.0	14.4	3.3	0.7	0.3	100

Source: Civil Aviation Authority of Botswana

Table 4: Aircraft Movements by Airport, Q1 2013 - Q 1 2014

	Gaborone	Maun	Kasane	Francistown	S/Phikwe	Ghanzi	Total
<i>Number</i>							
2013 Q1	4,128	10,519	2,195	619	201	64	17,726
Q2	4,211	13,204	3,602	761	133	76	21,987
Q3	4,061	15,304	4,583	723	132	78	24,881
Q4	3,946	13,878	3,141	631	119	54	21,769
2014 Q1	3,879	9,609	2,391	545	111	45	16,580
<i>Percent of Total</i>							
2013 Q1	23.3	59.3	12.4	3.5	1.1	0.4	100
Q2	19.2	60.1	16.4	3.5	0.6	0.3	100
Q3	16.3	61.5	18.4	2.9	0.5	0.3	100
Q4	18.1	63.8	14.4	2.9	0.5	0.2	100
2014 Q1	23.4	58.0	14.4	3.3	0.7	0.3	100
<i>Quarter - to - Quarter Change</i>							
2013 Q1	0.6	(9.5)	(20.7)	(12.3)	59.5	3.2	(8.6)
Q2	2.0	25.5	64.1	22.9	(33.8)	18.8	24.0
Q3	(3.6)	15.9	27.2	(5.0)	(0.8)	2.6	13.2
Q4	(2.8)	(9.3)	(31.5)	(12.7)	(9.8)	(30.8)	(12.5)
2014 Q1	(1.7)	(30.8)	(23.9)	(13.6)	(6.7)	(16.7)	(23.8)

Source: Civil Aviation Authority of Botswana

2.1.2 Air Passenger Movements

It is only natural that a drop in aircraft movements will also influence a drop in air passenger movements as it was the case in Q1 2014. Total air passenger movements declined by 18.0 percent; international movements declined by 14.8 percent while domestic movements decreased by 21.4 percent compared to the previous quarter, Q4 2013.

As compared to the same quarter in the previous year, total passenger movements for Q1 2014 decreased by 0.8 percent. In the same period, international movements increased by 1.7 percent while domestic passenger movements fell by 1.7 percent. See **Table 5**.

Table 5: Air Passenger Traffic by Quarter and Flight Type, Q1 2011 - Q1 2014

	International	Domestic	Total
<i>Number</i>			
2011 Q1	90,447	74,083	164,530
Q2	106,507	94,509	201,016
Q3	113,459	108,299	221,758
Q4	103,147	98,010	201,157
2012 Q1	87,167	77,018	164,185
Q2	98,857	94,364	193,221
Q3	109,466	104,075	213,541
Q4	104,158	89,872	194,030
2013 Q1	88,220	77,117	165,337
Q2	100,534	91,329	191,863
Q3	112,325	114,206	226,531
Q4	105,359	94,561	199,920
2014 Q1	89,718	74,306	164,024
<i>Percent of Total</i>			
2011 Q1	55.0	45.0	100
Q2	53.0	47.0	100
Q3	51.2	48.8	100
Q4	51.3	48.7	100
2012 Q1	53.1	46.9	100
Q2	51.2	48.8	100
Q3	51.3	48.7	100
Q4	53.7	46.3	100
2013 Q1	53.4	46.6	100
Q2	52.4	47.6	100
Q3	49.6	50.4	100
Q4	52.7	47.3	100
2014 Q1	54.7	45.3	100
<i>Quarter - to - Quarter Change</i>			
2011 Q2	17.8	27.6	22.2
Q3	6.5	14.6	10.3
Q4	(9.1)	(9.5)	(9.3)
2012 Q1	(15.5)	(21.4)	(18.4)
Q2	13.4	22.5	17.7
Q3	10.7	10.3	10.5
Q4	(4.8)	(13.6)	(9.1)
2013 Q1	(15.3)	(14.2)	(14.8)
Q2	14.0	18.4	16.0
Q3	11.7	25.0	18.1
Q4	(6.2)	(17.2)	(11.7)
2014 Q1	(14.8)	(21.4)	(18.0)

Source: Civil Aviation Authority of Botswana

All the flight types experienced a decrease in passenger movements, scheduled movements decreased by 12.9 percent compared to the previous quarter Q4 2013 while non – scheduled and private movements fell by 34.6 percent and 0.5 percent respectively. See **Table 6**

Table 6: Air Passenger Traffic by Quarter and Type of Flight, Q1 - Q4 2013

	Flight Type			Total
	Scheduled	Non-Scheduled	Private	
	<i>Number</i>			
2013 Q1	131,374	32,979	984	165,337
Q2	144,930	45,143	1,517	191,590
Q3	159,482	65,113	1,936	226,531
Q4	149,989	47811	2120	199,920
2014 Q1	130,626	31288	2110	164,024
	<i>Percent of Total</i>			
2013 Q1	79.5	19.9	0.6	100
Q2	75.6	23.6	0.8	100
Q3	70.4	28.7	0.9	100
Q4	75.0	23.9	1.1	100
2014 Q1	79.6	19.1	1.3	100
	<i>Quarter -to - Quarter Change</i>			
2013 Q1	(11.0)	(25.9)	(48.3)	(14.8)
Q2	10.3	36.9	54.2	15.9
Q3	10.0	44.2	27.6	18.2
Q4	(6.0)	(26.6)	9.5	(11.7)
2014 Q1	(12.9)	(34.6)	(0.5)	(18.0)

Source: Civil Aviation Authority of Botswana

Quarter to quarter change of passenger movements is shown in figure 4. These changes are not consistent for all the types of movements; one quarter records a decrease and the next an increase or vice versa. This is also shown in Table 6.

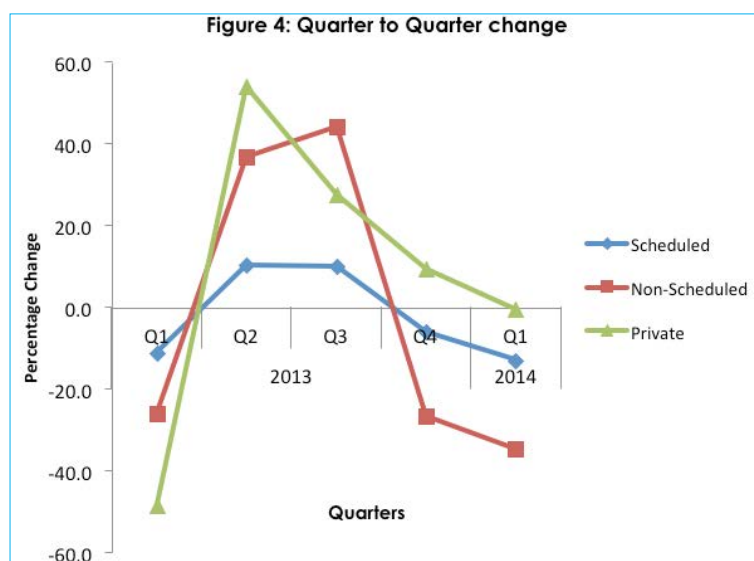


Table 7: Air Passenger Traffic by Flight Type and Airport, Q1 2013- Q1 2014

			Airport						
			Gaborone	Maun	Kasane	Francistown	S/Phikwe	Ghanzi	Total
			<i>Number</i>						
2013	Q1	International	71,430	11,760	2,966	1,906	158	-	88,220
		Domestic	24,071	33,680	10,414	8,749	97	106	77,117
		Total	95,501	45,440	13,380	10,655	255	106	165,337
	Q2	International	73,771	19,393	5,078	2,034	258	-	100,534
		Domestic	26,098	39,836	15,796	9,210	208	181	91,329
		Total	99,869	59,229	20,874	11,244	466	181	191,863
	Q3	International	73,968	24,198	11,791	2,057	311	-	112,325
		Domestic	28,109	48,406	27,735	9,591	137	228	114,206
		Total	102,077	72,604	39,526	11,648	448	228	226,531
	Q4	International	77,369	17,996	7,485	2,166	343	-	105,359
		Domestic	26,284	43,070	15,891	9,003	189	124	94,561
		Total	103,653	61,066	23,376	11,169	532	124	199,920
2014	Q1	International	69,276	12,651	5,779	1,724	263	25	89,718
		Domestic	23,244	31,142	11,271	8,393	163	93	74,306
		Total	92,520	43,793	17,050	10,117	426	118	164,024
			<i>Percent of Total</i>						
2013	Q1	International	81.0	13.3	3.4	2.2	0.2	-	100
		Domestic	31.2	43.7	13.5	11.3	0.1	0.1	100
		Total	57.8	27.5	8.1	6.4	0.2	0.1	100
	Q2	International	73.4	19.3	5.1	2.0	0.3	-	100
		Domestic	28.6	43.6	17.3	10.1	0.2	0.2	100
		Total	52.1	30.9	10.9	5.9	0.2	0.1	100
	Q3	International	65.9	21.5	10.5	1.8	0.3	-	100
		Domestic	24.6	42.4	24.3	8.4	0.1	0.2	100
		Total	45.1	32.1	17.4	5.1	0.2	0.1	100
	Q4	International	73.4	17.1	7.1	2.1	0.3	-	100
		Domestic	27.8	45.5	16.8	9.5	0.2	0.1	100
		Total	51.8	30.5	11.7	5.6	0.3	0.1	100
2014	Q1	International	77.2	14.1	6.4	1.9	0.3	-	100
		Domestic	31.3	41.9	15.2	11.3	0.2	0.1	100
		Total	56.4	26.7	10.4	6.2	0.3	0.1	100

Source: Civil Aviation Authority of Botswana

The highest number of passenger movements was recorded in Gaborone airport with 56.4 percent (92,520) of total passenger movements, while Gantsi recorded the lowest with just 0.1 percent (118) of the total passenger movements. All airports recorded a decrease in passenger movements when compared to the previous quarter. Gaborone and Selebi-Phikwe and Kasane airports recorded decreases of 10.7, 28.3 and 27.1 percent respectively. This is shown in **Tables 7** and **8**

Table 8: Air Passenger Traffic by Airport, Q1 2013 - Q 1 2014

		Airport						
		Gaborone	Maun	Kasane	Francistown	S/Phikwe	Ghanzi	Total
		Number						
2013	Q1	95,501	45,440	13,380	10,655	255	106	165,337
	Q2	99,869	59,229	20,874	11,244	466	181	191,863
	Q3	102,077	72,604	39,526	11,648	448	228	226,531
	Q4	103,653	61,066	23,376	11,169	532	124	199,920
2014	Q1	92,520	43,793	17,050	10,117	426	118	164,024
		Percent of Total						
2013	Q1	57.8	27.5	8.1	6.4	0.2	0.1	100
	Q2	52.1	30.9	10.9	5.9	0.2	0.1	100
	Q3	45.1	32.1	17.4	5.1	0.2	0.1	100
	Q4	51.8	30.5	11.7	5.6	0.3	0.1	100
2014	Q1	56.4	26.7	10.4	6.2	0.3	0.1	100
		Quarter - to - Quarter Percentage Change						
2013	Q1	(10.0)	(23.3)	(21.0)	(5.2)	(28.4)	6.0	(14.8)
	Q2	4.6	30.3	56.0	5.5	82.7	70.8	16.0
	Q3	2.2	22.6	89.4	3.6	(3.9)	26.0	18.1
	Q4	1.5	(15.9)	(40.9)	(4.1)	18.8	(45.6)	(11.7)
2014	Q1	(10.7)	(28.3)	(27.1)	(9.4)	(19.9)	(4.8)	(18.0)

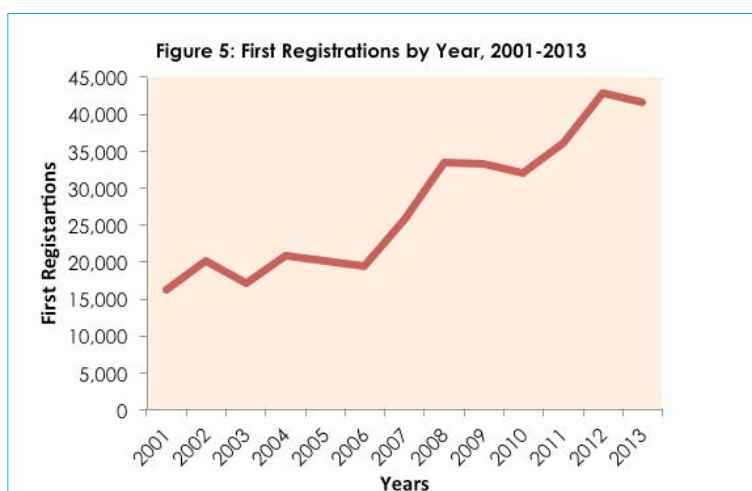
Source: Civil Aviation Authority of Botswana

2.2. Motor Vehicle Registration

This section is about First/ New Registration and Renewal of motor vehicle licenses. For first registrations, the vehicles are being registered for the first time but not necessarily meaning that they are brand new, these vehicles could have been pre-owned. First registration is a once off operation and is then followed by renewals which are done annually with a fee, until the vehicle is no longer in use.

2.2.1. Motor Vehicle First Registrations

The acquisition of vehicles has grown over the years. From 2001 to date, a total of 367,250 first registrations have been recorded. These registrations have increased in a fluctuating manner. See Figure 5 below



Throughout the years, passenger vehicles have dominated in all the registrations followed by vans. To date (from 2001 – 2014 Q1), a total of 233,137 passenger cars have been registered, which is 63.5 percent of all the vehicles that have been registered so far. Vans follow at 16.4 percent and motor cycles have the lowest registrations with 2,328, which is just 0.63 percent of all the first registrations. Even on quarterly bases, the registrations follow the same trend; it is passenger cars first followed by vans.

It is evident that quarter 1 almost always records the lowest of first registrations compared to the other quarters. Q4 tends to record the highest of the registrations.

The 8,662 total first registrations was a decline compared to the same quarter of the previous year's 9,941. This was a decrease of 12.9 percent. See **Tables 9 & 10**

Table 9: Motor Vehicle First Registrations by Type of Vehicle, 2001 - Q1 2014

Year/Quarter	Passenger Cars	Vans	Trucks	Buses	Motor Cycles	Tractors	Trailers	Tankers/Horses	Others	Total	
2001	7,465	5,492	963	788	137	180	841	37	252	16,155	
2002	9,313	7,006	1,136	745	153	218	1,114	80	277	20,042	
2003	8,272	5,031	1,170	804	97	170	1,061	162	324	17,091	
2004	11,608	4,908	1,146	1,433	109	163	1,023	135	212	20,737	
2005	12,905	3,110	1,219	1,298	110	141	960	167	179	20,089	
2006	13,073	2,462	1,395	709	104	138	1,123	275	163	19,442	
2007	16,538	3,935	2,121	784	164	226	1,457	326	325	25,876	
2008	20,037	5,912	3,031	1,031	255	430	1,792	392	533	33,413	
2009	19,354	5,831	2,970	1,136	241	801	2,029	396	567	33,325	
2010	20,972	4,040	2,581	1,084	249	671	1,825	259	248	31,929	
2011	25,204	3,426	2,723	1,058	241	825	1,894	434	239	36,044	
2012	Q1	6,272	974	574	262	71	164	424	94	53	8,888
	Q2	7,578	1,060	689	319	48	136	497	117	62	10,506
	Q3	8,619	1,066	654	357	43	183	403	84	45	11,454
	Q4	9,002	1,060	582	375	57	288	475	97	42	11,978
2013	Q1	7,479	977	533	327	55	126	326	68	50	9,941
	Q2	7,535	870	635	395	62	128	389	65	49	10,128
	Q3	7,889	865	531	347	30	207	402	80	44	10,395
	Q4	8,219	949	555	350	39	312	651	51	29	11,155
2014	Q1	5,803	1,352	486	344	63	137	329	56	92	8,662

Source: Department of Road Transport and Safety, Ministry of Transport and Communication

Table 10: The Proportion of Motor Vehicle First Registrations by Type of Vehicle, 2001 - Q1 2014

Year/Quarter	Passenger Cars	Vans	Trucks	Buses	Motor Cycles	Tractors	Trailers	Tankers/Horses	Others	Total
2001	46.2	34.0	6.0	4.9	0.8	1.1	5.2	0.2	1.6	100
2002	46.5	35.0	5.7	3.7	0.8	1.1	5.6	0.4	1.4	100
2003	48.4	29.4	6.8	4.7	0.6	1.0	6.2	0.9	1.9	100
2004	56.0	23.7	5.5	6.9	0.5	0.8	4.9	0.7	1.0	100
2005	64.2	15.5	6.1	6.5	0.5	0.7	4.8	0.8	0.9	100
2006	67.2	12.7	7.2	3.6	0.5	0.7	5.8	1.4	0.8	100
2007	63.9	15.2	8.2	3.0	0.6	0.9	5.6	1.3	1.3	100
2008	60.0	17.7	9.1	3.1	0.8	1.3	5.4	1.2	1.6	100
2009	58.1	17.5	8.9	3.4	0.7	2.4	6.1	1.2	1.7	100
2010	65.7	12.7	8.1	3.4	0.8	2.1	5.7	0.8	0.8	100
2011	0.0	0.0	0.0	0.0	0.0	0.0	0.0	0.0	0.0	0
2012 Q1	70.6	11.0	6.5	2.9	0.8	1.8	4.8	1.1	0.6	100
Q2	72.1	10.1	6.6	3.0	0.5	1.3	4.7	1.1	0.6	100
Q3	75.2	9.3	5.7	3.1	0.4	1.6	3.5	0.7	0.4	100
Q4	75.2	8.8	4.9	3.1	0.5	2.4	4.0	0.8	0.4	100
2013 Q1	75.2	9.8	5.4	3.3	0.6	1.3	3.3	0.7	0.5	100
Q2	74.4	8.6	6.3	3.9	0.6	1.3	3.8	0.6	0.5	100
Q3	0.0	8.3	5.1	3.3	0.3	2.0	3.9	0.8	0.4	100
Q4	73.7	8.5	5.0	3.1	0.3	2.8	5.8	0.5	0.3	100
2014 Q1	0.0	0.0	0.0	0.0	0.0	0.0	0.0	0.0	0.0	0.0

Source: Transport & Infrastructure Statistics Unit, Statistics Botswana

2.2.1.2 First Registrations by Station

Vehicles registered for the first time in Gaborone were 4,226, which is 48.8 percent of all the first registrations in Q1 2014. Gumare registered only 1 vehicle while Kang recorded no registrations. Even though Gaborone had the most registrations, it was a decrease of 11.2 percent compared to 4,698 registered in the previous quarter. Also in Q1 2014, other registration stations/centers like Maun, Francistown, Molepolole, etc. recorded decreases in first registrations when compared to Q1 2013.

The only stations which recorded an increase in Q1 2014, when compared to Q1 2013, were Bobonong, Kanye, Lethakane, Mochudi, Mogoditshane, Palapye, Selebi-Phikwe, Sowa and Tutume. See Table 11.

Table 11: New Registration by Station and Body Type

Station	Passenger Cars	Vans	Trucks	Mini Buses	Buses	Motor Cycles	Tractors	Trailers	Tankers &Horses	Others	Total	Q1 2013 Total
Bobonong	-	-	-	-	-	-	1	1	-	-	2	-
Francistown	630	70	47	21	2	1	7	38	2	3	821	850
Gaborone	2,548	918	209	154	10	60	50	177	49	51	4,226	4,698
Ghanzi	33	7	5	-	-	-	1	1	-	-	47	84
Gumare	1	-	-	-	-	-	-	-	-	-	1	8
Jwaneng	22	4	1	2	-	-	4	3	-	2	38	43
Kanye	22	-	2	1	-	-	6	2	-	-	33	17
Kasane	26	3	1	1	-	-	-	3	-	-	34	85
Kang	-	-	-	-	-	-	-	-	-	-	-	10
Lethakane	43	6	3	4	-	-	-	2	-	1	59	42
Lobatse	211	41	27	15	3	-	17	17	-	4	335	1,246
Mahalapye	36	51	5	2	1	-	6	2	-	-	103	107
Masunga	3	-	-	-	-	-	-	-	-	-	3	3
Maun	189	64	18	9	1	-	1	13	-	2	297	348
Mochudi	46	9	1	2	-	1	2	5	-	21	87	53
Mogoditsane	1,657	14	140	94	2	1	4	15	1	1	1,929	1,475
Molepolole	16	-	1	2	-	-	8	10	-	-	37	39
Palapye	84	4	8	3	-	-	6	12	-	-	117	96
Ramotswa	46	51	3	1	-	-	2	3	2	7	115	328
S/Phikwe	125	65	9	11	1	-	15	12	1	-	239	227
Serowe	58	39	2	1	1	-	4	9	1	-	115	152
Sowa	1	2	2	-	-	-	-	-	-	-	5	4
Shakawe	-	2	-	-	-	-	-	-	-	-	2	5
Tsabong	2	2	1	-	-	-	-	2	-	-	7	14
Tutume	4	-	1	-	-	-	3	2	-	-	10	7
Total	5,803	1,352	486	323	21	63	137	329	56	92	8,662	9,941

Source: Department of Road Transport and Safety, Ministry of Transport & Communications

2.2.1.3 First Registrations by Make

In the quarter under review, similarly as in past quarters, Toyota recorded the highest number of registrations with 4,069 (47%), whereas there were no vehicles registered under the make of Dodge. Of the 4,069 Toyota vehicles, 2,979 were passenger cars, which is 73.2 percent of all Toyotas registered. 137 Tractors were registered in Q1 2014 and 51.1 percent of the total tractors registered were Massey Ferguson. This is shown in **Table 12**.

Table 12: Motor Vehicle First Registrations by Make and Body Type, Q1 2014

Make	Passenger Cars	Vans	Trucks	Mini Buses	Buses	Motor cycles	Tractors	Trailers	Tankers/Horses	Others	Total
Audi	135	-	-	-	-	-	-	-	-	-	135
BMW	302	-	-	-	-	2	-	-	-	-	304
Chevro	51	144	-	-	-	-	-	-	-	-	195
Chrysler	10	-	-	-	-	-	-	-	-	-	10
Daewoo	1	-	-	-	-	-	-	-	-	-	1
Dodge	-	-	-	-	-	-	-	-	-	-	-
Ford	53	178	-	5	-	-	25	-	-	-	261
Hino	-	-	28	-	2	-	-	-	-	-	30
Honda	331	-	-	-	-	8	-	-	-	-	339
Hyundai	17	-	2	3	-	-	-	-	-	-	22
Isuzu	1	34	6	2	-	-	-	-	2	-	45
Iveco	-	2	2	2	2	-	-	-	1	-	9
Jeep	67	-	-	-	-	-	-	-	-	-	67
Kia	58	2	10	1	-	-	-	-	-	-	71
Land Rover	52	28	-	-	-	-	-	-	-	-	80
Mahindra	-	3	-	-	-	-	-	-	-	-	3
MAN	-	-	18	-	-	-	-	-	10	-	28
Massey Ferg	-	-	-	-	-	-	70	-	-	1	71
Mazda	435	6	43	42	-	-	-	-	-	-	526
M/Benz	194	7	36	7	8	-	-	-	2	2	256
Mitsubishi	82	11	13	6	-	-	-	-	-	-	112
Nissan	316	188	83	51	2	-	-	-	1	-	641
Opel	12	-	-	2	-	-	-	-	-	-	14
Peugeot	16	-	-	-	-	-	-	-	-	-	16
Renault	5	-	1	-	-	-	-	-	1	-	7
Scania	-	-	7	-	2	-	-	-	20	-	29
Subaru	38	-	-	-	-	-	-	-	-	-	38
Toyota	2,979	701	173	197	3	-	-	-	-	16	4,069
VW	519	24	-	4	-	-	-	-	-	-	547
Volvo	61	-	8	-	1	-	-	-	6	1	77
Yamaha	-	-	-	-	-	37	-	-	-	-	37
Other	68	24	56	1	1	16	42	329	13	72	622
Total	5,803	1,352	486	323	21	63	137	329	56	92	8,662

Source: Department of Road Transport and Safety

Table 13: New Registrations by Month and Body Type, Q1 2014

Month	2014											2013 Total
	Passenger Cars	LDVs	Vans	Mini Buses	Buses	Motor Cycles	Tractors	Trailers	Tankers/Horses	Others	Total	
January	1,918	351	146	99	6	22	60	103	8	37	2,750	3,086
February	1,916	451	162	108	6	12	45	90	22	34	2,846	3,202
March	1,969	550	178	116	9	29	32	136	26	21	3,066	3,653
Total	5,803	1,352	486	323	21	63	137	329	56	92	8,662	9,941

Source: Department of Road Transport and Safety

Table 13 above shows that the month of March recorded the highest number of vehicles compared to January and February; this was 35.4 percent of all the registration. However, this was a 19.1 percent decrease compared to March of the previous year. In total Q1 2014 recorded a decrease of 14.8 percent compared to the same quarter of the previous year.

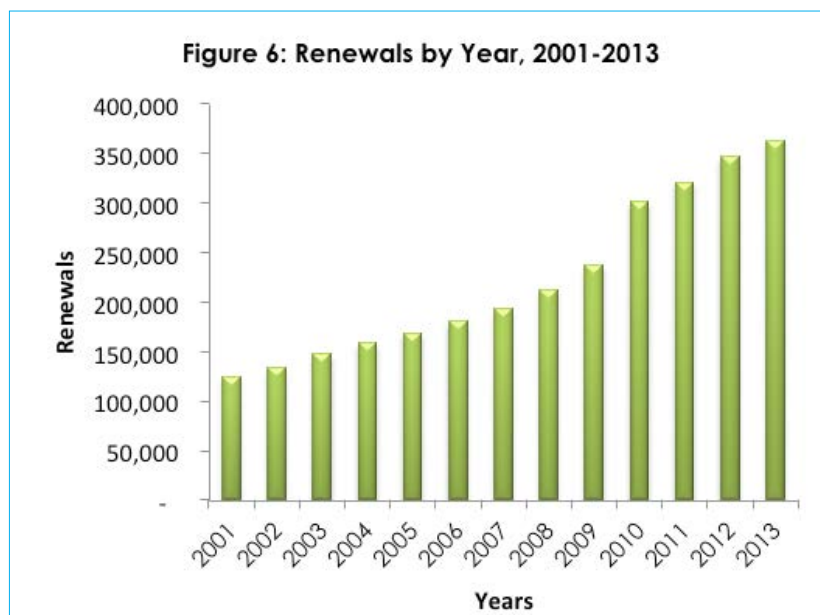
2.2.2 Motor Vehicle License Renewals

Renewals have increased at an increasing rate over the past 13 years, which is from 2001 – 2013. On average an increase of 8.4 percent was recorded each year. The highest increase was in 2010, where 301,502 renewals were recorded compared to the 237,535 renewals recorded in 2009. This was an increase of 21.2 percent. See **Table 14** and **Figure 6**.

Table 14: Motor Vehicle Renewals by Vehicle Type, 2001 - Q1 2014

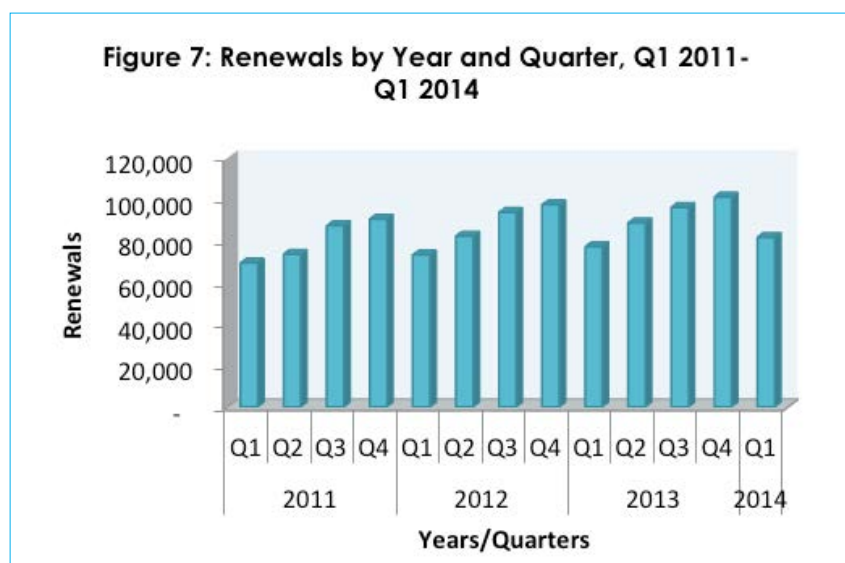
	Passenger Cars	Vans	Trucks	Buses	Motor Cycles	Tractors	Trailers	Tankers/Horses	Others	Total
2001	45,408	57,273	6,429	5,267	696	2,720	5,713	240	1,125	124,871
2002	49,742	60,941	6,420	5,761	698	2,648	5,836	623	1,201	133,870
2003	56,409	65,892	7,003	6,208	707	2,524	6,649	778	1,241	147,411
2004	61,979	69,547	7,502	6,795	743	2,649	7,160	886	1,378	158,639
2005	69,151	71,277	7,773	7,615	662	2,497	7,654	954	1,371	168,954
2006	77,804	72,573	8,533	8,394	646	2,398	7,927	1,053	1,364	180,692
2007	87,442	73,724	9,416	8,738	624	2,324	8,695	1,242	1,322	193,527
2008	99,581	76,845	11,073	9,189	703	2,678	9,469	1,413	1,364	212,315
2009	113,941	81,400	13,240	9,840	801	2,993	10,814	1,604	2,902	237,535
2010	153,989	91,715	18,652	12,243	1,286	4,162	14,688	2,464	2,303	301,502
2011	170,827	91,463	19,879	12,325	1,373	4,633	15,611	2,584	2,365	321,060
2012	191,613	93,585	21,089	12,893	1,413	4,944	16,510	2,893	2,049	346,989
2013	205,854	93,842	21,790	13,696	1,398	5,108	17,135	2,717	1,996	363,536
2011 Q1	36,270	20,551	4,457	2,684	322	833	3,130	618	612	69,477
Q2	38,635	21,664	4,750	2,850	340	695	3,559	619	539	73,651
Q3	46,467	24,852	5,423	3,322	355	1,233	4,332	676	695	87,355
Q4	49,455	24,396	5,249	3,469	356	1,872	4,590	671	519	90,577
2012 Q1	39,321	20,603	4,773	2,781	330	902	3,422	694	498	73,324
Q2	45,001	22,965	5,176	2,973	345	781	3,963	693	545	82,442
Q3	52,065	24,929	5,676	3,575	374	1,329	4,533	758	533	93,772
Q4	55,226	25,088	5,464	3,564	364	1,932	4,592	748	473	97,451
2013 Q1	43,026	20,521	4,800	2,923	347	922	3,540	588	562	77,229
Q2	49,902	23,453	5,635	3,289	383	869	4,102	679	498	88,810
Q3	54,593	24,666	5,702	3,769	328	1,461	4,488	710	491	96,208
Q4	58,333	25,202	5,653	3,715	340	1,856	5,005	740	445	101,289
2014 Q1	45,754	21,777	5,080	3,058	350	956	3,742	555	565	81,837

Source: Department of Road Transport and Safety, Ministry of Transport & Communications



(Motor Vehicle Renewals by Quarters)

During the past three years, 2011 – 2013, renewals have increased from quarter to quarter. Quarter 1 would record the lowest of all renewals and Quarter 4 the highest of all renewals. In Q1 2014, 81,837 vehicle licenses were renewed compared to 73,319 of the same quarter in 2013. This was an increase of 10.4 percent. See Table 14 and Figure 7.

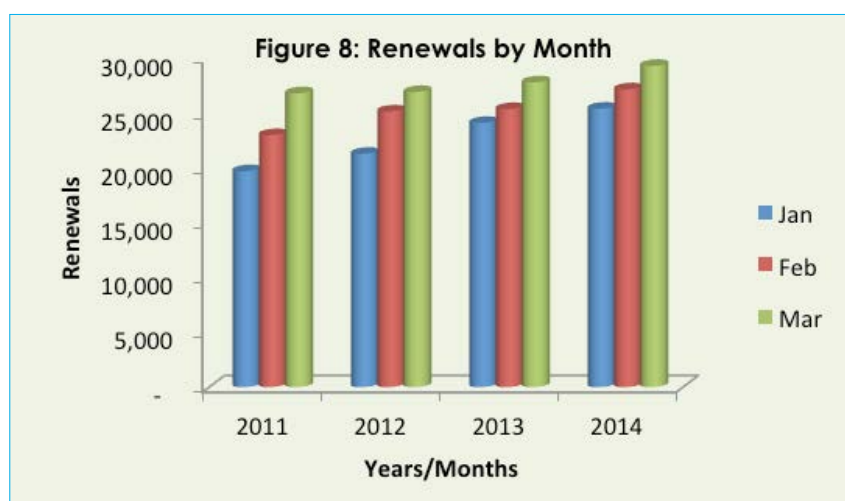


2.2.2.1 Renewals by Registration Month

Table 15: Motor Vehicle Renewals by Month and Body Type, 2013 - Q1 2014

Year/Quarter	Body Type											Previous Years		
	Passenger Cars	Vans	Trucks	Mini Buses	Buses	Motor Cycles	Tractors	Trailers	Horses/Tankers	Others	Total	2012	2011	
	Number													
2013	Jan	13,464	6,248	1,471	830	73	128	394	1,114	189	177	24,088	21,272	19,691
	Feb	14,117	6,852	1,578	832	95	99	289	1,102	185	202	25,351	25,136	22,980
	Mar	15,445	7,421	1,751	967	126	120	239	1,324	214	183	27,790	26,911	26,793
	Q1	43,026	20,521	4,800	2,629	294	347	922	3,540	588	562	77,229	73,319	69,464
	Apr	16,776	7,882	1,949	954	107	141	295	1,354	279	145	29,882	26,359	23,501
	May	17,253	8,157	2,026	1,105	117	143	302	1,374	194	195	30,866	28,668	26,391
	Jun	15,873	7,414	1,660	893	113	99	272	1,374	206	158	28,062	27,411	23,745
	Q2	49,902	23,453	5,635	2,952	337	383	869	4,102	679	498	88,810	82,438	73,637
	July	18,834	8,471	1,952	1,108	120	117	377	1,471	228	149	32,827	31,608	28,358
	Aug	18,482	8,343	2,005	1,227	143	112	534	1,589	237	180	32,852	31,724	30,674
	Sep	17,277	7,852	1,745	1,050	121	99	550	1,428	245	162	30,529	30,449	28,323
	Q3	54,593	24,666	5,702	3,385	384	328	1,461	4,488	710	491	96,208	93,781	87,355
	Oct	17,964	8,419	1,985	1,058	115	107	617	1,612	294	189	32,360	46,756	27,651
	Nov	19,546	8,211	1,786	1,028	180	114	619	1,664	260	150	33,558	47,570	31,534
	Dec	20,823	8,572	1,882	1,170	164	119	620	1,729	186	106	35,371	49,919	31,392
	Q4	58,333	25,202	5,653	3,256	459	340	1,856	5,005	740	445	101,289	144,245	90,577
2014	Jan	14,243	6,646	1,548	838	73	107	389	1,204	153	185	25,386	24,088	21,272
	Feb	15,240	7,184	1,713	949	93	125	287	1,185	195	187	27,158	25,351	25,136
	Mar	16,271	7,947	1,819	1,011	94	118	280	1,353	207	193	29,293	27,790	26,911
	Q1	45,754	21,777	5,080	2,798	260	350	956	3,742	555	565	81,837	77,229	73,319
	Percent of Total													
2013	Jan	55.9	25.9	6.1	3.4	0.3	0.5	1.6	4.6	0.8	0.7	100		
	Feb	55.7	27.0	6.2	3.3	0.4	0.4	1.1	4.3	0.7	0.8	100		
	Mar	55.6	26.7	6.3	3.5	0.5	0.4	0.9	4.8	0.8	0.7	100		
	Q1	55.7	26.6	6.2	3.4	0.4	0.4	1.2	4.6	0.8	0.7	100		
	Apr	56.1	26.4	6.5	3.2	0.4	0.5	1.0	4.5	0.9	0.5	100		
	May	55.9	26.4	6.6	3.6	0.4	0.5	1.0	4.5	0.6	0.6	100		
	Jun	56.6	26.4	5.9	3.2	0.4	0.4	1.0	4.9	0.7	0.6	100		
	Q2	56.2	26.4	6.3	3.3	0.4	0.4	1.0	4.6	0.8	0.6	100		

For Q1 2014, the month of March recorded the highest number of renewals, contributing 35.8 percent of all the renewals. January and February contributed 31.0 and 33.2 percent respectively. The previous three years (2011 – 2013) follow the same trend where March recorded the highest renewals followed by February and then January. See **Table 15** and **Figure 8**.



2.2.2.2 Renewals by Registration Station

Southern District had the highest of renewals with 38,958, which is 47.6 percent of all the renewals for Q1 2014. 32,055 of the total 38,958 were done in Gaborone contributing 82.3 percent of the renewals done in Southern District. Southern District was followed by Central and North-East Districts with 15.7 and 11.3 percent respectively. The district with the least number of renewals was Chobe contributing 1.3 percent of the total renewals.

The station with the highest number of renewals was Gaborone which contributed 39.2 percent of all the renewals done for Q1 2014, followed by Francistown and Mogoditshane. The stations with the least number of renewals were Pitsane, Lerala and Shashe which recorded 1 each whilst several other stations recorded nothing. See **Tables 16 - 19**

Table 16: Motor Vehicle License Renewals by Station and Body Type, Q1 2014

SOUTHERN DISTRICT											
Station	Passenger Cars	Vans	Trucks	Mini Buses	Buses	Motor Cycles	Tractors	Trailers	Horses/Tankers	Others	Total
Digawana	13	9	3	-	-	-	-	-	-	-	25
Gaborone	19,230	7,182	1,867	1,166	90	225	211	1,499	297	288	32,055
Goodhope	133	63	13	7	-	-	6	11	-	-	233
Jwaneng	914	564	93	80	7	5	28	61	2	8	1,762
Kanye	965	632	103	74	8	4	52	50	4	1	1,893
Khakhea	-	-	-	-	-	-	-	-	-	-	-
Lobatse	1,573	636	218	116	15	3	53	189	25	22	2,850
Mabule	-	-	-	-	-	-	-	-	-	-	-
Mabutsane	8	8	1	1	-	-	-	3	-	-	21
Mmathethe	20	13	1	-	-	-	2	1	-	-	37
Moshupa	46	25	6	3	-	-	-	1	-	-	81
Pitsane	1	-	-	-	-	-	-	-	-	-	1
Total	22,903	9,132	2,305	1,447	120	237	352	1,815	328	319	38,958
KGATLENG DISTRICT											
Station	Passenger Cars	Vans	Trucks	Mini Buses	Buses	Motor Cycles	Tractors	Trailers	Horses/Tankers	Others	Total
Bokaa	45	21	4	2	-	-	-	2	-	-	74
Mochudi	1,181	670	143	86	4	10	64	124	5	41	2,328
Oodi	-	-	-	-	-	-	-	-	-	-	-
Sikwane	10	14	3	-	-	-	3	1	-	-	31
Total	1,236	705	150	88	4	10	67	127	5	41	2,433

Source: Department of Road Transport and Safety, Ministry of Transport and Communications

Table 17: Motor Vehicle License Renewals by Station and Body Type, Q1 2014**KWENENG DISTRICT**

Station	Passenger Cars	Vans	Trucks	Mini Buses	Buses	Motor Cycles	Tractors	Trailers	Horses/Tankers	Others	Total
Molepolole	1,173	765	119	79	3	-	45	66	2	12	2,264
Gabane	113	54	16	15	-	-	2	1	-	1	202
Kopong	48	22	6	3	-	-	-	2	-	-	81
Lentsweletau	-	-	-	-	-	-	-	-	-	-	-
Letlhakeng	66	103	4	9	-	-	7	4	-	-	193
Metsimotlhabe	2	-	1	-	-	-	-	-	-	-	3
Mmankodi	22	15	1	2	-	-	-	-	-	-	40
Mogoditshane	3,957	727	408	291	7	26	23	119	15	24	5,597
Motokwe	-	-	-	-	-	-	-	-	-	-	-
Sojwe	3	4	-	-	-	-	-	-	-	-	7
Thamaga	170	93	15	18	1	-	2	3	-	-	302
Thebephatshwa	77	34	3	3	-	-	-	2	-	-	119
Total	5,631	1,817	573	420	11	26	79	197	17	37	8,808

SOUTH EAST DISTRICT

Station	Passenger Cars	Vans	Trucks	Mini Buses	Buses	Motor Cycles	Tractors	Trailers	Horses/Tankers	Others	Total
Ramotswa	799	409	110	66	6	5	10	76	7	24	1,512
Otse	-	-	-	-	-	-	-	-	-	-	-
Taung	28	8	1	-	-	-	-	-	-	-	37
Tlokweng	49	22	3	2	-	-	-	3	-	-	79
Total	876	439	114	68	6	5	10	79	7	24	1,628

CHOBE DISTRICT

Station	Passenger Cars	Vans	Trucks	Mini Buses	Buses	Motor Cycles	Tractors	Trailers	Horses/Tankers	Others	Total
Kasane	499	295	74	25	4	3	47	53	6	11	1,017
Chobe	13	10	1	-	-	-	6	-	-	-	30
Kavimba	-	-	-	-	-	-	-	-	-	-	-
Panda	6	3	-	-	-	-	-	-	-	-	9
Total	518	308	75	25	4	3	53	53	6	11	1,056

GHANZI DISTRICT

Station	Passenger Cars	Vans	Trucks	Mini Buses	Buses	Motor Cycles	Tractors	Trailers	Horses/Tankers	Others	Total
Ghanzi	540	514	45	15	2	6	21	55	4	6	1,208
Charleshill	14	14	-	-	-	-	-	-	-	-	28
Kalkfontein	6	15	2	-	-	-	-	-	-	-	23
Ncojane	-	-	-	-	-	-	-	-	-	-	-
Total	560	543	47	15	2	6	21	55	4	6	1,259

Source: Department of Road Transport and Safety, Ministry of Transport and Communications

Table 18: Motor Vehicle License Renewals by Station and Body Type, Q1 2014

NORTH EAST DISTRICT											
Station	Passenger Cars	Vans	Trucks	Mini Buses	Buses	Motor Cycles	Tractors	Trailers	Horses/Tankers	Others	Total
Francistown	4,263	2,032	606	221	36	21	67	470	98	48	7,862
Maitengwe	-	-	-	-	-	-	-	-	-	-	-
Makaleng	47	34	5	2	-	-	3	2	-	-	93
Masunga	248	144	23	15	-	-	9	12	-	-	451
Mathangwane	21	21	3	-	-	-	1	3	-	-	49
Matsiloje	10	8	-	-	-	-	1	-	-	-	19
Nkange	-	-	-	-	-	-	-	-	-	-	-
Ramokgwebana	20	14	4	1	-	-	-	2	-	-	41
Sebina	18	13	2	1	-	-	-	1	-	-	35
Tshesebe	11	11	2	-	-	-	-	-	-	-	24
Tutume	307	279	61	26	-	1	14	21	-	2	711
Total	4,945	2,556	706	266	36	22	95	511	98	50	9,285
KGALAGADI DISTRICT											
Station	Passenger Cars	Vans	Trucks	Mini Buses	Buses	Motor Cycles	Tractors	Trailers	Horses/Tankers	Others	Total
Hukuntsi	77	91	4	3	-	-	1	3	-	-	179
Kang	81	91	13	6	1	-	-	7	-	2	201
Lehututu	-	-	-	-	-	-	-	-	-	-	-
Middlepits	-	-	-	-	-	-	-	-	-	-	-
Tsabong	292	335	26	16	4	-	5	20	2	1	701
Werda	-	-	-	-	-	-	-	-	-	-	-
Total	450	517	43	25	5	-	6	30	2	3	1,081

Source: Department of Road Transport and Safety, Ministry of Transport and Communications

Table 19: Motor Vehicle License Renewals by Station and Body Type, Q1 2014

CENTRAL DISTRICT											
Station	Passenger Cars	Vans	Trucks	Mini Buses	Buses	Motor Cycles	Tractors	Trailers	Horses/Tankers	Others	Total
Bobonong	309	291	36	11	-	5	20	41	-	6	719
Kalamare	-	-	-	-	-	-	-	-	-	-	-
Lecheng	2	6	2	-	-	-	-	-	-	-	10
Lerala	1	-	-	-	-	-	-	-	-	-	1
Letlhakane	787	649	99	57	9	4	17	50	3	9	1,684
Machaneng	14	12	1	1	-	-	-	1	-	-	29
Mahalapye	948	647	131	42	10	3	40	70	6	5	1,902
Moeng	15	5	1	-	-	-	-	-	-	-	21
Mookane	2	2	1	-	-	-	-	-	-	-	5
Nata	81	54	7	3	1	-	-	2	2	-	150
Orapa	182	108	16	4	1	-	5	16	1	-	333
Palapye	1,158	638	196	63	13	2	38	146	27	12	2,293
Pilikwe	-	-	-	-	-	-	-	-	-	-	-
Rakops	32	41	2	2	-	-	-	3	-	-	80
Ramokgonami	22	23	9	-	-	-	1	1	-	-	56
S/Phikwe	1,736	934	211	87	20	12	54	189	22	16	3,281
Serowe	923	781	116	79	6	4	48	96	3	2	2,058
Shashe	-	1	-	-	-	-	-	-	-	-	1
Shoshong	2	2	-	-	-	-	-	-	-	-	4
Tonota	124	91	16	2	-	-	1	6	-	-	240
Tumasera	7	7	3	-	-	-	2	1	-	-	20
Total	6,345	4,292	847	351	60	30	226	622	64	50	12,887
NORTH WEST DISTRICT											
Station	Passenger Cars	Vans	Trucks	Mini Buses	Buses	Motor Cycles	Tractors	Trailers	Horses/Tankers	Others	Total
Etsha	-	-	-	-	-	-	-	-	-	-	-
Gumare	151	121	20	6	-	2	2	10	2	5	319
Gweta	13	14	1	-	-	-	-	-	-	-	28
Maun	1,849	1,125	183	73	9	9	37	224	19	18	3,546
Sehithwa	17	15	-	-	-	-	-	-	-	-	32
Shakawe	120	97	6	3	-	-	-	9	2	-	237
Sowa	140	96	10	11	3	-	8	10	1	1	280
Total	2,290	1,468	220	93	12	11	47	253	24	24	4,442
Grand Total	-	-	-	-	-	-	-	-	-	-	-

Source: Department of Road Transport and Safety, Ministry of Transport and Communications

2.2.2.3 Renewals by Make

The make that continues to dominate the vehicle market is Toyota. That will always be the case for as long as it keeps being the dominating make under First Registrations. For this quarter, Q1 2014, Toyota constituted 48.0 percent of all the renewals. Massey Ferguson contributed 52.1 percent of all the tractors followed by Ford with 16.5 percent. 37.1 percent of the motor cycles were of the make of Yamaha while Honda was 26.6 percent. See **Table 20**

Table 20: Motor Vehicle Renewals by Make and Body Type, Q1 2014

Make	Passenger Cars	Vans	Trucks	Mini Buses	Buses	Motor cycles	Tractors	Trailers	Tankers/Horses	Others	Total
Audi	847	-	-	-	-	-	-	-	-	-	847
BMW	1,832	-	-	-	-	10	-	-	-	-	1,842
Chevrolet	381	265	1	-	-	-	-	-	-	-	647
Chrysler	95	1	1	-	-	-	-	-	-	-	97
Daewoo	71	-	-	-	-	-	-	-	-	-	71
Dodge	98	2	-	-	-	-	-	-	-	-	100
Ford	945	1,481	10	18	-	-	158	-	2	1	2,615
Hino	-	2	187	2	12	-	-	-	3	2	208
Honda	1,687	-	1	-	-	93	-	-	-	-	1,781
Hyundai	796	80	65	13	-	-	-	-	-	-	954
Isuzu	65	2,276	103	17	6	-	-	-	-	1	2,468
Iveco	-	4	6	24	4	-	-	-	11	-	49
Jeep	320	3	-	-	-	-	-	-	1	-	324
Kia	477	67	50	8	-	-	-	-	-	-	602
Land Rover	587	342	-	-	-	-	-	-	-	-	929
Mahindra	9	76	3	-	-	-	16	-	-	-	104
MAN	-	-	72	-	4	-	1	-	51	2	130
Massey Ferguson	-	-	-	-	-	-	498	1	-	1	500
Mazda	3,009	1,060	262	315	-	-	-	-	-	-	4,646
M/Benz	1,857	39	272	75	61	-	2	-	69	7	2,382
Mitsubishi	1,314	177	13	26	12	-	-	-	-	2	1,544
Nissan	2,762	2,830	899	215	16	-	2	-	-	16	6,740
Opel	544	305	-	3	-	-	-	-	23	-	875
Peugeot	174	15	-	8	-	-	-	-	-	-	197
Renault	107	4	3	-	-	-	-	-	5	-	119
Scania	-	-	66	-	49	-	6	2	185	-	308
Subaru	350	-	-	-	-	-	-	-	-	-	350
Toyota	22,918	11,962	2,444	1,910	51	-	-	-	3	30	39,318
VW	3,294	153	-	125	15	-	-	-	-	-	3,587
Volvo	638	-	38	-	9	-	3	-	48	11	747
Yamaha	-	-	-	-	-	130	-	-	-	-	130
Other	577	633	584	39	21	117	270	3,739	154	492	6,626
Total	45,754	21,777	5,080	2,798	260	350	956	3,742	555	565	81,837

Source: Department of Road Transport and Safety, Ministry of Transport and Communications

2.3. Rail Transport

Rail Transport looks at goods transported by rail and the revenue generated from the conveyance of these goods.

2.3.1. Goods Traffic

Goods are transported by rail within Botswana (Local Traffic), from outside Botswana (Imports), to outside Botswana (Exports) and some Goods pass through Botswana en route to other countries (Transit Traffic). Botswana Origin is goods composed of total exports and local traffic. And Botswana total is Botswana Origin and Total Imports. Total Traffic is Transit Traffic and Botswana Total. Imports and Exports are categorized by direction; for imports it is either the goods are from the North or South or for Exports it is either they are going to the North or South.

From 2012 to 2013 goods conveyed through rail have declined. There has been a combined total of 23,352,179 tonnes of goods transported by rail since 2012 to date (Q1 2014). The highest number of tonnes was recorded in 2002 and thereafter the rail goods traffic has declined at a fluctuating rate. The lowest of the tonnes were recorded in 2006.

On quarterly bases, for the past three years, rail goods traffic decreased and increased from one quarter to another. Comparing Q1 2014 to the previous quarter, there was a 0.8 percent decrease in rail goods traffic. When compared to the same quarter of the previous year, Q1 2014 recorded a decrease of 6.0 percent.

See **Table 21** and **Figure 9**

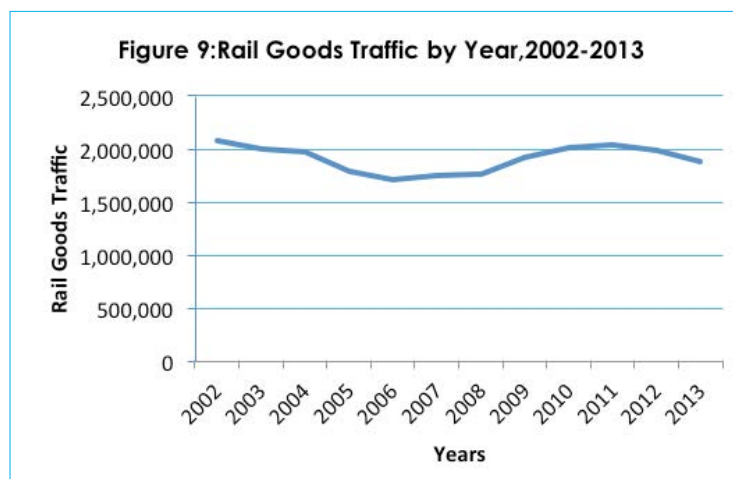


Table 21: Rail Goods Traffic by Direction (Net tonnes), 2002 - Q1 2014

Year/ Quarter	Imports			Exports							
	From North	From South	Total Imports	To North	To South	Total Exports	Local Traffic	Botswana Origin	Botswana Total	Transit Traffic	Total Traffic
2002	144,380	765,830	910,210	134,995	370,710	505,705	372,365	878,070	1,788,280	291,921	2,080,201
2003	127,873	836,992	964,865	106,684	328,433	435,117	356,616	791,733	1,756,598	239,231	1,995,829
2004	118,191	891,812	1,010,003	101,943	383,076	485,019	345,826	830,845	1,840,848	133,249	1,974,097
2005	108,123	687,578	795,701	113,960	456,377	570,337	323,942	894,279	1,689,980	107,071	1,797,051
2006	100,807	644,469	745,276	123,824	386,688	510,512	343,026	853,538	1,598,814	113,793	1,712,607
2007	113,883	758,577	872,460	77,435	456,327	533,762	342,761	876,523	1,748,983	1,677	1,750,660
2008	74,742	768,265	843,007	48,618	483,322	531,940	336,942	868,882	1,711,889	47,610	1,759,499
2009	60,670	1,010,605	1,071,275	25,594	494,325	519,919	292,981	822,900	1,894,175	33,276	1,927,451
2010	62,639	1,002,555	1,065,194	69,247	467,737	536,984	304,633	841,617	1,906,811	104,000	2,010,811
2011	76,754	1,047,444	1,124,198	94,665	457,907	552,572	318,998	871,569	1,995,767	39,044	2,034,811
2012	53,753	960,040	1,013,793	106,189	456,579	562,768	345,451	908,219	1,922,012	62,884	1,984,896
2013	28,060	840,037	868,097	107,763	490,021	597,785	310,277	908,061	1,776,158	107,000	1,883,158
2011 Q1	17,851	269,503	287,354	16,770	121,444	138,214	90,471	228,684	516,036	10,000	526,036
2011 Q2	14,483	276,390	290,873	16,198	111,119	127,317	81,625	208,941	499,814	7,000	506,814
2011 Q3	22,927	274,000	296,927	37,135	105,195	142,330	67,212	209,542	506,470	-1,044	511,514
2011 Q4	21,493	227,551	249,044	24,562	120,149	144,711	79,692	224,403	473,447	17,000	490,447
2012 Q1	16,069	225,092	241,161	32,094	98,360	130,454	89,576	220,030	461,191	29,000	490,191
2012 Q2	10,570	257,367	267,937	29,686	106,831	136,517	70,648	207,165	475,102	11,000	486,102
2012 Q3	7,412	250,174	257,586	22,828	137,403	160,231	89,268	249,499	507,085	18,000	525,085
2012 Q4	19,702	227,407	247,109	21,581	113,985	135,566	95,959	231,525	478,634	4,884	483,518
2013 Q1	12,905	202,174	215,080	22,362	122,047	144,409	90,969	235,378	450,457	19,000	469,457
2013 Q2	10,642	197,475	208,117	26,003	126,246	152,249	87,020	239,268	447,385	39,000	486,385
2013 Q3	4,332	225,080	229,412	33,957	118,933	152,891	73,148	226,038	455,450	27,000	482,450
2013 Q4	181	215,307	215,488	25,442	122,795	148,237	59,140	207,377	422,865	22,000	444,865
2014 Q1	753	182,071	182,824	28,972	136,534	165,506	59,778	225,284	408,108	33,000	441,108

During Q1 2014, the month of January had the highest number of goods transported by rail, contributing 36.1 percent of total traffic. The month of February followed with 32.6 percent. The month of January recorded the lowest tonnes in Imports. See **Table 22**.

Table 22: Rail Goods Traffic by Direction (Net tonnes), 2002 - Q1 2014

		Imports			Exports		Total Exports	Local Traffic	Botswana Origin	Botswana Total	Transit Traffic	Total Traffic
		From North	From South	Total Imports	To North	To South						
2014	Jan	67	71,524	71,591	6,134	51,892	58,026	21,811	79,837	151,428	8,000	159,428
	Feb	456	61,065	61,521	9,111	41,551	50,663	22,438	73,101	134,621	9,000	143,621
	Mar	230	49,482	49,712	13,727	43,091	56,818	15,529	72,347	122,059	16,000	138,059
	Total	753	182,071	182,824	28,972	136,534	165,507	59,778	225,285	408,108	33,000	441,108

Source: Botswana Railways, Ministry of Transport and Communication

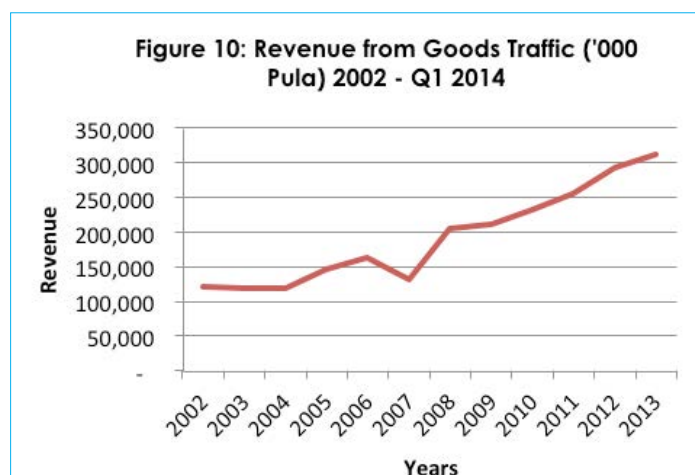
2.3.2 Revenue

Revenue generated from Goods Traffic has been increasing throughout the years even though goods traffic has been on the decline. Revenue took a plunge in 2007 only to rise again the next year and has been on the rise since then. From 2002 to date, a total of 2,392,469 ('000 Pula) revenue has been collected from goods traffic. 37.7 percent of the revenue was from Imports, 38.2 percent was from Exports and 6.3 percent was from Transit Traffic. See Table 23 and Figure 10.

Table 23: Revenue from Goods Traffic ('000 Pula), 2002 - Q1 2014

Year/ Quarter	Imports			Exports		Total						
	From North	From South	Total Imports	To North	To South	Total Exports	Local Traffic	Botswana Origin	Botswana Total	Transit Traffic	Total Traffic	
2002	5,494	28,036	33,530	8,739	34,826	43,565	27,736	71,301	104,831	16,974	121,805	
2003	6,075	38,088	44,163	6,841	30,323	37,164	21,401	58,565	102,728	17,170	119,898	
2004	6,117	44,509	50,626	7,149	36,245	43,394	19,678	63,072	113,698	5,139	118,837	
2005	6,269	40,125	46,394	8,818	48,230	57,048	26,628	83,676	130,070	16,719	146,789	
2006	6,363	39,952	46,315	10,109	56,838	66,947	36,815	103,762	150,077	14,354	164,431	
2007	6,971	19,329	26,300	6,858	59,782	66,640	39,896	106,536	132,836	179	133,015	
2008	4,891	68,517	73,408	4,568	69,181	73,749	35,624	109,373	182,781	22,351	205,132	
2009	3,472	99,185	102,657	3,708	71,576	75,284	29,535	104,819	207,476	3,814	211,290	
2010	3,507	99,093	102,600	8,815	72,358	81,173	38,106	119,279	221,879	11,403	233,282	
2011	5,640	104,980	110,620	12,741	81,400	94,141	45,166	139,307	249,927	5,486	255,413	
2012	3,939	115,705	119,644	15,859	102,133	117,992	47,117	165,172	284,816	8,320	293,136	
2013	2,460	117,333	119,793	17,822	106,419	124,241	47,312	171,554	291,346	21,641	312,987	
2010	Q1	912	25,133	26,045	2,517	17,432	19,949	8,292	28,241	54,286	1,230	55,516
	Q2	792	22,985	23,777	1,658	16,663	18,321	9,508	27,829	51,606	2,711	54,317
	Q3	833	27,009	27,842	2,558	21,152	23,710	10,112	33,822	61,664	5,480	67,144
	Q4	970	23,966	24,936	2,082	17,111	19,193	10,194	29,387	54,323	1,979	56,302
2011	Q1	1,032	23,315	24,347	2,208	19,424	21,632	11,973	33,605	57,952	1,489	59,441
	Q2	1,034	28,143	29,177	2,113	20,184	22,297	11,481	33,778	62,955	1,059	64,014
	Q3	1,982	27,891	29,873	5,053	20,340	25,393	11,689	37,082	66,955	834	67,789
	Q4	1,592	25,631	27,223	3,367	21,452	24,819	10,023	34,842	62,065	2,104	64,169
2012	Q1	1,079	26,598	27,677	4,412	30,810	35,222	11,404	46,626	74,303	3,033	77,336
	Q2	955	32,286	33,241	4,586	20,433	25,019	10,486	35,505	68,746	1,748	70,494
	Q3	611	28,414	29,025	3,524	27,663	31,187	13,120	44,307	73,332	2,784	76,116
	Q4	1,294	28,407	29,701	3,337	23,227	26,564	12,170	38,734	68,435	755	69,190
2013	Q1	1,045	28,337	29,382	3,462	25,347	28,809	13,242	42,051	71,432	3,223	74,655
	Q2	986	26,011	26,997	4,372	27,495	31,867	13,310	45,177	72,174	6,315	78,489
	Q3	400	33,292	33,692	5,784	26,470	32,254	11,346	43,600	77,292	5,612	82,904
	Q4	29	29,693	29,722	4,205	27,107	31,312	9,414	40,726	70,448	6,491	76,939
2014	Q1	100	26,238	26,338	4,926	28,588	33,514	9,178	42,692	69,030	7,424	76,454

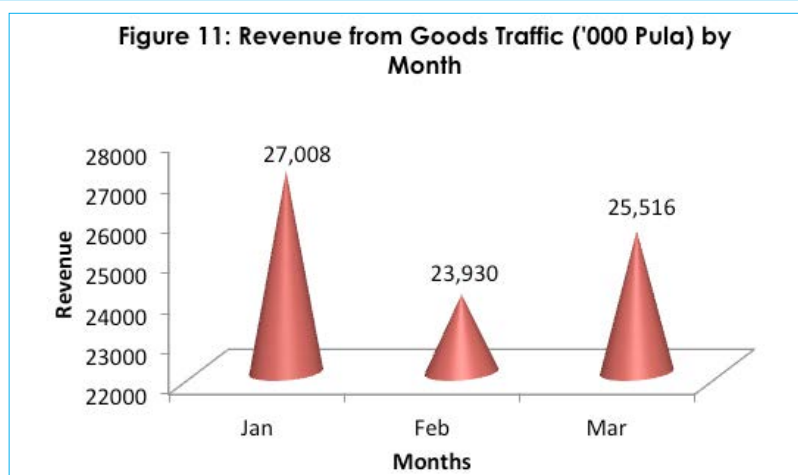
Source: Botswana Railways, Ministry of Transport and Communication



35.3 percent of revenue was generated during the month of January, followed by the month of March with 33.4 percent. February recorded the lowest revenue with 31.3 percent. This is in contrast to rail goods traffic where the February recorded more tonnes of goods than the month of March. See **Table 24** and **Figure 11**.

Table 24: Revenue from Goods Traffic ('000 Pula) by Month

		Imports			Exports							
		From North	From South	Total Imports	To North	To South	Total Exports	Local Traffic	Botswana Origin	Botswana Total	Transit Traffic	Total Traffic
2014	Jan	11	9,820	9,831	1,031	10,476	11,507	3,223	14,730	24,561	2,447	27,008
	Feb	60	8,316	8,376	1,551	8,849	10,400	3,379	13,779	22,155	1,775	23,930
	Mar	29	8,102	8,131	2,344	9,263	11,607	2,576	14,183	22,314	3,202	25,516
	Total	100	26,238	26,338	4,926	28,588	33,514	9,178	42,692	69,030	7,424	76,454



2.4 Water Transport

Kazungula Ferry enhances movement of people, vehicles and goods across the Zambezi River and therefore provides gateway to countries in the north mainly Angola, DRC, Zambia and Zimbabwe. Data for the Mohembo pontoon is not available. Movement of people there is not recorded because it is local; people cross the Okavango River from one point to another within Botswana.

For this quarter, Q1 2014, 87.9 percent of pontoon users were foreigners and 50.4 percent of them used the pontoon to get into Botswana while the remaining 49.6 percent used it to leave the country. A total of 11,984 Batswana used the pontoon where 50.7 percent used it to get into the country and the rest used it to depart from the country. Compared to last quarter, there was a decrease in the number of pontoon passengers; it was a total decrease of 18.2 percent. There was a decline for both Foreign and Batswana passengers; foreign passengers decreased by 17.3 percent and Batswana passengers decreased by 24.1 percent. Compared to the same quarter of the previous year, there was an increase of 16.0 percent in total pontoon passengers.

The month of March recorded the highest number of pontoon passengers; it contributed 34.6 percent of the total pontoon users. It was followed by January with 33.9 percent while February recorded 31.5 percent. See **Table 25**

Table 25: Kazungula Pontoon Passengers by Month and Nationality, 2013

	Foreigners			Batswana			Grand Total
	Arrivals	Departures	Total	Arrivals	Departures	Total	
	<i>Number</i>						
2013 Q1	39,662	37,061	76,723	5,006	4,311	9,317	86,040
Q2	46,349	47,466	93,815	6,406	6,456	12,862	106,677
Q3	53,309	55,371	108,680	7,467	7,595	15,062	123,742
Q4	51,503	54,673	106,176	7,750	8,031	15,781	121,957
	190,823	194,571	385,394	26,629	26,393	53,022	438,416
2014 Jan	15,607	14,589	30,196	1,865	1,731	3,596	33,792
Feb	13,764	13,836	27,600	1,950	1,927	3,877	31,477
Mar	14,856	15,163	30,019	2,269	2,242	4,511	34,530
	44,227	43,588	87,815	6,084	5,900	11,984	99,799

Source: Kazungula Immigration Office