

TOURISM STATISTICS 2009

Published By

Statistics Botswana
Private Bag 0024, Gaborone
Website: www.cso.gov.bw
E-mail: csobots@gov.bw

Contact: Demography Unit
Contact Statistician
Tel: (267) 3934968 / (267)3190718
Fax: (267) 3952201/ 3935628

Printed by and obtainable from
Department of Printing and Publishing Services,
Private Bag 0081
Gaborone
Tel: (267) 3953202, Fax: (267) 3959392

July, 2012

COPYRIGHT RESERVED

**Extracts may be published if source
is duly acknowledged**

PREFACE

This is an annual publication of Statistics Botswana. The information contained in this publication is compiled from the completed Immigration Arrival/Departure forms.

Travelers leaving and entering Botswana are required to complete arrival and departure forms at all gazetted points of entry/departure. In case of those immigration posts handling heavy passenger traffic, recording more than 400 arrivals/departures a month, a ten percent sample of forms is selected for analysis and the resulting figures are finally grossed up accordingly. Forms from boarders with low passenger traffic are not sampled but a 100 percent analysis is done. Botswana citizens are exempted from completing immigration forms. The figures on arrivals and departures contained in this publication therefore cover only non-citizens, both visitors and temporary residents of Botswana.

It is important for the Immigration Department to ensure that the arrival/departure forms are completed properly and by all, as this will help to improve the quality of data.

Users who require more information can contact the Demography Unit of Statistics Botswana at the address on the copyright page.



A. N. Majelantle

Ag Statistician General
July 2012

TABLE OF CONTENTS

| | |
|--|-----|
| PREFACE | i |
| TABLE OF CONTENTS | iii |
| <i>EXECUTIVE SUMMARY</i> | 1 |
| 1.0 Introduction | 1 |
| 2.0 Arrangement of Tables | 1 |
| 3.0 Total Arrivals | 1 |
| 3.1 Arrivals by Nationality | 2 |
| 3.2 Arrivals by Purpose of Entry | 2 |
| 3.3 Distribution of Arrivals by Sex and Age group | 3 |
| 3.4 Arrivals by Border Post | 4 |
| 3.5 Month of Arrival | 4 |
| 3.6 Mode of Travel | 5 |
| 4.0 Total Departures | 5 |
| 4.1 Departures by Nationality | 5 |
| 4.2 Departures by Age | 6 |
| 4.3 Departures by Month, Mode of Travel and Border | 6 |

List of Tables

| | |
|---|----|
| Table 1: Total Arrivals by Nationality and Sex | 7 |
| Table 2 : Total Arrivals by Country of Residence , Sex | 10 |
| Table 3: Total Arrivals by Nationality and purpose of entry | 13 |
| Table 4: Total Arrivals by Country of Residence and Purpose of Entry | 18 |
| Table 5: Total Arrivals by Purpose of Entry and Age-group | 23 |
| Table 6: Total Arrivals by Country of Residence and Age-Group | 24 |
| Table7: Total Arrivals by Nationality and Age-Group | 28 |
| Table 8 : Total Arrivals by Nationality and Month | 33 |
| Table 9: Total Arrivals by Country of Residence and Month | 35 |
| Table 10: Total Arrivals by Boarder Post and Continent of nationality | 37 |
| Table 11: Total Arrivals by Boarder Post and Month of Arrival | 38 |
| Table 12: Total Arrivals by Month of Arrival and mode of travel | 40 |
| Table 13: Total Arrivals by Month and Quarter | 41 |
| Table 14 : Total Departures by nationality and sex | 42 |
| Table 15 : Total Departures by Country of Residence and sex | 45 |
| Table 16: Total departures by Nationality and Age group | 48 |
| Table 17: Total departures by Country of residence and Age group | 53 |
| Table 18: Total Departure by Station, mode of travel and Month | 58 |
| Table 19 : Total Departures by month and mode of travel | 60 |

EXECUTIVE SUMMARY

1.0 Introduction

Tourism Statistics Report is an annual publication containing statistics of non-citizens entering and leaving the country. Country of residence, nationality, purpose of entry, mode of travel, point of entry/departure or border post, age and sex classify the statistics compiled in this report. This information is collected through the border posts from the departure/entry forms, completed by persons crossing the border. It is worth noting that only non-citizens fill this form, as citizens are exempted from filling it.

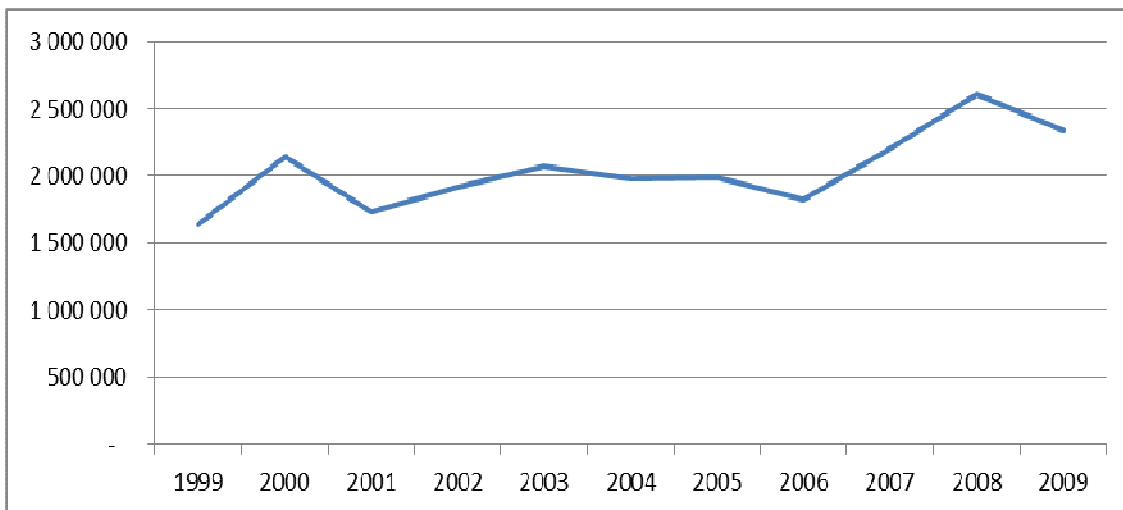
2.0 Arrangement of Tables

Tables in this publication deal with two categories of arrivals and departures; Tables 1 to 13 show information on arrivals, while Tables 14 to 19 provides information on departures.

3.0 Total Arrivals

The number of arrivals in 2009 was 2, 336,288, reflecting a decrease of 10.4 percent from 2,608,886 in the year 2008 (Table 1). Chart 1 shows arrival trends from 1999 up to 2009. The arrivals lingered around 2,000,000 from 1999 to 2007 after which there was a gradual increase in 2007 into 2008 followed by a drop in 2009.

Chart 1: Total Arrivals 1999 – 2009



3.1 Arrivals by Nationality

Most arrivals, constituting 89.0 percent of all arrivals, were from the continent of Africa. Europe accounted for 6 percent, followed by America and Asia by 2 percent each and the lowest percentage arrivals (0.64 percent) were from the Oceania.

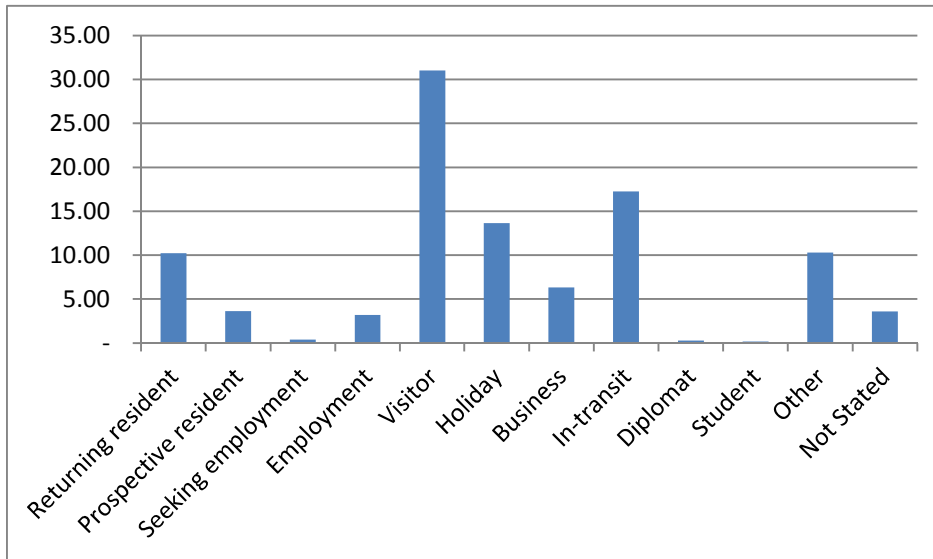
Zimbabwean nationals constituted the highest percentage (46 percent) of all persons entering Botswana in 2009, followed by South Africa (31.1 percent), Zambia (7.5 percent) and Namibia (5.1 percent). The remaining African countries accounted for less than 1 percent each of the total arrivals. (Table1).

3.2 Arrivals by Purpose of Entry

Chart 2 indicates that of all the arrivals in the country, 31.0 percent declared their reason for entry as visiting, followed by those who were in transit (17.3 percent). Those on holiday constituted 13.7 percent of all arrivals. Only 6 percent came for business while 0.4 percent came as job seekers. More males than females entered the country for different reasons.

Of the total arrivals, 46 percent were Zimbabwean nationals. Of these 47.2 percent came as visitor, 10.3 percent were returning residents, about 6 percent were on holiday and less than 1 percent were job seekers. South African nationals entering the country constituted 31.2 percent of all arrivals of which a quarter came as visitors, 15.4 percent were on holiday while 10 percent were on business.

Chart 2: Percentage of Arrivals by Purpose of Entry - 2009

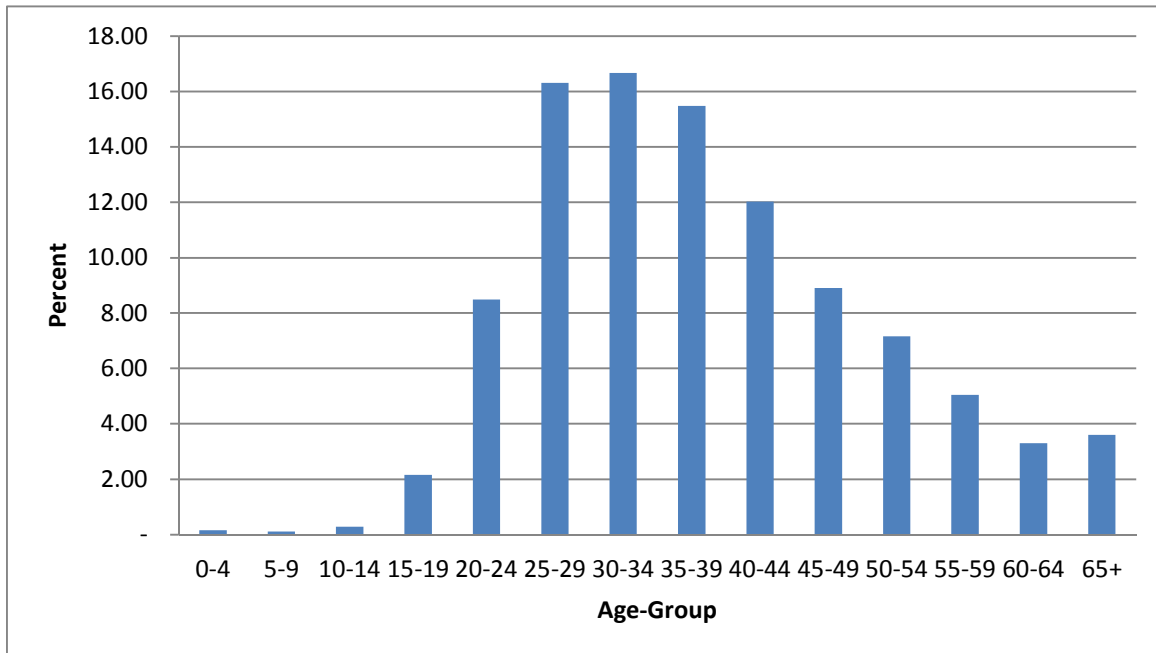


3.3 Distribution of Arrivals by Sex and Age group

Generally there were more male arrivals (1,432,291) compared to their female counterpart (903,997). About 60 percent of all arrivals in 2009 were males (Table 1). Africa and Asia had a high sex differential in arrivals as 62 percent of all arrivals from Africa and 66 percent from Asia were males. Europe followed with 55 percent of its arrivals being males. Males from America and Oceania constituted 48.3 and 51.5 percent of arrivals respectively.

Chart 3 shows that most arrivals in 2009 were in the age groups 25-29 (16.3 percent), 30-34 (16.7 percent), 35-39 (15.5 percent) and 40-44 (12.0 percent). All other age groups recorded less than 10 percent of the total arrivals.

Chart 3: Percentage of Total Arrivals by Age Group - 2009



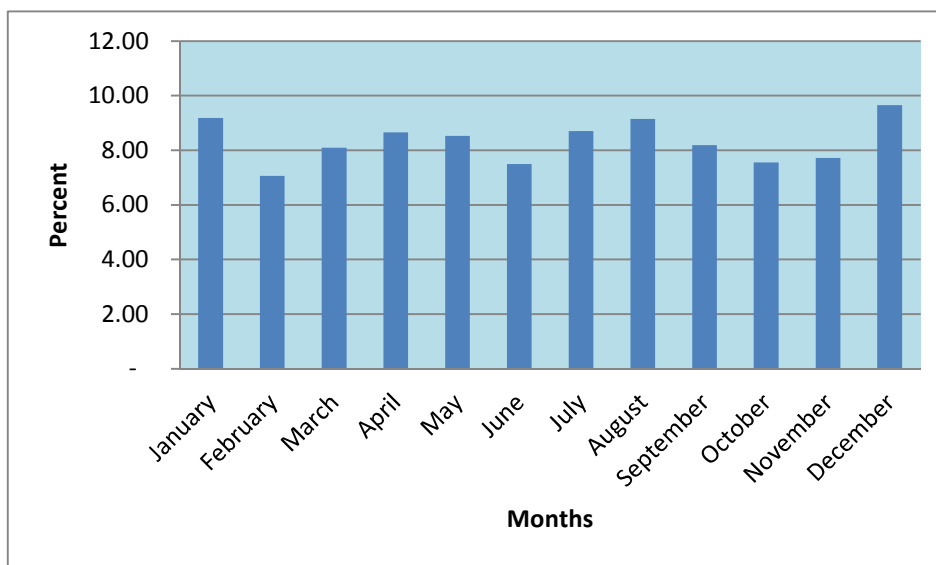
3.4 Arrivals by Border Post

Ramokgwebana border was the busiest of all the borders receiving 814,840 arrivals in 2009, followed by Tlokweng gate by 264,770 (11.3 percent), Kazungula Ferry with 176,330 (7.6 percent), Martins Drift and Pioneer both with 6.3 percent and Ramatlabama border with 5.8 percent. The remaining borders received less than 5 percent of all the arrivals in 2009 (Table 10).

3.5 Month of Arrival

Generally arrivals were well distributed amongst the months of the year. Chart 4 shows that December was the busiest month of arrival with 225,390 (9.7 percent) persons entering the country. It was followed closely by January and August, both receiving 9.2 percent of the total arrivals. The remaining months received arrivals ranging from 7.5 percent to 9.0 percent of the total arrivals (Table 8).

Chart 4: Total Arrivals by Month of Arrivals - 2009



3.6 Mode of Travel

The most common mode of travel is road which was used by 94.0 percent of all persons entering the country (Table 12). This is attributable to the fact that most of the entry points are accessed by road since Botswana is a landlocked country. About 5.0 percent of arrivals were by air and less than a percent of the arrivals used rail.

4.0 Total Departures

A total of 2,340,341 departures were recorded in 2009 (Table 14), a decrease of 6.9 percent from the 2008 departure figure of about 2,512,692. The 2008 figure shows that there were more arrivals than departures. Out of all departures, males constituted the highest proportion of 61.5 percent compared to their female counterparts.

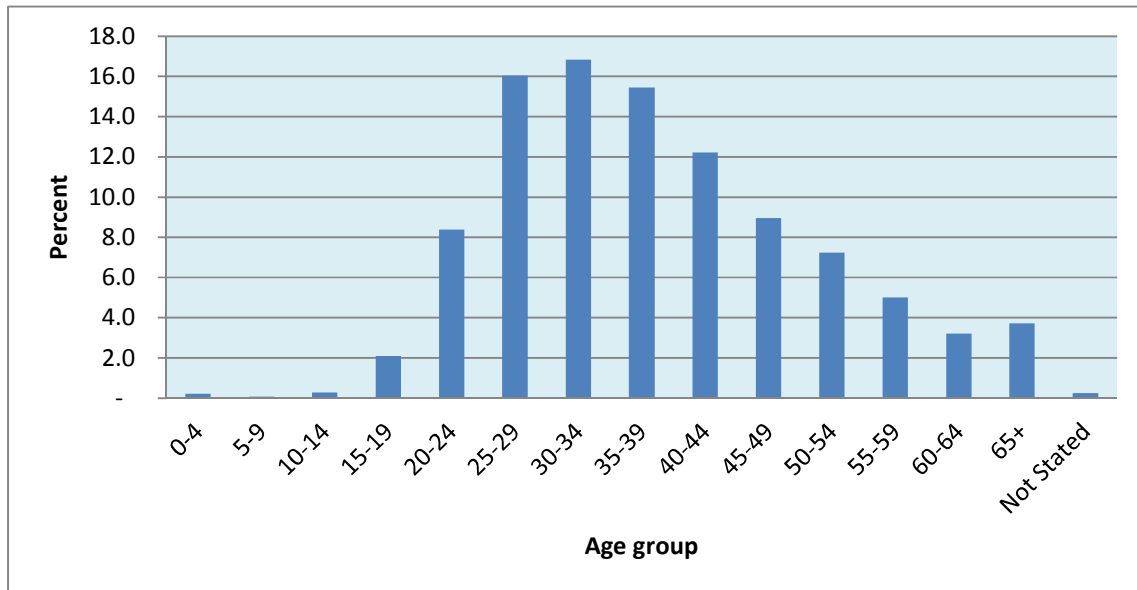
4.1 Departures by Nationality

Departures from Botswana were mostly Southern Africa nationals, with Zimbabwe constituting the highest percentage (43.2 percent) followed by South Africa (31.1 percent), Zambia (7.5 percent) and Namibia (4.9 percent) (Table 14). Departures of European countries nationality accounted for 5.9 percent of all departures, followed by those of American (2 percent), Asian (1.9 percent) and Oceania (0.7 percent) nationalities.

4.2 Departures by Age

A similar pattern to arrivals with regard to age is observed in the departures. The age-groups 25-29, 30-34, 35-39 and 40-44 were more represented accounting for 16.0, 16.8, 15.5 and 12.2 percent of all the departures respectively. This is so because almost the same people who entered the country are bound to depart at one point in time.

Chart 5: Percentage of Total Departure by Age Group - 2009



4.3 Departures by Month, Mode of Travel and Border

The month of December recorded the highest departures (257,746) accounting for 11.0 of all departures, followed by July and August each recording 9 percent of the departures. The lowest number of departures was recorded in February accounting for 6.5 percent of all the departures.

The road is the most commonly used mode of travel used to enter and leave the country. About 93 percent of the departures were by road followed by air (5 percent) and rail was used by less than 2 percent of travellers departing the country.

Ramokgwebana was the busiest of the borders recording 35.6 percent of the total departures. It was followed by Tlokweng gate with 11.5 percent and the rest of the borders recorded less than 10 percent of the departures each.

Table 1: Total Arrivals by Nationality and Sex - 2009

| Country of Residence | Male | Female | Total |
|-----------------------------|------------------|----------------|------------------|
| Africa | 1 287 495 | 788 801 | 2 076 296 |
| Zimbabwe | 526 334 | 466 965 | 993 299 |
| Republic of South Africa | 522 394 | 206 069 | 728 463 |
| Zambia | 111 845 | 62 903 | 174 748 |
| Namibia | 83 549 | 35 316 | 118 865 |
| Malawi | 9 460 | 3 594 | 13 054 |
| Lesotho | 3 770 | 3 229 | 6 999 |
| Kenya | 5 026 | 1 763 | 6 789 |
| Mozambique | 4 966 | 1 514 | 6 480 |
| Swaziland | 4 415 | 1 490 | 5 905 |
| Tanzania | 3 722 | 1 595 | 5 317 |
| Nigeria | 2 399 | 792 | 3 191 |
| Uganda | 1 898 | 692 | 2 590 |
| DRC | 1 763 | 605 | 2 368 |
| Mauritius | 1 022 | 521 | 1 543 |
| Ghana | 809 | 333 | 1 142 |
| Angola | 522 | 331 | 853 |
| Ethiopia | 565 | 260 | 825 |
| Egypt | 443 | 131 | 574 |
| Cameroon | 192 | 80 | 272 |
| Somalia | 210 | - | 210 |
| Sierra leone | 120 | 70 | 190 |
| Senegal | 161 | 10 | 171 |
| Sychelles | 81 | 80 | 161 |
| Libya | 130 | 20 | 150 |
| Madagascar | 110 | 30 | 140 |
| Sudan | 114 | 13 | 127 |
| Rwanda | 60 | 30 | 90 |
| Reunion | 70 | 20 | 90 |
| Guinea | 60 | 10 | 70 |
| Cote d ivore | 51 | 11 | 62 |
| Benin | 50 | 10 | 60 |
| Algeria | 50 | - | 50 |
| Tunisia | 30 | 20 | 50 |
| Burkina faso | 40 | 10 | 50 |
| Togo | 40 | 10 | 50 |
| Gambia | 43 | 2 | 45 |
| Morocco | 30 | 11 | 41 |
| Comoro | 10 | 30 | 40 |
| Other Africa | 951 | 231 | 1 182 |

Table 1: Total Arrivals by Nationality and Sex - 2009 (Cont'd)

| Country of Residence | Male | Female | Total |
|-----------------------------|---------------|---------------|----------------|
| America | 23 220 | 24 811 | 48 031 |
| United States America | 18 471 | 20 347 | 38 818 |
| Canada | 3 422 | 3 462 | 6 884 |
| Brazil | 350 | 214 | 564 |
| Argentina | 191 | 183 | 374 |
| Jamaica | 130 | 120 | 250 |
| Mexico | 128 | 117 | 245 |
| Cuba | 130 | 50 | 180 |
| Trinidad | 70 | 40 | 110 |
| Belize | 63 | 43 | 106 |
| Colombia | 71 | 30 | 101 |
| Chile | 41 | 21 | 62 |
| Peru | 11 | 50 | 61 |
| Paraguay | 20 | 20 | 40 |
| Venezuela | 40 | - | 40 |
| Other America | 82 | 114 | 196 |
| Europe | 77 702 | 64 270 | 141 972 |
| United Kingdom | 26 854 | 20 023 | 46 877 |
| Germany | 13 860 | 12 644 | 26 504 |
| Netherlands | 7 129 | 7 091 | 14 220 |
| France | 5 740 | 4 316 | 10 056 |
| Italy | 3 565 | 3 133 | 6 698 |
| Spain | 2 726 | 2 420 | 5 146 |
| Switzerland | 2 599 | 2 412 | 5 011 |
| Belgiumluxenburg | 2 387 | 1 712 | 4 099 |
| Ireland | 1 706 | 1 289 | 2 995 |
| Denmark | 1 342 | 1 552 | 2 894 |
| Austria | 1 622 | 1 081 | 2 703 |
| Sweden | 1 347 | 1 134 | 2 481 |
| Portugal | 1 384 | 760 | 2 144 |
| Norway | 971 | 1 036 | 2 007 |
| Russia | 1 031 | 970 | 2 001 |
| Poland | 592 | 454 | 1 046 |
| Finland | 335 | 496 | 831 |
| Yugoslavia | 511 | 201 | 712 |
| Czechoslovakia | 358 | 284 | 642 |
| Bulgaria | 262 | 161 | 423 |
| Greece | 263 | 152 | 415 |
| Hungary | 212 | 161 | 373 |
| Romania | 153 | 162 | 315 |
| Slovakia | 120 | 141 | 261 |
| Croatia | 130 | 80 | 210 |
| Ukraine | 102 | 91 | 193 |

Table 1: Total Arrivals by Nationality and Sex - 2009 (Cont'd)

| Country of Residence | Male | Female | Total |
|-----------------------------|------------------|----------------|------------------|
| Luxembourg | 40 | 40 | 80 |
| Latvia | 30 | 42 | 72 |
| Estonia | 21 | 30 | 51 |
| Iceland | 30 | 10 | 40 |
| Lithuania | 20 | 20 | 40 |
| Other Europe | 260 | 172 | 432 |
| Asia | 30 710 | 15 881 | 46 591 |
| India | 13 236 | 5 461 | 18 697 |
| China | 6 095 | 2 303 | 8 398 |
| Japan | 3 307 | 4 310 | 7 617 |
| Pakistan | 1 793 | 544 | 2 337 |
| Sri lanka | 1 389 | 582 | 1 971 |
| Korea | 861 | 910 | 1 771 |
| Bangladesh | 1 336 | 224 | 1 560 |
| Israel | 907 | 413 | 1 320 |
| Malaysia | 280 | 150 | 430 |
| Singapore | 261 | 143 | 404 |
| Philippines | 118 | 164 | 282 |
| Lebanon | 230 | 10 | 240 |
| Hong kong | 130 | 81 | 211 |
| Taiwan | 130 | 60 | 190 |
| Cyprus | 120 | 61 | 181 |
| Turkey | 90 | 72 | 162 |
| Thailand | 45 | 91 | 136 |
| Iran | 72 | 42 | 114 |
| Myanmar | 60 | 40 | 100 |
| Vietnam | 40 | 40 | 80 |
| Indonesia | 40 | 30 | 70 |
| Jordan | 30 | 20 | 50 |
| Other Asia | 130 | 130 | 260 |
| Oceania | 7 692 | 7 230 | 14 922 |
| Australia | 6 067 | 5 955 | 12 022 |
| New zealand | 1 585 | 1 265 | 2 850 |
| Other Oceania | 40 | 10 | 50 |
| Not Stated | 5 472 | 3 004 | 8 476 |
| Total Arrivals | 1 432 291 | 903 997 | 2 336 288 |

Table 2 : Total Arrivals by Country of Residence , Sex - Year 2009

| | Male | Female | Total |
|------------------------------|------------------|----------------|------------------|
| Africa | 1 311 658 | 800 234 | 2 111 892 |
| Zimbabwe | 413 929 | 425 418 | 839 347 |
| Republic of South Africa | 502 815 | 183 616 | 686 431 |
| Botswana | 183 838 | 87 255 | 271 093 |
| Zambia | 101 038 | 57 351 | 158 389 |
| Namibia | 85 591 | 36 927 | 122 518 |
| Lesotho | 2 956 | 2 520 | 5 476 |
| Malawi | 4 006 | 1 392 | 5 398 |
| Swaziland | 4 032 | 1 322 | 5 354 |
| Mozambique | 3 374 | 884 | 4 258 |
| Tanzania | 2 342 | 881 | 3 223 |
| Kenya | 2 285 | 764 | 3 049 |
| Democratic Republic of Congo | 1 220 | 333 | 1 553 |
| Uganda | 966 | 360 | 1 326 |
| Angola | 502 | 245 | 747 |
| Mauritius | 530 | 191 | 721 |
| Nigeria | 477 | 170 | 647 |
| Ghana | 252 | 101 | 353 |
| Ethiopia | 221 | 50 | 271 |
| Egypt | 191 | 70 | 261 |
| Madagascar | 90 | 70 | 160 |
| Cameroon | 112 | 30 | 142 |
| Rwanda | 90 | 31 | 121 |
| Senegal | 93 | 20 | 113 |
| Tunisia | 70 | 30 | 100 |
| Sychelles | 42 | 50 | 92 |
| Libya | 70 | 20 | 90 |
| Sudan | 41 | 10 | 51 |
| Morocco | 40 | 10 | 50 |
| Benin | 40 | 10 | 50 |
| Sierra leone | 40 | 10 | 50 |
| Reunion | 30 | 10 | 40 |
| Somalia | 40 | - | 40 |
| Other Africa | 295 | 83 | 378 |

Table 2 : Total Arrivals by Country of Residence , Sex - Year 2009 (Cont'd)

| | Male | Female | Total |
|-----------------------|---------------|---------------|----------------|
| America | 19 994 | 21 669 | 41 663 |
| United States America | 16 469 | 18 070 | 34 539 |
| Canada | 2 776 | 2 978 | 5 754 |
| Brazil | 250 | 146 | 396 |
| Argentina | 111 | 132 | 243 |
| Mexico | 89 | 77 | 166 |
| Cuba | 51 | 30 | 81 |
| Jamaica | 30 | 50 | 80 |
| Chile | 33 | 31 | 64 |
| Trinidad | 50 | 11 | 61 |
| Colombia | 20 | 20 | 40 |
| Peru | 10 | 30 | 40 |
| Other America | 105 | 84 | 189 |
| | | | |
| Europe | 56 457 | 50 769 | 107 226 |
| United Kingdom | 15 123 | 13 210 | 28 333 |
| Germany | 11 801 | 11 103 | 22 904 |
| Netherlands | 6 074 | 6 082 | 12 156 |
| France | 4 785 | 3 694 | 8 479 |
| Italy | 2 796 | 2 690 | 5 486 |
| Spain | 2 594 | 2 299 | 4 893 |
| Switzerland | 2 477 | 2 281 | 4 758 |
| Belgiumluxenburg | 1 918 | 1 346 | 3 264 |
| Denmark | 1 033 | 1 178 | 2 211 |
| Austria | 1 200 | 958 | 2 158 |
| Sweden | 1 130 | 981 | 2 111 |
| Norway | 828 | 955 | 1 783 |
| Ireland | 933 | 838 | 1 771 |
| Russia | 850 | 829 | 1 679 |
| Portugal | 791 | 444 | 1 235 |
| Poland | 399 | 382 | 781 |
| Finland | 245 | 414 | 659 |
| Czechoslovakia | 297 | 254 | 551 |
| Hungary | 211 | 142 | 353 |
| Romania | 123 | 141 | 264 |
| Greece | 155 | 74 | 229 |
| Slovakia | 90 | 80 | 170 |
| Ukraine | 112 | 51 | 163 |
| Luxembourg | 60 | 90 | 150 |
| Croatia | 60 | 50 | 110 |
| Bulgaria | 70 | 21 | 91 |
| Latvia | 40 | 10 | 50 |
| Lithuania | 30 | 10 | 40 |
| Yugoslavia | 40 | - | 40 |
| Other Europe | 192 | 162 | 354 |

Table 2 : Total Arrivals by Country of Residence , Sex - Year 2009 (Cont'd)

| | Male | Female | Total |
|-----------------------|------------------|----------------|------------------|
| Asia | 12 214 | 8 494 | 20 708 |
| Japan | 2 919 | 4 067 | 6 986 |
| India | 3 102 | 1 191 | 4 293 |
| China | 2 851 | 1 126 | 3 977 |
| Korea | 510 | 650 | 1 160 |
| Israel | 607 | 294 | 901 |
| Pakistan | 295 | 181 | 476 |
| Malaysia | 280 | 140 | 420 |
| Singapore | 254 | 147 | 401 |
| Sri lanka | 241 | 70 | 311 |
| Bangladesh | 283 | 23 | 306 |
| Hong kong | 163 | 116 | 279 |
| Turkey | 92 | 83 | 175 |
| Philippines | 78 | 47 | 125 |
| Taiwan | 70 | 40 | 110 |
| Thailand | 35 | 60 | 95 |
| Lebanon | 60 | 20 | 80 |
| Cyprus | 50 | 21 | 71 |
| Iran | 40 | 31 | 71 |
| Vietnam | 41 | 11 | 52 |
| Indonesia | 21 | 20 | 41 |
| Jordan | 30 | 10 | 40 |
| Saudi arabia | 20 | 20 | 40 |
| Other Asia | 172 | 126 | 298 |
| Oceania | 6 336 | 6 751 | 13 087 |
| Australia | 5 408 | 5 611 | 11 019 |
| New zealand | 918 | 1 140 | 2 058 |
| Other Oceania | 10 | - | 10 |
| Not Stated | 25 632 | 16 080 | 41 712 |
| Total Arrivals | 1 432 291 | 903 997 | 2 336 288 |

Table 3: Total Arrivals by Nationality and purpose of entry - 2009

| Nationality | PURPOSE OF ENTRY | | | | | | | | | | | | Total |
|---------------|--------------------|----------------------|--------------------|---------------|----------------|----------------|----------------|----------------|--------------|--------------|----------------|---------------|------------------|
| | Returning resident | Prospective resident | Seeking employment | Employment | Visitor | Holiday | Business | In-transit | Diplomat | Student | Other | Not Stated | |
| Africa | 196 031 | 80 763 | 7 638 | 43 604 | 705 921 | 199 869 | 138 287 | 388 054 | 5 175 | 3 082 | 229 963 | 77 909 | 2 076 296 |
| Zimbabwe | 102 009 | 40 414 | 2 357 | 20 959 | 469 249 | 60 649 | 46 780 | 82 394 | 1 542 | 1 120 | 133 729 | 32 097 | 993 299 |
| South Africa | 62 506 | 25 526 | 4 116 | 18 809 | 178 833 | 109 538 | 73 450 | 165 198 | 1 681 | 781 | 52 868 | 35 157 | 728 463 |
| Zambia | 13 183 | 6 981 | 480 | 1 534 | 32 904 | 18 886 | 11 500 | 55 638 | 570 | 400 | 27 661 | 5 011 | 174 748 |
| Namibia | 1 541 | 5 464 | 485 | 836 | 11 844 | 3 901 | 2 914 | 77 589 | 352 | 141 | 10 681 | 3 117 | 118 865 |
| Malawi | 2 896 | 520 | 30 | 250 | 3 884 | 1 272 | 551 | 1 880 | 70 | 100 | 1 211 | 390 | 13 054 |
| Lesotho | 1 150 | 330 | 50 | 230 | 2 168 | 973 | 621 | 401 | 140 | 90 | 543 | 303 | 6 999 |
| Kenya | 2 911 | 250 | 50 | 232 | 1 053 | 799 | 232 | 450 | 50 | 60 | 520 | 182 | 6 789 |
| Mozambique | 830 | 361 | - | 90 | 1 811 | 730 | 384 | 1 232 | 90 | 30 | 651 | 271 | 6 480 |
| Swaziland | 574 | 261 | 10 | 260 | 986 | 890 | 841 | 1 270 | 70 | 120 | 372 | 251 | 5 905 |
| Tanzania | 1 563 | 203 | 50 | 60 | 847 | 525 | 254 | 1 071 | 60 | 50 | 362 | 272 | 5 317 |
| Nigeria | 2 136 | 51 | - | 50 | 331 | 130 | 80 | 20 | 40 | 40 | 201 | 112 | 3 191 |
| Uganda | 721 | 220 | - | 21 | 720 | 261 | 112 | 141 | 20 | 30 | 210 | 134 | 2 590 |
| DRC | 807 | 100 | - | 81 | 192 | 182 | 64 | 530 | 40 | 40 | 202 | 130 | 2 368 |
| Mauritius | 594 | 10 | - | 31 | 233 | 230 | 102 | - | 40 | - | 212 | 91 | 1 543 |
| Ghana | 687 | 21 | - | 10 | 112 | 100 | 52 | - | 20 | 20 | 90 | 30 | 1 142 |
| Angola | 140 | - | 10 | - | 130 | 171 | 41 | 140 | 60 | - | 120 | 41 | 853 |
| Ethiopia | 474 | 30 | - | 10 | 60 | 111 | 20 | 10 | 20 | 10 | 40 | 40 | 825 |
| Egypt | 224 | - | - | 20 | 100 | 50 | 40 | 10 | 10 | - | 40 | 80 | 574 |
| Cameroon | 110 | - | - | - | 40 | 40 | 2 | - | 10 | 10 | 40 | 20 | 272 |
| Somalia | 130 | 10 | - | - | 30 | 20 | 10 | - | - | - | - | - | 200 |
| Sierra leone | 70 | - | - | 10 | 10 | 10 | 40 | - | 10 | 20 | 10 | 10 | 190 |
| Senegal | 10 | - | - | 10 | 11 | 50 | 30 | 10 | 20 | - | - | 30 | 171 |
| Seychelles | 20 | 1 | - | - | 20 | 60 | 10 | - | 20 | - | 20 | 10 | 161 |
| Libya | 40 | - | - | - | 30 | 40 | 20 | - | - | - | 20 | - | 150 |
| Madagascar | - | - | - | 10 | 10 | 40 | - | 20 | 30 | - | 30 | - | 140 |
| Sudan | 104 | - | - | 1 | 2 | - | 10 | - | - | - | - | 10 | 127 |

Table 3: Total Arrivals by Nationality and purpose of entry - 2009 (cont'd)

| | P U R P O S E O F E N T R Y | | | | | | | | | | | | Total |
|----------------|-----------------------------|-------------|------------|--------------|--------------|---------------|--------------|--------------|------------|------------|--------------|------------|---------------|
| | Returning | Prospective | Seeking | | Visitor | Holiday | Business | In-transit | Diplomat | Student | Other | Not Stated | |
| | resident | resident | employment | Employment | | | | | | | | | |
| Rwanda | - | - | - | - | 10 | 10 | 20 | - | - | - | 30 | 20 | 90 |
| Reunion | 20 | 10 | - | 10 | 20 | 10 | 10 | - | - | - | 10 | - | 90 |
| Guinea | 30 | - | - | - | 10 | - | - | 10 | 10 | - | 10 | - | 70 |
| Cote d ivore | 30 | - | - | - | - | 20 | 2 | - | - | - | 10 | - | 62 |
| Benin | - | - | - | - | 10 | - | 10 | - | 10 | - | 30 | - | 60 |
| Algeria | 10 | - | - | - | - | 40 | - | - | - | - | - | - | 50 |
| Tunisia | - | - | - | 10 | 20 | 10 | 10 | - | - | - | - | - | 50 |
| Burkina faso | - | - | - | - | 20 | 10 | - | - | - | - | 10 | 10 | 50 |
| Togo | - | - | - | - | 10 | 20 | 20 | - | - | - | - | - | 50 |
| Other Africa | 511 | - | - | 70 | 211 | 91 | 55 | 40 | 190 | 20 | 30 | 90 | 1 308 |
| America | 4 345 | 965 | 324 | 7 424 | 2 667 | 26 453 | 1 360 | 1 854 | 362 | 332 | 1 288 | 657 | 48 031 |
| USA | 2 983 | 835 | 264 | 6 108 | 2 018 | 21 880 | 1 137 | 1 494 | 282 | 262 | 1 038 | 517 | 38 818 |
| Canada | 861 | 80 | 45 | 1 103 | 386 | 3 684 | 168 | 200 | 50 | 60 | 178 | 69 | 6 884 |
| Brazil | 80 | 30 | - | 51 | 41 | 259 | 33 | 50 | 10 | - | 10 | - | 564 |
| Argentina | 91 | - | 1 | 41 | 50 | 130 | 1 | 10 | - | - | 20 | 30 | 374 |
| Jamaica | 110 | 10 | - | 10 | 40 | 50 | - | - | - | - | 10 | 20 | 250 |
| Mexico | - | - | 4 | 41 | 10 | 160 | - | 30 | - | - | - | - | 245 |
| Cuba | 60 | - | - | 20 | 40 | 20 | - | 10 | 20 | - | 10 | - | 180 |
| Trinidad | 60 | - | - | 10 | - | 20 | 10 | - | - | - | 10 | - | 110 |
| Belize | - | - | - | 10 | 22 | 13 | - | 60 | - | - | 1 | - | 106 |
| Colombia | 10 | - | - | 10 | 20 | 61 | - | - | - | - | - | - | 101 |
| Chile | - | - | 10 | 20 | - | 11 | 1 | - | - | 10 | - | 10 | 62 |
| Peru | 20 | - | - | - | 10 | 31 | - | - | - | - | - | - | 61 |
| Other America | 70 | 10 | - | - | 30 | 134 | 10 | - | - | - | 11 | 11 | 276 |

Table 3: Total Arrivals by Nationality and purpose of entry - 2009 (cont'd)

| | P U R P O S E O F E N T R Y | | | | | | | | | | | | Total |
|----------------|-----------------------------|--------------|------------|---------------|--------------|---------------|--------------|---------------|------------|------------|--------------|--------------|----------------|
| | Returning | Prospective | Seeking | | Visitor | Holiday | Business | In-transit | Diplomat | Student | Other | Not Stated | |
| | resident | resident | employment | Employment | | | | | | | | | |
| Europe | 16 730 | 1 568 | 684 | 18 536 | 8 669 | 72 022 | 4 931 | 11 280 | 364 | 332 | 3 967 | 2 889 | 141 972 |
| United Kingdom | 10 171 | 566 | 190 | 3 584 | 4 359 | 20 351 | 2 599 | 2 900 | 43 | 61 | 1 230 | 823 | 46 877 |
| Germany | 1 159 | 321 | 236 | 4 671 | 856 | 14 140 | 346 | 3 420 | 103 | 60 | 683 | 509 | 26 504 |
| Netherlands | 637 | 111 | 32 | 2 686 | 598 | 8 167 | 254 | 990 | 11 | 10 | 355 | 369 | 14 220 |
| France | 581 | 82 | 23 | 1 592 | 519 | 5 718 | 420 | 482 | 51 | 10 | 331 | 247 | 10 056 |
| Italy | 425 | 52 | 26 | 857 | 217 | 4 274 | 114 | 481 | 10 | - | 103 | 139 | 6 698 |
| Spain | 80 | 30 | 12 | 716 | 131 | 3 597 | 83 | 353 | 1 | - | 91 | 52 | 5 146 |
| Switzerland | 207 | 64 | 26 | 931 | 144 | 2 852 | 103 | 446 | 2 | 10 | 98 | 128 | 5 011 |
| Belgiumlux | 301 | 21 | 10 | 596 | 272 | 2 224 | 104 | 314 | 40 | 30 | 105 | 82 | 4 099 |
| Ireland | 571 | 40 | 21 | 274 | 230 | 1 403 | 127 | 204 | 21 | 10 | 83 | 11 | 2 995 |
| Denmark | 204 | 30 | - | 454 | 161 | 1 461 | 80 | 311 | - | - | 122 | 71 | 2 894 |
| Austria | 196 | 20 | 42 | 483 | 151 | 1 401 | 64 | 261 | - | - | 52 | 33 | 2 703 |
| Sweden | 182 | 30 | 10 | 404 | 132 | 1 126 | 132 | 181 | 10 | 50 | 153 | 71 | 2 481 |
| Portugal | 380 | 40 | 1 | 141 | 224 | 709 | 140 | 264 | - | - | 155 | 90 | 2 144 |
| Norway | 122 | 30 | 14 | 261 | 111 | 1 187 | 81 | 30 | 10 | 51 | 80 | 30 | 2 007 |
| Russia | 130 | 30 | 10 | 285 | 170 | 880 | 82 | 220 | 51 | - | 75 | 68 | 2 001 |
| Poland | 121 | 20 | - | 171 | 100 | 441 | - | 111 | - | - | 70 | 12 | 1 046 |
| Finland | 70 | 30 | 20 | 102 | 2 | 455 | 41 | 50 | 11 | 30 | 20 | - | 831 |
| Yugoslavia | 500 | 30 | - | 20 | 50 | 50 | 20 | 2 | - | - | 30 | 10 | 712 |
| Czechoslovakia | 50 | 1 | - | 133 | 21 | 315 | 11 | 60 | - | - | 10 | 41 | 642 |
| Bulgaria | 210 | 10 | 10 | 12 | 71 | 70 | - | 20 | - | - | - | 20 | 423 |
| Greece | 80 | 10 | - | 40 | 30 | 175 | 10 | 20 | - | - | 20 | 30 | 415 |
| Hungary | - | - | - | 21 | 50 | 210 | 20 | 40 | - | - | 11 | 21 | 373 |
| Romania | - | - | 1 | 30 | - | 173 | 20 | 60 | - | 10 | 10 | 11 | 315 |
| Slovakia | 41 | - | - | 10 | 20 | 130 | - | 10 | - | - | 40 | 10 | 261 |
| Croatia | 90 | - | - | - | 20 | 70 | 10 | - | - | - | 20 | - | 210 |
| Ukraine | 40 | - | - | 10 | - | 122 | 10 | - | - | - | 10 | 1 | 193 |
| Luxembourg | - | - | - | 10 | 10 | 50 | 10 | - | - | - | - | - | 80 |

Table 3: Total Arrivals by Nationality and purpose of entry - 2009 (cont'd)

| | P U R P O S E O F E N T R Y | | | | | | | | | | | | Total |
|--------------|-----------------------------|-------------|------------|--------------|--------------|---------------|--------------|------------|------------|-----------|--------------|--------------|---------------|
| | Returning | Prospective | Seeking | | Visitor | Holiday | Business | In-transit | Diplomat | Student | Other | Not Stated | |
| | resident | resident | employment | Employment | | | | | | | | | |
| Latvia | 32 | - | - | - | - | 40 | - | - | - | - | - | - | 72 |
| Estonia | - | - | - | 10 | - | 31 | 10 | - | - | - | - | - | 51 |
| Other Europe | 150 | - | - | 32 | 20 | 200 | 40 | 50 | - | - | 10 | 10 | 512 |
| Asia | 20 150 | 807 | 94 | 2 437 | 4 155 | 11 215 | 1 475 | 331 | 370 | 40 | 3 599 | 1 918 | 46 591 |
| India | 12 302 | 384 | 35 | 572 | 1 691 | 1 017 | 372 | 70 | 80 | 10 | 1 492 | 672 | 18 697 |
| China | 2 790 | 160 | 10 | 621 | 1 080 | 1 182 | 581 | 30 | 120 | 10 | 1 084 | 730 | 8 398 |
| Japan | 111 | 30 | 11 | 631 | 170 | 6 172 | 201 | 60 | 90 | - | 71 | 70 | 7 617 |
| Pakistan | 1 332 | 80 | 1 | 20 | 311 | 112 | 60 | - | - | - | 286 | 135 | 2 337 |
| Sri lanka | 1 449 | 10 | - | 91 | 120 | 120 | 10 | 10 | 10 | - | 101 | 50 | 1 971 |
| Korea | 250 | 10 | 10 | 100 | 170 | 1 050 | 40 | 80 | - | - | 51 | 10 | 1 771 |
| Bangladesh | 864 | 43 | 10 | 50 | 190 | 32 | 1 | 10 | - | - | 220 | 140 | 1 560 |
| Israel | 240 | 30 | - | 162 | 71 | 606 | 80 | 30 | 10 | - | 50 | 31 | 1 310 |
| Malaysia | 60 | - | - | 60 | 30 | 190 | 20 | - | 20 | 10 | 30 | 10 | 430 |
| Singapore | 70 | - | 11 | 20 | 30 | 223 | 10 | - | - | - | 20 | 20 | 404 |
| Philipines | 110 | 20 | 3 | 30 | 41 | 45 | - | 10 | - | - | 23 | - | 282 |
| Lebanon | 180 | 20 | - | - | 10 | 10 | 10 | - | - | - | - | 10 | 240 |
| Hong kong | 40 | 10 | - | 10 | 40 | 61 | 30 | - | - | - | 20 | - | 211 |
| Taiwan | 40 | - | - | - | 30 | 100 | 10 | - | - | - | 10 | - | 190 |
| Cyprus | 70 | - | - | 20 | 11 | 10 | 30 | 20 | - | - | 20 | - | 181 |
| Turkey | 20 | - | - | 10 | 10 | 81 | 10 | 1 | - | - | 10 | 20 | 162 |
| Thailand | 31 | - | 1 | - | 50 | 14 | - | - | - | 10 | 30 | - | 136 |
| Iran | 41 | - | 2 | 10 | 20 | 40 | - | - | - | - | 1 | - | 114 |
| Myanmar | 50 | - | - | - | 10 | - | - | - | 20 | - | 20 | - | 100 |
| Vietnam | - | - | - | 10 | - | 50 | - | 10 | 10 | - | - | - | 80 |
| Indonesia | 20 | - | - | - | - | 20 | - | - | 10 | - | 20 | - | 70 |
| Jordan | 10 | - | - | - | 20 | 10 | - | - | - | - | 10 | - | 50 |
| Other Asia | 70 | 10 | - | 20 | 50 | 70 | 10 | - | - | - | 30 | 20 | 280 |

Table 3: Total Arrivals by Nationality and purpose of entry - 2009 (cont'd)

| | P U R P O S E O F E N T R Y | | | | | | | | | | | | Total |
|-----------------------|-----------------------------|-------------------------|-----------------------|---------------|----------------|----------------|----------------|----------------|--------------|--------------|----------------|---------------|------------------|
| | Returning resident | Prospective resident | Seeking employment | Employment | Visitor | Holiday | Business | In-transit | Diplomat | Student | Other | Not Stated | |
| Oceania | 1 088 | 195 | 61 | 2 225 | 713 | 8 722 | 495 | 680 | 72 | 40 | 437 | 194 | 14 922 |
| Australia | 800 | 142 | 53 | 1 875 | 591 | 7 172 | 343 | 551 | 52 | 10 | 285 | 148 | 12 022 |
| New zealand | 278 | 53 | 8 | 350 | 112 | 1 540 | 142 | 129 | 10 | 30 | 152 | 46 | 2 850 |
| Other Oceania | 10 | - | - | - | 10 | 10 | 10 | - | 10 | - | - | - | 50 |
| Not Stated | 545 | 411 | 42 | 365 | 2 478 | 830 | 845 | 1 187 | 41 | 50 | 1 061 | 621 | 8 476 |
| Total Arrivals | 238 889 | 84 709 | 8 843 | 74 591 | 724 603 | 319 111 | 147 393 | 403 386 | 6 384 | 3 876 | 240 315 | 84 188 | 2 336 288 |
| | 10.23 | 3.63 | 0.38 | 3.19 | 31.02 | 13.66 | 6.31 | 17.27 | 0.27 | 0.17 | 10.29 | 3.60 | 100.00 |

Table 4: Total Arrivals by Country of Residence and Purpose of Entry - 2009

| | P U R P O S E O F E N T R Y | | | | | | | | | | | | Total |
|----------------------|-----------------------------|---------------|--------------|---------------|----------------|----------------|----------------|----------------|--------------|--------------|----------------|---------------|------------------|
| | Returning | Prospective | Seeking | Employment | Visitor | Holiday | Business | In-transit | Diplomat | Student | Other | Not Stated | |
| | resident | resident | employment | | | | | | | | | | |
| Africa | 234 003 | 79 321 | 7 690 | 45 751 | 699 889 | 205 821 | 139 406 | 386 557 | 5 607 | 3 111 | 228 135 | 76 601 | 2 111 892 |
| Zimbabwe | 13 540 | 37 409 | 2 077 | 10 807 | 452 435 | 60 228 | 44 962 | 68 565 | 1 312 | 670 | 120 734 | 26 608 | 839 347 |
| Republic of South Af | 12 687 | 24 790 | 4 212 | 18 659 | 179 063 | 113 450 | 75 292 | 175 351 | 1 768 | 770 | 48 871 | 31 518 | 686 431 |
| Botswana | 203 200 | 3 124 | 274 | 12 961 | 15 882 | 2 355 | 1 700 | 1 143 | 1 234 | 760 | 18 763 | 9 697 | 271 093 |
| Zambia | 2 588 | 6 611 | 451 | 1 295 | 31 405 | 19 327 | 11 280 | 54 375 | 460 | 310 | 26 051 | 4 236 | 158 389 |
| Namibia | 679 | 5 409 | 525 | 905 | 11 939 | 4 712 | 3 025 | 81 184 | 302 | 131 | 10 646 | 3 061 | 122 518 |
| Lesotho | 280 | 321 | 40 | 200 | 2 057 | 932 | 571 | 393 | 50 | 30 | 371 | 231 | 5 476 |
| Malawi | 250 | 420 | 20 | 70 | 1 854 | 650 | 313 | 1 050 | 20 | 90 | 471 | 190 | 5 398 |
| Swaziland | 110 | 271 | 10 | 240 | 1 027 | 890 | 811 | 1 362 | 10 | 90 | 282 | 251 | 5 354 |
| Mozambique | 91 | 260 | - | 100 | 1 282 | 691 | 322 | 751 | 100 | 30 | 511 | 120 | 4 258 |
| Tanzania | 76 | 203 | 30 | 60 | 625 | 482 | 233 | 1 061 | 30 | 30 | 220 | 173 | 3 223 |
| Kenya | 126 | 170 | 30 | 211 | 814 | 632 | 233 | 400 | 30 | 20 | 291 | 92 | 3 049 |
| Democratic Republic | 60 | 80 | 1 | 91 | 152 | 204 | 54 | 580 | 20 | 40 | 181 | 90 | 1 553 |
| Uganda | 40 | 150 | - | 31 | 490 | 200 | 92 | 101 | 10 | 40 | 70 | 102 | 1 326 |
| Angola | 10 | 10 | 10 | 20 | 80 | 203 | 41 | 181 | 41 | - | 120 | 31 | 747 |
| Mauritius | 61 | 10 | 10 | 40 | 202 | 160 | 86 | - | 20 | - | 91 | 41 | 721 |
| Nigeria | 94 | 51 | - | - | 151 | 90 | 40 | 10 | 40 | 30 | 121 | 20 | 647 |
| Ghana | 40 | 11 | - | 10 | 50 | 70 | 62 | - | 10 | 20 | 60 | 20 | 353 |
| Ethiopia | - | - | - | - | 80 | 111 | 30 | - | 20 | - | 30 | - | 271 |
| Egypt | 20 | - | - | - | 70 | 60 | 50 | - | 10 | - | 21 | 30 | 261 |
| Madagascar | - | - | - | 10 | - | 40 | - | 30 | 30 | - | 50 | - | 160 |
| Cameroon | - | 10 | - | - | 60 | 10 | 2 | - | - | 10 | 40 | 10 | 142 |
| Rwanda | - | 10 | - | - | 10 | 31 | 30 | - | - | - | 30 | 10 | 121 |
| Senegal | - | - | - | 21 | 1 | 40 | 31 | - | - | - | - | 20 | 113 |
| Tunisia | - | - | - | - | 10 | 40 | 30 | - | 10 | 10 | - | - | 100 |
| Sychelles | - | 1 | - | - | - | 31 | - | 10 | 20 | - | 20 | 10 | 92 |
| Libya | - | - | - | - | 40 | 20 | 20 | - | - | - | 10 | - | 90 |
| Sudan | 11 | - | - | - | - | - | 30 | - | - | - | - | 10 | 51 |
| Morocco | - | - | - | - | 10 | 20 | 10 | - | - | - | - | 10 | 50 |

Table 4: Total Arrivals by Country of Residence and Purpose of Entry - 2009 (cont'd)

| | P U R P O S E O F E N T R Y | | | | | | | | | | | | Total |
|--------------------|-----------------------------|-------------|------------|--------------|--------------|---------------|--------------|--------------|------------|------------|--------------|------------|---------------|
| | Returning | Prospective | Seeking | Employment | Visitor | Holiday | Business | In-transit | Diplomat | Student | Other | Not Stated | |
| | resident | resident | employment | | | | | | | | | | |
| Benin | - | - | - | - | 10 | - | 10 | - | - | - | 30 | - | 50 |
| Sierra leone | - | - | - | - | - | 10 | 20 | - | 10 | 10 | - | - | 50 |
| Reunion | 10 | - | - | - | 10 | 10 | - | 10 | - | - | - | - | 40 |
| Somalia | 20 | - | - | - | 10 | - | - | - | - | - | - | 10 | 40 |
| Other Africa | 10 | - | - | 20 | 70 | 122 | 26 | - | 50 | 20 | 50 | 10 | 378 |
| America | 413 | 824 | 272 | 7 070 | 2 336 | 25 658 | 1 295 | 1 566 | 262 | 282 | 1 118 | 567 | 41 663 |
| USA | 283 | 724 | 233 | 5 891 | 1 859 | 21 491 | 1 054 | 1 267 | 191 | 212 | 869 | 465 | 34 539 |
| Canada | 100 | 60 | 35 | 1 020 | 336 | 3 410 | 185 | 249 | 51 | 60 | 187 | 61 | 5 754 |
| Brazil | - | 20 | - | 32 | 41 | 240 | 23 | 20 | 10 | - | 10 | - | 396 |
| Argentina | 10 | - | - | 41 | 40 | 111 | 1 | 10 | - | - | 10 | 20 | 243 |
| Mexico | - | - | 4 | 22 | - | 130 | - | 10 | - | - | - | - | 166 |
| Cuba | - | - | - | 1 | 20 | 20 | 10 | 10 | 10 | - | 10 | - | 81 |
| Jamaica | - | 10 | - | 10 | - | 30 | 10 | - | - | - | 10 | 10 | 80 |
| Chile | - | - | - | 20 | - | 22 | 2 | - | - | 10 | - | 10 | 64 |
| Trinidad | 10 | - | - | 10 | 10 | 10 | 10 | - | - | - | 11 | - | 61 |
| Colombia | - | - | - | 10 | - | 30 | - | - | - | - | - | - | 40 |
| Peru | - | - | - | - | 10 | 30 | - | - | - | - | - | - | 40 |
| Bermuda | - | - | - | - | 10 | 11 | - | - | - | - | - | - | 21 |
| Belize | - | - | - | - | 10 | 11 | - | - | - | - | - | - | 21 |
| Guatemala | - | 10 | - | - | - | 10 | - | - | - | - | 1 | - | 21 |
| Venezuela | - | - | - | 1 | - | 20 | - | - | - | - | - | - | 21 |
| Dominican republic | - | - | - | 10 | - | 10 | - | - | - | - | - | - | 20 |
| Paraguay | 10 | - | - | - | - | 10 | - | - | - | - | - | - | 20 |
| Uruguay | - | - | - | - | - | 20 | - | - | - | - | - | - | 20 |
| Costa rica | - | - | - | - | - | 11 | - | - | - | - | - | 1 | 12 |
| Bahamas | - | - | - | - | - | 10 | - | - | - | - | - | - | 10 |
| Barbados | - | - | - | - | - | 10 | - | - | - | - | - | - | 10 |
| Ecuador | - | - | - | - | - | 10 | - | - | - | - | - | - | 10 |

Table 4: Total Arrivals by Country of Residence and Purpose of Entry - 2009 (cont'd)

| | P U R P O S E O F E N T R Y | | | | | | | | | | | | Total |
|------------------|-----------------------------|-------------------------|-----------------------|---------------|--------------|---------------|--------------|--------------|------------|------------|--------------|--------------|----------------|
| | Returning resident | Prospective resident | Seeking employment | Employment | Visitor | Holiday | Business | In-transit | Diplomat | Student | Other | Not Stated | |
| Panama | - | - | - | 2 | - | - | - | - | - | - | - | - | 2 |
| Suriname | - | - | - | - | - | 1 | - | - | - | - | - | - | 1 |
| Other America | 10 | 10 | - | 13 | 20 | 134 | - | - | - | - | 11 | 1 | 199 |
| Europe | 1 315 | 1 292 | 557 | 16 372 | 6 350 | 64 742 | 3 400 | 8 150 | 181 | 292 | 2 408 | 2 167 | 107 226 |
| United Kingdom | 745 | 494 | 125 | 2 641 | 2 982 | 17 184 | 1 526 | 1 543 | 32 | 61 | 546 | 454 | 28 333 |
| Germany | 155 | 311 | 204 | 4 199 | 776 | 13 099 | 272 | 2 832 | 42 | 60 | 520 | 434 | 22 904 |
| Netherlands | 91 | 61 | 22 | 2 464 | 527 | 7 446 | 203 | 699 | 10 | - | 304 | 329 | 12 156 |
| France | 41 | 60 | 21 | 1 473 | 438 | 5 223 | 390 | 382 | 41 | 10 | 197 | 203 | 8 479 |
| Italy | 41 | 51 | 23 | 817 | 127 | 3 816 | 62 | 368 | - | - | 64 | 117 | 5 486 |
| Spain | - | 10 | 1 | 715 | 141 | 3 545 | 72 | 285 | 1 | - | 81 | 42 | 4 893 |
| Switzerland | 22 | 73 | 45 | 865 | 144 | 2 861 | 95 | 457 | 3 | 10 | 85 | 98 | 4 758 |
| Belgiumluxenburg | 40 | 21 | 10 | 563 | 162 | 1 995 | 94 | 222 | 20 | 10 | 56 | 71 | 3 264 |
| Denmark | 1 | 10 | 1 | 372 | 80 | 1 284 | 60 | 290 | - | - | 72 | 41 | 2 211 |
| Austria | 22 | - | 41 | 473 | 92 | 1 233 | 13 | 210 | - | - | 42 | 32 | 2 158 |
| Sweden | 11 | 30 | 10 | 392 | 131 | 1 032 | 121 | 181 | - | 50 | 102 | 51 | 2 111 |
| Norway | 20 | 40 | 13 | 232 | 91 | 1 136 | 70 | 30 | - | 51 | 80 | 20 | 1 783 |
| Ireland | 46 | 30 | 10 | 171 | 111 | 1 130 | 111 | 80 | 11 | 10 | 50 | 11 | 1 771 |
| Russia | 10 | 20 | 10 | 285 | 160 | 840 | 70 | 130 | 21 | - | 65 | 68 | 1 679 |
| Portugal | 10 | 20 | - | 121 | 124 | 566 | 110 | 161 | - | - | 43 | 80 | 1 235 |
| Poland | 20 | 10 | - | 150 | 90 | 399 | - | 70 | - | - | 30 | 12 | 781 |
| Finland | - | 30 | 20 | 91 | 2 | 425 | 11 | 40 | - | 30 | 10 | - | 659 |
| Czechoslovakia | 10 | 1 | - | 133 | 11 | 295 | - | 50 | - | - | 10 | 41 | 551 |
| Hungary | - | - | - | 21 | 50 | 191 | 10 | 50 | - | - | 10 | 21 | 353 |
| Romania | - | - | 1 | 40 | - | 182 | - | 20 | - | - | 10 | 11 | 264 |
| Greece | - | 10 | - | 32 | 20 | 126 | 10 | 20 | - | - | 11 | - | 229 |
| Slovakia | - | - | - | 10 | 20 | 100 | - | 10 | - | - | 20 | 10 | 170 |
| Ukraine | 10 | - | - | 20 | - | 112 | 10 | 10 | - | - | - | 1 | 163 |
| Luxembourg | - | - | - | 30 | 10 | 80 | 20 | - | - | - | - | 10 | 150 |

Table 4: Total Arrivals by Country of Residence and Purpose of Entry - 2009 (cont'd)

| | P U R P O S E O F E N T R Y | | | | | | | | | | | | Total |
|--------------|-----------------------------|-------------|------------|--------------|--------------|---------------|--------------|------------|------------|-----------|--------------|------------|---------------|
| | Returning | Prospective | Seeking | | Visitor | Holiday | Business | In-transit | Diplomat | Student | Other | Not Stated | |
| | resident | resident | employment | Employment | | | | | | | | | |
| Croatia | - | - | - | - | 10 | 90 | 10 | - | - | - | - | - | 110 |
| Bulgaria | 10 | 10 | - | 10 | 21 | 40 | - | - | - | - | - | - | 91 |
| Latvia | - | - | - | - | - | 50 | - | - | - | - | - | - | 50 |
| Lithuania | - | - | - | 10 | - | 20 | 10 | - | - | - | - | - | 40 |
| Yugoslavia | 10 | - | - | 10 | - | 20 | - | - | - | - | - | - | 40 |
| Other Europe | - | - | - | 32 | 30 | 222 | 50 | 10 | - | - | - | 10 | 354 |
| Asia | 1 591 | 566 | 76 | 1 767 | 2 756 | 10 262 | 1 163 | 242 | 170 | 30 | 1 289 | 796 | 20 708 |
| Japan | - | 30 | 11 | 593 | 160 | 5 870 | 91 | 60 | 20 | - | 71 | 80 | 6 986 |
| India | 1 097 | 252 | 30 | 254 | 919 | 698 | 252 | 30 | 50 | 20 | 453 | 238 | 4 293 |
| China | 271 | 140 | 10 | 404 | 850 | 966 | 530 | 20 | 80 | - | 375 | 331 | 3 977 |
| Korea | 10 | 10 | - | 70 | 80 | 900 | 30 | 40 | - | - | 20 | - | 1 160 |
| Israel | 10 | 20 | - | 121 | 52 | 536 | 80 | 30 | - | - | 50 | 2 | 901 |
| Pakistan | 71 | 40 | - | 20 | 202 | 33 | 30 | - | - | - | 45 | 35 | 476 |
| Malaysia | 20 | - | - | 60 | 40 | 200 | 20 | - | 10 | - | 60 | 10 | 420 |
| Singapore | - | 10 | 11 | 13 | 41 | 286 | 10 | - | - | - | 20 | 10 | 401 |
| Sri lanka | 51 | - | - | 60 | 60 | 90 | - | 10 | - | - | 30 | 10 | 311 |
| Bangladesh | 31 | 3 | - | 30 | 70 | 2 | - | 10 | - | - | 110 | 50 | 306 |
| Hong kong | 10 | 10 | 10 | 31 | 40 | 138 | 20 | 10 | - | - | 10 | - | 279 |
| Turkey | - | - | - | 20 | - | 103 | 10 | 12 | - | - | 10 | 20 | 175 |
| Philipines | 10 | 20 | 3 | 20 | 51 | 17 | - | - | - | - | 4 | - | 125 |
| Taiwan | - | - | - | - | 20 | 80 | 10 | - | - | - | - | - | 110 |
| Thailand | - | - | 1 | - | 50 | 14 | - | 10 | - | 10 | 10 | - | 95 |
| Lebanon | - | 20 | - | - | 10 | 30 | 10 | - | - | - | - | 10 | 80 |
| Cyprus | 10 | - | - | 20 | 11 | - | 20 | 10 | - | - | - | - | 71 |
| Iran | - | - | - | - | 20 | 50 | - | - | - | - | 1 | - | 71 |
| Vietnam | - | - | - | 10 | - | 32 | 10 | - | - | - | - | - | 52 |
| Indonesia | - | 1 | - | - | 20 | 10 | - | - | 10 | - | - | - | 41 |
| Jordan | - | - | - | - | 20 | 10 | - | - | - | - | 10 | - | 40 |

Table 4: Total Arrivals by Country of Residence and Purpose of Entry - 2009 (cont'd)

| | P U R P O S E O F E N T R Y | | | | | | | | | | | | Total |
|----------------------|-----------------------------|-------------------------|-----------------------|---------------|----------------|----------------|----------------|----------------|--------------|--------------|----------------|---------------|------------------|
| | Returning resident | Prospective resident | Seeking employment | Employment | Visitor | Holiday | Business | In-transit | Diplomat | Student | Other | Not Stated | |
| Saudi arabia | - | - | - | 20 | - | 10 | 10 | - | - | - | - | - | 40 |
| Other Asia | - | 10 | - | 21 | 40 | 187 | 30 | - | - | - | 10 | - | 298 |
| Oceania | 102 | 245 | 45 | 2 199 | 716 | 8 232 | 410 | 593 | 51 | 30 | 306 | 158 | 13 087 |
| Australia | 72 | 192 | 42 | 1 866 | 583 | 7 005 | 340 | 506 | 41 | 10 | 246 | 116 | 11 019 |
| New zealand | 30 | 53 | 3 | 333 | 133 | 1 227 | 60 | 87 | 10 | 20 | 60 | 42 | 2 058 |
| Fiji | - | - | - | - | - | - | 10 | - | - | - | - | - | 10 |
| Not Stated | 1 465 | 2 461 | 203 | 1 432 | 12 556 | 4 396 | 1 719 | 6 278 | 113 | 131 | 7 059 | 3 899 | 41 712 |
| Tota Arrivals | 238 889 | 84 709 | 8 843 | 74 591 | 724 603 | 319 111 | 147 393 | 403 386 | 6 384 | 3 876 | 240 315 | 84 188 | 2 336 288 |

Table 5: Total Arrivals by Purpose of Entry and Age-group - 2009

| | AGE GROUP | | | | | | | | | | | | | Not | Total | |
|-------------------------|--------------|--------------|--------------|---------------|----------------|----------------|----------------|----------------|----------------|----------------|----------------|----------------|---------------|---------------|--------------|------------------|
| | 0-4 | 5-9 | 10-14 | 15-19 | 20-24 | 25-29 | 30-34 | 35-39 | 40-44 | 45-49 | 50-54 | 55-59 | 60-64 | 65+ | | Stated |
| Purpose of entry | | | | | | | | | | | | | | | | |
| Visitor | 1 502 | 963 | 2 068 | 13 658 | 75 369 | 152 527 | 135 937 | 113 262 | 76 975 | 49 993 | 38 769 | 25 790 | 16 250 | 19 228 | 2 312 | 724 603 |
| Intransit | 574 | 382 | 971 | 10 326 | 33 747 | 56 412 | 63 985 | 65 514 | 55 473 | 41 383 | 30 475 | 20 082 | 10 970 | 11 749 | 1 343 | 403 386 |
| Holiday | 389 | 248 | 754 | 8 294 | 23 817 | 40 177 | 42 332 | 39 131 | 33 969 | 31 439 | 27 776 | 24 186 | 20 541 | 25 383 | 675 | 319 111 |
| Other | 405 | 340 | 601 | 4 839 | 24 391 | 46 313 | 44 063 | 37 874 | 26 300 | 19 008 | 14 570 | 9 297 | 5 803 | 5 882 | 629 | 240 315 |
| Return resident | 157 | 248 | 1 045 | 5 741 | 9 613 | 23 702 | 37 640 | 43 645 | 37 814 | 27 728 | 21 793 | 14 586 | 8 381 | 6 230 | 566 | 238 889 |
| Business | 148 | 80 | 173 | 1 183 | 8 567 | 22 363 | 25 327 | 25 692 | 20 056 | 14 796 | 12 851 | 8 279 | 4 686 | 2 888 | 304 | 147 393 |
| Prosp. resident | 255 | 274 | 379 | 2 025 | 9 276 | 15 994 | 14 629 | 12 284 | 9 127 | 6 761 | 5 048 | 3 650 | 2 206 | 2 556 | 245 | 84 709 |
| Employment | 64 | 75 | 274 | 2 026 | 4 806 | 8 395 | 9 840 | 8 797 | 8 421 | 7 432 | 7 408 | 5 971 | 4 757 | 6 095 | 230 | 74 591 |
| Seek employment | 31 | 21 | 41 | 288 | 741 | 1 212 | 1 099 | 1 251 | 1 029 | 761 | 704 | 647 | 445 | 543 | 30 | 8 843 |
| Diplomat | 31 | 10 | 20 | 72 | 469 | 783 | 825 | 798 | 937 | 771 | 722 | 508 | 136 | 242 | 60 | 6 384 |
| Student | - | 10 | 40 | 562 | 1 216 | 602 | 391 | 234 | 375 | 204 | 81 | 80 | 60 | 11 | 10 | 3 876 |
| Not Stated | 195 | 137 | 287 | 1 497 | 6 249 | 12 556 | 13 364 | 13 165 | 10 434 | 8 038 | 7 000 | 4 680 | 2 956 | 3 222 | 408 | 84 188 |
| Total | 3 751 | 2 788 | 6 653 | 50 511 | 198 261 | 381 036 | 389 432 | 361 647 | 280 910 | 208 314 | 167 197 | 117 756 | 77 191 | 84 029 | 6 812 | 2 336 288 |
| | 0.16 | 0.12 | 0.28 | 2.16 | 8.49 | 16.31 | 16.67 | 15.48 | 12.02 | 8.92 | 7.16 | 5.04 | 3.30 | 3.60 | 0.29 | 100.00 |

Table 6: Total Arrivals by Country of Residence and Age-Group- 2009

| | AGEGROUP | | | | | | | | | | | | | | Not Stated | Total |
|---------------|--------------|--------------|--------------|---------------|----------------|----------------|----------------|----------------|----------------|----------------|----------------|---------------|---------------|---------------|--------------|------------------|
| | 0-4 | 5-9 | 10-14 | 15-19 | 20-24 | 25-29 | 30-34 | 35-39 | 40-44 | 45-49 | 50-54 | 55-59 | 60-64 | 65+ | | |
| Africa | 3 447 | 2 530 | 5 692 | 43 768 | 180 542 | 356 331 | 364 403 | 341 005 | 261 105 | 188 122 | 146 517 | 98 641 | 57 324 | 56 174 | 6 291 | 2 111 892 |
| Zimbabwe | 1 140 | 821 | 1 365 | 13 696 | 93 993 | 202 114 | 177 764 | 142 226 | 84 659 | 46 638 | 32 939 | 19 543 | 10 045 | 9 892 | 2 512 | 839 347 |
| South Africa | 1 736 | 1 202 | 2 358 | 16 495 | 44 143 | 70 841 | 85 125 | 97 039 | 94 803 | 82 061 | 70 161 | 51 682 | 32 436 | 34 124 | 2 225 | 686 431 |
| Botswana | 229 | 243 | 1 096 | 6 028 | 10 179 | 26 591 | 43 833 | 51 215 | 44 223 | 30 684 | 24 772 | 16 042 | 8 812 | 6 547 | 599 | 271 093 |
| Zambia | 150 | 80 | 240 | 2 233 | 15 963 | 33 680 | 34 974 | 28 376 | 17 110 | 11 871 | 6 380 | 3 434 | 1 984 | 1 503 | 411 | 158 389 |
| Namibia | 172 | 144 | 493 | 4 595 | 13 796 | 18 011 | 16 436 | 17 079 | 16 046 | 13 132 | 9 412 | 6 030 | 3 175 | 3 613 | 384 | 122 518 |
| Lesotho | - | 10 | 40 | 201 | 500 | 791 | 965 | 742 | 701 | 554 | 420 | 301 | 120 | 121 | 10 | 5 476 |
| Malawi | - | 10 | 10 | 70 | 490 | 673 | 1 100 | 800 | 690 | 731 | 362 | 271 | 111 | 70 | 10 | 5 398 |
| Swaziland | - | - | 10 | 100 | 351 | 924 | 773 | 1 001 | 780 | 530 | 383 | 211 | 170 | 61 | 60 | 5 354 |
| Mozambique | 10 | - | 10 | 70 | 330 | 931 | 742 | 602 | 431 | 482 | 242 | 187 | 100 | 81 | 40 | 4 258 |
| Tanzania | - | - | 40 | 130 | 210 | 493 | 731 | 417 | 330 | 270 | 331 | 208 | 53 | 10 | - | 3 223 |
| Kenya | - | 20 | - | 60 | 224 | 370 | 545 | 522 | 491 | 359 | 222 | 152 | 23 | 41 | 20 | 3 049 |
| DRC | - | - | 10 | - | 40 | 211 | 332 | 261 | 182 | 201 | 144 | 61 | 71 | 30 | 10 | 1 553 |
| Uganda | - | - | - | 10 | 140 | 330 | 331 | 152 | 91 | 90 | 70 | 50 | 41 | 11 | 10 | 1 326 |
| Angola | - | - | - | 20 | 30 | 90 | 130 | 73 | 100 | 81 | 81 | 121 | 11 | 10 | - | 747 |
| Mauritius | - | - | 10 | 30 | 32 | 30 | 140 | 90 | 85 | 82 | 140 | 61 | 11 | 10 | - | 721 |
| Nigeria | - | - | - | - | 20 | 31 | 90 | 100 | 121 | 81 | 82 | 72 | 50 | - | - | 647 |
| Ghana | - | - | - | 10 | - | 20 | 60 | 10 | 50 | 61 | 61 | 50 | 31 | - | - | 353 |
| Ethiopia | - | - | - | - | 40 | 20 | 30 | 50 | 30 | 31 | 40 | 30 | - | - | - | 271 |
| Egypt | - | - | - | - | 20 | 70 | 70 | 40 | 1 | 20 | 10 | 10 | 10 | 10 | - | 261 |
| Madagascar | - | - | - | 20 | - | 40 | 20 | - | - | 10 | 40 | 10 | 20 | - | - | 160 |
| Cameroon | - | - | - | - | 10 | - | 20 | 20 | 10 | 21 | 30 | 11 | 10 | 10 | - | 142 |
| Rwanda | - | - | - | - | - | 30 | 40 | - | 10 | 21 | - | 10 | 10 | - | - | 121 |
| Senegal | 10 | - | - | - | - | 10 | 20 | 30 | - | 1 | 32 | - | 10 | - | - | 113 |
| Tunisia | - | - | - | - | 10 | 10 | 10 | 20 | 10 | - | 40 | - | - | - | - | 100 |
| Sychelles | - | - | - | - | 1 | - | 30 | 20 | 10 | 20 | 11 | - | - | - | - | 92 |
| Libya | - | - | 10 | - | - | - | 30 | 40 | - | - | - | 10 | - | - | - | 90 |
| Sudan | - | - | - | - | - | - | 10 | 10 | 21 | - | 10 | - | - | - | - | 51 |
| Morocco | - | - | - | - | - | 10 | 10 | - | 10 | - | 10 | 10 | - | - | - | 50 |
| Benin | - | - | - | - | - | - | - | - | 10 | - | 10 | 30 | - | - | - | 50 |

Table 6: Total Arrivals by Country of Residence and Age-Group- 2009 (cont'd)

| | AGEGROUP | | | | | | | | | | | | | | Not Stated | Total |
|----------------|-----------|-----------|------------|--------------|--------------|--------------|---------------|--------------|--------------|---------------|---------------|---------------|--------------|---------------|------------|----------------|
| | 0-4 | 5-9 | 10-14 | 15-19 | 20-24 | 25-29 | 30-34 | 35-39 | 40-44 | 45-49 | 50-54 | 55-59 | 60-64 | 65+ | | |
| Sierra leone | - | - | - | - | - | - | - | 10 | 20 | - | 10 | 10 | - | - | - | 50 |
| Other Africa | - | - | - | - | 20 | 10 | 42 | 60 | 80 | 90 | 72 | 34 | 20 | 30 | - | 458 |
| America | 95 | 39 | 160 | 1 658 | 3 473 | 3 492 | 3 142 | 2 451 | 2 431 | 2 794 | 3 413 | 4 326 | 5 200 | 8 910 | 79 | 41 663 |
| USA | 93 | 39 | 148 | 1 350 | 2 711 | 2 681 | 2 388 | 1 900 | 2 044 | 2 285 | 2 794 | 3 605 | 4 447 | 7 995 | 59 | 34 539 |
| Canada | 2 | - | 12 | 254 | 597 | 678 | 532 | 355 | 303 | 443 | 473 | 596 | 678 | 811 | 20 | 5 754 |
| Brazil | - | - | - | 21 | 30 | 41 | 61 | 82 | 10 | 20 | 44 | 23 | 33 | 31 | - | 396 |
| Argentina | - | - | - | 10 | 30 | 30 | 60 | 72 | - | - | - | 30 | 10 | 1 | - | 243 |
| Mexico | - | - | - | 3 | 42 | 20 | 21 | 1 | 13 | 3 | 31 | 1 | 10 | 21 | - | 166 |
| Cuba | - | - | - | - | - | - | 30 | 20 | - | 11 | - | 10 | - | 10 | - | 81 |
| Jamaica | - | - | - | - | - | - | 20 | 10 | 10 | 20 | - | 20 | - | - | - | 80 |
| Chile | - | - | - | - | 11 | 21 | - | - | - | 2 | 20 | 10 | - | - | - | 64 |
| Trinidad | - | - | - | - | 10 | 10 | - | 1 | 10 | - | 20 | 10 | - | - | - | 61 |
| Colombia | - | - | - | - | 30 | - | - | - | - | - | 10 | - | - | - | - | 40 |
| Peru | - | - | - | - | 10 | - | - | - | 10 | - | - | - | 10 | 10 | - | 40 |
| Other America | - | - | - | 20 | 2 | 11 | 30 | 10 | 31 | 10 | 21 | 21 | 12 | 31 | - | 199 |
| Europe | 80 | 54 | 491 | 3 451 | 7 983 | 9 783 | 11 422 | 9 030 | 9 822 | 10 630 | 11 642 | 10 137 | 9 846 | 12 715 | 140 | 107 226 |
| UK | 20 | 10 | 62 | 1 403 | 2 768 | 2 910 | 3 075 | 2 121 | 2 336 | 2 326 | 2 651 | 2 303 | 2 999 | 3 328 | 21 | 28 333 |
| Germany | 10 | 10 | 85 | 374 | 1 279 | 1 448 | 1 904 | 1 648 | 2 303 | 2 600 | 2 726 | 2 461 | 2 007 | 4 028 | 21 | 22 904 |
| Netherlands | 20 | 10 | 111 | 345 | 1 045 | 1 545 | 1 193 | 827 | 791 | 1 088 | 1 195 | 1 460 | 1 180 | 1 295 | 51 | 12 156 |
| France | - | 1 | 44 | 320 | 530 | 586 | 709 | 755 | 943 | 1 016 | 839 | 846 | 999 | 881 | 10 | 8 479 |
| Italy | 10 | 2 | 12 | 146 | 78 | 468 | 895 | 778 | 653 | 632 | 628 | 426 | 302 | 444 | 12 | 5 486 |
| Spain | 10 | 10 | 20 | 63 | 153 | 402 | 963 | 721 | 602 | 516 | 519 | 388 | 272 | 234 | 20 | 4 893 |
| Switzerland | - | - | 13 | 168 | 337 | 450 | 424 | 448 | 437 | 369 | 534 | 485 | 445 | 648 | - | 4 758 |
| Belgium | - | - | 10 | 135 | 234 | 255 | 311 | 243 | 340 | 420 | 463 | 326 | 248 | 277 | 2 | 3 264 |
| Denmark | - | - | 30 | 60 | 234 | 191 | 200 | 131 | 101 | 173 | 273 | 210 | 263 | 345 | - | 2 211 |
| Austria | - | - | 31 | 40 | 80 | 192 | 207 | 145 | 159 | 217 | 332 | 247 | 210 | 298 | - | 2 158 |
| Sweden | - | 1 | 31 | 81 | 319 | 222 | 145 | 174 | 136 | 154 | 212 | 152 | 236 | 247 | 1 | 2 111 |
| Norway | - | - | 10 | 30 | 402 | 222 | 210 | 110 | 121 | 126 | 121 | 151 | 120 | 160 | - | 1 783 |

Table 6: Total Arrivals by Country of Residence and Age-Group- 2009 (cont'd)

| | AGEGROUP | | | | | | | | | | | | | Not Stated | Total | |
|--------------|-----------|-----------|-----------|------------|--------------|--------------|--------------|--------------|--------------|--------------|--------------|--------------|--------------|--------------|-----------|---------------|
| | 0-4 | 5-9 | 10-14 | 15-19 | 20-24 | 25-29 | 30-34 | 35-39 | 40-44 | 45-49 | 50-54 | 55-59 | 60-64 | | | 65+ |
| Ireland | - | - | - | 161 | 160 | 366 | 177 | 114 | 184 | 172 | 150 | 54 | 121 | 112 | - | 1 771 |
| Russia | - | - | 1 | 11 | 81 | 122 | 309 | 210 | 158 | 336 | 245 | 73 | 21 | 111 | 1 | 1 679 |
| Portugal | - | 10 | - | 23 | 81 | 61 | 154 | 105 | 103 | 167 | 275 | 142 | 60 | 54 | - | 1 235 |
| Poland | - | - | - | 20 | 12 | 50 | 121 | 92 | 110 | 32 | 103 | 141 | 50 | 50 | - | 781 |
| Finland | - | - | 1 | 20 | 90 | 41 | 110 | 21 | 31 | 22 | 82 | 100 | 121 | 20 | - | 659 |
| Czechoslov | 10 | - | 10 | - | 10 | 60 | 73 | 52 | 71 | 71 | 52 | 20 | 91 | 31 | - | 551 |
| Hungary | - | - | - | - | 10 | 40 | 61 | 61 | 40 | 60 | 20 | 20 | 10 | 31 | - | 353 |
| Romania | - | - | - | - | - | - | 51 | 52 | 51 | 20 | 40 | 30 | 20 | - | - | 264 |
| Greece | - | - | - | 1 | 10 | 10 | 10 | 21 | 51 | 2 | 31 | 31 | 30 | 31 | 1 | 229 |
| Slovakia | - | - | 20 | 10 | 20 | 10 | 10 | 20 | 10 | - | 20 | 10 | 20 | 20 | - | 170 |
| Ukraine | - | - | - | - | - | - | 10 | 70 | 11 | 61 | 1 | - | - | 10 | - | 163 |
| Luxembourg | - | - | - | 40 | - | 20 | 10 | 20 | - | 10 | 30 | 10 | - | 10 | - | 150 |
| Croatia | - | - | - | - | 10 | 60 | 10 | - | - | 10 | 10 | 10 | - | - | - | 110 |
| Bulgaria | - | - | - | - | 10 | 10 | 10 | 20 | 30 | - | 10 | - | 1 | - | - | 91 |
| Latvia | - | - | - | - | - | - | - | - | 10 | 20 | - | 10 | - | 10 | - | 50 |
| Lithuania | - | - | - | - | - | - | - | - | 10 | - | 20 | - | - | 10 | - | 40 |
| Yugoslavia | - | - | - | - | - | - | - | 10 | 10 | - | 10 | - | 10 | - | - | 40 |
| Other Europe | - | - | - | - | 30 | 42 | 70 | 61 | 20 | 10 | 50 | 31 | 10 | 30 | - | 354 |
| Asia | 20 | 20 | 60 | 420 | 1 346 | 2 596 | 2 451 | 2 147 | 1 883 | 1 796 | 1 382 | 1 597 | 1 912 | 3 018 | 60 | 20 708 |
| Japan | 20 | - | 10 | 91 | 301 | 561 | 561 | 421 | 382 | 283 | 292 | 633 | 1 050 | 2 371 | 10 | 6 986 |
| India | - | 10 | 10 | 111 | 248 | 686 | 703 | 511 | 368 | 502 | 306 | 363 | 242 | 213 | 20 | 4 293 |
| China | - | 10 | 20 | 83 | 481 | 710 | 522 | 634 | 575 | 421 | 200 | 150 | 111 | 50 | 10 | 3 977 |
| Korea | - | - | 10 | 20 | 30 | 110 | 130 | 80 | 70 | 130 | 190 | 130 | 200 | 60 | - | 1 160 |
| Israel | - | - | 10 | 21 | 72 | 131 | 40 | 121 | 71 | 100 | 73 | 80 | 92 | 80 | 10 | 901 |
| Pakistan | - | - | - | - | 92 | 52 | 85 | 52 | 90 | 20 | 1 | 34 | 30 | 20 | - | 476 |
| Malaysia | - | - | - | - | 20 | 80 | 40 | - | 30 | 80 | 30 | 80 | 40 | 20 | - | 420 |
| Singapore | - | - | - | 43 | 20 | - | 32 | 50 | 91 | 72 | 53 | 10 | 10 | 20 | - | 401 |
| Sri lanka | - | - | - | - | 20 | 20 | 50 | 30 | 40 | 20 | 51 | 10 | 20 | 50 | - | 311 |
| Bangladesh | - | - | - | 1 | 1 | 101 | 100 | 40 | 10 | 30 | 10 | 1 | 1 | 11 | - | 306 |

Table 6: Total Arrivals by Country of Residence and Age-Group- 2009 (cont'd)

| | AGEGROUP | | | | | | | | | | | | | Not | | Total |
|----------------------|--------------|--------------|--------------|---------------|----------------|----------------|----------------|----------------|----------------|----------------|----------------|----------------|---------------|---------------|--------------|------------------|
| | 0-4 | 5-9 | 10-14 | 15-19 | 20-24 | 25-29 | 30-34 | 35-39 | 40-44 | 45-49 | 50-54 | 55-59 | 60-64 | 65+ | Stated | |
| Hong kong | - | - | - | - | 10 | 21 | 13 | 21 | 30 | 34 | 60 | 30 | 30 | 30 | - | 279 |
| Turkey | - | - | - | - | 10 | 20 | 31 | 42 | 20 | 21 | 10 | 10 | 10 | 1 | - | 175 |
| Philippines | - | - | - | 10 | 11 | 11 | 24 | 3 | 20 | - | 22 | 2 | 2 | 10 | 10 | 125 |
| Taiwan | - | - | - | 10 | - | 10 | 20 | 10 | - | 20 | 10 | 10 | 10 | 10 | - | 110 |
| Thailand | - | - | - | 10 | - | 11 | 20 | 20 | 3 | 13 | 2 | 2 | 13 | 1 | - | 95 |
| Lebanon | - | - | - | - | 10 | 30 | 10 | 20 | 10 | - | - | - | - | - | - | 80 |
| Cyprus | - | - | - | - | - | - | - | - | 10 | 10 | 1 | 10 | 10 | 30 | - | 71 |
| Iran | - | - | - | 10 | 10 | 10 | - | 10 | 1 | 10 | - | - | - | 20 | - | 71 |
| Vietnam | - | - | - | 10 | - | - | - | 1 | 11 | 20 | - | 10 | - | - | - | 52 |
| Indonesia | - | - | - | - | - | - | 10 | 21 | - | - | - | 10 | - | - | - | 41 |
| Jordan | - | - | - | - | 10 | 10 | - | - | 10 | - | 10 | - | - | - | - | 40 |
| Saudi arabia | - | - | - | - | - | 10 | - | - | 10 | - | 10 | - | 10 | - | - | 40 |
| Kazakhstan | - | - | - | - | - | - | - | - | - | - | - | 10 | 10 | - | - | 20 |
| Other Asia | - | - | - | - | - | 12 | 60 | 60 | 31 | 10 | 51 | 22 | 31 | 21 | - | 298 |
| Oceania | 12 | 10 | 41 | 425 | 1 128 | 2 189 | 1 461 | 926 | 841 | 942 | 1 146 | 1 119 | 1 355 | 1 471 | 21 | 13 087 |
| Australia | 12 | - | 41 | 403 | 895 | 1 809 | 1 232 | 795 | 715 | 786 | 852 | 1 020 | 1 172 | 1 266 | 21 | 11 019 |
| New zealand | - | 10 | - | 22 | 233 | 380 | 229 | 131 | 126 | 146 | 294 | 99 | 183 | 205 | - | 2 058 |
| Fiji | - | - | - | - | - | - | - | - | - | 10 | - | - | - | - | - | 10 |
| Not Stated | 97 | 135 | 209 | 789 | 3 789 | 6 645 | 6 553 | 6 088 | 4 828 | 4 030 | 3 097 | 1 936 | 1 554 | 1 741 | 221 | 41 712 |
| TotalArrivals | 3 751 | 2 788 | 6 653 | 50 511 | 198 261 | 381 036 | 389 432 | 361 647 | 280 910 | 208 314 | 167 197 | 117 756 | 77 191 | 84 029 | 6 812 | 2 336 288 |

Table7: Total Arrivals by Nationality and Age-Group- 2009

| | AGEGROUP | | | | | | | | | | | | | | Not Stated | Total |
|---------------|--------------|--------------|--------------|---------------|----------------|----------------|----------------|----------------|----------------|----------------|----------------|---------------|---------------|---------------|--------------|------------------|
| | 0-4 | 5-9 | 10-14 | 15-19 | 20-24 | 25-29 | 30-34 | 35-39 | 40-44 | 45-49 | 50-54 | 55-59 | 60-64 | 65+ | | |
| Africa | 3 415 | 2 613 | 5 595 | 42 784 | 180 162 | 356 092 | 362 287 | 338 044 | 256 957 | 183 063 | 140 964 | 93 683 | 52 731 | 51 590 | 6 316 | 2 076 296 |
| Zimbabwe | 1 211 | 930 | 1 649 | 15 537 | 100 549 | 221 606 | 209 304 | 178 412 | 111 548 | 60 816 | 43 374 | 24 613 | 11 281 | 9 564 | 2 905 | 993 299 |
| South Africa | 1 821 | 1 409 | 2 921 | 18 292 | 45 141 | 73 912 | 88 627 | 101 714 | 101 458 | 88 384 | 75 307 | 56 014 | 34 760 | 36 369 | 2 334 | 728 463 |
| Zambia | 161 | 80 | 330 | 2 933 | 16 744 | 35 253 | 37 965 | 31 308 | 19 790 | 14 382 | 7 848 | 3 968 | 2 044 | 1 471 | 471 | 174 748 |
| Namibia | 172 | 143 | 504 | 4 662 | 13 685 | 17 548 | 15 838 | 16 500 | 15 382 | 12 671 | 9 173 | 5 822 | 2 982 | 3 397 | 386 | 118 865 |
| Malawi | - | 20 | 20 | 250 | 960 | 1 752 | 2 291 | 2 601 | 1 804 | 1 452 | 1 072 | 392 | 240 | 190 | 10 | 13 054 |
| Lesotho | - | - | 40 | 220 | 530 | 931 | 1 143 | 1 104 | 1 031 | 704 | 463 | 511 | 150 | 152 | 20 | 6 999 |
| Kenya | - | 10 | 20 | 230 | 473 | 592 | 1 194 | 1 387 | 1 171 | 756 | 502 | 262 | 91 | 51 | 50 | 6 789 |
| Mozambique | 20 | - | 20 | 90 | 521 | 1 233 | 1 243 | 922 | 741 | 791 | 363 | 275 | 140 | 81 | 40 | 6 480 |
| Swaziland | - | 10 | 10 | 70 | 410 | 1 013 | 963 | 1 090 | 911 | 530 | 386 | 211 | 180 | 71 | 50 | 5 905 |
| Tanzania | - | 1 | 40 | 150 | 400 | 653 | 1 042 | 840 | 520 | 391 | 691 | 395 | 154 | 40 | - | 5 317 |
| Nigeria | - | 10 | 10 | 110 | 60 | 193 | 542 | 530 | 541 | 432 | 412 | 201 | 110 | 30 | 10 | 3 191 |
| Uganda | 10 | - | 10 | 30 | 260 | 500 | 602 | 253 | 281 | 241 | 100 | 160 | 101 | 32 | 10 | 2 590 |
| DRC | - | - | - | 10 | 71 | 282 | 521 | 361 | 404 | 353 | 174 | 121 | 41 | 20 | 10 | 2 368 |
| Mauritius | - | - | 10 | 110 | 73 | 92 | 200 | 190 | 212 | 214 | 210 | 171 | 51 | 10 | - | 1 543 |
| Ghana | - | - | - | - | 30 | 92 | 140 | 80 | 122 | 181 | 151 | 160 | 164 | 12 | 10 | 1 142 |
| Angola | - | - | - | 30 | 80 | 70 | 130 | 72 | 150 | 120 | 90 | 60 | 31 | 10 | 10 | 853 |
| Ethiopia | - | - | - | 20 | 40 | 70 | 90 | 130 | 240 | 63 | 51 | 50 | 61 | 10 | - | 825 |
| Egypt | 10 | - | 1 | 10 | 50 | 100 | 111 | 80 | 91 | 30 | 31 | 10 | 40 | 10 | - | 574 |
| Cameroon | - | - | - | - | - | 30 | 10 | 70 | 40 | 21 | 50 | 31 | 10 | 10 | - | 272 |
| Somalia | - | - | - | - | 10 | 10 | - | 80 | 20 | 30 | 20 | 10 | 10 | 10 | - | 200 |
| Sierra leone | - | - | - | 10 | 10 | - | 10 | 20 | 70 | 30 | 20 | 10 | 10 | - | - | 190 |
| Senegal | 10 | - | - | - | 20 | - | 20 | 20 | - | 11 | 40 | 30 | 20 | - | - | 171 |
| Sychelles | - | - | - | - | 11 | - | 40 | 20 | 40 | 30 | 10 | 10 | - | - | - | 161 |
| Libya | - | - | 10 | - | - | - | 40 | 50 | 20 | - | 10 | 10 | 10 | - | - | 150 |
| Madagascar | - | - | - | - | 10 | 30 | 20 | - | 20 | 10 | 30 | 10 | 10 | - | - | 140 |
| Sudan | - | - | - | - | 4 | 20 | - | - | 10 | 30 | 31 | 22 | 10 | - | - | 127 |
| Rwanda | - | - | - | - | - | 30 | 30 | - | 10 | 10 | - | - | 10 | - | - | 90 |
| Reunion | - | - | - | - | 10 | 20 | - | 10 | 20 | 10 | 10 | 10 | - | - | - | 90 |
| Guinea | - | - | - | - | - | 10 | - | 10 | 10 | 30 | 10 | - | - | - | - | 70 |

Table 7: Total Arrivals by Nationality and Age-Group- 2009 (cont'd)

| | AGEGROUP | | | | | | | | | | | | | Not Stated | Total | |
|----------------|------------|-----------|------------|--------------|--------------|--------------|--------------|--------------|--------------|--------------|--------------|--------------|--------------|--------------|-----------|---------------|
| | 0-4 | 5-9 | 10-14 | 15-19 | 20-24 | 25-29 | 30-34 | 35-39 | 40-44 | 45-49 | 50-54 | 55-59 | 60-64 | | | 65+ |
| Cote d ivoire | - | - | - | - | - | - | - | 10 | 20 | 30 | 2 | - | - | - | - | 62 |
| Benin | - | - | - | - | - | - | - | - | 10 | 10 | 10 | 30 | - | - | - | 60 |
| Algeria | - | - | - | - | - | - | 20 | - | - | 30 | - | - | - | - | - | 50 |
| Tunisia | - | - | - | 10 | - | 10 | 10 | - | - | 10 | 10 | - | - | - | - | 50 |
| Burkina faso | - | - | - | - | - | - | 20 | 10 | - | - | - | 10 | 10 | - | - | 50 |
| Togo | - | - | - | - | - | - | - | - | 10 | - | 10 | 20 | - | 10 | - | 50 |
| Gambia | - | - | - | - | - | - | 1 | - | 20 | 10 | 1 | 3 | - | 10 | - | 45 |
| Morocco | - | - | - | - | - | 10 | 10 | - | 10 | - | 11 | - | - | - | - | 41 |
| Comoro | - | - | - | - | - | - | 10 | 20 | 10 | - | - | - | - | - | - | 40 |
| Other Africa | - | - | - | 10 | 10 | 30 | 100 | 150 | 220 | 250 | 291 | 81 | 10 | 30 | - | 1 182 |
| America | 103 | 39 | 160 | 1 903 | 4 068 | 4 079 | 3 784 | 3 115 | 3 095 | 3 509 | 4 317 | 4 793 | 5 648 | 9 338 | 80 | 48 031 |
| USA | 102 | 39 | 148 | 1 495 | 3 196 | 3 117 | 2 716 | 2 324 | 2 494 | 2 857 | 3 275 | 3 890 | 4 756 | 8 349 | 60 | 38 818 |
| Canada | 1 | - | 12 | 304 | 597 | 779 | 703 | 454 | 426 | 497 | 697 | 707 | 791 | 896 | 20 | 6 884 |
| Brazil | - | - | - | 21 | 40 | 51 | 81 | 122 | 20 | 60 | 95 | 24 | 20 | 30 | - | 564 |
| Argentina | - | - | - | 20 | 51 | 31 | 90 | 62 | - | - | 40 | 60 | 20 | - | - | 374 |
| Jamaica | - | - | - | 20 | 30 | - | 20 | 30 | 30 | 30 | 60 | 20 | 10 | - | - | 250 |
| Mexico | - | - | - | 13 | 51 | 40 | 41 | 11 | 23 | 3 | 30 | 1 | 21 | 11 | - | 245 |
| Cuba | - | - | - | - | - | - | 20 | 40 | 30 | 10 | 40 | 20 | - | 20 | - | 180 |
| Trinidad | - | - | - | 10 | - | 10 | - | 20 | - | - | 40 | 30 | - | - | - | 110 |
| Belize | - | - | - | - | 10 | 10 | 31 | 21 | - | 21 | - | 11 | - | 2 | - | 106 |
| Colombia | - | - | - | - | 30 | 10 | 21 | 20 | - | 10 | 10 | - | - | - | - | 101 |
| Chile | - | - | - | - | 11 | 20 | - | - | - | 1 | 10 | 10 | 10 | - | - | 62 |
| Peru | - | - | - | - | 10 | - | - | 1 | 30 | - | - | - | 10 | 10 | - | 61 |
| Paraguay | - | - | - | - | - | - | 30 | - | - | - | 10 | - | - | - | - | 40 |
| Venezuela | - | - | - | 10 | - | - | - | - | 10 | - | - | 10 | 10 | - | - | 40 |
| Other America | - | - | - | 10 | 42 | 11 | 31 | 10 | 32 | 20 | 10 | 10 | - | 20 | - | 196 |

Table 7: Total Arrivals by Nationality and Age-Group- 2009 (cont'd)

| | AGEGROUP | | | | | | | | | | | | | | Not Stated | Total |
|----------------|------------|-----------|------------|--------------|--------------|---------------|---------------|---------------|---------------|---------------|---------------|---------------|---------------|---------------|------------|----------------|
| | 0-4 | 5-9 | 10-14 | 15-19 | 20-24 | 25-29 | 30-34 | 35-39 | 40-44 | 45-49 | 50-54 | 55-59 | 60-64 | 65+ | | |
| Europe | 120 | 75 | 633 | 4 197 | 9 040 | 11 528 | 13 509 | 11 769 | 13 315 | 14 960 | 16 584 | 14 504 | 14 110 | 17 418 | 210 | 141 972 |
| UK | 60 | 10 | 135 | 1 756 | 3 205 | 3 608 | 3 636 | 3 384 | 4 050 | 4 469 | 5 704 | 5 198 | 5 583 | 5 998 | 81 | 46 877 |
| Germany | 10 | 11 | 95 | 594 | 1 491 | 1 723 | 2 060 | 1 842 | 2 716 | 3 016 | 2 908 | 2 845 | 2 429 | 4 744 | 20 | 26 504 |
| Netherlands | 20 | 11 | 110 | 406 | 1 198 | 1 644 | 1 309 | 954 | 1 065 | 1 244 | 1 485 | 1 672 | 1 403 | 1 658 | 41 | 14 220 |
| France | 10 | - | 64 | 320 | 582 | 759 | 926 | 1 091 | 1 004 | 1 197 | 1 012 | 936 | 1 133 | 1 011 | 11 | 10 056 |
| Italy | - | 2 | 22 | 156 | 88 | 559 | 1 127 | 940 | 766 | 822 | 832 | 508 | 326 | 548 | 2 | 6 698 |
| Spain | 10 | - | 20 | 54 | 154 | 410 | 1 036 | 721 | 658 | 586 | 541 | 379 | 313 | 244 | 20 | 5 146 |
| Switzerland | - | - | 13 | 218 | 296 | 440 | 413 | 428 | 448 | 448 | 560 | 539 | 509 | 699 | - | 5 011 |
| Belgiumlux | - | 10 | 10 | 125 | 284 | 314 | 388 | 274 | 417 | 582 | 636 | 437 | 303 | 317 | 2 | 4 099 |
| Ireland | - | - | - | 182 | 250 | 417 | 196 | 187 | 275 | 454 | 285 | 188 | 302 | 259 | - | 2 995 |
| Denmark | - | 10 | 30 | 70 | 214 | 192 | 260 | 154 | 152 | 212 | 366 | 312 | 363 | 539 | 20 | 2 894 |
| Austria | - | - | 31 | 50 | 101 | 205 | 237 | 244 | 171 | 298 | 415 | 257 | 311 | 383 | - | 2 703 |
| Sweden | - | 1 | 31 | 91 | 329 | 234 | 215 | 205 | 191 | 184 | 262 | 163 | 267 | 307 | 1 | 2 481 |
| Portugal | - | 10 | 10 | 44 | 102 | 111 | 238 | 213 | 166 | 257 | 441 | 264 | 142 | 136 | 10 | 2 144 |
| Norway | - | - | 10 | 30 | 403 | 251 | 240 | 121 | 122 | 206 | 131 | 151 | 181 | 161 | - | 2 007 |
| Russia | - | - | 1 | 11 | 71 | 162 | 370 | 230 | 208 | 437 | 255 | 103 | 41 | 111 | 1 | 2 001 |
| Poland | - | - | - | 10 | 32 | 71 | 182 | 134 | 170 | 52 | 134 | 121 | 70 | 70 | - | 1 046 |
| Finland | - | - | 1 | 20 | 80 | 41 | 120 | 62 | 71 | 42 | 133 | 120 | 121 | 20 | - | 831 |
| Yugoslavia | - | - | 10 | 20 | 10 | 20 | 40 | 130 | 201 | 51 | 140 | 40 | 50 | - | - | 712 |
| Czechoslovakia | 10 | - | 20 | - | 10 | 60 | 93 | 62 | 71 | 101 | 53 | 20 | 111 | 31 | - | 642 |
| Bulgaria | - | - | - | 10 | 20 | 52 | 50 | 70 | 80 | 60 | 50 | 10 | 11 | 10 | - | 423 |
| Greece | - | - | - | - | 40 | 10 | 30 | 40 | 81 | 11 | 60 | 50 | 50 | 42 | 1 | 415 |
| Hungary | - | - | - | - | 10 | 40 | 81 | 61 | 40 | 60 | 20 | 20 | 11 | 30 | - | 373 |
| Romania | - | 10 | - | - | - | 31 | 51 | 52 | 71 | 20 | 30 | 30 | 20 | - | - | 315 |
| Slovakia | - | - | 20 | 10 | 20 | 10 | 31 | 40 | 20 | 20 | 30 | 10 | 40 | 10 | - | 261 |
| Croatia | - | - | - | 10 | 10 | 60 | 20 | - | - | 10 | 10 | 70 | 10 | 10 | - | 210 |
| Ukraine | - | - | - | - | - | - | 30 | 60 | 31 | 61 | 1 | - | - | 10 | - | 193 |
| Luxembourg | - | - | - | - | - | 20 | - | 10 | - | 10 | 20 | 10 | - | 10 | - | 80 |
| Latvia | - | - | - | - | - | 32 | - | - | 10 | 10 | - | 10 | - | 10 | - | 72 |
| Estonia | - | - | - | - | - | - | 20 | 10 | - | - | 10 | 1 | - | 10 | - | 51 |

Table 7: Total Arrivals by Nationality and Age-Group- 2009 (cont'd)

| | AGEGROUP | | | | | | | | | | | | | Not Stated | Total | |
|--------------|-----------|-----------|------------|------------|--------------|--------------|--------------|--------------|--------------|--------------|--------------|--------------|--------------|--------------|------------|---------------|
| | 0-4 | 5-9 | 10-14 | 15-19 | 20-24 | 25-29 | 30-34 | 35-39 | 40-44 | 45-49 | 50-54 | 55-59 | 60-64 | | | 65+ |
| Iceland | - | - | - | - | - | - | 10 | 10 | - | 10 | - | - | - | 10 | - | 40 |
| Lithuania | - | - | - | - | 10 | - | - | - | 10 | - | 10 | - | - | 10 | - | 40 |
| Other Europe | - | - | - | 10 | 30 | 52 | 100 | 40 | 50 | 30 | 50 | 40 | 10 | 20 | - | 432 |
| Asia | 60 | 30 | 180 | 936 | 2 939 | 5 963 | 6 887 | 6 663 | 5 580 | 4 766 | 3 364 | 2 759 | 2 673 | 3 690 | 101 | 46 591 |
| India | 10 | 20 | 100 | 413 | 939 | 2 484 | 3 365 | 3 321 | 2 397 | 2 057 | 1 188 | 1 135 | 604 | 623 | 41 | 18 697 |
| China | 20 | 10 | 20 | 131 | 842 | 1 230 | 951 | 1 381 | 1 413 | 1 150 | 610 | 270 | 210 | 140 | 20 | 8 398 |
| Japan | 20 | - | 10 | 90 | 330 | 610 | 713 | 482 | 473 | 344 | 382 | 652 | 1 100 | 2 401 | 10 | 7 617 |
| Pakistan | - | - | - | 60 | 294 | 294 | 570 | 361 | 370 | 121 | 70 | 66 | 81 | 50 | - | 2 337 |
| Sri lanka | 10 | - | 10 | 40 | 210 | 200 | 330 | 201 | 243 | 240 | 244 | 60 | 91 | 92 | - | 1 971 |
| Korea | - | - | 30 | 60 | 60 | 150 | 200 | 100 | 150 | 260 | 281 | 140 | 250 | 90 | - | 1 771 |
| Bangladesh | - | - | - | 21 | 71 | 521 | 322 | 302 | 110 | 80 | 40 | 51 | 21 | 21 | - | 1 560 |
| Israel | - | - | 10 | 11 | 92 | 150 | 80 | 181 | 130 | 140 | 113 | 171 | 121 | 111 | 10 | 1 320 |
| Malaysia | - | - | - | - | 10 | 80 | 40 | 30 | 30 | 90 | 30 | 50 | 40 | 30 | - | 430 |
| Singapore | - | - | - | 30 | 10 | 10 | 32 | 70 | 60 | 71 | 101 | 10 | 10 | - | - | 404 |
| Philippines | - | - | - | - | 11 | 31 | 42 | 23 | 40 | 10 | 51 | 22 | 22 | 20 | 10 | 282 |
| Lebanon | - | - | - | - | - | 30 | 40 | 40 | 20 | 50 | 50 | - | 10 | - | - | 240 |
| Hong kong | - | - | - | - | 20 | 20 | 1 | 20 | 20 | 10 | 70 | 10 | 20 | 20 | - | 211 |
| Taiwan | - | - | - | 10 | - | 20 | 20 | 10 | 10 | 30 | 20 | 10 | 30 | 20 | 10 | 190 |
| Cyprus | - | - | - | - | 10 | 10 | - | - | 30 | 30 | 21 | 40 | 10 | 30 | - | 181 |
| Turkey | - | - | - | - | 10 | 20 | 21 | 30 | 20 | - | 40 | 10 | 10 | 1 | - | 162 |
| Thailand | - | - | - | 10 | - | 21 | 30 | 21 | 3 | 23 | 2 | 22 | 3 | 1 | - | 136 |
| Iran | - | - | - | 20 | 10 | 12 | 10 | 20 | 1 | 20 | 1 | - | - | 20 | - | 114 |
| Myanmar | - | - | - | - | - | 30 | 20 | - | - | 10 | 20 | - | 20 | - | - | 100 |
| Vietnam | - | - | - | 10 | - | - | 40 | - | - | 10 | - | 20 | - | - | - | 80 |
| Indonesia | - | - | - | - | - | - | 10 | 20 | 10 | 20 | - | 10 | - | - | - | 70 |
| Jordan | - | - | - | - | 10 | 10 | - | - | 20 | - | 10 | - | - | - | - | 50 |
| Other Asia | - | - | - | 30 | 10 | 30 | 50 | 50 | 30 | - | 20 | 10 | 20 | 20 | - | 270 |

Table 7: Total Arrivals by Nationality and Age-Group- 2009 (cont'd)

| | AGEGROUP | | | | | | | | | | | | | Not | Total | |
|-----------------------|--------------|--------------|--------------|---------------|----------------|----------------|----------------|----------------|----------------|----------------|----------------|----------------|---------------|---------------|--------------|------------------|
| | 0-4 | 5-9 | 10-14 | 15-19 | 20-24 | 25-29 | 30-34 | 35-39 | 40-44 | 45-49 | 50-54 | 55-59 | 60-64 | 65+ | | Stated |
| Oceania | 9 | 10 | 52 | 486 | 1 254 | 2 326 | 1 658 | 1 041 | 1 031 | 1 116 | 1 251 | 1 490 | 1 601 | 1 553 | 41 | 14 922 |
| Australia | 12 | - | 51 | 424 | 939 | 1 870 | 1 355 | 837 | 775 | 928 | 927 | 1 249 | 1 307 | 1 307 | 41 | 12 022 |
| New zealand | - | 10 | 1 | 62 | 315 | 456 | 303 | 204 | 246 | 178 | 324 | 231 | 284 | 236 | - | 2 850 |
| Other Oceania | - | - | - | - | - | - | - | - | 10 | 10 | - | 10 | 10 | 10 | - | 50 |
| Not Stated | 41 | 21 | 33 | 205 | 798 | 1 048 | 1 307 | 1 015 | 932 | 900 | 717 | 527 | 428 | 440 | 64 | 8 476 |
| Total Arrivals | 3 748 | 2 788 | 6 653 | 50 511 | 198 261 | 381 036 | 389 432 | 361 647 | 280 910 | 208 314 | 167 197 | 117 756 | 77 191 | 84 029 | 6 812 | 2 336 288 |

Table 8 : Total Arrivals by Nationality and Month - 2009

| | January | February | March | April | May | June | July | August | September | October | November | December | Total |
|----------------|----------------|----------------|----------------|----------------|----------------|----------------|----------------|----------------|----------------|----------------|----------------|----------------|------------------|
| Africa | 197 702 | 149 271 | 170 636 | 182 684 | 178 497 | 156 033 | 177 859 | 182 572 | 166 089 | 150 175 | 156 810 | 207 968 | 2 076 296 |
| Zimbabwe | 102 922 | 71 655 | 80 459 | 89 040 | 91 984 | 75 067 | 86 962 | 86 512 | 71 087 | 66 542 | 73 414 | 97 655 | 993 299 |
| South Africa | 60 612 | 50 561 | 59 985 | 63 442 | 55 756 | 56 101 | 63 519 | 65 407 | 64 972 | 55 505 | 56 298 | 76 305 | 728 463 |
| Zambia | 18 584 | 15 608 | 14 990 | 14 571 | 14 985 | 11 548 | 13 228 | 13 691 | 13 964 | 13 647 | 13 134 | 16 798 | 174 748 |
| Namibia | 9 243 | 7 260 | 10 124 | 10 219 | 10 536 | 8 834 | 8 816 | 11 432 | 10 353 | 9 497 | 9 850 | 12 701 | 118 865 |
| Malawi | 1 592 | 870 | 1 202 | 1 201 | 1 292 | 910 | 1 170 | 1 072 | 901 | 1 171 | 671 | 1 002 | 13 054 |
| Lesotho | 550 | 451 | 381 | 772 | 671 | 561 | 962 | 663 | 603 | 533 | 410 | 442 | 6 999 |
| Kenya | 951 | 491 | 601 | 580 | 425 | 442 | 382 | 589 | 581 | 561 | 555 | 631 | 6 789 |
| Mozambique | 811 | 550 | 561 | 570 | 885 | 420 | 621 | 409 | 291 | 460 | 430 | 472 | 6 480 |
| Swaziland | 540 | 340 | 510 | 564 | 491 | 381 | 461 | 712 | 601 | 450 | 380 | 475 | 5 905 |
| Tanzania | 521 | 362 | 441 | 491 | 320 | 445 | 292 | 449 | 794 | 442 | 414 | 346 | 5 317 |
| Nigeria | 270 | 210 | 300 | 341 | 351 | 230 | 240 | 260 | 292 | 252 | 282 | 163 | 3 191 |
| Uganda | 171 | 330 | 180 | 70 | 50 | 281 | 170 | 337 | 320 | 210 | 161 | 310 | 2 590 |
| DRC | 130 | 90 | 220 | 230 | 160 | 121 | 192 | 192 | 512 | 174 | 120 | 227 | 2 368 |
| Mauritius | 114 | 62 | 132 | 162 | 161 | 132 | 163 | 195 | 92 | 161 | 65 | 104 | 1 543 |
| Ghana | 100 | 71 | 70 | 80 | 70 | 110 | 161 | 103 | 112 | 90 | 83 | 92 | 1 142 |
| Angola | 70 | 70 | 70 | 60 | 70 | 20 | 120 | 103 | 70 | 80 | 40 | 80 | 853 |
| Ethiopia | 90 | 60 | 50 | 40 | 90 | 80 | 70 | 44 | 140 | 50 | 81 | 30 | 825 |
| Egypt | 90 | 50 | 30 | 40 | 40 | 70 | 40 | 31 | 73 | 50 | 40 | 20 | 574 |
| Cameroon | 20 | 20 | 40 | 20 | 10 | 10 | 10 | 52 | 40 | 10 | 20 | 20 | 272 |
| Somalia | 10 | 20 | 10 | 20 | 20 | 50 | 10 | 20 | 20 | 10 | 20 | - | 210 |
| Sierra leone | 40 | 10 | 10 | 10 | 10 | - | 10 | 10 | 20 | 20 | 40 | 10 | 190 |
| Senegal | 10 | 20 | 10 | 10 | 10 | - | 20 | 21 | 20 | 30 | 10 | 10 | 171 |
| Sychelles | 10 | 10 | 30 | 30 | 20 | - | 20 | 41 | - | - | - | - | 161 |
| Libya | 30 | - | 10 | - | - | - | 10 | 10 | 10 | 20 | 30 | 30 | 150 |
| Madagascar | 30 | 10 | 30 | - | 10 | 10 | 20 | - | 20 | - | 10 | - | 140 |
| Sudan | 31 | - | 30 | - | 10 | - | 10 | - | - | 30 | 11 | 5 | 127 |
| Rwanda | 10 | - | 20 | 10 | - | 10 | 10 | 10 | - | - | 20 | - | 90 |
| Reunion | - | - | - | 10 | 10 | - | 30 | 10 | 10 | - | 20 | - | 90 |
| Guinea | 20 | - | - | - | - | - | 10 | - | 10 | - | 30 | - | 70 |
| Cote d ivoire | 10 | - | 10 | - | 10 | 20 | - | 12 | - | - | - | - | 62 |
| Benin | - | - | 10 | - | - | - | - | - | 40 | 10 | - | - | 60 |
| Algeria | - | - | 20 | - | - | - | 10 | - | 10 | - | 10 | - | 50 |
| Tunisia | - | - | - | - | - | 10 | - | 10 | 10 | - | 10 | 10 | 50 |
| Burkina faso | - | - | - | - | - | - | - | 20 | 20 | - | 10 | - | 50 |
| Togo | - | - | - | - | 20 | - | 10 | - | 10 | - | 10 | - | 50 |
| Gambia | - | - | - | - | - | - | - | 5 | 20 | 10 | 10 | - | 45 |
| Morocco | - | - | 10 | 11 | - | - | - | - | - | 10 | 10 | - | 41 |
| Comoro | 10 | 10 | - | - | - | 10 | 10 | - | - | - | - | - | 40 |
| Other Africa | 110 | 80 | 90 | 90 | 30 | 170 | 100 | 150 | 71 | 150 | 111 | 30 | 1 182 |
| America | 2 444 | 2 384 | 3 540 | 3 782 | 4 818 | 4 888 | 5 603 | 5 550 | 4 724 | 4 060 | 3 313 | 2 925 | 48 031 |
| USA | 1 775 | 1 837 | 2 793 | 2 946 | 4 072 | 4 289 | 4 646 | 4 543 | 3 920 | 3 099 | 2 529 | 2 369 | 38 818 |
| Canada | 495 | 477 | 606 | 538 | 525 | 444 | 765 | 702 | 608 | 727 | 620 | 377 | 6 884 |
| Brazil | 63 | 10 | 40 | 30 | 51 | 21 | 62 | 90 | 34 | 81 | 32 | 50 | 564 |
| Argentina | 30 | 10 | 10 | 71 | 10 | 51 | 10 | 50 | 61 | 21 | 30 | 20 | 374 |
| Jamaica | 10 | 10 | 40 | - | 20 | 40 | 30 | 30 | 30 | 10 | 30 | - | 250 |
| Mexico | 20 | - | 21 | 2 | 20 | 11 | 30 | 30 | 41 | 41 | 10 | 19 | 245 |
| Cuba | - | 20 | - | 30 | 50 | 10 | 10 | 30 | - | 10 | - | 20 | 180 |
| Trinidad | 10 | 10 | - | - | - | - | 20 | 10 | 20 | 30 | 10 | - | 110 |
| Belize | - | - | - | 65 | - | - | - | - | - | 1 | - | 40 | 106 |
| Colombia | 10 | - | 10 | - | - | 20 | - | 41 | - | - | - | 20 | 101 |
| Chile | 31 | - | 10 | 10 | - | 1 | - | - | - | - | 10 | - | 62 |
| Peru | - | - | - | 20 | 20 | - | 10 | 1 | - | - | 10 | - | 61 |
| Paraguay | - | - | - | - | 10 | - | - | 10 | 10 | - | 10 | - | 40 |
| Venezuela | - | - | - | 10 | - | - | - | 10 | - | 20 | - | - | 40 |
| Other America | - | 10 | 10 | 60 | 40 | 1 | 20 | 3 | - | 20 | 22 | 10 | 196 |
| Europe | 8 583 | 9 280 | 9 621 | 10 669 | 9 851 | 9 128 | 13 653 | 19 368 | 14 924 | 15 320 | 12 658 | 8 917 | 141 972 |
| UK | 3 526 | 3 516 | 3 937 | 3 687 | 3 568 | 3 556 | 4 308 | 5 298 | 4 488 | 4 104 | 3 774 | 3 115 | 46 877 |
| Germany | 1 234 | 1 259 | 1 572 | 1 951 | 1 993 | 1 548 | 2 266 | 3 135 | 3 620 | 3 796 | 2 637 | 1 493 | 26 504 |
| Netherlands | 632 | 889 | 591 | 918 | 810 | 711 | 1 816 | 1 873 | 1 799 | 2 068 | 1 365 | 748 | 14 220 |
| France | 497 | 656 | 765 | 796 | 726 | 509 | 954 | 1 911 | 811 | 1 039 | 850 | 542 | 10 056 |
| Italy | 342 | 213 | 354 | 378 | 474 | 435 | 696 | 2 211 | 608 | 505 | 289 | 193 | 6 698 |
| Spain | 126 | 80 | 210 | 319 | 281 | 353 | 656 | 1 591 | 571 | 396 | 297 | 266 | 5 146 |
| Switzerland | 230 | 225 | 279 | 308 | 335 | 342 | 504 | 405 | 769 | 633 | 635 | 346 | 5 011 |
| Belgiumlux | 158 | 250 | 222 | 284 | 205 | 223 | 674 | 572 | 455 | 395 | 396 | 265 | 4 099 |
| Ireland | 184 | 268 | 263 | 255 | 243 | 352 | 336 | 250 | 198 | 275 | 106 | 265 | 2 995 |
| Denmark | 292 | 400 | 201 | 224 | 122 | 124 | 206 | 151 | 188 | 242 | 571 | 173 | 2 894 |
| Austria | 153 | 114 | 265 | 184 | 236 | 83 | 211 | 446 | 248 | 347 | 275 | 141 | 2 703 |
| Sweden | 200 | 210 | 157 | 202 | 132 | 154 | 103 | 156 | 230 | 151 | 282 | 504 | 2 481 |
| Portugal | 132 | 200 | 180 | 172 | 109 | 104 | 242 | 331 | 177 | 193 | 144 | 160 | 2 144 |
| Norway | 130 | 370 | 150 | 195 | 51 | 91 | 160 | 141 | 130 | 272 | 212 | 105 | 2 007 |

Table 8 : Total Arrivals by Nationality and Month - 2009 (cont'd)

| | January | February | March | April | May | June | July | August | September | October | November | December | Total |
|-----------------------|----------------|----------------|----------------|----------------|----------------|----------------|----------------|----------------|----------------|----------------|----------------|----------------|------------------|
| Russia | 276 | 140 | 143 | 351 | 212 | 133 | 52 | 193 | 160 | 104 | 148 | 89 | 2 001 |
| Poland | 80 | 90 | 31 | 80 | 50 | 22 | 112 | 150 | 110 | 130 | 120 | 71 | 1 046 |
| Finland | 60 | 110 | 60 | 2 | 70 | 82 | 32 | 71 | 70 | 83 | 120 | 71 | 831 |
| Yugoslavia | 60 | 60 | 80 | 80 | 90 | 90 | 50 | 60 | 20 | 62 | 20 | 40 | 712 |
| Czechoslov | 21 | 60 | 30 | 20 | 20 | 33 | 23 | 60 | 70 | 160 | 105 | 40 | 642 |
| Bulgaria | 20 | 60 | 40 | - | 20 | 22 | 30 | 70 | 21 | 20 | 80 | 40 | 423 |
| Greece | 70 | - | 1 | 13 | 21 | 50 | 30 | 80 | 30 | 10 | 40 | 70 | 415 |
| Hungary | 40 | 10 | 30 | 130 | 10 | 20 | - | 41 | 21 | 21 | 50 | - | 373 |
| Romania | 20 | 30 | - | 30 | - | 30 | - | 31 | 10 | 144 | - | 20 | 315 |
| Slovakia | 20 | 20 | - | 10 | 20 | 30 | 40 | 10 | 20 | 30 | 21 | 40 | 261 |
| Croatia | 20 | 10 | 10 | 40 | - | 10 | 40 | - | - | 60 | - | 20 | 210 |
| Ukraine | 30 | 20 | 10 | 10 | 42 | - | 10 | 10 | - | 30 | 31 | - | 193 |
| Luxembourg | - | - | - | - | 10 | - | - | 50 | 10 | - | 10 | - | 80 |
| Latvia | - | 10 | 20 | - | 1 | 1 | 10 | 10 | - | 10 | - | 10 | 72 |
| Estonia | 20 | - | - | 10 | - | - | 10 | 1 | - | - | - | 10 | 51 |
| Iceland | - | - | 10 | - | - | 10 | - | 10 | 10 | - | - | - | 40 |
| Lithuania | - | - | 10 | 10 | - | - | - | - | - | - | 20 | - | 40 |
| Other Europe | 10 | 10 | - | 10 | - | 10 | 82 | 50 | 80 | 40 | 60 | 80 | 432 |
| Asia | 4 234 | 2 931 | 3 736 | 3 671 | 4 322 | 3 519 | 4 125 | 4 060 | 3 823 | 5 165 | 3 176 | 3 829 | 46 591 |
| India | 2 158 | 1 091 | 1 434 | 1 789 | 2 237 | 1 328 | 1 629 | 1 263 | 1 290 | 1 758 | 1 073 | 1 647 | 18 697 |
| China | 610 | 830 | 810 | 750 | 600 | 550 | 731 | 631 | 700 | 680 | 802 | 704 | 8 398 |
| Japan | 160 | 220 | 520 | 340 | 590 | 620 | 800 | 959 | 982 | 1 602 | 421 | 403 | 7 617 |
| Pakistan | 255 | 230 | 231 | 201 | 191 | 240 | 91 | 123 | 131 | 239 | 173 | 232 | 2 337 |
| Sri lanka | 360 | 80 | 110 | 160 | 190 | 140 | 111 | 91 | 192 | 234 | 163 | 140 | 1 971 |
| Korea | 150 | 90 | 110 | 50 | 40 | 130 | 310 | 290 | 91 | 110 | 130 | 270 | 1 771 |
| Bangladesh | 220 | 120 | 141 | 160 | 120 | 110 | 70 | 171 | 93 | 80 | 142 | 133 | 1 560 |
| Israel | 110 | 120 | 100 | 64 | 70 | 141 | 90 | 151 | 202 | 120 | 91 | 61 | 1 320 |
| Malaysia | 40 | 30 | 80 | 10 | 50 | 40 | 40 | 30 | 40 | 20 | 20 | 30 | 430 |
| Singapore | 10 | 20 | 30 | 12 | 80 | 60 | 30 | 20 | - | 60 | 20 | 62 | 404 |
| Philippines | 31 | 10 | - | 30 | 24 | 10 | 30 | 30 | 40 | 10 | 20 | 47 | 282 |
| Lebanon | 60 | 30 | 20 | 10 | 10 | 20 | 20 | 30 | 20 | - | 20 | - | 240 |
| Hong kong | - | - | 10 | 10 | 20 | 20 | 51 | 30 | 10 | 10 | 30 | 20 | 211 |
| Taiwan | 10 | - | 10 | 20 | 20 | 20 | 10 | 70 | 10 | 10 | - | 10 | 190 |
| Cyprus | 10 | 10 | 20 | - | 20 | 20 | - | 60 | - | 20 | 11 | 10 | 181 |
| Turkey | - | 10 | 10 | - | 10 | 40 | 11 | 31 | 10 | 20 | 10 | 10 | 162 |
| Thailand | 10 | 10 | 40 | 15 | 10 | - | - | 20 | 11 | - | 20 | - | 136 |
| Iran | - | - | 10 | - | 10 | - | 21 | 20 | 1 | 32 | 10 | 10 | 114 |
| Myanmar | 30 | - | 20 | 10 | 10 | - | 10 | - | - | 10 | 10 | - | 100 |
| Vietnam | - | - | 10 | 10 | 20 | 10 | - | - | - | 30 | - | - | 80 |
| Indonesia | - | - | 10 | 10 | - | - | 20 | - | - | 10 | - | 20 | 70 |
| Jordan | - | - | - | 10 | - | - | - | 10 | - | 30 | - | - | 50 |
| Other Asia | 10 | 30 | 10 | 10 | - | 10 | 50 | 30 | - | 80 | 10 | 20 | 260 |
| Oceania | 1 063 | 755 | 1 056 | 1 126 | 1 245 | 1 275 | 1 734 | 1 610 | 1 528 | 1 383 | 1 108 | 1 039 | 14 922 |
| Australia | 848 | 640 | 796 | 992 | 1 015 | 968 | 1 464 | 1 199 | 1 204 | 1 161 | 898 | 837 | 12 022 |
| New zealand | 175 | 115 | 260 | 134 | 230 | 297 | 270 | 411 | 324 | 222 | 210 | 202 | 2 850 |
| Other Oceania | 40 | - | - | - | - | 10 | - | - | - | - | - | - | 30 |
| Not Stated | 637 | 332 | 468 | 225 | 482 | 404 | 404 | 619 | 305 | 490 | 3 398 | 712 | 8 476 |
| Total Arrivals | 214 663 | 164 953 | 189 057 | 202 157 | 199 215 | 175 247 | 203 378 | 213 779 | 191 393 | 176 593 | 180 463 | 225 390 | 2 336 288 |

Table 9: Total Arrivals by Country of Residence and Month - 2009

| | January | February | March | April | May | June | July | August | September | October | November | December | Total |
|-----------------|----------------|----------------|----------------|----------------|----------------|----------------|----------------|----------------|----------------|----------------|----------------|----------------|------------------|
| Africa | 202 330 | 150 690 | 174 456 | 188 612 | 181 103 | 159 197 | 175 780 | 184 471 | 169 587 | 155 049 | 161 716 | 208 901 | 2 111 892 |
| Zimbabwe | 84 257 | 61 186 | 70 035 | 75 651 | 77 347 | 64 033 | 72 484 | 69 720 | 64 388 | 52 878 | 63 871 | 83 497 | 839 347 |
| Republic of Sou | 56 789 | 45 755 | 56 429 | 61 465 | 51 850 | 53 542 | 60 087 | 61 404 | 62 423 | 52 995 | 49 966 | 73 726 | 686 431 |
| Botswana | 32 805 | 19 948 | 21 197 | 24 804 | 24 571 | 20 014 | 18 494 | 25 484 | 15 505 | 24 443 | 23 190 | 20 638 | 271 093 |
| Zambia | 16 149 | 14 174 | 13 848 | 13 229 | 13 725 | 10 245 | 12 267 | 12 640 | 12 315 | 12 428 | 12 248 | 15 121 | 158 389 |
| Namibia | 9 747 | 7 444 | 10 264 | 10 547 | 10 795 | 8 997 | 8 951 | 11 979 | 10 954 | 9 835 | 9 562 | 13 443 | 122 518 |
| Lesotho | 350 | 341 | 312 | 641 | 460 | 431 | 932 | 522 | 502 | 373 | 330 | 282 | 5 476 |
| Malawi | 400 | 370 | 430 | 370 | 501 | 350 | 550 | 514 | 592 | 470 | 500 | 351 | 5 398 |
| Swaziland | 560 | 280 | 400 | 482 | 441 | 301 | 451 | 635 | 481 | 390 | 410 | 523 | 5 354 |
| Mozambique | 340 | 350 | 320 | 361 | 613 | 290 | 461 | 298 | 221 | 240 | 420 | 344 | 4 258 |
| Tanzania | 230 | 260 | 270 | 311 | 161 | 262 | 150 | 219 | 700 | 192 | 294 | 174 | 3 223 |
| Kenya | 330 | 180 | 300 | 210 | 188 | 241 | 142 | 302 | 341 | 250 | 313 | 252 | 3 049 |
| Democratic Rep | 50 | 90 | 140 | 140 | 90 | 70 | 120 | 72 | 461 | 93 | 50 | 177 | 1 553 |
| Uganda | 20 | 120 | 80 | 50 | 20 | 91 | 110 | 155 | 190 | 120 | 200 | 170 | 1 326 |
| Angola | 70 | 40 | 100 | 70 | 60 | 30 | 90 | 106 | 50 | 41 | 30 | 60 | 747 |
| Mauritius | 13 | 22 | 51 | 60 | 60 | 50 | 110 | 134 | 70 | 90 | 31 | 30 | 721 |
| Nigeria | 30 | 20 | 60 | 100 | 51 | 30 | 71 | 60 | 72 | 61 | 50 | 42 | 647 |
| Ghana | 20 | - | 10 | 10 | 40 | 20 | 80 | 23 | 80 | 30 | 40 | - | 353 |
| Ethiopia | 10 | 30 | 40 | 20 | 40 | 40 | 30 | 11 | 30 | 10 | 10 | - | 271 |
| Egypt | - | 20 | 20 | 11 | 20 | 30 | 40 | 30 | 40 | 20 | 20 | 10 | 261 |
| Madagascar | 40 | 10 | 20 | - | 10 | 20 | 30 | 10 | - | - | 10 | 10 | 160 |
| Cameroon | 20 | 10 | 10 | 10 | - | - | - | 22 | 20 | 10 | 20 | 20 | 142 |
| Rwanda | 20 | - | 10 | 10 | - | 20 | 20 | 11 | - | - | 30 | - | 121 |
| Senegal | - | 10 | 10 | - | - | 10 | 30 | 11 | 1 | 20 | 11 | 10 | 113 |
| Tunisia | 10 | - | 10 | 20 | 10 | 10 | - | 30 | 10 | - | - | - | 100 |
| Sychelles | - | 10 | 20 | 10 | 10 | 10 | 10 | 22 | - | - | - | - | 92 |
| Libya | 10 | - | 10 | - | - | - | 10 | 10 | 10 | - | 30 | 10 | 90 |
| Sudan | 30 | - | - | - | - | - | 10 | - | 1 | 10 | - | - | 51 |
| Morocco | - | - | 10 | 10 | - | 10 | - | - | - | 10 | 10 | - | 50 |
| Benin | - | - | 10 | - | - | - | - | - | 40 | - | - | - | 50 |
| Sierra leone | 10 | 10 | - | - | - | - | - | - | 10 | - | 20 | - | 50 |
| Reunion | 10 | - | 10 | 10 | - | - | 10 | - | - | - | - | - | 40 |
| Somalia | - | - | - | 10 | 10 | - | 10 | - | - | - | 10 | - | 40 |
| Other Africa | 10 | 10 | 30 | - | 30 | 50 | 30 | 47 | 80 | 40 | 40 | 11 | 378 |
| America | 1 991 | 1 972 | 3 094 | 3 006 | 4 251 | 4 373 | 5 282 | 4 878 | 4 271 | 3 334 | 2 772 | 2 439 | 41 663 |
| United States A | 1 511 | 1 535 | 2 465 | 2 493 | 3 662 | 3 961 | 4 427 | 4 207 | 3 601 | 2 586 | 2 130 | 1 961 | 34 539 |
| Canada | 374 | 427 | 528 | 397 | 457 | 326 | 693 | 585 | 505 | 595 | 528 | 339 | 5 754 |
| Brazil | 35 | - | 50 | 10 | 12 | 11 | 72 | 40 | 34 | 51 | 31 | 50 | 396 |
| Argentina | 10 | 10 | - | 41 | 10 | 41 | 10 | 20 | 51 | 20 | 10 | 20 | 243 |
| Mexico | 10 | - | 11 | 2 | 10 | - | 20 | 13 | 40 | 41 | - | 19 | 166 |
| Cuba | - | - | - | - | 50 | 10 | - | - | - | 11 | 10 | - | 81 |
| Jamaica | 10 | - | 20 | - | 10 | 10 | 10 | - | - | - | 20 | - | 80 |
| Chile | 31 | - | 10 | 10 | - | 2 | - | - | 10 | - | 1 | - | 64 |
| Trinidad | - | - | - | 1 | - | - | 20 | - | 20 | 10 | 10 | - | 61 |
| Colombia | - | - | - | - | - | 10 | - | - | - | - | - | 30 | 40 |
| Peru | - | - | - | 10 | 10 | - | 10 | - | - | - | 10 | - | 40 |
| Other America | 10 | - | 10 | 42 | 30 | 2 | 20 | 13 | 10 | 20 | 22 | 20 | 199 |
| Europe | 4 863 | 6 316 | 6 748 | 7 207 | 7 236 | 5 809 | 11 604 | 16 029 | 11 981 | 12 042 | 11 484 | 5 907 | 107 226 |
| United Kingdom | 1 447 | 1 904 | 2 286 | 1 932 | 2 102 | 1 886 | 3 396 | 3 468 | 3 041 | 2 548 | 2 758 | 1 565 | 28 333 |
| Germany | 880 | 1 057 | 1 330 | 1 537 | 1 789 | 1 158 | 1 971 | 2 830 | 3 121 | 3 341 | 2 740 | 1 150 | 22 904 |
| Netherlands | 489 | 647 | 499 | 705 | 650 | 416 | 1 678 | 1 729 | 1 555 | 1 802 | 1 436 | 550 | 12 156 |
| France | 361 | 494 | 637 | 659 | 541 | 408 | 786 | 1 763 | 785 | 886 | 792 | 367 | 8 479 |
| Italy | 202 | 142 | 224 | 253 | 354 | 326 | 622 | 2 010 | 462 | 432 | 299 | 160 | 5 486 |
| Spain | 98 | 30 | 180 | 266 | 258 | 342 | 656 | 1 566 | 561 | 383 | 317 | 236 | 4 893 |
| Switzerland | 190 | 176 | 239 | 286 | 320 | 282 | 518 | 394 | 741 | 643 | 646 | 323 | 4 758 |
| Belgiumlux | 78 | 210 | 158 | 183 | 166 | 143 | 627 | 447 | 336 | 346 | 377 | 193 | 3 264 |
| Denmark | 240 | 330 | 160 | 122 | 71 | 80 | 165 | 101 | 137 | 182 | 480 | 143 | 2 211 |
| Austria | 61 | 72 | 234 | 92 | 191 | 51 | 190 | 388 | 228 | 314 | 236 | 101 | 2 158 |
| Sweden | 160 | 190 | 147 | 171 | 111 | 140 | 70 | 144 | 169 | 131 | 269 | 409 | 2 111 |
| Norway | 90 | 360 | 140 | 174 | 51 | 70 | 150 | 90 | 130 | 212 | 182 | 134 | 1 783 |
| Ireland | 110 | 124 | 120 | 170 | 128 | 173 | 263 | 185 | 120 | 131 | 73 | 174 | 1 771 |
| Russia | 216 | 110 | 93 | 280 | 202 | 93 | 62 | 182 | 130 | 94 | 148 | 69 | 1 679 |
| Portugal | 31 | 140 | 100 | 82 | 70 | 52 | 111 | 219 | 114 | 90 | 165 | 61 | 1 235 |
| Poland | 30 | 50 | 10 | 50 | 20 | 30 | 82 | 120 | 89 | 90 | 150 | 60 | 781 |
| Finland | 40 | 100 | 50 | 2 | 60 | 52 | 32 | 50 | 40 | 52 | 120 | 61 | 659 |
| Czechoslovakia | 10 | 60 | 20 | 10 | 20 | 23 | 23 | 60 | 60 | 130 | 95 | 40 | 551 |
| Hungary | 40 | 10 | 30 | 130 | 10 | 20 | - | 22 | 20 | 11 | 60 | - | 353 |
| Romania | 20 | 30 | - | 40 | - | 10 | - | 10 | 20 | 134 | - | - | 264 |
| Greece | 30 | - | 11 | 3 | 10 | 13 | 30 | 80 | 21 | - | 10 | 21 | 229 |
| Slovakia | - | 20 | - | - | 20 | 10 | 30 | 10 | 30 | 30 | 10 | 10 | 170 |
| Ukraine | 20 | 10 | 20 | 10 | 32 | - | 10 | 10 | 10 | 20 | 21 | - | 163 |

Table 9 : Total Arrivals by Country of Residence and Month - 2009 (cont'd)

| | January | February | March | April | May | June | July | August | September | October | November | December | Total |
|-------------------|----------------|----------------|----------------|----------------|----------------|----------------|----------------|----------------|----------------|----------------|----------------|----------------|------------------|
| Luxembourg | - | 10 | - | - | 10 | - | 10 | 100 | 10 | - | 10 | - | 150 |
| Croatia | - | - | - | 20 | 10 | 10 | 30 | 10 | - | 20 | - | 10 | 110 |
| Bulgaria | - | 30 | - | - | 10 | - | 20 | 10 | 1 | - | 10 | 10 | 91 |
| Latvia | - | - | 20 | - | - | - | - | - | - | 10 | - | 20 | 50 |
| Lithuania | - | - | 10 | - | - | 10 | - | - | - | - | 20 | - | 40 |
| Yugoslavia | 10 | - | 20 | - | 10 | - | - | - | - | - | - | - | 40 |
| Other Europe | 10 | 10 | 10 | 30 | 20 | 11 | 72 | 31 | 50 | 10 | 60 | 40 | 354 |
| Asia | 865 | 1 030 | 1 801 | 1 206 | 1 772 | 1 660 | 2 587 | 1 950 | 2 020 | 2 728 | 1 538 | 1 551 | 20 708 |
| Japan | 120 | 210 | 510 | 310 | 530 | 544 | 740 | 816 | 930 | 1 532 | 413 | 331 | 6 986 |
| India | 232 | 220 | 490 | 212 | 566 | 284 | 823 | 184 | 434 | 279 | 296 | 273 | 4 293 |
| China | 200 | 280 | 440 | 410 | 280 | 281 | 433 | 192 | 250 | 460 | 388 | 363 | 3 977 |
| Korea | 80 | 80 | 50 | 30 | 30 | 70 | 220 | 200 | 60 | 70 | 90 | 180 | 1 160 |
| Israel | 60 | 70 | 60 | 34 | 40 | 60 | 41 | 153 | 161 | 80 | 71 | 71 | 901 |
| Pakistan | 11 | 40 | 31 | 31 | 52 | 60 | 40 | 54 | 11 | 24 | 61 | 61 | 476 |
| Malaysia | 30 | 20 | 80 | 10 | 40 | 50 | 40 | 30 | 30 | 20 | 20 | 50 | 420 |
| Singapore | 10 | 30 | 20 | 21 | 80 | 70 | 41 | 14 | - | 53 | 10 | 52 | 401 |
| Sri lanka | 40 | 10 | 20 | 30 | 30 | 30 | 20 | 21 | 30 | 20 | 40 | 20 | 311 |
| Bangladesh | - | 30 | 30 | 20 | 40 | 20 | - | 50 | 42 | - | 52 | 22 | 306 |
| Hong kong | 40 | - | 20 | 11 | 20 | 31 | 34 | 52 | 11 | 10 | 30 | 20 | 279 |
| Turkey | - | 10 | 10 | - | - | 30 | 11 | 44 | 10 | 20 | 20 | 20 | 175 |
| Philippines | 2 | - | - | 11 | 14 | 10 | 40 | 10 | - | 10 | - | 28 | 125 |
| Taiwan | - | - | - | - | 10 | 20 | 10 | 70 | - | - | - | - | 110 |
| Thailand | - | 10 | 10 | 15 | - | - | - | 20 | 10 | 10 | 20 | - | 95 |
| Lebanon | 10 | - | 10 | - | - | 20 | 10 | 10 | - | - | 10 | 10 | 80 |
| Cyprus | - | - | - | - | 10 | 30 | - | 20 | - | 10 | 1 | - | 71 |
| Iran | - | - | - | - | - | 10 | 20 | 10 | 1 | 20 | - | 10 | 71 |
| Vietnam | - | - | - | 10 | 10 | - | 12 | - | - | 20 | - | - | 52 |
| Indonesia | 20 | - | 10 | 10 | - | - | 1 | - | - | - | - | - | 41 |
| Jordan | - | - | - | 10 | - | - | - | - | - | 30 | - | - | 40 |
| Saudi arabia | - | 10 | - | - | - | - | - | - | 20 | 10 | - | - | 40 |
| Other Asia | 10 | 10 | 10 | 31 | 20 | 40 | 51 | - | 20 | 50 | 16 | 40 | 298 |
| Oceania | 849 | 678 | 879 | 984 | 1 034 | 1 095 | 1 470 | 1 527 | 1 349 | 1 238 | 976 | 1 008 | 13 087 |
| Australia | 709 | 587 | 707 | 890 | 873 | 872 | 1 287 | 1 258 | 1 132 | 1 057 | 793 | 854 | 11 019 |
| New zealand | 140 | 91 | 172 | 94 | 161 | 213 | 183 | 269 | 217 | 181 | 183 | 154 | 2 058 |
| Other Oceania | - | - | - | - | - | 10 | - | - | - | - | - | - | 10 |
| Not Stated | 3 765 | 4 267 | 2 079 | 1 142 | 3 819 | 3 113 | 6 655 | 4 924 | 2 185 | 2 202 | 1 977 | 5 584 | 41 712 |
| Total | 214 663 | 164 953 | 189 057 | 202 157 | 199 215 | 175 247 | 203 378 | 213 779 | 191 393 | 176 593 | 180 463 | 225 390 | 2 336 288 |

Table 10: Total Arrivals by Boarder Post and Continent of nationality - Year 2009

| | Africa | America | Europe | Asia | Oceania | Not Stated | Total |
|---------------------------|------------------|---------------|----------------|---------------|---------------|--------------|------------------|
| Road | | | | | | | |
| Tlokweng gate | 236 110 | 4 330 | 12 600 | 10 570 | 760 | 400 | 264 770 |
| Parrshalt | 20 450 | 120 | 670 | 90 | 100 | 70 | 21 500 |
| Mamono | 93 730 | 990 | 8 240 | 660 | 580 | 160 | 104 360 |
| Sikwane | 17 690 | 190 | 470 | 60 | 20 | 50 | 18 480 |
| Ramotswa | 23 050 | 130 | 2 040 | 830 | 90 | 10 | 26 150 |
| Ramokgwebana road | 806 370 | 520 | 4 610 | 530 | 200 | 2 610 | 814 840 |
| Kazungula road | 70 360 | 8 780 | 18 890 | 8 200 | 2 470 | 110 | 108 810 |
| Mohembo | 10 340 | 860 | 9 490 | 80 | 1 170 | 30 | 21 970 |
| Plaatjan | 20 500 | 790 | 3 990 | 170 | 190 | 30 | 25 670 |
| Pointdrift | 9 580 | 610 | 4 200 | 30 | 180 | 40 | 14 640 |
| Ngoma | 29 810 | 720 | 10 180 | 220 | 680 | 270 | 41 880 |
| Zanzibar | 3 075 | 40 | 312 | 1 | 19 | 4 | 3 451 |
| Makopong | 853 | 1 | 13 | 1 | 1 | 3 | 872 |
| Martinsdrift | 134 150 | 1 400 | 8 540 | 1 640 | 1 660 | 640 | 148 030 |
| Pandamatenge | 929 | 29 | 231 | 8 | 8 | - | 1 205 |
| Kazungula ferry | 144 980 | 8 040 | 18 630 | 1 320 | 3 210 | 150 | 176 330 |
| Phitshanemolopo | 8 810 | 10 | 180 | 70 | - | 50 | 9 120 |
| Bray | 4 165 | 4 | 20 | - | 3 | 1 | 4 193 |
| Ramatlabama road | 127 730 | 670 | 2 130 | 3 140 | 120 | 1 970 | 135 760 |
| Pioneer gate | 138 010 | 1 050 | 4 710 | 2 960 | 230 | 870 | 147 830 |
| Bokspits | 2 589 | 44 | 87 | 6 | 1 | 71 | 2 798 |
| Tshabobg | 5 525 | 9 | 290 | 88 | 9 | 44 | 5 965 |
| Kasane | 18 040 | 1 090 | 3 100 | 30 | 190 | 120 | 22 570 |
| Maitengwe | 26 830 | 10 | 30 | 10 | - | 70 | 26 950 |
| Matsiloje | 40 270 | 90 | 230 | - | 10 | 50 | 40 650 |
| Middlepits | 3 043 | 4 | 26 | - | 1 | 2 | 3 076 |
| Two rivers | 1 388 | 12 | 295 | - | 15 | 10 | 1 720 |
| Limpopo valley | 297 | 357 | 183 | - | 34 | 1 | 872 |
| Dobe | 679 | 37 | 350 | - | 7 | 14 | 1 087 |
| Kwando | 163 | 2 489 | 137 | 3 | 8 | 11 | 2 811 |
| Shakawe | 18 | 1 | - | - | - | - | 19 |
| Rail | | | | | | | |
| Ramokgwebana Rail | 18 310 | 80 | 500 | 10 | 40 | 40 | 18 980 |
| Air | | | | | | | |
| Sir Seretse khama Airport | 48 630 | 6 480 | 13 610 | 15 210 | 1 320 | 420 | 85 670 |
| Francistown airport | 1 900 | 119 | 323 | 64 | 66 | 7 | 2 479 |
| Maun airport | 4 780 | 6 910 | 11 070 | 500 | 1 240 | 140 | 24 640 |
| Selibepikwe airport | 208 | 6 | 99 | 2 | 2 | - | 317 |
| Orapa | 124 | 1 | 5 | - | 1 | 1 | 132 |
| Kasane airport | 1 379 | 972 | 1 299 | 83 | 283 | 5 | 4 021 |
| Sowa Airport | 800 | 1 | 126 | 3 | 3 | 2 | 935 |
| Jwaneng | 631 | 35 | 66 | 2 | 1 | - | 735 |
| Total | 2 076 296 | 48 031 | 141 972 | 46 591 | 14 922 | 8 476 | 2 336 288 |

Table 11: Total Arrivals by Boarder Post and Month of Arrival - 2009

| | January | February | March | April | May | June | July | August | September | October | November | December | Total |
|---------------------|---------|----------|--------|--------|--------|--------|--------|--------|-----------|---------|----------|----------|---------|
| Ramokgwebana road | 89 820 | 58 110 | 65 890 | 75 430 | 78 490 | 60 900 | 71 580 | 69 390 | 55 790 | 50 730 | 60 260 | 78 450 | 814 840 |
| Tlokweng gate | 20 910 | 18 910 | 21 920 | 23 610 | 23 100 | 22 450 | 24 980 | 22 850 | 24 070 | 24 010 | 23 920 | 14 040 | 264 770 |
| Kazungula ferry | 17 230 | 14 410 | 14 260 | 14 970 | 14 730 | 11 520 | 15 280 | 15 760 | 14 530 | 14 320 | 13 210 | 16 110 | 176 330 |
| Martinsdrift | 10 020 | 9 550 | 10 710 | 10 340 | 11 200 | 11 360 | 13 580 | 14 120 | 12 700 | 11 800 | 9 940 | 22 710 | 148 030 |
| Pioneer gate | 9 360 | 9 080 | 20 980 | 11 670 | 10 790 | 11 320 | 11 640 | 11 610 | 12 040 | 11 600 | 11 410 | 16 330 | 147 830 |
| Ramatlabama road | 10 210 | 8 900 | 10 090 | 11 720 | 11 220 | 10 250 | 12 010 | 11 430 | 11 660 | 11 200 | 10 770 | 16 300 | 135 760 |
| Kazungula road | 9 200 | 6 920 | 7 990 | 9 470 | 8 810 | 8 210 | 11 260 | 10 830 | 8 870 | 10 250 | 7 440 | 9 560 | 108 810 |
| Mamono | 10 310 | 6 290 | 7 450 | 10 470 | 8 890 | 7 140 | 7 710 | 9 300 | 8 470 | 8 470 | 7 920 | 11 940 | 104 360 |
| Sir Seretse khama | 7 020 | 6 390 | 7 650 | 6 380 | 7 190 | 6 940 | 7 350 | 7 460 | 7 540 | 7 540 | 8 220 | 5 990 | 85 670 |
| Ngoma | 3 420 | 2 150 | 2 670 | 3 310 | 3 610 | 3 130 | 2 350 | 5 160 | 4 370 | 3 950 | 3 340 | 4 420 | 41 880 |
| Matsiloje | 6 650 | 2 530 | 2 500 | 3 830 | 3 090 | 2 830 | 3 180 | 3 530 | 2 760 | 2 730 | 2 560 | 4 460 | 40 650 |
| Maitengwe | 4 450 | 2 050 | 1 890 | 2 620 | 1 990 | 1 870 | 2 080 | 2 240 | 2 090 | 1 690 | 1 550 | 2 430 | 26 950 |
| Ramotswa | 1 890 | 1 250 | 1 810 | 1 790 | 2 210 | 2 330 | 2 470 | 2 280 | 2 360 | 2 400 | 1 960 | 3 400 | 26 150 |
| Plaatjan | 490 | 700 | 370 | 1 190 | 680 | 650 | 840 | 7 930 | 7 370 | 460 | 4 120 | 870 | 25 670 |
| Maun airport | 930 | 980 | 1 750 | 2 180 | 2 610 | 2 210 | 2 660 | 3 020 | 2 530 | 2 460 | 1 880 | 1 430 | 24 640 |
| Kasane | 1 530 | 1 340 | 1 600 | 1 490 | 1 500 | 1 740 | 2 130 | 2 230 | 2 300 | 2 060 | 2 170 | 2 480 | 22 570 |
| Mohembo | 1 370 | 880 | 870 | 1 280 | 1 460 | 1 220 | 2 750 | 3 280 | 2 370 | 2 460 | 2 190 | 1 840 | 21 970 |
| Parrshalt | 900 | 970 | 1 350 | 2 500 | 1 400 | 1 810 | 1 760 | 2 000 | 1 720 | 1 360 | 1 220 | 4 510 | 21 500 |
| ramokgwebana Rail | 3 930 | 2 810 | 2 390 | 1 940 | 1 420 | 1 130 | 1 000 | 880 | 970 | 1 000 | 850 | 660 | 18 980 |
| Sikwane | 1 170 | 1 140 | 1 330 | 1 760 | 1 400 | 1 250 | 1 640 | 1 670 | 1 450 | 1 510 | 1 500 | 2 660 | 18 480 |
| Pointdrift | 1 040 | 5 040 | 570 | 750 | 640 | 800 | 990 | 1 480 | 970 | 970 | 800 | 590 | 14 640 |
| Phitshanemolopo | 830 | 2 970 | 530 | 540 | 410 | 440 | 460 | 660 | 530 | 500 | 410 | 840 | 9 120 |
| Tshabobg | 377 | 272 | 412 | 570 | 59 | 734 | 692 | 600 | 603 | 576 | 441 | 629 | 5 965 |
| Bray | 270 | 236 | 372 | 411 | 304 | 440 | 382 | 432 | 435 | 328 | 299 | 284 | 4 193 |
| Kasane airport | 154 | 111 | 170 | 361 | 415 | 420 | 126 | 751 | 618 | 56 | 425 | 414 | 4 021 |
| Zanzibar | 138 | 21 | 181 | 112 | 264 | 396 | 366 | 532 | 494 | 384 | 240 | 323 | 3 451 |
| Middlepits | 237 | 235 | 223 | 324 | 197 | 230 | 272 | 348 | 211 | 235 | 210 | 354 | 3 076 |
| Kwando | 91 | 94 | 144 | 193 | 258 | 272 | 373 | 681 | 228 | 241 | 153 | 83 | 2 811 |
| Bokspits | 213 | 195 | 182 | 232 | 263 | 202 | 377 | 205 | 243 | 166 | 248 | 272 | 2 798 |
| Francistown airport | 92 | 94 | 130 | 106 | 125 | 241 | 241 | 292 | 299 | 257 | 255 | 347 | 2 479 |

Table 11: Total Arrivals by Boarder Post and Month of Arrival - 2009 (cont'd)

| | January | February | March | April | May | June | July | August | September | October | November | December | Total |
|----------------------|----------------|----------------|----------------|----------------|----------------|----------------|----------------|----------------|----------------|----------------|----------------|----------------|------------------|
| Two rivers | 69 | 58 | 141 | 243 | 104 | 180 | 215 | 159 | 162 | 155 | 100 | 134 | 1 720 |
| Pandamatenge | 66 | 66 | 87 | 109 | 126 | 89 | 109 | 141 | 123 | 176 | 54 | 59 | 1 205 |
| Dobe | 50 | 23 | 112 | - | - | 110 | 190 | 195 | 124 | 86 | 78 | 119 | 1 087 |
| Sowa Airport | 78 | 54 | 94 | 60 | 109 | 109 | 112 | 58 | 45 | 82 | 79 | 55 | 935 |
| Makopong | 49 | 45 | 55 | 53 | 90 | 77 | 31 | 79 | 95 | 108 | 52 | 138 | 872 |
| Limpopo valley | 39 | 33 | 112 | 53 | 45 | 90 | 78 | 90 | 129 | 44 | 81 | 78 | 872 |
| Jwaneng | 20 | 15 | 48 | 47 | - | 131 | 64 | 60 | 42 | 190 | 73 | 45 | 735 |
| Selibephikwe airport | 11 | 24 | 18 | 35 | 15 | 24 | 43 | 28 | 57 | 33 | 13 | 16 | 317 |
| Orapa | 29 | 7 | 6 | 8 | 1 | - | 7 | 16 | 12 | 6 | 20 | 20 | 132 |
| Shakawe | - | - | - | - | - | 2 | - | 2 | 13 | - | 2 | - | 19 |
| Total | 214 663 | 164 953 | 189 057 | 202 157 | 199 215 | 175 247 | 203 378 | 213 779 | 191 393 | 176 593 | 180 463 | 225 390 | 2 336 288 |

Table 12: Total Arrivals by Month of Arrival and mode of travel - 2009

| | Rail | Road | Air | Other | Not Stated | Total |
|-----------------------|---------------|------------------|----------------|--------------|-------------------|------------------|
| January | 3 930 | 202 312 | 8 373 | 48 | - | 214 663 |
| February | 2 810 | 154 431 | 7 712 | - | - | 164 953 |
| March | 2 390 | 176 675 | 9 978 | 14 | - | 189 057 |
| April | 1 940 | 190 987 | 9 230 | - | - | 202 157 |
| May | 1 420 | 187 285 | 10 510 | - | - | 199 215 |
| June | 1 130 | 163 950 | 10 167 | - | - | 175 247 |
| July | 1 000 | 191 690 | 10 688 | - | - | 203 378 |
| August | 880 | 201 111 | 11 788 | - | - | 213 779 |
| September | 970 | 179 139 | 11 284 | - | - | 191 393 |
| October | 1 001 | 164 692 | 10 725 | 164 | 11 | 176 593 |
| November | 850 | 168 349 | 11 143 | 104 | 17 | 180 463 |
| December | 660 | 214 429 | 10 301 | - | - | 225 390 |
| Total Arrivals | 18 981 | 2 195 050 | 121 899 | 330 | 28 | 2 336 288 |
| Percent | 0.81 | 93.95 | 5.22 | 0.01 | 0.00 | 100.00 |

Table 13: Total Arrivals by Month and Quarter for Years 1999 - 2009

| Month | 1999 | 2000 | 2001 | 2002 | 2003 | 2004 | 2005 | 2006 | 2007 | 2008 | 2009 |
|---------------------|------------------|------------------|------------------|------------------|------------------|------------------|------------------|------------------|------------------|------------------|------------------|
| January | 156,168 | 177,314 | 158,245 | 164,526 | 165,224 | 178,461 | 188,193 | 171,519 | 200,776 | 162,070 | 214 663 |
| February | 110,762 | 124,349 | 116,630 | 135,340 | 146,459 | 151,140 | 152,307 | 79,914 | 121,972 | 170,089 | 164 953 |
| March | 117,392 | 194,500 | 134,999 | 154,379 | 160,986 | 160,143 | 177,844 | 165,986 | 157,346 | 196,316 | 189 057 |
| 1 st Quarter | 384,322 | 496,163 | 409,874 | 454,245 | 472,669 | 489,744 | 518,344 | 417,419 | 480,094 | 528,475 | 568 673 |
| April | 184,780 | 145,192 | 135,026 | 158,707 | 168,918 | 173,633 | 132,755 | 133,006 | 169,768 | 217,363 | 202 157 |
| May | 126,966 | 160,500 | 135,965 | 149,792 | 164,901 | 160,701 | 145,624 | 123,065 | 127,144 | 219,532 | 199 215 |
| June | 131,150 | 205,696 | 145,543 | 152,151 | 168,511 | 155,681 | 168,295 | 135,013 | 162,750 | 200,195 | 175 247 |
| 2 nd Quarter | 442,896 | 511,388 | 416,534 | 460,650 | 502,330 | 490,015 | 446,674 | 391,084 | 459,662 | 637,090 | 576 619 |
| July | 144,903 | 301,203 | 136,113 | 166,001 | 184,865 | 175,194 | 147,845 | 157,743 | 188,142 | 236,655 | 203 378 |
| August | 101,734 | 143,945 | 159,270 | 169,209 | 185,390 | 178,002 | 143,736 | 165,530 | 222,798 | 230,385 | 213 779 |
| September | 140,298 | 185,146 | 158,513 | 156,119 | 174,374 | 164,467 | 200,444 | 203,344 | 203,212 | 235,308 | 191 393 |
| 3 rd Quarter | 386,935 | 630,294 | 453,896 | 491,329 | 544,629 | 517,663 | 492,025 | 526,617 | 614,152 | 702,348 | 608 550 |
| October | 158,229 | 188,457 | 153,963 | 163,895 | 170,984 | 170,299 | 188,131 | 140,969 | 215,857 | 237,691 | 176 593 |
| November | 104,362 | 138,095 | 117,820 | 159,823 | 179,793 | 154,557 | 145,042 | 160,160 | 212,009 | 220,919 | 180 463 |
| December | 161,205 | 180,973 | 179,234 | 187,877 | 196,114 | 154,471 | 197,811 | 183,808 | 219,179 | 282,363 | 225 390 |
| 4 th Quarter | 423,796 | 507,525 | 451,017 | 511,595 | 546,891 | 479,327 | 530,984 | 484,937 | 647,045 | 740,973 | 582 446 |
| Total | 1,637,949 | 2,145,370 | 1,731,321 | 1,917,819 | 2,066,519 | 1,976,749 | 1,988,027 | 1,820,057 | 2,200,953 | 2,608,886 | 2 336 288 |

Table 14 : Total Departures by nationality and sex - 2009

| | Male | Female | Total |
|---------------|-----------|---------|-----------|
| Africa | 1 300 781 | 790 138 | 2 090 919 |
| Zimbabwe | 538 468 | 471 505 | 1 009 973 |
| South Africa | 523 484 | 203 447 | 726 931 |
| Zambia | 113 224 | 63 120 | 176 344 |
| Namibia | 80 930 | 34 021 | 114 951 |
| Malawi | 9 784 | 3 404 | 13 188 |
| Lesotho | 3 828 | 3 210 | 7 038 |
| Kenya | 4 575 | 2 432 | 7 007 |
| Swaziland | 4 550 | 1 642 | 6 192 |
| Mozambique | 4 702 | 1 487 | 6 189 |
| Tanzania | 4 079 | 1 458 | 5 537 |
| Nigeria | 2 443 | 806 | 3 249 |
| Uganda | 2 084 | 564 | 2 648 |
| DRC | 1 802 | 406 | 2 208 |
| Mauritius | 1 273 | 625 | 1 898 |
| Ghana | 1 104 | 496 | 1 600 |
| Angola | 782 | 273 | 1 055 |
| Ethiopia | 494 | 272 | 766 |
| Egypt | 454 | 81 | 535 |
| Somalia | 230 | 40 | 270 |
| Cameroon | 212 | 50 | 262 |
| Sierra leone | 160 | 90 | 250 |
| Rwanda | 170 | 52 | 222 |
| Senegal | 161 | 10 | 171 |
| Sudan | 111 | 11 | 122 |
| Eritrea | 110 | 11 | 121 |
| Madagascar | 90 | 31 | 121 |
| Libya | 80 | 40 | 120 |
| Cote d ivoire | 71 | 21 | 92 |
| Algeria | 60 | 30 | 90 |
| Gambia | 73 | 12 | 85 |
| Guinea | 60 | 20 | 80 |
| Reunion | 80 | - | 80 |
| Sychelles | 30 | 40 | 70 |
| Comoro | 30 | 30 | 60 |
| Tunisia | - | 50 | 50 |
| Benin | 30 | 10 | 40 |
| Mali | 40 | - | 40 |
| Other Africa | 923 | 341 | 1 264 |

Table 14: Total Departures by nationality and sex - 2009 - (cont'd)

| | Male | Female | Total |
|------------------|--------|--------|---------|
| America | 22 135 | 24 429 | 46 564 |
| USA | 17 551 | 19 933 | 37 484 |
| Canada | 3 347 | 3 274 | 6 621 |
| Brazil | 329 | 343 | 672 |
| Mexico | 142 | 181 | 323 |
| Argentina | 123 | 188 | 311 |
| Cuba | 150 | 71 | 221 |
| Jamaica | 90 | 131 | 221 |
| Chile | 93 | 43 | 136 |
| Trinidad | 70 | 60 | 130 |
| Colombia | 83 | 34 | 117 |
| Belize | 31 | 34 | 65 |
| Barbados | 31 | 20 | 51 |
| Peru | 11 | 31 | 42 |
| Other America | 84 | 86 | 170 |
| Europe | 75 354 | 61 919 | 137 273 |
| United Kingdom | 26 158 | 19 449 | 45 607 |
| Germany | 13 617 | 12 085 | 25 702 |
| Netherlands | 6 947 | 6 143 | 13 090 |
| France | 5 049 | 3 964 | 9 013 |
| Italy | 3 643 | 2 991 | 6 634 |
| Spain | 2 367 | 2 646 | 5 013 |
| Switzerland | 2 513 | 2 341 | 4 854 |
| Belgiumluxenburg | 2 461 | 1 840 | 4 301 |
| Ireland | 1 567 | 1 560 | 3 127 |
| Denmark | 1 547 | 1 269 | 2 816 |
| Sweden | 1 535 | 1 082 | 2 617 |
| Austria | 1 417 | 943 | 2 360 |
| Portugal | 1 373 | 690 | 2 063 |
| Norway | 872 | 1 149 | 2 021 |
| Russia | 971 | 873 | 1 844 |
| Poland | 490 | 481 | 971 |
| Finland | 375 | 464 | 839 |
| Czechoslovakia | 398 | 296 | 694 |
| Yugoslavia | 420 | 210 | 630 |
| Hungary | 272 | 212 | 484 |
| Greece | 244 | 212 | 456 |
| Bulgaria | 282 | 150 | 432 |
| Romania | 151 | 182 | 333 |
| Slovakia | 121 | 152 | 273 |
| Croatia | 90 | 80 | 170 |
| Ukraine | 110 | 30 | 140 |
| Luxembourg | 63 | 71 | 134 |
| Estonia | 30 | 61 | 91 |

Table 14 : Total Departures by nationality and sex - 2009 - (cont'd)

| | Male | Female | Total |
|-------------------------|------------------|----------------|------------------|
| Lithuania | 40 | 40 | 80 |
| Latvia | 10 | 50 | 60 |
| Other Europe | 221 | 203 | 424 |
| Asia | 29 129 | 14 833 | 43 962 |
| India | 12 449 | 5 446 | 17 895 |
| Japan | 3 187 | 3 922 | 7 109 |
| China | 5 167 | 1 854 | 7 021 |
| Pakistan | 1 902 | 467 | 2 369 |
| Sri lanka | 1 320 | 775 | 2 095 |
| Korea | 922 | 810 | 1 732 |
| Bangladesh | 1 186 | 243 | 1 429 |
| Israel | 1 023 | 247 | 1 270 |
| Singapore | 321 | 210 | 531 |
| Malaysia | 310 | 151 | 461 |
| Philippines | 237 | 125 | 362 |
| Taiwan | 130 | 100 | 230 |
| Lebanon | 162 | 30 | 192 |
| Hong kong | 111 | 63 | 174 |
| Cyprus | 82 | 80 | 162 |
| Turkey | 90 | 72 | 162 |
| Thailand | 60 | 92 | 152 |
| Iran | 103 | 33 | 136 |
| Indonesia | 60 | 11 | 71 |
| Vietnam | 70 | - | 70 |
| Iraq | 40 | 10 | 50 |
| Other Asia | 207 | 92 | 299 |
| Oceania | 7 867 | 7 882 | 15 749 |
| Australia | 6 175 | 6 352 | 12 527 |
| New zealand | 1 692 | 1 500 | 3 192 |
| Other Oceania | - | 30 | 30 |
| Not Stated | 3 840 | 2 022 | 5 864 |
| Total Departures | 1 439 106 | 901 223 | 2 340 331 |

Table 15 : Total Departures by Country of Residence and sex - 2009

| | Male | Female | Total |
|--------------------------|------------------|----------------|------------------|
| Africa | 1 327 006 | 805 602 | 2 132 608 |
| Zimbabwe | 433 859 | 435 577 | 869 436 |
| Republic of South Africa | 503 049 | 181 527 | 684 576 |
| Botswana | 179 939 | 86 189 | 266 128 |
| Zambia | 102 818 | 56 933 | 159 751 |
| Namibia | 83 273 | 35 843 | 119 116 |
| Malawi | 4 517 | 1 140 | 5 657 |
| Lesotho | 2 949 | 2 529 | 5 478 |
| Swaziland | 3 806 | 1 464 | 5 270 |
| Mozambique | 2 900 | 984 | 3 884 |
| Tanzania | 2 645 | 786 | 3 431 |
| Kenya | 1 879 | 902 | 2 781 |
| Democratic Republic of | 1 039 | 144 | 1 183 |
| Uganda | 829 | 242 | 1 071 |
| Angola | 673 | 234 | 907 |
| Nigeria | 422 | 244 | 666 |
| Mauritius | 469 | 184 | 653 |
| Ghana | 335 | 150 | 485 |
| Ethiopia | 204 | 110 | 314 |
| Egypt | 82 | 51 | 133 |
| Rwanda | 101 | 25 | 126 |
| Madagascar | 90 | 30 | 120 |
| Senegal | 102 | 10 | 112 |
| Sudan | 100 | 11 | 111 |
| Reunion | 90 | 20 | 110 |
| Sierra leone | 70 | 20 | 90 |
| Gambia | 63 | 22 | 85 |
| Cameroon | 61 | 20 | 81 |
| Sychelles | 50 | 30 | 80 |
| Cote d ivoire | 61 | - | 61 |
| Eritrea | 60 | - | 60 |
| Tunisia | 40 | 20 | 60 |
| Comoro | 30 | 30 | 60 |
| Somalia | 60 | - | 60 |
| Algeria | 20 | 31 | 51 |
| Other Africa | 321 | 100 | 421 |

Table 15 : Total Departures by Country of Residence and sex - 2009 (cont'd)

| | Male | Female | Total |
|-----------------------|---------------|---------------|----------------|
| America | 18 539 | 21 236 | 39 775 |
| United States America | 15 139 | 17 664 | 32 803 |
| Canada | 2 595 | 2 748 | 5 343 |
| Brazil | 210 | 273 | 483 |
| Mexico | 132 | 160 | 292 |
| Chile | 102 | 73 | 175 |
| Argentina | 63 | 105 | 168 |
| Colombia | 82 | 34 | 116 |
| Jamaica | 20 | 40 | 60 |
| Trinidad | 40 | 20 | 60 |
| Cuba | 30 | 20 | 50 |
| Venezuela | 20 | 20 | 40 |
| Other America | 106 | 79 | 185 |
| Europe | 54 292 | 48 362 | 102 654 |
| United Kingdom | 14 991 | 12 436 | 27 427 |
| Germany | 11 248 | 10 218 | 21 466 |
| Netherlands | 5 756 | 5 591 | 11 347 |
| France | 4 138 | 3 475 | 7 613 |
| Italy | 2 793 | 2 726 | 5 519 |
| Spain | 2 261 | 2 420 | 4 681 |
| Switzerland | 2 490 | 2 014 | 4 504 |
| Belgiumluxenburg | 1 646 | 1 520 | 3 166 |
| Denmark | 1 234 | 1 178 | 2 412 |
| Sweden | 1 262 | 995 | 2 257 |
| Austria | 1 147 | 806 | 1 953 |
| Norway | 737 | 1 050 | 1 787 |
| Ireland | 846 | 887 | 1 733 |
| Russia | 760 | 699 | 1 459 |
| Portugal | 755 | 339 | 1 094 |
| Poland | 319 | 380 | 699 |
| Finland | 315 | 352 | 667 |
| Czechoslovakia | 388 | 235 | 623 |
| Hungary | 231 | 202 | 433 |
| Greece | 165 | 142 | 307 |
| Romania | 120 | 130 | 250 |
| Slovakia | 120 | 120 | 240 |
| Luxembourg | 94 | 82 | 176 |
| Ukraine | 100 | 10 | 110 |
| Yugoslavia | 60 | 50 | 110 |
| Bulgaria | 61 | 40 | 101 |
| Croatia | 20 | 60 | 80 |
| Lithuania | 30 | 40 | 70 |
| Estonia | 30 | 31 | 61 |
| Latvia | 10 | 30 | 40 |

Table 15: Total Departures by Country of Residence and sex - 2009 (cont'd)

| | Male | Female | Total |
|-------------------------|------------------|----------------|------------------|
| Monaco | 20 | 20 | 40 |
| Other Europe | 145 | 84 | 229 |
| Asia | 11 449 | 7 233 | 18 682 |
| Japan | 2 863 | 3 736 | 6 599 |
| India | 3 149 | 976 | 4 125 |
| China | 1 927 | 584 | 2 511 |
| Korea | 601 | 620 | 1 221 |
| Israel | 722 | 217 | 939 |
| Singapore | 303 | 234 | 537 |
| Pakistan | 343 | 72 | 415 |
| Hong kong | 188 | 114 | 302 |
| Sri lanka | 151 | 151 | 302 |
| Malaysia | 220 | 81 | 301 |
| Bangladesh | 210 | 30 | 240 |
| Thailand | 90 | 83 | 173 |
| Taiwan | 80 | 70 | 150 |
| Turkey | 92 | 33 | 125 |
| Lebanon | 72 | 31 | 103 |
| Philipines | 56 | 44 | 100 |
| Cyprus | 43 | 40 | 83 |
| Iran | 70 | 1 | 71 |
| Vietnam | 20 | 30 | 50 |
| Other Asia | 249 | 86 | 335 |
| Oceania | 6 769 | 7 222 | 13 991 |
| Australia | 5 613 | 6 003 | 11 616 |
| New zealand | 1 156 | 1 199 | 2 355 |
| Other Oceania | - | 20 | 20 |
| Not Stated | 21 063 | 11 568 | 32 631 |
| Total Departures | 1 439 118 | 901 223 | 2 340 341 |

Table 16: Total departures by Nationality and Age group - 2009

| | 0-4 | 5-9 | 10-14 | 15-19 | 20-24 | 25-29 | 30-34 | 35-39 | 40-44 | 45-49 | 50-54 | 55-59 | 60-64 | 65+ | Not Stated | Total |
|--------------------|--------------|--------------|--------------|---------------|----------------|----------------|----------------|----------------|----------------|----------------|----------------|---------------|---------------|---------------|--------------|------------------|
| Nationality | | | | | | | | | | | | | | | | |
| Africa | 4 704 | 1 675 | 5 539 | 42 239 | 180 642 | 353 138 | 366 972 | 338 733 | 262 052 | 184 723 | 144 014 | 94 259 | 52 056 | 54 840 | 5 333 | 2 090 919 |
| Zimbabwe | 1 683 | 350 | 1 488 | 14 924 | 101 185 | 220 805 | 214 064 | 178 676 | 116 369 | 62 929 | 45 388 | 25 890 | 12 194 | 11 177 | 2 851 | 1 009 973 |
| South Africa | 2 133 | 1 163 | 2 602 | 18 245 | 45 377 | 72 444 | 89 534 | 101 217 | 101 275 | 87 853 | 76 364 | 56 081 | 33 197 | 37 594 | 1 852 | 726 931 |
| Zambia | 450 | 80 | 541 | 3 199 | 16 874 | 34 996 | 38 343 | 31 472 | 20 822 | 13 674 | 8 106 | 4 010 | 2 075 | 1 362 | 340 | 176 344 |
| Namibia | 285 | 21 | 597 | 4 564 | 12 845 | 17 613 | 15 238 | 16 385 | 14 533 | 12 975 | 8 499 | 5 054 | 2 728 | 3 434 | 180 | 114 951 |
| Malawi | 20 | - | 60 | 220 | 1 060 | 1 521 | 2 062 | 2 512 | 1 833 | 1 443 | 1 223 | 502 | 411 | 291 | 30 | 13 188 |
| Lesotho | 31 | - | 50 | 212 | 562 | 973 | 1 172 | 1 154 | 1 063 | 600 | 445 | 321 | 212 | 223 | 20 | 7 038 |
| Kenya | 20 | - | 50 | 171 | 532 | 612 | 1 216 | 1 349 | 1 186 | 881 | 514 | 272 | 93 | 111 | - | 7 007 |
| Swaziland | 20 | 20 | 21 | 52 | 411 | 1 062 | 1 013 | 1 240 | 780 | 791 | 391 | 171 | 110 | 100 | 10 | 6 192 |
| Mozambique | 10 | 10 | 30 | 60 | 460 | 1 011 | 1 192 | 1 123 | 833 | 631 | 294 | 233 | 220 | 52 | 30 | 6 189 |
| Tanzania | 11 | 11 | 10 | 172 | 491 | 643 | 773 | 1 016 | 644 | 406 | 642 | 493 | 84 | 131 | 10 | 5 537 |
| Nigeria | 10 | - | 20 | 110 | 110 | 178 | 486 | 560 | 571 | 503 | 431 | 80 | 120 | 70 | - | 3 249 |
| Uganda | 10 | 20 | - | 50 | 190 | 342 | 463 | 455 | 411 | 280 | 132 | 161 | 92 | 42 | - | 2 648 |
| DRC | 11 | - | 10 | 50 | 111 | 190 | 392 | 413 | 374 | 272 | 184 | 141 | 10 | 50 | - | 2 208 |
| Mauritius | - | - | 10 | 70 | 162 | 184 | 211 | 210 | 194 | 334 | 250 | 141 | 82 | 50 | - | 1 898 |
| Ghana | 10 | - | - | 60 | 70 | 141 | 180 | 151 | 132 | 243 | 203 | 221 | 137 | 52 | - | 1 600 |
| Angola | - | - | - | 30 | 61 | 70 | 81 | 150 | 170 | 190 | 161 | 90 | 31 | 11 | 10 | 1 055 |
| Ethiopia | - | - | - | - | 21 | 50 | 131 | 150 | 150 | 61 | 92 | 31 | 50 | 30 | - | 766 |
| Egypt | - | - | 20 | - | 40 | 91 | 150 | 70 | 71 | 11 | 31 | 11 | 40 | - | - | 535 |
| Somalia | - | - | - | - | - | 40 | 20 | 50 | 50 | 50 | 20 | - | 30 | 10 | - | 270 |
| Cameroon | - | - | - | 20 | - | 20 | 40 | 50 | 60 | 31 | 20 | 21 | - | - | - | 262 |
| Sierra Leone | - | - | 10 | 10 | - | - | - | 50 | 70 | 30 | 30 | 10 | 30 | 10 | - | 250 |
| Rwanda | - | - | - | - | 10 | 20 | 30 | - | 100 | 22 | 20 | 10 | 10 | - | - | 222 |
| Senegal | - | - | - | - | - | 10 | 30 | - | 20 | 21 | 40 | 50 | - | - | - | 171 |
| Sudan | - | - | - | - | - | - | 20 | 30 | - | 10 | 20 | 12 | 20 | 10 | - | 122 |
| Eritrea | - | - | - | - | 10 | 21 | 20 | 10 | 30 | - | - | 20 | - | 10 | - | 121 |
| Madagascar | - | - | 10 | - | 30 | - | 10 | 10 | 30 | 11 | 20 | - | - | - | - | 121 |
| Libya | - | - | - | - | 10 | - | 20 | 40 | - | 20 | 20 | 10 | - | - | - | 120 |

Table 16: Total departures by Nationality and Age group - 2009 (cont'd)

| | 0-4 | 5-9 | 10-14 | 15-19 | 20-24 | 25-29 | 30-34 | 35-39 | 40-44 | 45-49 | 50-54 | 55-59 | 60-64 | 65+ | Not Stated | Total |
|--------------------|------------|-----------|------------|--------------|--------------|--------------|--------------|--------------|--------------|--------------|--------------|--------------|--------------|--------------|------------|---------------|
| Nationality | | | | | | | | | | | | | | | | |
| Cote d ivoire | - | - | - | - | - | - | - | 10 | 30 | 20 | 12 | 20 | - | - | - | 92 |
| Algeria | - | - | - | - | 10 | 10 | 20 | - | 10 | - | 10 | - | 10 | 20 | - | 90 |
| Gambia | - | - | - | - | - | 10 | 1 | 10 | 10 | 30 | 21 | 3 | - | - | - | 85 |
| Guinea | - | - | - | 10 | - | 30 | - | - | 10 | 10 | 10 | 10 | - | - | - | 80 |
| Reunion | - | - | - | - | 10 | 10 | 10 | 20 | - | 10 | 10 | 10 | - | - | - | 80 |
| Sychelles | - | - | - | - | - | 10 | - | - | 10 | 20 | 10 | 20 | - | - | - | 70 |
| Comoro | - | - | - | - | - | - | - | 10 | 10 | 20 | 10 | 10 | - | - | - | 60 |
| Tunisia | - | - | - | - | - | 20 | - | - | - | - | 10 | 10 | 10 | - | - | 50 |
| Benin | - | - | 10 | - | - | 10 | - | - | - | - | 20 | - | - | - | - | 40 |
| Mali | - | - | - | - | - | - | - | - | 10 | 20 | 10 | - | - | - | - | 40 |
| Other Africa | - | - | - | 10 | - | 1 | 50 | 140 | 191 | 321 | 351 | 140 | 60 | - | - | 1 264 |
| America | 158 | 42 | 238 | 1 620 | 3 849 | 3 993 | 3 743 | 3 092 | 3 256 | 3 771 | 4 333 | 4 492 | 4 793 | 9 116 | 68 | 46 564 |
| USA | 147 | 42 | 188 | 1 295 | 3 000 | 3 102 | 2 884 | 2 220 | 2 584 | 3 056 | 3 332 | 3 579 | 3 987 | 8 021 | 47 | 37 484 |
| Canada | 1 | - | 50 | 218 | 597 | 666 | 555 | 446 | 438 | 479 | 755 | 706 | 720 | 969 | 21 | 6 621 |
| Brazil | - | - | - | 20 | 92 | 82 | 81 | 130 | 71 | 90 | 52 | 34 | 10 | 10 | - | 672 |
| Mexico | - | - | - | 13 | 51 | 26 | 35 | 51 | 22 | 43 | 31 | 30 | 11 | 10 | - | 323 |
| Argentina | - | - | - | - | 31 | 22 | 90 | 84 | 10 | 10 | 20 | 1 | 11 | 32 | - | 311 |
| Cuba | 10 | - | - | - | - | - | 10 | 50 | 41 | 20 | 50 | 20 | 10 | 10 | - | 221 |
| Jamaica | - | - | - | - | 20 | 10 | 20 | 51 | 30 | 20 | 20 | 40 | 10 | - | - | 221 |
| Chile | - | - | - | 20 | 10 | 31 | 11 | 10 | - | - | 10 | 20 | 1 | 23 | - | 136 |
| Trinidad | - | - | - | - | - | 40 | 10 | 10 | 10 | 10 | - | 10 | 10 | 30 | - | 130 |
| Colombia | - | - | - | 14 | 24 | 14 | 11 | 10 | - | 22 | 22 | - | - | - | - | 117 |
| Belize | - | - | - | 10 | 11 | - | 12 | - | 20 | 1 | - | - | 10 | 1 | - | 65 |
| Barbados | - | - | - | 20 | - | - | - | - | - | 20 | - | 10 | 1 | - | - | 51 |
| Peru | - | - | - | - | - | - | 11 | 10 | 10 | - | - | 11 | - | - | - | 42 |
| Other America | - | - | - | 10 | 13 | - | 13 | 20 | 20 | - | 41 | 31 | 12 | 10 | - | 170 |

Table 16: Total departures by Nationality and Age group - 2009 (cont'd)

| | 0-4 | 5-9 | 10-14 | 15-19 | 20-24 | 25-29 | 30-34 | 35-39 | 40-44 | 45-49 | 50-54 | 55-59 | 60-64 | 65+ | Not Stated | Total |
|--------------------|------------|-----------|------------|--------------|--------------|---------------|---------------|---------------|---------------|---------------|---------------|---------------|---------------|---------------|------------|----------------|
| Nationality | | | | | | | | | | | | | | | | |
| Europe | 172 | 33 | 557 | 3 913 | 8 066 | 10 542 | 14 111 | 11 289 | 13 783 | 14 386 | 15 781 | 13 820 | 13 397 | 17 162 | 261 | 137 273 |
| United Kingdom | 41 | 10 | 135 | 1 686 | 2 767 | 3 284 | 3 718 | 3 315 | 4 126 | 4 785 | 5 213 | 4 900 | 5 114 | 6 450 | 63 | 45 607 |
| Germany | 41 | 10 | 42 | 590 | 1 040 | 1 517 | 2 067 | 1 991 | 2 989 | 2 720 | 2 997 | 2 681 | 2 360 | 4 591 | 66 | 25 702 |
| Netherlands | 10 | 1 | 82 | 314 | 1 278 | 1 416 | 1 389 | 772 | 962 | 1 205 | 1 328 | 1 447 | 1 412 | 1 444 | 30 | 13 090 |
| France | 30 | - | 92 | 276 | 404 | 608 | 926 | 824 | 1 022 | 1 082 | 1 232 | 704 | 955 | 858 | - | 9 013 |
| Italy | - | 1 | 21 | 107 | 204 | 444 | 1 308 | 840 | 672 | 743 | 695 | 621 | 427 | 551 | - | 6 634 |
| Spain | - | - | 31 | 123 | 93 | 416 | 1 080 | 597 | 698 | 479 | 659 | 324 | 271 | 232 | 10 | 5 013 |
| Switzerland | 10 | - | 12 | 122 | 306 | 306 | 554 | 426 | 375 | 442 | 562 | 539 | 574 | 614 | 12 | 4 854 |
| Belgiumlux | - | - | 21 | 143 | 271 | 408 | 491 | 445 | 401 | 557 | 594 | 410 | 293 | 267 | - | 4 301 |
| Ireland | 20 | - | - | 191 | 292 | 278 | 252 | 297 | 268 | 363 | 436 | 334 | 182 | 204 | 10 | 3 127 |
| Denmark | - | - | 20 | 80 | 182 | 171 | 181 | 216 | 212 | 224 | 231 | 253 | 392 | 644 | 10 | 2 816 |
| Sweden | 10 | - | - | 71 | 243 | 264 | 243 | 140 | 288 | 321 | 241 | 271 | 214 | 301 | 10 | 2 617 |
| Austria | 10 | 1 | 20 | 51 | 93 | 199 | 237 | 166 | 299 | 189 | 281 | 210 | 252 | 352 | - | 2 360 |
| Portugal | - | - | 30 | 75 | 61 | 162 | 197 | 203 | 202 | 279 | 238 | 342 | 152 | 122 | - | 2 063 |
| Norway | - | - | 1 | 34 | 430 | 253 | 243 | 117 | 131 | 148 | 96 | 195 | 213 | 160 | - | 2 021 |
| Russia | - | - | - | - | 81 | 200 | 306 | 210 | 269 | 261 | 215 | 162 | 80 | 50 | 10 | 1 844 |
| Poland | - | - | 20 | 10 | 50 | 50 | 152 | 163 | 103 | 82 | 187 | 64 | 60 | 20 | 10 | 971 |
| Finland | - | 10 | - | 10 | 60 | 90 | 101 | 62 | 91 | 33 | 111 | 50 | 111 | 90 | 20 | 839 |
| Czechoslovakia | - | - | - | 10 | 10 | 110 | 143 | 102 | 60 | 101 | 13 | 12 | 62 | 71 | - | 694 |
| Yugoslavia | - | - | - | - | 40 | 60 | 130 | 40 | 110 | 60 | 100 | 30 | 60 | - | - | 630 |
| Hungary | - | - | - | - | 30 | 40 | 92 | 91 | 60 | 20 | 41 | 40 | 50 | 20 | - | 484 |
| Greece | - | - | - | - | 10 | - | 50 | 40 | 93 | 20 | 101 | 41 | 50 | 51 | - | 456 |
| Bulgaria | - | - | - | - | 20 | 32 | 80 | 70 | 90 | 40 | 40 | 10 | 20 | 30 | - | 432 |
| Romania | - | - | - | - | 11 | 71 | 30 | 41 | 60 | 20 | 40 | 40 | 10 | 10 | - | 333 |
| Slovakia | - | - | 30 | - | 10 | 31 | 60 | 20 | 22 | 20 | 20 | 30 | 30 | - | - | 273 |
| Croatia | - | - | - | - | 10 | 20 | 10 | 10 | 30 | - | 20 | 50 | 10 | - | 10 | 170 |
| Ukraine | - | - | - | 20 | - | - | 10 | 30 | 30 | 30 | 20 | - | - | - | - | 140 |

Table 16: Total departures by Nationality and Age group - 2009 (cont'd)

| | 0-4 | 5-9 | 10-14 | 15-19 | 20-24 | 25-29 | 30-34 | 35-39 | 40-44 | 45-49 | 50-54 | 55-59 | 60-64 | 65+ | Not Stated | Total |
|--------------------|------------|-----------|------------|------------|--------------|--------------|--------------|--------------|--------------|--------------|--------------|--------------|--------------|--------------|------------|---------------|
| Nationality | | | | | | | | | | | | | | | | |
| Luxembourg | - | - | - | - | - | 10 | 10 | 10 | 30 | 22 | 20 | 20 | 12 | - | - | 134 |
| Estonia | - | - | - | - | - | 11 | 30 | 20 | - | 10 | - | - | 20 | - | - | 91 |
| Lithuania | - | - | - | - | 10 | 20 | - | 10 | 10 | 10 | - | 10 | - | 10 | - | 80 |
| Latvia | - | - | - | - | 10 | - | - | - | 20 | 30 | - | - | - | - | - | 60 |
| Other Europe | - | - | - | - | 50 | 71 | 21 | 21 | 60 | 90 | 50 | 30 | 11 | 20 | - | 424 |
| Asia | 102 | 30 | 243 | 676 | 2 382 | 5 007 | 6 513 | 6 874 | 5 275 | 4 721 | 3 333 | 2 497 | 2 621 | 3 608 | 80 | 43 962 |
| India | 50 | 20 | 122 | 362 | 882 | 2 055 | 3 358 | 3 398 | 2 235 | 1 862 | 1 271 | 953 | 684 | 643 | - | 17 895 |
| Japan | 10 | - | 20 | 42 | 130 | 590 | 672 | 672 | 343 | 324 | 253 | 551 | 1 191 | 2 281 | 30 | 7 109 |
| China | 30 | - | 10 | 110 | 563 | 872 | 892 | 1 233 | 1 106 | 1 072 | 651 | 242 | 130 | 90 | 20 | 7 021 |
| Pakistan | 1 | - | 10 | 20 | 253 | 245 | 519 | 370 | 441 | 211 | 121 | 88 | 40 | 50 | - | 2 369 |
| Sri lanka | 10 | 10 | 20 | 50 | 80 | 250 | 262 | 271 | 254 | 231 | 332 | 101 | 112 | 92 | 10 | 2 085 |
| Korea | - | - | 50 | 40 | 110 | 210 | 171 | 90 | 170 | 250 | 200 | 140 | 161 | 140 | - | 1 732 |
| Bangladesh | - | - | - | - | 110 | 443 | 292 | 222 | 171 | 111 | 40 | 40 | - | - | - | 1 429 |
| Israel | 1 | - | 10 | 20 | 132 | 103 | 101 | 82 | 153 | 144 | 141 | 92 | 121 | 160 | 10 | 1 270 |
| Singapore | - | - | - | 10 | 30 | 30 | 51 | 90 | 80 | 70 | 60 | 70 | 30 | 10 | - | 531 |
| Malaysia | - | - | - | - | 10 | 90 | 10 | 71 | 100 | 80 | 30 | 20 | 20 | 30 | - | 461 |
| Philipines | - | - | - | 1 | 2 | 10 | 11 | 42 | 70 | 83 | 51 | 10 | 41 | 31 | 10 | 362 |
| Taiwan | - | - | - | - | - | - | 10 | 20 | 20 | 50 | 10 | 50 | 30 | 40 | - | 230 |
| Lebanon | - | - | - | - | - | 30 | 22 | 30 | 10 | 80 | 10 | - | 10 | - | - | 192 |
| Hong kong | - | - | 1 | - | - | - | 30 | 41 | 21 | 10 | 40 | 10 | 1 | 20 | - | 174 |
| Cyprus | - | - | - | - | 10 | - | - | 10 | 10 | 22 | 20 | 50 | 20 | 20 | - | 162 |
| Turkey | - | - | - | - | 30 | - | 11 | 30 | 10 | 40 | 20 | 20 | - | 1 | - | 162 |
| Thailand | - | - | - | 21 | 20 | - | 30 | 31 | 20 | 10 | 10 | - | 10 | - | - | 152 |
| Iran | - | - | - | - | - | 42 | 10 | 30 | 11 | 11 | 2 | 20 | 10 | - | - | 136 |
| Indonesia | - | - | - | - | - | - | 10 | 11 | 10 | 20 | 10 | 10 | - | - | - | 71 |
| Vietnam | - | - | - | - | - | - | 30 | 30 | - | 10 | - | - | - | - | - | 70 |

Table 16: Total departures by Nationality and Age group - 2009 (cont'd)

| | 0-4 | 5-9 | 10-14 | 15-19 | 20-24 | 25-29 | 30-34 | 35-39 | 40-44 | 45-49 | 50-54 | 55-59 | 60-64 | 65+ | Not Stated | Total |
|-------------------------|--------------|--------------|--------------|---------------|----------------|----------------|----------------|----------------|----------------|----------------|----------------|----------------|---------------|---------------|--------------|------------------|
| Nationality | | | | | | | | | | | | | | | | |
| Iraq | - | - | - | - | - | - | - | 10 | - | 10 | 10 | 20 | - | - | - | 50 |
| Other Asia | - | - | - | - | 20 | 37 | 21 | 90 | 40 | 20 | 51 | 10 | 10 | - | - | 299 |
| Oceania | | | | | | | | | | | | | | | | |
| Australia | 10 | | 30 | 445 | 805 | 1 602 | 1 548 | 950 | 854 | 1 091 | 1 189 | 1 256 | 1 293 | 1 424 | 30 | 12 527 |
| New zealand | 10 | | - | 90 | 280 | 365 | 390 | 170 | 241 | 294 | 311 | 378 | 349 | 314 | - | 3 192 |
| Other Oceania | - | | - | - | - | - | 10 | - | - | - | 10 | 10 | - | - | - | 30 |
| Not Stated | 13 | 1 | 22 | 96 | 364 | 811 | 812 | 571 | 514 | 677 | 589 | 443 | 382 | 466 | 113 | 5 874 |
| Total Departures | 5 169 | 1 781 | 6 629 | 49 079 | 196 388 | 375 458 | 394 099 | 361 679 | 285 975 | 209 663 | 169 560 | 117 155 | 74 891 | 86 930 | 5 885 | 2 340 341 |

Table 17: Total departures by Country of residence and Age group - 2009

| | 0-4 | 5-9 | 10-14 | 15-19 | 20-24 | 25-29 | 30-34 | 35-39 | 40-44 | 45-49 | 50-54 | 55-59 | 60-64 | 65+ | Not Stated | Total |
|-----------------------------|--------------|--------------|--------------|---------------|----------------|----------------|----------------|----------------|----------------|----------------|----------------|---------------|---------------|---------------|--------------|------------------|
| Country of residence | | | | | | | | | | | | | | | | |
| Africa | 4 599 | 1 664 | 5 889 | 43 324 | 182 246 | 355 173 | 370 113 | 343 488 | 267 359 | 190 170 | 149 743 | 98 427 | 55 947 | 59 143 | 5 313 | 2 132 598 |
| Zimbabwe | 1 402 | 290 | 1 171 | 13 316 | 95 674 | 202 671 | 185 991 | 146 093 | 91 543 | 49 385 | 35 904 | 21 515 | 10 758 | 11 313 | 2 400 | 869 426 |
| Africa | 2 045 | 1 020 | 2 201 | 16 756 | 44 304 | 70 089 | 86 032 | 97 594 | 94 063 | 81 442 | 70 445 | 51 330 | 30 062 | 35 404 | 1 789 | 684 576 |
| Botswana | 348 | 203 | 1 322 | 5 220 | 11 086 | 26 808 | 41 274 | 48 590 | 43 880 | 30 626 | 25 176 | 15 367 | 9 017 | 6 647 | 574 | 266 138 |
| Zambia | 441 | 70 | 400 | 2 796 | 15 962 | 33 304 | 35 690 | 28 432 | 17 792 | 11 302 | 6 454 | 3 371 | 2 045 | 1 392 | 290 | 159 741 |
| Namibia | 282 | 21 | 614 | 4 614 | 12 753 | 17 757 | 15 862 | 17 153 | 15 474 | 13 658 | 8 956 | 5 198 | 3 004 | 3 570 | 200 | 119 116 |
| Malawi | - | 10 | 10 | 80 | 500 | 700 | 940 | 950 | 751 | 661 | 452 | 222 | 221 | 160 | - | 5 657 |
| Lesotho | 30 | - | 50 | 181 | 533 | 822 | 881 | 883 | 683 | 460 | 372 | 220 | 160 | 183 | 20 | 5 478 |
| Swaziland | 20 | 20 | 31 | 71 | 280 | 935 | 802 | 1 060 | 702 | 591 | 397 | 151 | 120 | 80 | 10 | 5 270 |
| Mozambique | 10 | 10 | 20 | 20 | 290 | 691 | 651 | 663 | 501 | 481 | 202 | 175 | 130 | 30 | 10 | 3 884 |
| Tanzania | - | 10 | 10 | 70 | 301 | 443 | 533 | 601 | 452 | 291 | 401 | 216 | 33 | 60 | 10 | 3 431 |
| Kenya | 10 | - | - | 40 | 180 | 340 | 514 | 491 | 451 | 296 | 163 | 114 | 101 | 81 | - | 2 781 |
| DRC | 1 | - | - | 10 | 71 | 140 | 232 | 212 | 181 | 111 | 93 | 81 | 11 | 40 | - | 1 183 |
| Uganda | - | 10 | 10 | 40 | 70 | 171 | 212 | 194 | 100 | 80 | 51 | 70 | 41 | 22 | - | 1 071 |
| Angola | - | - | - | 10 | 60 | 40 | 93 | 100 | 170 | 162 | 130 | 80 | 31 | 21 | 10 | 907 |
| Nigeria | 10 | - | 10 | 20 | 31 | 22 | 61 | 80 | 160 | 131 | 41 | 30 | 30 | 40 | - | 666 |
| Mauritius | - | - | 10 | 30 | 50 | 80 | 91 | 60 | 94 | 56 | 60 | 31 | 61 | 30 | - | 653 |
| Ghana | - | - | - | 30 | 10 | 20 | 80 | 30 | 70 | 61 | 63 | 80 | 31 | 10 | - | 485 |
| Ethiopia | - | - | - | - | 10 | 40 | 50 | 31 | 50 | 21 | 40 | 51 | 11 | 10 | - | 314 |
| Egypt | - | - | 10 | - | 10 | 10 | 20 | 41 | 11 | 1 | 10 | 10 | 10 | - | - | 133 |
| Rwanda | - | - | - | 10 | - | 10 | 12 | - | 41 | 13 | 20 | 10 | 10 | - | - | 126 |
| Madagascar | - | - | 10 | - | 30 | - | - | 10 | 20 | 20 | 20 | - | 10 | - | - | 120 |
| Senegal | - | - | - | - | - | 10 | 10 | - | 10 | 21 | 41 | 20 | - | - | - | 112 |
| Sudan | - | - | - | - | 1 | - | - | 50 | 10 | 10 | - | 10 | 20 | 10 | - | 111 |
| Reunion | - | - | - | - | 10 | 20 | 30 | 20 | 10 | 10 | 10 | - | - | - | - | 110 |
| Sierra leone | - | - | - | - | 10 | - | - | 40 | 10 | 10 | 10 | - | - | 10 | - | 90 |
| Gambia | - | - | - | - | - | 20 | 1 | 10 | 10 | 20 | 21 | 3 | - | - | - | 85 |

Table 17: Total departures by Country of residence and Age group - 2009 (cont'd)

| | 0-4 | 5-9 | 10-14 | 15-19 | 20-24 | 25-29 | 30-34 | 35-39 | 40-44 | 45-49 | 50-54 | 55-59 | 60-64 | 65+ | Not Stated | Total |
|-----------------------------|------------|-----------|------------|--------------|--------------|--------------|--------------|--------------|--------------|--------------|--------------|--------------|--------------|--------------|------------|---------------|
| Country of residence | | | | | | | | | | | | | | | | |
| Cameroon | - | - | - | - | - | - | 20 | 10 | - | 20 | 20 | 11 | - | - | - | 81 |
| Seychelles | - | - | - | - | - | 20 | - | 10 | - | 20 | 10 | 20 | - | - | - | 80 |
| Cote d'Ivoire | - | - | - | - | - | - | - | - | 10 | 20 | 31 | - | - | - | - | 61 |
| Eritrea | - | - | - | - | - | - | - | - | 10 | 20 | 10 | 20 | - | - | - | 60 |
| Tunisia | - | - | - | - | - | - | 10 | - | - | 10 | 30 | - | 10 | - | - | 60 |
| Comoro | - | - | - | - | 10 | - | - | 10 | 10 | 20 | 10 | - | - | - | - | 60 |
| Somalia | - | - | - | - | - | - | 10 | - | 30 | - | - | - | 10 | 10 | - | 60 |
| Algeria | - | - | - | - | 10 | - | 1 | - | 10 | - | 10 | 10 | - | 10 | - | 51 |
| Other Africa | - | - | 10 | 10 | - | 10 | 10 | 70 | 50 | 140 | 90 | 11 | 10 | 10 | - | 421 |
| America | 116 | 22 | 158 | 1 374 | 3 290 | 3 271 | 3 036 | 2 408 | 2 403 | 2 953 | 3 535 | 3 980 | 4 436 | 8 736 | 57 | 39 775 |
| USA | 105 | 22 | 118 | 1 100 | 2 623 | 2 605 | 2 427 | 1 835 | 2 027 | 2 432 | 2 816 | 3 181 | 3 768 | 7 707 | 37 | 32 803 |
| Canada | - | - | 40 | 196 | 485 | 544 | 409 | 377 | 244 | 414 | 512 | 594 | 616 | 892 | 20 | 5 343 |
| Brazil | - | - | - | 10 | 92 | 42 | 62 | 60 | 50 | 32 | 62 | 43 | 10 | 20 | - | 483 |
| Mexico | - | - | - | 13 | 21 | 36 | 35 | 31 | 22 | 33 | 30 | 50 | 11 | 10 | - | 292 |
| Chile | - | - | - | 21 | 10 | 30 | 11 | - | 20 | - | 20 | 30 | - | 33 | - | 175 |
| Argentina | - | - | - | 10 | 21 | - | 20 | 44 | 10 | 10 | - | 1 | 20 | 32 | - | 168 |
| Colombia | - | - | - | 14 | 24 | 4 | 20 | 10 | - | 12 | 22 | 10 | - | - | - | 116 |
| Jamaica | - | - | - | - | - | - | 10 | - | 10 | - | 10 | 30 | - | - | - | 60 |
| Trinidad | - | - | - | - | - | 10 | - | 10 | 10 | - | 10 | - | 10 | 10 | - | 60 |
| Cuba | 10 | - | - | - | - | - | - | 10 | - | - | 10 | 10 | - | 10 | - | 50 |
| Venezuela | - | - | - | - | - | - | 10 | - | - | - | 10 | 10 | - | 10 | - | 40 |
| Other America | 1 | - | - | 10 | 14 | - | 32 | 31 | 10 | 20 | 33 | 21 | 1 | 12 | - | 185 |

Table 17: Total departures by Country of residence and Age group - 2009 (cont'd)

| | 0-4 | 5-9 | 10-14 | 15-19 | 20-24 | 25-29 | 30-34 | 35-39 | 40-44 | 45-49 | 50-54 | 55-59 | 60-64 | 65+ | Not Stated | Total |
|-----------------------------|------------|-----------|------------|--------------|--------------|--------------|---------------|--------------|--------------|---------------|---------------|--------------|--------------|---------------|------------|----------------|
| Country of residence | | | | | | | | | | | | | | | | |
| Europe | 140 | 12 | 383 | 3 168 | 6 904 | 8 920 | 12 290 | 8 452 | 9 773 | 10 217 | 10 808 | 9 427 | 9 466 | 12 438 | 256 | 102 654 |
| UK | 40 | - | 61 | 1 242 | 2 280 | 2 673 | 3 256 | 2 041 | 2 222 | 2 457 | 2 511 | 2 231 | 2 878 | 3 465 | 70 | 27 427 |
| Germany | 10 | - | 42 | 488 | 940 | 1 343 | 1 905 | 1 561 | 2 448 | 2 326 | 2 393 | 2 210 | 1 806 | 3 920 | 74 | 21 466 |
| Netherlands | 10 | 1 | 72 | 306 | 1 156 | 1 303 | 1 306 | 713 | 788 | 1 030 | 1 031 | 1 276 | 1 144 | 1 181 | 30 | 11 347 |
| France | 30 | - | 42 | 276 | 356 | 428 | 782 | 578 | 801 | 878 | 1 093 | 731 | 812 | 796 | 10 | 7 613 |
| Italy | - | 1 | 11 | 96 | 175 | 434 | 1 156 | 728 | 532 | 612 | 551 | 447 | 381 | 395 | - | 5 519 |
| Spain | - | - | 31 | 93 | 74 | 366 | 961 | 617 | 641 | 450 | 629 | 295 | 261 | 253 | 10 | 4 681 |
| Switzerland | 10 | - | 12 | 103 | 295 | 295 | 626 | 448 | 317 | 422 | 470 | 425 | 474 | 595 | 12 | 4 504 |
| Belgiumlux | - | - | 21 | 133 | 249 | 348 | 347 | 323 | 303 | 396 | 400 | 272 | 187 | 187 | - | 3 166 |
| Denmark | - | - | 20 | 90 | 163 | 181 | 171 | 166 | 171 | 203 | 220 | 232 | 352 | 443 | - | 2 412 |
| Sweden | 10 | - | - | 61 | 233 | 223 | 252 | 110 | 183 | 240 | 211 | 250 | 183 | 291 | 10 | 2 257 |
| Austria | 10 | - | 10 | 41 | 72 | 144 | 237 | 117 | 227 | 187 | 246 | 175 | 207 | 280 | - | 1 953 |
| Norway | - | - | 1 | 34 | 370 | 244 | 212 | 107 | 121 | 118 | 77 | 174 | 182 | 147 | - | 1 787 |
| Ireland | 20 | - | - | 120 | 240 | 273 | 163 | 183 | 130 | 80 | 240 | 142 | 71 | 71 | - | 1 733 |
| Russia | - | - | - | - | 91 | 160 | 213 | 169 | 209 | 221 | 184 | 102 | 60 | 40 | 10 | 1 459 |
| Portugal | - | - | 10 | 25 | 30 | 41 | 83 | 122 | 142 | 167 | 132 | 180 | 70 | 92 | - | 1 094 |
| Poland | - | - | 10 | 10 | 30 | 40 | 132 | 122 | 73 | 52 | 106 | 34 | 50 | 30 | 10 | 699 |
| Finland | - | 10 | - | 10 | 40 | 90 | 71 | 32 | 71 | 32 | 70 | 40 | 91 | 90 | 20 | 667 |
| Czechoslovakia | - | - | - | 10 | 10 | 90 | 154 | 61 | 61 | 91 | 23 | 11 | 41 | 71 | - | 623 |
| Hungary | - | - | - | - | 10 | 41 | 71 | 91 | 50 | 10 | 40 | 40 | 60 | 20 | - | 433 |
| Greece | - | - | - | 10 | 10 | - | 30 | 10 | 53 | 32 | 61 | 30 | 40 | 31 | - | 307 |
| Romania | - | - | - | - | 10 | 30 | 30 | 30 | 50 | 10 | 30 | 40 | 10 | 10 | - | 250 |
| Slovakia | - | - | 30 | - | 10 | 30 | 30 | 20 | 20 | 20 | 20 | 30 | 30 | - | - | 240 |

Table 17: Total departures by Country of residence and Age group - 2009 (cont'd)

| | 0-4 | 5-9 | 10-14 | 15-19 | 20-24 | 25-29 | 30-34 | 35-39 | 40-44 | 45-49 | 50-54 | 55-59 | 60-64 | 65+ | Not Stated | Total |
|-----------------------------|-----------|-----|-----------|------------|------------|--------------|--------------|--------------|--------------|--------------|--------------|--------------|--------------|--------------|------------|---------------|
| Country of residence | | | | | | | | | | | | | | | | |
| Luxembourg | - | - | 10 | - | - | 30 | 10 | 12 | 30 | 22 | 20 | 20 | 22 | - | - | 176 |
| Ukraine | - | - | - | 20 | - | - | 10 | 20 | 10 | 20 | 20 | - | 10 | - | - | 110 |
| Yugoslavia | - | - | - | - | - | - | 40 | - | 20 | 30 | 10 | - | 10 | - | - | 110 |
| Bulgaria | - | - | - | - | 10 | 11 | 10 | 30 | 10 | - | 10 | - | 10 | 10 | - | 101 |
| Croatia | - | - | - | - | 10 | 20 | - | 10 | 10 | - | 10 | 20 | - | - | - | 80 |
| Lithuania | - | - | - | - | 10 | 10 | - | 10 | 10 | 10 | - | 10 | - | 10 | - | 70 |
| Estonia | - | - | - | - | - | 11 | 10 | 10 | - | 10 | - | - | 20 | - | - | 61 |
| Latvia | - | - | - | - | - | - | - | - | 20 | 20 | - | - | - | - | - | 40 |
| Monaco | - | - | - | - | - | - | 10 | - | 20 | 10 | - | - | - | - | - | 40 |
| Other Europe | - | - | - | - | 30 | 61 | 12 | 11 | 30 | 61 | - | 10 | 4 | 10 | - | 229 |
| Asia | 41 | | 51 | 318 | 801 | 1 897 | 2 197 | 2 167 | 1 839 | 1 856 | 1 313 | 1 345 | 1 889 | 2 928 | 50 | 18 692 |
| Japan | 10 | | 10 | 42 | 100 | 520 | 590 | 571 | 310 | 311 | 202 | 491 | 1 151 | 2 261 | 30 | 6 599 |
| India | - | | 10 | 120 | 214 | 420 | 731 | 644 | 522 | 491 | 293 | 243 | 233 | 204 | - | 4 125 |
| China | 20 | | - | 20 | 153 | 402 | 323 | 382 | 364 | 352 | 202 | 122 | 111 | 40 | 20 | 2 511 |
| Korea | - | | 10 | 30 | 80 | 160 | 110 | 60 | 80 | 140 | 170 | 110 | 151 | 120 | - | 1 221 |
| Israel | 1 | | 20 | 23 | 132 | 61 | 81 | 61 | 102 | 95 | 91 | 91 | 91 | 90 | - | 939 |
| Singapore | - | | - | 20 | - | 31 | 41 | 91 | 114 | 80 | 40 | 80 | 20 | 20 | - | 537 |
| Pakistan | - | | - | 10 | 30 | 21 | 81 | 60 | 60 | 80 | 30 | 23 | 10 | 10 | - | 415 |
| Hong kong | - | | 1 | 10 | 10 | 20 | 42 | 62 | 32 | 51 | 31 | 10 | 11 | 22 | - | 302 |
| Sri lanka | 10 | | - | 20 | - | 20 | 2 | 30 | 40 | 40 | 50 | 20 | 10 | 60 | - | 302 |
| Malaysia | - | | - | - | 10 | 40 | - | 51 | 80 | 40 | 30 | 10 | 10 | 30 | - | 301 |
| Bangladesh | - | | - | - | 20 | 80 | 40 | 20 | 20 | 20 | 10 | 20 | - | 10 | - | 240 |
| Thailand | - | | - | 11 | 10 | 10 | 30 | 22 | 30 | 20 | 20 | - | 20 | - | - | 173 |
| Taiwan | - | | - | - | - | 10 | 10 | 10 | 10 | 30 | 10 | 20 | 10 | 40 | - | 150 |
| Turkey | - | | - | - | 20 | - | 2 | 41 | - | 21 | 10 | 20 | - | 11 | - | 125 |
| Lebanon | - | | - | - | - | 20 | 31 | - | - | 20 | 1 | 21 | 10 | - | - | 103 |

Table 17: Total departures by Country of residence and Age group - 2009 (cont'd)

| | 0-4 | 5-9 | 10-14 | 15-19 | 20-24 | 25-29 | 30-34 | 35-39 | 40-44 | 45-49 | 50-54 | 55-59 | 60-64 | 65+ | Not Stated | Total |
|-----------------------------|--------------|--------------|--------------|---------------|----------------|----------------|----------------|----------------|----------------|----------------|----------------|----------------|---------------|---------------|--------------|------------------|
| Country of residence | | | | | | | | | | | | | | | | |
| Philippines | - | - | - | 11 | 2 | - | 1 | 1 | 30 | 23 | 11 | 10 | 11 | - | - | 100 |
| Cyprus | - | - | - | - | - | 20 | - | - | 1 | 2 | 20 | 30 | 10 | - | - | 83 |
| Iran | - | - | - | - | - | 10 | 10 | 10 | 1 | - | 20 | 10 | 10 | - | - | 71 |
| Vietnam | - | - | - | - | - | - | 10 | 20 | - | - | 10 | - | - | 10 | - | 50 |
| Other Asia | - | - | - | 1 | 20 | 52 | 62 | 31 | 43 | 40 | 62 | 14 | 20 | - | - | 345 |
| Oceania | 20 | | 30 | 515 | 986 | 1 835 | 1 656 | 1 003 | 975 | 1 110 | 1 247 | 1 481 | 1 480 | 1 623 | 30 | 13 991 |
| Australia | 10 | | 30 | 435 | 826 | 1 525 | 1 351 | 878 | 852 | 928 | 986 | 1 183 | 1 234 | 1 348 | 30 | 11 616 |
| New Zealand | 10 | | - | 80 | 160 | 310 | 305 | 115 | 123 | 182 | 251 | 298 | 246 | 275 | - | 2 355 |
| Other Oceania | - | | - | - | - | - | - | 10 | - | - | 10 | - | - | - | - | 20 |
| Not Stated | 253 | 73 | 118 | 380 | 2 161 | 4 362 | 4 807 | 4 161 | 3 626 | 3 357 | 2 914 | 2 495 | 1 673 | 2 062 | 169 | 32 611 |
| Total Departures | 5 169 | 1 771 | 6 629 | 49 079 | 196 388 | 375 458 | 394 099 | 361 679 | 285 975 | 209 663 | 169 560 | 117 155 | 74 891 | 86 930 | 5 875 | 2 340 321 |

Table 18: Total Departure by Station, mode of travel and Month - 2009

| | January | February | March | April | May | June | July | August | September | October | November | December | Total |
|-------------------|---------|----------|--------|--------|--------|--------|--------|--------|-----------|---------|----------|----------|---------|
| Road | | | | | | | | | | | | | |
| Tlokweng gate | 21 710 | 18 550 | 20 550 | 22 510 | 22 190 | 21 010 | 24 450 | 21 530 | 23 810 | 22 050 | 22 830 | 27 640 | 268 830 |
| Parrshalt | 2 660 | 910 | 1 140 | 2 720 | 1 510 | 1 270 | 1 640 | 1 860 | 1 450 | 1 330 | 1 320 | 1 300 | 19 110 |
| Mamono | 8 280 | 7 010 | 8 250 | 9 260 | 8 360 | 8 250 | 6 660 | 9 110 | 9 000 | 8 130 | 8 010 | 12 880 | 103 200 |
| Sikwane | 1 810 | 1 130 | 1 410 | 1 630 | 1 510 | 1 250 | 1 550 | 1 920 | 1 390 | 1 270 | 1 730 | 1 870 | 18 470 |
| Ramotswa | 2 430 | 1 800 | 2 130 | 2 210 | 2 840 | 2 730 | 3 180 | 2 950 | 3 170 | 2 840 | 2 410 | 3 980 | 32 670 |
| Ramokgwebana road | 59 550 | 50 610 | 61 720 | 74 030 | 73 640 | 69 010 | 75 160 | 73 350 | 60 770 | 55 660 | 56 460 | 99 660 | 809 620 |
| Kazungula road | 8 220 | 6 560 | 8 050 | 9 140 | 9 010 | 8 380 | 11 860 | 11 980 | 10 050 | 10 860 | 6 250 | 10 600 | 110 960 |
| Mohembo | 1 170 | 920 | 1 070 | 1 290 | 1 450 | 1 310 | 2 750 | 1 690 | 2 390 | 2 160 | 1 750 | 1 850 | 19 800 |
| Plaatjan | 580 | 550 | 3 750 | 1 060 | 830 | 690 | 930 | 800 | 640 | 470 | 420 | 700 | 11 420 |
| Pointdrift | 440 | 480 | 640 | 680 | 680 | 750 | 1 000 | 1 430 | 1 000 | 990 | 840 | 530 | 9 460 |
| Ngoma | 3 300 | 2 210 | 2 460 | 3 170 | 3 150 | 3 040 | 4 030 | 4 190 | 3 770 | 6 180 | 2 690 | 3 420 | 41 610 |
| Zanzibar | 221 | 11 | 2 | 162 | 308 | 312 | 436 | 607 | 407 | 151 | 317 | 246 | 3 180 |
| Makopong | 45 | 47 | 74 | 79 | 83 | 67 | 52 | 53 | 188 | 138 | 67 | 160 | 1 053 |
| Martinsdrift | 19 330 | 10 870 | 23 640 | 16 080 | 12 930 | 11 810 | 15 590 | 16 240 | 12 620 | 13 740 | 12 610 | 17 220 | 182 680 |
| Pandamatenge | 53 | 50 | 99 | 181 | 126 | 150 | 179 | 156 | 174 | 136 | 33 | 145 | 1 482 |
| Kazungula ferry | 15 950 | 14 620 | 14 300 | 15 350 | 15 680 | 12 360 | 15 810 | 16 110 | 15 040 | 14 830 | 12 880 | 18 440 | 181 370 |
| Phitshanemolopo | 480 | 320 | 580 | 530 | 420 | 510 | 470 | 690 | 510 | 530 | 460 | 800 | 6 300 |
| Bray | 301 | 178 | 366 | 420 | 308 | 365 | 339 | 383 | 339 | 377 | 290 | 266 | 3 932 |
| Ramatlabama road | 10 250 | 8 340 | 9 700 | 11 190 | 10 850 | 9 350 | 12 170 | 11 090 | 11 280 | 10 080 | 10 280 | 14 370 | 128 950 |
| Pioneer gate | 11 810 | 8 550 | 9 570 | 11 700 | 10 550 | 9 270 | 11 980 | 10 860 | 10 540 | 10 650 | 10 140 | 13 250 | 128 870 |
| Bokspits | 202 | 148 | 143 | 240 | 250 | 194 | 355 | 231 | 189 | 161 | 248 | 262 | 2 623 |
| Tshabobg | 446 | 266 | 284 | 489 | 565 | 423 | 613 | 514 | 483 | 608 | 540 | 581 | 5 812 |
| Kasane | 1 230 | 1 200 | 1 470 | 1 390 | 1 450 | 1 600 | 1 970 | 1 980 | 2 120 | 1 810 | 1 860 | 2 350 | 20 430 |
| Maitengwe | 2 430 | 3 720 | 1 750 | 2 530 | 1 890 | 1 850 | 2 010 | 2 370 | 2 000 | 2 010 | 1 500 | 4 160 | 28 220 |
| Matsiloje | 2 610 | 2 250 | 2 280 | 3 660 | 2 550 | 2 540 | 3 180 | 3 090 | 2 510 | 3 390 | 2 120 | 7 650 | 37 830 |
| Middlepits | 277 | 214 | 235 | 308 | 187 | 184 | 290 | 357 | 203 | 169 | 189 | 291 | 2 904 |

Table 18: Total Departure by Station, mode of travel and Month - 2009 (cont'd)

| | January | February | March | April | May | June | July | August | September | October | November | December | Total |
|----------------------|----------------|----------------|----------------|----------------|----------------|----------------|----------------|----------------|----------------|----------------|----------------|----------------|------------------|
| Two rivers | 106 | 115 | 164 | 261 | 226 | 176 | 271 | 188 | 222 | 229 | 90 | 172 | 2 220 |
| Limpopo valley | 15 | 33 | 78 | 51 | 27 | 27 | 24 | 101 | 96 | 42 | 81 | 57 | 632 |
| Dobe | 88 | 28 | 91 | 79 | - | 198 | 199 | 154 | 120 | 136 | 23 | 166 | 1 282 |
| Kwando | 87 | - | 149 | 200 | - | 364 | 348 | 335 | 261 | 252 | 193 | 47 | 2 236 |
| Shakawe | - | - | - | - | - | - | 1 | - | 16 | - | - | - | 17 |
| Rail | | | | | | | | | | | | | |
| Ramokgwebana Rail | 3 540 | 2 940 | 3 830 | 3 990 | 3 340 | 3 130 | 2 680 | 2 470 | 2 160 | 2 500 | 2 250 | 2 920 | 35 750 |
| Air | | | | | | | | | | | | | |
| Sir Seretse khama | 5 280 | 5 980 | 6 960 | 6 770 | 6 820 | 6 440 | 7 150 | 7 770 | 7 600 | 7 030 | 7 740 | 7 940 | 83 480 |
| Francistown airport | 102 | 139 | 163 | 159 | 182 | 262 | 296 | 366 | 304 | 320 | 301 | 321 | 2 915 |
| Maun airport | 1 170 | 1 050 | 1 460 | 2 140 | 2 470 | 2 040 | 2 250 | 2 910 | 2 680 | 2 840 | 1 980 | 1 330 | 24 320 |
| Selibephikwe airport | 12 | 43 | 36 | 22 | 9 | 24 | 44 | 24 | 49 | 27 | 48 | 10 | 348 |
| Orapa | 2 | 7 | 36 | 6 | - | 2 | - | 10 | 2 | 3 | 10 | 11 | 89 |
| Kasane airport | 328 | 189 | 441 | 398 | 476 | 598 | 780 | 1 096 | 85 | 90 | 61 | 46 | 4 588 |
| Sowa Airport | 73 | 65 | 82 | 55 | 105 | 104 | 123 | 89 | 111 | 88 | 78 | 72 | 1 045 |
| Jwaneng | 14 | 15 | 53 | 48 | 75 | 57 | 67 | 5 | 51 | 112 | 103 | 33 | 633 |
| Total | 186 602 | 152 118 | 189 206 | 206 188 | 197 047 | 182 097 | 212 887 | 211 059 | 189 800 | 184 389 | 171 202 | 257 746 | 2 340 341 |

Table 19 : Total Departures by month and mode of travel - 2009

| | Rail | Road | Air | Other | Not Stated | Total |
|-------------------------|---------------|------------------|----------------|--------------|-------------------|------------------|
| January | 3 550 | 175 965 | 6 996 | 91 | - | 186 602 |
| February | 2 940 | 141 657 | 7 521 | - | - | 152 118 |
| March | 3 830 | 176 035 | 9 339 | 2 | - | 189 206 |
| April | 4 040 | 192 479 | 9 669 | - | - | 206 188 |
| May | 3 390 | 183 462 | 10 164 | 21 | - | 197 037 |
| June | 3 230 | 169 292 | 9 575 | - | - | 182 097 |
| July | 2 730 | 199 101 | 10 850 | 206 | - | 212 887 |
| August | 2 480 | 196 188 | 12 391 | - | - | 211 059 |
| September | 2 190 | 176 294 | 11 018 | 298 | - | 189 800 |
| October | 2 970 | 170 581 | 10 632 | 193 | 3 | 184 379 |
| November | 2 270 | 158 081 | 10 549 | 288 | 14 | 171 202 |
| December | 2 980 | 244 384 | 9 850 | 252 | 280 | 257 746 |
| Total Departures | 36 600 | 2 183 519 | 118 554 | 1 351 | 297 | 2 340 321 |