



OUTPATIENT MENTAL HEALTH DISORDERS

Statistical Brief 2019

Private Bag 0024
Gaborone
Tel: 3671300 **Fax:** 3952201
Toll Free: 0800 600 200

Private Bag F193,
City of Francistown
Tel: 241 5848,
Fax: 241 7540

Private Bag 32
Ghanzi
Tel: 371 5723
Fax: 659 7506

Private Bag 47
Maun
Tel: 371 5716
Fax: 686 4327

E-mail: info@statsbots.org.bw **Website:** <http://www.statsbots.org.bw>



STATISTICS BOTSWANA

Published by

STATISTICS BOTSWANA

GABORONE (HEAD OFFICE)

Private Bag 0024
Gaborone
Tel: 3671300 Fax: 3952201
Toll Free: 0800 600 200

FRANCISTOWN OFFICE

Private Bag F193,
City of Francistown
Tel: 241 5848,
Fax: 241 7540

MAUN OFFICE

Private Bag 47
Maun
Tel: 371 5716
Fax: 686 4327

GHANZI OFFICE

Private Bag 32
Ghanzi
Tel: 371 5723
Fax: 659 7506

E-mail: info@statsbots.org.bw

Website: <http://www.statsbots.org.bw>

NOVEMBER 2023

Copyright © Statistics Botswana 2023



The image features a dark silhouette of a person's head and shoulders in profile, facing left. Inside the head area, there is a complex, tangled mass of white lines representing a brain or neural activity. To the right of the head, the silhouette is fragmented into several sharp, angular pieces, suggesting a cracked or broken skull. The background is a solid, light blue color.

OUTPATIENT MENTAL HEALTH DISORDERS

Statistical Brief 2019

PREFACE

This statistical health report analyzes Outpatient consultations regarding mental disorders in Botswana. The information is usually collected from administrative records of all mental consultations at all health facilities countrywide. The brief states the major mental health consultations by age, sex, health district and type of consultation. In compiling this report, the international Classification of Diseases (ICD 10) was applied to code the main condition.

Statistics Botswana Health Statistics Unit (HSU) provides statistical support to the Ministry of Health & Wellness as an enabler of better national/public health programmes through the collection and dissemination of quality official statistics for evidence-based decision-making, programme monitoring and evaluation.

For more information, contact the Directorate of Stakeholder Relations at 3671300. All Statistics Botswana outputs/publications are available on the website at www.statsbots@org.bw and at the Statistics Botswana Information Resource Centre (Head-Office, Gaborone).

We sincerely thank all stakeholders involved in the formulation of this brief, for their continued support, as we strive to better serve users of our statistical products and services.



.....
Dr Burton S. Mguni
Statistician General
November 2023

Table of contents

Preface	4
1.0 INTRODUCTION	6
2.0 MAIN FINDINGS	6
2.1 Total Out-Patient Mental Health Consultations	6
2.2 Blocks of Mental Health Consultations	7
2.3 Sex and age Structure	8
2.4 Distribution of Mental and Behavioural Disorders by Month	8
2.5 The Ten Leading new and repeat Out-Patient Mental Health Consultations	9
2.6 The tenleading Outpatient Mental Health Consultations by Sex	9
2.7 Leading Mental Health Consultations by Broad Age Groups	10
2.8 Annexes	13

LIST OF TABLES

Table 1: Mental Helath Consultations by Health District.....	6
Table 2: Mental and Behavioral Disorders by Blocks.....	7
Table 3: Distribution of Mental Health and Behavioral Disorders by Month.....	8
Table 4: The Ten Leading Mental Health Consultations, New and Repeat Cases.....	9
Table 5: The Ten Leading Mental Health Conditions For Males and Females.....	10

LIST OF FIGURES

Figure 1: Mental Health Consultations by Age, Group, And Sex.....	8
Figure 2: The Leading Underlying Natural Causes of Death by 0-14 broad Age Group.....	10
Figure 3: The Leading Out-Patient Mental Health Consultations in the 15-24 Broad Age Group.....	11
Figure 4: The leading Out-patient mental health consultations in the 25-44 broad age group.....	11
Figure 5: The leading Out-patient mental health consultations in the 45+ broad age group.....	12

1.0 Introduction

This compilation of this report was based on administrative records from health facilities using the Mental Disorder Outpatient Register (MH1053/Rev 2003) in Botswana. Psychiatric nurses in health facilities for all Outpatient consultations complete the form with new and repeat cases. A new consultation refers to a case where a patient is seeking health services for a condition for the first time. A repeat refers to a case where a patient is getting a service for the same condition for the second time, or several times. An episode of contact with health services for reasons other than illness may be recorded under appropriate main condition.

According to WHO ICD-10 Volume 2, the main condition refers to the condition diagnosed at the end of the episode of health care, primarily responsible for the patient's need for treatment or investigation. If there is more than one such condition, the one held most responsible for the greatest use of resources should be selected.

2.0 Main Findings

2.1. Total Out-Patient Mental Health Consultations, 2019

Thirty one thousand, two hundred and thirty three Outpatient mental disorder consultations were reported by health facilities in 2019. Table 1 indicates that twenty eight thousand, seven hundred and forty one repeat cases were reported as opposed to two thousand, four hundred and ninety two new cases. Majority of mental health consultations were from Lobatse with 15.1% followed by Francistown with 14.9% and Gaborone (13.4%). These top three health districts constituted 43.4% of all mental health consultations in Botswana. The health districts are also a host to the three-referral hospitals of Botswana. However, the number of mental health Outpatient consultations by all other health districts is shown below (Table 1) refers. Annex 2 further shows the mental health consultations by Diagnosis and Health District.

Table 1: Mental Health Consultations by Health District, 2019

District	New	Percent	Repeat	Percent	Grand Total	Percent
Bobirwa	58	0.2	386	1.2	444	1.4
Boteti	102	0.3	439	1.4	541	1.7
Charteshill	0	0.0	4	0.0	4	0.0
Chobe	88	0.3	379	1.2	467	1.5
Francistown	359	1.1	4,285	13.7	4,644	14.9
Gaborone	355	1.1	3,840	12.3	4,195	13.4
Goodhope	46	0.1	1,718	5.5	1,764	5.6
Kgalagadi North	0	0.0	262	0.8	262	0.8
Kgalagadi South	6	0.0	292	0.9	298	1.0
Kgatleng	12	0.0	313	1.0	325	1.0
Kweneng East	37	0.1	1,107	3.5	1,144	3.7
Lobatse	664	2.1	4,058	13.0	4,722	15.1
Mahalapye	9	0.0	24	0.1	33	0.1
Moshupa	0	0.0	44	0.1	44	0.1
Ngamiland	10	0.0	368	1.2	378	1.2
North East	54	0.2	1,314	4.2	1,368	4.4
Palapye	285	0.9	3,148	10.1	3,433	11.0
Selibe Phikwe	42	0.1	898	2.9	940	3.0
Serowe	6	0.0	203	0.6	209	0.7
South East	133	0.4	2,073	6.6	2,206	7.1
Southern	212	0.7	3,268	10.5	3,480	11.1
Tutume	14	0.0	318	1.0	332	1.1
Grand Total	2,492	8.0	28,741	92.0	31,233	100.0

2.2: Blocks of Mental Health Consultations

Table 2 gives the distribution of mental and behavioural disorders by blocks. The ICD-10 classifies mental and behavioural disorders into 11 blocks. Schizophrenia, Schizotypal and delusional disorders were the most common mental disorder block, comprising 55.1% of all Outpatient mental health disorder in 2019. Mood (Affective) Disorders were the second most common main block of mental disorders comprising 16.7%. Episodic and paroxysmal disorders were third with 8.3% of all consultations. Other blocks are in table 2 below.

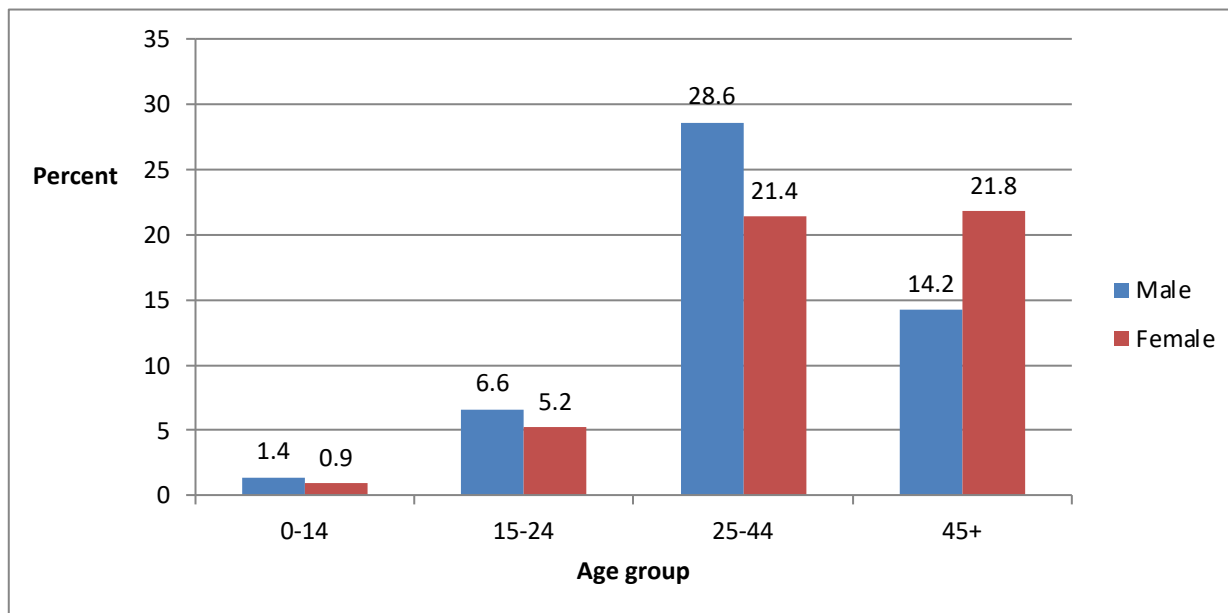
Table 2 Distribution of mental and behavioural disorders by Blocks, 2019

ICD Code	Block	New	Repeat	Total	Percent
B20-B24	Human immunodeficiency virus (HIV) disease	9	182	191	0.6
F00-F09	Organic, including symptomatic, mental disorders	124	1,164	1,288	4.1
F10-F19	Mental and behavioural disorders due to psychoactive substance use	189	1,052	1,241	4.0
F20-F29	Schizophrenia, schizotypal and delusional disorders	433	16,776	17,209	55.1
F30-F39	Mood (affective) disorders	439	4,785	5,224	16.7
F40-F48	Neurotic, stress-related and somatoform disorders	734	1,148	1,882	6.0
F50-F59	Behavioural syndromes associated with physiological disturbances and physical factors	14	49	63	0.2
F60-F69	Disorders of adult personality and behaviour	24	91	115	0.4
F70-F79	Mental retardation	60	394	454	1.5
F80-F89	Disorders of psychological development	11	28	39	0.1
F90-F98	Behavioural and emotional disorders with onset usually occurring in childhood and adolescence	65	331	396	1.3
F99	Unspecified mental disorder	24	59	83	0.3
G40-G47	Episodic and Paroxysmal disorders	39	2,545	2,584	8.3
R40-R46	Symptoms and signs involving cognition, perception, emotional state and behaviour	3	1	4	0.0
X60-X84	Intentional self-harm	74	33	107	0.3
X85-Y09	Assault	1	-	1	0.0
Z00-Z13	Persons encountering health services for examination and investigation	183	86	269	0.9
Z80-Z99	persons with potential health hazards related to family and personal history and certain conditions influencing health status	66	17	83	0.3
Grand Total		2,492	28,741	31,233	100.0

2.3: Sex and age structure of Out-Patient Mental Health Consultations

Figure one shows the percentage distribution of Outpatient mental health consultations by age group and sex. The figure also shows that 50.8% of Outpatient mental health consultations were males while their female counterparts contributed 49.2%. Males were higher than females in all age groups except for 45+ where females (21.8%) outnumbered males with (14.2%). The majority of consultations were in the 25–44 age groups (50.0%) and the least in the 0-14 age group (2.3%). Annex 1 further shows all mental health Outpatient consultation by diagnosis and age group.

Figure 1: Percentage distribution of Outpatient mental Health disorders by age group and sex, 2019



2.4: Distribution of mental and behavioural disorders by month, 2019

Table 3 shows the percentage distribution of mental and behavioural disorders by Month among New and Repeat attendances. The highest number of new cases was reported in January (13.8%), followed by November with 12.4% and August with 12.2%. The highest number of repeat cases was reported November with 11.4% followed by June with 11.3 and August with 11.1. Generally, the highest number of cases was reported in November with 11.5% followed by June with 11.3% and August with 11.2% respectively. Annex 3 further demonstrates the distribution of diagnosis by months

Table 3: Distribution of mental and behavioural by month, 2019

Month	New Cases	Percent	Repeat cases	Percent	Grand Total	Percent
January	344	13.8	3,119	10.9	3,463	11.1
February	96	3.9	1,509	5.3	1,605	5.1
March	199	8.0	2,154	7.5	2,353	7.5
April	253	10.2	3,023	10.5	3,276	10.5
May	223	9.0	2,412	8.4	2,635	8.4
June	285	11.4	3,237	11.3	3,522	11.3
July	100	4.0	1,773	6.2	1,873	6.0
August	303	12.2	3,197	11.1	3,500	11.2
September	171	6.9	2,613	9.1	2,784	8.9
October	127	5.1	1,408	4.9	1,535	4.9
November	309	12.4	3,282	11.4	3,591	11.5
December	82	3.3	1,014	3.5	1,096	3.5
Grand Total	2,492	100.0	28,741	100.0	31,233	100.0

2.5: The Ten leading new and repeat Outpatient mental health consultations, 2019

Table 4 shows the leading Outpatient mental health consultations by new and repeat attendances. The ten leading causes of repeat cases contributed 88.09% of repeat mental health consultations, while the ten leading consultations for new cases contributed 70.55% of all new consultations. Schizophrenia(unspecified) was the leading mental consultation among repeat cases constituting 48.88% of all repeat consultations while Depressive episode(unspecified) was leading amongst new cases with 14.81% of new mental health consultations.

Table 4: The ten leading mental health consultations (New and Repeat) cases, 2019

ICD Code	Row Labels	Repeat cases	Percent	Rank	New cases	Percent	Rank
F20.9	Schizophrenia, unspecified	14,050	48.88	1	176	7.06	5
F32.9	Depressive episode, unspecified	3,047	10.60	2	369	14.81	1
G40.9	Epilepsy, unspecified	2,519	8.76	3	–	–	–
F25.9	Schizoaffective disorder, unspecified	1,761	6.13	4	–	–	–
F31.9	Bipolar affective disorder, unspecified	1,409	4.90	5	–	–	–
F23.9	Acute and transient psychotic disorder, unspecified	730	2.54	6	217	8.71	4
F03	Dementia, unspecified	717	2.49	7	92	3.69	7
F43.2	Adjustment disorders	423	1.47	8	267	10.71	3
F12.1	Mental and behavioural disorders due to use of cannabinoids, harmful use	340	1.18	9	62	2.49	9
F79.9	Unspecified mental retardation without mention of impairment of behaviour	323	1.12	10	0	–	–
F43.0	Acute stress reaction	–	–	–	273	10.96	2
Z00.4	General psychiatric examination, not elsewhere classified	–	–	–	117	4.7	6
X84	Intentional self-harm by unspecified means	–	–	–	62	2.49	9
Z91.5	Personal history of self-harm	–	–	–	66	2.65	8
F40.9	Anxiety disorder, unspecified	–	–	–	57	2.29	10
	Total	25,319	88.09		1,758	70.55	
	Other mental conditions	3,422	11.91		734	29.45	
Grand Total		28,741	100.0		2,492	100.0	

2.6: The ten Leading Out-Patient Mental Health consultations by Sex

Table 4 shows the distribution of the ten leading consultations of Mental Health by sex in 2019. Schizophrenia, (unspecified) was ranked first for both males and females with 54.04% for males and 36.77% for females. Epilepsy (unspecified) was the second leading consultation among males, constituting 9.94% of consultations while Depressive episode (unspecified) was second leading amongst females with 17.38%. Mental and behavioural disorders due to use of cannabinoids(psychotic disorder), Mental and behavioural disorders due to use of cannabinoids(harmful use) and Disturbance of activity and attention were the only top ten consultations among males not in females while Adjustment disorders, Acute stress reaction and Recurrent depressive disorder, current episode mild in females only.

Table 5 : The ten leading mental health consultations for males and females, 2019

ICD Code	Main Condition	Total Males	Percent	Rank	Total Females	Percent	Rank
F20.9	Schizophrenia, unspecified	8,577	54.04	1	5,649	36.77	1
G40.9	Epilepsy, unspecified	1,577	9.94	2	975	6.35	3
F32.9	Depressive episode, unspecified	746	4.7	3	2,670	17.38	2
F25.5	Schizoaffective disorder, unspecified	728	4.59	4	956	6.22	4
F31.9	Bipolar affective disorder, unspecified	537	3.38	5	915	5.96	5
F23.9	Acute and transient psychotic disorder, unspecified	461	2.9	6	486	3.16	8
F12.1	Mental and behavioural disorders due to use of cannabinoids, harmful use	385	2.43	7	-	-	-
F12.5	Mental and behavioural disorders due to use of cannabinoids, psychotic disorder	266	1.68	8	-	-	-
F90.0	Disturbance of activity and attention	264	1.66	9	-	-	-
F03	Dementia, unspecified	242	1.52	10	567	3.69	6
F43.2	Adjustment disorders	-	-	-	477	3.11	7
F43.0	Acute stress reaction	-	-	-	404	2.63	9
F33.0	Recurrent depressive disorder, current episode mild	-	-	-	207	1.35	10
Total		13,783	86.44		13,306	86.62	
Other mental conditions		2,088	13.16		2,056	13.38	
Grand Total		15,871	100.0		15,362	100.0	

2.7: The leading outpatient mental health disorders by broad age groups

Figure 2 shows the leading Outpatient mental health consultations in the 0-14 broad age group. For this age group, Disturbance of activity and attention (36.6%) was the leading mental health consultation, the second was Epilepsy, unspecified (28.7%), and the third was Unspecified mental retardation without mention of impairment of behavior with 5.6%. All the top ten mental consultations among 0-14 broad age group constitute 90.0% of all Outpatient consultations in this age group.

Figure 2: Leading underlying natural causes of death by 0-14 broad age group, 2019

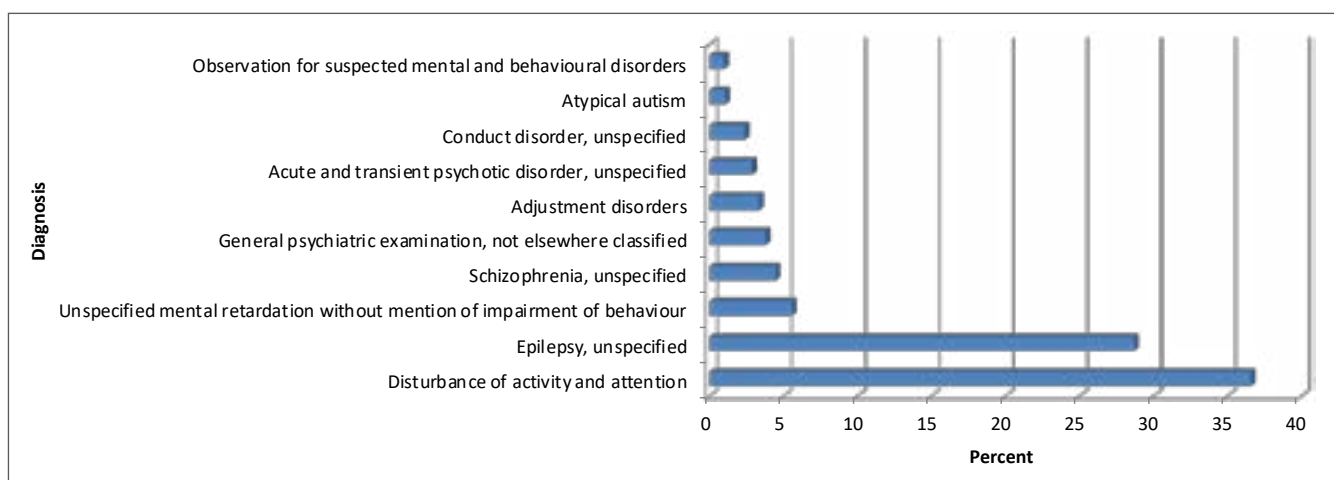


Figure 3 shows the leading mental Health consultations in the 15-24 years broad age group. Schizophrenia, unspecified (23.1%) was the leading cause of Outpatient mental Health consultation followed by Epilepsy, unspecified with 12.7% and the third was Depressive episode, unspecified with (12.2%). All the top ten mental consultations in the 15-24 broad age groups constituted 76.1% of all Outpatient consultations in this age group.

Figure 3: The ten leading Outpatient mental health disorders by 15-24 broad age groups, 2019

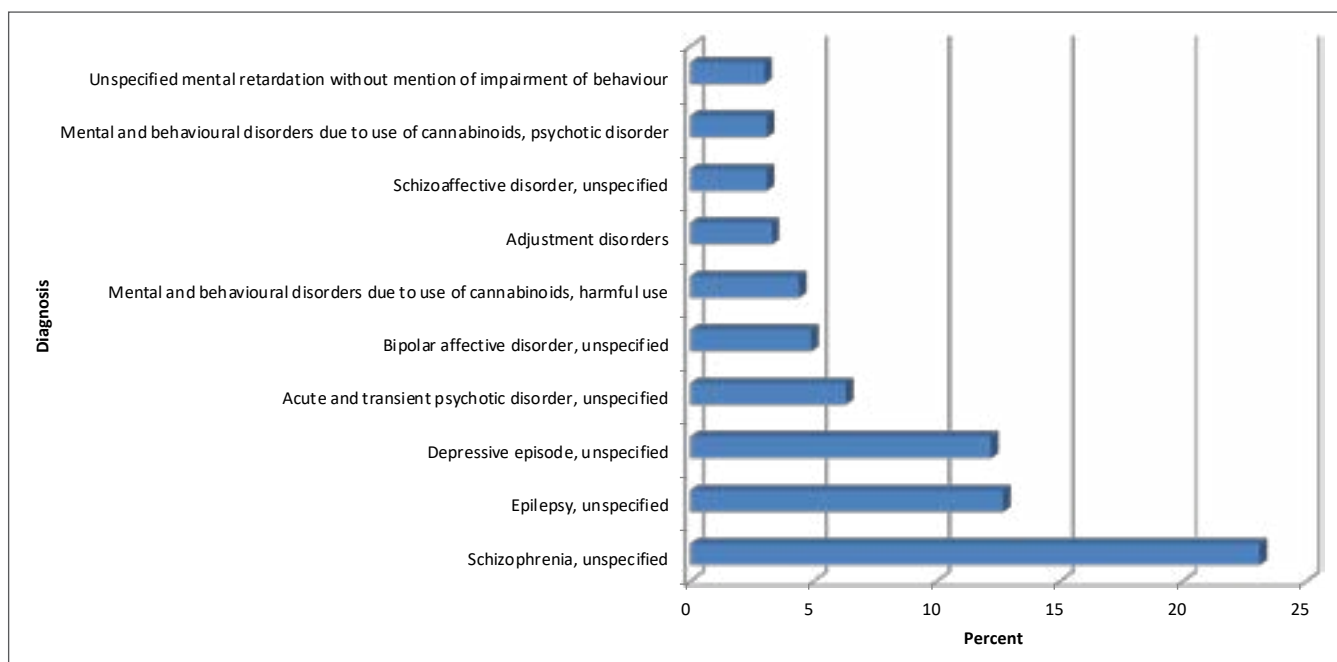


Figure 4 shows the leading Outpatient mental health consultation by 25-44 Years broad age group category. Schizophrenia, Unspecified (46.1%) was the leading mental health consultation, the second was Depressive, unspecified (11.1%), and the third was Epilepsy, unspecified at 7.5%. All the top ten mental consultations among 25-44 broad age group constitute 88.5% of all Outpatient mental health consultations in this age group. Other leading causes of outpatient mental health consultations among this age group are shown below.

Figure 4: The ten leading Outpatient mental health disorders by 25-44 broad age groups, 2019

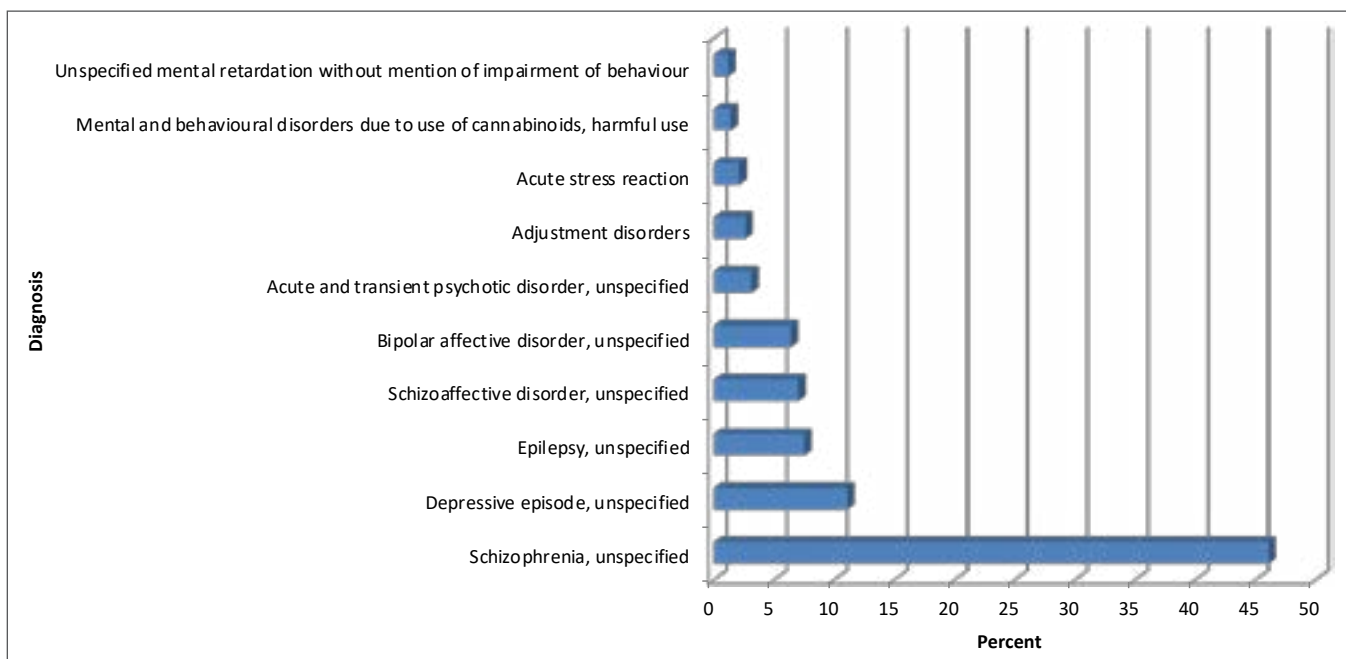
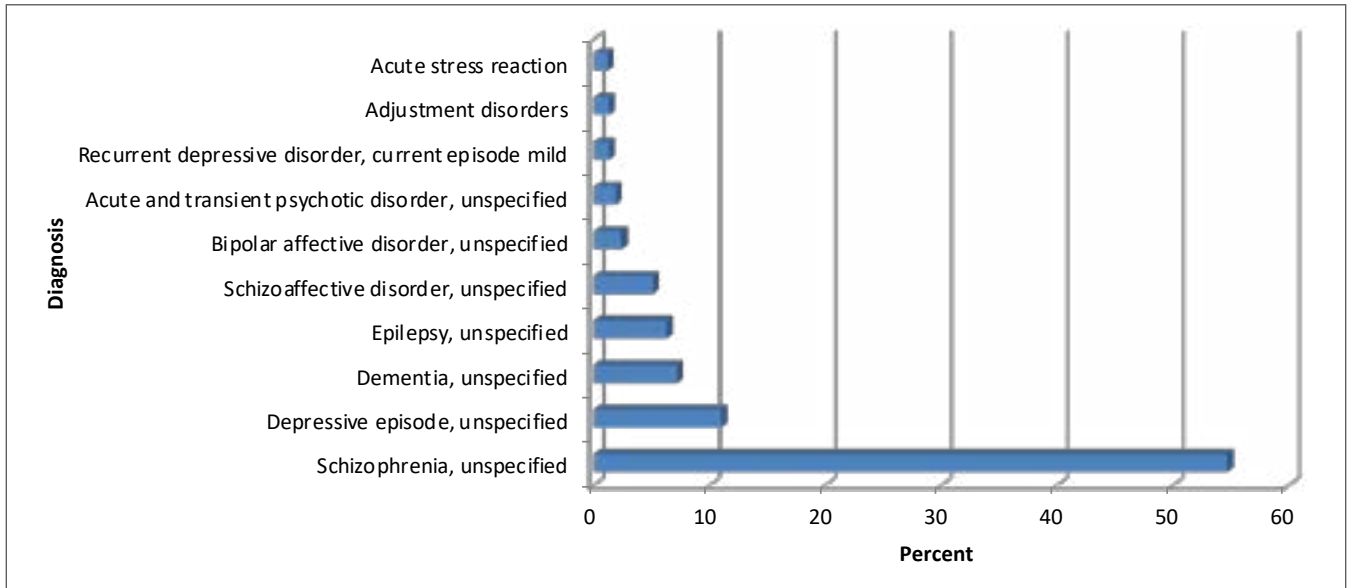


Figure 5 shows the leading Outpatient mental health consultation by 45+ Years broad age group category. Similarly, to age group 25-44 years Schizophrenia, Unspecified (54.7%) was the leading mental health consultation followed by Depressive, unspecified (11.0%). The third was Unspecified Dementia unspecified with 7.2% as opposed to the 25-44 age group where Epilepsy unspecified was third with 7.5%. All the top ten mental consultations among 25-44 broad age group constitute 92.4% of all Outpatient mental health consultations in this age group. Other leading causes of death among this age group are shown below.

Figure 5: The ten leading Outpatient mental health disorders by 45+ broad age groups, 2019



Annexes

Annex1: Mental health attendances by diagnosis; age groups and sex, 2019

Diagnosis	Female				Female Total	Male				Male Total	Grand Total
	0-14	15-24	25-44	45+		0-14	15-24	25-44	45+		
B20-B24 Human immunodeficiency virus (HIV) disease	0	7	52	55	114	0	3	47	27	77	191
B22.0 HIV disease resulting in encephalopathy	0	7	52	55	114	0	3	47	27	77	191
F00-F09 Organic, including symptomatic, mental disorders	1	17	150	704	872	3	43	65	305	416	1288
F00.0 Dementia in Alzheimer's disease with early onset	0	0	7	4	11	0	0	5	2	7	18
F00.1 Dementia in Alzheimer's disease with late onset	0	0	0	3	3	0	0	0	4	4	7
F00.9 Dementia in Alzheimer's disease, unspecified	0	0	0	12	12	0	0	0	3	3	15
F01.9 Vascular dementia, unspecified	0	0	0	5	5	0	0	0	3	3	8
F02.4 Dementia in human immunodeficiency virus(HIV)disease	0	0	1	0	1	0	0	0	0	0	1
F03 Dementia, unspecified	0	0	0	567	567	0	0	0	242	242	809
F06.0 Organic hallucinosis	1	14	91	77	183	2	34	44	43	123	306
F06.2 Organic delusional(Schizophrenia-like) disorder	0	0	9	6	15	0	1	2	2	5	20
F06.3 Organic mood(affective) disorders	0	2	15	4	21	0	3	5	3	11	32
F06.8 Other specified mental disorders due to brain damage and dysfunction and to physical disease	0	0	3	1	4	0	0	0	1	1	5
F06.9 Unspecified mental disorder due to brain damage and dysfunction and to physical disease	0	0	23	14	37	1	4	5	1	11	48
F09 Unspecified organic or symptomatic mental disorder	0	1	1	11	13	0	1	4	1	6	19
F10-F19 Mental and behavioural disorders due to psychoactive substance use	1	27	39	31	98	4	390	638	111	1,143	1,241
F10.0 Mental and behavioural disorders due to use of alcohol, acute intoxication	0	0	3	5	8	0	9	33	24	66	74
F10.1 Mental and behavioural disorders due to use of alcohol, harmful use	1	2	4	7	14	0	16	48	32	96	110
F10.2 Mental and behavioural disorders due to use of alcohol, dependence syndrome	0	0	0	2	2	0	0	0	0	0	2
F10.5 Mental and behavioural disorders due to use of alcohol, psychotic disorder	0	1	8	13	22	0	4	48	23	75	97
F10.9 Mental and behavioural disorders due to use of alcohol, unspecified	0	0	0	0	0	0	1	0	0	1	1

Annex1: Mental health attendances by diagnosis; age groups and sex, 2019 cont...

Diagnosis	Female				Female Total	Male				Male Total	Grand Total
	0-14	15-24	25-44	45+		0-14	15-24	25-44	45+		
F12.1 Mental and behavioural disorders due to use of cannabinoids, harmful use	0	9	7	1	17	3	153	210	19	385	402
F12.2 Mental and behavioural disorders due to use of cannabinoids, dependence syndrome	0	2	3	0	5	0	43	54	1	98	103
F12.5 Mental and behavioural disorders due to use of cannabinoids, psychotic disorder	0	9	10	2	21	0	106	154	6	266	287
F12.9 Mental and behavioural disorders due to use of cannabinoids, unspecified	0	1	0	0	1	0	7	12	0	19	20
F14.0 Mental and behavioural disorders due to use of cocaine, acute intoxication	0	0	0	0	0	0	0	1	0	1	1
F14.1 Mental and behavioural disorders due to use of cocaine, harmful use	0	0	0	0	0	0	1	1	0	2	2
F17.2 Mental and behavioural disorders due to use of tobacco, dependence syndrome	0	0	0	0	0	0	0	1	0	1	1
F18.1 Mental and behavioural disorders due to use of volatile solvents, harmful use	0	0	0	0	0	0	0	1	0	1	1
F19.1 Mental and behavioural disorders due to multiple drug use and use of other psychoactive substances, harmful use	0	0	0	0	0	0	4	3	2	9	9
F19.2 Mental and behavioural disorders due to multiple drug use and use of other psychoactive substances, dependence syndrome	0	0	0	0	0	0	3	8	0	11	11
F19.3 Mental and behavioural disorders due to multiple drug use and use of other psychoactive substances, Withdrawal state	0	0	1	0	1	0	0	0	0	0	1
F19.4 Mental and behavioural disorders due to multiple drug use and use of other psychoactive substances, Withdrawal state with delirium	0	0	0	0	0	0	0	1	0	1	1
F19.5 Mental and behavioural disorders due to multiple drug use and use of other psychoactive substances, psychotic disorder	0	0	0	0	0	0	1	2	0	3	3
F19.9 Mental and behavioural disorders due to multiple drug use and other psychoactive substance use, unspecified	0	3	3	1	7	1	42	61	4	108	115
F20-F29 Schizophrenia, schizotypal and delusional disorders	28	447	2,981	3,861	7,317	26	782	5,930	3,154	9,892	17,209
F20.0 Paranoid schizophrenia	-	1	3	3	7	-	1	3	-	4	11
F20.9 Schizophrenia, unspecified	14	275	2,093	3,267	5,649	18	576	5,106	2,877	8,577	14,226
F21.0 Schizotypal personality disorder	0	0	1	0	1	0	0	0	1	1	2
F22.0 Delusional disorder	0	5	18	10	33	0	0	13	12	25	58

Annex1; Mental health attendances by diagnosis; age groups and sex, 2019 cont...

Diagnosis	Female				Female Total	Male				Male Total	Grand Total
	0-14	15-24	25-44	45+		0-14	15-24	25-44	45+		
F22.9 Persistent delusional disorder, unspecified	0	0	0	0	0	0	0	3	1	4	4
F23.2 Acute schizophrenia-like psychotic disorder	0	0	2	0	2	0	0	0	0	0	2
F23.9 Acute and transient psychotic disorder, unspecified	13	98	236	139	486	8	134	246	73	461	947
F24.0 Induced delusional disorder	0	0	7	2	9	0	0	10	3	13	22
F25.9 Schizoaffective disorder, unspecified	0	57	575	389	1,021	0	60	520	184	764	1,785
F29 Unspecified Non organic Psychosis	1	11	46	51	109	0	11	29	3	43	152
F30-F39 Mood (affective) disorders	5	449	2,005	1,414	3,873	2	207	871	271	1,351	5,224
F30.0 Hypomania	0	0	2	0	2	0	0	2	0	2	4
F30.2 Mania with psychotic symptoms	0	0	0	0	0	0	0	1	0	1	1
F30.9 Manic episode, unspecified	0	0	8	3	11	0	1	5	0	6	17
F31.9 Bipolar affective disorder, unspecified	5	118	613	179	915	1	63	383	90	537	1,452
F32.0 Mild depressive episode	0	2	31	14	47	0	1	14	3	18	65
F32.1 Moderate depressive episode	0	3	1	3	7	0	0	3	0	3	10
F32.3 Severe depressive episode without psychotic symptoms	0	1	4	0	5	0	0	1	1	2	7
F32.9 Depressive episode, unspecified	0	318	1,278	1,074	2,670	1	133	447	165	746	3,416
F33.0 Recurrent depressive disorder, current episode mild	0	6	63	138	207	0	7	13	12	32	239
F33.3 Depressive episode with psychotic symptoms	0	0	0	1	1	0	1	0	0	1	2
F33.9 Recurrent depressive disorder, unspecified	0	0	0	2	2	0	0	1	0	1	3
F34.9 Persistent mood(affective) disorder, unspecified	0	1	4	0	5	0	1	0	0	1	6
F39.9 Unspecified mood(affective)disorder	0	0	1	0	1	0	0	1	0	1	2
F40-F48 Neurotic, stress-related and somatoform disorders	21	244	727	343	1,335	17	108	336	86	547	1,882
F40.0 Panic disorder, with agoraphobia	0	0	0	0	0	0	1	1	1	3	3
F40.9 Phobic anxiety disorder, unspecified	0	7	14	3	24	0	7	6	0	13	37
F41.0 Panic disorder(episodic paroxysmal anxiety)	0	4	8	1	13	0	0	2	0	2	15

Annex1; Mental health attendances by diagnosis; age groups and sex, 2019 cont...

Diagnosis	Female				Female Total	Male				Male Total	Grand Total
	0-14	15-24	25-44	45+		0-14	15-24	25-44	45+		
F41.1 Generalized anxiety disorder	2	7	9	6	24	0	4	8	2	14	38
F41.2 Mixed anxiety and depressive disorder	0	0	1	0	1	0	0	0	0	0	1
F41.9 Anxiety disorder, unspecified	2	30	78	40	150	0	11	43	9	63	213
F42.9 Obsessive-compulsive disorder, unspecified	0	0	0	0	0	0	0	1	0	1	1
F43.1 Post-traumatic stress disorder	4	25	47	17	93	2	6	22	2	32	125
F43.2 Adjustment disorders	10	81	271	115	477	14	39	133	27	213	690
F43.3 Acute stress reaction	0	63	234	107	404	0	31	97	25	153	557
F43.9 Reaction to severe stress, unspecified	0	13	44	34	91	0	4	15	8	27	118
F44.9 Dissociative and conversion disorder, unspecified	2	7	5	1	15	0	1	2	0	3	18
F45.2 Hypochondriacal disorder(Body dysmorphic)	0	0	0	1	1	0	0	1	5	6	7
F45.9 Somatoform disorder, unspecified	1	6	16	18	41	1	4	5	7	17	58
F48.1 Depersonalization-derealisation disorder	0	1	0	0	1	0	0	0	0	0	1
F50-F59 Behavioural syndromes associated with physiological disturbances and physical factors	0	15	46	1	62	0	0	1	0	1	63
F51.0 Nonorganic insomnia	0	0	2	0	2	0	0	0	0	0	2
F51.1 Nonorganic hypersomnia	0	1	0	0	1	0	0	0	0	0	1
F52.1 Sexual aversion and lack of sexual enjoyment	0	0	2	0	2	0	0	0	0	0	2
F53.0 Postpartum depression	0	0	1	0	1	0	0	0	0	0	1
F53.9 Puerperal mental disorder, unspecified	0	14	41	1	56	0	0	1	0	1	57
F60-F69 Disorders of adult personality and behaviour	4	24	17	5	50	1	10	51	3	65	115
F60.0 Paranoid personality disorder	1	1	0	0	2	0	0	0	0	0	2
F60.2 Dissocial personality disorder	2	2	1	0	5	1	4	15	1	21	26
F60.3 Emotionally unstable personality disorder	1	12	7	2	22	0	2	4	0	6	28

Annex1; Mental health attendances by diagnosis; age groups and sex, 2019 cont...

Diagnosis	Female				Female Total	Male				Male Total	Grand Total
	0-14	15-24	25-44	45+		0-14	15-24	25-44	45+		
F60.4 Histrionic personality disorder	0	0	1	1	2	0	1	1	0	2	4
F60.8 Narcissistic personality disorder	0	1	0	0	1	0	0	0	1	1	2
F60.9 Personality Disorder, unspecified	0	6	8	2	16	0	2	23	1	26	42
F63.2 Pathological stealing (Kleptomania)	0	0	0	0	0	0	1	5	0	6	6
F64.9 Gender identity disorder, unspecified	0	1	0	0	1	0	0	2	0	2	3
F66.9 Psychosexual development disorder, unspecified	0	1	0	0	1	0	0	1	0	1	2
F70-F79 Mental retardation	18	54	121	27	220	31	73	106	24	234	454
F70.9 Mild mental retardation without mention of impairment of behaviour	0	5	11	5	21	6	7	15	5	33	54
F71.9 Moderate mental retardation without mention of impairment of behaviour	0	2	4	1	7	1	3	5	5	14	21
F72.9 Severe mental retardation without mention of impairment of behaviour	0	0	0	1	1	1	0	0	0	1	2
F73.9 Profound mental retardation without mention of impairment of behaviour	1	0	0	0	1	0	0	0	0	0	1
F79.9 Unspecified mental retardation without mention of impairment of behaviour	17	47	106	20	190	23	63	86	14	186	376
F80-F89 Disorders of psychological development	7	6	1	2	16	10	7	0	6	23	39
F81.9 Development disorder of scholastic skills	0	0	0	0	0	3	0	0	0	3	3
F84.0 Childhood autism	4	0	0	0	4	0	0	0	0	0	4
F84.1 Atypical autism	3	6	0	0	9	5	6	0	0	11	20
F84.5 Asperger's syndrome	0	0	0	0	0	2	0	0	0	2	2
F84.9 Pervasive development disorder, unspecified	0	0	1	2	3	0	1	0	6	7	10
F90-F98 Behavioural and emotional disorders with onset usually occurring in childhood and adolescence	65	30	1	0	96	220	77	3	0	300	396
F90.0 Disturbance of activity and attention	59	24	1	0	84	203	61	0	0	264	348
F90.9 Hyperkinetic disorder, unspecified	1	0	0	0	1	1	0	1	0	2	3
F91.0 Conduct disorder confined to the family context	0	1	0	0	1	0	0	0	0	0	1
F91.1 Unsocialized conduct disorder	1	0	0	0	1	0	0	0	0	0	1

Annex1; Mental health attendances by diagnosis; age groups and sex, 2019 cont...

Diagnosis	Female				Female Total	Male				Male Total	Grand Total
	0-14	15-24	25-44	45+		0-14	15-24	25-44	45+		
F91.9 Conduct disorder, unspecified	2	4	0	0	6	15	14	1	0	30	36
F98.8 Nonorganic enuresis	2	1	0	0	3	1	2	1	0	4	7
F99 Mental disorder, not otherwise specified	0	13	28	10	51	0	12	9	11	32	83
F99 Unspecified mental disorder	0	13	28	10	51	0	12	9	11	32	83
FG40-G47 Episodic and Paroxysmal disorders	98	183	401	316	998	113	303	772	398	1,586	2,584
G40.9 Epilepsy, unspecified	95	172	398	310	975	110	298	771	398	1,577	2,552
G43.9 Migraine, unspecified	0	2	0	0	2	0	0	0	0	0	2
G47.0 Disorders of initiating and maintaining sleep [insomnias]	0	2	3	5	10	0	2	1	0	3	13
G47.4 Narcolepsy and cataplexy	3	6	0	0	9	0	3	0	0	3	12
G47.9 Sleep disorder, unspecified	0	1	0	1	2	3	0	0	0	3	5
R40-R46 Symptoms and signs involving cognition, perception, emotional state and behaviour	0	0	0	1	1	0	1	2	0	3	4
R44.1 Visual hallucinations	0	0	0	1	1	0	0	0	0	0	1
R45.4 Irritability and anger	0	0	0	0	0	0	0	1	0	1	1
R45.8 Other symptoms and signs involving emotional state(Suicidal ideation tendencies)	0	0	0	0	0	0	1	1	0	2	2
X60-X84 Intentional self-harm	3	43	25	2	73	0	19	14	1	34	107
X60 Intentional self-poisoning by and exposure to nonopioid analgesics, antipyretics and antirheumatics	0	3	2	0	5	0	0	0	0	0	5
X65 Intentional self-poisoning by and exposure to alcohol	0	0	0	0	0	0	2	0	0	2	2
X66 Intentional self-poisoning by and exposure to organic solvents and halogenated hydrocarbons and their vapours	0	0	1	0	1	0	0	0	0	0	1
X70 Intentional self-harm by hanging, strangulation and suffocation	0	3	2	1	6	0	0	3	0	3	9
X71 Intentional self-harm by drowning	0	0	1	0	1	0	0	0	0	0	1
X81 Intentional self-harm by jumping or lying before moving object	0	0	0	0	0	0	1	0	0	1	1
X84 Intentional self-harm by unspecified means	3	37	19	1	60	0	16	11	1	28	88

Annex1; Mental health attendances by diagnosis; age groups and sex, 2019 cont...

Diagnosis	Female				Female Total	Male				Male Total	Grand Total
	0-14	15-24	25-44	45+		0-14	15-24	25-44	45+		
X85-Y09 Assault	0	0	0	0	0	0	1	0	0	1	1
X90 Assault by unspecified chemical or noxious substance	0	0	0	0	0	0	1	0	0	1	1
Z00-Z13 Persons encountering health services for examination and investigation	16	29	63	29	137	21	24	59	25	129	266
Z00.4 General psychiatric examination, not elsewhere classified	12	15	43	20	90	15	18	34	18	35	175
Z03.2 Observation for suspected mental and behavioural disorders	2	14	19	7	42	5	5	20	3	33	75
Z03.9 Observation for suspected disease or condition, unspecified	2	0	1	2	5	1	1	5	4	11	16
Z80-Z99 Persons with potential health hazards related to family and personal history and certain conditions influencing health status	0	28	20	1	49	0	12	24	1	37	86
Z91.5 Personal history of self-harm	0	28	20	1	49	0	12	24	1	37	86
Grand Total	267	1,616	6,677	6,802	15,362	448	2,072	8,928	4,423	15,871	31,233

Annex 2: Mental Health Out-Patient Attendances by Diagnosis and Health District

Diagnosis	Botswana	Boteti	Charaeshill	Chobe	Francistown	Gaborone	Goodhope	Kgalagadi North	Kgalagadi South	Kgatleng	Kweneng East	Lobatse	Mahalapye	Moshupa	Ngamitland	North East	Palapye	Selibe Phikwe	Serowe	South East	Southern	Tutume	Grand Total
B20-B24 Human immunodeficiency virus (HIV) disease	4	21	0	0	8	2	1	0	0	4	26	0	0	0	4	16	48	14	0	7	35	1	191
B22.0 HIV disease resulting in encephalopathy	4	21	0	0	8	2	1	0	0	4	26	0	0	0	4	16	48	14	0	7	35	1	191
F00-F09 Organic, including symptomatic, mental disorders	30	7	0	6	253	119	80	9	9	8	32	274	1	2	12	71	136	32	3	98	98	17	1,288
F00.0 Dementia in Alzheimer's disease with early onset	0	0	0	0	3	3	0	0	0	0	2	4	1	0	0	0	2	0	0	1	2	0	18
F00.1 Dementia in Alzheimer's disease with late onset	5	0	0	0	0	0	0	0	0	0	0	1	0	0	0	0	0	0	0	0	1	0	7
F00.9 Dementia in Alzheimer's disease, unspecified	0	2	0	0	0	0	0	0	0	0	0	10	0	0	0	0	1	0	0	2	0	0	15
F01.9 Vascular dementia, unspecified	0	0	0	0	0	0	0	0	0	0	0	0	0	0	0	0	0	0	0	3	5	0	8
F02.4 Dementia in human immunodeficiency virus(HIV) disease	0	0	0	0	0	0	0	0	0	0	0	0	0	0	0	0	0	0	0	1	0	0	1
F03 Dementia, unspecified	24	5	0	1	128	75	34	0	1	7	24	169	0	2	11	63	114	13	3	73	52	10	809
F06.0 Organic hallucinosis	1	0	0	5	109	35	32	0	0	0	2	70	0	0	1	8	9	0	0	18	12	4	306
F06.2 Organic delusional (Schizophrenia-like) disorder	0	0	0	0	1	0	5	0	0	0	3	7	0	0	0	0	3	0	0	0	1	0	20
F06.3 Organic mood (affective) disorders	0	0	0	0	0	2	0	0	5	0	0	5	0	0	0	0	4	1	0	0	15	0	32
F06.8 Other specified mental disorders due to brain damage and dysfunction and to physical disease	0	0	0	0	0	0	0	0	0	0	0	1	0	0	0	0	1	0	0	0	0	3	5
F06.9 Unspecified mental disorder due to brain damage and dysfunction and to physical disease	0	0	0	0	11	4	4	0	0	0	1	4	0	0	0	0	2	18	0	0	4	0	48
F09 Unspecified organic or symptomatic mental disorder	0	0	0	0	1	0	5	0	3	1	0	3	0	0	0	0	0	0	0	0	6	0	19
F10-F19 Mental and behavioural disorders due to psychoactive substance use	7	23	0	28	234	227	31	3	4	9	37	181	1	0	16	22	157	27	14	51	164	5	1,241
F10.0 Mental and behavioural disorders due to use of alcohol, acute intoxication	0	7	0	0	37	1	1	0	0	0	2	6	0	0	0	1	6	0	0	3	10	0	74
F10.1 Mental and behavioural disorders due to use of alcohol, harmful use	0	5	0	4	23	32	5	0	0	0	0	19	0	0	0	2	3	0	0	10	5	2	110

Annex 2: Mental Health Out-Patient Attendances by Diagnosis and Health District Cont...

Diagnosis	Botlwa	Boteti	Charleshill	Chobe	Francistown	Gaborone	Goodhope	Kgalagadi North	Kgalagadi South	Kgatleng	Kweneng East	Lobatse	Mahlapye	Moshupa	Ngamiland	North East	Palapye	Selibe Phikwe	Serowe	South East	Southern	Tlume	Grand Total
F10.2 Mental and behavioural disorders due to use of alcohol, dependence syndrome	0	0	0	0	0	2	0	0	0	0	0	0	0	0	0	0	0	0	0	0	0	0	2
F10.5 Mental and behavioural disorders due to use of alcohol, psychotic disorder	0	7	0	0	8	6	11	0	1	0	3	11	0	0	0	0	12	5	2	1	29	1	97
F10.9 Mental and behavioural disorders due to use of alcohol, unspecified	0	0	0	0	0	0	0	0	0	0	0	0	0	0	0	0	0	0	0	0	1	0	1
F12.1 Mental and behavioural disorders due to use of cannabinoids, harmful use	7	1	0	22	61	115	3	3	0	7	25	56	1	0	2	7	64	2	2	22	1	1	402
F12.2 Mental and behavioural disorders due to use of cannabinoids, dependence syndrome	0	3	0	0	13	6	0	0	2	1	3	21	0	0	3	7	8	13	0	2	21	0	103
F12.5 Mental and behavioural disorders due to use of cannabinoids, psychotic disorder	0	0	0	0	47	29	10	0	1	1	0	37	0	0	6	5	42	7	8	12	81	1	287
F12.9 Mental and behavioural disorders due to use of cannabinoids, unspecified	0	0	0	0	0	1	0	0	0	0	0	3	0	0	0	0	9	0	0	0	7	0	20
F14.0 Mental and behavioural disorders due to use of cocaine, acute intoxication	0	0	0	0	0	0	0	0	0	0	0	1	0	0	0	0	0	0	0	0	0	0	1
F14.1 Mental and behavioural disorders due to use of cocaine, harmful use	0	0	0	0	1	0	0	0	0	0	0	0	0	0	0	0	0	0	1	0	0	0	2
F17.2 Mental and behavioural disorders due to use of tobacco, dependence syndrome	0	0	0	0	0	0	0	0	0	0	0	0	0	0	0	0	0	0	0	0	1	0	1
F18.1 Mental and behavioural disorders due to use of volatile solvents, harmful use	0	0	0	0	0	0	0	0	0	0	0	0	0	0	0	0	1	0	0	0	0	0	1
F19.1 Mental and behavioral disorders due to multiple drug use and use of other psychoactive substances, harmful use	0	0	0	0	0	0	0	0	0	0	0	2	0	0	0	0	7	0	0	0	0	0	9

Annex 2: Mental Health Out-Patient Attendances by Diagnosis and Health District Cont...

Diagnosis	Botlwa	Boteti	Charleshill	Chobe	Francistown	Gaborone	Gothoppe	Kgalagadi North	Kgalagadi South	Kgatleng	Kweneng East	Lobatse	Mahalapye	Moshupa	Ngamland	North East	Palapye	Selibe Phikwe	Serowe	South East	Southern	Tlume	Grand Total
F19.2 Mental and behavioral disorders due to multiple drug use and use of other psychoactive substances, dependence syndrome	0	0	0	1	9	0	0	0	0	0	0	1	0	0	0	0	0	0	0	0	0	0	11
F19.3 Mental and behavioral disorders due to multiple drug use and use of other psychoactive substances, Withdrawal state	0	0	0	0	0	0	0	0	0	0	0	1	0	0	0	0	0	0	0	0	0	0	1
F19.4 Mental and behavioral disorders due to multiple drug use and use of other psychoactive substances, Withdrawal state with delirium	0	0	0	0	0	0	0	0	0	0	0	1	0	0	0	0	0	0	0	0	0	0	1
F19.5 Mental and behavioral disorders due to multiple drug use and use of other psychoactive substances, psychotic disorder	0	0	0	0	0	0	0	0	0	0	0	3	0	0	0	0	0	0	0	0	0	0	3
F19.9 Mental and behavioral disorders due to multiple drug use and other psychoactive substance use, unspecified	0	0	0	1	35	35	1	0	0	0	4	19	0	0	5	0	5	0	1	1	8	0	115
F20-F29 Schizophrenia, schizotypal and delusional disorders	243	271	4	201	2724	2365	1068	150	213	234	854	2,119	18	37	289	731	2085	626	112	727	1,920	218	17,209
F20.0 Paranoid schizophrenia	0	0	0	0	1	5	0	0	0	0	0	3	0	0	0	0	2	0	0	0	0	0	11
F20.9 Schizophrenia, unspecified	185	206	4	160	1969	1865	926	128	172	196	770	1,756	16	35	261	641	1813	457	89	646	1,742	189	14,226
F21.0 Schizotypal personality disorder	0	0	0	0	1	0	0	0	0	0	0	0	0	0	0	0	0	0	0	0	0	1	2
F22.0 Delusional disorder	0	1	0	2	11	2	0	0	0	0	1	23	0	0	0	0	1	8	0	2	6	1	58
F22.9 Persistent delusional disorder, unspecified	0	2	0	0	0	0	0	0	0	0	0	2	0	0	0	0	0	0	0	0	0	0	4
F23.2 Acute schizophrenia-like psychotic disorder	0	0	0	0	0	0	0	0	0	0	0	1	0	0	0	0	0	0	0	0	1	0	2
F23.9 Acute and transient psychotic disorder, unspecified	26	22	0	23	215	156	73	22	13	13	40	88	2	1	12	26	62	75	9	10	43	16	947
F24.0 Induced delusional disorder	0	0	0	0	20	0	0	0	0	1	0	1	0	0	0	0	0	0	0	0	0	0	22
F25.9 Schizoaffective disorder, unspecified	18	40	0	16	500	245	59	0	28	24	43	237	0	1	15	62	203	78	14	69	125	8	1785
F29 Unspecified Non organic Psychosis	14	0	0	0	7	92	10	0	0	0	0	8	0	0	1	2	4	8	0	0	3	3	152

Annex 2: Mental Health Out-Patient Attendances by Diagnosis and Health District Cont...

Diagnosis	Botlwa	Boteti	Charlehill	Chobe	Francistown	Gaborone	Goodhope	Kgalagadi North	Kgalagadi South	Kgaleeng	Kweneng East	Lobatse	Mahalapye	Moshupa	Ngamitland	North East	Palapye	Selibe Phikwe	Serowe	South East	Southern	Tlume	Grand Total	
F30-F39 Mood (affective) disorders	58	74	0	75	871	1089	46	23	31	28	120	912	2	5	46	96	321	122	38	815	430	22	5,224	
F30.0 Hypomania	0	0	0	0	1	0	0	0	1	0	0	2	0	0	0	0	0	0	0	0	0	0	4	
F30.2 Mania with psychotic symptoms	0	0	0	0	0	0	0	0	0	0	0	0	0	0	0	0	0	1	0	0	0	0	1	
F30.9 Manic episode, unspecified	0	0	0	0	9	1	0	0	0	1	1	2	0	0	0	1	0	1	0	0	1	0	17	
F31.9 Bipolar affective disorder, unspecified	13	2	0	45	276	364	5	9	20	7	19	351	0	0	21	29	93	48	9	89	46	6	1,452	
F32.0 Mild depressive episode	9	0	0	0	0	3	0	0	0	1	0	2	0	0	0	0	3	0	0	34	13	0	65	
F32.1 Moderate depressive episode	3	0	0	0	0	0	0	0	0	0	0	5	0	0	0	1	1	0	0	0	0	0	10	
F32.3 Severe depressive episode without psychotic symptoms	1	0	0	0	1	0	1	0	0	0	0	1	0	0	0	0	2	0	0	0	1	0	7	
F32.9 Depressive episode, unspecified	32	72	0	29	578	718	40	14	9	19	100	549	2	5	25	65	222	72	27	453	369	16	3,416	
F33.0 Recurrent depressive disorder, current episode mild	0	0	0	1	1	2	0	0	0	0	0	0	0	0	0	0	0	0	0	235	0	0	239	
F33.3 Depressive episode with psychotic symptoms	0	0	0	0	0	0	0	0	0	0	0	0	0	0	0	0	0	0	0	2	0	0	2	
F33.9 Recurrent depressive disorder, unspecified	0	0	0	0	0	0	0	0	0	0	0	0	0	0	0	0	0	0	1	2	0	0	3	
F34.9 Persistent mood (affective) disorder, unspecified	0	0	0	0	5	0	0	0	0	0	0	0	0	0	0	0	0	0	1	0	0	0	6	
F39.9 Unspecified mood (affective) disorder	0	0	0	0	0	1	0	0	1	0	0	0	0	0	0	0	0	0	0	0	0	0	0	2
F40-F48 Neurotic, stress-related and somatoform disorders	30	48	0	82	109	133	21	0	3	9	29	642	8	0	2	36	314	8	8	155	241	4	1,882	
F40.0 Panic disorder, with agoraphobia	0	0	0	0	0	1	0	0	0	0	0	2	0	0	0	0	0	0	0	0	0	0	0	3
F40.9 Phobic anxiety disorder, unspecified	0	13	0	0	16	6	0	0	0	0	0	0	0	0	0	0	1	0	1	0	0	0	37	
F41.0 Panic disorder (episodic paroxysmal anxiety)	0	0	0	0	0	1	0	0	0	0	0	11	0	0	0	0	2	0	0	0	1	0	15	
F41.1 Generalized anxiety disorder	0	1	0	5	5	2	0	0	0	0	0	12	0	0	0	0	8	0	0	0	5	0	38	
F41.2 Mixed anxiety and depressive disorder	0	0	0	0	0	0	0	0	0	0	0	1	0	0	0	0	0	0	0	0	0	0	1	
F41.9 Anxiety disorder, unspecified	0	0	0	4	19	32	0	0	0	1	7	41	4	0	0	2	32	3	1	26	41	0	213	
F42.9 Obsessive-compulsive disorder, unspecified	0	0	0	0	0	0	0	0	0	0	0	1	0	0	0	0	0	0	0	0	0	0	1	
F43.0 Acute stress reaction	25	22	0	59	28	19	10	0	2	2	21	62	2	0	0	16	187	2	1	32	65	2	557	

Annex 2: Mental Health Out-Patient Attendances by Diagnosis and Health District Cont...

Diagnosis	Botlwa	Boteti	Charleshill	Chobe	Francistown	Gaborone	Goodhope	Kgalegadi North	Kgalegadi South	Kgatleng	Kweneng East	Lobatse	Mahalapye	Moshupa	Ngamiland	North East	Palapye	Selibe Phikwe	Serowe	South East	Southern	Tlume	Grand Total
F43.1 Post-traumatic stress disorder	2	0	0	3	5	23	2	0	1	1	0	35	1	0	0	0	8	0	0	27	17	0	125
F43.2 Adjustment disorders	3	3	0	2	16	41	2	0	0	5	1	442	0	0	1	2	46	3	2	39	82	0	690
F43.9 Reaction to severe stress, unspecified	0	3	0	0	16	4	7	0	0	0	0	19	1	0	0	16	25	0	0	0	26	1	118
F44.9 Dissociative and conversion disorder, unspecified	0	5	0	3	2	1	0	0	0	0	0	4	0	0	0	0	0	0	0	2	1	0	18
F45.2 Hypochondriacal disorder(Body dysmorphic)	0	0	0	0	0	0	0	0	0	0	0	1	0	0	0	0	1	0	0	2	3	0	7
F45.9 Somatoform disorder, unspecified	0	1	0	6	2	3	0	0	0	0	0	11	0	0	1	0	3	0	3	27	0	1	58
F48.1 Depersonalization-derealization disorder	0	0	0	0	0	0	0	0	0	0	0	0	0	0	0	0	1	0	0	0	0	0	1
F50-F59 Behavioural syndromes associated with physiological disturbances and physical factors	5	2	0	1	8	21	0	0	3	0	0	8	0	0	0	0	9	1	2	1	0	2	63
F51.0 Nonorganic insomnia	1	0	0	0	0	0	0	0	0	0	0	0	0	0	0	0	0	0	1	0	0	0	2
F51.1 Nonorganic hyposomnia	0	0	0	0	1	0	0	0	0	0	0	0	0	0	0	0	0	0	0	0	0	0	1
F52.1 Sexual aversion and lack of sexual enjoyment	0	2	0	0	0	0	0	0	0	0	0	0	0	0	0	0	0	0	0	0	0	0	2
F53.0 Postpartum depression	0	0	0	0	0	0	0	0	0	0	0	1	0	0	0	0	0	0	0	0	0	0	1
F53.9 Puerperal mental disorder, unspecified	4	0	0	1	7	21	0	0	3	0	0	7	0	0	0	0	9	1	1	1	0	2	57
F60-F69 Disorders of adult personality and behaviour	1	1	0	2	25	13	2	0	6	0	0	41	0	0	0	2	12	2	0	1	7	0	115
F60.0 Paranoid personality disorder	0	0	0	0	0	0	0	0	0	0	0	2	0	0	0	0	0	0	0	0	0	0	2
F60.2 Dissocial personality disorder	0	0	0	0	2	1	2	0	3	0	0	8	0	0	0	0	2	1	0	0	7	0	26
F60.3 Emotionally unstable personality disorder	0	0	0	0	2	0	0	0	0	0	0	24	0	0	0	0	2	0	0	0	0	0	28
F60.4 Histrionic personality disorder	0	1	0	1	0	1	0	0	0	0	0	0	0	0	0	0	1	0	0	0	0	0	4
F60.8 Narcissistic personality disorder	0	0	0	0	2	0	0	0	0	0	0	0	0	0	0	0	0	0	0	0	0	0	2
F60.9 Personality Disorder, unspecified	0	0	0	0	19	11	0	0	3	0	0	5	0	0	0	1	2	1	0	0	0	0	42
F63.2 Pathological stealing (Kleptomania)	0	0	0	1	0	0	0	0	0	0	0	0	0	0	0	0	5	0	0	0	0	0	6
F64.9 Gender identity disorder, unspecified	1	0	0	0	0	0	0	0	0	0	0	2	0	0	0	0	0	0	0	0	0	0	3
F66.9 Psychosexual development disorder, unspecified	0	0	0	0	0	0	0	0	0	0	0	0	0	0	0	1	0	0	0	1	0	0	2

Annex 2: Mental Health Out-Patient Attendances by Diagnosis and Health District Cont...

Diagnosis	Botlwa	Boteti	Charleshill	Chobe	Francistown	Gaborone	Goodhope	Kgalegadi North	Kgalegadi South	Kgatleng	Kweneng East	Lobatse	Mahalapye	Moshupa	Ngamiland	North East	Palapye	Selibe Phikwe	Serowe	South East	Southern	Tlume	Grand Total	
F70-F79 Mental retardation	7	12	0	4	132	21	15	0	0	4	0	28	0	0	1	18	89	16	7	27	68	5	454	
F70.9 Mild mental retardation without mention of impairment of behaviour	0	0	0	0	22	1	1	0	0	1	0	1	0	0	0	0	1	16	0	1	10	0	54	
F71.9 Moderate mental retardation without mention of impairment of behaviour	0	0	0	0	17	0	0	0	0	0	0	2	0	0	0	0	2	0	0	0	0	0	21	
F72.9 Severe mental retardation without mention of impairment of behaviour	0	0	0	0	2	0	0	0	0	0	0	0	0	0	0	0	0	0	0	0	0	0	2	
F73.9 Profound mental retardation without mention of impairment of behaviour	0	0	0	0	0	0	0	0	0	0	0	0	0	0	0	0	1	0	0	0	0	0	1	
F79.9 Unspecified mental retardation without mention of impairment of behaviour	7	12	0	4	91	20	14	0	0	3	0	25	0	0	1	18	85	0	7	26	58	5	376	
F80-F89 Disorders of psychological development	1	5	0	0	3	4	0	0	0	0	0	9	0	0	0	0	6	1	0	0	10	0	39	
F81.9 Development disorder of scholastic skills	0	3	0	0	0	0	0	0	0	0	0	0	0	0	0	0	0	0	0	0	0	0	0	3
F84.0 Childhood autism	0	1	0	0	0	0	0	0	0	0	0	0	0	0	0	0	0	0	0	0	3	0	4	
F84.1 Atypical autism	0	1	0	0	3	2	0	0	0	0	0	7	0	0	0	0	6	1	0	0	0	0	20	
F84.5 Asperger's syndrome	1	0	0	0	0	1	0	0	0	0	0	0	0	0	0	0	0	0	0	0	0	0	2	
F84.9 Pervasive development disorder, unspecified	0	0	0	0	0	1	0	0	0	0	0	2	0	0	0	0	0	0	0	0	7	0	10	
F90-F98 Behavioural and emotional disorders with onset usually occurring in childhood and adolescence	5	12	0	8	119	33	15	0	13	0	0	135	0	0	0	3	22	5	0	3	23	0	396	
F90.0 Disturbance of activity and attention	3	10	0	8	119	31	10	0	3	0	0	126	0	0	0	2	17	3	0	2	14	0	348	
F90.9 Hyperkinetic disorder, unspecified	0	0	0	0	0	0	0	0	0	0	0	2	0	0	0	0	1	0	0	0	0	0	3	
F91.0 Conduct disorder confined to the family context	1	0	0	0	0	0	0	0	0	0	0	0	0	0	0	0	0	0	0	0	0	0	1	
F91.1 Unsocialized conduct disorder	0	1	0	0	0	0	0	0	0	0	0	0	0	0	0	0	0	0	0	0	0	0	1	
F91.9 Conduct disorder, unspecified	0	1	0	0	0	1	5	0	10	0	0	7	0	0	0	0	2	0	0	1	9	0	36	
F98.0 Nonorganic enuresis	1	0	0	0	0	1	0	0	0	0	0	0	0	0	0	1	2	2	0	0	0	0	7	
F99 Unspecified mental disorder	0	0	0	0	1	0	0	0	0	0	9	6	1	0	3	36	0	0	0	0	25	2	83	
F99 Mental disorder, not otherwise specified	0	0	0	0	1	0	0	0	0	0	9	6	1	0	3	36	0	0	0	0	25	2	83	
G40-G47 Episodic and Paroxysmal disorders	42	23	0	26	132	54	460	86	15	27	25	343	1	0	5	327	178	59	25	317	384	55	2,584	
G40.9 Epilepsy, unspecified	42	23	0	26	132	46	460	86	15	27	25	326	1	0	5	327	177	54	25	316	384	55	2,552	
G43.9 Migraine, unspecified	0	0	0	0	0	0	0	0	0	0	0	2	0	0	0	0	0	0	0	0	0	0	2	

Diagnosis	Bobirwa	Boteti	Charleshill	Chobe	Francistown	Gaborone	Goodhope	Kgalagadi North	Kgalagadi South	Kgatleng	Kweneng East	Lobatse	Mahalapye	Moshupa	Ngamitland	North East	Palapye	Selibe Phikwe	Serowe	South East	Southern	Tlume	Grand Total
G47.0 Disorders of initiating and maintaining sleep [insomnias]	0	0	0	0	0	7	0	0	0	0	0	4	0	0	0	0	1	1	0	0	0	0	13
G47.4 Narcolepsy and cataplexy	0	0	0	0	0	0	0	0	0	0	0	11	0	0	0	0	0	0	0	1	0	0	12
G47.9 Sleep disorder, unspecified	0	0	0	0	0	1	0	0	0	0	0	0	0	0	0	0	0	4	0	0	0	0	5
R40-R46 Symptoms and signs involving cognition, perception, emotional state and behaviour	0	0	0	1	0	0	0	0	0	0	0	2	0	0	0	1	0	0	0	0	0	0	4
R44.1 Visual hallucinations	0	0	0	0	0	0	0	0	0	0	0	1	0	0	0	0	0	0	0	0	0	0	1
R45.4 Irritability and anger	0	0	0	0	0	0	0	0	0	0	0	1	0	0	0	0	0	0	0	0	0	0	1
R45.8 Other symptoms and signs involving emotional state(Suicidal ideation,tendencies)	0	0	0	1	0	0	0	0	0	0	0	0	0	0	0	1	0	0	0	0	0	0	2
X60-X84 Intentional self-harm	0	9	0	2	2	13	13	0	0	0	0	1	0	0	0	6	34	0	0	1	25	1	107
X60 Intentional self-poisoning by and exposure to nonopioid analgesic, antipyretics and antirheumatics	0	0	0	0	0	0	0	0	0	0	0	0	0	0	0	0	0	0	0	0	5	0	5
X65 Intentional self-poisoning by and exposure to alcohol	0	0	0	0	0	0	0	0	0	0	0	0	0	0	0	0	0	0	0	0	2	0	2
X66 Intentional self-poisoning by and exposure to organic solvents and halogenated hydrocarbons and their vapours	0	0	0	0	0	0	0	0	0	0	0	0	0	0	0	0	0	0	0	0	1	0	1
X70 Intentional self-harm by hanging, strangulation and suffocation	0	2	0	0	0	1	4	0	0	0	0	0	0	0	0	0	0	0	0	0	2	0	9
X71 Intentional self-harm by drowning	0	1	0	0	0	0	0	0	0	0	0	0	0	0	0	0	0	0	0	0	0	0	1
X81 Intentional self-harm by jumping or lying before moving object	0	0	0	0	0	0	1	0	0	0	0	0	0	0	0	0	0	0	0	0	0	0	1
X84 Intentional self-harm by unspecified means	0	6	0	2	2	12	8	0	0	0	0	1	0	0	0	6	34	0	0	1	15	1	88
X85-Y09 Assault	0	0	0	0	0	0	0	0	0	0	0	1	0	0	0	0	0	0	0	0	0	0	1
X90 Assault by unspecified chemical or noxious substance	0	0	0	0	0	0	0	0	0	0	0	1	0	0	0	0	0	0	0	0	0	0	1
Z00.4 General psychiatric examination, not elsewhere classified	9	32	0	25	0	36	0	0	1	1	11	8	1	0	0	0	9	10	0	3	29	0	175

Annex 2: Mental Health Out-Patient Attendances by Diagnosis and Health District Cont...

Diagnosis	Bobirwa	Boteti	Charleshill	Chobe	Francistown	Gaborone	Goodhope	Kgalagadi North	Kgalagadi South	Kgatleng	Kweneng East	Lobatse	Mahalapye	Moshupa	Ngamitland	North East	Palapye	Selibe Phikwe	Serowe	South East	Southern	Tlume	Grand Total
Z03.2 Observation for suspected mental and behavioural disorders	0	0	0	0	23	45	0	0	0	0	0	1	0	0	0	1	0	0	0	0	5	0	75
Z03.9 Observation for suspected disease or condition, unspecified	0	0	0	0	0	0	0	0	0	0	0	0	0	0	0	0	0	15	0	0	1	0	16
Z91.5 Personal history of self-harm	2	1	0	6	0	20	12	0	0	1	1	11	0	0	0	2	13	2	0	0	15	0	86
Grand Total	444	541	4	467	4,644	4,195	1,764	262	298	325	1,144	4,722	33	44	378	1,368	3,433	940	209	2,206	3,480	332	31,233

Annex 3: Mental Health Out-Patient Attendances by Diagnosis and Month , 2019

Diagnosis	Jan	Feb	Mar	Apr	May	Jun	July	Aug	Sept	Oct	Nov	Dec	Grand Total
B20-B24 Human immunodeficiency virus (HIV) disease	13	11	15	19	19	12	17	22	24	13	13	13	191
B22.0 HIV disease resulting in encephalopathy	13	11	15	19	19	12	17	22	24	13	13	13	191
F00-F09 Organic, including symptomatic, mental disorders	148	62	95	146	121	148	76	141	103	66	134	48	1,288
F00.0 Dementia in Alzheimer's disease with early onset	6	0	2	1	0	2	0	1	1	0	4	1	18
F00.1 Dementia in Alzheimer's disease with late onset	0	0	2	0	1	0	0	0	0	1	0	3	7
F00.9 Dementia in Alzheimer's disease, unspecified	0	0	0	0	0	1	1	0	0	0	0	13	15
F01.9 Vascular dementia, unspecified	0	1	1	0	0	2	0	0	1	3	0	0	8
F02.4 Dementia in human immunodeficiency virus(HIV)disease	0	0	0	0	0	1	0	0	0	0	0	0	1
F03 Dementia, unspecified	105	40	58	84	78	84	48	97	68	49	79	19	809
F06.0 Organic hallucinosis	24	0	18	45	38	55	18	41	24	2	41	0	306
F06.2 Organic delusional(Schizophrenia-like) disorder	6	2	1	0	3	0	2	0	0	1	3	2	20
F06.3 Organic mood(affective) disorders	1	3	4	4	0	1	1	0	3	4	6	5	32
F06.8 Other specified mental disorders due to brain damage and dysfunction and to physical disease	0	0	0	0	0	0	0	0	0	5	0	0	5
F06.9 Unspecified mental disorder due to brain damage and dysfunction and to physical disease	5	15	7	8	0	0	6	1	0	1	0	5	48
F09 Unspecified organic or symptomatic mental disorder	1	1	2	4	1	2	0	1	6	0	1	0	19
F10-F19 Mental and behavioural disorders due to psychoactive substance use	146	71	80	109	111	141	67	146	109	60	157	44	1,241
F10.0 Mental and behavioural disorders due to use of alcohol, acute intoxication	4	25	1	0	2	1	4	20	11	0	6	0	74
F10.1 Mental and behavioural disorders due to use of alcohol, harmful use	7	0	9	10	6	28	5	10	4	8	20	3	110
F10.2 Mental and behavioural disorders due to use of alcohol, dependence syndrome	0	0	0	0	0	0	0	0	0	0	1	1	2
F10.5 Mental and behavioural disorders due to use of alcohol, psychotic disorder	13	5	7	3	12	2	7	7	12	8	8	13	97
F10.9 Mental and behavioural disorders due to use of alcohol, unspecified	0	0	0	0	0	0	0	0	0	1	0	0	1
F12.1 Mental and behavioural disorders due to use of cannabinoids, harmful use	48	17	31	42	44	29	8	45	44	17	71	6	402
F12.2 Mental and behavioural disorders due to use of cannabinoids, dependence syndrome	6	7	4	23	2	21	11	26	0	0	1	2	103
F12.5 Mental and behavioural disorders due to use of cannabinoids, psychotic disorder	52	14	16	16	36	17	18	35	36	16	31	0	287

Annex 3: Mental Health Out-Patient Attendances by Diagnosis and Month , 2019 cont...

Diagnosis	Jan	Feb	Mar	Apr	May	Jun	July	Aug	Sept	Oct	Nov	Dec	Grand Total
F12.9 Mental and behavioural disorders due to use of cannabinoids, unspecified	0	0	4	0	0	0	0	1	0	3	1	11	20
F14.0 Mental and behavioural disorders due to use of cocaine, acute intoxication	0	0	0	0	0	0	0	1	0	0	0	0	1
F14.1 Mental and behavioural disorders due to use of cocaine, harmful use	1	0	0	0	0	0	1	0	0	0	0	0	2
F17.2 Mental and behavioural disorders due to use of tobacco, dependence syndrome	0	0	0	0	0	0	0	1	0	0	0	0	1
F18.1 Mental and behavioural disorders due to use of volatile solvents, harmful use	0	0	1	0	0	0	0	0	0	0	0	0	1
F19.1 Mental and behavioural disorders due to multiple drug use and use of other psychoactive substances, harmful use	0	0	0	0	0	0	0	0	0	5	0	4	9
F19.2 Mental and behavioural disorders due to multiple drug use and use of other psychoactive substances, dependence syndrome	0	0	0	11	0	0	0	0	0	0	0	0	11
F19.3 Mental and behavioural disorders due to multiple drug use and use of other psychoactive substances, Withdrawal state	0	0	0	0	0	0	0	0	0	0	0	1	1
F19.4 Mental and behavioural disorders due to multiple drug use and use of other psychoactive substances, Withdrawal state with delirium	0	0	0	0	0	0	0	0	0	0	1	0	1
F19.5 Mental and behavioural disorders due to multiple drug use and use of other psychoactive substances, psychotic disorder	0	0	0	0	0	0	0	0	0	0	0	3	3
F19.9 Mental and behavioural disorders due to multiple drug use and other psychoactive substance use, unspecified	15	3	7	4	9	43	13	0	2	2	17	0	115
F20-F29 Schizophrenia, schizotypal and delusional disorders	1,882	1,021	1,265	1,795	1,393	1,944	1,054	1,796	1,559	876	1,986	638	17,209
F20.0 Paranoid schizophrenia	0	0	1	1	1	5	0	1	0	0	2	0	11
F20.9 Schizophrenia, unspecified	1,507	819	1,100	1,464	1,172	1,582	880	1,472	1,288	737	1,642	563	14,226
F21.0 Schizotypal personality disorder	0	0	0	1	0	0	0	0	0	0	1	0	2
F22.0 Delusional disorder	5	2	3	9	7	6	6	8	2	2	5	3	58
F22.9 Persistent delusional disorder, unspecified	0	0	0	0	1	0	0	0	0	2	0	1	4
F23.2 Acute schizophrenia-like psychotic disorder	0	0	1	0	0	0	1	0	0	0	0	0	2
F23.9 Acute and transient psychotic disorder, unspecified	129	85	60	104	69	123	49	94	68	44	95	27	947
F24.0 Induced delusional disorder	0	6	1	3	2	1	1	1	3	0	4	0	22
F25.5 Schizoaffective disorder, unspecified	207	98	81	181	135	198	105	200	160	67	213	39	1,684
F25.9 Schizoaffective disorder, unspecified	13	9	11	12	3	8	10	2	9	14	7	3	101
F29 Unspecified Non organic Psychosis	21	2	7	20	3	21	2	18	29	10	17	2	152

Annex 3: Mental Health Out-Patient Attendances by Diagnosis and Month, 2019 cont...

Diagnosis	Jan	Feb	Mar	Apr	May	Jun	July	Aug	Sept	Oct	Nov	Dec	Grand Total
F30-F39 Mood (affective) disorders	633	241	359	605	464	606	289	658	430	182	632	125	5,224
F30.0 Hypomania	0	2	0	1	0	0	0	1	0	0	0	0	4
F30.2 Mania with psychotic symptoms	0	1	0	0	0	0	0	0	0	0	0	0	1
F30.9 Manic episode, unspecified	4	0	1	4	0	0	1	4	2	0	1	0	17
F31.9 Bipolar affective disorder, unspecified	192	91	100	171	125	189	60	171	91	44	181	37	1,452
F32.0 Mild depressive episode	2	1	32	9	9	0	1	4	1	0	5	1	65
F32.1 Moderate depressive episode	0	0	0	2	4	0	0	1	0	2	0	1	10
F32.3 Severe depressive episode without psychotic symptoms	0	1	0	0	0	1	0	1	1	0	1	2	7
F32.9 Depressive episode, unspecified	368	145	170	418	263	416	225	473	335	136	383	84	3,416
F33.0 Recurrent depressive disorder, current episode mild	64	0	56	0	60	0	0	1	0	0	58	0	239
F33.3 Depressive episode with psychotic symptoms	0	0	0	0	0	0	2	0	0	0	0	0	2
F33.9 Recurrent depressive disorder, unspecified	1	0	0	0	2	0	0	0	0	0	0	0	3
F34.9 Persistent mood(affective) disorder, unspecified	1	0	0	0	1	0	0	2	0	0	2	0	6
F39.9 Unspecified mood(affective)disorder	1	0	0	0	0	0	0	0	0	0	1	0	2
F40-F48 Neurotic, stress-related and somatoform disorders	167	65	179	168	157	178	80	256	149	135	263	85	1,882
F40.0 Panic disorder, with agoraphobia	0	0	0	0	0	1	0	0	0	0	2	0	3
F40.9 Phobic anxiety disorder, unspecified	5	1	0	1	2	1	3	11	7	3	3	0	37
F41.0 Panic disorder(episodic paroxysmal anxiety)	0	0	3	2	3	1	0	1	1	3	1	0	15
F41.1 Generalized anxiety disorder	2	0	1	0	3	3	1	15	6	1	5	1	38
F41.2 Mixed anxiety and depressive disorder	0	0	0	0	1	0	0	0	0	0	0	0	1
F41.9 Anxiety disorder, unspecified	28	8	16	21	12	29	15	16	15	14	35	4	213
F42.9 Obsessive-compulsive disorder, unspecified	1	0	0	0	0	0	0	0	0	0	0	0	1
F43.0 Acute stress reaction	47	18	48	56	58	49	35	67	75	7	71	26	557
F43.1 Post-traumatic stress disorder	13	4	13	8	8	16	5	33	5	4	13	3	125
F43.2 Adjustment disorders	53	26	75	57	58	61	16	106	34	59	98	47	690
F43.9 Reaction to severe stress, unspecified	6	7	12	13	4	6	0	3	1	42	22	2	118

Annex 3: Mental Health Out-Patient Attendances by Diagnosis and Month , 2019 cont...

Diagnosis	Jan	Feb	Mar	Apr	May	Jun	July	Aug	Sept	Oct	Nov	Dec	Grand Total
F44.9 Dissociative and conversion disorder, unspecified	3	0	1	2	3	2	0	1	2	1	3	0	18
F45.2 Hypochondriacal disorder(Body dysmorphic)	0	1	1	0	0	2	1	0	0	0	2	0	7
F45.9 Somatoform disorder, unspecified	9	0	9	8	4	7	4	3	3	1	8	2	58
F48.1 Depersonalization-derealisation disorder	0	0	0	0	1	0	0	0	0	0	0	0	1
F50-F59 Behavioural syndromes associated with physiological disturbances and physical factors	17	0	3	8	2	9	1	9	8	1	3	2	63
F51.0 Nonorganic insomnia	1	0	0	0	0	0	0	0	1	0	0	0	2
F51.1 Nonorganic hypersomnia	0	0	0	0	0	0	0	0	0	0	1	0	1
F52.1 Sexual aversion and lack of sexual enjoyment	1	0	1	0	0	0	0	0	0	0	0	0	2
F53.0 Postpartum depression	0	0	0	1	0	0	0	0	0	0	0	0	1
F53.9 Puerperal mental disorder, unspecified	15	0	2	7	2	9	1	9	7	1	2	2	57
F60-F69 Disorders of adult personality and behaviour	7	6	9	13	8	12	5	16	13	3	15	8	115
F60.0 Paranoid personality disorder	0	0	0	0	0	0	0	0	0	0	2	0	2
F60.2 Dissocial personality disorder	2	4	6	2	0	1	1	2	3	2	0	3	26
F60.3 Emotionally unstable personality disorder	2	2	3	3	3	2	0	6	1	0	3	3	28
F60.4 Histrionic personality disorder	1	0	0	0	0	0	0	2	0	0	0	1	4
F60.8 Narcissistic personality disorder	0	0	0	0	0	0	0	1	1	0	0	0	2
F60.9 Personality Disorder, unspecified	1	0	0	8	5	7	4	3	6	0	8	0	42
F63.2 Pathological stealing (Kleptomania)	0	0	0	0	0	1	0	1	1	1	1	1	6
F64.9 Gender identity disorder, unspecified	1	0	0	0	0	1	0	0	1	0	0	0	3
F66.9 Psychosexual development disorder, unspecified	0	0	0	0	0	0	0	1	0	0	1	0	2
F70-F79 Mental retardation	43	18	27	42	33	65	50	50	52	20	42	12	454
F70.9 Mild mental retardation without mention of impairment of behaviour	1	4	6	9	13	3	1	0	0	3	12	2	54
F71.9 Moderate mental retardation without mention of impairment of behaviour	0	0	0	0	1	3	2	4	7	2	2	0	21
F72.9 Severe mental retardation without mention of impairment of behaviour	0	0	0	0	0	1	1	0	0	0	0	0	2
F73.9 Profound mental retardation without mention of impairment of behaviour	0	0	0	0	0	1	0	0	0	0	0	0	1

Annex 3: Mental Health Out-Patient Attendances by Diagnosis and Month , 2019 cont...

Diagnosis	Jan	Feb	Mar	Apr	May	Jun	July	Aug	Sept	Oct	Nov	Dec	Grand Total
F79.9 Unspecified mental retardation without mention of impairment of behaviour	42	14	21	33	19	57	46	46	45	15	28	10	376
F80-F89 Disorders of psychological development	3	2	1	2	1	7	1	9	2	2	7	2	39
F81.9 Development disorder of scholastic skills	2	0	0	0	0	1	0	0	0	0	0	0	3
F84.0 Childhood autism	0	0	0	0	0	2	0	2	0	0	0	0	4
F84.1 Atypical autism	1	1	1	1	1	3	1	4	0	1	4	2	20
F84.5 Asperger's syndrome	0	0	0	0	0	0	0	1	1	0	0	0	2
F84.9 Pervasive development disorder, unspecified	0	1	0	1	0	1	0	2	1	1	3	0	10
F90-F98 Behavioural and emotional disorders with onset usually occurring in childhood and adolescence	40	12	30	48	39	52	22	50	39	16	37	11	396
F90.0 Disturbance of activity and attention	37	10	23	45	34	47	17	45	38	14	29	9	348
F90.9 Hyperkinetic disorder, unspecified	0	0	0	0	0	0	0	0	0	0	3	0	3
F91.0 Conduct disorder confined to the family context	0	0	0	0	0	0	0	1	0	0	0	0	1
F91.1 Unsocialized conduct disorder	0	0	0	0	0	1	0	0	0	0	0	0	1
F91.9 Conduct disorder, unspecified	3	2	7	3	4	3	3	4	0	2	4	1	36
F98.0 Nonorganic enuresis	0	0	0	0	1	1	2	0	1	0	1	1	7
F99 Unspecified mental disorder	9	9	8	5	9	5	5	14	4	5	7	3	83
F99 Mental disorder, not otherwise specified	9	9	8	5	9	5	5	14	4	5	7	3	83
G40-G47 Episodic and Paroxysmal disorders	266	72	248	289	248	295	179	265	244	136	240	102	2,584
G40.9 Epilepsy, unspecified	264	69	246	288	244	288	179	261	243	132	239	99	2,552
G43.9 Migraine, unspecified	0	0	0	0	0	0	0	0	0	0	0	2	2
G47.0 Disorders of initiating and maintaining sleep [insomnias]	1	0	0	0	1	5	0	3	0	1	1	1	13
G47.4 Narcolepsy and cataplexy	1	0	2	1	3	2	0	1	0	2	0	0	12
G47.9 Sleep disorder, unspecified	0	3	0	0	0	0	0	0	1	1	0	0	5
R40-R46 Symptoms and signs involving cognition, perception, emotional state and behaviour	1	0	0	0	2	1	0	0	0	0	0	0	4
R44.1 Visual hallucinations	0	0	0	0	1	0	0	0	0	0	0	0	1

Annex 3: Mental Health Out-Patient Attendances by Diagnosis and Month , 2019 cont...

Diagnosis	Jan	Feb	Mar	Apr	May	Jun	July	Aug	Sept	Oct	Nov	Dec	Grand Total
R45.4 Irritability and anger	0	0	0	0	0	1	0	0	0	0	0	0	1
R45.8 Other symptoms and signs involving emotional state(Suicidal ideation tendencies)	1	0	0	0	1	0	0	0	0	0	0	0	2
X60-X84 Intentional self-harm	26	2	12	5	11	10	0	13	0	8	20	0	107
X60 Intentional self-poisoning by and exposure to nonopioid analgesics, antipyretics and antirheumatics	0	0	1	1	0	0	0	0	0	3	0	0	5
X65 Intentional self-poisoning by and exposure to alcohol	0	2	0	0	0	0	0	0	0	0	0	0	2
X66 Intentional self-poisoning by and exposure to organic solvents and halogenated hydrocarbons and their vapours	0	0	1	0	0	0	0	0	0	0	0	0	1
X70 Intentional self-harm by hanging, strangulation and suffocation	0	0	1	0	0	0	0	0	0	2	6	0	9
X71 Intentional self-harm by drowning	0	0	0	1	0	0	0	0	0	0	0	0	1
X81 Intentional self-harm by jumping or lying before moving object	0	0	0	0	1	0	0	0	0	0	0	0	1
X84 Intentional self-harm by unspecified means	26	0	9	3	10	10	0	13	0	3	14	0	88
X85-Y09 Assault	1	0	0	0	0	0	0	0	0	0	0	0	1
X90 Assault by unspecified chemical or noxious substance	1	0	0	0	0	0	0	0	0	0	0	0	1
Z00-Z13 Persons encountering health services for examination and investigation	45	5	17	15	13	32	23	44	33	8	30	1	266
Z00.4 General psychiatric examination, not elsewhere classified	34	4	14	8	13	21	6	25	23	6	20	1	175
Z03.2 Observation for suspected mental and behavioural disorders	7	0	0	4	0	9	16	19	10	0	10	0	75
Z03.9 Observation for suspected disease or condition, unspecified	4	1	3	3	0	2	1	0	0	2	0	0	16
Z80-Z99 Persons with potential health hazards related to family and personal history and certain conditions influencing health status	16	8	5	6	4	5	4	11	15	4	4	1	86
Z91.5 Personal history of self-harm	16	8	5	7	4	5	4	11	15	4	5	2	86
Grand Total	3,463	1,605	2,353	3,276	2,635	3,522	1,873	3,500	2,784	1,535	3,591	1,096	31,233



OUTPATIENT MENTAL HEALTH DISORDERS

Statistical Brief 2019

