

# STATS BRIEF

RELEASED BY STATISTICS BOTSWANA

Private Bag 0024

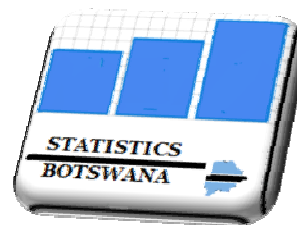
Gaborone, Botswana

Tel: (+267) 3934968

Fax: (+267) 3952201

Website: [www.cso.gov.bw](http://www.cso.gov.bw)

*Contact Statistician: Virginia Sebekedi*



*All correspondence should be addressed to the Government Statistician*

---

No. 2011/2

March, 2012

## ***MARRIAGE STATISTICS*** ***2009***

### **INTRODUCTION**

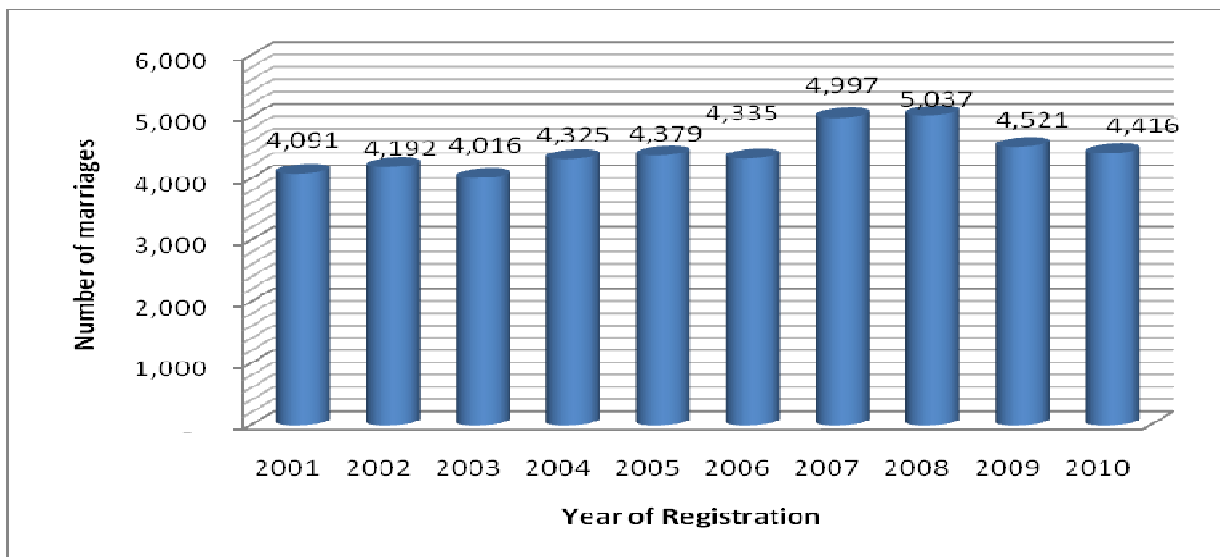
This Stats Brief is a summary of marriages that were registered in 2009. It is a section of the Population Report, which is a series of annual publications produced by the Statistics Botswana relating to births, deaths and marriages.

Data for marriages are extracted manually from the marriage certificates filed with the Department of Civil and National Registration and then processed by the Demography Unit of the Statistics Botswana

## 2.1 Trends in Marriages (2001-2009)

Chart 1 shows that generally, the number of marriages registered increases from year to year. However, a 10.2 percent decrease was observed between 2008 and 2009. The highest number of marriages was recorded in 2008.

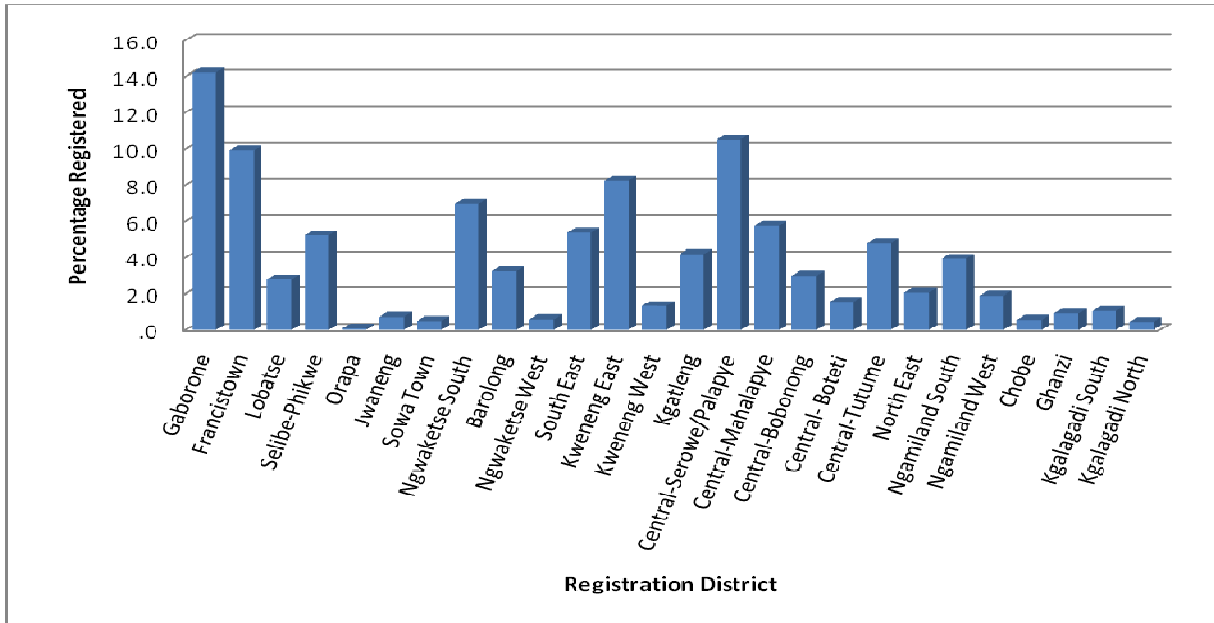
**Chart 1: TOTAL NUMBER OF MARRIAGES REGISTERED-2001-2009**



## 2.2 District of Registration

Chart 2 shows that the highest proportion of marriages was registered in Gaborone, followed by Serowe/Palapye, Francistown, Kweneng East and Ngwaketse South. Gaborone accounted for about 14 percent of total registered marriages that were registered in 2009 while Orapa registered the least number of marriages constituting 0.1 percent.

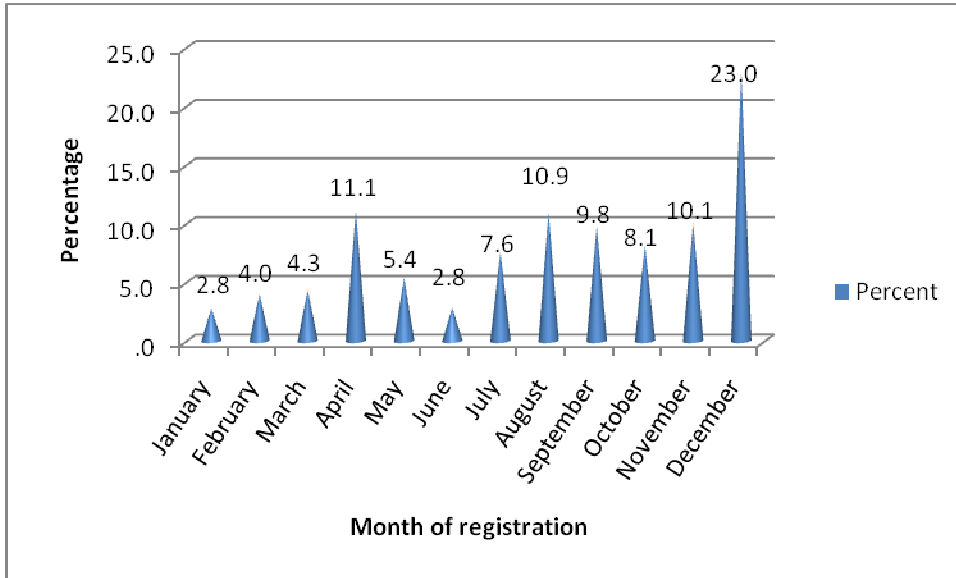
**Chart 2: PERCENTAGE DISTRIBUTION OF REGISTERED MARRIAGES BY REGISTRATION DISTRICT-2009**



### 2.3 Month of Registration

Chart 3 shows percentage of marriages registered in 2009 by month of registration. The number of registered marriages increased around the month of April from 4 percentage points to 11 percentage points. The number then decreased by 6 percentage points in May and increased again to 11 percentage points in August. The highest percent (23 percent) of registered marriages was in the month of December and lowest was registered was 3 percent in the month of January and June each.

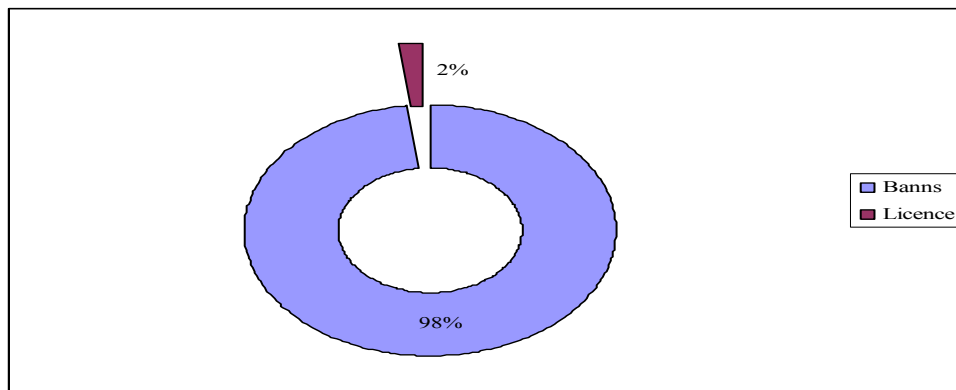
**Chart 3: REGISTERED MARRIAGES BY MONTH OF REGISTRATION-2009**



### 2.4 Type of Marriage

There are two types of marriages, those announced through Court Banns (the usual practice of proclaiming the names of the candidates for the period of 21 days before formalising the marriage) and the Special License that expedites the marriage process. As depicted by Chart 4, the most popular type of marriage was the court banns which constituted 98 percent of all the marriages registered in 2009. Special License marriage constituted the remaining 2 percent.

**Chart 4: PERCENTAGE DISTRIBUTION OF REGISTERED MARRIAGES BY TYPE OF MARRIAGE-2009**



## 2.5 Age at The Time of Marriage

Table 2.51 below shows that the mean age at first marriage for bachelors was around 38 years in 2009, while the comparable figure for spinsters was around 32 years. This is a common trend for the years 2006-2009. For the other years the mean ages at marriage time are 37 and 31 for bachelors and spinsters respectively.

**Table 2.51: MEAN AGE AT FIRST MARRIAGE-2001-2009**

Year	Bachelor	Spinster
2009	37.9	32.1
2008	37.6	31.9
2007	36.8	31.5
2006	36.9	31.4
2005	37.3	31.7
2004	37.3	31.8
2003	37.2	31.6
2002	37.2	31.1
2001	37.1	30.9

It is evident from Table 2.52, that there are marriages of minors (31 females and 3 males), who marry between the ages of 18-20 (under 21), accounting for 0.7 percent and 0.1 percent of total marriages registered in 2009 for females and males respectively. Men tend to marry at later ages with only 1.2 percent marrying at the ages between 20 and 24, while women at this age constitute 10.3 percent of the registered marriages in 2009. Generally women do not marry men of the same age group as theirs, but marry those who are in the next age group. Refer to Tables 1.2.

**TABLE 2.52: REGISTERED MARRIAGES AGE OF HUSBAND AND WIFE AT MARRIAGE TIME-2009**

Age	Male		Female	
	Total	Percentage	Total	Percentage
17	-	-	1	0.0
18	-	-	3	0.1
19	2	0.0	7	0.2
<b>18-19</b>	<b>2</b>	<b>0.0</b>	<b>11</b>	<b>0.2</b>
20	1	0.0	20	0.4
21	5	0.1	51	1.1
22	6	0.1	75	1.7
23	14	0.3	131	2.9
24	26	0.6	188	4.2
<b>20-24</b>	<b>52</b>	<b>1.2</b>	<b>465</b>	<b>10.3</b>
25	46	1.0	238	5.3
26	79	1.7	311	6.9
27	122	2.7	338	7.5
28	185	4.1	326	7.2
29	197	4.4	340	7.5
<b>25-29</b>	<b>629</b>	<b>13.9</b>	<b>1,553</b>	<b>34.4</b>
30-34	1,273	28.2	1,203	26.6
35-39	1,047	23.2	597	13.2
40-44	618	13.7	337	7.5
45-49	384	8.5	196	4.3
50-54	243	5.4	88	1.9
55-59	132	2.9	43	1.0
60-64	72	1.6	14	0.3
<b>30-64</b>	<b>3,769</b>	<b>83</b>	<b>2,478</b>	<b>55</b>
65+	69	1.5	14	0.3
<b>Total</b>	<b>4,521</b>	<b>100.0</b>	<b>4,521</b>	<b>100.0</b>

## 2.6 Registered Marriages and Occupation

The proportions of the males and females marrying differ across different occupations as depicted by Table 2.6. In 2009, the highest proportion (15.2 percent) of males marrying fell within the category of legislators, administrators and managers while the lowest proportion (1.7 percent) fell within the category of clerks. Marriage for females was at peak (34.2 percent) for those who were not employed and lowest (0.1 percent) for those who fall within the category of Botswana Defence Force.

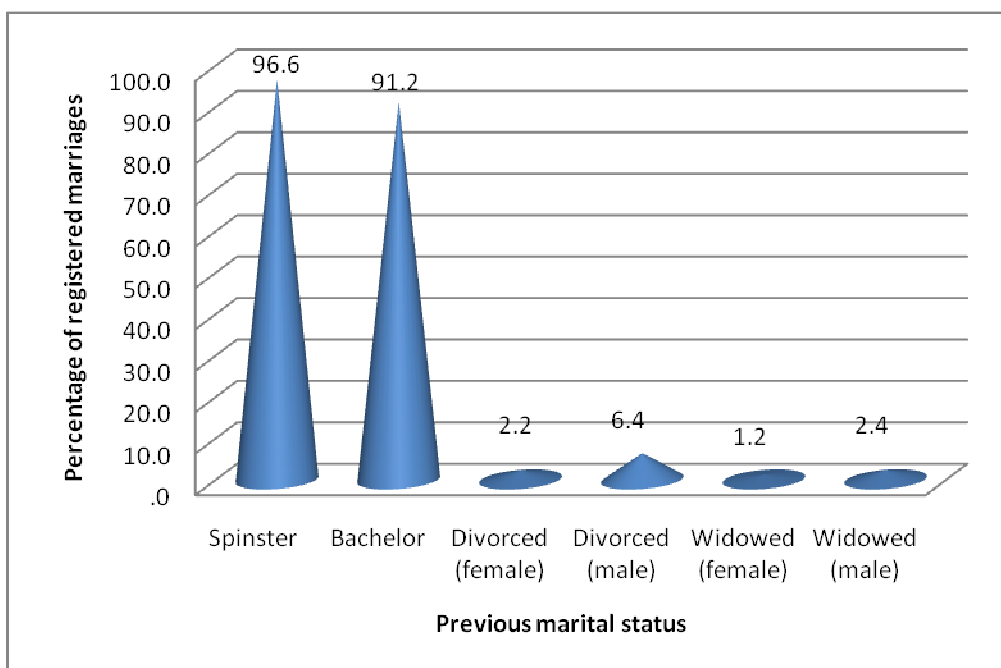
**Table 2.6: REGISTERED MARRIAGES BY OCCUPATION-2009**

OCCUPATION	Male		Female	
	Total	Percentage	Total	Percentage
Legislators, Administrators and Managers	687	15.2	439	9.7
Professionals	593	13.1	627	13.9
Technicians and Associate Professionals	489	10.8	422	9.3
Clerks	76	1.7	326	7.2
Service Workers and Shop Market Sales	582	12.9	478	10.6
Skilled Agricultural and Related Workers	195	4.3	67	1.5
Craft and Related Trade Workers	516	11.4	81	1.8
Plant and Machine Operators and Assemblers	547	12.1	44	1.0
Elementary Occupation	162	3.6	251	5.6
Botswana Defence Force	210	4.6	3	0.1
Not Classifiable	192	4.2	238	5.3
Unemployed	272	6.0	1,544	34.2
Not stated	-	-	1	0.0
<b>Total</b>	<b>4,521</b>	<b>100.0</b>	<b>4,521</b>	<b>100.0</b>

**2.7 Previous Marital Status**

Chart 5 depicts that, marriages in which men were bachelors accounted for 91.2 percent whilst those who had previously divorced formed 6.4 percent of the total marriages. Widowers had the lowest proportions of marriages for both men and women; however it is evident that men in this category re-marry more than women in the same category. The same scenario is noticed for the divorced. Marriages in which women were spinsters accounted for about 96.6 percent of the total marriages and those who had previously divorced formed 2.2 percent.

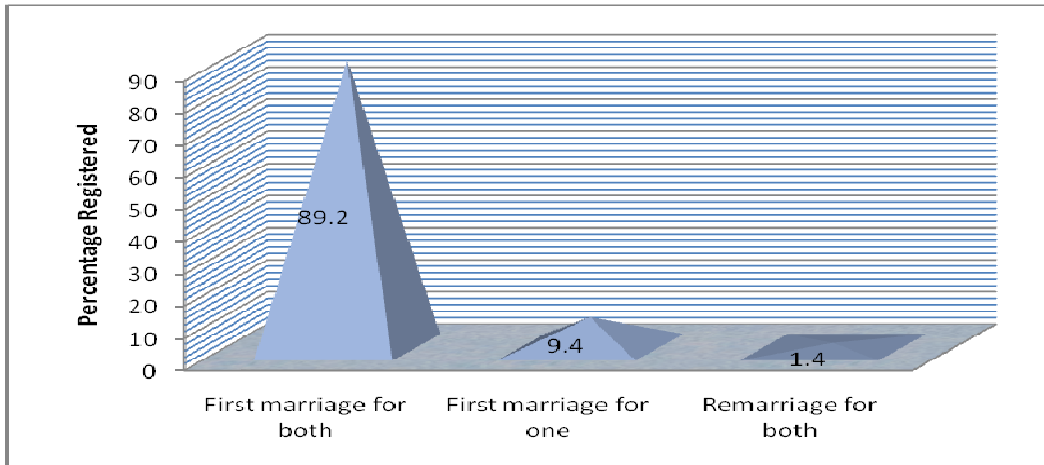
**Chart 5: MARRIAGES BY PREVIOUS MARITAL STATUS-2009**



## 2.8 Trends in First Marriages and Remarriages

Chart 6 clearly shows that, marriages between spinsters and bachelors account for 89.2 percent of all the marriages registered in 2009. Around 9 percent of the marriages were for those in which it was first marriage for one party and 1.4 percent of the marriages were for remarriage for both parties.

**Chart 6: TRENDS IN MARRIAGES AND RE-MARRIAGES-2009**



## 2.9 Crude Marriage Rate

Crude marriage rate gives the number of persons marrying within specified time period per 1000 population of all ages. The population that is used as the denominator for the calculation of crude marriage rate is the projected population from the 2001 Population and Housing Census. Table 2.91 shows that crude marriage rate for Botswana is just around 5 per 1000 people through all the years. The highest crude marriage rate was in 2007 and 2008 with around 6 per 1000 population each.

**Table 2.91: Crude Marriage Rate by Year of Marriage-2001- 2009**

Year	Projected Population	Marriages	Married persons	Crude Marriage Rate
2001	1,680,863	4,091	8,182	4.87
2002	1,667,487	4,192	8,384	5.03
2003	1,691,390	4,016	8,032	4.75
2004	1,711,334	4,325	8,650	5.05
2005	1,727,372	4,379	8,758	5.07
2006	1,739,556	4,335	8,670	4.98
2007	1,756,651	4,997	9,994	5.69
2008	1,776,283	5,037	10,074	5.78
2009	1,798,372	4,521	9,042	5.03

*Majelantle*

A.N. Majelantle

**Acting Statistician General**



**TABLE 1.0 A SUMMARY OF MARRIAGES 2001- 2009**

<b>Year of marriage</b>	<b>2001</b>	<b>2002</b>	<b>2003</b>	<b>2004</b>	<b>2005</b>	<b>2006</b>	<b>2007</b>	<b>2008</b>	<b>2,009</b>
<b>Total marriages</b>	<b>4,091</b>	<b>4,192</b>	<b>4,016</b>	<b>4,325</b>	<b>4,379</b>	<b>4,335</b>	<b>4,997</b>	<b>5,037</b>	<b>4,521</b>
<b>Quarterly Totals</b>									
Jan-March	534	565	548	500	568	496	547	548	503
Apr-June	755	738	787	752	776	745	869	822	875
July-Sept	1,136	1,129	1,092	1,209	1,238	1,135	1,420	1,449	1,280
Oct-Dec	1,666	1,760	1,589	1,864	1,797	1,959	2,161	2,281	1,863
<b>Total</b>	<b>4,091</b>	<b>4,192</b>	<b>4,016</b>	<b>4,325</b>	<b>4,379</b>	<b>4,335</b>	<b>4,997</b>	<b>5,037</b>	<b>4,521</b>
<b>Previous marital status</b>									
Males									
Bachelor	3,984	3,913	3,702	3,997	4,024	3,984	4,585	4,629	4,124
Divorced	78	208	217	239	244	249	274	280	289
Widowed	29	71	97	89	111	102	138	128	108
<b>Total</b>	<b>4,091</b>	<b>4,192</b>	<b>4,016</b>	<b>4,325</b>	<b>4,379</b>	<b>4,335</b>	<b>4,997</b>	<b>5,037</b>	<b>4,521</b>
Females									
Spinster	3,827	3,856	3,919	4,213	4,272	4,208	4,871	4,898	4,367
Divorced	205	38	69	82	74	90	79	96	101
Widowed	59	19	28	30	33	37	47	43	53
<b>Total</b>	<b>4,091</b>	<b>4,192</b>	<b>4,016</b>	<b>4,325</b>	<b>4,379</b>	<b>4,335</b>	<b>4,997</b>	<b>5,037</b>	<b>4,521</b>
First marriage for both	3,756	3,856	3,653	3,941	3,963	3,926	4,504	4,550	4,034
First marriage for one	298	287	315	328	370	340	448	427	423
Remarriage for both	37	49	48	56	46	69	45	60	64
<b>Total</b>	<b>4,091</b>	<b>4,192</b>	<b>4,016</b>	<b>4,325</b>	<b>4,379</b>	<b>4,335</b>	<b>4,997</b>	<b>5,037</b>	<b>4,521</b>
<b>Type of marriage</b>									
After Banns	3,996	4,105	3,874	4,173	4,234	4,205	4,915	4,950	4,453
Special License	95	87	140	152	145	130	82	87	68
Not stated	-	-	2	-	-	-	-	-	-
<b>Total</b>	<b>4,091</b>	<b>4,192</b>	<b>4,016</b>	<b>4,325</b>	<b>4,379</b>	<b>4,335</b>	<b>4,997</b>	<b>5,037</b>	<b>4,521</b>

**TABLE 1.1 AGE AT MARRIAGE BY MARITAL STATUS AND SEX-2009**

Age	Males					Females				
	Bachelor	Divorced	Widowed	Total	Percentage	Spinster	Divorced	Widowed	Total	Percentage
15-19	2	-	-	2	0.0	11	-	-	11	0.2
20-24	51	-	1	52	1.2	465	-	-	465	10.3
25-29	627	1	1	629	13.9	1,543	10	-	1,553	34.4
30-34	1,261	6	6	1,273	28.2	1,172	18	13	1,203	26.6
35-39	1,000	41	6	1,047	23.2	550	29	18	597	13.2
40-44	539	59	20	618	13.7	314	17	6	337	7.5
45-49	289	66	29	384	8.5	172	17	7	196	4.3
50-54	176	51	16	243	5.4	77	5	6	88	1.9
55-59	88	37	7	132	2.9	37	4	2	43	1.0
60-64	45	17	10	72	1.6	13	-	1	14	0.3
65+	46	11	12	69	1.5	13	1	-	14	0.3
<b>Total</b>	<b>4,124</b>	<b>289</b>	<b>108</b>	<b>4,521</b>	<b>100.0</b>	<b>4,367</b>	<b>101</b>	<b>53</b>	<b>4,521</b>	<b>100.0</b>

**TABLE 1.2 AGE IN COMBINATION AT MARRIAGE TIME-2009**

		Age of wife										Total	
		15-19	20-24	25-29	30-34	35-39	40-44	45-49	50-54	55-59	60-64		65+
Age of husband	15-19	1	1	-	-	-	-	-	-	-	-	-	2
	20-24	3	31	11	6	1	-	-	-	-	-	-	52
	25-29	2	185	366	53	14	7	1	-	1	-	-	629
	30-34	2	164	644	383	66	10	3	-	-	1	-	1,273
	35-39	2	56	352	431	177	24	3	1	1	-	-	1,047
	40-44	1	16	106	203	183	92	15	2	-	-	-	618
	45-49	-	7	42	80	99	103	46	5	2	-	-	384
	50-54	-	3	16	34	38	60	65	25	1	1	-	243
	55-59	-	2	9	10	11	26	40	25	9	-	-	132
	60-64	-	-	3	2	6	12	19	15	13	1	1	72
	65+	-	-	4	1	2	3	4	15	16	11	13	69
<b>Total</b>	<b>11</b>	<b>465</b>	<b>1,553</b>	<b>1,203</b>	<b>597</b>	<b>337</b>	<b>196</b>	<b>88</b>	<b>43</b>	<b>14</b>	<b>14</b>	<b>4,521</b>	

**TABLE 1.3 REGISTERED MARRIAGES BY AGE GROUP AND PLACE OF RESIDENCE OF WIFE AND HUSBAND AT MARRIAGE TIME-2009**

DISTRICT	Age group																						Total	
	15-19		20-24		25-29		30-34		35-39		40-44		45-49		50-54		55-59		60-64		65+			
	M	F	M	F	M	F	M	F	M	F	M	F	M	F	M	F	M	F	M	F	M	F	M	F
Gaborone	-	1	11	122	143	334	305	241	221	117	115	62	63	23	27	5	13	3	4	-	3	-	905	908
Francistown	1	2	9	40	86	139	126	104	101	41	44	27	37	16	18	7	7	5	3	3	7	1	439	385
Lobatse	-	-	2	4	16	33	21	30	19	17	18	9	5	5	7	-	2	1	1	-	2	1	93	100
Selibe-Phikwe	-	1	2	22	42	77	77	47	50	30	30	12	24	4	12	2	8	-	2	1	4	1	251	197
Orapa	-	-	1	6	8	15	27	12	16	5	8	2	2	-	5	-	1	-	-	-	-	-	68	40
Jwaneng	-	-	-	4	8	15	19	10	12	3	4	1	3	2	6	-	1	1	1	-	2	-	56	36
Sowa Town	-	-	-	1	-	2	4	3	6	4	7	-	1	-	1	-	-	-	-	-	-	-	19	10
Ngwaketse South	-	-	-	18	30	75	49	67	44	30	41	25	22	22	22	10	17	11	12	3	9	2	246	263
Barolong	-	-	-	8	8	22	20	19	9	8	8	11	5	3	6	2	2	3	5	-	5	2	68	78
Ngwaketse West	-	-	-	3	-	4	5	6	6	6	1	1	4	2	3	-	-	-	1	-	1	1	21	23
South East	-	-	4	26	29	83	52	61	51	33	30	16	21	11	14	4	10	1	3	-	4	3	218	238
Kweneng East	-	-	2	44	69	185	133	147	129	75	77	49	52	29	22	11	20	2	10	2	8	2	522	546
Kweneng West	-	1	4	7	13	27	24	17	22	11	16	1	7	3	5	1	2	1	-	2	1	-	94	71
Kgatleng	-	-	1	19	25	68	33	59	41	22	16	10	15	7	11	3	3	3	4	1	2	-	151	192
Serowe/Palapye	1	2	6	32	22	101	71	84	63	37	39	30	25	13	16	13	12	3	8	-	2	-	265	315
C.Mahalapye	-	-	2	7	17	51	36	50	45	22	21	15	29	10	11	5	6	1	-	-	2	-	169	161
C.Bobonong	-	-	-	14	10	42	30	28	23	22	13	13	9	9	11	2	4	2	3	1	3	-	106	133
C.Boteti	-	1	-	7	6	26	18	13	16	10	10	2	5	3	-	3	2	-	1	-	-	-	58	65
C.Tutume	-	1	3	13	18	53	37	48	42	34	23	7	13	6	7	7	6	1	4	1	1	-	154	171
North East	-	-	2	10	13	39	33	30	15	10	11	5	4	9	11	4	3	1	-	-	5	-	97	108
Ngamiland South	-	1	-	21	24	65	57	43	42	24	34	19	13	9	7	4	6	-	4	-	3	1	190	187
Ngamiland West	-	-	-	7	8	33	32	29	15	10	10	4	5	2	2	-	2	1	1	-	2	-	77	86
Chobe	-	-	-	9	11	15	11	15	11	5	5	-	3	-	2	-	-	-	-	-	-	-	43	44
Ghanzi	-	1	1	5	6	13	15	16	14	11	14	4	2	2	3	1	3	1	2	-	-	-	60	54
CKGR	-	-	-	-	-	-	1	-	1	-	-	-	-	-	-	-	-	-	-	-	-	-	2	-
Kgalagadi South	-	-	-	5	7	15	12	9	8	4	4	7	6	2	5	2	-	-	-	-	1	-	43	44
Kgalagadi North	-	-	-	2	2	9	9	7	7	2	5	2	5	2	4	2	1	-	1	-	-	-	34	26
Outside Botswana	-	-	2	9	8	12	16	8	18	4	14	3	4	2	5	-	1	2	2	-	2	-	72	40
<b>Total</b>	<b>2</b>	<b>11</b>	<b>52</b>	<b>465</b>	<b>629</b>	<b>1,553</b>	<b>1,273</b>	<b>1,203</b>	<b>1,047</b>	<b>597</b>	<b>618</b>	<b>337</b>	<b>384</b>	<b>196</b>	<b>243</b>	<b>88</b>	<b>132</b>	<b>43</b>	<b>72</b>	<b>14</b>	<b>69</b>	<b>14</b>	<b>4,521</b>	<b>4,521</b>

**TABLE 1.4: NUMBER OF MARRIAGES REGISTERED BY HUSBAND AND WIFE'S PROFESSION-2009**

**Male profession**

Female Profession	Legislators, Administrators and Managers	Professionals	Technicians and Associate Professionals	Clerks	Service Workers and Shop Market Sales Workers	Skilled Agricultural and Related Workers	Craft and Related Trade Workers	Plant and Machine Operators and Assemblers	Elementary Occupation	Botswana Defence Force	Not Classifiable	Unemployed	Total
Legislators, Administrators and Managers	139	43	44	8	40	11	52	36	13	23	17	13	439
Professionals	88	195	81	10	77	10	40	41	10	35	23	17	627
Technicians and Associate Professionals	79	77	85	7	46	6	34	26	3	24	26	9	422
Clerks	53	43	48	11	42	7	24	46	4	17	18	13	326
Service Workers and Shop Market Sales Workers	60	52	43	9	110	24	46	63	17	24	12	18	478
Skilled Agricultural and Related Workers	3	-	2	1	2	48	4	3	1	-	1	2	67
Craft and Related Trade Workers	5	5	10	-	13	1	15	15	4	6	3	4	81
Plant and Machine Operators and Assemblers	9	1	3	2	8	-	2	11	2	3	1	2	44
Elementary Occupation	22	13	20	8	35	12	37	45	25	4	8	22	251
Botswana Defence Force	1	-	1	-	-	-	-	-	1	-	-	-	3
Not Classifiable	37	48	33	4	25	3	12	19	3	11	36	7	238
Unemployed	191	116	119	16	184	73	249	242	79	63	47	165	1,544
Not Stated	-	-	-	-	-	-	1	-	-	-	-	-	1
<b>Total</b>	<b>687</b>	<b>593</b>	<b>489</b>	<b>76</b>	<b>582</b>	<b>195</b>	<b>516</b>	<b>547</b>	<b>162</b>	<b>210</b>	<b>192</b>	<b>272</b>	<b>4,521</b>

**Table 1.5 PREVIOUS MARITAL STATUS OF PERSON MARRYING-2001-2009**

**Females**

Year of marriage		Total	Percent	Spinster	Percent	Divorced	Percent	Widowed	Percent
<b>Males</b>									
<b>2001</b>	Bachelor	3,984	97.4	3,756	94.3	52	65.8	19	65.5
	Divorced	78	1.9	172	4.3	26	32.9	7	24.1
	Widowed	29	0.7	55	1.4	1	1.3	3	10.3
	<b>Total</b>	<b>4,091</b>	<b>100.0</b>	<b>3,983</b>	<b>100</b>	<b>79</b>	<b>100.0</b>	<b>29</b>	<b>100.0</b>
<b>2002</b>	Bachelor	3,913	93.3	3,856	94.4	38	50.7	19	61.3
	Divorced	208	5.0	168	4.1	29	38.7	11	35.5
	Widowed	71	1.7	62	1.5	8	10.7	1	3.2
	<b>Total</b>	<b>4,192</b>	<b>100.0</b>	<b>4086</b>	<b>100.0</b>	<b>75</b>	<b>100.0</b>	<b>31</b>	<b>100.0</b>
<b>2003</b>	Bachelor	3,702	92.2	3,653	93.2	30	43.5	19	67.9
	Divorced	217	5.4	181	4.6	30	43.5	6	21.4
	Widowed	97	2.4	85	2.2	9	13	3	10.7
	<b>Total</b>	<b>4,016</b>	<b>100.0</b>	<b>3919</b>	<b>100.0</b>	<b>69</b>	<b>100.0</b>	<b>20</b>	<b>100.0</b>
<b>2004</b>	Bachelor	3,997	92.4	3,941	93.5	40	48.8	16	53.3
	Divorced	239	5.5	199	4.7	35	42.7	5	16.7
	Widowed	89	2.1	73	1.7	7	8.5	9	30
	<b>Total</b>	<b>4,325</b>	<b>100.0</b>	<b>4,213</b>	<b>100.0</b>	<b>82</b>	<b>100.0</b>	<b>30</b>	<b>100.0</b>
<b>2005</b>	Bachelor	4,024	91.9	3,962	92.8	36	48.6	25	75.8
	Divorced	244	5.6	213	5	28	37.8	3	9.1
	Widowed	111	2.5	96	2.2	10	13.5	5	15.2
	<b>Total</b>	<b>4,379</b>	<b>100.0</b>	<b>4,271</b>	<b>100.0</b>	<b>74</b>	<b>100.0</b>	<b>33</b>	<b>100.0</b>
<b>2006</b>	Bachelor	3,984	91.9	3,926	93.3	38	42.2	20	54.1
	Divorced	249	5.7	199	4.7	42	46.7	8	21.6
	Widowed	102	2.4	83	2	10	11.1	9	24.3
	<b>Total</b>	<b>4,335</b>	<b>100.0</b>	<b>4,208</b>	<b>100.0</b>	<b>90</b>	<b>100.0</b>	<b>37</b>	<b>100.0</b>
<b>2007</b>	Bachelor	4,585	91.8	4,504	92.5	46	58.2	35	74
	Divorced	274	5.5	238	4.9	27	34.2	9	19
	Widowed	138	2.8	129	2.6	6	7.6	3	6
	<b>Total</b>	<b>4,997</b>	<b>100.0</b>	<b>4,871</b>	<b>100.0</b>	<b>79</b>	<b>100.0</b>	<b>47</b>	<b>100.0</b>
<b>2008</b>	Bachelor	4,629	91.9	4,550	92.9	83	55.2	26	60.5
	Divorced	280	5.6	235	4.8	37	38.5	8	18.6
	Widowed	128	2.5	113	2.3	6	6.3	9	20.9
	<b>Total</b>	<b>5,037</b>	<b>100</b>	<b>4,898</b>	<b>100</b>	<b>96</b>	<b>100</b>	<b>43</b>	<b>100</b>
<b>2009</b>	Bachelor	4,124	91.2	4,034	92.4	54	53.5	36	67.9
	Divorced	289	6.4	237	5.4	38	37.6	14	26.4
	Widowed	108	2.4	96	2.2	9	8.9	3	5.7
	<b>Total</b>	<b>4,521</b>	<b>100.0</b>	<b>4,367</b>	<b>100.0</b>	<b>101</b>	<b>100.0</b>	<b>53</b>	<b>100.0</b>