



INTERNATIONAL MERCHANDISE TRADE STATISTICS

Monthly Digest- February 2024

Contact Statistician: Mogotsi J. Morewanare
Email: mmorewanare@statsbots.org.bw



STATISTICS BOTSWANA

Published by

STATISTICS BOTSWANA

GABORONE (HEAD OFFICE)

Private Bag 0024
Gaborone
Tel: 3671300 Fax: 3952201
Toll Free: 0800 600 200

MAUN OFFICE

Private Bag 47
Maun
Tel: 371 5716
Fax: 686 4327

FRANCISTOWN OFFICE

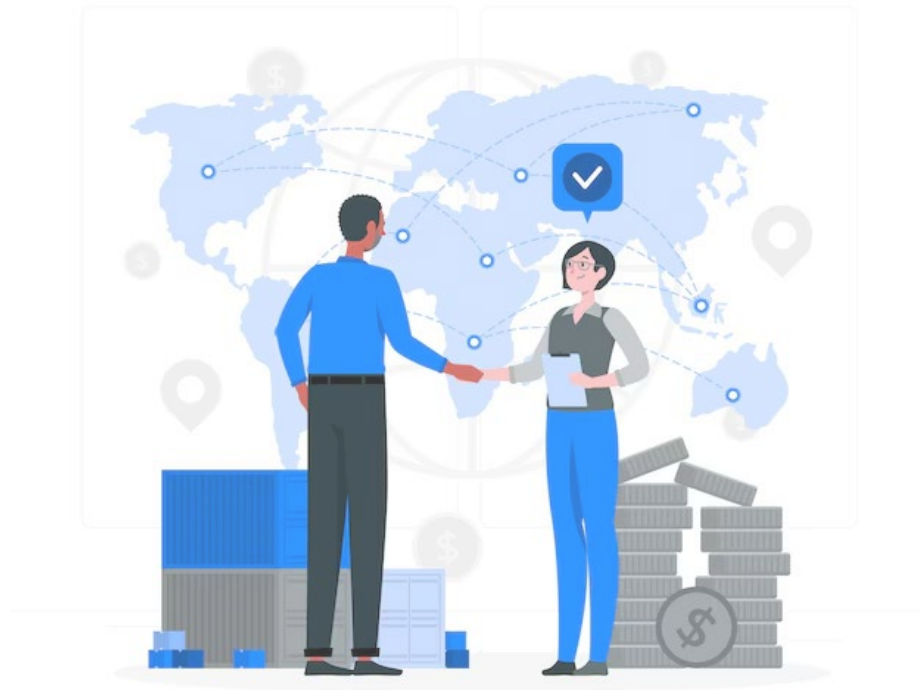
Private Bag F193,
City of Francistown
Tel: 241 5848,
Fax: 241 7540

E-mail: info@statsbots.org.bw
Website: <http://www.statsbots.org.bw>

APRIL 2024

Copyright © Statistics Botswana 2024





INTERNATIONAL MERCHANDISE TRADE STATISTICS

Monthly Digest- February 2024

TABLE OF CONTENTS

List of Acronyms.....	2
Preface.....	ii
Executive Summary.....	1
1.0 Total Trade.....	2
1.1 Data Revision.....	2
1.2 Imports.....	2
1.3 Total Exports.....	2
1.4 Trade Balance.....	2
2.0 Trade by Principal Commodity Groups.....	3
2.1 Principal Imports.....	3
2.2 Principal Exports.....	4
3.0 Direction of Trade.....	5
4.0 Imports and Exports by Top imported and Exported Commodities.....	7
5.0 Trade by Mode of Transport.....	7
6.0 Transit Trade.....	8
7.0 Annexure.....	11
8.0 Concepts, Sources and Methods.....	23
8.1 Time of Recording of Trade.....	23
8.2 Concepts and Definitions.....	23
8.3 Exclusions from IMTS.....	24

LIST OF TABLES

Table A: Data Revision: January 2024 (Million Pula).....	2
Table B: Trade by Mode of Transport – February 2024 (Million Pula).....	8
Table C1: Transit Trade by Border Post – February 2024 (Million Pula).....	9
Table C2: Transit by Chapter – February 2024 (Million Pula).....	10
Table 1.0: Total Merchandise Trade – January 2022 to February 2024 (Million Pula).....	11
Table 2.1: Principal Imports Commodity Groups – January 2022 to February 2024 (Million Pula).....	12
Table 2.2: Principal Export Commodity Groups – January 2022 to February 2024 (Million Pula).....	13
Table 2.3: Diamonds Trade – January 2022 to February 2024 (Million Pula).....	14
Table 3.1A: Total Imports by Country, Region and Principal Import Commodity Groups - February 2024 (Million Pula).....	15
Table 3.1B: Principal Imports Commodity Groups as a Percentage of Total Imports at Country and Regional Level – February 2024.....	16
Table 3.2A: Total Exports by Country, Region and Principal Export Commodity Groups – February 2024 (Million Pula).....	17
Table 3.2B: Principal Exports Commodity Groups as a Percentage of Total Exports at Country and Regional Level – February 2024.....	18
Table 4.1 A: Top Imported Goods (Excluding Diamonds) – February 2024 (Million Pula).....	19
Table 4.1A: Top Imported Goods (Excluding Diamonds) – February 2024 (Million Pula) Continued..	20
Table 4.1 B: Top Exported Goods (Excluding Diamonds) – February 2024 (Million Pula).....	21
Table 4.1 B: Top Exported Goods (Excluding Diamonds) – February 2024 (Million Pula) Continued..	22

TABLE OF CONTENTS

LIST OF CHARTS

Chart 1.0: Total International Merchandise Trade – January 2022 to February 2024 (Million Pula).....	3
Chart 2.1: Composition of Principal Imports- February 2024.....	4
Chart 2.2: Composition of Principal Exports – February 2024.....	4
Chart 3.1: Imports by Major Trading Partner Countries & Regions – February 2024.....	6
Chart 3.2: Exports by Major Trading Partner Countries & Regions – February 2024.....	7
Chart B: Trade by Mode of Transport – February 2024 (Percentage).....	8
Chart C1: Transit Trade by Border Post – February 2024 (Percentage).....	9
Chart C2: Transit Trade by Chapter – February 2024 (Percentage).....	10

List of Acronyms

CIF	: Cost, Insurance and Freight
EU	: European Union
FOB	: Free On Board
IMTS	: International Merchandise Trade Statistics
NES	: Not Elsewhere Specified
SACU	: Southern Africa Customs Union
SADC	: Southern Africa Development Community
UAE	: United Arab Emirates
USA	: United States of America

Preface

International Merchandise Trade Statistics measure the flows of goods across national borders and can be used to spot emerging markets, gauge competition, and identify export and import opportunities. As a result, it is integral to the process of globalization by keeping track of all exchanges of goods between trading partners. The transaction reflects the value and quantity of goods that add to (Imports) or subtract from (Exports), the stock of material resources of a country. Trade statistics continue to be one of the key indicators of economic performance and global competitiveness.

The monthly International Merchandise Trade Statistics are used extensively in the compilation of national accounts and balance of payments. Furthermore, these statistics are used by government institutions and other stakeholders for trade negotiations and other various purposes.

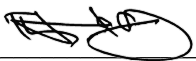
This publication outlines Botswana's monthly International Merchandise Trade Statistics (IMTS) for February 2024. The report provides summaries of international trade in goods, as shown in **Table 1.0**. **Tables 2.1** and **2.2** show trade by Principal commodity groupings for imports and exports, respectively, whereas **Table 2.3** solely shows trade in diamonds. The direction of trade appears in **Table 3.1A** (imports) and **Table 3.2A** (total exports). Major trading partner countries by commodity groups, as a percentage of trade at region or country level, for February 2024 are presented in **Table 3.1B** for imports and **Table 3.2B** for exports. The top traded import and export commodities excluding diamonds for February 2024 are presented in **Tables 4.1A** & **4.2A** respectively. This is to guide users on opportunities to produce commodities for import substitution or possible exportation.

Changes in data for the corresponding months in the current versus previous digests may be attributed to data from transactions that had deferred customs duty assessments. The data for such transactions would only be available at a later stage after customs duty assessments have been completed.

International trade statistics by mode of transport are collected for the active modes of transport (road, rail, air) through which goods are presumed to leave or enter the statistical territory of the country. Such data may be used to formulate transport policy, monitor international transport routes or assess the impact of international trade on the environment.

For more information, contact the Directorate of Stakeholder Relations at **3671300**. All Statistics Botswana publications are available on the website at www.statsbots.org.bw and at the Statistics Botswana Information Resource Centre (Head Office, Gaborone).

I sincerely thank all stakeholders involved in the formulation of this monthly digest, for their continued support and feedback, as we strive to serve users of our products and services.



Dr Lucky Mokgatlhe
Acting Statistician General
April 2024

Executive Summary

This International Merchandise Trade Statistics (IMTS) monthly digest provides a summary of trade statistics on Botswana's total imports and exports of goods for February 2024.

Botswana's overall exports amounted to P2, 887.3 million, recording a decline of 41.2 percent from the revised January 2024 value of P4, 913.7 million. Diamonds, Copper and Machinery & Electrical Equipment led the total exports with contributions of 51.0 percent, 22.7 percent and 10.0 percent respectively.

In February 2024, Imports stood at P7, 260.2 million, registering a decrease of 5.7 percent from the revised January 2024 value of P 7, 700.3 million. The top imported commodity groups were Fuel at 22.3 percent, followed by Machinery & Electrical Equipment and Food, Beverages & Tobacco at 16.0 percent and 15.2 percent, respectively. Chemicals & Rubber Products contributed 11.8 percent, while Diamonds accounted for 10.4 percent.

The Southern African Customs Union (**SACU**) was the main source of imports at 74.3 percent. Asia and the European Union (**EU**) accounted for 8.9 percent and 5.1 percent of total imports, respectively. South Africa, Canada and China supplied imports accounting for 69.9 percent, 4.1 percent and 3.9 percent respectively (**Table 3.1A**).

During the period under review, Botswana's exports were mostly absorbed by Asia with a market share of 46.5 percent. **SACU** and the **EU** received 29.3 percent and 7.0 percent of total exports, respectively. Botswana's top export destinations were South Africa, the United Arab Emirates (**UAE**), Australia, and China receiving exports representing 28.3, 25.2, 11.6 and 10.0 percent of total exports respectively. (**Table 3.2A**).

Goods exported by Air accounted for 52.6 percent of total exports, while Road and Rail represented 46.7 percent and 0.7 percent respectively. Imports representing 72.5 percent of the total were transported into the country by Road. Goods imported by Rail and Air accounted for 16.4 percent and 11.1 percent of total imports respectively (**Table B**).

During February 2024, merchandise worth P16, 251.2 million transited through the country to various destinations. Goods accounting for 55.3 percent of total goods in transit were routed through Kazungula Bridge. Martins Drift and Pioneer Gate border posts followed with 23.2 percent and 8.9 percent respectively, (**Table C1**). The top transiting goods were chapter 74 (Copper and articles thereof) at 30.2 percent, Chapter 28 (Inorganic chemicals; organic and inorganic compounds of precious metals; of rare earth metals, of radio-active elements and of isotopes) at 21.5 percent and chapter 99 (Commodities not specified according to kind) at 16.7 percent (**Table C2**).

1.0 Total Trade

Total merchandise trade refers to imports, domestic exports, re-exports and trade balance between countries or regions over a specific period. The discussions are based on February 2024, which is also referred to as the reference period, the period under review or the current month, throughout the digest.

1.1 Data Revision

The current monthly digest is based on preliminary figures with regard to the reference period. Revisions in the monthly trade statistics data are always necessary because they allow for the incorporation of the additional and improved data that were not available at the previous release date, or when there are late customs duty assessments. Revisions are made on a monthly basis when monthly data files are uploaded into the database, thereby bringing additional information for previous months. In some instances, revisions are negligible, while notably significant in others.

The inclusion of additional data in February 2024 resulted in the upward revision to both trade flows in January 2024. Imports increased by 2.1 percent (P155.0 million) while total exports rose by 1.3 percent (P63.8 million). **Table A** shows revised data comparing figures in the January 2024 digest and the current.

Table A: Data Revision: January 2024 (Million Pula)

Period	As at January 2024 Digest (P Million)			As at February 2024 Digest (P Million)			Difference (P million)			Difference as %		
	Imports (CIF)	Total Exports	Trade Balance	Imports (CIF)	Total Exports	Trade Balance	Imports (CIF)	Total Exports	Trade Balance	Imports (CIF)	Total Exports	Trade Balance
January_2024	7,545.3	4,849.9	(2,695.4)	7,700.3	4,913.7	(2,786.6)	155.0	63.8	(91.2)	2.1	1.3	3.4

() denotes negative

1.2 Imports

Imports are valued at Cost, Insurance & Freight (CIF), the price includes the value of goods, insurance and freight costs required for delivering the commodities to the destination, but excludes customs or any other duties paid on arrival at the border of the importing country.

Botswana received imports amounting to P7, 260.2 million in February 2024, registering a decrease of 5.7 percent (P440.1 million) from the revised January 2024 figure of P7, 700.3 million. The decrease was mainly attributed to the decline in the importation of Diamonds by 57.9 percent (P1, 042.2 million), from P1, 799.0 million in January 2024 to P756.8 million recorded in February 2024 (**Table 2.1**).

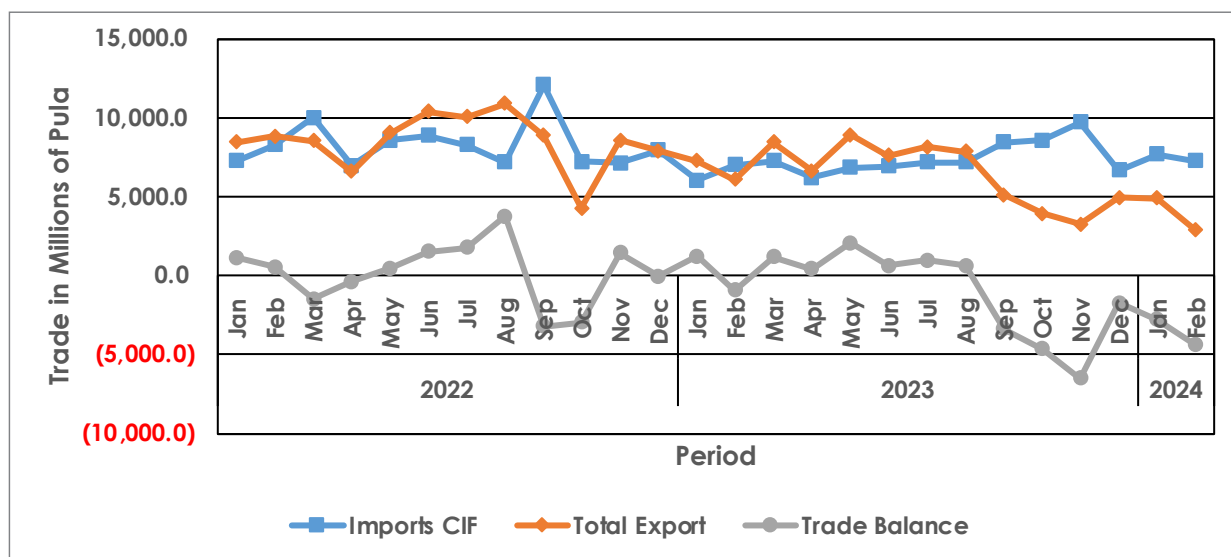
1.3 Total Exports

Botswana's export earnings dropped by 41.2 percent (P2, 026.4 million) from the revised value of P4, 913.7 million recorded in January 2024 to P2, 887.3 million during the period under review. Diamonds contributed immensely to the decline of total exports by dropping by 56.0 percent (P1, 875.0 million) as shown in **Table 2.2**.

1.4 Trade Balance

Botswana's trade deficit increased from the revised P2, 786.6 million in January 2024 to P4, 372.9 million in February 2024. **Chart 1.0** displays the graphical presentation of the trade balance from January 2022 to February 2024.

Chart 1.0: Total International Merchandise Trade – January 2022 to February 2024 (Million Pula)



2.0 Trade by Principal Commodity Groups

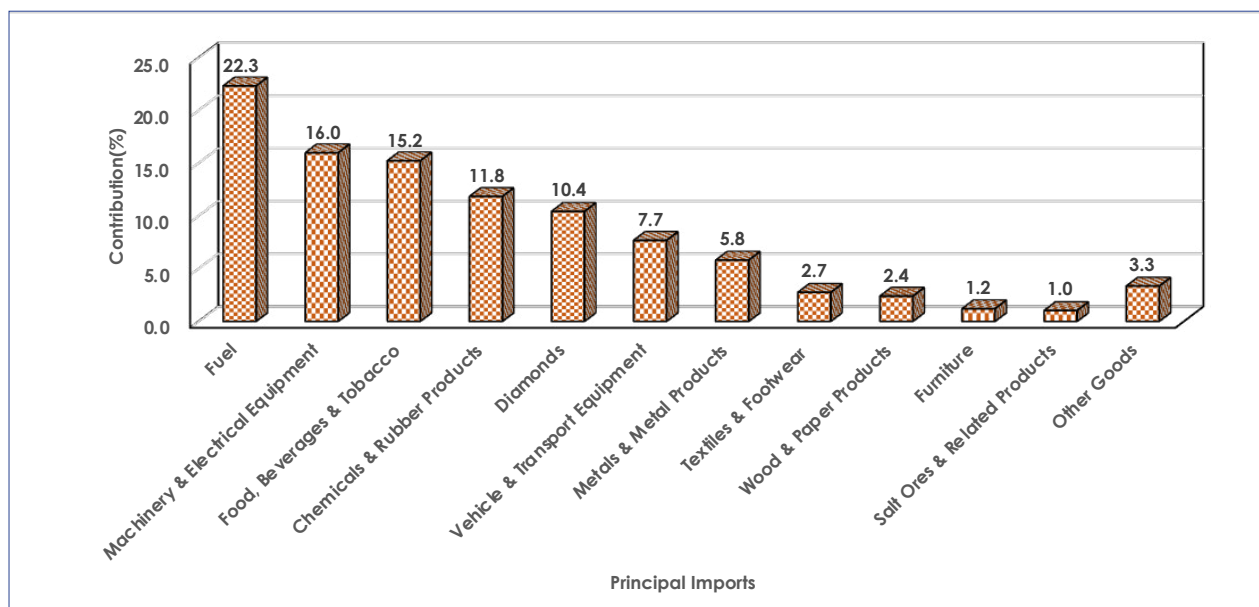
Principal commodity groups refer to selections of related commodities grouped together to form major groups. Commodities forming a group may be of related chapters or commodities, for example 'Vehicles & Transport Equipment' combines vehicles and other equipment used for transport purposes.

In cases where it becomes a challenge to come up with further groups of related chapters or commodities, the remaining commodities are grouped together under the general category called 'Other'. This occurs when a commodity group's contribution to the total is minimal.

2.1 Principal Imports

Botswana received imports valued at P7, 260.2 million in February 2024. The top imported groups were Fuel; Machinery & Electrical Equipment; Food, Beverages & Tobacco; and Chemicals & Rubber Products. Fuel contributed 22.3 percent (P1, 620.3 million) followed by Machinery & Electrical Equipment and Food, Beverages & Tobacco at 16.0 percent (P1, 160.6 million) and 15.2 percent (P1, 105.5 million) to total imports respectively. Chemicals & Rubber Products and Diamonds contributed 11.8 percent (P859.7 million) and 10.4 percent (P756.8 million) respectively. Contributions made by other commodity groups can be viewed in [Table 2.1](#) and [Chart 2.1](#).

Chart 2.1: Composition of Principal Imports – February 2024 (Percentage)

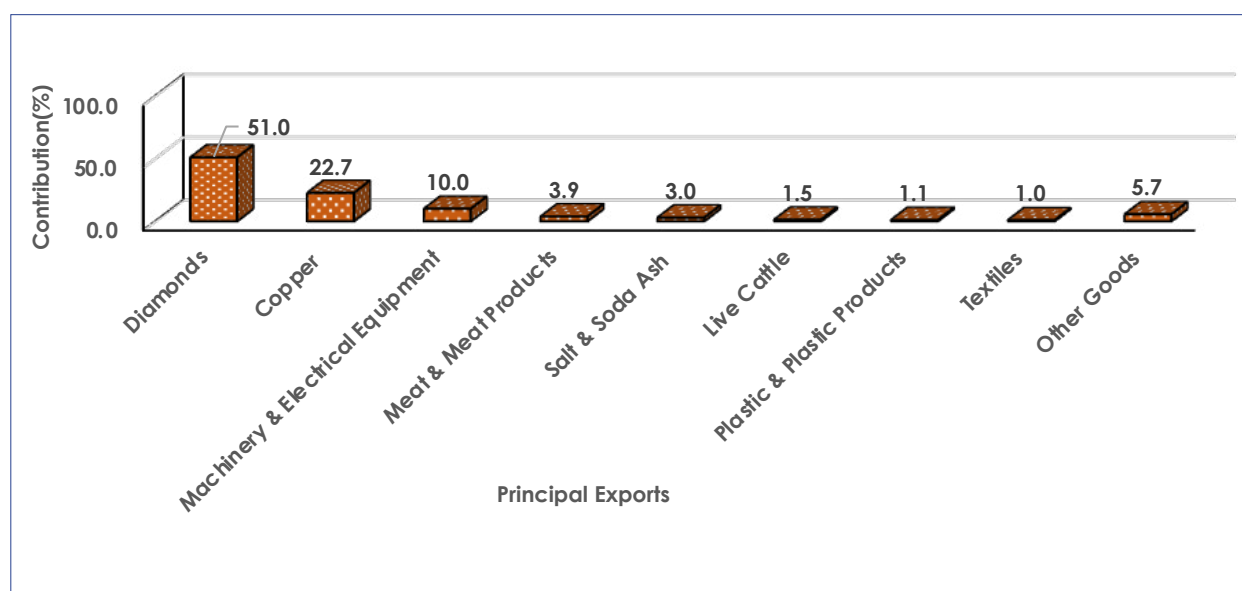


Note: 'Other Goods' here includes any other goods not displayed as in Table 2.1

2.2 Principal Exports

Botswana exported merchandise amounting to P2, 887.3 million. Diamonds was the leading export commodity group with a contribution of 51.0 percent (1, 473.4 million), followed by Copper and Machinery & Electrical Equipment with contributions of 22.7 percent (P656.1 million) and 10.0 percent (P290.1 million) in that order. Contributions made by other commodity groups are presented in [Table 2.2](#) and [Chart 2.2](#).

Chart 2.2 Composition of Principal Exports – February 2024 (Percentage)



Note: 'Other Goods' here includes any other goods not displayed as in Table 2.2

3.0 Direction of Trade

The direction of Trade analyses the value of merchandise trade disaggregated according to a country's primary trading partners. As a result the direction of trade outlines the last known destination for exports and sources of imports. Only major trading partners are considered individually, while smaller trading partners are grouped together under a general category. Trade by major partner countries, regions and principal commodity groups for imports and exports, during February 2024 appears in [Table 3.1 A](#) and [Table 3.2A](#), respectively. [Table 3.1B](#) (imports) and [Table 3.2B](#) (exports) show percentage distributions for major sources and destinations by principal commodity groups during the same month.

3.1 Imports by Major Trading Partner Countries and Regions

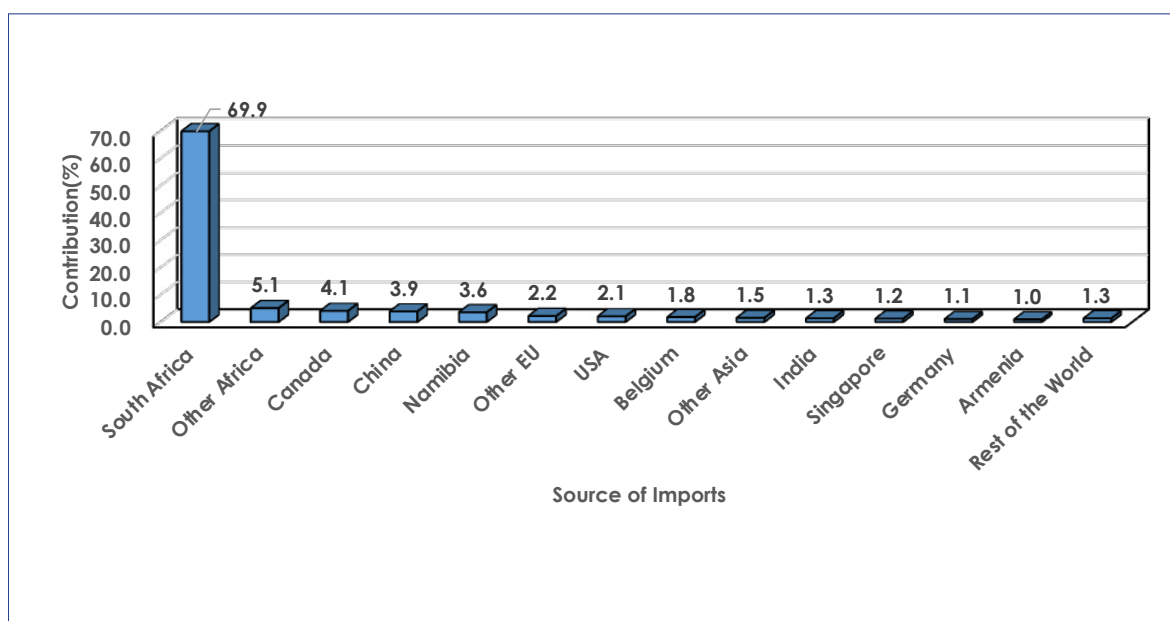
Botswana imported goods worth P7, 260.2 million, with the SACU region contributing largest at 74.3 percent (P5, 390.9 million) to the total, during the period under review. The top most imported commodity groups from the customs union were; Fuel; and Food, Beverages & Tobacco with contributions of 26.5 percent (P1, 426.2 million) and 19.6 percent (P1, 057.0 million), respectively. Machinery & Electrical Equipment and Chemicals & Rubber Products made contributions of 11.8 percent (P637.4 million) and 11.2 percent (P603.3 million) to total imports from the union respectively. Among the **SACU** member states, South Africa contributed largest at 69.9 percent (P5, 073.9 million) of total imports. Namibia followed with 3.6 percent (P258.5 million) of total imports, as displayed in [Table 3.1A](#) and [Table 3.1B](#).

During the period of assessment, Botswana imported goods totalling P648.7 million from Asia, which accounted for 8.9 percent of the total imports. The main commodity groups imported were Machinery & Electrical Equipment; Diamonds and Chemicals & Rubber Products with contributions of 39.6 percent (P256.8 million), 27.5 percent (P178.2 million) and 12.4 percent (P80.7 million) of total imports, respectively. China, India and Singapore contributed 3.9 percent (P280.5 million), 1.3 percent (P96.5 million) and 1.2 percent (P88.7 million) to total imports respectively as shown in [Table 3.1A](#) and [Table 3.1B](#).

Botswana received imports from the **EU** valued at P368.1million, constituting 5.1 percent of the total imports. Chemicals & Rubber Products, Machinery & Electrical Equipment and Diamonds were the key commodity groups imported from the Union at 37.0 percent (P136.4 million), 31.1 percent (P114.5 million) and 16.0 percent (P58.8 million) respectively ([Table 3.1A](#) and [Table 3.1B](#)).

Imports accounting for 4.1 percent (P295.5 million) of total imports were sourced from Canada during the month under review. The main import commodity group was Diamonds at 96.0 percent (P283.8 million) of total imports from that country. The USA supplied imports worth P150.2 million, accounting for 2.1 percent of Botswana's total imports, with Machinery & Electrical Equipment being the main commodity supplied at 73.6 percent (P110.5 million). Sources of imports during February 2024 can be viewed in [Table 3.1 A](#) and [Chart 3.1](#).

Chart 3.1: Imports by Major Trading Partner Countries & Regions – February 2024



'Rest of the World' includes all other Countries or Regions not specified as in Table 3.1A

3.2 Exports by Major Trading Partner Countries and Regions

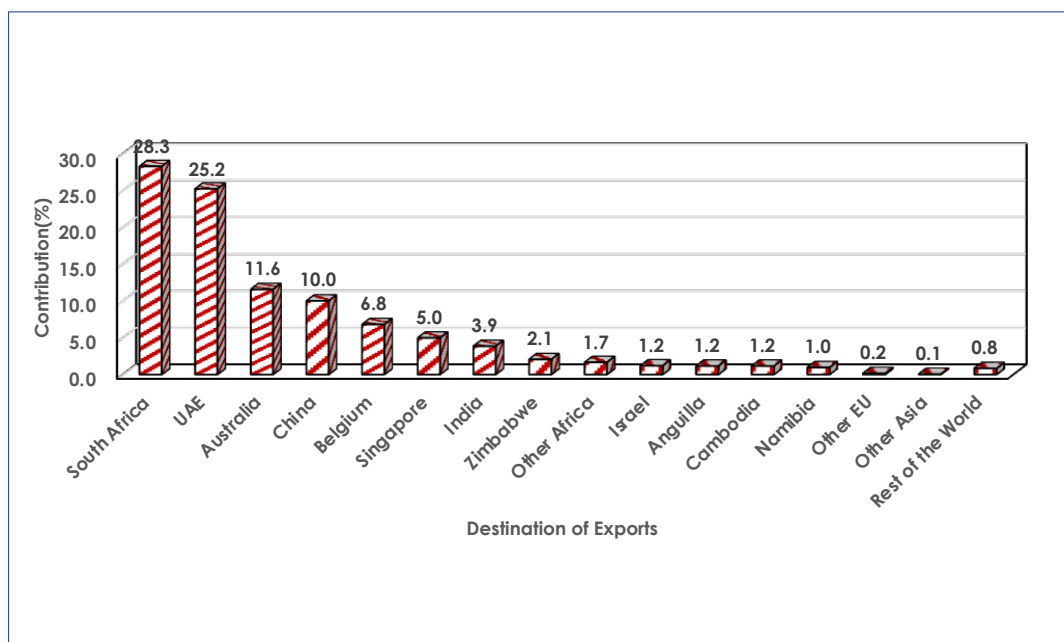
During the period under review, Botswana exported goods valued at P2, 887.3 million. Exports to Asia were the highest at 46.5 percent (P1, 342.1 million), rendering the block the main destination market for Botswana. Top exports destinations within Asia were the **UAE**, China and Singapore at 25.2 percent (P728.1million), 10.0 percent (P288.9 million) and 5.0 percent (P143.8 million) of total exports, respectively. Diamonds and Copper were the major commodity groups exported to Asia, at 78.2 percent (P1, 049.9 million) and 21.5 percent (P288.9 million) respectively as shown in **Table 3.2A** and **Table 3.2B**.

Exports destined to the **SACU** region accounted for 29.3 percent (P845.5 million) of total exports during the month under review. Machinery & Electrical Equipment, Diamonds and Meat & Meat Products were the major commodity groups exported to the customs union. These accounted for 30.8 percent (P260.7 million), 24.5 percent (P207.0 million) and 13.3 percent (P112.0 million) of total exports to the regional block respectively. South Africa was the main recipient of exports to SACU, at 28.3 percent (P816.9 million) of total exports, as in **Table 3.2A**.

The EU received exports amounting to P201.0 million, accounting for 7.0 percent of total exports in February 2024. Belgium received almost all the exports destined for the union, at 6.8 percent (P196.4 million) of total exports. Diamonds was the main commodity group exported to the EU at 97.5 percent (P196.1 million), as displayed in **Table 3.2A** and **Table 3.2B**.

During February 2024, Australia received exports worth P334.4 million, representing 11.6 percent of Botswana's total exports. Copper was the main commodity group exported to Australia at 99.8 percent (P333.7 million) of total exports to that country. Contributions made by other commodity groups are presented in **Table 3.2A** and **Table 3.2B**.

Chart 3.2: Exports by Major Trading Partner Countries & Regions – February 2024



Rest of the World' includes all other Countries or Regions not specified as in Table 3.2

4.0 Imports and Exports by Top imported and Exported Commodities

The top traded commodities for both flows are presented in **Table 4.1A** for imports and **Table 4.1B** for exports for February 2024. This is intended to present the most traded goods (excluding Diamonds) with a view to guiding users on opportunities to produce commodities for import substitution, possible exportation and economic diversification.

5.0 Imports and Exports by Mode of Transport

Trade by mode of transport refers to categorising trade activities based on the method of transportation used to move goods between countries or regions. This classification helps in understanding the flow of goods across borders and can provide insights into trade patterns, identifying bottlenecks and infrastructure needs and can be used as guidance in formulating transport policies. Active modes of transport mainly used in Botswana for movement of international merchandise trade are Air, Road and Rail. **Table B** presents statistics relating to modes of transport while **Chart B** gives the graphical illustration.

During the month under review, goods valued at P1, 518.3 million, representing 52.6 percent of total exports, were transported by Air. Goods exported by Road and Rail accounted for 46.7 percent (P1, 349.2 million) and 0.7 percent (P19.3 million) of total exports, respectively.

Imports representing 72.5 percent (P5, 260.6 million) of the monthly total were transported into the country by Road during the month under review.

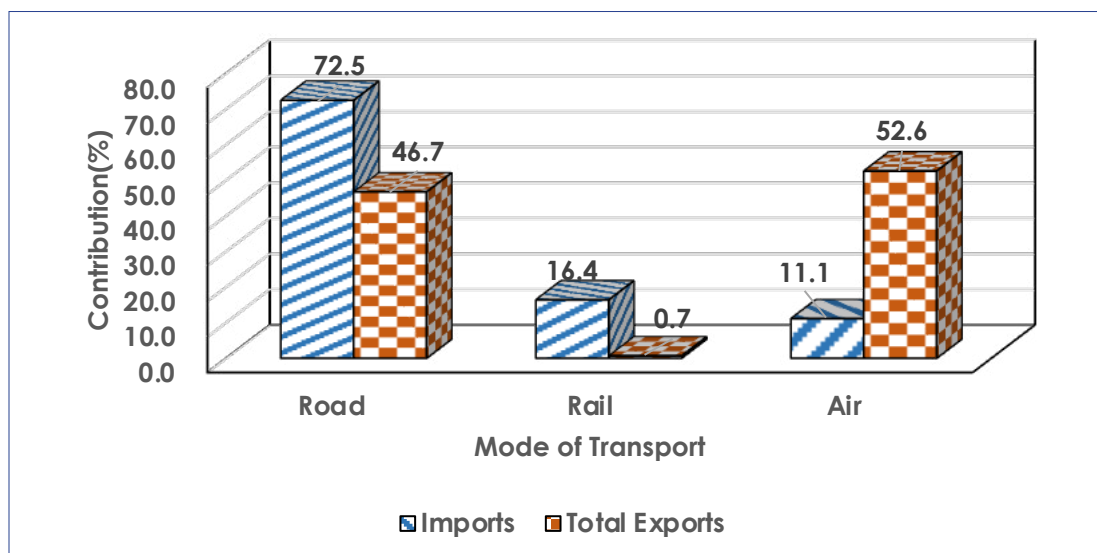
Imports transported by Rail amounted to P1, 190.2 million, representing 16.4 percent of the total, while imports transported by Air, worth 806.3 million, constituted 11.1 percent of the total.

Table B: Trade by Mode of Transport – February 2024 (Million Pula)

Flow Type	Imports		Total Exports	
Mode of Transport	BW Pula	%	BW Pula	%
Rail	1,190.2	16.4	19.3	0.7
Road	5,260.6	72.5	1,349.2	46.7
Air	806.3	11.1	1,518.3	52.6
Other Modes	3.1	0.0	0.5	0.0
Total	7,260.2	100.0	2,887.3	100.0

"Other Modes..." includes Inland water ways and Postal service transport

Chart B: Trade by Mode of Transport – February 2024 (Percentage)



6.0 Transit Trade

Transit trade refers to the movement of goods from one country to another through a third country, without the goods being subject to customs duties and other import restrictions in the intermediary country. Essentially, it involves the transportation of goods across a country that lies between the country of origin and the final destination. Countries that serve as transit hubs often provide infrastructure and services to facilitate transit trade. These countries may benefit economically from transit trade through fees, tariffs, or other charges associated with transportation services or by stimulating economic activity related to trade and transportation.

Overall, the purpose of transit trade is to overcome geographical, logistical, and economic constraints to facilitate the movement of goods between countries or regions efficiently, cost-effectively and securely. It plays a crucial role in promoting international trade, economic development, and regional integration.

Countries involved in transit trade typically have agreements and protocols in place to govern the movement of goods through their territory without the imposition of customs duties and other trade barriers. This helps to streamline the transportation of goods and reduce logistical challenges for businesses engaged in international trade.

Transit trade is subject to compliance with specific regulations and documentation requirements to ensure the proper monitoring and control of the movement of goods. Violations or misuse of transit trade arrangements can lead to penalties and legal consequences.

During February 2024, goods amounting to P16, 251.2 million transited through Botswana destined for various countries. Kazungula bridge, Martins Drift border post and Pioneer Gate handled goods accounting for 55.3 percent (P8, 981.3 million), 23.2 percent (P3, 768.0 million) and 8.9 percent (P1, 442.1 million) respectively, as displayed in **Table C1** and **Chart C1**.

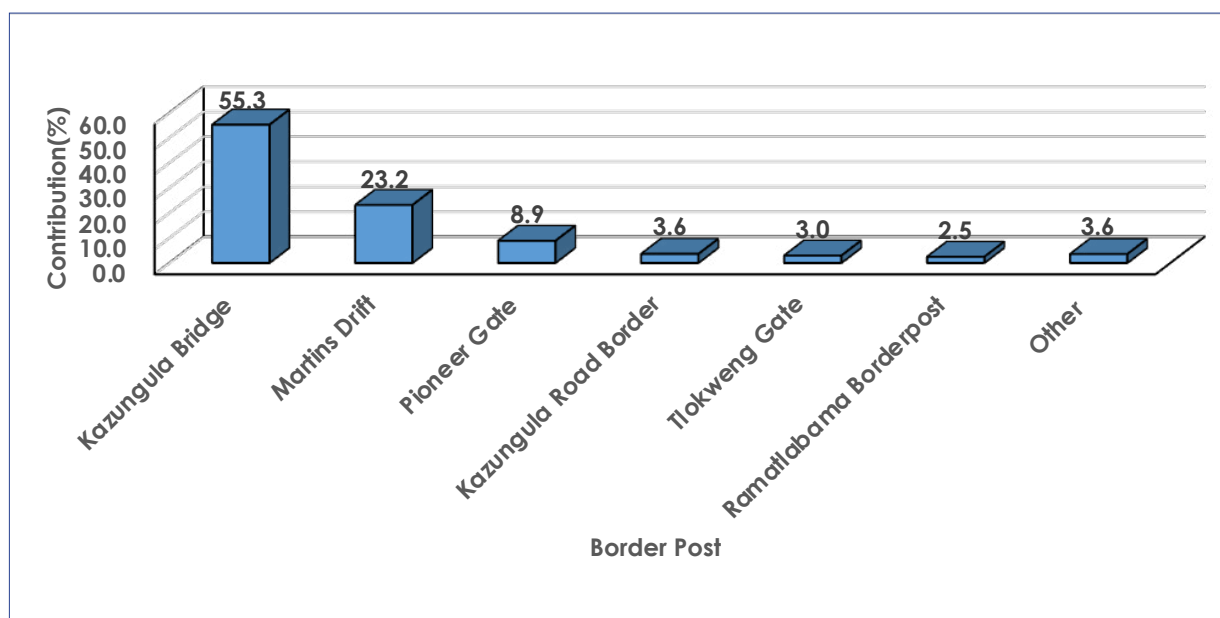
The top most transiting goods were chapters 74 (Copper and articles thereof) at 30.2 percent (P4, 903.6 million) and chapter 28 (Inorganic chemicals; organic and inorganic compounds of precious metals; of rare earth metals, of radio-active elements and of isotopes) at 21.5 percent (P3, 494.9 million). Chapter 99 (Commodities not specified according to kind) followed with a contribution of 16.7 percent (P2, 715.2 million), as shown in **Table C2** and **Chart C2**.

Table C1: Transit Trade by Border Post – February 2024 (Million Pula)

Border Post	BW Pula (Million)	%
Kazungula Bridge	8,981.3	55.3
Martins Drift	3,768.0	23.2
Pioneer Gate	1,442.1	8.9
Kazungula Road Border	588.5	3.6
Tlokweng Gate	482.6	3.0
Ramatlabama Borderpost	405.5	2.5
Other	583.3	3.6
Total	16,251.2	100.0

“Other Border Posts...” includes all border posts in Botswana not displayed on Table C1

Chart C1: Transit Trade by Border Post – February 2024 (Percentage)

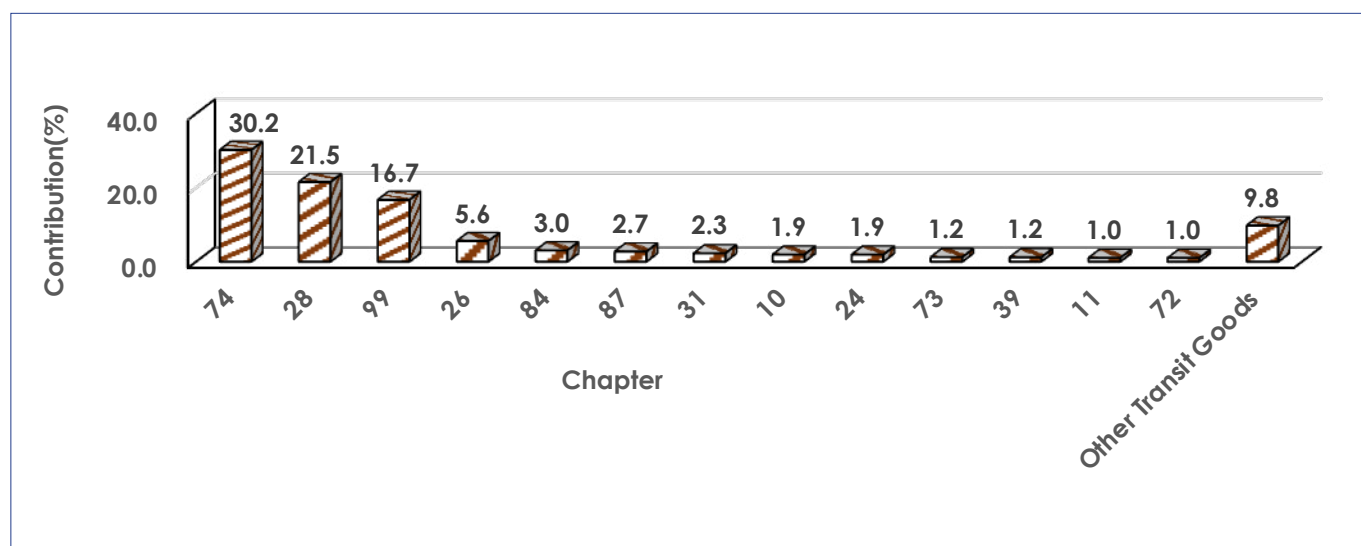


“Other Border Posts...” includes all border posts in Botswana not displayed on Chart C1

Table C2: Transit by Chapter – February 2024 (Million Pula)

Rank	Chapter	Description	BW Pula (Million)	%
1	74	Copper and articles thereof	4,903.6	30.2
2	28	Inorganic chemicals; organic and inorganic compounds of precious metals; of rare earth metals, of radioactive elements and of isotopes	3,494.9	21.5
3	99	Commodities not specified according to kind	2,715.2	16.7
4	26	Ores, slag and ash	904.5	5.6
5	84	Nuclear reactors, boilers, machinery and mechanical appliances; parts thereof	495.4	3.0
6	87	Vehicles; other than railway or tramway rolling stock, and parts and accessories thereof	442.5	2.7
7	31	Fertilizers	367.5	2.3
8	10	Cereals	312.4	1.9
9	24	Tobacco and manufactured tobacco substitutes	310.5	1.9
10	73	Iron or steel articles	197.6	1.2
11	39	Plastics and articles thereof	193.4	1.2
12	11	Products of the milling industry; malt, starches, inulin, wheat gluten	168.5	1.0
13	72	Iron and steel	160.6	1.0
Top Transit Goods			14,666.7	90.2
Other Transit Goods			1,584.5	9.8
Total Transit Goods			16,251.2	100.0

Chart C2: Transit Trade by Chapter – February 2024 (Percentage)



Other... includes all chapters not displayed on Chart C2

Table 1.0: Total Merchandise Trade – January 2022 to February 2024 (Million Pula)

Period \ Indicators	Imports CIF	Imports FOB	Freight	Insurance	Domestic Exports	Re-Exports	Total Exports	Trade Balance
Jan_2022	7,288.5	6,974.5	312.2	1.9	8,446.3	0.0	8,446.3	1,157.8
Feb	8,277.2	7,936.8	338.2	2.2	8,842.9	0.1	8,843.0	565.8
Mar	10,020.5	9,625.8	392.2	2.4	8,550.0	0.3	8,550.2	(1,470.2)
Q1	25,586.2	24,537.1	1,042.6	6.5	25,839.2	0.3	25,839.6	253.3
Apr	6,979.1	6,672.2	304.9	1.9	6,606.8		6,606.8	(372.3)
May	8,578.0	8,253.4	322.9	1.7	9,045.2	0.1	9,045.3	467.3
Jun	8,882.8	8,348.4	532.6	1.8	10,403.3	1.6	10,404.9	1,522.2
Q2	24,439.9	23,274.0	1,160.5	5.4	26,055.3	1.7	26,057.1	1,617.2
Jul	8,286.2	7,935.5	349.1	1.6	10,061.1	0.9	10,062.0	1,775.8
Aug	7,167.0	6,824.9	339.6	2.5	10,913.0	1.7	10,914.7	3,747.7
Sep	12,083.0	11,749.0	331.9	2.0	8,887.6	0.0	8,887.6	(3,195.4)
Q3	27,536.2	26,509.4	1,020.7	6.1	29,861.7	2.6	29,864.3	2,328.1
Oct	7,233.0	6,920.6	310.9	1.4	4,268.7	0.0	4,268.7	(2,964.3)
Nov	7,144.0	6,806.6	335.7	1.7	8,573.4	22.6	8,596.0	1,451.9
Dec	7,959.5	7,661.4	295.9	2.2	7,899.5	0.7	7,900.2	(59.4)
Q4	22,336.6	21,388.7	942.5	5.4	20,741.6	23.3	20,764.9	(1,571.7)
Total_2022	99,898.9	95,709.2	4,166.2	23.5	102,497.8	28.0	102,525.8	2,626.9
Jan_2023	6,030.7	5,749.9	279.3	1.6	7,253.4		7,253.4	1,222.7
Feb	7,002.3	6,707.7	293.0	1.6	6,088.5	6.1	6,094.6	(907.7)
Mar	7,251.8	6,933.8	316.0	1.9	8,447.5	5.7	8,453.2	1,201.5
Q1	20,284.8	19,391.4	888.3	5.1	21,789.5	11.7	21,801.2	1,516.4
Apr	6,215.8	5,937.7	276.7	1.4	6,631.1	2.7	6,633.8	418.0
May	6,841.0	6,527.8	312.1	1.1	8,917.9	3.4	8,921.3	2,080.3
Jun	6,947.2	6,621.2	323.9	2.1	7,592.9	0.5	7,593.4	646.2
Q2	20,004.0	19,086.6	912.8	4.6	23,141.8	6.6	23,148.4	3,144.5
Jul	7,172.6	6,852.9	318.0	1.7	8,159.7	0.1	8,159.8	987.2
Aug	7,198.8	6,863.3	333.6	1.9	7,849.2	0.5	7,849.7	650.9
Sep	8,470.6	8,127.1	341.8	1.6	5,093.7	0.1	5,093.8	(3,376.8)
Q3	22,841.9	21,843.3	993.4	5.2	21,102.7	0.6	21,103.3	(1,738.6)
Oct	8,572.1	8,216.4	354.1	1.6	3,908.8	3.7	3,912.5	(4,659.6)
Nov	9,736.6	9,363.1	370.7	2.8	3,237.7	0.4	3,238.2	(6,498.4)
Dec	6,683.8	6,387.3	294.5	2.0	4,943.8	0.8	4,944.7	(1,739.1)
Q4	24,992.4	23,966.8	1,019.3	6.3	12,090.4	5.0	12,095.3	(12,897.1)
Total_2023	88,123.1	84,288.1	3,813.9	21.1	78,124.4	23.9	78,148.3	(9,974.8)
Jan_2024	7,700.3	7,382.1	316.0	2.2	4,913.7	0.0	4,913.7	(2,786.6)
Feb	7,260.2	6,943.4	315.2	1.7	2,887.1	0.2	2,887.3	(4,372.9)
Change	(440.1)	(438.7)	(0.8)	(0.6)	(2,026.6)	0.2	(2,026.4)	(1,586.3)
% Change	(5.7)	(5.9)	(0.3)	(25.0)	(41.2)	2,512.5	(41.2)	56.9

Change: Difference between the Current and Previous month

Table 2.1: Principal Imports Commodity Groups – January 2022 to February 2024 (Million Pula)

Period \ HS	Chemicals & Rubber Products	Diamonds	Food, Beverages & Tobacco	Fuel	Furniture	Machinery & Electrical Equipment	Metals & Metal Products	Salt Ores & Related Products	Textiles & Footwear	Vehicles & Transport Equipment	Wood & Paper Products	Other Goods	Total Goods
Jan_2022	1,075.5	2,225.2	877.0	1,089.3	39.3	788.9	281.1	60.4	132.1	429.8	130.9	159.0	7,288.5
Feb	628.7	3,295.7	876.5	1,046.3	61.9	1,003.3	351.1	58.9	185.0	429.2	142.2	198.3	8,277.2
Mar	859.1	3,712.3	1,183.1	1,437.6	68.3	1,053.1	509.5	63.7	212.3	514.2	165.7	241.5	10,020.5
Q1	2,563.3	9,233.3	2,936.6	3,573.3	169.4	2,845.3	1,141.8	183.0	529.4	1,373.1	438.8	598.9	25,586.2
Apr	673.3	1,674.8	903.2	1,410.2	61.4	931.9	373.0	58.3	165.3	392.6	140.8	194.2	6,979.1
May	848.8	2,742.7	900.1	1,439.1	105.4	1,106.2	409.1	70.1	182.1	388.9	150.8	234.7	8,578.0
Jun	809.0	1,128.2	2,314.3	1,723.0	69.7	1,136.8	356.0	68.1	166.4	720.4	148.4	242.5	8,882.8
Q2	2,331.1	5,545.6	4,117.7	4,572.3	236.5	3,174.9	1,138.0	196.6	513.8	1,501.9	440.0	671.4	24,439.9
Jul	695.2	1,548.2	978.8	2,295.6	89.4	1,022.1	369.4	67.9	204.4	620.0	163.7	231.4	8,286.2
Aug	738.1	903.9	1,047.4	1,734.4	72.9	965.3	384.0	78.5	215.9	514.8	183.1	328.7	7,167.0
Sep	854.5	5,769.1	1,038.5	1,469.3	74.9	1,100.7	391.2	65.2	215.9	629.5	194.8	279.6	12,083.0
Q3	2,287.7	8,221.2	3,064.7	5,499.2	237.2	3,088.1	1,144.6	211.7	636.2	1,764.2	541.6	839.7	27,536.2
Oct	750.3	1,309.1	1,032.6	1,499.6	80.9	1,066.5	326.6	61.3	203.7	471.5	160.9	270.0	7,233.0
Nov	970.2	641.5	1,175.9	1,521.8	83.0	1,070.4	381.7	63.0	265.5	484.9	193.9	292.3	7,144.0
Dec	767.2	2,351.7	1,013.6	1,670.7	77.4	751.0	313.3	50.5	167.3	367.6	157.9	271.2	7,959.5
Q4	2,487.8	4,302.3	3,222.2	4,692.0	241.3	2,887.8	1,021.6	174.7	636.4	1,324.1	512.8	833.5	22,336.6
Total_2022	9,669.9	27,302.5	13,341.1	18,336.8	884.5	11,996.1	4,446.0	766.0	2,315.9	5,963.3	1,933.3	2,943.5	99,898.9
Jan_2023	640.3	988.8	907.0	1,338.4	46.6	850.5	279.7	56.3	133.4	418.9	134.9	235.8	6,030.7
Feb	771.5	1,352.4	1,259.9	1,288.5	57.3	894.0	376.9	46.6	180.7	421.3	142.8	210.3	7,002.3
Mar	795.4	818.8	1,221.3	1,511.1	68.3	1,111.2	394.4	65.4	235.4	565.1	179.3	286.0	7,251.8
Q1	2,207.2	3,160.0	3,388.3	4,138.0	172.2	2,855.7	1,051.1	168.3	549.5	1,405.3	457.1	732.1	20,284.8
Apr	768.6	765.9	1,093.6	1,366.8	55.9	817.1	352.0	63.6	197.8	382.4	140.3	211.7	6,215.8
May	901.9	874.4	1,013.1	1,311.5	75.3	1,058.1	390.9	77.3	187.3	550.2	161.8	239.4	6,841.0
Jun	904.3	779.6	1,153.2	1,321.6	80.3	1,120.4	422.4	100.1	153.4	527.6	176.9	207.4	6,947.2
Q2	2,574.8	2,419.9	3,259.9	3,999.9	211.5	2,995.6	1,165.3	240.9	538.5	1,460.3	479.1	658.5	20,004.0
Jul	823.9	811.5	1,077.1	1,437.5	67.3	1,014.1	418.1	63.4	173.8	873.6	167.4	244.8	7,172.6
Aug	916.9	597.0	1,255.8	1,486.1	79.8	1,132.5	431.7	74.8	204.6	572.7	183.6	263.4	7,198.8
Sep	779.4	1,435.5	1,321.3	1,823.0	87.8	1,186.0	449.1	64.7	228.6	625.3	171.8	298.1	8,470.6
Q3	2,520.1	2,844.0	3,654.1	4,746.5	235.0	3,332.7	1,298.9	202.9	607.1	2,071.6	522.8	806.3	22,841.9
Oct	859.2	1,436.6	1,474.9	1,798.8	84.6	1,092.5	409.5	61.5	267.5	561.4	186.1	339.5	8,572.1
Nov	1,151.4	2,276.0	1,436.4	1,854.9	89.7	1,130.9	419.1	68.4	277.5	576.5	198.0	257.9	9,736.6
Dec	759.8	1,097.0	1,045.0	1,404.0	79.6	856.6	366.9	82.7	161.8	467.9	159.2	203.2	6,683.8
Q4	2,770.5	4,809.5	3,956.3	5,057.7	254.0	3,079.9	1,195.6	212.5	706.8	1,605.7	543.4	800.6	24,992.4
Total_2023	10,072.6	13,233.5	14,258.6	17,942.1	872.6	12,263.9	4,710.9	824.6	2,401.8	6,542.9	2,002.3	2,997.4	88,123.1
Jan_2024	913.7	1,799.0	1,106.4	1,355.3	45.9	828.7	323.7	94.2	138.5	759.6	146.7	188.6	7,700.3
Feb	859.7	756.8	1,105.5	1,620.3	87.2	1,160.6	421.5	74.8	199.5	557.8	173.9	242.6	7,260.2
Change	(53.9)	(1,042.2)	(0.9)	265.0	41.2	331.9	97.8	(19.4)	61.0	(201.9)	27.2	54.0	(440.1)
%Contribution													
2023	11.4	15.0	16.2	20.4	1.0	13.9	5.3	0.9	2.7	7.4	2.3	3.4	100.0
Jan	11.9	23.4	14.4	17.6	0.6	10.8	4.2	1.2	1.8	9.9	1.9	2.4	100.0
Feb	11.8	10.4	15.2	22.3	1.2	16.0	5.8	1.0	2.7	7.7	2.4	3.3	100.0
% Change	(5.9)	(57.9)	(0.1)	19.6	89.8	40.1	30.2	(20.6)	44.1	(26.6)	18.5	28.6	(5.7)

Change: Difference between the Current and Previous month

Table 2.2 Principal Export Commodity Groups – January 2022 to February 2024 (Million Pula)

Period \ HS	Coal	Copper	Diamonds	Gold	Iron & Steel Products	Live Cattle	Machinery & Electrical Equipment	Meat & Meat Products	Plastic & Plastic Products	Salt & Soda Ash	Textiles	Vehicle & Transport Equipment	Other Goods	Total Goods
Jan_2022	9.7	200.7	7,702.8	35.8	24.3	106.0	94.5	3.8	22.9	68.5	16.1	22.3	138.7	8,446.3
Feb	6.9	208.7	8,060.0	19.2	17.4	106.0	181.0	8.4	25.7	59.8	17.5	39.4	91.6	8,841.6
Mar	9.7	244.0	7,525.8	47.2	20.6	105.9	296.3	15.8	29.1	76.9	20.8	34.9	122.0	8,549.2
Q1	26.3	653.5	23,288.6	102.2	62.3	318.0	571.9	28.0	77.8	205.2	54.4	96.6	352.3	25,837.1
Apr	13.2	367.3	5,586.4	31.0	21.9	88.0	211.9	12.3	28.5	42.1	23.2	69.0	111.8	6,606.8
May	16.2	314.6	7,882.7	0.0	22.8	133.9	241.4	19.4	30.9	75.2	34.0	34.5	239.6	9,045.1
Jun	17.6	257.9	9,261.0	43.8	26.9	137.7	237.6	22.2	37.3	93.2	25.5	58.0	185.6	10,404.4
Q2	46.9	939.8	22,730.1	74.8	71.6	359.6	690.9	54.0	96.8	210.5	82.7	161.5	537.0	26,056.3
Jul	16.1	363.8	8,819.4	35.5	23.8	97.4	243.8	14.2	34.0	72.6	23.9	35.5	281.5	10,061.6
Aug	15.7	449.9	9,646.0	30.1	20.1	85.1	217.3	8.8	31.4	125.5	33.1	55.9	195.2	10,914.1
Sep	16.8	304.5	7,760.6	14.1	19.8	14.1	279.3	3.5	36.3	109.1	25.4	116.2	187.6	8,887.3
Q3	48.6	1,118.2	26,226.0	79.7	63.8	196.6	740.5	26.5	101.7	307.3	82.4	207.5	664.2	29,863.0
Oct	14.9	468.9	2,997.5	16.8	20.8	140.9	210.8	4.4	33.8	89.7	29.8	30.0	209.5	4,267.8
Nov	14.3	319.3	7,392.2	16.3	19.9	85.3	295.7	16.2	28.7	91.3	35.0	45.8	236.0	8,596.0
Dec	16.6	466.1	6,669.5	18.3	10.8	82.7	130.8	7.7	22.2	101.9	35.5	110.0	228.2	7,900.2
Q4	45.7	1,254.2	17,059.3	51.4	51.4	308.9	637.4	28.2	84.7	282.9	100.3	185.8	673.7	20,764.0
Total_2022	167.5	3,965.7	89,304.0	308.2	249.2	1,183.0	2,640.7	136.6	361.0	1,005.9	319.8	651.5	2,227.2	102,520.4
Jan_2023	16.6	523.8	6,028.1	16.5	12.0	112.0	204.6	3.2	34.8	106.6	22.8	24.4	148.1	7,253.4
Feb	19.5	454.0	4,857.5	23.1	25.2	111.1	294.3	7.3	28.5	65.7	19.5	63.8	124.7	6,094.3
Mar	21.6	465.9	7,281.7	33.5	18.6	74.2	248.6	12.8	35.4	86.4	22.1	37.8	114.0	8,452.6
Q1	57.7	1,443.8	18,167.3	73.1	55.9	297.3	747.5	23.4	98.6	258.6	64.4	125.9	386.8	21,800.3
Apr	17.5	388.2	5,620.3	40.0	16.7	62.1	179.7	19.9	25.2	87.7	27.4	39.9	108.9	6,633.6
May	21.0	544.6	7,531.2	27.8	26.0	68.4	269.1	23.9	32.9	57.5	45.3	63.7	209.9	8,921.2
Jun	13.2	424.4	6,368.0	21.0	28.7	65.8	265.1	36.5	33.4	68.2	31.8	58.9	177.7	7,592.8
Q2	51.7	1,357.2	19,519.5	88.8	71.4	196.3	713.9	80.3	91.6	213.5	104.5	162.5	496.5	23,147.6
Jul	11.9	636.0	6,767.4	17.4	23.5	26.0	285.6	38.1	27.1	117.4	30.9	32.9	145.3	8,159.7
Aug	10.9	653.0	6,361.5	23.0	27.4	29.6	344.1	58.8	31.5	102.4	30.1	35.2	141.5	7,849.1
Sep	10.2	733.2	3,599.9	19.0	25.3	28.6	267.8	38.9	45.8	106.6	31.4	25.8	161.4	5,093.7
Q3	33.0	2,022.2	16,728.8	59.4	76.3	84.2	897.6	135.7	104.4	326.4	92.3	93.9	448.3	21,102.4
Oct	11.3	703.8	2,387.0	21.4	43.6	16.3	279.7	40.4	37.2	100.2	37.1	91.5	143.0	3,912.4
Nov	12.2	781.7	1,528.2	30.0	30.7	9.6	311.9	28.0	114.1	94.1	40.2	30.1	225.6	3,236.4
Dec	6.9	646.8	3,632.4	13.7	25.2	19.1	111.6	17.8	22.1	214.1	37.5	20.8	172.7	4,940.8
Q4	30.3	2,132.4	7,547.6	65.0	99.5	45.0	703.2	86.3	173.5	408.4	114.8	142.3	541.3	12,089.6
Total_2023	172.7	6,955.5	61,963.2	286.3	303.2	622.8	3,062.1	325.7	468.1	1,206.8	376.0	524.7	1,872.8	78,139.9
Jan_2024	9.5	864.4	3,327.1	20.5	12.2	31.8	209.4	21.4	24.4	140.8	26.7	70.2	91.6	4,849.9
Feb	22.9	656.1	1,473.4	6.1	20.0	42.5	290.1	113.8	33.1	86.8	27.8	21.1	93.6	2,887.3
Change	(2.8)	(229.8)	(1,875.0)	(14.5)	5.3	10.3	75.9	92.4	7.1	(55.1)	0.6	(49.7)	8.7	(2,026.4)
%Contribution														
2023	0.6	8.9	79.3	0.4	0.4	0.8	3.9	0.4	0.6	1.5	0.5	0.7	2.0	100.0
Jan	0.5	18.0	68.1	0.4	0.3	0.7	4.4	0.4	0.5	2.9	0.6	1.4	1.7	100.0
Feb	0.8	22.7	51.0	0.2	0.7	1.5	10.0	3.9	1.1	3.0	1.0	0.7	3.2	100.0
% Change	(10.9)	(25.9)	(56.0)	(70.4)	36.3	32.0	35.4	430.8	27.5	(38.8)	2.3	(70.2)	10.3	(41.2)

Change: Difference between the Current and Previous month

Table 2.3: Diamonds Trade – January 2022 to February 2024 (Million Pula)

Period \ HS	Imports						Total Exports					
	71021000	71022100	71022900	71023100	71023900	Total	71021000	71022100	71022900	71023100	71023900	Total
Jan_2022	0.0	11.8	0.0	1,922.0	291.4	2,225.2	0.0	8.2	0.0	6,726.8	967.7	7,702.8
Feb	0.0	18.6	0.0	2,756.0	521.1	3,295.7	0.0	53.2	0.0	6,729.9	1,276.9	8,060.0
Mar	512.4	14.4	0.0	2,526.8	658.7	3,712.3	0.0	28.3	0.0	5,919.0	1,578.5	7,525.8
Q1	512.4	44.8	0.0	7,204.8	1,471.3	9,233.3	0.0	89.8	0.0	19,375.8	3,823.1	23,288.6
Apr	0.0	0.1	0.0	851.9	822.8	1,674.8	0.0	29.1	0.0	4,311.7	1,245.5	5,586.4
May	0.0	295.3	0.0	1,619.3	828.0	2,742.7	0.0	20.7	0.0	6,034.3	1,827.7	7,882.7
Jun	374.7	1.6	0.0	183.0	568.9	1,128.2	0.0	41.0	0.0	7,577.3	1,642.7	9,261.0
Q2	374.8	296.9	0.0	2,654.3	2,219.7	5,545.6	0.0	90.8	0.0	17,923.4	4,715.9	22,730.1
Jul	371.6	0.0	0.0	239.7	936.9	1,548.2	0.0	44.3	0.0	7,382.3	1,392.8	8,819.4
Aug	323.3	0.4	0.0	168.5	411.8	903.9	0.0	62.0	0.0	7,573.2	2,010.9	9,646.0
Sep	415.3	0.8	0.0	5,088.8	264.3	5,769.1	0.0	37.8	0.0	5,827.4	1,895.4	7,760.6
Q3	1,110.2	1.2	0.0	5,496.9	1,613.0	8,221.2	0.0	144.1	0.0	20,782.8	5,299.0	26,226.0
Oct	349.2	0.1	0.0	591.5	368.4	1,309.1	0.0	0.0	0.0	1,644.0	1,353.5	2,997.5
Nov	21.2	7.0	0.0	321.7	291.6	641.5	2.4	55.4	0.0	5,656.9	1,677.5	7,392.2
Dec	534.2	4.8	0.0	1,092.2	720.5	2,351.7	5.9	36.7	0.0	5,405.1	1,221.9	6,669.5
Q4	904.6	11.9	0.0	2,005.3	1,380.5	4,302.3	8.3	92.1	0.0	12,705.9	4,253.0	17,059.3
Total_2022	2,902.0	354.8	0.0	17,361.3	6,684.4	27,302.5	8.3	416.8	0.0	70,788.0	18,091.0	89,304.0
Jan_2023	320.2	0.5	0.0	135.3	532.9	988.8	0.0	34.7	0.0	5,101.8	891.5	6,028.1
Feb	925.2	0.1	0.0	117.3	309.8	1,352.4	0.0	32.2	0.0	3,520.2	1,305.1	4,857.5
Mar	426.4	0.2	0.0	76.0	316.2	818.8	0.0	33.3	0.0	5,537.0	1,711.3	7,281.7
Q1	1,671.7	0.8	0.0	328.6	1,158.9	3,160.0	0.0	100.2	0.0	14,159.1	3,907.9	18,167.3
Apr	0.0	0.0	0.0	561.2	204.7	765.9	0.0	47.5	0.0	4,323.2	1,249.6	5,620.3
May	237.7	0.8	0.0	201.0	434.8	874.4	0.0	27.8	0.0	5,954.7	1,548.8	7,531.2
Jun	26.8	0.2	0.0	431.8	320.9	779.6	342.2	45.2	0.0	4,659.1	1,321.5	6,368.0
Q2	264.5	1.0	0.0	1,194.0	960.4	2,419.9	342.2	120.5	0.0	14,936.9	4,119.9	19,519.5
Jul	383.7	0.0	0.0	62.7	365.1	811.5	31.0	33.2	0.0	4,930.5	1,772.6	6,767.4
Aug	272.7	0.1	0.0	77.0	247.3	597.0	0.0	101.3	0.0	4,552.5	1,707.7	6,361.5
Sep	0.0	0.3	0.0	1,077.3	357.9	1,435.5	0.0	0.9	0.0	2,432.0	1,166.9	3,599.9
Q3	656.4	0.4	0.0	1,216.9	970.4	2,844.0	31.0	135.5	0.0	11,915.0	4,647.3	16,728.8
Oct	581.2	0.0	0.0	459.6	395.8	1,436.6	0.0	1.7	0.0	591.8	1,793.5	2,387.0
Nov	0.3	0.0	0.1	1,687.4	588.2	2,276.0	0.0	57.2	0.0	329.2	1,141.8	1,528.2
Dec	260.5	1.0	0.0	545.3	290.2	1,097.0	0.0	1.0	0.0	2,819.3	812.9	3,633.2
Q4	842.0	1.0	0.1	2,692.3	1,274.2	4,809.5	0.0	59.9	0.0	3,740.3	3,748.3	7,548.4
Total_2023	3,434.7	3.1	0.1	5,431.7	4,363.9	13,233.5	373.2	416.1	0.0	44,751.4	16,423.3	61,964.0
Jan_2024	373.2	0.0	0.0	1,268.5	157.3	1,799.0	0.0	3.3	0.0	2,978.4	366.8	3,348.4
Feb	283.8	0.2	0.0	357.6	115.3	756.8	0.0	1.0	0.0	1,310.8	161.6	1,473.4

Note: 71022100: Industrial Diamonds unworked or simply sawn, cleaved or bruited; 71022900: Industrial Diamonds, not mounted or set, NES; 71023100: Non-industrial diamonds unworked or simply sawn, cleaved or bruited; 71023900: Non-industrial diamonds, not mounted or set NES; 71021000: Unsorted diamonds; HS: Harmonised System Code; NES: Not Elsewhere Specified.

Table 3.1A: Total Imports by Country, Region and Principal Import Commodity Groups - February 2024 (Million Pula)

Partner \ HS	Chemicals & Rubber Products	Diamonds	Food, Beverages & Tobacco	Fuel	Furniture	Machinery & Electrical Equipment	Metals & Metal Products	Salt Ores & Related Products	Textiles & Footwear	Vehicles & Transport Equipment	Wood & Paper Products	Other Goods	Total Goods	% Contribution
South Africa	560.3	195.9	1,034.6	1,224.3	73.8	637.1	361.7	63.6	156.4	413.3	159.0	193.9	5,073.9	69.9
Namibia	0.3	30.9	11.0	201.8	0.1	0.3	1.0	11.1	0.0	1.4	0.2	0.4	258.5	3.6
Eswatini	42.7	0.0	11.4	0.0	0.0	0.0	0.0	0.0	0.9	0.0	2.4	0.0	57.3	0.8
Lesotho	0.0	0.0	0.0	0.0	0.0	0.0	0.0	0.0	1.1	0.0	0.0	0.0	1.1	0.0
SACU	603.3	226.8	1,057.0	1,426.2	73.9	637.4	362.7	74.7	158.4	414.7	161.6	194.4	5,390.9	74.3
Zambia	0.2	0.0	11.1	95.1	0.0	0.8	31.1	0.0	1.1	0.3	0.0	4.1	143.8	2.0
Mozambique	0.0	0.0	0.0	93.9	0.0	0.0	0.0	0.0	5.2	0.0	0.0	0.0	99.1	1.4
Other SADC	13.6	1.8	13.3	3.3	0.4	7.9	1.0	0.0	0.3	0.4	3.7	3.0	48.8	0.7
SADC	617.2	228.6	1,081.4	1,618.4	74.3	646.1	394.8	74.7	165.0	415.4	165.3	201.5	5,682.6	78.3
Other Africa	0.5	0.0	0.3	0.0	0.0	1.1	0.0	0.0	0.1	16.4	0.0	0.2	18.5	0.3
AFRICA	617.7	228.6	1,081.6	1,618.4	74.3	647.2	394.8	74.7	165.0	431.8	165.3	201.7	5,701.1	78.5
China	14.5	0.0	0.5	0.0	6.0	202.3	11.1	0.1	13.7	11.6	3.4	17.4	280.5	3.9
India	53.6	17.8	0.9	0.0	0.0	15.3	5.4	0.0	0.8	0.4	0.1	2.2	96.5	1.3
Singapore	0.0	86.8	0.2	0.0	0.0	0.7	0.0	0.0	0.1	0.6	0.0	0.3	88.7	1.2
Amenia	0.0	71.9	0.0	0.0	0.0	0.0	0.0	0.0	0.0	0.0	0.0	0.0	71.9	1.0
Other Asia	12.6	1.7	3.2	0.3	1.2	38.5	1.2	0.0	1.8	45.9	0.7	4.0	111.1	1.5
Asia	80.7	178.2	4.8	0.3	7.2	256.8	17.6	0.1	16.4	58.4	4.2	23.9	648.7	8.9
Belgium	44.9	58.8	0.9	0.8	0.0	24.0	0.0	0.0	0.0	0.0	0.0	0.3	129.8	1.8
Germany	33.1	0.0	1.7	0.0	0.0	16.4	0.7	0.0	15.3	4.8	3.4	4.5	79.9	1.1
Other EU	58.3	0.0	5.3	0.7	1.2	74.2	4.9	0.0	0.1	9.7	0.2	3.9	158.4	2.2
EU	136.4	58.8	7.9	1.6	1.2	114.5	5.6	0.0	15.4	14.5	3.6	8.7	368.1	5.1
Canada	7.0	283.8	0.0	0.0	0.0	3.1	0.9	0.0	0.6	0.1	0.0	0.1	295.5	4.1
USA	5.0	0.0	0.4	0.0	0.1	110.5	0.6	0.0	0.2	29.8	0.4	3.2	150.2	2.1
Rest of the World	13.1	7.4	10.8	0.0	4.5	28.4	2.0	0.0	1.9	23.2	0.4	5.0	96.7	1.3
World	859.7	756.8	1,105.5	1,620.3	87.2	1,160.5	421.5	74.8	199.5	557.8	173.9	242.6	7,260.2	100.0

Table 3.1B: Total Imports by Country, Region and Principal Import Commodity Groups - February 2024 (Million Pula)

Partner \ HS	Chemicals & Rubber Products	Diamonds	Food, Beverages & Tobacco	Fuel	Furniture	Machinery & Electrical Equipment	Metals & Metal Products	Salt Ores & Related Products	Textiles & Footwear	Vehicles & Transport Equipment	Wood & Paper Products	Other Goods	Total Goods
South Africa	11.0	3.9	20.4	24.1	1.5	12.6	7.1	1.3	3.1	8.1	3.1	3.8	100.0
Namibia	0.1	11.9	4.2	78.1	0.0	0.1	0.4	4.3	0.0	0.6	0.1	0.2	100.0
Eswatini	74.4	0.0	19.9	0.0	0.0	0.0	0.0	0.0	1.5	0.0	4.1	0.0	100.0
Lesotho	0.1	0.0	0.1	0.0	0.0	0.0	0.6	0.0	99.2	0.0	0.0	0.0	100.0
SACU	11.2	4.2	19.6	26.5	1.4	11.8	6.7	1.4	2.9	7.7	3.0	3.6	100.0
Zambia	0.2	0.0	7.7	66.1	0.0	0.5	21.6	0.0	0.8	0.2	0.0	2.9	100.0
Mozambique	0.0	0.0	0.0	94.8	0.0	0.0	0.0	0.0	5.2	0.0	0.0	0.0	100.0
Other SADC	28.0	3.7	27.3	6.7	0.8	16.3	2.1	0.0	0.7	0.9	7.5	6.2	100.0
SADC	10.9	4.0	19.0	28.5	1.3	11.4	6.9	1.3	2.9	7.3	2.9	3.5	100.0
Other Africa	2.9	0.0	1.4	0.0	0.0	5.9	0.0	0.0	0.4	88.5	0.0	0.9	100.0
AFRICA	10.8	4.0	19.0	28.4	1.3	11.4	6.9	1.3	2.9	7.6	2.9	3.5	100.0
China	5.2	0.0	0.2	0.0	2.1	72.1	4.0	0.0	4.9	4.1	1.2	6.2	100.0
India	55.5	18.4	1.0	0.0	0.0	15.9	5.6	0.0	0.8	0.4	0.1	2.2	100.0
Singapore	0.0	97.9	0.2	0.0	0.0	0.8	0.0	0.0	0.1	0.7	0.0	0.4	100.0
Amenia	0.0	100.0	0.0	0.0	0.0	0.0	0.0	0.0	0.0	0.0	0.0	0.0	100.0
Other Asia	11.3	1.5	2.9	0.2	1.1	34.7	1.0	0.0	1.7	41.3	0.6	3.6	100.0
Asia	12.4	27.5	0.7	0.0	1.1	39.6	2.7	0.0	2.5	9.0	0.7	3.7	100.0
Belgium	34.6	45.3	0.7	0.6	0.0	18.5	0.0	0.0	0.0	0.0	0.0	0.2	100.0
Germany	41.5	0.0	2.2	0.0	0.0	20.5	0.9	0.0	19.2	6.0	4.2	5.6	100.0
Other EU	36.8	0.0	3.3	0.5	0.7	46.8	3.1	0.0	0.1	6.1	0.1	2.5	100.0
EU	37.0	16.0	2.1	0.4	0.3	31.1	1.5	0.0	4.2	3.9	1.0	2.4	100.0
Canada	2.4	96.0	0.0	0.0	0.0	1.1	0.3	0.0	0.2	0.0	0.0	0.0	100.0
USA	3.3	0.0	0.3	0.0	0.0	73.6	0.4	0.0	0.1	19.8	0.3	2.1	100.0
Rest of the World	13.5	7.7	11.2	0.0	4.6	29.4	2.0	0.0	2.0	24.0	0.4	5.2	100.0
World	11.8	10.4	15.2	22.3	1.2	16.0	5.8	1.0	2.7	7.7	2.4	3.3	100.0

Table 3.2A: Total Exports by Country, Region and Principal Export Commodity Groups – February 2024 (Million Pula)

Period \ HS	Coal	Copper	Diamonds	Gold	Iron & Steel Products	Live Cattle	Machinery & Electrical Equipment	Meat & Meat Products	Plastic & Plastic Products	Salt & Soda Ash	Textiles	Vehicle & Transport Equipment	Other Goods	Total	% Contribution
South Africa	21.0	0.0	207.0	6.1	13.7	40.8	254.1	110.4	23.7	71.2	15.8	10.1	42.9	816.9	28.3
Namibia	1.9	0.0	0.0	0.0	1.2	0.0	6.6	1.6	1.7	0.0	0.8	5.0	9.3	27.9	1.0
Lesotho	0.0	0.0	0.0	0.0	0.0	0.0	0.0	0.0	0.0	0.0	0.0	0.2	0.1	0.3	0.0
Eswatini	0.0	0.0	0.0	0.0	0.0	0.0	0.0	0.0	0.0	0.0	0.0	0.2	0.0	0.3	0.0
SACU	22.9	0.0	207.0	6.1	14.9	40.8	260.7	112.0	25.4	71.2	16.6	15.5	52.3	845.5	29.3
Zimbabwe	0.0	0.0	0.0	0.0	1.2	0.0	15.9	0.0	3.9	6.7	10.8	3.7	17.2	59.5	2.1
Other SADC	0.0	0.0	0.0	0.0	2.4	1.6	7.3	1.8	3.8	8.9	0.3	1.6	19.0	46.6	1.6
SADC	22.9	0.0	207.0	6.1	18.4	42.5	283.9	113.8	33.1	86.8	27.8	20.8	88.5	951.6	33.0
Other Africa	0.0	0.0	0.0	0.0	0.0	0.0	0.2	0.0	0.0	0.0	0.0	0.0	0.4	0.6	0.0
Africa	22.9	0.0	207.0	6.1	18.4	42.5	284.1	113.8	33.1	86.8	27.8	20.8	88.9	952.2	33.0
UAE	0.0	0.0	728.6	0.0	0.0	0.0	0.0	0.0	0.0	0.0	0.0	0.0	0.0	728.6	25.2
China	0.0	288.9	0.0	0.0	0.0	0.0	0.0	0.0	0.0	0.0	0.0	0.0	0.0	288.9	10.0
Singapore	0.0	0.0	143.4	0.0	0.4	0.0	0.0	0.0	0.0	0.0	0.0	0.0	0.0	143.8	5.0
India	0.0	0.0	110.2	0.0	1.1	0.0	0.0	0.0	0.0	0.0	0.0	0.0	0.0	111.4	3.9
Israel	0.0	0.0	34.3	0.0	0.0	0.0	0.0	0.0	0.0	0.0	0.0	0.0	0.0	34.3	1.2
Cambodia	0.0	0.0	33.4	0.0	0.0	0.0	0.0	0.0	0.0	0.0	0.0	0.0	0.0	33.4	1.2
Other Asia	0.0	0.0	0.0	0.0	0.0	0.0	0.0	0.0	0.0	0.0	0.0	0.0	1.6	1.6	0.1
Asia	0.0	288.9	1,049.9	0.0	1.6	0.0	0.1	0.0	0.0	0.0	0.0	0.0	1.6	1,342.1	46.5
Belgium	0.0	0.0	196.1	0.0	0.0	0.0	0.0	0.0	0.0	0.0	0.0	0.0	0.4	196.4	6.8
Other EU	0.0	0.0	0.0	0.0	0.0	0.0	4.0	0.0	0.0	0.0	0.0	0.1	0.5	4.6	0.2
EU	0.0	0.0	196.1	0.0	0.0	0.0	4.0	0.0	0.0	0.0	0.0	0.1	0.8	201.0	7.0
Australia	0.0	333.7	0.0	0.0	0.0	0.0	0.7	0.0	0.0	0.0	0.0	0.0	0.0	334.4	11.6
Anguila	0.0	33.5	0.0	0.0	0.0	0.0	0.0	0.0	0.0	0.0	0.0	0.0	0.0	33.5	1.2
Rest of the World	0.0	0.0	20.4	0.0	0.0	0.0	1.2	0.0	0.0	0.0	0.0	0.2	2.2	24.1	0.8
World	22.9	656.1	1,473.4	6.1	20.0	42.5	290.1	113.8	33.1	86.8	27.8	21.1	93.6	2,887.3	100.0

Table 3.2A: Total Exports by Country, Region and Principal Export Commodity Groups – February 2024 (Million Pula)

Period \ HS	Coal	Copper	Diamonds	Gold	Iron & Steel Products	Live Cattle	Machinery & Electrical Equipment	Meat & Meat Products	Plastic & Plastic Products	Salt & Soda Ash	Textiles	Vehicle & Transport Equipment	Other Goods	Total
South Africa	2.6	0.0	25.3	0.7	1.7	5.0	31.1	13.5	2.9	8.7	1.9	1.2	5.2	100.0
Namibia	6.8	0.0	0.0	0.0	4.2	0.0	23.5	5.8	6.0	0.0	2.9	17.7	33.2	100.0
Lesotho	0.0	0.0	0.0	0.0	0.0	0.0	0.0	0.0	0.0	0.0	0.0	71.9	28.1	100.0
Eswatini	0.0	0.0	0.0	0.0	0.0	0.0	0.2	0.0	0.0	0.0	2.8	81.4	15.6	100.0
SACU	2.7	0.0	24.5	0.7	1.8	4.8	30.8	13.3	3.0	8.4	2.0	1.8	6.2	100.0
Zimbabwe	0.0	0.0	0.0	0.0	1.9	0.0	26.7	0.0	6.5	11.3	18.2	6.2	29.0	100.0
Other SADC	0.0	0.0	0.0	0.0	5.1	3.5	15.7	3.8	8.2	19.1	0.6	3.3	40.6	100.0
SADC	2.4	0.0	21.8	0.6	1.9	4.5	29.8	12.0	3.5	9.1	2.9	2.2	9.3	100.0
Other Africa	0.0	0.0	0.0	0.0	0.0	0.0	33.7	0.0	0.0	0.0	3.5	0.0	62.9	100.0
Africa	2.4	0.0	21.7	0.6	1.9	4.5	29.8	12.0	3.5	9.1	2.9	2.2	9.3	100.0
UAE	0.0	0.0	100.0	0.0	0.0	0.0	0.0	0.0	0.0	0.0	0.0	0.0	0.0	100.0
China	0.0	100.0	0.0	0.0	0.0	0.0	0.0	0.0	0.0	0.0	0.0	0.0	0.0	100.0
Singapore	0.0	0.0	99.7	0.0	0.3	0.0	0.0	0.0	0.0	0.0	0.0	0.0	0.0	100.0
India	0.0	0.0	99.0	0.0	1.0	0.0	0.0	0.0	0.0	0.0	0.0	0.0	0.0	100.0
Israel	0.0	0.0	99.9	0.0	0.0	0.0	0.1	0.0	0.0	0.0	0.0	0.0	0.0	100.0
Cambodia	0.0	0.0	100.0	0.0	0.0	0.0	0.0	0.0	0.0	0.0	0.0	0.0	0.0	100.0
Other Asia	0.0	0.0	0.0	0.0	0.0	0.0	1.1	0.0	0.0	0.0	0.0	0.0	98.9	100.0
Asia	0.0	21.5	78.2	0.0	0.1	0.0	0.0	0.0	0.0	0.0	0.0	0.0	0.1	100.0
Belgium	0.0	0.0	99.8	0.0	0.0	0.0	0.0	0.0	0.0	0.0	0.0	0.0	0.2	100.0
Other EU	0.0	0.0	0.0	0.0	0.0	0.0	88.1	0.0	0.0	0.0	0.1	1.5	10.3	100.0
EU	0.0	0.0	97.5	0.0	0.0	0.0	2.0	0.0	0.0	0.0	0.0	0.0	0.4	100.0
Australia	0.0	99.8	0.0	0.0	0.0	0.0	0.2	0.0	0.0	0.0	0.0	0.0	0.0	100.0
Anguila	0.0	100.0	0.0	0.0	0.0	0.0	0.0	0.0	0.0	0.0	0.0	0.0	0.0	100.0
Rest of the World	0.0	0.0	84.8	0.0	0.0	0.0	5.1	0.0	0.0	0.0	0.0	0.9	9.2	100.0
World	0.8	22.7	51.0	0.2	0.7	1.5	10.0	3.9	1.1	3.0	1.0	0.7	3.2	100.0

Table 4.1 A: Top Imported Goods (Excluding Diamonds) – February 2024 (Million Pula)

Rank	HS Code	HS Description	BW Pula	Contribution(%) Against Total Non Diamonds Imports	Contribution(%) Against Total Imports
1	27101230	Distillate fuel, as defined in Additional Note 1 (g)	574.1	8.8	7.9
2	27160000	ELECTRICAL ENERGY	535.9	8.2	7.4
3	27101202	Petrol, as defined in Additional Note 1 (b)	416.9	6.4	5.7
4	87032390	Other motor cars and other motor vehicles principally designed for the transport of persons	111.5	1.7	1.5
5	30049099	Other medicaments consisting of mixed or unmixed products for therapeutic or prophylactic purposes	100.5	1.5	1.4
6	84314990	Other parts suitable for use solely or principally with the machinery of headings 84.25 to 84.30:	78.5	1.2	1.1
7	84295200	Machinery with a 360 degrees revolving superstructure	77.3	1.2	1.1
8	84295190	Other Front-end shovel loaders:	72.3	1.1	1.0
9	25232900	Other Portland cement	68.3	1.1	0.9
10	85234900	OTHER Magnetic media	60.8	0.9	0.8
11	87042181	Other, double-cab, of a vehicle mass not exceeding 2 000 kg or a G.V.M. not exceeding 3 500 kg, or of a mass not exceeding 1 600 kg or a G.V.M. not exceeding 3 500 kg per chassis fitted with a cab	57.0	0.9	0.8
12	10059010	Dried Maize (Corn) kernels or grains fit for human consumption, not further prepared or processed and not packaged as seeds (excluding pop corn (ZEA MAYS EVERTA))	55.3	0.9	0.8
13	10079000	Other (Grain Sorghum)	55.2	0.8	0.8
14	85444990	OTHER Insulated (including enamelled or anodised) wire, cable (including co-axial cable)	52.3	0.8	0.7
15	38221900	Other Diagnostic or laboratory reagents on a backing, prepared diagnostic or laboratory reagents	46.3	0.7	0.6
16	10063000	Semi-milled or wholly milled rice, whether or not polished or glazed	44.5	0.7	0.6
17	87089990	OTHER Parts and accessories of the motor vehicles of headings 87.01 to 87.05	44.4	0.7	0.6
18	15121910	Sunflower-seed or safflower oil and fractions thereof, Marketed and supplied for use in the process of cooking food	43.1	0.7	0.6
19	87033390	Other Other vehicles, with only compression-ignition internal combustion piston engine (diesel or semi-diesel)NES	41.0	0.6	0.6
20	10019900	Other (of Wheat (excluding durum wheat) and Meslin)	39.7	0.6	0.5
21	30024190	Other Vaccines for human medicine	39.7	0.6	0.5
22	17011300	CANE SUGAR SPECIFIED IN SUBHEADING NOTE 2 TO THIS CHAPTER	38.9	0.6	0.5
23	84749000	Parts Machinery for sorting, screening, separating, washing, crushing, grinding, mixing or kneading earth, stone, ores or other mineral substances	34.6	0.5	0.5
24	34029000	Other (surface-active preparations, washing preparations (including auxiliary washing preparations) and cleaning preparations, whether or not containing soap, other than those of heading 34.01)	34.4	0.5	0.5
25	38249999	Other mixtures	32.6	0.5	0.4

Table 4.1 A: Top Imported Goods (Excluding Diamonds) – February 2024 (Million Pula) Continued

Rank	HS Code	HS Description	BW Pula	Contribution(%) Against Total Non Diamonds Imports	Contribution(%) Against Total Imports
26	85371090	Other Boards, panels, consoles, desks, cabinets and other bases	32.3	0.5	0.4
27	84071000	Aircraft engines	31.4	0.5	0.4
28	74081100	Copper wire Of which the maximum cross-sectional dimension exceeds 6 mm	31.1	0.5	0.4
29	44071100	Coniferous Wood sawn or chipped lengthwise, sliced or peeled, whether or not planed, sanded or finger-jointed, of a thickness exceeding 6 mm, Of pine (Pinus spp.)	31.0	0.5	0.4
30	84292000	GRADERS AND LEVELLERS	31.0	0.5	0.4
31	72081000	Copper wire In coils, not further worked than hot-rolled, with patterns in relief	30.2	0.5	0.4
32	33049990	Beauty or make-up preparations and preparations for the care of the skin (other than medicaments)	30.2	0.5	0.4
33	10059090	Other (Maize (Corn))	29.0	0.4	0.4
34	34012000	Soap in other forms	28.7	0.4	0.4
35	85171310	Telephone sets, including telephones for cellular networks or for other wireless networks; other apparatus for the transmission or reception of voice, images or other data, Designed for use when carried in the hand or on the person	27.9	0.4	0.4
36	84713090	Other portable automatic data processing machines, of a mass not exceeding 10 kg, consisting of at least a central processing unit, a keyboard and a display	27.8	0.4	0.4
37	22060081	Other fermented apple or pear beverages, unfortified, with an alcoholic strength of at least 2.5 per cent by volume but not exceeding 15 per cent by volume, With an alcohol content exceeding 5 per cent	27.7	0.4	0.4
38	87041090	Other new dumpers designed for off-highway use	26.9	0.4	0.4
39	30039090	"Other - Medicaments (excluding goods of heading 30.02, 30.05 or 30.06) consisting of two or more constituents which have been mixed together for therapeutic or prophylactic uses, not put up in measured doses or in forms or packings for retail"	26.8	0.4	0.4
40	23040000	Oil-cake and other solid residues, whether or not ground or in the form of pellets, resulting from the extraction of soyabean oil.	25.8	0.4	0.4
41	33021000	Mixtures of odoriferous substances and mixtures Of a kind used in the food or drink industries	25.4	0.4	0.4
42	39041000	Poly(vinyl chloride), not mixed with any other substances	24.1	0.4	0.3
43	22029990	Other non-alcoholic beverages, not including fruit or vegetable juices of heading 20.09)	23.8	0.4	0.3
44	22030090	Other Beer made from malt, With an alcohol content exceeding 5 per cent	23.0	0.4	0.3
45	87032490	Other Motor cars and other motor vehicles principally designed for the transport of persons (excluding those of heading 87.02), including station wagons and racing cars:	22.6	0.3	0.3
46	22030090	Other Beer made from malt, With an alcohol content exceeding 5 per cent	22.6	0.3	0.3
47	27101252	OTHER PREPARED LUBRICATING OILS	22.4	0.3	0.3
48	84295900	Other Front-end shovel loaders:	20.8	0.3	0.3
49	87100000	Tanks and other armoured fighting vehicles, motorised, whether or not fitted with weapons, and parts of such vehicles	20.5	0.3	0.3
50	63059090	Other Sacks and bags, of a kind used for the packing of goods, - Of other textile materials	20.2	0.3	0.3
Top 50 Imported Non Diamond Goods			3,418.1	56.0	47.1
Other Non Diamond Imports Goods			3,085.2	44.0	42.5
Total Non-Diamond Goods			6,503.4	100.0	89.6
Diamonds Imports			756.8		10.4
Total Imports			7,260.2		100.0

Table 4.1 B: Top Exported Goods (Excluding Diamonds) – February 2024 (Million Pula)

Rank	HS Code	HS Description	BW Pula	Contribution(%) Against Total Non Diamonds Imports	Contribution(%) Against Total Imports
1	26030000	COPPER ORES AND CONCENTRATES	656.1	46.4	22.7
2	85443000	Ignition wiring sets and other wiring sets of a kind used in vehicles, aircraft or ships	185.0	13.1	6.4
3	02023090	Other (boneless meat of bovine animals, frozen)	111.7	7.9	3.9
4	28362000	DISODIUM CARBONATE	68.5	4.8	2.4
5	85444290	Electric conductors, for a voltage <= 1.000 V, insulated, fitted with connectors, n.e.s. (other than of a kind used for telecommunications)	39.7	2.8	1.4
6	01022100	Pure-bred breeding animals (cattle)	22.9	1.6	0.8
7	39172300	Tubes, pipes and hoses, rigid, Of polymers of vinyl chloride	20.1	1.4	0.7
8	01022900	Other (cattle)	19.5	1.4	0.7
9	25010090	Other Salt, pure sodium chloride or sea water	17.7	1.3	0.6
10	27011200	Bituminous coal	16.7	1.2	0.6
11	63026090	Other Toilet linen and kitchen linen, of terry towelling or similar terry fabrics, of cotton	13.2	0.9	0.5
12	30024200	Vaccines for veterinary medicine	11.1	0.8	0.4
13	85071099	Other lead-acid, of a kind used for starting piston engines	6.8	0.5	0.2
14	68101100	Building blocks and bricks	6.6	0.5	0.2
15	27011900	Other coal	6.2	0.4	0.2
16	72142000	Other bars and rods of iron or non-alloy steel - Containing indentations, ribs, grooves or other deformations produced during the rolling process or twisted after rolling	6.1	0.4	0.2
17	71081200	Other unwrought forms	6.1	0.4	0.2
18	74040090	Other copper waste and scrap	5.7	0.4	0.2
19	84314300	PARTS FOR BORING OR SINKING MACHINERY OF SUBHEADING 8430.41 OR 8430.49	5.7	0.4	0.2
20	85446090	Electric conductors for a voltage > 1.000 V, insulated, not with copper conductors, n.e.s	5.6	0.4	0.2
21	84314990	Other parts suitable for use solely or principally with the machinery of headings 84.25 to 84.30:	5.5	0.4	0.2
22	11031390	Other (Groats and meal of maize (corn))	5.5	0.4	0.2
23	87041090	Other new dumpers designed for off-highway use	4.5	0.3	0.2
24	87032390	Other motor cars and other motor vehicles principally designed for the transport of persons	4.5	0.3	0.2
25	12060000	Sunflower seeds, whether or not broken	4.4	0.3	0.2

Table 4.1 B: Top Exported Goods (Excluding Diamonds) – February 2024 (Million Pula) Continued.

Rank	HS Code	HS Description	BW Pula	Contribution(%) Against Total Non Diamonds Imports	Contribution(%) Against Total Imports
26	30049099	Other medicaments consisting of mixed or unmixed products for therapeutic or prophylactic purposes	4.4	0.3	0.2
27	64059090	Other footwear	4.1	0.3	0.1
28	76020090	Other aluminium waste and scrap	3.7	0.3	0.1
29	62171090	Other clothing accessories	3.6	0.3	0.1
30	84295900	Other Front-end shovel loaders:	3.3	0.2	0.1
31	72043000	WASTE AND SCRAP OF TINNED IRON OR STEEL	3.2	0.2	0.1
32	24022090	Other Cigarettes containing tobacco	3.0	0.2	0.1
33	63019000	Other blankets and travelling rugs	2.6	0.2	0.1
34	74040010	Copper waste and scrap:Of refined copper	2.6	0.2	0.1
35	87089990	Other parts and accessories of the motor vehicles of headings 87.01 to 87.05	2.5	0.2	0.1
36	85442090	Other Co-axial cable and other co-axial electric conductors NES	2.5	0.2	0.1
37	85285990	Other monitors nes	2.4	0.2	0.1
38	73219000	Parts Stoves, ranges, grates, cookers (including those with subsidiary boilers for appliances, and parts thereof, of iron or steel	2.4	0.2	0.1
39	99990010	Personal effects, new or used	2.3	0.2	0.1
40	72165000	Other angles, shapes and sections, not further worked than hot-rolled, hot-drawn or extruded	2.3	0.2	0.1
41	11031310	Maize meal not further processed other than by the addition of minerals and vitamin	2.2	0.2	0.1
42	58081000	BRAIDS IN THE PIECE	2.2	0.2	0.1
43	85287290	OTHER Reception apparatus for television	2.2	0.2	0.1
44	94069090	Other Prefabricated buildings	2.1	0.2	0.1
45	23021000	Bran, sharps and other residues, Of maize (corn)	2.1	0.1	0.1
46	42034000	Other clothing accessories	2.0	0.1	0.1
47	85284910	Colour, with a screen size not exceeding 3 m x 4 m	2.0	0.1	0.1
48	85176220	Videophone	1.9	0.1	0.1
49	72042100	Waste and scrap of cast iron Of stainless steel	1.9	0.1	0.1
50	60069000	Other knitted or crocheted fabrics	1.9	0.1	0.1
Top 50 Exported Non-Diamond Goods			1,321.0	100.0	45.8
Other Non-Diamond Exports Goods			92.9	7.0	3.2
Total Non-Diamond Exports			1,413.9	107.0	49.0
Diamonds Exports			1,473.4		51.0
Total Exports			2,887.3		100.0

8.0 Concepts, Sources and Methods

IMTS are compiled by the International Merchandise Trade Statistics Section of Statistics Botswana, and uses the General Trade system. International Merchandise Trade refers to external trade in goods only. International Service Trade Statistics (ISTS) are however not compiled by this section. The primary source of international merchandise trade data is the Customs & Excise Division at the Botswana Unified Revenue Service (BURS). The Customs & Excise Division is responsible for data capture for both computerised and manual borders, and the monthly raw data files are transferred to Statistics Botswana for data processing.

Imports are valued CIF (cost, insurance & freight), while exports are valued FOB (free on board). The value of imports includes transport and insurance costs to the importing country. The Exports value consists only of the value of goods as they leave the exporting country.

8.1 Time of Recording of Trade

IMTS is compiled using date of recording of trade as opposed to date of assessment of goods by customs. This means that as goods cross the border, trade is recorded and this is the reference month for compilation of IMTS. Some of these goods may however be held by customs for some time pending final assessment for tax or duty purposes.

If the final assessment is done later, for example two or three months, or even more, after the goods had crossed the border, the affected trade will then update trade for the particular month when the goods crossed the border, therefore it does not form part of trade for the month during which the final assessment was done. This is mostly common with imports. Revision of data for the month preceding the one under review will normally show high values as compared to revisions for other months due to more goods (from the previous month) being released after final assessment.

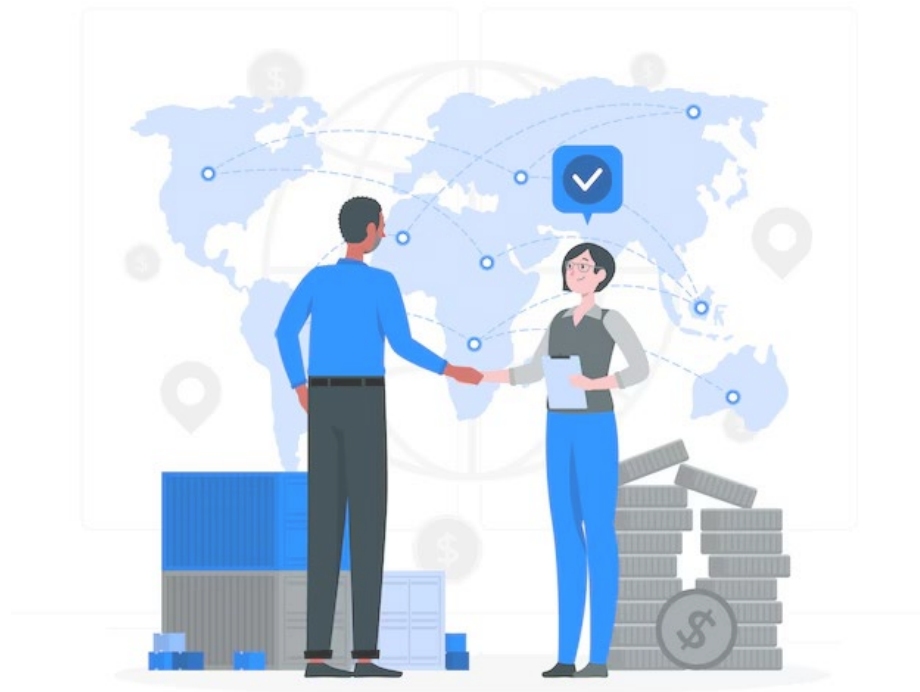
8.2 Concepts and Definitions

- i. **Domestic Exports:** These are goods originating from the compiling country, being permanently exported out of the country for consumption in the outside world. This includes products from customs inwards processing; for example, if a country imports wheat, processes the wheat into bread flour and exports the bread flour and bye products from the milling process, these will all leave the country as domestic exports.
- ii. **Re - Exports:** These are exports of foreign goods that were initially recorded as imports into the compiling country. These goods are exported in the same state that they came in except for wear and tear. An example will be re-exportation of a motor vehicle that was initially imported into the compiling country and after being used it is now being exported to a foreign country.
- iii. **Total exports:** This is the sum of domestic exports and re-exports
- iv. **Imports:** These are goods imported from the outside world, into the compiling country, for local consumption. This includes re-importation of locally produced goods that were initially exported and are now being imported back into the country.
- v. **Trade Balance (Net Export):** This refers to the total value of goods exported minus the total value of goods imported by a given economy in a given period of time. A positive trade balance (trade surplus) indicates that a country is exporting more in value terms than it is importing. A negative trade balance (trade deficit) indicates that the country is importing more than it is exporting.

8.3 Exclusions from IMTS

- i. **Goods in Transit** - This is trade that is simply passing through the compiling country solely for the purpose of being transported to another country.
- ii. **Goods temporarily admitted or dispatched** - These are goods that, at the time of admission/dispatch, are intended to stay in the receiving country temporarily and that after their stay they will be returned in the same state. These goods include display equipment for trade fairs and exhibitions, commercial samples, means of transport, containers, equipment for working, etc.
- iii. **Monetary Gold**- This is gold to which the monetary authorities have title and is held as reserve assets.
- iv. **Issued banknotes and securities and coins in circulation**-These goods represent evidence of financial claims and are excluded from IMTS

The above list of exclusions from IMTS is, however, not exhaustive and only a few that are common, simple, straightforward and easy to understand have been picked as examples.



INTERNATIONAL MERCHANDISE TRADE STATISTICS

Monthly Digest- February 2024



Private Bag 0024, Gaborone
Tel: 3671300 Fax: 3952201
Toll Free: 0800 600 200

Private Bag F193,
Francistown
Tel: 241 5848 Fax: 241 7540

Private Bag 32
Ghanzi
Tel: 371 5723 Fax: 659 7506

Private Bag 47
Maun
Tel: 371 5716 Fax: 686 4327

E-mail: info@statsbots.org.bw Website: <http://www.statsbots.org.bw>



STATISTICS BOTSWANA