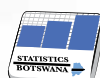


ELECTRICITY GENERATION AND DISTRIBUTION

STATS BRIEF, FOURTH QUARTER 2021



STATISTICS BOTSWANA

Contact Statistician: Otsile Chelenyane
Industry Statistics Unit

Email: ochelenyane@statsbots.org.bw
Tel: (+267) 367 – 1300; Ext 200

Private Bag 0024, Gaborone.

Tel: 3671300 **Fax:** 3952201 **Toll Free:** 0800 600 200

E-mail: info@statsbots.org.bw

Website: <http://www.statsbots.org.bw>

Table of Contents

Preface	1
1.0 Summary of Findings of the Index of Electricity Generation (IEG).....	2
1.1 Electricity Generation.....	3
1.2 Imported Electricity.....	3
1.3 Distribution of Electricity.....	4
1.3.1 Contribution of Electricity Generation to Distribution.....	5
2.0 Technical Notes.....	12
2.1 Background.....	12
2.2 Concepts and formula of the Index of Electricity Generation, Importation and Distribution.....	12
2.3 Base Year.....	12

List of Tables

Table 1: Selected Key Indicators of Electricity Generation: 2013 First Quarter to 2021 Fourth Quarter.....	2
Table 2: Physical Volume of Electricity Generation (MWH): January 2011 – December 2021.....	6
Table 3: Indices of Physical Volume of Electricity Generation: January 2011 – December 2021.....	6
Table 4: Annual Percentage Changes in the Indices of the Physical Volume of Electricity Generation: January 2011 – December 2021.....	7
Table 5: Quarter-on-Quarter Percentage Changes: 2011 – December 2021.....	7
Table 6: Physical Volume of Imported Electricity (MWH): January 2011 – December 2021.....	8
Table 7: Annual Percentage Changes in the Physical Volume of Imported Electricity: January 2011 – December 2021.....	8
Table 8: Physical Volume of Imported Electricity By Source: Fourth Quarter 2021.....	9
Table 9: Physical Volume of Electricity Distributed (MWH): January 2011 – December 2021.....	9
Table 10: Annual Percentage Changes for the Physical Volume of Electricity Distribution: January 2011 – December 2021.....	10
Table 11: Generation of Electricity (MWH) as a Percentage of Distribution: 2011 –December 2021.....	11

List of Figures

Figure 1: Index of Electricity Generation (MWH) 2013 First Quarter to 2021 Fourth Quarter.....	3
Figure 2: Physical Volume of Imported Electricity (MWH): 2013 First Quarter to 2021 Fourth Quarter.....	4
Figure 3: Physical Volume of Distributed Electricity (MWH): 2013 First Quarter to 2021 Fourth Quarter.....	5

Preface

Statistics Botswana is mandated to compile data on industrial production in Botswana, hence electricity indices are only confined to electricity generated locally. However, importation and distribution volumes, and their percentage changes are included as well. This indicates Botswana's progress over time, towards generating adequate electricity to meet her demand. The data used in this brief is sourced from the Botswana Power Corporation.

This statistical brief is intended to apprise on Electricity Generation, Importation and Distribution by presenting Monthly, Quarterly and Yearly Volumes as well as Indices for Electricity Generation in Botswana. Also included are Year-on-Year and Quarter-on-Quarter Percentage Changes in Indices of Electricity Generation from 2011 to the fourth quarter of 2021. In subsequent sections of this report, emphasis will be on the Year-on-Year and Quarter-on-Quarter percentage changes in the physical volume of electricity generation, importation and distribution. This report uses 2013 as the base year.

The Index of Electricity Generation (IEG) stood at 111.7 during the fourth quarter of 2021, reflecting a year-on-year decrease of 9.3 percent compared to 123.1 recorded during the corresponding quarter in 2020. Similarly, the quarter-on-quarter comparison shows a decrease of 18.9 percent, from 137.7 during the third quarter of 2021 to 111.7 during the current quarter.

The release further shows changes in the volume of electricity generation in a given period against the base year (2013), and hence provides a reflection of the trend in the local electricity sector.

For more information, contact the Directorate of Stakeholder Relations at 3671300. All Statistics Botswana outputs/publications are available on the website at www.statsbots.org.bw and also at Statistics Botswana Information Resource Centre (Head-Office, Gaborone).

I sincerely thank all stakeholders involved in the formulation of this brief for their continued support, as we strive to better serve users of our products and services.



Dr. Lucky L. Mokgathe
For Statistician General
April 2022

1.0 Summary of Findings of the Index of Electricity Generation (IEG)

All figures in this report are not seasonally adjusted.

Key indicators of Electricity Generation from the first quarter of 2013 to the fourth quarter of 2021 are presented in **Table 1**.

The Index of Electricity Generation (IEG) stood at 111.7 during the fourth quarter of 2021, reflecting a decrease of 9.3 percent compared to 123.1 recorded during the same period in 2020. The quarter-on-quarter comparison shows a decrease of 18.9 percent, from the index of 137.7 during the third quarter of 2021.

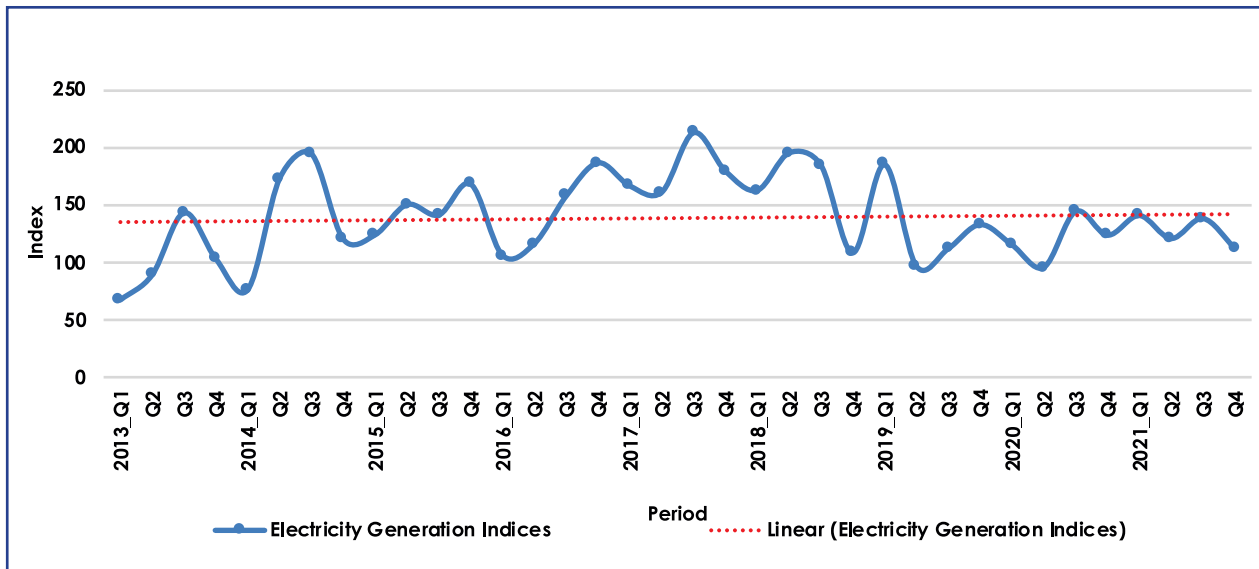
Table 1: Selected Key Indicators of Electricity Generation: 2013 First Quarter to 2021 Fourth Quarter

Period	Index of the Physical Volume of Electricity Generation	Year-on-Year Percentage Change	Quarter-on-Quarter Percentage Change
2013_Q1	66.5	151.4	0.0
Q2	88.5	202.8	32.9
Q3	142.7	216.7	61.3
Q4	102.3	53.8	(28.3)
2014_Q1	75.5	13.4	(26.2)
Q2	172.6	95.1	128.6
Q3	194.2	36.1	12.6
Q4	119.6	16.9	(38.4)
2015_Q1	123.4	63.5	3.2
Q2	149.9	(13.2)	21.4
Q3	140.8	(27.5)	(6.0)
Q4	167.8	40.2	19.1
2016_Q1	105.5	(14.5)	(37.1)
Q2	115.7	(22.8)	9.6
Q3	157.3	11.7	36.0
Q4	186.3	11.1	18.4
2017_Q1	166.1	57.4	(10.8)
Q2	160.6	38.8	(3.4)
Q3	212.6	35.2	32.4
Q4	179.1	(3.9)	(15.8)
2018_Q1	162.3	(2.3)	(9.4)
Q2	195.0	21.4	20.1
Q3	184.3	(13.3)	(5.5)
Q4	107.7	(39.8)	(41.5)
2019_Q1	184.8	13.8	71.5
Q2	96.0	(50.8)	(48.0)
Q3	111.3	(39.6)	16.0
Q4	132.4	22.9	18.9
2020_Q1	114.7	(37.9)	(13.4)
Q2	95.1	(0.9)	(17.0)
Q3	143.8	29.2	51.2
Q4	123.1	(7.0)	(14.4)
2021_Q1	140.3	22.4	14.0
Q2	120.2	26.4	(14.3)
Q3	137.7	(4.2)	14.6
Q4	111.7	(9.3)	(18.9)

Note: 1. () Indicates negative figures

Figure 1 presents the trend of the Index of Electricity Generation from the first quarter of 2013 to the fourth quarter of 2021. There has been an improvement in the local electricity generation as evidenced by the upward trend, albeit with fluctuations between the years.

Figure 1: Index of Electricity Generation (MWH): 2013 First Quarter to 2021 Fourth Quarter



1.1 Electricity Generation

This Sub-Section discusses the physical volume of electricity generated locally as presented in **Table 2**. The table forms the basis for the computation of indices of electricity generation in **Table 3**. The Year-on-Year and Quarter-on-Quarter percentage changes in the volume of electricity generated are presented in **Table 4** and **Table 5**, covering the period 2011 to fourth quarter 2021.

The physical volume of electricity generated decreased by 9.3 percent (48,278 MWH), from 517,627 MWH during the fourth quarter of 2020 to 469,349 MWH during the current quarter.

The quarter-on-quarter perspective shows that local electricity generation decreased by 18.9 percent (109,686 MWH), from 579,036 MWH during the third quarter of 2021 to 469,349 MWH during the period under review. This decrease was largely due to operational challenges at Morupule B power plant.

1.2 Imported Electricity

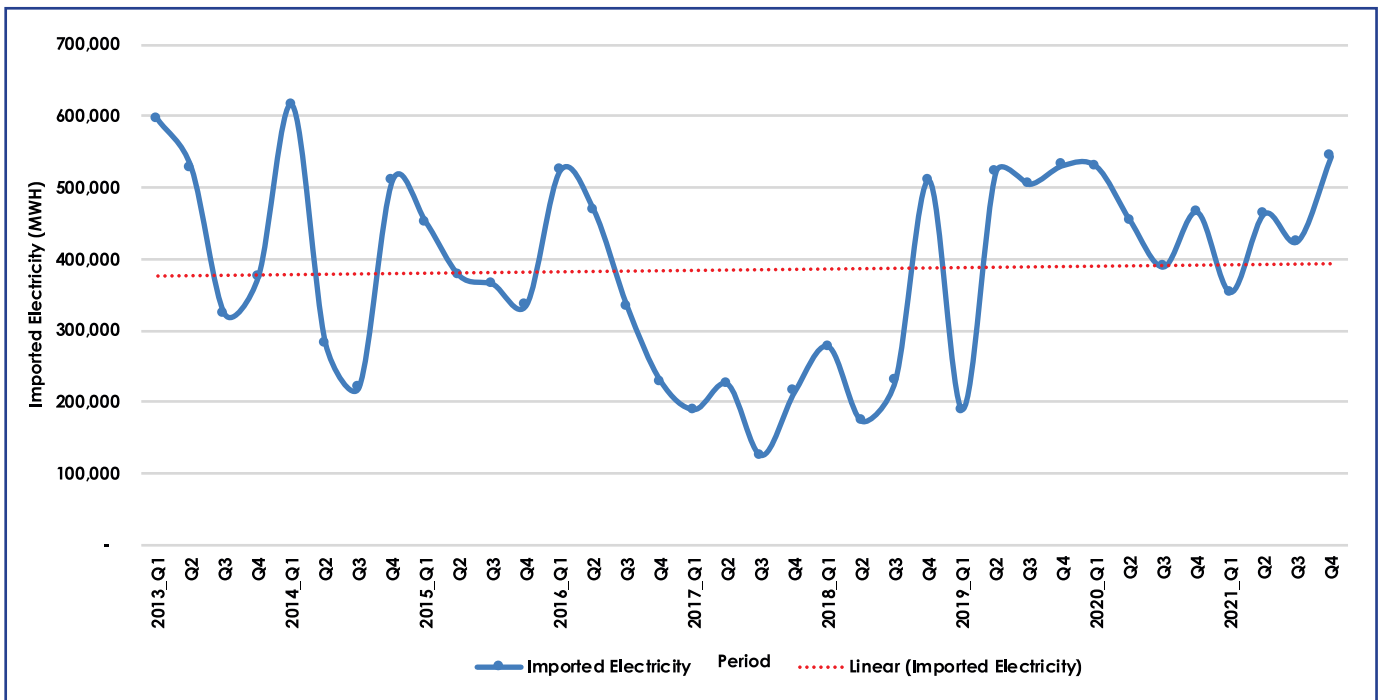
The discussions in this section are based on **Table 6**, and **Table 7** as well as **Figure 2**.

During the fourth quarter of 2021, the physical volume of imported electricity increased by 16.7 percent (77,716 MWH), from 465,701 MWH during the fourth quarter of 2020 to 543,417 MWH during the quarter under review.

Compared to the previous quarter, electricity imported during the fourth quarter of 2021 increased by 28.0 percent (118,714 MWH), from 424,703 MWH during the third quarter of 2021 to 543,417 MWH.

Figure 2 shows the trend in the physical volume of imported electricity from the first quarter of 2013 to the fourth quarter of 2021. The upward trend indicates that local generation of electricity is not adequate to meet domestic demand, hence the continued need to augment with imported electricity.

Figure 2: Physical Volume of Imported Electricity (MWH): 2013 First Quarter to 2021 Fourth Quarter



Botswana imported 53.7 percent of total electricity distributed during the fourth quarter of 2021 (Table 11). Eskom was the main source of imported electricity at 40.6 percent of total electricity imports. The Zambia Electricity Supply Corporation Limited (ZESCO) accounted for 22.0 percent, while the remaining 17.0, 15.0, 4.0 and 1.4 percent were sourced from Electricidade De Mozambique (EDM), Southern African Power Pool (SAPP), Cross-border electricity markets and Nampower, respectively (Table 8). Cross-border electricity markets is an Statistics Botswana arrangement whereby towns and villages along the border are supplied with electricity directly from neighbouring countries such as Namibia and Zambia.

1.3 Distribution of Electricity

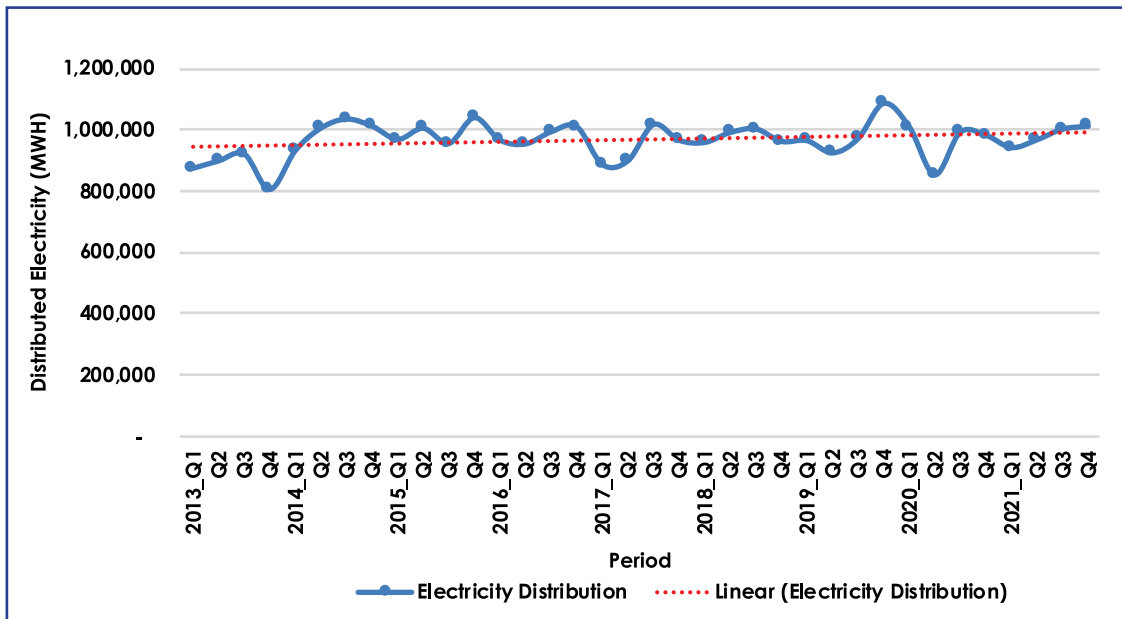
This section combine locally produced electricity and imported electricity to come up with electricity that is available for distribution in Botswana. This does not take into account electricity used for auxiliary services, pumping, network losses as well as production of electricity through incineration of waste. The computation of electricity distribution is guided by the International Recommendations for Industrial Statistics (IRIS) 2008. Tables 9, 10 and 11 form the basis for discussion under this subsection.

Table 9 shows the physical volume of electricity distributed from 2011 to the fourth quarter of 2021, while Table 10 presents the annual percentage changes in the volume of electricity distributed from 2011 to the fourth quarter of 2021. These tables can also be used as guidance with regard to whether electricity distributed is improving over time, thereby indicating that there are ongoing efforts to meet the domestic demand.

The year-on-year perspective shows that the amount of distributed electricity increased by 3.0 percent (29,438 MWH), from 983,328 MWH during the fourth quarter of 2020 to 1,012,766 MWH during the current quarter. The quarter-on-quarter comparison of distributed electricity shows an increase of 0.9 percent (9,028 MWH), from 1,003,738 MWH during the third quarter of 2021 to 1,012,766 MWH during the review quarter.

Figure 3 shows that there has been a gradual increase of distributed electricity from the first quarter of 2013 to the fourth quarter of 2021, even though there are fluctuations.

Figure 3: Physical Volume of Distributed Electricity (MWH): 2013 First Quarter to 2021 Fourth Quarter



1.3.1 Contribution of Electricity Generation to Distribution

The electricity generation given as a percentage of electricity distributed is of paramount importance in assessing whether the local generation is improving overtime to reduce reliance on imported electricity. This information is displayed in **Table 11**.

It can be observed from **Table 11** that electricity generated locally contributed 46.3 percent to electricity distributed during the fourth quarter of 2021, compared to a contribution of 52.6 percent during the same quarter in 2020, a decrease of 6.3 percentage points.

The quarter-on-quarter comparison shows that the contribution of electricity generated to electricity distributed decreased by 11.4 percentage points compared to the 57.7 percent

Table 2: Physical Volume of Electricity Generation (MWH): January 2011 – December 2021

Period	2011	2012	2013	2014	2015	2016	2017	2018	2019	2020	2021
January	39,195	26,574	110,960	137,802	158,907	206,381	245,598	209,333	272,140	148,376	199,148
February	32,847	16,938	80,410	77,067	180,520	127,975	216,264	227,955	235,908	187,925	186,121
March	20,079	67,761	88,358	102,377	179,400	109,272	236,589	245,092	268,605	145,683	204,630
April	29,593	34,069	94,011	151,675	195,568	112,765	195,703	210,965	163,206	102,898	118,600
May	15,762	39,826	140,454	252,235	206,905	179,837	205,705	310,500	125,266	98,692	185,311
June	23,045	48,928	137,414	321,453	227,503	193,586	273,639	298,291	115,104	198,314	201,403
July	27,814	81,013	158,120	318,627	240,314	213,841	311,655	293,739	125,091	217,448	186,631
August	24,536	11,205	223,420	296,036	177,052	219,402	315,552	289,885	152,822	199,437	196,681
September	21,063	97,177	218,222	201,802	174,617	228,002	266,623	191,199	190,061	187,763	195,723
October	27,166	77,236	32,183	71,243	301,913	299,945	234,090	73,018	195,637	158,411	189,669
November	23,044	113,384	203,228	244,723	213,798	213,303	296,547	121,910	208,940	176,030	129,005
December	19,231	89,101	194,717	186,915	189,490	269,893	222,240	258,009	151,998	183,186	150,676
Q1	92,120	111,274	279,728	317,245	518,828	443,628	698,451	682,380	776,653	481,984	589,899
Q2	68,400	122,823	371,879	725,363	629,976	486,188	675,047	819,755	403,576	399,903	505,313
Q3	73,413	189,395	599,762	816,465	591,983	661,245	893,831	774,822	467,974	604,647	579,036
Q4	69,441	279,721	430,128	502,881	705,201	783,141	752,877	452,938	556,576	517,627	469,349
TOTAL	303,374	703,213	1,681,497	2,361,954	2,445,988	2,374,202	3,020,206	2,729,895	2,204,779	2,004,162	2,143,597

Table 3: Indices of Physical Volume of Electricity Generation: January 2011 – December 2021

Period	2011	2012	2013	2014	2015	2016	2017	2018	2019	2020	2021
Jan	28.0	19.0	79.2	98.3	113.4	147.3	175.3	149.4	194.2	105.9	142.1
Feb	23.4	12.1	57.4	55.0	128.8	91.3	154.3	162.7	168.4	134.1	132.8
March	14.3	48.4	63.1	73.1	128.0	78.0	168.8	174.9	191.7	104.0	146.0
April	21.1	24.3	67.1	108.2	139.6	80.5	139.7	150.6	116.5	73.4	84.6
May	11.2	28.4	100.2	180.0	147.7	128.3	146.8	221.6	89.4	70.4	132.2
June	16.4	34.9	98.1	229.4	162.4	138.2	195.3	212.9	82.1	141.5	143.7
July	19.8	57.8	112.8	227.4	171.5	152.6	222.4	209.6	89.3	155.2	133.2
August	17.5	8.0	159.4	211.3	126.4	156.6	225.2	206.9	109.1	142.3	140.4
September	15.0	69.4	155.7	144.0	124.6	162.7	190.3	136.4	135.6	134.0	139.7
October	19.4	55.1	23.0	50.8	215.5	214.1	167.1	52.1	139.6	113.1	135.4
November	16.4	80.9	145.0	174.6	152.6	152.2	211.6	87.0	149.1	125.6	92.1
December	13.7	63.6	139.0	133.4	135.2	192.6	158.6	184.1	108.5	130.7	107.5
Q1	21.9	26.5	66.5	75.5	123.4	105.5	166.1	162.3	184.8	114.7	140.3
Q2	16.3	29.2	88.5	172.6	149.9	115.7	160.6	195.0	96.0	95.1	120.2
Q3	17.5	45.1	142.7	194.2	140.8	157.3	212.6	184.3	111.3	143.8	137.7
Q4	16.5	66.5	102.3	119.6	167.8	186.3	179.1	107.7	132.4	123.1	111.7
TOTAL	18.0	41.8	100.0	140.5	145.5	141.2	179.6	162.3	131.1	119.2	127.5

Table 4: Annual Percentage Changes in the Indices of the Physical Volume of Electricity Generation: January 2011 – December 2021

Period	2011	2012	2013	2014	2015	2016	2017	2018	2019	2020	2021
Jan	(11.8)	(32.2)	317.5	24.2	15.3	29.9	19.0	(14.8)	30.0	(45.5)	34.2
Feb	(15.0)	(48.4)	374.7	(4.2)	134.2	(29.1)	69.0	5.4	3.5	(20.3)	(1.0)
March	(63.8)	237.5	30.4	15.9	75.2	(39.1)	116.5	3.6	9.6	(45.8)	40.5
April	(27.6)	15.1	175.9	61.3	28.9	(42.3)	73.5	7.8	(22.6)	(37.0)	15.3
May	(62.4)	152.7	252.7	79.6	(18.0)	(13.1)	14.4	50.9	(59.7)	(21.2)	87.8
June	(24.9)	112.3	180.9	133.9	(29.2)	(14.9)	41.4	9.0	(61.4)	72.3	1.6
July	(16.1)	191.3	95.2	101.5	(24.6)	(11.0)	45.7	(5.7)	(57.4)	73.8	(14.2)
August	(38.0)	(54.3)	1,893.9	32.5	(40.2)	23.9	43.8	(8.1)	(47.3)	30.5	(1.4)
September	(40.1)	361.4	124.6	(7.5)	(13.5)	30.6	16.9	(28.3)	(0.6)	(1.2)	4.2
October	(28.0)	184.3	(58.3)	121.4	323.8	(0.7)	(22.0)	(68.8)	167.9	(19.0)	19.7
November	10.3	392.0	79.2	20.4	(12.6)	(0.2)	39.0	(58.9)	71.4	(15.8)	(26.7)
December	(50.0)	363.3	118.5	(4.0)	1.4	42.4	(17.7)	16.1	(41.1)	20.5	(17.7)
Q1	(33.5)	20.8	151.4	13.4	63.5	(14.5)	57.4	(2.3)	13.8	(37.9)	22.4
Q2	(39.7)	79.6	202.8	95.1	(13.2)	(22.8)	38.8	21.4	(50.8)	(0.9)	26.4
Q3	(32.0)	158.0	216.7	36.1	(27.5)	11.7	35.2	(13.3)	(39.6)	29.2	(4.2)
Q4	(28.5)	302.8	53.8	16.9	40.2	11.1	(3.9)	(39.8)	22.9	(7.0)	(9.3)
TOTAL	(33.6)	131.8	139.1	40.5	3.6	(2.9)	27.2	(9.6)	(19.2)	(9.1)	7.0

Note:

1. () Denotes negative numbers

Table 5: Quarter-on-Quarter Percentage Changes: 2011 – December 2021

Period	2011	2012	2013	2014	2015	2016	2017	2018	2019	2020	2021
Q1	(5.1)	60.2	0.0	(26.2)	3.2	(37.1)	(10.8)	(9.4)	71.5	(13.4)	14.0
Q2	(25.7)	10.4	32.9	128.6	21.4	9.6	(3.4)	20.1	(48.0)	(17.0)	(14.3)
Q3	7.3	54.2	61.3	12.6	(6.0)	36.0	32.4	(5.5)	16.0	51.2	14.6
Q4	(5.4)	47.7	(28.3)	(38.4)	19.1	18.4	(15.8)	(41.5)	18.9	(14.4)	(18.9)

Note:

1. () Denotes negative numbers

Table 6: Physical Volume of Imported Electricity (MWH): January 2011 – December 2021

Period	2011	2012	2013	2014	2015	2016	2017	2018	2019	2020	2021
Jan	243,795	272,338	193,786	192,251	184,564	140,172	57,679	124,148	54,922	196,457	126,434
Feb	229,027	274,079	185,022	216,031	113,430	166,303	56,951	77,257	66,228	138,489	102,376
March	269,723	249,777	216,621	207,923	153,098	217,261	74,422	75,865	67,915	194,406	124,438
April	256,694	253,390	206,965	162,767	129,605	196,075	88,783	94,226	139,549	156,520	191,548
May	277,975	271,135	169,159	85,246	129,487	138,677	92,379	39,052	188,760	174,404	140,355
June	279,130	275,063	151,442	33,474	117,155	134,100	43,156	39,179	193,713	122,808	131,268
July	275,387	245,151	161,866	39,365	99,695	110,932	34,746	55,772	196,021	123,768	141,798
August	268,187	296,226	82,084	48,497	132,541	119,340	35,332	45,131	187,294	132,273	148,437
September	256,871	200,082	78,365	132,060	132,191	103,083	54,534	128,524	120,800	132,864	134,468
October	264,952	240,631	123,785	266,785	59,516	57,653	83,734	249,015	174,433	172,022	141,936
November	274,539	209,811	123,785	96,415	115,763	116,517	36,094	200,025	159,650	146,901	216,497
December	272,789	212,114	128,060	147,112	160,652	54,373	94,307	61,258	196,953	146,777	184,984
Q1	742,544	796,194	595,429	616,206	451,092	523,736	189,052	277,270	189,065	529,352	353,248
Q2	813,799	799,587	527,566	281,487	376,248	468,852	224,318	172,457	522,021	453,733	463,171
Q3	800,444	741,459	322,315	219,922	364,427	333,355	124,612	229,427	504,115	388,905	424,703
Q4	812,281	662,556	375,630	510,311	335,931	228,543	214,135	510,298	531,036	465,701	543,417
TOTAL	3,169,068	2,999,797	1,820,940	1,627,926	1,527,697	1,554,486	752,117	1,189,452	1,746,238	1,837,690	1,784,538

Table 7: Annual Percentage Changes in the Physical Volume of Imported Electricity: January 2011 – December 2021

Period	2011	2012	2013	2014	2015	2016	2017	2018	2019	2020	2021
Jan	3.3	11.7	(28.8)	(0.8)	(4.0)	(24.1)	(58.9)	115.2	(55.8)	257.7	(35.6)
Feb	4.2	19.7	(32.5)	16.8	(47.5)	46.6	(65.8)	35.7	(14.3)	109.1	(26.1)
March	7.6	(7.4)	(13.3)	(4.0)	(26.4)	41.9	(65.7)	1.9	(10.5)	186.2	(36.0)
April	9.5	(1.3)	(18.3)	(21.4)	(20.4)	51.3	(54.7)	6.1	48.1	12.2	22.4
May	(1.0)	(2.5)	(37.6)	(49.6)	51.9	7.1	(33.4)	(57.7)	383.4	(7.6)	(19.5)
June	1.4	(1.5)	(44.9)	(77.9)	250.0	14.5	(67.8)	(9.2)	394.4	(36.6)	6.9
July	(0.3)	(11.0)	(34.0)	(75.7)	153.3	11.3	(68.7)	60.5	251.5	(36.9)	14.6
August	3.5	10.5	(72.3)	(40.9)	173.3	(10.0)	(70.4)	27.7	315.0	(29.4)	12.2
September	3.3	(22.1)	(60.8)	68.5	0.1	(22.0)	(47.1)	135.7	(6.0)	10.0	1.2
October	(0.8)	(9.2)	(48.6)	115.5	(77.7)	(3.1)	45.2	197.4	(30.0)	(1.4)	(17.5)
November	1.1	(23.6)	(41.0)	(22.1)	20.1	0.7	(69.0)	454.2	(20.2)	(8.0)	47.4
December	1.8	(22.2)	(39.6)	14.9	9.2	(66.2)	73.4	(35.0)	221.5	(25.5)	26.0
Q1	5.1	7.2	(25.2)	3.5	(26.8)	16.1	(63.9)	46.7	(31.8)	180.0	(33.3)
Q2	2.9	(1.7)	(34.0)	(46.6)	33.7	24.6	(52.2)	(23.1)	202.7	(13.1)	2.1
Q3	2.1	(7.4)	(56.5)	(31.8)	65.7	(8.5)	(62.6)	84.1	119.7	(22.9)	9.2
Q4	0.7	(18.4)	(43.3)	35.9	(34.2)	(32.0)	(6.3)	138.3	4.1	(12.3)	16.7
TOTAL	2.6	(5.3)	(39.3)	(10.6)	(6.2)	1.8	(51.6)	58.1	46.8	5.2	(2.9)

Note:

1. () Denotes negative numbers

Table 8: Imported Electricity by Source in MWH: Fourth Quarter 2021

Source	MWH	%
Eskom	220,372	40.6
Nampower	7,616	1.4
Cross Boarder	21,847	4.0
SAPP	81,433	15.0
EDM	92,500	17.0
ZESCO	119,600	22.0
Total	543,418	100.0

Table 9: Physical Volume of Electricity Distribution (MWH): January 2011 – December 2021

Period	2011	2012	2013	2014	2015	2016	2017	2018	2019	2020	2021
January	282,990	298,912	304,746	330,053	343,471	346,553	303,277	333,481	327,062	344,833	325,582
February	261,873	291,017	265,432	293,098	293,950	294,278	273,215	305,212	302,136	326,413	288,497
March	289,801	317,538	304,979	310,300	332,498	326,533	311,011	320,957	336,520	340,090	329,067
April	286,287	287,459	300,976	314,442	325,173	308,840	284,486	305,191	302,755	259,418	310,147
May	293,737	310,961	309,613	337,481	336,392	318,514	298,084	349,552	314,026	273,096	325,666
June	302,176	323,990	288,856	354,927	344,658	327,686	316,795	337,470	308,817	321,122	332,671
July	303,201	326,165	319,986	357,992	340,009	324,773	346,401	349,511	321,112	341,216	328,429
August	292,723	307,431	305,504	344,533	309,593	338,742	350,884	335,016	340,116	331,710	345,119
September	277,934	297,258	296,587	333,861	306,808	331,085	321,157	319,722	310,861	320,627	330,191
October	292,118	317,867	155,968	338,027	361,429	357,598	317,824	322,033	370,071	330,434	331,605
November	297,584	323,195	327,013	341,138	329,561	329,820	332,641	321,935	368,591	322,931	345,502
December	292,020	301,215	322,777	334,027	350,142	324,266	316,547	319,267	348,951	329,963	335,659
Q1	834,665	907,468	875,157	933,451	969,920	967,364	887,503	959,650	965,718	1,011,335	943,147
Q2	882,199	922,411	899,445	1,006,850	1,006,224	955,040	899,365	992,212	925,597	853,636	968,484
Q3	873,857	930,854	922,077	1,036,387	956,410	994,600	1,018,442	1,004,249	927,090	993,552	1,003,738
Q4	881,721	942,277	805,758	1,013,192	1,041,132	1,011,684	967,012	963,235	1,087,612	983,328	1,012,766
Year	3,472,442	3,703,010	3,502,437	3,989,880	3,973,685	3,928,688	3,772,322	3,919,347	3,951,017	3,841,852	3,928,135

Table 10: Annual Percentage Changes for the Physical Volume of Electricity Distribution: January 2011 – December 2021

Period	2011	2012	2013	2014	2015	2016	2017	2018	2019	2020	2021
January	0.9	5.6	2.0	8.3	4.1	0.9	(12.5)	10.0	(1.9)	5.4	(5.6)
February	1.3	11.1	(8.8)	10.4	0.3	0.11	(7.2)	11.7	(1.0)	8.0	(11.6)
March	(5.3)	9.6	(4.0)	1.7	7.2	(1.8)	(4.8)	3.2	4.8	1.1	(3.2)
April	4.0	0.4	4.7	4.5	3.4	(5.0)	(7.9)	7.3	(0.8)	(14.3)	19.6
May	(9.0)	5.9	(0.4)	9.0	(0.3)	(5.3)	(6.4)	17.3	(10.2)	(13.0)	19.2
June	(1.3)	7.2	(10.8)	22.9	(2.9)	(4.9)	(3.3)	6.5	(8.5)	10.1	3.6
July	(2.0)	7.6	(1.9)	11.9	(5.0)	(4.5)	6.7	0.9	(8.1)	6.3	(3.7)
August	(2.0)	5.0	(0.6)	12.8	(10.1)	9.4	3.6	(4.5)	1.5	(2.5)	4.0
September	(2.1)	7.0	(0.2)	12.6	(8.1)	7.9	(3.0)	(0.4)	(2.8)	3.1	3.0
October	(4.1)	8.8	(50.9)	116.7	6.9	(1.1)	(11.1)	1.3	14.9	(10.7)	0.4
November	1.7	8.6	1.2	4.3	(3.4)	0.1	0.9	(3.2)	14.5	(12.4)	7.0
December	(4.7)	3.1	7.2	3.5	4.8	(7.4)	(2.4)	0.9	9.3	(5.4)	1.7
Q1	(1.2)	8.7	(3.6)	6.7	3.9	(0.3)	(8.3)	8.1	0.6	4.7	(6.7)
Q2	(2.4)	4.6	(2.5)	11.9	(0.1)	(5.1)	(5.8)	10.3	(6.7)	(7.8)	13.5
Q3	(2.0)	6.5	(0.9)	12.4	(7.7)	4.0	2.4	(1.4)	(3.2)	2.2	1.0
Q4	(2.4)	6.9	(14.5)	25.7	2.8	(2.8)	(4.4)	(0.4)	12.9	(9.6)	3.0
Year	(2.0)	6.6	(5.4)	13.9	(0.4)	(1.1)	(4.0)	3.9	0.8	(2.8)	2.2

Note:

1. () Denotes negative numbers

Table 11: Generation of Electricity (MWH) as a Percentage of Distribution 2011 – December 2021

Year\ Utility	Electricity Generation	Imported Electricity	Electricity Distribution	% Contribution of Generated Electricity to Distributed
2011	303,374	3,169,068	3,472,442	8.7
2012	703,213	2,999,797	3,703,010	19.0
2013	1,681,497	1,820,940	3,502,437	48.0
2014	2,361,954	1,627,925	3,989,879	59.2
2015	2,445,988	1,527,697	3,973,685	61.6
2016	2,374,202	1,554,486	3,928,688	60.4
2017	3,020,206	752,117	3,772,322	80.1
2018	2,729,895	1,189,452	3,919,347	69.7
2019	2,204,779	1,746,238	3,951,017	55.8
2020	2,004,162	1,837,690	3,841,852	52.2
2021	2,143,597	1,784,538	3,928,135	54.6
2013_Q1	279,728	595,429	875,157	32.0
Q2	371,879	527,566	899,445	41.3
Q3	599,762	322,315	922,077	65.0
Q4	430,128	375,630	805,758	53.4
2014_Q1	317,245	616,206	933,451	34.0
Q2	725,363	281,487	1,006,850	72.0
Q3	816,465	219,922	1,036,387	78.8
Q4	502,881	510,311	1,013,192	49.6
2015_Q1	518,828	451,092	969,920	53.5
Q2	629,976	376,248	1,006,224	62.6
Q3	591,983	364,427	956,410	61.9
Q4	705,201	335,931	1,041,132	67.7
2016_Q1	443,628	523,736	967,364	45.9
Q2	486,188	468,852	955,040	50.9
Q3	661,245	333,355	994,600	66.5
Q4	783,141	228,543	1,011,684	77.4
2017_Q1	698,451	189,052	887,503	78.7
Q2	675,047	224,318	899,365	75.1
Q3	893,831	124,612	1,018,442	87.8
Q4	752,877	214,135	967,012	77.9
2018_Q1	682,380	277,270	959,650	71.1
Q2	819,755	172,457	992,212	82.6
Q3	774,882	229,427	1,004,249	77.2
Q4	452,938	510,298	963,235	47.0
2019_Q1	776,653	189,065	965,718	80.4
Q2	403,576	522,021	925,597	43.6
Q3	467,974	504,115	972,090	48.1
Q4	556,576	531,036	1,087,612	51.2
2020_Q1	481,984	529,352	1,011,335	47.7
Q2	399,903	453,733	853,636	46.8
Q3	604,647	388,905	993,552	60.9
Q4	517,627	465,701	983,328	52.6
2021_Q1	589,899	353,248	943,147	62.5
Q2	505,313	463,171	968,484	52.2
Q3	579,036	424,703	1,003,738	57.7
Q4	469,349	543,417	1,012,766	46.3

2.0 Technical Notes

2.1 Background

The generation of electricity in Botswana started in 1985 with a coal fired thermal power station at Morupule operating at a capacity of 132 MWH. Prior to this period, most of Botswana's electricity was imported from South Africa's power utility, Eskom. In 2008 South Africa's electricity demand started to exceed its supply, resulting in the South African government restricting power exports. As a result, Botswana and the entire Southern African region experienced massive power shortages because of the reduced electricity exports from South Africa (http://en.wikipedia.org/wiki/Energy_in_Botswana).

To avert the situation, Botswana Government opted for alternative ways of sourcing electricity for the country; hence the plan to increase local generation of electricity at Morupule Power Station. The Morupule Power A plant of capacity 132 MWH was augmented with Morupule Power B which is to have a capacity of 600 MWH upon completion (BPC Annual Report, 2010).

2.2 Concepts and formula of the Index of Electricity Generation, Importation and Distribution

The Index of Electricity Generation is a Laspeyres index. The weighted average for electricity generation equals one because there are no various electricity products. The index is thus calculated using the formula;

$$I = \frac{\sum R_i \cdot W_i}{\sum W_i}$$

Where;

I is the index

R is the electricity generation relative

W is the weight

The electricity generation relative for the quarter has been calculated by using the formula:

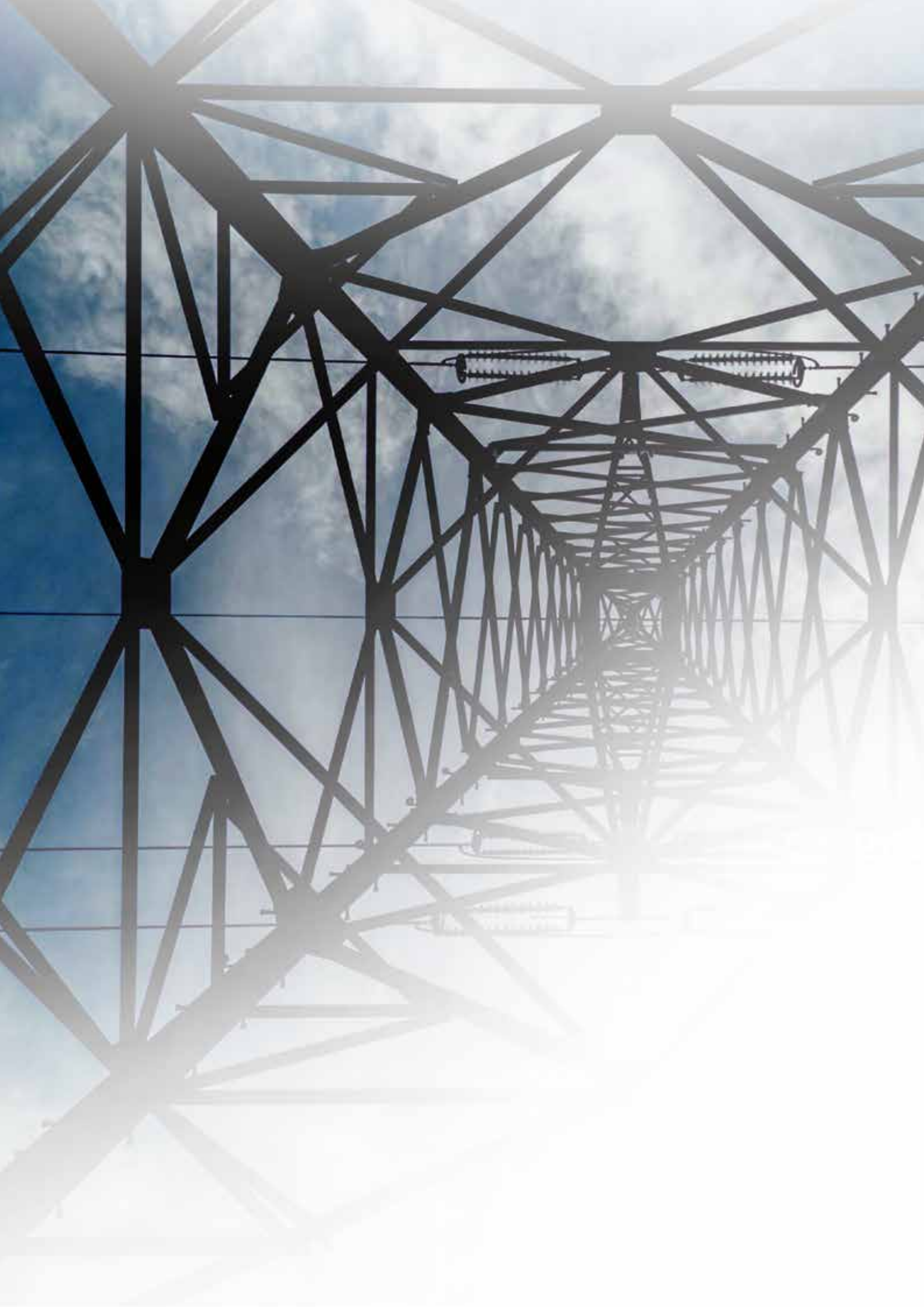
$$R_i = \frac{P_{ic}}{P_{i0}} * 100$$

Where P_{ic} is the electricity generation of the current quarter and P_{i0} is the generation of electricity of the base year.

The calculation of the monthly generation indices is based on the volume of electricity units produced.

2.3 Base Year

The base year, also referred to as **reference period** used in this brief is 2013, which is set at 100. The selection of the reference period was informed by the availability of relevant data and synchronization of data with other sectors within the industry.





Private Bag 0024, Gaborone

Tel: 3671300 **Fax:** 3952201

Toll Free: 0800 600 200

Private Bag F193, City of Francistown

Tel. 241 5848, **Fax.** 241 7540

Private Bag 47, Maun

Tel: 371 5716 **Fax:** 686 4327

Private Bag 32 ,Ghanzi

Tel: 371 5723 **Fax:** 659 7506

E-mail: info@statsbots.org.bw

Website: <http://www.statsbots.org.bw>



STATISTICS BOTSWANA