

Statistics Botswana
Private Bag 0024, Gaborone, Botswana
Tel: (267) 3671300, Fax (267) 3952201,
Email: csobots@gov.bw, Website: www.cso.gov.bw

All correspondence should be addressed to Statistician General

CONSUMER PRICE INDEX - MARCH 2013

Copyright 2013 © Statistics Botswana

CONTENTS

COMMENTARY

Section 1: Headline Inflation

Section 2: Core Inflation

CHARTS

1. National Rates of Inflation, January 2010 – March 2013
2. Monthly Changes in the Cost-of-Living Index, January 2010 – March 2013
3. Non-Tradable Inflation Rates, January 2010 – March 2013
4. Tradable Inflation Rates, January 2010 - March 2013

TABLES

1. Cost-of-Living Index Series (January 2010 – March 2013)
2. National Cost-of-Living Group and Section Indices
3. Cost-of-Living Index by Tradability (January 2010 – March 2013)
4. Core Inflation Rates
5. Annual average inflation rates 2008-2013

GLOSSARY

[Contact Statistician: Phaladi Labobedi Tel: 3934968 Ext: 365/378](#)

COMMENTARY

Section 1: Headline Inflation

The March 2013, national annualized inflation rate stood at 7.6 percent, an increase of 0.1 of a percentage point on the February 2013 rate which was at 7.5 percent. The urban villages' inflation rate went up by 0.3 of a percentage point, from 6.9 percent in February, to 7.2 percent in March. The cities & towns and rural villages' inflation rates remained unchanged at 7.5 and 8.3 percent respectively, from February leading to March 2013.

The March 2013 national Consumer Price Index was at 167.1, having increased by 0.6 percent on the February 2013 index of 166.2. The urban villages' index went up from 165.0 to 166.2, netting an increase of 0.7 percent. The rural villages' index rose by 0.6 percent, from 170.7 to 171.8 between the two months, while the cities & towns' index moved from 165.2 to 166.0 between February and March, recording an increase of 0.4 percent.

Group indices were mostly stable between February and March 2013, recording movements less than 1.0 percent, except only Alcoholic Beverages, Tobacco & Narcotics group index which recorded 2.3 percent.

The Alcoholic Beverages, Tobacco & Narcotics group index rose by 2.3 percent, from 217.2 to 222.1 between the two months. This was due to increases in the constituent section indices of *Alcoholic Beverages (2.5 percent)*, and *Tobacco (1.1 percent)*.

The *Food & Non-Alcoholic Beverages* index group advanced from 186.0 to 187.1, with an increase of 0.6 percent between February and March. The increase was attributed to the general increase in food prices especially *Mineral Waters, Soft Drinks, Fruits & Vegetable Juices (1.5 percent)*, *Sugar, Jam, Honey, Chocolate & Confectionery (1.3 percent)*, *Coffee, Tea & Cocoa (1.1 percent)* *Milk, Cheese & Milk Products (0.9 percent)* and *Oil & Fats (0.8 percent)*.

The Furnishing, Household Equipment & Routine Maintenance Group index recorded an increase of 0.5 percent, from 164.5 in February to 165.2 in March. All section indices recorded increases, notably, *Glassware, Tableware & Household Utensils (0.7 percent)* and *Goods & Services for Household Maintenance (0.7 percent)*.

All-Tradable inflation rate registered an increase of 0.2 of a percentage point from 8.2 percent in February, to 8.4 percent in March. The *Domestic Tradable* inflation also rose by 0.2 of a percentage point in March, registering 9.4 percent against the February figure of 9.2 percent, while the *Imported Tradable* inflation rate went up by 0.1 of a percentage point, from 7.6 percent in February, to 7.7 percent in March. The March *Non-Tradable* inflation rate remained unchanged at 5.3 percent, same as in February.

The *All-Tradable* index rose from 173.8 in February to 175.0 in March, increasing by 0.7 percent. The *Domestic Tradable* index went up by 1.3 percent, from 186.0 in February to 188.4 in March. The *Imported Tradable* index rose by 0.3 percent, from 167.5 in February to 168.1 in March, whereas the *Non-Tradable* index registered an increase of 0.2 percent, from 148.4 in February to 148.8 in March.

Section 2: Core Inflation

The Trimmed Mean Core Inflation rate stood at 7.3 percent in March, notching-up by 0.1 of a percentage point on the February 2013 rate of 7.2 percent. The Core Inflation rate by exclusion also registered an increase of 0.1 of a percentage point from 6.9 percent in February to 7.0 percent in March.

Chart 1: National Inflation Rate 2010 - 2013

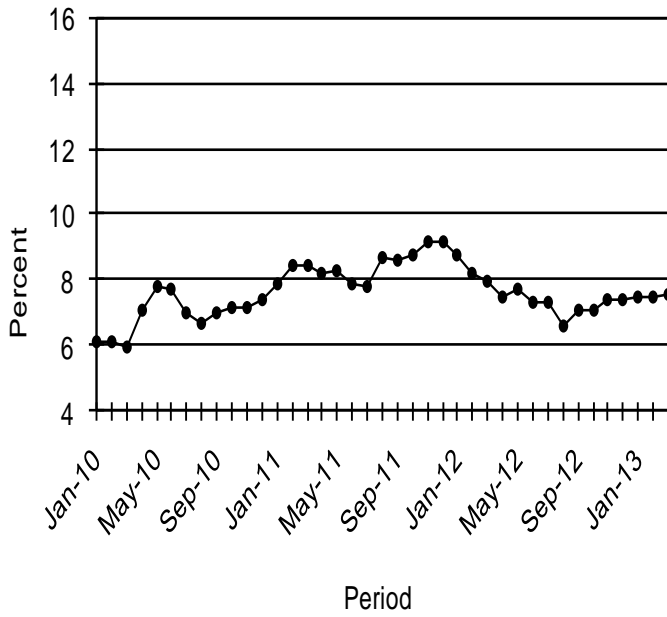


Chart 2: Monthly Changes in Cost-of-Living Index 2010 - 2013

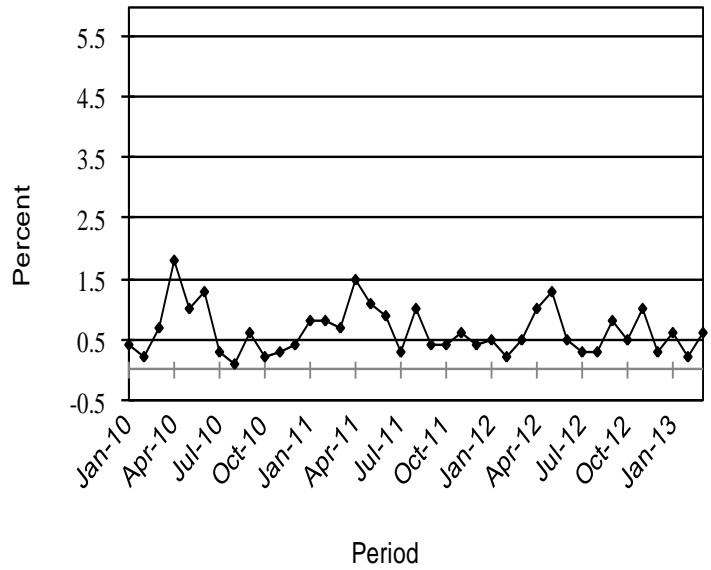


Chart 3: Non-Tradable Inflation 2010 - 2013

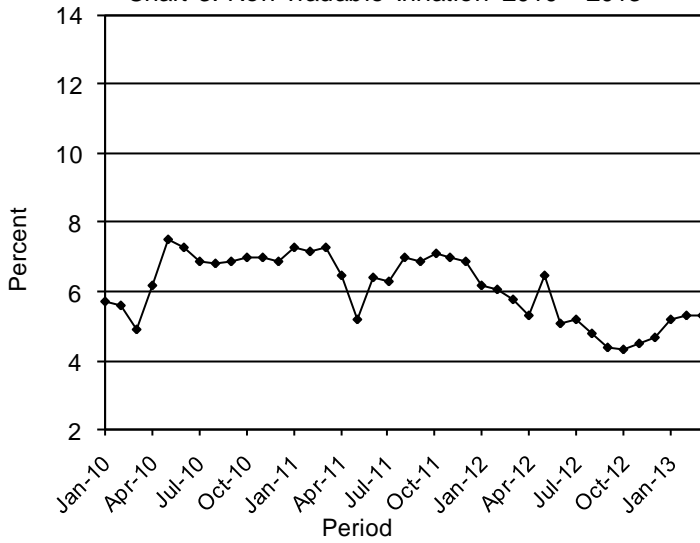
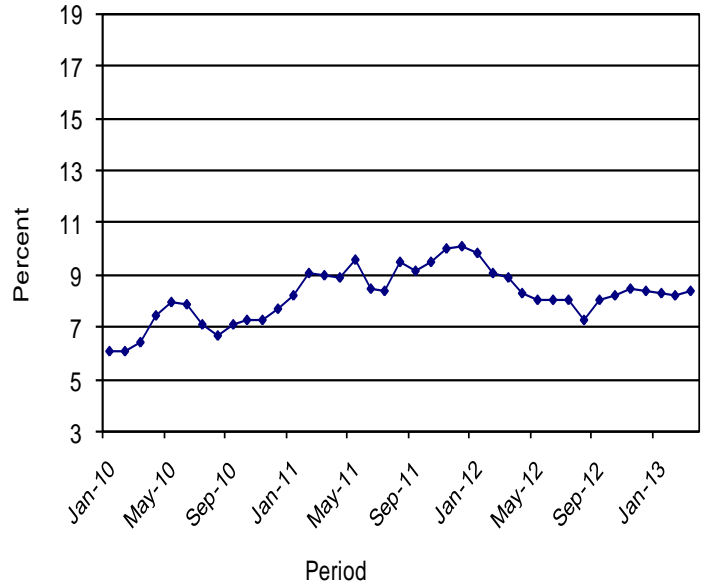


Chart 4: Tradable Inflation 2010 - 2013



A.N. Majelantle

A.N. Majelantle
 Statistician General
 15th April 2013

TABLE 1: COST OF LIVING INDEX (September 2006 =100.0)

		Food	Alcohol and Tobacco	Clothing and Footwear	Housing	Furni- ture etc	Health	Trans- port	Communi- cation	Rec. & Culture	Educatio n	Rest. & Hotels	Miscella neous
Weights		21.84	9.29	7.52	11.46	6.76	2.71	18.98	3.01	2.22	3.37	3.27	9.57
(1)	(2)	(3)	(4)	(5)	(6)	(7)	(8)	(9)	(10)	(11)	(12)	(13)	(14)
2010	Jan	151.1	165.8	116.9	119.9	130.6	124.9	120.6	94.6	109.9	120.4	155.6	114.4
	Feb	151.1	166.0	117.3	120.0	131.2	125.2	121.0	94.6	110.3	120.4	156.5	114.6
	Mar	152.4	167.6	118.9	121.2	133.1	125.4	121.2	94.6	110.8	120.4	158.3	115.0
	Apr	154.4	174.1	119.9	121.8	134.3	127.3	123.4	95.4	111.1	120.4	162.7	119.5
	May	156.0	176.7	120.5	126.3	135.0	127.6	123.6	95.4	111.4	120.5	164.4	119.7
	Jun	156.1	177.4	121.4	126.8	137.1	127.8	130.2	96.4	111.5	120.5	165.9	120.8
	July	156.4	177.4	122.9	127.3	138.0	128.1	130.3	96.4	115.6	120.5	166.6	121.0
	Aug	156.8	177.6	123.6	127.5	138.5	128.2	129.6	96.4	115.8	120.5	167.5	121.1
	Sept	156.7	179.1	125.0	127.7	139.3	128.3	131.6	96.4	116.1	120.5	168.8	121.4
	Oct	156.7	179.7	126.3	127.9	139.6	128.4	131.7	96.4	116.5	120.5	170.6	121.5
	Nov	157.2	180.4	127.4	128.1	140.4	128.4	131.8	96.4	116.7	120.5	171.8	121.5
	Dec	157.6	182.1	127.1	128.8	141.7	128.6	132.2	96.4	116.9	120.5	171.9	121.7
2011	Jan	158.2	183.4	127.5	129.1	142.3	128.7	133.7	96.4	117.1	133.2	172.7	122.6
	Feb	159.1	183.9	127.9	129.4	142.9	128.8	137.5	96.4	117.6	133.2	172.9	122.6
	Mar	160.5	186.0	128.5	130.9	144.6	129.1	137.7	96.4	118.5	133.2	173.7	122.8
	Apr	164.4	188.5	131.0	131.1	145.3	133.0	139.0	96.4	123.4	133.2	175.5	125.7
	May	165.8	191.3	132.1	131.8	146.7	133.3	142.8	91.2	124.1	133.2	179.3	126.1
	Jun	166.6	191.9	133.1	137.6	148.9	133.6	143.3	91.2	124.4	133.2	182.5	126.6
	Jul	167.0	192.2	134.4	138.2	149.5	133.6	143.4	91.2	124.5	133.2	183.4	126.7
	Aug	167.9	192.4	135.1	138.9	150.4	133.7	148.7	91.2	124.7	133.2	183.7	126.8
	Sept	168.8	192.4	135.8	140.0	152.9	133.9	148.8	91.2	124.8	133.2	184.5	126.9
	Oct	169.8	192.8	136.4	140.6	153.9	136.0	149.4	91.2	125.3	133.2	184.6	127.1
	Nov	170.7	192.9	137.2	141.2	154.3	136.1	152.6	91.2	125.3	133.2	185.3	127.2
	Dec	171.8	192.8	138.8	141.8	155.2	136.4	152.6	91.2	125.4	133.2	186.0	127.2
2012	Jan	172.3	193.5	139.6	141.9	155.6	136.5	153.4	91.2	125.6	141.5	187.1	127.7
	Feb	173.3	193.6	140.2	142.0	155.9	136.9	153.5	91.2	125.7	141.5	187.5	127.7
	Mar	174.6	196.0	140.7	142.4	156.6	137.2	153.5	91.2	125.9	141.7	189.5	127.7
	Apr	177.0	201.2	140.9	142.4	157.5	141.0	153.8	91.7	130.2	141.7	192.7	128.2
	May	178.4	204.7	141.3	147.4	158.1	141.3	157.8	91.7	130.3	141.7	193.7	128.3
	Jun	179.6	205.2	141.9	148.6	160.1	141.5	158.2	91.7	130.4	141.7	194.9	128.4
	Jul	180.4	205.8	142.5	148.4	160.6	142.1	159.3	91.7	130.9	141.7	195.3	128.6
	Aug	181.0	206.1	144.0	148.4	161.2	142.3	159.9	91.7	131.8	141.7	196.1	128.2
	Sept	181.7	206.9	145.5	148.5	161.9	142.6	164.2	91.7	132.1	141.7	199.3	128.2
	Oct	182.8	210.7	146.0	148.4	162.4	142.7	164.4	91.7	132.3	141.7	201.0	128.3
	Nov	183.4	215.5	146.8	148.5	163.0	142.7	168.2	91.7	132.5	141.7	203.8	128.5
	Dec	184.2	216.3	147.5	148.7	163.5	143.1	169.2	91.7	132.6	141.7	204.1	128.6
2013	Jan	185.2	216.9	148.0	148.8	164.0	146.8	170.0	91.7	132.6	148.4	204.6	129.2
	Feb	186.0	217.2	148.6	148.9	164.5	147.2	170.1	91.7	132.8	148.4	204.9	129.2
	Mar	187.1	222.1	149.1	149.5	165.2	147.4	170.4	91.7	133.0	148.4	205.6	129.3
% Change on Last month		0.6	2.3	0.4	0.4	0.5	0.1	0.1	0.0	0.2	0.0	0.3	0.1

TABLE 1: COST OF LIVING INDEX(Cont.)

	All Items Index	National Inflation Rate %	Monthly Change %	Towns & Cities Index 47.33	Urban Village Index 33.76	Rural Villages Index 18.91	Annual Inflation		
							Towns & Cities %	Urban Villages %	Rural %
2010 Jan	131.4	6.1	0.4	129.8	131.2	135.8	6.7	5.9	5.1
Feb	131.7	6.1	0.2	130.1	131.2	136.4	6.6	5.8	5.4
Mar	132.6	6.0	0.7	131.0	131.8	138.3	6.5	5.2	5.9
Apr	135.0	7.1	1.8	133.5	134.0	140.4	7.9	6.3	6.6
May	136.3	7.8	1.0	134.8	135.4	141.6	8.7	7.2	6.9
Jun	138.1	7.7	1.3	137.0	137.0	142.8	8.5	7.0	7.0
July	138.6	7.0	0.3	137.4	137.6	143.2	7.9	6.4	6.2
Aug	138.7	6.7	0.1	137.8	137.6	142.7	7.7	5.9	5.6
Sept	139.4	7.0	0.6	138.6	138.7	143.0	8.0	6.4	5.6
Oct	139.7	7.2	0.2	138.8	139.1	143.0	8.0	6.8	5.9
Nov	140.1	7.2	0.3	139.5	139.3	143.2	8.2	6.7	5.4
Dec	140.6	7.4	0.4	139.8	139.9	144.0	8.1	7.2	6.2
2011 Jan	141.8	7.9	0.8	141.3	141.0	144.5	8.8	7.5	6.4
Feb	142.9	8.5	0.8	142.4	142.2	145.5	9.5	8.4	6.6
Mar	143.8	8.5	0.7	143.2	143.2	146.6	9.3	8.7	6.0
Apr	146.0	8.2	1.5	145.3	145.5	148.8	8.9	8.5	6.0
May	147.6	8.3	1.1	146.9	146.9	150.5	9.0	8.5	6.2
Jun	149.0	7.9	0.9	148.4	148.1	152.0	8.3	8.1	6.4
Jul	149.3	7.8	0.3	148.9	148.3	152.3	8.4	7.7	6.3
Aug	150.8	8.7	1.0	150.4	149.8	153.4	9.1	8.9	7.5
Sept	151.4	8.6	0.4	150.9	150.6	153.9	8.9	8.6	7.6
Oct	152.0	8.8	0.4	151.4	151.5	154.6	9.0	8.9	8.1
Nov	153.0	9.2	0.6	152.4	152.7	155.0	9.3	9.6	8.2
Dec	153.5	9.2	0.4	152.9	153.1	155.9	9.4	9.4	8.3
2012 Jan	154.3	8.8	0.5	153.5	154.0	157.0	8.6	9.2	8.6
Feb	154.7	8.2	0.2	153.7	154.4	157.6	8.0	8.6	8.3
Mar	155.4	8.0	0.5	154.3	155.1	158.6	7.8	8.3	8.2
Apr	156.9	7.5	1.0	156.0	156.6	159.8	7.3	7.7	7.4
May	159.0	7.7	1.3	158.6	158.2	161.3	8.0	7.7	7.2
Jun	159.8	7.3	0.5	159.3	158.9	162.5	7.4	7.3	6.9
Jul	160.3	7.3	0.3	159.7	159.5	163.2	7.3	7.6	7.1
Aug	160.8	6.6	0.3	160.0	160.2	163.6	6.4	6.9	6.6
Sept	162.1	7.1	0.8	161.9	161.2	164.2	7.2	7.0	6.7
Oct	162.8	7.1	0.5	162.6	161.7	165.3	7.5	6.8	6.9
Nov	164.4	7.4	1.0	164.2	163.1	167.2	7.7	6.8	7.9
Dec	164.9	7.4	0.3	164.3	163.9	168.4	7.5	7.1	8.0
2013 Jan	165.9	7.5	0.6	165.0	164.8	170.0	7.5	7.0	8.3
Feb	166.2	7.5	0.2	165.2	165.0	170.7	7.5	6.9	8.3
Mar	167.1	7.6	0.6	166.0	166.2	171.8	7.5	7.2	8.3
% Change on last month	0.6			0.4	0.7	0.6			

Table 2: National Cost-of-Living Group & Section Indices (September 2006 = 100.0)

Group Section	Weights	This	Last	3 months	6 months	12 months	Percentage Change on:			
		month Mar 2013	month Feb 2013	ago Dec 2012	ago Sept 2012	ago Mar 2012	Last month	3 months ago	6 months ago	12 months ago
1 Food & Non-Alcoholic Beverages	21.84	187.1	186.0	184.2	181.7	174.6	0.6	1.6	3.0	7.1
1.1 Bread & Cereals	6.51	184.2	183.6	182.1	180.6	171.5	0.3	1.2	2.0	7.4
1.2 Meat (Fresh, Chilled & Frozen)	3.15	191.5	190.8	190.4	185.3	180.4	0.4	0.6	3.4	6.1
1.3 Fish (Fresh, Chilled & Frozen)	0.20	187.0	185.6	184.5	182.1	172.4	0.7	1.4	2.7	8.4
1.4 Milk, Cheese & Milk Products	2.19	187.6	185.9	184.9	183.3	178.7	0.9	1.5	2.3	5.0
1.5 Oils & Fats	0.90	226.9	225.0	222.8	217.6	213.0	0.8	1.8	4.2	6.5
1.6 Fruit	0.67	133.7	133.2	130.6	129.0	124.6	0.4	2.4	3.6	7.3
1.7 Vegetables	1.94	189.4	188.6	184.6	180.3	171.4	0.4	2.6	5.0	10.5
1.8 Sugar, Jam, Honey, Chocolate & Confectionery	1.36	192.5	190.1	188.4	185.9	177.9	1.3	2.2	3.6	8.2
1.9 Food not else where Classified	2.36	187.6	187.4	184.1	182.1	176.3	0.1	1.9	3.1	6.4
1.10 Coffee, Tea & Cocoa	0.63	204.9	202.8	202.2	201.8	193.5	1.1	1.3	1.5	5.9
1.11 Mineral Waters, Soft Drinks, Fruits & Veg. Juices	1.94	176.7	174.0	172.2	170.5	163.6	1.5	2.6	3.6	8.0
2 Alcoholic Beverages, Tobacco & Narcotics	9.29	222.1	217.2	216.3	206.9	196.0	2.3	2.7	7.4	13.3
2.1 Alcoholic Beverages	8.09	223.1	217.7	216.9	206.6	195.8	2.5	2.8	8.0	13.9
2.2 Tobacco	1.20	215.9	213.6	211.9	208.7	197.8	1.1	1.9	3.4	9.2
3 Clothing and Footwear	7.52	149.1	148.6	147.5	145.5	140.7	0.4	1.1	2.5	6.0
3.1 Clothing	3.33	168.8	168.1	166.6	164.6	160.1	0.4	1.3	2.5	5.4
3.2 Other articles of Clothing	1.82	135.8	135.1	134.0	131.6	126.4	0.5	1.3	3.1	7.4
3.3 Cleaning, Repair & Hire	0.03	183.7	183.1	183.0	180.3	170.6	0.4	0.4	1.9	7.7
3.4 Footwear	2.34	131.0	130.8	130.2	128.5	123.6	0.1	0.6	1.9	5.9
4 Housing, Water, Electr. Gas & Other Fuels	11.46	149.5	148.9	148.7	148.5	142.4	0.4	0.6	0.7	5.0
4.1 Rent paid by Tenants	5.68	132.4	131.3	131.3	131.1	128.4	0.8	0.8	1.0	3.1
4.2 Materials for Maintenance & Repair of dwellings	2.57	146.2	145.6	144.3	143.7	141.8	0.4	1.3	1.7	3.1
4.3 Water Supply & Misc. Services	1.14	151.4	151.4	151.4	151.4	102.2	0.0	0.0	0.0	48.2
4.4 Electricity Gas and other Fuels	2.06	199.8	200.1	200.4	200.8	204.0	(0.2)	(0.3)	(0.5)	(2.1)
5 Furnishing, H/H Equipment & Routine Maintenance	6.76	165.2	164.5	163.5	161.9	156.6	0.5	1.0	2.0	5.5
5.1 Furniture & Furnishing	2.31	139.1	138.9	137.9	136.6	132.3	0.2	0.9	1.8	5.2
5.2 Carpets & Other Floor Coverings	0.04	151.1	150.4	150.3	149.1	145.8	0.5	0.5	1.3	3.6
5.3 Household Textiles	0.44	153.1	152.3	151.7	150.1	145.6	0.5	0.9	2.0	5.2
5.4 Household Appliances	0.69	140.0	139.6	139.2	137.6	133.0	0.3	0.6	1.7	5.2
5.5 Glassware, Tableware & Household Utensils	0.44	175.4	174.2	173.8	171.6	161.1	0.7	0.9	2.2	8.9
5.6 Small Tools, Miscellaneous Accessories	0.06	170.9	170.0	168.9	167.9	165.4	0.5	1.2	1.8	3.3
5.7 Goods & Services for H/hold Maintenance	2.79	193.4	192.2	191.1	189.3	183.6	0.7	1.2	2.2	5.4

**Table 2: National Cost-of-Living Group & Section Indices (September 2006 = 100.0)
(Cont.)**

Group Section	Weights	This	Last	3 months	6 months	12 months	Percentage Change on:			
		month	month	ago	ago	ago	Last	3 months	6 months	12 months
		Mar 2013	Feb 2013	Dec 2012	Sept 2012	Mar 2012	month	ago	ago	ago
6 Health	2.71	147.4	147.2	143.1	142.6	137.2	0.1	3.0	3.4	7.4
6.1 Medical Products, App. & Equip.	0.35	175.3	174.0	171.1	167.9	156.8	0.7	2.4	4.4	11.8
6.2 Out-patient Services	0.66	149.8	149.8	148.4	148.0	133.2	0.0	0.9	1.2	12.5
6.3 Hospital Services	1.71	140.7	140.7	135.3	135.3	134.7	0.0	4.0	4.0	4.5
7 Transport	18.98	170.4	170.1	169.2	164.2	153.5	0.1	0.7	3.8	11.0
7.1 Purchase of Vehicles	5.89	151.4	151.4	151.4	151.0	148.9	0.0	0.0	0.2	1.7
7.2 Operation of Personal Transport	10.92	179.4	179.0	178.8	171.8	154.5	0.2	0.3	4.4	16.1
7.3 Transport Services	2.17	176.5	176.5	169.0	161.1	160.9	0.0	4.4	9.5	9.7
8 Communication	3.01	91.7	91.7	91.7	91.7	91.2	0.0	0.0	0.0	0.6
8.1 Postal Services	0.04	209.9	209.9	209.9	209.9	170.8	0.0	0.0	0.0	22.9
8.2 Telephone & Telefax Equipment	0.74	66.6	66.6	66.6	66.6	66.6	0.0	0.0	0.0	0.0
8.3 Telephone & Telefax Services	2.23	98.0	98.0	98.0	98.0	97.9	0.0	0.0	0.0	0.0
9 Recreation & Culture	2.22	133.0	132.8	132.6	132.1	125.9	0.2	0.3	0.7	5.6
9.1 Audio Visual, Photographic & Info. Proce. Equip.	1.09	106.0	105.7	105.6	105.0	103.0	0.3	0.3	0.9	2.9
9.2 Other Recreational Items & Equip.	0.18	160.0	159.4	158.5	157.6	150.1	0.4	1.0	1.6	6.6
9.3 Recreational & Cultural Services	0.76	149.3	149.2	149.2	149.0	137.5	0.0	0.0	0.2	8.6
9.4 Newspapers, Books & Stationary	0.19	195.7	195.4	194.3	193.4	186.7	0.1	0.7	1.2	4.8
10 Education	3.37	148.4	148.4	141.7	141.7	141.7	0.0	4.7	4.7	4.7
10.1 Pre-Primary & Primary Education	1.10	185.1	185.1	173.5	173.5	173.4	0.0	6.7	6.7	6.8
10.2 Secondary & Tertiary Education	2.26	130.5	130.5	126.2	126.2	126.2	0.0	3.4	3.4	3.4
11 Restaurants & Hotels	3.27	205.6	204.9	204.1	199.3	189.5	0.3	0.7	3.2	8.5
11.1 Restaurants, Cafes and the Like	3.08	208.4	207.7	206.9	201.9	191.9	0.3	0.7	3.2	8.6
11.2 Accommodation Services	0.19	160.1	160.1	158.9	157.4	149.8	0.0	0.7	1.7	6.9
12 Miscellaneous Goods & Services	9.57	129.3	129.2	128.6	128.2	127.7	0.1	0.5	0.8	1.2
12.1 Personal Care	0.66	154.6	154.2	153.7	153.2	147.5	0.2	0.6	0.9	4.8
12.2 Personal Effects N.E.C.	0.04	133.1	132.2	132.1	131.6	126.5	0.7	0.8	1.1	5.2
12.3 Social Protection	0.14	160.5	160.5	147.8	147.8	146.8	0.0	8.6	8.6	9.3
12.4 Insurance	6.32	128.7	128.7	128.9	128.9	129.6	0.0	(0.2)	(0.2)	(0.7)
12.5 Financial Services	0.18	147.0	146.7	145.6	142.8	138.0	0.2	1.0	2.9	6.5
12.6 Taxes Licences, Fees	2.24	120.0	119.9	117.7	116.6	114.7	0.1	2.0	2.9	4.7
All-Items Index	100.0	167.1	166.2	164.9	162.1	155.4	0.6	1.3	3.1	7.6

TABLE 3: COST-OF-LIVING INDEX BY TRADABILITY (September 2006 = 100.0)

Weights	All Items		Non-Tradable		Domestic Tradable		Imported Tradable		All Tradable	
	Index	Inflation	Index	Inflation	Index	Inflation	Index	Inflation	Index	Inflation
	100.00		30.92		23.91		45.17		69.08	
2010 Jan	131.4	6.1	123.8	5.7	149.3	3.0	127.2	8.5	134.6	6.1
Feb	131.7	6.1	124.0	5.6	149.5	2.2	127.4	9.0	134.9	6.1
Mar	132.6	6.0	124.6	4.9	150.5	2.0	128.7	9.3	136.0	6.4
Apr	135.0	7.1	126.9	6.2	153.7	3.5	130.6	10.1	138.3	7.5
May	136.3	7.8	128.7	7.5	154.9	4.2	131.7	10.4	139.5	8.0
Jun	138.1	7.7	129.7	7.3	154.8	4.2	135.1	10.3	141.6	7.9
July	138.6	7.0	129.9	6.9	155.3	3.8	135.7	9.2	142.2	7.1
Aug	138.7	6.7	130.0	6.8	155.3	3.8	135.9	8.5	142.4	6.7
Sept	139.4	7.0	130.9	6.9	155.5	4.3	136.8	8.8	143.1	7.1
Oct	139.7	7.2	131.0	7.0	155.6	4.3	137.3	9.1	143.4	7.3
Nov	140.1	7.2	131.2	7.0	155.9	4.3	137.9	9.0	144.0	7.3
Dec	140.6	7.4	131.6	6.9	156.5	5.0	138.4	9.3	144.5	7.7
2011 Jan	141.8	7.9	132.8	7.3	158.2	5.9	139.2	9.5	145.6	8.2
Feb	142.9	8.5	132.9	7.2	158.9	6.2	141.3	10.9	147.2	9.1
Mar	143.8	8.5	133.7	7.3	160.1	6.4	142.2	10.5	148.2	9.0
Apr	146.0	8.2	135.2	6.5	162.2	5.5	144.8	10.9	150.6	8.9
May	147.6	8.3	135.3	5.2	163.5	5.5	147.6	12.1	152.9	9.6
Jun	149.0	7.9	138.0	6.4	164.8	6.5	148.1	9.6	153.6	8.5
Jul	149.3	7.8	138.0	6.3	165.4	6.5	148.6	9.5	154.2	8.4
Aug	150.8	8.7	139.0	7.0	165.7	6.7	150.9	11.1	155.8	9.5
Sept	151.4	8.6	139.9	6.9	166.3	6.9	151.3	10.6	156.3	9.2
Oct	152.0	8.8	140.3	7.1	167.0	7.4	152.1	10.8	157.0	9.5
Nov	153.0	9.2	140.4	7.0	167.5	7.4	153.9	11.6	158.4	10.0
Dec	153.5	9.2	140.7	6.9	168.0	7.4	154.6	11.8	159.1	10.1
2012 Jan	154.3	8.8	141.1	6.2	169.6	7.2	155.3	11.5	160.0	9.9
Feb	154.7	8.2	141.0	6.1	170.4	7.3	155.7	10.2	160.6	9.1
Mar	155.4	8.0	141.4	5.8	172.2	7.6	156.1	9.8	161.4	8.9
Apr	156.9	7.5	142.4	5.3	176.0	8.5	156.7	8.2	163.2	8.3
May	159.0	7.7	144.2	6.5	178.0	8.9	158.9	7.7	165.3	8.1
Jun	159.8	7.3	145.0	5.1	178.7	8.4	159.7	7.8	166.0	8.1
Jul	160.3	7.3	145.2	5.2	179.0	8.2	160.5	8.0	166.7	8.1
Aug	160.8	6.6	145.7	4.8	179.3	8.2	161.1	6.7	167.2	7.3
Sept	162.1	7.1	146.1	4.4	179.9	8.2	163.4	8.0	168.9	8.1
Oct	162.8	7.1	146.3	4.3	181.6	8.7	164.0	7.8	169.9	8.2
Nov	164.4	7.4	146.7	4.5	183.7	9.7	165.9	7.8	172.0	8.5
Dec	164.9	7.4	147.3	4.7	184.5	9.8	166.3	7.5	172.5	8.4
2013 Jan	165.9	7.5	148.4	5.2	185.6	9.5	167.1	7.6	173.4	8.3
Feb	166.2	7.5	148.5	5.3	186.0	9.2	167.5	7.6	173.8	8.2
Mar	167.1	7.6	148.8	5.3	188.4	9.4	168.1	7.7	175.0	8.4
% Change on last month	0.6		0.2		1.3		0.3		0.7	

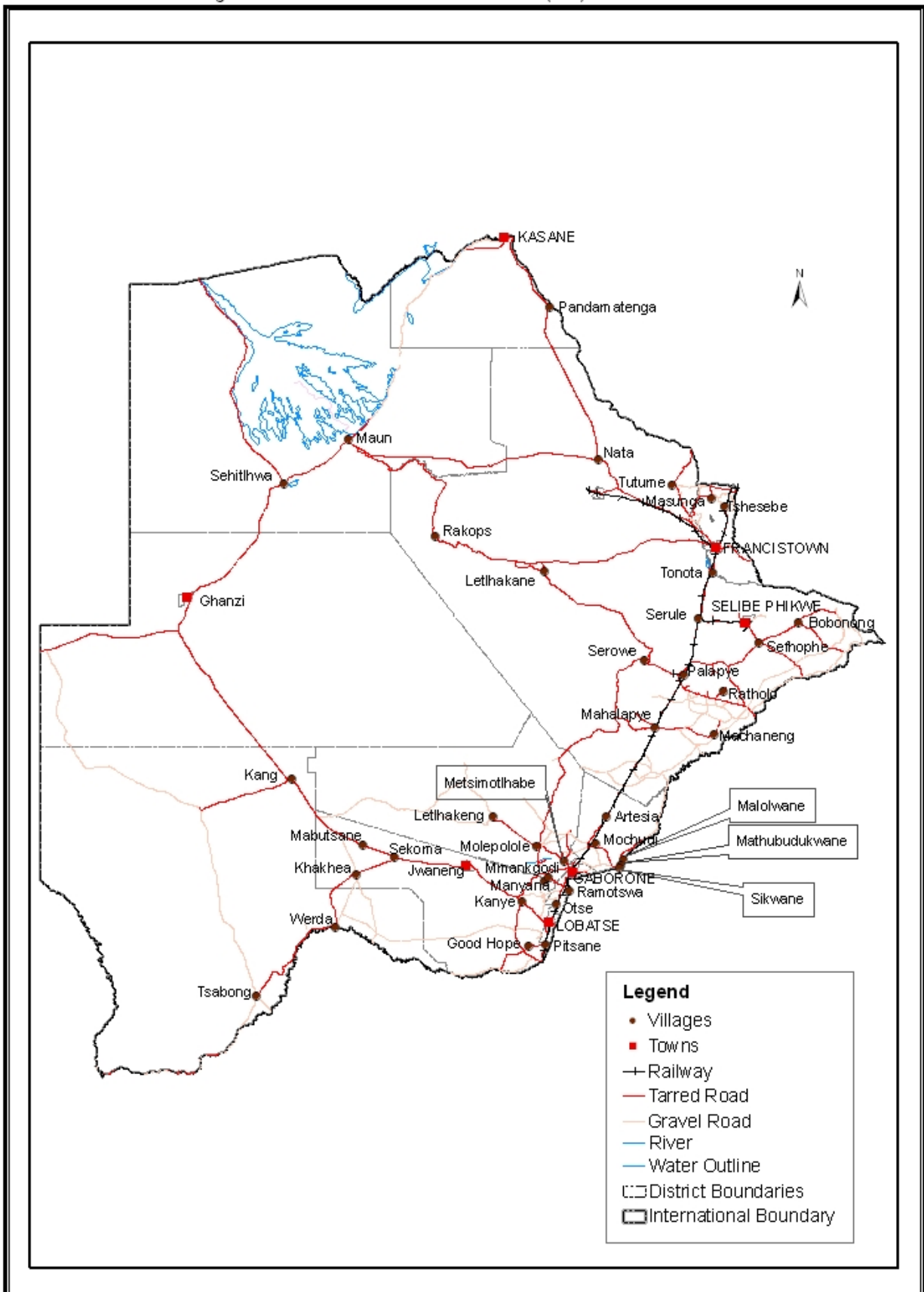
TABLE 4: Core Inflation Rates by Exclusion and Trimmed Mean

Year	Month	Consumer Price Index (Trimmed Mean) (September 2006 = 100)	Core Monthly Inflation Rate (Trimmed Mean) (percentage)	Consumer Price Index (Excluding Administered Prices) (September 2006 = 100)	Core Monthly Inflation (Excluding Administered Prices) (percentage)
2010					
	Jan	129.7	6.7	135.2	5.9
	Feb	129.0	6.7	135.5	5.8
	Mar	130.0	6.5	136.7	5.6
	Apr	133.1	7.7	139.1	6.8
	May	133.2	8.3	140.2	7.2
	Jun	135.0	8.1	141.0	6.9
	July	136.6	7.6	141.5	6.1
	Aug	135.4	7.2	142.0	6.3
	Sept	136.8	7.4	142.7	6.5
	Oct	137.2	7.6	143.1	6.8
	Nov	137.9	7.6	143.6	6.7
	Dec	137.5	7.7	144.2	7.1
2011					
	Jan	139.6	8.0	145.5	7.6
	Feb	142.1	8.6	146.0	7.7
	Mar	142.6	8.4	147.1	7.6
	Apr	143.4	8.0	149.4	7.4
	May	148.7	8.2	150.5	7.3
	Jun	148.8	7.6	151.4	7.4
	July	150.3	7.4	151.9	7.3
	Aug	153.7	8.4	152.5	7.4
	Sept	154.8	8.1	153.2	7.4
	Oct	155.6	8.3	154.0	7.6
	Nov	156.3	8.5	154.4	7.5
	Dec	156.9	8.5	155.1	7.5
2012					
	Jan	157.9	8.1	156.0	7.2
	Feb	158.0	7.8	156.5	7.2
	Mar	159.2	7.6	157.4	7.0
	Apr	158.9	7.3	159.2	6.6
	May	160.7	7.3	160.2	6.5
	Jun	163.9	6.8	161.2	6.4
	Jul	164.5	6.8	161.8	6.5
	Aug	164.0	6.3	162.5	6.6
	Sept	165.6	6.5	163.2	6.5
	Oct	163.7	6.7	164.1	6.6
	Nov	165.0	7.1	165.1	6.9
	Dec	165.7	7.1	165.7	6.8
2013					
	Jan	166.8	7.2	166.8	6.9
	Feb	167.2	7.2	167.2	6.9
	Mar	168.3	7.3	168.4	7.0

TABLE 5: Average Annual Inflation (September 2006 = 100.0)

Group	Weights	YEAR				
		2008	2009	2010	2011	2012
1 Food & Non-Alcoholic Beverages	21.84	20.2	14.7	3.6	6.9	8.0
2 Alcoholic Beverages,Tobacco & Narcotics	9.29	13.2	35.2	7.1	8.4	7.6
3 Clothing and Footwear	7.52	2.0	8.4	8.0	8.9	7.5
4 Housing, Water, Electr. Gas & Other Fuels	11.46	8.1	4.8	6.4	8.4	7.7
5 Furnishing, H/H Equipment & Routine Maintenance	6.76	6.0	11.9	9.4	9.0	7.3
6 Health	2.71	11.3	5.5	2.7	4.5	5.9
7 Transport	18.98	21.2	(8.4)	12.1	13.2	10.8
8 Communication	3.01	(0.3)	(0.3)	1.2	(3.0)	(1.4)
9 Recreation & Culture	2.22	2.3	5.0	6.0	8.3	5.8
10 Education	3.37	3.9	3.9	5.8	10.6	6.4
11 Restaurants & Hotels	3.27	12.7	18.8	9.0	9.3	8.4
12 Miscellaneous Goods & Services	9.57	4.9	3.8	7.0	5.3	2.0
All-Items Index	100.0	12.6	8.2	6.9	8.5	7.5

Prices Collection Coverage for Botswana Consumer Price Index (CPI) - 2013



Glossary

DEFINITION OF WORDS USED

Consumer Price Index (CPI) is an index which measures price changes in goods and services with reference to a base period.

Inflation is a measurement of prices movement of goods and services in a particular country.

Domestic Tradable refers to the goods and services which a country (Botswana) can export to other countries.

Imported Tradable represents the goods and services which a country (Botswana) imports from other countries (trading partners).

Non-Tradable refers to the goods and services which a country cannot either export or import to other countries.

All –Tradable refers to the total of **domestic** and **imported tradable**.

Trimmed Mean Core Inflation- attempts to remove 8 percent (by weight) of the commodity sub-groups with the largest price changes at each of the ends of an ordered series of price changes in any given month.

Core inflation by Exclusion is a measure used to remove the volatility inherent in prices that are only adjusted periodically and not always in response to currently prevailing market forces.