

CONSUMER PRICE INDEX

July 2014

STATISTICS BOTSWANA

Copyrights © Statistics Botswana 2014

Contact Statistician:
Phaladi Labobedi

Tel: (267) 3190714

Fax: (267) 3952 201

Statistics Botswana. Private Bag 0024 Botswana
Tel: (267) 367 1300. **Fax:** (267) 395 2201. **Email:** csobots.@gov.bw **Website:** www.cso.gov.bw

CONTENTS

COMMENTARY

Section 1: **Headline Inflation**

Section 2: **Core Inflation**

CHARTS

1. **National Rates of Inflation, January 2012 – July 2014**
2. **Monthly Changes in the Cost-of-Living Index, January 2012 – July 2014**
3. **Non-Tradable Inflation Rates, January 2012 – July 2014**
4. **Tradable Inflation Rates, January 2012 - July 2014**

TABLES

1. **Cost-of-Living Index Series (January 2012 – July 2014)**
2. **National Cost-of-Living Group and Section Indices**
3. **Cost-of-Living Index by Tradability (January 2012 – July 2014)**
4. **Core Inflation Rates**
5. **Annual average inflation rates 2008-2013**

GLOSSARY

COMMENTARY

Section 1: Headline Inflation

The annual inflation rate was 4.5 percent in July 2014, a decrease of 0.1 of a percentage point on the June 2014 rate of 4.6 percent. Annual inflation in July 2014 was also lower than the 5.7 percent recorded during the same month in 2013. The latter was attributed to the slow price change of commodities especially the main components of Transport and Food & Non-Alcoholic Beverages which dropped by 6.7 and 1.4 percentage points respectively. The inflation rates for regions between June and July 2014, indicated that cities & towns' went down to 4.3 from 4.4 percent, while rural villages' dropped to 5.0 percent from 5.1 percent while Urban villages' inflation rate remained unchanged at 4.5 percent.

The national Consumer Price Index registered an increase of 0.1 percent, advancing from 176.8 in June to 177.0 in July 2014. The cities and towns' index moved from 175.0 to 175.8, recording an increase of 0.1 percent. The urban villages' index realized a rise of 0.1 percent, from 185.6 to 175.9 between the two months, while the rural villages' index remained the same at 182.1.

Group indices were stable between June and July, recording changes of less than 1.0 percent.

The Clothing and Footwear group index recorded an increase of 0.5 percent, from 161.1 in June to 161.9 in July. The increase was attributed to the general increase in the section indices.

The Restaurants & Hotels group index upped from 226.7 to 227.4, registering an increase of 0.3 percent between June and July. The increase was a result of the constituent section index of Restaurants, Café's and the Like, which increased by 0.3 percent.

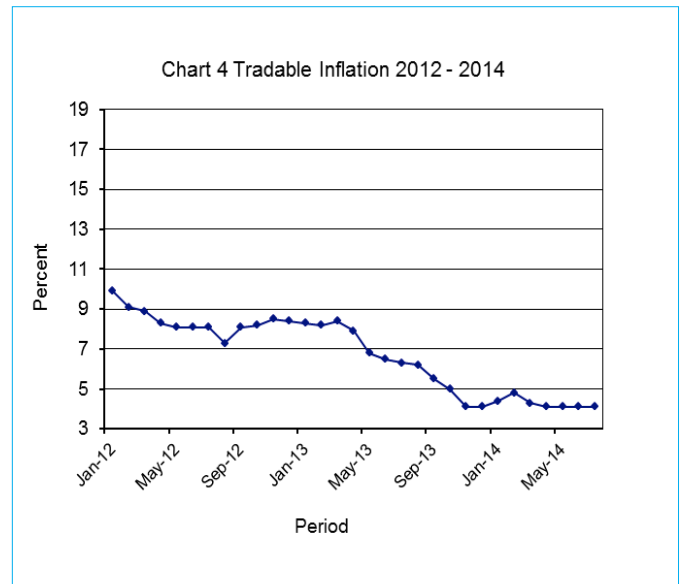
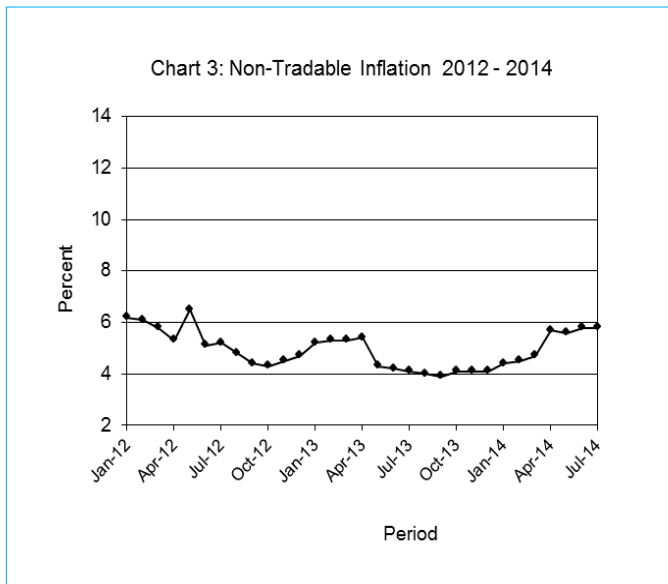
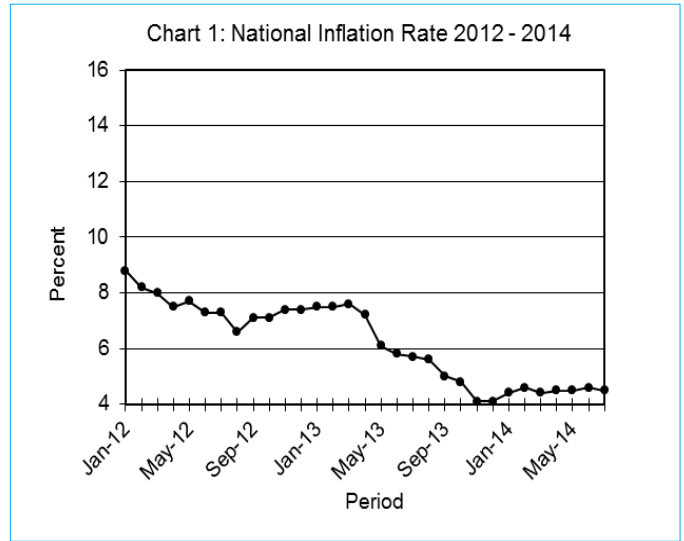
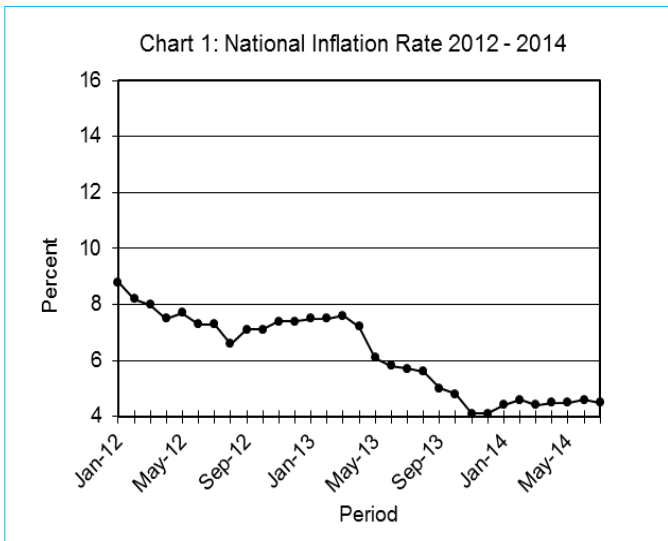
The Food & Non-Alcoholic Beverages group index moved from 194.6 to 194.9, registering an increase of 0.1 percent between June and July. The rise was because of the general increase in the section indices, except Sugar, Jam, Honey, Chocolate & Confectionery, Oils & Fats and Meat (Fresh, Chilled & Frozen) which remained stable.

The Domestic Tradable inflation went up by 0.1 of a percentage point in July 2014, registering 5.5 percent against 5.4 percent in realized in June. All-Tradable inflation rate for July 2014 remained at 4.1 percent the same rate as in the previous June. The Imported Tradable inflation rate recorded a decrease of 0.2 of a percentage point, from 3.4 percent in June to 3.2 percent in July. The Non-Tradable inflation rate registered a decrease of 0.1 percent from 5.8 percent in June to 5.7 percent in July.

The All-Tradable index moved from 181.1 in June to 184.4 in July, recording an increase of 0.2 percent. The Imported Tradable index also registered an increase of 0.2 percent, moving from 175.2 to 175.5. The Domestic Tradable index advanced from 201.5 to 201.7, a rise of 0.1 percent. The Non-Tradable index remained unchanged at 159.8.

Section 2: Core Inflation

The Trimmed Mean Core Inflation and the Core Inflation rate by exclusion remained unchanged at 4.2 percent and 5.3 percent respectively, between June and July 2014.




Kevin Masupe
 Acting Statistician General
 15th August 2014

TABLE 1: COST OF LIVING INDEX (September 2006 =100.0)

		Food	Alcohol & Tobacco	Clothing & Footwear	Housing	Furniture etc	Health	Transport	Com- munica- tion	Rec. & Culture	Edu- cation	Rest. & Ho- tels	Miscel- laneous
Weights		21.84	9.29	7.52	11.46	6.76	2.71	18.98	3.01	2.22	3.37	3.27	9.57
(1)	(2)	(3)	(4)	(5)	(6)	(7)	(8)	(9)	(10)	(11)	(12)	(13)	(14)
2012	Jan	172.3	193.5	139.6	141.9	155.6	136.5	153.4	91.2	125.6	141.5	187.1	127.7
	Feb	173.3	193.6	140.2	142.0	155.9	136.9	153.5	91.2	125.7	141.5	187.5	127.7
	Mar	174.6	196.0	140.7	142.4	156.6	137.2	153.5	91.2	125.9	141.7	189.5	127.7
	Apr	177.0	201.2	140.9	142.4	157.5	141.0	153.8	91.7	130.2	141.7	192.7	128.2
	May	178.4	204.7	141.3	147.4	158.1	141.3	157.8	91.7	130.3	141.7	193.7	128.3
	Jun	179.6	205.2	141.9	148.6	160.1	141.5	158.2	91.7	130.4	141.7	194.9	128.4
	Jul	180.4	205.8	142.5	148.4	160.6	142.1	159.3	91.7	130.9	141.7	195.3	128.6
	Aug	181.0	206.1	144.0	148.4	161.2	142.3	159.9	91.7	131.8	141.7	196.1	128.2
	Sept	181.7	206.9	145.5	148.5	161.9	142.6	164.2	91.7	132.1	141.7	199.3	128.2
	Oct	182.8	210.7	146.0	148.4	162.4	142.7	164.4	91.7	132.3	141.7	201.0	128.3
	Nov	183.4	215.5	146.8	148.5	163.0	142.7	168.2	91.7	132.5	141.7	203.8	128.5
	Dec	184.2	216.3	147.5	148.7	163.5	143.1	169.2	91.7	132.6	141.7	204.1	128.6
2013	Jan	185.2	216.9	148.0	148.8	164.0	146.8	170.0	91.7	132.6	148.4	204.6	129.2
	Feb	186.0	217.2	148.6	148.9	164.5	147.2	170.1	91.7	132.8	148.4	204.9	129.2
	Mar	187.1	222.1	149.1	149.5	165.2	147.4	170.4	91.7	133.0	148.4	205.6	129.3
	Apr	187.7	226.1	150.4	152.2	165.8	147.6	170.5	91.7	135.9	148.4	208.2	129.0
	May	188.3	226.7	151.5	152.2	166.3	147.8	170.7	91.7	136.0	148.4	210.1	129.3
	Jun	188.6	226.9	152.3	153.4	167.4	148.4	170.7	91.7	136.1	148.4	210.6	129.3
	Jul	188.8	227.2	152.9	153.5	167.9	148.7	171.2	91.7	136.3	148.4	210.8	129.6
	Aug	189.5	227.5	153.3	153.7	168.2	149.0	171.4	91.7	136.5	148.4	213.0	129.7
	Sept	190.2	228.0	153.8	154.5	169.1	149.1	171.4	92.0	137.1	148.4	213.8	129.8
	Oct	190.7	228.2	154.3	154.7	169.5	150.2	171.5	92.0	137.4	148.4	214.5	130.8
	Nov	191.2	229.2	155.3	154.8	170.8	150.4	172.1	92.0	138.4	148.4	215.8	131.0
	Dec	191.4	231.0	155.9	155.2	171.5	150.7	172.2	92.1	138.6	148.4	218.5	131.1
2014	Jan	191.9	234.8	156.9	155.4	171.8	157.4	173.2	92.1	139.1	159.4	221.9	131.6
	Feb	192.6	239.9	157.7	155.5	171.9	157.6	173.3	92.1	139.3	159.4	223.1	131.6
	Mar	193.1	243.3	158.5	156.5	173.8	157.8	172.2	92.1	139.6	159.4	224.2	131.7
	Apr	193.8	245.9	159.1	158.4	174.0	158.8	172.3	92.1	141.6	159.4	225.2	137.7
	May	194.3	247.5	160.0	158.5	174.4	159.0	172.3	92.1	141.8	159.4	226.2	137.8
	Jun	194.6	247.8	161.1	159.2	176.1	162.4	172.3	92.1	141.9	159.4	226.7	137.9
	Jul	194.9	248.1	161.9	159.2	176.3	162.5	172.5	92.1	142.0	159.4	227.4	137.9
% Change on last month		0.1	0.1	0.5	0.0	0.1	0.1	0.1	0.0	0.1	0.0	0.3	0.0

TABLE 1: COST OF LIVING INDEX(Cont.)

		All Items Index	National Inflation Rate	Monthly Change	Towns & Cities Index	Urban Village Index	Rural Villages Index	Annual Inflation		
			%	%	47.33	33.76	18.91	Towns & Cities	Urban Villages	Rural
								%	%	%
2012	Jan	154.3	8.8	0.5	153.5	154.0	157.0	8.6	9.2	8.6
	Feb	154.7	8.2	0.2	153.7	154.4	157.6	8.0	8.6	8.3
	Mar	155.4	8.0	0.5	154.3	155.1	158.6	7.8	8.3	8.2
	Apr	156.9	7.5	1.0	156.0	156.6	159.8	7.3	7.7	7.4
	May	159.0	7.7	1.3	158.6	158.2	161.3	8.0	7.7	7.2
	Jun	159.8	7.3	0.5	159.3	158.9	162.5	7.4	7.3	6.9
	Jul	160.3	7.3	0.3	159.7	159.5	163.2	7.3	7.6	7.1
	Aug	160.8	6.6	0.3	160.0	160.2	163.6	6.4	6.9	6.6
	Sept	162.1	7.1	0.8	161.9	161.2	164.2	7.2	7.0	6.7
	Oct	162.8	7.1	0.5	162.6	161.7	165.3	7.5	6.8	6.9
	Nov	164.4	7.4	1.0	164.2	163.1	167.2	7.7	6.8	7.9
	Dec	164.9	7.4	0.3	164.3	163.9	168.4	7.5	7.1	8.0
2013	Jan	165.9	7.5	0.6	165.0	164.8	170	7.5	7.0	8.3
	Feb	166.2	7.5	0.2	165.2	165.0	170.7	7.5	6.9	8.3
	Mar	167.1	7.6	0.6	166.0	166.2	171.8	7.5	7.2	8.3
	Apr	168.2	7.2	0.6	167.3	167.4	172.1	7.3	6.9	7.7
	May	168.7	6.1	0.3	168.0	167.5	172.5	5.9	5.9	6.9
	Jun	169.1	5.8	0.2	168.1	168.1	173.3	5.5	5.8	6.6
	Jul	169.4	5.7	0.2	168.5	168.3	173.5	5.5	5.5	6.4
	Aug	169.8	5.6	0.2	168.8	168.7	174.0	5.5	5.3	6.4
	Sept	170.2	5.0	0.3	169.1	169.2	174.7	4.5	5.0	6.4
	Oct	170.6	4.8	0.2	169.4	169.6	175.4	4.2	4.9	6.1
	Nov	171.2	4.1	0.3	169.9	170.0	176.4	3.5	4.3	5.5
	Dec	171.7	4.1	0.3	170.2	170.5	177.3	3.6	4.0	5.3
2014	Jan	173.1	4.4	0.9	171.7	172.2	178.6	4.0	4.5	5.0
	Feb	173.9	4.6	0.4	172.6	172.7	179.4	4.5	4.7	5.1
	Mar	174.5	4.4	0.3	173.2	173.4	179.6	4.4	4.3	4.6
	Apr	175.9	4.5	0.8	174.7	174.5	181.2	4.4	4.3	5.3
	May	176.3	4.5	0.2	174.9	175.2	181.5	4.2	4.6	5.2
	Jun	176.8	4.6	0.3	175.5	175.6	182.1	4.4	4.5	5.1
	Jul	177.0	4.5	0.1	175.8	175.9	182.1	4.3	4.5	5.0
% Change on last month		0.1			0.1	0.1	0.0			

TABLE 2 :National Cost-of-Living Group and Section Indices

(September 2006=100.0)

Group Section	Weights	This month July 2014	Last month June 2014	3 months ago April 2014	6 months ago Jan 2013	12 months ago July 2013	Percentage Change on			
							Last month	3 months ago	6 months ago	12 months ago
1 Food & Non-Alcoholic Beverages	21.84	194.9	194.6	193.8	191.9	188.8	0.1	0.5	1.5	3.2
1.1 Bread & Cereals	6.51	188.2	188.0	187.7	187.0	185.3	0.1	0.3	0.6	1.5
1.2 Meat (Fresh, Chilled & Frozen)	3.15	201.8	201.7	200.7	197.6	192.9	0.0	0.5	2.1	4.6
1.3 Fish (Fresh, Chilled & Frozen)	0.20	196.6	196.2	195.7	195.6	191.0	0.2	0.5	0.5	3.0
1.4 Milk, Cheese & Milk Products	2.19	196.0	194.9	193.8	192.4	189.2	0.6	1.1	1.9	3.6
1.5 Oils & Fats	0.90	234.6	234.7	234.5	233.4	229.4	(0.0)	0.0	0.5	2.3
1.6 Fruit	0.67	142.0	141.6	140.8	138.9	136.5	0.2	0.8	2.2	4.0
1.7 Vegetables	1.94	203.8	203.7	200.5	195.3	190.1	0.1	1.7	4.4	7.2
1.8 Sugar, Jam, Honey, Chocolate & Confectionery	1.36	200.4	200.5	199.2	198.2	194.0	(0.1)	0.6	1.1	3.3
1.9 Food not else where Classified	2.36	193.1	192.8	192.7	192.1	189.3	0.2	0.2	0.5	2.0
1.10 Coffee, Tea & Cocoa	0.63	216.2	215.7	215.1	212.3	207.7	0.3	0.5	1.9	4.1
1.11 Mineral Waters, Soft Drinks, Fruits & Veg. Juices	1.94	186.9	186.8	186.4	183.1	180.4	0.1	0.3	2.1	3.6
2 Alcoholic Beverages, Tobacco & Narcotics	9.29	248.1	247.8	245.9	234.8	227.2	0.1	0.9	5.7	9.2
2.1 Alcoholic Beverages	8.09	245.2	245.0	243.9	236.0	228.2	0.1	0.6	3.9	7.5
2.2 Tobacco	1.20	267.3	266.7	259.1	226.6	220.8	0.2	3.1	17.9	21.1
3 Clothing and Footwear	7.52	161.9	161.1	159.1	156.9	152.9	0.5	1.8	3.2	5.8
3.1 Clothing	3.33	185.6	184.4	181.7	178.4	174.4	0.6	2.1	4.0	6.4
3.2 Other articles of Clothing	1.82	145.7	145.2	144.2	142.9	137.8	0.4	1.1	2.0	5.7
3.3 Cleaning, Repair & Hire	0.03	202.0	201.9	201.7	200.3	193.3	0.1	0.1	0.9	4.5
3.4 Footwear	2.34	140.1	139.6	137.8	136.6	133.5	0.3	1.7	2.6	4.9
4 Housing, Water, Electr. Gas & Other Fuels	11.46	159.2	159.2	158.4	155.4	153.5	0.0	0.5	2.5	3.7
4.1 Rent paid by Tenants	5.68	137.8	137.8	136.5	134.6	133.0	0.0	1.0	2.4	3.6
4.2 Materials for Maintenance & Repair of dwellings	2.57	151.8	151.5	151.0	150.0	147.2	0.2	0.5	1.1	3.1
4.3 Water Supply & Misc. Services	1.14	160.9	160.9	160.9	160.9	160.2	0.0	0.0	0.0	0.4
4.4 Electricity Gas and other Fuels	2.06	226.6	226.7	226.5	216.1	214.2	(0.0)	0.0	4.9	5.8
5 Furnishing, H/H Equipment & Routine Maintenance	6.76	176.3	176.1	174.0	171.8	167.9	0.1	1.3	2.7	5.0
5.1 Furniture & Furnishing	2.31	149.9	149.7	149.1	148.3	142.4	0.2	0.5	1.1	5.3
5.2 Carpets & Other Floor Coverings	0.04	162.2	158.8	158.7	156.7	151.9	2.2	2.2	3.6	6.8
5.3 Household Textiles	0.44	164.0	163.8	162.3	160.4	154.5	0.1	1.0	2.3	6.1
5.4 Household Appliances	0.69	150.4	150.0	147.7	145.5	142.4	0.3	1.8	3.4	5.6
5.5 Glassware, Tableware & Household Utensils	0.44	185.9	185.8	185.0	182.6	177.9	0.0	0.5	1.8	4.5
5.6 Small Tools, Miscellaneous Accessories	0.06	180.4	180.1	178.9	176.9	174.0	0.2	0.8	1.9	3.7
5.7 Goods & Services for H/hold Maintenance	2.79	205.1	204.9	201.3	197.8	195.9	0.1	1.9	3.7	4.7

TABLE 2 :National Cost-of-Living Group and Section Indices (September 2006=100.0) cont...

Group Section	Weights	This month July 2014	Last month June 2014	3 months ago April 2014	6 months ago Jan 2013	12 months ago July 2013	Percentage Change on			
							Last month	3 months ago	6 months ago	12 months ago
6 Health	2.71	162.5	162.4	158.8	157.4	148.7	0.1	2.3	3.2	9.3
6.1 Medical Products, App. & Equip.	0.35	203.6	202.7	200.3	197.0	185.2	0.5	1.7	3.4	9.9
6.2 Out-patient Services	0.66	167.7	167.7	167.7	163.7	149.8	0.0	0.0	2.5	12.0
6.3 Hospital Services	1.71	152.1	152.1	146.9	146.9	140.7	0.0	3.5	3.5	8.1
7 Transport	18.98	172.5	172.3	172.3	173.2	171.2	0.1	0.2	(0.4)	0.8
7.1 Purchase of Vehicles	5.89	151.1	151.0	150.9	155.1	152.2	0.1	0.1	(2.6)	(0.8)
7.2 Operation of Personal Transport	10.92	183.1	182.8	182.7	182.0	180.4	0.1	0.2	0.6	1.5
7.3 Transport Services	2.17	177.8	177.8	177.8	177.7	176.5	0.0	0.0	0.0	0.7
8 Communication	3.01	92.1	92.1	92.1	92.1	91.7	0.0	0.0	0.0	0.4
8.1 Postal Services	0.04	226.1	226.1	226.1	226.1	209.9	0.0	0.0	0.0	7.7
8.2 Telephone & Telefax Equipment	0.74	66.6	66.6	66.6	66.6	66.6	0.0	0.0	0.0	0.0
8.3 Telephone & Telefax Services	2.23	98.1	98.1	98.1	98.1	98.0	0.0	0.0	0.0	0.1
9 Recreation & Culture	2.22	142.0	141.9	141.6	139.1	136.3	0.1	0.3	2.1	4.2
9.1 Audio Visual, Photographic & Info. Proce. Equip.	1.09	109.7	109.6	109.6	108.6	106.2	0.1	0.1	1.0	3.3
9.2 Other Recreational Items & Equip.	0.18	171.5	171.0	170.6	169.4	162.6	0.3	0.5	1.2	5.5
9.3 Recreational & Cultural Services	0.76	161.7	161.7	161.4	157.0	156.0	0.0	0.2	3.0	3.7
9.4 Newspapers, Books & Stationery	0.19	218.2	218.0	216.4	211.3	203.2	0.1	0.9	3.3	7.4
10 Education	3.37	159.4	159.4	159.4	159.4	148.4	0.0	0.0	0.0	7.4
10.1 Pre-Primary & Primary Education	1.10	210.4	210.4	210.4	210.4	185.1	0.0	0.0	0.0	13.6
10.2 Secondary & Tertiary Education	2.26	134.5	134.5	134.5	134.5	130.5	0.0	0.0	0.0	3.1
11 Restaurants & Hotels	3.27	227.4	226.7	225.2	221.9	210.8	0.3	1.0	2.4	7.8
11.1 Restaurants, Cafes and the Like	3.08	231.0	230.3	228.8	225.4	213.8	0.3	1.0	2.5	8.0
11.2 Accommodation Services	0.19	167.4	167.4	166.6	164.6	161.6	0.0	0.5	1.7	3.6
12 Miscellaneous Goods & Services	9.57	137.9	137.9	137.7	131.6	129.6	0.0	0.2	4.8	6.4
12.1 Personal Care	0.66	161.5	161.4	160.8	160.2	156.6	0.1	0.4	0.8	3.1
12.2 Personal Effects N.E.C.	0.04	141.6	141.6	140.5	140.2	134.7	0.0	0.8	1.0	5.1
12.3 Social Protection	0.14	189.5	189.5	189.5	189.4	160.5	0.0	0.0	0.0	18.1
12.4 Insurance	6.32	137.3	137.3	137.2	128.4	128.6	0.0	0.0	6.9	6.8
12.5 Financial Services	0.18	151.6	151.2	149.9	147.8	145.8	0.2	1.2	2.6	4.0
12.6 Taxes Licences, Fees	2.24	128.3	128.3	127.7	127.1	121.4	0.0	0.4	0.9	5.6
All-Items Index	100.0	177.0	176.8	175.9	173.1	169.4	0.1	0.7	2.2	4.5

TABLE 3: COST-OF-LIVING INDEX BY TRADABILITY (September 2006 = 100.0)

		All Items		Non-Tradable		Domestic Tradable		Imported Tradable		All Tradable	
		Index	Inflation	Index	Inflation	Index	Inflation	Index	Inflation	Index	Inflation
Weights		100.00		30.92		23.91		45.17		69.08	
2012	Jan	154.3	8.8	141.1	6.2	169.6	7.2	155.3	11.5	160.0	9.9
	Feb	154.7	8.2	141	6.1	170.4	7.3	155.7	10.2	160.6	9.1
	Mar	155.4	8.0	141.4	5.8	172.2	7.6	156.1	9.8	161.4	8.9
	Apr	156.9	7.5	142.4	5.3	176.0	8.5	156.7	8.2	163.2	8.3
	May	159.0	7.7	144.2	6.5	178.0	8.9	158.9	7.7	165.3	8.1
	Jun	159.8	7.3	145.0	5.1	178.7	8.4	159.7	7.8	166.0	8.1
	Jul	160.3	7.3	145.2	5.2	179.0	8.2	160.5	8.0	166.7	8.1
	Aug	160.8	6.6	145.7	4.8	179.3	8.2	161.1	6.7	167.2	7.3
	Sept	162.1	7.1	146.1	4.4	179.9	8.2	163.4	8.0	168.9	8.1
	Oct	162.8	7.1	146.3	4.3	181.6	8.7	164.0	7.8	169.9	8.2
	Nov	164.4	7.4	146.7	4.5	183.7	9.7	165.9	7.8	172.0	8.5
	Dec	164.9	7.4	147.3	4.7	184.5	9.8	166.3	7.5	172.5	8.4
2013	Jan	165.9	7.5	148.4	5.2	185.6	9.5	167.1	7.6	173.4	8.3
	Feb	166.2	7.5	148.5	5.3	186.0	9.2	167.5	7.6	173.8	8.2
	Mar	167.1	7.6	148.8	5.3	188.4	9.4	168.1	7.7	175.0	8.4
	Apr	168.2	7.2	150.1	5.4	190.9	8.4	168.4	7.5	176.0	7.9
	May	168.7	6.1	150.4	4.3	191.4	7.5	168.9	6.3	176.5	6.8
	Jun	169.1	5.8	151.1	4.2	191.1	6.9	169.5	6.2	176.8	6.5
	Jul	169.4	5.7	151.2	4.1	191.1	6.8	170.1	6.0	177.2	6.3
	Aug	169.8	5.6	151.4	4.0	191.4	6.8	170.5	5.8	177.6	6.2
	Sept	170.2	5.0	151.8	3.9	191.9	6.6	171.0	4.7	178.1	5.5
	Oct	170.6	4.8	152.3	4.1	192.1	5.8	171.4	4.5	178.5	5.0
	Nov	171.6	4.1	152.8	4.1	192.9	5.0	171.9	3.6	179.1	4.1
	Dec	171.7	4.1	153.3	4.1	193.3	4.8	172.4	3.7	179.5	4.1
2014	Jan	173.1	4.4	154.9	4.4	196.4	5.8	173.1	3.6	181.0	4.4
	Feb	173.9	4.6	155.1	4.5	198.9	6.9	173.4	3.5	182.1	4.8
	Mar	174.5	4.4	155.9	4.7	199.7	6.0	173.7	3.3	182.5	4.3
	Apr	175.9	4.5	158.7	5.7	200.6	5.1	174.2	3.4	183.2	4.1
	May	176.3	4.5	158.9	5.6	201.2	5.1	174.8	3.5	183.8	4.1
	Jun	176.8	4.6	159.8	5.8	201.5	5.4	175.2	3.4	184.1	4.1
	Jul	177.0	4.5	159.8	5.7	201.7	5.5	175.5	3.2	184.4	4.1
% Change on last month		0.1		0.0		0.1		0.2		0.2	

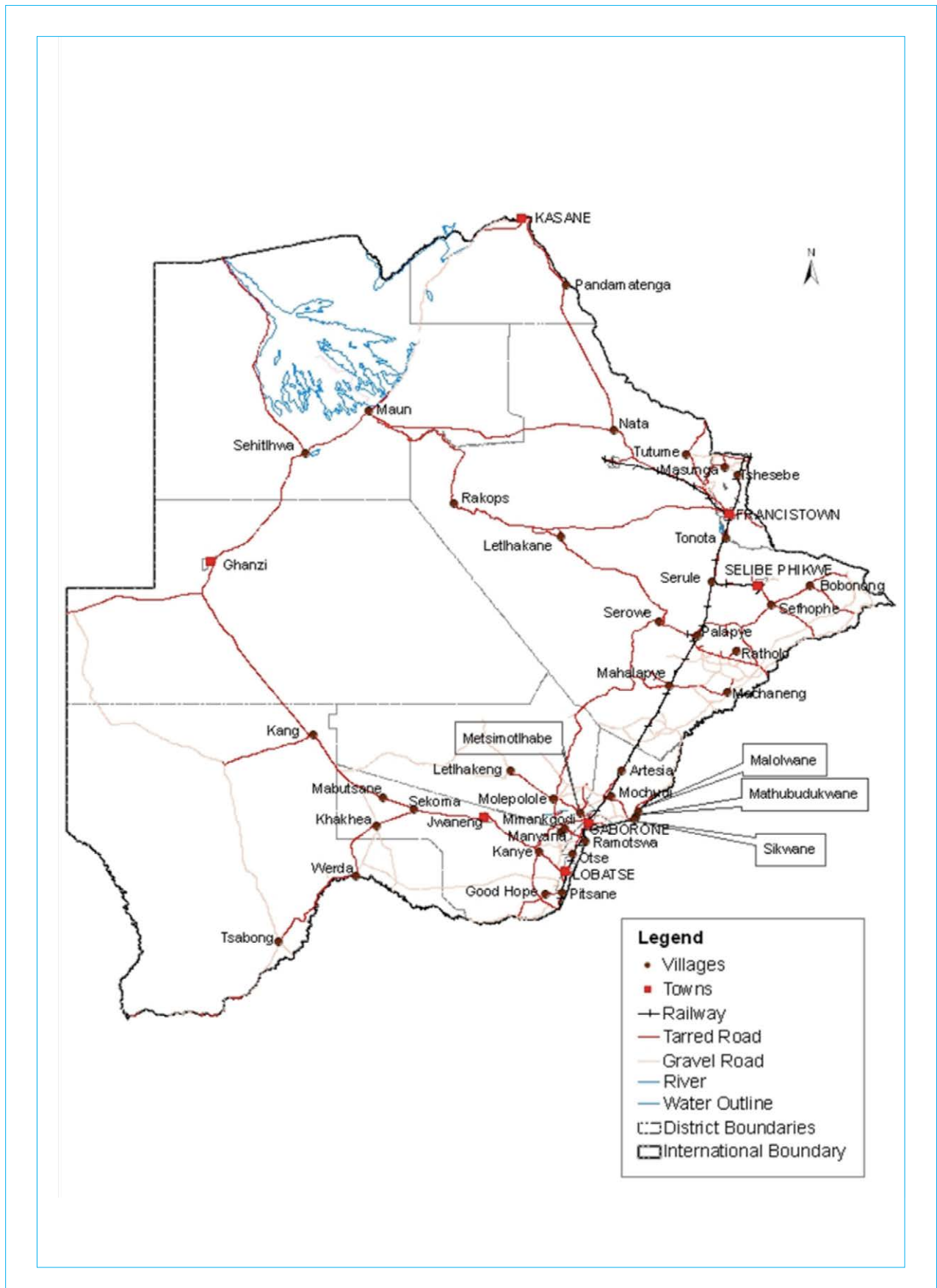
TABLE 4: Core Inflation Rates by Exclusion and Trimmed Mean

Year	Month	Consumer Price Index (Trimmed Mean) (September 2006 = 100)	Core Monthly Inflation Rate (Trimmed Mean) (percentage)	Consumer Price Index (Excluding Administered Prices) (September 2006 = 100)	Core Monthly Inflation (Excluding Administered Prices) (percentage)
2012					
	Jan	157.9	8.1	156.0	7.2
	Feb	158.0	7.8	156.5	7.2
	Mar	159.2	7.6	157.4	7.0
	Apr	158.9	7.3	159.2	6.6
	May	160.7	7.3	160.2	6.5
	Jun	163.9	6.8	161.2	6.4
	Jul	164.5	6.8	161.8	6.5
	Aug	164.0	6.3	162.5	6.6
	Sept	165.6	6.5	163.2	6.5
	Oct	163.7	6.7	164.1	6.6
	Nov	165.0	7.1	165.1	6.9
	Dec	165.7	7.1	165.7	6.8
2013					
	Jan	166.8	7.2	166.8	6.9
	Feb	167.2	7.2	167.2	6.9
	Mar	168.3	7.3	168.4	7.0
	Apr	172.2	6.8	169.4	6.4
	May	166.9	6.0	170.0	6.1
	Jun	168.4	5.7	170.3	5.7
	Jul	168.7	5.5	170.7	5.5
	Aug	169.1	5.4	171.1	5.3
	Sept	169.8	4.7	171.7	5.2
	Oct	171.5	4.7	172.2	4.9
	Nov	176.1	4.0	172.9	4.7
	Dec	174.8	4.0	173.5	4.7
2014					
	Jan	173.9	4.1	175.4	5.2
	Feb	173.4	4.1	176.3	5.5
	Mar	175.1	4.0	177.1	5.2
	Apr	175.0	4.1	178.2	5.2
	May	175.4	4.1	178.8	5.2
	Jun	177.8	4.2	179.4	5.3
	Jul	178.0	4.2	179.7	5.3

Table 5: Average Annual Inflation (September 2006=100)

		YEAR						
Group	Weights	2008	2009	2010	2011	2012	2013	
1	Food & Non-Alcoholic Beverages	21.84	20.2	14.7	3.6	6.9	8.0	5.4
2	Alcoholic Beverages, Tobacco & Narcotics	9.29	13.2	35.2	7.1	8.4	7.6	10.3
3	Clothing and Footwear	7.52	2.0	8.4	8.0	8.9	7.5	6.3
4	Housing, Water, Electr. Gas & Other Fuels	11.46	8.1	4.8	6.4	8.4	7.7	4.3
5	Furnishing, H/H Equipment & Routine Maintenance	6.76	6.0	11.9	9.4	9.0	7.3	4.9
6	Health	2.71	11.3	5.5	2.7	4.5	5.9	5.5
7	Transport	18.98	21.2	(8.4)	12.1	13.2	10.8	7.3
8	Communication	3.01	(0.3)	(0.3)	1.2	(3.0)	(1.4)	0.3
9	Recreation & Culture	2.22	2.3	5.0	6.0	8.3	5.8	4.5
10	Education	3.37	3.9	3.9	5.8	10.6	6.4	4.7
11	Restaurants & Hotels	3.27	12.7	18.8	9.0	9.3	8.4	7.9
12	Miscellaneous Goods & Services	9.57	4.9	3.8	7.0	5.3	2.0	1.2
	All-Items Index	100.0	12.6	8.2	6.9	8.5	7.5	5.9

PRICES COLLECTION COVERAGE FOR BOTSWANA CONSUMER PRICE INDEX (CPI)- 2014



Glossary

Consumer Price Index (CPI) is an index which measures price changes in goods and services with reference to a base period.

Inflation is a measurement of prices movement of goods and services in a particular country.

Domestic Tradable refers to the goods and services which a country (Botswana) can export to other countries.

Imported Tradable represents the goods and services which a country (Botswana) imports from other countries (trading partners).

Non-Tradable refers to the goods and services which a country cannot either export or import to other countries.

All –Tradable refers to the total of **Domestic** and **Imported tradable**.

Trimmed Mean Core Inflation- attempts to remove 8 percent (by weight) of the commodity sub-groups with the largest price changes at each of the ends of an ordered series of price changes in any given month.

Core inflation by Exclusion is a measure used to remove the volatility inherent in prices that are only adjusted periodically and not always in response to currently prevailing market forces.