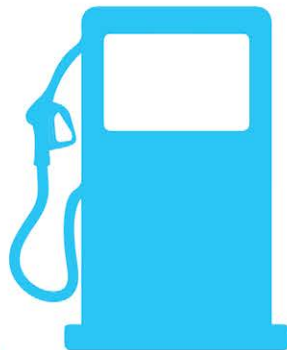


STATISTICS BOTSWANA

CONSUMER PRICE INDEX

AUGUST 2015



Copyrights © Statistics Botswana 2015

Contact Statistician:
Phaladi Labobedi

Tel: (267) 3671300
Fax: (267) 3952201

Statistics Botswana. Private Bag 0024 Botswana
Tel: (267) 367 1300. **Fax:** (267) 395 2201. **Email:** info@statsbots.bw **Website:** www.cso.gov.bw

CONTENTS

COMMENTARY

Section 1: **Headline Inflation**

Section 2: **Core Inflation**

CHARTS

1. **National Rates of Inflation, February 2013 – August 2015**
2. **Monthly Changes in the Cost-of-Living Index, February 2013 – August 2015**
3. **Non-Tradable Inflation Rates, February 2013 – August 2015**
4. **Tradable Inflation Rates, February 2013 - August 2015**

TABLES

1. **Cost-of-Living Index Series (January 2013 – August 2015)**
2. **National Cost-of-Living Group and Section Indices**
3. **Cost-of-Living Index by Tradability (January 2013 – August 2015)**
4. **Core Inflation Rates**
5. **Annual Average Inflation Rates 2008-2014**

GLOSSARY

Section 1: **Headline Inflation**

The annual inflation rate in August 2015 was 3.0 percent, a decrease of 0.1 of a percentage point on the July 2015 rate of 3.1 percent. Annual inflation in August 2015 was lower than the 4.6 percent recorded during the same month in 2014. The decline in the annual inflation rate between August 2014 and August 2015 was due to the decrease in prices of major commodities in the Transport group, especially fuel which was adjusted downward in December 2014 and February 2015. The inflation rates for regions between July 2015 and August 2015 indicated that Cities & Towns went down to 2.8 percent from 3.1 percent, Rural Villages' dropped to 3.4 percent from 3.5 percent and Urban Villages' remained unchanged at 3.0 percent.

The August national Consumer Price Index registered an increase of 0.2 percent, moving from 182.5 in July to 182.8 in August. The Urban Villages' index realized an increase of 0.3 percent, moving from 181.1 to 181.6. The Rural Villages' index went up by 0.3 percent, from 188.5 to 188.9, while the Cities & Towns' index rose by 0.1 percent, moving from 181.1 to 181.3 between the two months.

Group indices were generally stable between July 2015 and August 2015, recording changes of less than 1.0 percent.

The *Clothing and Footwear* index group went up from 174.0 to 175.4, registering an increase of 0.8 percent between July and August. The increase was attributed to the general rise in the section indices.

The Restaurants & Hotels index group rose by 0.4 percent, moving from 239.6 in July to 240.4 in August. The rise was due to the general increase in the section indices.

The *Food & Non-Alcoholic Beverages* index group went up from 196.8 to 197.1, recording an increase of 0.2 percent between July and August. The rise was attributed to the general increase in the section indices.

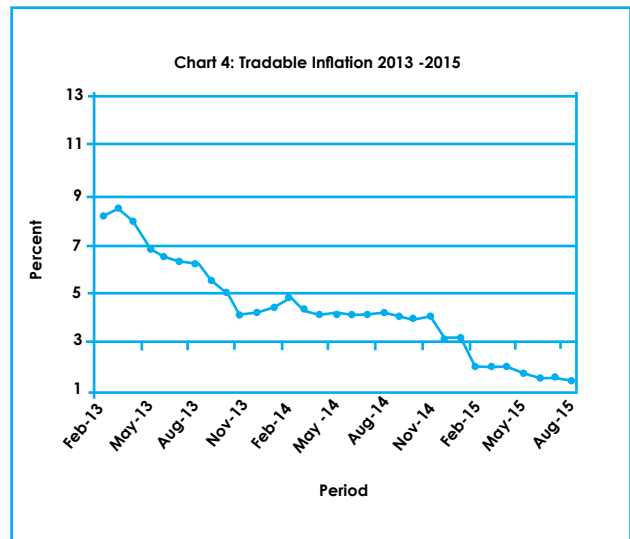
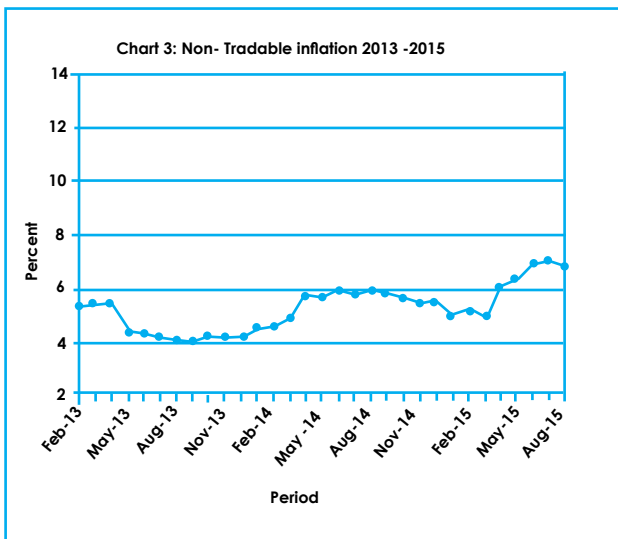
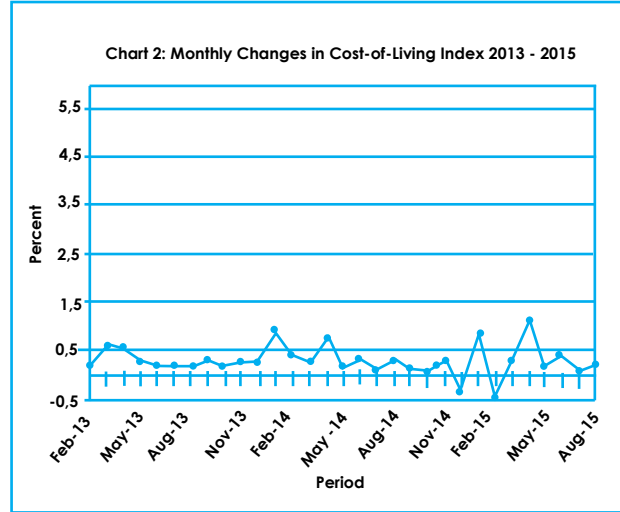
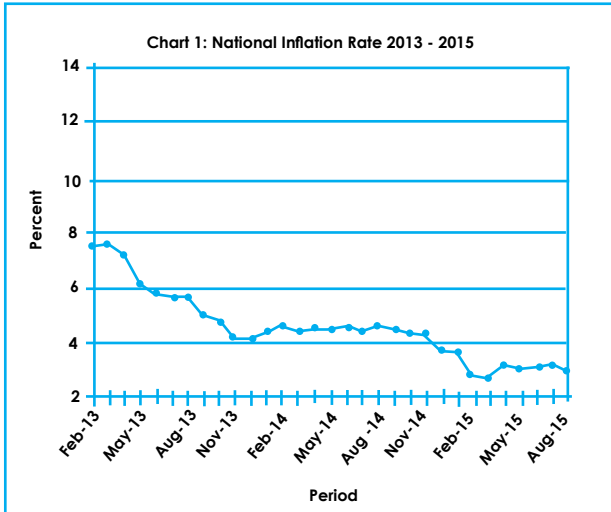
The *All-Tradable* inflation rate was 1.4 percent in August, a decline of 0.1 of a percentage point on the July 2015 rate of 1.5 percent. The *Imported Tradable* inflation rate recorded a drop of 0.1 of a percentage point, from 0.7 percent in July to 0.6 percent in August. The *Non-Tradable* inflation rate declined from 6.9 percent to 6.8 percent between July and August. The *Domestic Tradable* inflation rate remained the same at 2.9 percent between July and August 2015.

The *All-Tradable index* moved from 187.3 in July to 187.7 in August registering a rise of 0.2 percent. The *Imported Tradable index* moved from 176.8 to 177.3 recording an increase of 0.3 percent between the two months. The *Non-Tradable index* registered an upturn of 0.1 percent, moving from 170.9 to 171.0, while the *Domestic Tradable index* went up by 0.1 percent, moving from 207.5 in July to 207.7 in August.

Section 2: **Core Inflation**

The Trimmed Mean Core Inflation rate registered a decline of 0.1 of a percentage point, moving from 3.6 percent to 3.5 percent. The Core Inflation rate by exclusion registered a drop of 0.1 of a percentage point, moving from 4.7 percent to 4.6 percent, between July 2015 and August 2015.

Charts



D. Buthali
Deputy Statistician General
15th September 2015

TABLES

TABLE 1: COST OF LIVING INDEX (September 2006 =100.0)

		Food	Alcohol & Tobacco	Clothing & Footwear	Housing	Furniture etc	Health	Transport	Com- munica- tion	Rec. & Culture	Edu- cation	Rest. & Ho- tels	Miscel- laneous
Weights		21.84	9.29	7.52	11.46	6.76	2.71	18.98	3.01	2.22	3.37	3.27	9.57
2013	Jan	185.2	216.9	148.0	148.8	164.0	146.8	170.0	91.7	132.6	148.4	204.6	129.2
	Feb	186.0	217.2	148.6	148.9	164.5	147.2	170.1	91.7	132.8	148.4	204.9	129.2
	Mar	187.1	222.1	149.1	149.5	165.2	147.4	170.4	91.7	133.0	148.4	205.6	129.3
	Apr	187.7	226.1	150.4	152.2	165.8	147.6	170.5	91.7	135.9	148.4	208.2	129.0
	May	188.3	226.7	151.5	152.2	166.3	147.8	170.7	91.7	136.0	148.4	210.1	129.3
	Jun	188.6	226.9	152.3	153.4	167.4	148.4	170.7	91.7	136.1	148.4	210.6	129.3
	Jul	188.8	227.2	152.9	153.5	167.9	148.7	171.2	91.7	136.3	148.4	210.8	129.6
	Aug	189.5	227.5	153.3	153.7	168.2	149.0	171.4	91.7	136.5	148.4	213.0	129.7
	Sept	190.2	228.0	153.8	154.5	169.1	149.1	171.4	92.0	137.1	148.4	213.8	129.8
	Oct	190.7	228.2	154.3	154.7	169.5	150.2	171.5	92.0	137.4	148.4	214.5	130.8
	Nov	191.2	229.2	155.3	154.8	170.8	150.4	172.1	92.0	138.4	148.4	215.8	131.0
	Dec	191.4	231.0	155.9	155.2	171.5	150.7	172.2	92.1	138.6	148.4	218.5	131.1
2014	Jan	191.9	234.8	156.9	155.4	171.8	157.4	173.2	92.1	139.1	159.4	221.9	131.6
	Feb	192.6	239.9	157.7	155.5	171.9	157.6	173.3	92.1	139.3	159.4	223.1	131.6
	Mar	193.1	243.3	158.5	156.5	173.8	157.8	172.2	92.1	139.6	159.4	224.2	131.7
	Apr	193.8	245.9	159.1	158.4	174.0	158.8	172.3	92.1	141.6	159.4	225.2	137.7
	May	194.3	247.5	160.0	158.5	174.4	159.0	172.3	92.1	141.8	159.4	226.2	137.8
	Jun	194.6	247.8	161.1	159.2	176.1	162.4	172.3	92.1	141.9	159.4	226.7	137.9
	Jul	194.9	248.1	161.9	159.2	176.3	162.5	172.5	92.1	142.0	159.4	227.4	137.9
	Aug	195.0	248.2	162.3	159.3	177.0	162.8	174.1	92.1	142.3	159.4	228.5	138.1
	Sept	195.3	248.3	163.1	159.7	178.1	163.1	174.2	92.1	142.7	159.4	229.0	138.2
	Oct	195.5	248.6	163.9	159.8	178.4	163.1	174.3	92.1	142.7	159.4	229.4	138.2
	Nov	196.0	248.7	165.0	159.9	179.1	163.4	175.2	92.1	143.1	159.4	229.9	138.9
	Dec	196.3	248.6	166.1	161.4	180.0	163.5	170.7	92.1	143.5	159.4	230.3	138.9
2015	Jan	196.3	254.2	167.2	161.5	182.0	167.6	171.2	92.1	143.5	169.5	232.0	139.2
	Feb	196.7	256.7	169.2	161.3	183.5	167.7	163.8	92.1	143.9	169.5	235.7	139.5
	Mar	196.7	259.4	170.4	162.3	184.7	167.8	164.0	92.1	144.1	169.5	236.8	139.6
	Apr	196.7	260.6	171.1	168.3	185.1	167.9	164.3	92.1	150.9	169.5	237.1	148.0
	May	196.8	261.3	172.1	168.1	185.6	171.9	164.3	92.6	151.3	169.5	237.7	148.0
	Jun	196.6	261.7	173.3	171.0	186.9	172.2	164.4	92.5	151.3	169.5	239.2	148.7
	Jul	196.8	262.1	174.0	171.1	187.1	172.6	164.6	92.5	151.5	169.5	239.6	148.7
	Aug	197.1	262.6	175.4	171.2	187.6	172.7	164.6	92.5	151.5	169.8	240.4	148.9
% Change on last month		0.2	0.2	0.8	0.1	0.3	0.0	0.0	(0.0)	0.0	0.2	0.4	0.1

TABLE 1: COST OF LIVING INDEX(Cont.)

		All Items Index	National Inflation Rate	Monthly Change	Towns & Cities Index	Urban Villages Index	Rural Villages Index	Towns & Cities	Urban Villages	Rural Villages
		100	%	%	47.33	33.76	18.91	%	%	%
2013	Jan	165.9	7.5	0.6	165.0	164.8	170	7.5	7.0	8.3
	Feb	166.2	7.5	0.2	165.2	165.0	170.7	7.5	6.9	8.3
	Mar	167.1	7.6	0.6	166.0	166.2	171.8	7.5	7.2	8.3
	Apr	168.2	7.2	0.6	167.3	167.4	172.1	7.3	6.9	7.7
	May	168.7	6.1	0.3	168.0	167.5	172.5	5.9	5.9	6.9
	Jun	169.1	5.8	0.2	168.1	168.1	173.3	5.5	5.8	6.6
	Jul	169.4	5.7	0.2	168.5	168.3	173.5	5.5	5.5	6.4
	Aug	169.8	5.6	0.2	168.8	168.7	174.0	5.5	5.3	6.4
	Sept	170.2	5.0	0.3	169.1	169.2	174.7	4.5	5.0	6.4
	Oct	170.6	4.8	0.2	169.4	169.6	175.4	4.2	4.9	6.1
	Nov	171.2	4.1	0.3	169.9	170.0	176.4	3.5	4.3	5.5
	Dec	171.7	4.1	0.3	170.2	170.5	177.3	3.6	4.0	5.3
2014	Jan	173.1	4.4	0.9	171.7	172.2	178.6	4.0	4.5	5.0
	Feb	173.9	4.6	0.4	172.6	172.7	179.4	4.5	4.7	5.1
	Mar	174.5	4.4	0.3	173.2	173.4	179.6	4.4	4.3	4.6
	Apr	175.9	4.5	0.8	174.7	174.5	181.2	4.4	4.3	5.3
	May	176.3	4.5	0.2	174.9	175.2	181.5	4.2	4.6	5.2
	Jun	176.8	4.6	0.3	175.5	175.6	182.1	4.4	4.5	5.1
	Jul	177.0	4.5	0.1	175.8	175.9	182.1	4.3	4.5	5.0
	Aug	177.5	4.6	0.3	176.3	176.3	182.7	4.5	4.5	5.0
	Sept	177.8	4.5	0.2	176.4	176.6	183.5	4.3	4.4	5.0
	Oct	178.0	4.3	0.1	176.6	176.7	183.8	4.2	4.2	4.8
	Nov	178.5	4.3	0.3	177.2	177.2	184.3	4.3	4.3	4.5
	Dec	178.1	3.8	(0.3)	176.7	177.0	183.7	3.8	3.8	3.6
2015	Jan	179.5	3.6	0.8	177.9	178.5	185.3	3.6	3.7	3.7
	Feb	178.8	2.8	(0.4)	177.1	177.7	185.1	2.6	2.9	3.2
	Mar	179.4	2.8	0.4	177.5	178.3	186.0	2.5	2.8	3.6
	Apr	181.3	3.1	1.1	180.0	179.7	187.4	3.1	3.0	3.4
	May	181.6	3.0	0.2	180.2	180.1	188.1	3.0	2.8	3.6
	Jun	182.3	3.1	0.4	180.9	180.8	188.2	3.1	3.0	3.4
	Jul	182.5	3.1	0.1	181.1	181.1	188.5	3.1	3.0	3.5
	Aug	182.8	3.0	0.2	181.3	181.6	188.9	2.8	3.0	3.4
% Change on last month		0.2			0.1	0.3	0.3			

TABLE 2 :National Cost-of-Living Group and Section Indices

(September 2006=100.0)

Group Section	Weights	This month August 2015	Last month July 2015	3 months ago May 2014	6 months ago Feb 2014	12 months ago August 2014	Percentage Change on			
							Last month	3 months ago	6 months ago	12 months ago
1 Food & Non-Alcoholic Beverages	21.84	197.1	196.8	196.8	196.7	195.0	0.2	0.2	0.2	1.1
1.1 Bread & Cereals	6.51	187.3	186.9	186.7	188.3	188.2	0.2	0.3	(0.5)	(0.5)
1.2 Meat (Fresh, Chilled & Frozen)	3.15	206.0	205.9	205.5	204.6	201.8	0.0	0.2	0.7	2.1
1.3 Fish (Fresh, Chilled & Frozen)	0.20	213.0	212.5	208.1	205.3	197.9	0.2	2.4	3.8	7.6
1.4 Milk, Cheese & Milk Products	2.19	203.0	202.9	202.3	203.5	196.2	0.1	0.4	(0.2)	3.5
1.5 Oils & Fats	0.90	228.9	228.9	230.5	231.7	234.6	0.0	(0.7)	(1.2)	(2.4)
1.6 Fruit	0.67	144.4	144.3	151.2	150.4	143.3	0.1	(4.5)	(4.0)	0.7
1.7 Vegetables	1.94	199.1	198.5	202.3	202.8	204.1	0.3	(1.6)	(1.8)	(2.4)
1.8 Sugar, Jam, Honey, Chocolate & Confectionery	1.36	207.3	207.1	204.4	200.9	200.4	0.1	1.4	3.2	3.4
1.9 Food not else where Classified	2.36	200.7	200.2	198.3	195.7	193.3	0.2	1.2	2.6	3.8
1.10 Coffee, Tea & Cocoa	0.63	222.2	220.4	220.3	220.3	216.8	0.8	0.9	0.8	2.5
1.11 Mineral Waters, Soft Drinks, Fruits & Veg. Juices	1.94	189.7	189.5	189.3	188.3	187.4	0.1	0.2	0.7	1.2
2 Alcoholic Beverages, Tobacco & Narcotics	9.29	262.6	262.1	261.3	256.7	248.2	0.2	0.5	2.3	5.8
2.1 Alcoholic Beverages	8.09	258.5	258.2	257.9	254.3	245.3	0.1	0.2	1.6	5.4
2.2 Tobacco	1.20	290.3	288.7	284.6	272.5	268.1	0.6	2.0	6.5	8.3
3 Clothing and Footwear	7.52	175.4	174.0	172.1	169.2	162.3	0.8	1.9	3.7	8.0
3.1 Clothing	3.33	204.6	202.4	199.8	196.4	186.4	1.0	2.4	4.2	9.8
3.2 Other articles of Clothing	1.82	154.4	153.5	152.6	150.1	145.7	0.5	1.1	2.9	5.9
3.3 Cleaning, Repair & Hire	0.03	211.1	207.7	204.1	203.2	202.6	1.6	3.4	3.9	4.2
3.4 Footwear	2.34	149.7	149.1	147.4	144.8	140.4	0.4	1.6	3.3	6.6
4 Housing, Water, Electr. Gas & Other Fuels	11.46	171.2	171.1	168.1	161.3	159.3	0.1	1.8	6.1	7.5
4.1 Rent paid by Tenants	5.68	150.0	150.0	143.7	141.7	137.8	0.0	4.4	5.9	8.9
4.2 Materials for Maintenance & Repair of dwellings	2.57	153.5	153.3	153.9	153.3	151.9	0.1	(0.3)	0.1	1.0
4.3 Water Supply & Misc. Services	1.14	202.8	202.8	202.8	160.9	160.9	0.0	0.0	26.0	26.0
4.4 Electricity Gas and other Fuels	2.06	234.4	233.9	234.1	225.6	226.9	0.2	0.1	3.9	3.3
5 Furnishing, H/H Equipment & Routine Maintenance	6.76	187.6	187.1	185.6	183.5	177.0	0.3	1.1	2.2	6.0
5.1 Furniture & Furnishing	2.31	166.8	165.9	165.4	164.0	151.0	0.6	0.9	1.7	10.5
5.2 Carpets & Other Floor Coverings	0.04	173.0	172.6	171.6	170.8	163.1	0.2	0.8	1.2	6.0
5.3 Household Textiles	0.44	172.5	171.5	170.3	168.7	164.5	0.6	1.3	2.3	4.8
5.4 Household Appliances	0.69	159.7	159.2	158.6	155.3	151.6	0.3	0.7	2.8	5.4
5.5 Glassware, Tableware & Household Utensils	0.44	192.6	191.7	191.4	190.2	186.4	0.5	0.6	1.2	3.3
5.6 Small Tools, Miscellaneous Accessories	0.06	184.4	185.4	184.5	183.4	180.6	(0.5)	(0.0)	0.6	2.1
5.7 Goods & Services for H/hold Maintenance	2.79	213.6	213.4	210.6	208.1	205.3	0.1	1.4	2.6	4.0

TABLE 2 :National Cost-of-Living Group and Section Indices (September 2006=100.0) cont...

Group Section	Weights	This month August 2015	Last month July 2015	3 months ago May 2014	6 months ago Feb 2014	12 months ago August 2014	Percentage Change on			
							Last month	3 months ago	6 months ago	12 months ago
6 Health	2.71	172.7	172.6	171.9	167.7	162.8	0.0	0.5	3.0	6.1
6.1 Medical Products, App. & Equip.	0.35	217.0	216.2	214.4	211.8	204.7	0.4	1.2	2.4	6.0
6.2 Out-patient Services	0.66	186.1	186.1	185.3	184.9	168.3	(0.0)	0.4	0.6	10.5
6.3 Hospital Services	1.71	158.5	158.5	158.1	152.1	152.1	0.0	0.3	4.2	4.2
7 Transport	18.98	164.6	164.6	164.3	163.8	174.1	0.0	0.2	0.5	(5.5)
7.1 Purchase of Vehicles	5.89	159.3	159.3	159.2	158.7	156.1	0.0	0.1	0.4	2.1
7.2 Operation of Personal Transport	10.92	164.9	164.8	164.3	163.8	183.1	0.0	0.3	0.7	(10.0)
7.3 Transport Services	2.17	177.8	177.8	177.8	177.8	177.8	0.0	0.0	0.0	0.0
8 Communication	3.01	92.5	92.5	92.6	92.1	92.1	(0.0)	(0.1)	0.5	0.5
8.1 Postal Services	0.04	261.2	261.2	261.2	226.1	226.1	0.0	0.0	15.5	15.5
8.2 Telephone & Telefax Equipment	0.74	66.6	66.6	66.6	66.6	66.6	0.0	0.0	0.0	0.0
8.3 Telephone & Telefax Services	2.23	98.1	98.1	98.2	98.2	98.1	(0.0)	(0.1)	(0.1)	(0.0)
9 Recreation & Culture	2.22	151.5	151.5	151.3	143.9	142.3	0.0	0.2	5.3	6.5
9.1 Audio Visual, Photographic & Info. Proce. Equip.	1.09	114.6	114.5	114.1	112.0	110.1	0.0	0.4	2.3	4.1
9.2 Other Recreational Items & Equip.	0.18	176.4	176.1	176.7	174.3	171.5	0.2	(0.2)	1.2	2.8
9.3 Recreational & Cultural Services	0.76	178.1	178.2	178.2	161.9	161.7	(0.0)	(0.1)	10.0	10.1
9.4 Newspapers, Books & Stationary	0.19	230.5	230.4	229.6	223.3	219.2	0.1	0.4	3.2	5.2
10 Education	3.37	169.8	169.5	169.5	169.5	159.4	0.2	0.2	0.2	6.6
10.1 Pre-Primary & Primary Education	1.10	226.7	225.7	225.7	225.7	210.4	0.4	0.5	0.5	7.8
10.2 Secondary & Tertiary Education	2.26	142.1	142.1	142.1	142.1	134.5	0.0	0.0	0.0	5.6
11 Restaurants & Hotels	3.27	240.4	239.6	237.7	235.7	228.5	0.4	1.1	2.0	5.2
11.1 Restaurants, Cafes and the Like	3.08	244.4	243.5	241.7	239.7	232.3	0.4	1.1	2.0	5.2
11.2 Accommodation Services	0.19	174.8	174.3	172.7	170.6	167.4	0.3	1.2	2.4	4.4
12 Miscellaneous Goods & Services	9.57	148.9	148.7	148.0	139.5	138.1	0.1	0.6	6.8	7.9
12.1 Personal Care	0.66	165.8	165.3	165.1	164.1	161.3	0.3	0.4	1.0	2.8
12.2 Personal Effects N.E.C.	0.04	151.1	150.8	149.7	148.4	143.6	0.2	1.0	1.9	5.2
12.3 Social Protection	0.14	214.9	214.9	210.5	207.6	189.5	0.0	2.1	3.5	13.4
12.4 Insurance	6.32	151.0	150.9	150.9	138.2	137.3	0.1	0.1	9.3	10.0
12.5 Financial Services	0.18	157.3	156.4	155.7	154.3	151.8	0.5	1.0	1.9	3.6
12.6 Taxes Licences, Fees	2.24	133.3	133.0	130.3	130.2	129.2	0.2	2.2	2.4	3.2
All-Items Index	100.0	182.8	182.5	181.6	178.8	177.5	0.2	0.7	2.3	3.0

TABLE 3: COST-OF-LIVING INDEX BY TRADABILITY (September 2006 = 100.0)

		All Items		Non-Tradable		Domestic Tradable		Imported Tradable		All Tradable	
		Index	Inflation	Index	Inflation	Index	Inflation	Index	Inflation	Index	Inflation
Weights		100.00		30.92		23.91		45.17		69.08	
2013	Jan	165.9	7.5	148.4	5.2	185.6	9.5	167.1	7.6	173.4	8.3
	Feb	166.2	7.5	148.5	5.3	186.0	9.2	167.5	7.6	173.8	8.2
	Mar	167.1	7.6	148.8	5.3	188.4	9.4	168.1	7.7	175.0	8.4
	Apr	168.2	7.2	150.1	5.4	190.9	8.4	168.4	7.5	176.0	7.9
	May	168.7	6.1	150.4	4.3	191.4	7.5	168.9	6.3	176.5	6.8
	Jun	169.1	5.8	151.1	4.2	191.1	6.9	169.5	6.2	176.8	6.5
	Jul	169.4	5.7	151.2	4.1	191.1	6.8	170.1	6.0	177.2	6.3
	Aug	169.8	5.6	151.4	4.0	191.4	6.8	170.5	5.8	177.6	6.2
	Sept	170.2	5.0	151.8	3.9	191.9	6.6	171.0	4.7	178.1	5.5
	Oct	170.6	4.8	152.3	4.1	192.1	5.8	171.4	4.5	178.5	5.0
	Nov	171.6	4.1	152.8	4.1	192.9	5.0	171.9	3.6	179.1	4.1
	Dec	171.7	4.1	153.3	4.1	193.3	4.8	172.4	3.7	179.5	4.1
2014	Jan	173.1	4.4	154.9	4.4	196.4	5.8	173.1	3.6	181.0	4.4
	Feb	173.9	4.6	155.1	4.5	198.9	6.9	173.4	3.5	182.1	4.8
	Mar	174.5	4.4	155.9	4.7	199.7	6.0	173.7	3.3	182.5	4.3
	Apr	175.9	4.5	158.7	5.7	200.6	5.1	174.2	3.4	183.2	4.1
	May	176.3	4.5	158.9	5.6	201.2	5.1	174.8	3.5	183.8	4.1
	Jun	176.8	4.6	159.8	5.8	201.5	5.4	175.2	3.4	184.1	4.1
	Jul	177.0	4.5	159.8	5.7	201.7	5.5	175.5	3.2	184.4	4.1
	Aug	177.5	4.6	160.1	5.8	201.8	5.4	176.3	3.4	185.0	4.1
	Sept	177.8	4.5	160.6	5.8	201.6	5.1	176.7	3.3	185.3	4.0
	Oct	178.0	4.3	160.6	5.5	201.7	5.0	177.0	3.3	185.5	3.9
	Nov	178.5	4.3	160.9	5.3	201.7	4.6	178.0	3.5	186.2	4.0
	Dec	178.1	3.8	161.6	5.4	201.7	4.3	176.6	2.4	185.2	3.1
2015	Jan	179.5	3.6	162.5	4.9	204.7	4.2	177.4	2.5	186.7	3.1
	Feb	178.8	2.8	163.0	5.1	205.6	3.4	175.0	0.9	185.4	1.9
	Mar	179.4	2.8	163.6	4.9	206.9	3.6	175.3	1.0	186.1	1.9
	Apr	181.3	3.1	168.4	6.1	207.6	3.5	175.9	0.9	186.7	1.9
	May	181.6	3.0	168.9	6.3	207.7	3.2	176.1	0.8	186.9	1.7
	Jun	182.3	3.1	170.7	6.9	207.6	3.0	176.3	0.6	187.0	1.5
	Jul	182.5	3.1	170.9	6.9	207.5	2.9	176.8	0.7	187.3	1.5
	Aug	182.8	3.0	171.0	6.8	207.7	2.9	177.3	0.6	187.7	1.4
% Change on last month		0.2		0.1		0.1		0.3		0.2	

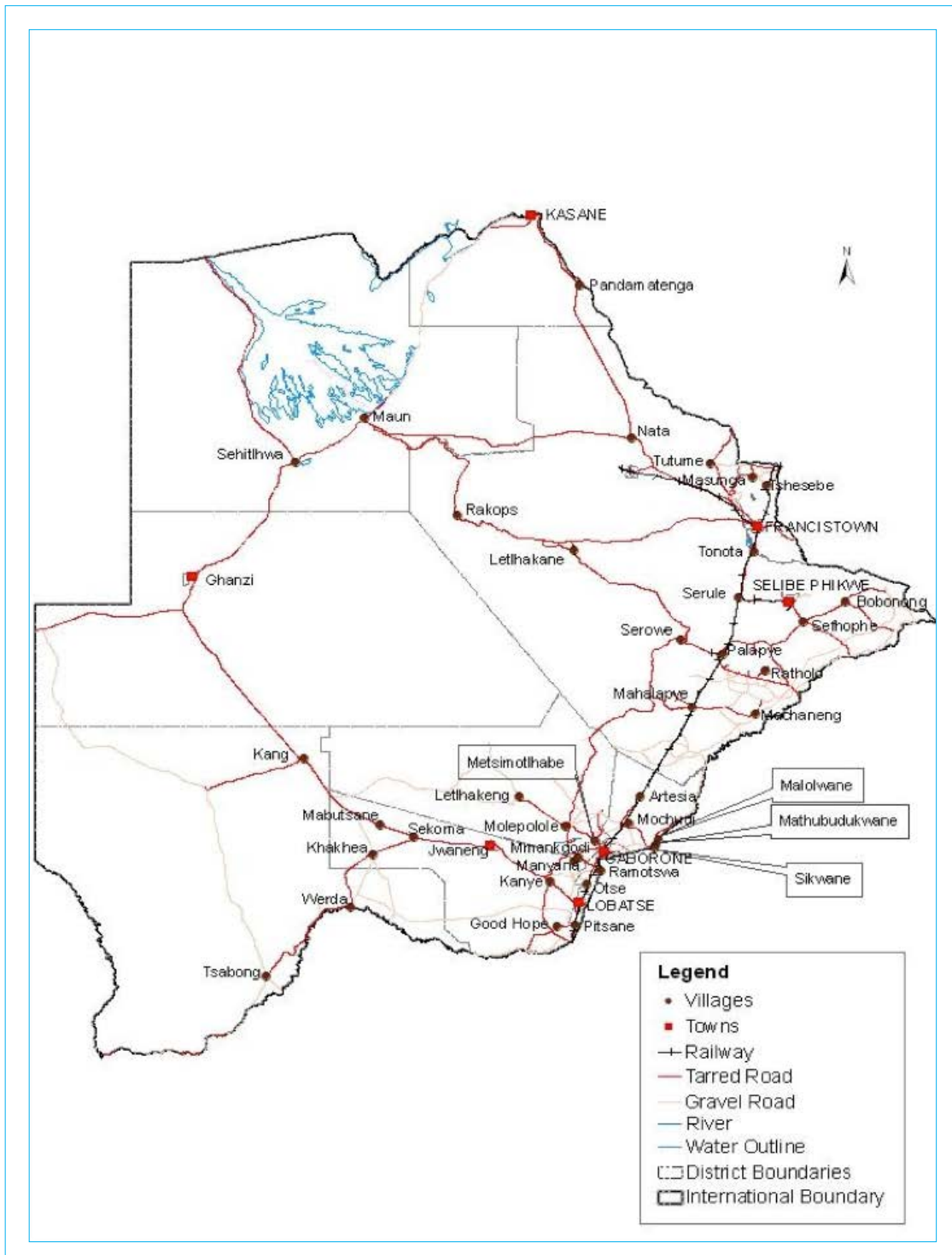
TABLE 4: Core Inflation Rates by Exclusion and Trimmed Mean

Year	Month	Consumer Price Index (Trimmed Mean) (September 2006 = 100)	Core Monthly Inflation Rate (Trimmed Mean) (percentage)	Consumer Price Index (Excluding Administered Prices) (September 2006 = 100)	Core Monthly Inflation (Excluding Administered Prices) (percentage)
2013					
	Jan	166.8	7.2	166.8	6.9
	Feb	167.2	7.2	167.2	6.9
	Mar	168.3	7.3	168.4	7.0
	Apr	172.2	6.8	169.4	6.4
	May	166.9	6.0	170.0	6.1
	Jun	168.4	5.7	170.3	5.7
	Jul	168.7	5.5	170.7	5.5
	Aug	169.1	5.4	171.1	5.3
	Sept	169.8	4.7	171.7	5.2
	Oct	171.5	4.7	172.2	4.9
	Nov	176.1	4.0	172.9	4.7
	Dec	174.8	4.0	173.5	4.7
2014					
	Jan	173.9	4.1	175.4	5.2
	Feb	173.4	4.1	176.3	5.5
	Mar	175.1	4.0	177.1	5.2
	Apr	175.0	4.1	178.2	5.2
	May	175.4	4.1	178.8	5.2
	Jun	177.8	4.2	179.4	5.3
	Jul	178.0	4.2	179.7	5.3
	Aug	177.6	4.2	180.3	5.3
	Sept	177.8	4.1	180.7	5.2
	Oct	179.0	4.0	180.9	5.1
	Nov	179.6	3.9	181.5	5.0
	Dec	176.6	3.7	182.0	4.9
2015					
	Jan	178.5	3.6	183.7	4.8
	Feb	178.6	3.2	184.8	4.8
	Mar	179.2	3.3	185.6	4.8
	Apr	184.1	3.6	186.7	4.8
	May	184.4	3.5	187.1	4.7
	Jun	185.1	3.6	187.9	4.7
	Jul	185.4	3.6	188.2	4.7
	Aug	185.8	3.5	188.6	4.6

Table 5: Average Annual Inflation (September 2006=100)

		YEAR							
Group	Weights	2008	2009	2010	2011	2012	2013	2014	
1	Food & Non-Alcoholic Beverages	21.84	20.2	14.7	3.6	6.9	8.0	5.4	3.0
2	Alcoholic Beverages,Tobacco & Narcotics	9.29	13.2	35.2	7.1	8.4	7.6	10.3	9.0
3	Clothing and Footwear	7.52	2.0	8.4	8.0	8.9	7.5	6.3	6.0
4	Housing, Water, Electr. Gas & Other Fuels	11.46	8.1	4.8	6.4	8.4	7.7	4.3	3.9
5	Furnishing, H/H Equipment& Routine Maintenance	6.76	6.0	11.9	9.4	9.0	7.3	4.9	5.0
6	Health	2.71	11.3	5.5	2.7	4.5	5.9	5.5	8.3
7	Transport	18.98	21.2	(8.4)	12.1	13.2	10.8	7.3	1.2
8	Communication	3.01	(0.3)	(0.3)	1.2	(3.0)	(1.4)	0.3	0.3
9	Recreation & Culture	2.22	2.3	5.0	6.0	8.3	5.8	4.5	4.2
10	Education	3.37	3.9	3.9	5.8	10.6	6.4	4.7	7.4
11	Restaurants & Hotels	3.27	12.7	18.8	9.0	9.3	8.4	7.9	7.6
12	Miscellaneous Goods & Services	9.57	4.9	3.8	7.0	5.3	2.0	1.2	5.2
	All-Items Index	100.0	12.6	8.2	6.9	8.5	7.5	5.9	4.4

PRICES COLLECTION COVERAGE FOR BOTSWANA CONSUMER PRICE INDEX (CPI)- 2015



Glossary

Consumer Price Index (CPI) is an index which measures price changes in goods and services with reference to a base period.

Inflation is a measurement of prices movement of goods and services in a particular country.

Domestic Tradable refers to the goods and services which a country (Botswana) can export to other countries.

Imported Tradable represents the goods and services which a country (Botswana) imports from other countries (trading partners).

Non-Tradable refers to the goods and services which a country cannot either export or import to other countries.

All –Tradable refers to the total of **Domestic** and **Imported tradable**.

Trimmed Mean Core Inflation- attempts to remove 8 percent (by weight) of the commodity sub-groups with the largest price changes at each of the ends of an ordered series of price changes in any given month.

Core inflation by Exclusion is a measure used to remove the volatility inherent in prices that are only adjusted periodically and not always in response to currently prevailing market forces.