

Publication Catalogue January to December 2022

Transport & Infrastructure
Statistics Report 2017



Transport &
Infrastructure
Statistics Q1-Q4
2017

Private Bag 0024, Gaborone
Tel: 3671300 Fax: 3952201
Toll Free: 0800 600 200

Private Bag F193, Francistown
Tel. 241 5848, Fax. 241 7540

Private Bag 32, Ghanzi
Tel: 371 5723 Fax: 659 7506

Private Bag 47, Maun
Tel: 371 5716 Fax: 686 4327

E-mail: info@statsbots.org.bw Website: <http://www.statsbots.org.bw>



STATISTICS BOTSWANA

**Publication Catalogue
January to December 2022**

Preface

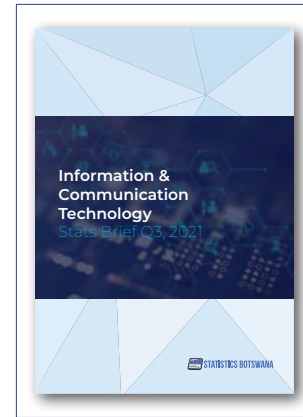
The 2022 publication catalogue provides information on Publications released by Statistics Botswana (SB) from January to December 2022. All these publications are available on the SB website and SB Information Resource Centre Portal which is accessible to the public.



Information & Communication Technology Stats Brief Quarter 3, 2021

Periodicity: Quarterly
Pages: 15
Published: January 2022

The contribution of the ICT sector to the economy stood at 2.7 percent of total GDP at current prices in Q3 2021 while that of Postal and Courier Services amounted to 0.1 percent of total GDP. At constant prices, the ICT sector contributed P1, 130.9 million of value added which is 2.4 percent of the total GDP. The Postal and Courier Services Sector produced a value-added of P43.2 million at constant prices, thus contributing 0.1 percent of the total GDP.



Transport & Infrastructure Statistics Stats Brief Quarter 3 2021

Periodicity: Quarterly
Pages: 24
Published: January 2022

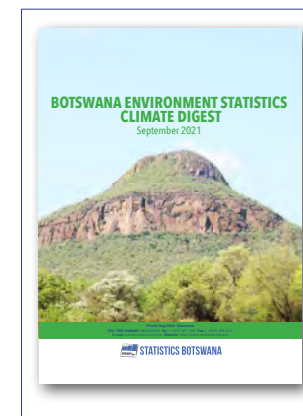
Vehicles registered for the first time this quarter was 10,494, which was an increase of 0.9 percent from Q2 2021. Out of this total 79.6 percent were used, while 20.3 and 0.1 percent were brand new and rebuilt vehicles respectively.



Botswana Environment Statistics Climate Digest September 2021

Periodicity: Quarterly
Pages: 22
Published: January 2022

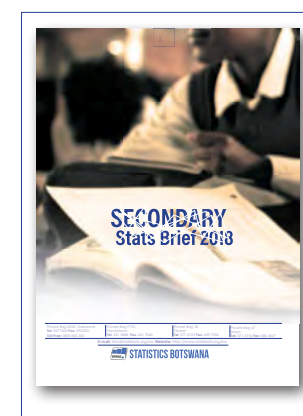
In the review period April to September 2021, Goodhope received the highest total rainfall in a month, recording 35.0 mm in April 2021, followed by Tsabong at 31.2 mm also in April 2021, while Werda recorded 23.8 mm in September 2021. For the study period, the highest rainfall recorded in a 24 hour period was that for Tsabong at 28.8 mm in April 2021, followed by Werda at 23.8 mm, in September 2021, and Goodhope at 13.8 mm, in April 2021. The wettest area was Goodhope, recording a total of 65.4 mm followed by Werda at 49.6 mm and Tsabong 40.4 mm, over the six months period.



Secondary Education Stats Brief 2018

Periodicity: Annually
Pages: 32
Published: January 2022

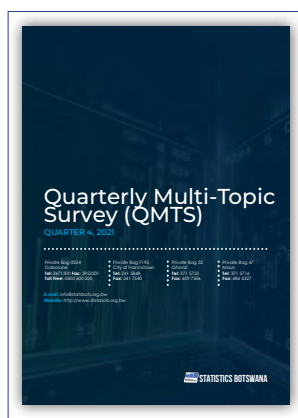
The report shows that there has been an increase of 5.4 percent in the number of secondary schools, from 276 in 2009 to 291 in 2018. However, a decrease of 5.8 percent was recorded in the number of privately owned secondary schools between 2015 and 2018. Out of the 291 secondary schools that operated in 2018, Government



schools constituted 81.4 percent of all secondary schools in the country, while government aided and private schools constituted 1.4 and 17.2 percent respectively.

Quarterly Multi-Topic Survey (QMTS) Quarter 4 2021

Periodicity: Quarterly
Pages: 108
Published: January 2022



The Employed population (15 years and above) recorded a decline of 2.2 percent between quarters four (4) of 2020 and four (4) of 2021, from 733,875 to 717,418 persons. This was accompanied by an increase of 5.7 percent of unemployed persons, from 238,731 to 252,316 persons over the period. The unemployment rate (persons aged 15 years and above) went up by 1.5 percentage points, from 24.5 percent in the fourth of 2020, to 26.0 percent in the fourth quarter of 2021.

Pilot National Multidimensional Poverty Index Report 2021

Periodicity: Adhoc
Pages: 36
Published: January 2019



The results of the Pilot National MPI reveal that 20.84% of the population is multidimensionality poor, with average poverty intensity of 51.08%. Poverty incidence is higher in rural areas than in towns and cities. The results also show the indicator deprivation levels per district. Those in severe multidimensional poverty account for 3.9%, while the vulnerable ones are 15.94% of the population.

Index of the Physical Volume of Mining Production Stats Brief Quarter 4 2021

Periodicity: Quarterly
Pages: 15
Published: April 2022

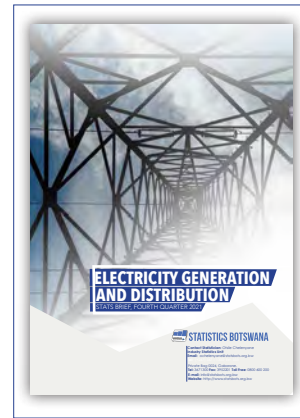


The Index of Mining Production stood at 82.0 during the fourth quarter of 2021, showing a year-on-year increase of 28.1 percent from 64.0 recorded during the fourth quarter of 2020. Comparison on a quarter-on-quarter basis shows a decrease of 19.6 percent, from the index of 101.9 realised during the third quarter of 2021.

Electricity Generation and Distribution Stats Brief Quarter 4 2021

Periodicity: Quarterly
Pages: 16
Published: April 2022

The Index of Electricity Generation (IEG) stood at 111.7 during the fourth quarter of 2021, reflecting a decrease of 9.3 percent compared to 123.1 recorded during the same period in 2020. The quarter-on-quarter comparison shows a decrease of 18.9 percent, from the index of 137.7 during the third quarter of 2021.



Gross Domestic Product Quarter 4 2021

Periodicity: Quarterly
Pages: 22
Published: April 2022

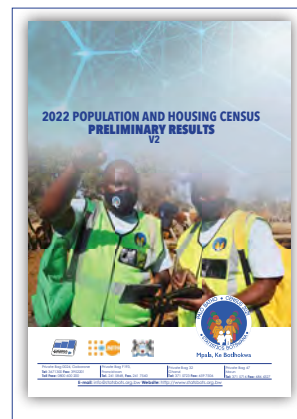
The nominal Gross Domestic Product for the fourth quarter of 2021 was P50, 408.8 million compared to P49, 286.8 million registered during the previous quarter. This represents a quarterly increase of 2.3 percent in nominal terms between the two periods. During the quarter under review, Public Administration and Defence became the major contributor to GDP by 18.3 percent, followed by Mining & Quarrying by 11.9 percent.



2022 Population and Housing Census Preliminary Results Version 2

Periodicity: Adhoc
Pages: 16
Published: May 2022

Botswana's population continues to grow, albeit at a decreasing rate. The population increased from 2,024,904 in 2011 to 2,346,179 in 2022 constituting an increase of 15.9 percent over the period between the two censuses. The annual population growth rate between 2011 and 2022 is estimated at 1.4 percent, indicating a decline from the 1.9 percent estimated in 2011. The current growth rate follows the previous trend showing a decline starting from 4.6 percent in 1981, 3.5 percent in 1991, 2.4 percent in 2001 to 1.9 percent in 2011.





Tourism Statistics Annual Report 2020

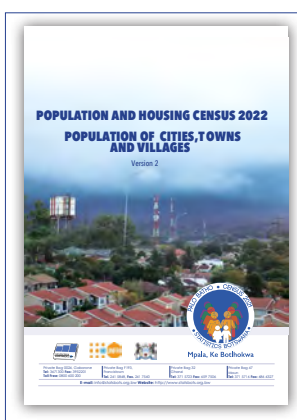
Periodicity: Annually

Pages: 86

Published: May 2022

Tourists refer to both same-day visitors and overnight visitors. In 2020, the country received a total of 358,225 visitors, with 91.7 percent (328,502) attributable to tourists (overnight visitors) while same-day visitors accounted for 8.3 percent (29,723). Tourists and traveller arrivals declined by 80.4 percent (1,472,049) and 80.7 percent (2,087,077) respectively compared to 2018.

Population & Housing Census 2022: Population of Cities, Towns, and Villages Version 2



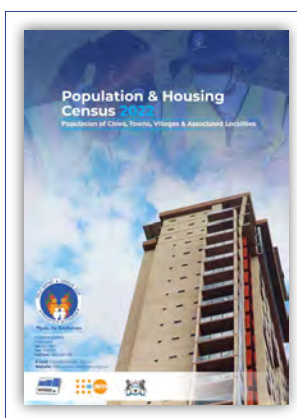
Periodicity: Adhoc

Pages: 62

Published: June 2022

This report presents population figures with disaggregation by gender for cities, towns, and villages identified in Botswana during the census cartographic listing exercise and census enumeration. The report builds on the report of the preliminary results by providing new insights through further disaggregation of the populations of cities and towns and the inclusion of all villages. However, it is worth noting that populations of localities associated with villages, for each district, have been lumped together in this report. The disaggregated populations of localities associated with each of the villages in each district will be presented in the next report following the completion of the related data verification and validation.

Population and Housing Census 2022: Population of Cities, Towns, Villages & Associated Localities



Periodicity: Adhoc

Pages: 392

Published: December 2022

The 2022 Population and Housing Census reports released so far, as previously stated, were subject to changes following further data processing. There have been some slight changes in the populations of some districts and also between localities within districts due to the following; a. Realignment of some villages and localities within districts: An example is a realignment of villages between Ngwaketse, Barolong and Ngwaketse West districts where some villages from Ngwaketse were excised to either Barolong or Ngwaketse West. b. Changes due to assignment of codes and Enumeration Areas by Extensions: Examples are Francistown and Gaborone cities. The two (2) cities were affected by the realignment of enumeration areas to extensions; while differences in other districts and villages' populations were affected by the realignment of locality codes between villages and their associated localities within a given district. c. Changes in populations due to the realignment of some localities

to their associated villages: A sizeable number of localities did not have names and in the process of corrections based on coordinates, they were moved to their rightful associated villages and districts

Statistics Botswana Intercensal Schedule of Surveys

Periodicity: Adhoc

Pages: 3

Published: June 2022

This is a schedule of Surveys by Statistics Botswana showing the implementation year and the Directorate responsible.

Tertiary Education Statistics 2020

Periodicity: Annually

Pages: 83

Published: June 2022

Enrolment in Botswana's tertiary education has been grouped into two broad categories private and public, admission to either of the two depends on the choices made by students. In 2020, a total of 56,666 students pursuing tertiary studies in Botswana: 37,061 (65.0%) in public tertiary institutions and 19,605 (35.0%) in private tertiary institutions. Of the 37,601 public tertiary institutions, the majority, 62 percent were enrolled in public universities.

Information and Communication Technology Stats Brief Quarter 4 2021

Periodicity: Quarterly

Pages: 15

Published: June 2022

The fixed telephone line subscriptions decreased by 2.9 percent in Q4 2021, from 136,356 which was registered in Q3 2021 to 132,457 in Q4 2021. Mobile cellular telephone subscriptions went up by 3.4 percent in the quarter, from 4,023,009 registered in Q3 2021 to 4,160,553. Internet subscriptions also increased in Q4 2021 by 3.4 percent, from 2,472,260 subscriptions in Q3 2021 to 2,557,538.

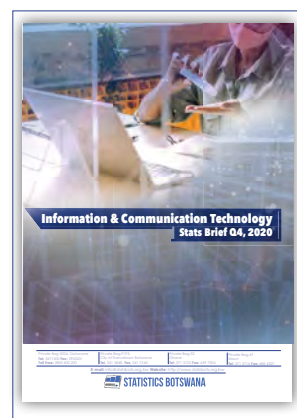
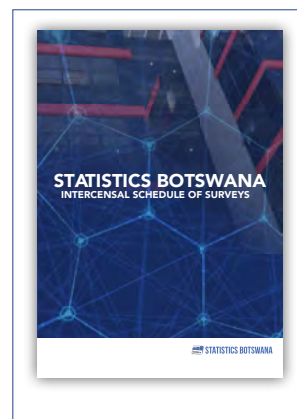
Botswana Food Imports January 2022

Periodicity: Monthly

Pages: 2

Published: June 2022

In January 2022, Botswana's total imports were valued at P6, 932,828,809.5. In this amount, food imports contributed P845, 687,106.2 translating to 12.2 percent. Cereals accounted for 22.4 percent of food imports, followed by Beverages, Spirits & Vinegar, and Preparations of Vegetables, Fruit, Nuts, or Other Parts of Plants, with 19.2 percent and 7.8 percent respectively.





Botswana Food Imports February 2022

Periodicity: Monthly

Pages: 2

Published: June 2022

As of February 2022, Botswana's total imports were valued at P 8, 270, 089, 856.1. In this amount, food imports contributed P 860, 997, 431.8 translating to 10.4 percent. Beverages, Spirits & Vinegar accounted for 18.9 percent of food imports, followed by Cereals and Preparations for cereals, flour, starch, or milk; pastry cooks' products with 18.0 percent and 8.8 percent respectively.



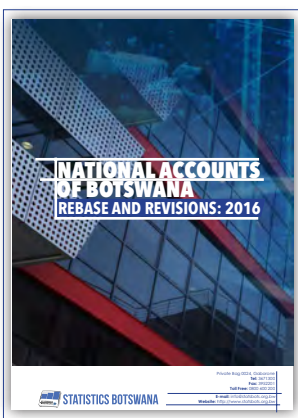
Botswana Food Imports March 2022

Periodicity: Monthly

Pages: 2

Published: June 2022

In March 2022, Botswana's total imports were valued at P 9, 872, 555, 567.2. In this amount, food imports contributed P 1, 173, 829, 205 translating to 11.9 percent. Cereals accounted for 26.8 percent of food imports, followed by Beverages, Spirits & Vinegar, and Animal or vegetable fats and oils with 13.8 percent and 8.0 percent respectively.



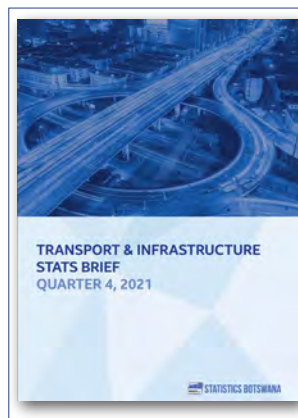
National Accounts Botswana Rebase and Revisions 2016

Periodicity: Adhoc

Pages: 34

Published: June 2022

GDP for 2016 in the revised estimates is 3.6 percent below the level of GDP in the previous estimates. This is due to the estimates of import taxes. The previous estimates classified total revenue from the Southern African Customs Union (SACU) as import duties. Only customs and excise duties actually collected in Botswana are now included. This is according to the 2008 SNA and in agreement with a decision of SACU, which is in line with the definitions of the SNA.



Transport and Infrastructure Stats Brief Quarter 4 2021

Periodicity: Quarterly

Pages: 26

Published: June 2022

A total of 10,063 vehicles were registered for the first time during Q4 2021. Of these vehicles, 80.5 percent were used vehicles while 19.4 and 0.1 percent were new and rebuilt vehicles respectively.

Index of the Physical Volume of Mining Production Stats Brief Quarter 1 2022

Periodicity: Quarterly
Pages: 15
Published: June 2022

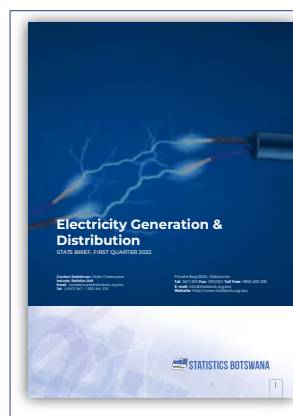
The Index of Mining Production stood at 97.0 in the first quarter of 2022, showing a year-on-year increase of 30.4 percent from 74.4 recorded in the first quarter of 2021. Comparison on a quarter-on-quarter basis shows an increase of 18.3 percent, from the index of 82.0 realised during the fourth quarter of 2021.



Electricity Generation & Distribution Stats Brief Quarter 1 2022

Periodicity: Quarterly
Pages: 15
Published: June 2022

The Index of Electricity Generation (IEG) stood at 151.9 during the first quarter of 2022, reflecting a year-on-year increase of 8.2 percent compared to 140.3 recorded during the corresponding quarter in 2021. Similarly, the quarter-on-quarter comparison shows an increase of 36.0 percent, from 111.7 during the fourth quarter of 2021 to 151.9 during the current quarter.



Annual Agricultural Survey Report 2017 (Revised Version)

Periodicity: Adhoc
Pages: 92
Published: June 2022

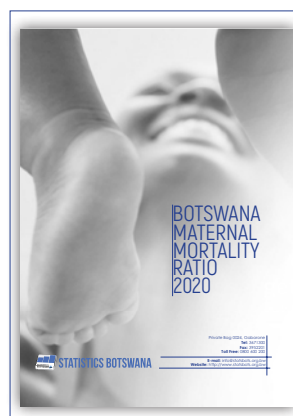
This is a revised version of the 2017 Annual Agriculture Survey report that was released in January 2019. The results of the 2017 agricultural survey depict improved trends between livestock and crop production within the traditional sector. Livestock production especially cattle continued to decline in 2017, while arable production showed a marked improvement in all the major crops compared to the 2015 agricultural census results.



Botswana Maternal Mortality Ratio 2020

Periodicity: Adhoc
Pages: 17
Published: July 2022

The brief shows that 76 maternal deaths were reported in 2020 from 58,244 live births yielding a Maternal Mortality Ratio (MMR) of 131 maternal deaths per 100,000 live births. The Maternal Mortality Ratio declined steadily from 156.6 in 2016 to 133.7 in 2018 and increased to 166.3 deaths per 100,000 live births in 2019.

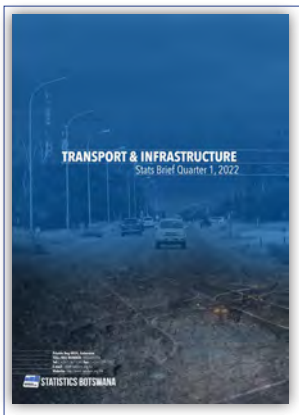




Botswana Food Imports April 2022

Periodicity: Monthly
Pages: 2
Published: July 2022

In April 2022, Botswana's total imports were valued at P 6, 706, 328, 776. In this amount, food imports contributed P 871,528,864 translating to 13.0 percent. Beverages, Spirits & Vinegar, and Cereals accounted for 19.4 percent and 16.9 percent of food imports, respectively. Preparations of cereals, flour, starch, or milk; pastry cooks' products and miscellaneous edible preparations followed with 8.0 percent each.



Transport and Infrastructure Stats Brief Quarter 1 2022

Periodicity: Quarterly
Pages: 30
Published: July 2022

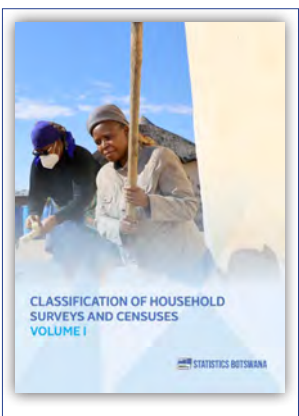
Aircraft movements decreased by 21.1 percent in Q1 2022 while passenger movements went down by 10.9 percent. Despite the decrease in passenger movements, international air passenger movements increased by 3.4 percent while domestic movements went down by 24.0 percent. 28. Consumer Price Index June 2022



Deaths Stats Brief 2020

Periodicity: Annually
Pages: 20
Published: July 2022

There has been an increase in death registration from 69.7 percent in 2014 to 80.1 percent in 2019. This is indicative of the fact that births and death registration campaigns held by the Department of CNR across the country are bearing fruit.



Classification of Households Surveys & Census, Volume 1

Periodicity: Adhoc
Pages: 110
Published: August 2022

This publication presents the Botswana Classification of Households which is a coding scheme used for surveys and censuses. Statistics Botswana, as an organization mandated to produce official statistics, has to develop and operationalize national classifications which are in line with international standards.

Seal Branding Guidelines March 2017

Periodicity: Adhoc
Pages: 19
Published: August 2022

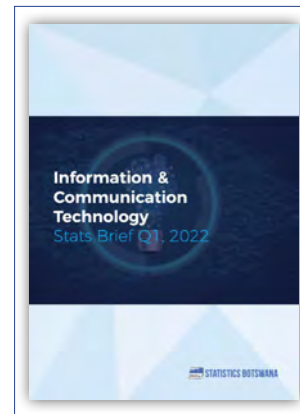
The purpose of these guidelines is to provide the National Statistical System (NSS) with guidance on the proper use of the Statistics Botswana Seal in an effort to manage expectations. The seal is provided for under Section 5 and Section 28 (4) of the Statistics Act. Section 5 prescribes generic use as well as the management of the seal. Section 28 (4) prescribes the use of the seal for authenticating official statistics.



Information and Communication Technology Stats Brief Quarter 1 2022

Periodicity: Quarterly
Pages: 14
Published: August 2022

The contribution of the ICT sector to the economy stood at 2.7 percent of total GDP at current prices in Q1 2022 while that of Postal and Courier Services amounted to 0.1 percent of total GDP. At constant prices, the ICT sector contributed P1, 224.1 million of value added which is 2.5 percent of the total GDP. The Postal and Courier Services sector produced a value-added of P45.0 million at constant prices, thus contributing 0.1 percent of the total GDP.



Stats Update June 2022

Periodicity: Quarterly
Pages: 5
Published: August 2022

This report is a summary of the latest available statistics.



Work Permit Stats Brief Quarter 2, 2021

Periodicity: Quarterly
Pages: 16
Published: August 2022

The results presented in this brief show an increase of work permit holders from 3,458 in June 2021 to 3,779 in September 2021, an increase of 9.3 percent. The Agricultural sector continues to record the majority of the work permit holders with 24.5 percent followed by Construction with 15.6 percent. Work permit holders by age group showed that overall, the number of persons aged 40-44 was leading with 17.9 percent followed by age groups 45-49 and 35-39 recording 16.5 percent and 15.8 percent respectively.





Botswana Food Imports May 2022

Periodicity: Monthly
Pages: 2
Published: August 2022

In May 2022, Botswana's total imports were valued at P8, 380, 874, 594. In this amount, food imports contributed P871,386, 363 translating to 10.4 percent. Cereals and Beverages, Spirits & Vinegar accounted for 19.7 percent and 16.1 percent of food imports, respectively. The dairy produced; birds' eggs; natural honey; edible products of animal origin, not elsewhere specified or included, followed by 8.2 percent each.



Secondary Education Stats Brief 2019

Periodicity: Quarterly
Pages: 28
Published: August 2022

The report shows that there has been an increase of 5.4 percent in the number of secondary schools, from 276 in 2009 to 291 in 2019. However, a decrease of 3.8 percent was recorded in the number of privately owned secondary schools between 2015 and 2019. Out of the 291 secondary schools that operated in 2019, Government schools constituted 81.4 percent of all secondary schools in the country, while government-aided and private schools constituted 1.4 and 17.2 percent respectively.



Botswana AIDS Impact Survey (BAIS V) Summary sheet

Periodicity: Adhoc
Pages: 5
Published: September 2022

Among adults aged 15-64 years, HIV prevalence ranged from 2.7% for females aged 15-19 years to 52.0% for females aged 45-49 years, and from 1.6% for males aged 15-19 years to 39.0% for males aged 50-54 years. By 5 year age groups, HIV prevalence was higher among females than males in each age group from ages 20-24 years through 40-44 years.



Transport and Infrastructure Stats Brief Quarter 2, 2022

Periodicity: Quarterly
Pages: 32
Published: September 2022

A total of 77,151 people crossed the Kazungula bridge in Q2 2022, showing an increase of 47.5 percent from what was recorded in the previous quarter. Non-citizens constituted 89.2 percent of total movement on the bridge.

Electricity Generation and Distribution Stats Brief Quarter 2 2022

Periodicity: Quarterly
Pages: 16
Published: September 2022

The Index of Electricity Generation (IEG) stood at 223.0 during the second quarter of 2022, reflecting a year-on-year increase of 85.5 percent compared to 120.2 recorded during the corresponding quarter in 2021. Similarly, the quarter-on-quarter comparison shows an increase of 46.8 percent, from 151.9 during the first quarter of 2022 to 223.0 during the current quarter.

Index of the Physical Volume of Mining Production Stats Brief Quarter 2 2022

Periodicity: Quarterly
Pages: 15
Published: September 2022

The Index of Mining Production stood at 88.9 in the second quarter of 2022, showing a year-on-year increase of 3.8 percent from 85.6 recorded in the second quarter of 2021. Comparison on a quarter-on-quarter basis shows a decrease of 8.4 percent, from the index of 97.0 realised during the first quarter of 2022.

Gross Domestic Product Quarter 2 2022

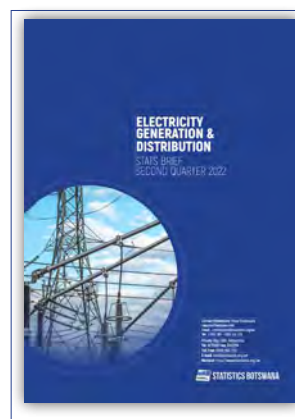
Periodicity: Quarterly
Pages: 22
Published: September 2022

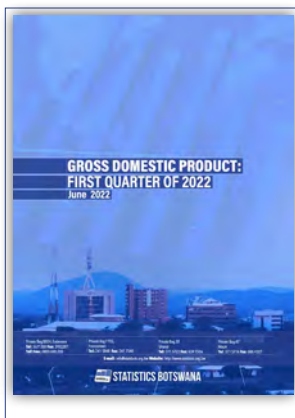
The nominal Gross Domestic Product for the second quarter of 2022 was P58, 586.1 million compared to P53, 846.3 million registered during the previous quarter. This represents a quarterly increase of 8.8 percent in nominal terms between the two periods. During the quarter under review, Mining & Quarrying became the major contributor to GDP by 16.7 percent, followed by Public Administration and Defence by 16.6 percent.

International Arrivals Stats Brief Quarter 1 2022

Periodicity: Quarterly
Pages: 28
Published: September 2022

The country received a total of 158,284 international tourists during the first quarter of 2022. These represented 90.1 percent of total inbound arrivals, the bulk of which emanated from the SADC sub-region. South Africa contributed 56,742, representing 35.8 percent of overall tourist arrivals. In Transit, tourists represented the highest proportion of tourists, at 47.9 percent (75,804) followed by Business tourists at 20.4 percent (32,330), while Holiday tourists accounted for 16.8 percent (26,666) of all the tourist arrivals.

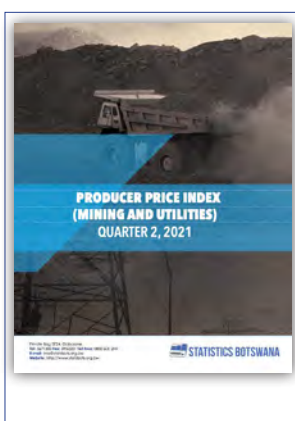




Gross Domestic Product Quarter 1 2022

Periodicity: Quarterly
Pages: 20
Published: June 2022

The nominal Gross Domestic Product for the first quarter of 2022 was P53, 830.8 million compared to P50, 420.8 million registered during the previous quarter. This represents a quarterly increase of 6.8 percent in nominal terms between the two periods. During the quarter under review, Public Administration and Defence became the major contributor to GDP by 17.5 percent, followed by Mining & Quarrying by 13.3 percent.



Producer Price Index (Mining and Utilities) Quarter 2 2021

Periodicity: Quarterly
Pages: 8
Published: August 2022

The Mining Producer Price Annual Inflation for the second quarter of 2021 stood at 9.3 percent compared to -2.8 percent in the first quarter of 2021, registering an increase of 11.6 percentage points. The main drivers of the increase in the Mining Producer Price annual inflation were the section indices of Diamond, Gold and Salt.



Information and Communication Technology Stats Brief Quarter 2, 2022

Periodicity: Quarterly
Pages: 16
Published: October 2022

The fixed telephone line subscriptions declined by 1.1 percent in Q2 2022, from 90,518 registered in Q1 2022 to 89,487. Mobile cellular telephone subscriptions however registered a slight increase of 0.6 percent in Q2 2022, from 4,243,124 in Q1 2021 to 4,269,919. Internet subscriptions increased as well in Q2 2022. They rose by 0.8 percent from 2,547,335 in Q1 2022 to 2,567,146.



Botswana Food Imports June 2022

Periodicity: Monthly
Pages: 2
Published: October 2022

Botswana's total imports were valued at P8,419,377,021 during the month of June 2022. In this amount, Food imports contributed P2, 250,519,725, translating to 26.7 percent. Sugars & Sugar Confectionery accounted for 48.6 percent of food imports. Cereals and Beverages, Spirits & Vinegar followed with 19.4 percent and 6.6 percent respectively.

Botswana Food Imports July 2022

Periodicity: Monthly

Pages: 2

Published: October 2022

Botswana's total imports were valued at P 8,066,571,674 in July 2022. In this amount, Food imports contributed P938, 486,809 translating to 11.6 percent. During the month under review, Cereals accounted for 17.0 percent of Food imports. Sugars & Sugar Confectionery and Beverages, Spirits & Vinegar followed with 16.7 percent and 11.5 percent respectively.



Botswana Environment Statistics Climate Digest 2021

Periodicity: Annual

Pages: 62

Published: November 2022

It is evident that Botswana's Greenhouse gas (GHG) emissions have been on an increasing trend since the year 2000 to 2015. The year 2015 had the highest GHG emissions at 12,622.11 Gg CO₂-eq which was a 71.9 percent increase from the initial year 2000, the Energy sector being the major contributor. Even though Agriculture, (AFOLU)-Forestry and other Land use without LULUCF)-Land Use, Land-Use Change, and Forestry saw a drop from the initial 1,707.11 Gg CO₂ eq emissions in 2000 it was the second major contributor to greenhouse gas emissions during the 2000 to 2015 period. The waste sector had the highest increase in emissions (244.82 percent) from the initial year to 2015.



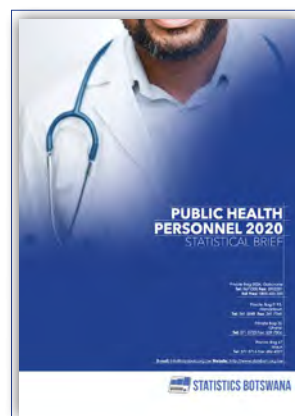
Public Health Personnel Stats Brief 2022

Periodicity: Adhoc

Pages: 13

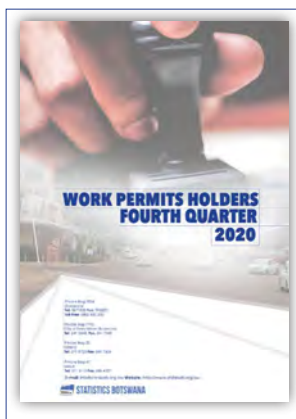
Published: November 2022

The report shows the geographic distribution of public health workers across the country and their places of work. Most of the health workers are based in Gaborone (16 %), followed by Francistown (10.9%) and Lobatse (6.0%). The top four Health Districts with the highest number of employees are host to Botswana's three referral hospitals. About 92 percent of the health workers are based at District Health Management (DHMTs) where there are Hospitals, clinics and Health posts. This is followed by those based at the Ministry of Health and wellness Head Quarters (HQ) at 5 percent. Very few are from secondary schools, Nursing Council, National Health Lab (NHL), UB Academic Hospital and Central Medical Stores (CMS).



Work Permits Holders Quarter 4 2021

Periodicity: Quarterly
Pages: 16
Published: November 2022



The results presented in this brief show a decrease in work permit holders from 3,779 in September 2021 to 3,409 in December 2021, a decrease of 9.8 percent. The Agricultural sector continues to record the majority of the work permit holders with 25.2 percent followed by Construction with 15.1 percent. Work permit holders by age group showed that overall, the number of persons aged 40- 44 was leading with 17.3 percent followed by age groups 45-49 and 35-39 recording 16.9 percent and 16.1 percent respectively.

Botswana Food Imports August 2022

Periodicity: Monthly
Pages: 2
Published: November 2022

In August 2022, Botswana's total imports were valued at P6,926,262,137. In this amount, the share of Food Imports was P1,016,151,639 (14.7 percent). Cereals accounted for the largest share of Food Imports at 18.3 percent. Beverages, Spirits & Vinegar and Preparations of cereals, flour, starch, or milk; pastry cooks' products followed with 14.8 percent and 9.3 percent respectively.

Producer Price Index (Mining Utilities) Quarter 3 & 4 2021

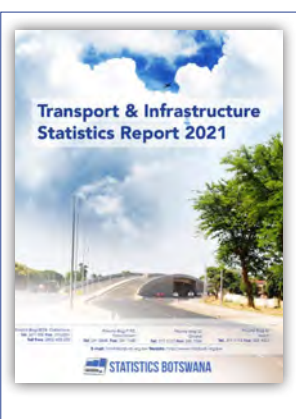
Periodicity: Quarterly
Pages: 8
Published: November 2022



The Mining Producer Price Index registered an increase of 18.4 percent, moving from 88.8 in Quarter 3 of 2021 to 105.1 in Quarter 4 of 2021. The rise was due to the growth in section indices of diamond (19.5 percent), coal (10.1 percent), Soda Ash (7.9 percent), and salt (5.3 percent).

Transport and Infrastructure Statistics Report 2021

Periodicity: Quarterly
Pages: 62
Published: November 2022



A total of 17,277 road accidents occurred in 2021, an increase of 14.6 percent from the 15,075 accidents which occurred in 2020. On average road accidents went down by 1.9 percent annually from 2012 to 2021. Road casualties in 2021 totalled 5,219, of which 7.9 percent were fatalities.

International Standard Classification of Education ISCED Rev 2013

Periodicity: Adhoc

Pages: 52

Published: December 2022

This publication provides the International Standard Classification of Education 2013 (ISCED 2013). The ISCED classification was adopted by the UNESCO General Conference at its 36th session in November 2011. It was initially developed by UNESCO in the 1970s, and first revised in 1997. The ISCED classification serves as an instrument to compile and present education statistics both nationally and internationally.



Crime Statistics Report 2020

Periodicity: Annually

Pages: 42

Published: December 2022

The chart below shows the trend distribution of decided cases from 2016 to 2020. It shows a steady increase from 6,830 cases in 2017 to 9,499 in 2019. This was followed by a huge decrease to 4,148 cases in 2020. The decrease can be attributed to the fact that in March 2020 The World Health Organization (WHO) declared COVID-19 a global pandemic. In response, in April Botswana started to put measures in place to curb the spread of the virus; The country went on Lockdown in April and continued through May, as a result, many activities including case hearings were suspended hence the decrease in cases disposed of in 2020.



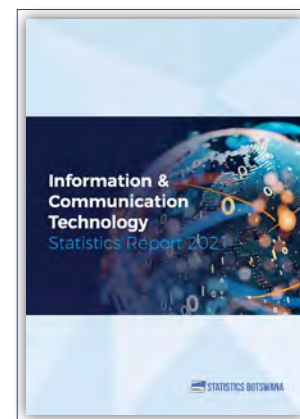
Information and Communication Technology Statistics Report 2021

Periodicity: Quarterly

Pages: 48

Published: December 2022

In 2020, electrical and electronic equipment put on the market registered an increase of 8.0 percent with a total of 21,097 tonnes compared to 19,542 tonnes recorded in 2019. A total of 13,494 tonnes of e-waste was generated in 2020, indicating an increase of 4.4 percent from the 12,920 tonnes registered in 2019.



Index of the Physical Volume of Mining Production Stats Brief Quarter 3 2022

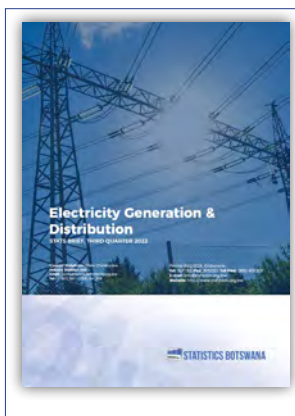
Periodicity: Quarterly

Pages: 15

Published: December 2022

The Index of Mining Production stood at 106.6 in the third quarter of 2022, showing a year-on-year increase of 4.6 percent from 101.9 recorded in the third quarter of 2021. Comparison on a quarter-on-quarter basis shows an increase of 19.9 percent, from the index of 88.9 realised during the second quarter of 2022.





Electricity Generation and Distribution Stats Brief Quarter 3 2022

Periodicity: Quarterly
Pages: 15
Published: December 2022

The Index of Electricity Generation (IEG) stood at 187.8 during the third quarter of 2022, reflecting a year-on-year increase of 36.3 percent compared to 137.7 recorded during the corresponding quarter in 2021. The quarter-on-quarter comparison shows a decrease of 15.8 percent, from 223.0 during the second quarter of 2022.



Botswana Food Imports September 2022

Periodicity: Monthly
Pages: 2
Published: December 2022

Botswana's total imports were valued at P11,805,168,285 in September 2022. In this amount, the share of Food Imports was P1,004,344,624 (8.5 percent). Beverages, Spirits & Vinegar accounted for the largest share of Food Imports at 19.8 percent. Cereals with 16.7 percent.



Gross Domestic Product Quarter 3 2022

Periodicity: Quarterly
Pages: 31
Published: December 2022

The nominal Gross Domestic Product for the third quarter of 2022 was P62,496.9 million compared to P65,217.6 million registered during the previous quarter. This represents a quarterly decrease of 4.2 percent in nominal terms between the two periods. During the quarter under review, Mining & Quarrying became the major contributor to GDP by 18.5 percent, followed by Public Administration and Defence by 16.3 percent.



Producer Price Index (Mining Utilities) Quarter 1- 3 2022

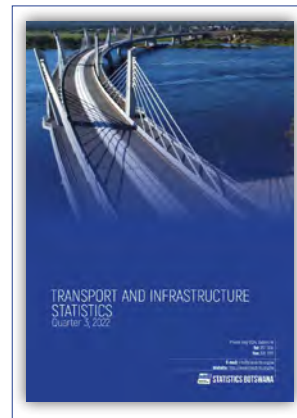
Periodicity: Quarterly
Pages: 10
Published: December 2022

The Mining Producer Price Index moved from 105.1 in Quarter 4 of 2021 to 109.3 in Quarter 1 of 2022, registering a rise of 4.0 percent. The increase was due to the growth in section indices of Soda Ash, Gold, and diamond by 12.3, 7.5, and 4.0 percent respectively. Other minerals, namely Coal and salt, recorded a decrease of 13.1 and 0.6 percent respectively.

Transport and Information Statistics Quarter 3, 2022

Periodicity: Quarterly
Pages: 28
Published: December 2022

The highest number of motor vehicle first registration in this quarter was recorded in August, at 36.5 percent of the total. Those registered in September constituted 33.8 percent of the total while for July they made up 29.6 percent.



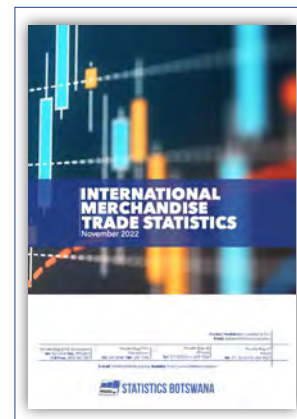
International Merchandise Trade Statistics 2022

Periodicity: Monthly
Pages: 28
Published: January – December 2022

This provides a summary of the all-released International Merchandise Trade statistics from January to December 2022. In 2022, Total Imports were valued at P99, 820.4 million, having increased by 7.1 percent (P6, 655.4 million) from the P93, 165.0 million recorded during the year 2021.

The increase in imports was mainly influenced by the upsurge in Fuel and Food, Beverages & Tobacco having contributed 64.9 percent (P7, 214.0 million) and 24.0 percent (P2, 577.6 million) respectively.

A comparison of Total Exports for 2022 to that of 2021 shows an increase of 24.5 percent (P20, 127.9 million) from P82, 265.8 million to P102, 393.8 million. The rise was mainly attributed to the increase in Diamonds, which contributed 20.4 percent (P15, 114.1 million) from P74, 129.5 million in 2021 to P89, 243.6 million registered in 2022.



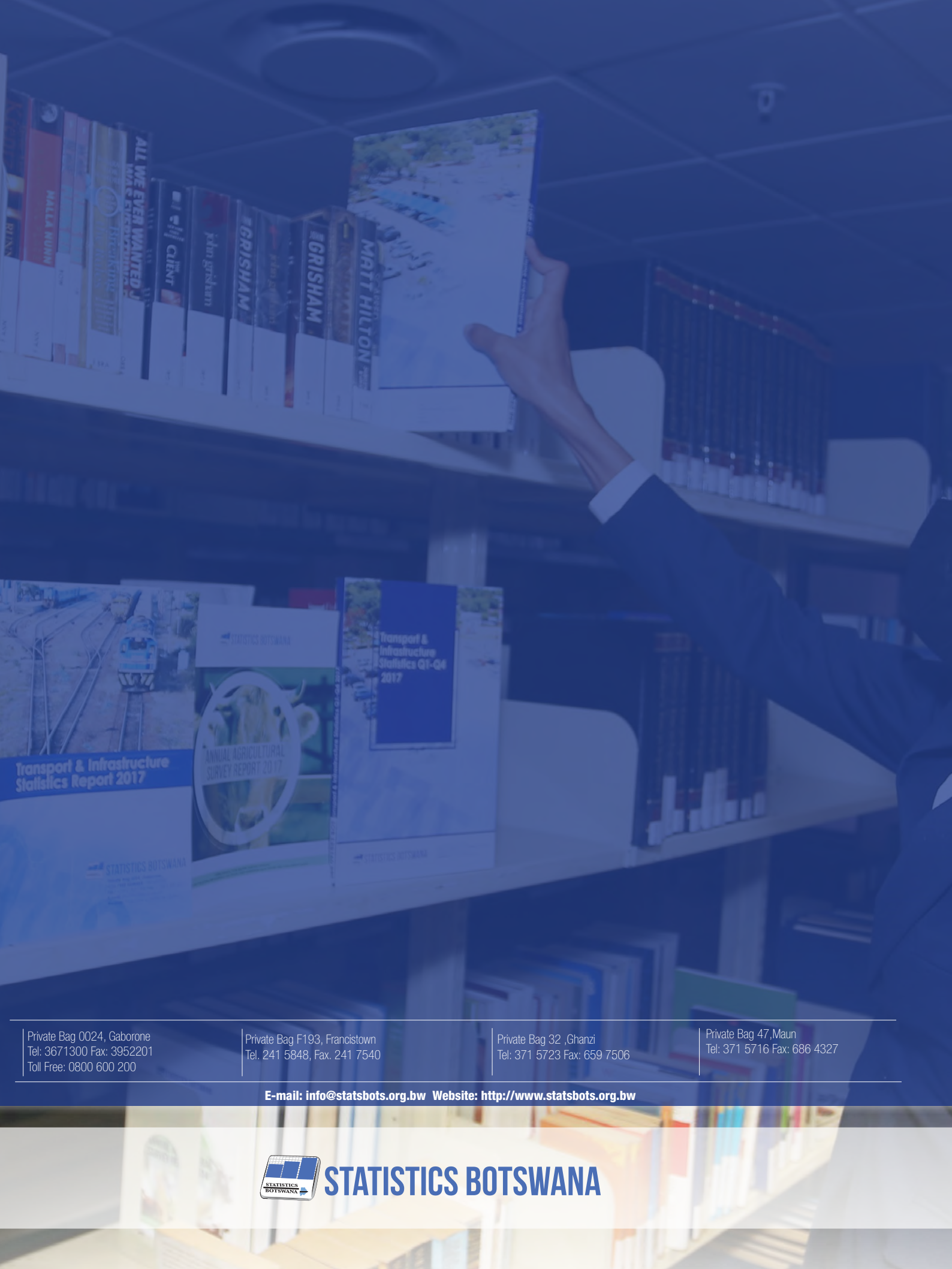
Consumer Price Index 2022

Periodicity: Monthly
Pages: 17
Published: January-December 2022

This provides a summary of the all-released Consumer Price Index from January to December 2022. The annual average inflation rate in the year 2022 stood at 12.1 percent. During the year under review, Transport Group was the top contributor (with an annual average inflation rate of 31.1 percent), followed by Food & Non-Alcoholic Beverages Group (11.1 percent), Miscellaneous Goods & Services Group (8.8 percent) and Housing, Water, and Electricity. Gas & Other Fuels Group (6.6 percent). The increase of Transport Group was due to the escalating cost of Operation of Personal Transport, Transport services, and Purchase of Vehicles.

The main components responsible for the growth rate in Food & Non-Alcoholic Beverages Group were Bread & Cereals, Meat (Fresh, Chilled & Frozen), and Oils & Fats. Miscellaneous Goods & Services Group was propelled by Insurance and Personal Care. Rent Paid by Tenants and Materials for Maintenance & Repair of Dwellings were the leading factors in the rise of the cost of Housing, Water, and Electricity. Gas & Other Fuels Group.





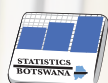
Private Bag 0024, Gaborone
Tel: 3671300 Fax: 3952201
Toll Free: 0800 600 200

Private Bag F193, Francistown
Tel. 241 5848, Fax. 241 7540

Private Bag 32 ,Ghanzi
Tel: 371 5723 Fax: 659 7506

Private Bag 47, Maun
Tel: 371 5716 Fax: 686 4327

E-mail: info@statsbots.org.bw Website: <http://www.statsbots.org.bw>



STATISTICS BOTSWANA