

Publication Catalogue

January-December 2025

Private Bag 0024, Gaborone
Tel: 3671300
Toll Free: 0800 600 200

Four Thirty Square, Plot 54350
PG Matante Road,
CBD, Gaborone

E-mail: info@statsbots.org.bw
Website: www.statsbots.org.bw



STATISTICS BOTSWANA



Publication Catalogue

January-December 2025

Published by

STATISTICS BOTSWANA
Private Bag 0024, Gaborone

Tel: 3671300 Fax: 3952201
Email: info@statsbots.org.bw
Website: www.statsbots.org.bw

March 2026

COPYRIGHT RESERVED

Extracts may be published if Source is duly acknowledge

Preface

The 2025 publication catalogue provides information on Publications released by Statistics Botswana (SB) from January to December 2025. All these publications are available on the SB website <https://>

www.statsbots.org/bw/ and SB Information Resource Centre Portal <https://botswana.opendataforafrica.org/yhesafd/documents> which is accessible to the public.



BOTSWANA INFORMATION & COMMUNICATION TECHNOLOGY STATS BRIEF Q4, 2023

Periodicity:	Quarterly
Published:	29 January 2025
Sector:	ICT Statistics
Pages:	i-ii; 1-13

The publication provides a comprehensive overview of Botswana's Information and Communication Technology (ICT) statistics for Q4 2023. It highlights trends in telephone subscriptions, internet usage, mobile money subscriptions, telephone traffic, and the ICT sector's contribution to the economy. Key findings include declines in fixed and mobile telephone subscriptions, a decrease in total internet subscriptions, and an

increase in mobile money subscriptions. The ICT sector contributed 2.9% to Botswana's GDP at current prices, with an annual growth rate of 2.9% at constant prices. The report also details domestic and international telephone traffic and SMS usage, emphasizing the importance of ICT in the country's economic landscape.

<https://www.statsbots.org.bw/sites/default/files/publications/Botswana%20Information%20%26%20Communication%20Technology%20Stats%20Brief%20Q4%20%2C2023.pdf>



MARRIAGE STATISTICS BRIEF 2023

Periodicity: Annual
Published: 27 January 2025
Sector: Vital Statistics
Pages: i-ii; 1-14

The Marriage Statistics Brief 2023 by Statistics Botswana shows a continued decline in registered marriages, from 7,631 in 2021 to 5,642 in 2022 and further down to 4,789 in 2023, representing a 15.1% drop from the previous year. Urban districts such as Gaborone, Serowe/Palapye, and Kweneng East accounted for the highest shares of marriages, while most couples lived within the same district. Marriage registrations peaked in April, September, November, and December, coinciding with holidays and favorable weather. The majority (99.4%) of marriages were conducted after the

publication of banns, with only a small fraction using special licenses. Most brides were younger than grooms, with peak marriage ages being 30–34 for women and 35–39 for men, and the median age at first marriage remaining at 41 for men and 36 for women. About 80% of grooms were older than their brides, and most unions involved bachelors and spinsters, while 86.8% were first-time marriages for both partners. The crude marriage rate (CMR) stood at 1.9 per 1,000 people, signaling a steady decline in the number and rate of marriages in Botswana.

<https://www.statsbots.org.bw/sites/default/files/Marriage%20Statistics%20Brief%202023.pdf>



VITAL STATISTICS REPORT 2022 VERSION 2

Periodicity: Annual

Published: 15 January 2025

Sector: Vital Statistics

Pages: I-iii; 1-67

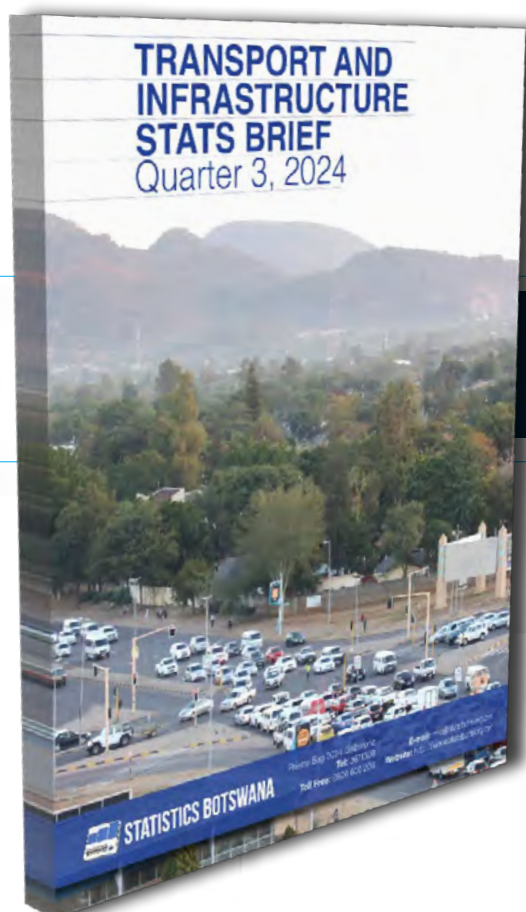
ISBN: 978-99968-909-8-7 (E-Book)

978-99968-909-5-6 (Paperback)

In 2022, a total of 55,362 births were registered, with 49,258 occurring in the same year, including 794 stillbirths. The crude birth rate decreased from 25 per 1,000 population in 2021 to 20.5 in 2022, with adolescent birth rates dropping significantly. Only 17% of births were to married mothers, reflecting delayed marriage trends, as the median age at first marriage increased to 41 for males and 36 for females. Marriage registrations declined by 26.1% from 2021 to 2022, with 93% of grooms and 97% of brides marrying for the first time. Seasonal trends showed higher marriage registrations

during the summer months and year-end holidays. In terms of deaths, 15,843 were registered in 2022, with 13,924 occurring in the same year. Death registration decreased from 100% in 2021 to 87.8% in 2022, and the crude death rate dropped from 6.8 to 5.7 per 1,000 population. Infant mortality rates rose to 21.6 per 1,000 live births, while the under-five mortality rate reached 27 per 1,000 live births, with Francistown reporting higher infant death rates. Life expectancy at birth was 76 years for females and 72 years for males.

<https://www.statsbots.org.bw/sites/default/files/publications/Vital%20Statistics%20Report%202022%20Version%202.pdf>



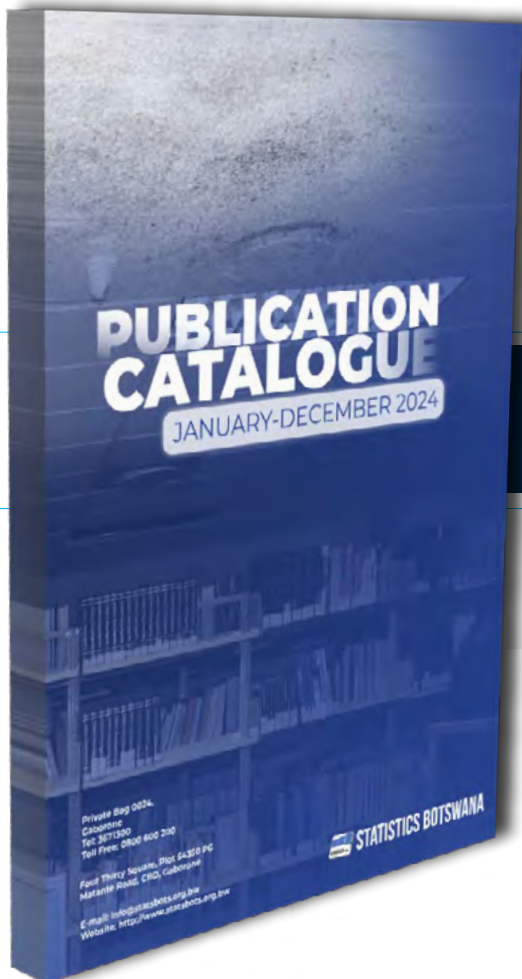
TRANSPORT AND INFRASTRUCTURE STATS BRIEF QUARTER 3, 2024

Periodicity:	Quarterly
Published:	10 February 2025
Sector:	Transport and Infrastructure Statistics
Pages:	1-31

This Stats Brief provides a summary of Transport and Infrastructure Statistics for Quarter 3, 2024, covering motor vehicle registrations, rail, and air transport. First-time registrations totaled 11,938, an increase of 4.2% from Q2 2024. Passenger cars constituted the majority at 74.8%. Most vehicles originated from Japan (65.3%) and were used vehicles (78.8%). Mazda, Toyota, and Honda were the leading makes. The volume of goods

transported through rail decreased by 9.0% to 249,877 net tonnes. Imports accounted for 33.2% and exports for 31.2% of total traffic. Total exports declined by 23.5%, while transit and local traffic increased. Revenue generated from rail freight declined by 4.7%, totaling P62.3 million. Aircraft movements increased by 14.5% to 23,711, with domestic movements making up 81.2%.

<https://www.statsbots.org.bw/sites/default/files/Transport%20and%20Infrastructure%20Stats%20Brief%20Quater%203%202024.pdf>

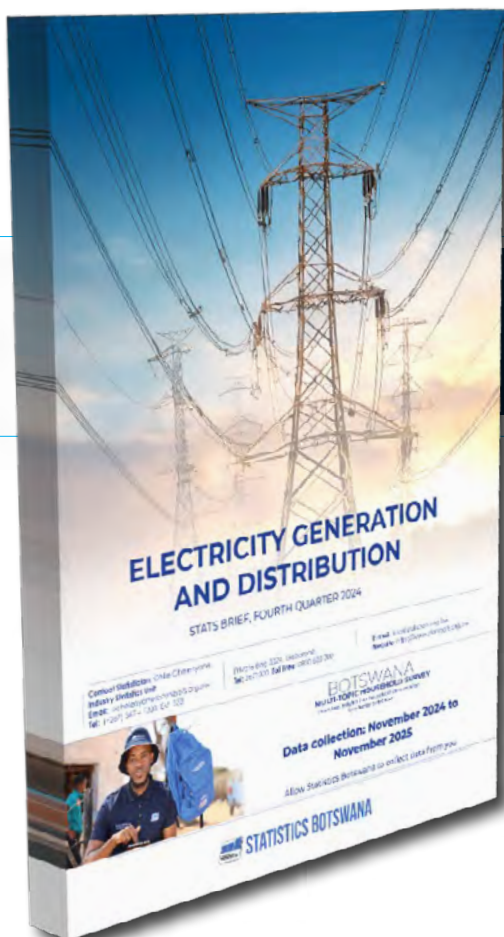


PUBLICATION CATALOGUE JANUARY - DECEMBER 2024

Periodicity: Annual
Published: 31 March 2025
Pages: 1-29

This publication provides a summary of all released and published Statistics Botswana publications across all sector statistics in the year 2024 (January-December)

<https://www.statsbots.org.bw/sites/default/files/Publication%20Catalogue%20January%20-December%202024.pdf>



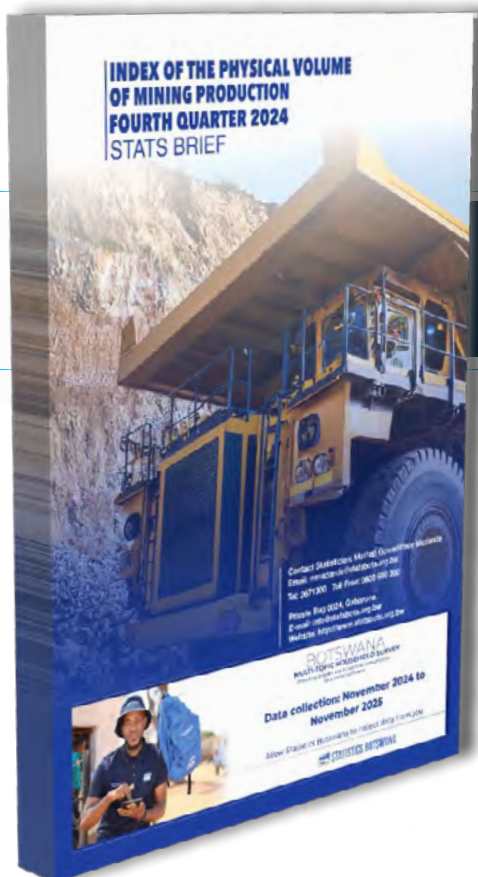
ELECTRICITY GENERATION AND DISTRIBUTION STATS BRIEF, QUARTER 4 2024

Periodicity: Quarterly
Published: 31 March 2025
Sector: Industry
Pages: 1-14

In the fourth quarter of 2024, Botswana's electricity generation rose by 29.9 percent year-on-year to 849,846 MWh, despite a 14 percent quarterly decline caused by challenges at Morupule A and B power stations. Coal remained the dominant source at 97.6 percent, while solar contributed 0.3 percent, marking progress in renewable integration. Electricity imports fell 31.2 percent to

356,682 MWh, mainly from Eskom and ZESCO. Distributed electricity increased 2.9 percent to 1,206,527 MWh, with local generation supplying 70.4 percent of national demand—up from 55.8 percent a year earlier—showing stronger domestic capacity and reduced reliance on imports.

<https://www.statsbots.org.bw/sites/default/files/publications/Electricity%20Generation%20and%20Distribution%20Stats%20Brief%2CFourth%20Quarter%202024.pdf>



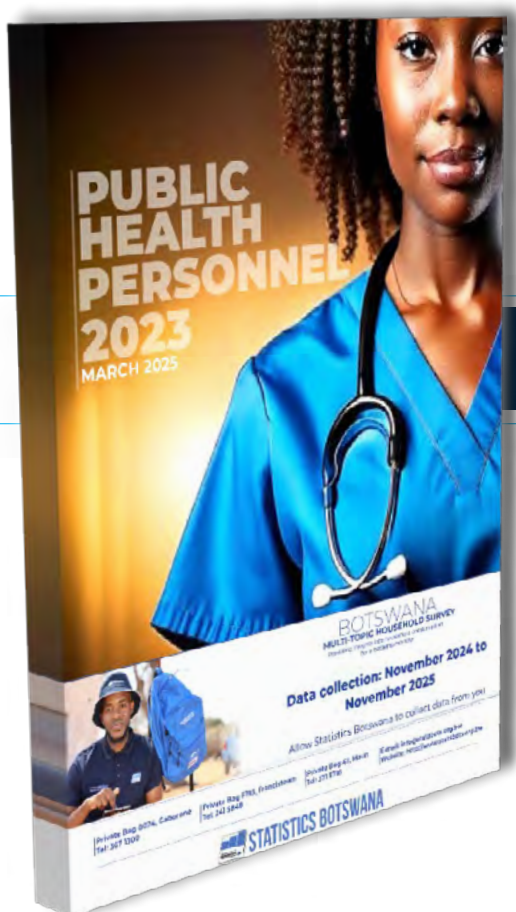
INDEX OF THE PHYSICAL VOLUME OF MINING PRODUCTION, QUARTER 4, 2024 STATS BRIEF

Periodicity: Quarterly
Published: 31 March 2025
Sector: Industry
Pages: i-ii; 1-15

In the fourth quarter of 2024, Botswana's Index of Mining Production dropped to 74.0, down 27.3 percent year-on-year from 101.8 in Q4 2023, mainly due to a 30.5 percent fall in diamond output, which contributed -26.7 percentage points to the decline. Coal and salt production rose slightly, while copper

and silver output decreased. On a quarterly basis, mining activity improved 3.5 percent from Q3 2024. Overall, the annual index averaged 77.5, reflecting a 24.9 percent decline from 2023, driven largely by weaker diamond production despite modest growth in coal and industrial minerals.

<https://www.statsbots.org.bw/sites/default/files/publications/Index%20of%20the%20Physical%20Volume%20of%20Mining%20Production%2C%20Fourth%20Quarter%202024%20Stats%20Brief.pdf>



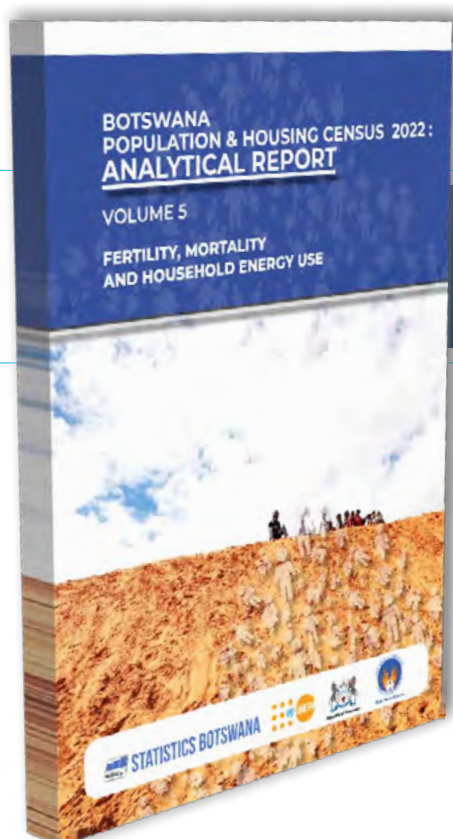
PUBLIC HEALTH PERSONNEL 2023

Periodicity:	Annual
Published:	20 March 2025
Sector:	Health
Pages:	1-14

This report describes the size and distribution of the public sector health workers in Botswana in 2023. The report does not include Armed Forces, Non-governmental Organisations (NGO's); Faith Based Organisations (FBO's) and Private facilities. The report describes the number of health workers, their distribution and their skills-mix in Botswana. The data used is solely from the Ministry of Health Establishment register. Data at district level might not be a true reflection of what is on the ground because of consistent transfers and

the need for assisting other districts when need arise hence disaggregation at district level was not used. The number of public health workers in Botswana decreased by 6.1 percent between 2022 and 2023, from 19,253 health workers in 2022 to 18,079. From 2019 to 2021 an increase in the number of health workers was observed with a peak in 2021, thereafter a decline was observed. In all the years number of females greatly outnumbered males.

<https://www.statsbots.org.bw/sites/default/files/PUBLIC%20HEALTH%20PERSONNEL%202025.pdf>



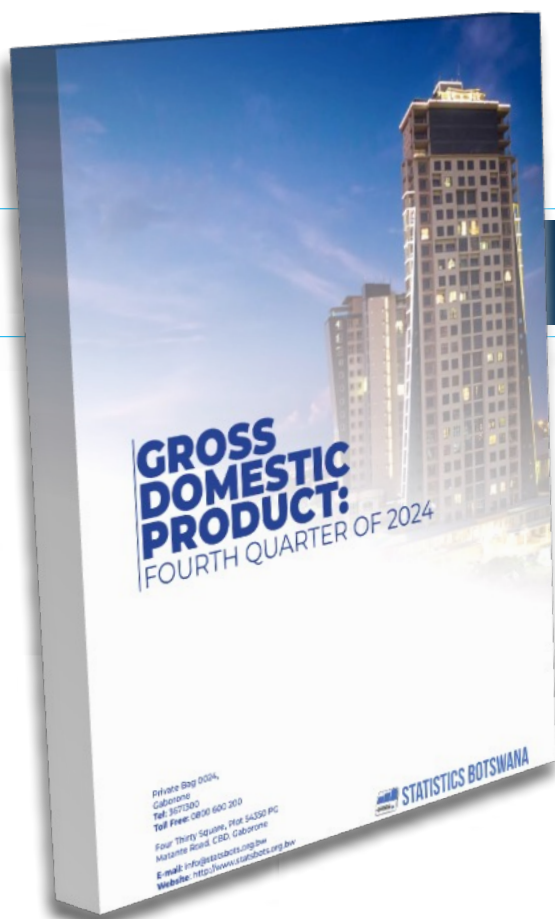
BOTSWANA POPULATION & HOUSING CENSUS 2022: ANALYTICAL REPORT VOLUME 5 FERTILITY, MORTALITY AND HOUSEHOLD ENERGY USE

Periodicity:	Decennial
Published:	14 March 2025
Sector:	Demography
Pages:	i-iii; 1-16

Data from the previous censuses show that fertility has been declining since the 1980s. The total fertility rate (TFR) was 6.6 children per woman in 1981 and decreased to 4.2 in 1991, 3.3 in 2001, and 2.8 in 2011 and increased to 2.98 in 2022. Thus, fertility decline has been sustained since the 1980s. An analysis of the age-specific fertility rates (ASFRs)

shows a substantial decrease in 20–24-year-olds specifically between 2011 and 2022. However, age-specific fertility rates for the 15–19-year-olds show a rise, implying rising adolescent birth rates. All the other age-groups (25–29, 30–34, 35–39, 40–44 and 45–49) also showed an increase in the age-specific fertility rates from the years 2011 to 2022.

https://www.statsbots.org.bw/sites/default/files/census_documents/Botswana%20Population%20%26%20Housing%20Census%202022%20Analytical%20Report%20Volume%205%20Fertility%2C%20Mortality%20and%20Household%20Energy%20Use.pdf



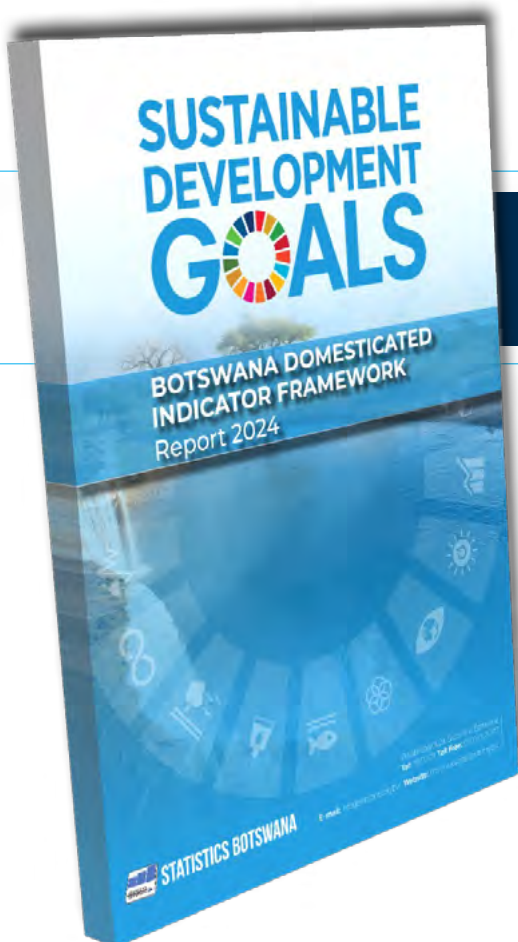
GROSS DOMESTIC PRODUCT QUARTER 4 2024

Periodicity:	Quarterly
Published:	31 March 2025
Sector:	National Accounts
Pages:	I; 1-37

The nominal Gross Domestic Product for the fourth quarter of 2024 was P64, 395.2 million compared to P65, 238.2 million registered during the previous quarter. This represents a quarterly decrease of 1.3 percent in nominal terms between the two periods. During the quarter under review, Public Administration and Defence

became the major contributor to GDP by 18.7 percent, followed by Wholesale & Retail Trade at 13.0 percent, Construction at 12.4 percent and Mining & Quarrying at 7.1 percent. Real GDP for the fourth quarter of 2024 decreased by 2.0 percent compared to the 2.3 percent growth registered in the same quarter of the previous year.

<https://statsbots.org.bw/sites/default/files/publications/GROSS%20DOMESTIC%20PRODUCT-%20%20FOURTH%20QUARTER%20OF%202024.pdf>



SUSTAINABLE DEVELOPMENT GOALS BOTSWANA DOMESTICATED INDICATOR FRAMEWORK REPORT 2024

Periodicity:	Annual
Published:	28-Apr-25
Pages:	i-vi; 1-83
ISBN:	978-99968-918-6-1 (Paperback) 978-99968-918-7-8 (E-Book)

The 2024 Sustainable Development Goals (SDG) Indicator Statistical Report provides a rigorous and comprehensive analysis of Botswana's advancement towards the 2030 Agenda. The report features 131 key indicators, revealing that 54% are fully disaggregated, while 46% lack the necessary granularity. This disparity highlights the imperative to address challenges associated with granular data provision. Disaggregation is essential for exposing inequalities and ensuring

inclusive development. Achieving this requires the harmonization of methodologies, including the adoption of standardized definitions and frameworks. This report plays a pivotal role in promoting harmonization within Botswana by aligning national methodologies with international standards, thereby enhancing data consistency and comparability, and supporting evidence-based policymaking.

https://www.statsbots.org.bw/sites/default/files/special_documents/SDG%20AGENDA%202030%20STATISTICS%20REPORT%202024_%20%28003%29%20%28002%29.pdf



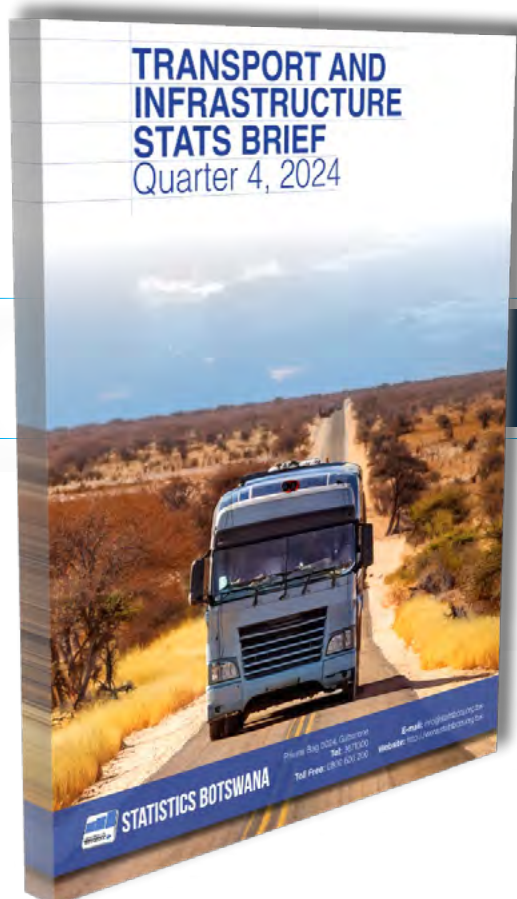
BOTSWANA CAUSES OF MORTALITY 2022 ANNUAL REPORT

Periodicity:	Annual
Published:	29-Apr-25
Sector:	Health Statistics
Pages:	i-vi; 1-57

In 2022, Botswana registered 13,740 deaths a decrease of 21.9 percent, from 17,589 deaths reported in 2021. The highest proportions were registered from Gaborone (17.6%), Francistown (9.9%), and Kweneng East (9.9%) Health Districts. Male deaths (52.2%) slightly outnumbered female deaths (47.8%), with significant variation across districts. Deaths were highest among those aged 85+. There was no major seasonal variation with number of deaths ranging from 1,000 to 1,300 deaths reported per month.

Leading Causes of Death: Among the leading causes of deaths, Certain Infectious and Parasitic Diseases (12.6%) remained the predominant cause of death, followed by Diseases of the Circulatory System (12.5%) and Neoplasms (12%). Deaths due to COVID-19 declined significantly from 2021 with HIV/AIDS becoming the leading cause of death in 2022. Sex differences revealed variations in the leading causes, with HIV/AIDS being a prominent factor for both males and females.

<https://www.statsbots.org.bw/sites/default/files/Botswana%20Causes%20of%20Mortality%202022%20Annual%20Report.pdf>



TRANSPORT & INFRASTRUCTURE STATS BRIEF -Q4 2024

Periodicity: Quarterly

Published: 30-Apr-25

Sector: Transport & Infrastructure Statistics

Pages: 1-33

This Stats Brief presents a summary of the latest Transport and Infrastructure Statistics for Quarter 4 2024. It covers Motor Vehicle Registrations, Rail, and Air Transport statistics. A total of 13,244 vehicles were registered for the first time during this quarter. Of these, 76.7 and 23.1 percent were used vehicles and brand new vehicles respectively, while 0.1 percent were rebuilt vehicles. Goods transported through rail this quarter stood at 259,160 net tonnes, a

decrease of 3.7 percent when compared to the previous quarter. An amount of P65.5 million was generated from the transportation of these goods. During this quarter, a total of 17,706 aircraft movements were recorded and 79.3 percent of them were domestic while 20.7 percent were international movements. There were 210,815 passenger movements recorded, an increase of 17.4 percent when compared to the previous quarter.

<https://www.statsbots.org.bw/sites/default/files/publications/Transport%20%20Infrastructure%20Stats%20Brief%20Q4%202024.pdf>



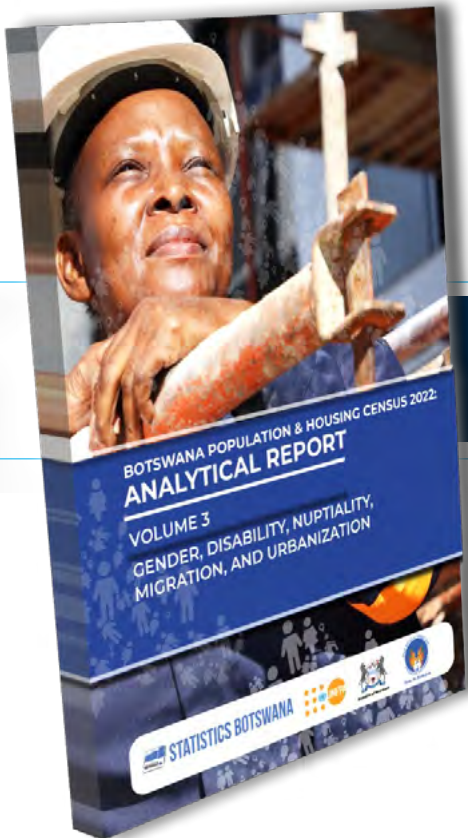
BOTSWANA CONSUMER PRICE INDEX 2024 IN REVIEW

Periodicity: Annual
Published: 06-May-25
Sector: Prices Statistics
Pages: i-iii; 1-13

This Statistical Brief provides a summary of Botswana Consumer Price Indices (CPI) and inflation rates for the year 2024. The average annual inflation rate stood at 2.8 percent in 2024, a decline of 2.4 percentage points from the 5.2 percent registered in 2023. This outcome placed

the 2024 inflation rate below the lower bound of the Bank of Botswana's target range of 3 – 6 percent. The moderation in the average inflation rate was primarily driven by restrained price increases across all major consumption categories, with the exception of the Alcohol and Tobacco group.

<https://www.statsbots.org.bw/sites/default/files/Botswana%20Consumer%20Price%20Index%202024%20In%20Review.pdf>



BOTSWANA POPULATION & HOUSING CENSUS 2022:
ANALYTICAL REPORT VOLUME 3, GENDER, DISABILITY,
NUPTIALITY, MIGRATION, AND URBANIZATION

Periodicity:	Decennial
Published:	14-May-25
Sector:	Demography
Pages:	i-iii; 1-246
ISBN:	978-99968-918-2-3 (Paperback) 978-99968-918-3-0 (E-Book)

Key findings indicate that Botswana's population is growing at a diminishing rate, with the gender ratio nearing equilibrium. However, the population distribution is in such that males dominate districts that are synonymous with key economic activities such as mining, tourism, and beef. Gender

equality has generally improved, particularly within the targeted cohort compared to previous generations. However, the education sector shows signs of reverse gender inequality, and economic participation remains uneven, with females still underrepresented in certain fields

<https://www.statsbots.org.bw/sites/default/files/publications/Botswana%20Population%2026%20Housing%20Census%202022-Analytical%20Report%20Volume%203%2C%20Gender%2C%20Disability%2C%20Nuptiality%2C%20Migration%20and%20%20Urbanization.pdf>



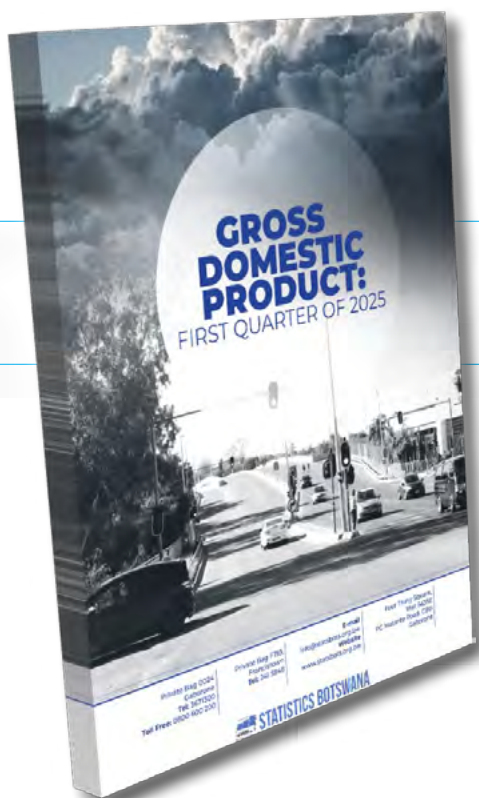
VITAL STATISTICS REPORT 2023

Periodicity:	Annual
Published:	28-May-25
Sector:	Vital Statistics
Pages:	i-ix; 1-64
ISBN:	978-99968-918-3-0 (Paperback) 978-99968-918-4-7 (E-Book)

In 2023 there were 53,613 births registered, which includes both births from 2023 as well as those from previous years that were registered in 2023. A total of 46,352 live births and 759 stillbirths that occurred in 2023 were recorded, providing key insights into maternal and child health. In 2023, the total number of marriages recorded was 4,789, representing the formal union of individuals within the population of 2,392,644. The marriage rate for the year was 1.9 per 1,000 population, offering insight into the frequency of marriages within the overall population. The mortality indicators for the population reveal important insights into public health. There were a total of

13,694 deaths, with a Crude Death Rate of 5.7 per 1,000 population, suggesting a moderate level of overall mortality. Infant Mortality stands at 21.9 deaths per 1,000 live births, while Neo-Natal Mortality is 12.7 per 1,000 live births, indicating areas for improvement in early-life healthcare. Additionally, Under-5 Mortality is also 28.4 per 1,000 live births, emphasizing the need for enhanced healthcare for young children. Life expectancy at birth is 70 years for males and 76 years for females, reflecting a gender gap in longevity. The Death Registration rate is at 79.1 Percent, reflecting a significant portion of deaths being officially recorded, though there may still be room for further improvements in data completeness.

https://www.statsbots.org.bw/sites/default/files/Vital%20Statistics%20Report%202023_0.pdf



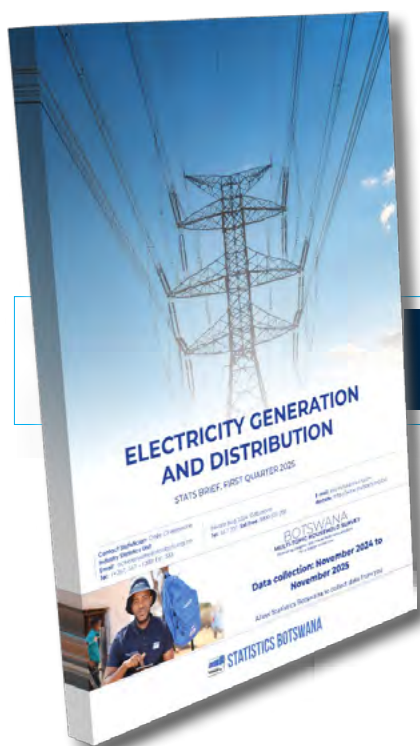
GROSS DOMESTIC PRODUCT: QUARTER 1 2025

Periodicity:	Quarterly
Published:	30-Jun-25
Sector:	National Accounts
Pages:	1-35

The nominal Gross Domestic Product for the first quarter of 2025 was P69, 368.3 million compared to P64, 412.7 million registered during the previous quarter. This represents a quarterly

increase of 7.7 percent in nominal terms between the two periods. During the quarter under review, Public Administration and Defense became the major contributor to GDP by 17.4 percent, followed by Mining & Quarrying at 14.4 percent.

<https://www.statsbots.org.bw/sites/default/files/publications/Gross%20Domestic%20Product%20-%20%20First%20Quarter%20of%202025.pdf>



ELECTRICITY GENERATION AND DISTRIBUTION STATS BRIEF, QUARTER 1 2025

Periodicity:	Quarterly
Published:	30-Jun-25
Sector:	Industry
Pages:	1-15

During the first quarter of 2025, the Index of Electricity Generation (IEG) stood at 124.2, representing a year-on-year decrease of 34.0 current quarter.

percent from the 188.2 recorded in the same quarter of 2024. On a quarterly basis, the index decreased by 38.6 percent, from 202.2 during the fourth quarter of 2024 to 124.2 during the

<https://www.statsbots.org.bw/sites/default/files/Electricity%20Generation%20and%20Distribution%20Stats%20Brief%2C-First%20Quarter%202025.pdf>



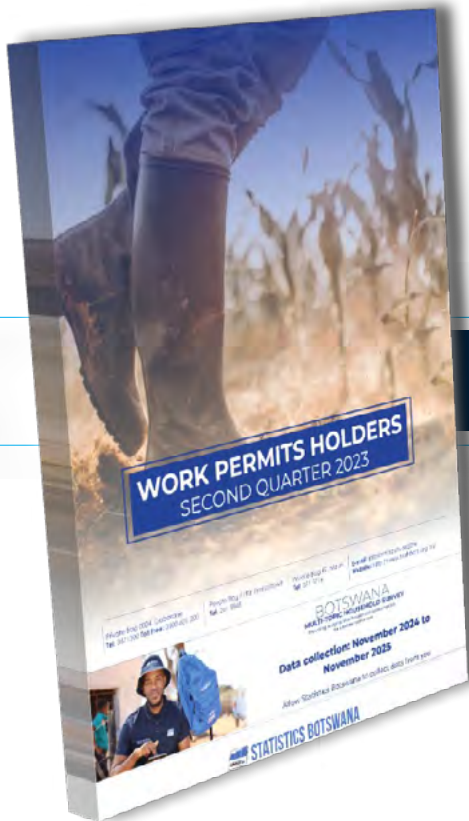
INDEX OF THE PHYSICAL VOLUME OF MINING PRODUCTION QUARTER 1 2025

Periodicity:	Quarterly
Published:	30-Jun-25
Sector:	Industry Statistics
Pages:	i-ii; 1-15

This statistical release presents the quarterly Indices of Mining Production (IMP) for the period 2015 through the first quarter of 2025. The Index of Mining Production stood at 77.2 in the first quarter of 2025 compared to 84.9

registered in the corresponding quarter of 2024, showing a year-on-year decrease of 9.0 percent. On a quarter-on-quarter comparison, the index increased by 4.3 percent from 74.0 recorded during the fourth quarter of 2024.

<https://www.statsbots.org.bw/sites/default/files/index%20of%20the%20physical%20volume%20of%20mining%20production%20first%20quarter%202025.pdf>



WORK PERMITS HOLDERS SECOND QUARTER 2023

Periodicity:	Quarterly
Published:	10-Jul-25
Sector:	Labour Statistics
Pages:	1-15

The results presented in this brief show a decrease in work permit holders from 4,851 in March 2023 to 4,319 in June 2023, a decrease of 11.0 percent. The Agricultural sector continues to record the majority of work permit holders with

28.8 percent followed by Education with 19.5 percent. Work permit holders by age group showed that overall, the majority of work permit holders fell in the age group 40-44 years at 16.7 percent, followed by age groups 45-49 and 35-39 recording 15.7 percent and

<https://www.statsbots.org.bw/sites/default/files/publications/Work%20Permits%20Holders%20Third%20Quarter%202023.pdf>



**BOTSWANA POPULATION AND HOUSING CENSUS 2022:
ANALYTICAL REPORT VOLUME 2,
HOUSEHOLD CHARACTERISTICS, ECONOMIC ACTIVITY**

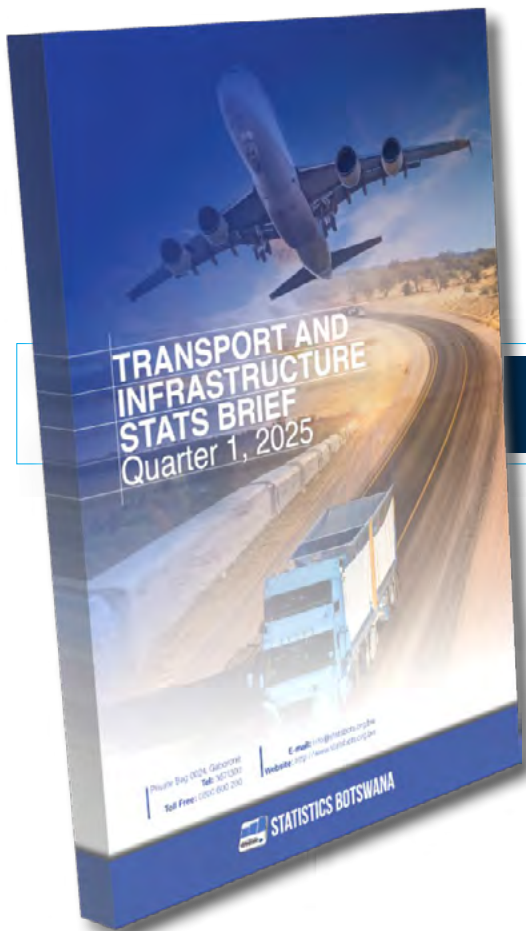
Periodicity:	Decennial
Published:	24-Jul-25
Sector:	Demography
Pages:	i-ii; 1-244
ISBN:	978-99968-906-9-7 (Paperback) 978-99968-918-1-6 (E-Book)

15.4 percent respectfully.

The results showed that 695, 703 households were surveyed. Of these, about 65.67% undertook agricultural activities, predominantly for household use. This percentage is much higher than the one recorded in South Africa where less than 20% of households were participating in agricultural activities (David and Grobler, 2019). This discrepancy might be because South Africa

is more developed than Botswana, therefore her people have other activities that they participate in to live. Most of the household heads were male (55.0%), predominantly in the 30 to 39 years age group. The results are consistent with 2011 Botswana census data where more male-headed households were reported to be participating in agricultural activities than female headed households.

<https://www.statsbots.org.bw/sites/default/files/publications/Population%20and%20Housing%20Census%202022-%20%20Analytical%20Report%20Volume%202%20Household%20Characteristics%20Economic%20Activity.pdf>



TRANSPORT AND INFRASTRUCTURE STATS BRIEF QUARTER 1, 2025

Periodicity:	Quarterly
Published:	31-Jul-25
Sector:	Transport and Infrastructure
Pages:	1-25

This Stats Brief presents a summary of the latest Transport and Infrastructure Statistics for Quarter 1 2025. It covers Motor Vehicle Registrations, Rail, and Air Transport statistics. During Q1 2025, a total of 11,583 motor vehicles were registered for the first time, of which 71.6 percent were passenger cars. Used vehicles made up 77.4 percent of the vehicles registered for the first time, while brand new and re-built vehicles constituted 22.4 and 0.2 percent respectively.

Goods transported through rail decreased by 24.1 percent in Q1 2025, from 259,160 tonnes transported in Q4 2024 to 196,637 tonnes. A total of P47.5 million in revenue was generated, which was a decrease of 27.5 percent from P65.5 million realised in Q4 2024. Aircraft movements declined by 22.4 percent Q1 2025. Domestic aircraft movements constituted 76.8 percent of the total, while international movements made up 23.2 percent. Air passenger movements declined as well in Q1 2025; international movements decreased by 17.5 percent while domestic movements declined by 23.4 percent.

<https://www.statsbots.org.bw/sites/default/files/Transport%20and%20Infrastructure%20Stats%20Brief%20Quarter%201%2C%202025.pdf>



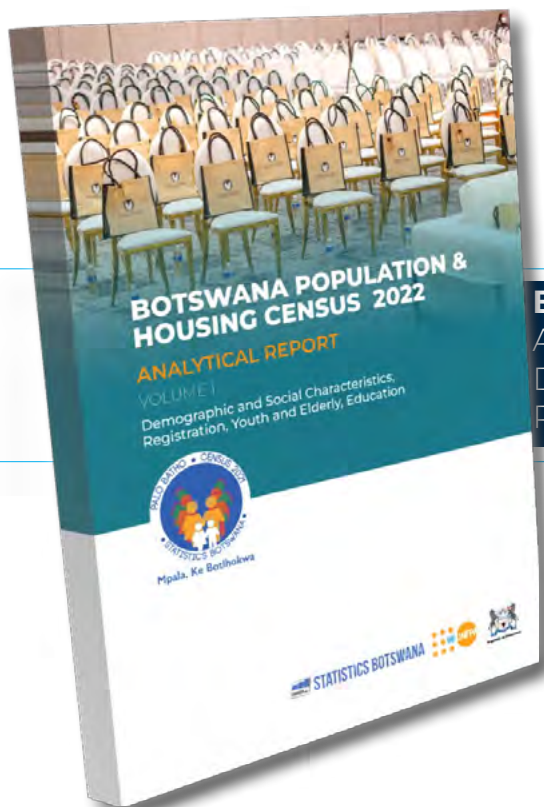
EMPLOYMENT IN THE TOURISM INDUSTRIES STATS BRIEF 2024

Periodicity:	Adhoc
Published:	06-Aug-25
Sector:	Tourism Statistics
Pages:	i-iv; 1-15

In 2024, Botswana's total employment stood at 754,147 persons, as estimated by the Quarterly Multi-Topic Household Survey. Of this total, an estimated 50,535 persons (6.7 percent) were employed in tourism-related industries. Of the total employed in these industries the majority, 21.3 percent (10,746) were aged between 25 and

29 years, while 48.2 percent were female. Persons employed in the rural-areas were estimated to be the highest wage earners in the Transport and Storage industry, with an average wage of P12, 608 and in the Arts, Entertainment and Recreation sector with an average earning of P3, 318.

<https://statsbots.org.bw/sites/default/files/publications/Employment%20In%20The%20Tourism%20Industries%20Stats%20Brief%202024.pdf>



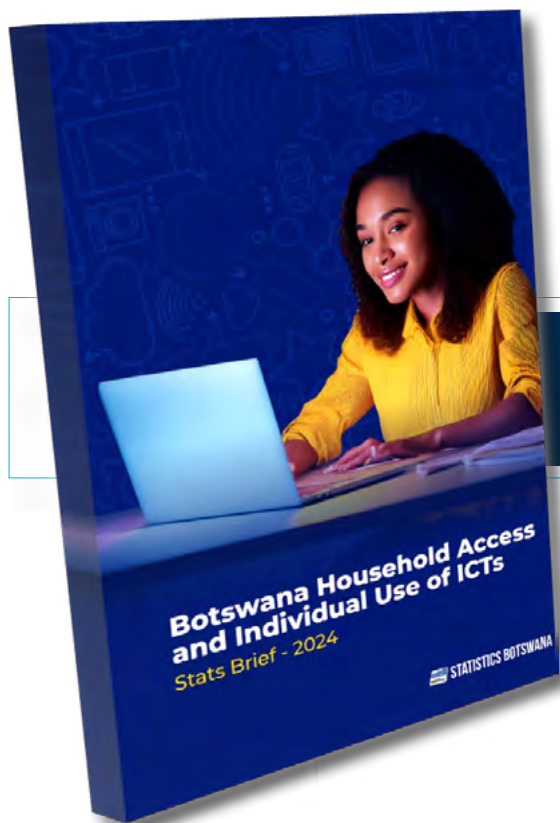
BOTSWANA POPULATION & HOUSING CENSUS 2022-
ANALYTICAL REPORT VOLUME 1:
DEMOGRAPHICS & SOCIAL CHARACTERISTICS,
REGISTRATION, YOUTH, ELDERLY AND EDUCATION

Periodicity:	Decennial
Published:	11-Aug-25
Sector:	Demography
Pages:	1-167
ISBN:	978-99968-906-4-2 (Paperback) 978-99968-906-5-9 (E/Book)

Botswana's demographic landscape reveals an almost balanced sex ratio, with nearly equal numbers of males and females. The reported sex ratio of 95.2 suggests that there are 95.2 men for every 100 women. The population is relatively youthful, with 31.6 percent below the age of fifteen, and an additional 30 percent aged up to 35. This suggests a vibrant and potentially growing society, but also

highlights the importance of investing in education, healthcare, and employment opportunities to support this youthful demographic. However, the proportion of older adults, aged 65 and above, remains relatively low at six percent, indicating potential challenges for elderly care and support systems in the future

<https://www.statsbots.org.bw/sites/default/files/Botswana%20Population%20%26%20Housing%20Census%202022%20Analytical%20Report%20Volume%201.pdf>



BOTSWANA HOUSEHOLD ACCESS AND INDIVIDUAL USE OF ICTS

STATS BRIEF - 2024

Periodicity:	Quinquennial
Published:	15-Aug-25
Sector:	ICT Statistics
Pages:	i; 1-139
ISBN:	978-99968-914-3-4 (Paperback) 978-99968-914-4-1 (E-Book)

The majority of households (68.9 percent) had access to internet in 2024, up by 28.3 percentage points from the proportion recorded in 2014. The proportion of households with access to the internet at home, has been steadily increasing over the years. Household internet access was mainly through a Mobile Broadband Network via a Handset (86.1 percent); Looking at internet access on a regional basis, household internet connectivity was highest in Urban areas

(79.2 percent), compared with Rural areas (20.8 percent). Male headed households with internet made up 52.2 percent while Female headed ones made up 47.8 percent of all households. With respect to Household Size, one-person households made up 32.3 percent of all households with internet followed by two-person and three-person households at 19.5 and 16.0 percent respectively.

<https://www.statsbots.org.bw/sites/default/files/publications/Botswana%20Household%20Access%20and%20Individual%20Use%20of%20ICT%27s%20Stats%20Brief%202024.pdf>



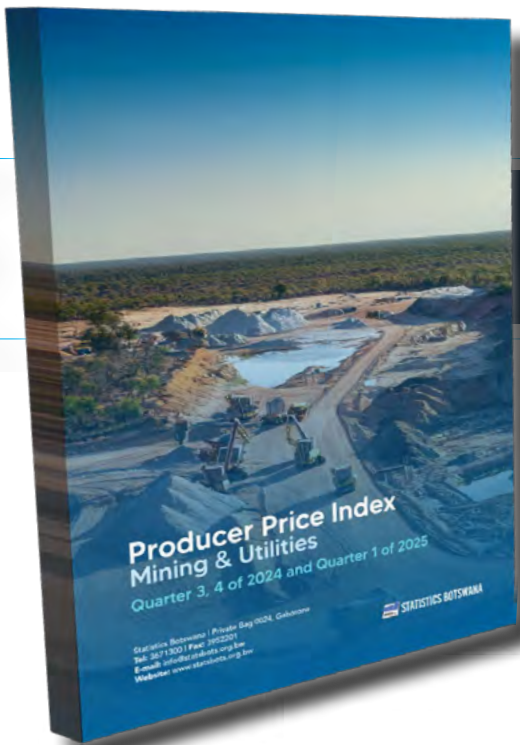
MARRIAGE STATISTICS BRIEF 2024

Periodicity:	Annual
Published:	15-Aug-25
Sector:	Vital Statistics
Pages:	i-ii; 1-14

The data indicate a downward trend in the number of registered marriages over the past ten years. After reaching a peak of 7,631 in 2021, the number of marriages declined steadily to 4,517 in 2024, representing the lowest level recorded during the decade. This reflects a 41% decrease compared to the 2021 figure. The statistics further show that most marriages were contracted between partners residing

within the same district. Gaborone recorded the highest number of such marriages at 511, followed by Kweneng East with 473 and Ngamiland East with 217. Notably, 32.1% of all marriages involved partners from different districts. Among these inter-district unions, Gaborone again recorded the highest number at 202, closely followed by Kweneng East with 192.

<https://www.statsbots.org.bw/sites/default/files/Marriage%20Statistics%20Brief%202024.pdf>



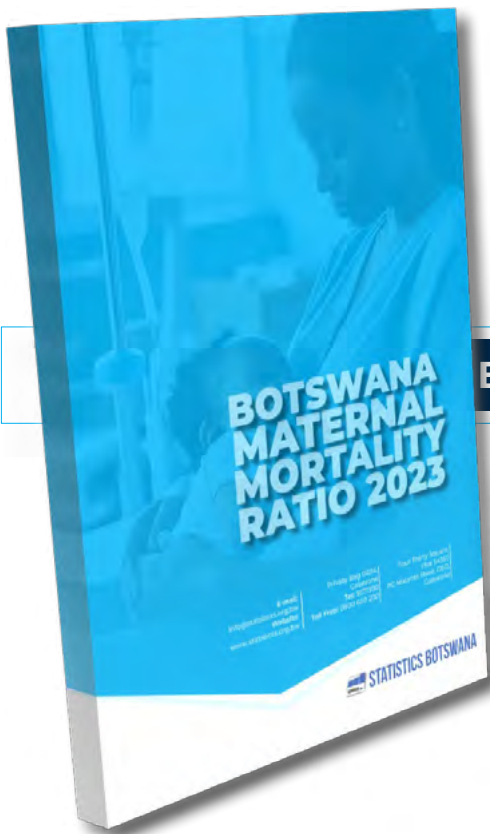
PRODUCER PRICE INDEX (MINING & UTILITIES) QUARTER 3, 4 OF 2024 AND QUARTER 1 OF 2025

Periodicity:	Quarterly
Published:	26-Aug-25
Sector:	Prices
Pages:	1-9

The Mining Producer Price annual Inflation was 13.8 percent in quarter three of 2024, an increase of 2.2 percentage points compared to 11.6 percent recorded in quarter two of 2024. In quarter four of 2024, the inflation fell by 27.8 percentage points from 13.8 percent in quarter three of 2024 to -14.0 percent

in quarter four of 2024. The Mining Producer Price annual inflation further declined by 18.9 percentage points in quarter one of 2025, from -14.0 percent in quarter four of 2024 to -32.9 in quarter one of 2025.

<https://www.statsbots.org.bw/sites/default/files/publications/Producer%20Price%20Index%20%28Mining%20%26%20Utilities%29%20Quarter%203%2C4%20of%202024%20and%20Quarter%20%201%20of%202025.pdf>



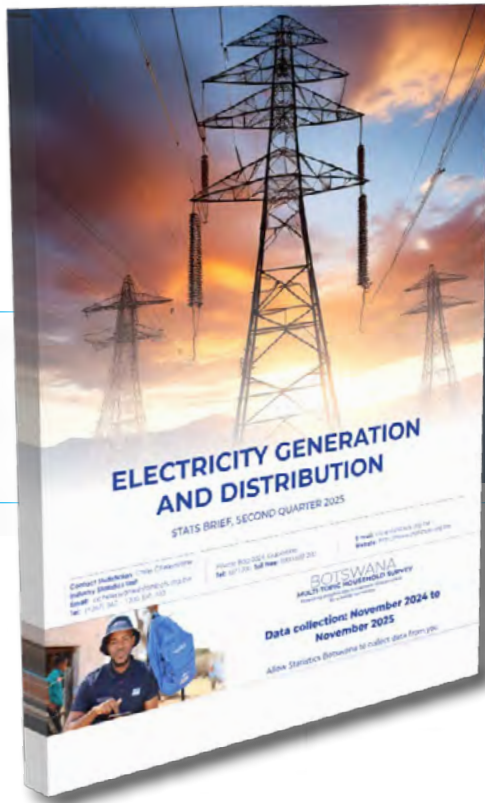
BOTSWANA MATERNAL MORTALITY RATIO 2023

Periodicity:	Annual
Published:	11-Sept-25
Sector:	Health Statistics
Pages:	i-iv; 1-13

The brief shows that 88 maternal deaths were reported in 2023 from 49,816 live births, yielding a Maternal Mortality Ratio (MMR) of 176.7 maternal deaths per 100,000 live births. Over the years, there has been a fluctuating trend in the Maternal Mortality Ratio (MMR), ranging from 127 deaths per 100,000 live births (lowest) in 2015 to 240 deaths per 100,000 live births (highest) in 2021. This

indicates that the country is yet to reach the 70 deaths per 100,000 live births SDG target set by the World Health Organization (WHO). We continue to observe a high number of mothers giving birth in health facilities. The brief shows that 99.8 percent of all births are estimated to have occurred in health facilities supervised by a skilled health professional.

<https://www.statsbots.org.bw/sites/default/files/Botswana%20Maternal%20Mortality%20Ratio%202023.pdf>



INDEX OF THE PHYSICAL VOLUME OF MINING PRODUCTION, SECOND QUARTER 2025 STATS BRIEF

Periodicity:	Quarterly
Published:	26-Sept-25
Sector:	Industry Statistics
Pages:	i-ii; 1-14

The Index of Mining Production stood at 52.0 in the second quarter of 2025 compared to 79.4 registered in the corresponding quarter of 2024, showing a year-on-year decline of 34.6 percent. On a quarter-on-quarter comparison, the index declined by 32.7 percent from 77.2 recorded

during the first quarter of 2025. The release further shows the contribution of each mineral and mineral group to the Year-on-Year Percentage Change in the Volume of Mining Production, and provides the trend in the local mining sector.

<https://www.statsbots.org.bw/sites/default/files/Index%20of%20the%20Physical%20Volume%20of%20Mining%20Production%20Second%20Quarter%202025.pdf>



GROSS DOMESTIC PRODUCT - SECOND QUARTER OF 2025

Periodicity:	Quarterly
Published:	26-Sept-25
Sector:	National Accounts Statistics
Pages:	i-ii, 1-37

The nominal Gross Domestic Product for the second quarter of 2025 was P69, 620.9 million compared to a revised P65, 284.3 million registered during the previous quarter. This represents a quarterly increase of 6.6 percent in nominal terms between the two periods. During the quarter under review, Public Administration and Defense became the major contributor to

GDP by 18.2 percent, followed by Wholesale & Retail Trade and Mining & Quarrying at 12.3 and 11.9 percent respectively. Real GDP for the second quarter of 2025 decreased by 5.3 percent compared to the 0.4 percent decline registered in the same quarter of the previous year.

<https://www.statsbots.org.bw/sites/default/files/publications/Gross%20Domestic%20Product-%20Second%20Quarter%20of%202025.pdf>



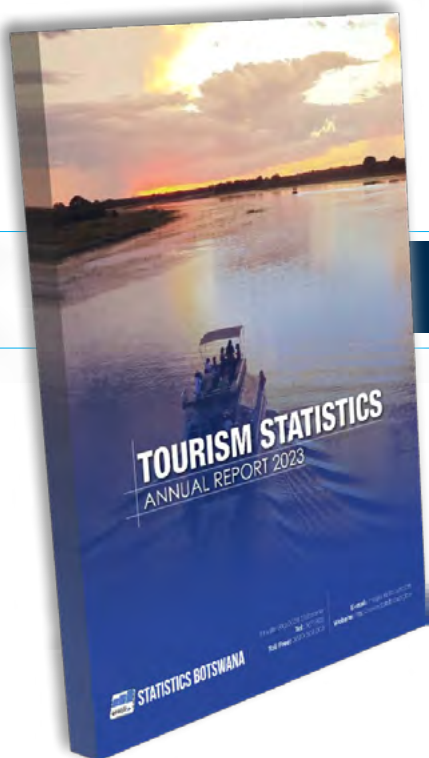
BOTSWANA CAUSES OF MORTALITY 2023 ANNUAL REPORT

Periodicity:	Annual
Published:	26-Sept-25
Sector:	Health Statistics
Pages:	i-iv; 1-33

Botswana registered 13,508 deaths, a decrease of 1.7 percent from 13,740 deaths reported in 2022. The highest proportion was registered from Gaborone (18.1%), Francistown (10.9%), and Kweneng East (9.2%) Health Districts. Male deaths (52.8%) slightly outnumbered female deaths (47.2%), with variation across districts. There was a relatively high number of deaths among under-

fives (10.7%), with the highest number of deaths reported among those aged 85+ (11.4%). In the 85+ age group, female deaths were twice as much as male deaths. There was no major seasonal variation with the number of deaths ranging from 1,000 to 1,300 deaths reported per month. More than half (55.2%) of deaths were institutional deaths.

<https://www.statsbots.org.bw/sites/default/files/publications/Botswana%20Causes%20of%20Mortality%2C2023%20Annual%20Report.pdf>



TOURISM STATISTICS ANNUAL REPORT 2023

Periodicity:	Annual
Published:	09-Oct-25
Sector:	Tourism Statistics
Pages:	i-iv; 1-69
ISBN:	978-99968-914-8-9 (Paperback) 978-99968-914-9-6 (E-Book)

The year 2023 marked a pivotal phase of recovery for Botswana's tourism sector, as it was the first full year in which nearly all ports of entry and exit operated following the relaxation of COVID-19 restrictions. During the year, a total of 1,874,766 non-citizen arrivals and 1,908,139 departures were recorded. Of the arrivals, 1,182,979 were international visitors (tourists), accounting for 63.1 percent of all non-citizen arrivals. Tourists comprised both overnight and same-day visitors,

with overnight stays dominating at 92.9 percent (1,099,113), while same-day visits represented 7.1 percent (83,866). South Africa emerged as the leading source market, contributing 33.3 percent (394,059) of all tourists, followed by Zimbabwe at 22.2 percent (262,920). Visitors from the top ten overseas countries accounted for 16.8 percent (198,615), while visitors from the top ten SADC countries together represented 77.1 percent (912,260).

https://www.statsbots.org.bw/sites/default/files/Tourism%20Statistics%20Annual%20Report%202023_0.pdf



BOTSWANA HOSPITAL IN-PATIENT DISCHARGE MORBIDITY REPORT 2021 ANNUAL REPORT

Periodicity:	Annual
Published:	15-Oct-25
Sector:	Health Statistics
Pages:	i-iv; 1-64
ISBN:	978-99968-23-0 (Paperback) 978-99968-77-29-2 (-eBook)

General Hospitals, Primary Hospitals, and Clinics record and report their service delivery activities. Over the past ten years, inpatient admissions have been fluctuating. Admissions in 2021 dropped by 9.5 percent from the 173,871 cases recorded in 2020. The percentage of patients who died while admitted

has consistently been going down from 3.1 percent in 2017 to 2.3 percent in 2020. However, in 2021, there was an increase in the proportion of inpatient deaths, which can be attributed to a surge in deaths due to COVID-19.

<https://www.statsbots.org.bw/sites/default/files/Botswana%20Hospital%20In%20-Patient%20Discharge%20Morbidity%20Report%202021%20Annual%20Report.pdf> <https://www.statsbots.org.bw/sites/default/files/Botswana%20Hospital%20In%20-Patient%20Discharge%20Morbidity%20Report%202021%20Annual%20Report.pdf>



TRANSPORT AND INFRASTRUCTURE STATS BRIEF QUARTER 2, 2025

Periodicity:	Quarterly
Published:	17-Oct-25
Sector:	Transport and Infrastructure
Pages:	1-25

A total of 11,296 motor vehicles on first registration was recorded in Q2 2025, a 2.5 percent decline from the previous quarter. Of these, 77.3 percent were used vehicles, 22.6 percent brand new and 0.1 percent rebuilt motor vehicles. A 9.3 percent increase was realised in the volume of goods transported through rail from 196,637 net tonnes transported in the previous quarter to 214,814 net

tonnes in Q2 2025. An amount of P53.2 million was generated from the transportation of those goods. A total of 23,903 aircraft movements were recorded this quarter, 80.4 percent of them being domestic and 19.6 percent being international. Air passenger movements in this quarter registered an increase of 44.7 percent from 168,933 in the previous quarter to 244,424 movements

https://www.statsbots.org.bw/sites/default/files/Transport%20and%20Infrastructure%20Stats%20Brief%20Quarter%202%2C2025_0.pdf



BOTSWANA INFORMATION & COMMUNICATION TECHNOLOGY

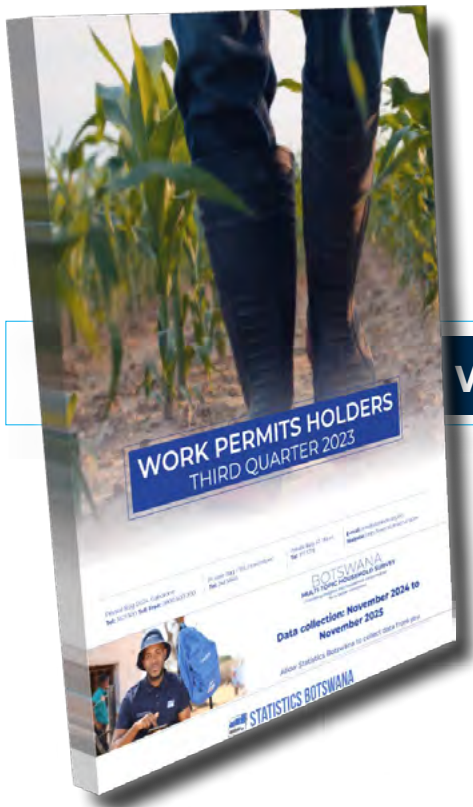
STATS BRIEF , QUARTER 1 2025

Periodicity:	Quarterly
Published:	24-Oct-25
Sector:	ICT Statistics
Pages:	1-15

This Stats Brief presents Botswana Information and Communication Technology Statistics for Q1 2025. It contains statistics relating to ICT infrastructure and services, as well as the contribution of Information and Communication Technology Sector to the economy. Fixed telephone line subscriptions increased by 0.1 percent in Q1 2025, from 83,182 in Q4 2024 to 83,228 in Q1 2025. Mobile cellular telephone subscriptions went up by 1.5 percent from 4,134,666 in Q4 2024 to 4,195,416 in Q1 2025. Internet subscriptions stood

at 3,178,217 in Q1 2025, registering a decline of 0.9 percent from 3,205,669 recorded in Q4 2024. Mobile money subscriptions also decreased by 0.7 percent in Q1 2025 from 1,195,601 registered in Q4 2024 to 1,187,241. The ICT sector's contribution to the economy in Q1 2025 stood at 2.8 percent of total GDP at current prices. At constant prices, the ICT sector realised an annual growth rate of 0.9 percent.

www.statsbots.org.bw/sites/default/files/Botswana%20Information%20%26%20Communication%20Technology%20Stats%20Brief%20Q1%202025.pdf



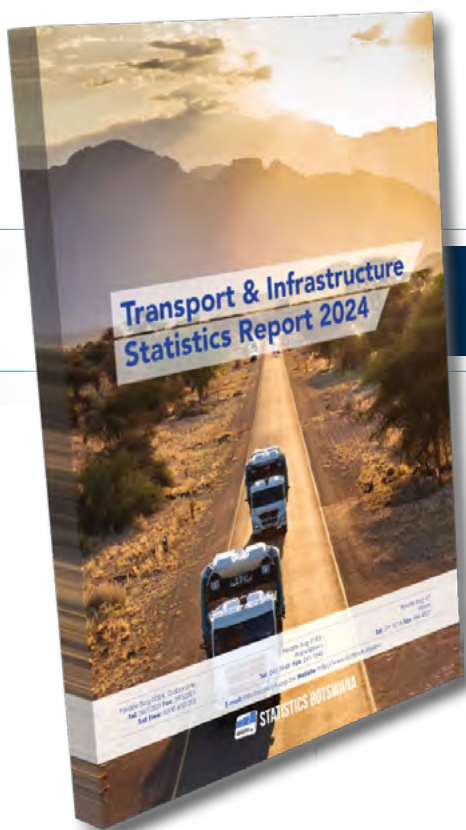
WORK PERMITS HOLDERS QUARTER 3 2023

Periodicity:	Quarterly
Published:	03-Nov-25
Sector:	Labour
Pages:	I; 1-14

There were 4,917 valid work permit holders as at end of September 2023. Among the work permit holders, Employed persons accounted for 82.2 percent (4,041), while Self-employed persons accounted for 17.8 percent (876). Overall, there were more male than female permit holders. Males accounted for 67.9 percent of the total work permit holders. Employee work permit holders consist of those holding new work permits and those whose

work permits have been renewed. During third Quarter, 2023 there were 2,923 new employee work permit holders, compared with 1,118 who held renewed permits. In both categories, males constituted a higher proportion of work permit holders. For the second quarter of 2023, there were 2,456 new employee work permit holders and 956 held renewed work permits.

<https://www.statsbots.org.bw/sites/default/files/publications/Work%20Permits%20Holders%20Third%20Quarter%202023.pdf>



TRANSPORT AND INFRASTRUCTURE STATISTICS REPORT 2024

Periodicity:	Annual
Published:	24-Nov-25
Sector:	Transport and Infrastructure Statistics
Pages:	i-iv; 1-41
ISBN:	978-99968-77-21-6 (Paperback) 978-99968-77-27-8 (eBook)

The road network in Botswana totaled 34,873.3 km in 2024. Of these, 53.1 percent were managed by the Central Government and 46.9 percent were under Local Authorities. There were 654,276 licensed vehicles in Botswana in 2024, which was an increase of 5.5 percent compared to 619,953 vehicles licensed in 2023. Out of this total, privately owned vehicles constituted 98.0 percent while government fleet made up 2.0 percent. An increase of 6.8 percent was realised in aircraft movements in 2024, from 69,900 movements in 2023 to 74,638. Domestic aircraft movements accounted for 79.8

percent of the total while international ones made up 20.2 percent. Passenger movements also increased in 2024, from 763,809 in 2023 to 852,150 - registering an increase of 11.6 percent. Of these, international movements made up 57.3 percent while domestic passenger movements constituted 42.7 percent. The volume of air cargo reduced in 2024. It went down from 1,496.0 tonnes transported in 2023 to 1,376.0 in 2024 and registered a fall of 8.0 percent.

<https://www.statsbots.org.bw/sites/default/files/publications/Transport%20and%20Infrastructure%20Statistics%20Report%202024.pdf>



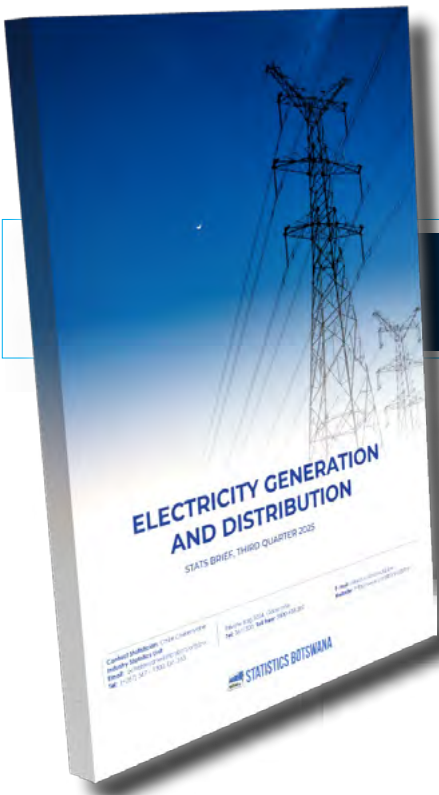
PRODUCER PRICE INDEX (MINING & UTILITIES) QUARTER 2 OF 2025

Periodicity: Quarterly
Published: 12-Nov-25
Sector: Prices Statistics
Pages: i-ii; 1-4

In the second quarter of 2025, the Mining Producer Price Index (PPI) was 118.4, representing a quarter on-quarter rise of 47.2 percent from the 80.4 registered in the first quarter of 2025. This rise was primarily driven by significant increase in the price indices of key

mining commodities: Diamond (51.0 percent), Quarry products (4.5 percent), and Coal (4.2 percent). The Mining Producer Price Annual Inflation for the second quarter of 2025 was -16.8 percent, an increase of 16.1 percentage points on the -32.9 percent recorded in quarter one of 2025.

<https://www.statsbots.org.bw/sites/default/files/publications/Producer%20Price%20Index%20%28Mining%20and%20Utilities%29%20Quarter%20%20Of%202025.pdf>



ELECTRICITY GENERATION AND DISTRIBUTION STATS BRIEF, THIRD QUARTER 2025

Periodicity:	Quarterly
Published:	19-Dec-25
Sector:	Industry Statistics
Pages:	1-15

During the third quarter of 2025, the Index of Electricity Generation (IEG) stood at 144.3, representing a year-on-year decrease of 38.6 percent from 235.1 recorded in the same quarter of 2024. On a quarterly basis, the index decreased by 4.5 percent, from 151.1 during the second quarter of 2025 to 144.3 during the current quarter.

<https://www.statsbots.org.bw/sites/default/files/Electricity%20Generation%20and%20Distribution%20Stats%20Brief%2CThird%20Quarter%202025.pdf>



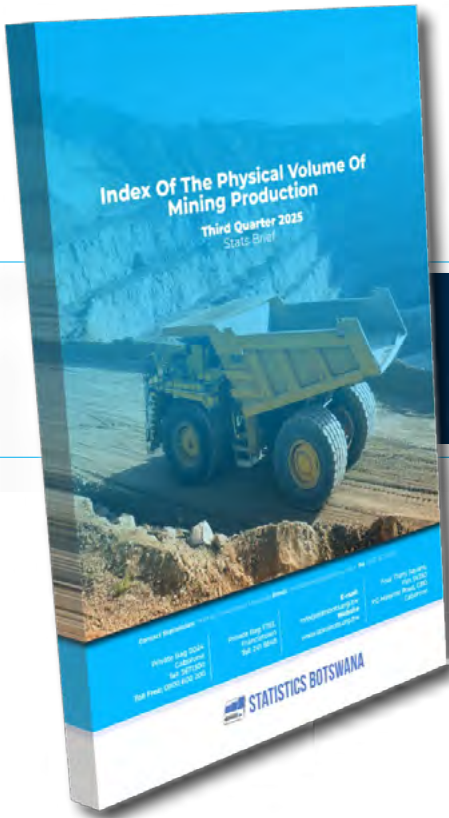
PRODUCER PRICE INDEX (MINING & UTILITIES) QUARTER 3 OF 2025

Periodicity:	Quarterly
Published:	19-Dec-25
Sector:	Prices Statistics
Pages:	i-ii; 1-4

In the third quarter of 2025, the Mining Producer Price Index (PPI) was 104.8, representing a quarter-on quarter decline of 11.5 percent from the 118.4 registered in the second quarter of 2025.

This decline was primarily driven by a significant decrease in the producer price indices of key mining commodities: Diamond by 12.1 percent, Soda Ash 4.4 percent, and Salt by 1.0 percent.

<https://www.statsbots.org.bw/sites/default/files/publications/Producer%20Price%20Index%20%28Mining%20and%20Utiliies%29Quarter%203%20of%202025.pdf>



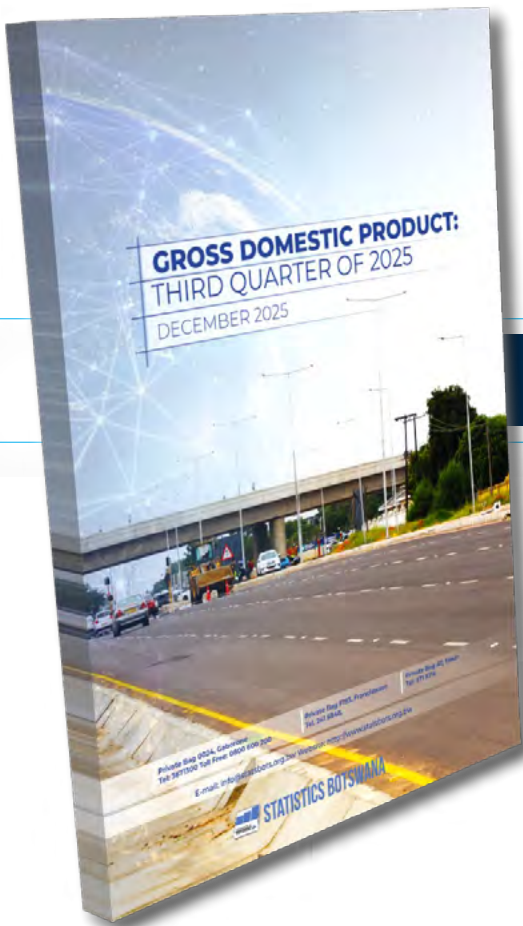
INDEX OF THE PHYSICAL VOLUME OF MINING PRODUCTION THIRD QUARTER 2025 STATS BRIEF

Periodicity:	Quarterly
Published:	19-Dec-25
Sector:	Industry Statistics
Pages:	i; 1-19

The Index of Mining Production stood at 98.3 in the third quarter of 2025 compared to 71.5 registered in the corresponding quarter of 2024, showing a year-on-year increase of 37.5 percent. On a quarter-on-

quarter comparison, the index increased by 89.2 percent from 52.0 recorded during the second quarter of 2025.

<https://www.statsbots.org.bw/sites/default/files/publications/Index%20of%20the%20Physical%20Volume%20of%20Mining%20Production%20Third%20Quarter%202025%20Stats%20Brief.pdf>



GROSS DOMESTIC PRODUCT Q3 2025

Periodicity:	Quarterly
Published:	19-Dec-25
Sector:	National Accounts
Pages:	i-ii; 1-51

GDP at constant 2016 prices for the third quarter of 2025 was P52, 981.1 million compared to the revised P47, 767.0 million recorded in the second quarter of 2025. (See table 3). Real Gross Domestic Product (GDP) increased by 8.2 percent during the period under review, compared to a contraction of 4.0 percent in the corresponding

quarter of 2024. This growth was driven by an increase in real value added of Diamond Traders (88.1 percent), Mining & Quarrying by (39.5 percent), Finance, Insurance & Pension Funding (5.2 percent), Transport and Storage (5.2 percent), and Accommodation & Food Services (4.6 percent).

<https://www.statsbots.org.bw/sites/default/files/Gross%20Domestic%20Product%20%20Q3%202025.pdf>



CONSUMER PRICE INDEX JANUARY –DECEMBER 2025

Periodicity:	Monthly
Published:	January-December 2025
Sector:	Prices Statistics
Pages:	18 Pages

In 2025, the average annual inflation rate was recorded at 2.7 percent. The major contributors to the 2025 average annual inflation rate were; Food & Non-Alcoholic Beverages (0.8 percentage points), Miscellaneous Goods & Services (0.8 of a percentage point), Alcoholic Beverages & Tobacco (0.3 of a percentage point), and Transport (0.3 percentage points). The Miscellaneous Goods

& Services group registered an annual average inflation rate of 8.0 percent followed by Alcoholic Beverages & Tobacco group with 7.8 percent while Food & Non-Alcoholic Beverages and Clothing & Footwear groups grew by 5.4 percent and 3.7 percent respectively over the year under review.

<https://www.statsbots.org/bw/prices-statistics>



INTERNATIONAL MERCHANDISE TRADE STATISTICS

JANUARY-DECEMBER 2025

Periodicity:	Monthly
Published:	January-December 2025
Sector:	Merchandise Trade Statistics
Pages:	i-v; 1-24

Overall imports slightly decreased from January to December 2025. Food & Beverages imports increased both in value and as a share of total imports.

<https://www.statsbots.org/bw/merchandise-trade-statistics>

Beverages, Spirits & Vinegar and Cereals remained the leading categories. Minor shifts occurred in contributions from other subcategories.



BOTSWANA FOOD IMPORTS JANUARY- DECEMBER 2025

Periodicity: Monthly
Published: January-December 2025
Sector: Merchandise Trade Statistics
Pages: 1-5

In November 2025, Botswana received imports valued at P1,314.4 million. In this amount, food & beverage imports amounted to P1,308.7 million, representing 17.8 percent of total imports. The top imports originated among food & beverage imports were Beverages, Spirits & Vinegar (Chapter 22) and Cereals (Chapter 10) with contribution of 16.7 percent and 13.7 percent, respectively. Preparations of cereals, flours, starch or milk, dairy crosse products (Chapter 19) and Miscellaneous edible preparations (Chapter 21) contributed 3.8 percent and 2.2 percent in the order.

Beverages, Spirits & Vinegar was the most prominent commodity imported. The leading imported products among the Beverages, Spirits & Vinegar are Beer made from malt (HS220200) and Other fermented beverages, of malted cereals (HS220200), respectively. Preparations of cereals, flours, starch or milk, dairy crosse products (Chapter 19) and Miscellaneous edible preparations (Chapter 21) contributed 3.8 percent and 2.2 percent, respectively. Other agricultural products (HS220200), and Mineral waters and aerated waters, containing added sugar or other sweetening matter or flavoured (HS220200) respectively, contributed 12.8 percent.

Cereals was the second dominant commodity group imported. The major imports of food products among cereals are Other Milled (cont.) (HS100500) and Semimilled or white milled rice, whether or polished or glazed (HS100500), accounting for 28.9 percent and 28.2 percent, respectively. Other wheat other than durum wheat (HS100100), followed with a contribution of 27.4 percent.

Table: Botswana Food (excluding live animals) imports - October and November 2025 (Million Pula)

HS Code	Description	November '25 (Current)	October '25 (Previous)	Change (%)
21	Preparations of cereals	500	510	-1.9
10	Cereals	150	140	7.1
19	Preparations of cereals, flours, starch or milk, dairy crosse products	350	340	2.9
22	Beverages, spirits & vinegar	210	200	5.0
23	Preparations of meat, fish or other animal products	100	110	-9.1
24	Preparations of vegetables, other than preparations of	80	70	14.3
25	Preparations of fruit or other vegetable products	70	60	16.7
26	Preparations of other foodstuffs	60	50	20.0
27	Preparations of other foodstuffs	50	40	25.0
28	Preparations of other foodstuffs	40	30	33.3
29	Preparations of other foodstuffs	30	20	50.0
30	Preparations of other foodstuffs	20	10	100.0
31	Preparations of other foodstuffs	10	5	100.0
32	Preparations of other foodstuffs	5	2	150.0
33	Preparations of other foodstuffs	2	1	100.0
34	Preparations of other foodstuffs	1	0	100.0
35	Preparations of other foodstuffs	0	0	100.0
36	Preparations of other foodstuffs	0	0	100.0
37	Preparations of other foodstuffs	0	0	100.0
38	Preparations of other foodstuffs	0	0	100.0
39	Preparations of other foodstuffs	0	0	100.0
40	Preparations of other foodstuffs	0	0	100.0
41	Preparations of other foodstuffs	0	0	100.0
42	Preparations of other foodstuffs	0	0	100.0
43	Preparations of other foodstuffs	0	0	100.0
44	Preparations of other foodstuffs	0	0	100.0
45	Preparations of other foodstuffs	0	0	100.0
46	Preparations of other foodstuffs	0	0	100.0
47	Preparations of other foodstuffs	0	0	100.0
48	Preparations of other foodstuffs	0	0	100.0
49	Preparations of other foodstuffs	0	0	100.0
50	Preparations of other foodstuffs	0	0	100.0
51	Preparations of other foodstuffs	0	0	100.0
52	Preparations of other foodstuffs	0	0	100.0
53	Preparations of other foodstuffs	0	0	100.0
54	Preparations of other foodstuffs	0	0	100.0
55	Preparations of other foodstuffs	0	0	100.0
56	Preparations of other foodstuffs	0	0	100.0
57	Preparations of other foodstuffs	0	0	100.0
58	Preparations of other foodstuffs	0	0	100.0
59	Preparations of other foodstuffs	0	0	100.0
60	Preparations of other foodstuffs	0	0	100.0
61	Preparations of other foodstuffs	0	0	100.0
62	Preparations of other foodstuffs	0	0	100.0
63	Preparations of other foodstuffs	0	0	100.0
64	Preparations of other foodstuffs	0	0	100.0
65	Preparations of other foodstuffs	0	0	100.0
66	Preparations of other foodstuffs	0	0	100.0
67	Preparations of other foodstuffs	0	0	100.0
68	Preparations of other foodstuffs	0	0	100.0
69	Preparations of other foodstuffs	0	0	100.0
70	Preparations of other foodstuffs	0	0	100.0
71	Preparations of other foodstuffs	0	0	100.0
72	Preparations of other foodstuffs	0	0	100.0
73	Preparations of other foodstuffs	0	0	100.0
74	Preparations of other foodstuffs	0	0	100.0
75	Preparations of other foodstuffs	0	0	100.0
76	Preparations of other foodstuffs	0	0	100.0
77	Preparations of other foodstuffs	0	0	100.0
78	Preparations of other foodstuffs	0	0	100.0
79	Preparations of other foodstuffs	0	0	100.0
80	Preparations of other foodstuffs	0	0	100.0
81	Preparations of other foodstuffs	0	0	100.0
82	Preparations of other foodstuffs	0	0	100.0
83	Preparations of other foodstuffs	0	0	100.0
84	Preparations of other foodstuffs	0	0	100.0
85	Preparations of other foodstuffs	0	0	100.0
86	Preparations of other foodstuffs	0	0	100.0
87	Preparations of other foodstuffs	0	0	100.0
88	Preparations of other foodstuffs	0	0	100.0
89	Preparations of other foodstuffs	0	0	100.0
90	Preparations of other foodstuffs	0	0	100.0
91	Preparations of other foodstuffs	0	0	100.0
92	Preparations of other foodstuffs	0	0	100.0
93	Preparations of other foodstuffs	0	0	100.0
94	Preparations of other foodstuffs	0	0	100.0
95	Preparations of other foodstuffs	0	0	100.0
96	Preparations of other foodstuffs	0	0	100.0
97	Preparations of other foodstuffs	0	0	100.0
98	Preparations of other foodstuffs	0	0	100.0
99	Preparations of other foodstuffs	0	0	100.0
100	Preparations of other foodstuffs	0	0	100.0

Overall imports slightly decreased from January to December 2025. Food & Beverages imports increased both in value and as a share of total imports.

<https://www.statsbots.org/bw/merchandise-trade-statistics>

Beverages, Spirits & Vinegar and Cereals remained the leading categories. Minor shifts occurred in contributions from other subcategories.

Private Bag 0024, Gaborone
Tel: 3671300
Toll Free: 0800 600 200

Four Thirty Square, Plot 54350
PG Matante Road,
CBD, Gaborone

E-mail: info@statsbots.org.bw
Website: www.statsbots.org.bw



STATISTICS BOTSWANA