

PSYCHIATRIC OUT-PATIENT HEALTH DISORDERS, 2016

Private Bag 0024, Gaborone
Tel: 3671 300 Fax: 3952201
Toll Free: 0800 600 200

Private Bag F193,
Francistown
Tel. 241 5848, Fax. 241 7540

Private Bag 32
Ghanzi
Tel: 371 5723 Fax: 659 7506

Private Bag 47
Maun
Tel: 371 5716 Fax: 686 4327

E-mail: info@statsbots.org.bw
Website: <http://www.statsbots.org.bw>



STATISTICS BOTSWANA

PSYCHIATRIC OUT-PATIENT HEALTH DISORDERS, 2016

Preface

This statistical health report analyses Out-Patient consultations about mental health disorders in Botswana. The data is collected from administrative records of all mental consultations at health facilities country wide. The brief states the major mental health consultations by age, sex, health district and type of consultation. In compiling this report, the international Classification of Diseases (ICD 10) was adopted to code the main condition.

Statistics Botswana's Health Statistics unit is seconded to the Ministry of Health and Wellness to provide statistical support, as an enabler of better national/public health programs through the collection and dissemination of quality official statistics for evidence-based decision-making, program monitoring and evaluation. The Unit produces Statistical Briefs and reports on health related issues including mental health.

For more information, contact the Directorate of Stakeholder Relations at 3671300. All Statistics Botswana outputs/publications are available on the website at www.statsbots.org.bw and at the Statistics Botswana Information Resource Centre (IRC) (Head-Office, Plot 45350, PG Matante road CBD, Gaborone).

We sincerely thank all stakeholders involved in the formulation of this brief, for their continued support, as we strive to better serve users of our statistical products and services.



Dr B.Mguni
Statistician General
August 2021

Table of Contents

Preface.....	i
Table of Contents.....	ii
1.0 INTRODUCTION.....	1
2.0 MAIN FINDINGS.....	1
2.1: Total Out-Patient Mental Health Consultations.....	1
2.2: Blocks Of Mental Health Consultations.....	2
2.3: Sex And Age Structure.....	2
2.4: Distribution Of Mental And Behavioural Disorders By Month.....	3
2.5. The Ten Leading New And Repeat Out-Patient Mental Health Consultations.....	3
2.6 The Ten Leading Out-Patient Mental Health Consultations By Sex.....	4
2.7 Leading Mental Health Consultations By Broad Age Groups.....	4
2.8 Annexes.....	7

LIST OF TABLES

Table 1: Mental Health Consultation by Health District.....	1
Table 2: Mental and Behavioural Disorders by blocks.....	2
Table 3: The Ten Leading mental health consultations, New and Repeat cases.....	3
Table 4: The Ten Leading mental health conditions for Males and Females.....	4

LIST OF FIGURES

Figure 1: Mental health consultations by age group and sex.....	2
Figure 2: Distribution of Mental and Behavioural Disorders by Month, 2016.....	3
Figure 3: The leading Out-Patient mental health consultations in the 0-14 broad age group.....	4
Figure 4: The leading Out-Patient mental health consultations in the 15-24 broad age group.....	5
Figure 5: The leading Out-Patient mental health consultations in the 25-44 broad age group.....	5
Figure 6: The leading outpatient mental health consultations in the 45+ group broad age group.....	6

1.0 Introduction

This publication is based on administrative records from health facilities using the Mental Disorder Out-Patient Register (MH1053/Rev 2003) in Botswana. The form is filled by medical professionals for all Out-Patient consultations. A record is completed as either a new or repeat case, with information on date, sex, age main mental disorder, and International Classification of Diseases (ICD-10 code). A new consultation refers to a case where a patient is seeking health services for a condition for the first time. A repeat refers to a case where a patient is getting a service for the same condition for the second or repeated time. An episode of contact with health services for reasons other than illness, may be recorded under the appropriate main condition. The information is collected on a monthly basis from health facilities.

According to WHO ICD-10 Volume 2, the main condition is defined as: the condition, diagnosed at the end of the episode of health care, primary responsible for the patients need for treatment or investigation. If there is more than one such condition, the one held most responsible for the greatest use of resources should be selected. If no diagnosis was made, the main symptoms, abnormal finding, or problem should be selected as the main condition.

2.0 Main Findings

2.1 Total Mental Health Out-Patient Consultations, 2016

Thirty seven thousand, three hundred and fifty two (37,352) mental Out-Patient disorder consultations were reported by health facilities in 2016. **Table 1** indicates that 35,195 repeat cases were reported as opposed to 2,157 new cases of the consultations. Majority of mental health consultations were from Gaborone with 19.1 percent followed by Francistown with 18.3 percent and Lobatse with 15.6 percent. These top three health districts constituted 53.0 percent of all mental health consultations in Botswana. The health districts are also a host to the three-referral hospitals in Botswana. Repeat cases constituted 94.2 percent of all mental health consultations while new cases constituted 5.8 percent. The number of mental health Out-Patient consultations by all other health districts is presented below. **Annex 1** further shows the distribution of diagnosis by Districts.

Table 1: Mental Health Consultation by Health District, 2016

District	New	Percent	Repeat	Percent	Grand Total	Percent
Bobirwa	19	0.1	650	1.7	669	1.8
Boteti	30	0.1	280	0.7	310	0.8
Charleshill	0	0.0	31	0.1	31	0.1
Chobe	99	0.3	745	2.0	844	2.3
Francistown	207	0.6	6,625	17.7	6,832	18.3
Gaborone	616	1.6	6,504	17.4	7,120	19.1
Gantsi	18	0.0	243	0.7	261	0.7
Goodhope	20	0.1	409	1.1	429	1.1
Kgalagadi North	3	0.0	226	0.6	229	0.6
Kgatleng	8	0.0	157	0.4	165	0.4
Kweneng East	34	0.1	1,327	3.6	1,361	3.6
Kweneng West	3	0.0	97	0.3	100	0.3
Lobatse	621	1.7	5,209	13.9	5,830	15.6
Mahalapye	39	0.1	1,479	4.0	1,518	4.1
Moshupa	85	0.2	909	2.4	994	2.7
Ngamiland	8	0.0	568	1.5	576	1.5
North East	55	0.1	714	1.9	769	2.1
Palapye	115	0.3	2,618	7.0	2,733	7.3
Selibe-Phikwe	1	0.0	101	0.3	102	0.3
Serowe	0	0.0	22	0.1	22	0.1
South East	59	0.2	2,379	6.4	2,438	6.5
Southern	100	0.3	3,656	9.8	3,756	10.1
Tutume	17	0.0	246	0.7	263	0.7
Grand Total	2,157	5.8	35,195	94.2	37,352	100.0

2.2 Blocks of Mental Health Consultations

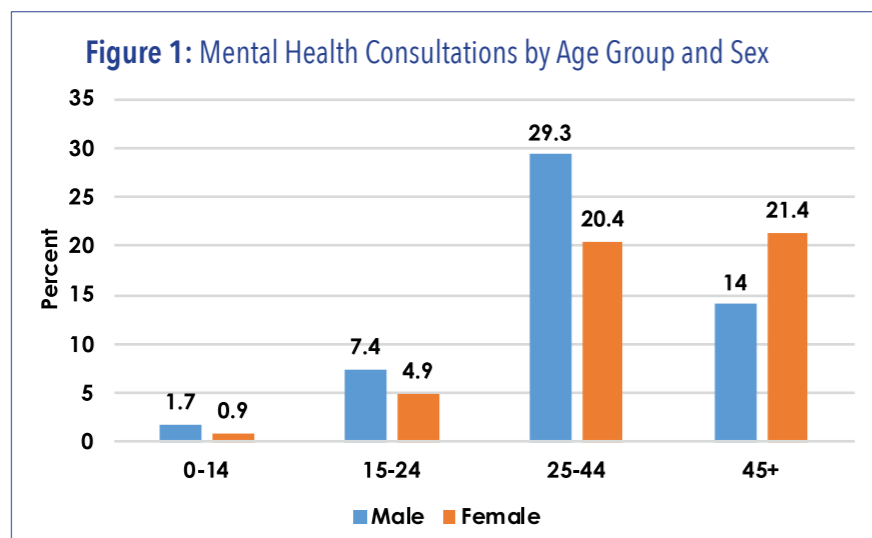
Table 2 gives the distribution of Mental and Behavioural Disorders by blocks. The ICD-10 classifies mental and behavioural disorders into blocks. Schizophrenia, Schizotypal and delusional disorders was the most common mental disorder block, comprising 56.0 percent of all Out-Patient mental health disorders in 2016. Mood (Affective) Disorders were the second most common block of mental disorders with 16.9 percent. Episodic and paroxysmal disorders were the third with 7.5 percent of all consultations.

Table 2: Mental and Behavioral Disorders by Blocks

ICD Code	Diagnosis	New	Repeat	Total	Percent
B20-B24	Human immunodeficiency virus (HIV) disease	17	245	262	0.7
F00-F09	Organic, including symptomatic, mental disorders	122	1,318	1,440	3.9
F10-F19	Mental and behavioural disorders due to psychoactive substance use	185	1,514	1,699	4.5
F20-F29	Schizophrenia, schizotypal and delusional disorders	409	20,507	20,916	56.0
F30-F39	Mood (affective) disorders	367	5,929	6,296	16.9
F40-F48	Neurotic, stress-related and somatoform disorders	490	1,206	1,696	4.5
F50-F59	Behavioural syndromes associated with physiological disturbances and physical factors	20	98	118	0.3
F60-F69	Disorders of adult personality and behaviour	23	106	129	0.3
F70-F79	Mental retardation	36	650	686	1.8
F80-F89	Disorders of psychological development	20	82	102	0.3
F90-F98	Behavioural and emotional disorders with onset usually occurring in childhood and adolescence	56	400	456	1.2
F99	Unspecified mental disorder	50	57	107	0.3
G40-G47	Episodic and Paroxysmal disorders	65	2,732	2,797	7.5
R40-R46	Symptoms and signs involving cognition, perception, emotional state and behaviour	7	5	12	0.0
Z00-Z13	Persons encountering health services for examination and investigation	204	285	489	1.3
Z80-Z99	persons with potential health hazards related to family and personal history and certain conditions influencing health status	86	61	147	0.4
Grand Total		2,157	35,195	37,352	100.0

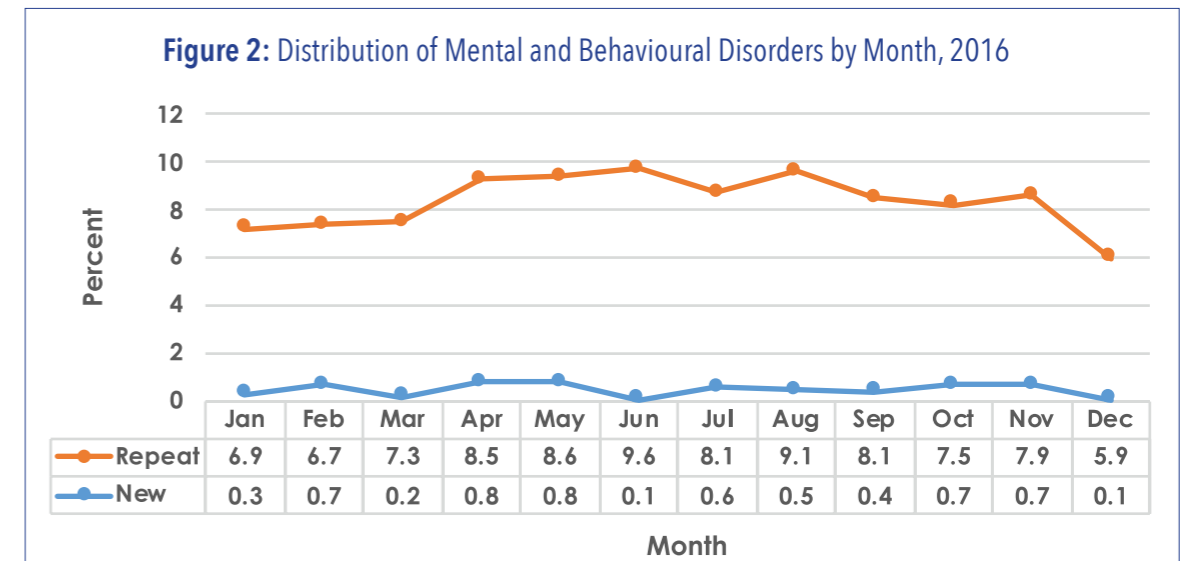
2.3 Sex and Age Structure

Figure 1 shows the percentage distribution of mental health Out-Patient consultations by age group and sex. More than half (52.4%) of mental health Out-Patient consultations were males while their female counterparts contributed 47.6 percent. Furthermore, males were higher than females in all age groups except for 45+ where females with (21.4%) outnumbered their counterparts. Males constituted only 14 percent of all mental health consultations. The majority of consultations were in the 25–44 age groups (49.7%) and the least in the 0-14 age group (2.6%). Annex 3 further demonstrates mental health consultations by age group, sex and diagnosis.



2.4 Distribution of Mental and Behavioural Disorders by Month

Figure 2 shows the percentage distribution of mental and behavioural disorders by Month among New and Repeat attendances. There is a slight difference in the number of consultations for new cases (ranging from 0.1-0.8%) of all mental health consultations. Although this shows that there were very few (new consultations) for each month, more repeat consultations were reported for each month ranging from 5.9-9.1 percent. This indicates that there were more repeat consultations as compared to new consultations for each month. **Annex 2** further demonstrates the distribution of diagnosis by month.



2.5 The Ten Leading New and Repeat Out-Patient Mental Health Consultations

Table 3 shows the leading Out-Patient mental health consultations by new and repeat attendances. Schizophrenia unspecified was the leading mental consultation among repeat cases constituting 47.4 percent of all repeat consultations, followed by Depressive Episode (unspecified) with 11.1 percent and Epilepsy Unspecified with 7.7 percent. Depressive episode (unspecified) was leading amongst new cases with 14.9 percent of new mental health consultations followed by Acute and transient psychotic disorder (unspecified) with 8.0 percent and Schizophrenia (unspecified) with 7.6 percent.

Table 3: The Ten Leading Mental Health Consultations, New and Repeat Cases

ICD Code	Mental Condition	New	Rank	%	Repeat	Rank	%	Grand Total
F32.9	Depressive episode, unspecified	321	1	14.9	3,901	2	11.1	4,222
F23.9	Acute and transient psychotic disorder, unspecified	173	2	8.0	1,101	6	3.1	1,274
F20.9	Schizophrenia, unspecified	164	3	7.6	16,683	1	47.4	16,847
F43.2	Adjustment disorders	149	4	6.9	298	-	0.8	447
Z03.2	Observation for suspected mental and behavioural disorders	142	5	6.6	177	-	0.5	319
F43.0	Acute stress reaction	117	6	5.4	221	-	0.6	338
Z91.5	Personal history of self-harm	86	7	4.0	61	-	0.2	147
F43.9	Reactions to severe stress	86	7	4.0	128	-	0.4	214
F03	Unspecified Dementia	83	8	3.8	902	7	2.6	985
F12.1	Mental and behavioural disorders due to use of cannabinoids, harmful use	76	9	3.5	597	8	1.7	673
G40.9	Epilepsy, unspecified	64	10	3.0	2,720	3	7.7	2,784
F31.9	Bipolar affective disorder, unspecified	25	-	1.2	1,786	5	5.1	1,811
F25.9	Schizoaffective disorder, unspecified	21	-	1.0	2,005	4	5.7	2,026
F79.9	Unspecified mental retardation	32	-	1.5	566	9	1.6	598
F29.9	Unspecified Non organic Psychosis	37	-	1.7	518	10	1.5	555
-	Others	581	-	26.5	3,531	-	10.0	4,112
Grand Total		2,157		100.0	35,195		100.0	37,352

2.6 The Ten Leading Out-Patient Mental Health Consultations by Sex

Table 4 shows the distribution of the ten leading Mental Health consultations by sex in 2016. Schizophrenia unspecified was ranked first for both males and females with 52.3 percent for males and 37.1 percent for females. Epilepsy unspecified was the second leading consultation among males, constituting 8.6 percent of consultations while Depressive episode (unspecified) was second leading amongst females with 18.1 percent. Mental and behavioural disorders due to use of cannabinoids (psychotic disorder) and Mental and behavioural disorders due to use of cannabinoids (harmful use) were the only top ten consultations among males not in females while Adjustment disorders and Unspecified non organic psychosis were in females only.

Table 4: The Ten Leading Mental Health Conditions for Males and Females

ICD Code	Main Condition	Male	Percent	Rank	Female	Percent	Rank	Grand Total
F20.9	Schizophrenia, unspecified	10,248	52.3	1	6,599	37.1	1	16,847
G40.9	Epilepsy, unspecified	1,688	8.6	2	1,096	6.2	5	2,784
F32.9	Depressive episode, unspecified	1,013	5.2	3	3,209	18.1	2	4,222
F25.9	Schizoaffective disorder, unspecified	881	4.5	4	1,145	6.4	3	2,026
F31.9	Bipolar affective disorder, unspecified	706	3.6	5	1,105	6.2	4	1,811
F23.9	Acute and transient psychotic disorder, unspecified	662	3.4	6	612	3.4	7	1,274
F12.1	Mental and behavioural disorders due to use of cannabinoids, harmful use	623	3.2	7	-	-	-	623
F12.5	Mental and behavioural disorders due to use of cannabinoids, psychotic disorder	417	2.1	8	-	-	-	417
F03	Unspecified Dementia	333	1.7	9	652	3.7	6	985
F79	Unspecified mental retardation	319	1.6	10	279	1.6	9	598
F29.9	Unspecified Non organic Psychosis	260	1.3	-	295	1.7	8	555
	Other mental Conditions	2,436	12.4	-	2,512	14.1	-	4,948
F41.9	Adjustment disorders	-	-	-	262	1.5	10	262
	Grand Total	19,586	100.0		17,766	100.0		37,352

2.7 The Leading Mental Health Consultations by Broad Age Group

Figure 3 shows the leading mental health Out-Patient consultations in the 0-14 broad age group. For this age group, Disturbance of activity and attention was the leading mental health consultation accounting for 27.8 percent followed by Epilepsy unspecified with 21.7 percent and Unspecified Mental Retardation with 8.2 percent. All the top ten mental health consultations among this group constituted 79.3 percent of all Out-Patient consultations in this age group.

Figure 3: The Leading Mental Health Out-Patient Consultations in the 0-14 Broad Age Group.

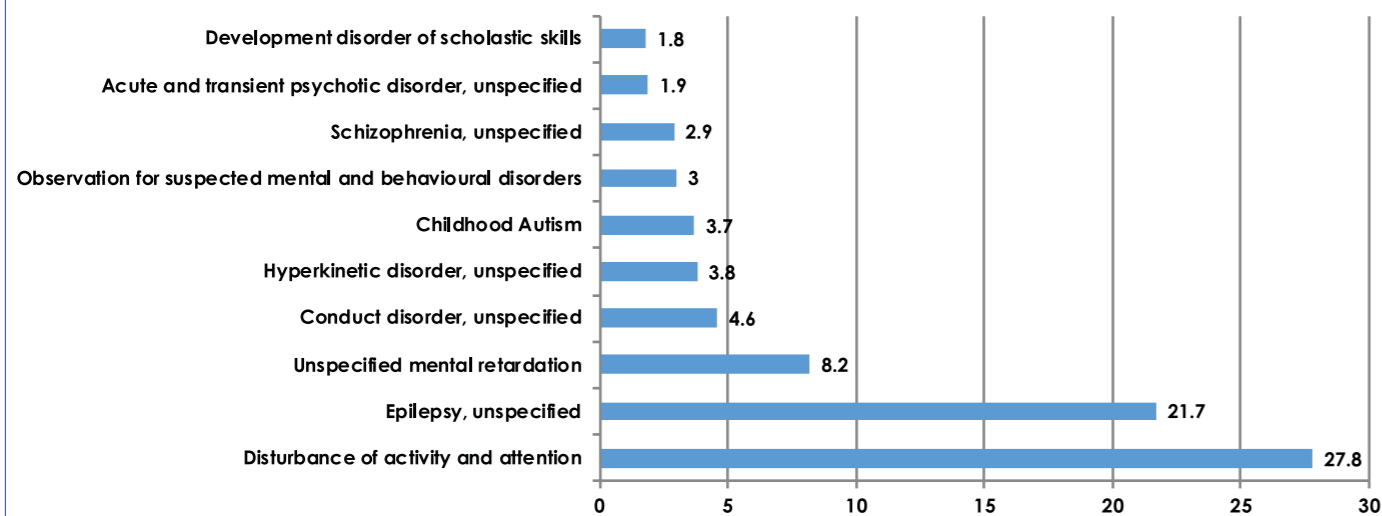


Figure 4 shows the leading mental health Out-Patient consultations in the 15-24 age group. For this group, Schizophrenia, unspecified was the leading cause of mental health Out-Patient consultation with 26.3 percent followed by Epilepsy Unspecified with 10.4 percent and Depressive episode unspecified, with 9.7 percent. All the top ten mental consultations in the 15-24 broad age groups constituted 79.3 percent of all Out-Patient consultations in this age group.

Figure 4: The Leading Mental Health Out-Patient Consultations in the 15-24 Age Group

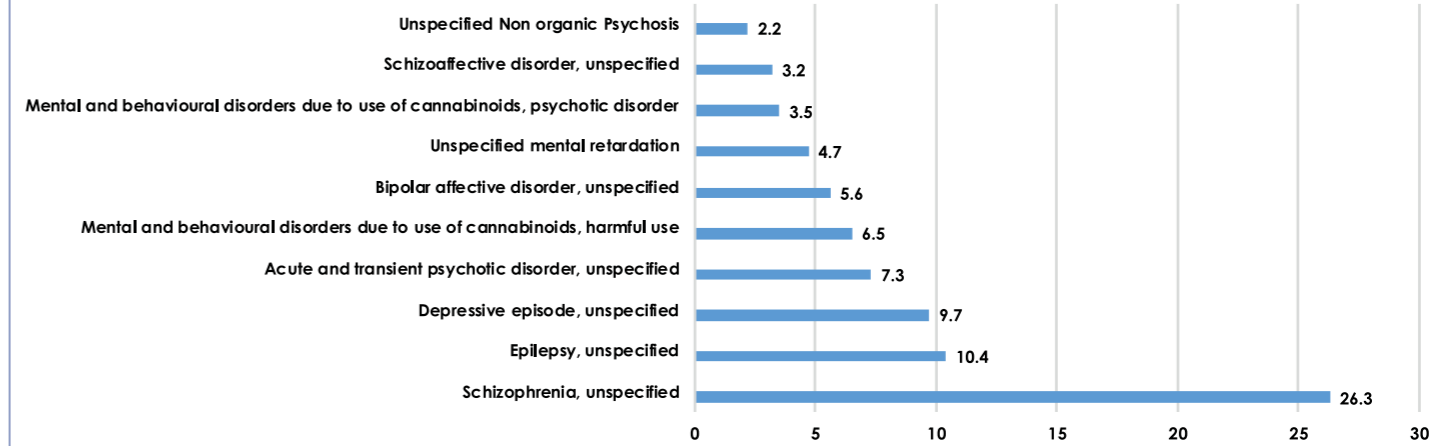


Figure 5 shows the leading mental health Out-Patient consultation by 25-44 years broad age group category. Schizophrenia, Unspecified (46.1%) was the leading mental health consultation, the second was Depressive episode, unspecified with 10.6 percent and the third was Epilepsy, unspecified with 7.5 percent. All the top ten mental consultations among 25-44 broad age group constitute 86.9 percent of all mental health Out-Patient consultations in this age group.

Figure 5: The Leading Mental Health Out-Patient Consultation by 25-44 Years Broad Age Group

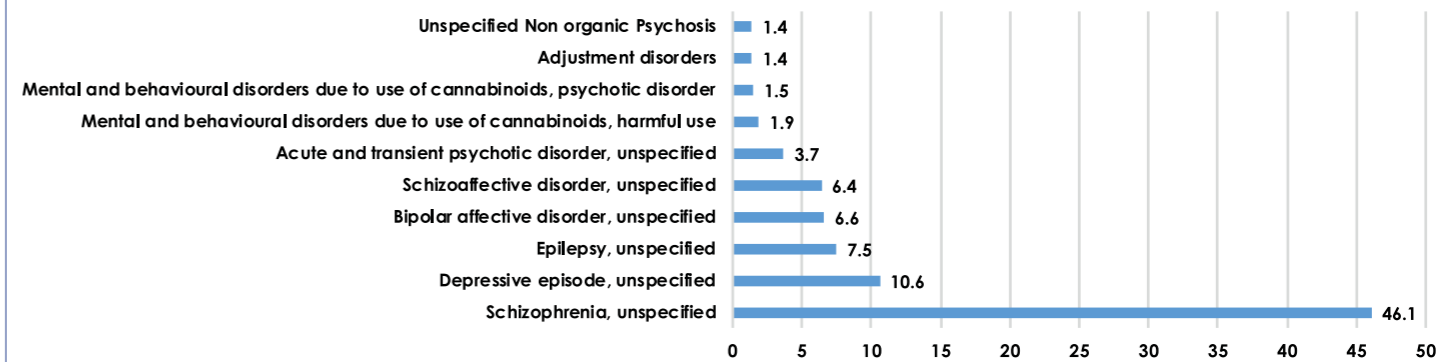
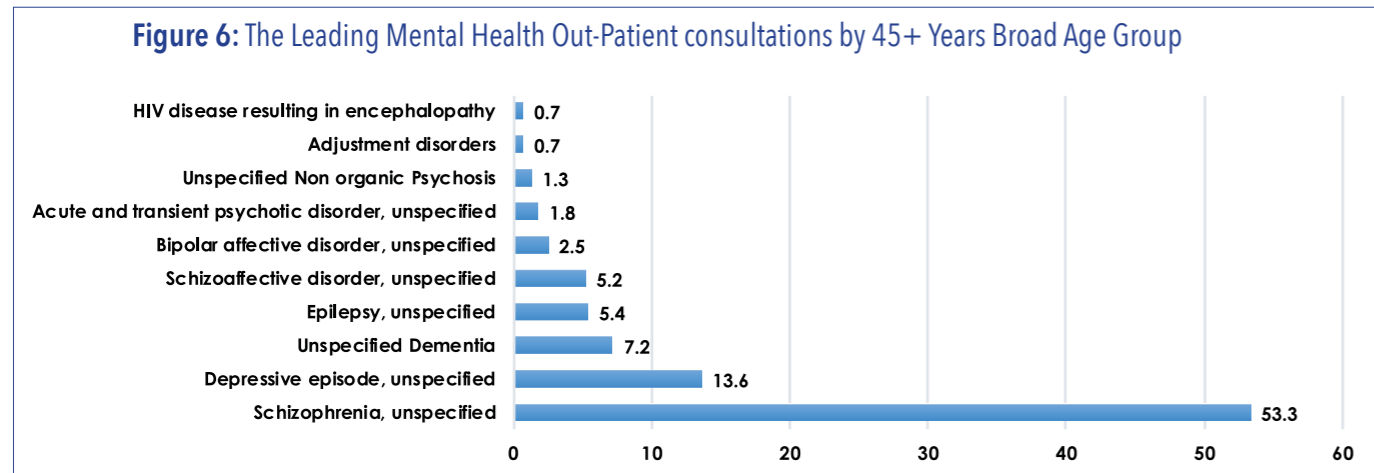


Figure 6 shows the leading Mental Health Out-Patient consultation by 45+ years broad age group category. Similarly to age group 25-44, Schizophrenia Unspecified, (53.3%) was the leading mental health consultation, the second was Depressive episode, unspecified with 13.6 percent. The third was Unspecified Dementia with 7.2 percent as opposed to the 25-44 age group where Epilepsy unspecified was third with 7.5 percent. All the top ten mental consultations among 45+ broad age group constitute 91.7 percent of all mental health Out-Patient consultations in this age group



Annexes

Annex 1: Mental Health Out-Patient Attendances by Diagnosis and District, 2016

Diagnosis	Botswana	Bofeteng	Charlshill	Chobe	Francistown	Gaborone	Gantsi	Goodhope	Kgalagadi North	Kgatleng	Kweneng East	Kweneng West	Lobatse	Mahalapye	Moshupa	Ngamiland	North East	Palapye	Selebe-Phikwe	Serowe	South East	Southern	Tutume	Grand Total
B20-B24 Human immunodeficiency virus (HIV) disease																								
B22.0 HIV disease resulting in encephalopathy	18	9	-	1	18	1	3	-	-	-	32	1	14	47	24	11	19	22	1	-	3	29	9	262
Total	18	9	-	1	18	1	3	-	-	-	32	1	14	47	24	11	19	22	1	-	3	29	9	262
F00-F09 Organic, including symptomatic, mental disorders																								
F00.0 Dementia in Alzheimer's disease with early onset	-	-	-	-	-	-	-	-	-	-	-	-	1	-	-	-	1	1	-	-	-	-	-	3
F01.0 Vascular dementia of acute onset	-	-	-	-	-	-	-	-	-	-	-	-	-	-	-	-	-	-	-	-	-	1	-	1
F01.9 Vascular dementia, unspecified	-	-	-	-	-	1	-	-	-	-	-	-	-	-	-	-	-	-	-	-	-	6	-	7
F03 Unspecified Dementia	25	6	-	13	235	120	2	9	1	4	30	4	162	32	22	9	31	57	2	-	69	136	16	985
F05.9 Delirium, unspecified	1	-	-	1	-	-	-	-	-	-	-	-	3	-	-	1	-	-	1	-	-	1	1	9
F06.0 Organic hallucinosis	-	-	-	2	1	-	-	-	-	-	-	-	14	-	1	-	-	-	-	-	-	-	4	22
F06.2 Organic delusional (schizophrenia-like) disorder	-	-	-	2	-	-	-	-	-	-	2	-	42	-	2	1	-	-	-	-	-	-	-	49
F06.3 Organic mood (affective) disorder	-	-	-	-	-	-	-	-	-	-	-	-	10	-	-	-	-	-	-	-	-	20	-	30
F06.7 Organic emotionally labile (asthenic) disorder	-	-	-	-	-	1	-	-	-	-	-	-	2	-	-	-	1	-	-	-	-	-	-	4
F06.8 Epileptic psychosis, unspecified	1	-	-	1	-	-	4	-	-	-	-	-	-	1	-	-	-	2	-	-	-	-	1	10
F06.9 Organic brain syndrome, unspecified	1	2	-	9	107	74	-	-	-	-	1	-	23	2	-	-	1	-	-	-	1	10	1	232
F09 Unspecified organic or symptomatic mental disorder	-	-	-	1	-	-	12	2	2	1	1	-	26	1	1	2	-	5	-	-	9	20	5	88
Total	28	8	-	29	343	196	18	11	3	5	34	4	283	36	26	13	34	65	3	-	79	194	28	1,440
F10-F19 Mental and behavioural disorders due to psychoactive substance use																								
F10.0 Mental and behavioural disorders due to use of alcohol, acute intoxication	-	2	-	1	84	1	-	-	-	-	1	-	1	-	-	-	-	1	-	-	-	-	-	91
F10.1 Mental and behavioural disorders due to use of alcohol, harmful use	8	2	-	6	81	102	1	-	-	-	-	-	40	1	3	-	1	6	-	-	5	8	1	265
F10.5 Mental and behavioural disorders due to use of alcohol, psychotic disorder	14	-	-	-	1	7	1	1	-	-	2	-	10	12	2	-	4	5	-	-	17	23	-	99
F12.1 Mental and behavioural disorders due to use of cannabinoids, harmful use	6	8	-	1	122	308	4	2	-	9	4	-	123	2	19	6	5	31	3	-	6	14	-	673
F12.2 Mental and behavioural disorders due to use of cannabinoids, dependence syndrome	3	-	-	-	-	-	-	-	-	-	-	-	1	1	1	-	-	5	-	-	-	-	1	12
F12.5 Mental and behavioural disorders due to use of cannabinoids, psychotic disorder	11	3	-	2	-	43	7	7	3	-	8	-	61	108	10	18	2	34	-	-	76	49	9	451
F13.1 Mental and behavioural disorders due to use of sedatives or hypnotics	1	-	-	-	-	2	-	-	-	-	-	-	-	-	-	-	-	-	-	-	-	-	-	3
F14.0 Mental and behavioural disorders due to use of cocaine	1	-	-	-	-	-	-	-	-	-	-	-	1	-	-	-	-	-	-	-	-	-	-	2
F16.0 Mental and behavioural disorders due to use of hallucinogens	1	-	-	-	-	-	-	-	-	-	-	-	-	-	-	-	-	-	-	-	-	-	-	1
F17.2 Mental and behavioural disorders due to use of tobacco	1	-	-	-	-	-	-	-	-	-	-	-	1	-	-	-	-	-	-	-	1	-	-	3
F18.1 Mental and behavioural disorders due to use of volatile solvents	-	-	-	-	-	-	-	-	-	-	-	-	1	-	-	4	-	-	-	-	-	-	-	5
F19.9 Mental and behavioural disorders due to multiple drug use and use of other psychoactive substances	9	-	-	-	25	1	-	-	-	-	1	-	40	1	-	7	-	3	1	-	4	-	2	94
Total	55	15	-	10	313	464	13	10	3	9	16	-	279	125	35	35	12	85	4	-	109	94	13	1,699

Annex 1 Cont'd: Mental Health Out-Patient Attendances by Diagnosis and District, 2016

Diagnosis	Botswana	Bofeti	Charlshill	Chobe	Francistown	Gaborone	Gantisi	Goodhope	Kgalagadi North	Kgatleng	Kweneng East	Kweneng West	Lobatse	Mahalapye	Moshupa	Ngamiland	North East	Palapye	Selibe-Phikwe	Serowe	South East	Southern	Tutume	Grand Total
F20-F29 Schizophrenia, schizotypal and delusional disorders																								
F20.0 Paranoid schizophrenia	-	-	-	3	-	1	-	-	-	-	1	-	2	2	-	-	-	-	-	-	1	-	1	11
F20.1 hebephrenic schizophrenia	-	4	-	-	-	2	-	-	-	-	-	-	-	1	-	-	-	-	-	-	-	-	-	7
F20.2 Catatonic schizophrenia	-	-	-	-	-	-	-	-	-	-	-	-	-	-	-	-	-	-	-	-	-	1	-	1
F20.3 Undifferentiated schizophrenia	-	-	-	-	-	-	-	-	-	-	-	-	1	-	-	2	-	-	-	-	-	-	-	3
F20.5 Residual schizophrenia	-	-	-	-	-	-	-	-	-	-	1	-	1	1	-	1	-	-	-	-	-	2	1	7
F20.9 Schizophrenia, unspecified	286	159	31	328	2,443	3,259	152	241	130	80	896	64	2,292	681	525	318	315	1,518	50	16	826	2,138	99	16,847
F21.0 Schizotypal disorder	-	-	-	-	-	-	-	-	-	-	-	-	-	2	-	3	-	-	-	-	-	-	-	5
F22.0 Delusional disorder	-	-	-	1	20	3	-	-	1	-	2	-	12	1	4	1	1	-	-	-	27	4	7	84
F22.8 Other persistent delusional disorder	-	-	-	-	-	-	-	-	-	-	-	-	-	-	1	-	-	-	-	-	-	-	-	1
F22.9 Persistent delusional disorder, unspecified	-	-	-	-	-	1	-	-	-	-	-	-	4	1	-	-	-	-	-	-	3	2	1	12
F23.0 Acute and polymorphic psychotic disorder without symptoms of schizophrenia	-	-	-	2	-	1	-	-	-	-	-	-	2	-	1	-	-	1	-	-	-	-	-	7
F23.1 Acute and polymorphic psychotic disorder with symptoms of schizophrenia	-	-	-	-	-	1	-	-	-	-	-	-	1	-	-	-	-	-	-	-	-	-	-	2
F23.2 Acute schizophrenia-like psychotic disorder	1	-	-	-	-	-	-	-	-	-	-	-	-	-	-	-	-	-	-	-	-	-	-	1
F23.9 Acute and transient psychotic disorder, unspecified	1	15	-	42	477	242	6	10	9	10	16	4	160	111	15	26	6	77	4	-	23	19	1	1,274
F24.0 Induced delusional disorder	-	-	-	-	42	1	-	-	-	1	1	-	1	-	-	-	-	-	-	-	2	1	7	56
F25.0 Schizoaffective disorder, manic type	-	-	-	-	-	-	-	-	-	-	-	-	1	1	1	-	-	2	-	-	-	-	-	5
F25.1 Schizoaffective disorder, depressive type	-	-	-	-	-	-	-	-	-	-	-	-	-	-	-	-	-	-	-	-	2	-	-	2
F25.2 Schizoaffective disorder, mixed type	-	-	-	-	-	-	-	-	-	-	-	-	-	-	-	-	-	1	-	-	-	1	-	2
F25.9 Schizoaffective disorder, unspecified	14	9	-	15	641	376	2	26	1	22	57	4	298	109	34	17	30	155	12	-	70	114	20	2,026
F28.0 Chronic hallucinatory psychosis	-	-	-	1	5	1	-	-	-	-	-	-	-	-	-	-	-	-	-	-	-	1	-	8
F29.9 Unspecified Non organic Psychosis	29	-	-	-	-	427	-	2	5	-	51	-	2	-	4	1	1	15	-	2	3	9	4	555
Total	331	187	31	392	3,628	4,315	160	279	146	113	1,025	72	2,777	910	585	369	353	1,769	66	18	957	2,292	141	20,916
F30-F39 Mood (affective) disorders																								
F30.0 Hypomania	-	-	-	-	22	1	-	-	-	-	4	-	9	-	1	1	-	1	-	-	-	4	-	43
F30.2 Mania with psychotic symptoms	1	-	-	-	-	-	-	-	-	-	-	-	-	-	-	-	-	-	-	-	-	-	-	1
F30.8 Other manic episodes	-	-	-	-	-	-	-	-	-	-	-	-	-	-	1	-	-	-	-	-	-	-	-	1
F30.9 Manic episode, unspecified	1	2	-	1	10	30	-	2	-	1	12	-	9	2	1	1	2	5	-	-	-	25	-	104
F31.9 Bipolar affective disorder, unspecified	13	10	-	58	413	547	7	2	-	6	34	-	446	54	7	32	14	6	3	-	95	62	2	1,811
F32.0 Mild depressive episode	-	-	-	1	-	1	-	-	-	1	-	-	5	-	2	-	-	5	-	-	2	2	-	19
F32.1 Moderate depressive episode	1	2	-	1	-	1	-	-	-	-	-	-	2	-	-	-	-	-	-	-	-	-	-	7
F32.2 Severe depressive episode without psychotic symptoms	-	-	-	1	-	1	-	-	-	-	1	-	3	-	-	-	-	-	-	-	1	1	-	8
F32.3 Severe depressive episode with psychotic symptoms	22	-	-	3	-	-	1	1	-	-	-	-	2	1	2	-	-	-	-	-	23	-	1	56
F32.8 Other depressive episodes	-	-	-	-	-	-	-	-	-	-	-	-	3	-	-	-	-	-	1	-	-	-	-	4
F32.9 Depressive episode, unspecified	22	28	-	60	898	722	28	29	7	9	98	4	650	141	132	60	75	258	12	-	575	382	32	4,222
F33.9 Recurrent depressive disorder, unspecified	-	-	-	-	-	-	-	-	-	-	1	-	1	-	-	-	-	-	-	-	-	-	-	2
F34.0 Cyclothymia	-	-	-	-	-	-	-	-	-	-	-	-	2	-	-	-	-	-	-	-	-	-	-	2
F34.9 Persistent mood(affective) disorder, unspecified	-	-	-	-	-	-	-	-	-	-	-	-	1	-	-	-	-	-	-	-	-	-	-	1
F38.0 Other Single Mood (affective)Disorder	-	-	-	-	7	-	-	-	-	-	-	-	-	-	-	-	-	-	-	-	-	-	-	7
F38.1 Other recurrent mood(affective)disorders	-	-	-	-	-	-	-	-	-	-	-	-	1	-	-	-	-	-	-	-	-	-	-	1
F38.8 Other specified mood(affective)disorders	-	-	-	-	-	-	-	-	-	-	-	-	2	-	-	-	-	-	-	-	-	-	-	2
F39.9 Unspecified mood(affective)disorder	2	1	-	-	1	1	-	-	-	-	-	-	-	-	-	-	-	-	-	-	-	-	-	5
Total	62	43	-	125	1,351	1,304	36	34	7	17	150	4	1,136	198	146	94	91	275	16	-	696	476	35	6,296

Annex 1 Cont'd: Mental Health Out-Patient Attendances by Diagnosis and District, 2016

Diagnosis	Bobirwa	Bofefi	Charlshill	Chobe	Francistown	Gaborone	Gantsi	Goodhope	Kgalagadi North	Kgatiteng	Kweneng East	Kweneng West	Lobatse	Mahalapye	Moshupa	Ngamiland	North East	Palapye	Selibe-Phikwe	Serowe	South East	Southern	Tutume	Grand Total	
F40-F48 Neurotic, stress-related and somatoform disorder																									
F40.0 Agoraphobia	-	-	-	-	-	-	-	-	-	-	-	-	3	-	-	-	-	4	-	-	-	-	-	-	7
F40.1 Social Phobias	-	-	-	-	-	-	-	-	-	-	-	-	4	-	-	1	-	1	-	-	-	-	-	-	6
F40.2 Specific(isolated)phobias	-	-	-	-	-	-	-	-	-	-	-	-	1	-	-	-	-	1	-	-	-	-	-	-	2
F40.9 Phobic anxiety disorder, unspecified	-	2	-	2	23	5	-	2	-	-	4	-	3	1	1	-	5	15	1	-	1	5	-	-	70
F41.0 Panic disorder(episodic paroxysmal anxiety)	-	-	-	1	-	2	-	-	-	-	1	-	12	-	2	1	1	2	-	-	8	-	1	-	31
F41.1 Generalized anxiety disorder	-	2	-	11	-	4	-	-	-	-	-	-	8	-	-	-	-	-	-	-	2	2	-	-	29
F41.2 Mixed anxiety and depressive disorder	-	-	-	-	-	1	-	-	-	-	-	-	1	-	-	-	-	-	-	-	-	-	-	-	2
F41.8 Other specified anxiety disorders	-	-	-	-	-	-	-	-	-	-	-	-	2	-	-	-	-	-	-	-	1	-	-	-	3
F41.9 Anxiety disorder, unspecified	2	-	-	10	122	59	8	1	-	1	-	2	31	1	28	4	4	4	1	-	30	6	-	-	314
F42.9 Obsessive-compulsive disorder, unspecified	7	-	-	3	-	1	-	-	-	-	-	-	4	1	1	-	-	-	-	-	-	-	-	-	17
F43.0 Acute stress reaction	5	3	-	50	86	16	-	1	-	2	4	-	46	24	23	-	7	26	-	-	22	19	4	-	338
F43.1 Post-traumatic stress disorder	-	6	-	12	9	15	2	2	-	1	2	-	30	-	8	-	3	1	-	-	9	3	1	-	104
F43.2 Adjustment disorders	1	8	-	25	27	98	4	-	-	2	-	-	216	-	20	-	-	-	-	-	31	15	-	-	447
F43.8 Other reactions to severe stress	-	-	-	-	-	-	-	-	-	-	-	-	1	-	-	-	1	-	-	-	-	1	-	-	3
F43.9 Reactions to severe stress	1	1	-	2	-	33	1	-	-	-	6	6	44	8	24	-	-	55	-	-	6	24	3	-	214
F44.0 Dissociative amnesia	-	-	-	-	-	2	-	-	-	-	-	-	-	-	-	-	-	-	-	-	2	-	-	-	4
F44.8 Other dissociative(conversion)disorders	-	-	-	-	-	-	-	-	-	-	-	-	-	-	-	1	-	-	-	-	1	1	-	-	3
F44.9 Dissociative(conversion)disorder, unspecified	-	-	-	2	3	1	-	-	-	-	-	-	3	2	3	-	-	-	-	-	8	3	-	-	25
F45.0 Somatization disorders	-	-	-	4	5	4	-	-	-	-	-	-	3	2	-	-	-	1	-	-	15	-	-	-	34
F45.9 Somatoform disorder, unspecified	-	-	-	5	-	9	-	-	-	-	2	-	5	4	1	-	1	-	-	-	12	4	-	-	43
Total	16	22	-	127	275	250	15	6	-	6	19	8	417	43	111	7	22	110	2	-	148	83	9	1,696	
F50-F59 Behavioural syndromes associated with physiological disturbances and physical factors																									
F50.9 Eating disorder, unspecified	-	-	-	-	-	1	-	-	-	-	-	-	1	-	-	-	-	-	-	-	-	-	-	-	2
F51.0 Nonorganic insomnia	-	-	-	2	2	1	-	-	-	-	-	-	1	-	-	-	-	-	-	-	1	-	-	-	7
F51.3 Sleepwalking (Somnambulism)	-	-	-	-	12	-	-	-	-	-	-	-	-	-	-	-	-	-	-	-	-	-	-	-	12
F51.4 Sleep terrors(night terrors)	-	-	-	-	-	-	-	-	-	-	-	-	-	-	-	-	-	-	-	-	2	-	-	-	2
F51.5 Nightmares	-	-	-	-	-	-	-	-	-	-	-	-	2	-	-	-	-	-	-	-	-	-	-	-	2
F51.9 Nonorganic sleep disorder, unspecified	-	-	-	-	-	6	-	-	-	-	-	-	6	3	1	-	-	3	-	-	-	-	-	-	19
F53.1 Severe mental and behavioural disorders associated with the puerperium, not elsewhere classified	3	-	-	1	12	5	2	-	-	-	11	-	4	3	-	5	-	10	-	-	2	11	2	-	71
F53.8 Other mental and behavioural disorders associated with the puerperium, not elsewhere classified	-	-	-	-	-	-	-	-	-	-	-	-	1	-	-	-	-	-	-	-	-	-	-	-	1
F53.9 Puerperal mental disorder, unspecified	-	-	-	-	-	-	-	-	-	-	-	-	1	-	-	-	-	1	-	-	-	-	-	-	2
Total	3	-	-	3	26	13	2	-	-	-	11	-	16	6	1	5	-	14	-	-	5	11	2	-	118
F60-F69 Disorders of adult personality and behaviour																									
F60.0 paranoid personality disorder	1	-	-	-	1	-	-	-	-	-	-	-	2	-	-	-	-	-	-	-	-	-	-	-	4
F60.1 Schizoid personality disorder	-	-	-	1	-	-	-	-	-	-	-	-	-	-	-	-	-	-	-	-	-	-	-	-	1
F60.2 Dissocial personality disorder	-	-	-	4	-	-	-	3	-	-	-	-	7	-	1	4	-	-	-	-	-	-	-	-	19
F60.3 Emotionally unstable personality disorder	-	-	-	2	-	1	-	-	-	-	-	-	14	-	-	-	-	-	-	-	-	-	-	-	17
F60.4 Histrionic personality disorder	-	-	-	2	4	-	-	-	-	-	-	-	-	-	-	-	-	-	-	-	-	-	-	-	6
F60.5 Anankastic personality disorder	-	-	-	-	-	-	-	-	-	-	-	-	-	-	-	-	-	-	-	-	1	-	-	-	1
F60.6 Anxious(avoidant)personality disorder	-	-	-	-	-	1	-	-	-	-	-	-	-	-	-	-	-	-	-	-	-	-	-	-	1
F60.9 Personality Disorder, unspecified	6	-	-	1	29	22	-	-	-	-	-	-	12	-	1	-	-	1	-	-	-	-	-	-	72
F63.2 Pathological stealing (Kleptomania)	-	-	-	-	1	-	-	-	-	-	-	-	-	-	-	-	-	-	-	-	-	-	-	-	1
F69 Unspecified disorder of adult personality and behaviour	-	1	-	-	-	5	-	-	-	-	-	-	-	-	-	-	1	-	-	-	-	-	-	-	7
Total	7	1	-	10	35	29	-	3	-	-	-	-	35	-	2	4	1	1	-	-	1	-	-	-	129

Annex 1 Cont'd: Mental Health Out-Patient Attendances by Diagnosis and District, 2016

Diagnosis	Bobirwa	Boteifi	Charleshill	Chobe	Francistown	Gaborone	Gantisi	Goodhope	Kgalagadi North	Kgalleng	Kweneng East	Kweneng West	Lobatse	Mahalapye	Moshupa	Ngamiland	North East	Palapye	Selibe-Phikwe	Serowe	South East	Southern	Tutume	Grand Total
F70-F79 Mental retardation																								
F70.9 Mild mental retardation	-	-	-	-	1	2	-	1	-	1	-	-	19	4	-	-	1	7	-	-	1	1	2	40
F71.9 Moderate mental retardation	-	2	-	-	35	-	-	-	-	-	2	-	3	1	-	-	-	-	-	-	-	-	-	43
F72.9 Severe Mental retardation without mention of impairment of behaviour	-	-	-	-	5	-	-	-	-	-	-	-	-	-	-	-	-	-	-	-	-	-	-	5
F79 Unspecified mental retardation	16	4	-	8	207	38	2	2	-	-	6	4	83	43	7	6	15	51	-	1	29	71	5	598
Total	16	6	-	8	248	40	2	3	-	1	8	4	105	48	7	6	16	58	-	1	30	72	7	686
F80-F89 Disorders of psychological development																								
F81.9 Development disorder of scholastic skills	-	1	-	-	-	8	-	1	-	-	-	-	5	-	-	-	25	9	-	-	1	-	-	50
F84.0 Childhood Autism	-	-	-	1	7	-	-	-	-	-	-	-	19	-	2	1	-	-	-	-	-	8	-	38
F84.1 Atypical autism	-	-	-	-	-	-	-	-	-	-	-	-	5	-	-	-	-	-	-	-	-	5	-	10
F84.9 Pervasive developmental disorder, unspecified	-	-	-	-	-	-	-	-	-	-	-	-	4	-	-	-	-	-	-	-	-	-	-	4
Total	-	1	-	1	7	8	-	1	-	-	-	-	33	-	2	1	25	9	-	-	1	13	-	102
F90-F98 Behavioural and emotional disorders with onset usually occurring in childhood and adolescence																								
F90.0 Disturbance of activity and attention	-	4	-	20	72	20	-	1	-	-	-	2	153	23	-	6	-	10	2	1	2	10	-	326
F90.9 Hyperkinetic disorder, unspecified	1	-	-	-	18	-	-	-	-	-	-	-	16	4	-	2	-	-	-	-	1	-	-	42
F91.0 Conduct disorder, confined to the family context	-	-	-	-	-	-	-	-	-	-	-	-	-	-	-	-	-	-	-	-	-	1	-	1
F91.1 unsocialized conduct disorder	-	-	-	-	-	-	-	-	-	-	-	-	2	-	1	-	-	-	-	-	-	-	-	3
F91.8 Other conduct disorders	-	-	-	-	-	3	-	-	-	-	-	-	1	-	-	-	-	-	-	-	-	-	-	4
F91.9 Conduct disorder, unspecified	-	-	-	6	17	14	-	-	-	-	-	-	19	1	-	-	-	6	-	-	-	9	-	72
F92.9 Mixed disorder of conduct and emotions, unspecified	-	-	-	-	-	1	-	-	-	-	-	-	-	-	-	-	1	-	-	-	-	-	-	2
F93.1 Phobic anxiety disorder of childhood	-	-	-	-	-	-	-	-	-	-	-	-	-	2	-	-	-	-	-	-	-	-	-	2
F93.9 Childhood emotional disorder, unspecified	-	-	-	1	-	-	-	-	-	-	-	-	-	-	1	-	-	-	-	-	-	-	-	2
F98.0 Nonorganic Enuresis	-	-	-	-	2	-	-	-	-	-	-	-	-	-	-	-	-	-	-	-	-	-	-	2
Total	1	4	-	27	109	38	-	1	-	-	-	2	191	30	2	8	1	16	2	1	3	20	-	456
F99 Unspecified mental disorder																								
F99 Mental disorder, not otherwise specified	16	-	-	5	1	27	-	1	1	-	4	2	12	4	4	-	8	3	-	-	3	11	5	107
Total	16	-	-	5	1	27	-	1	1	-	4	2	12	4	4	-	8	3	-	-	3	11	5	107
G40-G47 Episodic and Paroxysmal disorders																								
G40.9 Epilepsy, unspecified	111	6	-	66	423	123	9	78	69	12	53	-	453	57	42	15	177	277	7	2	393	406	5	2,784
G47.4 Narcolepsy and cataplexy	-	-	-	-	-	2	-	-	-	-	-	-	2	-	-	-	-	-	-	-	-	-	-	4
G47.9 Sleep disorder, unspecified	-	-	-	-	-	2	-	-	-	-	-	-	3	2	-	-	-	-	-	-	-	2	-	9
Total	111	6	-	66	423	127	9	78	69	12	53	-	458	59	42	15	177	277	7	2	395	406	5	2,797
R40-R46 Symptoms and signs involving cognition, perception, emotional state and behaviour																								
R41.3 Amnesia, Unspecified	1	-	-	-	-	2	-	-	-	-	-	-	2	-	-	-	-	-	-	-	-	-	-	5
R45.4 Irritability and Anger	-	-	-	-	-	4	-	-	-	-	-	-	-	-	1	-	-	-	-	-	-	-	-	5
R45.8 Other symptoms and signs involving emotional state	-	-	-	1	-	-	-	-	-	-	-	-	1	-	-	-	-	-	-	-	-	-	-	2
Total	1	-	-	1	-	6	-	-	-	-	-	-	3	-	1	-	-	-	-	-	-	-	-	12
Z00.0 General medical examination	-	-	-	-	38	-	-	-	-	-	-	-	-	-	-	-	1	-	-	-	-	-	-	39
Z03.2 Observation for suspected mental and behavioural disorders	2	6	-	21	-	184	-	-	-	-	6	3	27	6	1	6	-	11	1	-	6	32	7	319
Z03.9 Observation for suspected disease or condition, unspecified	1	-	-	-	1	4	-	-	-	-	-	-	-	1	1	-	-	-	-	-	-	2	-	10
Z04.9 Examination and observation for unspecified reason	-	-	-	-	14	89	-	-	-	1	-	-	11	-	1	2	-	-	-	-	-	3	-	121
Total	3	6	-	21	53	277	-	-	-	1	6	3	38	7	3	8	1	11	1	-	6	37	7	489
Z80-Z99 persons with potential health hazards related to family and personal history and certain conditions influencing health status																								
Z91.5 Personal history of self-harm	1	2	-	18	2	25	3	2	-	1	3	-	33	5	3	-	9	18	-	-	2	18	2	147
Total	1	2	-	18	2	25	3	2	-	1	3	-	33	5	3	-	9	18	-	-	2	18	2	147
Grand Total	669	310	31	844	6,832	7,120	261	429	229	165	1,361	100	5,830	1,518	994	576	769	2,733	102	22	2,438	3,756	263	37,352

Annex 2: Mental Health Out-Patient Attendances by Diagnosis and Month, 2016

Diagnosis	Jan	Feb	Mar	Apr	May	Jun	Jul	Aug	Sep	Oct	Nov	Dec	Grand Total
B20-B24 Human immunodeficiency virus (HIV) disease													
B22.0 HIV disease resulting in encephalopathy	21	20	27	22	26	23	24	24	25	17	21	12	262
Total	21	20	27	22	26	23	24	24	25	17	21	12	262
F00-F09 Organic, including symptomatic, mental disorders													
F00.0 Dementia in Alzheimer's disease with early onset	-	-	-	-	-	-	-	1	1	-	-	1	3
F01.0 Vascular dementia of acute onset	-	-	-	1	-	-	-	-	-	-	-	-	1
F01.9 Vascular dementia, unspecified	-	-	1	-	-	1	-	-	2	2	-	1	7
F03 Unspecified Dementia	68	79	61	89	89	104	103	83	76	79	89	65	985
F05.9 Delirium, unspecified	1	1	-	-	1	-	1	1	1	1	2	-	9
F06.0 Organic hallucinosis	2	-	4	3	1	8	2	-	2	-	-	-	22
F06.2 Organic delusional(schizophrenia-like)disorder	5	2	1	4	4	6	4	2	4	7	10	-	49
F06.3 Organic mood(affective)disorder	3	2	1	1	5	2	2	8	3	3	-	-	30
F06.7 Organic emotionally labile(asthenic)disorder	1	1	-	-	-	1	-	-	-	-	-	1	4
F06.8 Epileptic psychosis, unspecified	1	1	1	-	-	1	-	-	-	-	6	-	10
F06.9 Organic brain syndrome, uspecified	7	21	28	23	18	22	23	17	20	18	15	20	232
F09 Unspecified organic or symptomatic mental disorder	7	6	1	10	12	13	3	10	8	6	9	3	88
Total	95	113	98	131	130	158	138	122	117	116	131	91	1,440
F10-F19 Mental and behavioural disorders due to psychoactive substance use													
F10.0 Mental and behavioural disorders due to use of alcohol, acute intoxication	1	1	1	24	13	23	2	-	-	-	13	13	91
F10.1 Mental and behavioural disorders due to use of alcohol, harmful use	20	22	5	16	20	16	45	26	31	36	19	9	265
F10.5 Mental and behavioural disorders due to use of alcohol, psychotic disorder	5	11	16	13	5	9	8	11	9	5	4	3	99
F12.1 Mental and behavioural disorders due to use of cannabinoids, harmful use	72	59	24	51	63	60	69	56	67	53	53	46	673
F12.2 Mental and behavioural disorders due to use of cannabinoids, dependence syndrome	2	1	1	-	-	-	1	4	1	1	1	-	12
F12.5 Mental and behavioural disorders due to use of cannabinoids, psychotic disorder	14	38	52	41	42	38	29	55	47	42	39	14	451
F13.1 Mental and behavioural disorders due to use of sedatives or hypnotics	1	-	1	1	-	-	-	-	-	-	-	-	3
F14.0 Mental and behavioural disorders due to use of cocaine	-	1	-	-	-	-	1	-	-	-	-	-	2
F16.0 Mental and behavioural disorders due to use of hallucinogens	-	1	-	-	-	-	-	-	-	-	-	-	1
F17.2 Mental and behavioural disorders due to use of tobacco	1	-	1	-	-	-	-	-	1	-	-	-	3
F18.1 Mental and behavioural disorders due to use of volatile solvents	1	-	-	-	-	-	2	1	1	-	-	-	5
F19.9 Mental and behavioral disorders due to multiple drug use and use of other psychoactive substances	4	4	10	10	11	10	10	8	11	7	6	3	94
Total	121	138	111	156	154	156	167	161	168	144	135	88	1,699
F20-F29 Schizophrenia, schizotypal and delusional disorders													
F20.0 Paranoid schizophrenia	2	2	2	-	-	2	-	-	1	-	1	1	11
F20.1 hebephrenic schizophrenia	2	1	-	2	1	-	-	-	1	-	-	-	7
F20.2 Catatonic schizophrenia	1	-	-	-	-	-	-	-	-	-	-	-	1
F20.3 Undifferentiated schizophrenia	-	-	-	-	-	-	-	1	-	-	-	2	3
F20.5 Residual schizophrenia	-	-	-	-	1	-	-	3	3	-	-	-	7
F20.9 Schizophrenia, unspecified	1,282	1,308	1,308	1,539	1,475	1,641	1,301	1,723	1,404	1,368	1,440	1,058	16,847
F21.0 Schizotypal disorder	-	-	1	-	-	1	1	1	1	-	-	-	5
F22.0 Delusional disorder	2	7	3	8	10	5	21	4	9	5	4	6	84
F22.8 Other persistent delusional disorder	-	-	-	-	-	-	1	-	-	-	-	-	1
F22.9 Persistent delusional disorder, unspecified	3	1	1	2	-	-	1	-	3	-	1	-	12
F23.0 Acute and polymorphic psychotic disorder without symptoms of schizophrenia	1	-	1	2	-	-	-	-	3	-	-	-	7
F23.1 Acute and polymorphic psychotic disorder with symptoms of schizophrenia	-	-	-	-	-	-	1	-	-	-	1	-	2
F23.2 Acute schizophrenia-like psychotic disorder	-	1	-	-	-	-	-	-	-	-	-	-	1
F23.9 Acute and transient psychotic disorder, unspecified	72	74	71	128	124	148	156	127	109	110	84	71	1,274
F24.0 Induced delusional disorder	-	1	2	9	12	9	-	1	6	5	5	6	56
F25.0 Schizoaffective disorder, manic type	1	-	2	-	-	-	-	-	2	-	-	-	5
F25.1 Schizoaffective disorder, depressive type	-	-	-	-	2	-	-	-	-	-	-	-	2
F25.2 Schizoaffective disorder, mixed type	-	-	-	-	-	-	-	-	1	-	-	1	2
F25.9 Schizoaffective disorder, unspecified	146	133	122	203	195	211	196	190	168	183	167	112	2,026
F28.0 Chronic hallucinatory psychosis	1	-	-	-	1	1	1	-	-	-	3	1	8
F29.9 Unspecified Non organic Psychosis	52	44	68	35	52	47	40	45	55	34	50	33	555
Total	1,565	1,572	1,581	1,928	1,873	2,065	1,719	2,095	1,766	1,705	1,756	1,291	20,916

Annex 2 Cont'd: Mental Health Out-Patient Attendances by Diagnosis and Month, 2016

Diagnosis	Jan	Feb	Mar	Apr	May	Jun	Jul	Aug	Sep	Oct	Nov	Dec	Grand Total
F30-F39 Mood (affective) disorders													
F30.0 Hypomania	1	3	-	3	4	7	6	4	4	2	5	4	43
F30.2 Mania with psychotic symptoms	-	-	-	-	-	-	-	-	-	-	1	-	1
F30.8 Other manic episodes	-	-	-	-	-	-	-	1	-	-	-	-	1
F30.9 Manic episode, unspecified	9	6	9	7	8	15	13	5	10	8	10	4	104
F31.9 Bipolar affective disorder, unspecified	100	126	130	156	183	179	177	197	141	157	153	112	1,811
F32.0 Mild depressive episode	2	2	-	4	1	4	-	1	2	3	-	-	19
F32.1 Moderate depressive episode	1	-	-	1	1	2	1	1	-	-	-	-	7
F32.2 Severe depressive episode without psychotic symptoms	1	3	-	-	1	-	-	-	2	-	1	-	8
F32.3 Severe depressive episode with psychotic symptoms	7	2	2	7	9	4	-	7	6	5	7	-	56
F32.8 Other depressive episodes	2	-	-	-	-	1	-	-	-	1	-	-	4
F32.9 Depressive episode, unspecified	272	269	317	405	397	390	413	372	382	356	394	255	4,222
F33.9 Recurrent depressive disorder, unspecified	-	-	-	-	-	-	-	1	-	-	-	1	2
F34.0 Cyclothymia	-	-	-	-	-	-	-	1	-	-	1	-	2
F34.9 Persistent mood(affective) disorder, unspecified	-	-	-	1	-	-	-	-	-	-	-	-	1
F38.0 Other Single Mood (affective)Disorder	-	-	-	1	1	2	-	-	-	2	1	-	7
F38.1 Other recurrent mood(affective)disorders	-	-	-	-	-	-	-	1	-	-	-	-	1
F38.8 Other specified mood(affective)disorders	-	-	-	-	-	-	-	-	-	2	-	-	2
F39.9 Unspecified mood(affective)disorder	-	1	1	-	-	2	1	-	-	-	-	-	5
Total	395	412	459	585	605	606	611	591	547	536	573	376	6,296
F40-F48 Neurotic, stress-related and somatoform disorders													
F40.0 Agoraphobia	-	1	-	1	-	-	1	-	2	-	2	-	7
F40.1 Social Phobias	-	-	-	1	-	2	1	1	1	-	-	-	6
F40.2 Specific(isolated)phobias	-	-	-	-	-	-	1	1	-	-	-	-	2
F40.9 Phobic anxiety disorder, unspecified	2	7	5	3	4	3	2	10	14	3	15	2	70
F41.0 Panic disorder(episodic paroxysmal anxiety)	1	1	2	4	5	3	1	7	4	2	-	1	31
F41.1 Generalized anxiety disorder	3	1	2	1	3	1	2	9	1	2	2	2	29
F41.2 Mixed anxiety and depressive disorder	-	1	-	-	1	-	-	-	-	-	-	-	2
F41.8 Other specified anxiety disorders	-	-	-	1	1	-	-	1	-	-	-	-	3
F41.9 Anxiety disorder, unspecified	20	25	24	43	25	26	43	19	23	31	19	16	314
F42.9 Obsessive-compulsive disorder, unspecified	3	1	1	1	3	1	-	3	2	2	-	-	17
F43.0 Acute stress reaction	19	21	21	40	43	21	26	41	31	18	36	21	338
F43.1 Post-traumatic stress disorder	6	6	16	13	11	15	9	10	9	3	6	-	104
F43.2 Adjustment disorders	48	49	15	25	41	38	36	49	30	72	35	9	447
F43.8 Other reactions to severe stress	-	-	1	-	-	-	-	2	-	-	-	-	3
F43.9 Reactions to severe stress	26	20	39	22	19	15	13	11	10	22	7	10	214
F44.0 Dissociative amnesia	-	-	1	2	-	-	1	-	-	-	-	-	4
F44.8 Other dissociative(conversion)disorders	-	-	1	1	-	-	1	-	-	-	-	-	3
F44.9 Dissociative(conversion)disorder, unspecified	2	3	3	3	3	1	2	3	-	4	-	1	25
F45.0 Somatization disorders	-	5	3	4	3	4	2	1	-	9	3	-	34
F45.9 Somatoform disorder, unspecified	4	5	1	6	1	1	1	5	6	2	6	5	43
Total	134	146	135	171	163	131	142	173	133	170	131	67	1,696
F50-F59 Behavioural syndromes associated with physiological disturbances and physical factors													
F50.9 Eating disorder, unspecified	-	1	1	-	-	-	-	-	-	-	-	-	2
F51.0 Nonorganic insomnia	-	1	1	2	-	-	2	-	-	-	-	1	7
F51.3 Sleepwalking (Somnambulism)	-	-	-	-	3	2	1	1	2	1	1	1	12
F51.4 Sleep terrors(night terrors)	-	-	-	-	-	2	-	-	-	-	-	-	2
F51.5 Nightmares	1	-	-	-	-	-	1	-	-	-	-	-	2
F51.9 Nonorganic sleep disorder, unspecified	1	4	6	-	3	-	1	2	1	1	-	-	19
F53.1 Severe mental and behavioural disorders associated with the puerperium, not elsewhere classified	6	6	5	4	3	9	10	6	10	3	6	3	71
F53.8 Other mental and behavioural disorders associated with the puerperium, not elsewhere classified	-	-	-	-	-	-	1	-	-	-	-	-	1
F53.9 Puerperal mental disorder, unspecified	-	-	1	-	-	-	-	-	-	1	-	-	2
Total	8	12	14	6	9	13	16	9	13	6	7	5	118

Annex 2 Cont'd: Mental Health Out-Patient Attendances by Diagnosis and Month, 2016

Diagnosis	Jan	Feb	Mar	Apr	May	Jun	Jul	Aug	Sep	Oct	Nov	Dec	Grand Total
F60-F69 Disorders of adult personality and behaviour													
F60.0 paranoid personality disorder	1	-	1	-	-	-	1	-	-	-	1	-	4
F60.1 Schizoid personality disorder	-	-	-	-	-	-	-	-	-	-	-	1	1
F60.2 Dissocial personality disorder	3	1	2	3	3	-	1	1	3	-	-	2	19
F60.3 Emotionally unstable personality disorder	3	3	2	1	4	-	1	-	1	1	1	-	17
F60.4 Histrionic personality disorder	2	-	-	-	-	-	1	2	1	-	-	-	6
F60.5 Anankastic personality disorder	1	-	-	-	-	-	-	-	-	-	-	-	1
F60.6 Anxious(avoidant)personality disorder	-	-	-	1	-	-	-	-	-	-	-	-	1
F60.9 Personality Disorder, unspecified	2	3	8	9	13	12	7	5	2	5	2	4	72
F63.2 Pathological stealing (Kleptomania)	-	-	-	-	-	-	1	-	-	-	-	-	1
F69.9 Unspecified disorder of adult personality and behaviour	1	5	-	-	-	-	-	-	-	-	1	-	7
Total	13	12	13	14	20	12	12	8	7	6	5	7	129
F70-F79 Mental retardation													
F70.9 Mild mental retardation	1	19	8	3	1	-	1	4	-	3	-	-	40
F71.9 Moderate mental retardation	-	-	-	6	8	7	2	5	6	2	3	4	43
F72.9 Severe Mental retardation without mention of impairment of behaviour	-	-	-	1	-	-	-	-	-	1	2	1	5
F79.9 Unspecified mental retardation	46	22	35	63	72	52	77	42	38	43	66	42	598
Total	47	41	43	73	81	59	80	51	44	49	71	47	686
F80-F89 Disorders of psychological development													
F81.9 Development disorder of scholastic skills	3	9	2	3	4	10	1	12	3	3	-	-	50
F84.0 Childhood Autism	-	1	-	7	10	5	5	1	2	2	3	2	38
F84.1 Atypical autism	1	-	2	3	-	2	1	-	1	-	-	-	10
F84.9 Pervasive developmental disorder, unspecified	1	-	2	-	1	-	-	-	-	-	-	-	4
Total	5	10	6	13	15	17	7	13	6	5	3	2	102
F90-F98 Behavioural and emotional disorders with onset usually occurring in childhood and adolescence													
F90.0 Disturbance of activity and attention	28	8	11	30	35	28	28	44	29	36	29	20	326
F90.9 Hyperkinetic disorder, unspecified	1	11	1	2	-	2	20	2	1	-	2	-	42
F91.0 Conduct disorder, confined to the family context	-	-	-	-	-	-	-	-	-	-	-	1	1
F91.1 unsocialized conduct disorder	-	-	-	-	-	1	-	1	-	1	-	-	3
F91.8 Other conduct disorders	-	-	-	2	1	1	-	-	-	-	-	-	4
F91.9 Conduct disorder, unspecified	4	2	3	9	6	7	6	12	6	4	11	2	72
F92.9 Mixed disorder of conduct and emotions, unspecified	-	-	-	-	1	-	-	-	-	-	-	1	2
F93.1 Phobic anxiety disorder of childhood	-	-	-	-	-	-	-	-	2	-	-	-	2
F93.9 Childhood emotional disorder, unspecified	-	-	-	-	-	1	1	-	-	-	-	-	2
F98.0 Nonorganic Enuresis	-	-	-	-	-	-	2	-	-	-	-	-	2
Total	33	21	15	43	43	40	57	59	38	41	42	24	456

Annex 2 Cont'd: Mental Health Out-Patient Attendances by Diagnosis and Month, 2016

Diagnosis	Jan	Feb	Mar	Apr	May	Jun	Jul	Aug	Sep	Oct	Nov	Dec	Grand Total
F99 Unspecified mental disorder													
F99 Unspecified mental disorder	12	12	7	9	18	7	5	9	7	2	15	4	107
Total	12	12	7	9	18	7	5	9	7	2	15	4	107
G40-G47 Episodic and Paroxysmal disorders													
G40.9 Epilepsy, unspecified	187	218	243	242	274	268	226	232	231	220	258	185	2,784
G47.4 Narcolepsy and cataplexy	-	-	2	-	1	-	-	-	-	-	1	-	4
G47.9 Sleep disorder, unspecified	2	1	1	-	2	-	-	1	1	-	1	-	9
Total	189	219	246	242	277	268	226	233	232	220	260	185	2,797
R40-R46 Symptoms and signs involving cognition, perception, emotional state and behaviour													
R41.3 Amnesia, Unspecified	-	1	-	2	2	-	-	-	-	-	-	-	5
R45.4 Irritability and Anger	1	1	1	-	1	-	-	1	-	-	-	-	5
R45.8 Other symptoms and signs involving emotional state	-	-	-	-	-	-	-	1	1	-	-	-	2
Total	1	2	1	2	3	-	-	2	1	-	-	-	12
Z00-Z13 Persons encountering health services for examination and investigation													
Z00.0 General medical examination	-	1	-	7	7	11	8	1	-	-	4	-	39
Z03.2 Observation for suspected mental and behavioural disorders	48	25	28	44	19	23	21	21	28	18	34	10	319
Z03.9 Observation for suspected disease or condition, unspecified	-	2	1	-	-	-	-	-	1	5	-	1	10
Z04.9 Examination and observation for unspecified reason	1	3	2	5	30	8	8	22	12	19	3	8	121
Total	49	31	31	56	56	42	37	44	41	42	41	19	489
Z80-Z99 persons with potential health hazards related to family and personal history and certain conditions influencing health status													
Z91.5 Personal history of self-harm	17	14	13	17	19	12	10	9	6	14	13	3	147
Total	17	14	13	17	19	12	10	9	6	14	13	3	147
Grand Total	2,705	2,775	2,800	3,468	3,492	3,609	3,251	3,603	3,151	3,073	3,204	2,221	37,352

Annex 3: Mental Health Attendances by Diagnosis; Age Groups and Sex, 2016

ICD Code	Diagnosis	0-14		15-24		25-44		45+		Sub total M	Sub total F	Total
		M	F	M	F	M	F	M	F			
B20-B24	Human immunodeficiency virus (HIV) disease											
B22.0	HIV disease resulting in encephalopathy	-	2	4	5	44	110	50	47	98	164	262
	Total	-	2	4	5	44	110	50	47	98	164	262
F00-F09	Organic, including symptomatic, mental disorders											
F00.0	Dementia in Alzheimer's disease with early onset	-	-	-	-	-	-	-	3	-	3	3
F01.0	Vascular dementia of acute onset	-	-	-	-	1	-	-	-	1	-	1
F01.9	Vascular dementia, unspecified	1	-	-	-	-	-	4	2	5	2	7
F03	Unspecified Dementia	-	-	1	1	14	13	318	638	333	652	985
F05.9	Delirium, unspecified	-	-	1	-	-	3	1	4	2	7	9
F06.0	Organic hallucinosis	-	-	-	4	5	6	-	7	5	17	22
F06.2	Organic delusional(schizophrenia-like)disorder	-	-	-	1	10	15	5	18	15	34	49
F06.3	Organic mood(affective)disorder	-	4	-	2	6	11	2	5	8	22	30
F06.7	Organic emotionally labile(asthenic)disorder	-	-	2	-	1	1	-	-	3	1	4
F06.8	Epileptic psychosis, unspecified	-	-	2	-	5	2	1	-	8	2	10
F06.9	Organic brain syndrome, uspecified	1	-	7	4	51	82	32	55	91	141	232
F09	Unspecified organic or symptomatic mental disorder	1	1	2	9	15	44	6	10	24	64	88
	Total	3	5	15	21	108	177	369	742	495	945	1,440
F10-F19	Mental and behavioural disorders due to psychoactive substance use											
F10.0	Mental and behavioural disorders due to use of alcohol, acute intoxication	-	-	16	-	38	5	30	2	84	7	91
F10.1	Mental and behavioural disorders due to use of alcohol, harmful use	1	1	34	3	132	16	58	20	225	40	265
F10.5	Mental and behavioural disorders due to use of alcohol, psychotic disorder	-	-	11	-	56	5	18	9	85	14	99
F12.1	Mental and behavioural disorders due to use of cannabinoids, harmful use	6	1	284	16	319	31	14	2	623	50	673
F12.2	Mental and behavioural disorders due to use of cannabinoids, dependence syndrome	-	-	4	-	7	1	-	-	11	1	12
F12.5	Mental and behavioural disorders due to use of cannabinoids, psychotic disorder	2	1	145	14	256	17	14	2	417	34	451
F13.1	Mental and behavioural disorders due to use of sedatives or hypnotics	-	-	-	-	2	-	1	-	3	-	3
F14.0	Mental and behavioural disorders due to use of cocaine	-	-	-	-	1	-	-	1	1	1	2
F16.0	Mental and behavioural disorders due to use of hallucinogens	-	-	-	-	1	-	-	-	1	-	1
F17.2	Mental and behavioural disorders due to use of tobacco	-	-	1	-	1	-	1	-	3	-	3
F18.1	Mental and behavioural disorders due to use of volatile solvents	-	-	-	-	5	-	-	-	5	-	5
F19.9	Mental and behavioral disorders due to multiple drug use and use of other psychoactive substances	2	1	32	8	38	5	7	1	79	15	94
	Total	11	4	527	41	856	80	143	37	1,537	162	1,699
F20.1	Hebephrenic schizophrenia	-	-	-	-	5	2	-	-	5	2	7
F20.2	Catatonic schizophrenia	-	-	-	-	1	-	-	-	1	-	1
F20.3	Undifferentiated schizophrenia	-	-	-	1	1	-	-	1	1	2	3
F20.5	Residual schizophrenia	-	-	-	-	5	1	-	1	5	2	7
F20.9	Schizophrenia, unspecified	19	9	872	333	6,104	2,452	3,253	3,805	10,248	6,599	16,847
F21.0	Schizotypal disorder	-	-	2	-	-	-	-	3	2	3	5
F22.0	Delusional disorder	-	1	4	2	16	25	7	29	27	57	84
F22.8	Other persistent delusional disorder	-	-	-	-	-	1	-	-	-	1	1
F22.9	Persistent delusional disorder, unspecified	-	-	1	-	3	4	2	2	6	6	12
F23.0	Acute and polymorphic psychotic disorder without symptoms of schizophrenia	-	-	2	-	1	1	2	1	5	2	7
F23.1	Acute and polymorphic psychotic disorder with symptoms of schizophrenia	-	-	-	1	-	1	-	-	-	2	2
F23.2	Acute schizophrenia-like psychotic disorder	-	-	1	-	-	-	-	-	1	-	1
F23.9	Acute and transient psychotic disorder, unspecified	10	8	185	150	379	302	88	152	662	612	1,274
F24.0	Induced delusional disorder	-	-	1	1	26	6	11	11	38	18	56
F25.0	Schizoaffective disorder, manic type	-	-	1	2	1	-	1	-	3	2	5
F25.1	Schizoaffective disorder, depressive type	-	-	-	2	-	-	-	-	-	2	2
F25.2	Schizoaffective disorder, mixed type	-	-	-	-	-	1	1	-	1	1	2
F25.9	Schizoaffective disorder, unspecified	1	1	82	66	556	634	242	444	881	1,145	2,026
F28.0	Chronic hallucinatory psychosis	-	-	-	-	3	2	2	1	5	3	8
F29.9	Unspecified Non organic Psychosis	6	10	60	40	137	126	57	119	260	295	555
	Total	36	29	1,212	598	7,243	3,560	3,667	4,571	12,158	8,758	20,916

Annex 3 Cont'd: Mental Health Attendances by Diagnosis; Age Groups and Sex, 2016

ICD Code	Diagnosis	0-14		15-24		25-44		45+		Sub total M	Sub total F	Total
		M	F	M	F	M	F	M	F			
F30-F39 Mood (affective) disorders												
F30.0	Hypomania	-	-	1	1	16	19	2	4	19	24	43
F30.2	Mania with psychotic symptoms	-	-	-	-	1	-	-	-	1	-	1
F30.8	Other manic episodes	-	-	-	-	-	1	-	-	-	1	1
F30.9	Manic episode, unspecified	-	1	4	8	21	36	2	32	27	77	104
F31.9	Bipolar affective disorder, unspecified	2	3	125	130	480	739	99	233	706	1,105	1,811
F32.0	Mild depressive episode	-	-	1	2	5	3	1	7	7	12	19
F32.1	Moderate depressive episode	-	-	-	-	3	3	-	1	3	4	7
F32.2	Severe depressive episode without psychotic symptoms	-	-	-	-	2	3	1	2	3	5	8
F32.3	Severe depressive episode with psychotic symptoms	-	-	-	4	5	18	2	27	7	49	56
F32.8	Other depressive episodes	-	-	-	2	-	2	-	-	-	4	4
F32.9	Depressive episode, unspecified	4	9	144	301	596	1,363	269	1,536	1,013	3,209	4,222
F33.9	Recurrent depressive disorder, unspecified	-	-	-	1	-	1	-	-	-	2	2
F34.0	Cyclothymia	1	-	-	-	-	1	-	-	1	1	2
F34.9	Persistent mood(affective) disorder, unspecified	-	-	-	-	-	1	-	-	-	1	1
F38.0	Other Single Mood (affective)Disorder	-	-	-	-	-	-	-	7	-	7	7
F38.1	Other recurrent mood(affective)disorders	-	-	-	-	-	-	-	1	-	1	1
F38.8	Other specified mood(affective)disorders	-	-	1	-	1	-	-	-	2	-	2
F39.9	Unspecified mood(affective)disorder	-	-	-	-	-	2	1	2	1	4	5
Total		7	13	276	449	1,130	2,192	377	1,852	1,790	4,506	6,296
F40-F49 Anxiety disorders												
F40.0	Agoraphobia	1	-	1	-	2	2	1	-	5	2	7
F40.1	Social Phobias	1	-	1	1	2	1	-	-	4	2	6
F40.2	Specific(isolated)phobias	-	-	-	-	1	1	-	-	1	1	2
F40.9	Phobic anxiety disorder, unspecified	3	3	5	7	19	15	6	12	33	37	70
F41.0	Panic disorder(episodic paroxysmal anxiety)	1	-	1	11	3	12	-	3	5	26	31
F41.1	Generalized anxiety disorder	-	1	2	3	8	3	6	6	16	13	29
F41.2	Mixed anxiety and depressive disorder	-	-	-	-	2	-	-	-	2	-	2
F41.8	Other specified anxiety disorders	-	-	-	1	-	1	-	1	-	3	3
F41.9	Anxiety disorder, unspecified	3	5	32	38	68	88	14	66	117	197	314
F42.9	Obsessive-compulsive disorder, unspecified	-	-	-	10	2	4	1	-	3	14	17
F43.0	Acute stress reaction	7	7	14	38	54	129	32	57	107	231	338
F43.1	Post-traumatic stress disorder	3	4	3	17	23	36	3	15	32	72	104
F43.2	Adjustment disorders	6	6	36	52	107	149	36	55	185	262	447
F43.8	Other reactions to severe stress	-	-	-	-	1	1	-	1	1	2	3
F43.9	Reactions to severe stress	3	1	10	22	30	93	9	46	52	162	214
F44.0	Dissociative amnesia	-	-	-	-	-	2	1	1	1	3	4
F44.8	Other dissociative(conversion)disorders	-	-	-	-	1	1	-	1	1	2	3
F44.9	Dissociative(conversion)disorder, unspecified	-	4	1	12	-	8	-	-	1	24	25
F45.0	Somatization disorders	-	-	1	5	7	10	3	8	11	23	34
F45.9	Somatoform disorder, unspecified	1	1	3	4	11	8	2	13	17	26	43
Total		29	32	110	221	341	564	114	285	594	1,102	1,696
F50-F59 Behavioural syndromes associated with physiological disturbances and physical factors												
F50.9	Eating disorder, unspecified	-	-	-	-	-	2	-	-	-	2	2
F51.0	Nonorganic insomnia	1	-	-	1	1	2	-	2	2	5	7
F51.3	Sleepwalking (Somnambulism)	-	-	-	-	6	-	3	3	9	3	12
F51.4	Sleep terrors(night terrors)	-	-	-	-	1	-	-	1	1	1	2
F51.5	Nightmares	-	-	1	-	-	-	-	1	1	1	2
F51.9	Nonorganic sleep disorder, unspecified	-	1	1	-	11	-	4	2	16	3	19
F53.1	Severe mental and behavioural disorders associated with the puerperium, not elsewhere classified	-	-	-	36	1	33	-	1	1	70	71
F53.8	Other mental and behavioural disorders associated with the puerperium, not elsewhere classified	-	-	-	-	-	1	-	-	-	1	1
F53.9	Puerperal mental disorder, unspecified	-	-	-	1	-	1	-	-	-	2	2
Total		1	1	2	38	20	39	7	10	30	88	118

Annex 3 Cont'd: Mental Health Attendances by Diagnosis; Age Groups and Sex, 2016

ICD Code	Diagnosis	0-14		15-24		25-44		45+		Sub total M	Sub total F	Total
		M	F	M	F	M	F	M	F			
F60-F69 Disorders of adult personality and behaviour												
F60.0	paranoid personality disorder	-	-	-	2	-	2	-	-	-	4	4
F60.1	Schizoid personality disorder	-	-	-	-	-	1	-	-	-	1	1
F60.2	Dissocial personality disorder	-	-	5	-	11	-	1	2	17	2	19
F60.3	Emotionally unstable personality disorder	-	-	2	5	4	6	-	-	6	11	17
F60.4	Histrionic personality disorder	-	-	-	3	1	2	-	-	1	5	6
F60.5	Anankastic personality disorder	-	1	-	-	-	-	-	-	-	1	1
F60.6	Anxious(avoidant)personality disorder	-	-	-	-	-	-	-	1	-	1	1
F60.9	Personality Disorder, unspecified	5	2	7	15	26	12	2	3	40	32	72
F63.2	Pathological stealing (Kleptomania)	-	-	-	-	1	-	-	-	1	-	1
F69	Unspecified disorder of adult personality and behaviour	-	-	1	1	2	2	1	-	4	3	7
Total		5	3	15	26	45	25	4	6	69	60	129
F70-F79 Mental retardation												
F70.9	Mild mental retardation	8	2	4	10	7	6	1	2	20	20	40
F71.9	Moderate mental retardation	2	7	2	10	8	12	-	2	12	31	43
F72.9	Severe Mental retardation without mention of impairment of behaviour	3	1	-	1	-	-	-	-	3	2	5
F79.9	Unspecified mental retardation	51	28	130	87	112	124	26	40	319	279	598
Total		64	38	136	108	127	142	27	44	354	332	686
F80-F89 Disorders of psychological development												
F81.9	Development disorder of scholastic skills	10	7	11	4	7	9	2	-	30	20	50
F84.0	Childhood Autism	22	14	1	1	-	-	-	-	23	15	38
F84.1	Atypical autism	3	-	1	-	-	-	6	-	10	-	10
F84.9	Pervasive developmental disorder, unspecified	3	-	1	-	-	-	-	-	4	-	4
Total		38	21	14	5	7	9	8	-	67	35	102
F90-F98 Behavioural and emotional disorders with onset usually occurring in childhood and adolescence												
F90.0	Disturbance of activity and attention	215	54	42	5	2	7	-	1	259	67	326
F90.9	Hyperkinetic disorder, unspecified	29	8	5	-	-	-	-	-	34	8	42
F91.0	Conduct disorder, confined to the family context	1	-	-	-	-	-	-	-	1	-	1
F91.1	unsocialized conduct disorder	1	-	1	1	-	-	-	-	2	1	3
F91.8	Other conduct disorders	-	-	-	-	2	1	-	1	2	2	4
F91.9	Conduct disorder, unspecified	37	8	14	8	5	-	-	-	56	16	72
F92.9	Mixed disorder of conduct and emotions, unspecified	-	-	1	-	-	1	-	-	1	1	2
F93.1	Phobic anxiety disorder of childhood	-	2	-	-	-	-	-	-	-	2	2
F93.9	Childhood emotional disorder, unspecified	-	2	-	-	-	-	-	-	-	2	2
F98.0	Nonorganic Enuresis	-	1	1	-	-	-	-	-	1	1	2
Total		283	75	64	14	9	9	-	2	356	100	456

Annex 3 Cont'd: Mental Health Attendances by Diagnosis; Age Groups and Sex, 2016

ICD Code	Diagnosis	0-14		15-24		25-44		45+		Sub total M	Sub total F	Total
		M	F	M	F	M	F	M	F			
F99	Unspecified mental disorder											
F99	Mental disorder, not otherwise specified	7	4	10	7	19	25	15	20	51	56	107
	Total	7	4	10	7	19	25	15	20	51	56	107
G40-G47	Episodic and Paroxysmal disorders											
G40.9	Epilepsy, unspecified	135	75	287	190	856	527	410	304	1,688	1,096	2,784
G47.4	Narcolepsy and cataplexy	1	-	2	-	1	-	-	-	4	-	4
G47.9	Sleep disorder, unspecified	-	1	1	-	3	2	2	-	6	3	9
	Total	136	76	290	190	860	529	412	304	1,698	1,099	2,797
R40-R46	Symptoms and signs involving cognition, perception, emotional state and behaviour											
R41.3	Amnesia, Unspecified	-	-	1	-	1	-	1	2	3	2	5
R45.4	Irritability and Anger	-	1	1	-	2	1	-	-	3	2	5
R45.8	Other symptoms and signs involving emotional state	-	-	1	1	-	-	-	-	1	1	2
	Total	-	1	3	1	3	1	1	2	7	5	12
Z00-Z13	Persons encountering health services for examination and investigation											
Z00.0	General medical examination	-	1	-	1	7	9	4	17	11	28	39
Z03.2	Observation for suspected mental and behavioural disorders	16	13	39	42	71	63	36	39	162	157	319
Z03.9	Observation for suspected disease or condition, unspecified	-	-	1	-	4	2	1	2	6	4	10
Z04.9	Examination and observation for unspecified reason	1	3	14	23	30	35	6	9	51	70	121
	Total	17	17	54	66	112	109	47	67	230	259	489
Z80-Z99	persons with potential health hazards related to family and personal history and certain conditions influencing health status											
Z91.5	Personal history of self-harm	6	4	14	54	30	36	2	1	52	95	147
	Total	6	4	14	54	30	36	2	1	52	95	147
	Grand Total	643	325	2,746	1,844	10,954	7,607	5,243	7,990	19,586	17,766	37,352



Private Bag 0024, Gaborone
Tel: 3671300 **Fax:** 3952201
Toll Free: 0800 600 200

Private Bag F193,
Francistown
Tel. 241 5848, **Fax.** 241 7540

Private Bag 32
Chanzi
Tel: 371 5723 **Fax:** 659 7506

Private Bag 47
Maun
Tel: 371 5716 **Fax:** 686 4327

E-mail: info@statsbots.org.bw
Website: <http://www.statsbots.org.bw>



STATISTICS BOTSWANA