



Eye Out-Patient Statistics Report 2019

Private Bag 0024
Gaborone
Tel: 3671300 **Fax:** 3952201
Toll Free: 0800 600 200

Private Bag F193,
City of Francistown
Tel: 241 5848,
Fax: 241 7540

Private Bag 32
Ghanzi
Tel: 371 5723
Fax: 659 7506

Private Bag 47
Maun
Tel: 371 5716
Fax: 686 4327

E-mail: info@statsbots.org.bw **Website:** <http://www.statsbots.org.bw>



STATISTICS BOTSWANA

Published by

STATISTICS BOTSWANA

GABORONE (HEAD OFFICE)

Private Bag 0024
Gaborone
Tel: 3671300 Fax: 3952201
Toll Free: 0800 600 200

FRANCISTOWN OFFICE

Private Bag F193,
Francistown
Tel: 241 5848,
Fax: 241 7540

MAUN OFFICE

Private Bag 47
Maun
Tel: 371 5716
Fax: 686 4327

GHANZI OFFICE

Private Bag 32 Ghanzi
Tel: 371 5723
Fax: 659 7506

E-mail: info@statsbots.org.bw

Website: <http://www.statsbots.org.bw>

Copyright © Statistics Botswana 2023



A close-up, high-resolution photograph of a human eye. The eye is the central focus, with the iris reflecting a serene forest scene with tall trees and a clear sky. The surrounding skin and eyelashes are visible, adding texture and depth to the image. The overall color palette is muted, with a dark blue overlay at the bottom.

Eye Out-Patient
Statistics Report 2019

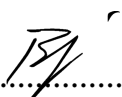
PREFACE

This statistical report analyses the eye disease/conditions diagnosed at health facilities of Botswana which provided eye services for Out-Patients as new or Repeat attendances in 2019. The report states the major causes of eye Out-Patient disease by place, period, sex and age groups. The information provided will help in health policy formulation, monitoring and evaluation of eye diseases/conditions in Botswana.

Statistics Botswana's Health Statistics Unit (HSU), is attached to the Ministry of Health to provide statistical support to facilitate collection, analysis and dissemination of quality official statistics for evidence-based decision making, program monitoring and evaluation.

Statistics Botswana has since decided to produce different Health statistics reports instead of encompassing eight different data sets being; EyeOut-Patient, Psychiatric Out-Patient, General Out-Patient, Health Personnel, Maternal Mortality Ratio, In-Patient General Mortality, General Morbidity and Obstetrics into a single report, which normally delayed production of reports because of the time required to analyse the different data sets. For more information contact the Directorate of Stakeholder Relations at 3671300. All Statistics Botswana outputs/publications are available on the website at www.statsbots.org.bw.

We sincerely thank all stakeholders involved in the formulation of this brief for their continued support as we strive to better serve users with our statistical products and services.



.....
Dr Burton S. Mguni
Statistician General
January 2024

Table of contents

Preface.....	4
Table of Contents.....	5
List of tables.....	5
List of Figures.....	5
1. Introduction.....	6
2. Findings.....	6
2.1. Botswana Population by age and sex,2019.....	6
2.2. Age Sex Structure of Eye Outpatients Attendances.....	7
2.3. Eye Outpatient by Health District.....	8
2.4. Eye Outpatient attendances by main blocks.....	9
2.5. Major eye disease.....	9
2.6. Major Eye Diseases New and Repeat.....	10
2.7. Major eye Diseases by sex.....	10
3.0 Eye Injuries.....	11
3.1. Age sex structure of Eye Injuries.....	11
3.2. Major Eye Injuries.....	12
Appendices.....	13

LIST OF TABLES

Table 1: Population by age and Sex. 2019.....	6
Table 2: Percentage distribution of Eye outpatient Attendance by Health Districts, 2015.....	8
Table 3: Eye outpatient attendance by Blocks.....	9
Table 4: Top ten Eye outpatient diseases/conditions - 2019.....	9
Table 5: Major Eye diseases outpatient attendance by New and Repeat, 2015.....	10
Table 6: Major Eye outpatient attendance among Males and Females, 2019.....	11
Table 7: Major eye outpatient Injuries, 2019.....	12

LIST OF FIGURES

Figure 1: Age Sex structure of Eye Outpatient Attendance, 2019.....	7
Figure 2: Age Sex structure of Eye Injuries.....	11

1.0 Introduction

Eye function renders human the sense of sight. They convert light into electrical signals. Afterwards, the brain deciphers these electrical signals into images. Eyes help us view our surroundings and enable us to see colours. Eyes also help us see near as well as distant objects. These extremely delicate organs can fall prey to different eye problems due to allergic factors, unhygienic conditions, injuries and the old age. According to the 2011 Population and Housing Census, 3.7 percent of the population of Botswana had some form of disability and the most prevalent form of disability was visual impairment, which constituted 48.6 percent of all disabilities. Realizing the importance of the eye, this report covers all Out-Patient diseases and conditions that threatened eye health in 2019. Specifically the report covers trends, major diseases by age, sex, month and district.

1.2 Data Sources

This publication is based on administrative records from health facilities using the Eye Diseases Out-Patient Register (MH 3028/Rev 2003) in Botswana(Annex 2). The form is completed by health facilities which provide eye services for out-patients.

A line in the register with information on date, sex, age, main condition/disorder, and ICD-10 code are recorded. For each consultation, the main condition/disorder should be specified as to whether it is a new or repeat episode. A new consultation refers to a case where a patient is seeking health services for a condition for the first time. A repeat refers to a case where a patient is getting a service for the same condition for the second time, or several times. An episode of contact with health services for reasons other than illness may also be recorded under appropriate main condition. The information is collected on monthly basis from health facilities.

In WHO's ICD-10 Volume 2, the main condition is defined as; The condition, diagnosed at the end of the episode of health care, primary responsible for the patients need for treatment or investigation. If there is more than one such condition, the one held most responsible for the greatest use of resources should be selected. If no diagnosis was made, the main symptoms, abnormal finding, or problem should be selected as the main condition.

2. Findings

2.1. Botswana Population by Age and Sex, 2019

The Population of Botswana was estimated at 2.186 million for the year 2019 with males constituting 49.0 percent compared to 51.0 percent for their female counterparts. The proportion of children from 0-14 years was 31.7 percent, the adult population aged 15-64 years was 63.7 percent and elderly population aged 65+ was 4.6 percent as indicated in Botswana Population Projections 2011-2016 Report as shown in table 1 below.

Table 1: Population by Age and Sex, 2019

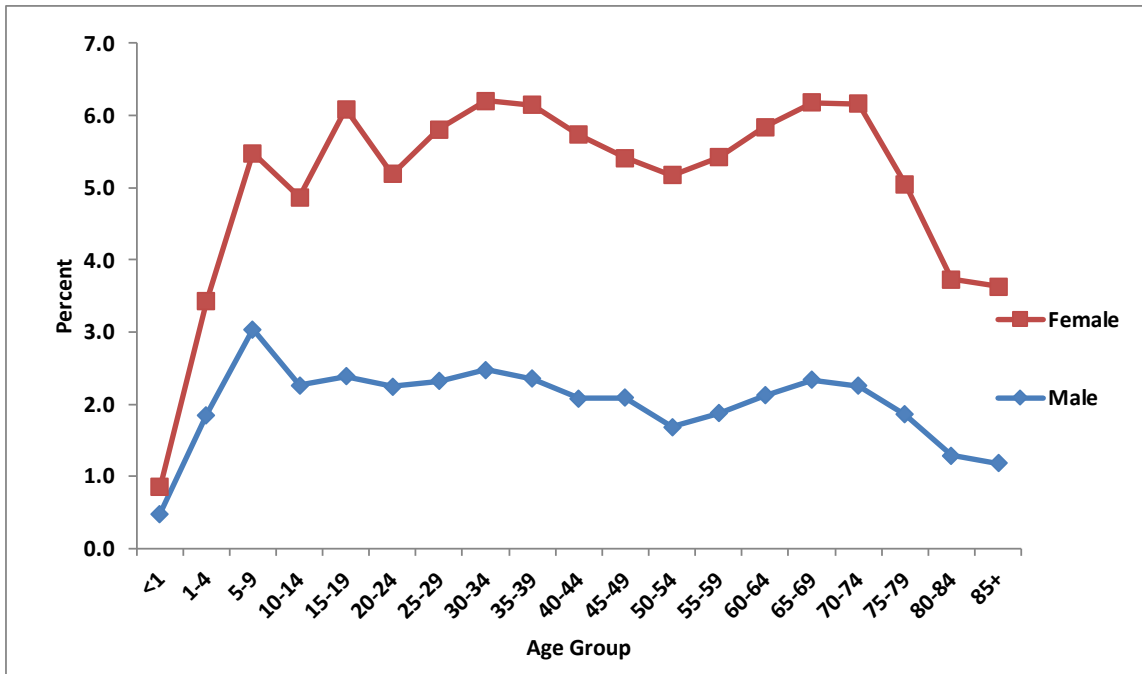
Age Group	Males	Females	Total	Percent
0-4	126,649	125,164	251,813	11.5
5-9	115,043	113,115	228,158	10.4
10-14	107,352	105,576	212,928	9.7
15-19	104,476	103,271	207,747	9.5
20-24	103,405	105,323	208,728	9.5
25-29	97,768	103,666	201,434	9.2
30-34	99,175	103,640	202,815	9.3
35-39	80,717	81,230	161,947	7.4
40-44	63,826	62,579	126,405	5.8
45-49	45,142	48,148	93,290	4.3
50-54	35,231	42,445	77,676	3.6
55-59	27,715	34,681	62,396	2.9
60-64	22,045	27,160	49,205	2.3
65-69	14,955	18,053	33,008	1.5
70-74	10,344	13,872	24,216	1.1
75-79	7,633	11,088	18,721	0.9
80+	9,860	15,555	25,415	1.2
Total	1,071,336	1,114,566	2,185,902	100

Source: Botswana Population Projections 2011-2026

2.2. Age Sex Structure of Eye Out-Patients Attendances

Figure 1, shows the age sex structure of all eye Out-Patient attendances in 2019. The figure indicates that more females (60.6%) than males (39.4%) were seen at eye Out-Patient facilities. The figure further shows that females attendance was higher than males in all age groups. The general pattern shows that there was low attendances in younger ages (under 10 years) and older ages (75+ years). There is no much variations in ages 10 -74 with proportion ranging from 4.6 percent to 6.0 percents of all attendances. The lowest number of attendances were among under ones for both males and females.

Figure 1: Age Sex Structure of Eye Out-Patient Attendance, 2019



2.3. Eye Out-Patient by Health District

Table 2, shows distribution of all eye Out-Patient attendances for different health districts by facility type in 2019. Gaborone(14.9%) and Kweneng East(12.2%) health districts reported the highest proportion of eye Out-Patient attendances compared to other health districts. The districts attended more than one quarter (27.1%) of all eye Out-Patients attendances in Botswana. More than three fifths (61.8%) of eye Out-Patient attendances were attended to in General/Referral Hospitals while three tenths (30.5%) were seen in Primary Hospitals. Clinics and health posts accounted for 7.6 percent of all eye Out-Patient attendances and this were mostly outreach programmes done by Hospitals.

Table 2: Percentage Distribution of Eye Out-Patient Attendance by Health Districts, 2019

Health District	General/Referral Hospital	Primary Hospital	Clinics	Health Post	Grand Total	Percent
Bobirwa	0	2,351	0	0	2,351	2.6
Boteti	0	1,550	0	0	1,550	1.7
Chobe	0	3,186	0	0	3,186	3.6
Francistown	4,562	0	0	0	4,562	5.1
Gaborone	8,759	782	3,724	0	13,265	14.9
Gantsi	0	1,724	0	0	1,724	1.9
GoodHope	0	0	1,338	0	1,338	1.5
Kgalagadi	296	1,296	0	0	1,592	1.8
Kgatleng	5,473	0	0	0	5,473	6.2
kweneng East	5,973	4,868	0	0	10,841	12.2
Kweneng West	0	361	0	0	361	0.4
Lobatse	6,115	0	0	0	6,115	6.9
Mahalapye	4,026	991	0	0	5,017	5.7
Ngamiland	3,242	0	0	0	3,242	3.7
North East	0	2,841	530	419	3,790	4.3
Okavango	0	2,760	137	0	2,897	3.3
Palapye	0	176	25	25	226	0.3
Selebi Phikwe	1,855	0	0	0	1,855	2.1
Serowe	4,403	0	0	0	4,403	5.0
South East	4,421	0	620	0	5,041	5.7
Southern	5,720	0	0	0	5,720	6.4
Tutume	0	4,177	10	0	4,187	4.7
Grand Total	54,845	27,063	6,384	444	88,736	100.0

2.4. Eye Out-Patient Attendances by Main Blocks

Table 3 shows eye Out-Patient attendance diagnosis in 2019 by main eye categories. It shows that close to eight in ten (78.0%) of the diagnosis were diseases of the eye while 22.0 percent were other diseases classified elsewhere. Majority of the eye disease attendances were diseases of the conjunctiva (31.5%), followed by Diseases of the Glaucoma(12.4%), Diseases of the lens (9.8%) and Diseases of ocular muscles, binocular movement, accommodation, and refraction (9.7%). Injury, Poisoning and certain consequences of external causes accounted for 4.6 percent of all attendances. A further distribution of diseases/conditions among different categories are shown in **annex 1**.

Table 3: Eye Out-Patient Attendance by Blocks

ICD 10 Code	Diseases/Diagnosis	New case	Repeat Case	N/S	Grand Total	Percent
H00-H06	Disorders of eyelid ,lacrima system and orbit	2,539	1,445	78	4,062	4.6
H10-H13	Diorders of conjunctiva	18,522	8,971	449	27,942	31.5
H15-H22	Diseases of sclera, cornea, iris and ciliary body	1,841	2,246	101	4,188	4.7
H25-H28	Diseases of lens	3,771	4,766	152	8,689	9.8
H30-H36	Disorders of choroid and retina	264	318	19	601	0.7
H40-H42	Disease of glaucoma	2,138	8,594	305	11,037	12.4
H43-H45	Diseases of vitreous body and globe	178	602	11	791	0.9
H46-H48	Diseases of optic nerve and visual pathways	196	208	12	416	0.5
H49-H52	Diseases of ocular muscles, binocular movement, accomodation and refraction	6,338	2,119	148	8,605	9.7
H53-H54	Visual disturbances and blindness	1,106	433	32	1,571	1.8
H55-H59	Other disorders of eye and adnexa	776	493	21	1,290	1.5
Total above		37,669	30,195	1,328	69,192	78.0
Other diseases/Conditions		10,937	8,155	452	19,544	22.0
Grand Total		48,606	38,350	1,780	88,736	100.0

2.5. Major Eye Disease

Table 4, shows top ten major eye Out-Patient diseases attendance in 2019.The top ten major eye diseases/ conditions attended constituted 62.7 percent while other conditions constituted 37.3 percent of all attendances. The major Out-Patient attendance was Acute atopic conjunctivitis (15.6%) followed by Conjunctivitis unspecified (9.5%) and on the third was Examination of eyes and vision (6.6%). Other major eye Out-Patient attendances are shown in figure 4 below.

Table 4: Top Ten Eye Out-Patient Diseases/Conditions - 2019

Rank	ICD10Code	Diagnosis	Number	Percent
1	H10.1	Acute atopic conjunctivitis	13,828	15.6
2	H40.9	Conjunctivitis, unspecified	8,438	9.5
3	Z01.0	Examination of eyes and vision	5,860	6.6
4	H11.0	Pterygium	5,003	5.6
5	Z96.1	Presence of intraocular lens	4,861	5.5
6	H52.7	Disorder of refraction, unspecified	4,801	5.4
7	H26.9	Cataract, unspecified	4,330	4.9
8	H11.1	Conjunctival degenerations and deposits	3,170	3.6
9	H10.9	Conjunctivitis, unspecified	2,942	3.3
10	H26.8	Other specified cataract	2,395	2.7
	Total above		55,628	62.7
	Other diseases/Conditions		33,108	37.3
	Grand Total		88,736	100.0

2.6. Major Eye Diseases New and Repeat

Table 5, shows the major new and repeat eye Out-Patient diseases/conditions in 2019. The table shows that seven of the top 10 new attendances were also among the repeat attendances even though their ranks differed. Acute atopic conjunctivitis was the highest for new attendances contributing 18.5 percent. The second leading eye Out-Patient disease among new attendance was Examination of eyes and vision(9.9%). Among repeat attendances Conjunctivitis, unspecified (17.4%) was the highest followed by Acute atopic conjunctivitis(12.0%). Conditions that were major for new attendance and but not in repeat were Conjunctivitis, unspecified, Presbyopia and Injury of conjunctiva and corneal abrasion without mention of foreign body. Similarly, conditions that were major in repeat attendance but not in new were Presence of intraocular lens, Glaucoma, Other specified cataract and Primary open-angle glaucoma. Top 10 diagnosis for new attendances contributed 64.1 percent whilst repeat contributed 65.4 percent.

Table 5: Major Eye Diseases Out-Patient Attendance by New and Repeat, 2019

ICD10 Code	Diagnosis	New Attendance			Repeat Attendance		
		Rank	Number	Percent	Repeat	Percent	
H10.1	Acute atopic conjunctivitis	1	9,012	18.5	2	4,600	12
Z01.0	Examination of eyes and vision	2	4,829	9.9	9	936	2.4
H52.7	Disorder of refraction, unspecified	3	3,458	7.1	7	1,253	3.3
H11.0	Pterygium	4	2,735	5.6	5	2,175	5.7
H10.9	Conjunctivitis, unspecified	5	2,338	4.8	-	-	-
H11.1	Conjunctival degenerations and deposits	6	2,294	4.7	10	833	2.2
H26.9	Cataract, unspecified	7	1,962	4	4	2,285	6
H52.4	Presbyopia	8	1,586	3.3	-	-	-
H40.9	Conjunctivitis, unspecified	9	1,489	3.1	1	6,692	17.4
S05.0	Injury of conjunctiva and corneal abrasion without mention of foreign body	10	1,467	3	-	-	-
Z96.1	Presence of intraocular lens	-	-	-	3	3,848	10
H26.8	Other specified cataract	-	-	-	6	1,274	3.3
H40.1	Primary open-angle glaucoma	-	-	-	8	1,180	3.1
Total diagnosis above			31,170	64.1		25,076	65.4
Other diagnosis			17,436	35.9		13,274	34.6
Total attendance			48,606	100		38,350	100

2.7. Major Eye Diseases by Sex

The distribution of the ten leading eye Out-Patient diseases/condition by male and female is shown in **Table 6**. The ten major male eye Out-Patient contributed 59.5 percent of all male attendances. Similarly, the ten major Out-Patient for females contributed 65.6 percent of all female Out-Patient. Eight of the ten major attendances were the same for both males and females. Acute atopic conjunctivitis was the highest for both males and females at 16.0 percent for males and 15.3 percent for females. Conjunctivitis, Unspecified was also the second for both sexes contributing 10.7 percent for males and 8.7 percent among females. Injury of conjunctiva and corneal abrasion without mention of foreign body and Conjunctivitis, unspecified and Other specified cataract was major among males only while Presbyopia, Conjunctival degenerations and deposits was major among females only.

Table 6: Major Eye Out-Patient Attendance among Males and Females, 2019

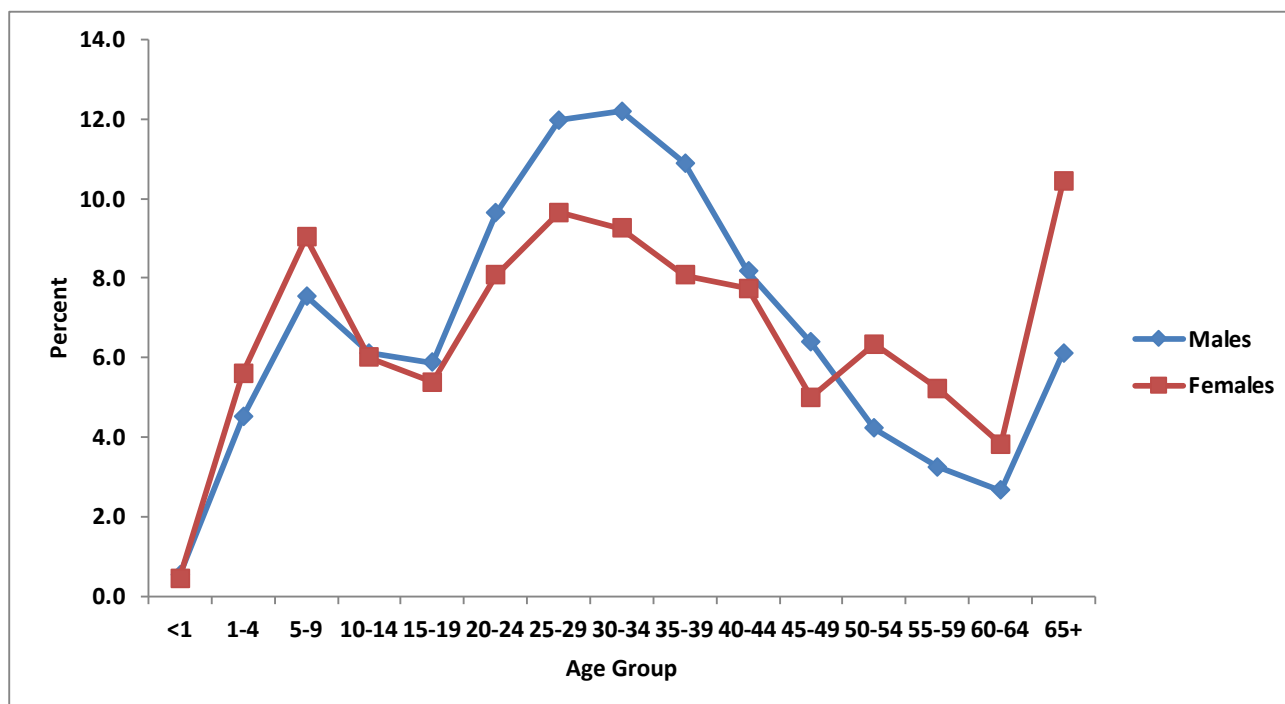
ICD 10 Code	Diagnosis	Male			Female		
		Rank	Number	Percent	Rank	Number	Percent
H10.1	Acute atopic conjunctivitis	1	5,623	16.0	1	8,192	15.3
H40.9	Conjunctivitis, unspecified	2	3,744	10.7	2	4,675	8.7
Z01.0	Examination of eyes and vision	3	2,306	6.6	4	3,553	6.6
Z96.1	Presence of intraocular lens	4	1,808	5.1	7	3,044	5.7
H52.7	Disorder of refraction, unspecified	5	1,409	4.0	5	3,388	6.3
H11.0	Pterygium	6	1,355	3.9	3	3,643	6.8
S05.0	Injury of conjunctiva and corneal abrasion without mention of foreign body	7	1,298	3.7	-	-	-
H26.9	Cataract, unspecified	8	1,245	3.5	6	3,082	5.8
H10.9	Conjunctivitis, unspecified	9	1,205	3.4	9	1,736	3.2
H26.8	Other specified cataract	10	918	2.6	-	-	-
H11.1	Conjunctival degenerations and deposits	-	-	-	8	2,262	4.2
H52.4	Presbyopia	-	-	-	10	1,519	2.8
Total Above			20,911	59.5		35,094	65.6
Othr diseases/Conditions			14,212	40.5		18,399	34.4
Grand Total			35,123	100.0		53,493	100.0

3.0 Eye Injuries

3.1. Age Sex Structure of Eye Injuries

Injury, Poisoning and certain consequences of external causes accounted for 5.2 percent of all eye attendances in 2019. **Figure 2**, shows the age sex distribution of eye Injuries in 2019. Contrary to the general age sex structure of eye Out-Patient consultations the majority of the eye injuries were males (61.6%) while their female counterparts contributed (38.4%). The figure further shows that female's attendance was higher than males among under 10 age groups and 50+ agegroup while males attendance was higher from 15-49 years . The general pattern shows that attendances increase steadily from infants until children aged 5-9 years, then it reduces until 15-19 years age group thereby increasing until they reach a peak at ages 30-34 years for both sexes thereby decreasing at older ages. The highest among females was at 9.6 percent in the age group 25-29 Years. Similarly, the highest among males was 12.2 percent in the 25-29 years age group.

Figure 2: Age Sex structure of Eye Injuries



3.2. Major Eye Injuries

Table 7, shows top ten major eye Out-Patient injuries attendance in 2019. The top ten major eye injuries attended constituted 94.2 percent of all eye injuries. The major eye Out-Patient attendance injury was Injury of conjunctiva and corneal abrasion without mention of foreign body (45.7%) followed by foreign body in cornea(14.2%) and on the third was Injury of eye and orbit,unspecified (10.2%). Other major eye Out-Patient attendances are shown in Table 5.

Table 7: Major eye outpatient Injuries, 2019

Rank	ICD 10 Code	Diagnosis	Number	Percent
1	S05.0	Injury of conjunctiva and corneal abrasion without mention of foreign body	2,127	45.7
2	T15.0	Foreign body in cornea	659	14.2
3	S05.9	Injury of eye and orbit, unspecified	477	10.2
4	T78.4	Allergy, unspecified	329	7.1
5	T26.9	Corrosion of eye and adnexa, part unspecified	220	4.7
6	T15.9	Foreign body on external eye, part unspecified	178	3.8
7	S05.8	Other injuries of eye and orbit	162	3.5
8	T15.1	Foreign body in conjunctival sac	120	2.6
9	S01.1	Open wound of eyelid and periocular area	63	1.4
10	T14.9	Injury, unspecified	51	1.1
		Total Above	4,386	94.2
		Other injuries of eye and orbit	271	5.8
		Grand Total	4,657	100.0

Annex1 :Eye Out-Patient Attendances by Sex and Age Group

ICD10 Code	Diagnosis	Males											Females											N/S	Grand Total
		>1	1-4	5-14	15-24	25-34	35-44	45-54	55-64	65+	N/S	Total	>1	1-4	5-14	15-24	25-34	35-44	45-54	55-64	65+	N/S	Total		
A00-B99	Certain Infectious and Parasitic Diseases																								
A09	Diarhoea and gastroenteritis of presumed infectious origin	0	0	0	0	0	0	0	0	0	0	0	0	0	1	0	0	0	0	0	0	0	0	0	2
A54.3	Gonococcal infection of eye	0	0	0	0	0	0	0	0	0	0	0	0	0	1	0	0	0	0	0	0	0	0	1	0
A71.0	Initial stage of trachoma	0	0	0	0	0	0	0	0	0	0	0	0	0	0	0	0	0	0	0	0	0	0	3	0
A71.1	Active stage of trachoma	0	0	0	0	0	0	0	0	0	0	0	0	0	0	0	0	0	0	0	0	0	0	1	0
A71.9	Trachoma, unspecified	0	0	0	0	0	0	0	0	0	0	0	0	0	0	0	0	0	0	0	0	0	0	0	0
B00.5	Herpesviral ocular disease	1	0	5	6	15	4	3	1	1	0	0	0	0	12	24	16	7	2	0	2	0	63	0	99
B00.9	Herpesviral infection, unspecified	0	0	0	0	0	0	0	0	0	0	0	0	0	0	1	1	0	0	0	0	0	2	0	2
B02.2	Zoster with other nervous system involvement	0	0	0	0	0	1	0	0	0	0	0	0	0	0	0	0	1	1	0	3	0	5	0	7
B02.3	Zoster ocular disease	0	7	21	2	6	4	5	5	6	0	56	0	9	14	10	9	14	11	4	14	0	85	2	143
B02.9	Zoster without complication	0	0	0	0	0	0	0	1	0	0	1	0	0	0	0	1	0	0	0	1	0	2	0	3
B07	Viral warts	0	0	1	6	6	0	0	0	1	0	14	0	0	2	2	0	2	2	2	0	0	10	0	24
B08.1	Molluscum contagiosum	0	0	1	0	2	0	0	0	0	0	3	0	2	0	0	2	0	0	1	1	0	6	0	9
B22.0	HIV disease resulting in encephalopathy	0	0	0	0	0	2	2	0	0	4	0	0	0	0	0	0	1	4	0	0	0	5	0	9
B25.8	Other cytomegaloviral diseases	0	0	0	0	2	0	0	1	1	0	4	0	0	0	1	1	1	0	0	0	0	3	0	7
B25.9	Cytomegaloviral disease, unspecified	0	0	0	0	1	0	3	1	0	5	0	0	0	0	0	1	3	1	0	3	0	8	0	13
B26.9	Mumps without complication	0	0	0	0	0	0	0	0	0	0	0	0	0	0	0	0	0	0	0	1	0	1	0	1
B30.1	Conjunctivitis due to adenovirus (H13.1*)	0	0	0	1	1	1	0	1	0	4	0	0	0	0	0	6	2	0	0	0	0	9	0	13
B30.8	Other viral conjunctivitis (H13.1*)	1	3	30	3	2	4	1	1	1	0	46	0	6	21	11	1	1	2	0	1	0	43	0	89
B30.9	Viral conjunctivitis, unspecified	0	5	11	15	4	6	4	3	1	1	50	0	4	11	6	24	6	4	5	4	0	64	1	115
B34.9	Viral infection, unspecified	0	0	0	0	0	2	0	0	0	2	0	0	0	0	0	0	0	0	0	0	0	0	0	2
B49	Unspecified mycosis	0	1	1	1	0	0	0	0	0	3	0	0	0	0	0	0	0	0	0	0	0	0	0	3
B58.0	Toxoplasma oculopathy	0	1	0	0	0	0	0	0	0	1	0	0	0	0	0	0	0	0	0	0	0	1	0	2
B58.8*	Toxoplasmosis with other organ involvement	0	0	0	0	0	5	2	3	4	0	14	0	0	1	0	5	14	5	8	5	0	38	0	52
B58.9	Toxoplasmosis, unspecified	0	0	0	0	0	0	0	0	0	0	0	0	0	0	0	0	2	0	0	0	0	2	0	2
B69.1	Cysticercosis of eye	0	0	5	0	0	0	0	0	0	5	0	0	0	0	2	0	0	0	1	0	0	3	0	8
B86	Scabies	0	0	1	0	0	0	0	0	0	1	0	0	0	0	0	0	0	0	0	0	0	0	0	1
Sub Total		2	17	76	34	39	31	20	19	17	1	256	1	21	62	59	68	54	34	21	37	0	357	3	616

Annex1 : Eye Out-Patient Attendances by Sex and Age Group Cont..

ICD10 Code	Diagnosis	Males											Females											Total	N/S	Grand Total								
		<1	1-4	5-14	15-24	25-34	35-44	45-54	55-64	65+	N/S	Total	<1	1-4	5-14	15-24	25-34	35-44	45-54	55-64	65+	N/S	Total											
C00-D48	Neoplasms																																	
C44.0	Malignant neoplasm of skin of lip	0	0	0	0	0	0	0	0	0	0	0	0	0	0	0	0	0	0	0	0	0	0	0	0	0	0	0	0	0	1			
C44.1	Malignant neoplasm of skin of eyelid, including canthus	1	0	2	0	0	2	3	3	0	0	0	0	0	0	0	0	2	1	0	0	1	0	0	0	0	0	1	0	0	21			
C44.9	Malignant neoplasm of skin, unspecified	0	0	0	0	0	2	0	0	0	2	0	0	0	0	0	0	0	0	0	0	0	0	0	0	0	0	1	0	0	3			
C46.7	Kaposi's sarcoma of other sites	0	0	0	0	0	0	0	0	0	0	0	0	0	0	0	0	0	0	0	0	0	0	0	0	0	0	0	0	0	1			
C46.9	Kaposi's sarcoma, unspecified	0	0	0	0	0	0	0	0	0	0	0	0	0	0	0	0	0	0	0	0	0	0	0	0	0	0	0	0	0	1			
C49.0	Malignant neoplasm of connective and soft tissue of head, face and neck	0	0	0	0	0	0	0	0	0	0	0	0	0	0	0	0	0	0	0	0	0	0	0	0	0	0	0	0	0	1			
C69.0	Malignant neoplasm of conjunctiva	0	0	0	0	0	0	0	0	0	0	0	1	0	0	0	0	0	0	0	0	0	0	0	0	0	0	0	0	0	0	3		
C69.1	Malignant neoplasm of cornea	0	0	0	0	0	0	0	0	0	0	0	0	0	0	0	0	0	0	0	0	0	0	0	0	0	0	0	0	0	0	4		
C69.2	Malignant neoplasm of retina	1	3	0	0	0	0	0	0	0	0	0	0	0	0	0	0	0	0	0	0	0	0	0	0	0	0	0	0	0	0	7		
C69.6	Malignant neoplasm of orbit	0	0	0	0	0	0	0	0	0	0	0	0	0	0	0	0	0	0	0	0	0	0	0	0	0	0	0	0	0	0	2		
C69.9	Malignant neoplasm of eye, unspecified	0	0	0	0	0	0	0	0	0	0	0	0	0	0	0	0	0	0	0	0	0	0	0	0	0	0	0	0	0	0	7		
C95.9	Leukaemia, unspecified	0	0	0	0	0	0	0	0	0	0	0	0	0	0	0	0	0	0	0	0	0	0	0	0	0	0	0	0	0	0	1		
D03.1	Melanoma in situ of eyelid, including canthus	0	0	0	0	0	0	0	0	0	0	0	0	0	0	0	0	0	0	0	0	0	0	0	0	0	0	0	0	0	0	1		
D14.0	Benign neoplasm of middle ear, nasal cavity and accessory sinuses	0	0	0	0	0	0	0	0	0	0	0	0	0	0	0	0	0	0	0	0	0	0	0	0	0	0	0	0	0	0	0	1	
D22.9	Melanocytic naevi, unspecified	0	0	0	0	0	0	0	0	0	0	0	0	0	0	0	0	0	0	0	0	0	0	0	0	0	0	0	0	0	0	0	5	
D23.1	Other benign neoplasms of skin of eyelid, including canthus	1	1	0	0	0	0	0	0	0	0	0	0	0	0	0	0	0	0	0	0	0	0	0	0	0	0	0	0	0	0	0	16	
D31.0	Benign neoplasm of conjunctiva	0	0	0	0	0	0	0	0	0	0	0	0	0	0	0	0	0	0	0	0	0	0	0	0	0	0	0	0	0	0	0	1	
D31.6	Benign neoplasm of orbit, unspecified	0	0	0	0	0	0	0	0	0	0	0	0	0	0	0	0	0	0	0	0	0	0	0	0	0	0	0	0	0	0	0	1	
D35.2	Benign neoplasm of pituitary gland	0	0	0	0	0	0	0	0	0	0	0	0	0	0	0	0	0	0	0	0	0	0	0	0	0	0	0	0	0	0	0	1	
D36.9	Benign neoplasm of unspecified site	0	0	0	0	0	0	0	0	0	0	0	0	0	0	0	0	0	0	0	0	0	0	0	0	0	0	0	0	0	0	0	1	
D44.1	Neoplasm of uncertain or unknown behaviour of adrenal gland	0	0	0	0	0	0	0	0	0	0	0	0	0	0	0	0	0	0	0	0	0	0	0	0	0	0	0	0	0	0	0	1	
D48.1	Neoplasm of uncertain or unknown behaviour of connective and other soft tissue	0	0	0	0	0	0	0	0	0	0	0	0	0	0	0	0	0	0	0	0	0	0	0	0	0	0	0	0	0	0	0	0	1
D48.5	Neoplasm of uncertain or unknown behaviour of skin	0	2	3	1	6	2	1	2	4	0	0	0	0	0	0	0	0	0	0	0	0	0	0	0	0	0	0	0	0	0	0	0	77
D48.7	Neoplasm of uncertain or unknown behaviour of other specified sites	1	3	13	18	55	41	33	18	21	5	208	0	9	22	42	67	76	44	20	15	2	297	2	507									
D48.9	Neoplasm of uncertain or unknown behaviour, unspecified	0	0	0	0	2	3	1	1	0	0	8	0	1	0	0	0	4	3	1	0	0	18	0	26									
	Sub Total	4	9	20	23	65	52	43	25	30	6	277	0	18	32	55	91	96	59	32	27	2	412	2	691									

Annex1 :Eye Out-Patient Attendances by Sex and Age Group Conti..

ICD10 Code	Diagnosis	Males													Females						Grand Total																										
		<1	1-4	5-14	15-24	25-34	35-44	45-54	55-64	65+	N/S	Total	<1	1-4	5-14	15-24	25-34	35-44	45-54	55-64		65+	N/S	Total																							
D50-D89	Diseases of the blood and blood-forming organs and certain disorders involving the immune mechanism																																														
D64.9	Anaemia, unspecified	0	0	0	0	0	0	0	0	0	0	0	0	0	0	0	0	0	0	0	0	0	0	0	0	0	0	0	0	0	0	0	0	0	0	0	0	0	0	2							
	Sub Total	0	0	0	0	0	0	0	0	0	0	0	0	0	0	0	0	0	0	0	0	0	0	0	0	0	0	0	0	0	0	0	0	0	0	0	0	0	0	2							
E00-E90	Endocrine, Nutritional and Metabolic Diseases																																														
E05.9	Thyrotoxicosis, unspecified	0	0	0	0	0	0	0	0	0	0	0	0	0	0	0	0	0	0	0	0	0	0	0	0	0	0	0	0	0	0	0	0	0	0	0	0	0	0	0	0	1					
E07.9	Disorder of thyroid, unspecified	0	0	0	0	0	0	0	0	0	0	0	0	0	0	0	0	0	0	0	0	0	0	0	0	0	0	0	0	0	0	0	0	0	0	0	0	0	0	0	0	0	10				
E10.3	Insulin-dependent diabetes mellitus, with ophthalmic complications	0	0	0	0	0	0	0	1	0	0	0	0	0	0	0	0	0	0	0	0	0	0	0	0	0	0	0	0	0	0	0	0	0	0	0	0	0	0	0	0	0	0	3			
E11.8	Non-insulin-dependent diabetes mellitus, with unspecified complications	0	0	0	0	0	0	0	0	1	0	0	0	0	0	0	0	0	0	0	0	0	0	0	0	0	0	0	0	0	0	0	0	0	0	0	0	0	0	0	0	0	0	4			
E14.3	Unspecified diabetes mellitus, with ophthalmic complications	0	1	0	2	3	1	10	9	9	1	36	0	0	1	0	0	0	0	0	0	0	0	0	6	14	28	20	0	69	0	0	0	0	0	0	0	0	0	0	0	0	105				
E14.8	Unspecified diabetes mellitus, with unspecified complications	0	0	0	0	0	0	0	0	0	1	0	0	0	0	0	0	0	0	0	0	0	0	0	0	0	0	0	0	0	0	0	0	0	0	0	0	0	0	0	0	0	0	1			
E14.9	Unspecified diabetes mellitus, without complications	0	0	1	0	2	8	11	12	12	0	46	0	0	3	0	4	16	27	40	38	1	129	0	175																						
E22.1	Hyperlactinaemia	0	0	0	0	0	0	0	0	0	0	0	0	0	0	0	0	0	0	0	0	0	2	0	0	0	0	0	0	0	0	0	0	0	0	0	0	0	0	0	0	2					
E50.7	Other ocular manifestations of vitamin A deficiency	0	0	0	0	0	0	0	0	1	0	0	0	0	0	0	0	0	0	0	0	0	0	0	0	0	0	0	0	0	0	0	0	0	0	0	0	0	0	0	0	0	0	0	1		
E50.9	Vitamin A deficiency, unspecified	0	0	0	0	0	0	1	0	0	0	1	0	0	0	0	0	0	0	0	0	0	0	0	0	0	0	0	0	0	0	0	0	0	0	0	0	0	0	0	0	0	0	0	2		
E78.0	Pure hypercholesterolaemia	0	0	0	0	0	0	0	0	1	0	0	0	0	0	0	0	0	0	0	0	0	0	0	0	0	0	0	0	0	0	0	0	0	0	0	0	0	0	0	0	0	0	0	0	0	1
E80.1	Porphyria cutanea tarda	0	0	0	0	0	1	0	0	0	0	0	0	0	0	0	0	0	0	0	0	0	0	0	0	0	0	0	0	0	0	0	0	0	0	0	0	0	0	0	0	0	0	0	0	0	3
	Sub Total	0	1	1	2	6	9	24	23	22	1	89	0	0	4	4	6	28	42	73	61	1	219	0	308																						

Annex1 :Eye Out-Patient Attendances by Sex and Age Group Cont..

ICD10 Code	Diagnosis	Males										Females										N/S	Grand Total			
		<1	1-4	5-14	15-24	25-34	35-44	45-54	55-64	65+	N/S	Total	<1	1-4	5-14	15-24	25-34	35-44	45-54	55-64	65+			N/S	Total	
Mental and Behavioral disorders due to psychoactive substance use																										
F06.1	Organic catatonic disorder	0	0	0	0	0	0	0	0	0	0	0	0	0	0	0	1	0	0	0	0	0	0	1	0	1
F06.3	Organic mood [affective] disorders	0	0	0	0	0	0	0	0	0	0	0	0	0	0	0	0	0	2	0	0	0	0	2	0	2
F10.9	Mental and behavioural disorders due to use of alcohol, unspecified mental and behavioural disorder	0	0	0	0	3	0	0	0	0	0	0	0	0	0	0	0	0	0	2	0	0	0	2	0	5
F12.0	Mental and behavioural disorders due to use of cannabinoids, acute intoxication	0	0	0	0	1	0	0	0	0	0	0	0	0	0	0	0	0	0	0	0	0	0	0	0	1
F12.9	Mental and behavioural disorders due to use of cannabinoids, unspecified mental and behavioural disorder	0	0	0	4	2	3	0	0	0	0	0	0	0	0	0	0	0	0	0	0	0	0	0	0	9
F15.1	Mental and behavioural disorders due to use of other stimulants including caffeine, harmful use	0	0	0	0	0	0	0	0	0	0	0	0	0	0	0	1	0	0	0	0	0	0	1	0	1
F20.9	Schizophrenia, unspecified	0	0	1	11	26	41	23	9	7	0	118	0	0	0	4	15	17	14	17	16	0	83	0	201	
F23.9	Acute and transient psychotic disorder, unspecified	0	0	0	3	2	1	0	0	0	0	6	0	0	0	0	0	1	0	0	2	0	3	0	9	
F25.8	Other schizoaffective disorders	0	0	0	0	0	0	0	0	0	0	0	0	0	0	0	0	0	0	0	1	0	1	0	1	
F25.9	Schizoaffective disorder, unspecified	0	0	0	0	2	2	0	0	0	0	4	0	0	0	0	5	1	3	2	0	0	11	0	15	
F31.9	Bipolar affective disorder, unspecified	0	0	0	0	1	0	0	0	0	0	1	0	0	1	1	4	0	0	0	0	0	6	0	7	
F32.0	Mild depressive episode	0	0	0	0	0	0	0	0	0	0	0	0	0	0	0	0	0	0	1	0	0	1	0	1	
F32.3	Severe depressive episode with psychotic symptoms	0	0	0	0	0	0	0	0	0	0	0	0	0	0	2	0	0	0	0	0	0	2	0	2	
F32.9	Depressive episode, unspecified	0	0	0	0	2	0	0	1	0	0	3	0	0	0	2	4	1	1	1	0	0	8	0	11	
F43.0	Acute stress reaction	0	0	0	0	0	1	0	0	0	0	1	0	0	1	2	1	5	1	0	0	10	0	11		
F43.2	Adjustment disorders	0	0	0	0	0	0	0	0	0	0	0	0	0	2	0	0	0	1	0	0	3	0	3		
F51.9	Nonorganic sleep disorder, unspecified	0	0	0	0	0	0	0	0	0	0	0	0	0	0	0	0	0	1	0	0	1	0	1	1	
F53.1	Severe mental and behavioural disorders associated with the puerperium, not elsewhere classified	0	0	0	0	0	0	0	0	0	0	0	0	0	0	0	1	1	0	0	0	0	2	0	2	
F63.2	Pathological stealing [kleptomania]	0	0	0	0	0	1	0	0	0	0	1	0	0	0	0	0	0	0	0	0	0	0	0	1	
F79.9	Unspecified mental retardation without mention of impairment of behaviour	0	0	0	0	1	1	0	0	0	0	2	0	0	2	2	0	0	0	0	0	0	4	0	6	
F84.0	Childhood autism	0	0	0	0	0	0	0	0	0	0	0	0	0	1	0	0	0	0	0	0	0	1	0	1	
F90.0	Disturbance of activity and attention	0	0	1	1	0	0	0	0	0	0	2	0	0	1	0	0	0	0	0	0	0	1	0	3	
F98.0	Nonorganic enuresis	0	0	0	1	0	0	0	0	0	0	1	0	0	0	0	0	0	0	0	0	0	0	0	1	
F99	Mental disorder, not otherwise specified	0	0	0	0	0	0	0	0	0	0	0	0	1	0	1	0	1	0	0	0	0	2	0	2	
F03	Unspecified dementia	0	0	0	0	0	0	0	1	5	0	6	0	0	0	0	0	0	0	0	8	0	8	0	14	
F19.9	Mental and behavioural disorders due to multiple drug use and use of other psychotropic substances,unspecified	0	0	0	1	0	0	1	0	0	0	2	0	0	0	0	0	0	0	0	0	0	0	0	2	
F41.9	Other anxiety disorders,unspecified	0	0	0	0	0	0	0	0	0	0	0	0	0	0	0	0	1	0	0	0	0	1	0	1	
Sub Total		0	0	2	21	40	50	24	11	12	160	0	0	2	12	31	33	26	23	27	0	154	0	314		

G00-G99 Diseases of nervous system		0	4	2	5	9	7	5	1	6	0	39	0	0	7	18	15	14	6	6	4	1	71	1	111
G02.1	Meningitis in mycoses	0	0	0	0	0	0	0	0	0	0	0	0	0	0	0	0	1	0	0	0	0	1	0	1
G04.9	Encephalitis, myelitis and encephalomyelitis, unspecified	0	0	0	0	0	0	0	0	0	0	0	0	0	0	0	0	1	0	0	0	0	1	0	1
G12.0	Infantile spinal muscular atrophy, type I [Werdnig-Hoffman]	0	0	1	0	0	0	0	0	0	0	1	0	0	0	0	0	0	0	0	0	0	0	0	1
G25.8	Other specified extrapyramidal and movement disorders	0	0	0	0	1	0	0	0	0	0	1	0	0	0	0	0	0	0	0	0	0	0	0	1
G31.9	Degenerative disease of nervous system, unspecified	0	2	0	0	0	0	0	0	0	0	2	0	0	1	0	0	0	0	0	0	0	1	0	3
G40.9	Epilepsy, unspecified	0	0	0	2	6	2	3	0	2	0	15	0	0	0	6	6	2	2	0	2	0	18	0	33
G43.3	Complicated migraine	0	0	0	0	0	0	0	0	0	0	0	0	0	0	1	0	0	0	0	0	0	1	0	1
G43.8	Other migraine	0	0	0	0	0	0	0	0	0	0	0	0	0	0	1	0	0	0	0	0	0	1	0	1
G43.9	Migraine, unspecified	0	0	0	0	1	0	0	0	1	0	2	0	0	0	6	3	4	0	1	0	1	15	0	17
G44.1	Vascular headache, not elsewhere classified	0	0	0	0	0	0	0	0	0	0	0	0	0	0	0	0	0	0	1	0	0	1	0	1
G44.2	Tension-type headache	0	0	0	0	0	1	1	0	0	0	2	0	0	3	0	2	0	0	0	0	0	5	0	7
G45.3	Amaurosis fugax	0	0	0	0	0	0	0	0	0	0	0	0	0	0	0	0	0	0	1	0	0	1	0	1
G51.0	Bell's palsy	0	0	0	2	0	2	0	0	2	0	6	0	0	1	0	1	6	3	3	0	0	14	0	20
G51.9	Disorder of facial nerve, unspecified	0	0	0	0	1	0	0	0	0	0	1	0	0	0	1	1	0	0	0	0	0	2	0	3
G52.9	Cranial nerve disorder, unspecified	0	0	0	0	0	2	0	0	0	0	2	0	0	0	0	0	0	0	0	0	0	0	0	2
G61.0	Guillain-Barré syndrome	0	0	0	0	0	0	0	0	0	0	1	0	0	1	0	0	0	0	0	0	0	1	0	1
G62.9	Polyneuropathy, unspecified	0	0	0	1	0	0	0	1	0	0	2	0	0	0	0	0	0	0	0	0	0	0	0	2
G70.0	Myasthenia gravis	0	0	0	0	0	0	0	0	0	0	0	0	0	0	0	2	0	0	0	0	0	2	0	2
G72.9	Myopathy, unspecified	0	0	0	0	0	0	0	0	0	0	0	0	0	0	0	0	0	0	0	0	1	0	1	1
G80.9	Cerebral palsy, unspecified	0	1	0	0	0	0	0	0	0	1	0	0	0	1	0	0	0	1	0	0	0	2	0	3
G83.9	Paralytic syndrome, unspecified	0	0	0	0	0	0	0	0	1	0	1	0	0	0	0	0	0	0	0	0	0	0	0	1
G90.1	Familial dysautonomia [Riley-Day]	0	0	0	0	0	0	1	0	0	0	1	0	0	0	0	0	0	0	0	0	0	0	0	1
G91.9	Hydrocephalus, unspecified	0	0	1	0	0	0	0	0	0	0	1	0	0	0	0	0	0	0	0	0	0	0	0	2
G44.8	Other specified headache syndromes	0	1	0	0	0	0	0	0	0	0	1	0	0	0	3	0	0	0	0	1	0	4	0	5
Sub Total		0	4	2	5	9	7	5	1	6	0	39	0	0	7	18	15	14	6	6	4	1	71	1	111

Annex1 :Eye Out-Patient Attendances by Sex and Age Group Cont..

ICD10 Code	Diagnosis	Males												Females												N/S	Grand Total
		Males												Females													
		<1	1-4	5-14	15-24	25-34	35-44	45-54	55-64	65+	N/S	Total	<1	1-4	5-14	15-24	25-34	35-44	45-54	55-64	65+	N/S	Total				
H00-H06	Disorders of eyelid ,lacriml system and orbit																										
H00.0	Hordeolum and other deep inflammation of eyelid	1	43	180	143	124	63	40	30	17	1	642	7	40	151	191	177	152	72	56	39	3	888	2	1,532		
H00.1	Chalazion	2	27	41	83	66	42	19	11	11	0	302	3	13	75	139	128	80	42	25	22	1	528	0	830		
H01.0	Blepharitis	0	3	12	7	2	7	3	3	6	0	43	0	4	22	7	9	3	9	7	20	0	81	0	124		
H01.1	Noninfectious dermatoses of eyelid	0	0	1	0	0	1	1	0	0	0	3	0	0	3	4	2	0	0	1	2	0	12	0	15		
H01.8	Other specified inflammation of eyelid	0	0	0	0	0	0	1	0	0	0	1	0	0	0	0	1	0	1	0	0	0	2	0	3		
H01.9	Inflammation of eyelid, unspecified	1	2	10	7	6	5	5	5	6	0	47	0	5	5	11	3	14	1	8	8	1	56	0	103		
H02.0	Entropion and trichiasis of eyelid	6	0	3	1	1	7	12	20	44	1	95	0	0	4	2	5	22	22	28	108	5	196	0	291		
H02.1	Ectropion of eyelid	0	0	0	0	1	0	0	1	3	0	5	0	0	0	1	1	0	1	5	12	0	20	0	25		
H02.2	Lagophthalmos	0	0	0	0	0	1	0	1	0	0	2	0	0	0	0	0	1	0	3	1	0	5	0	7		
H02.4	Prosis of eyelid	4	3	8	6	2	2	2	0	3	1	31	0	3	5	13	3	4	6	3	1	0	38	0	69		
H02.5	Other disorders affecting eyelid function	0	0	0	0	0	1	0	1	0	0	2	1	0	0	0	0	0	1	0	0	0	2	0	4		
H02.8	Other specified disorders of eyelid	0	7	11	1	8	8	3	3	7	0	48	0	4	8	9	7	8	19	18	5	1	79	0	127		
H02.9	Disorder of eyelid, unspecified	0	0	1	1	3	1	2	0	0	0	8	2	1	0	1	0	0	1	0	0	0	5	0	13		
H04.0	Dacryoadenitis	0	0	0	0	0	0	0	0	0	0	0	0	1	1	0	0	0	0	0	1	0	3	0	3		
H04.1	Other disorders of lacrimal gland	0	3	6	15	19	34	30	20	28	0	155	0	4	12	23	36	46	73	76	100	1	371	0	526		
H04.2	Epiphora	4	8	6	6	4	4	2	8	7	0	49	4	12	2	4	4	6	13	8	11	0	64	1	114		
H04.3	Acute and unspecified inflammation of lacrimal passages	5	3	5	0	0	0	2	1	1	0	17	2	5	5	5	5	9	3	4	3	0	41	0	58		
H04.4	Chronic inflammation of lacrimal passages	1	0	0	0	0	0	0	0	0	0	1	0	0	1	0	0	0	0	0	0	0	1	0	2		
H04.5	Stenosis and insufficiency of lacrimal passages	8	10	3	1	0	0	1	1	3	0	27	6	14	3	0	0	2	2	1	2	0	30	0	57		
H04.6	Other changes in lacrimal passages	0	0	0	0	0	0	0	0	0	0	0	0	1	0	0	0	0	0	0	0	0	1	0	1		
H04.9	Disorder of lacrimal system, unspecified	0	0	0	0	0	0	0	0	0	0	0	0	0	0	0	0	0	0	0	1	0	1	0	1		
H05.0	Acute inflammation of orbit	0	1	6	11	11	13	1	1	0	0	44	0	3	8	4	8	8	3	0	4	0	38	0	82		
H05.1	Chronic inflammatory disorders of orbit	0	0	1	0	0	0	0	0	0	0	1	0	0	0	0	0	0	0	0	0	0	0	0	1		
H05.2	Exophthalmic conditions	0	2	5	2	9	8	3	2	2	0	33	1	2	1	4	9	2	2	2	1	0	24	0	57		
H05.3	Deformity of orbit	0	0	1	0	0	0	0	0	0	0	1	0	0	0	0	0	0	0	0	0	0	0	0	1		
H05.5	Retained (old) foreign body following penetrating wound of orbit	0	0	0	1	0	1	3	2	0	0	7	0	0	0	0	0	0	2	0	0	0	2	0	9		
H05.8	Other disorders of orbit	0	0	0	1	0	0	0	0	0	0	1	0	0	0	0	0	0	0	0	0	0	0	0	1		
H05.9	Disorder of orbit, unspecified	0	0	2	0	1	0	1	0	1	0	5	0	0	0	1	0	0	0	0	0	0	1	0	6		
Sub Total		32	112	302	286	257	198	131	110	139	3	1,570	26	112	306	419	398	357	273	245	341	12	2,489	3	4,062		

Annex1 :Eye Out-Patient Attendances by Sex and Age Group Cont..

ICD10 Code	Diagnosis	Males										Females										Total	N/S	Grand Total						
		<1	1-4	5-14	15-24	25-34	35-44	45-54	55-64	65+	N/S	Total	<1	1-4	5-14	15-24	25-34	35-44	45-54	55-64	65+				N/S	Total				
H10-H13	Diorders of conjunctiva																													
H10.0	Mucopurulent conjunctivitis	82	200	124	56	67	34	18	15	31	9	636	85	165	138	86	111	118	62	46	67	8	886	2	1,524					
H10.1	Acute atopic conjunctivitis	109	731	2,055	870	587	463	296	219	273	20	5,623	73	538	1,805	1,373	1,110	1,081	751	597	825	39	8,192	13	13,828					
H10.2	Other acute conjunctivitis	0	1	1	0	1	4	2	2	0	0	11	0	0	2	1	2	1	2	0	0	0	8	0	19					
H10.3	Acute conjunctivitis, unspecified	1	2	1	4	4	1	6	1	0	0	20	3	7	2	6	11	4	4	4	5	0	46	0	66					
H10.4	Chronic conjunctivitis	1	2	31	21	9	6	2	5	1	0	78	1	6	23	24	22	14	5	8	9	0	112	0	190					
H10.5	Blepharconjunctivitis	1	3	1	0	1	2	0	0	4	0	12	0	2	1	6	1	3	1	2	2	0	18	0	30					
H10.8	Other conjunctivitis	2	0	6	1	1	1	1	1	0	0	13	0	0	4	1	5	0	3	2	3	0	18	0	31					
H10.9	Conjunctivitis, unspecified	78	140	228	152	173	161	100	71	98	4	1,205	60	140	225	253	276	220	193	145	215	9	1,736	1	2,942					
H11.0	Pterygium	1	2	17	55	204	362	318	220	172	4	1,355	0	8	16	95	423	806	856	778	653	8	3,643	5	5,003					
H11.1	Conjunctival degenerations and deposits	2	2	11	59	234	259	167	94	73	2	903	0	6	17	114	532	561	450	321	253	8	2,262	5	3,170					
H11.2	Conjunctival scars	0	1	2	0	1	1	0	1	1	0	7	0	1	0	1	5	4	4	2	1	0	18	0	25					
H11.3	Conjunctival haemorrhage	10	11	43	90	152	90	35	14	21	2	468	2	12	34	79	123	93	53	33	26	4	459	2	929					
H11.4	Other conjunctival vascular disorders and cysts	0	3	4	7	13	6	7	5	2	1	48	0	0	5	2	4	6	6	4	0	0	27	0	75					
H11.8	Other specified disorders of conjunctiva	0	0	0	0	2	5	0	0	2	0	9	0	0	0	0	1	2	2	1	1	0	7	0	16					
H11.9	Disorder of conjunctiva, unspecified	0	0	1	0	3	0	1	1	1	0	7	0	1	0	1	2	2	2	0	1	0	9	0	16					
H13.0	Filarial infection of conjunctiva (B74.-+)	0	0	0	2	1	0	0	0	0	0	3	1	0	1	2	0	2	0	0	0	0	6	0	9					
H13.1	Conjunctivitis in infectious and parasitic diseases classified elsewhere	0	0	1	1	1	1	0	1	0	0	5	0	0	0	5	1	1	1	0	1	0	8	0	13					

Annex1 :Eye Out-Patient Attendances by Sex and Age Group Cont..

ICD10 Code	Diagnosis	Males										Females										Grand Total			
		<1	1-4	5-14	15-24	25-34	35-44	45-54	55-64	65+	N/S	Total	<1	1-4	5-14	15-24	25-34	35-44	45-54	55-64	65+		N/S	Total	
		288	1,103	2,533	1,320	1,459	1,398	953	651	680	42	10,427	226	890	2,280	2,053	2,634	2,923	2,394	1,945	2,066		76	17,487	28
H15-H22	Diseases of sclera, cornea, iris and ciliary body																								
H15.0	Scleritis	0	0	0	4	5	1	1	0	1	0	0	0	0	0	0	0	0	0	0	0	0	0	0	0
H15.1	Episcleritis	0	0	11	14	17	13	6	4	4	0	0	0	0	12	17	17	23	12	14	6	1	102	0	171
H15.8	Other disorders of sclera	0	0	0	0	1	2	7	7	6	2	25	0	0	0	2	4	3	5	2	10	0	26	0	51
H15.9	Disorder of sclera, unspecified	0	0	0	0	0	0	0	0	0	0	0	0	0	0	0	1	1	0	0	0	0	2	0	2
H16.0	Corneal ulcer	0	16	22	29	54	43	46	39	62	8	319	0	16	31	11	34	29	48	41	67	0	277	2	598
H16.1	Other superficial keratitis without conjunctivitis	0	0	2	3	9	5	2	0	7	0	28	0	0	2	4	1	3	2	10	13	0	35	0	63
H16.2	Keratoconjunctivitis	0	20	46	20	18	10	1	3	4	0	122	1	10	16	21	13	14	15	5	8	1	104	0	226
H16.3	Interstitial and deep keratitis	0	0	3	0	1	1	0	0	0	0	5	0	1	0	2	0	0	2	0	0	0	5	0	10
H16.4	Corneal neovascularisation	0	0	1	0	0	2	0	1	0	0	4	0	0	0	2	0	2	0	1	0	0	5	0	9
H16.8	Other keratitis	0	0	0	6	6	1	0	0	0	0	13	0	0	2	1	0	3	1	2	1	0	10	0	23
H16.9	Keratitis, unspecified	0	2	14	37	32	24	34	19	50	1	213	0	7	26	42	45	37	37	37	77	6	314	0	527
H17.0	Adherent leukoma	0	0	1	0	0	1	0	1	0	0	3	0	1	0	0	0	0	0	0	2	0	3	0	6
H17.8	Other corneal scars and opacities	0	0	0	1	0	0	0	0	2	0	3	0	0	0	0	0	0	0	0	1	0	1	0	4
H17.9	Corneal scar and opacity, unspecified	1	6	29	29	29	26	23	22	49	4	218	2	14	30	14	34	18	16	22	52	0	202	0	420
H18.0	Corneal pigmentations and deposits	0	0	0	2	0	0	1	1	1	0	5	0	0	0	0	0	1	0	0	3	0	4	0	9
H18.1	Bullous keratopathy	0	0	1	0	0	0	0	1	10	0	12	0	1	0	0	1	0	2	3	18	1	26	0	38
H18.2	Other corneal oedema	0	0	1	4	0	0	0	0	1	0	6	0	6	0	0	1	1	3	1	5	0	17	0	23

Annex1 :Eye Out-Patient Attendances by Sex and Age Group Cont..

ICD10 Code	Diagnosis	Males										Females										Grand Total			
		<1	1-4	5-14	15-24	25-34	35-44	45-54	55-64	65+	N/S	Total	<1	1-4	5-14	15-24	25-34	35-44	45-54	55-64	65+		N/S	Total	
																									N/S
H18.3	Changes in corneal membranes	0	0	0	0	0	0	0	0	0	0	0	0	0	0	0	0	0	0	0	1	0	1	0	1
H18.4	Corneal degeneration	0	4	2	1	2	2	1	5	24	0	41	1	1	0	4	1	1	1	1	13	3	26	0	67
H18.5	Hereditary corneal dystrophies	0	0	0	0	3	0	4	1	6	0	14	0	0	0	0	0	1	0	2	2	0	5	0	19
H18.6	Keratoconus	0	0	6	8	0	1	0	3	1	0	19	0	0	5	12	3	1	2	4	3	0	30	0	49
H18.7	Other corneal deformities	0	1	1	0	0	1	3	0	1	0	7	0	0	1	0	0	1	0	0	0	0	2	0	9
H18.8	Other specified disorders of cornea	0	0	0	1	0	1	2	0	0	0	4	0	0	0	0	0	1	0	0	1	0	2	0	6
H18.9	Disorder of cornea, unspecified	0	2	14	20	23	14	19	54	270	7	423	0	0	12	14	20	20	13	38	237	7	361	0	784
H19.2*	Keratitis and episcleritis in diseases classified elsewhere	1	38	96	55	14	1	0	2	2	0	209	3	26	89	22	13	10	1	1	3	0	168	2	379
H20.0	Acute and subacute iridocyclitis	0	0	3	2	3	2	5	2	3	0	20	0	0	0	0	5	3	3	2	7	0	20	0	40
H20.1	Chronic iridocyclitis	0	0	0	1	5	1	1	1	0	0	9	0	0	3	0	5	7	1	1	3	0	20	0	29
H20.8	Other iridocyclitis	0	0	0	0	1	0	0	1	0	0	2	0	0	0	1	0	2	3	1	1	0	8	0	10
H20.9	Iridocyclitis, unspecified	1	0	7	33	45	34	19	18	42	1	200	1	2	9	19	63	33	35	42	65	2	271	0	471
H21.0	Hypohaema	0	4	9	12	9	5	0	0	5	0	44	0	0	0	2	4	4	0	4	3	0	17	1	62
H21.1	Other vascular disorders of iris and ciliary body	0	0	0	0	0	0	0	0	0	0	0	0	0	0	0	0	1	0	0	0	0	1	0	1
H21.2	Degeneration of iris and ciliary body	0	0	0	1	0	0	0	0	1	0	2	0	0	1	0	0	0	0	1	0	0	2	0	4
H21.5	Other adhesions and disruptions of iris and ciliary body	0	0	1	0	1	0	1	1	1	0	5	0	0	0	0	0	0	0	1	0	0	1	0	6
H21.8	Other specified disorders of iris and ciliary body	0	0	4	4	0	2	0	0	0	1	11	0	0	4	1	1	2	0	0	0	0	8	0	19
H21.9	Disorder of iris and ciliary body, unspecified	0	0	2	0	0	0	0	1	1	0	4	0	0	1	0	1	0	2	0	0	0	4	0	8
H22.0*	Iridocyclitis in infectious and parasitic diseases classified elsewhere	0	0	0	0	0	0	0	0	0	0	0	0	0	0	0	0	0	1	0	0	0	1	0	1
Sub Total		3	93	276	287	278	193	176	187	554	24	2,071	8	85	249	197	272	230	210	236	603	22	2,112	5	4,188

Annex 1 : Eye Out-Patient Attendances by Sex and Age Group Cont..

ICD10 Code	Diagnosis	Males											Females											Total	N/S	Grand Total
		<1	1-4	5-14	15-24	25-34	35-44	45-54	55-64	65+	N/S	Total	<1	1-4	5-14	15-24	25-34	35-44	45-54	55-64	65+	N/S	Total			
H25-H28	Diseases of lens																									
H25.0	Senile incipient cataract	1	1	4	5	1	7	2	5	33	1	60	0	0	4	4	4	6	15	23	77	1	134	0	194	
H25.1	Senile nuclear cataract	0	0	0	0	0	0	2	1	2	5	5	0	0	0	0	0	0	1	1	3	0	6	0	11	
H25.2	Senile cataract, marginian type	0	0	0	0	0	0	2	7	10	20	20	0	0	0	0	0	0	2	6	22	1	32	0	52	
H25.8	Other senile cataract	0	1	5	2	2	1	3	8	391	413	0	1	5	3	3	3	7	7	686	2	717	3	1,133		
H25.9	Senile cataract, unspecified	0	0	3	1	1	1	1	12	23	42	0	0	0	0	1	2	6	14	46	1	70	0	112		
H26.0	Infantile, juvenile and presenile cataract	0	0	0	0	0	0	0	2	0	2	0	0	0	0	0	0	0	0	1	0	0	1	0	3	
H26.1	Traumatic cataract	0	3	29	25	36	30	16	16	11	167	1	3	7	6	5	7	6	6	13	0	54	0	221		
H26.2	Complicated cataract	0	1	1	2	2	1	1	6	8	22	0	1	0	0	0	2	0	1	1	11	0	15	0	37	
H26.3	Drug-induced cataract	0	0	0	0	0	0	0	0	1	1	0	0	0	0	0	0	0	0	0	0	0	0	0	1	
H26.4	After-cataract	0	0	0	0	0	0	0	0	1	1	0	0	0	2	0	0	0	0	1	1	0	4	0	5	
H26.8	Other specified cataract	0	1	17	10	14	27	71	203	573	918	0	4	17	16	17	30	89	272	1,025	4	1,474	3	2,395		
H26.9	Cataract, unspecified	1	8	34	18	20	22	67	220	836	1,245	0	14	26	17	24	50	139	579	2,212	21	3,082	3	4,330		
H27.0	Aphakia	0	1	2	6	3	3	0	11	56	84	0	0	3	1	2	10	4	0	48	1	69	0	153		
H27.1	Dislocation of lens	0	0	0	0	0	1	0	3	3	8	0	0	0	0	1	0	0	1	3	0	5	0	13		
H27.8	Other specified disorders of lens	0	0	1	0	0	0	0	1	0	2	0	0	0	0	0	0	0	0	1	1	0	2	0	4	
H27.9	Disorder of lens, unspecified	0	0	0	0	0	0	0	1	4	5	0	0	0	0	0	1	2	0	8	0	11	0	16		
H28.0	Diabetic cataract (E10-E14+ with common fourth character .3)	0	0	0	0	0	0	0	0	0	0	0	0	0	0	0	0	1	0	0	0	1	0	1	0	
H28.1	Cataract in endocrine, nutritional and metabolic diseases	0	0	0	0	0	0	0	0	0	0	0	0	0	0	0	3	0	2	0	0	5	0	5		
H28.8	Other disorders of lens in diseases classified elsewhere	0	0	0	0	0	0	0	0	1	1	0	0	0	0	0	0	0	0	2	0	2	0	3		
	Sub Total	2	16	96	69	79	93	165	496	1,953	27	2,996	1	23	62	51	57	114	272	915	4,158	31	5,684	9	8,689	

Annex1 :Eye Out-Patient Attendances by Sex and Age Group Cont..

ICD10 Code	Diagnosis	Males										Females										Grand Total			
		<1	1-4	5-14	15-24	25-34	35-44	45-54	55-64	65+	N/S	Total	<1	1-4	5-14	15-24	25-34	35-44	45-54	55-64	65+		N/S	Total	
H30-H36	Disorders of choroid and retina																								
H30.0	Focal chorioretinal inflammation	0	0	0	0	0	0	0	0	0	0	0	0	0	0	0	0	0	0	0	0	0	0	0	0
H30.1	Disseminated chorioretinal inflammation	0	0	1	0	0	0	0	0	0	0	0	0	0	0	0	0	0	0	0	0	0	0	0	0
H30.8	Other chorioretinal inflammations	0	0	2	0	0	0	0	0	0	0	0	0	0	0	0	0	0	0	0	0	0	0	0	0
H30.9	Chorioretinal inflammation, unspecified	0	0	0	2	1	2	1	2	0	4	0	11	0	0	2	0	0	3	2	0	0	7	0	18
H31.0	Chorioretinal scars	0	0	1	1	4	7	2	1	1	1	0	17	0	0	1	2	2	2	2	4	1	16	0	33
H31.1	Choroidal degeneration	0	0	0	0	0	0	0	0	0	0	0	0	0	0	0	0	0	0	0	0	0	3	0	3
H33.0	Retinal detachment with retinal break	0	0	0	0	3	1	0	0	0	0	4	0	0	2	1	0	0	1	0	2	0	6	0	10
H33.2	Serous retinal detachment	0	1	0	1	0	3	1	1	0	0	7	0	0	2	2	0	1	5	0	0	0	10	0	17
H33.4	Traction detachment of retina	0	0	0	0	0	0	0	0	0	2	0	2	0	0	0	0	0	0	0	0	0	0	0	2
H33.5	Other retinal detachments	0	0	0	0	2	0	6	2	0	0	10	0	0	0	0	0	4	5	0	0	0	11	0	21
H34.2	Other retinal artery occlusions	0	0	0	0	0	1	0	0	0	0	1	0	0	0	0	0	0	0	0	1	0	1	0	2
H34.8	Other retinal vascular occlusions	0	0	1	0	0	3	1	0	1	0	6	0	0	2	1	1	0	3	4	0	0	11	0	17
H35.0	Background retinopathy and retinal vascular changes	0	1	0	7	5	6	9	6	16	0	50	0	1	7	1	6	17	21	29	36	1	119	2	171
H35.1	Retinopathy of prematurity	0	1	0	0	0	0	0	0	0	0	1	2	4	0	0	1	0	0	1	0	0	8	0	9
H35.2	Other proliferative retinopathy	0	0	0	0	0	1	0	0	0	0	1	0	0	0	0	0	0	0	0	1	0	1	0	2
H35.3	Degeneration of macula and posterior pole	0	1	2	13	8	10	8	15	12	2	71	0	1	2	3	16	9	16	22	36	0	105	2	178
H35.4	Peripheral retinal degeneration	0	0	0	4	1	1	1	1	6	1	15	0	0	0	0	0	1	1	1	1	0	4	0	19
H35.5	Hereditary retinal dystrophy	0	0	2	1	0	4	0	0	2	0	9	0	0	0	2	2	4	2	8	0	0	18	0	27
H35.6	Retinal haemorrhage	0	0	0	0	0	1	1	0	0	1	3	0	0	0	2	2	2	3	3	0	0	12	0	15
H35.7	Separation of retinal layers	0	0	0	0	0	0	0	1	0	0	1	0	0	0	0	0	0	0	1	0	0	1	0	2
H35.8	Other specified retinal disorders	0	0	0	0	0	1	0	0	6	0	7	0	0	1	0	0	5	2	16	0	0	26	0	33
H35.9	Retinal disorder, unspecified	0	0	0	0	2	0	1	1	1	0	5	0	0	1	4	0	0	0	0	0	0	5	0	10
H36.0	Diabetic retinopathy (E10-E14+ with common fourth character .3)	0	0	0	0	0	0	0	0	0	0	0	0	0	0	0	0	0	1	1	0	2	0	2	
Sub Total		0	4	9	29	26	41	32	29	51	4	225	2	6	15	16	36	41	58	81	115	2	372	4	601

Annex1 :Eye Out-Patient Attendances by Sex and Age Group Cont..

ICD10 Code	Diagnosis	Males											Females											Total	N/S	Grand Total
		<1	1-4	5-14	15-24	25-34	35-44	45-54	55-64	65+	N/S	Total	<1	1-4	5-14	15-24	25-34	35-44	45-54	55-64	65+	N/S	Total			
		4	19	89	170	250	371	601	1,009	2,365	42	4,920	1	17	64	186	275	407	618	1,124	3,347	58	6,097			
H40-H42	Disease of glaucoma																									
H40.0	Glaucoma suspect	1	1	23	42	52	42	94	112	3	418	0	1	20	52	56	70	94	107	186	5	591	1	1,010		
H40.1	Primary open-angle glaucoma	1	0	3	7	15	44	59	145	7	654	0	0	3	13	24	20	68	110	438	11	687	0	1,341		
H40.2	Primary angle-closure glaucoma	0	0	1	2	0	1	2	3	17	26	0	0	0	0	0	0	1	6	26	0	33	0	59		
H40.3	Glaucoma secondary to eye trauma	0	0	0	1	4	0	1	0	1	7	0	0	0	0	0	1	0	3	6	0	10	0	17		
H40.4	Glaucoma secondary to eye inflammation	0	0	0	1	1	0	0	0	0	2	0	0	0	1	0	0	1	1	1	0	4	0	6		
H40.5	Glaucoma secondary to other eye disorders	0	0	0	0	3	4	1	8	43	59	0	0	1	2	1	0	0	11	71	1	87	0	146		
H40.6	Glaucoma secondary to drugs	0	0	0	0	0	0	0	0	1	1	0	0	0	0	0	0	0	0	0	0	0	0	0	1	
H40.8	Other glaucoma	0	0	0	1	0	0	4	3	1	9	0	0	1	0	0	0	1	0	8	0	10	0	19		
H40.9	Glaucoma, unspecified	2	18	62	116	175	280	490	755	1,815	3,744	1	16	39	118	194	316	453	886	2,611	41	4,675	19	8,438		
Sub Total		4	19	89	170	250	371	601	1,009	2,365	42	4,920	1	17	64	186	275	407	618	1,124	3,347	58	6,097	20	11,037	
H43-H45	Diseases of vitreous body and globe																									
H43.0	Vitreous prolapse	0	0	0	1	0	0	0	0	0	1	0	0	0	0	0	0	0	0	0	0	0	0	0	1	
H43.1	Vitreous haemorrhage	0	2	0	1	4	2	0	0	0	9	0	0	0	0	0	0	0	0	2	0	2	0	11		
H43.2	Crystalline deposits in vitreous body	0	0	0	0	0	0	0	1	0	1	0	0	0	0	0	0	0	1	2	0	3	0	4		
H43.3	Other vitreous opacities	0	0	1	8	0	5	2	5	4	25	0	0	2	4	12	5	3	13	11	0	50	1	76		
H43.8	Other disorders of vitreous body	0	0	0	1	0	0	0	1	0	2	0	0	0	0	0	0	0	0	0	0	0	0	2		
H43.9	Disorder of vitreous body, unspecified	0	0	0	0	0	0	0	0	0	0	0	0	0	0	0	0	0	1	0	0	1	0	1		
H44.0	Purulent endophthalmitis	0	0	0	1	1	1	2	7	22	34	0	1	3	1	0	2	0	7	10	1	25	0	59		
H44.1	Other endophthalmitis	0	0	0	0	0	0	0	0	0	0	0	0	0	0	1	0	0	0	0	1	0	1	0		
H44.2	Degenerative myopia	0	0	0	0	0	0	0	1	0	1	0	0	0	0	0	0	0	0	1	0	1	0	2		
H44.3	Other degenerative disorders of globe	0	0	0	0	0	0	0	0	1	1	0	0	0	0	0	0	0	0	2	0	2	0	3		
H44.5	Degenerated conditions of globe	1	2	10	5	9	11	11	44	248	2	343	0	3	8	6	15	3	18	37	188	1	279	1	623	
H44.7	Retained (old) intraocular foreign body, nonmagnetic	0	0	0	0	1	0	0	0	0	1	0	0	0	0	0	0	1	0	1	0	2	0	3		
H44.9	Disorder of globe, unspecified	0	1	0	0	0	1	0	0	3	5	0	0	0	0	0	0	0	0	0	0	0	0	0	5	
Sub Total		1	5	11	17	15	20	15	59	278	2	423	0	4	13	11	28	11	21	60	216	2	366	2	791	

Annex1 :Eye Out-Patient Attendances by Sex and Age Group Cont..

ICD10 Code	Diagnosis	Males											Females											Grand Total			
		<1	1-4	5-14	15-24	25-34	35-44	45-54	55-64	65+	N/S	Total	<1	1-4	5-14	15-24	25-34	35-44	45-54	55-64	65+	N/S	Total				
H46-H48	Diseases of optic nerve and visual pathways																										
H46	Optic neuritis	0	0	1	5	4	4	6	5	1	0	26	0	0	1	5	5	9	9	7	7	0	44				
H47.0	Disorders of optic nerve, not elsewhere classified	0	0	0	0	2	1	0	3	2	0	8	0	0	0	0	0	0	3	0	0	0	3				
H47.1	Papilloedema, unspecified	0	0	1	1	2	4	0	1	1	0	10	0	0	2	6	2	5	4	3	0	0	22				
H47.2	Optic atrophy	0	9	5	14	10	11	21	26	38	6	140	0	4	2	13	21	35	16	23	37	0	151				
H47.3	Other disorders of optic disc	0	0	0	1	0	0	1	0	0	0	2	0	0	0	0	0	0	0	0	0	0	0				
H47.4	Disorders of optic chiasm	0	0	0	1	0	0	0	0	0	0	1	0	0	0	0	0	0	0	0	0	0	1				
H47.5	Disorders of other visual pathways	0	0	0	0	0	0	0	0	0	0	0	0	0	0	0	0	0	1	0	0	1	1				
H47.6	Disorders of visual cortex	0	0	0	0	1	0	0	0	0	1	2	0	0	0	0	0	0	0	0	0	0	2				
H47.7	Disorder of visual pathways, unspecified	0	0	1	0	0	0	0	0	0	0	1	0	0	0	0	0	0	0	0	0	0	1				
H48.0	Optic atrophy in diseases classified elsewhere	0	0	0	0	0	0	0	0	0	0	0	0	0	0	0	1	0	0	0	0	1	1				
H48.8	Other disorders of optic nerve and visual pathways in diseases classified elsewhere	0	0	0	0	1	0	0	0	1	0	2	0	0	0	0	0	0	0	0	1	0	3				
H49.0	Third [oculomotor] nerve palsy	0	0	0	0	0	0	0	1	0	0	1	0	0	0	0	0	0	0	0	0	0	1				
Sub Total		0	9	8	22	20	20	28	36	43	7	193	0	5	5	24	29	49	32	34	45	0	223	0	416		

H49-H52	Diseases of ocular muscles, binocular movement, accommodation and refraction	23	55	433	552	280	321	443	255	214	15	2,591	11	59	617	1,454	859	918	1,097	620	345	25	6,005	9	8,605	
H49.0	Third [oculomotor] nerve palsy	0	0	0	0	0	0	0	0	0	1	0	1	0	0	0	0	0	0	0	0	0	0	0	1	1
H49.2	Sixth [abducent] nerve palsy	0	0	2	0	0	3	0	0	0	0	5	0	0	1	1	1	1	1	0	0	0	0	4	0	9
H49.9	Paralytic strabismus, unspecified	1	0	0	0	0	0	0	0	0	0	1	0	0	0	0	0	0	0	0	0	0	0	0	0	1
H50.0	Convergent concomitant strabismus	2	8	4	3	2	4	0	3	1	0	27	1	12	16	7	1	3	1	2	5	0	48	0	75	
H50.1	Divergent concomitant strabismus	0	0	0	0	0	0	0	0	0	0	0	1	0	0	1	1	0	0	0	0	0	0	3	0	3
H50.2	Vertical strabismus	0	0	1	2	2	3	1	0	3	0	12	0	0	5	3	1	2	0	1	1	0	13	0	25	
H50.3	Intermittent heterotropia	1	4	5	1	1	0	2	2	0	0	16	0	4	1	1	2	4	1	2	3	0	18	0	34	
H50.4	Other and unspecified heterotropia	0	0	0	0	0	0	0	0	0	0	0	0	0	0	0	0	0	0	1	0	0	0	1	0	1
H50.5	Heterophoria	0	1	0	0	0	0	0	0	0	0	1	0	1	0	0	0	0	0	0	0	1	0	2	0	3
H50.9	Strabismus, unspecified	12	35	32	6	5	3	3	3	2	1	102	5	28	25	22	8	10	5	2	3	1	109	1	212	
H51.0	Palsy of conjugate gaze	0	0	0	0	0	0	0	0	0	0	0	0	0	0	0	0	2	0	0	0	0	0	2	0	2
H51.1	Convergence insufficiency and excess	0	0	0	1	0	0	0	0	0	0	1	0	0	0	1	1	2	0	0	0	0	4	0	5	
H52.0	Hypermetropia	0	1	11	20	12	6	1	1	0	2	54	0	1	28	64	30	8	9	3	5	6	154	1	209	
H52.1	Myopia	0	0	63	76	53	28	16	21	4	2	263	1	1	60	216	159	97	30	26	11	3	604	0	867	
H52.2	Astigmatism	2	0	25	5	7	7	1	8	6	3	64	0	0	20	32	16	24	16	7	13	2	130	0	194	
H52.3	Anisometropia and aniseikonia	0	0	2	0	0	1	0	0	0	0	3	0	0	1	1	0	1	0	2	0	0	5	0	8	
H52.4	Presbyopia	2	0	4	3	5	116	293	127	79	3	632	1	4	6	7	17	351	689	321	115	8	1,519	3	2,154	
H52.5	Disorders of accommodation	0	0	0	0	0	0	0	0	0	0	0	0	0	0	0	1	0	0	0	0	0	1	0	1	
H52.7	Disorder of refraction, unspecified	3	6	284	435	193	150	126	90	118	4	1,409	2	8	454	1,098	619	415	345	254	188	5	3,388	4	4,801	
Sub Total		23	55	433	552	280	321	443	255	214	15	2,591	11	59	617	1,454	859	918	1,097	620	345	25	6,005	9	8,605	

Annex1 :Eye Out-Patient Attendances by Sex and Age Group Cont..

ICD10 Code	Diagnosis	Males											Females											Grand Total	
		<1	1-4	5-14	15-24	25-34	35-44	45-54	55-64	65+	N/S	Total	<1	1-4	5-14	15-24	25-34	35-44	45-54	55-64	65+	N/S	Total		
H53-H54	Visual disturbances and blindness																								
H53.0	Amblyopia ex anopsia	0	0	0	2	1	2	1	0	0	0	0	0	0	0	0	0	0	0	0	0	0	0	0	0
H53.1	Subjective visual disturbances	0	2	31	88	40	24	17	8	11	3	224	0	3	63	240	137	73	31	15	23	0	585	2	811
H53.2	Diplopia	0	0	1	1	2	1	3	1	0	0	9	0	0	2	4	6	2	4	4	2	0	24	0	33
H53.3	Other disorders of binocular vision	0	0	0	0	0	0	1	0	1	0	2	0	0	0	0	0	0	0	0	6	0	6	0	8
H53.4	Visual field defects	0	0	0	0	0	1	1	1	0	0	3	0	0	0	2	1	0	0	0	0	0	3	0	6
H53.5	Colour vision deficiencies	0	0	0	12	10	5	1	0	0	0	28	0	0	0	0	0	0	0	0	0	0	0	0	28
H53.6	Night blindness	0	1	1	1	0	3	3	0	0	0	9	0	0	0	1	0	3	0	0	0	0	4	0	13
H53.8	Other visual disturbances	0	0	1	1	1	0	0	0	0	0	3	0	0	1	1	1	0	1	0	0	0	3	0	6
H53.9	Visual disturbance, unspecified	0	0	0	0	0	1	0	0	0	1	2	0	0	1	1	0	0	0	0	0	0	2	1	5
H54.0		0	2	0	3	0	1	0	0	1	1	8	0	0	0	2	3	1	1	1	2	1	11	0	19
H54.1	Blindness, both eyes	0	0	1	0	0	0	1	0	0	0	2	1	2	0	0	1	2	0	1	0	0	7	0	9
H54.2	Blindness, one eye, low vision other eye	0	1	10	4	2	1	0	1	4	0	23	0	1	6	2	3	3	3	2	7	0	27	0	50
H54.4	Low vision, both eyes	0	0	0	0	0	1	2	2	3	0	8	0	0	1	0	1	1	1	3	1	1	9	0	17
H54.5	Blindness, one eye	0	0	0	2	0	1	0	0	0	0	3	0	0	2	0	1	0	2	0	0	0	5	0	8
H54.7	Low vision, one eye	2	3	20	18	19	28	19	27	60	1	197	1	4	21	19	19	36	40	46	99	1	286	0	483
H54.9	Unspecified visual loss	0	1	2	6	1	1	2	3	0	1	17	0	0	1	5	5	10	1	3	4	1	30	0	47
	Sub Total	2	10	67	138	76	70	51	43	80	7	544	2	10	102	280	180	134	86	77	149	4	1,024	3	1,571
H55-H59	Unspecified visual impairment (binocular)																								
H55	Nystagmus and other irregular eye movements	3	2	2	1	2	0	1	1	0	0	12	0	0	4	3	1	3	0	0	0	0	11	0	23
H59.9	Postprocedural disorder of eye and adnexa, unspecified	1	1	0	0	0	0	0	0	0	0	2	0	1	0	0	2	0	1	0	1	0	5	0	7
H57.0	Anomalies of pupillary function	0	2	5	8	7	10	7	2	2	0	43	0	1	1	6	4	8	0	3	4	0	27	0	70
H57.1	Ocular pain	1	4	44	86	43	43	21	24	88	6	360	2	2	85	98	73	88	66	81	179	7	681	0	1,041
H57.8	Other specified disorders of eye and adnexa	0	1	6	0	2	0	1	1	2	0	13	0	0	1	1	3	1	2	0	1	0	9	0	22
H57.9	Disorder of eye and adnexa, unspecified	1	1	6	4	2	4	2	1	6	0	27	0	2	9	9	12	1	5	11	18	0	67	0	94
H59.0	Vitreous syndrome following cataract surgery	0	0	0	2	4	0	0	2	5	0	13	0	0	0	1	0	4	0	7	2	0	14	0	27
H59.8	Other postprocedural disorders of eye and adnexa	0	0	0	0	0	0	0	1	0	0	1	1	0	0	0	0	1	0	0	0	0	2	0	3
H59.9	Postprocedural disorder of eye and adnexa, unspecified	0	0	0	0	0	0	1	0	0	0	1	0	0	0	0	0	0	0	1	1	0	2	0	3
	Sub Total	6	11	63	101	60	57	33	32	103	6	472	3	6	100	118	95	106	74	103	206	7	818	0	1,290

Annex1 :Eye Out-Patient Attendances by Sex and Age Group Cont..

ICD10 Code	Diagnosis	Males											Females							Grand Total						
		>1	1-4	5-14	15-24	25-34	35-44	45-54	55-64	65+	N/S	Total	>1	1-4	5-14	15-24	25-34	35-44	45-54		55-64	65+	N/S	Total		
I00-I99	Diseases of the Circulatory System																									
I10	Essential (primary) hypertension	0	0	1	2	2	6	7	9	8	0	35	0	0	2	1	8	16	12	18	8	0	65	0	0	100
I78.1	Naevus, non-neoplastic	0	0	0	0	0	0	0	0	0	0	0	0	1	0	0	0	0	0	0	0	1	0	1		
I80.1	Phlebitis and thrombophlebitis of femoral vein	0	0	0	0	0	0	0	0	0	0	0	0	0	0	0	1	0	0	0	0	1	0	1		
	Sub Total	0	0	1	2	2	6	7	9	8	0	35	0	1	2	1	8	17	12	18	8	0	67	0	0	102
J00-J99	Diseases of the Respiratory System																									
J00	Acute nasopharyngitis [common cold]	0	0	0	1	0	0	0	0	0	1	2	0	1	2	0	0	0	0	0	0	3	0	5		
J02.9	Acute pharyngitis, unspecified	0	0	0	0	0	0	0	0	0	0	0	0	0	0	0	1	0	0	0	0	1	0	1		
J03.9	Acute tonsillitis, unspecified	0	0	1	0	0	0	0	0	0	1	3	0	1	3	0	1	0	0	0	0	5	0	6		
J05.1	Acute epiglottitis	0	0	0	0	0	0	0	0	0	0	0	0	0	0	0	1	0	0	0	0	1	0	1		
J06.9	Acute upper respiratory infection, unspecified	0	0	0	0	0	0	0	0	0	0	0	1	1	0	1	0	2	0	1	0	6	0	6		
J10.1	Influenza with other respiratory manifestations, influenza virus identified	0	0	0	0	0	0	0	0	0	0	0	0	0	0	0	1	0	0	0	0	1	0	1		
J10.8	Influenza with other manifestations, influenza virus identified	0	0	0	0	0	0	0	0	0	0	0	0	0	1	0	0	0	0	0	0	1	0	1		
J30.1	Allergic rhinitis due to pollen	0	0	0	0	0	0	0	0	0	0	0	0	0	0	0	2	0	0	0	0	2	0	2		
J30.4	Allergic rhinitis, unspecified	0	0	0	1	0	0	0	0	0	0	1	0	0	0	0	0	0	0	0	0	0	0	1		
	Sub Total	0	0	1	1	1	0	0	0	1	4	1	3	6	1	3	5	0	1	0	1	20	0	24		
K00-K93	Diseases of Digestive system																									
K04.0	Pulpitis	0	0	0	0	0	0	0	0	0	0	0	0	0	0	0	1	0	0	0	0	1	0	1		
K28.9	Gastrojejunal ulcer, unspecified as acute or chronic, without haemorrhage or perforation	0	0	0	0	0	0	0	0	0	0	0	0	0	0	0	1	0	0	0	0	1	0	1		
K29	Gastritis and duodenitis,unspecified	0	0	0	0	0	0	0	0	0	0	0	0	0	0	0	0	0	0	1	0	1	0	1		
K51.9	Ulcerative colitis, unspecified	0	0	0	0	0	0	0	0	0	0	0	0	0	0	0	1	0	0	0	0	1	0	1		
	Sub Total	0	0	0	0	0	0	0	0	0	0	0	0	0	0	2	1	0	0	1	0	4	0	4		

Annex1 :Eye Out-Patient Attendances by Sex and Age Group Cont..

ICD10 Code	Diagnosis	Males										Females										N/S	Grand Total		
		<1	1-4	5-14	15-24	25-34	35-44	45-54	55-64	65+	N/S	Total	<1	1-4	5-14	15-24	25-34	35-44	45-54	55-64	65+			N/S	Total
L00-L99	Diseases of the skin and subcutaneous tissue																								
L02.9	Cutaneous abscess, furuncle and carbuncle, unspecified	0	0	0	0	0	0	0	0	0	0	0	0	0	0	0	0	0	0	0	0	0	0	0	1
L03.2	Cellulitis of face	0	2	2	4	0	1	2	0	0	0	0	0	0	0	0	0	0	0	0	0	0	0	0	7
L03.9	Cellulitis, unspecified	0	1	1	0	0	0	0	0	0	0	0	0	0	0	0	0	0	0	0	0	0	0	0	3
L40.0	Psoriasis vulgaris	0	0	0	0	0	0	0	0	0	0	0	0	0	0	0	0	0	0	0	0	0	0	0	1
L51.1	Bullous erythema multiforme	0	0	0	0	0	0	0	0	0	0	0	0	0	0	0	0	0	0	0	0	0	0	0	3
L56.8	Other specified acute skin changes due to ultraviolet radiation	0	0	0	1	0	1	0	0	0	0	0	0	0	0	0	0	0	0	0	0	0	0	0	4
L57.0	Actinic keratosis	0	1	0	0	0	0	0	0	0	0	0	0	0	0	0	0	0	0	0	0	0	0	0	1
L72.1	Trichilemmal cyst	0	0	0	0	0	0	0	0	0	0	0	0	0	0	0	0	0	0	0	0	0	0	0	2
L73.9	Follicular disorder, unspecified	0	0	0	0	2	1	1	0	0	0	0	0	0	0	0	0	0	0	0	0	0	0	0	2
L80	Vitiligo	0	0	0	0	0	0	0	0	0	0	0	0	0	0	0	0	0	0	0	0	0	0	0	2
L98.9	Disorder of skin and subcutaneous tissue, unspecified	0	0	0	0	0	0	0	0	0	0	0	0	0	0	0	0	0	0	0	0	0	0	0	1
	Sub Total	0	4	3	5	2	3	3	0	2	0	2	0	2	0	2	0	2	0	0	2	0	2	0	4
M00-M99	Diseases of the musculoskeletal system and connective tissue																								
M06.9	Rheumatoid arthritis, unspecified	0	0	0	0	0	0	0	0	0	0	0	0	0	0	0	0	0	0	0	0	0	0	0	2
M13.9	Arthritis, unspecified	0	0	0	0	0	0	0	0	0	0	0	0	0	0	0	0	0	0	0	0	0	0	0	1
M34.9	Systemic sclerosis, unspecified	0	0	0	0	0	0	0	0	0	0	0	0	0	0	0	0	0	0	0	0	0	0	0	1
M35.0	Sicca syndrome [Sjogren]	0	0	0	0	0	0	0	0	0	0	0	0	0	0	0	0	0	0	0	0	0	0	0	1
M60.9	Unspecified myositis	0	0	0	0	0	0	0	0	0	0	0	0	0	0	0	0	0	0	0	0	0	0	0	1
M62.9	Unspecified disorder of muscle	0	0	0	1	0	0	0	0	0	0	0	0	0	0	0	0	0	0	0	0	0	0	0	1
M79.2	Neuralgia and neuritis, unspecified	0	0	0	0	0	0	0	0	0	0	0	0	0	0	0	0	0	0	0	0	0	0	0	1
M79.9	Unspecified soft tissue disorder	0	0	0	0	0	0	0	0	0	0	0	0	0	0	0	0	0	0	0	0	0	0	0	1
	Sub Total	0	0	0	1	0	0	0	0	0	0	0	2	0	2	0	2	0	0	0	0	0	0	7	
	Grand Total																								9

Annex1 :Eye Out-Patient Attendances by Sex and Age Group Cont..

ICD10 Code	Diagnosis	Males										Females										N/S	Total	Grand Total													
		<1	1-4	5-14	15-24	25-34	35-44	45-54	55-64	65+	N/S	Total	<1	1-4	5-14	15-24	25-34	35-44	45-54	55-64	65+				N/S	Total											
N00-N99 Diseases of the genitourinary system																																					
N00.0	Acute nephritic syndrome, minor glomerular abnormality	0	0	0	0	0	0	0	0	0	0	0	0	0	0	0	0	0	0	0	0	0	0	0	0	1	0	1									
N15.1	Renal and perinephric abscess	0	0	0	0	0	0	0	0	0	0	0	0	0	0	0	0	0	0	0	0	0	0	0	0	1	0	1									
N28.9	Disorder of kidney and ureter, unspecified	0	0	0	0	0	0	0	0	0	0	0	0	0	0	0	0	0	0	0	0	0	0	0	2	0	2	2									
N36.8	Other specified disorders of urethra	0	0	0	0	0	0	0	0	0	0	0	0	0	0	0	0	0	0	0	0	0	0	0	1	0	1	0	1								
N60.1	Diffuse cystic mastopathy	0	0	0	0	0	0	0	0	0	0	0	0	0	0	0	0	0	0	0	0	0	0	0	0	0	0	0	0	1	0	1					
N94.6	Dysmenorrhoea, unspecified	0	0	0	1	0	0	0	0	0	0	0	0	0	0	0	0	0	0	0	0	0	0	0	0	0	0	0	0	0	0	0	1				
	Sub Total	0	0	0	1	0	0	0	0	0	0	0	0	0	0	0	0	0	0	0	0	0	0	0	0	0	0	0	0	0	0	0	6	0	7		
P00-P96 Certain Conditions originating in the perinatal period																																					
P39.1	Neonatal conjunctivitis and dacryocystitis	9	0	0	0	0	0	0	0	0	0	0	0	0	0	0	0	0	0	0	0	0	0	0	0	0	0	0	0	0	0	0	0	18	0	27	
P39.2	Intra-amniotic infection of fetus, not elsewhere classified	1	0	0	0	0	0	0	0	0	0	0	0	0	0	0	0	0	0	0	0	0	0	0	0	0	0	0	0	0	0	0	0	0	1		
	Sub Total	10	0	0	0	0	0	0	0	0	0	0	0	0	0	0	0	0	0	0	0	0	0	0	0	0	0	0	0	0	0	0	0	18	0	28	
Q00-Q99 Congenital malformations, deformations and chromosomal abnormalities																																					
Q10.0	Congenital ptosis	1	0	0	1	0	0	0	0	0	0	0	0	0	0	0	0	0	0	0	0	0	0	0	0	0	0	0	0	0	0	0	1	0	3		
Q10.3	Other congenital malformations of eyelid	0	0	0	0	0	0	0	0	0	0	0	1	0	0	0	0	0	0	0	0	0	0	0	0	0	0	0	0	0	0	0	0	0	0	1	
Q11.2	Microphthalmos	0	0	1	0	0	0	0	0	0	0	0	0	0	0	0	0	0	0	0	0	0	0	0	0	0	0	0	0	0	0	0	0	0	0	3	
Q12.0	Congenital cataract	2	1	5	2	0	0	0	0	0	0	0	0	0	0	0	0	0	0	0	0	0	0	0	0	0	0	0	0	0	0	0	1	0	27		
Q12.9	Congenital lens malformation, unspecified	0	0	1	0	0	0	0	0	0	0	0	0	0	0	0	0	0	0	0	0	0	0	0	0	0	0	0	0	0	0	0	0	0	1		
Q13.0	Coloboma of iris	0	0	0	0	0	0	0	0	0	0	0	0	0	0	0	0	0	0	0	0	0	0	0	0	0	0	0	0	0	0	0	0	0	0	2	
Q13.4	Other congenital corneal malformations	0	0	0	0	0	0	0	0	0	0	0	0	0	0	0	0	0	0	0	0	0	0	0	0	0	0	0	0	0	0	0	0	0	0	1	
Q14.1	Congenital malformation of retina	0	0	0	1	0	0	0	0	0	0	0	0	0	0	0	0	0	0	0	0	0	0	0	0	0	0	0	0	0	0	0	0	0	0	3	
Q15.0	Congenital glaucoma	3	2	2	1	0	0	0	0	0	0	0	0	0	0	0	0	0	0	0	0	0	0	0	0	0	0	0	0	0	0	0	0	0	11		
Q21.8	Other congenital malformations of cardiac septa	0	0	0	0	0	0	0	0	0	0	0	0	0	0	0	0	0	0	0	0	0	0	0	0	0	0	0	0	0	0	0	2	0	2		
Q61.9	Cystic kidney disease, unspecified	0	0	0	0	0	0	0	0	0	0	0	0	0	0	0	0	0	0	0	0	0	0	0	0	0	0	0	0	0	0	0	0	0	0	1	
Q89.9	Congenital malformation, unspecified	0	0	0	0	0	0	0	0	0	0	0	0	0	0	0	0	0	0	0	0	0	0	0	0	0	0	0	0	0	0	0	0	0	0	2	
Q90.9	Down's syndrome, unspecified	0	0	0	1	0	0	0	0	0	0	0	0	0	0	0	0	0	0	0	0	0	0	0	0	0	0	0	0	0	0	0	0	0	0	2	
	Sub Total	6	3	9	6	0	0	0	0	0	0	0	0	0	0	0	0	0	0	0	0	0	0	0	0	0	0	0	0	0	0	0	0	0	1	0	59

Annex1 :Eye Out-Patient Attendances by Sex and Age Group Cont..

ICD10 Code	Diagnosis	Males										Females										Grand Total								
		>1	1-4	5-14	15-24	25-34	35-44	45-54	55-64	65+	N/S	Total	>1	1-4	5-14	15-24	25-34	35-44	45-54	55-64	65+		N/S	Total						
S05.1	Contusion of eyeball and orbital tissues	0	0	3	4	4	1	2	2	0	0	2	2	0	0	16	0	0	4	6	5	0	1	1	1	0	18	0	34	
S05.2	Ocular laceration and rupture with prolapse or loss of intraocular tissue	0	1	2	2	2	0	1	0	0	0	0	0	0	0	8	1	0	0	0	0	0	1	0	1	0	3	0	11	
S05.3	Ocular laceration without prolapse or loss of intraocular tissue	0	3	5	4	5	0	2	3	2	0	24	3	2	0	24	0	2	4	3	1	6	2	2	4	0	24	0	48	
S05.4	Penetrating wound of orbit with or without foreign body	0	0	0	0	1	0	0	0	0	0	1	0	0	0	1	0	0	1	0	0	0	0	0	0	0	1	0	2	
S05.5	Penetrating wound of eyeball with foreign body	0	0	2	3	1	2	0	0	0	0	8	0	0	0	8	0	0	1	0	0	0	1	0	0	0	2	0	10	
S05.6	Penetrating wound of eyeball without foreign body	0	0	0	0	1	1	0	0	0	0	2	0	0	0	2	0	0	0	1	0	0	0	0	0	0	1	0	3	
S05.7	Avulsion of eye	0	0	0	1	3	4	2	1	3	0	14	0	0	0	14	0	0	2	0	0	0	0	1	1	0	4	0	18	
S05.8	Other injuries of eye and orbit	0	10	18	20	23	9	12	4	7	0	103	0	6	11	5	7	6	11	6	5	7	6	11	6	5	0	57	2	162
S05.9	Injury of eye and orbit, unspecified	0	17	47	52	71	53	16	12	20	2	290	0	8	22	29	52	20	18	16	20	2	187	0	2	187	0	477		
S09.9	Unspecified injury of head	0	0	1	1	0	0	1	0	1	0	4	0	0	2	4	0	0	2	0	1	0	1	0	1	0	5	0	9	
T14.0	Superficial injury of unspecified body region	0	1	1	2	0	0	0	0	0	0	4	1	1	1	4	1	1	1	0	0	0	1	0	0	0	4	0	8	
T14.1	Open wound of unspecified body region	0	0	0	0	0	2	0	0	0	0	2	0	0	0	2	0	0	0	0	0	0	0	0	0	0	0	0	2	
T14.9	Injury, unspecified	0	1	4	1	11	5	2	1	6	0	31	0	3	0	31	0	3	0	1	4	3	2	1	5	1	20	0	51	
T15.0	Foreign body in cornea	0	10	27	61	158	156	72	34	17	1	536	0	6	12	15	30	20	11	17	10	0	121	0	2	121	2	659		
T15.1	Foreign body in conjunctival sac	0	3	14	14	12	17	3	3	3	0	69	0	2	6	9	6	8	4	7	8	1	51	0	2	51	0	120		
T15.9	Foreign body on external eye, part unspecified	0	4	15	21	31	25	16	4	3	3	122	0	0	7	6	12	10	7	6	7	1	56	0	7	56	0	178		
T20.0	Burn of unspecified thickness of head and neck	0	0	0	0	0	0	0	0	0	0	0	0	0	1	0	0	0	1	0	0	0	0	0	0	0	2	0	2	
T25.0	Burn of unspecified degree of ankle and foot	0	0	0	0	1	0	0	0	0	0	1	0	0	1	0	0	0	0	0	0	0	0	0	0	0	1	0	2	
T26.0	Burn of eyelid and periocular area	0	0	2	0	0	1	0	0	0	0	3	0	0	1	0	2	0	1	0	2	0	4	0	0	4	0	7		
T26.1	Burn of cornea and conjunctival sac	0	0	0	2	0	2	2	2	0	0	8	0	0	2	1	5	0	2	0	1	5	0	2	0	1	11	0	19	
T26.4	Burn of eye and adnexa, part unspecified	3	2	3	1	7	1	2	0	0	0	19	0	1	2	5	0	0	1	0	0	0	1	0	0	0	9	0	28	
T26.5	Corrosion of eyelid and periocular area	0	0	0	0	0	0	0	0	0	0	0	0	0	1	0	0	0	0	0	0	0	0	0	0	0	1	0	1	
T26.6	Corrosion of cornea and conjunctival sac	0	1	1	2	1	1	0	1	0	0	7	0	0	0	7	0	1	0	1	2	1	0	1	1	0	5	0	12	
T26.9	Corrosion of eye and adnexa, part unspecified	0	2	13	22	36	25	17	5	3	2	125	0	7	4	9	21	35	9	4	6	0	95	0	6	95	0	220		
T37.1	Antimycobacterial drugs	0	0	0	0	0	1	0	0	1	0	2	0	0	0	2	0	0	0	0	0	0	0	1	0	0	1	0	3	
T37.8	Other specified systemic anti-infectives and antiparasitics	0	0	0	0	0	0	0	0	0	0	0	0	0	0	0	0	0	0	0	0	0	0	1	0	0	1	0	1	

Annex1 :Eye Out-Patient Attendances by Sex and Age Group Cont..

ICD10 Code	Diagnosis	Males											Females											Grand Total					
		<1	1-4	5-14	15-24	25-34	35-44	45-54	55-64	65+	N/S	Total	<1	1-4	5-14	15-24	25-34	35-44	45-54	55-64	65+	N/S	Total						
T50.9	Other and unspecified drugs, medicaments and biological substances	0	0	0	0	0	0	3	0	0	0	0	0	0	0	0	0	0	0	0	0	0	0	0	0	0	0	3	
T63.0	Snake venom	0	0	2	0	1	1	1	0	1	0	0	0	0	0	0	0	0	0	0	0	0	0	0	0	0	0	7	
T63.4	Venom of other arthropods	0	0	4	0	0	0	0	0	0	0	0	0	0	0	0	0	0	0	0	0	0	0	0	0	0	0	8	
T78.1	Other adverse food reactions, not elsewhere classified	0	0	0	0	0	0	0	0	0	0	0	0	0	0	0	0	0	0	0	0	0	0	0	0	0	0	2	
T78.4	Allergy, unspecified	1	7	26	19	7	14	3	8	8	0	3	8	8	0	93	3	5	40	58	25	24	27	14	40	0	236	0	329
T78.9	Adverse effect, unspecified	0	0	0	0	0	0	0	1	0	0	0	0	0	0	1	0	0	0	0	0	0	0	0	0	0	0	0	1
T79.2	Traumatic secondary and recurrent haemorrhage	0	0	0	0	0	0	0	0	0	0	0	0	0	0	0	0	0	0	0	0	0	0	0	0	0	0	0	1
T81.3	Disruption of operation wound, not elsewhere classified	0	0	1	0	0	0	0	0	0	0	0	0	0	0	1	0	0	0	0	0	0	0	0	0	0	0	0	1
T85.2	Mechanical complication of intraocular lens	0	0	0	0	0	0	0	0	0	0	0	0	0	0	0	0	0	0	0	0	0	0	0	0	0	0	0	1
T86.0	Bone-marrow transplant rejection	0	0	0	1	1	0	1	1	0	0	1	1	0	0	4	0	0	0	0	0	0	0	0	0	0	0	0	4
T88.7	Unspecified adverse effect of drug or medication	0	0	0	0	0	0	0	1	0	0	0	1	0	0	1	0	0	0	0	0	0	0	0	0	0	0	0	1
T84.9	Complications of internal orthopaedic prosthetic devices, implants and grafts	0	0	0	0	0	0	0	0	0	0	0	0	0	0	0	0	0	0	0	0	0	0	0	0	0	0	0	1
Sub Total		15	129	391	444	692	546	304	169	156	19	2,865	8	100	268	240	337	282	202	161	176	10	1,784	8	4,657				

Annex1 :Eye Out-Patient Attendances by Sex and Age Group Cont..

ICD10 Code	Diagnosis	Males										Females										Total	N/S	Grand Total		
		<1	1-4	5-14	15-24	25-34	35-44	45-54	55-64	65+	N/S	Total	<1	1-4	5-14	15-24	25-34	35-44	45-54	55-64	65+				N/S	Total
Z00-Z99	Factors influencing Health Status and contact with Health services																									
Z01.0	Examination of eyes and vision	25	46	308	555	540	367	205	140	110	10	2,306	14	44	294	652	930	735	436	315	125	8	3,553	1	5,860	
Z01.1	Examination of ears and hearing	0	0	1	0	0	0	0	0	2	0	3	0	0	0	3	2	0	0	1	0	0	0	6	0	9
Z02.9	Examination for administrative purposes, unspecified	0	0	0	0	0	1	0	0	0	0	1	0	0	0	0	1	1	0	0	0	0	0	2	0	3
Z08.0	Follow-up examination after surgery for malignant neoplasm	0	0	0	0	0	0	0	0	0	0	0	0	1	0	0	0	0	0	0	0	0	0	1	0	1
Z09.8	Follow-up examination after other treatment for other conditions	0	0	0	2	9	7	4	4	0	0	26	0	0	0	0	0	0	2	0	0	0	0	2	0	28
Z10.1	Routine general health check-up of inhabitants of institutions	0	0	1	0	0	0	0	0	0	0	1	0	0	0	0	0	0	0	0	0	0	0	1	0	2
Z13.1	Special screening examination for diabetes mellitus	0	0	0	0	0	0	1	0	1	0	2	0	0	0	0	0	0	0	0	0	0	0	0	0	2
Z13.5	Special screening examination for eye and ear disorders	0	0	0	0	0	3	1	2	1	0	7	0	0	1	0	1	9	2	8	4	0	25	0	32	
Z21	Asymptomatic human immunodeficiency virus [HIV] infection status	0	0	0	0	0	0	0	0	0	0	0	0	0	0	1	0	0	0	0	0	0	1	0	1	
Z41.8	Other procedures for purposes other than remedying health state	0	6	2	3	10	2	4	0	0	1	28	0	1	5	1	0	4	2	1	0	0	14	0	42	
Z48.0	Attention to surgical dressings and sutures	0	0	0	0	1	2	0	0	1	0	4	0	0	0	0	0	0	0	0	0	0	0	0	0	4
Z48.8	Other specified surgical follow-up care	0	0	0	0	0	0	0	0	0	0	0	0	0	0	0	0	0	1	0	0	0	1	0	1	

Annex 1 :Eye Out-Patient Attendances by Sex and Age Group Cont..

ICD10 Code	Diagnosis	Males										Females										Grand Total				
		<1	1-4	5-14	15-24	25-34	35-44	45-54	55-64	65+	N/S	Total	<1	1-4	5-14	15-24	25-34	35-44	45-54	55-64	65+		N/S	Total		
Z58.9	Problem related to physical environment, unspecified	0	0	0	0	0	0	1	0	0	0	0	0	0	0	0	0	0	0	0	0	0	0	0	0	1
Z86.7	Personal history of diseases of the circulatory system	0	0	0	1	0	0	1	0	0	0	0	0	0	0	0	0	0	0	0	0	0	0	0	0	1
Z90.0	Acquired absence of part of head and neck	1	0	3	1	3	12	6	7	13	1	47	0	0	6	1	6	5	4	6	9	0	37	0	84	
Z90.1	Acquired absence of breast(s)	0	0	0	0	0	0	0	0	0	0	0	0	0	0	0	0	0	0	1	0	0	1	0	1	
Z91.1	Personal history of noncompliance with medical treatment and regimen	0	1	1	3	0	0	0	1	3	0	9	0	0	1	3	0	1	1	0	7	0	13	0	22	
Z91.5	Personal history of self-harm	0	0	0	0	1	0	0	0	0	0	1	0	0	0	2	0	0	0	0	0	0	2	0	3	
Z94.7	Corneal transplant status	0	1	3	2	6	2	1	2	1	0	18	0	0	1	3	6	2	2	0	2	0	16	0	34	
Z96.1	Presence of intraocular lens	0	8	29	37	45	76	95	278	1,225	15	1,808	4	12	24	28	47	70	162	453	2,213	31	3,044	9	4,861	
Z97.0	Presence of artificial eye	0	0	0	0	0	0	0	0	0	0	0	0	0	0	0	0	0	2	0	0	2	0	2	2	
Z98.8	Other specified postprocedural states	0	0	1	1	0	0	0	4	2	0	8	0	0	0	0	2	0	1	2	5	0	10	0	18	
	Sub Total	26	62	349	605	615	472	318	438	1,359	27	4,271	18	58	332	694	995	827	615	787	2,366	39	6,731	10	11,012	
	Grand Total	439	1,693	4,837	4,228	4,380	4,046	3,448	3,657	8,159	236	35,123	336	1,438	4,617	6,073	6,600	6,807	6,219	6,639	14,458	306	53,493	120	88,736	

A close-up, high-resolution photograph of a human eye. The eye is the central focus, with the iris reflecting a serene forest scene with tall trees and a clear sky. The surrounding skin and eyelashes are visible, adding texture and depth to the image. The overall color palette is dominated by natural tones, with a slight blue tint in the lower half of the frame.

Eye Out-Patient
Statistics Report 2019