



# ELECTRICITY GENERATION AND DISTRIBUTION

STATS BRIEF, FIRST QUARTER 2026

---

**Contact Statistician:** Laronka Kaisara  
**Industry Statistics Unit**  
**Email:** [lkaisara@statsbots.org.bw](mailto:lkaisara@statsbots.org.bw)  
**Tel:** (+267) 367 – 1300; Ext. 326

Private Bag 0024, Gaborone.  
**Tel:** 3671300 **Toll Free:** 0800 600 200

**E-mail:** [info@statsbots.org.bw](mailto:info@statsbots.org.bw)  
**Website:** <http://www.statsbots.org.bw>



**STATISTICS BOTSWANA**

## TABLE OF CONTENTS

Preface.....	3
1.0 Summary of Findings of the Index of Electricity Generation (IEG).....	4
1.1 Electricity Generation.....	4
1.2 Imported Electricity.....	5
1.3 Distribution of Electricity .....	6
1.3.1 Contribution of Electricity Generation to Distribution.....	7
2.0 Technical Notes.....	8
2.1 Background.....	8
2.2 Concepts and formula of the Index of Electricity Generation, Importation and Distribution.....	8
2.3 Base Year.....	8
Appendix 1.....	10

## LIST OF TABLES

Table 1: Selected Key Indicators of Electricity Generation: 2016 First Quarter to 2026 First Quarter.....	10
Table 2: Electricity Generation by Source in MWH: First Quarter 2026.....	11
Table 3: Physical Volume of Electricity Generation MWH: January 2016 – March 2026.....	11
Table 4: Indices of Physical Volume of Electricity Generation: January 2016 – March 2026.....	11
Table 5: Annual Percentage Changes in the Indices of the Physical Volume of Electricity Generation: January 2016 – March 2026.....	12
Table 6: Quarter-on-Quarter Percentage Changes in the Physical Volume of Electricity Generation: 2016 Q1– March 2025.....	12
Table 7: Physical Volume of Imported Electricity MWH: January 2016 – March 2025.....	12
Table 8: Annual Percentage Changes in the Physical Volume of Imported Electricity: January 2016 – March 2026.....	13
Table 9: Quarter-on-Quarter Percentage Changes in the Physical Volume of Imported Electricity: 2016 Q1 – 2026 Q1 .....	13
Table 10: Imported Electricity by Source in MWH: First Quarter 2026.....	13
Table 11: Physical Volume of Electricity Distribution MWH January 2016 – March 2026.....	14
Table 12: Annual Percentage Changes for the Physical Volume of Electricity Distribution: January 2016 – March 2025.....	14
Table 13: Quarter-on-Quarter Percentage Changes in the Physical Volume of Electricity Distribution: 2016 Q1 – 2026 Q1 .....	14
Table 14: Generation of Electricity (MWH) as a Percentage of Distribution 2016- March 2026.....	15

## LIST OF FIGURES

Figure 1: Index of Electricity Generation (MWH): 2016 First Quarter to 2026 First Quarter.....	4
Figure 2: Physical Volume of Imported Electricity (MWH): 2016 First Quarter to 2025 First Quarter.....	5
Figure 3: Imported Electricity by Source: First Quarter 2026.....	6
Figure 4: Physical Volume of Distributed Electricity (MWH): 2016 First Quarter to 2026 First Quarter.....	7

## PREFACE

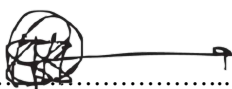
Statistics Botswana compiles data on industrial production in Botswana, hence electricity indices in this report are only confined to electricity generated locally. However, importation and distribution volumes, and their percentage changes are included as well. This indicates Botswana's progress over time, towards generating adequate electricity to meet her demand. The data used in this brief is sourced from the Botswana Power Corporation.

This statistical brief is intended to apprise on Electricity Generation, Importation and Distribution by presenting Monthly, Quarterly and Yearly Volumes as well as Indices for Electricity Generation in Botswana. Also included are Year-on-Year and Quarter-on-Quarter percentage changes in Indices of Electricity Generation from 2016 to the first quarter of 2026. In subsequent sections of this report, emphasis is on the Year-on-Year and Quarter-on-Quarter percentage changes in the physical volume of electricity generation, importation and distribution. The base year for the indices is 2013.

During the first quarter of 2026, the Index of Electricity Generation (IEG) stood at 214.5, representing a year-on-year increase of 72.8 percent from 124.2 recorded in the same quarter of 2025. On a quarterly basis, the index increased by 20.0 percent, from 178.8 during the fourth quarter of 2025 to 214.5 during the current quarter.

For more information, contact the Directorate of Stakeholder Relations at 3671300. All Statistics Botswana outputs/publications are available on the website at [www.statsbots.org.bw](http://www.statsbots.org.bw) and also at Statistics Botswana Information Resource Centre (Head-Office, Gaborone).

I sincerely thank all stakeholders involved in the formulation of this brief for their continued support, as we strive to better serve users of our products and services.



.....  
**Dr Khaufelo Raymond Lekobane**  
**Statistician General**  
**June 2026**

## 1.0 Summary of Findings of the Index of Electricity Generation (IEG)

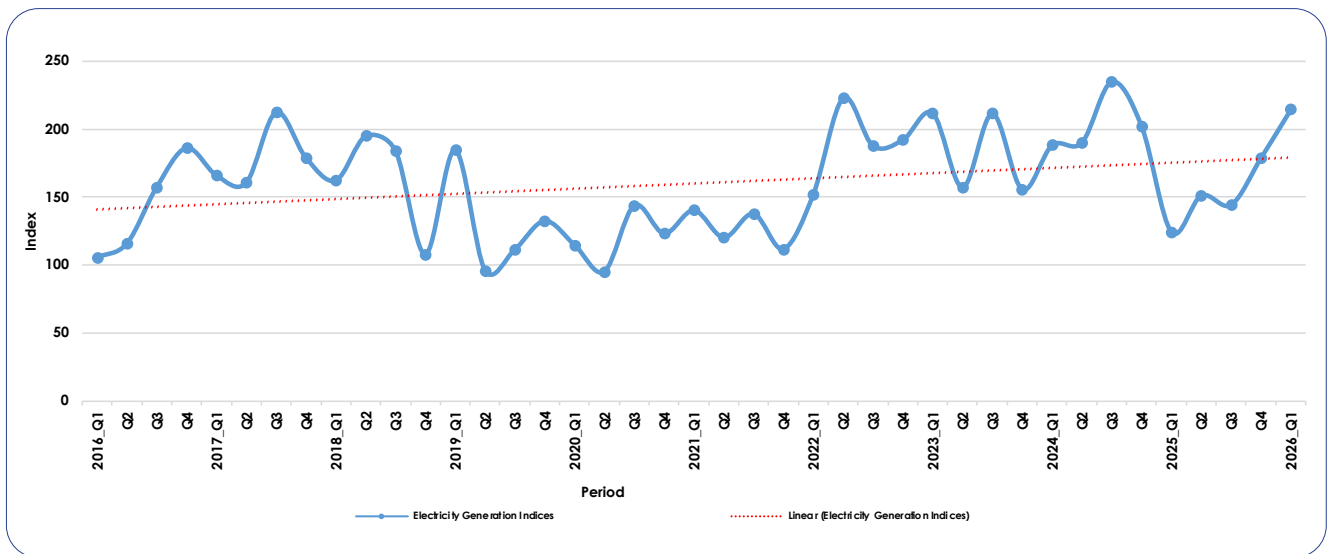
All figures in this report are not seasonally adjusted.

The Index of Electricity Generation (IEG) stood at **214.5** in the first quarter of 2026, representing an increase of **72.8 percent** compared to **124.2** recorded in the corresponding quarter of 2025. On a quarter-on-quarter basis, the index increased by **20.0 percent**, compared to the preceding quarter.

A comprehensive overview of key electricity generation indicators covering the period from the first quarter of 2016 to the first quarter of 2026 is presented in **Table 1**.

**Figure 1** presents the trend of the Index of Electricity Generation from the first quarter of 2016 to the first quarter of 2026. Despite fluctuations, the trend shows a steady increase in local generation capacity, which continues to support Botswana's electricity supply.

**Figure 1: Index of Electricity Generation (MWh): 2016 First Quarter to 2026 First Quarter**



### 1.1 Electricity Generation

This Sub-Section discusses the sources of electricity generation as presented in **Table 2**. The physical volume of electricity generated locally is presented in **Table 3**, which forms the basis for the computation of indices of electricity generation in **Table 4**. The Year-on-Year and Quarter-on-Quarter percentage changes in the physical volume of electricity generated are presented in **Table 5** and **Table 6**, covering 2016 to the first quarter of 2026.

The physical volume of generated electricity increased by **72.8 percent** (379, 872 MWh), from 522, 031 MWh during the first quarter of 2025 to 901, 903 MWh during the quarter under review.

Quarter-on-quarter, local electricity generation increased by 20.0 percent (150,389), from 751, 514 MWh during the fourth quarter of 2025 to 901, 903 MWh during the period under review. This increase was primarily attributed to higher output from both Morupule A and B Power plants alongside increasing output from the solar plants. The record-breaking local generation in the first quarter of 2026 (901,903 units) confirms that solar infrastructure is now performing at scale, providing a stable alternative to diesel fueled power plants.

In the first quarter of 2026, the Morupule A and B power stations accounted for 90.8 percent (818, 873. 9 MWh) of total electricity generation, underscoring their pivotal role in Botswana's national energy supply (Table 2). The Orapa and Matshelagabedi emergency diesel power plants, contributed 0.1 percent (509.5 MWh), while solar power stations supplied 9.1 percent (82, 519.96 MWh), reflecting the country's growing commitment to renewable energy. The integration of solar plants in Bobonong, Phakalane, Shakawe, and Mmadinare further illustrates ongoing efforts to diversify energy sources and enhance sustainability within the electricity generation mix.

## 1.2 Imported Electricity

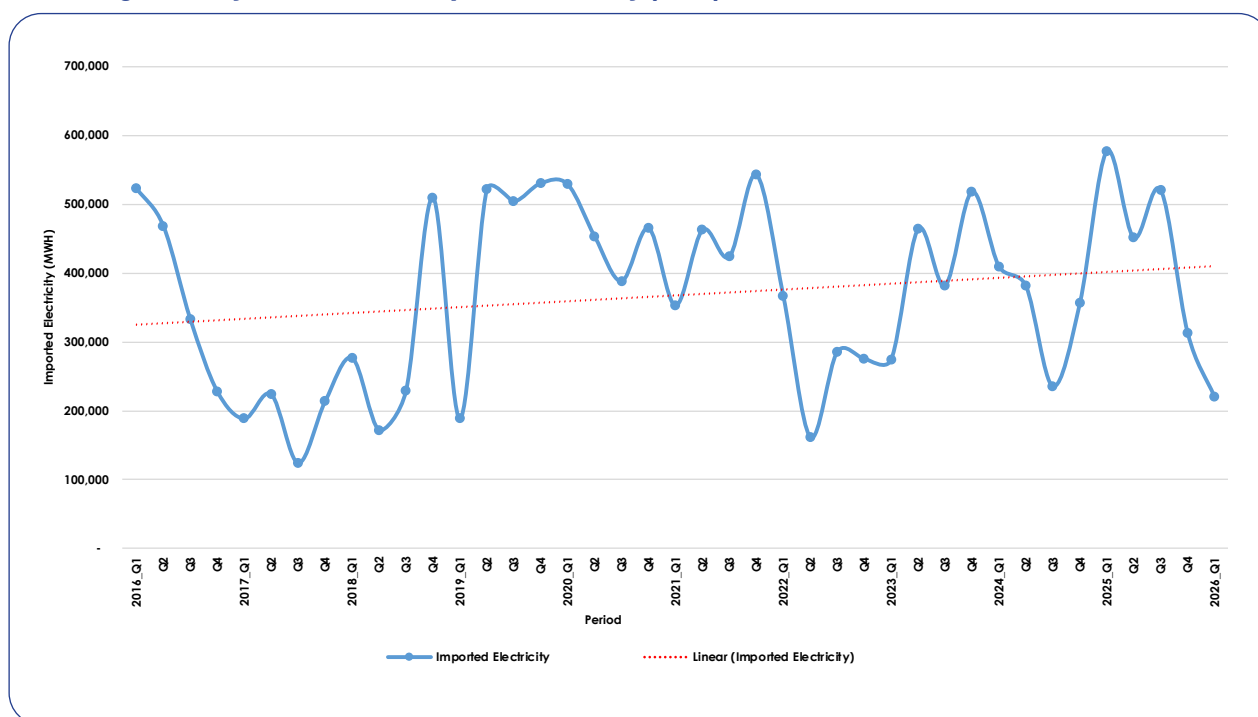
The discussions in this section are based on **Table 7** through **10** as well as **Figures 2** and **3**.

Electricity imports dropped significantly year-on-year, indicating reduced dependence on external energy sources despite quarterly shifts. During the first quarter of 2026, the physical volume of imported electricity decreased by 61.8 percent (357,161 MWh), from 577,466 MWh during the first quarter of 2025 to 220,305 MWh.

Imported electricity decreased by 29.8 percent (207,374 MWh) during the first quarter of 2026 (220,305 MWh) compared to the previous quarter, 313,629 MWh. The significant decline of imported electricity is directly attributable to the substantial increase in domestic electricity generation. In addition, the utilisation of solar for electricity generation has allowed the Botswana Power Corporation (BPC) to prioritize cheaper local renewable energy over variable-priced imports from the Southern African Power Pool (SAPP) and South Africa's Eskom.

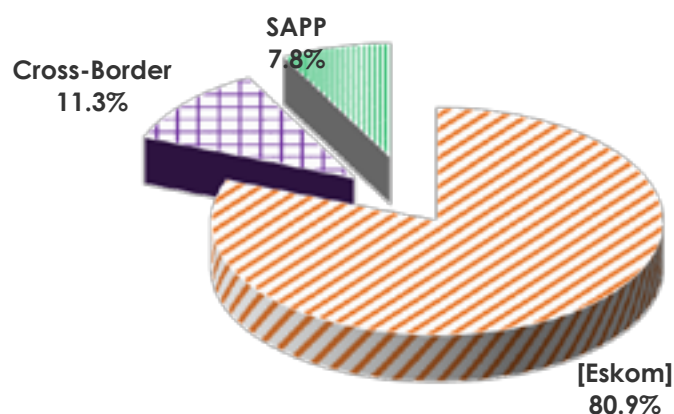
**Figure 2** depicts the trend in imported electricity volumes from the first quarter of 2016 to the first quarter of 2026. Despite fluctuations, the upward trend reflects ongoing reliance on imports to supplement domestic production.

**Figure 2: Physical Volume of Imported Electricity (MWh): 2016 First Quarter to 2026 First Quarter**



As illustrated in **Figure 3**, Eskom was the principal source of imported electricity, accounting for 80.9 percent (178,274.4 MWh) of total imports. The Cross-border electricity markets supplied 11.3 percent (24,842.6 MWh). The Southern African Power Pool accounted for a marginal 7.8 percent (17,188.0 MWh). Cross-border electricity markets refer to an arrangement whereby towns and villages situated along the national borders receive electricity directly from neighbouring countries such as Namibia and Zambia.

**Figure 3: Imported Electricity by Source: First Quarter 2026**



### 1.3 Distribution of Electricity

This section combines the local generation and imported electricity to come up with electricity that is available for distribution in Botswana. This does not take into account electricity used for auxiliary services, pumping, network losses as well as the production of electricity through incineration of waste. The computation of electricity distribution is guided by the International Recommendations for Industrial Statistics (IRIS) 2008. Discussions draw from Tables 11 through 14.

Table 11 shows the physical volume of electricity distributed from 2016 to the first quarter of 2026, while annual percentage changes and quarter-on-quarter percentage changes for the same period are presented in Table 12 and 13 respectively. These tables can also be used as guidance as to whether electricity distributed is improving over time.

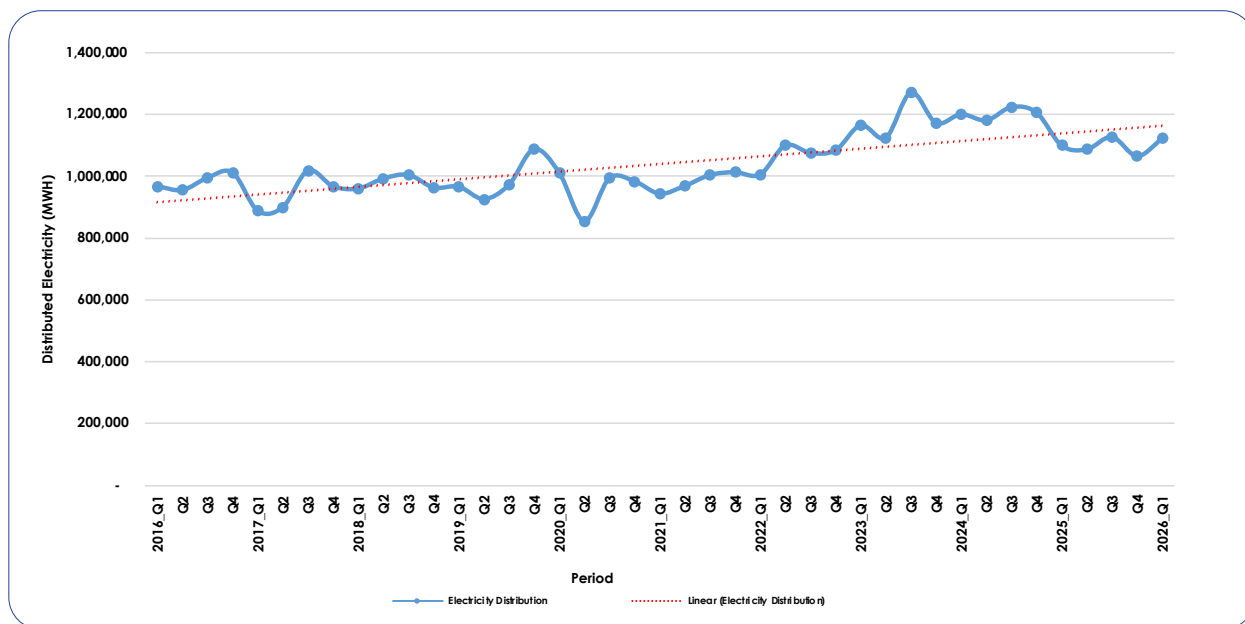
Electricity distribution in Q1 2026 totalled 1,122,208.3 MWh, compared to 1,099,497 MWh in Q1 2025, representing a year-on-year (YoY) increase of 2.1 percent. This indicates a modest improvement in electricity distributed during the first quarter relative to the same period last year.

Compared with Q4 2025 (1,065,144 MWh), electricity distribution in Q1 2026 increased by 5.4 percent on a quarter-on-quarter (QoQ) basis. This suggests a stronger performance at the beginning of 2026, reversing the lower distribution levels recorded in the preceding quarter.

At the monthly level, January 2026 distribution (363,512.44 MWh) was 2.8 percent below January 2025, while February 2026 (292,426.89 MWh) declined by 17.0 percent compared to February 2025. However, March 2026 recorded 413,856.98 MWh, an increase of 10.9 percent over March 2025, offsetting the weaker performance in the first two months and contributing to the overall quarterly growth.

Figure 4 shows that there has been a gradual increase of distributed electricity from the first quarter of 2014 to the fourth quarter of 2025, despite periodic fluctuations.

**Figure 4: Physical Volume of Distributed Electricity (MWh): 2016 First Quarter to 2026 First Quarter**



### 1.3.1 Contribution of Electricity Generation to Distribution

The percentage of electricity generated relative to electricity distributed is crucial for determining if local generation is gradually decreasing reliance on imported electricity. This information is displayed in **Table 14**.

It can be observed from **Table 14** that electricity generated locally recorded a strong improvement in **Q1 of 2026**, contributing 80.4 percent to electricity distributed.

## 2.0 Technical Notes

### 2.1 Background

The generation of electricity in Botswana started in 1985 with a coal fired thermal power station at Morupule operating at a capacity of 132 MWH. Prior to this period, most of Botswana's electricity was imported from South Africa's power utility, Eskom. In 2008 South Africa's electricity demand started to exceed its supply, resulting in the South African government restricting power exports. As a result, Botswana and the entire Southern African region experienced massive power shortages because of the reduced electricity imports from South Africa ([http://en.wikipedia.org/wiki/Energy\\_in\\_Botswana](http://en.wikipedia.org/wiki/Energy_in_Botswana)).

To avert the situation, Botswana Government opted for alternative ways of sourcing electricity for the country; hence the plan to increase local generation of electricity at Morupule Power Station. The Morupule Power A plant of capacity 132 MWH was augmented with the construction of Morupule Power B plant having production capacity of 600 MWH (BPC Annual Report, 2010).

### 2.2 Concepts and formula of the Index of Electricity Generation, Importation and Distribution

The Index of Electricity Generation is a Laspeyres index. The weighted average for electricity generation equals one because there are no various electricity products. The index is thus calculated using the formula;

$$I = \frac{\sum R_j * W_j}{\sum W_j}$$

Where;

- I is the index
- R is the electricity generation relative
- W is the weight

The electricity generation relative for the quarter has been calculated by using the formula:

$$R_i = \frac{P_{ic}}{P_{i0}} * 100$$

Where  $P_c$  is the electricity generation of the current quarter and  $P_o$  is the generation of electricity of the base year.

The calculation of the monthly generation indices is based on the volume of electricity units produced.

### 2.3 Base Year

The base year, also referred to as **reference period** used in this brief is 2013, which is set at 100. The selection of the reference period was informed by the availability of relevant data and synchronization of data with other sectors within the industry.



# Appendix

## Appendix 1

**Table 1: Selected Key Indicators for Electricity Generation: 2016 Q1 - 2026 Q1**

Period	Index of the Physical Volume of Electricity Generation	Year-on-Year Percentage Change	Quarter-on-Quarter Percentage Change
2016_Q1	105.5	(14.5)	(37.1)
Q2	115.7	(22.8)	9.6
Q3	157.3	11.7	36.0
Q4	186.3	11.0	18.4
2017_Q1	166.1	57.4	(10.8)
Q2	160.6	38.8	(3.4)
Q3	212.6	35.2	32.4
Q4	179.1	(3.9)	(15.8)
2018_Q1	162.3	(2.3)	(9.4)
Q2	195.0	21.4	20.1
Q3	184.3	13.3	(5.5)
Q4	107.7	(39.8)	(41.5)
2019_Q1	184.8	13.8	71.5
Q2	96.0	(50.8)	(48.0)
Q3	111.3	(39.6)	16.0
Q4	132.4	22.9	18.9
2020_Q1	114.7	(37.9)	(13.4)
Q2	95.1	(0.9)	(17.1)
Q3	143.8	29.2	51.2
Q4	123.1	(7.0)	(14.4)
2021_Q1	140.3	22.4	14.0
Q2	120.2	26.4	(14.3)
Q3	137.7	(4.2)	14.6
Q4	111.7	(9.3)	(18.9)
2022_Q1	151.9	8.2	36.0
Q2	223.0	85.5	46.8
Q3	187.8	36.3	(15.8)
Q4	192.2	72.1	2.4
2023_Q1	211.9	39.5	10.2
Q2	157.1	(29.6)	(25.9)
Q3	211.6	12.7	34.7
Q4	155.6	(19.0)	(26.4)
2024_Q1	188.2	(11.2)	20.9
Q2	190.2	21.1	1.0
Q3	235.1	11.1	23.6
Q4	202.2	29.9	(14.0)
2025_Q1	124.2	(34.0)	(38.6)
Q2	151.1	(20.6)	21.7
Q3	144.3	(38.6)	(4.5)
Q4	174.7	(11.6)	23.9
2026_Q1	214.5	72.8	20.0

Note: ( ) Denotes negative figures

**Table 2: Electricity Generation by Source in MWh: First Quarter 2026**

Source	MWh	%
Coal	818,873.9	90.8
Diesel	509.5	0.1
Solar	82,519.96	9.1
<b>Total</b>	<b>901,903.3</b>	<b>100.0</b>

**Table 3: Physical Volume of Electricity Generation (MWh): January 2016 – March 2026**

Period	2016	2017	2018	2019	2020	2021	2022	2023	2024	2025	2026*
January	206,381	245,598	209,333	272,140	148,376	199,148	184,143	367,804	266,405	221,339	284,177
February	127,975	216,264	227,955	235,908	187,925	186,121	211,054	259,631	260,028	144,013	292,427
March	109,272	236,589	245,092	268,605	145,683	204,630	243,304	263,219	264,834	156,679	325,299
April	112,765	195,703	210,965	163,206	102,898	118,600	288,019	207,830	231,730	181,671	
May	179,837	205,705	310,500	125,266	98,692	185,311	289,714	246,940	364,108	252,276	
June	193,586	273,639	298,291	115,104	198,314	201,403	359,864	205,579	203,684	201,247	
July	213,841	311,655	293,739	125,091	217,448	186,631	287,915	269,847	339,700	263,211	
August	219,402	315,552	289,885	152,822	199,437	196,681	215,433	306,626	346,905	188,432	
September	228,002	266,623	191,199	190,061	187,763	195,723	286,006	313,061	301,698	154,868	
October	299,945	234,090	73,018	195,637	158,411	189,669	283,971	246,071	375,327	279,868	
November	213,303	296,547	121,910	208,940	176,030	129,005	220,271	158,903	249,849	229,112	
December	269,893	222,240	258,009	151,998	183,186	150,676	303,701	249,337	224,670	242,534	
<b>Q1</b>	<b>443,628</b>	<b>698,451</b>	<b>682,380</b>	<b>776,653</b>	<b>481,984</b>	<b>589,899</b>	<b>638,501</b>	<b>890,655</b>	<b>791,267</b>	<b>522,031</b>	<b>901,903</b>
<b>Q2</b>	<b>486,188</b>	<b>675,047</b>	<b>819,755</b>	<b>403,576</b>	<b>399,903</b>	<b>505,313</b>	<b>937,597</b>	<b>660,349</b>	<b>799,523</b>	<b>635,194</b>	
<b>Q3</b>	<b>661,245</b>	<b>893,831</b>	<b>774,822</b>	<b>467,974</b>	<b>604,647</b>	<b>579,036</b>	<b>789,354</b>	<b>889,535</b>	<b>988,303</b>	<b>606,511</b>	
<b>Q4</b>	<b>783,141</b>	<b>752,877</b>	<b>452,938</b>	<b>556,576</b>	<b>517,627</b>	<b>469,349</b>	<b>807,943</b>	<b>654,312</b>	<b>849,846</b>	<b>751,514</b>	
<b>TOTAL</b>	<b>2,374,202</b>	<b>3,020,206</b>	<b>2,729,895</b>	<b>2,204,779</b>	<b>2,004,162</b>	<b>2,143,597</b>	<b>3,173,396</b>	<b>3,094,850</b>	<b>3,428,939</b>	<b>2,515,250</b>	<b>901,903</b>

Note:

1. 2026\* Data is up to the first quarter only

**Table 4: Indices of Physical Volume of Electricity Generation: January 2016 – March 2026**

Period	2016	2017	2018	2019	2020	2021	2022	2023	2024	2025	2026*
Jan	147.3	175.3	149.4	194.2	105.9	142.1	131.4	262.5	190.1	158.0	202.8
Feb	91.3	154.3	162.7	168.4	134.1	132.8	150.6	185.3	185.6	102.8	208.7
March	78.0	168.8	174.9	191.7	104.0	146.0	173.6	187.8	189.0	111.8	232.1
April	80.5	139.7	150.6	116.5	73.4	84.6	205.5	148.3	165.4	129.6	
May	128.3	146.8	221.6	89.4	70.4	132.2	206.8	176.2	259.8	180.0	
June	138.2	195.3	212.9	82.1	141.5	143.7	256.8	146.7	145.4	143.6	
July	152.6	222.4	209.6	89.3	155.2	133.2	205.5	192.6	242.4	187.8	
August	156.6	225.2	206.9	109.1	142.3	140.4	153.7	218.8	247.6	134.5	
September	162.7	190.3	136.4	135.6	134.0	139.7	204.1	223.4	215.3	110.5	
October	214.1	167.1	52.1	139.6	113.1	135.4	202.7	175.6	267.9	199.7	
November	152.2	211.6	87.0	149.1	125.6	92.1	157.2	113.4	178.3	163.5	
December	192.6	158.6	184.1	108.5	130.7	107.5	216.7	177.9	160.3	173.2	
<b>Q1</b>	<b>105.5</b>	<b>166.1</b>	<b>162.3</b>	<b>184.8</b>	<b>114.7</b>	<b>140.3</b>	<b>151.9</b>	<b>211.9</b>	<b>188.2</b>	<b>124.2</b>	<b>214.5</b>
<b>Q2</b>	<b>115.7</b>	<b>160.6</b>	<b>195.0</b>	<b>96.0</b>	<b>95.1</b>	<b>120.2</b>	<b>223.0</b>	<b>157.1</b>	<b>190.2</b>	<b>151.1</b>	
<b>Q3</b>	<b>157.3</b>	<b>212.6</b>	<b>184.3</b>	<b>111.3</b>	<b>143.8</b>	<b>137.7</b>	<b>187.8</b>	<b>211.6</b>	<b>235.1</b>	<b>144.3</b>	
<b>Q4</b>	<b>186.3</b>	<b>179.1</b>	<b>107.7</b>	<b>132.4</b>	<b>123.1</b>	<b>111.7</b>	<b>192.2</b>	<b>155.6</b>	<b>202.2</b>	<b>178.8</b>	
<b>TOTAL</b>	<b>141.2</b>	<b>179.6</b>	<b>162.3</b>	<b>131.1</b>	<b>119.2</b>	<b>111.7</b>	<b>188.7</b>	<b>184.1</b>	<b>203.9</b>	<b>149.6</b>	

Note:

1. 2026\* Data is up to the first quarter only

**Table 5: Annual Percentage Changes in the Indices of the Physical Volume of Electricity Generation: January 2016 – March 2026**

Period	2016	2017	2018	2019	2020	2021	2022	2023	2024	2025	2026
Jan	29.9	19.0	(14.8)	30.0	(45.5)	34.2	(7.5)	99.7	(27.6)	(16.9)	28.4
Feb	(29.1)	69.0	5.4	3.5	(20.3)	(1.0)	13.4	23.0	0.2	(44.6)	103.1
March	(39.1)	116.5	3.6	9.6	(45.8)	40.5	18.9	8.2	0.6	(40.8)	107.6
April	(42.3)	73.5	7.8	(22.6)	(37.0)	15.3	142.8	(27.8)	11.5	(21.6)	
May	(13.1)	14.4	50.9	(59.7)	(21.2)	87.8	56.3	(14.8)	47.4	(30.7)	
June	(14.9)	41.4	9.0	(61.4)	72.3	1.6	78.7	(42.9)	(0.9)	(1.2)	
July	(11.0)	45.7	(5.7)	(57.4)	73.8	(14.2)	54.3	(6.3)	25.9	(22.5)	
August	23.9	43.8	(8.1)	(47.3)	30.5	(1.4)	9.5	42.3	13.1	(45.7)	
September	30.6	16.9	(28.3)	(0.6)	(1.2)	4.2	46.1	9.5	(3.6)	(48.7)	
October	(0.7)	(22.0)	(68.8)	167.9	(19.0)	19.7	49.7	(13.3)	52.5	(25.4)	
November	(0.2)	39.0	(58.9)	71.4	(15.8)	(26.7)	70.7	(27.9)	57.2	(8.3)	
December	42.4	(17.7)	16.1	(41.1)	20.5	(17.7)	101.6	(17.9)	(9.9)	8.0	
Q1	(14.5)	57.4	(2.3)	13.8	(37.9)	22.4	8.2	39.5	(11.2)	(34.0)	72.8
Q2	(22.8)	38.8	21.4	(50.8)	(0.9)	26.4	85.5	(29.6)	21.1	(20.6)	
Q3	11.7	35.2	(13.3)	(39.6)	29.2	(4.2)	36.3	12.7	11.1	(38.6)	
Q4	11.1	(3.9)	(39.8)	22.9	(7.0)	(9.3)	72.1	(19.0)	29.9	(11.6)	
TOTAL	(2.9)	27.2	(9.6)	(19.2)	(9.1)	7.0	48.0	(2.5)	10.8	(22.6)	

Note:

- ( ) Denotes negative numbers
- 2026\* Data is up to the first quarter only

**Table 6: Quarter on Quarter Percentage Changes in the Physical Volume of Electricity Generation: 2016 Q1 - 2026 Q1**

Period	2016	2017	2018	2019	2020	2021	2022	2023	2024	2025	2026*
Q1	(37.1)	(10.8)	(09.4)	71.5	(13.4)	14.0	36.0	10.2	20.9	(38.6)	20.0
Q2	9.6	(03.4)	20.1	(48.0)	(17.1)	(14.3)	46.8	(25.9)	1.0	21.7	
Q3	36.0	32.4	(05.5)	16.0	51.2	14.6	(15.8)	34.7	23.6	(04.5)	
Q4	18.4	(15.8)	(41.5)	18.9	(14.4)	(18.9)	2.4	(26.4)	(14.0)	23.9	

Note:

- ( ) Denotes negative numbers
- 2026\* Data is up to the first quarter only

**Table 7: Physical Volume of Imported Electricity (MWh): January 2016 – March 2026**

Period	2016	2017	2018	2019	2020	2021	2022	2023	2024	2025	2026*
Jan	140,172.0	57,679.0	124,148.0	54,921.8	196,456.7	126,433.9	152,484.7	76,432.1	124,511.0	152,601.0	79,335.0
Feb	166,303.0	56,951.0	77,257.0	66,227.9	138,488.6	102,376.0	108,678.2	80,478.5	136,622.0	208,211.0	52,412.0
March	217,261.0	74,422.0	75,865.0	67,915.4	194,406.3	124,437.8	105,837.7	118,067.8	148,887.0	216,654.0	88,558.0
April	196,075.0	88,783.0	94,226.0	139,549.1	156,519.9	191,547.5	58,051.7	144,747.6	135,694.0	159,573.0	
May	138,677.0	92,379.0	39,052.0	188,759.6	174,404.3	140,355.3	64,953.5	133,729.0	73,046.0	115,372.0	
June	134,100.0	43,156.0	39,179.0	193,712.7	122,808.4	131,267.8	39,334.8	186,126.3	173,024.0	176,809.0	
July	110,932.0	34,746.0	55,772.4	196,021.3	123,767.7	141,797.5	77,504.4	190,170.4	85,150.0	120,214.0	
August	119,340.0	35,331.9	45,130.7	187,293.9	132,273.1	148,437.5	142,419.8	103,432.8	72,407.0	194,679.0	
September	103,083.0	54,533.9	128,523.9	120,800.1	132,863.9	134,467.8	66,246.6	88,823.0	78,518.0	206,110.0	
October	57,653.0	83,734.0	249,014.7	174,433.2	172,022.5	141,935.8	75,548.5	171,947.0	56,623.0	99,336.0	
November	116,517.0	36,094.0	200,024.5	159,650.3	146,901.4	216,497.2	119,504.0	207,469.0	141,422.0	117,097.0	
December	54,373.0	94,307.0	61,258.4	196,952.7	146,777.2	184,983.7	81,204.6	139,253.0	158,636.0	97,197.0	
Q1	523,736.0	189,052.0	277,270.0	189,065.1	529,351.6	353,247.6	367,000.6	274,978.4	410,020.0	577,466.0	220,305.0
Q2	468,852.0	224,318.0	172,457.0	522,021.5	453,732.6	463,170.7	162,339.9	464,602.9	381,764.0	451,754.0	
Q3	333,355.0	124,611.9	229,427.0	504,115.3	388,904.7	424,702.8	286,170.8	382,426.2	236,075.0	521,003.0	
Q4	228,543.0	214,135.0	510,297.6	531,036.3	465,701.1	543,416.8	276,257.2	518,669.0	356,682.0	313,630.0	
TOTAL	1,554,486.0	752,116.9	1,189,451.6	1,746,238.2	1,837,689.9	1,784,537.8	1,091,768.4	1,640,676.5	1,384,541.0	1,863,853.0	

Note:

- 2026\* Data is up to the first quarter only

**Table 8: Annual Percentage Changes in the Physical Volume of Imported Electricity: January 2016 – March 2026**

Period	2016	2017	2018	2019	2020	2021	2022	2023	2024	2025	2026*
Jan	(24.1)	(58.9)	115.2	(55.8)	257.7	(35.6)	20.6	(49.9)	62.9	22.6	(48.0)
Feb	46.6	(65.8)	35.7	(14.3)	109.1	(26.1)	6.2	(25.9)	69.8	52.4	(74.8)
March	41.9	(65.7)	1.9	(10.5)	186.2	(36.0)	(14.9)	11.6	26.1	45.5	(59.1)
April	51.3	(54.7)	6.1	48.1	12.2	22.4	(69.7)	149.3	(6.3)	17.6	
May	7.1	(33.4)	(57.7)	383.4	(7.6)	(19.5)	(53.7)	105.9	(45.4)	57.9	
June	14.5	(67.8)	(9.2)	394.4	(36.6)	6.9	(70.0)	373.2	(7.0)	2.2	
July	11.3	(68.7)	60.5	251.5	(36.9)	14.6	(45.3)	145.4	(55.2)	41.2	
August	(10.0)	(70.4)	27.7	315.0	(29.4)	12.2	(4.1)	(27.4)	(30.0)	168.9	
September	(22.0)	(47.1)	135.7	(6.0)	10.0	1.2	(50.7)	34.1	(11.6)	162.5	
October	(3.1)	45.2	197.4	(30.0)	(1.4)	(17.5)	(46.8)	127.6	(67.1)	75.4	
November	0.7	(69.0)	454.2	(20.2)	(8.0)	47.4	(44.8)	73.6	(31.8)	(17.2)	
December	(66.2)	73.4	(35.0)	221.5	(25.5)	26.0	(56.1)	71.5	13.9	(38.7)	
<b>Q1</b>	16.1	(63.9)	46.7	(31.8)	180.0	(33.3)	3.9	(25.1)	49.1	40.8	(61.8)
<b>Q2</b>	24.6	(52.2)	(23.1)	202.7	(13.1)	2.1	(65.0)	186.2	(17.8)	18.3	
<b>Q3</b>	(8.5)	(62.6)	84.1	119.7	(22.9)	9.2	(32.6)	33.6	(38.3)	120.7	
<b>Q4</b>	(32.0)	(6.3)	138.3	4.1	(12.3)	16.7	(49.2)	87.7	(31.2)	(12.1)	
<b>TOTAL</b>	<b>1.8</b>	<b>(51.6)</b>	<b>58.1</b>	<b>46.8</b>	<b>5.2</b>	<b>(2.9)</b>	<b>(38.8)</b>	<b>50.3</b>	<b>(15.6)</b>	<b>34.6</b>	

Note:

1. ( ) Denotes negative numbers
2. 2026\* Data is up to the first quarter only

**Table 9: Quarter on Quarter Percentage Changes in the Physical Volume of Imported Electricity: 2016 Q1 - 2026 Q1**

Period	2016	2017	2018	2019	2020	2021	2022	2023	2024	2025	2026*
Q1	55.9	(17.3)	29.5	(63.0)	(0.3)	(24.1)	(32.5)	(0.5)	(20.9)	61.9	(29.8)
Q2	(10.5)	18.7	(37.8)	176.1	(14.3)	31.1	(55.8)	69.0	6.9	(21.8)	
Q3	(28.9)	(44.4)	33.0	(3.4)	(14.3)	(8.3)	76.3	(17.7)	38.2	15.3	
Q4	(31.4)	71.8	122.4	5.3	19.7	28.0	3.5	35.6	51.1	(39.8)	

1. ( ) Denotes negative numbers
2. 2026\* Data is up to the first quarter only

**Table 10: Imported Electricity by Source in MWH: Fourth Quarter 2025**

Source	MWH	%
Eskom (SA)	178,274.4	80.9
SAPP Markets (SADC)	17,188.0	7.8
Cross Boarder	24,842.6	11.3
<b>Total</b>	<b>220,305.1</b>	<b>100.0</b>

**Table 11: Physical Volume of Electricity Distribution (MWH): January 2016 - March 2026**

Period	2016	2017	2018	2019	2020	2021	2022	2023	2024	2025	2026*
January	346,553	303,277	333,481	327,062	344,833	325,582	336,627	444,236	390,916	373,940	363,512
February	294,278	273,215	305,212	302,136	326,413	288,497	319,732	340,110	396,650	352,225	292,427
March	326,533	311,011	320,957	336,520	340,090	329,067	349,142	381,287	413,721	373,332	413,857
April	308,840	284,486	305,191	302,755	259,418	310,147	346,070	352,578	367,425	341,244	
May	318,514	298,084	349,552	314,026	273,096	325,666	354,668	380,669	437,155	367,649	
June	327,686	316,795	337,470	308,817	321,122	332,671	399,199	391,705	376,708	378,056	
July	324,773	346,401	349,511	321,112	341,216	328,429	365,420	460,018	424,850	383,425	
August	338,742	350,884	335,016	340,116	331,710	345,119	357,853	410,059	419,312	383,110	
September	331,085	321,157	319,722	310,861	320,627	330,191	352,252	401,884	380,216	360,978	
October	357,598	317,824	322,033	370,071	330,434	331,605	359,520	418,018	431,951	379,204	
November	329,820	332,641	321,935	368,591	322,931	345,502	339,775	366,373	391,270	346,209	
December	324,266	316,547	319,267	348,951	329,963	335,659	384,906	388,590	383,306	339,731	
<b>Q1</b>	<b>967,364</b>	<b>887,503</b>	<b>959,650</b>	<b>965,718</b>	<b>1,011,335</b>	<b>943,147</b>	<b>1,005,502</b>	<b>1,165,633</b>	<b>1,201,287</b>	<b>1,099,497</b>	<b>1,122,208</b>
<b>Q2</b>	<b>955,040</b>	<b>899,365</b>	<b>992,212</b>	<b>925,597</b>	<b>853,636</b>	<b>968,484</b>	<b>1,099,937</b>	<b>1,124,952</b>	<b>1,181,287</b>	<b>1,086,949</b>	
<b>Q3</b>	<b>994,600</b>	<b>1,018,442</b>	<b>1,004,249</b>	<b>972,090</b>	<b>993,552</b>	<b>1,003,738</b>	<b>1,075,525</b>	<b>1,271,961</b>	<b>1,224,378</b>	<b>1,127,513</b>	
<b>Q4</b>	<b>1,011,684</b>	<b>967,012</b>	<b>963,235</b>	<b>1,087,612</b>	<b>983,328</b>	<b>1,012,766</b>	<b>1,084,200</b>	<b>1,172,981</b>	<b>1,206,527</b>	<b>1,065,144</b>	
<b>Year</b>	<b>3,928,688</b>	<b>3,772,322</b>	<b>3,919,347</b>	<b>3,951,017</b>	<b>3,841,852</b>	<b>3,928,135</b>	<b>4,265,164</b>	<b>4,735,526</b>	<b>4,813,479</b>	<b>4,379,103</b>	<b>1,122,208.31</b>

Note:

1. 2026\* Data is up to the first quarter only

**Table 12: Table 12: Annual Percentage Changes for the Physical Volume of Electricity Distribution: January 2016 - March 2026**

Period	2016	2017	2018	2019	2020	2021	2022	2023	2024	2025	2026*
Jan	0.9	(12.5)	10.0	(1.9)	5.4	(5.6)	3.4	32.0	(12.0)	(4.3)	(2.8)
Feb	0.1	(7.2)	11.7	(1.0)	8.0	(11.6)	10.8	6.4	16.6	(11.2)	(17.0)
Mar	(1.8)	(4.8)	3.2	4.8	1.1	(3.2)	6.1	9.2	8.5	(9.8)	10.9
Apr	(5.0)	(7.9)	7.3	(0.8)	(14.3)	19.6	11.6	1.9	4.2	(7.1)	
May	(5.3)	(6.4)	17.3	(10.2)	(13.0)	19.2	8.9	7.3	14.8	(15.9)	
Jun	(4.9)	(3.3)	6.5	(8.5)	4.0	3.6	20.0	(1.9)	(3.8)	0.4	
Jul	(4.5)	6.7	0.9	(8.1)	6.3	(3.7)	11.3	25.9	(7.6)	(9.8)	
Aug	9.4	3.6	(4.5)	1.5	(2.5)	4.0	3.7	14.6	2.3	(8.6)	
Sep	7.9	(3.0)	(0.4)	(2.8)	3.1	3.0	6.7	14.1	(5.4)	(5.1)	
Oct	(1.1)	(11.1)	1.3	14.9	(10.7)	0.4	8.4	16.3	3.3	(12.2)	
Nov	0.1	0.9	(3.2)	14.5	(12.4)	7.0	(1.7)	7.8	6.8	(11.5)	
Dec	(7.4)	(2.4)	0.9	9.3	(5.4)	1.7	14.7	1.0	(1.4)	(11.4)	
<b>Q1</b>	<b>(0.3)</b>	<b>(8.3)</b>	<b>8.1</b>	<b>0.6</b>	<b>4.7</b>	<b>(6.7)</b>	<b>6.6</b>	<b>15.9</b>	<b>3.1</b>	<b>(8.5)</b>	<b>2.1</b>
<b>Q2</b>	<b>(5.1)</b>	<b>(5.8)</b>	<b>10.3</b>	<b>(6.7)</b>	<b>(7.8)</b>	<b>13.5</b>	<b>13.6</b>	<b>2.3</b>	<b>5.0</b>	<b>(8.0)</b>	
<b>Q3</b>	<b>4.0</b>	<b>2.4</b>	<b>(1.4)</b>	<b>(3.2)</b>	<b>2.2</b>	<b>1.0</b>	<b>7.2</b>	<b>18.3</b>	<b>(3.7)</b>	<b>(7.9)</b>	
<b>Q4</b>	<b>(2.8)</b>	<b>(4.4)</b>	<b>(0.4)</b>	<b>12.9</b>	<b>(9.6)</b>	<b>3.0</b>	<b>7.1</b>	<b>8.2</b>	<b>2.9</b>	<b>(11.7)</b>	
<b>Year</b>	<b>(1.1)</b>	<b>(4.0)</b>	<b>3.9</b>	<b>0.8</b>	<b>(2.8)</b>	<b>2.2</b>	<b>8.6</b>	<b>11.0</b>	<b>1.6</b>	<b>(9.0)</b>	

Note:

1. ( ) Denotes negative numbers

2. 2026\* Data is up to the first quarter only

**Table 13: Quarter on Quarter Percentage Changes in the Physical Volume of Electricity Distribution: 2016 Q1 - 2026 Q1**

Period	2016	2017	2018	2019	2020	2021	2022	2023	2024	2025	2026*
Q1	(7.1)	(12.3)	(0.8)	0.3	(7.0)	(4.1)	(0.7)	7.5	2.4	(8.9)	5.4
Q2	(1.3)	1.3	3.4	(4.2)	(15.6)	2.7	9.4	(3.5)	(1.7)	(1.1)	
Q3	4.1	13.2	1.2	5.0	16.4	3.6	(2.2)	13.1	3.6	3.7	
Q4	1.7	(5.0)	(4.1)	11.9	(1.0)	0.9	0.8	(7.8)	(1.5)	(5.5)	

Note:

1. ( ) Denotes negative numbers

2. 2026\* Data is up to the third quarter only

**Table 14: Generation of Electricity (MWH) as a Percentage of Distribution: 2014 Q1 - 2026 Q1**

Year\ Utility	Electricity Generation	Imported Electricity	Electricity Distribution	% Contribution of Generated Electricity to Distributed
2016_Q1	443,628	523,736	967,364	45.9
Q2	486,188	468,852	955,040	50.9
Q3	661,245	333,355	994,600	66.5
Q4	783,141	228,543	1,011,684	77.4
2017_Q1	698,451	189,052	887,503	78.7
Q2	675,047	224,318	899,365	75.1
Q3	893,831	124,612	1,018,442	87.8
Q4	752,877	214,135	967,012	77.9
2018_Q1	682,380	277,270	959,650	71.1
Q2	819,755	172,457	992,212	82.6
Q3	774,882	229,427	1,004,249	77.2
Q4	452,938	229,427	963,235	47.0
2019_Q1	776,653	189,065	965,718	80.4
Q2	403,576	522,021	925,597	43.6
Q3	467,974	504,115	972,090	48.1
Q4	556,576	531,036	1,087,612	51.2
2020_Q1	481,984	529,352	1,011,335	47.7
Q2	399,903	453,733	853,636	46.8
Q3	604,647	388,905	993,552	60.9
Q4	517,627	465,701	983,328	52.6
2021_Q1	589,899	353,248	943,147	62.5
Q2	505,313	463,171	968,484	52.2
Q3	579,036	424,703	1,003,738	57.7
Q4	469,349	543,417	1,012,766	46.3
2022_Q1	638,501	367,001	1,005,502	63.5
Q2	937,597	162,340	1,099,937	85.2
Q3	789,354	286,171	1,075,525	73.4
Q4	807,943	276,257	1,084,200	74.5
2023_Q1	890,655	274,978	1,165,633	76.4
Q2	660,349	464,603	1,124,952	58.7
Q3	889,535	382,426	1,271,961	69.9
Q4	654,312	518,669	1,172,981	55.8
2024_Q1	791,267	410,020	1,201,287	65.9
Q2	799,523	381,764	1,181,287	67.7
Q3	988,303	236,075	1,224,378	80.7
Q4	849,846	356,682	1,206,527	70.4
2025_Q1	522,031	577,466	1,099,497	47.5
Q2	635,194	451,754	1,086,949	58.4
Q3	606,511	521,003	1,127,513	53.8
Q4	751,514	313,630	1,065,144	70.6
2026_Q1	901,903	220,305	1,122,208	80.4

Private Bag 47  
Maun  
**Tel:** 371 5716 **Fax:** 686 4327

Private Bag F193  
Francistown  
**Tel:** 241 5848

Private Bag 0024, Gaborone.  
**Tel:** 3671300 **Fax:** **Toll Free:** 0800 600 200

**E-mail:** [info@statsbots.org.bw](mailto:info@statsbots.org.bw)  
**Website:** <http://www.statsbots.org.bw>



**STATISTICS BOTSWANA**