



CONSUMER PRICE INDEX

JUNE 2023

Copyright 2023 © Statistics Botswana

Contact Statistician:

Rejoyce L Mbalekelwa

Tel: 3671300/3671319

Private Bag 0024, Gaborone

Tel: 3671300

Fax: 3952201

Toll Free: 0800 600 200

E-mail: info@statsbots.org.bw

Website: <http://www.statsbots.org.bw>



STATISTICS BOTSWANA

Preface

This report examines Botswana's monthly inflation rate performance as measured by the Consumer Price Index (CPI). The inflation rate measures the change in the CPI for the month of June 2023 compared to the previous month (month-on-month changes) as well as to the corresponding month in the previous year (year-on-year changes).

Price Statistics information is appropriate for the formulation of socio-economic and monetary policies. In order to produce statistics that reflect the current situation in the economy, Statistics Botswana produces the Consumer Price Index monthly, to meet the expectations of the stakeholders.

The annual inflation rate stood at 4.6 percent in June 2023, a drop of 1.1 percentage points compared to the May rate of 5.7 percent.

Statistics Botswana acknowledges and extends gratitude to all stakeholders who provided information for the production of this publication.

For more information and further enquiries, contact the Directorate of Stakeholder Relations at +267 367 1300. This publication and all other Statistics Botswana outputs/publications are available on the website at <http://www.statsbots.org.bw> and at the Statistics Botswana Information Resource Centre (Head-Office, Gaborone).



Dr. Lucky Mokgatlhe
Acting Statistician General
14th July 2023

Contents

Preface.....	i
Section 1: HEADLINE INFLATION.....	1
Section 2: CORE INFLATION.....	2
Glossary.....	13

Charts

Chart 1: NATIONAL RATE OF INFLATION	2
Chart 2: MONTHLY CHANGES IN THE CONSUMER PRICE INDEX.....	2
Chart 3: NON-TRADEABLES INFLATION RATE.....	2
Chart 4: TRADEABLES INFLATION RATE.....	2
Chart 5: CONTRIBUTION OF GROUPS TO ANNUAL INFLATION RATE.....	3

Tables

Table 1: CONTRIBUTION OF GROUPS TO ANNUAL INFLATION RATE.....	4
Table 2: CONSUMER PRICE INDEX (DECEMBER 2018 =100.0).....	5
Table 3: NATIONAL CONSUMER PRICE GROUP & SECTION INDICES (DECEMBER 2018 = 100.0).....	7
Table 4: CONSUMER PRICE INDEX BY TRADEABILITY (DECEMBER 2018 = 100.0).....	9
Table 5: CORE INFLATION RATES BY EXCLUSION AND TRIMMED MEAN.....	10
Table 6: AVERAGE ANNUAL INFLATION (DECEMBER 2018 = 100.0).....	11

Consumer Price Index

Section 1: Headline Inflation

The annual inflation rate was 4.6 percent in June 2023, compared to 5.7 percent in May 2023, registering a drop of 1.1 percentage points. The main drivers to the annual inflation rate in June 2023 were the following groups; Food & Non-Alcoholic Beverages (1.7 percent) and Miscellaneous Goods & Services (0.8 percent). [Refer to Table 1 and Chart 5.](#)

The inflation rates for regions when comparing the months of May and June 2023 showed a decrease of 1.3 percentage points for Rural Villages', from 6.1 percent in May to 4.8 percent in June. The Cities & Towns' inflation rate was 4.4 percent in June 2023, registering a decrease of 1.2 percentage points from the May rate of 5.6 percent, while the Urban Villages' inflation rate recorded a drop of 1.0 percentage point, from 5.6 percent in May to 4.6 percent in June. [Refer to Table 2](#)

The national Consumer Price Index realised a rise of 0.2 percent, from 130.2 in May 2023 to 130.5 in June 2023. The Urban Villages index was 130.9 in June 2023, recording a growth of 0.3 percent from 130.5 in May. The Cities & Towns index registered an increase of 0.2 percent from 130.2 to 130.5, during the period under review, whilst the Rural Villages index rose by 0.2 percent from 129.7 to 130.0. [Refer to Table 2.](#)

The group indices were generally moving at a stable pace between May and June 2023, recording changes of less than 1.0 percent. [Refer to Table 2.](#)

The Restaurants & Hotels group index registered a growth of 0.6 percent, from 120.1 in May to 120.9 in June 2023. The rise was due to the general increase in the constituent section indices of Restaurants, Cafes & the Like (0.7 percent) and Accommodation services (0.3 percent). [Refer to Table 3](#)

The Food & Non-Alcoholic Beverages group index rose by 0.5 percent, from 139.0 in May to 139.7 in June 2023. The rise in the Food group index was attributed to the general increase in the constituent section indices except for Oils & Fats which registered a drop of 1.6 percent. [Refer to Table 3.](#)

The Clothing & Footweargroup index registered an Increase of 0.5 percent, from 116.8 in May to 117.4 in June 2023. The growth was due to the general increase in the constituent section indices, Notably; Cleaning, Repair & Hire (0.9 percent) and Clothing (0.6 percent) [Refer to Table 3](#)

The All-Tradeables index recorded an increase of 0.3 percent in June 2023, from 136.2 in May 2023 to 136.5. The Domestic Tradeables Index moved from 134.1 in May to 134.6 in June 2023, registering an increase of 0.4 percent. The Imported Tradeables Index realised a growth of 0.2 percent over the two periods, from 136.9 in May to 137.2 in June 2023. The Non-Tradeables Index also went up by 0.2 percent, from 122.1 in May to 122.4 in June 2023. [Refer to Table 4.](#)

The All-Tradeables inflation rate was 5.5 percent in June 2023, registering a drop of 1.0 percentage point from the May 2023 rate of 6.5 percent. The Domestic Tradeables inflation rate registered a drop of 2.5 percentage points, from 12.5 percent in May to 10.0 percent in June 2023. The Non-Tradeables inflation rate was 3.1 percent in June, a decrease of 1.5 percentage points, from the May rate of 4.6 percent. The Imported Tradeables inflation rate went down by 0.5 of a percentage point from 4.5 percent in May to 4.0 percent in June 2023. [Refer to Table 4.](#)

Section 2: Core Inflation

The Trimmed Mean Core inflation rate went down by 1.1 percentage points, from 5.4 percent in May 2023 to 4.3 percent in June 2023. The Core Inflation rate (excluding administered prices) was 7.1 percent in June 2023, a decrease of 0.6 of a percentage point from the May 2023 rate of 7.7 percent. [Refer to Table 5.](#)

Charts

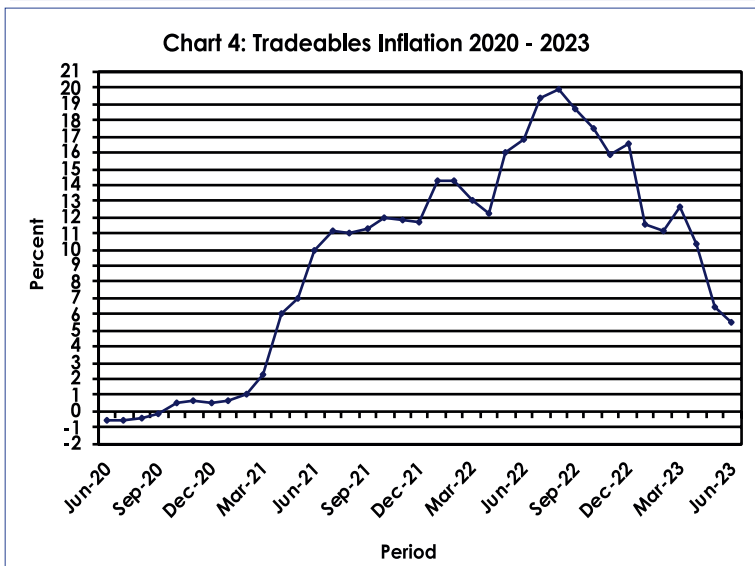
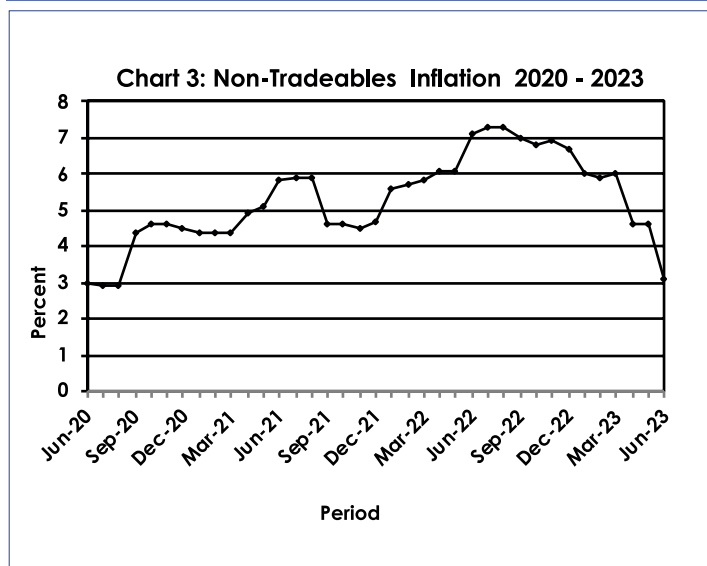
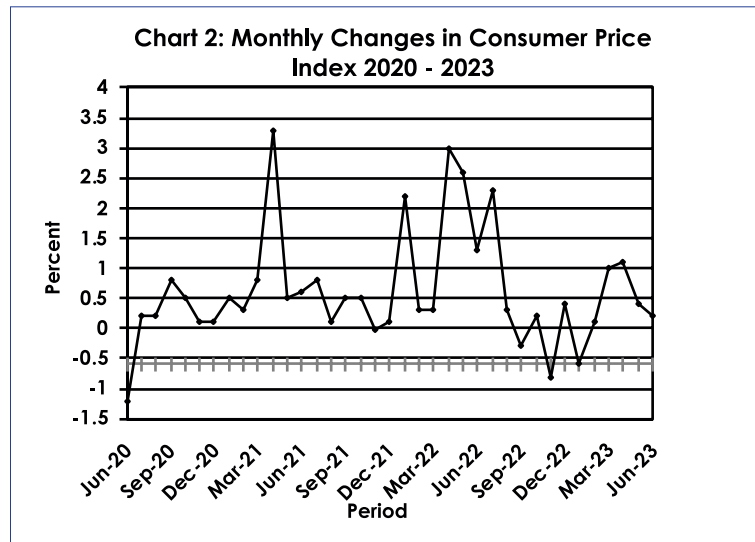
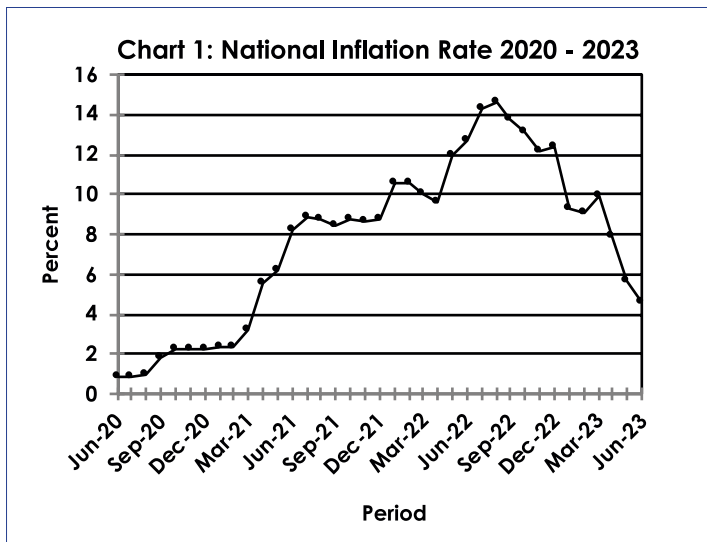
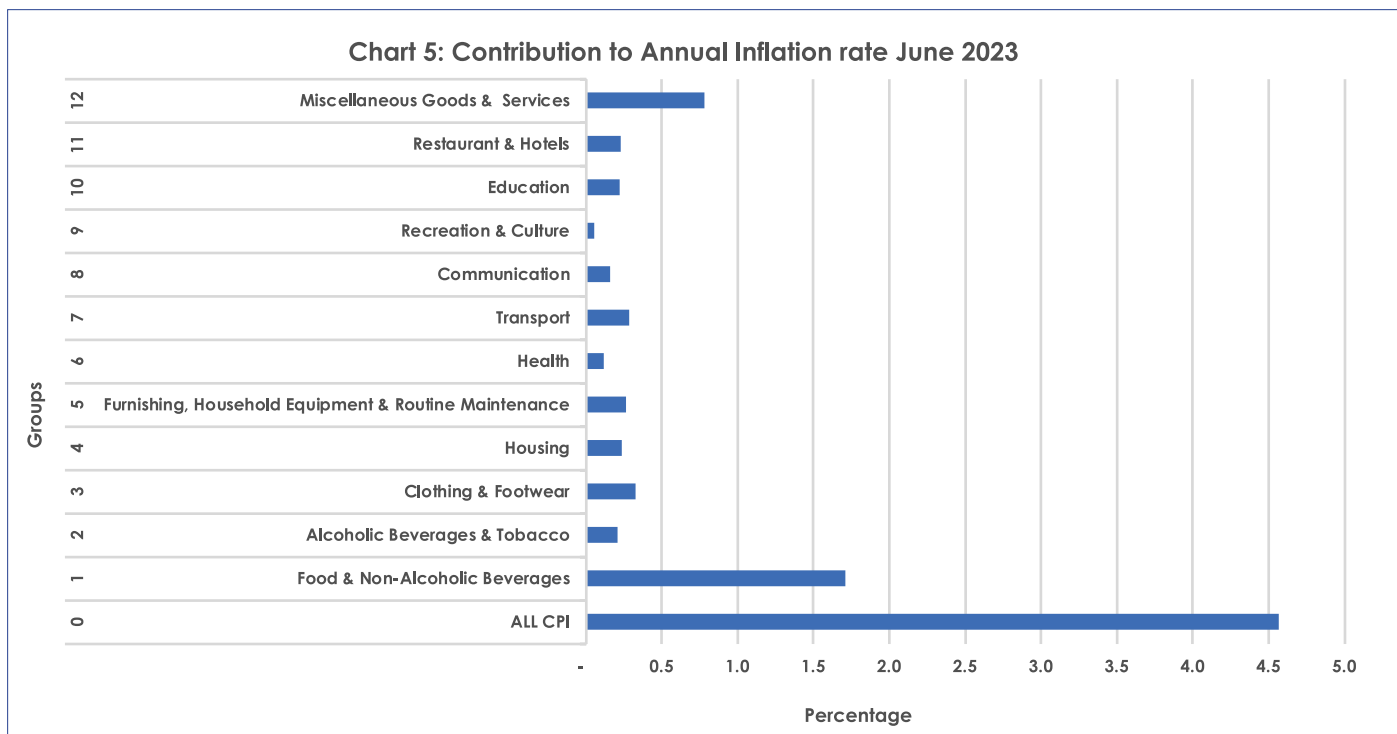


Chart 5: Contribution to Annual Inflation rate June 2023



Tables

Table 1: Contribution of Groups to Annual Inflation Rate

Group Code	Group Name	CONTRIBUTION		
		Apr-23	May-23	Jun-23
0	All Items Inflation Rate	7.9	5.7	4.6
1	Food & Non-Alcoholic Beverages	2.2	1.9	1.7
2	Alcoholic Beverages & Tobacco	0.2	0.2	0.2
3	Clothing & Footwear	0.4	0.3	0.3
4	Housing, Water, Electricity, Gas & Other Fuels	0.3	0.2	0.2
5	Furnishing, Household Equipment & Routine Maintenance	0.3	0.3	0.3
6	Health	0.1	0.1	0.1
7	Transport	2.7	1.0	0.3
8	Communication	0.2	0.2	0.2
9	Recreation & Culture	0.1	0.1	0.1
10	Education	0.2	0.2	0.2
11	Restaurants & Hotels	0.2	0.2	0.2
12	Miscellaneous Goods & Services	0.9	0.9	0.8

Note: Figures may vary slightly due to the rounding off

TABLE 2 : Consumer Price Index (December 2018 =100.0)

		Food	Alcohol and Tobacco	Clothing and Footwear	Housing	Furniture etc	Health	Transport	Communi-cation	Rec. & Culture	Education	Rest. & Hotels	Miscella-neous
Weights		13.55	4.34	5.95	17.45	4.85	3.38	23.43	6.94	2.82	4.60	3.66	9.01
2020	Jan	103.7	104.5	101.7	101.6	103.0	101.0	101.3	100.4	99.8	107.9	103.7	105.5
	Feb	104.2	104.6	101.8	101.7	103.3	101.0	101.4	100.3	100.0	108.0	103.9	105.6
	Mar	104.4	104.7	102.0	101.9	103.5	101.1	101.3	100.3	100.0	108.0	104.2	105.4
	Apr	104.6	104.8	102.1	106.5	103.7	101.5	101.3	100.3	99.7	108.0	104.4	106.1
	May	105.2	104.8	102.4	106.6	103.7	101.7	100.7	100.4	99.5	108.0	104.7	106.2
	Jun	105.7	108.7	102.9	106.7	103.9	102.0	93.9	100.5	99.5	108.0	104.8	106.2
	Jul	106.1	110.3	103.2	106.9	103.7	102.0	93.9	100.6	99.6	108.0	104.8	105.9
	Aug	106.5	110.4	103.3	107.2	104.0	102.1	94.0	100.8	99.8	108.0	104.8	105.8
	Sept	106.7	110.2	103.5	107.7	104.1	102.2	97.0	100.8	100.2	108.0	105.1	106.0
	Oct	106.7	111.0	103.9	107.9	104.4	102.2	98.4	101.3	100.2	108.0	105.3	106.2
	Nov	106.9	111.0	103.9	108.2	104.5	102.3	98.6	101.3	100.5	108.0	105.5	106.3
	Dec	106.7	111.3	104.1	108.5	104.7	102.4	98.7	101.1	100.7	108.0	105.3	106.4
2021	Jan	107.2	111.3	104.4	108.7	105.1	103.2	99.6	101.1	101.1	109.9	105.2	106.8
	Feb	108.0	111.5	104.6	109.0	105.2	103.2	100.0	101.1	101.6	109.9	105.5	106.9
	Mar	108.6	112.0	104.9	109.2	105.6	103.5	102.8	101.1	101.8	109.9	106.0	106.9
	Apr	111.7	117.1	105.7	113.3	106.9	104.3	108.8	101.8	103.1	109.9	107.0	112.2
	May	112.3	118.4	106.4	113.6	107.2	104.9	109.7	102.1	103.7	109.9	107.9	112.5
	Jun	112.9	118.8	106.8	115.8	107.8	104.9	110.2	102.2	104.0	110.0	108.5	112.6
	Jul	113.0	119.3	106.9	115.9	108.2	104.8	113.5	102.3	104.0	110.0	108.2	112.9
	Aug	113.2	119.5	107.0	116.0	108.4	104.9	113.4	102.3	104.1	110.0	108.7	113.2
	Sept	113.5	120.1	107.4	116.6	109.3	105.0	114.0	102.3	104.6	111.1	109.1	113.8
	Oct	114.0	120.8	107.8	116.7	109.6	105.2	117.5	102.3	104.6	111.1	109.6	114.1
	Nov	114.1	121.3	108.1	116.9	109.5	105.3	117.1	102.3	104.7	111.1	109.9	113.7
	Dec	114.4	121.7	108.3	117.5	110.0	105.4	116.8	102.2	104.9	111.1	110.0	114.1
2022	Jan	114.8	122.1	108.6	117.5	110.6	105.8	126.2	102.3	105.2	112.3	110.4	115.0
	Feb	115.3	122.2	108.7	117.6	110.9	106.0	127.0	102.3	105.4	112.4	110.7	115.4
	Mar	116.0	122.5	109.0	118.0	110.8	106.2	127.2	102.5	105.7	112.5	110.8	115.6
	Apr	118.6	123.2	109.4	122.3	111.6	106.6	134.5	102.5	107.4	112.6	111.5	121.2
	May	121.6	124.0	110.4	122.7	112.7	107.0	144.2	102.6	108.2	112.7	112.9	121.7
	Jun	123.8	124.3	111.2	123.1	113.5	107.3	148.7	102.6	108.4	112.8	113.4	123.0
	Jul	126.4	124.4	111.6	123.5	114.3	107.7	158.1	102.8	108.9	112.8	114.5	123.9
	Aug	128.2	124.4	111.7	123.0	114.6	107.9	158.5	103.9	109.2	112.8	114.9	124.3
	Sept	130.3	124.3	112.5	123.1	115.5	108.0	155.3	104.0	109.1	112.8	115.1	124.5
	Oct	132.0	124.6	113.1	123.0	115.9	108.4	155.4	104.0	109.3	112.8	115.4	124.4
	Nov	132.7	125.0	113.7	122.9	116.3	108.7	150.0	104.8	108.9	112.8	116.3	124.3
	Dec	133.8	124.8	114.0	123.0	116.9	109.1	151.0	104.8	108.8	112.8	116.4	124.8
2023	Jan	134.5	125.1	114.4	123.0	117.5	109.4	145.6	105.0	108.9	118.5	117.1	125.0
	Feb	135.3	125.6	114.8	123.0	118.0	109.5	145.1	105.0	108.9	118.5	117.4	125.3
	Mar	136.6	126.5	115.8	123.3	118.9	109.7	148.9	105.1	108.9	118.5	117.8	125.5
	Apr	138.2	128.7	116.4	124.3	119.8	110.5	149.5	105.1	110.2	118.5	118.9	132.5
	May	139.0	129.8	116.8	124.4	120.1	111.1	150.4	105.2	110.4	118.5	120.1	133.4
	Jun	139.7	130.2	117.4	124.7	119.9	111.1	150.6	105.2	110.5	118.5	120.9	133.7
% Change on Last month		0.5	0.3	0.5	0.3	(0.2)	0.1	0.2	0.0	0.0	0.0	0.6	0.2

Note: Figures may vary slightly due to the rounding off

TABLE 2: Consumer Price Index (Cont.)

		All Items Index	National Inflation Rate	Monthly Change	Towns & Cities Index	Urban Village Index	Rural Villages Index	Annual Inflation		
								Towns & Cities	Urban Villages	Rural
								%	%	%
2020		100.0	%	%	0.38	0.41	0.21	%	%	%
	Jan	102.6	2.2	0.4	102.8	102.6	102.0	2.4	2.3	1.8
	Feb	102.7	2.2	0.1	102.9	102.8	102.1	2.3	2.3	1.9
	Mar	102.8	2.2	0.1	102.9	102.9	102.3	2.3	2.3	2.0
	Apr	103.7	2.5	0.9	103.9	103.9	103.0	2.7	2.6	2.3
	May	103.7	2.4	0.0	103.9	103.8	103.1	2.5	2.3	2.2
	Jun	102.4	0.9	(1.2)	102.6	102.7	101.5	1.0	1.1	0.4
	Jul	102.6	0.9	0.2	102.7	102.9	101.8	0.9	1.1	0.6
	Aug	102.8	1.0	0.2	102.8	103.1	102.0	1.0	1.1	0.7
	Sept	103.6	1.8	0.8	103.7	104.0	102.9	1.7	1.9	1.6
	Oct	104.1	2.2	0.5	104.2	104.4	103.4	2.2	2.4	2.0
	Nov	104.3	2.2	0.1	104.4	104.6	103.6	2.2	2.4	2.0
	Dec	104.4	2.2	0.1	104.4	104.7	103.7	2.1	2.4	2.0
2021										
	Jan	104.9	2.3	0.5	104.9	105.3	104.2	2.0	2.6	2.1
	Feb	105.2	2.4	0.3	105.1	105.6	104.5	2.1	2.7	2.3
	Mar	106.0	3.2	0.8	105.9	106.5	105.4	2.9	3.5	3.1
	Apr	109.6	5.6	3.3	109.7	110.0	108.4	5.5	5.9	5.2
	May	110.1	6.2	0.5	110.3	110.6	109.0	6.1	6.5	5.7
	Jun	110.8	8.2	0.6	111.0	111.3	109.6	8.2	8.3	7.9
	Jul	111.7	8.9	0.8	111.7	112.1	110.8	8.8	9.0	8.8
	Aug	111.8	8.8	0.1	111.8	112.3	110.9	8.7	8.9	8.8
	Sept	112.3	8.4	0.5	112.4	112.9	111.1	8.4	8.6	8.0
	Oct	113.3	8.8	0.9	113.3	113.8	112.4	8.7	9.0	8.6
	Nov	113.3	8.6	(0.0)	113.3	113.8	112.4	8.5	8.8	8.5
	Dec	113.5	8.7	0.1	113.4	113.9	112.7	8.6	8.8	8.7
2022										
	Jan	116.0	10.6	2.2	116.1	116.2	115.4	10.7	10.4	10.7
	Feb	116.3	10.6	0.3	116.4	116.7	115.6	10.8	10.4	10.6
	Mar	116.6	10.0	0.3	116.6	117.0	115.9	10.1	9.9	9.9
	Apr	120.1	9.6	3.0	120.5	120.4	118.8	9.9	9.4	9.6
	May	123.2	11.9	2.6	123.3	123.6	122.2	11.8	11.8	12.1
	Jun	124.8	12.7	1.3	125.0	125.1	124.0	12.7	12.4	13.1
	Jul	127.7	14.3	2.3	127.7	128.0	127.2	14.3	14.2	14.8
	Aug	128.1	14.6	0.3	128.0	128.5	127.7	14.5	14.5	15.1
	Sept	127.8	13.8	(0.3)	127.6	128.2	127.5	13.6	13.5	14.7
	Oct	128.1	13.1	0.2	128.0	128.4	127.8	12.9	12.8	13.8
	Nov	127.1	12.2	(0.8)	127.0	127.3	127.0	12.1	11.8	13.0
	Dec	127.6	12.4	0.4	127.4	127.8	127.6	12.3	12.2	13.3
2023										
	Jan	126.8	9.3	(0.6)	126.9	127.1	126.1	9.3	9.4	9.3
	Feb	126.9	9.1	0.1	126.9	127.3	126.1	9.0	9.1	9.1
	Mar	128.2	9.9	1.0	128.2	128.4	127.9	9.9	9.7	10.4
	Apr	129.7	7.9	1.1	129.7	130.0	129.0	7.6	7.9	8.6
	May	130.2	5.7	0.4	130.2	130.5	129.7	5.6	5.6	6.1
	Jun	130.5	4.6	0.2	130.5	130.9	130.0	4.4	4.6	4.8
% Change on last month		0.2			0.2	0.3	0.2			

Note: Figures may vary slightly due to the rounding off

TABLE 3: National Consumer Price Group And Section Indices (December 2018=100.0)

	Group Section	Weights	This month Jun 2023	Last month May 2023	3 months ago Mar 2023	6 months ago Dec 2022	12 months ago Jun 2022	Percentage Change on:			
								Last month	3 months ago	6 months ago	12 months
1	Food & Non-Alcoholic Beverages	13.55	139.7	139.0	136.6	133.8	123.8	0.5	2.2	4.4	12.9
1.1	Bread & Cereals	4.26	152.6	151.5	148.9	144.2	127.8	0.8	2.5	5.9	19.4
1.2	Meat (Fresh, Chilled & Frozen)	2.36	137.8	136.9	134.6	131.8	124.6	0.7	2.4	4.6	10.6
1.3	Fish (Fresh, Chilled & Frozen)	0.18	132.7	132.3	129.8	124.0	118.2	0.3	2.3	7.0	12.3
1.4	Milk, Cheese & Milk Products	0.98	126.7	125.3	122.8	121.1	115.5	1.1	3.1	4.6	9.7
1.5	Oils & Fats	0.92	179.3	182.2	184.5	182.7	163.2	(1.6)	(2.8)	(1.9)	9.9
1.6	Fruits	0.78	120.1	119.8	117.8	115.1	113.9	0.3	2.0	4.3	5.5
1.7	Vegetables	1.08	140.7	139.1	131.7	130.9	121.3	1.2	6.9	7.6	16.0
1.8	Sugar, Jam, Honey, Chocolate & Confectionery	1.11	111.6	110.9	109.7	108.6	105.7	0.7	1.8	2.8	5.6
1.9	Food Not Elsewhere Classified	0.54	130.3	129.8	128.0	125.5	120.5	0.4	1.8	3.9	8.1
1.10	Coffee, Tea & Cocoa	0.73	124.8	124.3	122.1	120.3	114.6	0.4	2.2	3.8	8.8
1.11	Mineral Waters, Soft Drinks, Fruits & Vegetables Juices	0.62	120.8	120.3	118.3	117.4	112.1	0.4	2.1	2.9	7.8
2	Alcoholic Beverages & Tobacco	4.34	130.2	129.8	126.5	124.8	124.3	0.3	3.0	4.3	4.8
2.1	Alcoholic Beverages	3.51	131.5	131.0	127.4	125.6	125.1	0.4	3.2	4.7	5.1
2.2	Tobacco	0.82	124.9	124.6	122.5	121.6	120.7	0.2	1.9	2.7	3.4
3	Clothing & Footwear	5.95	117.4	116.8	115.8	114.0	111.2	0.5	1.4	3.0	5.6
3.1	Clothing	2.60	117.5	116.8	115.8	113.5	111.3	0.6	1.5	3.5	5.6
3.2	Other Articles of Clothing	0.72	117.8	117.3	115.7	114.6	109.6	0.4	1.8	2.7	7.5
3.3	Cleaning, Repair & Hire	0.61	127.4	126.3	125.1	124.6	121.9	0.9	1.8	2.2	4.6
3.4	Footwear	2.03	114.1	113.8	113.0	111.3	108.3	0.3	1.0	2.6	5.4
4	Housing, Water, Electricity, Gas & Other Fuels	17.45	124.7	124.4	123.3	123.0	123.1	0.3	1.1	1.4	1.3
4.1	Rent Paid by Tenants	7.78	122.1	121.3	121.3	120.7	119.8	0.7	0.7	1.2	1.9
4.2	Materials for Maintenance & Repair of Dwellings	3.83	127.0	126.7	125.4	125.5	124.6	0.2	1.3	1.2	2.0
4.3	Water Supply & Miscellaneous Services	1.96	112.7	112.7	111.0	111.0	112.7	0.0	1.5	1.5	0.0
4.4	Electricity, Gas & Other Fuels	3.89	133.7	134.0	131.5	131.3	133.3	(0.2)	1.6	1.8	0.3
5	Furnishing, H/H Equipment & Routine Maintenance	4.85	119.9	120.1	118.9	116.9	113.5	(0.2)	0.9	2.6	5.6
5.1	Furniture & Furnishing	1.35	116.1	116.8	116.7	115.1	113.3	(0.6)	(0.5)	0.9	2.4
5.2	Carpets & Other Floor Coverings	0.27	114.8	114.4	114.9	115.1	112.7	0.4	(0.1)	(0.2)	1.8
5.3	Household Textiles	0.29	116.1	116.3	115.9	114.1	112.6	(0.2)	0.2	1.8	3.1
5.4	Household Appliances	0.72	122.9	122.6	120.9	118.8	115.7	0.2	1.6	3.4	6.2
5.5	Glassware, Tableware & Household Utensils	0.23	127.5	127.1	123.8	122.2	116.8	0.3	3.0	4.3	9.2
5.6	Small Tools, Miscellaneous Accessories	0.04	125.9	124.9	123.2	121.9	120.0	0.8	2.2	3.3	5.0
5.7	Goods & Services for Household Maintenance	1.95	121.7	121.9	119.9	117.3	112.6	(0.1)	1.5	3.7	8.1
6	Health	3.38	111.1	111.1	109.7	109.1	107.3	0.1	1.3	1.9	3.6
6.1	Medical Products, Applications & Equipments	0.98	122.2	121.8	119.5	117.2	112.3	0.3	2.3	4.3	8.8
6.2	Out-Patient Services	0.93	110.6	110.6	110.4	110.5	109.1	(0.0)	0.2	0.1	1.4
6.3	Hospital Services	1.47	104.1	104.1	102.8	102.8	102.8	0.0	1.3	1.3	1.3

TABLE 3: National Consumer Price Group And Section Indices (December 2018=100.0) (Cont.)

	Group Section	Weights	This month Jun 2023	Last month May 2023	3 months ago Mar 2023	6 months ago Dec 2022	12 months ago Jun 2022	Percentage Change on:			
								Last month	3 months ago	6 months ago	12 months ago
7	Transport	23.43	150.6	150.4	148.9	151.0	148.7	0.2	1.2	(0.3)	1.3
7.1	Purchase of Vehicles	5.74	152.8	152.2	146.9	146.7	137.9	0.4	4.0	4.2	10.8
7.2	Operation of Personal Transport	12.56	152.4	152.2	151.9	156.0	157.0	0.1	0.3	(2.3)	(2.9)
7.3	Transport Services	5.13	143.8	143.8	143.7	143.7	140.3	0.0	0.1	0.1	2.5
8	Communication	6.94	105.2	105.2	105.1	104.8	102.6	0.0	0.1	0.3	2.5
8.1	Postal Services	0.21	127.5	127.5	127.5	127.5	113.6	0.0	0.0	0.0	12.2
8.2	Telephone & Telefax Equipment *	1.13	115.2	115.0	114.5	113.1	109.0	0.2	0.6	1.9	5.7
8.3	Telephone & Telefax Services	5.60	102.3	102.3	102.3	102.3	100.9	0.0	0.0	0.0	1.4
9	Recreation & Culture	2.82	110.5	110.4	108.9	108.8	108.4	0.0	1.4	1.5	1.9
9.1	Audio Visual, Photographic & Information Processing Equipment	2.10	108.3	108.3	107.8	107.9	108.3	0.0	0.5	0.4	0.0
9.2	Other Recreational Items & Equipments	0.30	117.1	117.2	115.7	114.5	108.5	(0.1)	1.2	2.2	7.9
9.3	Recreational & Cultural Services	0.31	117.2	117.2	108.3	108.2	108.0	0.0	8.2	8.3	8.4
9.4	Newspapers, Books & Stationary	0.11	115.1	114.8	113.7	113.7	111.4	0.3	1.2	1.2	3.3
10	Education	4.60	118.5	118.5	118.5	112.8	112.8	0.0	0.0	5.1	5.1
10.1	Pre-Primary & Primary Education	1.89	122.3	122.3	122.3	114.0	114.0	0.0	0.1	7.3	7.4
10.2	Secondary & Tertiary Education	2.70	115.9	115.9	115.9	112.0	111.9	0.0	0.0	3.5	3.5
11	Restaurants & Hotels	3.66	120.9	120.1	117.8	116.4	113.4	0.6	2.6	3.9	6.5
11.1	Restaurants, Cafes & the Like	3.02	124.3	123.5	121.1	119.6	116.4	0.7	2.7	4.0	6.8
11.2	Accommodation Services	0.64	104.7	104.4	102.5	101.3	99.7	0.3	2.1	3.3	5.0
12	Miscellaneous Goods & Services	9.01	133.7	133.4	125.5	124.8	123.0	0.2	6.5	7.1	8.7
12.1	Personal Care	2.33	125.6	124.8	120.7	118.8	113.1	0.6	4.0	5.7	11.0
12.2	Personal Effects Not Elsewhere Classified	0.22	106.5	105.8	106.5	106.9	106.0	0.6	(0.1)	(0.5)	0.4
12.3	Social Protection	0.13	120.4	120.4	120.4	115.0	115.0	0.0	(0.0)	4.7	4.7
12.4	Insurance	3.62	150.9	151.0	134.9	134.5	135.2	(0.0)	11.9	12.2	11.7
12.5	Financial Services	1.09	124.4	124.1	122.7	122.8	120.7	0.2	1.4	1.3	3.0
12.6	Taxes, Licences & Fees	1.61	117.7	117.2	116.2	116.2	114.6	0.4	1.2	1.3	2.7
	All-Items Index	100.0	130.5	130.2	128.2	127.6	124.8	0.2	1.8	2.3	4.6

Note: Figures may vary slightly due to the rounding off

TABLE 4: Consumer Price Index By Tradeability (December 2018 = 100.0)

	All Items		Non-Tradable		Domestic Tradable		Imported Tradable		All Tradable		
	Index	Inflation	Index	Inflation	Index	Inflation	Index	Inflation	Index	Inflation	
Weights	100.00		42.29		15.46		42.26		57.71		
2020	Jan	102.6	2.2	102.5	2.4	105.0	4.2	101.8	1.5	102.6	2.2
	Feb	102.7	2.2	102.6	2.3	105.4	4.4	102.0	1.4	102.8	2.2
	Mar	102.8	2.2	102.6	2.3	105.6	4.2	102.0	1.4	102.9	2.1
	Apr	103.7	2.5	104.6	3.3	106.0	4.1	102.1	1.2	103.1	2.0
	May	103.7	2.4	104.7	3.3	106.6	4.2	101.8	0.8	103.1	1.7
	Jun	102.4	0.9	104.7	3.0	107.7	5.1	98.3	-2.7	100.8	-0.6
	Jul	102.6	0.9	104.7	2.9	108.1	5.2	98.5	-2.7	101.0	-0.6
	Aug	102.8	1.0	104.7	2.9	108.5	5.4	98.7	-2.5	101.3	-0.4
	Sept	103.6	1.8	106.4	4.4	108.6	5.3	99.1	-2.1	101.6	-0.1
	Oct	104.1	2.2	106.6	4.6	108.9	5.5	100.0	-1.3	102.3	0.5
	Nov	104.3	2.2	106.7	4.6	109.1	5.5	100.2	-1.3	102.6	0.6
	Dec	104.4	2.2	106.8	4.5	109.2	5.4	100.3	-1.3	102.6	0.5
2021	Jan	104.9	2.3	107.0	4.4	109.8	4.6	101.0	-0.7	103.4	0.7
	Feb	105.2	2.4	107.1	4.4	110.5	4.8	101.5	-0.5	103.8	1.0
	Mar	106.0	3.2	107.1	4.4	110.8	5.0	103.3	1.3	105.3	2.3
	Apr	109.6	5.6	109.8	4.9	113.7	7.2	107.9	5.7	109.4	6.1
	May	110.1	6.2	110.0	5.1	114.0	6.9	108.9	7.0	110.3	7.0
	Jun	110.8	8.2	110.8	5.8	114.0	5.9	109.7	11.6	110.8	10.0
	Jul	111.7	8.9	110.9	5.9	113.6	5.1	111.9	13.6	112.3	11.2
	Aug	111.8	8.8	111.0	5.9	113.8	4.8	112.0	13.4	112.4	11.0
	Sept	112.3	8.4	111.4	4.6	114.4	5.3	112.5	13.6	113.0	11.3
	Oct	113.3	8.8	111.5	4.6	114.7	5.4	114.6	14.7	114.7	12.0
	Nov	113.3	8.6	111.5	4.5	114.8	5.3	114.6	14.3	114.6	11.8
	Dec	113.5	8.7	111.9	4.7	115.1	5.3	114.5	14.2	114.7	11.7
2022	Jan	116.0	10.6	113.1	5.6	115.6	5.2	119.1	17.9	118.2	14.3
	Feb	116.3	10.6	113.2	5.7	115.9	4.9	119.7	18.0	118.7	14.3
	Mar	116.6	10.0	113.3	5.8	116.2	4.9	120.1	16.3	119.1	13.1
	Apr	120.1	9.6	116.5	6.1	117.9	3.7	124.6	15.5	122.8	12.2
	May	123.2	11.9	116.8	6.1	119.2	4.6	131.0	20.3	127.9	16.0
	Jun	124.8	12.7	118.7	7.1	122.4	7.3	131.9	20.3	129.4	16.8
	Jul	127.7	14.3	119.0	7.3	124.8	9.9	137.6	23.0	134.2	19.4
	Aug	128.1	14.6	119.0	7.3	125.6	10.4	138.2	23.4	134.8	19.9
	Sept	127.8	13.8	119.2	7.0	126.8	10.8	136.8	21.6	134.2	18.7
	Oct	128.1	13.1	119.1	6.8	127.9	11.5	137.2	19.7	134.8	17.5
	Nov	127.1	12.2	119.2	6.9	128.3	11.7	134.5	17.4	132.8	15.9
	Dec	127.6	12.4	119.4	6.7	129.4	12.4	135.2	18.0	133.6	16.5
2023	Jan	126.8	9.3	119.8	6.0	130.6	13.0	132.4	11.1	131.9	11.6
	Feb	126.9	9.1	119.9	5.9	131.1	13.2	132.4	10.6	132.0	11.2
	Mar	128.2	9.9	120.1	6.0	131.8	13.4	135.0	12.4	134.2	12.7
	Apr	129.7	7.9	121.8	4.6	133.3	13.1	136.2	9.3	135.4	10.3
	May	130.2	5.7	122.1	4.6	134.1	12.5	136.9	4.5	136.2	6.5
	Jun	130.5	4.6	122.4	3.1	134.6	10.0	137.2	4.0	136.5	5.5
% Change on last month		0.2		0.2		0.4		0.2		0.3	

Note: Figures may vary slightly due to the rounding off

TABLE 5: Core Inflation Rates By Exclusion And Trimmed Mean

Year	Month	Consumer Price Index (Trimmed Mean) (December 2018 = 100)	Core Monthly Inflation Rate (Trimmed Mean) (percentage)	Consumer Price Index (Excluding Administered Prices) (December 2018 = 100)	Core Monthly Inflation (Excluding Administered Prices) (percentage)
2020					
	Jan	102.2	1.9	103.2	2.7
	Feb	102.4	1.9	103.4	2.7
	Mar	102.5	1.9	103.5	2.7
	Apr	102.7	1.8	103.8	2.6
	May	103.0	1.6	104.0	2.6
	Jun	102.7	1.0	104.4	2.8
	Jul	102.9	1.0	104.7	2.8
	Aug	103.1	1.1	104.9	2.9
	Sept	104.0	1.8	105.3	3.1
	Oct	104.4	2.2	105.6	3.4
	Nov	104.6	2.2	105.8	3.4
	Dec	104.7	2.1	105.9	3.3
2021					
	Jan	105.3	2.2	106.7	3.4
	Feb	105.6	2.4	107.1	3.6
	Mar	106.2	2.8	107.5	3.9
	Apr	109.6	5.4	110.1	6.1
	May	110.0	5.8	110.9	6.7
	Jun	111.0	7.9	111.6	6.8
	Jul	113.0	8.4	112.0	7.0
	Aug	113.1	8.3	112.1	6.8
	Sept	113.1	8.0	112.7	7.1
	Oct	113.7	8.2	113.2	7.2
	Nov	113.7	8.0	113.2	7.0
	Dec	113.9	8.0	113.4	7.1
2022					
	Jan	116.2	8.8	113.8	6.7
	Feb	116.6	8.8	114.4	6.8
	Mar	116.9	8.6	114.8	6.8
	Apr	119.9	8.1	116.5	5.9
	May	121.9	9.4	118.0	6.4
	Jun	123.7	10.3	119.0	6.6
	Jul	125.8	11.5	120.4	7.6
	Aug	126.1	11.8	121.1	8.0
	Sept	126.0	11.4	121.7	8.0
	Oct	126.3	11.1	122.2	8.0
	Nov	125.9	10.8	122.6	8.3
	Dec	126.5	11.2	123.3	8.7
2023					
	Jan	127.0	8.5	124.2	9.1
	Feb	127.0	8.2	124.3	8.7
	Mar	128.5	9.2	125.1	8.9
	Apr	128.9	7.1	126.2	8.3
	May	126.0	5.4	127.0	7.7
	Jun	126.7	4.3	127.5	7.1

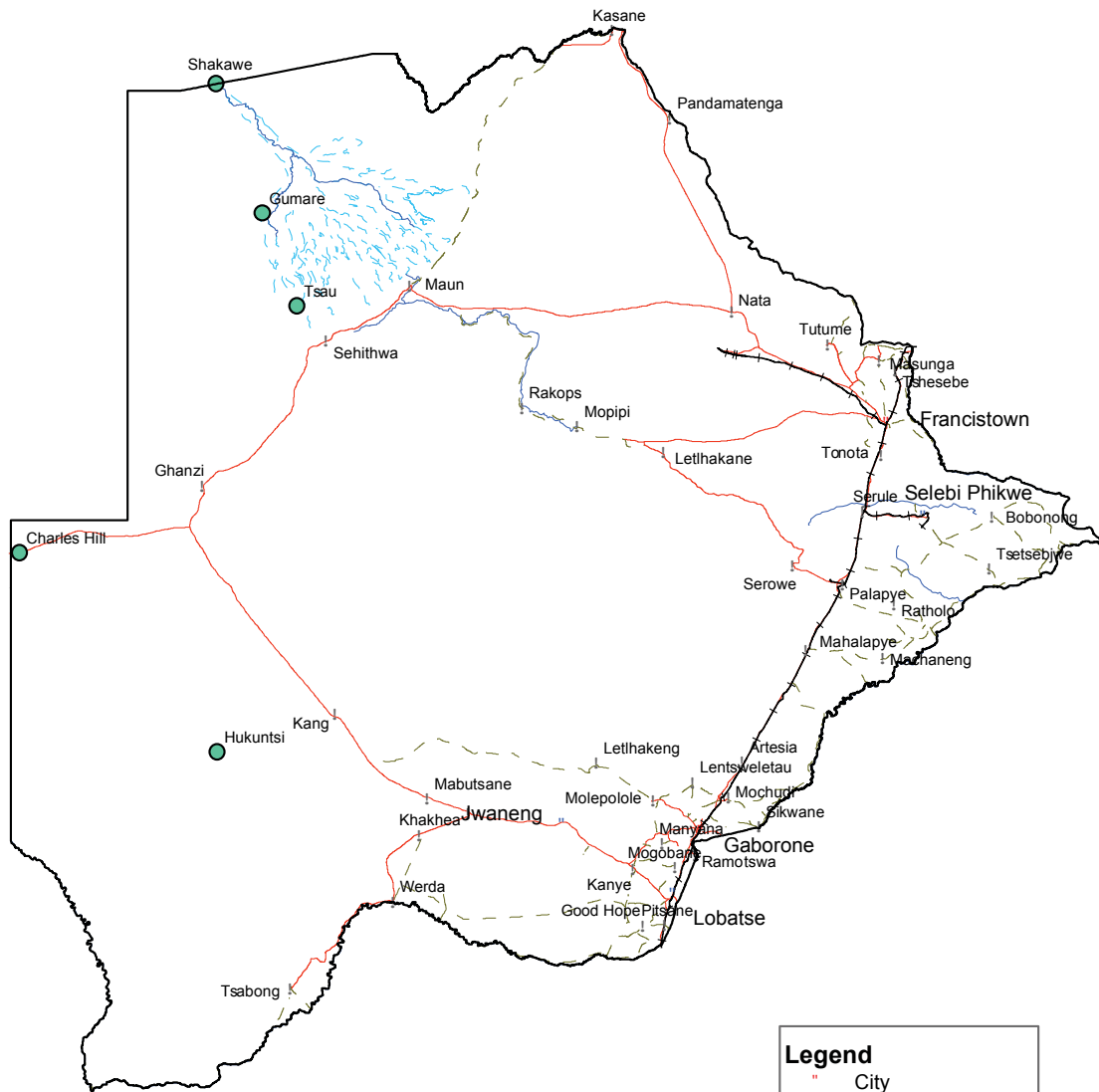
Note: Figures may vary slightly due to the rounding off

TABLE 6: Average Annual Inflation (December 2018=100)

	Group	Weights	2012	2013	2014	2015	2016	2017	2018	2019	2020	2021	2022
1	Food & Non-Alcoholic Beverages	13.55	8.0	5.4	3.0	1.3	2.7	3.4	(0.5)	1.4	3.7	6.0	11.1
2	Alcoholic Beverages & Tobacco	4.34	7.6	10.3	9.0	6.1	2.5	4.5	1.1	2.8	5.4	8.9	5.3
3	Clothing & Footwear	5.95	7.5	6.3	6.0	7.6	6.5	3.2	1.8	1.3	2.2	3.5	4.4
4	Housing, Water, Electr. Gas & Other Fuels	17.45	7.7	4.3	3.9	7.1	6.3	5.4	4.1	2.1	5.1	7.7	6.6
5	Furnishing, H/H Equipment & Routine Maintenance	4.85	7.3	4.9	5.0	6.1	3.0	3.3	2.1	2.1	2.4	3.7	5.5
6	Health	3.38	5.9	5.5	8.3	6.3	3.0	2.4	1.1	1.0	1.3	2.7	2.7
7	Transport	23.43	10.8	7.3	1.2	(5.1)	(2.7)	1.6	7.5	6.2	(2.4)	12.3	31.1
8	Communication	6.94	(1.4)	0.3	0.3	0.3	0.2	0.5	(4.6)	(3.8)	0.5	1.3	1.3
9	Recreation & Culture	2.82	5.8	4.5	4.2	5.7	3.0	2.2	1.8	0.4	(0.2)	3.5	4.2
10	Education	4.60	6.4	4.7	7.4	6.4	3.7	4.1	5.5	3.1	4.7	2.2	2.2
11	Restaurants & Hotels	3.66	8.4	7.9	7.6	5.5	4.0	3.7	3.4	2.5	3.2	3.1	5.2
12	Miscellaneous Goods & Services	9.01	2.0	1.2	5.2	7.2	7.5	3.9	6.4	5.3	2.0	5.4	8.8
	All-Items Index	100.0	7.5	5.9	4.4	3.1	2.8	3.3	3.2	2.8	1.9	6.7	12.1

Note: Figures may vary slightly due to the rounding off

CPI Area Coverage



01 50 00 2003 00 400 Kilometers

Legend

- City
- Towns
- ! Major Villages
- Rivers
- Main Roads
- - - Secondary Roads
- +— Railway
- - - Swamp

Compiled and Prepared by Statistics Botswana, 2016

Glossary

Consumer Price Index (CPI) is an index which measures price changes in goods and services with reference to a base period.

Inflation is a measurement of prices movement of goods and services in a particular country.

Domestic Tradeables refers to the goods and services which a country (Botswana) can export to other countries.

Imported Tradeables represents the goods and services which a country (Botswana) imports from other countries (trading partners).

Non-Tradeables refers to the goods and services which a country cannot either export or import to other countries.

All –Tradeables refers to the total of **Domestic** and **Imported Tradeables**.

Trimmed Mean Core Inflation- attempts to remove 8 percent (by weight) of the commodity sub-groups with the largest price changes at each of the ends of an ordered series of price changes in any given month.

Core inflation by Exclusion is a measure used to remove the volatility inherent in prices that are only adjusted periodically and not always in response to currently prevailing market forces.





**CONSUMER
PRICE
INDEX**
JUNE 2023

Private Bag 32
Ghanzi
Tel: 371 5723 Fax: 659 7506

Private Bag F193,
Francistown
Tel. 241 5848, Fax. 241 7540

Private Bag 0024, Gaborone
Tel: 3671300 Fax: 3952201
Toll Free: 0800 600 200

Private Bag 47
Maun
Tel: 371 5716 Fax: 686 4327

E-mail: info@statsbots.org.bw Website: <http://www.statsbots.org.bw>