

TOURISM STATISTICS 2005

Published By

**Central Statistics Office
Private Bag 0024, Gaborone
Website: www.cso.gov.bw/cso
E-mail: csobots@gov.bw**

**Contact: Demography Unit
Contact Statistician: Virginia Sebekedi
Tel: (267) 3671300/ (267)3190718
Fax: (267) 3952201**

**Printed by and obtainable from
Department of Printing and Publishing Services,
Private Bag 0081
Gaborone
Tel: (267) 3953202, Fax: (267) 3959392**

April 2007

COPYRIGHT RESERVED

**Extracts may be published if source
is duly acknowledged**

PREFACE

This publication is the twenty- eighth in the series of Tourism Statistics. It is an annual publication of the Central Statistics Office (CSO). The information contained in this publication is compiled from the Immigration Arrival/Departure forms.

Travelers into and out of Botswana complete arrival and departure forms at all immigration posts in Botswana. In case of those immigration posts handling heavy passenger traffic, a ten percent sample of forms is selected for analysis and the resulting figures are grossed up accordingly. In the remaining immigration posts, all the forms are analyzed and added to the grossed up figures from the busiest posts. Starting from October 1990, Botswana citizens were not required to complete immigration forms. The figures on arrivals and departures contained in this publication therefore cover only non-citizens, both visitors and temporary residents of Botswana.

Hotels Statistics section is not included in this publication because by the time of preparing this report, the response rate from the Hotels was very low, below 50 percent. So this report is published without the Hotels statistics information.

It is important that the Immigration Department ensure that the arrival/departure forms are completed properly and by all as this helps to improve the quality of data, as well the Tourism Department has to do their best by making sure that the Hotels respond.

Users who require more information can contact the Demography Unit of CSO at the address on the copyright page. This publication is a result of cooperative efforts by the Immigration Department and the Demography Unit of the CSO.



Malebogo P. Kerekang
ACTING GOVERNMENT STATISTICIAN

Table of Contents

EXECUTIVE SUMMARY	1
1.0 Introduction	1
2.0 Arrangement of Tables	1
3.0 Total Arrivals.....	1
3.1 Arrivals by Country of Residence	2
3.2 Arrivals by Purpose of Entry	2
3.3 Distribution of Arrivals by Sex and Age group	3
3.4 Arrivals by Border Post	3
3.5 Month of Arrival.....	4
3.6 Mode of Travel	4
4.0 Total Departures	5
4.1 Departures by Sex and Age	5
4.2 Departures by Country of Residence	5
4.3 Distribution by Month, Mode of Travel and Border.....	6
Table 1: Total Arrivals by Country of Residence and Sex - 2005 (Cont'd).....	9
Table 2: Total Arrivals by Purpose of Entry and Sex - 2005.....	9
Table 3: Total Arrival by Purpose of Entry and Age - 2005.....	10
Table 4: Total Arrivals by country of Residence and Purpose of Entry - 2005	11
Table 4: Total Arrivals by country of Residence and Purpose of Entry – 2005 (cont'd)	12
Table 4: Total Arrivals by country of Residence and Purpose of Entry – 2005 (cont'd)	13
Table 4: Total Arrivals by country of Residence and Purpose of Entry – 2005 (cont'd)	14
Table 5: Total Arrivals By Country of Residence and Month of Arrival - 2005	15
Table 5: Total Arrivals By Country of Residence and Month of Arrival – 2005 (cont'd)	16
Table 5: Total Arrivals By Country of Residence and Month of Arrival – 2005 (cont'd)	17
Table 5: Total Arrivals By Country of Residence and Month of Arrival – 2005 (cont'd)	18
Table 6: Total Arrivals by Country of Residence and Border Post - 2005	19
Table 6: Total Arrivals by Country of Residence and Border Post – 2005 (cont'd).....	20
Table 6: Total Arrivals by Country of Residence and Border Post – 2005 (cont'd).....	21
Table 6: Total Arrivals by Country of Residence and Border Post – 2005 (cont'd).....	22
Table 6: Total Arrivals by Country of Residence and Border Post – 2005 (cont'd).....	22
Table 6: Total Arrivals by Country of Residence and Border Post – 2005 (cont'd).....	23
Table 6: Total Arrivals by Country of Residence and Border Post – 2005 (cont'd).....	24
Table 6: Total Arrivals by Country of Residence and Border Post – 2005 (cont'd).....	25
Table 7: Arrivals by border Post and Month of Arrival - 2005	26
Table 7: Arrivals by border Post and Month of Arrival - 2005	27
Table 8: Total Arrivals by Arrival Month and Mode of travel - 2005	28
Table: 9 Total Arrivals by Age Group and Sex - 2005.....	28
Table 10: Total Arrivals by Country of Residence and Age Group - 2005	29
Table 10: Total Arrivals by Country of Residence and Age Group – 2005 (cont'd).....	30
Table 10: Total Arrivals by Country of Residence and Age Group – 2005 (cont'd).....	31
Table 10: Total Arrivals by Country of Residence and Age Group – 2005 (cont'd).....	32
Table 11: Total Arrivals by Nationality and Age Group - 2005	33
Table 11: Total Arrivals by Nationality and Age Group – 2005 (cont'd)	34
Table 11: Total Arrivals by Nationality and Age Group – 2005 (cont'd)	35
Table 11: Total Arrivals by Nationality and Age Group – 2005 (cont'd)	36
Table 12: Total Arrivals by Border Post and Purpose of Entry - 2005.....	37
Table 12: Total Arrivals by Border Post and Purpose of Entry - 2005.....	38
Table 13: Total Arrivals by Month and purpose of Entry - 2005	39
Table 14: Total Arrivals by nationality and Purpose of Entry - 2005.....	40

Table 14: Total Arrivals by nationality and Purpose of Entry – 2005 (cont'd)	41
Table 14: Total Arrivals by nationality and Purpose of Entry – 2005 (cont'd)	42
Table 14: Total Arrivals by nationality and Purpose of Entry – 2005 (cont'd)	43
Table 15: Total Arrivals by Month and Quarter for years 1995 - 2005	44
Table 16: Total Departures by Country of Residence and sex - 2005	45
Table 16: Total Departures by Country of Residence and sex - 2005 (cont'd)	46
Table 1: Total Departures by Country of Residence and sex - 2005 (cont'd)	47
Table 17: Total Departure By Country of Residence and Age Group - 2005.....	48
Table 17: Total Departure By Country of Residence and Age Group – 2005 (cont'd)	49
Table 17: Total Departure By Country of Residence and Age Group – 2005 (cont'd)	50
Table 17: Total Departure By Country of Residence and Age Group – 2005 (cont'd)	51
Table 18: Total Departures by Country of Residence and Month - 2005	52
Table 18: Total Departures by Country of Residence and Month - 2005 (cont'd)	53
Table 18: Total Departures by Country of Residence and Month - 2005 (cont'd)	54
Table 18: Total Departures by Country of Residence and Month - 2005 (cont'd)	55
Table 19: Total Departures by Country of Residence and Border Post - 2005.....	56
Table 19: Total Departures by Country of Residence and Border Post – 2005 (cont'd)	57
Table 19: Total Departures by Country of Residence and Border Post – 2005 (cont'd)	58
Table 19: Total Departures by Country of Residence and Border Post – 2005 (cont'd)	59
Table 19: Total Departures by Country of Residence and Border Post – 2005 (cont'd)	60
Table 19: Total Departures by Country of Residence and Border Post – 2005 (cont'd)	61
Table 19: Total Departures by Country of Residence and Border Post – 2005 (cont'd)	62
Table 19: Total Departures by Country of Residence and Border Post – 2005 (cont'd)	63
Table 20. Total Departures by Border Post and Month - 2005.....	64
Table 20. Total Departures by Border Post and Month - 2005 (cont'd)	65
Table 21: Total Departures by Month and Mode of Travel - 2005.....	66

EXECUTIVE SUMMARY

1.0 Introduction

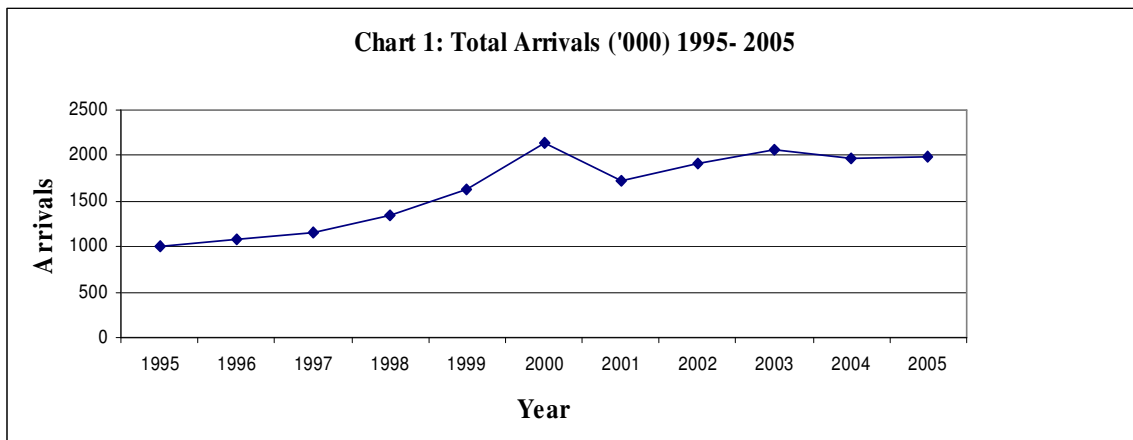
Tourism Statistics Report is an annual publication containing statistics of residents and non-residents entering and leaving the country. Country of residence, nationality, purpose of entry, mode of travel, point of entry/departure or border post, age and sex classify the statistics compiled in this report. This information is collected through the border posts from the departure/entry forms, filled by persons crossing the border. It is worth noting that only non-citizens fill this form, as citizens are exempted from filling it.

2.0 Arrangement of Tables

Tables in this publication deal with two categories of arrivals and departures. Tables 1 to 15 give information on arrivals, and Tables 16 to 21 provide information on departures.

3.0 Total Arrivals

The number of arrivals in 2005 shows an increase from 1,976,749 in year 2004 to 1 988 027 representing 0.6 percent increase (Table 1). Chart 1 exhibits arrival trends from 1995 up to 2005. The arrivals pattern shows an increasing trend with the exception of 2001 and 2004.

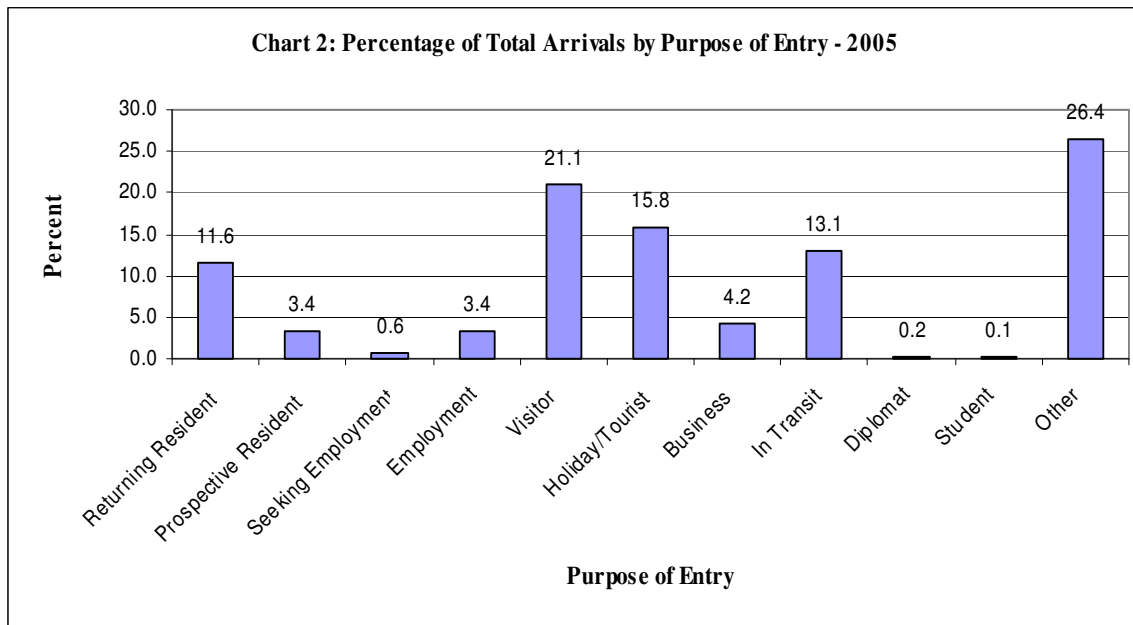


3.1 Arrivals by Country of Residence

The country of Republic of South Africa constituted the highest proportion of (32.9 percent) all persons who came to Botswana in 2005 (32.9 percent) followed by Zimbabwe (26.6 percent) (Table 1). This can be linked to the closeness of these countries to Botswana and also being trade partners. The highest proportion of arrivals (87.7 percent) was from Africa. The European countries constituted only 3.9 percent of the total arrivals while America contributed 1.7 percent and the continents of Asia and Oceania constituted 0.7 percent and 0.6 percent respectively.

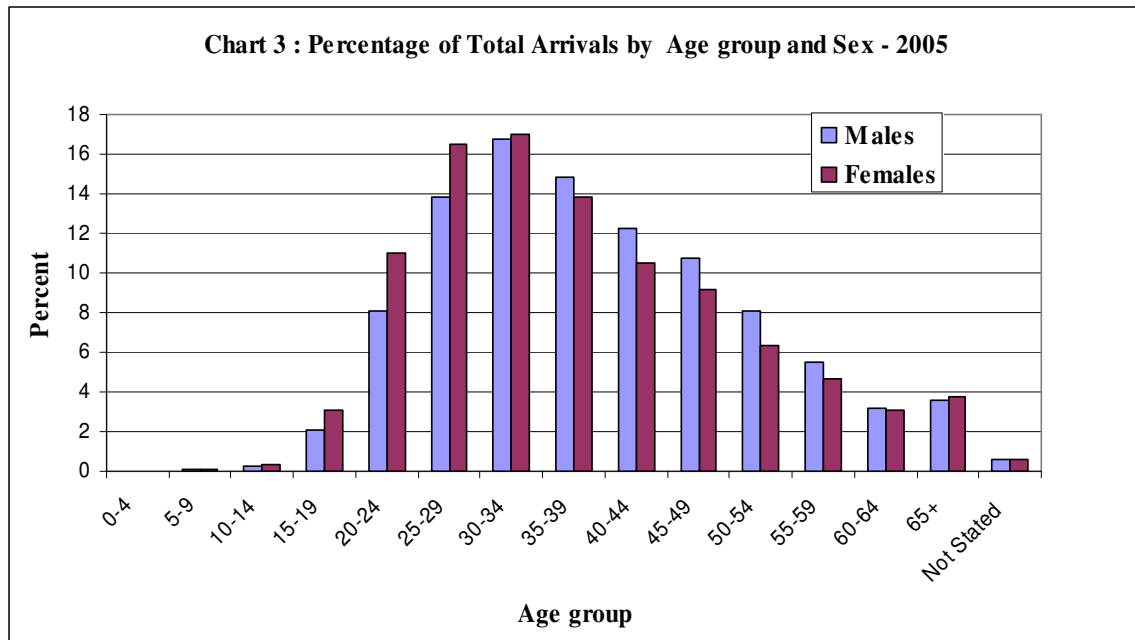
3.2 Arrivals by Purpose of Entry

Table 2 and Chart 2 indicate that most of the arrivals came as Visitors and Holiday/Tourist constituting to 21.1 and 15.8 percent respectively. More males than females entered the country for different reasons. It is only for “visiting” reasons where females dominated males. The highest number of visitors came from Zimbabwe, while South Africa contributed the highest proportion among persons on holiday (tourists).



3.3 Distribution of Arrivals by Sex and Age group

The report shows that males constituted the highest proportion of arrivals. There were about 1.208 million males and about 0.780 million females (Table 9). The highest proportion of the total arrivals was in age group 30 – 34 by 16.9 percent, followed by age group 25 - 29 at 14.9 percent (Chart 3). The lowest number of arrivals was recorded in the age group 0-4 years (0.003 percent). This low figure may have been mainly attributable to non-filling of the arrival/departure forms by this age group, since they normally accompany their parents. The main purpose of arrival was “visiting” for both sexes (See Table 2).

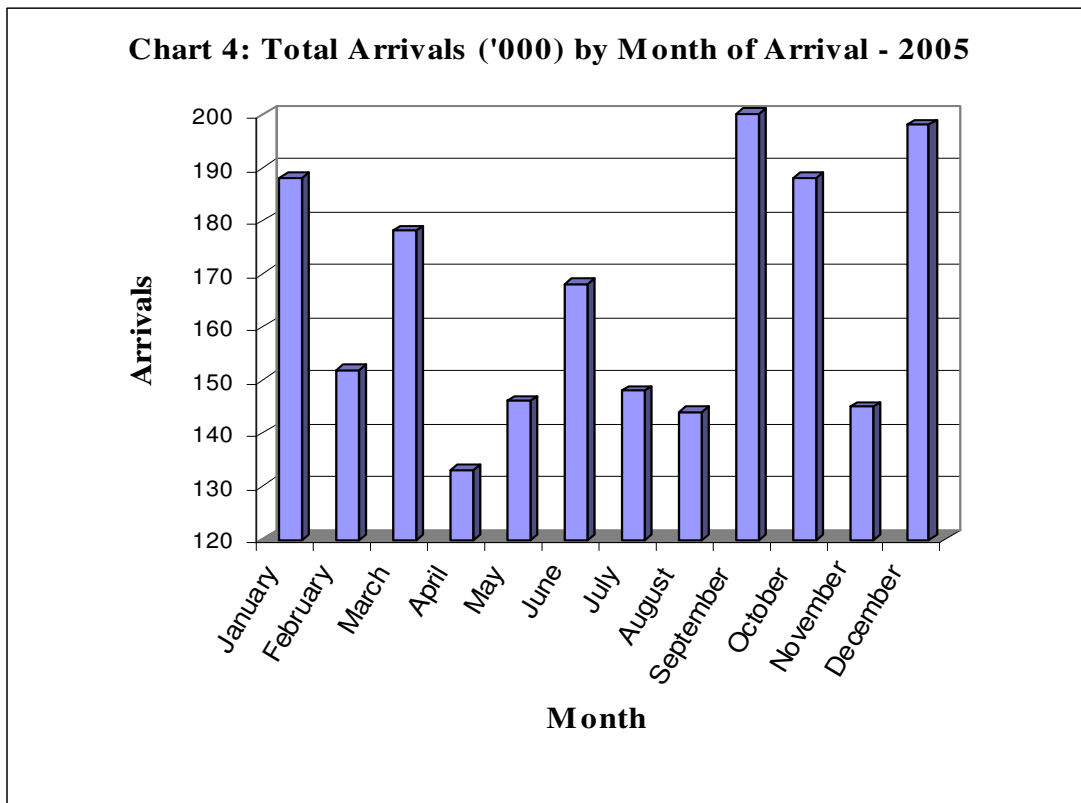


3.4 Arrivals by Border Post

There were about 534,250 arrivals using Ramokgwebana road as the point of entry out of 1,988,027 persons (Table 7). This border had the highest proportion of 26.9 percent. The next border posts were Tlokweng gate and Ramatlabama road at 11 percent and 9.7 percent respectively. The lowest proportion (0.001 percent) of entrants used Ghanzi Airport. Sir Seretse Khama Airport had the highest proportion of arrivals of 3.1 percent when compared to other airports.

3.5 Month of Arrival

Chart 4 shows that September was the busiest month of arrival with 200,444 persons entering the country. The second busiest month is December and January with 197,811 and 188,193 respectively (Table 8). The least number of arrivals occurred in April with 132,755 persons. Most of the persons (21.1 percent) entered the country for visiting purposes see Table 13.



3.6 Mode of Travel

The most common mode of travel is road, which is used by 95.4 percent of all persons entering the country (Table 8). This is attributable to the fact that most of the entry borders are through the road. Those who used air were about 4.4 percent; the rest used other modes like boat.

4.0 Total Departures

A total of 1,867,665 departures were recorded in 2005 (Table 16), there is a slight decrease of 6.9 percent from 2004 departure figure of about 2 million. This minor difference could have resulted from some border posts that ran out of departure/arrival forms for some weeks. The 2004 figure shows that there were fewer arrivals than departures. Out of all departures, males constituted the highest proportion of 60.0 percent compared to their female counterparts.

4.1 Departures by Sex and Age

Table 17 shows that age group 30-34 recorded the highest proportion of 17.1 percent of the total departures. The second largest proportion of departures was recorded in age group 25-29, which were 15.2 percent followed by age group 35-39 with 14.8 percent. South Africa recorded the highest proportion 39.9 percent of elderly aged, 65 and above years.

4.2 Departures by Country of Residence

People departing from Botswana were mostly from Southern Africa countries of Zimbabwe (31.2 percent) followed by South Africa (28.5 percent), Zambia (5.5 percent) and Namibia (4.4 percent) see Table 16. Departures from America were mostly from United States of America. The Europeans were mostly residents of the United Kingdom and the Asians were residing in Japan.

4.3 Distribution by Month, Mode of Travel and Border

Most of the departures in 2005 left during December (14.7 percent) followed by September (10.8 percent) and March (9.4 percent) and then April and July (8.6 percent and 8.3 percent respectively) as shown in Table 20. These months constituted the highest proportions, the reason could be that there are public holidays like Christmas, Presidential and Easter holidays. The highest proportion left through Ramokgwebana road (33.5 percent) followed by Tlokweng Gate (13.0 percent) and then Kazungula ferry (7.1 percent), see Table 20. Majority of monthly departures were by road (93.3 percent) followed by those who used air with 5.4 percent (Table 21). Among those using air as their mode of travel 70.2 percent used Sir Seretse Khama airport and Ghanzi was the least with 0.03 percent.

Table 1: Total Arrivals by Country of Residence and Sex - 2005

Country of Residence	Male	Female	Total
Africa			
Republic of South Africa	471,974	181,314	653,288
Zimbabwe	227,325	302,394	529,719
Botswana	198,357	101,062	299,419
Zambia	86,171	54,934	141,105
Namibia	66,075	32,726	98,801
Lesotho	1,981	2,041	4,022
Swaziland	2,705	1,181	3,886
Malawi	2,931	722	3,653
Kenya	1,588	825	2,413
Tanzania	1,341	472	1,813
Uganda	893	321	1,214
Mozambique	302	213	515
Angola	275	192	467
Nigeria	328	91	419
Mauritius	206	183	389
Democratic Republic of Congo	280	100	380
Ethiopia	292	52	344
Ghana	130	31	161
Madagascar	50	90	140
Libya	60	40	100
Egypt	50	40	90
Tunisia	60	20	80
Senegal	40	20	60
Reunion	40	12	52
Seychelles	21	30	51
Cameroon	40	-	40
Eritrea	30	-	30
Gabon	20	10	30
Other Africa	182	73	255
America			
United States of America	14,384	15,528	29,912
Canada	1,577	2,033	3,610
Argentina	111	92	203
Mexico	127	51	178
Brazil	110	40	150
Cuba	70	60	130
Chile	53	54	107
Other America	125	131	256
Asia			
Japan	2,557	4,031	6,588
India	1,154	697	1,851
China	1,214	380	1,594
Korea	370	350	720
Israel	220	90	310
Pakistan	190	60	250

Table 1: Total Arrivals by Country of Residence and Sex - 2005 (Cont'd)

Country of Residence	Male	Female	Total
Asia			
Singapore	112	124	236
Taiwan	120	116	236
Sri Lanka	82	80	162
Bangladesh	130	30	160
Hong Kong	104	33	137
Malaysia	82	50	132
Thailand	50	72	122
Lebanon	60	10	70
Philippines	22	40	62
Saudi Arabia	50	11	61
Turkey	41	20	61
Indonesia	11	30	41
Kuwait	-	40	40
Other Asia	72	50	122
Europe			
United Kingdom	11,805	11,095	22,900
Germany	8,310	7,248	15,558
Netherlands	4,495	4,989	9,484
France	3,279	3,134	6,413
Italy	2,292	2,033	4,325
Spain	1,759	2,097	3,856
Switzerland	1,497	1,499	2,996
Belgium	1,227	932	2,159
Ireland	838	745	1,583
Sweden	828	670	1,498
Denmark	655	624	1,279
Austria	673	568	1,241
Norway	510	459	969
Russia	443	393	836
Portugal	422	299	721
Czechoslovakia	258	193	451
Poland	272	126	398
Finland	108	202	310
Greece	93	70	163
Yugoslavia	30	130	160
Hungary	31	80	111
Bulgaria	60	40	100
Slovakia	42	10	52
Ukraine	2	50	52
Luxembourg	30	22	52
Romania	20	31	51
Belarus	50	-	50
Estonia	22	20	42
Monaco	21	20	41
Lithuania	20	20	40
Croatia	20	10	30

Table 1: Total Arrivals by Country of Residence and Sex - 2005 (Cont'd)

Country of Residence	Male	Female	Total
Other Europe	10	50	60
Oceania			
Australia	4,281	4,499	8,780
New Zealand	1,192	1,138	2,330
Not Stated	75,361	33,138	108,499
Total	1,207,901	780,126	1,988,027

Table 2: Total Arrivals by Purpose of Entry and Sex - 2005

Entry Purpose	Male	Female	Total
Returning Resident	149,770	81,814	231,584
Prospective Resident	33,726	32,924	66,650
Seeking Employment	9,042	3,411	12,453
Employment	39,553	27,874	67,427
Visitor	189,504	230,784	420,288
Holiday/Tourist	196,302	117,356	313,658
Business	72,339	11,505	83,844
In Transit	189,216	71,166	260,382
Diplomat	2,983	1,746	4,729
Student	1,669	1,006	2,675
Other	309,035	190,751	499,786
Not Stated	14,762	9,789	24,551
Total	1,207,901	780,126	1,988,027

Table 3: Total Arrival by Purpose of Entry and Age - 2005

Entry Purpose	0-4	5-9	10-14	15-19	20-24	25-29	30-34	35-39	40-44	45-49	50-54	55-59	60-64	65+	Not Stated	Total
Returning Resident	-	150	1,019	5,243	10,017	24,893	41,022	42,906	33,749	29,368	19,335	12,496	5,359	5,067	960	231,584
Prospective Resident	-	144	287	1,983	8,508	11,395	11,662	9,329	5,996	5,659	4,311	3,056	1,451	2,177	692	66,650
Seeking Employment	-	-	60	331	966	1,630	1,979	1,610	1,545	1,230	1,205	798	462	585	52	12,453
Employment	-	30	209	1,485	3,795	6,530	7,905	8,041	6,598	6,864	6,010	6,439	5,743	7,394	384	67,427
Visitor	30	322	1,343	11,713	62,680	87,609	79,791	57,111	36,564	29,237	19,661	12,558	7,552	11,401	2,716	420,288
Holiday/Tourist	-	222	701	7,375	26,045	42,650	45,894	38,513	37,223	32,721	27,138	21,298	15,470	16,740	1,668	313,658
Business	-	41	64	583	4,532	9,754	14,294	12,853	12,055	9,947	9,963	5,320	2,689	1,408	341	83,844
In Transit	-	201	911	8,411	21,080	33,928	43,982	39,917	33,730	28,061	19,663	12,790	7,843	8,413	1,452	260,382
Diplomat	-	-	20	180	277	595	807	713	561	698	393	175	123	167	20	4,729
Student	-	-	42	373	576	342	380	261	212	162	164	40	40	43	40	2,675
Other	30	345	1,620	11,105	43,116	73,764	83,418	71,898	58,852	55,310	37,623	26,862	14,300	18,223	3,320	499,786
Not Stated	-	-	121	462	2,310	3,081	3,931	3,747	2,759	2,737	1,864	1,351	821	1,029	338	24,551
Total	60	1,455	6,397	49,244	183,902	296,171	335,065	286,899	229,844	201,994	147,330	103,183	61,853	72,647	11,983	1,988,027

Table 4: Total Arrivals by country of Residence and Purpose of Entry - 2005

Country of Residence	Returning Resident	Prospective Resident	Seeking Employment	Employment	Visitor	Holiday/Tourist	Business	In Transit	Diplomat	Student	Other	Not Stated	Total
Africa													
South Africa	3,921	21,738	5,424	17,936	102,532	140,425	54,768	105,681	1,774	553	189,648	8,888	653,288
Zimbabwe	2,161	25,901	1,627	4,110	268,490	63,121	12,557	36,005	813	300	112,064	2,570	529,719
Botswana	220,299	3,409	294	8,569	2,635	2,357	1,724	700	702	462	54,201	4,067	299,419
Zambia	1,201	5,180	1,291	1,161	15,281	12,672	4,690	38,492	250	270	57,147	3,470	141,105
Namibia	225	1,474	1,623	913	7,969	5,530	1,565	52,795	148	102	25,186	1,271	98,801
Lesotho	50	391	30	142	923	533	232	281	20	100	1,210	110	4,022
Swaziland	72	150	40	291	761	691	422	422	10	70	947	10	3,886
Malawi	30	222	70	42	860	393	202	690	30	40	1,052	22	3,653
Kenya	50	250	40	143	563	342	212	252	10	50	491	10	2,413
Tanzania	50	70	1	92	512	289	103	210	22	11	443	10	1,813
Uganda	-	230	20	20	280	190	63	160	-	30	221	-	1,214
Mozambique	1	20	32	100	60	140	40	72	-	10	40	-	515
Angola	10	10	-	42	20	111	60	20	32	10	152	-	467
Nigeria	-	20	-	22	93	122	10	-	40	20	92	-	419
Mauritius	12	10	-	40	52	141	42	10	20	-	62	-	389
DRC	-	-	-	60	50	80	50	30	20	-	90	-	380
Ethiopia	-	30	-	50	50	52	40	10	-	20	72	20	344
Ghana	-	1	-	20	20	30	50	-	10	-	30	-	161
Madagascar	-	-	-	-	-	50	-	-	30	10	50	-	140
Libya	-	20	-	10	30	-	10	-	10	-	20	-	100
Egypt	-	-	-	10	-	70	-	-	-	-	10	-	90
Tunisia	-	-	-	-	20	20	20	-	-	-	20	-	80
Senegal	-	-	-	10	10	10	20	-	-	-	10	-	60
Reunion	-	20	-	2	10	10	-	10	-	-	-	-	52
Seychelles	-	-	-	10	-	10	-	-	-	-	31	-	51
Cameroon	-	-	-	-	-	-	-	-	-	-	40	-	40
Eritrea	-	-	-	-	10	10	-	-	-	10	-	-	30

Table 4: Total Arrivals by country of Residence and Purpose of Entry – 2005 (cont'd)

Country of Residence	Returning Resident	Prospective Resident	Seeking Employment	Employment	Visitor	Holiday/Tourist	Business	In Transit	Diplomat	Student	Other	Not Stated	Total
Africa													
Gabon	-	-	-	-	-	20	10	-	-	-	-	-	30
Other Africa	-	-	-	-	20	81	40	10	-	10	82	12	255
Asia													
Japan	10	130	10	1,602	42	3,697	30	60	20	10	865	112	6,588
India	60	150	2	222	372	477	80	-	10	-	458	20	1,851
China	30	20	60	192	40	642	80	40	80	10	400	-	1,594
Korea	-	-	-	150	10	420	10	-	-	-	120	10	720
Israel	-	-	-	70	-	160	-	-	20	-	60	-	310
Pakistan	-	20	-	30	80	20	40	-	-	-	60	-	250
Singapore	10	-	-	34	10	122	30	-	-	-	30	-	236
Taiwan	-	20	-	104	-	72	-	20	-	-	20	-	236
Sri Lanka	-	10	-	30	10	72	10	-	-	-	30	-	162
Bangladesh	20	-	10	30	-	20	10	-	-	-	70	-	160
Hong Kong	-	-	-	80	-	35	10	2	-	-	10	-	137
Malaysia	-	10	-	20	10	72	10	-	-	-	10	-	132
Thailand	-	-	-	20	10	52	10	10	-	-	20	-	122
Lebanon	-	10	-	-	10	30	-	-	-	-	10	10	70
Philippines	10	-	-	32	10	10	-	-	-	-	-	-	62
Saudi Arabia	-	-	-	-	-	20	-	-	-	-	41	-	61
Turkey	-	-	-	-	-	50	-	-	-	-	11	-	61
Indonesia	-	-	-	-	10	20	10	-	-	-	-	1	41
Kuwait	-	-	-	-	10	10	-	20	-	-	-	-	40
Other Asia	-	10	-	20	-	70	10	-	-	-	10	2	122
Europe													
United Kingdom	92	405	124	2,797	1,523	13,142	856	1,125	50	113	2,601	72	22,900
Germany	60	151	227	3,884	236	6,693	129	1,785	22	50	2,155	166	15,558
Netherlands	20	80	2	2,070	162	5,404	66	255	10	10	1,372	33	9,484
France	-	40	42	1,191	80	3,637	173	325	30	10	813	72	6,413
Italy	12	41	22	880	54	2,169	92	285	-	-	678	92	4,325

Table 4: Total Arrivals by country of Residence and Purpose of Entry – 2005 (cont'd)

Country of Residence	Returning Resident	Prospective Resident	Seeking Employment	Employment	Visitor	Holiday/Tourist	Business	In Transit	Diplomat	Student	Other	Not Stated	Total
Europe													
Spain	10	-	2	603	26	2,467	82	180	2	10	444	30	3,856
Switzerland	-	20	80	897	64	1,171	50	290	-	-	369	55	2,996
Belgium	1	20	-	312	75	1,158	26	122	-	-	423	22	2,159
Ireland	-	40	-	368	50	858	40	67	-	-	140	20	1,583
Sweden	-	60	-	326	70	610	30	104	-	-	298	-	1,498
Denmark	-	20	16	255	80	618	11	64	-	-	213	2	1,279
Austria	10	-	10	331	20	539	30	122	-	-	169	10	1,241
Norway	10	1	30	185	90	398	32	100	-	12	81	30	969
Russia	-	-	20	120	20	306	20	70	40	-	240	-	836
Portugal	10	10	10	160	50	265	10	104	-	-	62	40	721
Czechoslovakia	-	-	-	81	20	184	10	40	-	-	116	-	451
Poland	-	-	-	60	30	152	20	24	-	20	72	20	398
Finland	-	10	10	72	20	145	1	2	-	-	50	-	310
Greece	-	-	-	72	-	50	-	10	-	1	30	-	163
Yugoslavia	-	10	-	30	30	30	-	10	10	-	40	-	160
Hungary	-	-	-	20	-	91	-	-	-	-	-	-	111
Bulgaria	-	-	-	-	-	50	-	-	-	-	50	-	100
Slovakia	-	-	-	30	-	22	-	-	-	-	-	-	52
Ukraine	-	-	-	20	-	30	1	-	-	-	1	-	52
Luxembourg	-	-	-	20	-	20	-	10	-	-	2	-	52
Romania	-	-	-	-	-	41	-	-	-	-	-	10	51
Belarus	-	-	-	-	-	50	-	-	-	-	-	-	50
Estonia	-	-	-	-	-	40	-	-	-	-	2	-	42
Monaco	-	-	-	11	-	30	-	-	-	-	-	-	41
Lithuania	-	-	-	20	-	-	-	10	-	-	10	-	40
Croatia	-	-	-	20	-	-	10	-	-	-	-	-	30
Other Europe	-	-	-	20	-	30	-	-	-	-	10	-	60

Table 4: Total Arrivals by country of Residence and Purpose of Entry – 2005 (cont'd)

Country of Residence	Returning Resident	Prospective Resident	Seeking Employment	Employment	Visitor	Holiday/Tourist	Business	In Transit	Diplomat	Student	Other	Not Stated	Total
America													
USA	92	488	177	8,334	1,265	14,612	387	1,247	90	200	2,855	165	29,912
Canada	50	90	10	935	120	1,671	34	244	-	20	405	31	3,610
Argentina	-	-	-	20	-	123	-	-	-	-	60	-	203
Mexico	-	-	1	44	-	112	-	-	-	-	21	-	178
Brazil	-	10	-	10	10	90	10	-	-	-	20	-	150
Cuba	10	-	-	30	20	-	10	-	10	-	50	-	130
Chile	-	-	-	16	-	60	-	20	-	-	11	-	107
Other America	-	-	-	70	30	145	-	-	-	-	11	-	256
Oceania													
Australia	13	80	1	1,698	265	4,617	391	573	10	10	1,077	45	8,780
New Zealand	1	30	12	569	120	1,066	10	161	-	-	359	2	2,330
Not Stated	2,971	5,518	1,083	4,415	13,883	17,191	4,043	17,031	384	121	38,840	3,019	108,499
Total	231,584	66,650	12,453	67,427	420,288	313,658	83,844	260,382	4,729	2,675	499,786	24,551	1,988,027

Table 5: Total Arrivals By Country of Residence and Month of Arrival - 2005

Country of residence	January	February	March	April	May	June	July	August	September	October	November	December	Total
Africa													
South Africa	58,449	41,492	59,880	46,371	51,588	61,702	43,721	37,387	62,244	65,316	56,826	68,312	653,288
Zimbabwe	53,718	50,480	42,686	25,965	34,121	46,561	47,834	48,520	55,945	29,878	28,102	65,909	529,719
Botswana	38,487	22,838	27,616	19,196	26,142	23,069	22,186	22,708	26,163	28,034	20,492	22,488	299,419
Zambia	15,367	13,006	14,746	13,304	7,983	9,791	6,155	6,840	19,686	18,966	8,481	6,780	141,105
Namibia	9,142	5,787	8,444	7,636	11,379	6,777	6,388	4,321	7,785	10,654	6,796	13,692	98,801
Lesotho	106	320	590	271	194	304	312	403	300	540	272	410	4,022
Swaziland	300	80	392	340	324	494	120	341	374	591	220	310	3,886
Malawi	412	284	260	300	242	240	210	261	244	440	270	490	3,653
Kenya	340	260	140	222	140	102	150	213	244	210	140	252	2,413
Tanzania	161	106	130	144	112	181	122	282	120	280	75	100	1,813
Uganda	20	120	180	110	20	40	70	101	202	190	111	50	1,214
Mozambique	30	20	50	50	30	10	60	40	50	42	63	70	515
Angola	20	50	10	52	82	20	30	61	50	60	-	32	467
Nigeria	20	10	40	40	88	50	30	41	-	40	10	50	419
Mauritius	40	12	40	70	22	32	30	50	30	31	12	20	389
DRC	-	10	120	10	30	40	20	80	-	10	20	40	380
Ethiopia	20	20	40	10	10	10	20	32	20	80	30	52	344
Ghana	-	20	20	30	40	20	-	20	-	10	1	-	161
Madagascar	-	10	-	-	-	10	10	40	10	10	10	40	140
Libya	10	30	-	10	10	20	-	-	10	-	-	10	100
Egypt	-	20	20	20	-	10	-	10	-	10	-	-	90
Tunisia	-	-	-	-	-	30	-	40	-	10	-	-	80
Senegal	-	20	10	-	-	-	-	-	-	20	-	10	60
Reunion	-	-	-	-	2	10	30	10	-	-	-	-	52
Seychelles	-	-	-	10	10	-	10	1	-	20	-	-	51
Cameroon	-	10	-	-	-	10	-	20	-	-	-	-	40
Eritrea	10	-	-	-	-	-	10	-	-	-	-	10	30
Gabon	-	10	20	-	-	-	-	-	-	-	-	-	30
Other Africa	-	30	60	-	12	11	20	30	22	30	20	20	255

Table 5: Total Arrivals By Country of Residence and Month of Arrival – 2005 (cont'd)

Country of residence	January	February	March	April	May	June	July	August	September	October	November	December	Total
Asia													
Japan	400	200	351	290	612	246	160	463	1,380	1,842	420	224	6,588
India	141	110	138	150	281	130	100	201	130	160	90	220	1,851
China	170	80	160	91	230	110	152	101	80	130	220	70	1,594
Korea	10	100	70	20	20	50	70	90	50	180	20	40	720
Israel	-	40	10	60	10	30	40	20	20	-	60	20	310
Pakistan	10	20	-	20	30	40	10	10	40	40	-	30	250
Singapore	10	40	4	40	10	32	-	20	40	20	-	20	236
Taiwan	10	14	10	10	10	10	62	50	20	-	40	-	236
Sri Lanka	-	-	20	20	52	20	-	10	-	30	-	10	162
Bangladesh	20	-	40	20	-	20	-	20	-	30	10	-	160
Hong Kong	-	30	-	-	-	10	10	40	34	12	-	1	137
Malaysia	20	10	10	10	22	10	20	-	-	10	10	10	132
Thailand	-	50	20	-	12	10	-	-	-	10	20	-	122
Lebanon	-	10	-	10	10	-	-	10	20	-	-	10	70
Philippines	20	20	10	-	-	-	12	-	-	-	-	-	62
Saudi Arabia	-	10	-	-	-	20	20	11	-	-	-	-	61
Turkey	-	-	-	-	-	-	-	50	-	-	11	-	61
Indonesia	-	10	-	10	10	-	-	-	-	11	-	-	41
Kuwait	-	-	-	-	-	10	-	-	-	10	-	20	40
Other Asia	-	12	-	20	10	50	-	20	-	10	-	-	122
Europe													
United Kingdom	1,555	1,596	2,246	1,890	1,567	1,235	1,723	2,321	3,071	2,858	1,605	1,233	22,900
Germany	780	773	1,256	904	954	982	811	1,203	2,438	2,749	1,690	1,018	15,558
Netherlands	476	414	339	430	482	388	1,856	1,076	1,220	1,517	630	656	9,484
France	292	246	646	556	648	288	581	882	828	914	328	204	6,413
Italy	509	152	144	227	121	194	362	1,253	426	598	228	111	4,325
Spain	24	186	192	160	72	116	725	1,372	360	422	180	47	3,856
Switzerland	155	141	178	218	340	62	326	111	430	520	368	147	2,996
Belgium	183	132	100	244	101	124	325	130	232	305	212	71	2,159

Table 5: Total Arrivals By Country of Residence and Month of Arrival – 2005 (cont'd)

Country of residence	January	February	March	April	May	June	July	August	September	October	November	December	Total
Europe													
Ireland	90	68	218	122	40	130	177	133	130	214	160	101	1,583
Sweden	126	146	260	114	56	80	110	80	30	160	182	154	1,498
Denmark	129	293	130	44	82	70	121	41	90	140	84	55	1,279
Austria	44	150	70	20	30	94	91	155	174	282	101	30	1,241
Norway	60	124	142	72	20	60	92	60	40	134	93	72	969
Russia	230	40	30	20	62	50	60	10	110	50	134	40	836
Portugal	-	20	60	30	40	42	30	31	60	2	336	70	721
Czechoslovakia	12	2	-	52	-	10	10	20	100	193	42	10	451
Poland	20	60	20	60	10	52	-	50	70	50	6	-	398
Finland	20	36	10	22	20	30	-	20	60	60	10	22	310
Greece	1	-	10	42	40	-	10	30	-	10	10	10	163
Yugoslavia	60	-	10	-	-	-	70	-	10	-	-	10	160
Hungary	-	-	10	-	-	-	-	21	-	10	50	20	111
Bulgaria	20	-	-	40	-	10	-	20	10	-	-	-	100
Slovakia	-	-	30	2	-	-	-	-	20	-	-	-	52
Ukraine	22	-	-	-	-	-	-	10	-	20	-	-	52
Luxembourg	-	-	-	-	-	-	-	10	20	12	-	10	52
Romania	-	-	-	-	-	-	-	41	-	10	-	-	51
Belarus	-	-	-	-	-	20	-	-	-	-	-	30	50
Estonia	-	-	-	20	2	-	10	-	-	-	10	-	42
Monaco	-	-	-	-	-	-	10	20	-	10	-	1	41
Lithuania	-	-	-	-	-	-	10	-	20	10	-	-	40
Croatia	-	20	-	-	-	-	-	10	-	-	-	-	30
Other Europe	-	10	-	10	-	-	10	-	-	10	10	10	60
America													
USA	1,268	1,438	2,391	1,746	2,808	3,052	3,634	2,078	4,988	3,365	1,655	1,489	29,912
Canada	275	342	442	278	216	165	260	192	521	436	292	191	3,610
Argentina	-	-	20	10	10	10	11	20	52	50	10	10	203
Mexico	-	10	10	-	-	20	32	22	30	10	12	32	178
Brazil	10	10	20	10	-	20	10	30	-	-	-	40	150

Table 5: Total Arrivals By Country of Residence and Month of Arrival – 2005 (cont'd)

Country of residence	January	February	March	April	May	June	July	August	September	October	November	December	Total
America													
Cuba	-	-	10	30	-	10	-	-	-	10	70	-	130
Chile	-	21	20	32	10	-	-	-	-	-	10	14	107
Other America	-	8	20	30	40	20	81	1	32	13	10	1	256
Oceania													
Australia	676	692	674	661	521	526	598	451	1,626	1,149	608	598	8,780
New Zealand	142	230	152	134	238	180	144	280	329	206	110	185	2,330
Not Stated	3,551	9,146	11,647	9,593	3,194	9,913	7,361	8,584	7,604	13,665	12,944	11,297	108,499
Total	188,193	152,307	177,844	132,755	145,624	168,295	147,845	143,736	200,444	188,131	145,042	197,811	1,988,027

Table 6: Total Arrivals by Country of Residence and Border Post - 2005

Country of Residence	Ramatlabama	Pioneer	Ghanzi	Jwaneng	Bokspits	Boshoek	Tsabong	Kasane	Maitengwe
Africa									
South Africa	134,100	104,240	4	235	2,595	293	2,426	2,090	3,490
Zimbabwe	4,020	1,950	-	2	2	-	2	130	19,070
Botswana	33,350	34,350	-	33	242	16	406	980	590
Zambia	1,500	1,190	-	-	4	-	-	880	-
Namibia	5,720	22,160	-	1	81	-	36	17,940	20
Lesotho	950	340	-	-	-	-	9	-	-
Swaziland	270	750	-	-	6	-	-	-	-
Malawi	500	170	-	-	4	-	-	-	-
Kenya	90	60	-	-	-	-	-	-	-
Tanzania	30	-	-	-	4	-	4	-	-
Uganda	70	40	-	-	-	-	-	-	-
Mozambique	20	120	-	-	-	-	-	20	20
Angola	10	-	-	-	-	-	-	-	-
Nigeria	-	20	-	-	-	-	-	-	-
Mauritius	20	40	-	-	-	-	2	-	-
DRC	-	-	-	-	-	-	-	20	-
Ethiopia	-	-	-	-	-	-	-	-	-
Ghana	20	-	-	-	-	-	-	-	-
Madagascar	-	40	-	-	-	-	-	-	-
Libya	-	-	-	-	-	-	-	-	-
Egypt	-	-	-	-	-	-	-	-	-
Tunisia	-	-	-	-	-	-	-	-	-
Senegal	-	-	-	-	-	-	-	-	-
Reunion	-	-	-	-	-	-	-	-	-
Seychelles	-	-	-	-	-	-	-	-	-
Cameroon	-	-	-	-	-	-	-	-	-
Eritrea	-	-	-	-	-	-	-	-	-
Gabon	-	-	-	-	-	-	-	-	-
Other Africa	-	-	-	-	-	-	-	-	-

Table 6: Total Arrivals by Country of Residence and Border Post – 2005 (cont'd)

Country of Residence	Ramatlabama	Pioneer	Ghanzi	Jwaneng	Bokspits	Boshoek	Tsabong	Kasane	Maitengwe
Asia									
Japan	-	-	-	2	-	-	-	20	-
India	100	160	-	6	-	-	-	-	-
China	20	40	-	-	-	-	-	50	-
Korea	-	-	-	-	-	-	-	120	-
Israel	20	-	-	-	-	-	-	-	-
Pakistan	-	-	-	-	-	-	-	-	-
Singapore	-	40	-	-	-	-	-	-	-
Taiwan	-	-	-	-	-	-	-	-	-
Sri Lanka	-	-	-	-	-	-	-	20	-
Bangladesh	20	20	-	-	-	-	-	-	-
Hong Kong	-	-	-	-	2	-	-	-	-
Malaysia	-	-	-	-	-	-	-	-	-
Thailand	-	-	-	-	-	-	-	-	-
Lebanon	-	-	-	-	-	-	-	-	-
Philippines	-	-	-	-	-	-	-	-	-
Saudi Arabia	-	-	-	-	-	-	-	-	-
Turkey	-	-	-	-	-	-	-	-	-
Indonesia	-	-	-	-	-	-	-	-	-
Kuwait	-	20	-	-	-	-	-	-	-
Other Asia	-	-	-	-	-	-	-	-	-
Europe									
United Kingdom	490	550	-	4	17	-	4	380	-
Germany	220	710	8	-	90	-	32	970	-
Netherlands	60	180	-	-	18	-	-	180	-
France	30	150	-	1	2	-	2	180	-
Italy	40	340	-	-	169	-	36	160	-
Spain	-	170	-	-	-	-	2	80	-
Switzerland	80	40	-	-	10	-	1	180	-
Belgium	20	80	-	-	10	-	14	60	-
Ireland	40	80	-	-	-	-	2	40	-

Table 6: Total Arrivals by Country of Residence and Border Post – 2005 (cont'd)

Country of Residence	Ramatlabama	Pioneer	Ghanzi	Jwaneng	Bokspits	Boshoek	Tsabong	Kasane	Maitengwe
Europe									
Sweden	10	20	-	-	-	-	4	40	-
Denmark	30	20	-	-	-	-	-	140	-
Austria	20	10	-	-	2	-	-	90	-
Norway	-	-	-	-	-	-	2	120	-
Russia	40	60	-	-	-	-	-	20	-
Portugal	-	-	-	-	2	-	4	70	-
Czechoslovakia	-	40	-	-	2	-	-	-	-
Poland	20	30	-	-	-	-	-	20	-
Finland	-	-	-	-	-	-	-	40	-
Greece	20	-	-	-	-	-	-	-	-
Yugoslavia	20	20	-	-	-	-	-	-	-
Hungary	-	-	-	-	-	-	1	-	-
Bulgaria	-	20	-	-	-	-	-	-	-
Slovakia	-	-	-	-	-	-	-	-	-
Ukraine	-	-	-	-	-	-	-	-	-
Luxembourg	-	-	-	-	-	-	-	-	-
Romania	-	-	-	-	-	-	1	-	-
Belarus	-	-	-	-	-	-	-	-	-
Estonia	-	20	-	-	-	-	-	-	-
Monaco	-	-	-	-	-	-	-	-	-
Lithuania	-	-	-	-	-	-	-	-	-
Croatia	-	-	-	-	-	-	-	-	-
Other Europe	-	-	-	-	-	-	-	-	-
America									
USA	320	420	-	4	8	-	5	1,000	-
Canada	80	100	-	-	2	-	6	70	-
Argentina	-	-	-	-	-	-	-	-	-
Mexico	-	-	-	-	-	-	-	-	-
Brazil	-	-	-	-	-	-	-	-	-
Cuba	-	-	-	-	-	-	-	-	-

Table 6: Total Arrivals by Country of Residence and Border Post – 2005 (cont'd)

Country of Residence	Ramatlabama	Pioneer	Ghanzi	Jwaneng	Bokspits	Boshoek	Tsabong	Kasane	Maitengwe
America									
Chile	-	-	-	-	-	-	-	-	-
Other America	-	-	-	-	-	-	-	-	-
Oceania									
Australia	130	130	-	1	20	-	3	380	-
New Zealand	60	20	-	-	8	-	6	60	-
Not Stated	9,980	16,220	6	11	489	14	7	900	2,610
Total	192,540	185,180	18	300	3,789	323	3,017	27,450	25,800

Table 6: Total Arrivals by Country of Residence and Border Post – 2005 (cont'd)

Country of Residence	Matsiloje	Middlepits	Two rivers	Limpopo Valley	Dobe	Kwando	Total
Africa							
South Africa	6,880	3,028	3,167	455	146	60	653,288
Zimbabwe	19,120	4	4	45	48	327	529,719
Botswana	1,540	187	103	116	52	19	299,419
Zambia	-	2	2	2	2	2	141,105
Namibia	160	7	71	4	601	38	98,801
Lesotho	-	1	-	4	6	-	4,022
Swaziland	20	-	13	2	-	-	3,886
Malawi	-	2	-	2	-	-	3,653
Kenya	-	-	-	-	-	-	2,413
Tanzania	-	-	-	2	-	-	1,813
Uganda	-	-	-	-	-	-	1,214
Mozambique	-	-	-	-	-	-	515
Angola	-	-	-	2	2	-	467
Nigeria	-	-	-	8	-	-	419
Mauritius	-	-	-	2	-	-	389
DRC	-	-	-	-	-	-	380

Table 6: Total Arrivals by Country of Residence and Border Post – 2005 (cont'd)

Country of Residence	Matsiloje	Middlepits	Two rivers	Limpopo Valley	Dobe	Kwando	Total
Africa							
Ethiopia	-	-	-	2	-	-	344
Ghana	-	-	-	-	-	-	161
Madagascar	-	-	-	-	-	-	140
Libya	-	-	-	-	-	-	100
Egypt	-	-	-	-	-	-	90
Tunisia	-	-	-	-	-	-	80
Senegal	-	-	-	-	-	-	60
Reunion	-	-	-	2	-	-	52
Seychelles	-	-	-	-	-	-	51
Cameroon	-	-	-	-	-	-	40
Eritrea	-	-	-	-	-	-	30
Gabon	-	-	-	-	-	-	30
Other Africa	-	-	-	2	-	-	255
Asia							
Japan	-	-	-	6	2	6	6,588
India	10	-	-	10	-	-	1,851
China	-	-	-	-	-	-	1,594
Korea	-	-	-	-	-	-	720
Israel	-	-	-	-	-	-	310
Pakistan	-	-	-	-	-	-	250
Singapore	-	-	-	6	-	-	236
Taiwan	-	-	-	-	-	-	236
Sri Lanka	-	-	-	2	-	-	162
Bangladesh	-	-	-	-	-	-	160
Hong Kong	-	-	4	-	-	-	137
Malaysia	-	-	-	2	-	-	132
Thailand	-	-	-	2	-	-	122
Lebanon	-	-	-	-	-	-	70
Philippines	-	-	-	-	-	-	62
Saudi Arabia	-	-	-	-	-	-	61

Table 6: Total Arrivals by Country of Residence and Border Post – 2005 (cont'd)

Country of Residence	Matsiloje	Middlepits	Two rivers	Limpopo Valley	Dobe	Kwando	Total
Asia							
Turkey	-	-	-	-	-	-	61
Indonesia	-	-	-	-	-	-	41
Kuwait	-	-	-	-	-	-	40
Other Asia	-	-	-	-	-	-	122
Europe							
United Kingdom	-	3	33	257	68	10	22,900
Germany	-	3	209	54	140	42	15,558
Netherlands	-	-	26	53	40	20	9,484
France	10	3	36	8	10	2	6,413
Italy	-	-	112	11	18	-	4,325
Spain	-	-	-	4	10	-	3,856
Switzerland	-	-	32	44	44	7	2,996
Belgium	-	-	16	29	8	-	2,159
Ireland	-	-	6	6	-	-	1,583
Sweden	-	-	-	28	10	-	1,498
Denmark	-	-	2	8	2	-	1,279
Austria	-	3	7	-	4	6	1,241
Norway	-	-	-	-	6	-	969
Russia	-	-	-	-	-	-	836
Portugal	-	-	-	-	32	-	721
Czechoslovakia	-	-	8	2	2	-	451
Poland	10	-	6	2	-	-	398
Finland	-	-	-	2	2	-	310
Greece	-	-	-	-	-	-	163
Yugoslavia	-	-	-	-	-	-	160
Hungary	-	-	-	-	-	-	111
Bulgaria	-	-	-	-	-	-	100
Slovakia	-	-	-	-	-	-	52
Ukraine	-	-	-	-	-	-	52
Luxembourg	-	-	-	-	2	-	52

Table 6: Total Arrivals by Country of Residence and Border Post – 2005 (cont'd)

Country of Residence	Matsiloje	Middlepits	Two rivers	Limpopo Valley	Dobe	Kwando	Total
Europe							
Romania	-	-	-	-	-	-	51
Belarus	-	-	-	-	-	-	50
Estonia	-	-	-	-	-	-	42
Monaco	-	-	-	-	-	-	41
Lithuania	-	-	-	-	-	-	40
Croatia	-	-	-	-	-	-	30
Other Europe	-	-	-	-	-	-	60
America							
USA	-	6	40	306	252	1,876	29,912
Canada	20	-	8	68	12	7	3,610
Argentina	-	-	-	2	-	-	203
Mexico	-	-	-	2	2	-	178
Brazil	-	-	-	-	-	-	150
Cuba	-	-	-	-	-	-	130
Chile	-	-	-	-	4	-	107
Other America	-	-	-	-	2	-	256
Oceania							
Australia	-	-	12	6	31	-	8,780
New Zealand	-	-	-	-	-	-	2,330
Not Stated	1,900	648	447	71	161	75	108,499
Total	29,670	3,897	4,364	1,641	1,721	2,497	1,988,027

Table 7: Arrivals by border Post and Month of Arrival - 2005

Border Post	January	February	March	April	May	June	July	August	September	October	November	December	Total
Ramokgwebana road	63,070	53,890	45,220	20,220	34,440	49,370	51,750	54,670	51,840	18,200	26,300	65,280	534,250
Tlokweng	16,350	6,480	19,100	11,470	17,100	17,250	14,110	19,400	19,060	36,840	22,330	19,570	219,060
Ramatlabama	15,620	13,220	18,380	26,760	16,180	17,600	11,700	6,870	18,280	15,560	16,260	16,110	192,540
Pioneer	14,880	14,200	18,220	15,060	16,880	16,580	12,100	7,150	16,490	18,300	14,600	20,720	185,180
Martins Drift	13,640	12,240	17,640	3,340	15,420	18,440	4,100	9,050	18,480	16,760	19,380	20,850	169,340
Kazungula ferry	17,800	14,640	19,180	18,820	5,580	7,950	8,810	9,150	23,580	24,660	7,840	3,570	161,580
Kazungula road	5,810	4,530	5,950	5,530	4,570	4,880	4,900	7,960	14,500	10,140	3,040	6,070	77,880
Mamono	6,210	3,330	5,300	6,050	5,070	4,050	5,980	3,630	4,340	11,980	3,910	6,690	66,540
Ngoma	1,900	1,730	2,160	2,350	2,740	2,020	6,290	3,410	2,500	2,580	2,120	2,580	32,380
Ramotswa	2,640	2,690	2,910	2,260	2,520	2,350	2,820	1,550	2,590	2,430	2,930	3,020	30,710
Matsiloje	3,660	1,700	2,520	2,840	2,560	2,320	3,060	1,970	2,980	1,340	2,940	1,780	29,670
Kasane	2,500	1,980	2,500	2,140	2,840	2,540	2,580	680	2,920	2,600	2,580	1,590	27,450
Maitengwe	3,720	1,940	2,240	1,940	2,160	2,120	2,360	1,180	2,400	3,200	890	1,650	25,800
Phitshane.Molopo	5,960	4,300	700	880	640	4,940	600	3,080	780	900	780	620	24,180
Sikwane	1,220	950	1,590	1,250	1,130	1,100	1,520	1,380	1,520	1,390	2,190	3,250	18,490
Parrs Halt	1,030	960	1,720	1,410	1,230	1,490	1,750	1,650	1,410	1,250	1,130	3,230	18,260
Plaatjan	3,580	3,060	520	400	390	460	450	410	750	3,210	4,170	480	17,880
Mohembo	950	650	970	740	1,220	910	2,000	770	1,600	1,750	1,240	1,230	14,030
Pontsdrift	380	410	620	590	510	700	770	960	750	860	590	640	7,780
Bray	458	452	644	572	514	662	74	305	616	600	586	359	5,842
Two rivers	230	132	920	410	384	372	580	180	498	368	142	148	4,364
Middlepits	268	426	416	280	382	586	320	316	298	208	168	229	3,897
Bokspits	392	260	236	438	364	420	232	69	782	314	240	42	3,789
Tsabong	506	358	92	70	562	88	76	274	76	498	380	37	3,017
Kwando	102	188	320	49	49	224	286	175	423	407	148	126	2,497

Table 7: Arrivals by border Post and Month of Arrival - 2005

Border Post	January	February	March	April	May	June	July	August	September	October	November	December	Total
Pandamatenga	132	56	264	384	74	40	308	40	166	194	86	70	1,814
Dobe	146	92	62	202	346	110	200	127	74	118	118	126	1,721
Limpopo Valley	72	70	138	116	546	72	146	82	114	92	148	45	1,641
Zanzibar	269	264	47	283	309	43	36	45	41	37	38	52	1,464
Makopong	58	43	47	110	88	136	170	64	178	120	130	93	1,237
Boshhoek	54	38	50	14	17	18	-	5	22	14	54	37	323
Air													
Sir Seretse Khama	3,570	5,280	5,590	5,300	6,350	5,630	5,490	5,250	5,280	5,090	5,540	4,130	62,500
Maun Airport	570	690	1,030	60	1,950	2,100	1,810	1,450	4,480	5,550	1,560	12,990	34,240
Kasane airport	178	676	98	84	134	152	106	62	168	108	106	174	2,046
Francistown Airport	64	163	116	129	107	183	173	157	167	208	164	91	1,722
Sowa Airport	84	124	124	82	134	146	102	166	122	114	88	46	1,332
Orapa Airport	56	62	140	58	48	118	62	32	94	100	76	32	878
Selibe Phikwe	38	33	22	20	4	37	24	17	65	41	30	54	385
Jwaneng Airport	26	-	48	44	82	80	-	-	-	-	20	-	300
Ghanzi Airport	-	-	-	-	-	8	-	-	10	-	-	-	18
Total	188,193	152,307	177,844	132,755	145,624	168,295	147,845	143,736	200,444	188,131	145,042	197,811	1,988,027

Table 8: Total Arrivals by Arrival Month and Mode of travel - 2005

Arrival Month	Road	Air	Other	Not known	Total
January	183,527	4,619	27	20	188,193
February	144,711	7,506	90	-	152,307
March	169,353	7,345	1,066	80	177,844
April	126,293	6,442	20	-	132,755
May	136,752	8,862	10	-	145,624
June	159,197	8,388	508	202	168,295
July	139,236	7,641	946	22	147,845
August	136,952	6,750	23	11	143,736
September	189,410	10,680	318	36	200,444
October	180,312	7,709	80	30	188,131
November	136,645	7,728	48	621	145,042
December	193,199	4,590	10	12	197,811
Total	1,895,587	88,260	3,146	1,034	1,988,027
<i>Percent</i>	<i>95.4</i>	<i>4.4</i>	<i>0.2</i>	<i>0.1</i>	<i>100.0</i>

Table: 9 Total Arrivals by Age Group and Sex - 2005

Age Group	Male	Female	Total
0-4	30	30	60
5-9	743	712	1,455
10-14	3,509	2,888	6,397
15-19	24,958	24,286	49,244
20-24	98,049	85,853	183,902
25-29	167,519	128,652	296,171
30-34	202,335	132,730	335,065
35-39	179,110	107,789	286,899
40-44	148,130	81,714	229,844
45-49	130,279	71,715	201,994
50-54	98,053	49,277	147,330
55-59	66,559	36,624	103,183
60-64	38,002	23,851	61,853
65+	43,482	29,165	72,647
Not Stated	7,143	4,840	11,983
Total	1,207,901	780,126	1,988,027

Table 10: Total Arrivals by Country of Residence and Age Group - 2005

Country of Residence	0-4	5-9	10-14	15-19	20-24	25-29	30-34	35-39	40-44	45-49	50-54	55-59	60-64	65+	Not Stated	Total
Africa																
South Africa	30	675	2,598	17,419	42,773	64,725	88,045	90,275	88,104	82,370	64,293	47,507	27,908	32,000	4,566	653,288
Zimbabwe	-	150	631	10,767	83,982	123,340	115,251	77,962	41,671	33,099	20,753	9,870	4,129	5,559	2,555	529,719
Botswana	-	200	1,274	6,852	12,453	31,744	55,526	55,411	43,344	37,357	24,595	16,267	6,962	6,128	1,306	299,419
Zambia	-	90	272	3,594	16,780	31,446	28,876	21,535	15,218	11,104	5,053	3,325	1,372	1,470	970	141,105
Namibia	30	90	657	4,246	9,389	13,396	15,098	12,580	13,625	10,676	8,207	4,397	2,980	2,955	475	98,801
Lesotho	-	10	30	170	500	666	640	544	386	351	373	110	50	122	70	4,022
Swaziland	-	-	70	250	370	813	710	619	404	342	151	81	60	6	10	3,886
Malawi	-	-	10	40	252	672	642	542	421	500	370	94	20	80	10	3,653
Kenya	-	-	30	80	211	450	520	312	221	254	83	150	42	30	30	2,413
Tanzania	-	-	10	20	160	261	344	282	134	163	238	115	62	14	10	1,813
Uganda	-	-	-	30	250	380	152	150	120	30	71	21	-	10	-	1,214
Mozambique	-	-	11	60	10	30	90	30	122	20	80	30	22	10	-	515
Angola	-	-	30	-	-	20	72	70	81	102	62	10	10	10	-	467
Nigeria	-	-	-	-	10	50	30	93	86	50	60	10	30	-	-	419
Mauritius	-	-	2	30	20	32	50	1	62	80	32	50	-	30	-	389
DRC	-	-	-	20	30	20	30	110	10	80	40	20	10	10	-	380
Ethiopia	-	-	-	-	20	80	50	62	62	50	10	10	-	-	-	344
Ghana	-	-	-	-	1	10	10	40	50	-	10	10	20	10	-	161
Madagascar	-	-	20	-	20	30	20	30	10	10	-	-	-	-	-	140
Libya	-	-	-	10	-	-	30	-	10	20	10	10	10	-	-	100
Egypt	-	-	-	-	-	-	20	-	20	-	20	10	10	10	-	90
Tunisia	-	-	-	-	-	20	-	10	10	20	-	10	10	-	-	80
Senegal	-	-	-	10	-	10	-	30	10	-	-	-	-	-	-	60
Reunion	-	-	-	-	-	10	20	2	10	10	-	-	-	-	-	52
Seychelles	-	-	-	10	-	1	-	20	-	-	10	-	-	10	-	51
Cameroon	-	-	-	-	-	20	-	10	-	-	10	-	-	-	-	40
Eritrea	-	-	-	-	10	10	-	-	-	-	-	10	-	-	-	30
Gabon	-	-	-	-	-	-	-	-	-	10	-	20	-	-	-	30
Other Africa	-	-	-	20	20	40	30	20	33	42	20	10	20	-	-	255

Table 10: Total Arrivals by Country of Residence and Age Group – 2005 (cont'd)

Country of Residence	0-4	5-9	10-14	15-19	20-24	25-29	30-34	35-39	40-44	45-49	50-54	55-59	60-64	65+	Not Stated	Total
Asia																
Japan	-	20	-	20	120	340	512	442	238	235	211	663	1,062	2,725	-	6,588
India	-	-	10	70	160	283	252	132	180	145	160	164	154	131	10	1,851
China	-	-	-	30	90	60	150	241	270	190	203	210	50	100	-	1,594
Korea	-	-	-	10	20	60	60	40	20	60	90	130	150	60	20	720
Israel	-	-	10	20	10	30	20	-	40	40	30	50	10	50	-	310
Pakistan	-	-	-	10	60	40	50	40	-	-	20	10	-	10	10	250
Singapore	-	-	-	-	-	70	62	30	14	30	-	20	10	-	-	236
Taiwan	-	-	-	-	-	2	20	70	2	42	50	10	30	10	-	236
Sri Lanka	-	-	-	-	-	-	40	32	-	20	20	10	30	10	-	162
Bangladesh	-	-	10	20	20	30	10	20	20	30	-	-	-	-	-	160
Hong Kong	-	-	-	-	-	10	10	43	14	20	30	-	10	-	-	137
Malaysia	-	-	-	20	-	20	22	20	20	10	20	-	-	-	-	132
Thailand	-	-	-	40	-	32	-	10	10	10	-	20	-	-	-	122
Lebanon	-	-	-	-	10	10	10	-	30	-	10	-	-	-	-	70
Philippines	-	-	-	-	-	-	20	-	20	22	-	-	-	-	-	62
Saudi Arabia	-	-	-	-	-	-	10	-	11	-	10	-	20	10	-	61
Turkey	-	-	-	10	-	-	-	1	10	-	10	10	10	10	-	61
Indonesia	-	-	-	-	-	-	-	10	10	1	10	10	-	-	-	41
Kuwait	-	-	-	-	-	-	20	-	10	-	-	-	-	-	10	40
Other Asia	-	-	-	-	-	-	40	10	10	10	2	20	20	10	-	122
Europe																
United Kingdom	-	-	20	1,065	2,264	2,903	2,973	2,026	2,038	1,853	1,663	1,999	1,867	2,137	92	22,900
Germany	-	10	11	376	892	1,217	1,701	1,784	1,598	1,328	1,385	1,058	1,854	2,289	55	15,558
Netherlands	-	20	40	147	807	1,531	1,277	670	964	695	741	1,145	706	687	54	9,484
France	-	-	32	257	212	573	697	671	697	940	635	658	485	546	10	6,413
Italy	-	20	-	32	142	364	763	677	559	426	339	377	293	269	64	4,325
Spain	-	-	22	50	61	320	907	682	609	485	330	178	106	106	-	3,856
Switzerland	-	-	-	82	153	381	371	228	357	279	356	236	300	241	12	2,996
Belgium	-	-	10	107	79	370	207	231	340	233	204	154	103	111	10	2,159

Table 10: Total Arrivals by Country of Residence and Age Group – 2005 (cont'd)

Country of Residence	0-4	5-9	10-14	15-19	20-24	25-29	30-34	35-39	40-44	45-49	50-54	55-59	60-64	65+	Not Stated	Total
Europe																
Ireland	-	20	-	40	164	211	320	113	120	123	162	193	70	47	-	1,583
Sweden	-	-	10	92	90	174	122	166	112	184	108	118	180	140	2	1,498
Denmark	-	-	-	72	101	113	108	102	125	141	116	170	133	98	-	1,279
Austria	-	20	-	10	80	80	122	72	187	151	137	72	111	198	1	1,241
Norway	-	10	-	50	192	122	50	75	41	43	70	131	114	71	-	969
Russia	-	-	-	-	-	130	83	101	130	170	112	50	40	20	-	836
Portugal	-	-	-	10	10	86	61	38	64	104	110	34	82	110	12	721
Czechoslovakia	-	-	-	-	50	52	24	44	36	40	92	71	40	2	-	451
Poland	-	-	-	10	-	32	-	44	60	120	60	42	20	10	-	398
Finland	-	-	-	10	-	81	32	50	42	20	12	11	-	42	10	310
Greece	-	-	-	10	1	-	30	20	-	10	30	32	10	10	10	163
Yugoslavia	-	-	-	-	20	20	30	10	-	40	30	-	-	10	-	160
Hungary	-	-	-	-	-	-	30	30	21	-	20	-	10	-	-	111
Bulgaria	-	-	-	-	-	-	40	-	30	-	30	-	-	-	-	100
Slovakia	-	-	-	-	-	10	20	-	-	-	20	2	-	-	-	52
Ukraine	-	-	-	-	-	1	50	-	-	-	-	-	-	1	-	52
Luxembourg	-	-	-	-	-	-	10	30	-	-	-	-	2	10	-	52
Romania	-	-	-	10	-	10	-	1	-	-	20	-	-	10	-	51
Belarus	-	-	-	-	-	-	-	20	30	-	-	-	-	-	-	50
Estonia	-	-	-	-	-	10	-	-	-	-	-	12	20	-	-	42
Monaco	-	-	-	-	-	10	-	10	-	-	1	-	10	10	-	41
Lithuania	-	-	-	-	-	-	-	-	-	20	20	-	-	-	-	40
Croatia	-	-	-	-	-	-	-	-	-	20	-	-	10	-	-	30
Other Europe	-	-	-	10	10	-	10	-	10	-	10	10	-	-	-	60
America																
USA	-	15	115	736	2,032	2,038	2,051	2,107	1,805	2,330	2,807	3,251	4,073	6,401	151	29,912
Canada	-	20	-	84	172	474	326	282	295	367	318	408	365	479	20	3,610
Argentina	-	-	-	-	30	40	30	50	20	10	-	-	2	21	-	203
Mexico	-	-	-	-	40	11	21	22	-	-	13	21	20	30	-	178
Brazil	-	-	-	-	20	20	10	40	20	10	10	20	-	-	-	150

Table 10: Total Arrivals by Country of Residence and Age Group – 2005 (cont'd)

Country of Residence	0-4	5-9	10-14	15-19	20-24	25-29	30-34	35-39	40-44	45-49	50-54	55-59	60-64	65+	Not Stated	Total
America																
Cuba	-	-	-	-	-	20	-	20	30	10	20	20	10	-	-	130
Chile	-	-	10	-	4	-	10	1	-	10	2	20	30	20	-	107
Other America	-	-	-	13	20	20	11	13	10	42	45	62	-	20	-	256
Oceania																
Australia	-	-	22	206	983	1,358	1,137	656	650	700	725	937	652	752	2	8,780
New Zealand	-	-	-	32	302	416	284	216	158	94	152	194	210	272	-	2,330
Not Stated	-	85	430	1,855	7,220	13,710	13,583	13,716	13,533	13,391	10,998	8,023	4,642	5,887	1,426	108,499
Total	60	1,455	6,397	49,244	183,902	296,171	335,065	286,899	229,844	201,994	147,330	103,183	61,853	72,647	11,983	1,988,027

Table 11: Total Arrivals by Nationality and Age Group - 2005

Nationality	0-4	5-9	10-14	15-19	20-24	25-29	30-34	35-39	40-44	45-49	50-54	55-59	60-64	65+	Not Stated	Total
Africa																
South Africa	30	799	3,061	21,055	47,345	75,174	106,438	110,594	109,641	101,474	77,820	57,930	31,917	36,361	5,558	785,197
Zimbabwe	-	180	842	12,056	90,730	142,454	144,510	105,408	56,797	45,818	28,391	12,660	5,036	5,985	3,248	654,115
Zambia	-	90	483	4,464	19,484	37,114	36,427	28,691	20,738	15,348	7,044	4,072	1,448	1,420	1,180	178,003
Namibia	30	111	793	4,404	9,253	13,157	14,362	12,059	12,679	10,367	7,807	4,062	2,565	3,067	479	95,195
Malawi	-	-	100	171	820	1,304	2,174	1,628	1,431	1,400	853	250	180	230	30	10,571
Kenya	-	-	90	150	421	962	1,350	1,110	975	665	302	162	124	40	40	6,391
Lesotho	-	30	30	182	560	861	940	662	564	602	534	190	100	122	70	5,447
Swaziland	-	-	30	250	460	973	950	772	551	464	180	130	52	16	40	4,868
Tanzania	-	-	80	201	270	582	682	650	414	549	548	213	164	90	50	4,493
Uganda	-	10	-	50	440	680	480	350	480	520	371	150	61	10	-	3,602
Nigeria	-	20	20	60	110	110	450	446	356	410	283	10	40	-	10	2,325
Mauritius	-	-	12	20	177	102	121	135	464	190	212	90	30	31	-	1,584
Ghana	-	-	10	61	60	121	170	60	222	230	210	111	30	30	-	1,315
DRC	-	-	-	40	70	60	82	192	240	150	70	30	20	10	30	994
Ethiopia	-	-	-	30	60	130	120	190	114	80	60	71	30	10	-	895
Angola	-	-	30	-	10	40	50	120	101	142	70	20	30	20	-	633
Mozambique	-	-	1	-	31	60	70	22	50	70	51	10	40	-	-	405
Egypt	-	-	-	-	20	50	60	100	30	60	10	30	10	-	-	370
Cameroon	-	-	-	-	-	20	33	81	20	20	10	10	-	10	-	204
Madagascar	-	-	20	-	30	30	20	30	-	10	20	-	-	10	-	170
Libya	-	-	-	-	10	-	40	-	10	10	30	20	10	-	-	130
Sierra Leone	-	-	-	-	-	10	-	40	-	50	-	20	-	-	-	120
Rwanda	-	-	-	-	20	20	-	-	40	20	-	-	-	-	-	100
Somalia	-	-	-	-	-	20	20	20	20	-	-	20	-	-	-	100
Sudan	-	-	-	-	-	10	-	10	1	10	30	-	10	-	-	71
Senegal	-	-	-	10	-	-	-	20	10	20	10	-	-	-	-	70
Guinea	-	-	-	-	10	-	-	-	12	10	20	-	10	-	-	62
Eritrea	-	-	-	-	10	30	-	-	-	-	-	20	-	-	-	60
Reunion	-	-	-	-	-	-	20	20	-	20	-	-	-	-	-	60

Table 11: Total Arrivals by Nationality and Age Group – 2005 (cont'd)

Nationality	0-4	5-9	10-14	15-19	20-24	25-29	30-34	35-39	40-44	45-49	50-54	55-59	60-64	65+	Not Stated	Total
Africa																
Tunisia	-	-	-	-	10	20	-	-	-	10	10	-	-	-	-	50
Seychelles	-	-	-	-	-	1	12	-	-	-	20	-	1	10	-	44
Morocco	-	-	-	-	-	-	-	-	-	20	-	-	20	-	-	40
Benin	-	-	-	-	20	-	-	-	-	10	-	-	10	-	-	40
Comoros	-	-	-	-	-	-	20	-	10	-	-	-	-	10	-	40
Botswana	-	-	-	-	11	1	21	1	1	1	-	-	-	1	-	37
Burkina Faso	-	-	-	-	-	-	10	-	-	-	-	20	-	-	-	30
Liberia	-	-	-	-	-	20	-	-	10	-	-	-	-	-	-	30
Togo	-	-	-	-	-	-	-	-	-	-	30	-	-	-	-	30
Other Africa	-	-	-	-	20	50	50	20	71	102	40	20	20	1	-	394
Asia																
India	-	10	80	361	979	2,202	3,021	2,613	2,080	1,402	1,309	920	344	672	42	16,035
Japan	-	20	-	30	130	430	632	526	349	267	221	697	1,112	2,745	-	7,159
China	-	-	20	223	231	361	430	763	693	732	552	292	50	131	20	4,498
Pakistan	-	-	-	90	161	280	410	350	290	100	201	20	20	21	10	1,953
Sri Lanka	-	-	10	90	70	130	250	284	211	182	148	142	70	44	-	1,631
Bangladesh	-	-	10	30	90	350	420	384	130	60	10	20	10	-	-	1,514
Korea	-	10	-	60	50	40	110	130	50	100	90	140	130	60	70	1,040
Israel	-	-	10	20	42	30	40	20	50	120	134	90	20	70	-	646
Philippines	-	-	30	10	10	10	70	10	50	62	10	10	40	-	-	312
Singapore	-	-	-	-	-	90	40	50	10	40	50	10	10	-	-	300
Cyprus	-	-	-	-	60	-	-	40	40	-	50	10	31	-	-	231
Malaysia	-	-	-	20	10	40	30	20	20	10	20	22	-	20	-	212
Taiwan	-	-	-	-	-	-	10	50	2	32	40	30	30	-	-	194
Lebanon	-	-	-	-	10	60	30	-	10	30	40	-	10	-	-	190
Thailand	-	-	-	-	-	32	40	10	10	20	-	20	-	-	-	132
Turkey	-	-	-	10	-	-	-	14	10	30	-	10	30	10	-	114
Saudi Arabia	-	-	-	-	-	2	20	-	20	10	10	12	10	10	10	104
Mongolia	-	-	-	10	20	20	40	-	10	-	-	-	-	-	-	100

Table 11: Total Arrivals by Nationality and Age Group – 2005 (cont'd)

Nationality	0-4	5-9	10-14	15-19	20-24	25-29	30-34	35-39	40-44	45-49	50-54	55-59	60-64	65+	Not Stated	Total
Asia																
Iran	-	-	-	10	-	-	31	3	-	-	20	-	-	-	-	64
Indonesia	-	-	-	-	-	-	-	20	10	11	10	-	10	-	-	61
Iraq	-	-	-	-	-	20	-	-	-	-	10	-	10	-	-	40
Hong Kong	-	-	-	-	-	-	-	-	14	10	10	-	-	-	-	34
Georgia	-	-	-	-	-	-	10	20	-	-	-	-	-	-	-	30
Other Asia	-	-	-	-	-	-	40	10	30	60	12	30	50	-	-	232
Europe																
United Kingdom	-	-	111	1,744	2,834	3,489	4,412	4,286	5,335	5,787	5,319	5,728	4,556	4,914	186	48,701
Germany	-	20	42	423	1,070	1,640	1,966	2,380	2,343	2,002	2,256	1,760	2,552	3,104	69	21,627
Netherlands	-	20	50	142	933	1,676	1,342	827	1,165	904	1,009	1,711	1,166	1,169	126	12,240
France	-	-	33	278	292	783	909	956	1,247	993	873	914	650	718	31	8,677
Italy	-	20	6	32	264	440	867	901	858	552	514	545	444	510	58	6,011
Spain	-	-	32	90	101	332	1,063	711	734	547	348	202	144	104	10	4,418
Switzerland	-	-	40	52	187	376	433	232	439	274	397	359	379	404	11	3,583
Belgium	-	-	10	121	128	377	317	342	464	443	319	244	161	159	12	3,097
Ireland	-	20	6	70	192	415	390	237	245	423	375	293	223	117	10	3,016
Denmark	-	-	10	82	111	121	288	171	184	172	187	273	337	282	10	2,228
Portugal	-	-	10	60	100	157	193	188	158	346	459	148	172	130	32	2,153
Austria	-	20	-	30	140	100	152	154	218	287	165	352	191	328	1	2,138
Sweden	-	-	10	72	110	244	122	286	182	212	158	170	190	184	2	1,942
Norway	-	10	-	50	212	186	116	66	121	137	80	241	194	91	-	1,504
Russia	-	-	-	10	-	241	122	221	203	214	132	150	40	50	30	1,413
Yugoslavia	-	-	-	20	30	72	140	130	50	230	52	81	-	30	-	835
Czechoslovakia	-	10	-	1	70	112	72	104	90	60	92	41	80	34	-	766
Poland	-	-	-	20	-	42	70	54	101	170	100	33	50	20	-	660
Finland	-	-	-	30	10	91	84	50	107	60	32	41	-	42	10	557
Bulgaria	-	-	-	22	20	-	80	200	70	41	50	60	10	-	-	553
Greece	-	-	-	-	20	10	70	20	20	11	60	102	50	50	10	423
Hungary	-	-	-	-	-	-	30	30	31	12	20	20	30	-	-	173

Table 11: Total Arrivals by Nationality and Age Group – 2005 (cont'd)

Nationality	0-4	5-9	10-14	15-19	20-24	25-29	30-34	35-39	40-44	45-49	50-54	55-59	60-64	65+	Not Stated	Total
Europe																
Croatia	-	-	-	10	-	-	22	-	20	40	20	20	10	20	-	162
Romania	-	-	-	10	-	30	-	11	26	10	20	-	-	10	-	117
Ukraine	-	-	-	-	-	1	70	20	-	10	10	-	-	1	1	113
Slovakia	-	-	-	-	-	10	40	20	-	-	20	2	-	-	-	92
Belarus	-	-	-	-	-	-	-	20	30	10	-	-	-	-	-	60
Lithuania	-	-	-	10	-	-	-	-	-	10	30	-	-	-	-	50
Luxembourg	-	-	-	-	-	-	-	30	-	-	10	-	4	-	-	44
Estonia	-	-	-	-	-	10	-	-	-	-	-	12	20	-	-	42
Other Europe	-	-	-	-	20	10	10	30	50	10	41	42	31	-	-	244
America																
USA	-	35	135	974	2,264	2,677	2,363	2,239	2,179	2,904	3,475	3,927	4,228	6,782	240	34,422
Canada	-	20	20	124	230	596	421	441	554	507	586	674	502	531	20	5,226
Argentina	-	-	-	6	30	40	60	103	10	11	40	-	2	20	-	322
Jamaica	-	-	-	10	10	10	40	20	20	80	30	30	-	-	10	260
Cuba	-	-	-	-	-	20	30	20	50	10	40	30	10	-	-	210
Brazil	-	-	-	-	10	71	20	10	30	10	20	20	-	-	-	191
Mexico	-	-	10	-	40	11	21	20	-	-	13	21	-	10	-	146
Chile	-	-	10	-	4	-	10	1	-	30	12	-	20	-	-	87
Colombia	-	-	-	-	-	10	20	12	-	20	1	-	-	-	20	83
Trinidad	-	-	-	40	-	-	-	-	-	-	20	10	-	-	10	80
Ecuador	-	-	-	-	-	11	10	-	10	-	-	10	-	-	-	41
Other America	-	-	-	12	30	60	21	12	20	12	54	20	10	-	10	261
Oceania																
Australia	-	-	52	275	1,114	1,466	1,253	937	825	840	816	1,165	701	753	21	10,218
New Zealand	-	-	-	34	295	535	518	474	208	254	264	351	220	212	10	3,375
Other Oceania	-	-	-	2	-	-	-	10	-	-	-	-	-	-	-	12
Not Stated	-	-	48	220	706	1,436	1,542	1,175	1,306	1,219	828	585	531	601	146	10,343
Total	60	1,455	6,397	49,244	183,902	296,171	335,065	286,899	229,844	201,994	147,330	103,183	61,853	72,647	11,983	1,988,027

Table 12: Total Arrivals by Border Post and Purpose of Entry - 2005

Border Post	Returning Resident	Prospective Resident	Seeking Employment	Employment	Visitor	Holiday/Tourist	Business	In Transit	Diplomat	Student	Other	Not Stated	Total
Ramokgwebana road	65,150	23,900	1,290	7,760	254,470	54,170	9,890	17,900	650	310	97,120	1,640	534,250
Tlokweng Gate	41,640	8,610	1,100	5,760	28,490	33,690	19,600	10,080	890	450	62,810	5,940	219,060
Ramatlabama	23,530	8,130	1,160	2,980	36,830	29,100	12,670	15,890	740	260	56,150	5,100	192,540
Pioneer	22,270	4,510	2,320	4,100	15,560	29,890	11,150	47,490	220	160	46,480	1,030	185,180
Martins drift	18,770	2,670	1,830	5,660	9,800	26,110	5,660	50,100	380	60	48,060	240	169,340
Kazungula ferry	11,780	5,920	950	8,480	14,530	30,590	4,630	20,090	300	450	59,850	4,010	161,580
Kazungula road	6,030	1,630	740	10,100	5,420	25,050	2,540	10,830	270	190	13,200	1,880	77,880
Mamono	2,670	620	510	1,850	4,420	5,850	600	38,750	20	30	10,990	230	66,540
Ngoma	480	330	840	2,400	1,040	9,330	220	10,310	60	10	6,960	400	32,380
Ramotswa	8,790	1,460	60	520	4,930	4,140	1,230	770	20	40	8,610	140	30,710
Matsiloje	1,270	1,380	150	400	6,450	2,840	90	6,070	-	-	10,970	50	29,670
Kasane	850	210	400	1,130	940	2,690	630	8,170	20	60	11,110	1,240	27,450
Maitengwe	550	1,590	220	20	6,870	990	170	2,970	40	20	12,220	140	25,800
Phitshane Molopo	720	740	-	50	5,610	3,380	140	90	-	50	13,110	290	24,180
Sikwane	1,780	730	80	200	4,830	1,440	170	2,990	-	70	6,160	40	18,490
Parrs Halt	3,080	280	60	510	2,200	2,900	530	5,460	30	60	3,140	10	18,260
Plaatjan	2,460	490	10	740	3,320	3,570	440	220	10	20	5,640	960	17,880
Mohembo	260	280	60	2,300	1,300	6,340	120	690	-	40	2,520	120	14,030
Ponts drift	600	130	40	1,220	540	3,570	130	100	20	10	1,420	-	7,780
Bray	1,442	109	18	181	1,070	701	171	93	4	4	1,803	246	5,842
Two rivers	84	49	86	324	193	1,070	26	759	8	-	1,651	114	4,364
Middlepits	115	142	8	58	1,453	467	69	31	15	-	1,528	11	3,897
Bokspits	168	102	36	205	550	839	26	246	2	2	1,492	121	3,789
Tsabong	331	18	9	44	893	838	179	29	8	4	614	50	3,017
Kwando	14	33	1	119	87	1,889	9	51	1	-	210	83	2,497
Pandamatenga	217	26	51	227	83	520	24	328	-	-	309	29	1,814
Dobe	45	45	14	184	277	524	18	60	12	2	431	109	1,721
Limpopo Valley	100	16	4	332	33	839	104	6	10	-	196	1	1,641
Zanzibar	457	29	4	36	139	299	52	74	1	-	368	5	1,464

Table 12: Total Arrivals by Border Post and Purpose of Entry - 2005

Border Post	Returning Resident	Prospective Resident	Seeking Employment	Employment	Visitor	Holiday/Tourist	Business	In Transit	Diplomat	Student	Other	Not Stated	Total
Makopong	58	18	5	21	423	294	57	27	1	1	325	7	1,237
Boshoek	9	2	2	7	29	17	185	10	-	-	60	2	323
Sir Seretse Khama Air	13,470	1,480	240	3,090	4,570	18,140	10,860	420	930	340	8,900	60	62,500
Maun Airport	1,320	930	120	5,820	2,750	9,420	380	9,070	60	20	4,230	120	34,240
Kasane Airport	261	3	24	493	29	722	69	153	4	6	264	18	2,046
Francistown Airport	176	18	8	58	42	658	341	32	1	1	357	30	1,722
Sowa Airport	371	17	1	15	61	346	291	4	-	1	211	14	1,332
Orapa Airport	140	1	-	16	25	264	220	11	-	4	195	2	878
Selebi Phikwe Airport	102	1	-	5	11	95	63	5	2	-	94	7	385
Jwaneng Airport	24	1	2	6	20	68	86	3	-	-	28	62	300
Ghanzi Airport	-	-	-	6	-	8	4	-	-	-	-	-	18
Total	231,584	66,650	12,453	67,427	420,288	313,658	83,844	260,382	4,729	2,675	499,786	24,551	1,988,027

Table 13: Total Arrivals by Month and purpose of Entry - 2005

Month	Returning Resident	Prospective Resident	Seeking Employment	Employment	Visitor	Holiday/Tourist	Business	In Transit	Diplomat	Student	Other	Not Stated	Total
Male													
January	21,204	1,302	251	1,816	3,588	16,103	4,468	9,939	86	91	54,430	61	113,339
February	14,925	2,454	875	2,205	19,877	13,360	5,849	13,452	148	161	16,747	22	90,075
March	10,603	3,706	2,493	5,004	19,260	16,217	6,712	15,662	317	272	27,623	612	108,481
April	7,707	1,466	320	1,340	14,332	24,758	6,428	14,296	154	120	11,247	341	82,509
May	14,958	1,882	541	2,663	15,151	11,832	6,120	10,261	158	62	27,901	233	91,762
June	12,343	3,001	1,396	1,938	21,521	19,538	6,979	15,018	162	232	22,098	301	104,527
July	10,742	2,550	236	2,584	18,350	17,811	4,685	11,972	160	140	16,742	26	85,998
August	12,448	2,068	434	3,381	17,896	12,525	6,972	11,141	523	141	12,608	2,220	82,357
September	13,156	2,397	216	5,560	6,869	22,144	5,416	19,988	192	180	38,860	200	115,178
October	12,244	4,639	420	5,903	15,537	18,491	7,502	24,593	210	90	33,307	142	123,078
November	7,987	3,136	723	3,680	13,151	12,032	6,797	13,361	730	100	22,613	10,523	94,833
December	11,453	5,125	1,137	3,479	23,972	11,491	4,411	29,533	143	80	24,859	81	115,764
Female													
January	13,227	642	120	827	2,525	14,801	460	4,525	114	93	37,478	42	74,854
February	6,717	3,212	298	1,805	27,199	5,446	907	3,776	72	110	12,633	57	62,232
March	5,975	3,783	782	3,333	23,105	7,787	994	5,978	236	196	16,820	374	69,363
April	4,334	1,331	206	706	17,621	12,567	850	5,776	151	72	6,514	118	50,246
May	7,581	2,120	184	1,699	19,139	4,838	751	4,699	94	62	12,541	154	53,862
June	5,761	2,940	590	1,358	25,590	9,580	882	5,618	80	30	11,152	187	63,768
July	5,584	2,596	132	1,515	23,579	10,941	802	4,377	90	130	11,979	122	61,847
August	6,716	2,180	234	2,337	26,631	8,035	2,187	3,888	212	140	7,122	1,697	61,379
September	8,517	1,774	57	4,866	6,017	24,663	959	6,766	102	30	31,442	73	85,266
October	6,407	3,840	197	4,534	15,061	8,622	1,012	7,191	144	62	17,795	188	65,053
November	4,473	2,775	190	2,576	13,474	4,646	844	3,747	361	50	10,334	6,739	50,209
December	6,522	5,731	421	2,318	30,843	5,430	857	14,825	90	31	14,941	38	82,047
Total	231,584	66,650	12,453	67,427	420,288	313,658	83,844	260,382	4,729	2,675	499,786	24,551	1,988,027
<i>Percent</i>	<i>11.6</i>	<i>3.4</i>	<i>0.6</i>	<i>3.4</i>	<i>21.1</i>	<i>15.8</i>	<i>4.2</i>	<i>13.1</i>	<i>0.2</i>	<i>0.1</i>	<i>25.1</i>	<i>1.2</i>	<i>100.0</i>

Table 14: Total Arrivals by nationality and Purpose of Entry - 2005

Nationality	Returning Resident	Prospective Resident	Seeking Employment	Employment	Visitor	Holiday/Tourist	Business	In Transit	Diplomat	Student	Other	Not Stated	Total
Africa													
South Africa	77,129	24,786	5,760	19,922	104,704	144,862	56,133	106,186	2,014	673	230,317	12,711	785,197
Zimbabwe	81,339	28,493	2,069	9,515	273,850	63,645	13,040	44,289	923	452	133,128	3,372	654,115
Zambia	19,307	6,095	1,513	1,131	17,501	13,772	5,121	43,757	360	370	65,034	4,042	178,003
Namibia	1,491	1,515	1,582	787	7,874	4,823	1,352	49,365	160	102	24,768	1,376	95,195
Malawi	3,069	470	60	180	1,902	575	392	1,231	60	40	2,482	110	10,571
Kenya	2,597	402	20	183	903	401	244	530	-	60	980	71	6,391
Lesotho	550	380	30	121	1,037	573	242	332	90	130	1,822	140	5,447
Swaziland	462	190	40	330	850	830	502	355	10	90	1,179	30	4,868
Tanzania	1,871	112	-	140	638	330	143	320	62	11	786	80	4,493
Uganda	1,171	350	30	60	510	270	70	240	-	20	811	70	3,602
Nigeria	1,064	50	-	92	132	262	30	90	40	20	535	10	2,325
Mauritius	727	80	12	50	54	161	54	1	10	-	415	20	1,584
Ghana	764	40	10	40	30	70	100	20	20	20	181	20	1,315
DRC	284	40	-	60	110	100	50	40	20	-	290	-	994
Ethiopia	421	90	-	50	60	72	30	-	-	20	112	40	895
Angola	90	10	-	10	40	71	70	70	52	10	210	-	633
Mozambique	73	-	-	10	101	11	30	40	-	-	140	-	405
Egypt	100	20	-	-	-	110	10	-	-	-	130	-	370
Cameroon	62	10	-	-	30	42	-	10	-	-	50	-	204
Madagascar	-	-	-	-	10	40	-	-	40	10	70	-	170
Libya	10	-	-	10	30	-	10	-	10	-	60	-	130
Sierra Leone	40	-	-	-	10	-	10	10	-	-	40	10	120
Rwanda	30	-	-	-	30	10	10	-	-	-	20	-	100
Somalia	-	-	-	-	-	20	-	60	-	-	20	-	100
Sudan	20	-	-	-	-	10	-	-	-	-	31	10	71
Senegal	-	-	-	10	10	30	10	-	-	-	10	-	70
Guinea	42	-	-	-	10	-	-	-	-	-	10	-	62
Eritrea	30	-	-	-	10	10	-	-	-	10	-	-	60
Reunion	20	10	10	-	10	10	-	-	-	-	-	-	60

Table 14: Total Arrivals by nationality and Purpose of Entry – 2005 (cont'd)

Nationality	Returning Resident	Prospective Resident	Seeking Employment	Employment	Visitor	Holiday/Tourist	Business	In Transit	Diplomat	Student	Other	Not Stated	Total
Africa													
Tunisia	-	-	-	-	-	10	10	-	-	-	30	-	50
Seychelles	-	-	-	30	-	10	-	-	-	-	4	-	44
Morocco	-	-	-	20	-	20	-	-	-	-	-	-	40
Benin	-	-	-	20	-	-	-	-	-	-	20	-	40
Comoros	10	-	-	-	-	-	-	-	-	-	30	-	40
Botswana	5	-	-	-	31	-	-	-	-	-	1	-	37
Burkina Faso	-	10	-	-	-	10	10	-	-	-	-	-	30
Liberia	10	-	-	-	-	-	-	-	-	10	10	-	30
Togo	-	-	-	-	-	-	-	20	10	-	-	-	30
Other Africa	160	20	-	10	20	41	30	50	-	-	61	2	394
Asia													
India	9,378	316	42	438	562	896	144	50	90	20	3,809	290	16,035
Japan	60	140	10	1,692	62	4,031	42	60	30	10	878	144	7,159
China	1,238	20	40	312	140	812	152	70	100	30	1,464	120	4,498
Pakistan	940	30	-	40	110	91	60	30	-	-	602	50	1,953
Sri Lanka	1,001	40	-	142	40	113	20	-	-	-	245	30	1,631
Bangladesh	474	10	10	50	50	40	10	10	-	-	750	110	1,514
Korea	180	-	-	150	10	400	10	-	-	-	280	10	1,040
Israel	122	-	-	72	-	220	10	-	20	-	202	-	646
Philippines	140	-	-	62	10	30	-	-	-	10	60	-	312
Singapore	80	-	-	20	10	110	30	-	-	-	50	-	300
Cyprus	141	-	-	-	20	-	10	20	-	-	40	-	231
Malaysia	50	10	-	-	30	81	20	10	-	-	11	-	212
Taiwan	20	20	-	74	-	40	-	-	-	-	20	20	194
Lebanon	90	10	-	-	10	30	30	-	-	-	20	-	190
Thailand	10	-	-	-	10	32	20	10	-	-	50	-	132
Turkey	10	-	-	10	-	60	-	-	-	-	34	-	114
Saudi Arabia	-	10	-	-	14	40	-	-	10	-	30	-	104
Mongolia	20	-	-	-	60	-	10	-	-	-	10	-	100

Table 14: Total Arrivals by nationality and Purpose of Entry – 2005 (cont'd)

Nationality	Returning Resident	Prospective Resident	Seeking Employment	Employment	Visitor	Holiday/Tourist	Business	In Transit	Diplomat	Student	Other	Not Stated	Total
Asia													
Iran	-	-	-	10	10	20	3	-	-	-	21	-	64
Indonesia	30	-	-	-	10	10	-	-	-	-	10	1	61
Iraq	10	-	-	-	-	-	-	-	-	-	30	-	40
Hong Kong	-	10	-	10	-	14	-	-	-	-	-	-	34
Georgia	-	-	-	-	-	30	-	-	-	-	-	-	30
Other Asia	40	10	-	20	-	70	10	20	-	-	40	22	232
America													
USA	2,397	518	209	8,785	1,453	15,243	506	1,466	150	210	3,280	205	34,422
Canada	830	90	20	1,033	180	2,009	93	298	-	20	632	21	5,226
Argentina	116	-	10	20	-	104	-	10	-	-	62	-	322
Jamaica	80	20	-	20	30	30	-	-	-	-	70	10	260
Cuba	40	-	-	50	20	10	10	10	10	-	60	-	210
Brazil	30	10	-	10	20	61	20	-	-	-	40	-	191
Mexico	-	-	1	62	-	72	-	-	-	-	11	-	146
Chile	-	-	-	16	-	40	-	-	-	-	31	-	87
Colombia	10	-	-	10	-	63	-	-	-	-	-	-	83
Trinidad	20	-	-	-	40	-	-	-	-	-	20	-	80
Ecuador	-	-	-	1	-	40	-	-	-	-	-	-	41
Other America	40	-	-	70	30	70	10	20	-	-	21	-	261
Europe													
United Kingdom	12,268	841	204	3,774	2,690	17,034	2,710	2,731	142	151	5,983	173	48,701
Germany	1,529	181	353	4,657	429	8,151	292	2,885	32	41	2,869	208	21,627
Netherlands	625	200	34	2,690	204	5,954	108	532	12	11	1,816	54	12,240
France	416	20	31	1,557	190	4,550	195	362	60	22	1,172	102	8,677
Italy	454	40	34	1,028	156	2,684	93	402	10	-	998	112	6,011
Spain	150	10	2	656	36	2,658	112	212	20	10	522	30	4,418
Switzerland	250	60	72	926	74	1,342	40	377	-	20	387	35	3,583
Belgium	196	50	32	481	86	1,375	82	153	10	-	610	22	3,097
Ireland	640	62	10	440	80	1,201	86	187	-	-	268	42	3,016

Table 14: Total Arrivals by nationality and Purpose of Entry – 2005 (cont'd)

Nationality	Returning Resident	Prospective Resident	Seeking Employment	Employment	Visitor	Holiday/Tourist	Business	In Transit	Diplomat	Student	Other	Not Stated	Total
Europe													
Denmark	460	31	18	335	120	754	30	119	10	-	349	2	2,228
Portugal	425	40	10	202	170	458	70	236	-	-	472	70	2,153
Austria	230	30	40	357	60	795	40	245	-	-	311	30	2,138
Sweden	120	60	-	406	80	680	60	164	10	-	342	20	1,942
Norway	222	2	30	269	110	514	22	120	-	22	153	40	1,504
Russia	91	-	30	200	62	329	31	250	40	-	330	50	1,413
Yugoslavia	411	20	-	40	70	53	10	21	10	-	180	20	835
Czechoslovakia	110	-	-	101	21	222	10	42	-	-	260	-	766
Poland	100	-	-	110	40	212	30	24	-	20	104	20	660
Finland	91	10	10	85	30	205	1	24	10	-	91	-	557
Bulgaria	150	-	-	30	-	121	10	20	-	-	212	10	553
Greece	60	-	-	62	10	161	40	30	-	-	60	-	423
Hungary	-	-	-	62	-	111	-	-	-	-	-	-	173
Croatia	72	10	-	20	20	-	10	-	-	-	10	20	162
Romania	30	-	-	-	20	11	2	-	-	-	34	20	117
Ukraine	10	-	-	20	10	50	1	-	-	-	22	-	113
Slovakia	-	-	-	30	-	32	10	-	-	-	20	-	92
Belarus	-	-	-	-	-	50	-	-	-	-	10	-	60
Lithuania	-	-	-	30	-	10	-	-	-	-	10	-	50
Luxembourg	-	-	-	22	-	10	-	10	-	-	2	-	44
Estonia	-	-	-	-	-	40	-	-	-	-	2	-	42
Other Europe	30	-	1	10	30	132	-	-	-	-	41	-	244
Oceania													
Australia	806	60	1	1,709	253	4,765	482	679	20	10	1,376	57	10,218
New Zealand	459	40	22	674	90	1,383	62	162	12	-	467	4	3,375
Other Oceania	10	-	-	-	-	-	-	-	-	-	2	-	12
Not Stated	624	446	41	484	1,719	1,498	282	1,295	40	20	3,631	263	10,343
Total	231,584	66,650	12,453	67,427	420,288	313,658	83,844	260,382	4,729	2,675	499,786	24,551	1,988,027

Table 15: Total Arrivals by Month and Quarter for years 1995 - 2005

Month	1995	1996	1997	1998	1999	2000	2001	2002	2003	2004	2005
January	84,402	96,035	91,792	116,405	156,168	177,314	158,245	164,526	165,224	178,461	188,193
February	59,266	82,118	78,599	94,267	110,762	124,349	116,630	135,340	146,459	151,140	152,307
March	81,556	85,655	82,291	107,932	117,392	194,500	134,999	154,379	160,986	160,143	177,844
1 st Quarter	225,224	263,808	252,682	318,604	384,322	496,163	409,874	454,245	472,669	489,744	518,344
April	85,954	97,646	102,862	128,940	184,780	145,192	135,026	158,707	168,918	173,633	132,755
May	82,058	86,965	112,875	117,388	126,966	160,500	135,965	149,792	164,901	160,701	145,624
June	88,612	77,550	95,998	105,876	131,150	205,696	145,543	152,151	168,511	155,681	168,295
2 nd Quarter	256,624	262,161	311,735	352,204	442,896	511,388	416,534	460,650	502,330	490,015	446,674
July	90,608	97,475	111,708	135,480	144,903	301,203	136,113	166,001	184,865	175,194	147,845
August	79,752	96,402	118,099	134,571	101,734	143,945	159,270	169,209	185,390	178,002	143,736
September	77,096	95,225	104,471	106,102	140,298	185,146	158,513	156,119	174,374	164,467	200,444
3 rd Quarter	247,456	289,102	334,278	376,153	386,935	630,294	453,896	491,329	544,629	517,663	492,025
October	84,756	89,763	76,467	97,328	158,229	188,457	153,963	163,895	170,984	170,299	188,131
November	90,049	80,294	75,885	96,070	104,362	138,095	117,820	159,823	179,793	154,557	145,042
December	106,948	85,993	111,727	111,439	161,205	180,973	179,234	187,877	196,114	154,471	197,811
4 th Quarter	281,753	256,050	264,079	304,837	423,796	507,525	451,017	511,595	546,891	479,327	530,984
Total	1,011,057	1,071,121	1,162,774	1,351,798	1,637,949	2,145,370	1,731,321	1,917,819	2,066,519	1,976,749	1,988,027

Table 16: Total Departures by Country of Residence and sex - 2005

Country of Residence	Male	Female	Total
Africa			
Zimbabwe	260,993	321,627	582,620
Republic of South Africa	384,399	148,296	532,695
Botswana	199,112	99,554	298,666
Zambia	63,095	39,711	102,806
Namibia	55,437	26,376	81,813
Lesotho	1,892	2,116	4,008
Malawi	2,756	823	3,579
Swaziland	2,249	1,040	3,289
Kenya	1,361	658	2,019
Tanzania	1,038	394	1,432
Mozambique	741	403	1,144
Uganda	430	190	620
Mauritius	346	194	540
Angola	297	131	428
Nigeria	312	81	393
Democratic Republic of Congo	271	92	363
Ethiopia	111	80	191
Ghana	140	50	190
Egypt	50	40	90
Tunisia	60	20	80
Madagascar	30	40	70
Cameroon	60	-	60
Sudan	52	-	52
Rwanda	20	20	40
Benin	30	-	30
Burkina Faso	20	10	30
Senegal	30	-	30
Seychelles	20	10	30
Other Africa	192	31	223
America			
United States of America	13,191	14,868	28,059
Canada	1,687	1,660	3,347
Mexico	148	137	285
Brazil	111	33	144
Argentina	41	61	102
Cuba	10	71	81
Belgium	75	2	77

Table 16: Total Departures by Country of Residence and sex - 2005 (cont'd).

Country of Residence	Male	Female	Total
America			
Jamaica	20	40	60
Colombia	40	20	60
Costa Rica	11	20	31
Bermuda	10	20	30
Ecuador	10	20	30
Other America	172	110	282
Asia			
Japan	3,416	5,527	8,943
India	1,157	473	1,630
China	755	287	1,042
Korea	264	396	660
Israel	214	112	326
Singapore	153	124	277
Taiwan	170	90	260
Hong Kong	82	104	186
Malaysia	112	70	182
Sri Lanka	111	20	131
Pakistan	90	40	130
Turkey	20	100	120
Thailand	70	40	110
Bangladesh	70	-	70
Philippines	20	40	60
Saudi Arabia	50	-	50
Iran	30	10	40
Cyprus	30	-	30
Other Asia	303	240	543
Europe			
United Kingdom	10,876	10,942	21,818
Germany	7,924	7,188	15,112
Netherlands	4,373	4,757	9,130
France	3,350	2,957	6,307
Italy	2,115	2,180	4,295
Spain	1,676	1,723	3,399
Switzerland	1,601	1,545	3,146
Belgium	1,376	1,153	2,529
Austria	818	670	1,488
Denmark	735	747	1,482
Sweden	715	657	1,372

Table 1: Total Departures by Country of Residence and sex - 2005 (cont'd).

Country of Residence	Male	Female	Total
Europe			
Ireland	605	656	1,261
Norway	445	700	1,145
Russia	431	321	752
Portugal	236	232	468
Czechoslovakia	221	198	419
Poland	173	135	308
Finland	117	190	307
Greece	43	145	188
Yugoslavia	81	80	161
Hungary	61	51	112
Slovakia	30	70	100
Luxembourg	60	40	100
Bulgaria	40	12	52
Ukraine	12	40	52
Romania	20	20	40
Latvia	-	40	40
Other Europe	44	113	157
Oceania			
Australia	3,829	3,873	7,702
New Zealand	867	894	1,761
Papua New Guinea	-	10	10
Other Oceania	40	10	50
Not Stated	80902	36581	117483
Total	1,122,003	745,652	1,867,655
<i>Percent</i>	<i>60</i>	<i>40</i>	<i>100</i>

Table 17: Total Departure By Country of Residence and Age Group - 2005

Country of Residence	0-4	5-9	10-14	15-19	20-24	25-29	30-34	35-39	40-44	45-49	50-54	55-59	60-64	65+	Not Stated	Total
Africa																
Zimbabwe	130	251	812	15,289	93,618	135,377	124,570	86,829	45,085	35,329	22,042	10,123	4,604	5,376	3,185	582,620
South Africa	239	652	1,972	14,913	34,705	53,360	71,355	76,776	69,912	66,787	52,484	36,425	22,232	26,877	4,006	532,695
Botswana	61	419	1,521	7,097	12,536	32,532	56,184	54,384	42,488	36,465	25,568	15,784	6,747	5,670	1,210	298,666
Zambia	-	50	267	2,294	11,893	21,953	21,510	16,159	11,731	8,296	3,894	1,944	1,094	1,010	711	102,806
Namibia	20	51	510	3,943	6,981	9,934	12,136	11,389	11,003	9,154	6,836	4,434	2,190	2,879	353	81,813
Lesotho	-	-	40	121	553	501	663	602	463	334	331	170	70	130	30	4,008
Malawi	-	-	20	52	250	531	532	592	550	370	361	151	50	90	30	3,579
Swaziland	10	-	10	260	350	531	570	529	404	231	161	90	42	71	30	3,289
Kenya	-	-	-	52	201	223	431	203	270	282	185	61	51	50	10	2,019
Tanzania	-	-	-	51	91	162	243	195	90	202	211	134	32	20	1	1,432
Mozambique	-	-	10	50	40	140	133	111	160	230	170	40	40	20	-	1,144
Uganda	-	-	-	-	80	120	100	100	60	90	50	10	10	-	-	620
Mauritius	-	-	30	-	21	11	62	101	62	82	40	50	50	21	10	540
Angola	-	10	10	11	-	30	61	50	61	62	83	40	-	10	-	428
Nigeria	10	-	-	-	-	10	21	70	72	90	70	40	-	10	-	393
DRC	-	-	-	20	20	82	40	50	40	41	20	20	30	-	-	363
Ethiopia	-	-	-	-	-	-	41	10	50	50	-	20	20	-	-	191
Ghana	-	-	-	-	-	20	30	10	10	10	40	30	20	20	-	190
Egypt	-	-	10	-	-	10	30	-	-	30	10	-	-	-	-	90
Tunisia	-	-	-	-	-	-	-	-	10	30	30	10	-	-	-	80
Madagascar	-	-	-	-	-	-	10	30	10	20	-	-	-	-	-	70
Cameroon	-	-	-	-	-	-	30	-	10	10	-	10	-	-	-	60
Sudan	-	-	-	-	-	-	-	10	-	2	20	10	10	-	-	52
Rwanda	-	-	-	-	-	10	10	-	-	-	10	-	-	-	10	40
Benin	-	-	-	-	-	-	-	10	-	10	-	10	-	-	-	30
Burkina Faso	-	-	-	-	-	10	-	-	-	10	-	10	-	-	-	30
Senegal	-	-	-	-	-	-	-	-	10	10	-	-	10	-	-	30

Table 17: Total Departure By Country of Residence and Age Group – 2005 (cont'd).

Country of Residence	0-4	5-9	10-14	15-19	20-24	25-29	30-34	35-39	40-44	45-49	50-54	55-59	60-64	65+	Not Stated	Total
Africa																
Seychelles	-	-	-	-	-	20	10	-	-	-	-	-	-	-	-	30
Other Africa	-	-	-	-	10	20	20	12	50	50	40	11	-	-	10	223
Asia																
Japan	-	-	20	20	71	439	522	544	455	294	342	817	1,599	3,780	40	8,943
India	-	-	20	20	143	191	150	210	233	70	211	150	100	122	10	1,630
China	-	-	10	10	40	81	161	111	233	133	110	82	30	30	11	1,042
Korea	-	-	-	-	40	12	20	40	52	82	182	80	112	30	10	660
Israel	-	-	-	-	30	11	1	61	20	30	61	41	21	50	-	326
Singapore	-	-	-	10	20	20	52	81	32	42	10	10	-	-	-	277
Taiwan	-	-	-	-	-	20	20	40	10	-	20	40	40	70	-	260
Hong Kong	-	-	-	-	-	21	40	32	21	31	21	10	-	10	-	186
Malaysia	-	-	-	10	-	-	40	41	30	30	20	-	10	-	1	182
Sri Lanka	-	-	-	-	-	-	40	10	31	10	-	20	-	20	-	131
Pakistan	-	-	-	-	30	30	30	10	-	10	-	-	-	20	-	130
Turkey	-	-	-	-	10	-	20	30	-	-	30	-	10	20	-	120
Thailand	-	-	-	10	-	-	10	10	20	10	10	10	30	-	-	110
Bangladesh	-	-	-	-	10	30	10	-	-	10	-	10	-	-	-	70
Philippines	-	-	-	-	10	-	30	-	-	-	-	-	-	20	-	60
Saudi Arabia	-	-	-	-	10	-	20	-	10	-	-	-	-	10	-	50
Iran	-	-	-	-	-	10	10	10	-	10	-	-	-	-	-	40
Cyprus	-	-	-	-	-	-	-	-	10	10	10	-	-	-	-	30
Other Asia	-	-	-	20	10	40	71	41	40	11	100	30	70	80	30	543
Europe																
United Kingdom	13	11	43	1,053	2,217	2,721	2,741	2,060	1,897	1,762	1,797	1,995	1,562	1,914	32	21,818
Germany	10	2	13	239	629	1,467	1,481	1,765	1,643	1,333	1,452	1,367	1,670	1,979	62	15,112
Netherlands	-	-	31	173	665	1,416	1,161	739	515	794	880	961	799	946	50	9,130
France	-	10	11	174	264	550	711	583	503	567	747	845	652	588	102	6,307
Italy	10	20	10	103	133	341	802	694	395	388	393	376	257	370	3	4,295

Table 17: Total Departure By Country of Residence and Age Group – 2005 (cont'd).

Country of Residence	0-4	5-9	10-14	15-19	20-24	25-29	30-34	35-39	40-44	45-49	50-54	55-59	60-64	65+	Not Stated	Total
Europe																
Spain	-	-	-	40	61	352	584	583	495	386	324	240	112	202	20	3,399
Switzerland	-	10	1	82	121	360	498	210	314	280	336	330	242	342	20	3,146
Belgium	-	20	10	111	121	233	271	265	267	236	350	266	167	201	11	2,529
Austria	-	10	-	-	100	122	162	163	121	235	133	134	173	125	10	1,488
Denmark	-	-	20	30	132	142	213	151	81	130	140	190	111	142	-	1,482
Sweden	-	-	-	80	161	73	144	161	82	124	102	180	132	133	-	1,372
Ireland	-	1	-	20	63	317	333	72	72	45	114	91	70	63	-	1,261
Norway	-	-	10	20	191	101	92	142	72	102	83	127	122	73	10	1,145
Russia	-	10	-	11	31	80	111	126	132	95	124	32	-	-	-	752
Portugal	-	-	-	20	20	41	51	91	70	72	42	21	10	30	-	468
Czechoslovakia	-	-	-	-	11	62	60	22	34	60	43	53	53	21	-	419
Poland	-	-	-	12	10	30	20	53	30	82	40	-	21	10	-	308
Finland	-	-	-	10	10	80	40	31	11	41	12	31	-	40	1	307
Greece	-	-	-	-	-	11	20	21	12	30	2	21	30	21	20	188
Yugoslavia	-	-	-	-	-	40	30	11	20	10	30	-	20	-	-	161
Hungary	-	-	-	-	-	20	30	10	-	10	11	11	10	10	-	112
Slovakia	-	-	-	-	10	30	10	10	-	-	20	20	-	-	-	100
Luxembourg	-	-	-	-	10	-	30	10	-	50	-	-	-	-	-	100
Bulgaria	-	-	-	-	10	10	12	-	-	10	-	10	-	-	-	52
Ukraine	-	-	-	10	-	10	-	20	1	10	-	1	-	-	-	52
Romania	-	-	-	-	-	-	20	10	-	-	10	-	-	-	-	40
Latvia	-	-	-	-	-	30	10	-	-	-	-	-	-	-	-	40
Other Europe	-	-	-	-	-	20	30	1	12	42	1	40	1	10	-	157
America																
USA	11	2	85	1,066	1,667	2,068	2,176	1,588	1,712	2,307	2,638	3,010	3,520	6,002	207	28,059
Canada	-	10	10	92	254	413	305	294	172	288	305	374	325	503	2	3,347
Mexico	-	-	-	22	52	41	50	11	22	12	20	10	13	32	-	285
Brazil	-	10	-	-	10	-	10	13	41	30	10	20	-	-	-	144

Table 17: Total Departure By Country of Residence and Age Group – 2005 (cont'd).

Country of Residence	0-4	5-9	10-14	15-19	20-24	25-29	30-34	35-39	40-44	45-49	50-54	55-59	60-64	65+	Not Stated	Total
America																
Argentina	-	10	-	10	-	40	20	10	10	-	-	-	1	1	-	102
Cuba	-	-	-	-	-	-	31	-	10	-	10	-	30	-	-	81
Belgium	-	-	-	10	4	10	30	21	-	-	1	-	-	1	-	77
Jamaica	-	-	-	-	-	-	10	10	10	-	-	10	-	20	-	60
Colombia	-	-	-	-	-	-	-	10	10	20	10	-	10	-	-	60
Costa Rica	-	-	-	-	10	-	-	-	-	-	1	-	-	20	-	31
Bermuda	-	-	-	-	-	-	-	-	-	10	-	-	10	10	-	30
Ecuador	-	-	-	20	-	-	-	-	-	-	-	10	-	-	-	30
Other America	-	-	-	10	30	20	50	31	20	31	30	20	30	10	-	282
Oceania																
Australia	-	10	-	217	691	1,327	915	573	438	682	755	749	638	665	42	7,702
New Zealand	-	-	1	20	211	424	321	162	51	62	163	162	71	113	-	1,761
Other Oceania	-	-	-	10	-	-	10	-	-	-	-	30	10	-	-	60
Not Stated	50	156	277	2,577	9,189	14,487	15,079	15,257	13,441	13,977	11,285	8,673	5,020	6,233	1,782	117,483
Total	564	1,725	5,784	50,495	178,861	283,981	318,713	275,477	206,514	183,373	136,197	91,337	55,216	67,346	12,072	1,867,655
<i>Percent</i>	<i>0.03</i>	<i>0.09</i>	<i>0.31</i>	<i>2.70</i>	<i>9.58</i>	<i>15.21</i>	<i>17.06</i>	<i>14.75</i>	<i>11.06</i>	<i>9.82</i>	<i>7.29</i>	<i>4.89</i>	<i>2.96</i>	<i>3.61</i>	<i>0.65</i>	<i>100.00</i>

Table 18: Total Departures by Country of Residence and Month - 2005

Country of Residence	January	February	March	April	May	June	July	August	September	October	November	December	Total
Africa													
Zimbabwe	28,150	21,815	59,251	58,688	38,530	50,835	57,248	54,675	63,605	21,143	33,395	95,285	582,620
South Africa	43,919	32,400	49,299	39,978	38,544	31,671	39,278	39,918	48,247	40,216	44,666	84,559	532,695
Botswana	20,837	15,977	29,279	27,403	20,737	17,362	26,745	25,801	31,568	18,143	18,866	45,948	298,666
Zambia	8,202	6,585	8,893	8,866	3,643	7,886	8,465	8,277	13,159	9,953	7,992	10,885	102,806
Namibia	6,393	6,074	7,203	4,981	9,484	6,909	5,936	5,973	6,787	5,471	5,378	11,224	81,813
Lesotho	386	100	580	313	270	212	312	370	531	330	153	451	4,008
Malawi	353	232	340	150	291	210	113	280	340	260	370	640	3,579
Swaziland	282	81	430	191	283	127	140	490	312	340	142	471	3,289
Kenya	84	82	120	257	170	120	110	211	232	241	140	252	2,019
Tanzania	101	97	90	165	103	110	130	160	101	80	135	160	1,432
Mozambique	170	20	30	110	51	60	30	131	160	80	131	171	1,144
Uganda	20	20	60	60	60	20	60	90	50	50	40	90	620
Mauritius	50	13	30	21	30	61	40	81	71	22	51	70	540
Angola	70	20	10	21	50	30	10	80	40	41	30	26	428
Nigeria	10	50	10	20	60	30	60	20	53	40	30	10	393
DRC	10	20	70	50	21	2	30	40	60	20	-	40	363
Ethiopia	-	-	20	10	40	-	10	40	30	30	10	1	191
Ghana	10	-	30	20	30	-	40	10	30	10	-	10	190
Egypt	-	-	10	-	-	-	10	-	10	10	20	30	90
Tunisia	-	-	10	-	-	-	10	-	-	30	20	10	80
Madagascar	-	-	-	-	-	-	10	20	10	10	20	-	70
Cameroon	-	-	10	10	-	-	20	-	10	-	-	10	60
Sudan	2	-	-	10	-	-	-	-	-	20	-	20	52
Rwanda	-	-	10	10	-	-	-	-	20	-	-	-	40
Benin	10	-	-	10	-	-	10	-	-	-	-	-	30

Table 18: Total Departures by Country of Residence and Month - 2005 (cont'd)

Country of Residence	January	February	March	April	May	June	July	August	September	October	November	December	Total
Africa													
Burkina Faso	-	-	-	-	-	-	10	-	-	10	-	10	30
Senegal	-	-	-	10	10	-	10	-	-	-	-	-	30
Seychelles	-	10	-	-	-	10	-	-	-	-	-	10	30
Other Africa	2	10	-	40	1	40	40	20	20	30	-	20	223
Asia													
Japan	200	230	402	221	640	242	290	430	4,341	1,492	213	242	8,943
India	114	80	51	83	280	90	160	210	130	110	42	280	1,630
China	52	120	80	73	52	50	40	121	70	140	131	113	1,042
Korea	40	30	20	20	-	-	20	100	290	40	10	90	660
Israel	20	30	20	22	10	-	10	30	70	60	30	24	326
Singapore	40	10	52	11	21	22	20	10	30	-	10	51	277
Taiwan	70	20	20	-	20	-	-	80	30	-	-	20	260
Hong Kong	4	-	10	40	-	30	40	10	20	1	20	11	186
Malaysia	10	21	-	-	60	11	30	10	10	-	10	20	182
Sri Lanka	20	20	-	1	20	10	-	20	10	10	10	10	131
Pakistan	-	-	-	40	20	-	10	-	10	30	20	-	130
Turkey	20	-	30	-	-	-	-	40	10	-	-	20	120
Thailand	-	20	20	-	20	-	-	-	20	-	20	10	110
Bangladesh	-	-	10	10	-	-	-	10	20	-	-	20	70
Philippines	10	-	-	-	10	-	10	10	20	-	-	-	60
Saudi Arabia	-	-	-	-	-	-	20	20	-	-	10	-	50
Iran	-	-	-	10	10	-	-	-	-	-	-	20	40
Cyprus	-	-	-	10	-	-	-	10	10	-	-	-	30
Other Asia	191	100	30	1	-	120	40	21	10	10	-	20	543

Table 18: Total Departures by Country of Residence and Month - 2005 (cont'd)

Country of Residence	January	February	March	April	May	June	July	August	September	October	November	December	Total
Europe													
United Kingdom	1,341	1,119	1,630	2,177	1,558	1,281	1,784	2,565	2,550	2,188	1,716	1,909	21,818
Germany	838	764	1,033	799	817	716	826	1,525	2,605	2,346	1,592	1,251	15,112
Netherlands	412	423	351	435	423	346	909	1,012	1,682	1,471	830	836	9,130
France	295	221	462	598	636	283	490	1,179	587	649	486	421	6,307
Italy	216	115	187	192	195	191	352	1,641	472	410	182	142	4,295
Spain	30	31	200	295	43	138	263	995	730	372	250	52	3,399
Switzerland	186	82	266	136	208	173	187	184	584	631	281	228	3,146
Belgium	150	118	195	211	176	61	260	296	422	293	144	203	2,529
Austria	45	133	51	90	70	60	111	235	282	211	60	140	1,488
Denmark	134	101	152	60	121	51	160	120	151	162	110	160	1,482
Sweden	81	151	180	121	60	60	60	62	120	130	122	225	1,372
Ireland	94	82	102	151	61	100	130	62	160	172	105	42	1,261
Norway	36	120	180	40	31	71	91	40	131	92	143	170	1,145
Russia	204	54	70	20	72	40	21	61	90	50	30	40	752
Portugal	11	11	50	30	10	3	40	51	40	40	110	72	468
Czechoslovakia	22	10	40	65	10	10	30	20	91	63	48	10	419
Poland	14	10	31	41	-	20	30	50	50	40	22	-	308
Finland	30	20	62	12	10	-	10	2	70	40	20	31	307
Greece	10	-	10	40	-	10	20	21	42	-	10	25	188
Yugoslavia	90	20	10	-	10	10	10	10	1	-	-	-	161
Hungary	10	-	10	-	-	-	-	10	20	-	22	40	112
Slovakia	-	-	10	50	20	-	-	-	10	-	10	-	100
Luxembourg	10	-	20	-	10	40	-	-	-	10	-	10	100
Bulgaria	1	-	10	10	-	-	-	10	20	-	1	-	52
Ukraine	-	20	-	-	20	-	-	2	-	-	-	10	52

Table 18: Total Departures by Country of Residence and Month - 2005 (cont'd)

Country of Residence	January	February	March	April	May	June	July	August	September	October	November	December	Total
Europe													
Romania	10	-	-	-	-	-	10	20	-	-	-	-	40
Latvia	10	-	-	-	-	-	-	-	20	-	10	-	40
Other Europe	12	-	30	2	-	10	10	43	-	30	-	20	157
America													
USA	1,205	1,026	2,329	1,629	1,966	2,684	3,807	3,312	4,463	2,523	1,280	1,835	28,059
Canada	230	315	255	284	288	138	217	308	480	361	228	243	3,347
Mexico	36	1	11	20	10	10	80	3	10	10	30	64	285
Brazil	10	10	-	20	10	2	-	31	-	30	11	20	144
Argentina	10	-	20	-	-	-	-	20	22	20	10	-	102
Cuba	10	-	10	10	-	-	10	10	1	20	-	10	81
Belgium	47	-	-	10	-	20	-	-	-	-	-	-	77
Jamaica	-	-	-	-	20	-	-	-	40	-	-	-	60
Colombia	-	-	-	40	-	-	-	-	10	10	-	-	60
Costa Rica	1	-	-	-	10	-	-	-	20	-	-	-	31
Bermuda	10	-	-	-	-	-	-	10	-	10	-	-	30
Ecuador	-	-	-	-	-	20	-	10	-	-	-	-	30
Other America	61	11	40	-	-	70	50	10	40	-	-	-	282
Oceania													
Australia	670	450	437	634	412	459	517	724	1,599	803	386	611	7,702
New Zealand	136	100	96	70	83	112	153	200	241	170	210	190	1,761
Other Oceania	-	-	-	-	30	-	10	10	-	-	10	-	60
Not Stated	8,752	7,819	10,202	9,627	7,271	8,308	4,956	10,651	13,119	10,279	11,503	14,996	117,483
Total	125,322	97,624	175,272	159,855	128,232	131,767	155,171	163,334	201,522	122,109	132,087	275,360	1,867,655

Table 19: Total Departures by Country of Residence and Border Post - 2005

Country of Residence	Tlokweng	Sir Seretse Khama Air	Parrs Halt	Mamono	Sikwane	Ramotswa	Francis town Air	Ramokgwe bana road	Kazungula road	Maun Airport	Mohembo	Plaatjan	Ponts Drift	Ngoma
Africa														
Zimbabwe	4,960	2,750	760	6,140	1,050	1,000	138	494,950	29,460	120	510	130	10	5,130
South Africa	132,160	23,860	11,630	28,290	20,090	21,800	1,298	17,410	12,220	3,000	4,550	10,430	4,840	3,250
Botswana	63,400	21,670	3,710	3,580	2,660	15,660	566	96,330	9,100	1,850	590	2,730	1,190	670
Zambia	3,260	830	40	300	20	140	8	1,290	7,230	-	140	30	-	330
Namibia	1,360	830	90	30,870	160	30	5	870	2,950	140	3,300	-	10	10,900
Lesotho	2,300	300	10	40	110	90	1	10	20	-	-	20	20	10
Malawi	1,000	550	-	100	-	60	-	720	40	-	10	-	-	-
Swaziland	1,620	300	50	110	-	50	3	130	100	-	-	-	10	-
Kenya	390	560	10	50	-	-	4	90	200	40	130	-	-	60
Tanzania	140	460	-	50	-	20	12	70	70	10	-	-	-	-
Mozambique	220	440	-	110	-	20	4	80	50	30	10	-	10	10
Uganda	100	200	-	-	-	10	-	50	10	-	-	-	-	10
Mauritius	90	320	-	-	-	20	5	20	-	-	-	-	-	-
Angola	20	280	-	10	-	-	1	-	10	40	-	-	-	-
Nigeria	30	330	-	20	-	-	-	-	-	-	-	-	-	-
DRC	20	180	-	10	-	10	-	-	20	10	-	-	-	-
Ethiopia	10	140	-	-	-	10	1	10	-	10	10	-	-	-
Ghana	10	140	-	20	-	-	-	10	10	-	-	-	-	-
Egypt	20	50	-	-	-	-	-	-	-	-	-	-	-	-
Tunisia	10	70	-	-	-	-	-	-	-	-	-	-	-	-
Madagascar	-	70	-	-	-	-	-	-	-	-	-	-	-	-
Cameroon	-	40	-	10	-	-	-	-	-	-	-	-	-	-
Sudan	-	50	-	-	-	-	-	-	-	-	-	-	-	-
Rwanda	-	30	-	-	-	-	-	-	-	-	-	-	-	-
Benin	-	10	-	-	-	-	-	-	-	10	-	-	-	-
Burkina Faso	10	10	-	-	-	-	-	-	-	-	-	-	-	-
Senegal	-	20	-	-	-	-	-	-	-	10	-	-	-	-
Seychelles	-	-	-	-	-	-	-	-	-	-	-	-	-	-
Other Africa	30	140	-	-	-	-	-	-	10	-	-	-	-	-

Table 19: Total Departures by Country of Residence and Border Post – 2005 (cont'd)

Country of Residence	Tlokweng	Sir Seretse Khama Air	Parrs Halt	Mamono	Sikwane	Ramotswa	Francis town Air	Ramokgwe bana road	Kazungula road	Maun Airport	Mohembo	Plaatjan	Ponts Drift	Ngoma
Asia														
Japan	20	90	-	20	-	-	2	20	8,240	180	20	-	-	60
India	350	850	-	10	-	30	4	-	80	30	-	-	-	-
China	100	400	-	50	-	30	1	20	320	30	20	-	-	-
Korea	-	80	-	-	-	10	-	-	510	-	40	-	-	-
Israel	40	70	-	20	-	-	-	-	90	10	10	-	-	-
Singapore	50	110	-	-	-	10	-	10	10	20	10	-	-	-
Taiwan	20	50	-	-	-	-	-	-	120	-	10	-	-	-
Hong Kong	10	30	-	-	-	10	-	-	30	70	10	-	-	-
Malaysia	30	100	-	-	-	-	2	-	20	-	-	-	-	-
Sri Lanka	20	80	-	-	-	-	-	-	20	-	-	-	-	10
Pakistan	60	50	-	-	-	10	-	-	-	-	-	-	-	-
Turkey	10	-	-	-	-	-	-	-	10	50	-	-	-	-
Thailand	10	30	-	10	-	-	-	-	-	20	10	-	-	-
Bangladesh	10	10	-	-	-	-	-	-	10	-	-	-	-	-
Philippines	10	20	-	-	-	-	-	-	-	10	-	-	-	-
Saudi Arabia	-	40	-	-	-	-	-	-	-	10	-	-	-	-
Iran	10	10	-	-	-	-	-	10	10	-	-	-	-	-
Cyprus	10	20	-	-	-	-	-	-	-	-	-	-	-	-
Other Asia	10	40	-	10	-	-	1	-	380	20	10	-	-	-
Europe														
United Kingdom	1,410	3,120	70	760	130	210	79	290	2,510	3,450	1,610	350	490	520
Germany	400	530	20	1,740	10	50	6	60	4,260	1,100	1,390	100	160	1,350
Netherlands	170	260	-	360	30	-	1	40	2,460	320	2,140	80	160	740
France	60	420	10	210	30	40	3	-	2,150	800	410	20	180	120
Italy	90	130	-	130	10	-	2	20	1,750	720	80	-	60	60
Spain	20	130	-	50	-	-	4	-	1,520	320	530	-	20	230
Switzerland	70	240	-	260	-	10	5	-	890	630	210	20	70	150
Belgium	50	220	10	90	-	20	3	10	730	450	220	10	150	40
Austria	10	50	20	90	-	20	-	-	580	140	90	-	20	90
Denmark	60	210	10	10	-	-	2	-	320	120	90	130	220	20

Table 19: Total Departures by Country of Residence and Border Post – 2005 (cont'd)

Country of Residence	Tlokweng	Sir Seretse Khama Air	Parrs Halt	Mamono	Sikwane	Ramotswa	Francis town Air	Ramokgwe bana road	Kazungula road	Maun Airport	Mohembo	Plaatjan	Ponts Drift	Ngoma
Europe														
Sweden	100	250	-	20	-	10	1	-	330	140	150	-	20	10
Ireland	70	170	-	-	30	10	2	-	220	90	140	20	10	20
Norway	50	180	-	10	-	20	4	20	250	40	110	-	10	30
Russia	70	50	-	20	10	-	1	-	150	30	10	-	10	10
Portugal	110	30	-	10	-	10	-	-	90	40	50	-	20	-
Czechoslovakia	40	20	10	-	-	10	-	-	90	10	40	-	10	40
Poland	-	-	-	10	-	10	-	-	170	10	10	-	-	10
Finland	20	40	-	10	-	-	4	10	120	20	-	-	10	-
Greece	10	20	-	-	-	-	2	-	90	50	-	-	10	-
Yugoslavia	90	30	-	-	-	-	-	-	10	-	-	-	-	-
Hungary	-	20	-	-	-	-	-	-	50	20	10	-	-	-
Slovakia	10	10	-	-	-	-	-	-	10	-	50	-	-	-
Luxembourg	10	10	-	-	-	-	-	-	-	20	-	-	-	10
Bulgaria	20	-	-	10	-	10	2	-	-	-	-	-	-	-
Ukraine	-	-	-	-	-	-	-	-	-	10	-	-	-	-
Romania	-	20	-	-	-	-	-	-	10	-	10	-	-	-
Latvia	-	-	-	10	-	-	-	-	20	-	-	-	-	-
Other Europe	-	10	-	-	-	10	-	-	30	40	10	10	-	10
America														
USA	1,180	3,050	40	320	90	50	94	100	8,130	5,900	480	90	330	190
Canada	150	410	20	100	10	30	25	30	890	440	300	20	50	70
Mexico	10	10	-	10	-	-	-	-	60	110	-	-	20	-
Brazil	-	40	-	-	-	-	2	-	10	50	-	-	-	-
Argentina	-	-	-	-	-	-	-	-	50	-	20	-	-	-
Cuba	20	50	-	-	-	-	-	-	-	-	-	-	-	-
Belgium	-	-	-	10	10	-	-	-	-	-	-	-	-	-
Jamaica	-	-	-	-	-	-	-	10	20	10	-	-	-	-
Colombia	-	-	-	-	-	-	-	-	10	-	10	-	-	-
Costa Rica	-	-	-	-	-	-	-	-	-	10	-	-	-	-

Table 19: Total Departures by Country of Residence and Border Post – 2005 (cont'd)

Country of Residence	Tlokweng	Sir Seretse Khama Air	Parrs Halt	Mamono	Sikwane	Ramotswa	Francis town Air	Ramogwe bana road	Kazungula road	Maun Airport	Mohembo	Plaatjan	Ponts drift	Ngoma
America														
Bermuda	-	-	-	-	-	-	-	-	10	10	-	-	-	-
Ecuador	-	10	-	-	-	-	-	-	-	-	-	-	-	-
Other America	10	30	-	10	-	-	2	-	90	40	40	-	-	-
Oceania														
Australia	180	420		210	10	-	142	80	2,450	640	950	80	50	180
New Zealand	30	60		70	-	-	-	20	390	170	360	-	10	80
Other Oceania	10	-	-	-	-	-	-	-	50	-	-	-	-	-
Not Stated	25,470	3,580	900	2,510	1,640	2,220	138	13,800	6,370	970	910	320	460	2,160
Total	241,930	70,540	17,410	76,870	26,100	41,760	2,580	626,590	108,690	22,640	19,820	14,590	8,640	26,580

Table 19: Total Departures by Country of Residence and Border Post – 2005 (cont'd)

Country of Residence	Selibe Phikwe	Zanzibar	Mako pong	Martins drift	Orapa Air	Panda matenga	Kazungula ferry	Kasane Air	Sowa airport	Phitshane Molopo	Bray	Ramatla bama	Pioneer gate	Ghanzi Air	Jwaneng Air
Africa															
Zimbabwe	5	41	-	3,200	17	254	1,810	8	1	260	4	1,900	800	-	1
South Africa	203	1,503	991	59,390	654	498	10,590	439	516	16,800	2,017	67,280	60,470	14	290
Botswana	167	776	65	17,290	288	236	10,310	306	204	1,320	1,442	18,030	19,210	-	103
Zambia	1	4	-	10,170	27	4	76,870	6	-	10	4	670	510	-	6
Namibia	-	6	8	910	3	17	410	32	-	-	5	2,940	14,070	3	127
Lesotho	-	3	2	90	1	2	70	-	-	10	2	600	290	-	-
Malawi	-	1	-	270	-	2	410	2	1	10	-	240	150	-	-
Swaziland	-	1	-	430	2	1	110	2	-	20	-	60	270	-	-
Kenya	1	-	-	20	-	7	370	3	-	-	-	50	30	-	-
Tanzania	-	-	-	60	1	1	510	5	-	-	-	10	10	-	-
Mozambique	-	-	-	60	-	-	50	-	-	-	-	30	20	-	-
Uganda	-	-	-	30	-	-	160	-	-	-	-	40	10	-	-
Mauritius	-	1	-	40	-	-	10	-	-	-	-	-	30	-	-
Angola	-	1	-	-	-	-	50	6	-	-	-	-	10	-	-
Nigeria	-	-	-	-	-	-	-	3	-	-	-	10	-	-	-
DRC	-	-	-	20	-	-	80	2	-	-	-	-	10	-	-
Ethiopia	-	-	-	-	-	-	-	-	-	-	-	-	-	-	-
Ghana	-	-	-	-	-	-	-	-	-	-	-	-	-	-	-
Egypt	-	-	-	-	-	-	10	-	-	-	-	-	10	-	-
Tunisia	-	-	-	-	-	-	-	-	-	-	-	-	-	-	-
Madagascar	-	-	-	-	-	-	-	-	-	-	-	-	-	-	-
Cameroon	-	-	-	-	-	-	-	-	-	-	-	10	-	-	-
Sudan	-	-	-	-	-	-	-	-	-	-	-	-	-	-	-
Rwanda	-	-	-	-	-	-	10	-	-	-	-	-	-	-	-
Benin	-	-	-	-	-	-	10	-	-	-	-	-	-	-	-
Burkina Faso	-	-	-	-	-	-	10	-	-	-	-	-	-	-	-
Senegal	-	-	-	-	-	-	-	-	-	-	-	-	-	-	-
Seychelles	-	-	-	-	-	-	30	-	-	-	-	-	-	-	-
Other Africa	-	-	-	10	-	-	30	-	-	-	-	-	-	-	-

Table 19: Total Departures by Country of Residence and Border Post – 2005 (cont'd)

Country of Residence	Selibe Phikwe	Zanzibar	Makopong	Martins drift	Orapa Air	Panda matenga	Kazungula ferry	Kasane Air	Sowa Airport	Phitshane Molopo	Bray	Ramatla bama	Pioneer gate	Ghanzi Air	Jwaneng Air
Asia															
Japan	-	1	-	30	1	1	130	6	-	-	-	-	10	-	-
India	1	-	-	60	-	-	60	-	-	-	-	30	120	-	-
China	-	1	-	-	-	6	20	1	-	-	-	10	30	-	-
Korea	-	-	-	-	-	-	10	-	-	-	-	-	-	-	-
Israel	-	-	-	30	-	-	50	4	-	-	-	-	-	-	-
Singapore	-	-	-	10	-	1	40	1	-	-	-	-	-	-	1
Taiwan	-	-	-	10	-	-	20	-	-	-	-	10	-	-	-
Hong Kong	-	-	-	-	-	-	20	3	-	-	-	-	-	-	-
Malaysia	-	-	-	10	-	-	10	-	-	-	-	-	-	-	-
Sri Lanka	-	-	-	-	-	1	-	-	-	-	-	-	-	-	-
Pakistan	-	-	-	-	-	-	-	-	-	-	-	-	10	-	-
Turkey	-	-	-	-	-	-	50	-	-	-	-	-	-	-	-
Thailand	-	-	-	-	-	-	30	-	-	-	-	-	-	-	-
Bangladesh	-	-	-	20	-	-	10	-	-	-	-	10	-	-	-
Philippines	-	-	-	-	-	-	20	-	-	-	-	-	-	-	-
Saudi Arabia	-	-	-	-	-	-	-	-	-	-	-	-	-	-	-
Iran	-	-	-	-	-	-	-	-	-	-	-	-	-	-	-
Cyprus	-	-	-	-	-	-	-	-	-	-	-	-	-	-	-
Other Asia	-	-	-	-	-	1	40	-	-	-	-	-	30	-	-
Europe															
United Kingdom															
United Kingdom	11	5	-	1,080	14	36	4,310	148	8	20	11	240	390	-	10
Germany	-	8	5	1,080	9	17	1,650	36	-	-	1	60	220	-	11
Netherlands	-	3	-	470	1	21	1,410	20	-	-	-	50	200	-	2
France	-	1	-	270	-	18	1,270	31	-	-	-	30	50	-	3
Italy	-	-	-	210	-	3	680	4	-	-	4	10	40	-	14
Spain	-	-	2	60	-	5	450	14	-	-	-	10	10	-	-
Switzerland	4	2	-	140	-	4	230	14	-	-	2	10	60	-	-
Belgium	6	-	-	40	-	2	360	8	-	-	1	-	40	-	-
Austria	-	1	-	110	-	3	180	8	1	-	-	-	20	-	1

Table 19: Total Departures by Country of Residence and Border Post – 2005 (cont'd).

Country of Residence	Selibe Phikwe	Zanzibar	Makopong	Martins drift	Orapa Air	Panda matenga	Kazungula ferry	Kasane Air	Sowa Airport	Phitshane Molopo	Bray	Ramatlabama	Pioneer gate	Ghanzi Air	Jwaneng Air
Europe															
Denmark	-	-	-	50	-	-	130	-	-	-	-	-	50	-	-
Sweden	-	-	-	110	4	-	180	5	-	-	-	-	20	-	-
Ireland	-	3	-	70	-	-	310	12	-	-	1	-	30	-	-
Norway	-	12	-	140	-	-	130	1	1	-	-	-	20	-	1
Russia	-	-	-	10	1	-	360	13	-	-	-	-	-	-	1
Portugal	-	-	-	20	-	1	-	2	-	-	1	-	40	1	-
Czechoslovakia	-	-	-	10	-	2	100	-	-	-	-	-	-	-	-
Poland	-	-	-	20	-	1	30	1	-	-	-	-	30	-	-
Finland	-	2	-	50	-	-	10	-	-	-	-	-	10	-	-
Greece	-	-	-	-	-	-	-	6	-	-	-	-	-	-	-
Yugoslavia	-	-	-	-	-	1	20	-	-	-	-	-	10	-	-
Hungary	-	2	-	-	-	-	10	-	-	-	-	-	-	-	-
Slovakia	-	-	-	-	-	-	20	-	-	-	-	-	-	-	-
Luxembourg	-	-	-	50	-	-	-	-	-	-	-	-	-	-	-
Bulgaria	-	-	-	-	-	-	10	-	-	-	-	-	-	-	-
Ukraine	-	-	-	-	-	-	40	-	-	-	-	-	-	-	-
Romania	-	-	-	-	-	-	-	-	-	-	-	-	-	-	-
Latvia	-	-	-	-	-	-	10	-	-	-	-	-	-	-	-
Other Europe	-	-	-	-	2	-	30	2	-	-	-	-	-	-	-
America															
USA	57	13	2	820	3	22	4,270	398	1	-	8	110	160	9	13
Canada	5	4	-	210	1	2	450	24	-	-	-	20	50	-	-
Mexico	-	-	-	10	-	-	40	13	-	-	-	-	-	-	-
Brazil	-	-	-	20	-	-	20	2	-	-	-	-	-	-	-
Argentina	-	-	-	20	-	-	10	-	-	-	-	-	-	-	-
Cuba	-	1	-	10	-	-	-	-	-	-	-	-	-	-	-
Belgium	-	-	-	20	-	-	10	1	-	-	2	-	20	-	-
Jamaica	-	-	-	-	-	-	10	-	-	-	-	10	-	-	-
Colombia	-	-	-	-	-	-	40	-	-	-	-	-	-	-	-

Table 19: Total Departures by Country of Residence and Border Post – 2005 (cont'd)

Country of Residence	Selibe Phikwe	Zanzibar	Mako pong	Martins drift	Orapa Air	Panda matenga	Kazungula ferry	Kasane Air	Sowa Airport	Phitshane Molopo	Bray	Ramatla bama	Pioneer gate	Ghanzi Air	Jwaneng Air
America															
Costa Rica	-	-	-	10	-	-	10	-	-	-	1	-	-	-	-
Bermuda	-	-	-	-	-	-	10	-	-	-	-	-	-	-	-
Ecuador	-	-	-	20	-	-	-	-	-	-	-	-	-	-	-
Other America	-	-	-	10	-	-	30	-	-	-	-	-	20	-	-
Oceania															
Australia	8	5	2	870	6	13	1,000	69	1	-	3	50	100	-	4
New Zealand	-	-	-	240	-	-	220	4	-	-	-	20	10	-	-
Other Oceania	-	-	-	-	-	-	-	-	-	-	-	-	-	-	-
Not Stated	24	149	33	17,570	16	116	11,490	93	53	3,270	219	5,850	9,300	1	20
Total	493	2,550	1,110	115,980	1,051	1,299	131,960	1,758	787	21,720	3,728	98,400	107,000	28	608

Table 20. Total Departures by Border Post and Month - 2005

Border Post	January	February	March	April	May	June	July	August	September	October	November	December	Total	Percent
Road														
Ramokgwebana road	26,090	18,750	67,110	66,690	40,480	56,450	63,360	62,430	64,000	18,370	33,120	109,740	626,590	33.55
Tlokweg	22,230	13,090	21,720	20,100	20,220	7,790	17,470	19,790	20,750	19,600	26,210	32,960	241,930	12.95
Kazungula ferry	9,880	6,420	11,820	12,320	3,740	10,420	11,580	12,230	15,660	14,870	10,010	13,010	131,960	7.07
Martins Drift	9,240	7,920	9,480	8,470	8,570	9,620	1,470	10,930	8,860	9,540	10,960	20,920	115,980	6.21
Kazungula road	7,560	7,810	6,920	5,570	4,190	6,220	9,510	10,320	31,780	9,060	1,400	8,350	108,690	5.82
Pioneer	9,500	9,350	14,300	8,120	8,990	-	11,980	8,370	9,650	8,340	8,180	10,230	107,010	5.73
Ramatlabama	9,220	3,730	9,890	8,380	8,830	170	4,560	3,250	9,260	9,570	8,340	23,200	98,400	5.27
Mamono	5,320	4,630	6,370	3,870	5,950	8,780	5,720	5,260	5,640	4,930	4,430	15,970	76,870	4.12
Ramotswa	3,490	2,960	4,020	2,150	3,170	4,140	3,990	3,420	3,860	3,110	3,500	3,950	41,760	2.24
Ngoma	2,550	2,130	2,500	1,340	2,750	2,670	1,250	1,180	2,730	2,980	2,810	1,690	26,580	1.42
Sikwane	3,360	1,160	1,970	1,270	1,650	2,860	1,890	1,930	1,540	1,760	2,000	4,710	26,100	1.40
Matsiloje	940	-	1,750	1,470	1,470	2,490	1,910	1,910	2,030	1,740	1,540	4,560	21,810	1.17
Phitshane Molopo	450	2,800	520	3,570	430	3,820	420	3,310	3,800	620	500	1,480	21,720	1.16
Maitengwe	1,620	2,240	1,670	1,300	1,250	1,140	1,650	1,470	1,540	1,140	1,370	3,780	20,170	1.08
Mohembo	1,110	920	1,180	1,450	1,300	1,190	2,380	2,400	1,810	1,810	1,620	2,650	19,820	1.06
Kasane	-	3,140	1,230	1,170	1,470	1,470	1,370	680	1,580	1,520	1,360	3,110	18,100	0.97
Parrs Halt	2,120	1,130	1,740	1,200	1,320	1,410	1,670	410	1,210	1,270	1,020	2,910	17,410	0.93
Plaatjan	480	3,280	560	430	440	440	540	500	3,900	440	2,740	840	14,590	0.78
Ponts Drift	570	-	720	580	800	540	1,270	1,030	820	1,020	730	560	8,640	0.46
Bray	267	221	363	277	333	301	45	329	312	345	338	597	3,728	0.20
Kwando	1,200	182	227	151	65	210	159	235	77	102	97	338	3,043	0.16
Tsabong	343	171	45	381	41	315	54	375	339	42	199	430	2,735	0.15
Middlepits	204	255	251	302	233	38	219	198	140	176	70	481	2,567	0.14
Zanzibar	346	362	48	346	370	424	51	48	50	46	370	89	2,550	0.14
Bokspits	227	145	63	216	247	184	438	165	254	128	135	37	2,239	0.12
Two rivers	108	78	485	225	176	68	185	119	171	121	66	138	1,940	0.10
Pandamatenga	57	68	104	265	66	77	145	91	136	85	60	145	1,299	0.07
Makopong	62	39	85	90	137	55	136	72	88	81	76	189	1,110	0.06
Dobe	83	-	116	48	174	91	8	50	41	202	59	92	964	0.05

Table 20. Total Departures by Border Post and Month - 2005 (cont'd).

Border Post	January	February	March	April	May	June	July	August	September	October	November	December	Total	Percent
Limpopo Valley	50	-	79	27	94	27	72	66	92	68	68	35	678	<i>0.0</i>
Boshoek	31	96	16	11	2	4	3	5	-	7	-	22	197	<i>0.0</i>
Air														
Sir Seretse Khama Air	4,910	3,760	5,910	5,700	6,300	5,950	6,260	7,280	6,300	6,010	6,150	6,010	70,540	<i>3.8</i>
Maun Airport	1,070	-	1,460	1,800	2,490	1,790	2,970	2,740	2,480	2,450	2,010	1,380	22,640	<i>1.2</i>
Francistown Airport	128	239	176	239	179	243	52	294	290	240	318	182	2,580	<i>0.1</i>
Kasane Airport	285	316	160	50	58	158	15	78	103	73	47	415	1,758	<i>0.1</i>
Orapa Airport	68	85	100	104	112	93	87	71	82	79	74	96	1,051	<i>0.1</i>
Sowa Airport	81	64	85	75	62	51	71	58	71	71	51	47	787	<i>0.0</i>
Jwaneng Airport	44	35	4	47	34	27	62	223	34	56	33	9	608	<i>0.0</i>
Selibe Phikwe Air	28	48	24	46	39	31	149	17	40	37	26	8	493	<i>0.0</i>
Ghanzi Airport	-	-	1	5	-	10	-	-	12	-	-	-	28	<i>0.0</i>
Total	125,322	97,624	175,272	159,855	128,232	131,767	155,171	163,334	201,532	122,109	132,087	275,360	1,867,665	<i>100.0</i>

Table 21: Total Departures by Month and Mode of Travel - 2005

Month	Road	Air	Other	Not known	Total
January	118,620	6,614	77	11	125,322
February	92,768	4,547	309	-	97,624
March	165,147	7,920	782	1,423	175,272
April	146,536	8,066	1,157	4,096	159,855
May	116,851	9,274	995	1,112	128,232
June	123,333	8,353	81	-	131,767
July	144,260	9,664	820	427	155,171
August	152,326	10,744	52	212	163,334
September	188,289	9,407	487	3,349	201,532
October	109,393	9,002	1,076	2,638	122,109
November	123,368	8,709	10	-	132,087
December	261,875	8,147	2,030	3,308	275,360
Total	1,742,766	100,447	7,876	16,576	1,867,665
<i>Percent</i>	93.3	5.4	0.4	0.9	100.0