

STATISTICS BOTSWANA

TOURISM STATISTICS ANNUAL REPORT 2014

Copyrights © Statistics Botswana 2014

Statistics Botswana. Private Bag 0024 Botswana
Tel: (267) 367 1300. **Fax:** (267) 395 2201. **Email:** info@statsbots.org.bw
Website: www.cso.gov.bw

**TOURISM STATISTICS
ANNUAL REPORT 2014**

Published by
Statistics Botswana,
Private Bag 0024, Gaborone

Tel: (267) 3931300
Fax: (267) 3952201/3935628
E-mail: info@statsbots.org.bw
Website: www.cso.gov.bw

COPYRIGHT RESERVED

Extracts may be published if source is duly acknowledged.

ISBN: 978-99968-464-4-1

PREFACE

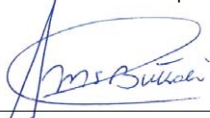
The Tourism Statistics Annual report is one of Statistics Botswana's annual publications. The purpose of this report is to provide up to date statistics to policy makers and all other stakeholders in the development and management of the Tourism Sector in Botswana.

The information contained in this publication is compiled from completed immigration arrival/departure forms. Travelers entering and leaving the country are required to complete arrival/departure forms at all gazetted points of entry/departure. This covers all land borders as well as airports.

The report gives arrivals and departures statistics during 2014 and follows the 2013 report released in June 2015. Due to technical challenges, the 2011 report will never be released and the series of Tourism Statistics Annual Reports as a result has no data for that year.

Users who require more information can contact the Directorate of Stakeholder Relations at 3671300. All Statistics Botswana outputs/publications are available on the website at www.cso.gov.bw and at the Statistics Botswana Library (Head-Office, Gaborone).

We sincerely thank all stakeholders involved in the formulation of this report, particularly the Department of Immigration and Citizenship for their continued support and feedback, as we strive to better serve Botswana and all other important users of our services.



Dabilani Buthali
Acting Statistician General
February 2016

TABLE OF CONTENTS

PREFACE	4
1.0 Introduction.....	6
2.0 Arrangement of Report.....	6
3.0 Total Arrivals.....	6
3.1 Arrivals by Nationality.....	7
3.2 Arrivals by Purpose of Entry.....	7
3.3 Distribution of Arrivals by Age Group.....	8
3.4 Arrivals by Border Post.....	8
3.5 Month of Arrival.....	8
3.6 Mode of Travel.....	9
4.0 Total Departures.....	9
4.1 Total Departures by Nationality.....	9
4.2 Departures by Country of Residence.....	9
4.3 Departures by Age Group.....	9
4.4 Departures by Month and Border Post.....	10
4.5 Departure by Mode of Travel.....	10

List of Tables

Table 1: Total Arrivals by Nationality and Sex.....	11
Table 2: Total Arrivals by Country of Residence and Sex.....	14
Table 3: Total Arrivals by Nationality and Purpose of Entry.....	18
Table 4: Total Arrivals by Country of Residence and Purpose of Entry.....	22
Table 5: Total Arrivals by Purpose of Entry and Age Group - 2014.....	26
Table 5A: Total Arrivals by Purpose of Entry and Age Group – Percentage Distributions.....	26
Table 5B: Total Arrivals by Purpose of Entry and Age Group.....	26
Table 6: Total Arrivals by Country of Residence and Age Group.....	27
Table 7: Total Arrivals by Nationality and Age Group.....	31
Table 8: Total Arrivals by Nationality and Month.....	35
Table 9: Total Arrivals by Country of Residence and Month.....	39
Table 10: Total Arrivals by Border Post and Continent of Nationality.....	43
Table 11: Total Arrivals by Border Post and Month of Arrival.....	44
Table 12: Total Arrivals by Month of Arrival and Mode of Travel.....	45
Table 13: Total Arrivals by Month and Quarter.....	46
Table 14: Total Departures by Nationality and Sex.....	48
Table 15: Total Departures by Country of Residence and Sex.....	52
Table 16: Total Departures by Nationality and Age Group.....	56
Table 17: Total Departures by Country of Residence and Age Group.....	60
Table 18: Total Departures by Border Post and Month - 2013.....	64
Table 19: Total Departures by Month and Mode of Travel.....	65

1.0 Introduction

The Tourism statistics report is an annual publication that depicts the statistics of non-citizens including temporary residents entering and leaving the country. The common terms used for these are arrivals and departures. The comprehensive statistics compiled in this report include arrivals by country of residence, nationality, purpose of entry, mode of travel used, point of entry and exit as well as age groupings and sex. The information contained in this report is derived from the Department of Immigration and Citizenship arrival/departure forms, which are completed by non-citizens at points of entry and exit.

The Department of Immigration and Citizenship has automated the busiest border posts which handle high volumes of traffic and is therefore able to provide Statistics Botswana with electronic data. These borders account for over 90 percent of all travelers inbound and outbound.

Forms from the manual borders are captured by Statistics Botswana and merged with those from the automated borders before analysis is done. Botswana citizens are exempted from completing the immigration entry/departure forms. As a result, figures on arrivals and departures contained in this publication cover only non-citizens, both visitors and temporary residents of Botswana. However, with the increasing demand for statistics on outbound travelers, particularly information on citizens, it will be necessary to collect and avail data on citizens as well in future.

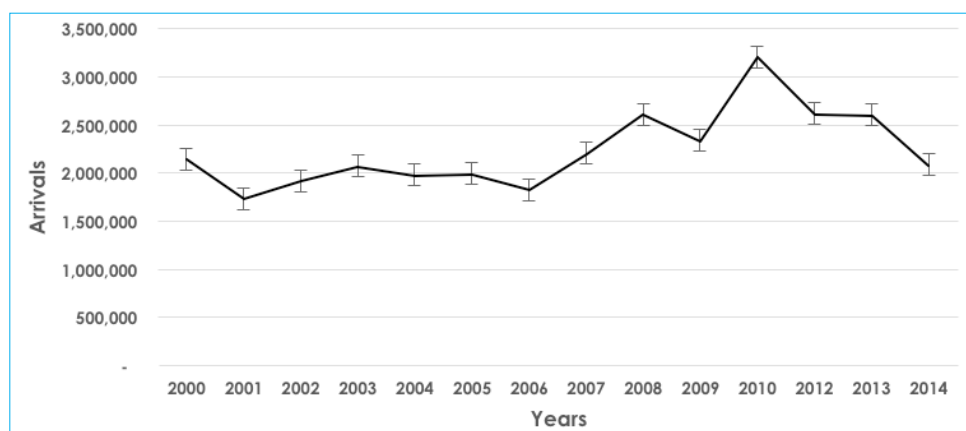
2.0 Arrangement of Report

The report is categorized into two portions. The first portion discusses arrivals while the second provides information on departures.

3.0 Total Arrivals

The country received a total of 2,082,521 arrivals in 2014. This shows a decline of 19.9 percent (515, 637) from the 2013 figure of 2,598,158. The gender distribution shows that males accounted for 62.1 percent (1,293,517) as shown in **Table 1**. This shows a decline of 1.2 percentage points from 1, 583, 408 male arrivals recorded during the previous year (2013). There were 789,004 female arrivals in 2014, showing a decline of 22.3 percent from the previous year's figure of 1,014, 750. Chart 1 shows the trend of arrivals from 2000 to 2014.

Chart 1 Total arrivals from 2000 to 2014



The 2011 figures not available

3.1 Arrivals by Nationality

Table 1 shows that Zimbabweans accounted for 37.7 percent (784, 720) of overall 2014 total arrivals (2,082, 521). This shows a decrease of 4.9 percent from the previous year's proportion of 31.8 percent of 2013 total arrivals (2, 598, 158). South Africa followed with 600, 387 (28.8 percent) showing a 19.2 percent decline. Zambians accounted for 9.0 percent (188, 351) of total arrivals into the country during the same year. Total arrivals of Zambian nationality show a decline of 43.2 percent (143,448) as compared to 2013 total Zambian arrivals (331, 799). The decrease at nationality level is in most cases as a result of the overall decline in total arrivals during the year.

The United States of America, the United Kingdom and Germany, were the only significant sources of arrivals from outside Africa, having accounted for 2.4 percent (49, 961), 1.9 percent (39, 675) and 1.7 percent (34, 576) respectively as depicted in **Table 1**.

The African continent as a whole accounted for 86.7 percent (1, 806, 514) of total arrivals during 2014, followed by Europe with 142, 875 arrivals (6.9 percent) while America accounted for 3.0 percent (62, 866) of total arrivals.

3.2 Arrivals by Purpose of Entry

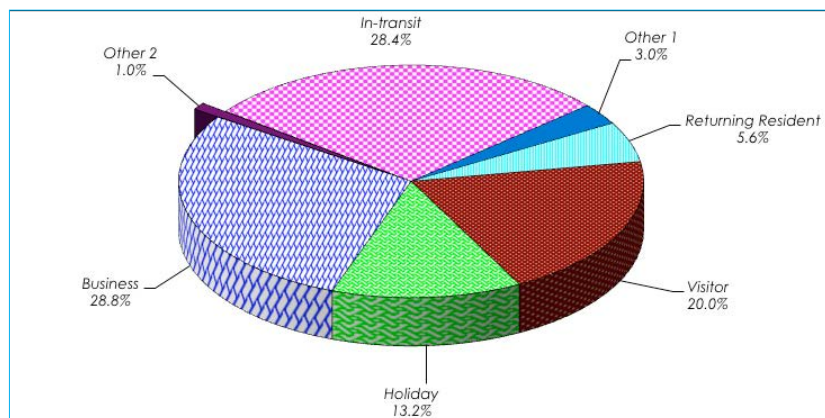
Table 3 shows that 28.8 percent (599, 782) of arrivals came for "Business Purposes, with Zimbabweans accounting for 52.4 percent (314, 495) of 2014 total arrivals coming for "Business Purposes". Total arrivals for "Business Purposes" show an increase of 68.8 percent (242, 834) from 356, 948 arrivals that came in for the same purpose in 2013.

Arrivals that were "In-Transit" accounted for 28.4 percent (591, 545) of total arrivals during 2014. "Visitors" (Visiting friends and relatives) were next at 20.0 percent (417, 034) followed by arrivals that came for "Holiday", with 13.2 percent (274, 701).

Arrivals for the purpose of "Returning Resident" contributed 5.6 percent (116, 998) of total arrivals in 2014 while 3.0 percent (61, 838) came for "Other" purpose. The least number of arrivals were those who came for the purpose of "Seeking for employment" at 769 arrivals. Those coming for "Employment" represent those who are coming into the country for the first time, to take up employment. These accounted for 0.2 percent (3, 867) of 2014 total arrivals.

The distribution by Purpose of Entry is illustrated by **Chat 2**. "Other 1" consists mainly of arrivals for purposes of shopping, religious activities, conferencing, sports and medical reasons. These are not specifically labeled in the form but are understood to fall under category "other - specify". "Other 2" consists of those arriving for all other purposes not specified as in **Table 3**.

Chart 2: Arrivals by Purpose of Entry - 2014 Percentage Distributions



Note:

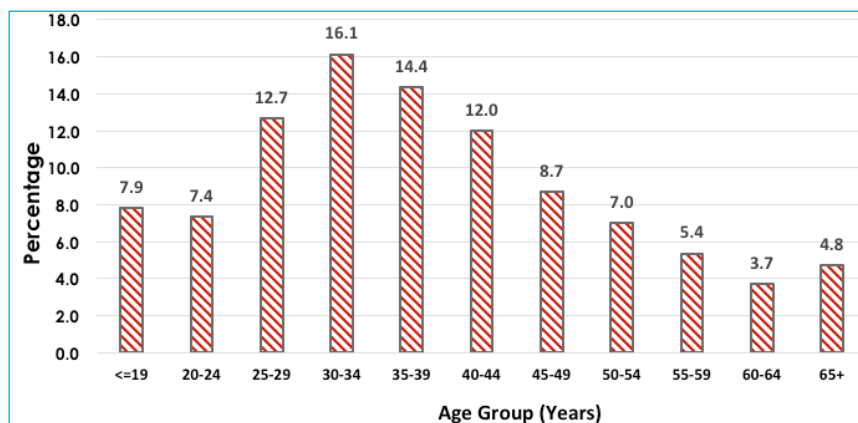
Other 1 = Arrivals for Shopping, Religious activities, conferencing, sports & Medical reasons

Other 2 = Arrivals for all other purposes not specified as in Table 3

3.3 Distribution of Arrivals by Age Group

Table 5 shows arrivals by age-group. The age-group 30-34 years contributed the most to 2014 total arrivals at 16.1 percent (336, 293), followed by the 35-39 age-group with 14.4 percent (298, 857). The 25-29 and 40-44 age-groups accounted for 12.7 percent (263, 550) and 12.0 percent (250, 270) of 2014 total arrivals respectively, during the year. These age-groups comprise mostly of people who are in the mid-ages and are the most mobile. **Chart 3**, which is based on **Table 5** and **Table 5A**, shows arrivals by age-group.

Chart 3: Arrivals by Age-Group as a Percentage of Total Arrivals – 2014



3.4 Arrivals by Border Post

Table 10 presents statistics on arrivals by Border Post. This table shows that the Ramokgwebana Border Post accounted for the highest number of arrivals having recorded 391, 828 arrivals, representing 18.8 percent of total arrivals (2, 082, 521) during the year. The Tlokweng Border Post followed with 348, 577 arrivals (16.7 percent). The third busiest border post during 2014 was the Ramatlabama Road Border Post, which recorded 12.8 percent (265, 962) of 2014 total arrivals.

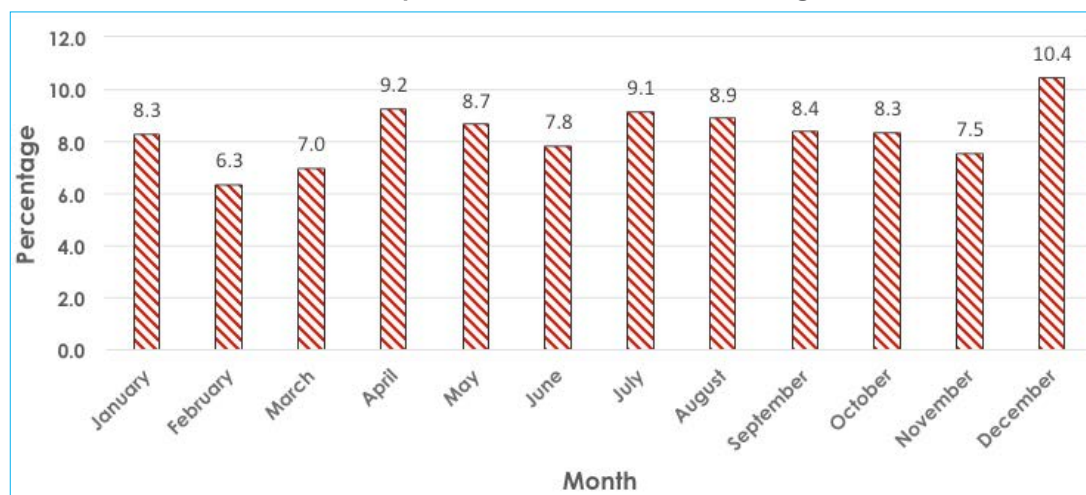
Sir Seretse Khama Airport received 4.5 percent (93, 572) of total arrivals, while Maun Airport received 1.0 percent (21, 187) of total arrivals during the year. The decline in arrivals through Sir Seretse Khama Airport was significantly high, at 33.7 percent (47, 644) as compared to 141, 216 arrivals recorded during 2013.

The least busy points of entry were the small airports/airstrips usually accessed by small charter flights and private jets. Karowe Airstrip was the newest point of entry that came as a result of the opening of the Karowe Diamond Mine, and it accounted for 242 arrivals. The number of arrivals at other points of entry during 2014 can be observed on **Table 10**.

3.5 Month of Arrival

Most arrivals were recorded in December, 217, 564 (10.4 percent), followed by April and July with 192,456 (9.2 percent) and 189,974 (9.1 percent) respectively as displayed in **Table 11**. The least number of arrivals, 132, 024 was recorded during February 2014, representing 6.3 percent of total arrivals during the year. **Chart 3A**, which is based on **Table 11**, presents percentage distributions for 2014 total arrivals by month of arrival.

Chart 3A: Total Arrivals by Month of Arrival – 2014 Percentage Distributions



3.6 Mode of Travel

Table 12 shows that 93.8 percent (1, 952, 923) of travelers arrived by road into the country during 2014. Air transport accounted for 6.2 percent (129, 598) of total arrivals in 2014. Road transport shows an increase of 4.3 percentage points as compared to the 2013 percentage contribution of 89.5 percent. This increase resulted in the reduction of the same percentage points (4.3) on the contribution made by air transport, from 10.5 percent during 2013 to 6.2 percent currently.

4.0 Total Departures

Discussions on departures are based on the second group of tables, which consists of six tables from **Table 14** to **Table 19**. A country will be more interested in information on arrivals as compared to departures. This is so because arrivals are coming into the country and it will be of interest to know what they will be doing in the country, their ages and so on as they are likely to need social services and others while they are in the country. As a result there are more tables on arrivals as compared to departures.

A total of 2, 147, 452 departures were recorded in 2014 as can be seen on **Table 14**. This shows a decrease of 4.9 percent (109, 626) when compared to a total of 2, 257, 078 departures recorded in 2013. Males accounted for 62.3 percent (1, 338, 037) of 2014 total departures.

4.1 Total Departures by Nationality

Table 14 shows that Zimbabweans accounted for 36.9 percent (792, 062) of total departures during 2014, followed by South Africans at 30.2 percent (647, 925). Zambian and Namibian nationals accounted for 8.5 percent (182, 204) and 7.4 percent (158, 770) of 2014 total departures respectively. Nationals of the United States of America accounted for 2.4 percent (51, 298) while nationals of the United Kingdom and Germany contributed 1.9 percent (41, 865) and 1.6 percent (35, 247) to 2014 total departures.

4.2 Departures by Country of Residence

As most people arriving in the country were residents of Africa (**Table 2**), it is likewise expected that the majority of people departing from the country would be residents of the African continent. Out of the total of 2, 147, 452 departures during 2014, residents of Africa accounted for 89.1 percent (1, 914, 039) as displayed by **Table 15**.

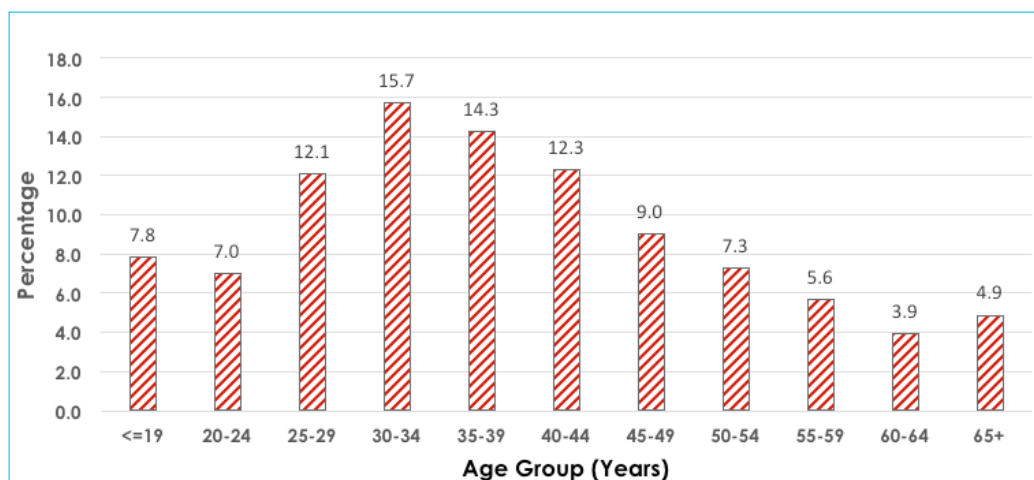
Residents of Zimbabwe accounted for 32.5 percent (696, 915) of 2014 total departures, followed by residents of South Africa with 29.9 percent (643, 092) of total departures during the year. Non-citizens resident in the country who departed in 2014 accounted for 8.3 percent (177, 830) of total departures during the year.

Residents of Zambia and Namibia accounted for 8.3 percent (178, 205) and 7.6 percent (163, 137) of all departures respectively. Those resident in the United States of America, Germany and the United Kingdom contributed for 2.2 percent (47, 318), 1.5 percent (32, 359) and 1.3 percent (28, 644) respectively to 2014 total departures.

4.3 Departures by Age Group

Table 16 shows that the highest number of departures was recorded in the 30-34 age-group, representing a total of 337, 055 (15.7 percent), followed by age-group 35-39 with 14.3 percent (306, 503) and the 40-44 age-group with 12.3 percent (264, 765). The information on total departure by age-group is also presented graphically on **Chart 4**.

Chart 4: Total Departures by Age Groups - 2014 Percentage Distributions



4.4 Departures by Month and Border Post

Table 18 presents total departures by border post and month of departure. The table shows that May recorded the highest number of departures, at 310, 484 representing 14.5 percent of total departures during the year. This was followed by April with 298, 396 (13.9 percent) and July with 270, 440 (12.6 percent). The lowest number of departures was recorded during November, at 30, 308, representing 1.4 percent of total departures.

Most departures went through the Ramokgwebana border post during 2014, representing 17.6 percent (377, 326) of total departures as displayed in Table 18. The Tlokweng border post was the next busiest border post having recorded 17.4 percent (373, 544). The Ramatlabama border post accounted for 12.4 percent (267, 014) of the total departures.

4.5 Departures by Mode of travel

Table 19 presents departures by mode of transport. Most departures were by road, 93.8 percent (2, 015, 080), while air transport accounted for 6.2 percent (132, 372) of 2014 total departures. Departures by road show a slight decrease of 0.5 of a percentage point from 94.3 percent in 2013. Air transport shows an increase of 1.8 percentage points as compared to the contribution of 4.4 percent in 2013. During 2014 there were only two modes of travel for departure, whereas in 2013 there were departures by rail as well, contributing 1.3 percent to total departures during that year.

Table 1: Total Arrivals by Nationality and Sex - 2014

Nationality	SEX		Total	
	Male	Female	Number	% Distribution
Africa				
Zimbabwe	442,784	341,936	784,720	37.7
South Africa	420,794	179,593	600,387	28.8
Zambia	126,131	62,220	188,351	9.0
Namibia	111,053	51,400	162,453	7.8
Malawi	11,837	3,338	15,175	0.7
Lesotho	5,240	7,168	12,408	0.6
Swaziland	6,640	2,172	8,812	0.4
Tanzania	5,251	1,354	6,605	0.3
Kenya	4,339	2,139	6,478	0.3
Mozambique	3,565	1,050	4,615	0.2
Angola	1,891	852	2,743	0.1
Nigeria	1,579	572	2,151	0.1
Uganda	1,547	583	2,130	0.1
Mauritius	1,351	708	2,059	0.1
DRC	1,357	684	2,041	0.1
Ghana	705	350	1,055	0.1
Ethiopia	415	290	705	0.0
Egypt	324	140	464	0.0
Cameroon	327	113	440	0.0
Seychelles	140	114	254	0.0
Tunisia	183	33	216	0.0
Rwanda	129	60	189	0.0
Sierra Leone	131	41	172	0.0
Libya	125	42	167	0.0
Madagascar	86	65	151	0.0
Congo	113	29	142	0.0
Senegal	124	15	139	0.0
Burundi	115	13	128	0.0
Algeria	94	27	121	0.0
Cote D'voire	81	40	121	0.0
Sudan	87	24	111	0.0
Morocco	79	31	110	0.0
Other Africa	527	174	701	0.0
Total	1,149,144	657,370	1,806,514	86.7

Table 1 Cont'd : Total Arrivals by Nationality and Sex - 2014

Nationality	SEX		Total	
	Male	Female	Number	% Distribution
Europe				
United Kingdom	22,252	17,423	39,675	1.9
Germany	17,772	16,804	34,576	1.7
Netherlands	5,515	5,413	10,928	0.5
France	5,604	5,051	10,655	0.5
Switzerland	3,364	3,618	6,982	0.3
Italy	3,125	2,797	5,922	0.3
Belgium	2,951	2,206	5,157	0.2
Spain	2,131	2,270	4,401	0.2
Austria	1,735	1,460	3,195	0.2
Sweden	1,515	1,442	2,957	0.1
Ireland	1,338	1,111	2,449	0.1
Norway	995	1,342	2,337	0.1
Portugal	1,363	853	2,216	0.1
Denmark	1,070	1,052	2,122	0.1
Russia	1,099	954	2,053	0.1
Poland	927	899	1,826	0.1
Finland	484	538	1,022	0.0
Czech Republic	502	354	856	0.0
Serbia	310	206	516	0.0
Greece	302	210	512	0.0
Slovakia	214	149	363	0.0
Hungary	177	156	333	0.0
Bulgaria	150	154	304	0.0
Romania	165	94	259	0.0
Luxembourg	93	87	180	0.0
Slovenia	58	92	150	0.0
Ukraine	59	77	136	0.0
Croatia	67	68	135	0.0
Cyprus	70	51	121	0.0
Other Europe	289	248	537	0.0
Total	75,696	67,179	142,875	6.9

Table 1 Cont'd: Total Arrivals by Nationality and Sex - 2014

Nationality	SEX		Total	
	Male	Female	Number	% Distribution
America				
United States	22,436	27,525	49,961	2.4
Canada	4,504	5,108	9,612	0.5
Brazil	617	595	1,212	0.1
Mexico	230	280	510	0.0
Argentina	254	178	432	0.0
Chile	90	95	185	0.0
Cuba	101	74	175	0.0
Peru	94	65	159	0.0
Jamaica	87	41	128	0.0
Trinidad and Tobago	59	59	118	0.0
Colombia	50	37	87	0.0
Other America	158	129	287	0.0
Total	28,680	34,186	62,866	3.0
Asia				
India	12,443	5,899	18,342	0.9
Japan	4,326	5,847	10,173	0.5
China	4,670	2,118	6,788	0.3
South Korea	1,730	1,472	3,202	0.2
Pakistan	1,424	732	2,156	0.1
Israel	1,526	535	2,061	0.1
Sri Lanka	1,148	675	1,823	0.1
Bangladesh	717	383	1,100	0.1
Singapore	425	415	840	0.0
Malaysia	241	271	512	0.0
Philippines	220	196	416	0.0
Turkey	245	91	336	0.0
Taiwan	136	127	263	0.0
Lebanon	193	35	228	0.0
Hong Kong	66	64	130	0.0
Thailand	44	57	101	0.0
Iran	45	32	77	0.0
Indonesia	54	21	75	0.0
Jordan	54	18	72	0.0
Other Asia	107	83	190	0.0
Total	29,814	19,071	48,885	2.3
Oceania				
Australia	8,203	9,454	17,657	0.8
New Zealand	1,587	1,496	3,083	0.1
Other Oceania	5	3	8	0.0
Total	9,795	10,953	20,748	1.0
Not Known	388	245	633	0.0
Grand Total	1,293,517	789,004	2,082,521	100.0

Table 2: Total Arrivals by Country of Residence and Sex - 2014

Country of Residence	SEX		Total	
	Male	Female	Number	% Distribution
Africa:				
Botswana	80,380	37,663	118,043	5.7
Zimbabwe	381,764	325,917	707681	34.0
South Africa	439,594	174,946	614540	29.5
Zambia	122,172	60,910	183082	8.8
Namibia	112,193	52,145	164338	7.9
Lesotho	4,541	6,425	10966	0.5
Malawi	8,576	2,325	10901	0.5
Swaziland	5,409	1,957	7366	0.4
Tanzania	4,238	940	5178	0.2
Kenya	2,865	1,397	4262	0.2
Mozambique	2,570	823	3393	0.2
Angola	1657	773	2430	0.1
Uganda	1015	398	1413	0.1
Mauritius	795	437	1232	0.1
DRC	717	363	1080	0.1
Nigeria	662	278	940	0.0
Ethiopia	359	220	579	0.0
Ghana	331	182	513	0.0
Somalia	318	116	434	0.0
Egypt	241	103	344	0.0
Cameroon	206	77	283	0.0
Tunisia	191	38	229	0.0
Seychelles	113	98	211	0.0
Rwanda	112	55	167	0.0
Sudan	116	34	150	0.0
Madagascar	85	54	139	0.0
Senegal	116	18	134	0.0
Libya	108	20	128	0.0
Burundi	106	17	123	0.0
Sierra Leone	86	30	116	0.0
Algeria	87	28	115	0.0
Cote D'voire	69	40	109	0.0
Congo	77	26	103	0.0
Morocco	77	26	103	0.0
Other Africa	489	153	642	0.0
Total	1,172,435	669,032	1,841,467	100.0

Table 2 Cont'd: Total Arrivals by Country of Residence and Sex - 2014

Country of Residence	SEX		Total	
	Male	Female	Number	% Distribution
Europe:				
Germany	16,619	16,224	32,843	1.6
United Kingdom	15,774	13,756	29,530	1.4
Netherlands	5,290	5,310	10,600	0.5
France	5,188	4,828	10,016	0.5
Switzerland	3,418	3,623	7,041	0.3
Italy	2,781	2,655	5,436	0.3
Belgium	2,595	2,092	4,687	0.2
Spain	2,500	2,624	5,124	0.2
Austria	1,497	1,371	2,868	0.1
Sweden	1,331	1,317	2,648	0.1
Norway	944	1,317	2,261	0.1
Denmark	995	1,021	2,016	0.1
Bosnia and Herzegovina	1,026	871	1,897	0.1
Russia	971	903	1,874	0.1
Ireland	908	807	1,715	0.1
Poland	845	846	1,691	0.1
Portugal	794	573	1,367	0.1
Finland	458	506	964	0.0
Czech Republic	530	368	898	0.0
Slovakia	205	144	349	0.0
Greece	198	151	349	0.0
Hungary	167	121	288	0.0
Romania	139	96	235	0.0
Serbia	144	102	246	0.0
Luxembourg	99	86	185	0.0
Bouvet Island	87	85	172	0.0
Bulgaria	82	85	167	0.0
Iceland	77	89	166	0.0
Slovenia	50	78	128	0.0
Ukraine	50	68	118	0.0
Other Europe	419	322	741	0.0
Total	66,181	62,439	128,620	6.2

Table 2 Cont'd: Total Arrivals by Country of Residence and Sex - 2014

Country of Residence	SEX		Total	
	Male	Female	Number	% Distribution
America:				
United States	21139	26290	47,429	2.3
Canada	4032	4786	8,818	0.4
Brazil	558	551	1,109	0.1
Mexico	229	267	496	0.0
Argentina	208	160	368	0.0
Bolivia	171	141	312	0.0
Chile	89	91	180	0.0
Bahamas	65	65	130	0.0
Peru	59	51	110	0.0
Cuba	59	46	105	0.0
Jamaica	56	38	94	0.0
Colombia	38	37	75	0.0
Trinidad and Tobago	35	40	75	0.0
Other America	176	117	293	0.0
Total	26,914	32,680	59,594	2.9

Table 2 Cont'd: Total Arrivals by Country of Residence and Sex - 2014

Country of Residence	SEX		Total	
	Male	Female	Number	% Distribution
Asia:				
Japan	3986	5601	9,587	0.5
India	5124	2203	7,327	0.4
South Korea	1389	1210	2,599	0.1
China	1632	810	2,442	0.1
Israel	1298	487	1,785	0.1
Pakistan	533	269	802	0.0
Singapore	393	403	796	0.0
Sri Lanka	356	224	580	0.0
Yemen	338	175	513	0.0
Bangladesh	302	178	480	0.0
Hong Kong	211	207	418	0.0
United Arab Emirates	213	94	307	0.0
Turkey	190	83	273	0.0
Philippines	96	112	208	0.0
Taiwan	97	104	201	0.0
Lebanon	97	36	133	0.0
Thailand	50	37	87	0.0
Afghanistan	42	26	68	0.0
Indonesia	45	18	63	0.0
Other Asia	206	153	359	0.0
Total	16,598	12,430	29,028	1.4
Oceania:				
Australia	7875	9194	17,069	0.8
New Zealand	1334	1338	2,672	0.1
Vanuatu	225	242	467	0.0
Solomon Islands	126	44	170	0.0
Myanmar	77	37	114	0.0
Other Oceania	10	2	12	0.0
Total	9,647	10,857	20,504	1.0
Not Known	1,742	1,566	3,308	0.2
Total	1,293,517	789,004	2,082,521	100.0

Table 3: Total Arrivals by Nationality and Purpose of Entry - 2014

Nationality	PURPOSE OF ENTRY											Total
	Returning Resident	Prospective Resident	Seeking Employment	Employment	Visitor	Holiday	Business	In-transit	Diplomat	Student	Other	
Africa												
Zimbabwe	38,821	1,816	512	1,026	195,031	18,285	314,495	194,938	1,073	1,553	17,170	784,720
South Africa	32,049	1,287	116	837	160,821	68,519	150,071	166,665	861	1,382	17,779	600,387
Zambia	4,570	203	29	79	13,471	2,067	83,425	72,483	226	250	11,548	188,351
Namibia	674	386	19	42	17,452	4,564	10,553	119,408	109	321	8,925	162,453
Malawi	1,846	118	3	33	3,535	275	3,495	5,385	53	62	370	15,175
Lesotho	724	23	4	25	3,249	908	4,823	608	110	128	1,806	12,408
Swaziland	381	20	2	14	1,643	809	2,603	2,819	39	99	383	8,812
Tanzania	826	80	3	15	1,408	194	974	2,926	49	30	100	6,605
Kenya	1,484	166	5	44	1,487	868	1,446	610	44	46	278	6,478
Mozambique	408	22	1	18	930	240	1,588	1,148	90	18	152	4,615
Angola	90	6	5	5	281	490	738	669	62	146	251	2,743
Nigeria	1,091	101	3	18	193	45	361	15	45	20	259	2,151
Uganda	338	52	1	11	747	93	515	237	15	16	105	2,130
Mauritius	635	42	3	6	334	207	618	28	30	16	140	2,059
DRC	1,248	45	2	13	249	17	316	45	33	2	71	2,041
Ghana	488	38	1	6	142	24	279	5	15	12	45	1,055
Ethiopia	179	40	-	12	91	38	225	4	10	15	91	705
Egypt	81	5	1	-	24	5	147	16	1	1	183	464
Cameroon	41	1	-	3	139	30	138	27	5	5	51	440
Seychelles	23	2	1	3	7	9	141	7	8	19	34	254
Tunisia	3	-	-	-	-	1	113	-	2	-	97	216
Rwanda	20	4	-	2	7	3	86	3	4	-	60	189
Sierra Leone	55	6	-	3	46	4	44	1	3	3	7	172
Libya	36	3	-	1	30	-	52	-	21	-	24	167
Madagascar	20	3	-	1	6	4	82	-	5	-	30	151
Congo	1	-	-	-	12	4	50	17	1	-	57	142
Senegal	6	-	-	-	3	2	54	1	4	1	68	139
Burundi	6	-	-	-	8	3	62	3	9	1	36	128
Algeria	-	-	-	-	-	3	78	1	3	-	36	121
Cote D'voire	12	1	-	-	14	2	46	1	4	-	41	121
Sudan	9	-	-	2	22	1	50	-	8	1	18	111
Morocco	13	-	-	1	4	4	30	1	-	-	57	110
Other Africa	55	7	-	1	44	23	316	23	15	11	206	701
Total	86,233	4,477	711	2,221	401,430	97,741	578,014	568,094	2,957	4,158	60,478	1,806,514

Table 3 Cont'd: Total Arrivals by Nationality and Purpose of Entry - 2014

Nationality	PURPOSE OF ENTRY											Total
	Returning Resident	Prospective Resident	Seeking Employment	Employment	Visitor	Holiday	Business	In-transit	Diplomat	Student	Other	
Europe												
United Kingdom	4,927	302	10	210	4,430	20,601	4,936	3,854	91	74	240	39,675
Germany	756	68	3	123	883	26,151	1,171	5,258	71	24	68	34,576
Netherlands	230	23	1	30	312	8,909	412	984	7	4	16	10,928
France	241	19	1	44	280	7,992	831	1,138	39	11	59	10,655
Switzerland	67	3	0	17	95	5,750	103	928	4	7	8	6,982
Italy	156	17	0	20	151	4,627	368	552	10	7	14	5,922
Belgium	171	17	0	21	158	3,505	829	413	18	2	23	5,157
Spain	58	3	0	24	48	3,774	178	292	5	3	16	4,401
Austria	69	6	1	10	54	2,507	81	451	7	2	7	3,195
Sweden	113	10	1	12	208	2,044	317	207	13	10	22	2,957
Ireland	376	21	1	4	257	1,246	321	208	6	3	6	2,449
Norway	40	3	0	6	113	1,834	89	236	9	1	6	2,337
Portugal	278	20	0	7	181	959	371	363	5	4	28	2,216
Denmark	61	10	0	6	118	1,573	92	245	6	2	9	2,122
Russia	79	8	0	5	30	1,569	94	195	66	1	6	2,053
Poland	28	2	0	8	69	1,381	59	271	1	0	7	1,826
Finland	42	0	2	6	71	669	83	118	3	22	6	1,022
Czech Republic	9	3	0	1	19	670	19	124	7	0	4	856
Serbia	357	20	2	4	52	44	37	0	0	0	0	516
Greece	76	3	0	1	37	262	95	25	6	0	7	512
Slovakia	6	0	0	0	4	270	37	40	0	0	6	363
Hungary	15	4	0	4	16	220	45	19	6	0	4	333
Bulgaria	75	13	0	0	52	79	36	46	0	0	3	304
Romania	7	0	0	2	15	142	81	11	0	0	1	259
Luxembourg	0	0	0	0	0	144	3	33	0	0	0	180
Slovenia	2	0	0	1	3	126	7	10	0	0	1	150
Ukraine	27	0	0	3	18	66	9	11	1	0	1	136
Croatia	37	2	0	0	40	37	14	4	1	0	0	135
Cyprus	33	2	0	0	17	32	28	8	1	0	0	121
Other Europe	69	5	1	8	49	319	45	32	1	1	7	537
Total	8,405	584	23	577	7,780	97,502	10,791	16,076	384	178	575	142,875

Table 3 Cont'd: Total Arrivals by Nationality and Purpose of Entry - 2014

Nationality	PURPOSE OF ENTRY											Total
	Returning Resident	Prospective Resident	Seeking Employment	Employment	Visitor	Holiday	Business	In-transit	Diplomat	Student	Other	
America												
United States of America	1548	143	14	213	2456	38624	2561	3260	393	369	380	49,961
Canada	355	43	1	45	636	7255	468	732	18	22	37	9,612
Brazil	37	1	0	2	39	922	74	120	6	0	11	1,212
Mexico	3	0	0	4	6	450	14	27	3	1	2	510
Argentina	46	5	0	0	13	288	20	53	5	0	2	432
Chile	0	0	0	1	4	145	13	20	1	1	0	185
Cuba	54	8	0	12	26	11	43	1	6	1	13	175
Peru	24	2	1	2	4	97	20	5	0	1	3	159
Jamaica	55	1	0	0	29	24	11	4	3	0	1	128
Trinidad and Tobago	22	1	0	2	23	37	24	3	1	3	2	118
Colombia	2	0	0	0	2	50	27	5	1	0	0	87
Other America	33	2	-	1	33	148	50	11	3	-	6	287
Total	2,179	206	16	282	3,271	48,051	3,325	4,241	440	398	457	62,866
Asia												
India	10848	873	11	371	1845	509	3650	33	51	62	89	18,342
Japan	181	28	1	33	78	8857	366	584	25	9	11	10,173
China	3753	464	3	192	543	933	745	47	44	33	31	6,788
South Korea	186	17	1	7	194	2253	363	131	14	12	24	3,202
Pakistan	1669	106	0	12	211	20	84	22	15	6	11	2,156
Israel	132	12	0	7	94	999	744	28	11	0	34	2,061
Sri Lanka	1340	105	2	35	176	31	90	0	14	18	12	1,823
Bangladesh	927	60	0	13	72	2	23	0	2	0	1	1,100
Singapore	22	4	0	3	29	637	113	19	7	0	6	840
Malaysia	21	1	0	0	28	392	55	8	2	0	5	512
Philippines	224	13	0	7	90	61	18	0	0	2	1	416
Turkey	19	2	0	2	65	166	53	24	1	1	3	336
Taiwan	49	2	0	3	4	178	27	0	0	0	0	263
Lebanon	147	12	0	7	22	0	35	4	0	0	1	228
Hong Kong	1	0	0	0	2	111	15	1	0	0	0	130
Thailand	21	5	0	5	3	33	28	0	3	3	0	101
Iran	28	2	0	0	13	7	22	3	0	0	2	77
Indonesia	9	0	0	0	1	30	12	5	17	0	1	75
Jordan	31	3	0	3	6	3	23	0	0	0	3	72
Other Asia	21	3	-	4	23	52	52	1	19	9	6	190
Total	19,629	1,712	18	704	3,499	15,274	6,518	910	225	155	241	48,885

Table 3 Cont'd: Total Arrivals by Nationality and Purpose of Entry - 2014

Nationality	PURPOSE OF ENTRY											Total
	Returning Resident	Prospective Resident	Seeking Employment	Employment	Visitor	Holiday	Business	In-transit	Diplomat	Student	Other	
Oceania												
Australia	377	36	1	73	748	13822	695	1806	7	36	56	17,657
New Zealand	158	18	0	9	152	2289	123	317	0	1	16	3,083
Other Oceania	1	0	0	0	2	1	3	1	0	0	0	8
Total	536	54	1	82	902	16,112	821	2,124	7	37	72	20,748
Not Known	16	3	0	1	152	21	313	100	7	5	15	633
Total	116,998	7,036	769	3,867	417,034	274,701	599,782	591,545	4,020	4,931	61,838	2,082,521
% Distribution	5.6	0.3	0.0	0.2	20.0	13.2	28.8	28.4	0.2	0.2	3.0	100

Table 4: Total arrivals by Country of Residence and Purpose of Entry - 2014

Country of Residence	PURPOSE OF ENTRY											Total
	Returning Resident	Prospective Resident	Seeking Employment	Employment	Visitor	Holiday	Business	In-transit	Diplomat	Student	Other	
Africa:												
Botswana	116,998	-	-	595	-	-	-	-	318	132	-	118,043
Zimbabwe		2,256	200	408	193,128	10,534	308,660	173,210	1,124	1,598	16,563	707,681
South Africa		1,194	376	1,023	165,671	76,338	160,148	188,885	1,050	1,379	18,476	614,540
Zambia		130	32	66	13,072	2,279	83,743	72,069	224	218	11,249	183,082
Namibia		399	24	51	17,281	5,033	10,534	121,707	95	303	8,911	164,338
Lesotho		15	6	19	3,019	904	4,490	587	71	100	1,755	10,966
Malawi		66	4	10	2,766	253	2,590	4,826	31	48	307	10,901
Swaziland		9	2	5	1,553	777	2,099	2,448	26	72	375	7,366
Tanzania		39	2	9	1,194	254	873	2,656	33	24	94	5,178
Kenya		73	4	30	1,181	849	1,285	485	34	38	283	4,262
Mozambique		11	1	8	751	253	1,199	962	51	17	140	3,393
Angola		3	4	3	249	480	670	612	35	133	241	2,430
Uganda		21	-	8	556	82	435	198	6	16	91	1,413
Mauritius		3	3	6	303	172	557	22	13	14	139	1,232
DRC		19	3	6	335	47	425	109	31	-	105	1,080
Nigeria		50	2	7	155	52	342	21	17	13	281	940
Ethiopia		21	-	4	102	45	272	5	29	11	90	579
Ghana		11	2	-	125	32	264	5	16	9	49	513
Somalia		-	-	4	79	47	193	84	5	5	17	434
Egypt		1	-	-	22	8	124	15	2	-	172	344
Cameroon		1	-	1	76	21	107	22	5	2	48	283
Tunisia		-	-	-	3	5	119	3	1	-	98	229
Seychelles		-	1	1	3	13	134	6	6	15	32	211
Rwanda		1	-	-	7	9	86	1	3	-	60	167
Sudan		2	1	-	27	9	64	11	7	1	28	150
Madagascar		-	-	1	10	6	85	2	4	1	30	139
Senegal		-	-	-	6	5	48	1	4	1	69	134
Libya		4	-	1	24	-	48	1	8	-	42	128
Burundi		-	-	-	7	7	62	2	9	1	35	123
Sierra Leone		3	-	3	40	7	44	10	1	3	5	116
Algeria		-	-	-	-	2	76	-	1	-	36	115
Cote D'voire		1	-	-	12	5	47	1	4	-	39	109
Congo		-	-	-	4	-	37	2	2	-	58	103
Morocco		-	-	-	12	2	34	1	-	-	54	103
Other Africa		3	-	1	27	38	290	17	16	7	243	642
Total	116,998	4,336	667	2,270	401,800	98,568	580,184	568,986	3,282	4,161	60,215	1,841,467

Table 4 Cont'd: Total arrivals by Country of Residence and Purpose of Entry - 2014

Country of Residence	PURPOSE OF ENTRY											Total
	Returning Resident	Prospective Resident	Seeking Employment	Employment	Visitor	Holiday	Business	In-transit	Diplomat	Student	Other	
Europe:												
Germany		51	9	154	730	25,991	871	4,895	35	26	81	32,843
United Kingdom		117	16	143	3,509	19,410	2,979	3,016	35	78	227	29,530
Netherlands		22	3	54	248	9,038	256	939	5	4	31	10,600
France		7	5	68	239	7,880	644	1,083	25	12	53	10,016
Switzerland		5	1	35	85	5,844	126	909	8	6	22	7,041
Italy		7	2	21	114	4,537	243	483	6	6	17	5,436
Belgium		11	2	26	115	3,445	658	392	12	4	22	4,687
Spain		1	2	110	67	4,439	163	315	-	-	27	5,124
Austria		5	1	9	24	2,353	50	416	3	-	7	2,868
Sweden		8	4	14	164	1,950	267	203	7	13	18	2,648
Norway		3	-	10	113	1,820	77	230	2	1	5	2,261
Denmark		5	-	8	102	1,550	65	267	4	2	13	2,016
Bosnia and Herze- govina		1,106	-	-	264	106	211	106	53	51	-	1,897
Russia		1	-	7	45	1,549	79	148	37	3	5	1,874
Ireland		11	3	4	183	1,186	151	169	2	1	5	1,715
Poland		1	-	8	45	1,339	47	245	-	-	6	1,691
Portugal		12	-	4	94	843	183	204	1	1	25	1,367
Finland		-	2	10	56	663	58	147	1	21	6	964
Czech Republic		1	-	5	21	723	10	124	5	-	9	898
Slovakia		-	-	1	3	270	33	38	-	-	4	349
Greece		-	-	3	25	233	62	19	2	-	5	349
Hungary		1	-	1	13	208	37	18	6	-	4	288
Romania		-	-	2	14	141	68	8	1	1	-	235
Serbia		4	4	8	81	88	59	-	-	-	2	246
Luxembourg		-	-	-	-	149	4	32	-	-	-	185
Bouvet Island		34	-	-	23	23	46	34	11	-	1	172
Bulgaria		6	-	-	29	73	23	33	-	-	3	167
Iceland		-	-	1	29	75	42	18	-	1	-	166
Slovenia		-	-	1	5	108	7	5	-	-	2	128
Ukraine		-	-	4	23	66	12	12	-	-	1	118
Other Europe		6	1	5	110	398	84	117	5	1	14	741
Total	-	1,425	55	716	6,573	96,498	7,615	14,625	266	232	615	128,620

Table 4 Cont'd: Total arrivals by Country of Residence and Purpose of Entry - 2014

Country of Residence	PURPOSE OF ENTRY											Total
	Returning Resident	Prospective Resident	Seeking Employment	Employment	Visitor	Holiday	Business	In-transit	Diplomat	Student	Other	
America:												
United States		94	26	223	2,193	38,522	2,273	3,154	247	332	365	47,429
Canada		27	1	32	574	7,037	363	721	9	17	37	8,818
Brazil		1	-	2	36	896	49	114	3	-	8	1,109
Mexico		-	-	4	7	445	9	29	1	-	1	496
Argentina		-	-	-	9	287	13	54	2	-	3	368
Bolivia		142	-	-	57	-	57	-	28	27	1	312
Chile		-	-	1	1	146	8	24	-	-	-	180
Bahamas		10	-	2	17	39	7	54	-	-	1	130
Peru		1	1	1	4	91	7	3	-	-	2	110
Cuba		6	-	12	20	12	39	-	3	-	13	105
Jamaica		1	-	-	20	46	14	11	1	-	1	94
Colombia		-	-	-	2	53	12	5	-	3	-	75
Trinidad and Tobago		-	-	2	14	34	16	6	1	1	1	75
Other America		2	1	1	27	178	38	37	1	1	7	293
Total	-	284	29	280	2,981	47,786	2,905	4,212	296	381	440	59,594
Asia:												
Japan		10	1	23	63	8,572	310	570	17	8	13	9,587
India		336	2	297	2,078	598	3,857	41	31	38	49	7,327
South Korea		9	1	3	127	2,090	269	74	4	4	18	2,599
China		252	2	119	570	787	599	29	27	27	30	2,442
Israel		2	-	3	75	954	685	27	11	-	28	1,785
Pakistan		78	-	16	460	58	124	26	16	16	8	802
Singapore		1	-	3	29	634	99	24	1	-	5	796
Sri Lanka		56	4	32	279	53	119	7	21	7	2	580
Yemen		-	-	6	35	17	158	140	1	6	150	513
Bangladesh		176	-	-	204	9	91	-	-	-	-	480
Hong Kong		-	-	4	15	334	48	16	-	-	1	418
United Arab Emirates		-	-	1	37	96	155	15	-	1	2	307
Turkey		-	-	2	45	153	50	19	1	1	2	273
Philippines		2	-	7	80	88	18	9	-	2	2	208
Taiwan		-	-	-	6	163	29	3	-	-	-	201
Lebanon		4	-	5	29	13	57	16	-	-	9	133
Thailand		-	-	-	2	42	40	2	-	-	1	87
Afghanistan		-	-	-	16	13	15	24	-	-	-	68
Indonesia		-	-	-	3	30	14	5	11	-	-	63
Other Asia		5	-	1	71	99	112	48	16	1	6	359
Total	-	931	10	522	4,224	14,803	6,849	1,095	157	111	326	29,028

Table 4 Cont'd: Total arrivals by Country of Residence and Purpose of Entry - 2014

Country of Residence	PURPOSE OF ENTRY											Total
	Returning Resident	Prospective Resident	Seeking Employment	Employment	Visitor	Holiday	Business	In-transit	Diplomat	Student	Other	
Oceania:												
Australia		23	2	64	725	13,767	576	1,807	6	35	64	17,069
New Zealand		14	1	5	128	2,156	70	283	-	1	14	2,672
Vanuatu		3	-	-	32	369	47	9	2	-	5	467
Solomon Islands		1	-	-	31	30	49	55	-	-	4	170
Myanmar		-	1	-	12	13	4	80	1	2	1	114
Other Oceania		-	-	-	3	6	2	-	-	-	1	12
Total	-	41	4	69	931	16,341	748	2,234	9	38	89	20,504
Not Known		19	4	10	525	705	1,481	393	10	8	153	3,308
Total	116,998	7,036	769	3,867	417,034	274,701	599,782	591,545	4,020	4,931	61,838	2,082,521

Table 5: Total Arrivals by Purpose of Entry and Age Group - 2014

Purpose of Entry	AGE GROUP											Total
	<=19	20-24	25-29	30-34	35-39	40-44	45-49	50-54	55-59	60-64	65+	
Returning Resident	13,186	4,193	8,161	14,860	17,435	18,419	14,106	10,507	7,748	4,486	3,897	116,998
Prospective Resident	732	368	618	990	1,053	995	812	591	395	246	236	7,036
Seeking Employment	71	89	72	130	106	107	73	45	29	17	30	769
Employment	141	237	611	558	458	405	379	350	273	204	251	3,867
Visitor	54,683	33,129	49,238	62,894	55,596	48,237	34,253	26,523	20,512	14,161	17,808	417,034
Holiday	23,148	15,253	21,557	22,759	18,894	20,855	23,096	26,731	26,545	27,026	48,837	274,701
Business	15,244	48,886	100,408	125,903	104,016	77,260	48,234	35,896	23,852	12,390	7,693	599,782
In-transit	50,566	43,961	71,925	95,827	91,427	75,937	55,132	41,183	29,527	17,784	18,276	591,545
Diplomat	177	182	366	616	561	552	477	453	361	186	89	4,020
Student	871	972	624	620	466	403	277	244	178	124	152	4,931
Other	4,668	6,436	9,970	11,136	8,845	7,100	4,351	3,557	2,613	1,463	1,699	61,838
Total	163,487	153,706	263,550	336,293	298,857	250,270	181,190	146,080	112,033	78,087	98,969	2,082,521
% Distribution	7.9	7.4	12.7	16.1	14.4	12.0	8.7	7.0	5.4	3.7	4.8	100.0

Table 5A: Percentage Distribution of Arrivals by Purpose of Entry and Age Group - 2014

Purpose of Entry	AGE GROUP											Total
	<=19	20-24	25-29	30-34	35-39	40-44	45-49	50-54	55-59	60-64	65+	
Returning Resident	11.3	3.6	7.0	12.7	14.9	15.7	12.1	9.0	6.6	3.8	3.3	100.0
Prospective Resident	10.4	5.2	8.8	14.1	15.0	14.1	11.5	8.4	5.6	3.5	3.4	100.0
Seeking Employment	9.2	11.6	9.4	16.9	13.8	13.9	9.5	5.9	3.8	2.2	3.9	100.0
Employment	3.6	6.1	15.8	14.4	11.8	10.5	9.8	9.1	7.1	5.3	6.5	100.0
Visitor	13.1	7.9	11.8	15.1	13.3	11.6	8.2	6.4	4.9	3.4	4.3	100.0
Holiday	8.4	5.6	7.8	8.3	6.9	7.6	8.4	9.7	9.7	9.8	17.8	100.0
Business	2.5	8.2	16.7	21.0	17.3	12.9	8.0	6.0	4.0	2.1	1.3	100.0
In-transit	8.5	7.4	12.2	16.2	15.5	12.8	9.3	7.0	5.0	3.0	3.1	100.0
Diplomat	4.4	4.5	9.1	15.3	14.0	13.7	11.9	11.3	9.0	4.6	2.2	100.0
Student	17.7	19.7	12.7	12.6	9.5	8.2	5.6	4.9	3.6	2.5	3.1	100.0
Other	7.5	10.4	16.1	18.0	14.3	11.5	7.0	5.8	4.2	2.4	2.7	100.0

Table 5B: Arrivals by Purpose of Entry as a Percentage of Age Group - 2014

Purpose of Entry	AGE GROUP										
	<=19	20-24	25-29	30-34	35-39	40-44	45-49	50-54	55-59	60-64	65+
Returning Resident	8.1	2.7	3.1	4.4	5.8	7.4	7.8	7.2	6.9	5.7	3.9
Prospective Resident	0.4	0.2	0.2	0.3	0.4	0.4	0.4	0.4	0.4	0.3	0.2
Seeking Employment	0.0	0.1	0.0	0.0	0.0	0.0	0.0	0.0	0.0	0.0	0.0
Employment	0.1	0.2	0.2	0.2	0.2	0.2	0.2	0.2	0.2	0.3	0.3
Visitor	33.4	21.6	18.7	18.7	18.6	19.3	18.9	18.2	18.3	18.1	18.0
Holiday	14.2	9.9	8.2	6.8	6.3	8.3	12.7	18.3	23.7	34.6	49.3
Business	9.3	31.8	38.1	37.4	34.8	30.9	26.6	24.6	21.3	15.9	7.8
In-transit	30.9	28.6	27.3	28.5	30.6	30.3	30.4	28.2	26.4	22.8	18.5
Diplomat	0.1	0.1	0.1	0.2	0.2	0.2	0.3	0.3	0.3	0.2	0.1
Student	0.5	0.6	0.2	0.2	0.2	0.2	0.2	0.2	0.2	0.2	0.2
Other	2.9	4.2	3.8	3.3	3.0	2.8	2.4	2.4	2.3	1.9	1.7
Total	100.0	100.0	100.0	100.0	100.0	100.0	100.0	100.0	100.0	100.0	100.0

Table 6: Total Arrivals by Country of Residence and Age-Group - 2014

Country of Residence	AGE GROUP											Total
	<=19	20-24	25-29	30-34	35-39	40-44	45-49	50-54	55-59	60-64	65+	
Africa:												
Botswana	11,428	7,652	13,607	19,877	17,939	14,058	10,887	8,628	6,211	3,533	4,223	118,043
Zimbabwe	52,910	66,501	117,118	148,948	121,440	90,690	48,384	27,752	17,670	9,210	7,058	707,681
South Africa	52,294	29,737	55,198	73,270	76,977	79,163	69,585	63,066	49,566	32,610	33,074	614,540
Zambia	6,900	16,095	29,104	40,488	35,962	24,787	13,640	8,164	4,448	2,068	1,426	183,082
Namibia	15,562	16,095	23,405	25,838	22,589	18,402	14,835	11,624	7,999	4,092	3,897	164,338
Lesotho	595	755	1,629	2,129	1,879	1,386	993	752	420	246	182	10,966
Malawi	696	654	1,166	2,005	1,953	1,728	1,058	722	529	211	179	10,901
Swaziland	458	652	1,401	1,394	1,205	812	587	397	242	107	111	7,366
Tanzania	267	268	663	812	1,175	727	423	368	240	154	81	5,178
Kenya	496	184	381	556	736	667	434	413	201	93	101	4,262
Mozambique	226	161	348	578	668	552	332	246	174	58	50	3,393
Angola	448	591	265	201	202	213	206	137	99	42	26	2,430
Uganda	96	77	195	278	256	160	137	80	69	37	28	1,413
Mauritius	191	56	82	116	122	162	113	128	122	77	63	1,232
DRC	224	31	64	145	212	112	101	88	48	38	17	1,080
Nigeria	201	48	46	75	115	119	116	103	86	21	10	940
Ethiopia	106	40	69	55	73	67	60	41	38	11	19	579
Ghana	57	24	34	55	68	34	53	74	55	30	29	513
Somalia	26	22	26	41	63	71	66	33	38	27	21	434
Egypt	118	38	33	18	30	24	23	21	15	13	11	344
Cameroon	31	19	28	53	37	46	21	27	13	3	5	283
Tunisia	61	12	18	27	20	18	22	24	12	13	2	229
Seychelles	30	15	25	33	14	19	24	20	23	3	5	211
Rwanda	54	14	20	14	25	16	12	6	2	3	1	167
Sudan	23	11	11	14	18	24	11	11	13	5	9	150
Madagascar	37	4	5	14	22	13	18	10	13	2	1	139
Senegal	18	12	13	11	11	17	15	11	14	9	3	134
Libya	40	7	9	17	10	9	11	7	8	7	3	128
Burundi	21	13	9	7	16	28	13	9	2	5	-	123
Sierra Leone	3	5	8	9	21	12	37	9	7	2	3	116
Algeria	59	1	5	3	8	9	9	7	9	3	2	115
Cote D'voire	34	1	5	11	11	11	7	17	3	2	7	109
Congo	37	3	5	10	5	11	6	8	10	6	2	103
Morocco	49	2	3	9	8	7	13	6	2	3	1	103
Other Africa	176	14	24	69	73	75	63	69	52	15	12	642
Total	143,972	139,814	245,022	317,180	283,963	234,249	162,315	123,078	88,453	52,759	50,662	1,841,467

Table 6 Cont'd: Total Arrivals by Country of Residence and Age-Group - 2014

Country of Residence	AGE GROUP											Total
	<=19	20-24	25-29	30-34	35-39	40-44	45-49	50-54	55-59	60-64	65+	
Europe:												
Germany	1,997	1,577	2,160	2,333	1,572	1,908	3,457	4,437	4,020	3,684	5,698	32,843
United Kingdom	3,142	1,655	1,977	2,086	1,688	2,070	2,418	2,909	3,002	3,092	5,491	29,530
Netherlands	967	916	1,125	887	536	639	836	1,051	1,066	1,054	1,523	10,600
France	920	345	674	634	618	759	786	1,039	1,053	1,254	1,934	10,016
Switzerland	450	418	637	606	408	445	515	741	740	771	1,310	7,041
Italy	374	161	404	668	525	558	579	563	548	399	657	5,436
Belgium	436	257	434	373	329	360	477	517	507	429	568	4,687
Spain	371	190	381	670	570	493	609	670	477	326	367	5,124
Austria	156	137	164	182	102	178	294	369	398	326	562	2,868
Sweden	186	245	179	188	121	150	210	254	213	281	621	2,648
Norway	424	445	209	100	79	77	112	189	175	144	307	2,261
Denmark	170	204	149	106	79	88	114	162	178	234	532	2,016
Bosnia and Herzegovina	208	134	245	303	308	213	163	119	92	63	49	1,897
Russia	165	97	187	200	187	232	247	231	162	88	78	1,874
Ireland	135	116	221	226	156	129	99	175	141	137	180	1,715
Poland	101	62	93	172	172	202	188	211	208	153	129	1,691
Portugal	102	37	104	163	127	167	131	166	147	99	124	1,367
Finland	50	103	79	77	64	67	72	103	98	100	151	964
Czech Republic	41	30	92	78	104	96	86	87	76	88	120	898
Slovakia	8	12	40	55	44	18	16	36	45	34	41	349
Greece	24	12	17	26	35	39	55	24	38	37	42	349
Hungary	17	3	20	30	49	35	22	28	17	35	32	288
Romania	9	7	45	37	34	28	26	9	6	10	24	235
Serbia	44	13	16	25	30	16	44	25	10	9	14	246
Luxembourg	18	6	11	21	10	13	22	18	20	25	21	185
Bouvet Island	16	13	22	32	23	18	21	10	8	4	5	172
Bulgaria	10	8	31	20	18	19	14	6	19	16	6	167
Iceland	18	31	22	26	17	14	8	5	9	15	1	166
Slovenia	8	5	11	8	15	18	8	17	14	11	13	128
Ukraine	4	8	22	16	5	16	21	14	7	1	4	118
Other Europe	56	50	71	87	58	72	66	80	78	57	66	741
Total	10,627	7,297	9,842	10,435	8,083	9,137	11,716	14,265	13,572	12,976	20,670	128,620

Table 6 Cont'd: Total Arrivals by Country of Residence and Age-Group - 2014

Country of Residence	AGE GROUP											Total
	<=19	20-24	25-29	30-34	35-39	40-44	45-49	50-54	55-59	60-64	65+	
America:												
United States	3,543	3,039	2,876	2,717	2,034	2,181	2,573	3,377	4,111	5,548	15,430	47,429
Canada	486	511	599	594	401	385	528	827	1,056	1,333	2,098	8,818
Brazil	113	55	109	189	119	92	89	120	77	68	78	1,109
Mexico	72	32	55	71	27	46	42	49	21	27	54	496
Argentina	30	14	26	22	33	44	22	42	40	44	51	368
Bolivia	39	16	37	55	39	48	24	21	19	7	7	312
Chile	11	15	48	24	10	3	15	10	13	12	19	180
Bahamas	19	9	16	15	12	20	8	8	7	5	11	130
Peru	9	4	10	15	16	13	10	16	8	3	6	110
Cuba	3	4	3	8	15	19	22	18	6	4	3	105
Jamaica	7	6	14	6	3	11	10	9	8	4	16	94
Colombia	4	4	7	8	16	4	9	5	12	4	2	75
Trinidad and Tobago	-	1	12	8	8	21	2	4	7	7	5	75
Other America	24	20	32	29	27	16	31	24	34	25	31	293
Total	4,360	3,730	3,844	3,761	2,760	2,903	3,385	4,530	5,419	7,091	17,811	59,594
Asia:												
Japan	192	194	478	648	478	560	471	505	652	1,396	4,013	9,587
India	1,320	325	869	969	949	863	636	465	420	250	261	7,327
South Korea	165	116	154	162	162	182	240	354	409	338	317	2,599
China	213	148	318	341	290	267	307	224	157	99	78	2,442
Israel	112	96	138	113	166	196	155	178	182	198	251	1,785
Pakistan	201	63	50	76	118	82	80	60	39	14	19	802
Singapore	69	36	68	72	85	88	77	101	78	61	61	796
Sri Lanka	131	30	59	52	57	46	36	46	77	20	26	580
Yemen	18	38	90	121	112	61	32	24	11	5	1	513
Bangladesh	147	25	28	61	57	57	75	11	9	5	5	480
Hong Kong	24	12	22	35	21	34	39	47	62	54	68	418
United Arab Emirates	17	11	21	37	36	55	43	30	20	12	25	307
Turkey	28	7	14	28	42	43	31	30	24	19	7	273
Philippines	36	10	8	29	14	21	22	13	23	12	20	208
Taiwan	8	4	6	13	9	4	11	26	24	41	55	201
Lebanon	5	15	24	28	16	6	10	20	5	-	4	133
Thailand	9	-	3	12	11	10	14	13	7	1	7	87
Afghanistan	5	3	2	15	10	5	6	11	4	1	6	68
Indonesia	5	1	3	8	7	5	6	9	3	10	6	63
Other Asia	29	26	50	53	51	39	32	29	21	15	14	359
Total	2,734	1,160	2,405	2,873	2,691	2,624	2,323	2,196	2,227	2,551	5,244	29,028

Table 6 Cont'd: Total Arrivals by Country of Residence and Age-Group - 2014

Country of Residence	AGE GROUP											Total
	<=19	20-24	25-29	30-34	35-39	40-44	45-49	50-54	55-59	60-64	65+	
Oceania:												
Australia	1,373	1,209	1,552	1,150	683	747	980	1,485	1,839	2,220	3,831	17,069
New Zealand	183	146	285	214	119	111	177	231	302	336	568	2,672
Vanuatu	33	31	37	49	36	44	49	70	49	47	22	467
Solomon Islands	17	5	18	20	26	27	16	18	10	4	9	170
Myanmar	9	6	20	14	13	16	13	8	8	3	4	114
Other Oceania	-	1	-	2	4	-	1	1	1	2	-	12
Total	1,615	1,398	1,912	1,449	881	945	1,236	1,813	2,209	2,612	4,434	20,504
Not Known	179	307	525	595	479	412	215	198	153	98	147	3,308
Total	163,487	153,706	263,550	336,293	298,857	250,270	181,190	146,080	112,033	78,087	98,969	2,082,521

Table 7: Total Arrivals by Nationality and Age Group - 2014

Nationality	AGE GROUP											Total
	<=19	20-24	25-29	30-34	35-39	40-44	45-49	50-54	55-59	60-64	65+	
Africa:												
Zimbabwe	55,612	73,392	131,664	170,054	137,929	99,888	51,992	29,155	18,000	8,927	8,107	784,720
South Africa	54,793	28,502	50,845	66,592	71,035	76,511	70,025	64,445	50,580	33,557	33,502	600,387
Zambia	7,397	16,111	29,139	40,935	36,939	25,980	14,583	8,836	4,800	2,210	1,421	188,351
Namibia	15,203	16,171	23,396	25,607	22,278	18,150	14,518	11,412	7,928	3,987	3,803	162,453
Malawi	932	845	1,573	2,729	2,670	2,461	1,567	1,018	845	270	265	15,175
Lesotho	684	876	1,857	2,362	2,117	1,546	1,126	849	468	327	196	12,408
Swaziland	500	885	1,741	1,643	1,446	928	721	466	266	99	117	8,812
Tanzania	389	320	763	966	1,421	876	564	515	388	293	110	6,605
Kenya	751	275	524	794	1,168	1,075	744	593	306	147	101	6,478
Mozambique	284	220	426	722	885	842	511	313	283	65	64	4,615
Angola	475	636	284	244	238	226	246	181	135	49	29	2,743
Nigeria	325	105	94	176	302	327	253	287	200	54	28	2,151
Uganda	140	105	255	426	382	242	210	148	115	64	43	2,130
Mauritius	275	116	130	193	176	249	211	245	260	115	89	2,059
DRC	361	61	125	322	456	208	202	150	73	59	24	2,041
Ghana	117	37	56	105	144	90	90	139	120	86	71	1,055
Ethiopia	139	49	72	75	81	116	80	35	27	12	19	705
Egypt	138	44	36	24	59	35	43	40	17	12	16	464
Cameroon	46	22	35	70	76	77	46	40	19	4	5	440
Seychelles	31	16	27	33	13	19	42	25	37	6	5	254
Tunisia	63	13	18	29	17	19	20	19	8	9	1	216
Rwanda	52	15	22	19	39	17	10	10	3	2	-	189
Sierra Leone	7	9	14	11	28	23	61	15	4	-	-	172
Libya	44	10	17	23	15	9	16	11	8	11	3	167
Madagascar	37	4	10	15	18	5	17	17	25	2	1	151
Congo	40	5	4	19	8	18	19	9	13	5	2	142
Senegal	16	10	16	14	17	14	14	10	16	10	2	139
Burundi	17	12	16	11	19	30	12	4	2	5	-	128
Algeria	59	1	7	6	9	9	8	6	12	4	-	121
Cote D'voire	37	1	5	11	9	12	7	26	3	3	7	121
Sudan	23	10	7	9	10	15	9	8	13	3	4	111
Morocco	51	4	6	8	10	11	7	7	2	3	1	110
Other Africa	188	21	26	56	83	87	69	90	56	16	9	701
Total	139,226	138,903	243,210	314,303	280,097	230,115	158,043	119,124	85,032	50,416	48,045	1,806,514

Table 7 Cont'd: Total Arrivals by Nationality and Age Group - 2014

Nationality	AGE GROUP											Total
	<=19	20-24	25-29	30-34	35-39	40-44	45-49	50-54	55-59	60-64	65+	
Europe:												
United Kingdom	3,990	1,773	2,334	2,593	2,305	3,006	3,587	4,316	4,405	4,312	7,054	39,675
Germany	2,256	1,628	2,233	2,503	1,708	2,093	3,765	4,574	4,175	3,762	5,879	34,576
Netherlands	1,026	921	1,113	875	561	670	896	1,090	1,115	1,089	1,572	10,928
France	1,011	370	749	684	729	879	836	1,086	1,096	1,278	1,937	10,655
Switzerland	442	411	637	594	386	418	504	728	755	797	1,310	6,982
Italy	427	169	414	717	576	663	622	607	585	428	714	5,922
Belgium	468	275	454	413	383	397	541	590	590	461	585	5,157
Spain	323	168	339	577	492	431	524	580	390	272	305	4,401
Austria	186	147	166	202	114	229	338	395	434	353	631	3,195
Sweden	220	251	186	208	148	168	293	308	222	292	661	2,957
Ireland	180	124	258	297	206	188	143	324	245	235	249	2,449
Norway	441	445	211	93	85	82	114	211	185	146	324	2,337
Portugal	172	50	160	296	180	250	203	247	279	174	205	2,216
Denmark	172	201	151	105	92	103	125	188	209	239	537	2,122
Russia	169	89	187	237	226	282	268	250	175	87	83	2,053
Poland	105	68	94	187	196	243	192	222	225	156	138	1,826
Finland	58	116	79	77	74	78	74	112	109	102	143	1,022
Czech Republic	42	27	82	77	101	104	78	79	69	83	114	856
Serbia	78	25	18	42	51	52	112	60	53	9	16	516
Greece	57	15	22	27	66	69	75	26	51	45	59	512
Slovakia	10	10	45	60	50	18	16	40	48	33	33	363
Hungary	17	3	24	40	60	38	25	27	24	39	36	333
Bulgaria	26	7	40	39	52	29	34	12	35	22	8	304
Romania	15	6	48	45	36	27	31	11	6	10	24	259
Luxembourg	15	7	11	19	10	9	21	20	23	25	20	180
Slovenia	7	7	13	11	13	17	10	19	17	16	20	150
Ukraine	2	4	21	16	13	23	22	21	10	2	2	136
Croatia	9	10	18	12	5	7	9	15	19	18	13	135
Cyprus	4	6	8	14	4	5	18	3	8	27	24	121
Other Europe	37	57	63	60	53	91	39	49	42	27	19	537
Total	11,965	7,390	10,178	11,120	8,975	10,669	13,515	16,210	15,599	14,539	22,715	142,875

Table 7 Cont'd: Total Arrivals by Nationality and Age Group - 2014

Nationality	AGE GROUP											Total
	<=19	20-24	25-29	30-34	35-39	40-44	45-49	50-54	55-59	60-64	65+	
America:												
United States of America	4,011	3,278	3,073	2,979	2,258	2,393	2,827	3,595	4,346	5,690	15,511	49,961
Canada	561	552	667	663	470	445	605	944	1,182	1,384	2,139	9,612
Brazil	133	56	112	220	141	104	87	127	82	69	81	1,212
Mexico	72	31	59	77	30	53	42	48	23	23	52	510
Argentina	36	15	34	28	41	51	23	40	47	45	72	432
Chile	12	15	49	25	13	6	12	11	14	13	15	185
Cuba	5	2	5	14	22	36	38	33	9	6	5	175
Peru	11	4	14	18	18	46	13	17	9	3	6	159
Jamaica	9	6	17	3	2	23	14	17	12	20	5	128
Trinidad and Tobago	-	2	14	16	7	44	1	5	10	8	11	118
Colombia	4	1	7	8	21	4	10	7	20	4	1	87
Other America	18	13	22	27	33	19	36	32	34	18	35	287
Total	4,872	3,975	4,073	4,078	3,056	3,224	3,708	4,876	5,788	7,283	17,933	62,866
Asia:												
India	3,153	752	1,855	2,322	2,780	2,320	1,758	1,266	975	596	565	18,342
Japan	245	207	506	704	564	611	512	567	702	1,461	4,094	10,173
China	550	347	784	926	874	832	1,044	715	395	183	138	6,788
South Korea	256	144	173	225	216	243	323	440	471	367	344	3,202
Pakistan	463	142	143	230	361	254	211	166	102	37	47	2,156
Israel	131	106	141	152	207	240	188	196	219	204	277	2,061
Sri Lanka	417	92	167	158	227	158	132	134	196	75	67	1,823
Bangladesh	269	52	77	153	154	154	155	44	24	8	10	1,100
Singapore	58	37	74	75	94	96	81	94	103	64	64	840
Malaysia	34	24	38	48	44	45	70	80	53	49	27	512
Philippines	55	12	14	64	40	54	48	33	45	24	27	416
Turkey	33	6	20	42	60	57	33	41	20	19	5	336
Taiwan	13	2	7	15	23	23	11	27	25	49	68	263
Lebanon	5	21	40	41	14	20	8	66	12	-	1	228
Hong Kong	5	2	6	9	6	8	6	12	21	28	27	130
Thailand	14	-	5	19	21	14	8	9	4	1	6	101
Iran	3	8	9	20	3	4	8	8	3	5	6	77
Indonesia	5	1	5	7	9	9	8	10	4	10	7	75
Jordan	2	4	6	14	17	17	6	-	-	5	1	72
Other Asia	13	11	23	29	42	34	9	11	10	5	3	190
Total	5,724	1,970	4,093	5,253	5,756	5,193	4,619	3,919	3,384	3,190	5,784	48,885

Table 7 Cont'd: Total Arrivals by Nationality and Age Group - 2014

Nationality	AGE GROUP											Total
	<=19	20-24	25-29	30-34	35-39	40-44	45-49	50-54	55-59	60-64	65+	
Oceania:												
Australia	1457	1243	1588	1192	732	814	1051	1623	1853	2246	3858	17,657
New Zealand	215	167	318	241	144	174	204	286	343	391	600	3,083
Other Oceania	-	1	-	1	-	1	-	-	1	-	4	8
Total	1,672	1,411	1,906	1,434	876	989	1,255	1,909	2,197	2,637	4,462	20,748
Not Known	28	57	90	105	97	80	50	42	33	22	29	633
Total	163,487	153,706	263,550	336,293	298,857	250,270	181,190	146,080	112,033	78,087	98,969	2,082,521

Table 8: Total Arrivals by Nationality and Month - 2014

Nationality	MONTH												Total
	January	February	March	April	May	June	July	August	September	October	November	December	
Africa													
Zimbabwe	63,111	45,086	47,024	73,804	68,077	61,027	63,841	73,185	63,509	61,789	62,445	101,822	784,720
South Africa	52,674	39,236	44,329	55,614	48,461	51,447	58,957	44,929	51,174	51,918	42,007	59,641	600,387
Zambia	16,710	15,034	15,395	15,907	16,712	14,232	18,216	17,738	13,761	12,888	13,033	18,725	188,351
Namibia	12,973	10,128	12,020	15,666	14,201	11,439	14,037	14,962	12,870	13,860	12,625	17,672	162,453
Malawi	1,474	1,164	1,221	1,448	1,328	1,182	1,418	1,184	1,157	1,264	1,241	1,094	15,175
Lesotho	673	600	725	1,414	1,529	1,379	1,314	907	1,413	1,242	788	424	12,408
Swaziland	677	635	643	900	736	583	955	741	815	862	693	572	8,812
Tanzania	680	519	575	503	569	567	600	533	483	559	567	450	6,605
Kenya	867	455	495	562	766	464	500	479	402	479	478	531	6,478
Mozambique	471	362	346	416	478	409	397	317	405	410	351	253	4,615
Angola	206	105	130	125	249	509	297	109	289	442	112	170	2,743
Nigeria	310	184	192	193	389	197	187	104	109	125	104	57	2,151
Uganda	238	182	173	184	217	169	177	146	168	170	147	159	2,130
Mauritius	199	153	174	263	282	185	139	169	125	137	152	81	2,059
DRC	255	151	134	200	237	150	196	170	135	133	152	128	2,041
Ghana	110	75	85	131	141	82	76	75	58	62	84	76	1,055
Ethiopia	97	42	41	41	143	48	59	45	39	54	41	55	705
Egypt	31	18	10	25	215	22	11	24	24	56	16	12	464
Cameroon	23	36	38	56	81	29	33	38	20	39	37	10	440
Seychelles	18	12	28	28	55	20	40	7	13	12	17	4	254
Tunisia	5	2	1	-	110	7	1	2	-	-	88	-	216
Rwanda	28	4	6	8	79	12	3	10	17	11	6	5	189
Sierra Leone	26	14	16	27	25	14	20	7	7	8	4	4	172
Libya	15	14	5	6	60	24	6	7	10	2	15	3	167
Madagascar	15	5	3	7	52	4	13	8	13	10	16	5	151
Congo	5	4	6	10	62	8	10	16	4	12	3	2	142
Senegal	6	9	1	3	40	4	3	1	60	1	10	1	139
Burundi	1	9	5	3	59	2	5	8	3	11	17	5	128
Algeria	2	1	-	2	114	-	-	1	-	-	1	-	121
Cote D'voire	8	7	-	5	60	8	10	3	8	5	5	2	121
Sudan	4	8	15	4	34	7	4	4	2	10	8	11	111
Morocco	6	4	3	2	72	3	6	1	3	3	4	3	110
Other Africa	33	47	30	26	337	27	55	35	19	35	33	24	701
Total	151,951	114,305	123,869	167,583	155,970	144,260	161,586	155,965	147,115	146,609	135,300	202,001	1,806,514

Table 8 Cont'd: Total Arrivals by Nationality and Month - 2014

Nationality	MONTH												Total
	January	February	March	April	May	June	July	August	September	October	November	December	
Europe													
United Kingdom	3,086	3,034	2,981	3,653	2,989	2,803	4,430	3,995	3,558	3,699	3,024	2,423	39,675
Germany	1,662	1,769	2,747	3,122	2,860	1,836	2,251	4,318	4,153	4,578	3,384	1,896	34,576
Netherlands	514	455	518	750	799	639	1,706	1,460	1,185	1,251	1,017	634	10,928
France	497	457	713	1,018	1,108	494	979	1,373	773	1,431	1,143	669	10,655
Switzerland	356	311	409	680	505	307	702	613	830	1,018	890	361	6,982
Italy	257	247	249	443	369	323	592	1,619	575	577	384	287	5,922
Belgium	315	254	276	383	524	254	959	489	368	522	501	312	5,157
Spain	106	111	165	371	339	181	562	1,173	500	403	265	225	4,401
Austria	194	162	238	220	269	118	356	420	277	381	379	181	3,195
Sweden	312	441	261	409	152	120	140	110	151	226	378	257	2,957
Ireland	213	169	183	249	197	180	324	182	195	204	179	174	2,449
Norway	172	255	499	283	102	91	222	93	100	204	170	146	2,337
Portugal	169	169	175	329	205	187	160	213	205	161	125	118	2,216
Denmark	213	362	194	172	89	108	177	147	124	202	191	143	2,122
Russia	370	135	259	109	201	79	148	255	118	121	157	101	2,053
Poland	111	209	189	141	81	51	146	215	214	94	284	91	1,826
Finland	77	129	122	73	57	44	51	39	82	56	189	103	1,022
Czech Republic	42	51	77	84	54	34	46	79	69	132	154	34	856
Serbia	96	42	50	67	54	28	41	21	44	23	33	17	516
Greece	59	55	37	45	24	27	58	61	41	37	45	23	512
Slovakia	15	37	60	24	40	13	13	24	36	49	31	21	363
Hungary	30	34	30	15	31	19	29	27	26	31	50	11	333
Bulgaria	38	28	31	22	27	24	25	16	17	38	23	15	304
Romania	17	25	31	23	17	16	27	17	33	17	27	9	259
Luxembourg	6	4	4	15	12	1	21	60	7	7	32	11	180
Slovenia	-	20	5	44	12	9	21	18	8	3	-	10	150
Ukraine	11	19	27	6	15	6	9	9	5	3	11	15	136
Croatia	17	15	12	13	8	7	9	12	4	20	5	13	135
Cyprus	10	18	5	14	8	5	10	20	10	6	9	6	121
Other Europe	76	27	40	74	22	27	80	43	43	42	27	36	537
Total	9,041	9,044	10,587	12,851	11,170	8,031	14,294	17,121	13,751	15,536	13,107	8,342	142,875

Table 8 Cont'd: Total Arrivals by Nationality and Month - 2014

Nationality	MONTH												Total
	January	February	March	April	May	June	July	August	September	October	November	December	
America													
United States of America	2,557	2,630	4,130	4,331	5,470	4,856	5,856	5,119	4,886	4,414	3,124	2,588	49,961
Canada	659	696	920	892	734	503	876	648	1,019	1,087	1,026	552	9,612
Brazil	140	50	112	133	170	78	145	85	63	88	88	60	1,212
Mexico	22	8	38	61	55	50	74	46	48	22	18	68	510
Argentina	27	21	40	42	9	13	35	95	91	35	10	14	432
Chile	14	11	13	26	16	9	43	14	11	14	8	6	185
Cuba	9	16	16	17	37	25	6	5	5	12	24	3	175
Peru	11	14	15	31	12	13	11	9	14	8	15	6	159
Jamaica	25	8	12	8	13	6	13	8	11	4	5	15	128
Trinidad and Tobago	12	6	9	7	6	14	15	13	8	6	14	8	118
Colombia	4	3	2	4	17	11	15	7	8	7	2	7	87
Other America	32	25	23	35	17	20	18	32	30	26	9	20	287
Total	3,512	3,488	5,330	5,587	6,556	5,598	7,107	6,081	6,194	5,723	4,343	3,347	62,866
Asia													
India	3,219	1,580	1,438	2,014	1,633	1,264	1,316	1,076	1,397	1,218	1,134	1,053	18,342
Japan	567	472	908	782	994	709	1,092	1,168	1,125	1,571	437	348	10,173
China	679	864	724	659	519	442	618	477	527	526	384	369	6,788
South Korea	666	443	304	189	239	177	330	255	122	124	157	196	3,202
Pakistan	409	214	176	240	191	189	105	89	148	138	135	122	2,156
Israel	179	149	140	189	199	117	198	143	234	203	157	153	2,061
Sri Lanka	440	146	164	218	142	133	92	68	156	112	86	66	1,823
Bangladesh	181	119	140	129	98	85	47	66	76	67	52	40	1,100
Singapore	22	110	45	87	195	81	63	38	52	36	43	68	840
Malaysia	17	41	19	49	105	16	117	54	28	8	38	20	512
Philippines	86	29	21	26	43	25	21	37	50	24	15	39	416
Turkey	10	27	24	72	25	17	27	25	16	43	30	20	336
Taiwan	13	29	16	12	8	6	9	59	50	34	26	1	263
Lebanon	34	15	19	17	18	13	21	32	24	16	14	5	228
Hong Kong	19	60	4	15	2	1	-	15	-	3	4	7	130
Thailand	24	11	12	7	10	8	8	-	6	4	7	4	101
Iran	3	-	4	9	-	9	9	7	8	12	4	12	77
Indonesia	4	2	7	-	6	3	14	11	3	7	7	11	75
Jordan	9	7	6	9	4	9	4	7	9	3	3	2	72
Other Asia	9	14	18	6	33	30	16	10	21	12	14	7	190
Total	6,590	4,332	4,189	4,729	4,464	3,334	4,107	3,637	4,052	4,161	2,747	2,543	48,885

Table 8 Cont'd: Total Arrivals by Nationality and Month - 2014

Nationality	MONTH												Total
	January	February	March	April	May	June	July	August	September	October	November	December	
Oceania													
Australia	1,080	709	840	1,381	1,773	1,488	2,410	1,821	2,696	1,421	917	1,121	17,657
New Zealand	218	108	105	219	338	283	428	317	385	324	155	203	3,083
Other Oceania	-	2	2	-	2	1	-	-	-	-	-	1	8
Total	1,298	819	947	1,600	2,113	1,772	2,838	2,138	3,081	1,745	1,072	1,325	20,748
Not Known	51	36	51	106	38	41	42	50	59	90	63	6	633
Total	172,443	132,024	144,973	192,456	180,311	163,036	189,974	184,992	174,252	173,864	156,632	217,564	2,082,521

Table 9: Total Arrivals by Country of Residence and Month - 2014

Country of Residence	MONTH												Total
	January	February	March	April	May	June	July	August	September	October	November	December	
Africa:													
Botswana	9,981	8,032	8,787	11,051	9,948	9,635	10,339	9,200	11,040	9,781	10,000	10,249	118,043
Zimbabwe	61,742	43,791	44,614	67,840	64,861	56,650	57,737	63,576	54,264	53,961	53,805	84,840	707,681
South Africa	53,017	38,152	43,520	55,882	47,765	51,306	59,427	47,381	52,632	53,286	43,788	68,384	614,540
Zambia	15,910	14,464	14,988	16,348	15,989	13,533	17,708	17,194	13,198	12,614	12,895	18,241	183,082
Namibia	13,338	10,134	12,022	15,934	14,472	11,516	14,112	15,251	13,067	13,814	12,616	18,062	164,338
Lesotho	473	491	612	1,262	1,393	1,252	1,159	816	1,278	1,119	698	413	10,966
Malawi	1,022	815	839	1,037	894	817	1,015	884	832	924	941	881	10,901
Swaziland	520	527	506	802	648	472	787	655	698	681	551	519	7,366
Tanzania	448	423	462	394	482	454	458	425	349	428	476	379	5,178
Kenya	454	284	301	339	565	287	332	330	300	306	360	404	4,262
Mozambique	321	264	230	286	374	318	300	244	275	307	269	205	3,393
Angola	173	86	103	103	223	466	275	92	265	412	90	142	2,430
Uganda	122	127	103	111	149	114	121	115	115	123	113	100	1,413
Mauritius	88	75	97	159	194	119	85	112	73	76	103	51	1,232
DRC	103	61	75	105	157	71	127	91	67	62	78	83	1,080
Nigeria	114	63	74	72	247	94	78	29	38	49	48	34	940
Ethiopia	47	47	40	30	141	27	42	41	28	49	38	49	579
Ghana	34	28	27	60	95	38	35	41	20	23	64	48	513
Somalia	26	25	34	48	48	37	52	30	28	38	33	35	434
Egypt	9	8	1	13	189	7	15	18	17	47	9	11	344
Cameroon	10	22	25	31	64	23	15	29	8	26	22	8	283
Tunisia	5	9	6	4	107	3	1	3	2	1	86	2	229
Seychelles	10	13	27	23	49	19	29	6	10	7	16	2	211
Rwanda	20	5	7	8	78	11	4	3	15	8	4	4	167
Sudan	3	8	22	6	42	11	8	3	4	12	13	18	150
Madagascar	8	3	1	6	49	6	18	8	12	7	15	6	139
Senegal	5	6	2	6	36	3	4	7	50	2	13	-	134
Libya	10	6	12	18	8	10	16	19	13	5	8	3	128
Burundi	6	11	2	2	74	13	4	1	2	1	6	1	123
Sierra Leone	1	7	6	9	52	1	4	8	2	7	15	4	116
Algeria	12	7	8	21	13	9	19	5	5	6	8	2	115
Cote D'voire	1	1	-	-	106	-	-	-	-	1	-	-	109
Congo	4	5	1	1	53	8	10	4	8	4	4	1	103
Morocco	1	-	1	10	60	2	5	14	2	6	1	1	103
Other Africa	20	41	25	33	325	27	34	35	13	32	29	28	642
Total	158,058	118,041	127,580	172,054	159,950	147,359	164,375	156,670	148,730	148,225	137,215	203,210	1,841,467

Table 9: Total Arrivals by Country of Residence and Month - 2014

Country of Residence	MONTH												Total
	January	February	March	April	May	June	July	August	September	October	November	December	
Europe:													
Germany	1,394	1,614	2,527	2,893	2,637	1,685	2,123	4,272	4,193	4,436	3,300	1,769	32,843
United Kingdom	1,912	2,147	2,053	2,649	2,004	1,828	3,451	3,412	2,889	2,921	2,362	1,902	29,530
Netherlands	444	387	471	671	736	556	1,643	1,483	1,218	1,311	1,044	636	10,600
France	427	396	646	922	1,037	421	934	1,415	728	1,365	1,116	609	10,016
Switzerland	362	297	404	676	485	296	736	629	858	1,040	897	361	7,041
Italy	208	204	183	397	302	266	557	1,618	543	555	351	252	5,436
Belgium	255	199	239	320	492	211	927	459	345	456	463	321	4,687
Spain	101	106	138	345	317	170	705	1,647	759	388	242	206	5,124
Austria	170	143	199	178	227	103	313	376	296	358	334	171	2,868
Sweden	270	415	222	373	121	97	122	83	117	203	382	243	2,648
Norway	153	242	500	275	93	81	220	85	95	208	172	137	2,261
Denmark	197	351	197	150	73	89	167	137	121	220	185	129	2,016
Bosnia and Herzegovina	165	274	190	190	129	265	118	123	148	59	69	167	1,897
Russia	338	130	250	94	162	51	166	239	105	109	145	85	1,874
Ireland	137	112	127	184	130	126	238	136	128	149	112	136	1,715
Poland	95	193	177	134	73	44	128	204	205	85	274	79	1,691
Portugal	90	82	98	243	114	118	101	158	142	90	66	65	1,367
Finland	65	122	129	60	43	41	42	43	68	57	200	94	964
Czech Republic	41	48	75	80	54	34	51	87	72	139	165	52	898
Slovakia	15	34	58	33	36	13	16	23	35	47	25	14	349
Greece	38	30	27	31	12	10	47	54	25	25	35	15	349
Hungary	19	30	24	14	28	18	27	23	20	30	47	8	288
Romania	16	19	28	19	16	12	24	17	27	18	28	11	235
Serbia	41	13	22	33	20	9	12	12	15	29	30	10	246
Luxembourg	6	5	4	16	12	1	20	63	10	6	31	11	185
Bouvet Island	16	13	13	18	9	18	14	9	23	13	14	12	172
Bulgaria	20	14	21	14	11	15	7	9	16	23	14	3	167
Iceland	19	8	8	29	10	11	9	13	7	13	17	22	166
Slovenia	-	15	5	36	11	6	20	14	7	3	-	11	128
Ukraine	4	17	26	3	15	2	13	10	6	3	6	13	118
Other Europe	83	49	35	62	45	38	108	93	65	71	45	47	741
Total	7,101	7,709	9,096	11,142	9,454	6,635	13,059	16,946	13,286	14,430	12,171	7,591	128,620

Table 9 Cont'd: Total Arrivals by Country of Residence and Month - 2014

Country of Residence	MONTH												Total
	January	February	March	April	May	June	July	August	September	October	November	December	
America:													
United States	2,214	2,349	3,765	3,887	5,055	4,547	5,604	5,056	4,974	4,355	2,987	2,636	47,429
Canada	550	615	849	804	664	428	769	606	969	1,062	989	513	8,818
Brazil	112	51	104	121	139	70	127	100	64	83	88	50	1,109
Mexico	22	6	38	59	50	51	72	43	49	20	18	68	496
Argentina	27	17	32	29	6	5	30	88	97	24	6	7	368
Bolivia	22	53	17	27	26	31	23	26	20	17	21	29	312
Chile	16	7	12	26	16	8	42	13	13	16	6	5	180
Bahamas	13	7	12	16	8	2	17	6	11	5	12	21	130
Peru	9	10	11	22	8	8	6	6	8	3	11	8	110
Cuba	2	14	9	14	20	11	7	2	2	7	15	2	105
Jamaica	15	6	7	8	7	4	8	10	6	8	3	12	94
Colombia	6	3	2	1	17	11	11	5	5	7	1	6	75
Trinidad and Tobago	7	3	6	7	7	7	9	7	4	4	7	7	75
Other America	26	22	22	27	18	18	20	39	41	22	15	23	293
Total	3,041	3,163	4,886	5,048	6,041	5,201	6,745	6,007	6,263	5,633	4,179	3,387	59,594
Asia:													
Japan	508	425	854	717	947	670	1,034	1,123	1,077	1,505	401	326	9,587
India	976	573	570	744	620	561	595	479	536	570	537	566	7,327
South Korea	597	379	247	142	191	139	234	209	94	93	126	148	2,599
China	169	208	254	229	161	164	304	233	214	208	144	154	2,442
Israel	147	126	117	155	176	103	165	133	214	174	131	144	1,785
Pakistan	115	49	63	86	64	73	60	45	62	44	72	69	802
Singapore	26	106	40	77	190	73	64	34	46	29	39	72	796
Sri Lanka	87	38	54	67	49	52	35	33	59	39	44	23	580
Yemen	43	35	24	37	16	45	29	131	82	5	27	39	513
Bangladesh	90	54	50	41	43	42	20	23	36	35	27	19	480
Hong Kong	35	159	16	53	18	6	26	47	22	12	8	16	418
United Arab Emirates	27	14	37	28	30	18	40	24	16	22	32	19	307
Turkey	4	20	15	57	16	18	23	21	13	41	29	16	273
Philippines	21	12	15	15	29	10	10	23	22	14	9	28	208
Taiwan	3	19	6	8	2	4	8	60	40	26	25	-	201
Lebanon	10	6	12	18	8	10	16	19	13	5	8	8	133
Thailand	8	11	11	7	10	10	9	2	7	4	6	2	87
Afghanistan	5	2	7	4	7	3	3	12	7	7	8	3	68
Indonesia	3	1	-	1	6	4	14	11	2	5	8	8	63
Other Asia	17	31	26	27	39	38	49	41	27	26	20	18	359
Total	2,891	2,268	2,418	2,513	2,622	2,043	2,738	2,703	2,589	2,864	1,701	1,678	29,028

Table 9 Cont'd: Total Arrivals by Country of Residence and Month - 2014

Country of Residence	MONTH												Total
	January	February	March	April	May	June	July	August	September	October	November	December	
Oceania:													
Australia	1,006	644	779	1,312	1,709	1,394	2,308	1,834	2,683	1,351	920	1,129	17,069
New Zealand	183	79	91	171	295	253	382	286	327	308	131	166	2,672
Vanuatu	18	32	16	42	96	12	112	48	29	5	36	21	467
Solomon Islands	19	4	9	18	12	13	19	17	21	10	10	18	170
Myanmar	10	8	6	4	3	3	2	11	13	10	16	28	114
Other Oceania	-	2	-	-	3	2	1	-	2	-	2	-	12
Total	1,236	769	901	1,547	2,118	1,677	2,824	2,196	3,075	1,684	1,115	1,362	20,504
Not Known	116	74	92	152	126	121	233	470	309	1,028	251	336	3,308
Total	172,443	132,024	144,973	192,456	180,311	163,036	189,974	184,992	174,252	173,864	156,632	217,564	2,082,521

Table 10: Total Arrivals by Border Post and Continent of Nationality - 2014

Border Post	CONTINENT OF NATIONALITY						Total	% Distribution
	Africa	Europe	America	Asia	Oceania	Not Stated		
Ramokgwebana Road	361,538	15,579	8,099	4,041	2,553	18	391,828	18.8
Tlokweng Gate	322,750	11,547	4,135	9,072	1,026	47	348,577	16.7
Ramatlabama Road	261,856	1,250	645	2,087	95	29	265,962	12.8
Martin's Drift	178,059	8,685	1,451	1,103	1,611	9	190,918	9.2
Pioneer Gate	164,489	3,317	826	2,820	238	8	171,698	8.2
Kazungula Ferry	117,750	12,901	9,361	1,662	3,338	275	145,287	7.0
Mamuno	84,826	7,772	1,007	662	885	4	95,156	4.6
Sir Seretse Khama Airport	56,226	14,350	6,391	15,314	1,254	37	93,572	4.5
Kazungula Road	34,993	24,313	14,761	9,253	4,431	5	87,756	4.2
Ramotswa	47,056	1,421	222	735	82	2	49,518	2.4
Ngoma	29,723	13,119	1,010	151	824	1	44,828	2.2
Matsiloje	34,237	81	2	-	6	4	34,330	1.6
Sikwane	30,030	660	149	52	34	1	30,926	1.5
Maun Airport	3,490	9,125	6,468	419	1,682	3	21,187	1.0
Kasane	11,848	3,243	2,656	158	862	3	18,770	0.9
Mohembo	10,263	5,919	598	53	734	2	17,569	0.8
Maitengwe	16,686	20	-	2	1	-	16,709	0.8
Parrs Halt	12,397	564	62	20	54	2	13,099	0.6
Kasane Airport	1,804	2,293	3,323	670	585	2	8,677	0.4
Tsabong	7,449	204	11	2	6	-	7,672	0.4
Central Border	1,935	2,219	842	47	153	171	5,367	0.3
Point Drift	2,643	1,298	308	10	87	1	4,347	0.2
Francistown Airport	2,121	482	114	449	62	1	3,229	0.2
Plaatjan	2,412	575	93	16	39	1	3,136	0.2
Bray	2,807	29	0	0	0	1	2,837	0.1
Dobe	490	1,095	12	4	16	2	1,619	0.1
Ramokgwebana rail	1,271	151	74	9	30	0	1,535	0.1
Middlepits	1,396	50	3	0	6	1	1,456	0.1
Bokspits	1,318	63	20	2	18	0	1,421	0.1
Zanzibar	554	126	10	1	3	1	695	0.0
Two Rivers	472	155	7	0	15	1	650	0.0
Limpopo Valley	159	177	192	12	10	0	550	0.0
Phitshane Molopo	516	-	-	-	-	-	516	0.0
Francistown Airport	237	49	8	49	8	1	352	0.0
Makopong	293	3	0	0	0	0	296	0.0
Karowe Airstrip	221	7	6	8	0	0	242	0.0
Ramatlabama Road	88	9	0	0	0	0	97	0.0
Selibe Phikwe Airport	51	9	0	1	0	0	61	0.0
Jwaneng	39	6	0	1	0	0	46	0.0
Orapa	21	9	0	0	0	0	30	0.0
Total	1,806,514	142,875	62,866	48,885	20,748	633	2,082,521	100.0

Table 11. Total Arrivals by Border Post and Month of Travel - 2014

Border Post	MONTH												Total
	January	February	March	April	May	June	July	August	September	October	November	December	
Ramokgwebana Road	36,600	23,632	23,486	39,312	37,202	31,986	32,716	38,493	29,255	29,979	27,983	41,184	391,828
Tlokweng Gate	27,082	24,751	28,115	35,374	30,680	27,958	32,896	17,848	31,379	32,699	24,455	35,340	348,577
Ramatlabama Road	20,624	16,499	21,081	22,741	22,654	22,600	20,723	20,251	22,642	23,678	22,370	30,099	265,962
Martin's Drift	14,767	13,028	6,264	16,327	14,751	17,248	17,612	18,668	17,865	15,291	15,076	24,021	190,918
Pioneer Gate	12,283	11,189	14,723	16,150	14,159	14,155	15,218	15,784	14,163	12,543	14,289	17,042	171,698
Kazungula Ferry	11,612	10,306	11,204	13,619	12,582	10,171	15,650	16,328	10,581	10,581	9,523	13,130	145,287
Mamuno	9,346	5,440	6,925	9,298	7,900	6,654	9,496	9,242	7,000	8,383	6,176	9,296	95,156
Sir Seretse Khama Airport	7,945	7,350	8,226	7,278	9,618	8,085	8,450	8,256	7,114	7,368	8,119	5,763	93,572
Kazungula Road	6,911	5,181	6,687	7,801	8,274	3,823	11,127	10,059	6,505	8,702	6,158	6,528	87,756
Ramotswa	4,557	2,815	3,294	4,706	3,772	3,729	4,201	4,409	4,317	4,463	4,057	5,198	49,518
Ngoma	3,116	2,373	2,516	3,784	4,206	3,472	5,594	5,556	4,121	3,319	2,245	4,526	44,828
Matsiloje	6,278	1,749	1,971	3,208	2,531	2,442	2,739	2,966	2,490	2,321	1,975	3,660	34,330
Sikwane	2,260	1,718	2,072	3,565	2,446	2,328	2,622	3,287	2,636	2,243	2,164	3,585	30,926
Maun Airport	988	1,227	1,769	2,226	2,369	2,024	718	1,052	2,590	2,438	2,205	1,581	21,187
Kasane	1,410	1,298	1,620	1,388	1,616	1,049	1,819	1,458	1,736	1,919	1,489	1,968	18,770
Mohembo	1,037	438	1,082	1,561	1,373	1,237	2,436	2,233	1,635	1,201	1,523	1,813	17,569
Maitengwe	3,148	836	929	1,626	1,150	1,048	1,309	1,620	1,257	1,077	953	1,756	16,709
Parris Halt	155	243	339	6	247	4	318	1,262	1,428	881	1,570	6,646	13,099
Kasane Airport	463	502	765	524	715	574	942	1,174	991	1,053	505	469	8,677
Tsabong	558	374	656	694	806	581	703	643	618	516	641	882	7,672
Central Border	429	439	590	428	568	479	477	563	610	249	512	23	5,367
Point Drift	161	9	288	-	-	-	197	590	688	917	764	733	4,347
Francistown Airport	237	209	219	261	303	292	305	274	279	279	326	245	3,229
Plaatjan	101	1	1	-	-	345	372	760	454	378	189	535	3,136
Bray	61	1	-	2	101	126	159	412	486	455	460	574	2,837
Dobe	1	3	-	133	82	81	289	492	331	-	96	111	1,619
Ramokgwebana rail	165	1	3	49	108	324	450	429	2	1	2	1	1,535
Middlepits	1	1	3	267	2	-	62	215	197	223	206	279	1,456
Bokspits	111	18	-	1	1	50	193	220	255	206	219	147	1,421
Zanzibar	-	1	-	-	-	-	1	-	165	216	115	197	695
Two Rivers	1	2	-	72	73	-	44	91	104	164	-	99	650
Limpopo Valley	-	-	1	-	-	2	1	62	305	105	11	63	550
Phitshane Molopo	6	389	121	-	-	-	-	-	-	-	-	-	516
Francistown Airport	-	-	-	1	-	1	-	131	-	-	219	-	352
Makopong	6	-	-	-	16	2	36	65	53	12	37	69	296
karowe Airport	22	1	23	54	-	63	53	26	-	-	-	-	242
Ramatlabama Road	-	-	-	-	-	97	-	-	-	-	-	-	97
Selibe Phibe Airport	-	-	-	-	1	-	26	34	-	-	-	-	61
Jwanweng	-	-	-	-	5	6	3	32	-	-	-	-	46
Orapa	1	-	-	-	-	-	17	7	-	4	-	1	30
Total	172,443	132,024	144,973	192,456	180,311	163,036	189,974	184,992	174,252	173,864	156,632	217,564	2,082,521

Table 12: Total Arrivals by Month of Arrival and Mode of Travel - 2014

Month	MODE OF TRAVEL		Total
	Road	Air	
January	162,787	9,656	172,443
February	122,734	9,290	132,024
March	133,970	11,003	144,973
April	182,111	10,345	192,456
May	167,300	13,011	180,311
June	151,990	11,046	163,036
July	179,459	10,515	189,974
August	173,943	11,049	184,992
September	162,973	11,279	174,252
October	162,616	11,248	173,864
November	145,247	11,385	156,632
December	207,793	9,771	217,564
Total	1,952,923	129,598	2,082,521
% Distribution	93.8	6.2	100.0

Table 13: Total Arrivals by Month and Quarter for Years 2000 - 2014

Month	2000	2001	2002	2003	2004	2005	2006	2007
January	177,314	158,245	164,526	165,224	178,461	188,193	171,519	200,776
February	124,349	116,630	135,340	146,459	151,140	152,307	79,914	121,972
March	194,500	134,999	154,379	160,986	160,143	177,844	165,986	157,346
1st Quarter	496,163	409,874	454,245	472,669	489,744	518,344	417,419	480,094
April	145,192	135,026	158,707	168,918	173,633	132,755	133,006	169,768
May	160,500	135,965	149,792	164,901	160,701	145,624	123,065	127,144
June	205,696	145,543	152,151	168,511	155,681	168,295	135,013	162,750
2nd Quarter	511,388	416,534	460,650	502,330	490,015	446,674	391,084	459,662
July	301,203	136,113	166,001	184,865	175,194	147,845	157,743	188,142
August	143,945	159,270	169,209	185,390	178,002	143,736	165,530	222,798
September	185,146	158,513	156,119	174,374	164,467	200,444	203,344	203,212
3rd Quarter	630,294	453,896	491,329	544,629	517,663	492,025	526,617	614,152
October	188,457	153,963	163,895	170,984	170,299	188,131	140,969	215,857
November	138,095	117,820	159,823	179,793	154,557	145,042	160,160	212,009
December	180,973	179,234	187,877	196,114	154,471	197,811	183,808	219,179
4th Quarter	507,525	451,017	511,595	546,891	479,327	530,984	484,937	647,045
Total	2,145,370	1,731,321	1,917,819	2,066,519	1,976,749	1,988,027	1,820,057	2,200,953

* 2011 figures not available

Table 13 Cont'd: Total Arrivals by Month and Quarter for Years 2000 - 2014

Month	2008	2009	2010	2012	2013	2014
January	162,070	214,663	198,321	161,588	189,937	172,443
February	170,089	164,953	192,746	161,595	189,363	132,024
March	196,316	189,057	202,023	165,311	197,909	144,973
1st Quarter	528,475	568,673	593,090	488,494	577,209	449,440
April	217,363	202,157	285,284	233,919	238,222	192,456
May	219,532	199,215	234,688	194,658	290,845	180,311
June	200,195	175,247	465,023	371,877	376,566	163,036
2nd Quarter	637,090	576,619	984,995	800,454	905,633	535,803
July	236,655	203,378	379,354	304,144	245,784	189,974
August	230,385	213,779	233,852	192,063	208,480	184,992
September	235,308	191,393	201,490	164,375	173,206	174,252
3rd Quarter	702,348	608,550	814,696	660,582	627,470	549,218
October	237,691	176,593	307,214	252,577	137,281	173,864
November	220,919	180,463	178,688	146,568	137,119	156,632
December	282,363	225,390	329,079	263,880	213,446	217,564
4th Quarter	740,973	582,446	814,981	663,025	487,846	548,060
Total	2,608,886	2,336,288	3,207,762	2,612,555	2,598,158	2,082,521

* 2011 figures not available

Table 14: Total Departures by Nationality and Sex - 2014

Nationality	SEX		Total	% Distribution
	Male	Female		
Africa:				
Zimbabwe	449,484	342,578	792,062	36.9
South Africa	453,532	194,393	647,925	30.2
Zambia	122,968	59,236	182,204	8.5
Namibia	108,849	49,921	158,770	7.4
Malawi	12,089	3,442	15,531	0.7
Lesotho	5,591	7,501	13,092	0.6
Swaziland	6,932	2,354	9,286	0.4
Tanzania	5,494	1,506	7,000	0.3
Kenya	4,438	2,158	6,596	0.3
Mozambique	3,705	1,174	4,879	0.2
Angola	1,921	874	2,795	0.1
Nigeria	1,685	587	2,272	0.1
Mauritius	1,434	775	2,209	0.1
Democratic Republic of Congo	1,381	735	2,116	0.1
Uganda	1,477	548	2,025	0.1
Ghana	761	375	1,136	0.1
Ethiopia	364	242	606	0.0
Egypt	337	133	470	0.0
Cameroon	324	126	450	0.0
Seychelles	145	119	264	0.0
Tunisia	172	33	205	0.0
Rwanda	121	56	177	0.0
Sierra Leone	122	42	164	0.0
Libya	127	31	158	0.0
Senegal	128	20	148	0.0
Algeria	110	35	145	0.0
Madagascar	76	64	140	0.0
Sudan	107	25	132	0.0
Congo	104	27	131	0.0
Burundi	115	13	128	0.0
Cote D'ivoire	80	39	119	0.0
Morocco	77	31	108	0.0
Other africa	565	195	760	0.0
Total	1,184,815	669,388	1,854,203	86.3

Table 14 Cont'd: Total Departures by Nationality and Sex - 2014

Nationality	SEX		Total	% Distribution
	Male	Female		
Asia:				
India	12,956	6,271	19,227	0.9
Japan	4,392	5,967	10,359	0.5
China	5,104	2,224	7,328	0.3
South Korea	1,775	1,500	3,275	0.2
Pakistan	1,457	692	2,149	0.1
Israel	1,579	534	2,113	0.1
Sri Lanka	1,126	663	1,789	0.1
Bangladesh	760	414	1,174	0.1
Singapore	418	430	848	0.0
Malaysia	241	278	519	0.0
Philippines	225	201	426	0.0
Thailand	233	173	406	0.0
Turkey	241	102	343	0.0
Taiwan	159	155	314	0.0
Indonesia	95	55	150	0.0
Hong Kong	67	60	127	0.0
Other asia	190	116	306	0.0
Total	31,018	19,835	50,853	2.4

Table 14 Cont'd: Total Departures by Nationality and Sex - 2014

Nationality	SEX		Total	% Distribution
	Male	Female		
Europe:				
United Kingdom	23,515	18,350	41,865	1.9
Germany	18,126	17,121	35,247	1.6
Netherlands	5,848	5,711	11,559	0.5
France	5,695	5,075	10,770	0.5
Switzerland	3,540	3,823	7,363	0.3
Italy	3,207	2,866	6,073	0.3
Belgium	3,000	2,269	5,269	0.2
Spain	2,358	2,486	4,844	0.2
Austria	1,798	1,522	3,320	0.2
Sweden	1,532	1,435	2,967	0.1
Ireland	1,406	1,135	2,541	0.1
Norway	1,014	1,387	2,401	0.1
Portugal	1,452	862	2,314	0.1
Denmark	1,097	1,064	2,161	0.1
Russia	1,110	940	2,050	0.1
Poland	895	875	1,770	0.1
Finland	468	521	989	0.0
Czech Republic	548	373	921	0.0
Serbia	314	196	510	0.0
Greenland	301	204	505	0.0
Slovakia	217	164	381	0.0
Bulgaria	168	170	338	0.0
Hungary	170	162	332	0.0
Romania	168	97	265	0.0
Luxembourg	301	136	437	0.0
Slovenia	57	94	151	0.0
Ukraine	68	80	148	0.0
Croatia	65	70	135	0.0
Other Europe	384	326	710	0.0
Total	78,822	69,514	148,336	6.9

Table 14 Cont'd: Total Departures by Nationality and Sex - 2014

Nationality	SEX		Total	% Distribution
	Male	Female		
America:				
United States	23,119	28,179	51,298	2.4
Canada	4,578	5,212	9,790	0.5
Brazil	603	586	1,189	0.1
Mexico	221	280	501	0.0
Argentina	250	186	436	0.0
Chile	91	97	188	0.0
Peru	104	73	177	0.0
Cuba	79	53	132	0.0
Jamaica	86	46	132	0.0
Trinidad and Tobago	59	58	117	0.0
Other america	193	161	354	0.0
Total	29,383	34,931	64,314	3.0
Oceania:				
Australia	8,332	9,624	17,956	0.8
New Zealand	1,675	1,562	3,237	0.2
other oceania	15	7	22	0.0
Total	10,022	11,193	21,215	1.0
Not known	3,977	4,554	8,531	0.4
Total	1,338,037	809,415	2,147,452	100.0

Table 15: Total Departures by Country of Residence and Sex - 2014

Country of Residence	Sex		Total	
	Male	Female	Number	% Distribution
Africa:				
Botswana	116,769	61,061	177,830	8.3
Zimbabwe	376,677	320,238	696,915	32.5
South Africa	459,783	183,309	643,092	29.9
Zambia	120,016	58,189	178,205	8.3
Namibia	111,587	51,550	163,137	7.6
Lesotho	4,817	6,737	11,554	0.5
Malawi	8,342	2,227	10,569	0.5
Swaziland	5,630	2,115	7,745	0.4
Tanzania	4,282	928	5,210	0.2
Kenya	2,661	1,206	3,867	0.2
Mozambique	2,577	889	3,466	0.2
Angola	1,693	802	2,495	0.1
Cote D'Ivoire	1,365	513	1,878	0.1
Uganda	860	330	1,190	0.1
Mauritius	718	401	1,119	0.1
Democratic Republic of Congo	534	289	823	0.0
Nigeria	557	217	774	0.0
Ghana	287	157	444	0.0
Ethiopia	260	153	413	0.0
Somalia	275	112	387	0.0
Egypt	229	95	324	0.0
Cameroon	178	71	249	0.0
Tunisia	187	35	222	0.0
Seychelles	113	98	211	0.0
Rwanda	107	55	162	0.0
Sudan	119	32	151	0.0
Algeria	105	36	141	0.0
Senegal	117	23	140	0.0
Burundi	107	16	123	0.0
Madagascar	74	45	119	0.0
Congo	78	26	104	0.0
Libya	87	17	104	0.0
Morocco	73	30	103	0.0
Other africa	580	193	773	0.0
Total	1,221,844	692,195	1,914,039	89.1

Table 15 Cont'd: Total Departures by Country of Residence and Sex - 2014

Country of Residence	Sex		Total	
	Male	Female	Number	% Distribution
Asia:				
Japan	4,060	5,785	9,845	0.5
India	3,760	1,555	5,315	0.2
South Korea	1,386	1,209	2,595	0.1
China	1,216	643	1,859	0.1
Singapore	389	427	816	0.0
Pakistan	340	158	498	0.0
Malaysia	226	253	479	0.0
Hong Kong	222	214	436	0.0
Bangladesh	245	137	382	0.0
Sri Lanka	203	146	349	0.0
Yemen	199	122	321	0.0
United Arab Emirates	227	84	311	0.0
Turkey	164	93	257	0.0
Taiwan	108	123	231	0.0
Thailand	98	89	187	0.0
Philippines	70	80	150	0.0
Indonesia	67	46	113	0.0
Other Asia	224	138	362	0.0
Total	13,204	11,302	24,506	1.1

Table 15 Cont'd: Total Departures by Country of Residence and Sex - 2014

Country of Residence	Sex		Total	
	Male	Female	Number	% Distribution
Europe:				
Germany	16,372	15,987	32,359	1.5
United Kingdom	15,197	13,447	28,644	1.3
Netherlands	5,250	5,300	10,550	0.5
France	5,119	4,718	9,837	0.5
Switzerland	3,523	3,725	7,248	0.3
Italy	2,761	2,614	5,375	0.3
Spain	2,248	2,384	4,632	0.2
Belgium	2,559	2,084	4,643	0.2
Austria	1,480	1,399	2,879	0.1
Sweden	1,331	1,297	2,628	0.1
Norway	956	1,344	2,300	0.1
Denmark	978	1,025	2,003	0.1
Bosnia and Herzegovina	1,025	822	1,847	0.1
Russia	952	864	1,816	0.1
Poland	815	819	1,634	0.1
Ireland	860	742	1,602	0.1
Portugal	762	520	1,282	0.1
Finland	410	469	879	0.0
Czech Republic	533	365	898	0.0
Slovakia	209	163	372	0.0
Greenland	176	139	315	0.0
Hungary	154	125	279	0.0
Romania	142	93	235	0.0
Luxembourg	231	188	419	0.0
Bulgaria	84	88	172	0.0
Iceland	80	71	151	0.0
Slovenia	50	76	126	0.0
Serbia	74	49	123	0.0
Ukraine	49	66	115	0.0
Other Europe	435	352	787	0.0
Total	64,815	61,335	126,150	5.9

Table 15 Cont'd: Total Departures by Country of Residence and Sex - 2014

Country of Residence	Sex		Total	
	Male	Female	Number	% Distribution
America:				
United States	21,160	26,158	47,318	2.2
Canada	4,024	4,773	8,797	0.4
Brazil	541	529	1,070	0.0
Mexico	222	273	495	0.0
Argentina	184	146	330	0.0
Bolivia	164	118	282	0.0
Chile	88	94	182	0.0
Bahamas	67	72	139	0.0
Peru	60	56	116	0.0
Cuba	50	24	74	0.0
Trinidad and Tobago	31	38	69	0.0
Jamaica	36	28	64	0.0
Colombia	28	35	63	0.0
Other america	139	114	253	0.0
Total	26,794	32,458	59,252	2.8
Oceania:				
Australia	7,941	9,424	17,365	0.8
New Zealand	1,366	1,387	2,753	0.1
Other oceania	194	74	268	0.0
Total	9,501	10,885	20,386	0.9
Not Known	1,879	1,240	3,119	0.1
Total	1,338,037	809,415	2,147,452	100.0

Table 16: Total Departures by Nationality and Age Group - 2014

Nationality	AGE GROUP											Total
	<=19	20-24	25-29	30-34	35-39	40-44	45-49	50-54	55-59	60-64	65+	
Africa:												
Zimbabwe	56,898	67,657	124,432	164,856	139,211	106,975	58,073	33,061	21,527	11,019	8,353	792,062
South Africa	58,442	30,955	55,145	72,103	76,409	82,552	75,259	69,115	54,838	36,296	36,811	647,925
Zambia	7,017	15,123	27,743	39,543	35,990	25,370	14,339	8,711	4,771	2,227	1,370	182,204
Namibia	14,402	15,763	22,723	25,056	21,855	17,866	14,330	11,249	7,786	3,965	3,775	158,770
Malawi	999	860	1,588	2,812	2,755	2,522	1,591	1,009	852	271	272	15,531
Lesotho	722	963	1,959	2,477	2,230	1,638	1,181	880	499	354	189	13,092
Swaziland	549	929	1,838	1,714	1,528	958	772	488	274	107	129	9,286
Tanzania	444	367	801	1,003	1,461	955	582	540	402	324	121	7,000
Kenya	756	292	503	790	1,204	1,074	789	610	314	163	101	6,596
Mozambique	353	244	444	731	903	906	541	329	283	72	73	4,879
Angola	515	646	281	249	245	227	244	172	139	49	28	2,795
Nigeria	354	105	104	193	318	347	265	296	204	52	34	2,272
Mauritius	290	132	138	213	192	255	225	261	279	127	97	2,209
DRC	396	73	112	321	470	235	203	142	81	57	26	2,116
Uganda	138	95	197	394	369	240	209	160	108	71	44	2,025
Ghana	127	41	58	106	155	95	98	156	130	95	75	1,136
Ethiopia	142	20	25	61	73	113	73	40	26	14	19	606
Egypt	137	43	45	31	57	36	38	39	14	14	16	470
Cameroon	54	22	35	67	69	78	50	45	22	3	5	450
Seychelles	32	16	24	37	15	18	48	27	35	7	5	264
Tunisia	61	10	19	26	18	18	17	17	9	9	1	205
Rwanda	45	14	19	20	38	17	10	11	2	1	-	177
Sierra Leone	7	6	9	12	29	23	61	12	4	-	1	164
Libya	39	10	12	20	13	6	22	12	10	8	6	158
Senegal	16	11	17	14	17	16	15	11	16	13	2	148
Algeria	71	1	8	9	12	8	9	6	13	6	2	145
Madagascar	32	3	11	14	12	7	18	15	25	2	1	140
Sudan	29	10	9	11	12	17	11	9	14	6	4	132
Congo	32	5	2	18	8	18	18	9	13	6	2	131
Burundi	16	13	18	8	19	30	12	4	2	6	-	128
Cote D'ivoire	36	2	5	10	9	12	7	24	3	3	8	119
Morocco	49	3	6	9	9	13	7	5	2	3	2	108
Other africa	217	24	19	57	85	100	77	98	54	18	11	760
Total	143,417	134,458	238,349	312,985	285,790	242,745	169,194	127,563	92,751	55,368	51,583	1,854,203

Table 16 Cont'd: Total Departures by Nationality and Age Group - 2014

Nationality	AGE GROUP											Total
	<=19	20-24	25-29	30-34	35-39	40-44	45-49	50-54	55-59	60-64	65+	
Asia:												
India	3,175	738	1,820	2,374	2,985	2,473	1,901	1,387	1,092	666	616	19,227
Japan	253	207	518	717	582	634	527	568	708	1,500	4,145	10,359
China	576	349	877	983	933	929	1,142	779	419	199	142	7,328
South Korea	258	160	177	221	225	255	341	449	472	363	354	3,275
Pakistan	414	126	152	227	384	265	214	165	106	40	56	2,149
Israel	147	107	143	156	215	248	194	199	225	210	269	2,113
Sri Lanka	378	79	166	148	232	167	139	133	207	78	62	1,789
Bangladesh	280	58	81	164	163	165	161	52	26	16	8	1,174
Singapore	54	40	73	72	93	93	82	99	109	68	65	848
Malaysia	35	25	38	48	47	48	68	77	54	51	28	519
Philippines	56	7	18	74	44	51	50	37	40	22	27	426
Thailand	11	1	12	35	61	70	68	78	43	10	17	406
Turkey	34	6	21	41	54	59	33	47	23	18	7	343
Taiwan	13	-	8	16	22	29	19	32	35	56	84	314
Indonesia	10	2	14	22	15	15	10	15	10	21	16	150
Hong Kong	4	2	3	9	4	10	13	15	18	19	30	127
Other Asia	10	5	10	22	10	24	31	36	43	46	69	306
Total	5,708	1,912	4,131	5,329	6,069	5,535	4,993	4,168	3,630	3,383	5,995	50,853

Table 16 Cont'd: Total Departures by Nationality and Age Group - 2014

Nationality	AGE GROUP											Total
	<=19	20-24	25-29	30-34	35-39	40-44	45-49	50-54	55-59	60-64	65+	
Europe:												
United Kingdom	4,247	1,869	2,421	2,733	2,434	3,221	3,841	4,571	4,634	4,554	7,340	41,865
Germany	2,207	1,673	2,278	2,566	1,763	2,149	3,873	4,684	4,244	3,818	5,992	35,247
Netherlands	1,029	956	1,120	925	604	741	951	1,200	1,206	1,154	1,673	11,559
France	983	394	764	692	756	889	849	1,096	1,099	1,302	1,946	10,770
Switzerland	487	440	653	615	410	434	524	767	790	823	1,420	7,363
Italy	418	172	404	725	588	689	627	639	612	444	755	6,073
Belgium	463	286	458	423	384	408	559	596	606	472	614	5,269
Spain	307	157	328	612	536	506	572	657	471	339	359	4,844
Austria	192	160	166	214	121	238	329	423	448	375	654	3,320
Sweden	236	258	181	213	147	166	299	310	227	292	638	2,967
Ireland	168	107	260	317	208	206	159	350	256	247	263	2,541
Norway	456	462	209	99	89	90	124	213	183	152	324	2,401
Portugal	171	51	155	306	191	256	218	266	299	180	221	2,314
Denmark	174	198	146	101	88	109	141	197	218	246	543	2,161
Russia	152	85	190	250	230	292	258	248	170	87	88	2,050
Poland	88	64	91	184	200	235	174	215	224	165	130	1,770
Finland	57	120	80	77	70	72	70	114	101	94	134	989
Czech Republic	42	29	94	81	112	117	88	89	73	72	124	921
Serbia	70	24	15	47	49	47	114	65	55	10	14	510
Greenland	51	15	21	26	64	70	77	26	52	44	59	505
Slovakia	11	11	42	64	51	21	22	38	47	40	34	381
Bulgaria	30	8	44	40	58	35	39	13	35	23	13	338
Hungary	15	4	24	40	63	40	23	30	22	39	32	332
Romania	15	4	48	46	39	27	35	11	6	12	22	265
Luxembourg	25	34	53	63	26	34	31	89	36	25	21	437
Slovenia	7	8	13	11	14	16	10	18	16	17	21	151
Ukraine	2	6	22	19	16	23	24	22	11	1	2	148
Croatia	4	13	19	16	7	7	11	13	17	15	13	135
Other Europe	48	69	81	77	66	101	54	64	53	53	44	710
Total	12,155	7,677	10,380	11,582	9,384	11,239	14,096	17,024	16,211	15,095	23,493	148,336

Table 16 Cont'd: Total Departures by Nationality and Age Group - 2014

Nationality	AGE GROUP											Total
	<=19	20-24	25-29	30-34	35-39	40-44	45-49	50-54	55-59	60-64	65+	
America:												
United States	3,990	3,425	3,168	3,050	2,280	2,462	2,908	3,681	4,541	5,905	15,888	51,298
Canada	605	561	699	682	513	478	598	940	1,174	1,401	2,139	9,790
Brazil	124	53	107	221	131	107	86	126	84	72	78	1,189
Mexico	73	30	56	72	28	59	40	38	26	26	53	501
Argentina	34	17	41	39	39	56	23	34	44	43	66	436
Chile	10	14	48	31	14	6	12	13	13	12	15	188
Peru	10	4	18	21	15	47	20	16	14	4	8	177
Cuba	6	2	3	13	13	35	26	24	5	3	2	132
Jamaica	11	7	16	4	3	20	14	16	12	24	5	132
Trinidad and Tobago	-	2	14	15	6	44	1	5	9	8	13	117
other america	19	15	32	32	57	17	34	41	55	21	31	354
Total	4,882	4,130	4,202	4,180	3,099	3,331	3,762	4,934	5,977	7,519	18,298	64,314
Oceania:												
Australia	1,398	1,240	1,571	1,238	753	824	1,084	1,632	1,896	2,320	4,000	17,956
New Zealand	243	171	313	245	145	190	211	316	351	404	648	3,237
other oceania	1	2	2	3	3	2	2	-	2	-	5	22
Total	1,642	1,413	1,886	1,486	901	1,016	1,297	1,948	2,249	2,724	4,653	21,215
Not known	381	874	1,373	1,493	1,260	899	616	457	377	308	493	8,531
Total	168,185	150,464	260,321	337,055	306,503	264,765	193,958	156,094	121,195	84,397	104,515	2,147,452
% Distribution	7.8	7.0	12.1	15.7	14.3	12.3	9.0	7.3	5.6	3.9	4.9	100.0

Table 17: Total Departures by Country of Residence and Age Group - 2014

Country of Residence	Age Group											Total
	<=19	20-24	25-29	30-34	35-39	40-44	45-49	50-54	55-59	60-64	65+	
Africa:												
Botswana	17,656	11,405	20,250	29,730	27,017	21,424	16,500	13,000	9,282	5,337	6,229	177,830
Zimbabwe	51,408	58,849	105,822	137,151	117,593	95,591	53,983	32,053	22,559	12,672	9,234	696,915
South Africa	54,721	31,375	58,578	77,604	80,864	82,859	72,415	65,425	51,379	33,641	34,231	643,092
Zambia	6,457	15,295	28,095	39,597	35,386	24,229	13,376	7,968	4,357	2,055	1,390	178,205
Namibia	15,042	16,009	23,186	25,719	22,427	18,369	14,816	11,624	7,938	4,132	3,875	163,137
Lesotho	627	811	1,714	2,243	1,991	1,471	1,032	784	447	253	181	11,554
Malawi	659	656	1,146	1,980	1,963	1,664	969	670	486	198	178	10,569
Swaziland	506	677	1,463	1,462	1,280	837	632	406	249	110	123	7,745
Tanzania	269	284	682	830	1,179	771	416	351	222	145	61	5,210
Kenya	422	159	318	513	705	575	417	380	187	89	102	3,867
Mozambique	280	167	367	575	658	570	332	250	156	57	54	3,466
Angola	494	610	266	211	206	215	196	134	95	42	26	2,495
Cote D'ivoire	149	103	145	118	170	201	170	186	184	200	252	1,878
Uganda	85	63	130	229	218	133	121	85	62	42	22	1,190
Mauritius	155	51	78	108	113	140	92	114	119	79	70	1,119
Democratic Republic of Congo	189	32	47	92	149	84	73	65	47	30	15	823
Nigeria	183	33	42	63	88	80	89	93	81	12	10	774
Ghana	52	24	35	49	54	33	44	64	46	23	20	444
Ethiopia	100	9	24	33	51	55	48	41	32	7	13	413
Somalia	44	16	29	46	46	53	51	27	31	22	22	387
Egypt	117	36	37	17	23	23	17	19	12	15	8	324
Cameroon	29	16	21	47	29	36	21	27	13	5	5	249
Tunisia	59	10	20	25	20	14	20	23	13	15	3	222
Seychelles	31	16	22	34	15	18	24	18	25	3	5	211
Rwanda	52	15	18	14	23	15	12	5	4	2	2	162
Sudan	26	13	11	17	18	22	11	9	11	7	6	151
Algeria	73	1	7	6	11	9	9	6	11	5	3	141
Senegal	16	12	14	12	12	19	14	13	15	10	3	140
Burundi	19	14	9	7	14	29	14	9	2	6	-	123
Madagascar	33	3	8	12	13	14	19	7	7	2	1	119
Congo	32	3	3	10	7	13	8	9	10	7	2	104
Libya	35	6	6	11	10	6	14	5	8	1	2	104
Morocco	48	1	5	8	4	10	14	6	2	3	2	103
Other Africa	193	14	25	84	95	85	96	86	58	20	17	773
Total	150,261	136,788	242,623	318,657	292,452	249,667	176,065	133,962	98,150	59,247	56,167	1,914,039

Table 17 Cont'd: Total Departures by Country of Residence and Age Group - 2014

Country of Residence	Age Group											Total
	<=19	20-24	25-29	30-34	35-39	40-44	45-49	50-54	55-59	60-64	65+	
Asia:												
Japan	190	192	485	659	497	582	487	505	667	1,443	4,138	9,845
India	884	241	615	717	682	643	431	359	335	184	224	5,315
South Korea	152	119	156	150	163	184	245	352	409	339	326	2,595
China	168	111	253	252	205	191	224	156	135	90	74	1,859
Singapore	61	41	68	75	82	91	76	109	83	65	65	816
Pakistan	120	35	28	44	75	47	54	35	26	13	21	498
Malaysia	32	29	40	50	40	46	50	64	52	49	27	479
Hong Kong	26	11	23	29	23	35	43	56	66	51	73	436
Bangladesh	129	21	26	51	55	29	41	5	13	6	6	382
Sri Lanka	61	14	31	26	40	28	18	36	58	16	21	349
Yemen	9	23	70	79	53	35	28	14	5	5	-	321
United Arab Emirates	17	8	22	42	42	54	42	33	22	7	22	311
Turkey	28	7	15	25	36	37	29	28	25	18	9	257
Taiwan	9	-	6	15	8	7	18	28	30	46	64	231
Thailand	9	5	6	16	23	16	17	28	25	11	31	187
Philippines	21	2	7	26	16	12	20	7	12	10	17	150
Indonesia	7	1	11	13	9	9	9	12	8	19	15	113
Other Asia	27	22	41	48	58	44	36	39	26	6	15	362
Total	1,950	882	1,903	2,317	2,107	2,090	1,868	1,866	1,997	2,378	5,148	24,506

Table 17 Cont'd: Total Departures by Country of Residence and Age Group - 2014

Country of Residence	Age Group											Total
	<=19	20-24	25-29	30-34	35-39	40-44	45-49	50-54	55-59	60-64	65+	
Europe:												
Germany	1,863	1,573	2,151	2,311	1,550	1,885	3,405	4,356	3,966	3,656	5,643	32,359
United Kingdom	3,155	1,686	1,939	2,064	1,599	1,981	2,277	2,787	2,846	2,970	5,340	28,644
Netherlands	928	904	1,098	904	541	643	812	1,054	1,076	1,039	1,551	10,550
France	831	359	675	630	599	722	780	1,014	1,020	1,259	1,948	9,837
Switzerland	469	442	657	621	424	440	526	761	755	791	1,362	7,248
Italy	340	159	388	659	542	543	546	554	553	413	678	5,375
Spain	284	153	296	582	518	482	529	626	467	340	355	4,632
Belgium	424	256	430	386	299	357	459	508	503	437	584	4,643
Austria	155	144	158	179	107	182	274	398	398	334	550	2,879
Sweden	191	252	170	188	121	152	186	257	216	281	614	2,628
Norway	439	457	213	108	79	85	114	183	168	154	300	2,300
Denmark	158	200	145	101	73	78	125	160	193	239	531	2,003
Bosnia and Herzegovina	183	136	226	339	272	217	158	119	89	53	55	1,847
Russia	140	91	181	197	190	235	237	226	159	80	80	1,816
Poland	84	59	90	167	168	199	170	205	207	161	124	1,634
Ireland	121	102	212	222	144	118	108	136	133	135	171	1,602
Portugal	93	39	93	151	119	151	132	158	126	95	125	1,282
Finland	47	96	72	79	59	58	61	101	82	89	135	879
Czech Republic	41	28	88	79	114	103	91	90	71	68	125	898
Slovakia	7	17	37	56	45	20	22	37	46	44	41	372
Greenland	17	12	13	25	27	32	53	25	35	36	40	315
Hungary	15	3	20	30	49	36	20	29	15	33	29	279
Romania	8	5	43	38	37	29	29	9	5	11	21	235
Luxembourg	45	25	42	58	48	35	42	33	32	30	29	419
Bulgaria	18	8	32	22	16	18	15	5	16	12	10	172
Iceland	11	30	19	21	14	10	11	5	11	16	3	151
Slovenia	8	4	11	8	14	18	8	14	15	12	14	126
Serbia	14	8	10	18	17	8	14	12	9	6	7	123
Ukraine	4	6	18	16	6	14	23	15	8	1	4	115
Other Europe	52	60	89	101	78	77	68	85	76	42	59	787
Total	10,145	7,314	9,616	10,360	7,869	8,928	11,295	13,962	13,296	12,837	20,528	126,150

Table 17 Cont'd: Total Departures by Country of Residence and Age Group - 2014

Country of Residence	Age Group											Total
	<=19	20-24	25-29	30-34	35-39	40-44	45-49	50-54	55-59	60-64	65+	
America:												
United States	3,330	3,073	2,828	2,655	1,991	2,134	2,539	3,346	4,127	5,664	15,631	47,318
Canada	490	521	612	593	414	396	521	818	1,036	1,324	2,072	8,797
Brazil	97	53	104	180	113	89	87	118	79	70	80	1,070
Mexico	76	31	57	65	24	50	40	41	26	28	57	495
Argentina	24	14	31	30	27	37	21	33	34	37	42	330
Bolivia	34	20	27	40	50	40	22	15	18	6	10	282
Chile	9	14	48	25	13	4	12	14	12	13	18	182
Bahamas	15	11	11	22	16	22	11	8	13	3	7	139
Peru	8	4	15	16	12	16	14	10	10	4	7	116
Cuba	3	3	2	5	11	18	14	12	4	2	-	74
Trinidad and Tobago	-	1	9	8	7	21	2	3	5	8	5	69
Jamaica	8	4	13	4	3	6	6	5	3	3	9	64
Colombia	3	5	5	6	17	3	6	5	10	3	-	63
Other America	19	14	23	29	22	9	29	21	29	25	33	253
Total	4,116	3,768	3,785	3,678	2,720	2,845	3,324	4,449	5,406	7,190	17,971	59,252
Oceania:												
Australia	1,334	1,241	1,561	1,171	700	761	985	1,468	1,883	2,297	3,964	17,365
New Zealand	211	150	282	217	114	109	186	244	301	339	600	2,753
Other oceania	29	15	33	28	35	35	26	28	17	6	16	268
Total	1,574	1,406	1,876	1,416	849	905	1,197	1,740	2,201	2,642	4,580	20,386
Not Known	139	306	518	627	506	330	209	115	145	103	121	3,119
Total	168,185	150,464	260,321	337,055	306,503	264,765	193,958	156,094	121,195	84,397	104,515	2,147,452
% Distribution	7.8	7.0	12.1	15.7	14.3	12.3	9.0	7.3	5.6	3.9	4.9	100.0

Table 18: Total Departures by Border Post and Month - 2014

Border Post	MONTH												Total
	January	February	March	April	May	June	July	August	September	October	November	December	
Ramokgwebana	28,880	27,333	29,639	44,186	46,822	88,770	53,689	39,057	4,559	4,457	4,886	5,048	377,326
Tlokweng	39,390	40,470	45,367	51,602	57,273	40,146	40,871	38,077	4,577	4,074	4,771	6,926	373,544
Ramatlabama	32,100	32,443	35,902	35,494	38,911	29,048	26,461	22,985	3,301	2,599	3,311	4,459	267,014
Martins Drift	31802	21674	15286	24758	35973	28241	29838	22568	2742	2267	2917	3307	221,373
Pioneer Gate	17,229	15,909	20,005	26,516	26,292	17,651	18,102	16,686	1,896	2,278	2,314	2,640	167,518
Kazungula Ferry	14,094	13,308	14,245	18,319	19,275	13,589	33,708	17,498	2,485	1,683	1,391	1,534	151,129
Mamuno	10,012	8,304	9,398	19,095	14,394	10,908	10,527	10,168	731	1,916	1,337	1,524	98,314
Sir Seretse Khama Airport	7,967	9,623	11,291	15,433	15,290	10,956	10,165	9,795	1,070	1,571	1,241	1,621	96,023
Kazungula Road	8,208	6,985	7,799	16,068	13,425	9,188	12,843	11,819	1,166	1,473	1,024	1,108	91,106
Ramotswa	7,355	6,349	7,100	8,876	8,917	6,221	5,872	5,847	828	759	799	973	59,896
Ngoma Bridge	3,957	2,785	2,878	7,663	4,895	4,113	4,783	4,665	381	685	389	464	37,658
Sikwane	3,560	2,775	3,327	4,738	5,246	3,426	3,430	3,741	822	319	389	568	32,341
Matsiloje	2,209	1,858	2,120	3,199	4,326	6,342	4,146	2,855	385	333	366	253	28,392
Maun	2134	1578	1980	5034	5253	2566	1305	1683	264	539	331	327	22,994
Kasane	1,631	1,709	1,931	4,519	2,331	1,340	2,173	1,493	143	358	211	276	18,115
Mohembo	1,462	1,036	1,388	3,736	2,532	1,815	2,571	2,342	231	258	158	189	17,718
Parrs halt	3574	425	845	2146	877	707	1458	1712	1561	941	1217	2183	17,646
Maitengwe	1,266	1,093	1,125	1,908	2,361	3,693	2,348	1,642	236	240	207	178	16,297
Kasane Airport	797	605	824	1,381	1,766	855	1,060	1,516	181	163	116	149	9,413
Central Border	934	741	1,127	1,050	1,014	1,331	966	887	412	20	126	33	8,641
Tsabong	856	666	799	981	1451	713	837	700	132	52	150	151	7,488
Point Drift	3	7	14	495	285	185	621	1,285	797	930	607	622	5,851
Plaatjan	236	6	3	2	112	379	519	1,073	450	385	387	471	4,023
Bray	116	66	133	1	220	253	600	382	505	431	448	471	3,626
Francistown Airport	287	321	317	668	614	403	354	377	48	59	62	25	3,535
Middlepits	50	13	64	68	63	202	188	218	173	308	201	313	1,861
Bokspits	92	51	6	51	135	91	482	216	139	246	80	132	1,721
Two rivers	77	2	1	1	175	78	168	279	95	197	64	126	1,263
Dobe	71	44	49	140	98	100	136	154	162	74	103	74	1,205
Zanzibar	-	1	2	37	-	-	-	1	210	244	354	266	1,115
Limpopo Valley	43	2	20	0	24	69	53	247	313	87	34	31	923
Phitshane Molopo	9	313	232	29	-	-	-	-	-	-	-	-	583
Makopong	100	7	9	52	35	31	40	43	62	16	48	75	518
Karowe Airport	0	36	0	42	74	48	60	36	37	49	62	27	471
Francistown Airport	54	-	8	88	-	-	4	-	-	-	174	-	328
Selibe Phikwe Airport	20	13	44	1	18	13	31	50	10	1	11	-	212
Orapa	18	0	3	9	7	14	2	22	13	4	14	3	109
Jwaneng	13	0	1	10	0	0	29	33	0	3	8	0	97
Sowa Pan Airstrip	14	18	33	0	0	0	0	0	0	0	0	0	65
Total	220,620	198,569	215,315	298,396	310,484	283,485	270,440	222,152	31,117	30,019	30,308	36,547	2,147,452
% Distribution	10.3	9.2	10.0	13.9	14.5	13.2	12.6	10.3	1.4	1.4	1.4	1.7	100.0

Table 19: Total Departures by Month and Mode of Travel- 2014

Month	Road	Air	Total
January	209274	11,346	220,620
February	186,374	12,195	198,569
March	200,794	14,521	215,315
April	275,729	22,667	298,396
May	287,439	23,045	310,484
June	268,561	14,924	283,485
July	257,377	13,063	270,440
August	208,393	13,759	222,152
September	29,181	1,936	31,117
October	27,543	2,476	30,019
November	28,255	2,053	30,308
December	36,160	387	36,547
Total	2,015,080	132,372	2,147,452
% Distribution	93.8	6.2	100.0

