



## STATS BRIEF

RELEASED BY CENTRAL STATISTICS OFFICE

Private Bag 0024

Gaborone, Botswana

Tel: (+267) 3671300 Fax: (+267) 3952201

Website: [www.cso.gov.bw](http://www.cso.gov.bw)

Contact Statistician: Virginia Sebekedi



*All correspondence should be addressed to the Government Statistician*

---

No. 2010/9

May 2010

# ***MARRIAGE STATISTICS 2007***

## **1.0 INTRODUCTION**

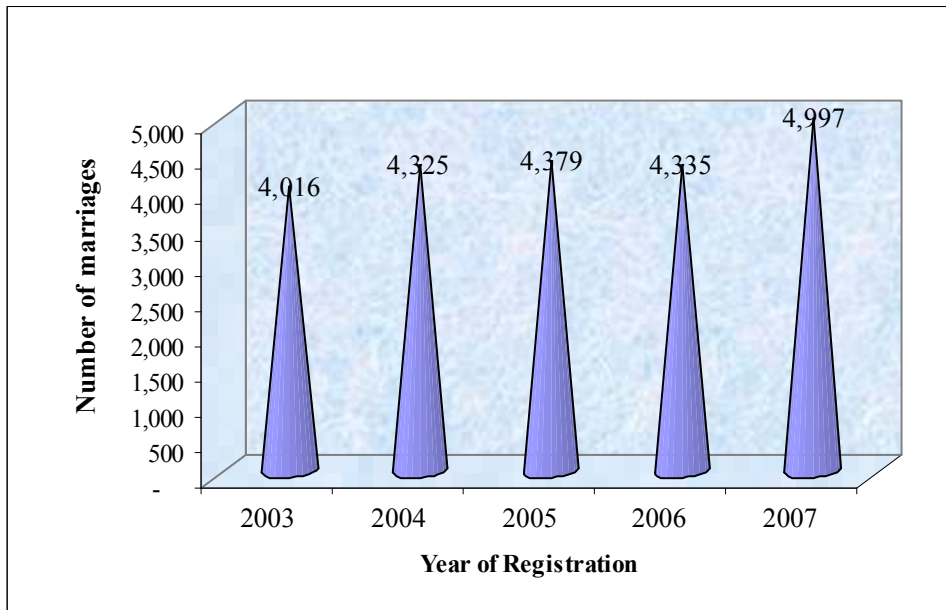
This Stats Brief is a summary of marriages that were registered in 2007. It is a section of the Population Report which is a series of annual publications produced by the Central Statistics Office relating to births, deaths and marriages.

Data for marriages is extracted manually from the marriage certificates filed in the Department of Civil and National Registration and processed by the Demography Unit. Due to the change in the way the information was captured, only statistics on marriages have been produced in the form of stats brief. The data for births and deaths could not be used because it is incomplete and therefore underestimates the births and deaths occurring in Botswana.

## 2.1 Trends in Marriages (2003-2007)

Chart 1 shows that the number of marriages registered between 2003 and 2007 fluctuated between 4,000 and 5000. The number showed a slight increase from 2003-2005. A slight decrease of about one percent is noticed, from 2005 to 2006. The highest number of marriages was registered in 2007 with an increase of fifteen percent from 2006.

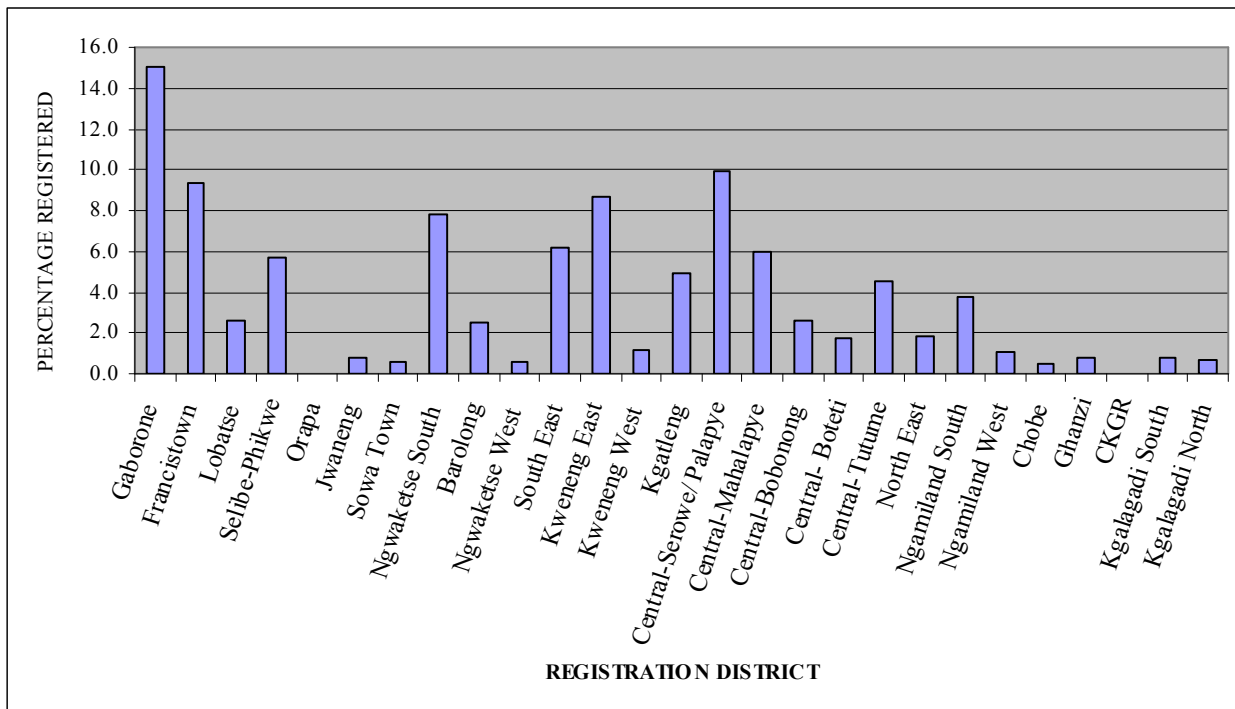
**Chart 1: TOTAL NUMBER OF MARRIAGES REGISTERED-2003-2007**



## 2.2 District of Registration

Chart 2 shows that a highest proportion of marriages were registered in Gaborone followed by Serowe/Palapye, Francistown, Kweneng East and Ngwaketse South. Gaborone accounts for about fifteen percent of total marriages registered in 2007.

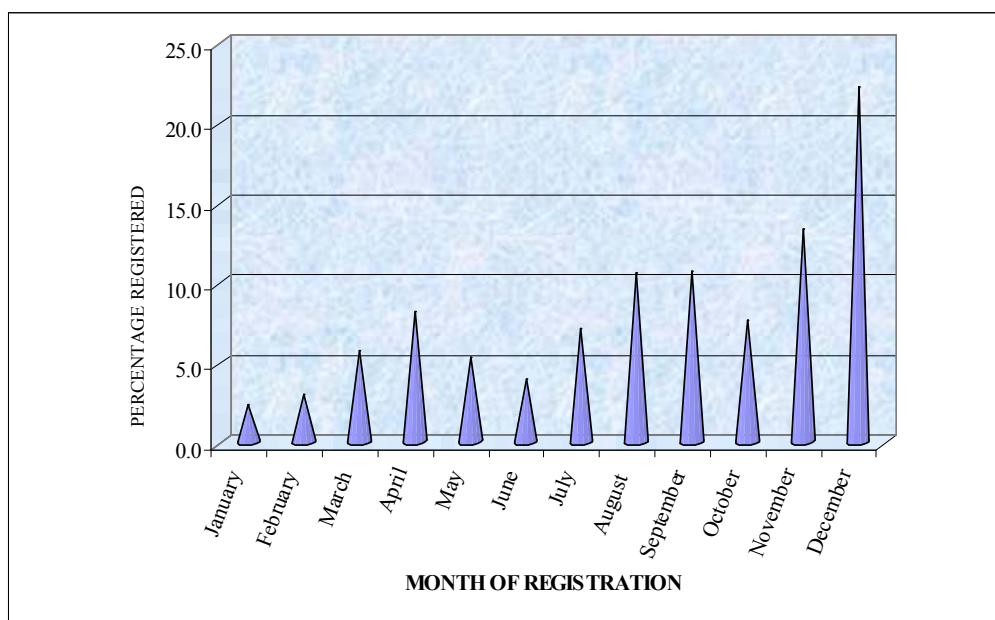
**Chart 2: PERCENTAGE DISTRIBUTION OF REGISTERED MARRIAGES BY DISTRICT OF REGISTRATION-2007**



**2.3 Month of Registration**

Chart 3 below shows percentage of marriages registered in 2007 by month of registration. The number of registered marriages was on the increase around the month of August, and slightly decreases in October and increase again in November. The highest percentage of registered marriages was in the month of December and lowest in the month of January.

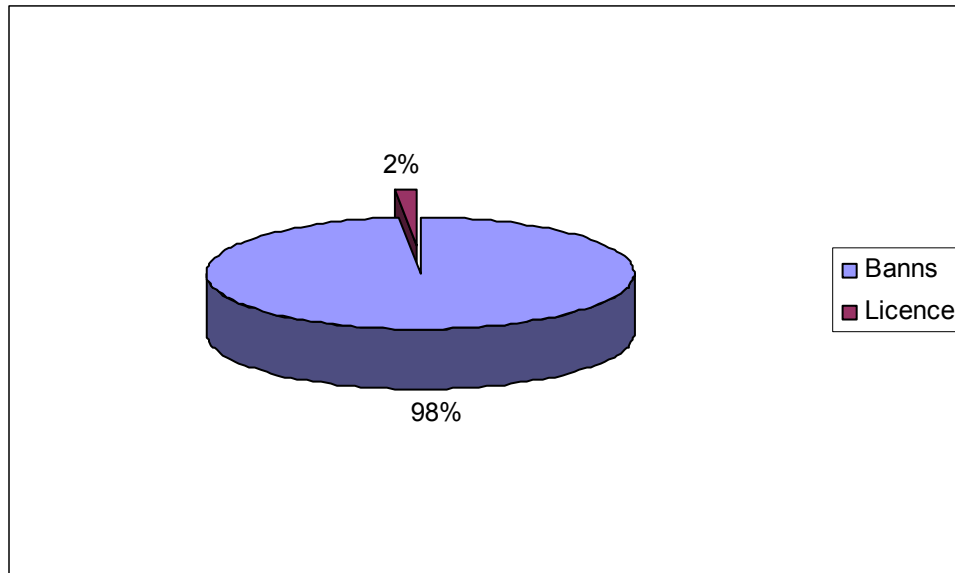
**Chart 3: REGISTERED MARRIAGES BY MONTH OF REGISTRATION-2007**



## 2.4 Type of Marriage

There are two types of marriages, the Court Banns marriage (the usual practice of proclaiming the names of the candidates for the period of 21 days before formalising the marriage) and the Special License that expedites the marriage process. The most popular type of marriage was the court banns which constituted about 98 percent of all the marriages registered. Special License marriage constituted the remaining 2 percent.

**Chart 4: PERCENTAGE DISTRIBUTION OF REGISTERED MARRIAGES BY TYPE OF MARRIAGE-2007**



## 2.5 Age At The Time Of Marriage

Table 2.51 below shows that the mean age at first marriage for bachelors was around 37 years for all the years (2003-2007), while the comparable figure for spinsters was around 32 years.

**Table 2.51: MEAN AGE AT FIRST MARRIAGE-2007**

| Year | Bachelor | Spinster |
|------|----------|----------|
| 2007 | 36.8     | 31.5     |
| 2006 | 36.9     | 31.4     |
| 2005 | 37.3     | 31.7     |
| 2004 | 37.3     | 31.8     |
| 2003 | 37.2     | 31.6     |

It is evident that there are marriages of minors as shown by Table 2.52, but this only happens for females, who marry between the ages of 18-20 (under 21), accounting for 1 percent. Men tend to marry at later ages with only 1.3 percent marrying at the ages between 20 and 24, while women at this age constitute 12 percent of the registered marriages in 2007. Generally women do not marry men in their same age group, but marries those who are in the next age group. Refer to Tables 1.2.

**TABLE 2.52: REGISTERED MARRIAGES AGE OF HUSBAND AND WIFE AT MARRIAGE TIME-2007**

| Age          | Male         |              | Female       |              |
|--------------|--------------|--------------|--------------|--------------|
|              | Total        | Percentage   | Total        | Percentage   |
| 18           | -            | -            | 3            | 0.1          |
| 19           | -            | -            | 15           | 0.3          |
| <b>18-19</b> | -            | -            | <b>18</b>    | <b>0.4</b>   |
| 20           | -            | -            | 30           | 0.6          |
| 21           | 2            | 0.0          | 56           | 1.1          |
| 22           | 8            | 0.2          | 111          | 2.2          |
| 23           | 15           | 0.3          | 171          | 3.4          |
| 24           | 39           | 0.8          | 232          | 4.6          |
| <b>20-24</b> | <b>64</b>    | <b>1.3</b>   | <b>600</b>   | <b>12.0</b>  |
| 25           | 67           | 1.3          | 280          | 5.6          |
| 26           | 98           | 2.0          | 325          | 6.5          |
| 27           | 126          | 2.5          | 404          | 8.1          |
| 28           | 186          | 3.7          | 331          | 6.6          |
| 29           | 225          | 4.5          | 347          | 6.9          |
| <b>25-29</b> | <b>702</b>   | <b>14.0</b>  | <b>1,687</b> | <b>33.8</b>  |
| 30-34        | 1,444        | 28.9         | 1,386        | 27.7         |
| 35-39        | 1,165        | 23.3         | 615          | 12.3         |
| 40-44        | 656          | 13.1         | 314          | 6.3          |
| 45-49        | 406          | 8.1          | 207          | 4.1          |
| 50-54        | 281          | 5.6          | 97           | 1.9          |
| 55-59        | 131          | 2.6          | 37           | 0.7          |
| 60-64        | 60           | 1.2          | 16           | 0.3          |
| 65+          | 88           | 1.8          | 20           | 0.4          |
| <b>Total</b> | <b>4,997</b> | <b>100.0</b> | <b>4,997</b> | <b>100.0</b> |

## 2.6 Registered Marriages and Occupation

Table 2.6 shows that the proportions of the males and females marrying differ across different occupations. In 2007, the highest proportion (around 17 percent) of males marrying falls within the category of professionals while the lowest proportion (around 2 percent) falls within the category of clerks. Marriage for females is at peak (around 39 percent) for those who are not employed and lowest (less than one percent) for those who fall within the category of plant and machine operators and assemblers.

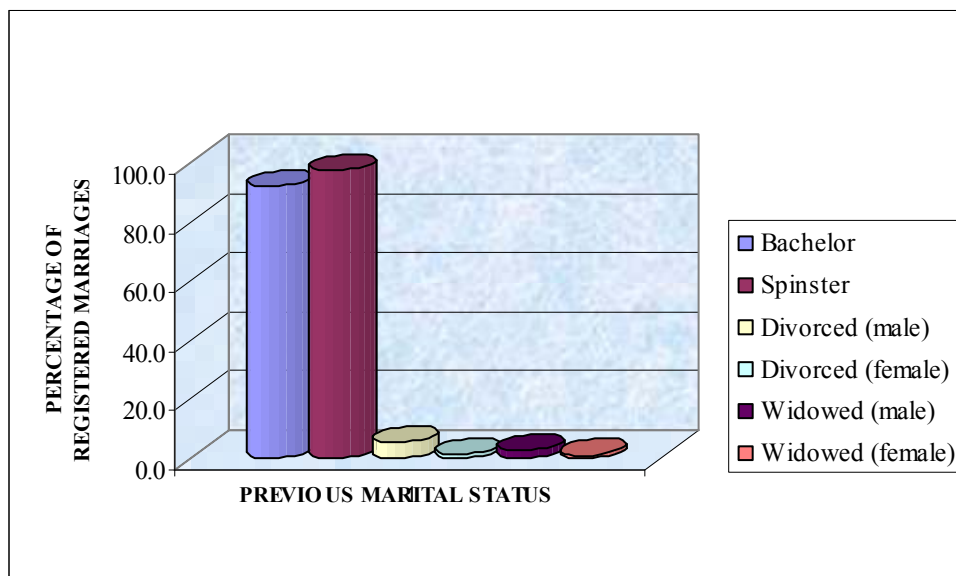
**Table 2.6: REGISTERED MARRIAGES BY OCCUPATION-2007**

| OCCUPATION                                    | Female       |            | Male         |            |
|---|--------------|------------|--------------|------------|
|   | Total        | Percent    | Total        | Percent    |
| Legislators, Administrators and Managers      | 400          | 8.0        | 579          | 11.6       |
| Professionals                                 | 669          | 13.4       | 840          | 16.8       |
| Technicians and Associate Professionals       | 667          | 13.3       | 768          | 15.4       |
| Clerks  | 426          | 8.5        | 95           | 1.9        |
| Service Workers and Shop Market Sales Workers | 431          | 8.6        | 472          | 9.4        |
| Skilled Agricultural and Related Workers      | 49           | 1.0        | 160          | 3.2        |
| Craft and Related Trade Workers               | 105          | 2.1        | 582          | 11.6       |
| Plant and Machine Operators and Assemblers    | 33           | 0.7        | 605          | 12.1       |
| Elementary Occupation                         | 213          | 4.3        | 225          | 4.5        |
| Botswana Defence Force                        | -            | -          | 254          | 5.1        |
| Not Classifiable                              | 55           | 1.1        | 133          | 2.7        |
| Unemployed                                    | 1,946        | 38.9       | 277          | 5.5        |
| Not Stated                                    | 3            | 0.1        | 7            | 0.1        |
| <b>Total</b>                                  | <b>4,997</b> | <b>100</b> | <b>4,997</b> | <b>100</b> |

**2.7 Previous Marital Status**

The chart below depicts that the marriages in which a man was a bachelor accounted for about 92 percent and for those in which he had previously been divorced formed about 5.5 percent of the total marriages. Widowers take the lowest proportions of marriages for both men and women. Marriages in which the woman was a spinster accounted for 97.5 percent of the marriages and those who had previously divorced formed about 1.6 percent of the total marriages.

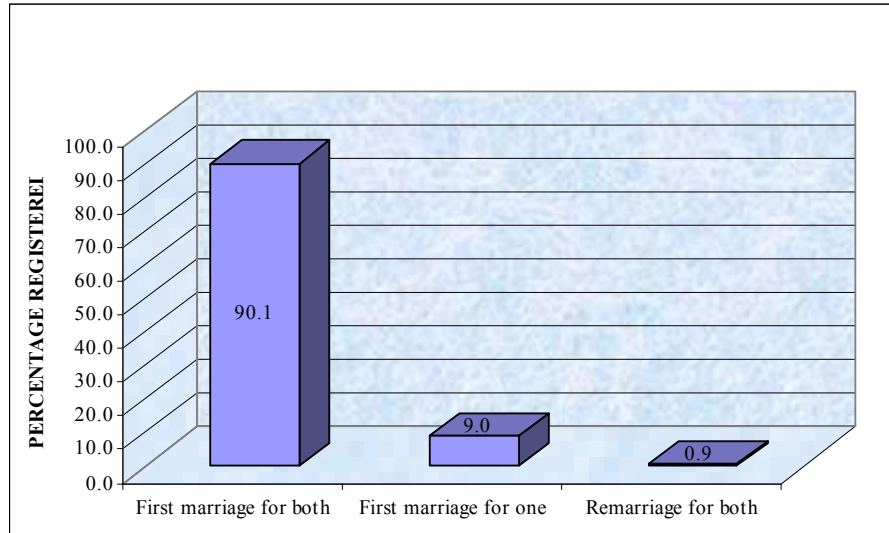
**Chart 5: MARRIAGES BY PREVIOUS MARITAL STATUS-2007**



## 2.8 Trends in First Marriages and Remarriages

Chart 6 below clearly shows that, marriages between spinsters and bachelors account for more than 90 percent of all the marriages registered in 2007. Around 9 percent of the marriages are accounted for by first marriages for one party and 1 percent of the marriages are for remarriage for both parties.

**Chart 6: TRENDS IN MARRIAGES AND RE-MARRIAGES-2007**



A.N. Majelantle

**Government Statistician**

**TABLE 1.0 A SUMMARY OF MARRIAGES 2003-2007**

| <b>Year of marriage</b>        | <b>2003</b>  | <b>2004</b>  | <b>2005</b>  | <b>2006</b>  | <b>2007</b>  |
|--------------------------------|--------------|--------------|--------------|--------------|--------------|
| <b>Total marriages</b>         | <b>4016</b>  | <b>4325</b>  | <b>4379</b>  | <b>4335</b>  | <b>4,997</b> |
| <b>Quarterly Totals</b>        |              |              |              |              |              |
| Jan-March                      | 548          | 500          | 568          | 496          | 547          |
| Apr-June                       | 787          | 752          | 776          | 745          | 869          |
| July-Sept                      | 1,092        | 1,209        | 1,238        | 1,135        | 1,420        |
| Oct-Dec                        | 1,589        | 1,864        | 1,797        | 1,959        | 2,161        |
| <b>Total</b>                   | <b>4,016</b> | <b>4,325</b> | <b>4,379</b> | <b>4,335</b> | <b>4,997</b> |
| <b>Previous marital status</b> |              |              |              |              |              |
| Males                          |              |              |              |              |              |
| Bachelor                       | 3,702        | 3,997        | 4,024        | 3,984        | 4,585        |
| Divorced                       | 217          | 239          | 244          | 249          | 274          |
| Widowed                        | 97           | 89           | 111          | 102          | 138          |
| <b>Total</b>                   | <b>4,016</b> | <b>4,325</b> | <b>4,379</b> | <b>4,335</b> | <b>4,997</b> |
| Females                        |              |              |              |              |              |
| Spinster                       | 3,919        | 4,213        | 4,272        | 4,208        | 4,871        |
| Divorced                       | 69           | 82           | 74           | 90           | 79           |
| Widowed                        | 28           | 30           | 33           | 37           | 47           |
| <b>Total</b>                   | <b>4,016</b> | <b>4,325</b> | <b>4,379</b> | <b>4,335</b> | <b>4,997</b> |
| First marriage for both        | 3,653        | 3,941        | 3,963        | 3,926        | 4,504        |
| First marriage for one         | 315          | 328          | 370          | 340          | 448          |
| Remarriage for both            | 48           | 56           | 46           | 69           | 45           |
| <b>Total</b>                   | <b>4,016</b> | <b>4,325</b> | <b>4,379</b> | <b>4,335</b> | <b>4,997</b> |
| <b>Type of marriage</b>        |              |              |              |              |              |
| After Banns                    | 3,874        | 4,173        | 4,234        | 4,205        | 4,915        |
| Special License                | 140          | 152          | 145          | 130          | 82           |
| Not stated                     | 2            | -            | -            | -            | -            |
| <b>Total</b>                   | <b>4,016</b> | <b>4,325</b> | <b>4,379</b> | <b>4,335</b> | <b>4,997</b> |



**Table 1.1 AGE AT MARRIAGE BY MARITAL STATUS AND SEX-2007**

| Age            | Males        |            |            |              |              | Females      |            |            |              |              |
|----------------|--------------|------------|------------|--------------|--------------|--------------|------------|------------|--------------|--------------|
|                | Bachelor     | Divorced   | Widowed    | Total        | Percent      | Spinster     | Divorced   | Widowed    | Total        | Percent      |
| 15-19          | -            | -          | -          | -            | -            | 18           | -          | -          | 18           | 0.4          |
| 20-24          | 64           | -          | -          | 64           | 1.3          | 600          | -          | -          | 600          | 12.0         |
| 25-29          | 699          | 3          | -          | 702          | 14.0         | 1,678        | 7          | 2          | 1,687        | 33.8         |
| 30-34          | 1,419        | 20         | 5          | 1,444        | 28.9         | 1,359        | 17         | 10         | 1,386        | 27.7         |
| 35-39          | 1,099        | 44         | 22         | 1,165        | 23.3         | 587          | 15         | 13         | 615          | 12.3         |
| 40-44          | 588          | 42         | 26         | 656          | 13.1         | 283          | 21         | 10         | 314          | 6.3          |
| 45-49          | 324          | 62         | 20         | 406          | 8.1          | 185          | 13         | 9          | 207          | 4.1          |
| 50-54          | 207          | 51         | 23         | 281          | 5.6          | 92           | 4          | 1          | 97           | 1.9          |
| 55-59          | 89           | 25         | 17         | 131          | 2.6          | 35           | 2          | -          | 37           | 0.7          |
| 60-64          | 36           | 16         | 8          | 60           | 1.2          | 14           | -          | 2          | 16           | 0.3          |
| 65+            | 60           | 11         | 17         | 88           | 1.8          | 20           | -          | -          | 20           | 0.4          |
| <b>Total</b>   | <b>4,585</b> | <b>274</b> | <b>138</b> | <b>4,997</b> | <b>100.0</b> | <b>4,871</b> | <b>79</b>  | <b>47</b>  | <b>4,997</b> | <b>100.0</b> |
| <b>Percent</b> | <b>91.8</b>  | <b>5.5</b> | <b>2.8</b> | <b>100.0</b> |              | <b>97.5</b>  | <b>1.6</b> | <b>0.9</b> | <b>100.0</b> |              |

**TABLE 1.2 AGE IN COMBINATION AT MARRIAGE – 2007**

|                |           | Age of Wife |              |              |            |            |            |           |           |           |           |              | Total |
|----------------|-----------|-------------|--------------|--------------|------------|------------|------------|-----------|-----------|-----------|-----------|--------------|-------|
|                |           | 15-19       | 20-24        | 25-29        | 30-34      | 35-39      | 40-44      | 45-49     | 50-54     | 55-59     | 60-64     | 65+          |       |
| Age of Husband | 20-24     | 3           | 38           | 20           | 3          | -          | -          | -         | -         | -         | -         | -            | 64    |
|                | 25-29     | 9           | 239          | 386          | 57         | 8          | 3          | -         | -         | -         | -         | -            | 702   |
|                | 30-34     | 4           | 208          | 704          | 457        | 56         | 10         | 4         | 1         | -         | -         | -            | 1,444 |
|                | 35-39     | -           | 78           | 393          | 487        | 174        | 29         | 3         | -         | -         | -         | 1            | 1,165 |
|                | 40-44     | 1           | 20           | 118          | 221        | 205        | 74         | 16        | 1         | -         | -         | -            | 656   |
|                | 45-49     | 1           | 13           | 43           | 98         | 99         | 93         | 52        | 7         | -         | -         | -            | 406   |
|                | 50-54     | -           | 3            | 17           | 42         | 54         | 66         | 72        | 21        | 4         | 2         | -            | 281   |
|                | 55-59     | -           | -            | 5            | 17         | 12         | 21         | 31        | 34        | 9         | 1         | 1            | 131   |
|                | 60-64     | -           | 1            | -            | 3          | 4          | 10         | 12        | 18        | 9         | 3         | -            | 60    |
|                | 65+       | -           | -            | 1            | 1          | 3          | 8          | 17        | 15        | 15        | 10        | 18           | 88    |
| Total          | <b>18</b> | <b>600</b>  | <b>1,687</b> | <b>1,386</b> | <b>615</b> | <b>314</b> | <b>207</b> | <b>97</b> | <b>37</b> | <b>16</b> | <b>20</b> | <b>4,997</b> |       |

**TABLE 1.3: REGISTERED MARRIAGES BY PLACE OF RESIDENCE OF HUSBAND AND WIFE AT MARRIAGE TIME-2007**

| District               | Age group |           |           |            |            |              |              |              |              |            |            |            |            |            |            |           |            |           |           |           |           |           | Total        |              |
|------------------------|-----------|-----------|-----------|------------|------------|--------------|--------------|--------------|--------------|------------|------------|------------|------------|------------|------------|-----------|------------|-----------|-----------|-----------|-----------|-----------|--------------|--------------|
|                        | 15-19     |           | 20-24     |            | 25-29      |              | 30-34        |              | 35-39        |            | 40-44      |            | 45-49      |            | 50-54      |           | 55-59      |           | 60-64     |           | 65+       |           |              |              |
|                        | M         | F         | M         | F          | M          | F            | M            | F            | M            | F          | M          | F          | M          | F          | M          | F         | M          | F         | M         | F         | M         | F         | M            | F            |
| Gaborone               | -         | 1         | 20        | 134        | 186        | 398          | 347          | 316          | 261          | 110        | 134        | 47         | 62         | 31         | 40         | 7         | 14         | 2         | 1         | 1         | 7         | -         | 1,072        | 1,047        |
| Francistown            | -         | 5         | 3         | 57         | 78         | 156          | 155          | 111          | 102          | 44         | 57         | 17         | 33         | 9          | 18         | 4         | 5          | -         | 6         | -         | 4         | 1         | 461          | 404          |
| Lobatse                | -         | -         | 2         | 7          | 17         | 32           | 34           | 36           | 29           | 8          | 13         | 4          | 9          | 7          | 3          | 4         | 5          | 1         | 2         | 2         | -         | -         | 114          | 101          |
| Selibe-Phikwe          | -         | -         | 3         | 28         | 40         | 88           | 93           | 61           | 53           | 34         | 36         | 15         | 26         | 5          | 19         | 6         | 5          | 1         | 1         | -         | 1         | -         | 277          | 238          |
| Orapa                  | -         | -         | -         | 8          | 18         | 24           | 32           | 18           | 30           | 6          | 8          | 2          | 4          | 3          | 2          | 1         | 1          | -         | -         | -         | -         | -         | 95           | 62           |
| Jwaneng                | -         | -         | -         | 10         | 10         | 13           | 28           | 21           | 24           | 13         | 11         | 3          | 10         | 2          | 7          | -         | 3          | -         | -         | -         | -         | -         | 93           | 62           |
| Sowa Town              | -         | -         | -         | 4          | 4          | 7            | 7            | 7            | 6            | 3          | 3          | 1          | 1          | -          | 1          | -         | 1          | -         | -         | -         | -         | -         | 23           | 22           |
| <b>Southern</b>        | -         | -         | <b>2</b>  | <b>40</b>  | <b>30</b>  | <b>110</b>   | <b>64</b>    | <b>108</b>   | <b>75</b>    | <b>65</b>  | <b>46</b>  | <b>30</b>  | <b>35</b>  | <b>30</b>  | <b>40</b>  | <b>19</b> | <b>16</b>  | <b>13</b> | <b>10</b> | <b>6</b>  | <b>25</b> | <b>4</b>  | <b>343</b>   | <b>425</b>   |
| Ngwaketse South        | -         | -         | 2         | 29         | 25         | 80           | 46           | 82           | 51           | 52         | 34         | 21         | 24         | 22         | 29         | 17        | 13         | 12        | 8         | 5         | 22        | 4         | 254          | 324          |
| Barolong               | -         | -         | -         | 11         | 5          | 26           | 14           | 17           | 20           | 12         | 8          | 4          | 9          | 5          | 8          | 2         | 2          | 1         | 1         | 1         | 2         | -         | 69           | 79           |
| Ngwaketse West         | -         | -         | -         | -          | -          | 4            | 4            | 9            | 4            | 1          | 4          | 5          | 2          | 3          | 3          | -         | 1          | -         | 1         | -         | 1         | -         | 20           | 22           |
| South East             | -         | 2         | 6         | 34         | 27         | 83           | 51           | 75           | 47           | 27         | 27         | 14         | 23         | 15         | 17         | 6         | 6          | -         | 3         | 2         | 2         | -         | 209          | 258          |
| <b>Kweneng</b>         | -         | <b>3</b>  | <b>13</b> | <b>75</b>  | <b>68</b>  | <b>224</b>   | <b>206</b>   | <b>175</b>   | <b>188</b>   | <b>74</b>  | <b>90</b>  | <b>53</b>  | <b>57</b>  | <b>35</b>  | <b>38</b>  | <b>15</b> | <b>18</b>  | <b>5</b>  | <b>9</b>  | <b>1</b>  | <b>12</b> | <b>4</b>  | <b>699</b>   | <b>664</b>   |
| Kweneng East           | -         | 3         | 11        | 67         | 51         | 189          | 166          | 162          | 149          | 68         | 78         | 49         | 52         | 29         | 35         | 15        | 18         | 4         | 6         | -         | 7         | 3         | 573          | 589          |
| Kweneng West           | -         | -         | 2         | 8          | 17         | 35           | 40           | 13           | 39           | 6          | 12         | 4          | 5          | 6          | 3          | -         | -          | 1         | 3         | 1         | 5         | 1         | 126          | 75           |
| Kgatleng               | -         | -         | 1         | 27         | 20         | 74           | 44           | 65           | 45           | 28         | 33         | 14         | 12         | 9          | 14         | 7         | 9          | 5         | -         | 1         | 3         | -         | 181          | 230          |
| <b>Central</b>         | -         | <b>4</b>  | <b>5</b>  | <b>101</b> | <b>100</b> | <b>304</b>   | <b>198</b>   | <b>230</b>   | <b>171</b>   | <b>123</b> | <b>100</b> | <b>67</b>  | <b>85</b>  | <b>37</b>  | <b>48</b>  | <b>18</b> | <b>31</b>  | <b>8</b>  | <b>14</b> | <b>1</b>  | <b>24</b> | <b>10</b> | <b>776</b>   | <b>903</b>   |
| Central-Serowe/Palapye | -         | 3         | 1         | 34         | 37         | 98           | 58           | 73           | 54           | 45         | 34         | 26         | 20         | 12         | 16         | 6         | 11         | 2         | 4         | -         | 6         | 2         | 241          | 301          |
| Central-Mahalapye      | -         | 1         | -         | 23         | 19         | 72           | 48           | 60           | 45           | 24         | 29         | 20         | 22         | 12         | 10         | 3         | 9          | 3         | 5         | 1         | 6         | 3         | 193          | 222          |
| Central-Bobonong       | -         | -         | 1         | 12         | 10         | 39           | 36           | 32           | 15           | 16         | 10         | 4          | 11         | 3          | 6          | 3         | 4          | 2         | 2         | -         | 2         | 1         | 97           | 112          |
| Central- Boteti        | -         | -         | -         | 13         | 10         | 31           | 20           | 12           | 23           | 11         | 7          | 6          | 10         | 2          | 3          | 1         | 2          | -         | 2         | -         | -         | -         | 77           | 76           |
| Central-Tutume         | -         | -         | 3         | 19         | 24         | 64           | 36           | 53           | 34           | 27         | 20         | 11         | 22         | 8          | 13         | 5         | 5          | 1         | 1         | -         | 10        | 4         | 168          | 192          |
| North East             | -         | -         | 1         | 14         | 12         | 30           | 28           | 32           | 25           | 12         | 11         | 13         | 6          | 4          | 9          | 3         | 1          | -         | 1         | -         | 1         | 1         | 95           | 109          |
| <b>North West</b>      | -         | <b>2</b>  | <b>2</b>  | <b>33</b>  | <b>43</b>  | <b>102</b>   | <b>90</b>    | <b>80</b>    | <b>57</b>    | <b>41</b>  | <b>52</b>  | <b>16</b>  | <b>23</b>  | <b>12</b>  | <b>9</b>   | <b>4</b>  | <b>4</b>   | <b>1</b>  | <b>4</b>  | <b>2</b>  | <b>7</b>  | <b>-</b>  | <b>291</b>   | <b>293</b>   |
| Ngamiland South        | -         | -         | 2         | 23         | 21         | 57           | 53           | 54           | 39           | 24         | 35         | 14         | 18         | 8          | 7          | 4         | 3          | 1         | 3         | 1         | 5         | -         | 186          | 186          |
| Ngamiland West         | -         | 1         | -         | 7          | 15         | 31           | 18           | 15           | 10           | 12         | 10         | 2          | 2          | 3          | 2          | -         | 1          | -         | 1         | -         | 1         | -         | 60           | 71           |
| Chobe                  | -         | 1         | -         | 3          | 7          | 14           | 19           | 11           | 8            | 5          | 7          | -          | 3          | 1          | -          | -         | -          | -         | -         | 1         | 1         | -         | 45           | 36           |
| Ghanzi                 | -         | -         | -         | 5          | 7          | 13           | 11           | 13           | 13           | 10         | 5          | 6          | 7          | 2          | 3          | 3         | 2          | -         | 2         | -         | -         | -         | 50           | 52           |
| Kgalagadi South        | -         | 1         | -         | 6          | 3          | 5            | 10           | 8            | 6            | 4          | 6          | 2          | 5          | 3          | 4          | -         | 1          | 1         | 2         | -         | -         | -         | 37           | 30           |
| Kgalagadi North        | -         | -         | 1         | 5          | 4          | 6            | 8            | 6            | 6            | 5          | 9          | 4          | 3          | 1          | 1          | -         | 2          | -         | 1         | -         | -         | -         | 35           | 27           |
| Outside Botswana       | -         | -         | 5         | 12         | 35         | 18           | 38           | 23           | 27           | 8          | 15         | 6          | 5          | 2          | 8          | -         | 7          | -         | 4         | -         | 2         | -         | 146          | 69           |
| Not stated             | -         | -         | -         | -          | -          | -            | -            | 1            | -            | -          | -          | -          | -          | -          | -          | -         | -          | -         | -         | -         | -         | -         | -            | 1            |
| <b>Total</b>           | -         | <b>18</b> | <b>64</b> | <b>600</b> | <b>702</b> | <b>1,687</b> | <b>1,444</b> | <b>1,386</b> | <b>1,165</b> | <b>615</b> | <b>656</b> | <b>314</b> | <b>406</b> | <b>207</b> | <b>281</b> | <b>97</b> | <b>131</b> | <b>37</b> | <b>60</b> | <b>16</b> | <b>88</b> | <b>20</b> | <b>4,997</b> | <b>4,997</b> |

**TABLE 1.4: MARRIAGES REGISTERED BY MALE AND FEMALE OCCUPATION-2007**

| Female occupation                                | Male occupation                                |               |   |           |   |   |  |  |                          |            |                     |            |               |              | Total |
|--|--|---------------|---|-----------|---|---|--|--|--------------------------|------------|---------------------|------------|---------------|--------------|-------|
|  | Legislators,<br>Administrators and<br>Managers | Professionals | Technicians and<br>Associate<br>Professionals | Clerks    | Service<br>Workers and Shop<br>Market<br>Sales<br>Workers | Skilled<br>Agricultural and<br>Related<br>Workers | Craft and<br>Related<br>Trade<br>Workers | Plant and<br>Machine<br>Operators<br>and<br>Assemblers | Elementary<br>Occupation | DF         | Not<br>Classifiable | Unemployed | Not<br>Stated |              |       |
| Legislators,<br>Administrators and<br>Managers   | 102  | 63            | 41  | 7         | 36  | 8   | 44                                       | 47   | 13                       | 19         | 10                  | 10         | -             | <b>400</b>   |       |
| Professionals                                    | 65   | 243           | 131   | 10        | 45  | 7   | 39                                       | 43   | 4                        | 50         | 16                  | 16         | -             | <b>669</b>   |       |
| Technicians and Associate<br>Professionals       | 80   | 150           | 190   | 9         | 65  | 9   | 50                                       | 37   | 12                       | 27         | 18                  | 20         | -             | <b>667</b>   |       |
| Clerks   | 50   | 78            | 87  | 15        | 41  | 3   | 38                                       | 53   | 9                        | 26         | 19                  | 6          | 1             | <b>426</b>   |       |
| Service Workers and Shop<br>Market Sales Workers | 43   | 50            | 48  | 11        | 70  | 10  | 44                                       | 70   | 23                       | 25         | 13                  | 24         | -             | <b>431</b>   |       |
| Skilled Agricultural and<br>Related Workers      | 2  | 4             | 3   | 1         | -   | 31  | 5  | -  | 1                        | -          | 1                   | 1          | -             | <b>49</b>    |       |
| Craft and Related Trade<br>Workers               | 5  | 16            | 13  | 4         | 11  | 3   | 24                                       | 11   | 6                        | 6          | 3                   | 3          | -             | <b>105</b>   |       |
| Plant and Machine<br>Operators and Assemblers    | 5  | 2             | 2   | -         | 4   | 1   | 4  | 8  | 1                        | 3          | -                   | 3          | -             | <b>33</b>    |       |
| Elementary Occupation                            | 16   | 13            | 13  | 6         | 32  | 8   | 48                                       | 25   | 21                       | 7          | 5                   | 19         | -             | <b>213</b>   |       |
| Not Classifiable                                 | 5  | 10            | 4   | -         | 5   | 2   | 1  | 5  | 4                        | 3          | 13                  | 2          | 1             | <b>55</b>    |       |
| Unemployed                                       | 205  | 211           | 236   | 32        | 163   | 77  | 285                                      | 306  | 131                      | 88         | 35                  | 173        | 4             | <b>1,946</b> |       |
| Not Stated                                       | 1  | -             | -   | -         | -   | 1   | -  | -  | -                        | -          | -                   | -          | 1             | <b>3</b>     |       |
| <b>Total</b>                                     | <b>579</b>                                     | <b>840</b>    | <b>768</b>                                    | <b>95</b> | <b>472</b>  | <b>160</b>  | <b>582</b>                               | <b>605</b>   | <b>225</b>               | <b>254</b> | <b>133</b>          | <b>277</b> | <b>7</b>      | <b>4,997</b> |       |

**TABLE 1.5: PREVIOUS MARITAL STATUS OF PERSONS REMARRYING, 2004-2007**

| Year of marriage  |              | Females      |              |              |              |           |              |             |              |
|---|--------------|--------------|--------------|--------------|--------------|-----------|--------------|-------------|--------------|
|   |              | Total        | Percent      | Spinster     | Percent      | Divorced  | Percent      | Widowed     | Percent      |
| <b>Males</b>  |              |              |              |              |              |           |              |             |              |
| <b>2004</b>   | Bachelor     | 3,997        | 92.4         | 3,941        | 93.5         | 40        | 48.8         | 16.0        | 53.3         |
|   | Divorced     | 239          | 5.5          | 199          | 4.7          | 35        | 42.7         | 5.0         | 16.7         |
|   | Widowed      | 89           | 2.1          | 73           | 1.7          | 7         | 8.5          | 9.0         | 30.0         |
|   | <b>Total</b> | <b>4,325</b> | <b>100.0</b> | <b>4,213</b> | <b>100.0</b> | <b>82</b> | <b>100.0</b> | <b>30.0</b> | <b>100.0</b> |
| <b>2005</b>   | Bachelor     | 4,024        | 91.9         | 3,962        | 92.8         | 36        | 48.6         | 25.0        | 75.8         |
|   | Divorced     | 244          | 5.6          | 213          | 5.0          | 28        | 37.8         | 3.0         | 9.1          |
|   | Widowed      | 111          | 2.5          | 96           | 2.2          | 10        | 13.5         | 5.0         | 15.2         |
|   | <b>Total</b> | <b>4,379</b> | <b>100.0</b> | <b>4,271</b> | <b>100.0</b> | <b>74</b> | <b>100.0</b> | <b>33</b>   | <b>100.0</b> |
| <i>* previous marital status of one woman not known</i> |              |              |              |              |              |           |              |             |              |
| <b>2006</b>   | Bachelor     | 3,984        | 91.9         | 3,926        | 93.3         | 38        | 42.2         | 20.0        | 54.1         |
|   | Divorced     | 249          | 5.7          | 199          | 4.7          | 42        | 46.7         | 8.0         | 21.6         |
|   | Widowed      | 102          | 2.4          | 83           | 2.0          | 10        | 11.1         | 9.0         | 24.3         |
|   | <b>Total</b> | <b>4,335</b> | <b>100.0</b> | <b>4,208</b> | <b>100.0</b> | <b>90</b> | <b>100.0</b> | <b>37.0</b> | <b>100.0</b> |
| <b>2007</b>   | Bachelor     | 4,585        | 91.8         | 4,504        | 92.5         | 46        | 58.2         | 35.0        | 74           |
|   | Divorced     | 274          | 5.5          | 238          | 4.9          | 27        | 34.2         | 9.0         | 19           |
|   | Widowed      | 138          | 2.8          | 129          | 2.6          | 6         | 7.6          | 3.0         | 6            |
|   | <b>Total</b> | <b>4,997</b> | <b>100</b>   | <b>4,871</b> | <b>100</b>   | <b>79</b> | <b>100</b>   | <b>47.0</b> | <b>100</b>   |