

GROSS DOMESTIC PRODUCT

Fourth Quarter Of 2019

Copyrights © Statistics Botswana 2020

Private Bag 0024
Gaborone.

TOLL FREE NUMBER: 0800600200

Tel: (+267) 367 1300

Fax: (+267) 395 2201

E-mail: info@statsbots.org.bw

Website: <http://www.statsbots.org.bw>



STATISTICS BOTSWANA

GROSS DOMESTIC PRODUCT

Fourth Quarter Of 2019

Table of Contents

| | | |
|-------|---|-----|
| 1. | Preface | 4. |
| 2. | Gross Domestic Product (GDP) | 5. |
| 2.1 | Revisions in this release | 5. |
| 2.2 | Fourth quarter GDP | 6. |
| 2.2.2 | Components of GDP by Type of Expenditure | 7. |
| 3. | Annual National Accounts | 8. |
| 3.1 | Annual Percentage changes | 8. |
| 3.2 | Gross Domestic Expenditure | 10. |
| | Figure 1: Real GDP growth rates | 7. |
| | Figure 2: Components of Gross Domestic Expenditure at 2006 prices | 8. |
| | Figure 3: Annual percentage change in real GDP | 9. |
| | Figure 4: Components of Gross Domestic Expenditure at constant 2006 price | 10. |

1. Preface

The statistical release contains the fourth quarter of 2019 Gross Domestic Product estimates by economic activity and components of final demand at current and constant prices.

Botswana's National Accounts are compiled according to the 1993 System of National Accounts (1993 SNA). The accounts presented in this publication adhere to the enhanced General Data Dissemination System (e-GDDS) of the International Monetary Fund (IMF), which sets out standards on coverage, periodicity and timeliness of data.

The estimates are provisional and subject to change. First estimates are normally based on limited data and hence cannot be precise and absolute. The figures are revised after receiving finalized or audited data from companies in which some differences and inconsistencies in the previously published data may be observed.

These estimates are not seasonally adjusted hence the variations may differ depending on the quarters.

The nominal Gross Domestic Product (GDP) for the fourth quarter of 2019 was P49, 488.9 million compared to a revised P49, 588.8 million registered during the previous quarter. This represents a quarterly decrease of 0.2 percent in nominal terms between the two periods. During the quarter under review, Trade, Hotels & Restaurants remained the major contributor to GDP by 20.0 percent, followed by General Government, Finance & Business services and Mining & Quarrying at 14.9, 14.8 and 13.9 percent respectively. The contribution of other sectors was below 7.5 percent with Water & Electricity being the lowest at 0.8 percent.

Real Gross Domestic Product for the fourth quarter of 2019 increased by 1.6 percent. The increase was attributed to the significant growth in real value added of Water & Electricity, Finance & Business Services and Transport & Communications industries by 22.3, 5.9 and 4.8 percent respectively.

Statistics Botswana acknowledges and appreciates the contribution of all stakeholders in the production of this report.

For more information and further enquiries, contact the Directorate of Stakeholder Relations at 3671300 or info@statsbots.org.bw. All Statistics Botswana outputs/publications are available on the website at www.statsbots.org.bw and at the Statistics Botswana Information Resource Center (Head-Office, Gaborone).



Dr. Burton S. Mguni
Statistician General
April 2020

2. Gross Domestic Product

2.1 Revisions in this release

Revisions have been made to the quarterly Gross Domestic Product (GDP) estimates published in December 2019. The changes were due to the updated source data and have affected Manufacturing, Water & Electricity, Trade, Hotels & Restaurants, and Finance & Business Services industries.

Table A1: Revisions In Real Percentage Changes for the Same Quarters of the Previous Year

| Industries | Publication December 2019 | | | | | | | Publication March 2020 | | | | | | | |
|-----------------------------|---------------------------|------------|------------|------------|------------|------------|------------|------------------------|------------|------------|------------|------------|------------|------------|------------|
| | 2018 Q1 | 2018 Q2 | 2018 Q3 | 2018 Q4 | 2019 Q1 | 2019 Q2 | 2019 Q3 | 2018 Q1 | 2018 Q2 | 2018 Q3 | 2018 Q4 | 2019 Q1 | 2019 Q2 | 2019 Q3 | 2019 Q4 |
| Manufacturing | 4.4 | 3.5 | 2.3 | 3.4 | 4.0 | 3.5 | 3.2 | 4.4 | 3.5 | 2.3 | 3.4 | 3.2 | 3.5 | 3.0 | 1.8 |
| Water & Electricity | 46.9 | -1.4 | 23.1 | -3.2 | 2.8 | -1.2 | -2.4 | 46.9 | -1.4 | 23.1 | -3.2 | 2.8 | -1.2 | 0.1 | 22.3 |
| Trade, Hotels & Restaurants | -1.8 | 9.5 | 7.3 | 0.1 | 5.8 | 5.7 | 5.5 | -1.8 | 9.5 | 7.3 | 0.1 | 5.6 | 5.1 | 4.9 | 1.1 |
| Finance & Business Services | 4.8 | 5.1 | 5.1 | 4.8 | 5.3 | 6.0 | 6.1 | 4.8 | 5.1 | 5.1 | 4.8 | 5.3 | 6.0 | 6.4 | 5.9 |
| Total GDP | 4.3 | 5.3 | 4.1 | 4.2 | 4.3 | 3.1 | 3.1 | 4.3 | 5.3 | 4.1 | 4.2 | 4.2 | 3.0 | 3.1 | 1.6 |

Table A2: Key Figures

| | Real Gross Domestic Product | | Total Final Consumption | | Gross Fixed Capital Formation | | |
|---------------------|-----------------------------|--------------|-------------------------|--------------|-------------------------------|--------------|-------|
| | Percentage Change | | | | | | |
| | Quarter-on-Quarter | Year-on-Year | Quarter-on-Quarter | Year-on-Year | Quarter-on-Quarter | Year-on-Year | |
| First quarter 2014 | | -2.5 | 3.3 | 2.9 | 2.4 | -0.7 | 9.3 |
| Second quarter 2014 | | 3.3 | 4.6 | -4.5 | 3.5 | -1.8 | -3.5 |
| Third quarter 2014 | | 1.3 | 6.0 | -0.5 | 6.1 | -6.2 | -5.7 |
| Fourth quarter 2014 | | 0.6 | 2.7 | 5.0 | 2.8 | 16.3 | 6.3 |
| First quarter 2015 | | -2.4 | 2.8 | 2.3 | 2.1 | -6.1 | 0.5 |
| Second quarter 2015 | | 0.2 | -0.3 | -3.1 | 3.6 | 7.8 | 10.4 |
| Third quarter 2015 | | -3.9 | -5.4 | 1.9 | 6.1 | 4.0 | 22.4 |
| Fourth quarter 2015 | | 2.6 | -3.6 | 1.6 | 2.6 | -2.0 | 3.2 |
| First quarter 2016 | | 3.5 | 2.2 | 2.3 | 2.6 | -5.8 | 3.5 |
| Second quarter 2016 | | 1.8 | 3.9 | -4.9 | 0.7 | 11.0 | 6.6 |
| Third quarter 2016 | | -1.1 | 6.9 | 3.8 | 2.6 | -1.4 | 1.1 |
| Fourth quarter 2016 | | 0.1 | 4.3 | 1.9 | 3.0 | 0.3 | 3.5 |
| First quarter 2017 | | 0.1 | 1.0 | 1.3 | 1.9 | -12.6 | -3.9 |
| Second quarter 2017 | | 1.8 | 0.9 | -0.7 | 6.4 | -4.2 | -17.1 |
| Third quarter 2017 | | 1.4 | 3.4 | 3.8 | 6.4 | 8.7 | -8.6 |
| Fourth quarter 2017 | | 3.0 | 6.4 | 1.1 | 5.6 | 4.2 | -5.1 |
| First quarter 2018 | | -1.8 | 4.3 | 1.2 | 5.5 | -1.2 | 7.2 |
| Second quarter 2018 | | 2.7 | 5.3 | -0.8 | 5.4 | 1.5 | 13.6 |
| Third quarter 2018 | | 0.2 | 4.1 | 1.6 | 3.1 | 1.9 | 6.5 |
| Fourth quarter 2018 | | 3.1 | 4.2 | 0.1 | 2.0 | 3.4 | 5.6 |
| First quarter 2019 | | -1.8 | 4.2 | 0.6 | 1.5 | -1.2 | 5.6 |
| Second quarter 2019 | | 1.5 | 3.0 | 2.1 | 4.5 | 4.2 | 8.3 |
| Third quarter 2019 | | 0.3 | 3.1 | 1.0 | 3.8 | 1.1 | 7.4 |
| Fourth quarter 2019 | | 1.7 | 1.6 | 0.1 | 3.8 | 0.5 | 4.5 |

2.2 Fourth quarter GDP

2.2.1 Production Account

The estimated GDP at current prices for the fourth quarter of 2019 was P49, 488.9 million compared to P49, 588.8 million registered in the second quarter of 2019 (See [table 1](#)).

Real GDP at constant 2006 prices for the fourth quarter of 2019 was P25, 288.1 million compared to P24, 870.1 million recorded in the third quarter of 2019 (See [table 3](#)).

The domestic economy increased by 1.6 percent in the fourth quarter of 2019 compared to a rise of 4.2 percent recorded in the same quarter of 2018. The growth was attributed to real value added of Water & Electricity, Finance & Business Services and Transport & Communications which increased by 22.3, 5.9 and 4.8 percent respectively. All other industries recorded positive growths of more than 1.1 percent except Agriculture and Mining which declined by 1.0 and 8.1 percent respectively (See [table 4](#)).

Water and Electricity value added at constant 2006 prices for the fourth quarter of 2019 was P319.9 million compared to P261.5 million registered in the same quarter of 2018, recording an increase of 22.3 percent. Even though the industry recorded the highest growth, its contribution to the GDP is still remains the lowest. In the fourth quarter of 2019, Electricity recorded a positive value added of P86.0 million compared to P30.1 million registered in the same quarter of 2018, leading to a significant growth of 185.1 percent. The increase in the Electricity real value added is attributed to a rise in the local electricity production which increased by 22.9 percent. Imports of Electricity went up by 4.1 percent during the quarter under review. The substantial increase in local Electricity production were largely due to reopening of Morupule A power station during the quarter under review.

Finance and Business Services industry exhibits a continuous increase overtime due to the rise in the value added of Finance, Real Estate, Business Services and Finance by 7.0, 6.9 and 6.1 percent respectively.

Transport and Communications value added increased by 4.8 percent in the fourth quarter of 2019 compared to 7.1 percent recorded in the same quarter of the previous year. The growth was mainly attributed to the increase in real value added of Post & Communications and Road transport by 6.6 and 5.4 percent respectively. The performance of the industry slowed down mainly due the rail transport problems encountered during the quarter and had negative impact on the goods traffic and passenger carried.

Manufacturing real value added rose by 1.8 percent in the fourth quarter of 2019 compared to an increase of 3.4 percent registered in the same quarter of the previous year. The slow growth is attributed to a decrease in real value added of Beverages and Meat & meat products sub industries by 3.2 and 2.1 percent respectively. The production of beverages decreased by 28.6 percent compared to a drop of 10.6 percent registered in the same quarter last year. The number of cattle slaughtered by Botswana Meat Commission decreased drastically by 65.4 percent during the quarter under review. The change in the Sales Agent led to a delay in farmers' payments and hence low number of cattle were brought to the abattoir.

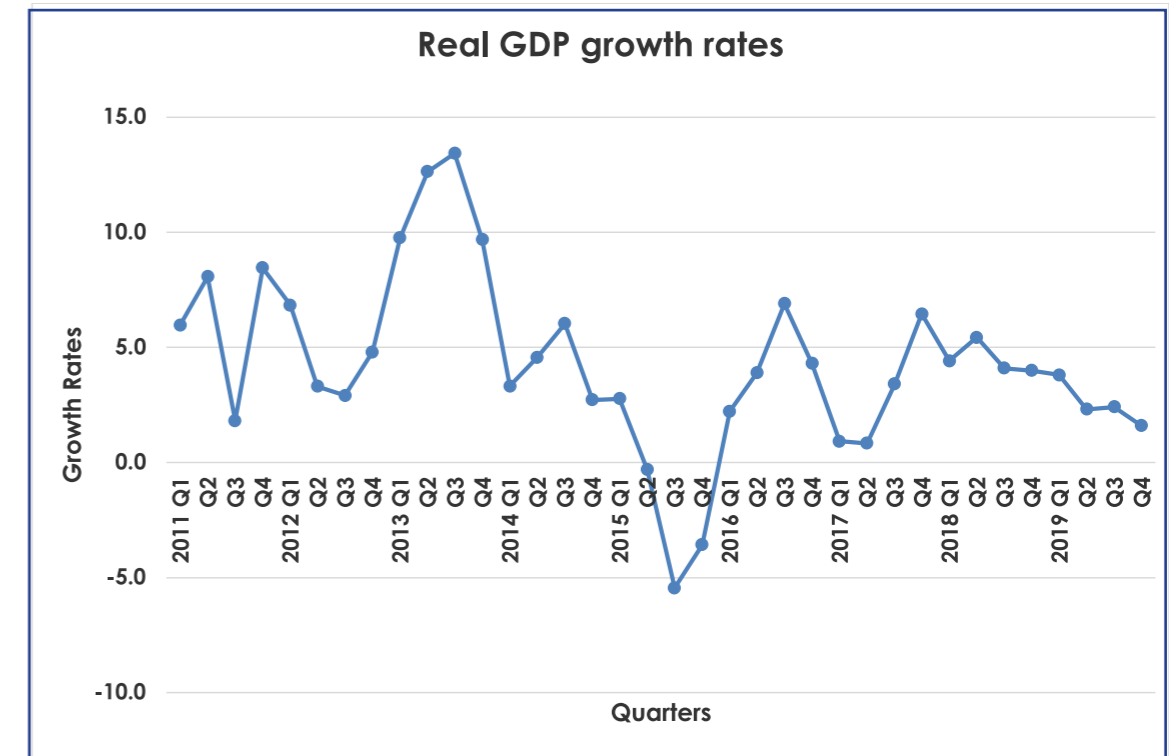
Trade, Hotels and Restaurants real value added went up by 1.1 percent in the fourth quarter of 2019 compared to an increase of 0.1 percent registered in the same quarter of the previous year. The insignificant growth is attributed to a decrease in real value added of Wholesalers and Petrol Stations sub industries by 14.9 and 2.2 percent respectively. The negative growth in the Wholesale value added is due to poor performance of downstream diamond industries during the quarter under review. Fuel consumption in kilo litres went down by 2.9 percent as compared to 2.7 percent increase recorded in the same quarter last year.

Year on year growth in the Agriculture industry was weak when compared to same quarter last year, with the industry registering a negative growth of 1.0 percent. The drop in the real value added of the Agriculture industry was mainly due to the decline in the Livestock sub industry by 0.4 percent.

A decrease in the real value added of Mining by 8.1 percent was mainly influenced by Diamond, Coal and Soda Ash value added. Diamond production in carats went down by 7.0 percent while Coal and Soda Ash production in tonnes decreased by 17.2 and 27.2 percent respectively in the fourth quarter of 2019. Diamonds are luxury goods and therefore are bound to fluctuate due to appetite of reliable customers as the world is highly affected by the outbreak of corona virus pandemic. Coal had a negative growth due to subdued uptake from Botswana Power Corporation (BPC). Equipment challenges at BPC power stations also had an influence.

Non-mining GDP increased by 2.8 percent in the fourth quarter of 2019 compared to 3.1 percent registered in the same quarter of the previous year.

Figure 1: Real GDP growth rates



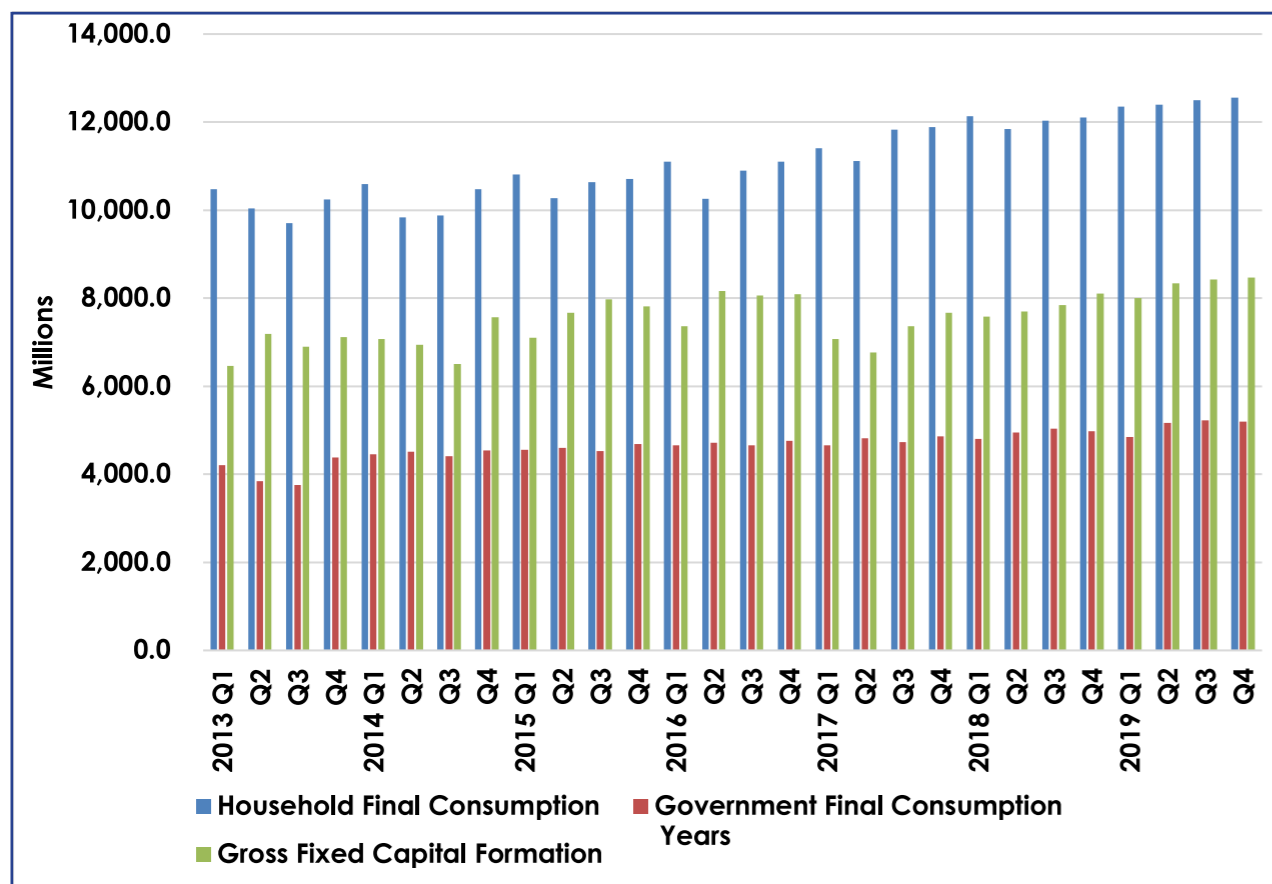
2.2.2 Components of GDP by Type of Expenditure

Total final consumption expenditure recorded an increase of 3.8 percent in the fourth quarter of 2019 compared to 2.0 percent recorded in the same quarter of the previous year. Government and Household final consumption grew by 4.3 and 3.6 percent respectively. Gross Fixed Capital Formation rose by 4.5 percent in the quarter under review.

In the case of foreign trade, real exports of goods and services decreased by 28.7 percent in the fourth quarter of 2019 compared to an increase of 16.2 percent realized in the same quarter of 2018. Diamond is a major export commodity. Year on year growth of diamond exports indicates a significant drop of 32.7 percent.

Real Imports of goods and services decreased by 1.2 percent during the quarter under review, compared to a 14.6 percent increase realized in the same quarter of the previous year.

Figure 2: Components of Gross Domestic Expenditure at 2006 prices



An increase of 5.9 percent in the real value added of the Finance and Business Services industry was mainly due to increase in Business Services, Real Estate and Finance by 6.7, 6.6 and 6.5 percent respectively.

Contribution to GDP by industry is shown in **table 2**. In 2019, Trade, Hotels & Restaurants and Mining industries remained major contributors to GDP, their contributions stood at 19.7 percent and 15.2 percent respectively (See **table 2**).

Table A4: Annual Percentage Change in Real GDP by Economic Activity

| | 2015 | 2016 | 2017 | 2018 | 2019 |
|------------------------------|-------------|------------|------------|------------|------------|
| Agriculture | 0.3 | 0.6 | 1.9 | 2.6 | -0.1 |
| Mining | -19.6 | -3.5 | -11.1 | 7.6 | -3.9 |
| Manufacturing | 3.2 | 1.6 | 2.2 | 3.4 | 2.8 |
| Water & Electricity | 7.0 | 95.2 | 39.9 | 11.3 | 6.3 |
| Construction | 4.0 | 4.2 | 3.5 | 3.7 | 3.0 |
| Trade, Hotels & Restaurants | -3.9 | 13.4 | 9.0 | 3.6 | 4.1 |
| Transport and Communication | 4.5 | 6.6 | 4.7 | 6.4 | 5.3 |
| Business Service | 4.5 | 3.3 | 4.1 | 5.0 | 5.9 |
| General Government | 3.3 | 2.4 | 1.5 | 3.4 | 3.7 |
| Social and personal Services | 3.6 | 3.5 | 2.8 | 3.6 | 3.0 |
| Total Value Added | -2.0 | 4.8 | 2.8 | 4.5 | 3.2 |
| Taxes Less Subsidies | 1.1 | 0.0 | 3.8 | 4.3 | 1.3 |
| Total GDP | -1.7 | 4.3 | 2.9 | 4.5 | 3.0 |

3. Annual National Accounts

3.1 Annual Percentage changes

Table A3: Key figures at constant 2006 prices

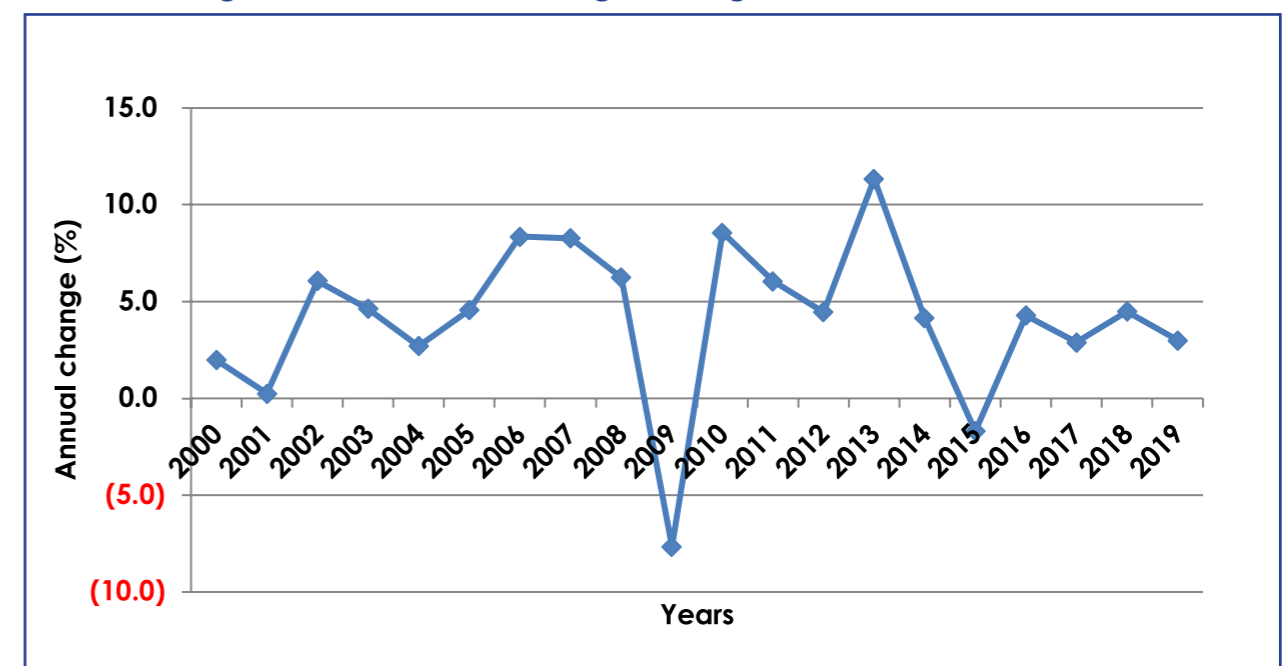
| | 2015 | 2016 | 2017 | 2018 | 2019 |
|-------------------------------|-------------|------------|------------|------------|------------|
| Total final consumption | 3.6 | 2.3 | 5.1 | 4.0 | 3.4 |
| Gross fixed capital formation | 8.8 | 3.6 | -8.8 | 8.1 | 6.4 |
| Exports | -18.3 | 13.1 | -16.2 | 7.2 | -16.6 |
| Imports | 2.8 | -5.4 | -21.1 | 11.8 | 6.7 |
| Gross domestic product | -1.7 | 4.3 | 2.9 | 4.5 | 3.0 |
| GDP per Capita | -3.3 | 2.7 | 1.3 | 2.9 | 1.4 |

GDP at current prices stood at P197, 268.7 million in 2019 compared to P190, 365.3 million in 2018, recording an increase of 3.6 percent.

Real GDP increased by 3.0 percent in 2019 compared to a 4.5 percent increase in 2018. The rise in real GDP was mainly attributed to Water & Electricity, Finance & Business Services and Transport & Communications industries which recorded an increase in value added of 6.3, 5.9 and 5.3 percent respectively. (See **table 4**).

Water and Electricity value added at constant 2006 prices for the year 2019 was P1, 031.7 million compared to P970.5 million registered in the previous year, recording an increase of 6.3 percent. In 2019, Electricity recorded a positive value added of P112.0 million compared to P57.5 million registered in the previous year.

Figure 3: Annual Percentage Change In Real GDP



3.2 Gross Domestic Expenditure

Real Gross Domestic Expenditure growth was 9.6 percent in 2019. Total final demand increased by 3.4 percent compared to 4.0 percent realised in 2018. Gross Fixed Capital Formation went up by 6.4 percent.

Table A5: Annual percentage change in Real Domestic Expenditure

| | 2017 | 2018 | 2019 |
|--|-------------|------------|------------|
| Total final consumption expenditure | 5.1 | 4 | 3.4 |
| Household final consumption expenditure | 6.6 | 4.1 | 3.5 |
| Final consumption of NPISH | 3.1 | 3.7 | 3.1 |
| Government final consumption expenditure | 1.5 | 3.7 | 3.2 |
| Gross Capital formation expenditure | -8.8 | 8.1 | 6.4 |
| Gross Domestic expenditure | -0.6 | 5.2 | 9.6 |

In case of foreign trade, Real exports of goods and services decreased by 16.6 percent in 2019 compared to an increase of 7.2 percent in 2018, while real imports of goods and services in 2019 rose by 6.7 percent as opposed to an increase of 11.8 percent in 2018.

Figure 4 : Components of Gross Domestic Expenditure at Constant 2006 Price

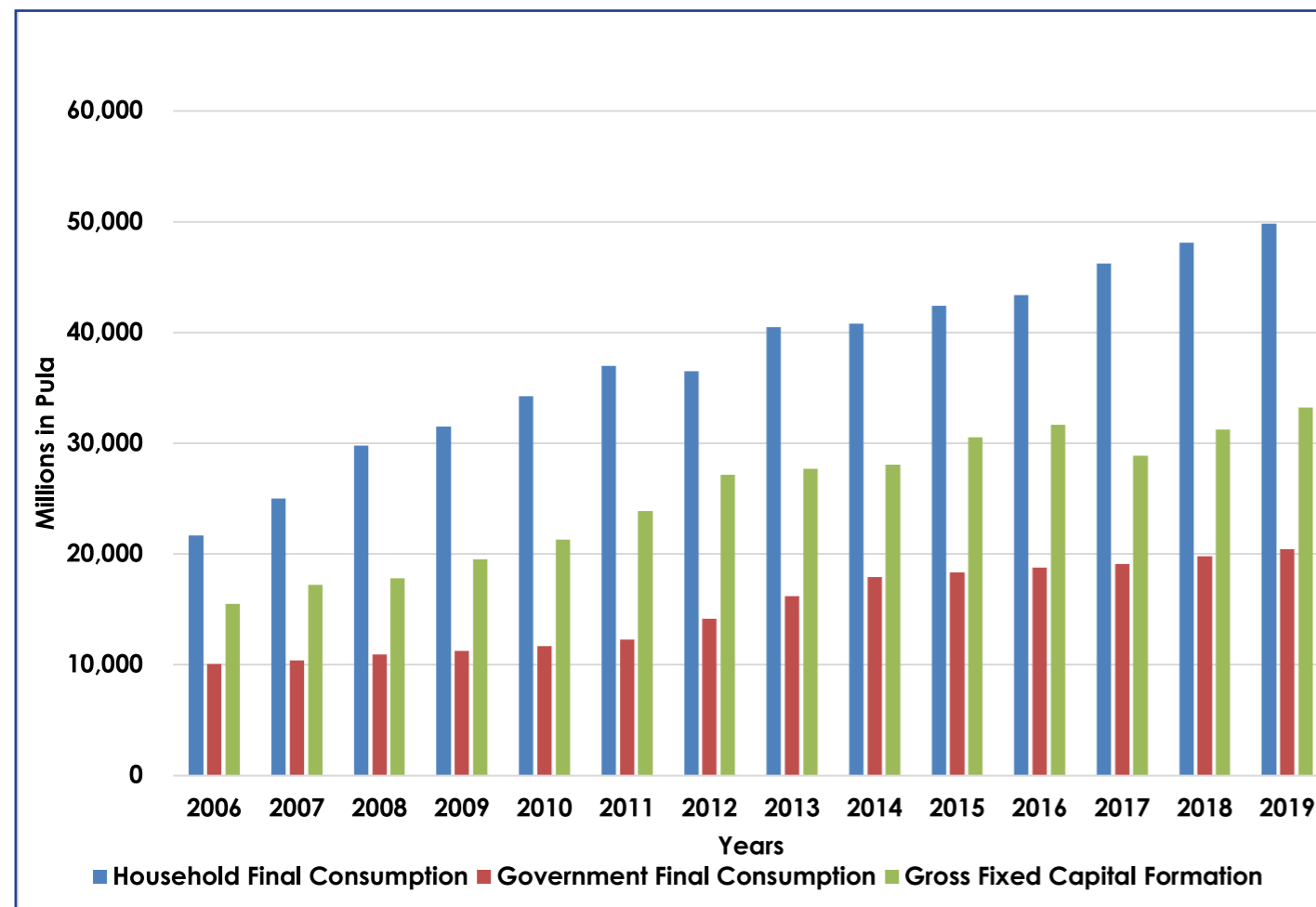


Table A6: GDP Per Capita (Pula)

| Year | Nominal GDP per capita | Real GDP per capita |
|------|------------------------|---------------------|
| 1994 | 7,869.20 | 22,793.40 |
| 1995 | 8,800.80 | 23,789.80 |
| 1996 | 10,550.80 | 24,562.50 |
| 1997 | 11,707.10 | 25,958.70 |
| 1998 | 12,615.70 | 25,437.90 |
| 1999 | 15,627.30 | 27,583.60 |
| 2000 | 17,991.20 | 27,814.80 |
| 2001 | 19,077.20 | 27,229.80 |
| 2002 | 20,097.50 | 28,349.60 |
| 2003 | 21,311.80 | 29,113.90 |
| 2004 | 23,650.10 | 29,350.00 |
| 2005 | 28,026.80 | 30,121.20 |
| 2006 | 32,038.30 | 32,038.30 |
| 2007 | 35,727.90 | 34,050.10 |
| 2008 | 39,021.10 | 35,509.20 |
| 2009 | 37,656.10 | 32,186.90 |
| 2010 | 43,705.90 | 34,298.60 |
| 2011 | 51,844.30 | 35,702.10 |
| 2012 | 53,116.00 | 36,507.00 |
| 2013 | 59,313.90 | 39,846.80 |
| 2014 | 67,867.9 | 40,743.3 |
| 2015 | 66,822.0 | 39,380.8 |
| 2016 | 76,840.9 | 40,450.2 |
| 2017 | 79,903.6 | 40,992.9 |
| 2018 | 83,176.2 | 42,178.1 |
| 2019 | 84,901.5 | 42,778.7 |

Table 1: Value Added by Kind of Economic Activity at Current Prices (P million)

| Calendar Year | Agriculture | Mining | Manufacturing | Water & Electricity | Construction | Trade, Hotels & Restaurants | Transport & Communication | Finance & Business Service | General Government | Social & Personal Services | Value Added | Taxes on Import | Other Taxes on products | Subsidies | Total GDP |
|----------------|-------------|----------|---------------|---------------------|--------------|-----------------------------|---------------------------|----------------------------|--------------------|----------------------------|-------------|-----------------|-------------------------|-----------|------------------|
| 2004 | 949.9 | 10,801.5 | 2,334.8 | 806.8 | 2,376.3 | 5,116.3 | 1,449.5 | 5,330.5 | 6,151.8 | 2,110.2 | 37,427.5 | 2,746.9 | 2,086.7 | -224.6 | 42,036.6 |
| 2005 | 927.9 | 16,105.1 | 2,512.0 | 714.9 | 2,417.8 | 5,498.9 | 1,825.1 | 5,918.6 | 7,195.5 | 2,544.4 | 45,660.2 | 3,174.9 | 2,172.2 | -255.1 | 50,752.2 |
| 2006 | 1,210.7 | 19,019.0 | 3,123.1 | 785.1 | 2,838.0 | 7,032.3 | 2,250.5 | 6,675.4 | 7,818.5 | 2,938.9 | 53,691.6 | 3,428.8 | 2,276.3 | -289.8 | 59,106.9 |
| 2007 | 1,504.7 | 19,567.7 | 4,206.6 | 751.5 | 3,544.1 | 8,243.6 | 2,697.3 | 7,653.0 | 8,887.4 | 3,255.8 | 60,311.7 | 4,290.5 | 2,879.7 | -329.2 | 67,152.7 |
| 2008 | 1,887.5 | 18,643.5 | 4,278.9 | 654.1 | 3,726.9 | 10,047.1 | 3,303.9 | 9,316.7 | 10,899.5 | 3,847.4 | 66,605.5 | 4,701.4 | 3,788.1 | -374.0 | 74,720.9 |
| 2009 | 2,071.0 | 11,209.6 | 4,662.3 | 317.2 | 4,495.0 | 11,162.8 | 3,993.0 | 9,694.7 | 12,316.3 | 4,593.3 | 64,515.2 | 4,535.3 | 4,836.6 | -424.9 | 73,462.3 |
| 2010 | 2,161.3 | 16,660.8 | 5,548.3 | 411.9 | 5,056.1 | 13,084.3 | 4,470.8 | 11,609.7 | 13,377.3 | 5,242.7 | 77,623.1 | 4,425.0 | 5,252.1 | -432.7 | 86,867.5 |
| 2011 | 2,636.0 | 24,529.1 | 6,074.2 | -58.8 | 6,247.3 | 15,595.3 | 5,113.9 | 13,978.7 | 14,777.6 | 5,881.2 | 94,774.4 | 5,055.4 | 5,598.3 | -448.3 | 104,979.8 |
| 2012 | 2,961.3 | 19,286.5 | 6,523.2 | -621.2 | 7,464.5 | 16,896.7 | 6,325.3 | 16,467.8 | 16,923.7 | 6,750.2 | 98,978.1 | 5,560.5 | 5,804.8 | -472.9 | 109,870.4 |
| 2013 | 2,876.9 | 24,243.4 | 7,285.1 | -123.2 | 7,997.9 | 21,211.3 | 6,906.2 | 17,717.0 | 17,731.0 | 7,344.1 | 113,189.7 | 6,403.1 | 6,083.2 | -517.7 | 125,158.3 |
| 2014 | 3,045.3 | 32,403.3 | 7,740.3 | -581.5 | 8,689.7 | 26,182.3 | 7,788.2 | 19,284.3 | 19,946.0 | 8,138.4 | 132,636.4 | 7,107.4 | 6,691.5 | -566.6 | 145,868.6 |
| 2015 | 3,215.0 | 25,962.2 | 8,441.7 | -219.2 | 9,606.6 | 23,711.4 | 8,559.3 | 21,517.5 | 22,491.1 | 8,653.0 | 131,938.6 | 7,541.6 | 7,205.1 | -619.0 | 146,066.3 |
| 2016 | 3,496.1 | 34,912.5 | 8,859.5 | 395.0 | 10,574.9 | 30,997.2 | 9,642.7 | 23,348.9 | 23,926.8 | 9,259.3 | 155,412.9 | 8,054.3 | 7,782.0 | -685.2 | 170,564.1 |
| 2017 | 3,583.8 | 31,261.8 | 9,214.5 | 1,770.1 | 11,487.6 | 35,059.4 | 10,622.7 | 25,049.5 | 25,839.7 | 9,899.4 | 163,788.4 | 8,656.3 | 8,378.5 | -720.4 | 180,102.8 |
| 2018 | 3,794.3 | 31,414.5 | 9,794.7 | 2,301.2 | 12,574.6 | 36,652.6 | 11,508.7 | 26,889.2 | 27,538.3 | 10,502.2 | 172,970.3 | 9,113.3 | 9,066.8 | -785.1 | 190,365.3 |
| 2019 | 3,845.4 | 30,080.5 | 10,352.5 | 1,976.6 | 13,422.7 | 38,765.9 | 12,129.7 | 28,613.2 | 29,019.9 | 11,046.3 | 179,252.7 | 9,323.6 | 9,567.0 | -874.6 | 197,268.7 |
| 2004 Q1 | 185.5 | 2,721.9 | 569.5 | 183.1 | 604.5 | 1,261.8 | 346.5 | 1,261.5 | 1,429.6 | 509.3 | 9,073.3 | 549.5 | 681.8 | -51.3 | 10,253.3 |
| Q2 | 317.6 | 1,348.6 | 582.2 | 194.3 | 586.3 | 1,294.1 | 337.0 | 1,253.5 | 1,522.9 | 513.2 | 7,949.9 | 768.1 | 412.6 | -57.4 | 9,073.2 |
| Q3 | 265.1 | 3,647.8 | 571.9 | 208.5 | 607.9 | 1,279.8 | 375.6 | 1,389.7 | 1,602.8 | 537.0 | 10,486.1 | 719.3 | 326.1 | -54.7 | 11,476.8 |
| Q4 | 181.6 | 3,083.2 | 611.2 | 220.9 | 577.5 | 1,280.5 | 390.5 | 1,425.8 | 1,596.4 | 550.7 | 9,918.3 | 710.0 | 666.3 | -61.1 | 11,233.4 |
| 2005 Q1 | 222.2 | 4,040.3 | 606.6 | 160.4 | 576.5 | 1,237.7 | 404.7 | 1,405.4 | 1,615.8 | 588.7 | 10,858.3 | 798.4 | 744.7 | -58.3 | 12,343.1 |
| Q2 | 254.2 | 2,939.0 | 620.9 | 174.0 | 595.1 | 1,323.6 | 416.5 | 1,427.3 | 1,693.5 | 610.0 | 10,054.2 | 718.5 | 419.1 | -65.2 | 11,126.7 |
| Q3 | 288.6 | 5,341.3 | 634.7 | 183.7 | 615.1 | 1,405.6 | 492.5 | 1,518.6 | 1,852.6 | 661.1 | 12,993.9 | 646.9 | 609.0 | -62.2 | 14,187.7 |
| Q4 | 162.9 | 3,784.5 | 649.8 | 196.7 | 631.0 | 1,532.0 | 511.4 | 1,567.3 | 2,033.6 | 684.7 | 11,753.8 | 1,011.1 | 399.3 | -69.5 | 13,094.7 |
| 2006 Q1 | 350.2 | 4,483.6 | 715.1 | 170.4 | 664.5 | 1,676.4 | 524.4 | 1,648.8 | 1,723.6 | 718.3 | 12,675.4 | 766.1 | 626.8 | -66.3 | 14,002.0 |
| Q2 | 258.4 | 3,463.4 | 722.3 | 177.9 | 685.7 | 1,700.0 | 550.0 | 1,649.0 | 2,001.7 | 725.2 | 11,933.6 | 848.6 | 501.7 | -74.0 | 13,209.9 |
| Q3 | 355.1 | 5,746.3 | 812.6 | 205.4 | 803.9 | 1,789.6 | 569.2 | 1,734.1 | 2,028.3 | 756.8 | 14,801.2 | 951.5 | 533.6 | -70.6 | 16,215.7 |
| Q4 | 247.0 | 5,325.6 | 873.1 | 231.4 | 683.9 | 1,866.3 | 606.9 | 1,643.5 | 2,064.9 | 738.7 | 14,281.4 | 862.6 | 614.2 | -78.9 | 15,679.3 |
| 2007 Q1 | 319.9 | 4,938.4 | 938.7 | 195.3 | 774.8 | 1,927.0 | 603.9 | 1,897.3 | 2,021.5 | 761.2 | 14,378.0 | 814.2 | 617.0 | -75.3 | 15,733.9 |
| Q2 | 478.6 | 3,760.5 | 1,092.6 | 193.6 | 859.3 | 2,037.4 | 669.8 | 1,907.7 | 2,251.5 | 789.7 | 14,040.8 | 1,145.0 | 672.7 | -84.1 | 15,774.4 |
| Q3 | 456.6 | 6,165.2 | 1,100.1 | 183.8 | 898.7 | 2,035.8 | 698.4 | 1,974.1 | 2,299.5 | 854.7 | 16,666.9 | 1,160.1 | 767.4 | -80.2 | 18,514.2 |
| Q4 | 249.6 | 4,703.6 | 1,075.2 | 178.8 | 1,011.3 | 2,243.4 | 725.1 | 1,873.9 | 2,314.7 | 850.2 | 15,225.9 | 1,171.3 | 822.6 | -89.6 | 17,130.1 |
| 2008 Q1 | 416.0 | 4,966.0 | 940.5 | 150.8 | 853.8 | 2,269.1 | 779.2 | 2,032.1 | 2,326.4 | 900.4 | 15,634.3 | 1,130.1 | 805.7 | -85.5 | 17,484.6 |
| Q2 | 452.7 | 3,584.5 | 1,123.3 | 159.0 | 918.1 | 2,452.9 | 806.5 | 2,171.4 | 2,782.2 | 906.0 | 15,356.7 | 1,171.4 | 854.4 | -95.5 | 17,286.9 |
| Q3 | 558.8 | 5,395.9 | 1,132.1 | 161.1 | 948.1 | 2,583.8 | 844.7 | 2,514.3 | 2,864.1 | 1,003.0 | 18,006.0 | 1,194.7 | 1,039.3 | -91.1 | 20,148.9 |
| Q4 | 460.0 | 4,697.1 | 1,083.0 | 183.2 | 1,006.8 | 2,741.2 | 873.5 | 2,598.9 | 2,926.9 | 1,037.9 | 17,608.6 | 1,205.1 | 1,088.6 | -101.8 | 19,800.4 |
| 2009 Q1 | 428.6 | 1,950.5 | 1,100.1 | 83.1 | 1,060.6 | 2,725.5 | 909.6 | 2,374.6 | 2,881.6 | 1,123.8 | 14,637.9 | 1,007.4 | 1,047.9 | -97.1 | 16,596.0 |
| Q2 | 535.8 | 3,272.8 | 1,202.2 | 79.2 | 1,137.9 | 2,882.6 | 950.4 | 2,365.8 | 3,093.0 | 1,122.8 | 16,642.5 | 1,089.0 | 1,108.7 | -108.5 | 18,731.5 |
| Q3 | 603.5 | 2,519.6 | 1,147.9 | 65.2 | 1,199.7 | 2,841.3 | 1,031.5 | 2,377.3 | 3,156.2 | 1,191.7 | 16,134.0 | 1,155.4 | 1,286.0 | -103.5 | 18,471.9 |
| Q4 | 503.1 | 3,466.7 | 1,212.1 | 89.6 | 1,096.9 | 2,713.4 | 1,101.5 | 2,577.1 | 3,185.5 | 1,154.9 | 17,101.0 | 1,283.6 | 1,394.1 | -115.7 | 19,663.0 |
| 2010 Q1 | 490.8 | 3,242.2 | 1,277.1 | 128.2 | 1,153.3 | 2,943.0 | 1,040.7 | 2,703.1 | 3,136.9 | 1,261.5 | 17,376.6 | 1,082.3 | 1,257.7 | -98.9 | 19,617.7 |
| Q2 | 595.0 | 3,759.1 | 1,357.3 | 101.1 | 1,150.6 | 3,267.1 | 1,080.3 | 2,881.7 | 3,179.0 | 1,302.7 | 18,673.9 | 1,049.8 | 1,301.7 | -110.5 | 20,914.9 |
| Q3 | 580.3 | 5,085.7 | 1,412.3 | 85.5 | 1,351.0 | 3,496.6 | 1,165.3 | 2,911.5 | 3,338.1 | 1,355.8 | 20,782.1 | 1,102.3 | 1,327.7 | -105.4 | 23,106.7 |
| Q4 | 495.2 | 4,573.8 | 1,501.6 | 97.1 | 1,401.3 | 3,377.5 | 1,184.5 | 3,113.3 | 3,723.4 | 1,322.8 | 20,790.5 | 1,190.5 | 1,364.9 | -117.8 | 23,228.1 |

Table 1 Continued: Value Added by Kind of Economic Activity at Current Prices (P million)

| Calendar Year | Agriculture | Mining | Manufacturing | Water & Electricity | Construction | Trade, Hotels & Restaurants | Transport & Communication | Finance & Business Service | General Government | Social & Personal Services | Value Added | Taxes on Import | Other Taxes on products | Subsidies | Total GDP |
|----------------|-------------|---------|---------------|---------------------|--------------|-----------------------------|---------------------------|----------------------------|--------------------|----------------------------|-------------|-----------------|-------------------------|-----------|-----------------|
| 2011 Q1 | 499.9 | 5,824.8 | 1,362.8 | -0.1 | 1,424.7 | 3,821.3 | 1,201.2 | 3,162.6 | 3,021.0 | 1,328.4 | 21,646.7 | 897.4 | 1,433.1 | -114.3 | 23,862.8 |
| Q2 | 667.8 | 6,113.8 | 1,426.5 | -11.2 | 1,472.6 | 3,716.6 | 1,235.1 | 3,352.9 | 3,725.1 | 1,441.8 | 23,141.1 | 1,412.1 | 1,473.4 | -102.2 | 25,924.5 |
| Q3 | 716.1 | 6,598.8 | 1,585.0 | -39.6 | 1,638.1 | 3,839.1 | 1,324.9 | 3,624.8 | 3,677.8 | 1,492.5 | 24,457.6 | 1,412.0 | 1,201.6 | -113.9 | 26,957.3 |
| Q4 | 752.2 | 5,991.6 | 1,699.8 | -7.9 | 1,711.8 | 4,218.3 | 1,352.7 | 3,838.5 | 4,353.7 | 1,618.4 | 25,529.1 | 1,333.9 | 1,490.2 | -117.9 | 28,235.3 |
| 2012 Q1 | 728.0 | 4,617.1 | 1,601.4 | -23.3 | 1,830.9 | 4,211.2 | 1,509.2 | 3,790.4 | 3,681.4 | 1,609.6 | 23,555.9 | 1,235.0 | 1,368.9 | -115.8 | 26,044.1 |
| Q2 | 796.0 | 5,524.0 | 1,627.7 | -265.7 | 1,859.2 | 4,173.6 | 1,564.6 | 4,072.5 | 4,145.2 | 1,687.8 | 25,184.9 | 1,267.2 | 1,390.5 | -116.6 | 27,726.0 |
| Q3 | 808.9 | 4,443.1 | 1,668.5 | -167.5 | 1,878.9 | 4,258.9 | 1,617.1 | 4,235.0 | 4,268.4 | 1,709.6 | 24,721.0 | 1,431.0 | 1,509.0 | -119.2 | 27,541.9 |
| Q4 | 628.4 | 4,702.3 | 1,625.6 | -164.7 | 1,895.5 | 4,253.0 | 1,634.4 | 4,369.9 | 4,828.7 | 1,743.1 | 25,516.2 | 1,627.2 | 1,536.4 | -121.4 | 28,558.5 |
| 2013 Q1 | 649.3 | 4,670.5 | 1,725.8 | -4.6 | 1,954.4 | 4,822.0 | 1,661.8 | 4,296.6 | 3,981.8 | 1,742.6 | 25,500.4 | 1,580.3 | 1,468.5 | -124.4 | 28,424.8 |
| Q2 | 780.6 | 7,933.6 | 1,784.4 | -126.1 | 1,988.8 | 5,006.7 | 1,677.4 | 4,377.4 | 4,346.5 | 1,833.7 | 29,603.0 | 1,511.0 | 1,472.5 | -125.6 | 32,461.0 |
| Q3 | 704.0 | 6,124.0 | 1,865.3 | 63.5 | 2,000.0 | 5,451.6 | 1,749.6 | 4,424.3 | 4,422.3 | 1,864.2 | 28,668.7 | 1,571.7 | 1,557.5 | -132.3 | 31,665.4 |
| Q4 | 743.0 | 5,515.3 | 1,909.6 | -56.0 | 2,054.7 | 5,931.0 | 1,817.4 | 4,618.7 | 4,980.4 | 1,903.6 | 29,417.6 | 1,740.1 | 1,584.8 | -135.4 | 32,607.2 |
| 2014 Q1 | 721.2 | 7,270.3 | 1,784.5 | -295.0 | 2,139.5 | 6,378.4 | 1,924.2 | 4,637.1 | 4,717.0 | 1,982.8 | 31,260.0 | 1,759.4 | 1,636.5 | -141.5 | 34,514.5 |
| Q2 | 774.2 | 9,402.0 | 1,898.4 | 110.9 | 2,205.0 | 6,553.9 | 1,922.3 | 4,734.7 | 4,875.5 | 2,020.5 | 34,497.3 | 1,714.3 | 1,654.3 | -140.0 | 37,725.9 |
| Q3 | 762.1 | 7,289.1 | 1,986.3 | -25.5 | 2,161.4 | 6,674.8 | 1,954.3 | 4,905.1 | 5,055.7 | 2,053.3 | 32,816.8 | 1,788.3 | 1,694.0 | -143.4 | 36,155.7 |
| Q4 | 787.8 | 8,441.8 | 2,071.1 | -371.9 | 2,183.8 | 6,575.3 | 1,987.3 | 5,007.4 | 5,297.8 | 2,081.9 | 34,062.3 | 1,845.4 | 1,706.6 | -141.8 | 37,472.5 |
| 2015 Q1 | 771.8 | 7,620.0 | 2,044.9 | -296.6 | 2,331.0 | 6,132.6 | 2,022.4 | 5,063.6 | 5,376.3 | 2,118.8 | 33,184.7 | 1,836.3 | 1,690.8 | | |

Table 2: Contribution of Gross Value Added to GDP by Kind of Economic Activity at Current Prices

| Calendar year | Agriculture | Mining | Manufacturing | Water & Electricity | Construction | Trade, Hotels & Restaurants | Transport & Communication | Finance & Business Service | General Government | Social & Personal Services | Value Added | Taxes on Import | Other Taxes on products | Subsidies | Total GDP |
|---------------|-------------|--------|---------------|---------------------|--------------|-----------------------------|---------------------------|----------------------------|--------------------|----------------------------|-------------|-----------------|-------------------------|-----------|-----------|
| 2004 | 2.3 | 25.7 | 5.6 | 1.9 | 5.7 | 12.2 | 3.4 | 12.7 | 14.6 | 5.0 | 89.0 | 6.5 | 5.0 | -0.5 | 100.0 |
| 2005 | 1.8 | 31.7 | 4.9 | 1.4 | 4.8 | 10.8 | 3.6 | 11.7 | 14.2 | 5.0 | 90.0 | 6.3 | 4.3 | -0.5 | 100.0 |
| 2006 | 2.0 | 32.2 | 5.3 | 1.3 | 4.8 | 11.9 | 3.8 | 11.3 | 13.2 | 5.0 | 90.8 | 5.8 | 3.9 | -0.5 | 100.0 |
| 2007 | 2.2 | 29.1 | 6.3 | 1.1 | 5.3 | 12.3 | 4.0 | 11.4 | 13.2 | 4.8 | 89.8 | 6.4 | 4.3 | -0.5 | 100.0 |
| 2008 | 2.5 | 25.0 | 5.7 | 0.9 | 5.0 | 13.4 | 4.4 | 12.5 | 14.6 | 5.1 | 89.1 | 6.3 | 5.1 | -0.5 | 100.0 |
| 2009 | 2.8 | 15.3 | 6.3 | 0.4 | 6.1 | 15.2 | 5.4 | 13.2 | 16.8 | 6.3 | 87.8 | 6.2 | 6.6 | -0.6 | 100.0 |
| 2010 | 2.5 | 19.2 | 6.4 | 0.5 | 5.8 | 15.1 | 5.1 | 13.4 | 15.4 | 6.0 | 89.4 | 5.1 | 6.0 | -0.5 | 100.0 |
| 2011 | 2.5 | 23.4 | 5.8 | -0.1 | 6.0 | 14.9 | 4.9 | 13.3 | 14.1 | 5.6 | 90.3 | 4.8 | 5.3 | -0.4 | 100.0 |
| 2012 | 2.7 | 17.6 | 5.9 | -0.6 | 6.8 | 15.4 | 5.8 | 15.0 | 15.4 | 6.1 | 90.1 | 5.1 | 5.3 | -0.4 | 100.0 |
| 2013 | 2.3 | 19.4 | 5.8 | -0.1 | 6.4 | 16.9 | 5.5 | 14.2 | 14.2 | 5.9 | 90.4 | 5.1 | 4.9 | -0.4 | 100.0 |
| 2014 | 2.1 | 22.2 | 5.3 | -0.4 | 6.0 | 17.9 | 5.3 | 13.2 | 13.7 | 5.6 | 90.9 | 4.9 | 4.6 | -0.4 | 100.0 |
| 2015 | 2.2 | 17.8 | 5.8 | -0.2 | 6.6 | 16.2 | 5.9 | 14.7 | 15.4 | 5.9 | 90.3 | 5.2 | 4.9 | -0.4 | 100.0 |
| 2016 | 2.0 | 20.5 | 5.2 | 0.2 | 6.2 | 18.2 | 5.7 | 13.7 | 14.0 | 5.4 | 91.1 | 4.7 | 4.6 | -0.4 | 100.0 |
| 2017 | 2.0 | 17.4 | 5.1 | 1.0 | 6.4 | 19.5 | 5.9 | 13.9 | 14.3 | 5.5 | 90.9 | 4.8 | 4.7 | -0.4 | 100.0 |
| 2018 | 2.0 | 16.5 | 5.1 | 1.2 | 6.6 | 19.3 | 6.0 | 14.1 | 14.5 | 5.5 | 90.9 | 4.8 | 4.8 | -0.4 | 100.0 |
| 2019 | 1.9 | 15.2 | 5.2 | 1.0 | 6.8 | 19.7 | 6.1 | 14.5 | 14.7 | 5.6 | 90.9 | 4.7 | 4.8 | -0.4 | 100.0 |
| 2004 Q1 | 1.8 | 26.5 | 5.6 | 1.8 | 5.9 | 12.3 | 3.4 | 12.3 | 13.9 | 5.0 | 88.5 | 5.4 | 6.6 | -0.5 | 100.0 |
| 2004 Q2 | 3.5 | 14.9 | 6.4 | 2.1 | 6.5 | 14.3 | 3.7 | 13.8 | 16.8 | 5.7 | 87.6 | 8.5 | 4.5 | -0.6 | 100.0 |
| 2004 Q3 | 2.3 | 31.8 | 5.0 | 1.8 | 5.3 | 11.2 | 3.3 | 12.1 | 14.0 | 4.7 | 91.4 | 6.3 | 2.8 | -0.5 | 100.0 |
| 2004 Q4 | 1.6 | 27.4 | 5.4 | 2.0 | 5.1 | 11.4 | 3.5 | 12.7 | 14.2 | 4.9 | 88.3 | 6.3 | 5.9 | -0.5 | 100.0 |
| 2005 Q1 | 1.8 | 32.7 | 4.9 | 1.3 | 4.7 | 10.0 | 3.3 | 11.4 | 13.1 | 4.8 | 88.0 | 6.5 | 6.0 | -0.5 | 100.0 |
| 2005 Q2 | 2.3 | 26.4 | 5.6 | 1.6 | 5.3 | 11.9 | 3.7 | 12.8 | 15.2 | 5.5 | 90.4 | 6.5 | 3.8 | -0.6 | 100.0 |
| 2005 Q3 | 2.0 | 37.6 | 4.5 | 1.3 | 4.3 | 9.9 | 3.5 | 10.7 | 13.1 | 4.7 | 91.6 | 4.6 | 4.3 | -0.4 | 100.0 |
| 2005 Q4 | 1.2 | 28.9 | 5.0 | 1.5 | 4.8 | 11.7 | 3.9 | 12.0 | 15.5 | 5.2 | 89.8 | 7.7 | 3.0 | -0.5 | 100.0 |
| 2006 Q1 | 2.5 | 32.0 | 5.1 | 1.2 | 4.7 | 12.0 | 3.7 | 11.8 | 12.3 | 5.1 | 90.5 | 5.5 | 4.5 | -0.5 | 100.0 |
| 2006 Q2 | 2.0 | 26.2 | 5.5 | 1.3 | 5.2 | 12.9 | 4.2 | 12.5 | 15.2 | 5.5 | 90.3 | 6.4 | 3.8 | -0.6 | 100.0 |
| 2006 Q3 | 2.2 | 35.4 | 5.0 | 1.3 | 5.0 | 11.0 | 3.5 | 10.7 | 12.5 | 4.7 | 91.3 | 5.9 | 3.3 | -0.4 | 100.0 |
| 2006 Q4 | 1.6 | 34.0 | 5.6 | 1.5 | 4.4 | 11.9 | 3.9 | 10.5 | 13.2 | 4.7 | 91.1 | 5.5 | 3.9 | -0.5 | 100.0 |
| 2007 Q1 | 2.0 | 31.4 | 6.0 | 1.2 | 4.9 | 12.2 | 3.8 | 12.1 | 12.8 | 4.8 | 91.4 | 5.2 | 3.9 | -0.5 | 100.0 |
| 2007 Q2 | 3.0 | 23.8 | 6.9 | 1.2 | 5.4 | 12.9 | 4.2 | 12.1 | 14.3 | 5.0 | 89.0 | 7.3 | 4.3 | -0.5 | 100.0 |
| 2007 Q3 | 2.5 | 33.3 | 5.9 | 1.0 | 4.9 | 11.0 | 3.8 | 10.7 | 12.4 | 4.6 | 90.0 | 6.3 | 4.1 | -0.4 | 100.0 |
| 2007 Q4 | 1.5 | 27.5 | 6.3 | 1.0 | 5.9 | 13.1 | 4.2 | 10.9 | 13.5 | 5.0 | 88.9 | 6.8 | 4.8 | -0.5 | 100.0 |
| 2008 Q1 | 2.4 | 28.4 | 5.4 | 0.9 | 4.9 | 13.0 | 4.5 | 11.6 | 13.3 | 5.1 | 89.4 | 6.5 | 4.6 | -0.5 | 100.0 |
| 2008 Q2 | 2.6 | 20.7 | 6.5 | 0.9 | 5.3 | 14.2 | 4.7 | 12.6 | 16.1 | 5.2 | 88.8 | 6.8 | 4.9 | -0.6 | 100.0 |
| 2008 Q3 | 2.8 | 26.8 | 5.6 | 0.8 | 4.7 | 12.8 | 4.2 | 12.5 | 14.2 | 5.0 | 89.4 | 5.9 | 5.2 | -0.5 | 100.0 |
| 2008 Q4 | 2.3 | 23.7 | 5.5 | 0.9 | 5.1 | 13.8 | 4.4 | 13.1 | 14.8 | 5.2 | 88.9 | 6.1 | 5.5 | -0.5 | 100.0 |
| 2009 Q1 | 2.6 | 11.8 | 6.6 | 0.5 | 6.4 | 16.4 | 5.5 | 14.3 | 17.4 | 6.8 | 88.2 | 6.1 | 6.3 | -0.6 | 100.0 |
| 2009 Q2 | 2.9 | 17.5 | 6.4 | 0.4 | 6.1 | 15.4 | 5.1 | 12.6 | 16.5 | 6.0 | 88.8 | 5.8 | 5.9 | -0.6 | 100.0 |
| 2009 Q3 | 3.3 | 13.6 | 6.2 | 0.4 | 6.5 | 15.4 | 5.6 | 12.9 | 17.1 | 6.5 | 87.3 | 6.3 | 7.0 | -0.6 | 100.0 |
| 2009 Q4 | 2.6 | 17.6 | 6.2 | 0.5 | 5.6 | 13.8 | 5.6 | 13.1 | 16.2 | 5.9 | 87.0 | 6.5 | 7.1 | -0.6 | 100.0 |
| 2010 Q1 | 2.5 | 16.5 | 6.5 | 0.7 | 5.9 | 15.0 | 5.3 | 13.8 | 16.0 | 6.4 | 88.6 | 5.5 | 6.4 | -0.5 | 100.0 |
| 2010 Q2 | 2.8 | 18.0 | 6.5 | 0.5 | 5.5 | 15.6 | 5.2 | 13.8 | 15.2 | 6.2 | 89.3 | 5.0 | 6.2 | -0.5 | 100.0 |
| 2010 Q3 | 2.5 | 22.0 | 6.1 | 0.4 | 5.8 | 15.1 | 5.0 | 12.6 | 14.4 | 5.9 | 89.9 | 4.8 | 5.7 | -0.5 | 100.0 |
| 2010 Q4 | 2.1 | 19.7 | 6.5 | 0.4 | 6.0 | 14.5 | 5.1 | 13.4 | 16.0 | 5.7 | 89.5 | 5.1 | 5.9 | -0.5 | 100.0 |

Table 2 Continued : Contribution of Gross Value Added to GDP by Kind of Economic Activity at Current Prices

| Calendar year | Agriculture | Mining | Manufacturing | Water & Electricity | Construction | Trade, Hotels & Restaurants | Transport & Communication | Finance & Business Service | General Government | Social & Personal Services | Value Added | Taxes on Import | Other Taxes on products | Subsidies | Total GDP |
|---------------|-------------|--------|---------------|---------------------|--------------|-----------------------------|---------------------------|----------------------------|--------------------|----------------------------|-------------|-----------------|-------------------------|-----------|-----------|
| 2011 Q1 | 2.1 | 24.4 | 5.7 | 0.0 | 6.0 | 16.0 | 5.0 | 13.3 | 12.7 | 5.6 | 90.7 | 3.8 | 6.0 | -0.5 | 100.0 |
| 2011 Q2 | 2.6 | 23.6 | 5.5 | 0.0 | 5.7 | 14.3 | 4.8 | 12.9 | 14.4 | 5.6 | 89.3 | 5.4 | 5.7 | -0.4 | 100.0 |
| 2011 Q3 | 2.7 | 24.5 | 5.9 | -0.1 | 6.1 | 14.2 | 4.9 | 13.4 | 13.6 | 5.5 | 90.7 | 5.2 | 4.5 | -0.4 | 100.0 |
| 2011 Q4 | 2.7 | 21.2 | 6.0 | 0.0 | 6.1 | 14.9 | 4.8 | 13.6 | 15.4 | 5.7 | 90.4 | 4.7 | 5.3 | -0.4 | 100.0 |
| 2012 Q1 | 2.8 | 17.7 | 6.1 | -0.1 | 7.0 | 16.2 | 5.8 | 14.6 | 14.1 | 6.2 | 90.4 | 4.7 | 5.3 | -0.4 | 100.0 |
| 2012 Q2 | 2.9 | 19.9 | 5.9 | -1.0 | 6.7 | 15.1 | 5.6 | 14.7 | 15.0 | 6.1 | 90.8 | 4.6 | 5.0 | -0.4 | 100.0 |
| 2012 Q3 | 2.9 | 16.1 | 6.1 | -0.6 | 6.8 | 15.5 | 5.9 | 15.4 | 15.5 | 6.2 | 89.8 | 5.2 | 5.5 | -0.4 | 100.0 |
| 2012 Q4 | 2.2 | 16.5 | 5.7 | -0.6 | 6.6 | 14.9 | 5.7 | 15.3 | 16.9 | 6.1 | 89.3 | 5.7 | 5.4 | -0.4 | 100.0 |
| 2013 Q1 | 2.3 | 16.4 | 6.1 | 0.0 | 6.9 | 17.0 | 5.8 | 15.1 | 14.0 | 6.1 | 89.7 | 5.6 | 5.2 | -0.4 | 100.0 |
| 2013 Q2 | 2.4 | 24.4 | 5.5 | -0.4 | 6.1 | 15.4 | 5.2 | 13.5 | 13.4 | 5.6 | 91.2 | 4.7 | 4.5 | -0.4 | 100.0 |
| 2013 Q3 | 2.2 | 19.3 | 5.9 | 0.2 | 6.3 | 17.2 | 5.5 | 14.0 | 14.0 | 5.9 | 90.5 | 5.0 | 4.9 | -0.4 | 100.0 |
| 2013 Q4 | 2.3 | 16.9 | 5.9 | -0.2 | 6.3 | 18.2 | 5.6 | 14.2 | 15.3 | 5.8 | 90.2 | 5.3 | 4.9 | -0.4 | 100.0 |
| 2014 Q1 | 2.1 | 21.1 | 5.2 | -0.9 | 6.2 | 18.5 | 5.6 | 13.4 | 13.7 | 5.7 | 90.6 | 5.1 | 4.7 | -0.4 | 100.0 |
| 2014 Q2 | 2.1 | 24.9 | 5.0 | 0.3 | 5.8 | 17.4 | 5.1 | 12.6 | 12.9 | 5.4 | 91.4 | 4.5 | 4.4 | -0.4 | 100.0 |
| 2014 Q3 | 2.1 | 20.2 | 5.5 | -0.1 | 6.0 | 18.5 | 5.4 | 13.6 | 14.0 | 5.7 | 90.8 | 4.9 | 4.7 | -0.4 | 100.0 |
| 2014 Q4 | 2.1 | 22.5 | 5.5 | -1.0 | 5.8 | 17.5 | 5.3 | 13.4 | 14.1 | 5.6 | 90.9 | 4.9 | 4.6 | -0.4 | 100.0 |
| 2015 Q1 | 2.1 | 20.8 | 5.6 | -0.8 | 6.4 | 16.8 | 5.5 | 13.8 | 14.7 | 5.8 | 90.8 | 5.0 | 4.6 | -0.4 | 100.0 |
| 2015 Q2 | 2.2 | 20.5 | 5.6 | 0.0 | 6.5 | 15.4 | 5.6 | 14.3 | 14.9 | 5.7 | 90.6 | 5.1 | 4.7 | -0.4 | 100.0 |
| 2015 Q3 | 2.1 | 18.6 | 5.7 | 0.0 | 6.4 | 15.5 | 5.9 | 14.7 | 15.5 | 5.8 | 90.3 | 5.2 | 5.0 | -0.4 | 100.0 |
| 2015 Q4 | 2.4 | 10.8 | 6.2 | 0.3 | 7.0 | 17.4 | 6.4 | 16.2 | 16.5 | 6.4 | 89.6 | 5.4 | 5.4 | -0.5 | 100.0 |
| 2016 Q1 | 2.1 | 19.1 | 5.4 | -0.2 | 6.4 | 17.5 | 5.7 | 14.1 | 14.9 | 5.7 | 90.6 | 5.1 | 4.7 | -0.4 | 100.0 |
| 2016 Q2 | 2.1 | 20.5 | 5.1 | 0.2 | 6.1 | 18.8 | 5.6 | 13.5 | 14.0 | 5.4 | 91.2 | 4.7 | 4.6 | -0.4 | 100.0 |
| 2016 Q3 | 2.0 | 22.0 | 5.1 | 0.0 | 6.1 | 18.2 | 5.6 | 13.4 | 13.7 | 5.3 | 91.4 | 4.5 | 4.5 | -0.4 | 100.0 |
| 2016 Q4 | 2.0 | 20.1 | 5.2 | 0.9 | 6.2 | 18.2 | 5.8 | 13.9 | 13.6 | 5.4 | 91.3 | 4.7 | 4.5 | -0.4 | 100.0 |
| 2017 Q1 | 2.0 | 17.8 | 4.9 | 0.4 | 6.3 | 20.5 | 5.9 | 14.0 | 14.0 | 5.5 | 91.2 | 4.8 | 4.4 | -0.4 | 100.0 |
| 2017 Q2 | 2.0 | 17.5 | 5.1 | 1.0 | 6.4 | 18.9 | 5.9 | 13.9 | 14.6 | 5.5 | 91.0 | 4.9 | 4.6 | -0.4 | 100.0 |
| 2017 Q3 | 2.0 | 18.8 | 5.2 | 1.2 | 6.4 | 17.8 | 5.9 | 13.7 | 14.4 | 5.4 | 90.7 | 4.8 | 4.9 | -0.4 | 100.0 |
| 2017 Q4 | 2.0 | 15.4 | 5.2 | 1.3 | 6.5 | 20.7 | 5.9 | 14.0 | 14.4 | 5.5 | 90.9 | 4.8 | 4.7 | -0.4 | 100.0 |
| 2018 Q1 | 2.0 | 16.0 | 5.0 | 1.3 | 6.5 | 19.0 | 6.1 | 14.4 | 14.6 | 5.6 | 90.6 | 5.0 | 4.7 | -0.4 | 100.0 |
| 2018 Q2 | 2.0 | 15.8 | 5.1 | 1.3 | 6.6 | 20.0 | 6.0 | 14.2 | 14.6 | 5.5 | 91.1 | 4.8 | 4.5 | -0.4 | 100.0 |
| 2018 Q3 | 2.0 | 18.3 | 5.2 | 1.2 | 6.6 | 18.3 | 6.0 | 13.8 | 14.2 | 5.4 | 90.9 | 4.6 | 4.9 | -0.4 | 100.0 |
| 2018 Q4 | 1.9 | 15.9 | 5.3 | 1.0 | 6.7 | 19.8 | 6.1 | 14.2 | 14.5 | 5.5 | 90.8 | 4.7 | 4.9 | -0.4 | 100.0 |
| 2019 Q1 | 1.9 | 16.7 | 5.0 | 1.2 | 6.6 | 19.0 | 6.1 | 14.2 | 14.5 | 5.5 | 90.8 | 4.9 | 4.8 | -0.4 | 100.0 |
| 2019 Q2 | 2.0 | 14.9 | 5.2 | 1.0 | 6.8 | 20.3 | 6.1 | 14.5 | 14.7 | 5.6 | 91.0 | 4.8 | 4.6 | -0.4 | 100.0 |
| 2019 Q3 | 2.0 | 15.4 | 5.4 | 1.0 | 6.9 | 19.3 | 6.2 | 14.5 | 14.7 | 5.6 | 90.9 | 4.6 | 5.0 | -0.4 | 100.0 |
| 2019 Q4 | 1.9 | 13.9 | 5.5 | 0.8 | 7.0 | 20.0 | 6.3 | 14.8 | 14.9 | 5.7 | 90.8 | 4.6 | 5.0 | -0.5 | 100.0 |

Table 3: Value Added by Kind of Economic Activity at Constant 2006 Prices (P million)

| Calendar year | Agriculture | Mining | Manufacturing | Water & Electricity | Construction | Trade, Hotels & Restaurants | Transport & Communication | Finance & Business Service | General Government | Social & Personal Services | Value Added | Taxes on Import | Other Taxes on products | Subsidies | Total GDP |
|---------------|-------------|----------|---------------|---------------------|--------------|-----------------------------|---------------------------|----------------------------|--------------------|----------------------------|-------------|-----------------|-------------------------|-----------|-----------------|
| 2004 | 1,095.8 | 16,705.0 | 2,555.2 | 886.8 | 2,478.5 | 5,321.5 | 1,735.0 | 6,273.1 | 8,081.8 | 2,176.8 | 47,309.3 | 2,882.1 | 2,212.5 | -236.1 | 52,167.7 |
| 2005 | 1,068.2 | 18,087.7 | 2,602.4 | 762.2 | 2,448.6 | 5,521.2 | 1,978.4 | 6,361.8 | 7,993.5 | 2,582.6 | 49,406.7 | 3,202.9 | 2,192.6 | -257.4 | 54,544.8 |
| 2006 | 1,210.7 | 19,019.0 | 3,123.1 | 785.1 | 2,838.0 | 7,032.3 | 2,250.5 | 6,675.4 | 7,818.5 | 2,938.9 | 53,691.6 | 3,428.8 | 2,276.3 | -289.8 | 59,106.9 |
| 2007 | 1,358.9 | 18,113.7 | 3,925.6 | 746.3 | 3,497.0 | 8,104.3 | 2,597.5 | 7,425.6 | 8,256.2 | 3,179.8 | 57,205.0 | 4,261.2 | 2,859.9 | -327.0 | 63,999.1 |
| 2008 | 1,385.7 | 18,160.9 | 3,824.9 | 795.5 | 3,524.3 | 9,560.9 | 2,862.0 | 8,293.4 | 8,276.6 | 3,663.9 | 60,348.0 | 4,434.1 | 3,566.5 | -352.6 | 67,996.1 |
| 2009 | 1,474.0 | 10,466.0 | 4,016.5 | 753.9 | 3,958.8 | 9,929.8 | 3,285.3 | 8,414.9 | 8,510.5 | 4,076.2 | 54,885.9 | 4,004.4 | 4,278.1 | -375.6 | 62,792.8 |
| 2010 | 1,559.7 | 12,596.2 | 4,173.5 | 844.2 | 4,101.3 | 10,852.0 | 3,496.8 | 9,379.2 | 9,150.6 | 4,329.7 | 60,483.3 | 3,679.4 | 4,367.1 | -359.8 | 68,170.1 |
| 2011 | 1,562.4 | 11,782.2 | 4,647.3 | 555.4 | 5,047.2 | 12,348.0 | 3,708.6 | 10,098.0 | 9,723.1 | 4,689.7 | 64,161.9 | 4,028.0 | 4,460.6 | -357.2 | 72,293.3 |
| 2012 | 1,429.1 | 11,101.2 | 4,819.5 | 402.9 | 5,774.8 | 13,188.0 | 4,111.9 | 11,018.1 | 9,993.4 | 5,191.9 | 67,030.9 | 4,331.0 | 4,521.3 | -368.4 | 75,514.8 |
| 2013 | 1,448.1 | 13,784.3 | 5,134.4 | 674.9 | 6,010.9 | 15,298.3 | 4,422.6 | 11,973.5 | 10,592.0 | 5,607.6 | 74,946.6 | 4,886.7 | 4,642.6 | -395.1 | 84,080.7 |
| 2014 | 1,443.1 | 13,851.1 | 5,160.3 | 298.5 | 6,234.7 | 16,933.1 | 4,854.6 | 12,291.2 | 11,079.4 | 5,843.3 | 77,989.3 | 5,145.8 | 4,844.7 | -410.3 | 87,569.5 |
| 2015 | 1,447.7 | 11,132.2 | 5,327.4 | 319.4 | 6,481.6 | 16,267.6 | 5,075.5 | 12,843.7 | 11,442.4 | 6,055.2 | 76,392.7 | 5,174.3 | 4,940.2 | -424.6 | 86,082.6 |
| 2016 | 1,456.2 | 10,737.7 | 5,410.1 | 623.5 | 6,755.3 | 18,453.3 | 5,408.1 | 13,268.8 | 11,714.0 | 6,266.6 | 80,093.6 | 5,153.7 | 4,978.5 | -438.3 | 89,787.4 |
| 2017 | 1,484.4 | 9,545.1 | 5,528.3 | 872.0 | 6,993.0 | 20,106.0 | 5,661.0 | 13,806.3 | 11,895.1 | 6,441.1 | 82,332.4 | 5,339.7 | 5,167.1 | -444.4 | 92,394.8 |
| 2018 | 1,523.5 | 10,267.1 | 5,715.5 | 970.5 | 7,251.5 | 20,823.5 | 6,024.2 | 14,490.7 | 12,303.4 | 6,670.6 | 86,040.4 | 5,496.8 | 5,467.3 | -471.5 | 96,533.0 |
| 2019 | 1,521.2 | 9,871.2 | 5,877.7 | 1,031.7 | 7,469.8 | 21,683.3 | 6,344.1 | 15,344.1 | 12,755.2 | 6,868.4 | 88,766.8 | 5,493.5 | 5,635.3 | -499.2 | 99,396.3 |
| 2004 Q1 | 224.0 | 3,333.2 | 623.7 | 221.4 | 663.0 | 1,352.4 | 436.4 | 1,544.3 | 1,895.8 | 546.0 | 10,840.2 | 621.2 | 770.7 | -58.0 | 12,174.0 |
| 2004 Q2 | 369.1 | 3,552.5 | 620.5 | 209.3 | 608.9 | 1,354.2 | 396.5 | 1,477.6 | 2,054.1 | 526.6 | 11,169.3 | 809.4 | 434.8 | -60.5 | 12,353.1 |
| 2004 Q3 | 302.9 | 4,921.1 | 638.9 | 219.4 | 629.8 | 1,317.7 | 444.7 | 1,617.3 | 2,077.1 | 549.3 | 12,718.4 | 731.9 | 331.7 | -55.7 | 13,726.4 |
| 2004 Q4 | 199.8 | 4,898.1 | 672.0 | 236.7 | 576.8 | 1,297.1 | 457.4 | 1,633.8 | 2,054.6 | 554.8 | 12,581.3 | 719.6 | 675.3 | -62.0 | 13,914.2 |
| 2005 Q1 | 270.8 | 3,807.3 | 618.9 | 190.4 | 614.3 | 1,313.8 | 465.4 | 1,550.2 | 1,878.8 | 627.5 | 11,337.2 | 807.8 | 753.5 | -59.0 | 12,839.5 |
| 2005 Q2 | 290.4 | 4,333.9 | 627.7 | 186.9 | 612.0 | 1,350.1 | 460.8 | 1,507.9 | 1,936.1 | 630.7 | 11,936.5 | 725.8 | 423.4 | -65.8 | 13,019.9 |
| 2005 Q3 | 324.3 | 4,923.6 | 679.7 | 188.9 | 611.9 | 1,386.0 | 527.1 | 1,658.4 | 2,020.4 | 660.8 | 12,981.1 | 652.3 | 614.1 | -62.7 | 14,184.8 |
| 2005 Q4 | 182.8 | 5,023.0 | 676.1 | 196.1 | 610.4 | 1,471.3 | 525.2 | 1,645.3 | 2,158.2 | 663.7 | 13,151.9 | 1,016.9 | 401.6 | -69.9 | 14,500.6 |
| 2006 Q1 | 342.4 | 4,585.3 | 746.6 | 193.6 | 677.3 | 1,733.6 | 540.2 | 1,685.7 | 1,790.2 | 740.2 | 13,035.1 | 791.9 | 646.9 | -68.5 | 14,405.4 |
| 2006 Q2 | 244.3 | 4,577.9 | 734.5 | 191.5 | 680.2 | 1,710.6 | 553.9 | 1,643.9 | 2,024.1 | 728.5 | 13,089.3 | 853.7 | 503.8 | -74.5 | 14,372.3 |
| 2006 Q3 | 376.6 | 4,985.1 | 804.9 | 196.4 | 798.4 | 1,763.6 | 567.5 | 1,719.8 | 1,997.8 | 745.4 | 13,955.4 | 940.8 | 526.7 | -69.8 | 15,353.1 |
| 2006 Q4 | 247.4 | 4,870.7 | 837.1 | 203.6 | 682.1 | 1,824.5 | 588.9 | 1,626.1 | 2,006.4 | 724.9 | 13,611.8 | 842.5 | 598.9 | -77.1 | 14,976.1 |
| 2007 Q1 | 332.6 | 4,517.8 | 931.8 | 193.1 | 791.7 | 1,957.8 | 602.0 | 1,923.3 | 1,966.2 | 769.2 | 13,985.4 | 810.4 | 614.2 | -74.9 | 15,335.1 |
| 2007 Q2 | 411.0 | 4,441.3 | 1,032.6 | 192.2 | 851.5 | 2,026.7 | 650.5 | 1,843.8 | 2,132.9 | 780.1 | 14,362.6 | 1,139.6 | 669.5 | -83.7 | 16,088.0 |
| 2007 Q3 | 409.1 | 4,523.4 | 999.9 | 183.0 | 879.4 | 1,981.0 | 667.9 | 1,922.4 | 2,094.2 | 823.4 | 14,483.8 | 1,151.5 | 761.8 | -79.6 | 16,317.6 |
| 2007 Q4 | 206.2 | 4,631.2 | 961.3 | 178.0 | 974.4 | 2,138.9 | 677.1 | 1,736.1 | 2,062.9 | 807.0 | 14,373.1 | 1,159.7 | 814.4 | -88.8 | 16,258.4 |
| 2008 Q1 | 302.4 | 4,700.9 | 893.7 | 188.2 | 907.0 | 2,303.4 | 697.1 | 1,848.4 | 1,840.6 | 917.7 | 14,599.5 | 1,098.3 | 783.1 | -83.1 | 16,397.8 |
| 2008 Q2 | 404.1 | 4,570.7 | 1,020.1 | 194.2 | 874.9 | 2,375.3 | 705.7 | 2,075.4 | 2,141.6 | 877.4 | 15,239.5 | 1,108.0 | 808.2 | -90.4 | 17,065.3 |
| 2008 Q3 | 393.3 | 4,892.7 | 985.3 | 199.6 | 864.7 | 2,396.9 | 723.5 | 2,091.1 | 2,142.1 | 922.9 | 15,612.1 | 1,112.6 | 967.8 | -84.9 | 17,607.6 |
| 2008 Q4 | 285.9 | 3,996.5 | 925.8 | 213.5 | 877.7 | 2,485.2 | 735.6 | 2,278.6 | 2,152.3 | 945.8 | 14,896.9 | 1,115.3 | 1,007.4 | -94.2 | 16,925.3 |
| 2009 Q1 | 373.1 | 2,011.2 | 1,036.1 | 171.4 | 977.2 | 2,466.2 | 774.8 | 2,135.5 | 2,061.2 | 1,023.9 | 13,030.5 | 931.5 | 971.4 | -89.8 | 14,843.7 |
| 2009 Q2 | 360.6 | 2,721.6 | 1,040.6 | 185.4 | 999.8 | 2,584.3 | 787.6 | 2,093.6 | 2,158.3 | 1,006.1 | 13,938.0 | 975.3 | 995.4 | -97.2 | 15,811.5 |
| 2009 Q3 | 404.8 | 2,616.2 | 943.4 | 184.9 | 1,035.2 | 2,504.3 | 846.0 | 2,016.1 | 2,149.1 | 1,040.0 | 13,740.1 | 1,008.1 | 1,124.9 | -90.3 | 15,782.8 |
| 2009 Q4 | 335.5 | 3,117.0 | 996.4 | 212.2 | 946.5 | 2,375.0 | 876.9 | 2,169.7 | 2,142.0 | 1,006.2 | 14,177.3 | 1,089.5 | 1,186.2 | -98.2 | 16,354.8 |
| 2010 Q1 | 355.1 | 3,148.6 | 995.2 | 234.5 | 963.4 | 2,536.8 | 831.0 | 2,252.4 | 2,218.9 | 1,083.9 | 14,619.9 | 910.0 | 1,057.4 | -83.2 | 16,504.1 |
| 2010 Q2 | 432.8 | 2,905.5 | 1,024.9 | 202.3 | 940.2 | 2,719.6 | 848.2 | 2,368.4 | 2,253.0 | 1,081.3 | 14,776.1 | 874.4 | 1,084.1 | -92.1 | 16,642.5 |
| 2010 Q3 | 413.8 | 3,474.0 | 1,049.3 | 208.3 | 1,078.3 | 2,808.9 | 906.9 | 2,303.4 | 2,327.5 | 1,099.7 | 15,670.2 | 914.2 | 1,101.1 | -87.5 | 17,598.1 |
| 2010 Q4 | 358.0 | 3,068.1 | 1,104.1 | 199.1 | 1,119.5 | 2,786.7 | 910.7 | 2,455.0 | 2,351.2 | 1,064.8 | 15,417.2 | 980.8 | 1,124.5 | -97.1 | 17,425.4 |

Table 3 Continued : Value Added by Kind of Economic Activity at Constant 2006 Prices (P million)

| Calendar year | Agriculture | Mining | Manufacturing | Water & Electricity | Construction | Trade, Hotels & Restaurants | Transport & Communication | Finance & Business Service | General Govern-ment | Social & Personal Services | Value Added | Taxes on Import | Other Taxes on products | Subsidies | Total GDP |
|---------------|-------------|---------|---------------|---------------------|--------------|-----------------------------|---------------------------|----------------------------|---------------------|----------------------------|-------------|-----------------|-------------------------|-----------|-----------------|
| 2011 Q1 | 350.7 | 3,021.8 | 1,123.2 | 148.6 | 1,183.9 | 3,144.7 | 912.6 | 2,478.9 | 2,211.0 | 1,130.8 | 15,706.2 | 713.0 | 1,163.4 | -92.9 | 17,489.7 |
| 2011 Q2 | 388.1 | 3,096.8 | 1,098.5 | 141.5 | 1,183.9 | 2,949.1 | 904.9 | 2,465.1 | 2,400.2 | 1,120.3 | 15,748.4 | 1,141.5 | 1,178.6 | -81.8 | 17,986.8 |
| 2011 Q3 | 397.2 | 2,914.4 | 1,166.5 | 120.0 | 1,320.4 | 3,011.0 | 944.5 | 2,479.2 | 2,377.7 | 1,198.3 | 15,929.2 | 1,127.2 | 951.7 | -90.2 | 17,917.8 |
| 2011 Q4 | 426.5 | 2,749.3 | 1,259.1 | 145.2 | 1,359.0 | 3,243.3 | 946.6 | 2,674.8 | 2,734.1 | 1,240.4 | 16,778.2 | 1,046.3 | 1,166.8 | -92.3 | 18,899.0 |
| 2012 Q1 | 366.1 | 2,934.8 | 1,234.5 | 167.9 | 1,422.2 | 3,196.4 | 1,014.0 | 2,647.2 | 2,514.7 | 1,243.2 | 16,741.0 | 965.2 | 1,069.7 | -90.5 | 18,685.5 |
| 2012 Q2 | 358.3 | 2,917.5 | 1,174.0 | 83.2 | 1,438.6 | 3,241.8 | 1,025.4 | 2,688.9 | 2,391.9 | 1,281.7 | 16,601.3 | 988.0 | 1,084.0 | -90.9 | 18,582.4 |
| 2012 Q3 | 359.4 | 2,224.0 | 1,208.4 | 92.8 | 1,452.2 | 3,370.3 | 1,038.9 | 2,811.3 | 2,363.8 | 1,323.4 | 16,244.5 | 1,114.0 | 1,174.5 | -92.8 | 18,440.3 |
| 2012 Q4 | 345.3 | 3,025.0 | 1,202.5 | 59.0 | 1,461.8 | 3,379.6 | 1,033.6 | 2,870.8 | 2,722.9 | 1,343.6 | 17,444.0 | 1,263.7 | 1,193.1 | -94.2 | 19,806.6 |
| 2013 Q1 | 347.7 | 3,081.0 | 1,226.1 | 205.8 | 1,484.7 | 3,612.4 | 1,067.5 | 3,041.1 | 2,743.3 | 1,379.3 | 18,188.9 | 1,253.0 | 1,164.8 | -98.7 | 20,508.0 |
| 2013 Q2 | 370.5 | 3,816.9 | 1,293.3 | 189.7 | 1,503.8 | 3,632.4 | 1,083.6 | 2,946.8 | 2,557.4 | 1,385.7 | 18,780.1 | 1,137.4 | 1,108.9 | -94.6 | 20,931.9 |
| 2013 Q3 | 371.9 | 3,258.7 | 1,319.6 | 231.6 | 1,506.0 | 3,973.0 | 1,131.5 | 2,952.6 | 2,517.5 | 1,404.0 | 18,666.5 | 1,180.2 | 1,169.9 | -99.4 | 20,917.2 |
| 2013 Q4 | 358.0 | 3,627.7 | 1,295.4 | 47.7 | 1,516.5 | 4,080.4 | 1,140.0 | 3,033.0 | 2,773.8 | 1,438.6 | 19,311.0 | 1,316.1 | 1,199.0 | -102.4 | 21,723.7 |
| 2014 Q1 | 348.9 | 3,226.5 | 1,205.8 | 78.8 | 1,521.8 | 4,140.0 | 1,167.2 | 3,011.5 | 2,668.8 | 1,434.7 | 18,804.0 | 1,286.6 | 1,203.0 | -104.0 | 21,189.6 |
| 2014 Q2 | 370.7 | 3,561.6 | 1,271.4 | 106.2 | 1,558.3 | 4,153.7 | 1,206.6 | 3,021.3 | 2,853.2 | 1,446.8 | 19,549.6 | 1,238.1 | 1,201.1 | -101.6 | 21,887.2 |
| 2014 Q3 | 360.1 | 3,442.9 | 1,322.4 | 60.3 | 1,573.7 | 4,328.9 | 1,246.2 | 3,119.2 | 2,842.8 | 1,473.2 | 19,769.9 | 1,286.9 | 1,225.4 | -103.7 | 22,178.5 |
| 2014 Q4 | 363.4 | 3,620.2 | 1,360.7 | 53.2 | 1,580.9 | 4,310.5 | 1,234.6 | 3,139.1 | 2,714.5 | 1,488.6 | 19,865.8 | 1,334.2 | 1,215.2 | -101.0 | 22,314.2 |
| 2015 Q1 | 353.5 | 3,290.4 | 1,285.9 | 93.7 | 1,596.4 | 4,076.9 | 1,215.4 | 3,110.3 | 2,863.0 | 1,499.7 | 19,385.3 | 1,299.4 | 1,196.4 | -105.4 | 21,775.7 |
| 2015 Q2 | 374.8 | 3,273.0 | 1,346.3 | 48.5 | 1,619.8 | 3,966.1 | 1,250.2 | 3,151.5 | 2,867.1 | 1,506.7 | 19,403.9 | 1,303.2 | 1,221.0 | -105.9 | 21, |

Table 4: Percentage Change in Gross Value Added by Kind of Economic Activity at Constant 2006 Prices

| Calendar year | Agriculture | Mining | Manufacturing | Water & Electricity | Construction | Trade, Hotels & Restaurants | Transport & Communication | Finance & Business Service | General Government | Social & Personal Services | Value Added | Taxes on Import | Other Taxes on products | Subsidies | Total GDP |
|---------------|-------------|--------|---------------|---------------------|--------------|-----------------------------|---------------------------|----------------------------|--------------------|----------------------------|-------------|-----------------|-------------------------|-----------|--------------|
| 2005 | -2.5 | 8.3 | 1.8 | -14.1 | -1.2 | 3.8 | 14.0 | 1.4 | -1.1 | 18.6 | 4.4 | 11.1 | -0.9 | 9.0 | 4.6 |
| 2006 | 13.3 | 5.1 | 20.0 | 3.0 | 15.9 | 27.4 | 13.8 | 4.9 | -2.2 | 13.8 | 8.7 | 7.1 | 3.8 | 12.6 | 8.4 |
| 2007 | 12.2 | -4.8 | 25.7 | -4.9 | 23.2 | 15.2 | 15.4 | 11.2 | 5.6 | 8.2 | 6.5 | 24.3 | 25.6 | 12.8 | 8.3 |
| 2008 | 2.0 | 0.3 | -2.6 | 6.6 | 0.8 | 18.0 | 10.2 | 11.7 | 0.2 | 15.2 | 5.5 | 4.1 | 24.7 | 7.8 | 6.2 |
| 2009 | 6.4 | -42.4 | 5.0 | -5.2 | 12.3 | 3.9 | 14.8 | 1.5 | 2.8 | 11.3 | -9.1 | -9.7 | 20.0 | 6.5 | -7.7 |
| 2010 | 5.8 | 20.4 | 3.9 | 12.0 | 3.6 | 9.3 | 6.4 | 11.5 | 7.5 | 6.2 | 10.2 | -8.1 | 2.1 | -4.2 | 8.6 |
| 2011 | 0.2 | -6.5 | 11.4 | -34.2 | 23.1 | 13.8 | 6.1 | 7.7 | 6.3 | 8.3 | 6.1 | 9.5 | 2.1 | -0.7 | 6.0 |
| 2012 | -8.5 | -5.8 | 3.7 | -27.5 | 14.4 | 6.8 | 10.9 | 9.1 | 2.8 | 10.7 | 4.5 | 7.5 | 1.4 | 3.1 | 4.5 |
| 2013 | 1.3 | 24.2 | 6.5 | 67.5 | 4.1 | 16.0 | 7.6 | 8.7 | 6.0 | 8.0 | 11.8 | 12.8 | 2.7 | 7.3 | 11.3 |
| 2014 | -0.4 | 0.5 | 0.5 | -55.8 | 3.7 | 10.7 | 9.8 | 2.7 | 4.6 | 4.2 | 4.1 | 5.3 | 4.4 | 3.8 | 4.1 |
| 2015 | 0.3 | -19.6 | 3.2 | 7.0 | 4.0 | -3.9 | 4.5 | 4.5 | 3.3 | 3.6 | -2.0 | 0.6 | 2.0 | 3.5 | -1.7 |
| 2016 | 0.6 | -3.5 | 1.6 | 95.2 | 4.2 | 13.4 | 6.6 | 3.3 | 2.4 | 3.5 | 4.8 | -0.4 | 0.8 | 3.2 | 4.3 |
| 2017 | 1.9 | -11.1 | 2.2 | 39.9 | 3.5 | 9.0 | 4.7 | 4.1 | 1.5 | 2.8 | 2.8 | 3.6 | 3.8 | 1.4 | 2.9 |
| 2018 | 2.6 | 7.6 | 3.4 | 11.3 | 3.7 | 3.6 | 6.4 | 5.0 | 3.4 | 3.6 | 4.5 | 2.9 | 5.8 | 6.1 | 4.5 |
| 2019 | -0.1 | -3.9 | 2.8 | 6.3 | 3.0 | 4.1 | 5.3 | 5.9 | 3.7 | 3.0 | 3.2 | -0.1 | 3.1 | 5.9 | 3.0 |
| 2005 Q1 | 20.9 | 14.2 | -0.8 | -14.0 | -7.3 | -2.9 | 6.6 | 0.4 | -0.9 | 14.9 | 4.6 | 30.0 | -2.2 | 1.7 | 5.5 |
| Q2 | -21.3 | 22.0 | 1.2 | -10.7 | 0.5 | -0.3 | 16.2 | 2.1 | -5.7 | 19.8 | 6.9 | -10.3 | -2.6 | 8.9 | 5.4 |
| Q3 | 7.1 | 0.1 | 6.4 | -13.9 | -2.8 | 5.2 | 18.5 | 2.5 | -2.7 | 20.3 | 2.1 | -10.9 | 85.1 | 12.6 | 3.3 |
| Q4 | -8.5 | 2.5 | 0.6 | -17.2 | 5.8 | 13.4 | 14.8 | 0.7 | 5.0 | 19.6 | 4.5 | 41.3 | -40.5 | 12.7 | 4.2 |
| 2006 Q1 | 26.5 | 20.4 | 20.6 | 1.7 | 10.3 | 32.0 | 16.1 | 8.7 | -4.7 | 18.0 | 15.0 | -2.0 | -14.2 | 16.0 | 12.2 |
| Q2 | -15.9 | 5.6 | 17.0 | 2.5 | 11.1 | 26.7 | 20.2 | 9.0 | 4.5 | 15.5 | 9.7 | 17.6 | 19.0 | 13.1 | 10.4 |
| Q3 | 16.1 | 1.2 | 18.4 | 4.0 | 30.5 | 27.2 | 7.7 | 3.7 | -1.1 | 12.8 | 7.5 | 44.2 | -14.2 | 11.4 | 8.2 |
| Q4 | 35.3 | -3.0 | 23.8 | 3.9 | 11.7 | 24.0 | 12.1 | -1.2 | -7.0 | 9.2 | 3.5 | -17.1 | 49.1 | 10.3 | 3.3 |
| 2007 Q1 | -2.9 | -1.5 | 24.8 | -0.2 | 16.9 | 12.9 | 11.4 | 14.1 | 9.8 | 3.9 | 7.3 | 2.3 | -5.0 | 9.4 | 6.5 |
| Q2 | 68.3 | -3.0 | 40.6 | 0.4 | 25.2 | 18.5 | 17.4 | 12.2 | 5.4 | 7.1 | 9.7 | 33.5 | 32.9 | 12.4 | 11.9 |
| Q3 | 8.6 | -9.3 | 24.2 | -6.8 | 10.1 | 12.3 | 17.7 | 11.8 | 4.8 | 10.5 | 3.8 | 22.4 | 44.6 | 14.1 | 6.3 |
| Q4 | -16.7 | -4.9 | 14.8 | -12.6 | 42.9 | 17.2 | 15.0 | 6.8 | 2.8 | 11.3 | 5.6 | 37.6 | 36.0 | 15.2 | 8.6 |
| 2008 Q1 | -9.1 | 4.1 | -4.1 | -2.5 | 14.6 | 17.7 | 15.8 | -3.9 | -6.4 | 19.3 | 4.4 | 35.5 | 27.5 | 10.9 | 6.9 |
| Q2 | -1.7 | 2.9 | -1.2 | 1.1 | 2.7 | 17.2 | 8.5 | 12.6 | 0.4 | 12.5 | 6.1 | -2.8 | 20.7 | 8.0 | 6.1 |
| Q3 | -3.9 | 8.2 | -1.5 | 9.1 | -1.7 | 21.0 | 8.3 | 8.8 | 2.3 | 12.1 | 7.8 | -3.4 | 27.0 | 6.6 | 7.9 |
| Q4 | 38.7 | -13.7 | -3.7 | 19.9 | -9.9 | 16.2 | 8.6 | 31.2 | 4.3 | 17.2 | 3.6 | -3.8 | 23.7 | 6.2 | 4.1 |
| 2009 Q1 | 23.4 | -57.2 | 15.9 | -9.0 | 7.7 | 7.1 | 11.1 | 15.5 | 12.0 | 11.6 | -10.7 | -15.2 | 24.1 | 8.1 | -9.5 |
| Q2 | -10.8 | -40.5 | 2.0 | -4.5 | 14.3 | 8.8 | 11.6 | 0.9 | 0.8 | 14.7 | -8.5 | -12.0 | 23.2 | 7.6 | -7.3 |
| Q3 | 2.9 | -46.5 | -4.3 | -7.4 | 19.7 | 4.5 | 16.9 | -3.6 | 0.3 | 12.7 | -12.0 | -9.4 | 16.2 | 6.4 | -10.4 |
| Q4 | 17.4 | -22.0 | 7.6 | -0.6 | 7.8 | -4.4 | 19.2 | -4.8 | -0.5 | 6.4 | -4.8 | -2.3 | 17.8 | 4.2 | -3.4 |
| 2010 Q1 | -4.8 | 56.6 | -3.9 | 36.9 | -1.4 | 2.9 | 7.3 | 5.5 | 7.7 | 5.9 | 12.2 | -2.3 | 8.9 | -7.4 | 11.2 |
| Q2 | 20.0 | 6.8 | -1.5 | 9.1 | -6.0 | 5.2 | 7.7 | 13.1 | 4.4 | 7.5 | 6.0 | -10.3 | 8.9 | -5.3 | 5.3 |
| Q3 | 2.2 | 32.8 | 11.2 | 12.7 | 4.2 | 12.2 | 7.2 | 14.3 | 8.3 | 5.7 | 14.0 | -9.3 | -2.1 | -3.2 | 11.5 |
| Q4 | 6.7 | -1.6 | 10.8 | -6.2 | 18.3 | 17.3 | 3.9 | 13.2 | 9.8 | 5.8 | 8.7 | -10.0 | -5.2 | -1.1 | 6.5 |
| 2011 Q1 | -1.2 | -4.0 | 12.9 | -36.6 | 22.9 | 24.0 | 9.8 | 10.1 | -0.4 | 4.3 | 7.4 | -21.7 | 10.0 | 11.6 | 6.0 |
| Q2 | -10.3 | 6.6 | 7.2 | -30.0 | 25.9 | 8.4 | 6.7 | 4.1 | 6.5 | 3.6 | 6.6 | 30.6 | 8.7 | -11.2 | 8.1 |
| Q3 | -4.0 | -16.1 | 11.2 | -42.4 | 22.5 | 7.2 | 4.1 | 7.6 | 2.2 | 9.0 | 1.7 | 23.3 | -13.6 | 3.2 | 1.8 |
| Q4 | 19.1 | -10.4 | 14.0 | -27.1 | 21.4 | 16.4 | 3.9 | 9.0 | 16.3 | 16.5 | 8.8 | 6.7 | 3.8 | -4.9 | 8.5 |
| 2012 Q1 | 4.4 | -2.9 | 9.9 | 12.9 | 20.1 | 1.6 | 11.1 | 6.8 | 13.7 | 9.9 | 6.6 | 35.4 | -8.1 | -2.6 | 6.8 |
| Q2 | -7.7 | -5.8 | 6.9 | -41.2 | 21.5 | 9.9 | 13.3 | 9.1 | -0.3 | 14.4 | 5.4 | -13.4 | -8.0 | 11.1 | 3.3 |
| Q3 | -9.5 | -23.7 | 3.6 | -22.7 | 10.0 | 11.9 | 10.0 | 13.4 | -0.6 | 10.4 | 2.0 | -1.2 | 23.4 | 2.8 | 2.9 |
| Q4 | -19.0 | 10.0 | -4.5 | -59.3 | 7.6 | 4.2 | 9.2 | 7.3 | -0.4 | 8.3 | 4.0 | 20.8 | 2.2 | 2.1 | 4.8 |

Table 4 Continued : Percentage Change in Gross Value Added by Kind of Economic Activity at constant 2006 Prices

| Calendar year | Agriculture | Mining | Manufacturing | Water & Electricity | Construction | Trade, Hotels & Restaurants | Transport & Communication | Finance & Business Service | General Government | Social & Personal Services | Value Added | Taxes on Import | Other Taxes on products | Subsidies | Total GDP |
|---------------|-------------|--------|---------------|---------------------|--------------|-----------------------------|---------------------------|----------------------------|--------------------|----------------------------|-------------|-----------------|-------------------------|-----------|-------------|
| 2013 Q1 | -5.0 | 5.0 | -0.7 | 22.6 | 4.4 | 13.0 | 5.3 | 14.9 | 9.1 | 10.9 | 8.6 | 29.8 | 8.9 | 9.0 | 9.8 |
| Q2 | 3.4 | 30.8 | 10.2 | 128.0 | 4.5 | 12.1 | 5.7 | 9.6 | 6.9 | 8.1 | 13.1 | 15.1 | 2.3 | 4.0 | 12.6 |
| Q3 | 3.5 | 46.5 | 9.2 | 149.6 | 3.7 | 17.9 | 8.9 | 5.0 | 6.5 | 6.1 | 14.9 | 5.9 | -0.4 | 7.2 | 13.4 |
| Q4 | 3.7 | 19.9 | 7.7 | -19.2 | 3.7 | 20.7 | 10.3 | 5.7 | 1.9 | 7.1 | 10.7 | 4.1 | 0.5 | 8.7 | 9.7 |
| 2014 Q1 | 0.3 | 4.7 | -1.7 | -61.7 | 2.5 | 14.6 | 9.3 | -1.0 | -2.7 | 4.0 | 3.4 | 2.7 | 3.3 | 5.4 | 3.3 |
| Q2 | 0.0 | -6.7 | -1.7 | -44.0 | 3.6 | 14.3 | 11.3 | 2.5 | 11.6 | 4.4 | 4.1 | 8.8 | 8.3 | 7.4 | 4.6 |
| Q3 | -3.2 | 5.7 | 0.2 | -74.0 | 4.5 | 9.0 | 10.1 | 5.6 | 12.9 | 4.9 | 5.9 | 9.0 | 4.7 | 4.3 | 6.0 |
| Q4 | 1.5 | -0.2 | 5.0 | 11.6 | 4.2 | 5.6 | 8.3 | 3.5 | -2.1 | 3.5 | 2.9 | 1.4 | 1.3 | -1.4 | 2.7 |
| 2015 Q1 | 1.3 | 2.0 | 6.6 | 18.9 | 4.9 | -1.5 | 4.1 | 3.3 | 7.3 | 4.5 | 3.1 | 1.0 | -0.6 | 1.3 | 2.8 |
| Q2 | 1.1 | -8.1 | 5.9 | -54.4 | 3.9 | -4.5 | 3.6 | 4.3 | 0.5 | 4.1 | -0.7 | 5.3 | 1.7 | 4.3 | -0.3 |
| Q3 | -0.5 | -40.5 | 2.1 | 22.3 | 3.4 | -6.1 | 5.0 | 4.3 | 2.1 | 2.9 | -6.4 | 2.1 | 3.0 | 3.6 | -5.4 |
| Q4 | -0.7 | -30.4 | -1.1 | 94.4 | 3.6 | -3.5 | 5.4 | 6.1 | 3.5 | 3.0 | -3.8 | -5.7 | 3.7 | 4.9 | -3.6 |
| 2016 Q1 | -1.8 | -5.5 | -0.4 | 37.1 | 3.4 | 5.5 | 7.1 | 5.1 | 1.6 | 2.9 | 2.3 | 1.1 | 1.5 | 1.8 | 2.2 |
| Q2 | -1.4 | -13.6 | 1.1 | 231.8 | 4.6 | 20.2 | 5.5 | 3.1 | 2.5 | 3.2 | 4.3 | -1.9 | 2.8 | 2.8 | 3.9 |
| Q3 | 4.0 | 18.6 | 2.6 | 19.2 | 4.2 | 16.3 | 6.2 | 2.6 | 2.2 | 4.1 | 7.9 | -2.6 | 1.2 | 3.6 | 6.9 |
| Q4 | 1.6 | -6.0 | 2.8 | 138.0 | 4.7 | 11.9 | 7.4 | 2.6 | 3.2 | 3.8 | 4.9 | 1.9 | -2.3 | 4.8 | 4.3 |
| 2017 Q1 | 2.8 | -28.9 | 0.4 | 7.2 | 4.0 | 18.1 | 4.4 | 4.4 | 0.7 | 3.2 | 1.2 | -0.6 | -1.5 | 3.3 | 1.0 |
| Q2 | 0.9 | -13.4 | 0.3 | 64.2 | 3.3 | 1.1 | 6.0 | 4.5 | 0.9 | 3.1 | 0.7 | 4.5 | 0.1 | 1.9 | 0.9 |
| Q3 | 1.8 | 3.3 | 3.6 | 127.9 | 3.5 | 0.5 | 4.6 | 3.7 | 1.4 | 2.5 | 3.0 | 5.5 | 7.2 | -0.1 | 3.4 |
| Q4 | 2.3 | 0.3 | 4.3 | 9.6 | 3.3 | 17.1 | 3.8 | 3.6 | 3.1 | 2.3 | 6.3 | 5.2 | 9.1 | 0.5 | 6.4 |
| 2018 Q1 | 2.8 | 12.1 | 4.4 | 46.9 | 3.5 | -1.8 | 6.6 | 4.8 | 2.7 | 3.1 | 3.7 | 7.2 | 10.4 | 2.8 | 4.3 |
| Q2 | 2.7 | 7.5 | 3.5 | -1.4 | 4.1 | 9.5 | 6.1 | 5.1 | 3.2 | 3.2 | 5.7 | 2.3 | 1.6 | 5.3 | 5.3 |
| Q3 | 2.8 | -2.6 | 2.3 | 23.1 | 3.9 | 7.3 | 5.9 | 5.1 | 3.6 | 3.9 | 4.3 | 1.0 | 5.2 | 7.8 | 4.1 |
| Q4 | 2.2 | 14.1 | 3.4 | -3.2 | 3.3 | 0.1 | 7.1 | 4.8 | 4.2 | 4.0 | 4.3 | 1.4 | 6.3 | 8.3 | 4.2 |
| 2019 Q1 | 2.5 | 3.4 | 3.2 | 2.8 | 2.7 | 5.6 | 5.7 | 5.3 | 3.4 | 3.8 | 4.4 | 1.6 | 5.8 | 8.5 | 4.2 |
| Q2 | -0.5 | -7.9 | 3.5 | -1.2 | 3.0 | 5.1 | 5.4 | 6.0 | 4.2 | 3.1 | 2.9 | 2.2 | 5.5 | 6.4 | 3.0 |
| Q3 | -1.4 | -2.2 | 3.0 | 0.1 | 3.2 | 4.9 | 5.3 | 6.4 | 3.6 | 2.5 | 3.6 | -2.2 | 0.6 | 4.7 | 3.1 |
| Q4 | -1.0 | -8.1 | 1.8 | 22.3 | 3.1 | 1.1 | 4.8 | 5.9 | 3.5 | 2.5 | 1.9 | -1.9 | 0.8 | 4.1 | 1.6 |

Table 5: Gross Domestic Product by Type of Expenditure at Current Prices (P million)

| Calendar year | Government Final Consumption | | | Non-Profit Institutions | Household Final Consumption | | Total | Gross Fixed Capital Formation | | | | | Change in Inventories | | | | Gross Domestic Expenditure | Exports | | | Imports | | | Errors & Omissions | Total GDP |
|---------------|------------------------------|------------|----------|-------------------------|-----------------------------|---------------------------------|-----------|-------------------------------|-----------------------|---------------------|---------------------|----------|-----------------------|----------|----------|----------|----------------------------|----------|----------|----------|----------|----------|----------|--------------------|-----------|
| | Central Govt | Local Govt | Total | | Household Consumption (Mkt) | Household Consumption (Non-Mkt) | | Construction | Machinery & Equipment | Transport Equipment | Mineral Prospecting | Total | Livestock | Minerals | Others | Total | | Goods | Services | Total | Goods | Services | Total | | |
| | | | | | | | | | | | | | | | | | | | | | | | | | |
| 2004 | 7,311.3 | 1,319.8 | 8,631.1 | 796.4 | 13,795.9 | 2,132.5 | 16,724.8 | 6,937.7 | 3,531.7 | 1,019.8 | 214.4 | 11,703.7 | 87.8 | 1,986.6 | 930.2 | 3,004.6 | 40,064.1 | 17,344.6 | 3,511.3 | 20,855.9 | 13,475.6 | 3,920.8 | 17,396.4 | -1,487.0 | 42,036.6 |
| 2005 | 8,361.6 | 1,484.7 | 9,846.3 | 1,013.0 | 16,096.4 | 2,230.5 | 19,340.0 | 8,035.7 | 3,624.8 | 950.4 | 249.7 | 12,860.5 | 74.1 | 32.9 | 829.2 | 936.3 | 42,983.0 | 22,708.3 | 4,151.5 | 26,859.8 | 13,729.2 | 4,329.3 | 18,058.5 | -1,032.1 | 50,752.2 |
| 2006 | 8,502.4 | 1,568.1 | 10,070.5 | 1,217.0 | 19,222.9 | 2,452.8 | 22,892.7 | 9,930.8 | 4,095.6 | 1,159.8 | 300.5 | 15,486.6 | 160.7 | 391.2 | 828.2 | 1,380.1 | 49,830.0 | 26,386.1 | 4,499.9 | 30,886.0 | 15,283.9 | 4,859.8 | 20,143.7 | -1,465.4 | 59,106.9 |
| 2007 | 9,989.2 | 1,826.2 | 11,815.4 | 1,335.0 | 22,220.5 | 3,066.7 | 26,622.2 | 11,421.2 | 5,515.0 | 1,768.0 | 357.2 | 19,061.5 | 217.9 | -775.7 | 1,357.0 | 799.2 | 58,298.3 | 31,692.0 | 4,917.0 | 36,609.0 | 21,228.0 | 6,028.3 | 27,256.3 | -498.3 | 67,152.7 |
| 2008 | 12,936.1 | 2,270.6 | 15,206.6 | 1,147.1 | 27,967.0 | 3,815.0 | 32,929.1 | 12,052.9 | 8,122.2 | 2,430.4 | 246.1 | 22,851.6 | 184.0 | 6,185.2 | 1,922.6 | 8,291.8 | 79,279.1 | 32,757.0 | 1,371.0 | 34,128.0 | 35,330.0 | 2,809.0 | 38,139.0 | -547.2 | 74,720.9 |
| 2009 | 12,971.2 | 2,521.7 | 15,492.9 | 1,217.0 | 32,077.5 | 3,929.1 | 37,223.5 | 14,587.8 | 8,077.9 | 2,665.8 | 313.9 | 25,645.5 | 191.8 | -5,402.1 | 2,214.8 | -2,995.5 | 75,366.4 | 23,866.0 | 1,699.6 | 25,565.6 | 33,346.0 | 4,770.0 | 38,116.0 | 10,646.4 | 73,462.4 |
| 2010 | 14,363.6 | 2,798.3 | 17,162.0 | 1,335.0 | 37,195.1 | 4,161.9 | 42,692.1 | 16,852.9 | 9,484.8 | 2,510.7 | 353.2 | 29,201.5 | 253.8 | 1,491.1 | 2,109.3 | 3,854.2 | 92,909.7 | 31,237.0 | 6,668.0 | 37,905.0 | 38,035.0 | 6,497.0 | 44,532.0 | 584.7 | 86,867.4 |
| 2011 | 16,592.9 | 2,814.4 | 19,407.3 | 1,464.6 | 42,755.9 | 4,408.6 | 48,629.1 | 19,364.4 | 10,907.5 | 2,962.6 | 406.1 | 33,640.6 | 1.3 | 1,576.1 | 2,001.1 | 3,578.5 | 105,255.5 | 44,043.0 | 8,395.0 | 52,438.0 | 48,821.0 | 7,443.0 | 56,264.0 | 3,550.4 | 104,979.9 |
| 2012 | 18,342.9 | 2,852.7 | 21,195.6 | 1,995.2 | 50,789.5 | 4,315.5 | 57,100.3 | 23,308.9 | 12,601.9 | 3,437.1 | 455.5 | 39,803.5 | 187.6 | (610.1) | 2,460.8 | 2,038.3 | 120,137.6 | 45,886.0 | 8,226.0 | 54,112.0 | 61,074.0 | 6,391.0 | 67,465.0 | 3,085.8 | 109,870.4 |
| 2013 | 20,005.4 | 3,209.3 | 23,214.7 | 2,154.9 | 57,512.1 | 5,442.5 | 65,109.5 | 26,629.9 | 12,316.1 | 2,408.1 | 571.0 | 41,925.1 | -261.6 | -4,752.3 | -103.3 | -5,117.2 | 125,132.2 | 66,563.7 | 10,437.0 | 77,000.7 | 68,902.2 | 7,483.1 | 76,385.3 | -589.2 | 125,158.3 |
| 2014 | 25,343.8 | 3,733.9 | 29,077.7 | 2,308.3 | 60,279.5 | 5,887.0 | 68,474.7 | 28,775.8 | 12,346.4 | 2,697.1 | 613.3 | 44,432.7 | 165.0 | -417.1 | -3,047.0 | -3,299.1 | 138,686.0 | 76,447.6 | 8,837.1 | 85,284.7 | 69,794.6 | 11,042.8 | 80,837.4 | 2,735.3 | 145,868.6 |
| 2015 | 26,034.1 | 4,022.6 | 30,056.7 | 2,460.1 | 67,187.3 | 6,337.2 | 75,984.5 | 31,329.6 | 15,132.9 | 2,532.9 | 648.0 | 49,643.4 | 1,485.7 | 2,825.6 | -6,332.5 | -2,021.2 | 153,663.5 | 63,525.2 | 9,238.5 | 72,763.7 | 70,639.8 | 11,331.5 | 81,971.3 | 1,610.3 | 146,066.2 |
| 2016 | 27,313.3 | 3,719.5 | 31,032.9 | 2,662.5 | 71,124.1 | 6,936.8 | 80,723.4 | 34,784.0 | 15,116.2 | 2,397.1 | 688.5 | 52,985.8 | 69.4 | -2,037.2 | -4,911.4 | -6,879.2 | 157,862.9 | 80,370.5 | 9,279.7 | 89,650.3 | 64,282.2 | 11,109.0 | 75,391.2 | -1,557.9 | 170,564.0 |
| 2017 | 29,328.3 | 3,861.8 | 33,190.1 | 2,864.8 | 78,816.4 | 7,077.9 | 88,759.1 | 37,777.4 | 11,945.4 | 1,988.2 | 722.4 | 52,433.4 | 1,312.5 | -117.3 | -3,862.0 | -2,666.7 | 171,715.9 | 61,707.8 | 9,739.1 | 71,446.9 | 53,296.3 | 11,418.3 | 64,714.6 | 1,654.5 | 180,102.6 |
| 2018 | 30,423.7 | 4,229.6 | 34,653.3 | 3,036.7 | 83,697.0 | 7,368.7 | 94,102.4 | 41,366.3 | 13,022.0 | 2,399.6 | 761.7 | 57,549.6 | -1,279.2 | 468.1 | -709.0 | -1,520.1 | 184,785.2 | 67,223.1 | 9,565.9 | 76,789.0 | 62,262.0 | 12,304.2 | 74,566.2 | 3,357.3 | 190,365.3 |
| 2019 | 31,830.0 | 4,523.8 | 36,353.9 | 3,207.4 | 90,287.6 | 7,600.8 | 101,095.8 | 44,219.1 | 14,423.1 | 2,788.1 | 785.6 | 62,215.9 | -2,084.5 | 915.5 | 4,353.0 | 3,184.0 | 202,849.6 | 56,317.8 | 9,940.1 | 66,257.9 | 67,969.4 | 11,969.8 | 79,939.2 | 9,196.1 | 197,268.8 |
| 2004Q1 | 1,845.5 | 354.9 | 2,200.4 | 181.5 | 3,317.9 | 466.8 | 3,966.2 | 1,640.7 | 785.6 | 286.9 | 51.0 | 2,764.2 | 21.3 | 418.6 | 359.0 | 798.8 | 9,729.7 | 4,182.0 | 1,046.3 | 5,228.3 | 2,846.0 | 1,095.1 | 3,941.1 | -763.6 | 10,253.3 |
| Q2 | 1,753.4 | 316.7 | 2,070.1 | 192.8 | 3,394.3 | 433.5 | 4,020.6 | 1,686.8 | 957.3 | 243.1 | 52.4 | 2,939.6 | 39.0 | -1,196.3 | 349.9 | -807.4 | 8,222.9 | 3,625.7 | 595.8 | 4,221.5 | 3,411.2 | 886.8 | 4,298.0 | 926.8 | 9,073.2 |
| Q3 | 1,883.2 | 314.1 | 2,197.3 | 204.7 | 3,369.4 | 647.1 | 4,221.2 | 1,780.3 | 866.1 | 259.1 | 55.0 | 2,960.5 | 16.9 | 1,547.6 | 116.8 | 1,681.3 | 11,060.4 | 4,946.5 | 677.0 | 5,623.5 | 3,481.0 | 1,051.5 | 4,532.5 | -674.6 | 11,476.8 |
| Q4 | 1,829.1 | 334.2 | 2,163.3 | 217.4 | 3,714.3 | 585.0 | 4,516.7 | 1,829.9 | 922.6 | 230.8 | 56.0 | 3,039.3 | 10.7 | 1,216.6 | 104.6 | 1,331.8 | 11,051.2 | 4,590.4 | 1,192.2 | 5,782.6 | 3,737.4 | 887.3 | 4,624.7 | -975.6 | 11,233.4 |
| 2005Q1 | 2,298.6 | 406.0 | 2,704.6 | 230.9 | 3,992.9 | 458.6 | 4,682.4 | 1,879.0 | 899.1 | 357.2 | 53.4 | 3,188.8 | 12.2 | -592.4 | 218.5 | -361.6 | 10,214.2 | 5,538.7 | 1,168.1 | 6,706.8 | 3,363.9 | 1,239.0 | 4,602.9 | 25.0 | 12,343.1 |
| Q2 | 1,802.4 | 318.2 | 2,120.6 | 245.2 | 3,694.1 | 571.8 | 4,511.1 | 1,931.6 | 830.2 | 185.4 | 50.9 | 2,998.2 | 15.7 | -146.0 | 184.2 | 53.9 | 9,683.7 | 4,871.5 | 536.7 | 5,408.2 | 3,251.0 | 994.0 | 4,245.0 | 279.7 | 11,126.7 |
| Q3 | 1,973.4 | 353.2 | 2,326.6 | 260.4 | 4,085.9 | 603.9 | 4,950.1 | 2,083.3 | 935.0 | 207.4 | 68.0 | 3,293.7 | 30.7 | 619.1 | 189.2 | 839.0 | 11,409.4 | 7,020.6 | 961.4 | 7,982.0 | 3,289.8 | 1,034.3 | 4,324.2 | -879.6 | 14,187.7 |
| Q4 | 2,287.2 | 407.3 | 2,694.5 | 276.5 | 4,323.5 | 596.3 | 5,196.4 | 2,141.7 | 960.5 | 200.3 | 77.3 | 3,379.8 | 15.5 | 152.2 | 237.2 | 405.0 | 11,675.6 | 5,277.5 | 1,485.3 | 6,762.8 | 3,824.5 | 1,062.0 | 4,886.4 | -457.3 | 13,094.7 |
| 2006Q1 | 1,970.0 | 374.1 | 2,344.2 | 293.7 | 4,531.2 | 412.8 | 5,237.6 | 2,394.5 | 828.8 | 270.9 | 66.6 | 3,560.8 | 31.6 | 257.4 | 199.0 | 488.0 | 11,630.6 | 6,028.7 | 1,269.1 | 7,297.8 | 3,158.9 | 1,298.3 | 4,457.2 | -469.2 | 14,002.0 |
| Q2 | 1,963.6 | 375.1 | 2,338.8 | 299.0 | 4,323.7 | 703.5 | 5,326.1 | 2,461.6 | 964.0 | 262.0 | 65.6 | 3,753.2 | 25.8 | -1,081.5 | 185.3 | -870.3 | 10,547.8 | 6,090.1 | 649.3 | 6,739.4 | 3,925.3 | 1,080.4 | 5,005.8 | 928.4 | 13,209.9 |
| Q3 | 2,202.5 | 402.2 | 2,604.8 | 316.9 | 5,246.7 | 630.4 | 6,194.0 | 2,569.3 | 1,106.0 | 293.0 | 84.6 | 4,052.9 | 59.3 | 1,623.9 | 248.6 | 1,931.8 | 14,783.5 | 6,214.5 | 924.3 | 7,138.8 | 4,023.7 | 1,345.3 | 5,369.0 | -337.5 | 16,215.7 |
| Q4 | 2,366.2 | 416.6 | 2,782.9 | 307.4 | 5,121.3 | 706.2 | 6,134.9 | 2,505.4 | 1,196.8 | 333.9 | 83.7 | 4,119.7 | 44.0 | -408.6 | 195.3 | -169.3 | 12,868.1 | 8,052.8 | 1,657.2 | 9,710.0 | 4,175.9 | 1,135.8 | 5,311.7 | -1,587.1 | 15,679.3 |
| 2007 Q1 | 2,494.9 | 435.4 | 2,930.4 | 304.3 | 4,680.0 | 733.3 | 5,717.7 | 2,661.9 | 1,074.2 | 380.3 | 82.5 | 4,198.8 | 49.9 | -474.7 | 185.3 | -239.5 | 12,607.4 | 8,956.0 | 1,397.0 | 10,353.0 | 4,192.0 | 1,697.0 | 5,889.0 | -1,337.5 | 15,733.9 |
| Q2 | 2,367.2 | 437.2 | 2,804.4 | 312.7 | 5,186.7 | 728.0 | 6,227.4 | 2,769.6 | 1,285.8 | 488.6 | 84.9 | 4,628.8 | 69.9 | -360.6 | 189.6 | -101.1 | 13,559.6 | 7,693.0 | 649.0 | 8,342.0 | 5,160.0 | 1,197.0 | 6,357.0 | 229.8 | 15,774.4 |
| Q3 | 2,549.9 | 475.9 | 3,025.9 | 359.6 | 5,997.3 | 731.7 | 7,088.6 | 2,939.9 | 1,644.1 | 492.0 | 95.6 | 5,171.7 | 62.1 | 1,418.7 | 478.3 | 1,959.1 | 17,245.2 | 8,923.0 | 1,369.0 | 10,292.0 | 5,395.0 | 1,549.3 | 6,944.3 | -2,078.7 | 18,514.2 |
| Q4 | 2,577.2 | 477.6 | 3,054.7 | 358.5 | 6,356.5 | 873.5 | 7,588.6 | 3,049.8 | 1,510.9 | 407.1 | 94.3 | 5,062.1 | 36.0 | -1,359.1 | 503.8 | -819.2 | 14,886.1 | 6,120.0 | 1,502.0 | 7,622.0 | 6,481.0 | 1,585.0 | 8,066.0 | 2,688.0 | 17,130.1 |
| 2008 Q1 | 3,253.2 | 546.6 | 3,799.7 | 334.9 | 5,704.2 | 803.7 | 6,842.8 | 2,831.3 | 1,990.9 | 526.2 | 68.1 | 5,416.4 | 36.0 | 1,233.5 | 559.5 | 1,829.0 | 17,888.0 | 9,018.0 | 367.0 | 9,385.0 | 7,505.0 | 650.0 | 8,155.0 | -1,633.4 | 17,484.6 |
| Q2 | 3,087.6 | 558.5 | 3,646.0 | 379.8 | 6,463.1 | 966.4 | 7,809.3 | 2,913.9 | 1,956.4 | 621.5 | 56.1 | 5,547.9 | 43.0 | -277.0 | 521.0 | 287.1 | 17,290.4 | 8,259.0 | 357.0 | 8,616.0 | 8,835.0 | 676.0 | 9,511.0 | 891.6 | 17,286.9 |
| Q3 | 3,088.1 | 559.3 | 3,647.4 | 209.7 | 8,073.8 | 975.2 | 9,258.7 | 3,174.0 | 1,884.8 | 590.7 | 64.4 | 5,713.9 | 49.3 | 323.1 | 402.7 | 775.1 | 19,395.1 | 10,776.0 | 265.0 | 11,041.0 | 9,677.0 | 651.0 | 10,328.0 | 40.8 | 20,148.9 |
| Q4 | 3,507.2 | 606.2 | 4,113.5 | 222.7 | 7,725.8 | 1,069.8 | 9,018.3 | 3,133.7 | 2,290.0 | 692.0 | 57.6 | 6,173.4 | 55.7 | 4,905.5 | 439.3 | 5,400.5 | 24,705.7 | 4,704.0 | 382.0 | 5,086.0 | 9,313.0 | 832.0 | 10,145.0 | 153.8 | 19,800.4 |
| 2009 Q1 | 3,235.4 | 620.2 | 3,855.6 | 307.8 | 7,103.8 | 904.6 | 8,316.1 | 3,311.1 | 1,865.6 | 802.8 | 62.4 | 6,041.9 | 51.4 | -3,994.9 | 679.4 | -3,264.1 | 14,949.4 | 3,886.0 | 317.6 | 4,203.6 | 7,736.0 | 1,096.0 | 8,832.0 | 6,274.9 | 16,596.0 |
| Q2 | 3,443.0 | 653.7 | 4,096.7 | 296.0 | 6,924.3 | 1,162.2 | 8,382.4 | 3,723.9 | 2,106.8 | 568.1 | 79.2 | 6,478.1 | 46.4 | -84.3 | 444.6 | 406.7 | 19,363.9 | 6,590.0 | 633.0 | 7,223.0 | 8,001.0 | 1,295.0 | 9,296.0 | 1,440.6 | 18,731.5 |
| Q3 | 3,033.0 | 608.5 | 3,641.5 | 310.4 | 9,134.0 | 933.3 | 10,377.7 | 4,025.5 | 1,930.9 | 495.8 | 90.9 | 6,543.1 | 44.0 | -1,583.9 | 409.0 | -1,130.9 | 19,431.4 | 6,825.0 | 359.0 | 7,184.0 | 8,422.0 | 1,050.0 | 9,472.0 | 1,328.5 | 18,471.9 |
| Q4 | 3,259. | | | | | | | | | | | | | | | | | | | | | | | | |

Table 5 Continued: Gross Domestic Product by Type of Expenditure at Current Prices (P million)

| Calendar year | Government Final Consumption | | | Non-Profit Institutions | Household Final Consumption | | | Gross Fixed Capital Formation | | | | | Change in Inventories | | | | Gross Domestic Expenditure | Exports | | | Imports | | | Errors & Omissions | Total GDP |
|----------------|------------------------------|------------|----------------|-------------------------|-----------------------------|---------------------------------|-----------------|-------------------------------|-----------------------|---------------------|---------------------|-----------------|-----------------------|----------|----------|-----------------|----------------------------|----------|----------|-----------------|----------|----------|-----------------|--------------------|-----------------|
| | Central Govt | Local Govt | Total | | Household Consumption (Mkt) | Household Consumption (Non-Mkt) | Total | Construction | Machinery & Equipment | Transport Equipment | Mineral Prospecting | Total | Livestock | Minerals | Others | Total | | Goods | Services | Total | Goods | Services | Total | | |
| 2012 Q1 | 4,371.3 | 707.4 | 5,078.8 | 479.9 | 9,325.5 | 1,116.2 | 10,921.7 | 5,712.3 | 3,053.4 | 836.4 | 118.8 | 9,720.9 | 45.4 | -557.0 | 637.8 | 126.3 | 25,847.7 | 9,783.0 | 1,975.0 | 11,758.0 | 12,823.0 | 1,521.0 | 14,344.0 | 2,782.4 | 26,044.1 |
| Q2 | 4,931.2 | 711.3 | 5,642.5 | 489.3 | 13,148.6 | 1,048.1 | 14,686.0 | 5,372.4 | 3,251.4 | 961.2 | 93.9 | 9,678.8 | 50.2 | -30.5 | 578.1 | 597.8 | 30,605.2 | 10,414.0 | 2,014.0 | 12,428.0 | 12,903.0 | 1,648.0 | 14,551.0 | -756.1 | 27,726.0 |
| Q3 | 4,470.0 | 710.5 | 5,180.5 | 519.9 | 13,589.5 | 1,002.9 | 15,112.3 | 5,906.6 | 3,146.8 | 832.8 | 119.7 | 10,005.9 | 60.9 | 160.2 | 641.4 | 862.5 | 31,161.2 | 13,556.0 | 1,961.0 | 15,517.0 | 19,499.0 | 1,925.0 | 21,424.0 | 2,287.6 | 27,541.9 |
| Q4 | 4,570.3 | 723.5 | 5,293.8 | 506.1 | 14,725.9 | 1,148.3 | 16,380.3 | 6,317.7 | 3,150.3 | 806.8 | 123.1 | 10,397.8 | 31.1 | -182.9 | 603.4 | 451.6 | 32,523.6 | 12,133.0 | 2,276.0 | 14,409.0 | 15,849.0 | 1,297.0 | 17,146.0 | -1,228.1 | 28,558.5 |
| 2013 Q1 | 4,838.5 | 750.8 | 5,589.3 | 518.3 | 13,874.7 | 1,218.7 | 15,611.7 | 6,497.2 | 2,509.3 | 586.0 | 140.5 | 9,733.1 | -139.3 | -4,500.8 | 718.1 | -3,922.0 | 27,012.0 | 16,867.8 | 2,151.0 | 19,018.8 | 15,728.2 | 1,834.2 | 17,562.4 | -43.6 | 28,424.8 |
| Q2 | 4,954.6 | 775.4 | 5,730.0 | 535.7 | 13,617.2 | 1,541.2 | 15,694.0 | 6,637.0 | 3,293.9 | 716.9 | 142.1 | 10,789.9 | -69.1 | -304.8 | 1,374.8 | 1,000.9 | 33,214.7 | 14,739.4 | 2,675.0 | 17,414.4 | 17,067.0 | 2,010.0 | 19,077.0 | 908.8 | 32,461.0 |
| Q3 | 5,071.0 | 807.3 | 5,878.3 | 545.5 | 14,503.8 | 1,330.7 | 16,379.9 | 6,650.2 | 3,176.6 | 480.2 | 143.5 | 10,450.4 | -30.3 | -197.2 | -2,420.8 | -2,648.3 | 30,060.3 | 19,550.4 | 2,792.0 | 22,342.4 | 17,130.8 | 1,996.3 | 19,127.2 | -1,610.1 | 31,665.4 |
| Q4 | 5,141.4 | 875.8 | 6,017.2 | 555.5 | 15,516.5 | 1,351.9 | 17,423.9 | 6,845.6 | 3,336.2 | 625.0 | 144.9 | 10,951.8 | -22.9 | 250.5 | 224.6 | 452.2 | 34,845.1 | 15,406.1 | 2,819.0 | 18,225.1 | 18,976.1 | 1,642.6 | 20,618.8 | 155.7 | 32,607.2 |
| 2014 Q1 | 6,001.1 | 891.3 | 6,892.4 | 565.3 | 14,172.0 | 1,363.5 | 16,100.8 | 6,994.6 | 3,189.6 | 626.6 | 149.2 | 10,960.1 | -46.8 | -120.9 | 70.0 | -97.6 | 33,855.6 | 17,273.7 | 2,121.8 | 19,395.5 | 17,513.1 | 2,763.4 | 20,276.5 | 1,539.8 | 34,514.5 |
| Q2 | 6,406.1 | 929.8 | 7,335.9 | 573.2 | 14,364.8 | 1,488.1 | 16,426.1 | 7,220.8 | 2,977.9 | 720.1 | 151.8 | 11,070.7 | -21.2 | -295.5 | -498.4 | -815.1 | 34,017.7 | 21,037.3 | 2,085.9 | 23,123.2 | 17,907.1 | 2,650.7 | 20,557.7 | 1,142.8 | 37,725.9 |
| Q3 | 6,495.9 | 956.7 | 7,452.5 | 580.8 | 15,515.3 | 1,524.7 | 17,620.8 | 7,250.6 | 2,392.8 | 686.7 | 153.6 | 10,483.7 | 54.1 | 189.0 | -1,609.3 | -1,366.2 | 34,190.7 | 19,808.3 | 2,273.8 | 22,082.2 | 17,245.3 | 2,654.0 | 19,899.2 | -218.0 | 36,155.7 |
| Q4 | 6,440.7 | 956.2 | 7,396.9 | 589.0 | 16,227.4 | 1,510.6 | 18,327.0 | 7,309.8 | 3,786.1 | 663.7 | 158.6 | 11,918.2 | 179.0 | -189.8 | -1,009.3 | -1,020.1 | 36,622.0 | 18,328.2 | 2,355.6 | 20,683.7 | 17,129.2 | 2,974.7 | 20,103.9 | 270.7 | 37,472.5 |
| 2015 Q1 | 6,335.9 | 981.8 | 7,317.7 | 596.6 | 15,729.4 | 1,540.9 | 17,866.8 | 7,547.4 | 3,267.7 | 578.3 | 163.6 | 11,557.0 | 353.4 | 89.3 | -1,392.8 | -950.1 | 35,791.5 | 19,496.6 | 1,930.8 | 21,427.4 | 17,666.8 | 2,860.3 | 20,527.1 | -129.1 | 36,562.8 |
| Q2 | 6,528.0 | 1,022.8 | 7,550.8 | 606.9 | 16,651.3 | 1,580.6 | 18,838.8 | 7,847.5 | 3,884.8 | 638.1 | 154.9 | 12,525.2 | 430.4 | 207.8 | -2,400.0 | -1,761.8 | 37,153.0 | 19,807.9 | 2,396.3 | 22,204.2 | 19,117.4 | 2,824.2 | 21,941.6 | -72.3 | 37,343.2 |
| Q3 | 6,498.7 | 1,021.2 | 7,519.9 | 620.8 | 16,909.7 | 1,586.3 | 19,116.8 | 7,889.4 | 4,155.2 | 637.6 | 161.3 | 12,843.5 | 409.9 | 782.1 | 460.3 | 1,652.3 | 41,132.5 | 11,843.1 | 2,512.2 | 14,355.3 | 17,452.7 | 2,572.1 | 20,024.8 | 1,832.9 | 37,296.0 |
| Q4 | 6,671.4 | 996.8 | 7,668.2 | 635.8 | 17,896.9 | 1,629.5 | 20,162.1 | 8,045.3 | 3,825.2 | 679.0 | 168.2 | 12,717.6 | 291.9 | 1,746.4 | -3,000.0 | -961.7 | 39,586.4 | 12,377.6 | 2,399.2 | 14,776.8 | 16,402.9 | 3,074.9 | 19,477.8 | -21.3 | 34,864.1 |
| 2016 Q1 | 6,790.1 | 977.4 | 7,767.5 | 646.1 | 16,819.1 | 1,722.6 | 19,187.8 | 8,315.7 | 3,201.5 | 503.6 | 173.4 | 12,194.2 | 76.5 | -715.9 | -1,600.0 | -2,239.4 | 36,910.1 | 19,894.5 | 2,520.5 | 22,415.1 | 15,793.3 | 2,216.5 | 18,009.8 | -1,672.8 | 39,642.6 |
| Q2 | 7,005.5 | 932.0 | 7,937.5 | 657.6 | 17,057.2 | 1,760.0 | 19,474.8 | 8,598.4 | 3,884.7 | 598.5 | 165.7 | 13,247.3 | -33.4 | -178.2 | -2,100.0 | -2,311.6 | 38,348.1 | 25,397.5 | 2,202.7 | 27,600.1 | 16,529.3 | 4,765.1 | 21,294.4 | -1,973.2 | 42,680.6 |
| Q3 | 6,697.0 | 909.3 | 7,606.4 | 671.5 | 18,313.4 | 1,781.9 | 20,766.8 | 8,899.4 | 3,850.1 | 725.8 | 171.2 | 13,646.5 | -37.6 | -1,189.3 | -1,114.3 | -2,341.2 | 39,678.4 | 18,919.0 | 1,829.5 | 20,748.5 | 15,373.8 | 1,907.3 | 17,281.1 | 1,251.5 | 44,397.3 |
| Q4 | 6,820.7 | 900.8 | 7,721.5 | 687.2 | 18,934.4 | 1,672.4 | 21,294.0 | 8,970.6 | 4,179.8 | 569.3 | 178.2 | 13,897.8 | 63.8 | 46.2 | -97.0 | 13.0 | 42,926.3 | 16,159.6 | 2,727.0 | 18,886.6 | 16,585.9 | 2,220.0 | 18,805.8 | 836.5 | 43,843.6 |
| 2017 Q1 | 6,992.1 | 924.9 | 7,917.0 | 695.1 | 19,900.7 | 1,689.1 | 22,284.8 | 8,979.5 | 2,968.1 | 431.6 | 182.0 | 12,561.1 | 273.6 | -158.0 | -2,800.0 | -2,684.4 | 40,078.5 | 17,991.9 | 2,169.6 | 20,161.5 | 12,350.3 | 2,191.9 | 14,542.2 | -2,039.7 | 43,658.1 |
| Q2 | 7,453.3 | 976.2 | 8,429.5 | 710.6 | 19,423.9 | 1,759.2 | 21,893.7 | 9,248.9 | 2,441.7 | 420.6 | 174.7 | 12,286.0 | 406.7 | 327.9 | -512.0 | 222.5 | 42,831.7 | 14,940.9 | 2,452.2 | 17,393.1 | 12,109.8 | 3,023.8 | 15,133.6 | -764.6 | 44,326.6 |
| Q3 | 7,322.6 | 974.2 | 8,296.8 | 725.9 | 19,662.3 | 1,817.2 | 22,205.3 | 9,711.4 | 3,072.4 | 548.8 | 179.7 | 13,512.3 | 392.9 | -363.9 | -100.0 | -71.1 | 43,943.3 | 13,218.6 | 2,700.4 | 15,919.0 | 13,065.4 | 3,406.5 | 16,471.9 | 2,485.9 | 45,876.4 |
| Q4 | 7,560.3 | 986.5 | 8,546.8 | 733.2 | 19,829.6 | 1,812.5 | 22,375.3 | 9,837.6 | 3,463.2 | 587.2 | 186.0 | 14,074.0 | 239.4 | 76.8 | -450.0 | -133.8 | 44,862.3 | 15,556.3 | 2,416.9 | 17,973.2 | 15,770.7 | 2,796.1 | 18,566.9 | 1,972.9 | 46,241.5 |
| 2018 Q1 | 7,502.0 | 990.7 | 8,492.7 | 740.7 | 20,311.8 | 1,813.9 | 22,866.5 | 9,877.0 | 3,305.7 | 583.2 | 191.1 | 13,957.0 | -54.7 | 28.1 | 550.0 | 523.4 | 45,839.5 | 13,808.1 | 1,965.1 | 15,773.1 | 14,250.9 | 2,655.7 | 16,906.6 | 1,194.6 | 45,900.7 |
| Q2 | 7,628.0 | 1,014.2 | 8,642.1 | 750.4 | 20,243.5 | 1,857.0 | 22,850.8 | 10,222.7 | 3,086.7 | 576.3 | 186.2 | 14,071.8 | -280.1 | 855.2 | -3,517.0 | -2,941.9 | 42,622.9 | 18,882.5 | 2,421.2 | 21,303.7 | 14,649.8 | 3,295.8 | 17,945.6 | 1,025.9 | 47,006.9 |
| Q3 | 7,741.1 | 1,096.9 | 8,838.0 | 766.7 | 21,014.4 | 1,885.1 | 23,666.2 | 10,580.4 | 3,181.7 | 595.9 | 188.5 | 14,546.5 | -434.3 | -632.6 | 1,539.0 | 472.1 | 47,522.8 | 14,850.3 | 2,918.9 | 17,769.2 | 14,377.4 | 3,546.5 | 17,923.9 | 1,466.9 | 48,835.1 |
| Q4 | 7,552.7 | 1,127.8 | 8,680.5 | 778.9 | 22,127.3 | 1,812.7 | 24,718.9 | 10,686.2 | 3,447.9 | 644.2 | 195.9 | 14,974.3 | -510.1 | 217.4 | 719.0 | 426.3 | 48,800.0 | 19,682.2 | 2,260.8 | 21,943.0 | 18,984.1 | 2,806.2 | 21,790.2 | -330.2 | 48,622.6 |
| 2019 Q1 | 7,575.7 | 1,090.3 | 8,666.0 | 786.7 | 22,194.2 | 1,848.2 | 24,829.1 | 10,729.0 | 3,253.8 | 732.2 | 200.6 | 14,915.6 | -514.5 | -64.3 | -156.0 | -734.8 | 47,675.9 | 14,684.5 | 2,673.3 | 17,357.8 | 16,143.4 | 2,517.9 | 18,661.3 | 2,641.6 | 49,014.1 |
| Q2 | 8,010.5 | 1,106.5 | 9,117.0 | 796.5 | 22,271.8 | 1,905.9 | 24,974.2 | 10,943.6 | 3,598.9 | 729.8 | 191.9 | 15,464.2 | -518.9 | 22.1 | -480.0 | -976.8 | 48,578.6 | 17,511.0 | 3,072.8 | 20,583.8 | 17,051.9 | 3,361.6 | 20,413.5 | 428.1 | 49,177.0 |
| Q3 | 8,115.8 | 1,162.3 | 9,278.0 | 807.0 | 22,624.5 | 1,955.9 | 25,387.4 | 11,217.2 | 3,850.7 | 545.8 | 193.3 | 15,807.0 | -523.3 | -238.5 | 3,500.0 | 2,738.2 | 53,210.6 | 10,836.9 | 2,047.0 | 12,883.9 | 16,301.8 | 2,939.7 | 19,241.5 | 3,474.0 | 49,588.8 |
| Q4 | 8,128.1 | 1,164.8 | 9,292.9 | 817.2 | 23,197.2 | 1,890.8 | 25,905.2 | 11,329.3 | 3,719.7 | 780.2 | 199.9 | 16,029.1 | -527.7 | 1,196.1 | 1,489.0 | 2,157.4 | 53,384.5 | 13,285.4 | 2,146.9 | 15,432.3 | 18,472.2 | 3,150.7 | 21,622.9 | 2,652.4 | 49,488.9 |

Note: 2016-2019 estimates are provisional


Table 6: Gross Domestic Product by Type of Expenditure at Constant Prices (P million)

| Calendar year | Government Final Consumption | | | Non-Profit Institutions | Household Final Consumption | | | Gross Fixed Capital Formation | | | | | Change in Inventories | | | | Gross Domestic Expenditure | Exports | | | Imports | | | Errors & Omissions | Total GDP |
|---------------|------------------------------|------------|----------|-------------------------|-----------------------------|---------------------------------|----------|-------------------------------|-----------------------|---------------------|---------------------|----------|-----------------------|----------|----------|----------|----------------------------|----------|----------|----------|----------|----------|----------|--------------------|-----------|
| | Central Govt | Local Govt | Total | | Household Consumption (Mkt) | Household Consumption (Non-Mkt) | Total | Construction | Machinery & Equipment | Transport Equipment | Mineral Prospecting | Total | Livestock | Minerals | Others | Total | | Goods | Services | Total | Goods | Services | Total | | |
| | | | | | | | | | | | | | | | | | | | | | | | | | |
| 2004 | 9,695.9 | 1,499.1 | 11,195.0 | 837.6 | 14,545.3 | 2,242.9 | 17,625.7 | 8,757.6 | 4,167.6 | 1,064.3 | 225.5 | 14,215.1 | 75.9 | 2,294.8 | 978.4 | 3,349.1 | 46,385.0 | 21,072.7 | 4,265.8 | 25,338.5 | 16,328.3 | 4,851.9 | 21,180.2 | 1,624.5 | 52,167.7 |
| 2005 | 8,918.5 | 1,568.8 | 10,487.3 | 1,022.1 | 16,252.3 | 2,250.6 | 19,525.0 | 9,190.2 | 4,062.8 | 974.9 | 251.9 | 14,479.8 | 80.7 | -1,096.2 | 1,236.7 | 221.2 | 44,713.3 | 25,319.2 | 4,628.6 | 29,947.8 | 15,303.7 | 4,831.1 | 20,134.8 | 18.5 | 54,544.8 |
| 2006 | 8,502.4 | 1,568.1 | 10,070.5 | 1,217.0 | 19,222.9 | 2,452.8 | 22,892.7 | 9,930.8 | 4,095.6 | 1,159.7 | 300.5 | 15,486.5 | 160.7 | 391.2 | 828.2 | 1,380.1 | 49,829.9 | 26,386.1 | 4,499.9 | 30,886.0 | 15,283.9 | 4,859.8 | 20,143.7 | -1,465.3 | 59,106.9 |
| 2007 | 8,798.4 | 1,626.7 | 10,425.1 | 1,326.2 | 21,952.7 | 3,046.3 | 26,325.1 | 10,268.9 | 4,901.3 | 1,718.7 | 354.9 | 17,243.8 | 125.3 | -710.1 | 1,347.9 | 763.1 | 54,757.2 | 28,663.8 | 4,841.7 | 33,505.6 | 19,411.8 | 5,758.8 | 25,170.6 | 907.0 | 63,999.1 |
| 2008 | 9,193.5 | 1,751.4 | 10,944.9 | 1,082.0 | 26,187.9 | 3,598.5 | 30,868.4 | 9,213.3 | 6,121.7 | 2,251.6 | 232.2 | 17,818.8 | 157.2 | 3,133.0 | 1,813.5 | 5,103.7 | 64,735.8 | 27,555.5 | 5,119.2 | 32,674.7 | 24,666.2 | 4,920.2 | 29,586.5 | 172.0 | 67,996.1 |
| 2009 | 9,520.5 | 1,748.7 | 11,269.2 | 1,076.4 | 28,024.6 | 3,475.3 | 32,576.3 | 10,779.1 | 6,103.4 | 2,349.7 | 277.7 | 19,509.9 | 209.3 | -3,505.9 | 1,561.0 | -1,735.6 | 61,619.8 | 18,677.1 | 1,688.9 | 20,365.9 | 21,737.6 | 4,628.8 | 26,366.4 | 7,173.4 | 62,792.8 |
| 2010 | 9,945.7 | 1,744.3 | 11,690.0 | 1,110.1 | 30,813.3 | 3,460.7 | 35,384.1 | 11,711.9 | 7,089.7 | 2,205.0 | 293.7 | 21,300.2 | 163.4 | -226.9 | 1,753.9 | 1,690.5 | 70,064.8 | 22,264.8 | 1,364.5 | 23,629.3 | 23,305.3 | 4,769.8 | 28,075.1 | 2,551.1 | 68,170.1 |
| 2011 | 10,442.4 | 1,830.7 | 12,273.1 | 1,166.9 | 33,491.6 | 3,512.7 | 38,171.2 | 13,136.3 | 7,931.9 | 2,496.9 | 323.6 | 23,888.6 | 236.2 | -530.5 | 1,594.4 | 1,300.2 | 75,633.1 | 28,696.4 | 1,441.9 | 30,138.2 | 27,882.9 | 5,589.6 | 33,472.5 | -5.6 | 72,293.3 |
| 2012 | 12,229.8 | 1,912.5 | 14,142.3 | 1,127.5 | 33,673.4 | 2,853.2 | 37,654.1 | 14,140.5 | 9,782.2 | 2,908.3 | 310.1 | 27,141.0 | 217.5 | 1,010.9 | 1,615.9 | 2,844.2 | 81,781.7 | 30,069.2 | 5,445.9 | 35,515.1 | 40,012.4 | 4,197.3 | 44,209.7 | 2,427.7 | 75,514.8 |
| 2013 | 14,059.4 | 2,117.9 | 16,177.3 | 989.8 | 37,035.6 | 3,430.1 | 41,455.5 | 15,747.1 | 9,491.1 | 2,063.6 | 387.2 | 27,689.0 | -106.5 | -2,742.7 | 1,355.6 | -1,493.7 | 83,828.1 | 42,371.0 | 6,569.7 | 48,940.7 | 43,735.9 | 4,901.0 | 48,636.8 | -51.3 | 84,080.7 |
| 2014 | 15,751.2 | 2,171.4 | 17,922.7 | 1,029.1 | 37,260.6 | 3,518.0 | 41,807.7 | 16,364.1 | 9,145.1 | 2,193.5 | 393.7 | 28,096.4 | -77.6 | -569.8 | -1,753.9 | -2,401.3 | 85,425.5 | 45,490.6 | 5,279.7 | 50,770.3 | 42,723.9 | 7,616.9 | 50,340.8 | 1,714.4 | 87,569.5 |
| 2015 | 16,095.2 | 2,275.0 | 18,370.2 | 1,061.8 | 38,840.3 | 3,581.9 | 43,484.0 | 16,920.6 | 11,178.0 | 2,059.7 | 398.1 | 30,556.4 | 484.7 | 2,621.4 | -2,116.7 | 989.4 | 93,400.0 | 36,269.7 | 5,215.8 | 41,485.4 | 43,627.2 | 8,134.8 | 51,762.1 | 2,959.2 | 86,082.6 |
| 2016 | 16,363.5 | 2,428.7 | 18,792.2 | 1,095.2 | 39,686.5 | 3,676.7 | 44,458.4 | 17,626.2 | 11,661.6 | 1,971.7 | 410.2 | 31,669.7 | -10.5 | -2,460.8 | 655.7 | -1,815.5 | 93,104.7 | 42,010.9 | 4,900.8 | 46,911.7 | 40,392.6 | 8,588.8 | 48,981.4 | -1,247.6 | 89,787.4 |
| 2017 | 16,572.1 | 2,510.0 | 19,082.1 | 1,128.8 | 42,636.4 | 3,604.6 | 47,369.9 | 18,332.4 | 8,608.9 | 1,515.7 | 417.0 | 28,873.9 | 492.7 | 71.3 | -3,340.0 | -2,775.9 | 92,550.0 | 34,350.0 | 4,958.4 | 39,308.4 | 30,277.0 | 8,379.6 | 38,656.6 | -806.9 | 92,394.8 |
| 2018 | 17,210.7 | 2,573.1 | 19,783.8 | 1,170.9 | 44,462.4 | 3,667.3 | 49,300.6 | 18,979.6 | 10,008.5 | 1,802.7 | 428.8 | 31,219.6 | -505.5 | 211.8 | -2,672.0 | -2,965.7 | 97,338.4 | 37,379.0 | 4,761.3 | 42,140.3 | 34,126.7 | 9,107.0 | 43,233.7 | 288.0 | 96,533.0 |
| 2019 | 17,815.4 | 2,610.0 | 20,425.4 | 1,207.4 | 46,106.3 | 3,699.1 | 51,012.8 | 19,726.8 | 10,987.0 | 2,082.0 | 435.2 | 33,230.9 | -817.0 | 398.4 | 2,473.0 | 2,054.4 | 106,723.5 | 30,298.7 | 4,838.0 | 35,136.8 | 36,935.2 | 9,178.4 | 46,113.7 | 3,649.7 | 99,396.3 |
| 2004Q1 | 2,469.8 | 420.1 | 2,889.9 | 197.2 | 3,606.9 | 507.5 | 4,311.6 | 2,198.2 | 957.4 | 308.4 | 57.4 | 3,521.4 | 19.5 | -1,015.6 | 353.8 | -642.4 | 10,080.6 | 5,246.3 | 1,311.1 | 6,557.4 | 3,969.3 | 1,550.0 | 5,519.3 | 1,055.3 | 12,174.0 |
| Q2 | 2,282.8 | 356.3 | 2,639.2 | 203.1 | 3,584.2 | 457.1 | 4,244.4 | 2,204.1 | 1,131.4 | 253.5 | 55.9 | 3,644.8 | 32.9 | 1,785.1 | 361.8 | 2,179.8 | 12,708.1 | 4,411.1 | 724.1 | 5,135.2 | 3,890.3 | 1,018.4 | 4,908.7 | -581.5 | 12,353.1 |
| Q3 | 2,487.8 | 348.3 | 2,836.0 | 213.4 | 3,520.7 | 675.3 | 4,409.5 | 2,271.6 | 1,013.1 | 267.3 | 56.4 | 3,608.4 | 14.7 | -990.3 | 132.7 | -842.9 | 10,011.0 | 5,956.2 | 814.3 | 6,770.5 | 4,219.0 | 1,275.6 | 5,494.6 | 2,439.5 | 13,726.4 |
| Q4 | 2,455.5 | 374.4 | 2,829.9 | 223.9 | 3,833.4 | 602.9 | 4,660.2 | 2,083.7 | 1,065.8 | 235.2 | 55.8 | 3,440.5 | 8.9 | 2,515.6 | 130.1 | 2,654.6 | 13,585.2 | 5,459.1 | 1,416.3 | 6,875.4 | 4,249.7 | 1,007.9 | 5,257.6 | -1,288.9 | 13,914.2 |
| 2005Q1 | 2,637.3 | 455.2 | 3,092.5 | 245.7 | 4,241.5 | 488.6 | 4,975.8 | 2,240.6 | 1,061.0 | 382.2 | 59.4 | 3,743.3 | 13.9 | -3,159.3 | 291.6 | -2,853.9 | 8,957.7 | 6,506.6 | 1,376.9 | 7,883.4 | 3,850.1 | 1,411.9 | 5,262.0 | 1,260.4 | 12,839.5 |
| Q2 | 1,907.2 | 340.8 | 2,247.9 | 251.6 | 3,787.2 | 587.3 | 4,626.2 | 2,264.6 | 944.5 | 191.3 | 59.6 | 3,460.1 | 17.1 | 1,837.6 | 327.2 | 2,181.9 | 12,516.1 | 5,517.6 | 609.9 | 6,127.5 | 3,784.4 | 1,150.6 | 4,935.1 | -688.7 | 13,019.9 |
| Q3 | 2,105.1 | 363.0 | 2,468.1 | 257.9 | 4,047.0 | 598.6 | 4,903.5 | 2,318.4 | 1,027.5 | 206.7 | 68.7 | 3,621.3 | 33.3 | -1,946.1 | 291.3 | -1,621.6 | 9,371.4 | 7,673.6 | 1,054.4 | 8,728.0 | 3,857.9 | 1,217.0 | 5,074.8 | 1,160.3 | 14,184.8 |
| Q4 | 2,268.9 | 409.8 | 2,678.8 | 266.9 | 4,176.5 | 576.1 | 5,019.5 | 2,366.6 | 1,029.8 | 194.7 | 64.1 | 3,655.2 | 16.4 | 2,171.7 | 326.7 | 2,514.8 | 13,868.2 | 5,621.4 | 1,587.4 | 7,208.8 | 3,811.3 | 1,051.6 | 4,862.9 | -1,713.5 | 14,500.6 |
| 2006Q1 | 2,173.8 | 397.2 | 2,571.0 | 302.8 | 4,669.8 | 426.7 | 5,399.3 | 2,591.2 | 814.0 | 279.5 | 73.3 | 3,758.0 | 33.8 | 794.8 | 199.1 | 1,027.7 | 12,755.9 | 6,222.0 | 1,309.2 | 7,531.2 | 3,344.2 | 1,361.2 | 4,705.4 | -1,176.3 | 14,405.4 |
| Q2 | 2,013.9 | 385.2 | 2,399.1 | 300.2 | 4,344.4 | 708.4 | 5,353.0 | 2,566.2 | 922.3 | 263.3 | 70.6 | 3,822.4 | 26.4 | -196.4 | 203.9 | 34.0 | 11,608.5 | 6,123.0 | 652.5 | 6,775.5 | 3,713.0 | 1,018.9 | 4,731.9 | 720.2 | 14,372.3 |
| Q3 | 2,130.6 | 387.3 | 2,517.9 | 312.5 | 5,179.1 | 623.3 | 6,114.8 | 2,611.3 | 1,140.3 | 289.2 | 77.4 | 4,118.1 | 59.7 | 136.3 | 229.3 | 425.3 | 13,176.1 | 6,134.3 | 911.9 | 7,046.2 | 4,059.6 | 1,357.0 | 5,416.6 | 547.4 | 15,353.1 |
| Q4 | 2,184.1 | 398.4 | 2,582.5 | 301.5 | 5,029.6 | 694.5 | 6,025.6 | 2,162.1 | 1,219.0 | 327.7 | 79.2 | 3,788.0 | 40.7 | -343.4 | 195.9 | -106.8 | 12,289.3 | 7,906.8 | 1,626.4 | 9,533.2 | 4,167.1 | 1,122.7 | 5,289.8 | -1,556.6 | 14,976.1 |
| 2007 Q1 | 2,275.5 | 401.6 | 2,677.0 | 308.7 | 4,843.2 | 749.4 | 5,901.3 | 2,272.3 | 1,010.9 | 395.2 | 111.8 | 3,790.3 | 33.6 | -831.9 | 328.6 | -469.7 | 11,898.9 | 8,483.5 | 1,336.2 | 9,819.7 | 4,022.6 | 1,635.4 | 5,657.9 | -725.6 | 15,335.1 |
| Q2 | 2,061.3 | 390.9 | 2,452.2 | 308.8 | 5,232.4 | 724.4 | 6,265.6 | 2,507.7 | 1,246.2 | 494.4 | 72.9 | 4,321.2 | 40.5 | 1,407.2 | 352.7 | 1,800.4 | 14,839.4 | 6,696.6 | 604.2 | 7,300.8 | 4,727.3 | 1,154.7 | 5,882.0 | -170.3 | 16,088.0 |
| Q3 | 2,249.6 | 419.4 | 2,669.0 | 354.8 | 5,794.4 | 720.7 | 6,869.9 | 2,883.9 | 1,278.1 | 391.1 | 86.4 | 4,639.4 | 34.2 | -1,664.2 | 346.9 | -1,283.1 | 12,895.3 | 8,417.3 | 1,262.2 | 9,679.5 | 4,885.1 | 1,471.4 | 6,356.5 | 99.3 | 16,317.6 |
| Q4 | 2,212.0 | 414.9 | 2,626.9 | 353.8 | 6,082.7 | 851.7 | 7,288.3 | 2,605.0 | 1,366.1 | 438.0 | 83.7 | 4,492.9 | 17.0 | 378.8 | 319.6 | 715.4 | 15,123.6 | 5,066.4 | 1,639.1 | 6,705.5 | 5,776.9 | 1,497.4 | 7,274.3 | 1,703.6 | 16,258.4 |
| 2008 Q1 | 2,478.5 | 417.8 | 2,896.3 | 308.5 | 5,905.1 | 840.4 | 7,054.0 | 2,194.6 | 1,483.9 | 500.6 | 46.9 | 4,226.0 | 33.8 | 88.2 | 1,419.6 | 1,541.6 | 15,717.9 | 8,262.0 | 1,565.7 | 9,827.7 | 5,776.8 | 1,464.1 | 7,240.9 | -1,906.8 | 16,397.8 |
| Q2 | 2,076.3 | 418.9 | 2,495.2 | 250.7 | 6,098.8 | 916.9 | 7,266.4 | 2,385.1 | 1,528.2 | 577.6 | 59.0 | 4,549.8 | 34.8 | 1,265.6 | -214.0 | 1,086.4 | 15,397.8 | 6,932.1 | 1,074.4 | 8,006.5 | 6,272.6 | 1,133.1 | 7,405.7 | 1,066.8 | 17,065.3 |
| Q3 | 2,263.8 | 448.7 | 2,712.5 | 256.9 | 7,286.9 | 882.9 | 8,426.7 | 2,289.2 | 1,528.2 | 543.3 | 67.0 | 4,427.7 | 27.2 | -1,355.5 | 258.8 | -1,069.5 | 14,497.4 | 8,634.0 | 1,370.8 | 10,004.8 | 6,473.4 | 1,103.5 | 7,576.9 | 682.4 | 17,607.6 |
| Q4 | 2,375.1 | 465.9 | 2,841.0 | 265.9 | 6,897.0 | 958.3 | 8,121.3 | 2,344.4 | 1,581.5 | 630.1 | 59.4 | 4,615.4 | 61.4 | 3,134.7 | 349.0 | 3,545.2 | 19,122.8 | 3,727.4 | 1,108.4 | 4,835.8 | 6,143.4 | 1,219.6 | 7,363.0 | 329.6 | 16,925.3 |
| 2009 Q1 | 2,648.1 | 460.7 | 3,108.8 | 267.8 | 6,591.8 | 814.8 | 7,674.5 | 2,600.7 | 1,403.8 | 718.2 | 56.1 | 4,778.8 | 42.6 | -2,812.1 | 388.7 | -2,380.8 | 13,181.2 | 3,519.0 | 350.2 | 3,869.2 | 5,274.9 | 1,133.6 | 6,408.5 | 4,201.8 | 14,843.7 |
| Q2 | 2,231.3 | 420.5 | 2,651.8 | 265.6 | 6,033.6 | 1,037.4 | 7,336.6 | 2,890.8 | 1,617.7 | 503.2 | 70.5 | 5,082.2 | 51.8 | -705.9 | 393.6 | -260.5 | 14,810.2 | 5,021.7 | 504.7 | 5,526.3 | 5,409.2 | 1,252.9 | 6,662.2 | 2,137.2 | 15,811.5 |
| Q3 | 2,331.6 | 436.7 | 2,768.3 | 276.4 | 7,898.3 | 814.4 | 8,989.0 | 2,821.6 | 1,442.3 | 434.6 | 80.1 | 4,778.6 | 62.4 | -41.7 | 374.0 | 394.7 | 16,930.7 | 5,212.6 | 453.3 | 5,665.8 | 5,558.1 | 1,172.9 | 6,730.9 | -82.8 | 15,782.8 |
| Q4 | | | | | | | | | | | | | | | | | | | | | | | | | |

Table 6 Continued: Gross Domestic Product by Type of Expenditure at Constant Prices (P million)

| Calendar year | Government Final Consumption | | | Non-Profit Institutions | Household Final Consumption | | | Gross Fixed Capital Formation | | | | | Change in Inventories | | | | Gross Domestic Expenditure | Exports | | | Imports | | | Errors & Omissions | Total GDP |
|----------------|------------------------------|------------|----------------|-------------------------|-----------------------------|---------------------------------|-----------------|-------------------------------|-----------------------|---------------------|---------------------|----------------|-----------------------|----------|----------|-----------------|----------------------------|----------|----------|-----------------|----------|----------|-----------------|--------------------|-----------------|
| | Central Govt | Local Govt | Total | | Household Consumption (Mkt) | Household Consumption (Non-Mkt) | Total | Construction | Machinery & Equipment | Transport Equipment | Mineral Prospecting | Total | Livestock | Minerals | Others | Total | | Goods | Services | Total | Goods | Services | Total | | |
| 2012 Q1 | 2,904.7 | 443.3 | 3,348.0 | 303.2 | 6,879.5 | 753.1 | 7,935.9 | 3,597.6 | 2,187.9 | 719.0 | 80.5 | 6,585.0 | 60.1 | 377.0 | 430.4 | 867.4 | 18,736.3 | 6,601.2 | 1,332.7 | 7,933.9 | 8,652.5 | 1,026.3 | 9,678.8 | 1,694.2 | 18,685.5 |
| Q2 | 2,311.6 | 465.1 | 2,776.7 | 324.8 | 8,661.6 | 711.0 | 9,697.4 | 3,310.9 | 2,438.4 | 751.9 | 64.2 | 6,565.4 | 64.1 | -406.6 | 381.1 | 38.6 | 19,078.0 | 6,864.9 | 1,327.6 | 8,192.5 | 8,505.6 | 1,086.4 | 9,592.0 | 903.9 | 18,582.4 |
| Q3 | 3,071.8 | 493.5 | 3,565.3 | 259.8 | 8,850.7 | 653.0 | 9,763.5 | 3,589.8 | 2,590.6 | 730.1 | 90.2 | 7,000.7 | 59.9 | 136.0 | 417.6 | 613.5 | 20,943.1 | 8,825.5 | 1,326.7 | 10,152.2 | 12,694.7 | 1,253.3 | 13,947.9 | 1,292.9 | 18,440.3 |
| Q4 | 3,941.7 | 510.6 | 4,452.3 | 239.6 | 9,281.6 | 736.1 | 10,257.3 | 3,642.2 | 2,565.3 | 707.3 | 75.2 | 6,990.0 | 33.5 | 904.4 | 386.8 | 1,324.7 | 23,024.3 | 7,777.6 | 1,459.0 | 9,236.5 | 10,159.6 | 831.4 | 10,991.0 | -1,463.3 | 19,806.6 |
| 2013 Q1 | 3,687.4 | 524.5 | 4,211.8 | 244.1 | 9,698.6 | 780.0 | 10,722.7 | 3,875.9 | 1,987.5 | 507.6 | 95.7 | 6,466.6 | -47.9 | -2,461.4 | 364.2 | -2,145.1 | 19,256.0 | 11,238.2 | 1,376.5 | 12,614.7 | 9,985.5 | 1,164.5 | 11,150.0 | -212.8 | 20,508.0 |
| Q2 | 3,313.6 | 526.4 | 3,840.0 | 245.2 | 9,057.5 | 980.4 | 10,283.1 | 3,919.5 | 2,564.7 | 615.6 | 96.6 | 7,196.3 | -22.9 | -798.9 | 924.9 | 103.1 | 21,422.5 | 9,410.3 | 1,701.4 | 11,111.7 | 10,874.3 | 1,303.6 | 12,178.0 | 575.6 | 20,931.9 |
| Q3 | 3,219.5 | 530.3 | 3,749.9 | 248.5 | 8,869.7 | 841.3 | 9,959.5 | 3,960.7 | 2,436.4 | 411.2 | 97.1 | 6,905.4 | -14.1 | 23.2 | -504.8 | -495.7 | 20,119.1 | 11,960.5 | 1,764.9 | 13,725.4 | 10,927.0 | 1,326.4 | 12,253.4 | -673.9 | 20,917.2 |
| Q4 | 3,838.9 | 536.7 | 4,375.5 | 252.0 | 9,409.8 | 828.4 | 10,490.2 | 3,991.0 | 2,502.6 | 529.3 | 97.8 | 7,120.7 | -21.6 | 494.4 | 571.3 | 1,044.1 | 23,030.4 | 9,761.9 | 1,727.0 | 11,488.9 | 11,949.0 | 1,106.5 | 13,055.5 | 259.8 | 21,723.7 |
| 2014 Q1 | 3,895.8 | 555.3 | 4,451.1 | 254.4 | 9,764.2 | 828.7 | 10,847.3 | 4,036.1 | 2,406.2 | 529.2 | 98.0 | 7,069.5 | -45.4 | -328.5 | -137.5 | -511.4 | 21,856.5 | 10,280.6 | 1,289.3 | 11,569.9 | 11,029.2 | 1,921.5 | 12,950.7 | 713.9 | 21,189.6 |
| Q2 | 3,988.2 | 530.3 | 4,518.5 | 255.5 | 8,943.7 | 893.2 | 10,092.4 | 4,099.6 | 2,168.3 | 577.6 | 98.1 | 6,943.5 | -44.5 | -182.3 | -715.8 | -942.7 | 20,611.7 | 12,499.9 | 1,251.8 | 13,751.7 | 10,862.2 | 1,819.3 | 12,681.5 | 205.2 | 21,887.2 |
| Q3 | 3,872.2 | 536.3 | 4,408.5 | 258.1 | 8,970.3 | 907.4 | 10,135.8 | 4,092.9 | 1,769.5 | 551.8 | 98.2 | 6,512.3 | -19.0 | 426.0 | -573.5 | -166.5 | 20,890.1 | 11,939.9 | 1,353.0 | 13,292.9 | 10,444.6 | 1,825.6 | 12,270.2 | 265.7 | 22,178.5 |
| Q4 | 3,995.2 | 549.5 | 4,544.7 | 261.2 | 9,582.4 | 888.7 | 10,732.3 | 4,135.5 | 2,801.1 | 534.8 | 99.5 | 7,571.0 | 31.2 | -484.9 | -327.1 | -780.8 | 22,067.1 | 10,770.2 | 1,385.6 | 12,155.8 | 10,387.9 | 2,050.5 | 12,438.4 | 529.7 | 22,314.2 |
| 2015 Q1 | 3,980.6 | 570.3 | 4,550.9 | 262.9 | 9,914.7 | 892.8 | 11,070.4 | 4,139.6 | 2,403.6 | 462.5 | 102.3 | 7,108.0 | 106.0 | 53.8 | -1,099.7 | -939.8 | 21,789.5 | 11,494.4 | 1,118.5 | 12,612.9 | 10,771.8 | 1,974.7 | 12,746.4 | 119.8 | 21,775.7 |
| Q2 | 4,044.5 | 559.3 | 4,603.9 | 264.0 | 9,368.4 | 901.2 | 10,533.6 | 4,231.8 | 2,822.9 | 512.6 | 95.4 | 7,662.7 | 142.0 | 102.4 | -907.1 | -662.6 | 22,137.6 | 11,465.1 | 1,366.1 | 12,831.3 | 11,540.1 | 1,973.4 | 13,513.5 | 366.8 | 21,822.2 |
| Q3 | 3,953.7 | 569.6 | 4,523.3 | 266.4 | 9,747.5 | 890.3 | 10,904.3 | 4,273.1 | 3,076.9 | 522.9 | 98.4 | 7,971.4 | 139.2 | 101.0 | 753.4 | 993.6 | 24,392.5 | 6,468.3 | 1,409.8 | 7,878.1 | 10,857.7 | 1,866.1 | 12,723.8 | 1,423.7 | 20,970.6 |
| Q4 | 4,116.4 | 575.7 | 4,692.0 | 268.5 | 9,809.7 | 897.5 | 10,975.7 | 4,276.1 | 2,874.5 | 561.7 | 102.0 | 7,814.3 | 97.5 | 2,364.2 | -863.3 | 1,598.3 | 25,080.4 | 6,841.9 | 1,321.3 | 8,163.1 | 10,457.7 | 2,320.7 | 12,778.3 | 1,048.9 | 21,514.1 |
| 2016 Q1 | 4,062.4 | 599.6 | 4,662.0 | 269.4 | 10,170.8 | 927.1 | 11,367.3 | 4,321.1 | 2,519.7 | 412.6 | 104.6 | 7,358.0 | 16.9 | -1,831.7 | 2,000.0 | 185.2 | 23,572.5 | 10,057.9 | 1,356.4 | 11,414.3 | 10,389.9 | 1,769.8 | 12,159.7 | -568.9 | 22,258.2 |
| Q2 | 4,114.9 | 598.5 | 4,713.4 | 271.7 | 9,330.3 | 933.9 | 10,535.9 | 4,435.8 | 3,132.0 | 501.6 | 99.0 | 8,168.5 | -23.1 | -373.3 | 700.0 | 303.6 | 23,721.3 | 13,302.6 | 1,168.6 | 14,471.2 | 10,591.6 | 3,733.5 | 14,325.2 | -1,198.0 | 22,669.3 |
| Q3 | 4,042.5 | 610.5 | 4,653.0 | 276.1 | 9,965.8 | 939.5 | 11,181.4 | 4,432.5 | 2,929.0 | 594.9 | 101.6 | 8,058.0 | -22.6 | -460.8 | -1,655.0 | -2,138.5 | 21,754.0 | 10,052.0 | 962.6 | 11,014.6 | 9,495.8 | 1,440.4 | 10,936.2 | 584.8 | 22,417.2 |
| Q4 | 4,143.7 | 620.1 | 4,763.8 | 278.0 | 10,219.7 | 876.1 | 11,373.8 | 4,436.8 | 3,080.9 | 462.6 | 105.0 | 8,085.3 | 18.4 | 205.0 | -389.3 | -165.9 | 24,057.0 | 8,598.4 | 1,413.2 | 10,011.6 | 9,915.3 | 1,645.0 | 11,560.3 | -65.6 | 22,442.7 |
| 2017 Q1 | 4,032.5 | 624.3 | 4,656.8 | 277.3 | 10,539.0 | 867.8 | 11,684.1 | 4,482.7 | 2,141.1 | 338.3 | 106.4 | 7,068.5 | 100.9 | 3.5 | -2,200.0 | -2,095.6 | 21,313.9 | 9,791.2 | 1,114.5 | 10,905.7 | 7,101.4 | 1,587.1 | 8,688.5 | -1,060.6 | 22,470.5 |
| Q2 | 4,196.6 | 627.0 | 4,823.6 | 281.0 | 10,220.5 | 898.8 | 11,400.2 | 4,600.4 | 1,745.9 | 324.5 | 101.4 | 6,772.0 | 153.2 | 176.5 | -590.0 | -260.3 | 22,735.6 | 8,339.2 | 1,252.7 | 9,591.9 | 6,775.9 | 2,198.9 | 8,974.8 | -487.7 | 22,864.9 |
| Q3 | 4,108.8 | 628.1 | 4,736.9 | 284.5 | 10,904.7 | 922.2 | 12,111.4 | 4,604.4 | 2,233.3 | 422.8 | 103.2 | 7,363.6 | 148.7 | -244.8 | -100.0 | -196.1 | 24,015.8 | 7,456.0 | 1,370.1 | 8,826.1 | 7,519.9 | 2,512.8 | 10,032.6 | 372.4 | 23,181.7 |
| Q4 | 4,234.2 | 630.6 | 4,864.8 | 286.1 | 10,972.3 | 915.8 | 12,174.2 | 4,644.9 | 2,488.7 | 430.1 | 106.1 | 7,669.8 | 89.8 | 136.1 | -450.0 | -224.1 | 24,484.7 | 8,763.6 | 1,221.0 | 9,984.7 | 8,879.9 | 2,080.8 | 10,960.7 | 369.0 | 23,877.6 |
| 2018 Q1 | 4,177.1 | 634.3 | 4,811.3 | 287.1 | 11,228.9 | 909.3 | 12,425.3 | 4,658.0 | 2,370.7 | 443.3 | 108.4 | 7,580.4 | -23.9 | 21.7 | -1,200.0 | -1,202.2 | 23,614.9 | 8,224.4 | 984.8 | 9,209.2 | 7,683.5 | 1,883.3 | 9,566.8 | 180.0 | 23,437.2 |
| Q2 | 4,314.8 | 639.4 | 4,954.2 | 290.1 | 10,925.1 | 925.3 | 12,140.4 | 4,744.8 | 2,413.5 | 433.2 | 104.8 | 7,696.3 | -111.0 | 357.7 | -2,500.0 | -2,253.3 | 22,537.7 | 10,704.5 | 1,209.2 | 11,913.6 | 8,001.1 | 2,402.4 | 10,403.5 | 32.0 | 24,079.8 |
| Q3 | 4,392.6 | 647.4 | 5,040.0 | 295.5 | 11,094.1 | 936.5 | 12,326.1 | 4,767.5 | 2,521.4 | 444.8 | 106.2 | 7,839.9 | -170.6 | -413.0 | 468.0 | -115.7 | 25,090.3 | 7,962.3 | 1,449.8 | 9,412.1 | 8,016.1 | 2,688.4 | 10,704.5 | 335.4 | 24,133.3 |
| Q4 | 4,326.2 | 652.0 | 4,978.2 | 298.3 | 11,214.3 | 896.2 | 12,408.8 | 4,809.2 | 2,703.0 | 481.5 | 109.3 | 8,103.1 | -199.9 | 245.4 | 560.0 | 605.5 | 26,095.6 | 10,487.9 | 1,117.5 | 11,605.4 | 10,426.0 | 2,132.9 | 12,558.9 | -259.4 | 24,882.7 |
| 2019 Q1 | 4,192.5 | 651.7 | 4,844.2 | 299.3 | 11,445.1 | 908.3 | 12,652.7 | 4,829.2 | 2,512.7 | 549.6 | 111.6 | 8,003.1 | -201.7 | -115.2 | -141.0 | -457.9 | 25,042.1 | 7,934.9 | 1,312.8 | 9,247.7 | 8,845.2 | 1,901.1 | 10,746.3 | 888.4 | 24,432.0 |
| Q2 | 4,512.2 | 651.8 | 5,164.0 | 300.7 | 11,465.8 | 931.1 | 12,697.6 | 4,954.4 | 2,733.1 | 542.0 | 106.0 | 8,335.4 | -203.4 | 41.5 | -386.0 | -547.9 | 25,649.1 | 9,374.7 | 1,497.4 | 10,872.1 | 9,234.3 | 2,573.2 | 11,807.5 | 92.4 | 24,806.1 |
| Q3 | 4,572.3 | 653.7 | 5,226.0 | 302.0 | 11,555.2 | 948.3 | 12,805.5 | 4,961.3 | 2,942.6 | 412.1 | 107.4 | 8,423.4 | -205.1 | -171.3 | 1,700.0 | 1,323.6 | 27,778.5 | 5,751.1 | 992.3 | 6,743.4 | 8,878.8 | 2,275.4 | 11,154.2 | 1,502.5 | 24,870.1 |
| Q4 | 4,538.4 | 652.9 | 5,191.3 | 305.3 | 11,640.2 | 911.3 | 12,856.9 | 4,981.9 | 2,798.5 | 578.4 | 110.2 | 8,469.0 | -206.8 | 643.5 | 1,300.0 | 1,736.6 | 28,253.8 | 7,238.0 | 1,035.5 | 8,273.6 | 9,976.9 | 2,428.7 | 12,405.7 | 1,166.4 | 25,288.1 |

Note: 2016-2019 estimates are provisional



Copyrights © Statistics Botswana 2020

**Private Bag 0024
Gaborone.**

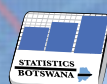
TOLL FREE NUMBER: 0800600200

Tel: (+267) 367 1300

Fax: (+267) 395 2201

E-mail: info@statsbots.org.bw

Website: <http://www.statsbots.org.bw>



STATISTICS BOTSWANA