

# STATISTICS BOTSWANA

## GROSS DOMESTIC PRODUCT

SECOND QUARTER OF 2019

Copyrights © Statistics Botswana 2019



Private Bag 0024, Gaborone.

TOLL FREE NUMBER: 0800600200 Tel: (+267) 367 1300 Fax: (+267) 395 2201

E-mail: [info@statsbots.org.bw](mailto:info@statsbots.org.bw) Website: <http://www.statsbots.org.bw>

---

## Table of Contents

---

1.	Preface	3
2.	Gross Domestic Product (GDP)	4
2.1	Revisions in this release	4
2.2.	Second Quarter GDP	4
2.2.2	Components of GDP by Type of Expenditure	6
Figure 1:	Real GDP growth rates	5
Figure 2:	Components of Gross Domestic Expenditure at 2006 prices	6

## 1. Preface

The statistical release contains the second quarter of 2019 Gross Domestic Product estimates by economic activity and components of final demand at current and constant prices.

Botswana's National Accounts are compiled according to the 1993 System of National Accounts (1993 SNA). The accounts presented in this publication adhere to the enhanced General Data Dissemination System (e-GDDS) of the International Monetary Fund (IMF), which sets out standards on coverage, periodicity and timeliness of data.

**The estimates are provisional and subject to change. First estimates are normally based on limited data and hence cannot be precise and absolute. The figures are revised after receiving finalized or audited data from companies in which some differences and inconsistencies in the previously published data may be observed.**

These estimates are not seasonally adjusted hence the variations may differ depending on the quarters.

The Gross Domestic Product (GDP) for the second quarter of 2019 was P49, 241.7 million compared to P48, 850.2 million registered during the previous quarter. This represents a quarterly increase of 0.8 percent in nominal terms between the two periods. During the quarter under review, Trade, Hotels & Restaurants remained the major contributor to GDP by 20.3 percent, followed by General Government, Mining & quarrying and Finance & Business services at 15.1, 14.7 and 14.4 percent respectively. The contribution of other sectors was below 6.7 percent with Water & Electricity being the lowest at 0.9 percent (**See Table 2**).

Real Gross Domestic Product for the second quarter of 2019 increased by 3.1 percent. The increase was attributed to the significant growth in real value added of Finance & Business Services and Trade, Hotels & Restaurants industries by 5.8 and 5.7 percent respectively (**See Table 4**).

Statistics Botswana acknowledges and appreciates the contribution of all stakeholders in the production of this report.

For more information and further enquiries, contact the Directorate of Stakeholder Relations at 3671300 or info@statsbots.org.bw. All Statistics Botswana outputs/publications are available on the website at www.statsbots.org.bw and at the Statistics Botswana Information Resource Center (Head-Office, Gaborone).



**Dr. Burton S. Mguni**  
Statistician General  
September 2019

## 2. Gross Domestic Product

### 2.1 Revisions in this release

Revisions have been made to the quarterly Gross Domestic Product (GDP) estimates published in March 2019. The changes were due to the updated source data and have affected Water & Electricity and Finance & Business services industries. Exports & Imports of goods & services were revised from 2014 in order to align them with Balance of Payments figures.

**Table A2: Key figures**

	Real Gross Domestic Product		Total Final Consumption		Gross Fixed Capital Formation	
	Percentage Change					
	Quarter-on - Quarter	Year-on-Year	Quarter-on-Quarter	Year-on -Year	Quarter-on - Quarter	Year-on- Year
First quarter 2014	-2.5	3.3	2.9	2.4	-0.7	9.3
Second quarter 2014	3.3	4.6	-4.5	3.5	-1.8	-3.5
Third quarter 2014	1.3	6.0	-0.5	6.1	-6.2	-5.7
Fourth quarter 2014	0.6	2.7	5.0	2.8	16.3	6.3
First quarter 2015	-2.4	2.8	2.3	2.1	-6.1	0.5
Second quarter 2015	0.2	-0.3	-3.1	3.6	7.8	10.4
Third quarter 2015	-3.9	-5.4	1.9	6.1	4.0	22.4
Fourth quarter 2015	2.6	-3.6	1.6	2.6	-2.0	3.2
First quarter 2016	3.5	2.3	2.3	2.6	-5.8	3.5
Second quarter 2016	1.8	3.9	-4.9	0.8	11.0	6.6
Third quarter 2016	-1.1	6.9	3.8	2.6	-1.4	1.1
Fourth quarter 2016	0.1	4.3	1.9	2.9	0.3	3.5
First quarter 2017	0.2	0.9	1.2	1.9	-12.6	-3.9
Second quarter 2017	1.8	0.8	-0.7	6.2	-4.2	-17.1
Third quarter 2017	1.5	3.5	4.3	6.7	8.7	-8.6
Fourth quarter 2017	2.9	6.4	0.8	5.6	4.2	-5.1
First quarter 2018	-1.6	4.5	1.2	5.6	-1.2	7.2
Second quarter 2018	2.5	5.2	-0.8	5.6	1.5	13.6
Third quarter 2018	0.3	4.0	1.1	2.4	1.9	6.5
Fourth quarter 2018	3.0	4.1	0.6	2.2	3.4	5.6
First quarter 2019	-1.5	4.3	1.1	2.1	-1.2	5.6
Second quarter 2019	1.4	3.1	1.4	4.3	1.7	5.8

### 2.2. Second Quarter GDP

The estimated GDP at current prices for the second quarter of 2019 was P49, 241.7 million compared to P48, 850.2 million registered in the first quarter of 2019 (See table 1).

GDP at constant 2006 prices for the second quarter of 2019 was P24, 815.5 million compared to P24, 482.3 million recorded in the first quarter of 2019 (See table 3).

The domestic economy in real terms increased by 3.1 percent in the second quarter of 2019 compared to a rise of 5.2 percent recorded in the same quarter of 2018. The growth was attributed to real value added of Finance & Business Services, Trade, Hotels & Restaurants, and Transport & Communications which increased by 5.8, 5.7 and 5.5 percent respectively. All other industries recorded positive growths of more than 2.0 percent except Agriculture and Mining which declined by 0.4 and 7.9 percent respectively (See table 4).

The increase of 5.8 percent in the real value added of the Finance and Business Services industry was mainly due to the rise in the value added of Real Estate, Banks and Business Services by 6.2, 6.1 and 5.9 percent respectively.

Trade, Hotels and Restaurants real value added increased by 5.7 percent in the second quarter of 2019 compared to an increase of 9.0 percent registered in the same quarter of the previous year. The positive growth is attributed to an increase in real value added of Retail Trade and Hotels & Restaurants sub industries by 6.6 and 6.5 percent respectively. The significant increase in the Retail Trade value added can be attributed to opening of new malls around the country.

Transport and Communications value added increased by 5.5 percent in the second quarter of 2019. The growth was mainly attributed to the increase in real value added of Post & Communications and Road Transport by 6.9 and 5.8 percent respectively.

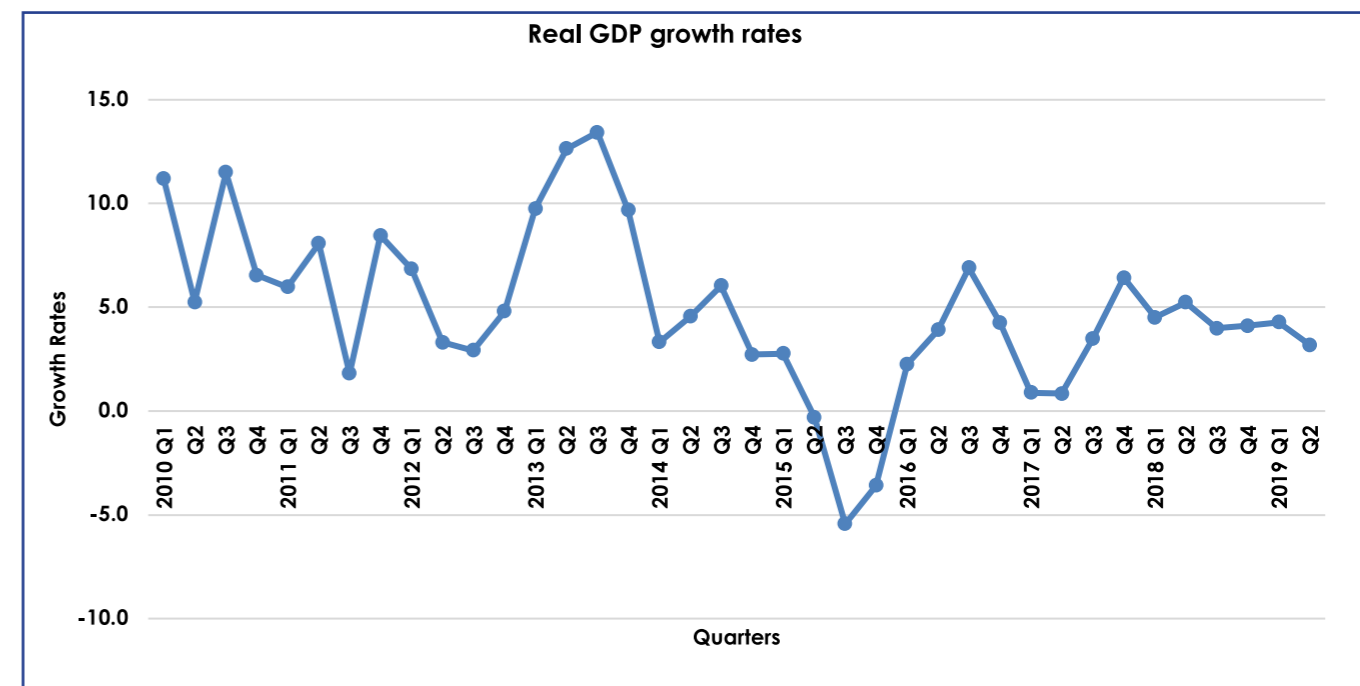
Water and Electricity value added at constant 2006 prices for the second quarter of 2019 was P272.7 million compared to P264.4 million registered in the same quarter of 2018, recording an increase of 3.1 percent. In the first quarter of 2019, Electricity recorded a positive value added of P23.5 million compared to P26.5 million registered in the same quarter of 2018 leading to a negative growth of 11.6 percent. The decrease in the Electricity real value added is attributed to a decline in the local electricity production by 50.8 percent. Imports of Electricity went up by 202.8 percent during the quarter under review. The significant decrease in local Electricity production were largely due to reduced performance of the Morupule B Power Station which was operating with one unit.

The fall of 0.4 percent in the real value added of the Agriculture industry was mainly due to the decline in the value added of Other Agriculture sub sector which recorded a decline of 1.0 percent. The production of fruits and vegetables decreased by 55.2 percent during the quarter under review.

The drop in the real value added of Mining by 7.9 percent was mainly influenced by Diamond and Coal value added. Diamond production in carats went down by 8.4 percent while Coal production in tonnes decreased by 6.3 percent in the second quarter of 2019. The decrease in diamond production was caused by Orapa production which went down by 23 percent due to planned plant maintenance shutdown in April 2019.

Non-mining GDP increased by 4.5 percent in the second quarter of 2019 compared to 5.0 percent registered in the same quarter of the previous year.

**Figure 1: Real GDP growth rates**



## 2.2.2 Components of GDP by Type of Expenditure

Total final consumption expenditure recorded an increase of 4.3 percent in the second quarter of 2019, however in the same quarter of the previous year it rose by 5.6 percent. Government and Household final consumption grew by 4.2 and 4.4 percent respectively. Gross Fixed Capital Formation rose by 5.8 percent in the quarter under review.

In the case of foreign trade, real exports of goods and services decreased by 11.8 percent in the second quarter of 2019 compared to an increase of 25.6 percent realized in the same quarter of 2018.

Real Imports of goods and services recorded a growth of 4.2 percent during the quarter under review, compared to a 16.6 percent increase realized in the same quarter of the previous year.

Figure 2: Components of Gross Domestic Expenditure at 2006 prices

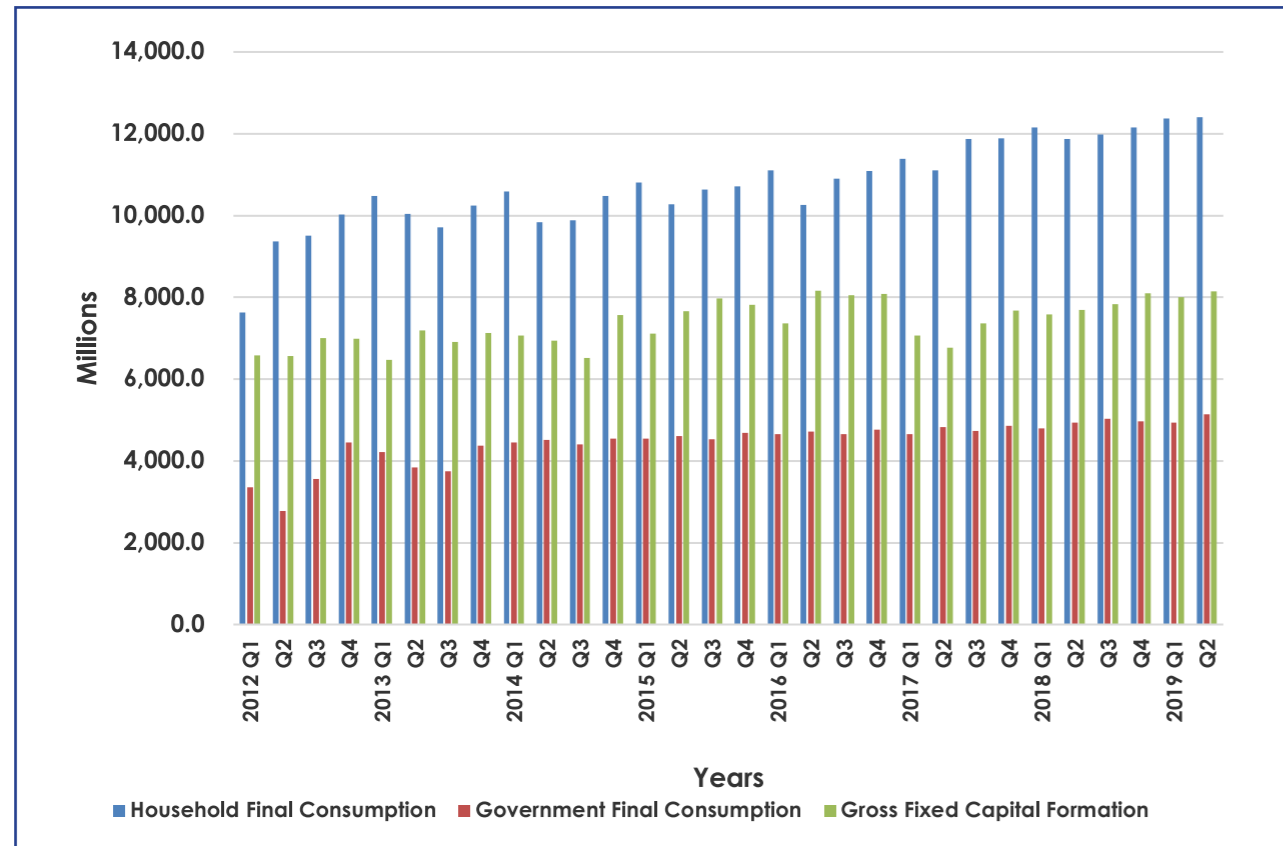


Table A6: GDP per capita (Pula)

Year	Nominal GDP per capita	Real GDP per capita
1994	7,869.2	22,793.4
1995	8,800.8	23,789.8
1996	10,550.8	24,562.5
1997	11,707.1	25,958.7
1998	12,615.7	25,437.9
1999	15,627.3	27,583.6
2000	17,991.2	27,814.8
2001	19,077.2	27,229.8
2002	20,097.5	28,349.6
2003	21,311.8	29,113.9
2004	23,650.1	29,350.0
2005	28,026.8	30,121.2
2006	32,038.3	32,038.3
2007	35,727.9	34,050.1
2008	39,021.1	35,509.2
2009	37,656.1	32,186.9
2010	43,705.9	34,298.6
2011	51,844.3	35,702.1
2012	53,116.0	36,507.0
2013	59,313.9	39,846.8
2014	67,867.9	40,743.3
2015	66,822.0	39,380.8
2016	76,840.9	40,450.2
2017	79,903.2	40,992.9
2018	82,959.1	42,169.3

Table 1: Value Added by Kind of Economic Activity at Current Prices (P million)

Calendar year	Agriculture	Mining	Manufacturing	Water & Electricity	Construction	Trade, Hotels & Restaurants	Transport & Communication	Finance & Business Service	General Government	Social & Personal Services	Value Added	Taxes on Import	Other Taxes on products	Subsidies	Total GDP
2004	949.9	10,801.5	2,334.8	806.8	2,376.3	5,116.3	1,449.5	5,330.5	6,151.8	2,110.2	37,427.5	2,746.9	2,086.7	-224.6	42,036.6
2005	927.9	16,105.1	2,512.0	714.9	2,417.8	5,498.9	1,825.1	5,918.6	7,195.5	2,544.4	45,660.2	3,174.9	2,172.2	-255.1	50,752.2
2006	1,210.7	19,019.0	3,123.1	785.1	2,838.0	7,032.3	2,250.5	6,675.4	7,818.5	2,938.9	53,691.6	3,428.8	2,276.3	-289.8	59,106.9
2007	1,504.7	19,567.7	4,206.6	751.5	3,544.1	8,243.6	2,697.3	7,653.0	8,887.4	3,255.8	60,311.7	4,290.5	2,879.7	-329.2	67,152.7
2008	1,887.5	18,643.5	4,278.9	654.1	3,726.9	10,047.1	3,303.9	9,316.7	10,899.5	3,847.4	66,605.5	4,701.4	3,788.1	-374.0	74,720.9
2009	2,071.0	11,209.6	4,662.3	317.2	4,495.1	11,162.8	3,993.0	9,694.8	12,316.3	4,593.3	64,515.3	4,535.3	4,836.6	-424.9	73,462.4
2010	2,161.3	16,660.8	5,548.3	411.9	5,056.1	13,084.3	4,470.8	11,609.6	13,377.3	5,242.7	77,623.1	4,425.0	5,252.1	-432.7	86,867.4
2011	2,636.0	24,529.1	6,074.2	-58.8	6,247.3	15,595.3	5,113.9	13,978.8	14,777.6	5,881.2	94,774.5	5,055.4	5,598.3	-448.3	104,979.9
2012	2,961.3	19,286.5	6,523.2	-621.2	7,464.5	16,896.7	6,325.3	16,467.8	16,923.7	6,750.2	98,978.1	5,560.5	5,804.8	-472.9	109,870.4
2013	2,876.9	24,243.4	7,285.1	-123.2	7,997.9	21,211.3	6,906.2	17,717.0	17,731.0	7,344.1	113,189.7	6,403.1	6,083.2	-517.7	125,158.3
2014	3,045.3	32,403.3	7,740.3	-581.5	8,689.7	26,182.3	7,788.2	19,284.3	19,946.0	8,138.4	132,636.4	7,107.4	6,691.5	-566.6	145,868.6
2015	3,215.0	25,962.2	8,441.7	-219.2	9,606.6	23,711.4	8,559.3	21,517.5	22,491.1	8,652.9	131,938.5	7,541.6	7,205.1	-619.0	146,066.2
2016	3,496.1	34,912.5	8,859.5	395.0	10,574.9	30,996.7	9,642.7	23,348.9	23,926.8	9,259.3	155,412.5	8,054.3	7,782.0	-685.2	170,563.6
2017	3,583.8	31,261.7	9,214.5	1,770.1	11,487.6	35,058.6	10,622.7	25,049.6	25,839.7	9,899.4	163,787.6	8,656.3	8,378.5	-720.4	180,102.1
2018	3,794.3	31,065.7	9,794.7	2,229.1	12,574.6	36,570.0	11,508.7	26,895.6	27,538.7	10,502.2	172,473.5	9,113.3	9,066.8	-785.1	189,868.5
2004 Q1	185.5	2,721.9	569.5	183.1	604.5	1,261.8	346.5	1,261.5	1,429.6	509.3	9,073.3	549.5	681.8	-51.3	10,253.3
Q2	317.6	1,348.6	582.2	194.3	586.3	1,294.1	337.0	1,253.5	1,522.9	513.2	7,949.9	768.1	412.6	-57.4	9,073.2
Q3	265.1	3,647.8	571.9	208.5	607.9	1,279.8	375.6	1,389.7	1,602.8	537.0	10,486.1	719.3	326.1	-54.7	11,476.8
Q4	181.6	3,083.2	611.2	220.9	577.5	1,280.5	390.5	1,425.8	1,596.4	550.7	9,918.3	710.0	666.3	-61.1	11,233.4
2005 Q1	222.2	4,040.3	606.6	160.4	576.5	1,237.7	404.7	1,405.4	1,615.8	588.7	10,858.3	798.4	744.7	-58.3	12,343.1
Q2	254.2	2,939.0	620.9	174.0	595.1	1,323.6	416.5	1,427.3	1,693.5	610.0	10,054.2	718.5	419.1	-65.2	11,126.7
Q3	288.6	5,341.3	634.7	183.7	615.1	1,405.6	492.5	1,518.6	1,852.6	661.1	12,993.9	646.9	609.0	-62.2	14,187.7
Q4	162.9	3,784.5	649.8	196.7	631.0	1,532.0	511.4	1,567.3	2,033.6	684.7	11,753.8	1,011.1	399.3	-69.5	13,094.7
2006 Q1	350.2	4,483.6	715.1	170.4	664.5	1,676.4	524.4	1,648.8	1,723.6	718.3	12,675.4	766.1	626.8	-66.3	14,002.0
Q2	258.4	3,463.4	722.3	177.9	685.7	1,700.0	550.0	1,649.0	2,001.7	725.2	11,933.6	848.6	501.7	-74.0	13,209.9
Q3	355.1	5,746.3	812.6	205.4	803.9	1,789.6	569.2	1,734.1	2,028.3	756.8	14,801.2	951.5	533.6	-70.6	16,215.7
Q4	247.0	5,325.6	873.1	231.4	683.9	1,866.3	606.9	1,643.5	2,064.9	738.7	14,281.4	862.6	614.2	-78.9	15,679.3
2007 Q1	319.9	4,938.4	938.7	195.3	774.8	1,927.0	603.9	1,897.3	2,021.5	761.2	14,378.0	814.2	617.0	-75.3	15,733.9
Q2	478.6	3,760.5	1,092.6	193.6	859.3	2,037.4	669.8	1,907.7	2,251.5	789.7	14,040.8	1,145.0	672.7	-84.1	15,774.4
Q3	456.6	6,165.2	1,100.1	183.8	898.7	2,035.8	698.4	1,974.1	2,299.5	854.7	16,666.9	1,160.1	767.4	-80.2	18,514.2
Q4	249.6	4,703.6	1,075.2	178.8	1,011.3	2,243.4	725.1	1,873.9	2,314.7	850.2	15,225.9	1,171.3	822.6	-89.6	17,130.1
2008 Q1	416.0	4,966.0	940.5	150.8	853.8	2,269.1	779.2	2,032.1	2,326.4	900.4	15,634.3	1,130.1	805.7	-85.5	17,484.6
Q2	452.7	3,584.5	1,123.3	159.0	918.1	2,452.9	806.5	2,171.4	2,782.2	906.0	15,356.7	1,171.4	854.4	-95.5	17,286.9
Q3	558.8	5,395.9	1,132.1	161.1	948.1	2,583.8	844.7	2,514.3	2,864.1	1,003.0	18,006.0	1,194.7	1,039.3	-91.1	20,148.9
Q4	460.0	4,697.1	1,083.0	183.2	1,006.8	2,741.2	873.5	2,598.9	2,926.9	1,037.9	17,608.6	1,205.1	1,088.6	-101.8	19,800.4
2009 Q1	428.6	1,950.5	1,100.1	83.1	1,060.6	2,725.5	909.6	2,374.6	2,881.6	1,123.8	14,637.9	1,007.4	1,047.9	-97.1	16,596.0
Q2	535.8	3,272.8	1,202.2	79.2	1,137.9	2,882.6	950.4	2,365.8	3,093.0	1,122.8	16,642.5	1,089.0	1,108.7	-108.5	18,731.5
Q3	603.5	2,519.6	1,147.9	65.2	1,199.7	2,841.3	1,031.5	2,377.3	3,156.2	1,191.7	16,134.0	1,155.4	1,286.0	-103.5	18,471.9
Q4	503.1	3,466.7	1,212.1	89.6	1,096.9	2,713.4	1,101.5	2,577.1	3,185.5	1,154.9	17,101.0	1,283.6	1,394.1	-115.7	19,663.0
2010 Q1	490.8	3,242.2	1,277.1	128.2	1,153.3	2,943.0	1,040.7	2,703.1	3,136.9	1,261.5	17,376.6	1,082.3	1,257.7	-98.9	19,617.7
Q2	595.0	3,759.1	1,357.3	101.1	1,150.6	3,267.1	1,080.3	2,881.7	3,179.0	1,302.7	18,673.9	1,049.8	1,301.7	-110.5	20,914.9
Q3	580.3	5,085.7	1,412.3	85.5	1,351.0	3,496.6	1,165.3	2,911.5	3,338.1	1,355.8	20,782.1	1,102.3	1,327.7	-105.4	23,106.7
Q4	495.2	4,573.8	1,501.6	97.1	1,401.3	3,377.5	1,184.5	3,113.3	3,723.4	1,322.8	20,790.5	1,190.5	1,364.9	-117.8	23,228.1

Table 1 Continued: Value Added by Kind of Economic Activity at Current Prices (P million)

Calendar year	Agriculture	Mining	Manufacturing	Water & Electricity	Construction	Trade, Hotels & Restaurants	Transport & Communication	Finance & Business Service	General Government	Social & Personal Services	Value Added	Taxes on Import	Other Taxes on products	Subsidies	Total GDP
2011 Q1	499.9	5,824.8	1,362.8	-0.1	1,424.7	3,821.3	1,201.2	3,162.6	3,021.0	1,328.4	21,646.7	897.4	1,433.1	-114.3	23,862.8
Q2	667.8	6,113.8	1,426.5	-11.2	1,472.6	3,716.6	1,235.1	3,352.9	3,725.1	1,441.8	23,141.1	1,412.1	1,473.4	-102.2	25,924.5
Q3	716.1	6,598.8	1,585.0	-39.6	1,638.1	3,839.1	1,324.9	3,624.8	3,677.8	1,492.5	24,457.6	1,412.0	1,201.6	-113.9	26,957.3
Q4	752.2	5,991.6	1,699.8	-7.9	1,711.8	4,218.3	1,352.7	3,838.5	4,353.7	1,618.4	25,529.1	1,333.9	1,490.2	-117.9	28,235.3
2012 Q1	728.0	4,617.1	1,601.4	-23.3	1,830.9	4,211.2	1,509.2	3,790.4	3,681.4	1,609.6	23,555.9	1,235.0	1,368.9	-115.8	26,044.1
Q2	796.0	5,524.0	1,627.7	-265.7	1,859.2	4,173.6	1,564.6	4,072.5	4,145.2	1,687.8	25,184.9	1,267.2	1,390.5	-116.6	27,726.0
Q3	808.9	4,443.1	1,668.5	-167.5	1,878.9	4,258.9	1,617.1	4,235.0	4,268.4	1,709.6	24,721.0	1,431.0	1,509.0	-119.2	27,541.9
Q4	628.4	4,702.3	1,625.6	-164.7	1,895.5	4,253.0	1,634.4	4,369.9	4,828.7	1,743.1	25,516.2	1,627.2	1,536.4	-121.4	28,558.5
2013 Q1	649.3	4,670.5	1,725.8	-4.6	1,954.4	4,822.0	1,661.8	4,296.6	3,981.9	1,742.6	25,500.4	1,580.3	1,468.5	-124.4	28,424.8
Q2	780.6	7,933.7	1,784.4	-126.1	1,988.8	5,006.7	1,677.4	4,377.4	4,346.5	1,833.7	29,603.0	1,511.0	1,472.5	-125.6	32,461.0
Q3	704.0	6,124.0	1,865.3	63.5	2,000.0	5,451.6	1,749.6	4,424.3	4,422.3	1,864.2	28,668.7	1,571.7	1,557.5	-132.3	31,665.4
Q4	743.0	5,515.3	1,909.6	-56.0	2,054.7	5,931.0	1,817.4	4,618.7	4,980.4	1,903.6	29,417.6	1,740.1	1,584.8	-135.4	32,607.1
2014 Q1	721.2	7,270.1	1,784.5	-295.0	2,139.5	6,378.4	1,924.2	4,637.1	4,716.9	1,982.8	31,259.8	1,759.4	1,636.5	-141.5	34,514.3
Q2	774.2	9,401.9	1,898.4	110.9	2,205.0	6,553.9	1,922.3	4,734.7	4,875.4	2,020.5	34,497.1	1,714.3	1,654.3	-140.0	37,725.7
Q3	762.1	7,289.1	1,986.3	-25.5	2,161.4	6,674.8	1,954.3	4,905.1	5,055.7	2,053.3	32,816.8	1,788.3	1,694.0	-143.4	36,155.8
Q4	787.8	8,442.1	2,071.1	-371.9	2,183.8	6,575.3	1,987.3	5,007.4	5,297.8	2,081.9	34,062.7	1,845.4	1,706.6	-141.8	37,472.9
2015 Q1	771.8	7,620.6	2,044.9	-296.6	2,331.0	6,132.7	2,022.4	5,063.6	5,376.4	2,118.8	33,185.5	1,836.3	1,690.8	-148.9	36,563.6
Q2	812.5	7,646.6	2,102.8	-4.2	2,420.9	5,747.7	2,089.3	5,324.5	5,562.5	2,139.5	33,842.2	1,887.1	1,768.0	-153.4	37,343.9
Q3	799.4	6,936.8	2,131.5	-18.1	2,402.9	5,777.7	2,199.2	5,476.1	5,783.1	2,175.4	33,663.9	1,932.7	1,857.1	-158.0	37,295.7
Q4	831.3	3,758.2	2,162.5	99.8	2,451.7	6,053.4	2,248.4	5,653.3	5,769.0	2,219.2	31,246.9	1,885.5	1,889.3	-158.7	34,862.9
2016 Q1	849.4	7,564.6	2,128.8	-91.2	2,526.0	6,947.1	2,253.3	5,591.8	5,901.6	2,2					

**Table 2: Contribution of Gross Value Added to GDP by Kind of Economic Activity at Current Prices**

Calendar Year	Agriculture	Mining	Manufacturing	Water & Electricity	Construction	Trade, Hotels & Restaurants	Transport & Communication	Finance & Business Service	General Government	Social & Personal Services	Value Added	Taxes on Import	Other Taxes on products	Subsidies	Total GDP
2004	2.3	25.7	5.6	1.9	5.7	12.2	3.4	12.7	14.6	5.0	89.0	6.5	5.0	-0.5	100.0
2005	1.8	31.7	4.9	1.4	4.8	10.8	3.6	11.7	14.2	5.0	90.0	6.3	4.3	-0.5	100.0
2006	2.0	32.2	5.3	1.3	4.8	11.9	3.8	11.3	13.2	5.0	90.8	5.8	3.9	-0.5	100.0
2007	2.2	29.1	6.3	1.1	5.3	12.3	4.0	11.4	13.2	4.8	89.8	6.4	4.3	-0.5	100.0
2008	2.5	25.0	5.7	0.9	5.0	13.4	4.4	12.5	14.6	5.1	89.1	6.3	5.1	-0.5	100.0
2009	2.8	15.3	6.3	0.4	6.1	15.2	5.4	13.2	16.8	6.3	87.8	6.2	6.6	-0.6	100.0
2010	2.5	19.2	6.4	0.5	5.8	15.1	5.1	13.4	15.4	6.0	89.4	5.1	6.0	-0.5	100.0
2011	2.5	23.4	5.8	-0.1	6.0	14.9	4.9	13.3	14.1	5.6	90.3	4.8	5.3	-0.4	100.0
2012	2.7	17.6	5.9	-0.6	6.8	15.4	5.8	15.0	15.4	6.1	90.1	5.1	5.3	-0.4	100.0
2013	2.3	19.4	5.8	-0.1	6.4	16.9	5.5	14.2	14.2	5.9	90.4	5.1	4.9	-0.4	100.0
2014	2.1	22.2	5.3	-0.4	6.0	17.9	5.3	13.2	13.7	5.6	90.9	4.9	4.6	-0.4	100.0
2015	2.2	17.8	5.8	-0.2	6.6	16.2	5.9	14.7	15.4	5.9	90.3	5.2	4.9	-0.4	100.0
2016	2.0	20.5	5.2	0.2	6.2	18.2	5.7	13.7	14.0	5.4	91.1	4.7	4.6	-0.4	100.0
2017	2.0	17.4	5.1	1.0	6.4	19.5	5.9	13.9	14.3	5.5	90.9	4.8	4.7	-0.4	100.0
2018	2.0	16.4	5.2	1.2	6.6	19.3	6.1	14.2	14.5	5.5	90.8	4.8	4.8	-0.4	100.0
2004 Q1	1.8	26.5	5.6	1.8	5.9	12.3	3.4	12.3	13.9	5.0	88.5	5.4	6.6	-0.5	100.0
Q2	3.5	14.9	6.4	2.1	6.5	14.3	3.7	13.8	16.8	5.7	87.6	8.5	4.5	-0.6	100.0
Q3	2.3	31.8	5.0	1.8	5.3	11.2	3.3	12.1	14.0	4.7	91.4	6.3	2.8	-0.5	100.0
Q4	1.6	27.4	5.4	2.0	5.1	11.4	3.5	12.7	14.2	4.9	88.3	6.3	5.9	-0.5	100.0
2005 Q1	1.8	32.7	4.9	1.3	4.7	10.0	3.3	11.4	13.1	4.8	88.0	6.5	6.0	-0.5	100.0
Q2	2.3	26.4	5.6	1.6	5.3	11.9	3.7	12.8	15.2	5.5	90.4	6.5	3.8	-0.6	100.0
Q3	2.0	37.6	4.5	1.3	4.3	9.9	3.5	10.7	13.1	4.7	91.6	4.6	4.3	-0.4	100.0
Q4	1.2	28.9	5.0	1.5	4.8	11.7	3.9	12.0	15.5	5.2	89.8	7.7	3.0	-0.5	100.0
2006 Q1	2.5	32.0	5.1	1.2	4.7	12.0	3.7	11.8	12.3	5.1	90.5	5.5	4.5	-0.5	100.0
Q2	2.0	26.2	5.5	1.3	5.2	12.9	4.2	12.5	15.2	5.5	90.3	6.4	3.8	-0.6	100.0
Q3	2.2	35.4	5.0	1.3	5.0	11.0	3.5	10.7	12.5	4.7	91.3	5.9	3.3	-0.4	100.0
Q4	1.6	34.0	5.6	1.5	4.4	11.9	3.9	10.5	13.2	4.7	91.1	5.5	3.9	-0.5	100.0
2007 Q1	2.0	31.4	6.0	1.2	4.9	12.2	3.8	12.1	12.8	4.8	91.4	5.2	3.9	-0.5	100.0
Q2	3.0	23.8	6.9	1.2	5.4	12.9	4.2	12.1	14.3	5.0	89.0	7.3	4.3	-0.5	100.0
Q3	2.5	33.3	5.9	1.0	4.9	11.0	3.8	10.7	12.4	4.6	90.0	6.3	4.1	-0.4	100.0
Q4	1.5	27.5	6.3	1.0	5.9	13.1	4.2	10.9	13.5	5.0	88.9	6.8	4.8	-0.5	100.0
2008 Q1	2.4	28.4	5.4	0.9	4.9	13.0	4.5	11.6	13.3	5.1	89.4	6.5	4.6	-0.5	100.0
Q2	2.6	20.7	6.5	0.9	5.3	14.2	4.7	12.6	16.1	5.2	88.8	6.8	4.9	-0.6	100.0
Q3	2.8	26.8	5.6	0.8	4.7	12.8	4.2	12.5	14.2	5.0	89.4	5.9	5.2	-0.5	100.0
Q4	2.3	23.7	5.5	0.9	5.1	13.8	4.4	13.1	14.8	5.2	88.9	6.1	5.5	-0.5	100.0
2009 Q1	2.6	11.8	6.6	0.5	6.4	16.4	5.5	14.3	17.4	6.8	88.2	6.1	6.3	-0.6	100.0
Q2	2.9	17.5	6.4	0.4	6.1	15.4	5.1	12.6	16.5	6.0	88.8	5.8	5.9	-0.6	100.0
Q3	3.3	13.6	6.2	0.4	6.5	15.4	5.6	12.9	17.1	6.5	87.3	6.3	7.0	-0.6	100.0
Q4	2.6	17.6	6.2	0.5	5.6	13.8	5.6	13.1	16.2	5.9	87.0	6.5	7.1	-0.6	100.0
2010 Q1	2.5	16.5	6.5	0.7	5.9	15.0	5.3	13.8	16.0	6.4	88.6	5.5	6.4	-0.5	100.0
Q2	2.8	18.0	6.5	0.5	5.5	15.6	5.2	13.8	15.2	6.2	89.3	5.0	6.2	-0.5	100.0
Q3	2.5	22.0	6.1	0.4	5.8	15.1	5.0	12.6	14.4	5.9	89.9	4.8	5.7	-0.5	100.0
Q4	2.1	19.7	6.5	0.4	6.0	14.5	5.1	13.4	16.0	5.7	89.5	5.1	5.9	-0.5	100.0

**Table 2 Continued : Contribution of Gross Value Added to GDP by Kind of Economic Activity at Current Prices**

Calendar Year	Agriculture	Mining	Manufacturing	Water & Electricity	Construction	Trade, Hotels & Restaurants	Transport & Communication	Finance & Business Service	General Government	Social & Personal Services	Value Added	Taxes on Import	Other Taxes on products	Subsidies	Total GDP
2011 Q1	2.1	24.4	5.7	0.0	6.0	16.0	5.0	13.3	12.7	5.6	90.7	3.8	6.0	-0.5	100.0
Q2	2.6	23.6	5.5	0.0	5.7	14.3	4.8	12.9	14.4	5.6	89.3	5.4	5.7	-0.4	100.0
Q3	2.7	24.5	5.9	-0.1	6.1	14.2	4.9	13.4	13.6	5.5	90.7	5.2	4.5	-0.4	100.0
Q4	2.7	21.2	6.0	0.0	6.1	14.9	4.8	13.6	15.4	5.7	90.4	4.7	5.3	-0.4	100.0
2012 Q1	2.8	17.7	6.1	-0.1	7.0	16.2	5.8	14.6	14.1	6.2	90.4	4.7	5.3	-0.4	100.0
Q2	2.9	19.9	5.9	-1.0	6.7	15.1	5.6	14.7	15.0	6.1	90.8	4.6	5.0	-0.4	100.0
Q3	2.9	16.1	6.1	-0.6	6.8	15.5	5.9	15.4	15.5	6.2	89.8	5.2	5.5	-0.4	100.0
Q4	2.2	16.5	5.7	-0.6	6.6	14.9	5.7	15.3	16.9	6.1	89.3	5.7	5.4	-0.4	100.0
2013 Q1	2.3	16.4	6.1	0.0	6.9	17.0	5.8	15.1	14.0	6.1	89.7	5.6	5.2	-0.4	100.0
Q2	2.4	24.4	5.5	-0.4	6.1	15.4	5.2	13.5	13.4	5.6	91.2	4.7	4.5	-0.4	100.0
Q3	2.2	19.3	5.9	0.2	6.3	17.2	5.5	14.0	14.0	5.9	90.5	5.0	4.9	-0.4	100.0
Q4	2.3	16.9	5.9	-0.2	6.3	18.2	5.6	14.2	15.3	5.8	90.2	5.3	4.9	-0.4	100.0
2014 Q1	2.1	21.1	5.2	-0.9	6.2	18.5	5.6	13.4	13.7	5.7	90.6	5.1	4.7	-0.4	100.0
Q2	2.1	24.9	5.0	0.3	5.8	17.4	5.1	12.6	12.9	5.4	91.4	4.5	4.4	-0.4	100.0
Q3	2.1	20.2	5.5	-0.1	6.0	18.5	5.4	13.6	14.0	5.7	90.8	4.9	4.7	-0.4	100.0
Q4	2.1	22.5	5.5	-1.0	5.8	17.5	5.3	13.4	14.1	5.6	90.9	4.9	4.6	-0.4	100.0
2015 Q1	2.1	20.8	5.6	-0.8	6.4	16.8	5.5	13.8	14.7	5.8	90.8	5.0	4.6	-0.4	100.0
Q2	2.2	20.5	5.6	0.0	6.5	15.4	5.6	14.3	14.9	5.7	90.6	5.1	4.7	-0.4	100.0
Q3	2.1	18.6	5.7	0.0	6.4	15.5	5.9	14.7	15.5	5.8	90.3	5.2	5.0	-0.4	100.0
Q4	2.4	10.8	6.2	0.3	7.0	17.4	6.4	16.2	16.5	6.4	89.6	5.4	5.4	-0.5	100.0
2016 Q1	2.1	19.1	5.4	-0.2	6.4	17.5	5.7	14.1	14.9	5.7	90.6	5.1	4.7	-0.4	100.0
Q2	2.1	20.5	5.1	0.2	6.1	18.8	5.6	13.5	14.0	5.4	91.2	4.7	4.6	-0.4	100.0
Q3	2.0	22.0	5.1	0.0	6.1	18.2	5.6	13.4	13.7	5.3	91.4	4.5	4.5	-0.4	100.0
Q4	2.0	20.1	5.2	0.9	6.2	18.2	5.8	13.9	13.6	5.4	91.3	4.7	4.5	-0.4	100.0
2017 Q1	2.0	17.8	4.9	0.4	6.3	20.5	5.9	14.0	14.0	5.5	91.2	4.8	4.4	-0.4	100.0
Q2	2.0	17.6	5.1	1.0	6.4	18.9	5.9	13.9	14.6	5.5	91.0	4.9	4.6	-0.4	100.0
Q3	2.0	18.8	5.2	1.2	6.4	17.8	5.9	13.7	14.4	5.4	90.7	4.8	4.9	-0.4	100.0
Q4	2.0	15.3	5.2	1.3	6.5	20.7	5.9	14.0	14.4	5.5	90.9	4.8	4.8	-0.4	100.0
2018 Q1	2.0	15.9	5.0	1.2	6.6	19.0	6.2	14.4	14.7	5.6	90.6	5.0	4.7	-0.4	100.0
Q2	2.0	15.7	5.1	1.3	6.6	20.0	6.0	14.2	14.6	5.5	91.1	4.8	4.5	-0.4	100.0
Q3	2.0	18.1	5.2	1.2	6.6	18.4	6.0	13.8	14.2	5.4	90.8	4.7	4.9	-0.4	100.0
Q4	1.9	15.8	5.3	1.0	6.7	19.8	6.1	14.2	14.5	5.5	90.8	4.7	4.9	-0.4	100.0
2019 Q1	1.9	16.6	5.0	1.2	6.7	19.0	6.1	14.3	14.5	5.6	90.7	4.9	4.8	-0.4	100.0
Q2	2.0	14.7	5.2	0.9	6.7	20.3	6.1	14.4	15.1	5.6	91.0	4.8	4.6	-0.4	100.0

**Table 3: Value Added by Kind of Economic Activity at Constant 2006 Prices (P million)**

Calendar year	Agriculture	Mining	Manufacturing	Water & Electricity	Construction	Trade, Hotels & Restaurants	Transport & Communication	Finance & Business Service	General Government	Social & Personal Services	Value Added	Taxes on Import	Other Taxes on products	Subsidies	Total GDP
<b>2004</b>	1,095.8	16,705.0	2,555.2	886.8	2,478.5	5,321.5	1,735.0	6,273.1	8,081.7	2,176.8	47,309.3	2,882.1	2,212.5	-236.1	<b>52,167.7</b>
<b>2005</b>	1,068.2	18,087.7	2,602.4	762.2	2,448.6	5,521.2	1,978.4	6,361.8	7,993.5	2,582.6	49,406.7	3,202.9	2,192.6	-257.4	<b>54,544.8</b>
<b>2006</b>	1,210.7	19,019.0	3,123.1	785.1	2,838.0	7,032.3	2,250.5	6,675.4	7,818.5	2,938.9	53,691.6	3,428.8	2,276.3	-289.8	<b>59,106.9</b>
<b>2007</b>	1,358.9	18,113.7	3,925.6	746.3	3,497.0	8,104.3	2,597.5	7,425.6	8,256.2	3,179.8	57,205.0	4,261.2	2,859.9	-327.0	<b>63,999.1</b>
<b>2008</b>	1,385.7	18,160.9	3,824.9	795.5	3,524.3	9,560.9	2,862.0	8,293.4	8,276.6	3,663.9	60,348.0	4,434.1	3,566.5	-352.6	<b>67,996.1</b>
<b>2009</b>	1,474.0	10,466.0	4,016.5	753.9	3,958.8	9,929.8	3,285.3	8,414.9	8,510.5	4,076.2	54,885.9	4,004.4	4,278.1	-375.6	<b>62,792.8</b>
<b>2010</b>	1,559.7	12,596.2	4,173.5	844.2	4,101.3	10,852.0	3,496.8	9,379.2	9,150.6	4,329.7	60,483.3	3,679.4	4,367.1	-359.8	<b>68,170.1</b>
<b>2011</b>	1,562.4	11,782.2	4,647.3	555.4	5,047.2	12,348.0	3,708.6	10,098.0	9,723.1	4,689.7	64,161.9	4,028.0	4,460.6	-357.2	<b>72,293.3</b>
<b>2012</b>	1,429.1	11,101.2	4,819.5	402.9	5,774.8	13,188.0	4,111.9	11,018.1	9,993.4	5,191.9	67,030.9	4,331.0	4,521.3	-368.4	<b>75,514.8</b>
<b>2013</b>	1,448.1	13,784.3	5,134.4	674.9	6,010.9	15,298.3	4,422.6	11,973.5	10,592.0	5,607.6	74,946.6	4,886.7	4,642.6	-395.1	<b>84,080.7</b>
<b>2014</b>	1,443.1	13,851.1	5,160.3	298.5	6,234.7	16,933.1	4,854.6	12,291.2	11,079.4	5,843.3	77,989.3	5,145.8	4,844.7	-410.3	<b>87,569.5</b>
<b>2015</b>	1,447.7	11,132.2	5,327.4	319.4	6,481.6	16,267.6	5,075.5	12,843.7	11,442.4	6,055.2	76,392.7	5,174.3	4,940.2	-424.6	<b>86,082.6</b>
<b>2016</b>	1,456.2	10,737.7	5,410.0	623.5	6,755.3	18,453.3	5,408.1	13,268.8	11,714.0	6,266.6	80,093.5	5,153.7	4,978.5	-438.3	<b>89,787.4</b>
<b>2017</b>	1,487.6	9,545.1	5,528.2	872.0	6,993.0	20,106.1	5,661.0	13,806.3	11,895.1	6,441.1	82,335.6	5,339.7	5,167.1	-444.4	<b>92,398.0</b>
<b>2018</b>	1,530.5	10,255.6	5,725.3	1,055.4	7,251.5	20,757.1	6,023.2	14,498.7	12,253.4	6,669.8	86,020.4	5,496.8	5,467.3	-471.5	<b>96,513.0</b>
<b>2004 Q1</b>	224.0	3,333.2	623.7	221.4	663.0	1,352.4	436.4	1,544.3	1,895.8	546.0	10,840.2	621.2	770.7	-58.0	<b>12,174.0</b>
<b>Q2</b>	369.1	3,552.5	620.5	209.3	608.9	1,354.2	396.5	1,477.6	2,054.1	526.6	11,169.3	809.4	434.8	-60.5	<b>12,353.1</b>
<b>Q3</b>	302.9	4,921.1	638.9	219.4	629.8	1,317.7	444.7	1,617.3	2,077.1	549.3	12,718.4	731.9	331.7	-55.7	<b>13,726.4</b>
<b>Q4</b>	199.8	4,898.1	672.0	236.7	576.8	1,297.1	457.4	1,633.8	2,054.6	554.8	12,581.3	719.6	675.3	-62.0	<b>13,914.2</b>
<b>2005 Q1</b>	270.8	3,807.3	618.9	190.4	614.3	1,313.8	465.4	1,550.2	1,878.8	627.5	11,337.2	807.8	753.5	-59.0	<b>12,839.5</b>
<b>Q2</b>	290.4	4,333.9	627.7	186.9	612.0	1,350.1	460.8	1,507.9	1,936.1	630.7	11,936.5	725.8	423.4	-65.8	<b>13,019.9</b>
<b>Q3</b>	324.3	4,923.6	679.7	188.9	611.9	1,386.0	527.1	1,658.4	2,020.4	660.8	12,981.1	652.3	614.1	-62.7	<b>14,184.8</b>
<b>Q4</b>	182.8	5,023.0	676.1	196.1	610.4	1,471.3	525.2	1,645.3	2,158.2	663.7	13,151.9	1,016.9	401.6	-69.9	<b>14,500.6</b>
<b>2006 Q1</b>	342.4	4,585.3	746.6	193.6	677.3	1,733.6	540.2	1,685.7	1,790.2	740.2	13,035.1	791.9	646.9	-68.5	<b>14,405.4</b>
<b>Q2</b>	244.3	4,577.9	734.5	191.5	680.2	1,710.6	553.9	1,643.9	2,024.1	728.5	13,089.3	853.7	503.8	-74.5	<b>14,372.3</b>
<b>Q3</b>	376.6	4,985.1	804.9	196.4	798.4	1,763.6	567.5	1,719.8	1,997.8	745.4	13,955.4	940.8	526.7	-69.8	<b>15,353.1</b>
<b>Q4</b>	247.4	4,870.7	837.1	203.6	682.1	1,824.5	588.9	1,626.1	2,006.4	724.9	13,611.8	842.5	598.9	-77.1	<b>14,976.1</b>
<b>2007 Q1</b>	332.6	4,517.8	931.8	193.1	791.7	1,957.8	602.0	1,923.3	1,966.2	769.2	13,985.4	810.4	614.2	-74.9	<b>15,335.1</b>
<b>Q2</b>	411.0	4,441.3	1,032.6	192.2	851.5	2,026.7	650.5	1,843.8	2,132.9	780.1	14,362.6	1,139.6	669.5	-83.7	<b>16,088.0</b>
<b>Q3</b>	409.1	4,523.4	999.9	183.0	879.4	1,981.0	667.9	1,922.4	2,094.2	823.4	14,483.8	1,151.5	761.8	-79.6	<b>16,317.6</b>
<b>Q4</b>	206.2	4,631.2	961.3	178.0	974.4	2,138.9	677.1	1,736.1	2,062.9	807.0	14,373.1	1,159.7	814.4	-88.8	<b>16,258.4</b>
<b>2008 Q1</b>	302.4	4,700.9	893.7	188.2	907.0	2,303.4	697.1	1,848.4	1,840.6	917.7	14,599.5	1,098.3	783.1	-83.1	<b>16,397.8</b>
<b>Q2</b>	404.1	4,570.7	1,020.1	194.2	874.9	2,375.3	705.7	2,075.4	2,141.6	877.4	15,239.5	1,108.0	808.2	-90.4	<b>17,065.3</b>
<b>Q3</b>	393.3	4,892.7	985.3	199.6	864.7	2,396.9	723.5	2,091.1	2,142.1	922.9	15,612.1	1,112.6	967.8	-84.9	<b>17,607.6</b>
<b>Q4</b>	285.9	3,996.5	925.8	213.5	877.7	2,485.2	735.6	2,278.6	2,152.3	945.8	14,896.9	1,115.3	1,007.4	-94.2	<b>16,925.3</b>
<b>2009 Q1</b>	373.1	2,011.2	1,036.1	171.4	977.2	2,466.2	774.8	2,135.5	2,061.2	1,023.9	13,030.5	931.5	971.4	-89.8	<b>14,843.7</b>
<b>Q2</b>	360.6	2,721.6	1,040.6	185.4	999.8	2,584.3	787.6	2,093.6	2,158.3	1,006.1	13,938.0	975.3	995.4	-97.2	<b>15,811.5</b>
<b>Q3</b>	404.8	2,616.2	943.4	184.9	1,035.2	2,504.3	846.0	2,016.1	2,149.1	1,040.0	13,740.1	1,008.1	1,124.9	-90.3	<b>15,782.8</b>
<b>Q4</b>	335.5	3,117.0	996.4	212.2	946.5	2,375.0	876.9	2,169.7	2,142.0	1,006.2	14,177.3	1,089.5	1,186.2	-98.2	<b>16,354.8</b>
<b>2010 Q1</b>	355.1	3,148.6	995.2	234.5	963.4	2,536.8	831.0	2,252.4	2,218.9	1,083.9	14,619.9	910.0	1,057.4	-83.2	<b>16,504.1</b>
<b>Q2</b>	432.8	2,905.5	1,024.9	202.3	940.2	2,719.6	848.2	2,368.4	2,253.0	1,081.3	14,776.1	874.4	1,084.1	-92.1	<b>16,642.5</b>
<b>Q3</b>	413.8	3,474.0	1,049.3	208.3	1,078.3	2,808.9	906.9	2,303.4	2,327.5	1,099.7	15,670.2	914.2	1,101.1	-87.5	<b>17,598.1</b>
<b>Q4</b>	358.0	3,068.1	1,104.1	199.1	1,119.5	2,786.7	910.7	2,455.0	2,351.2	1,064.8	15,417.2	980.8	1,124.5	-97.1	<b>17,425.4</b>

**Table 3 Continued : Value Added by Kind of Economic Activity at Constant 2006 Prices (P million)**

Calendar year	Agriculture	Mining	Manufacturing	Water & Electricity	Construction	Trade, Hotels & Restaurants	Transport & Communication	Finance & Business Service	General Govern-ment	Social & Personal Services	Value Added	Taxes on Import	Other Taxes on products	Subsidies	Total GDP
<b>2011 Q1</b>	350.7	3,021.8	1,123.2	148.6	1,183.9	3,144.7	912.6	2,478.9	2,211.0	1,130.8	15,706.2	713.0	1,163.4	-92.9	<b>17,489.7</b>
<b>Q2</b>	388.1	3,096.8	1,098.5	141.5	1,183.9	2,949.1	904.9	2,465.1	2,400.2	1,120.3	15,748.4	1,141.5	1,178.6	-81.8	<b>17,986.8</b>
<b>Q3</b>	397.2	2,914.4	1,166.5	120.0	1,320.4	3,011.0	944.5	2,479.2	2,377.7	1,198.3	15,929.2	1,127.2	951.7	-90.2	<b>17,917.8</b>
<b>Q4</b>	426.5	2,749.3	1,259.1	145.2	1,359.0	3,243.3	946.6	2,674.8	2,734.1	1,240.4	16,778.2	1,046.3	1,166.8	-92.3	<b>18,899.0</b>
<b>2012 Q1</b>	366.1	2,934.8	1,234.5	167.9	1,422.2	3,196.4	1,014.0	2,647.2	2,514.7	1,243.2	16,741.0	965.2	1,069.7	-90.5	<b>18,685.5</b>
<b>Q2</b>	358.3	2,917.5	1,174.0	83.2	1,438.6	3,241.8	1,025.4	2,688.9	2,391.9	1,281.7	16,601.3	988.0	1,084.0	-90.9	<b>18,582.4</b>
<b>Q3</b>	359.4	2,224.0	1,208.4	92.8	1,452.2	3,370.3	1,038.9	2,811.3	2,363.8	1,323.4	16,244.5	1,114.0	1,174.5	-92.8	<b>18,440.3</b>
<b>Q4</b>	345.3	3,025.0	1,202.5	59.0	1,461.8	3,379.6	1,033.6	2,870.8	2,722.9	1,343.6	17,444.0	1,263.7	1,193.1	-94.2	<b>19,806.6</b>
<b>2013 Q1</b>	347.7	3,081.0	1,226.1	205.8	1,484.7	3,612.4	1,067.5	3,041.1	2,743.3	1,379.3	18,188.9	1,253.0	1,164.8	-98.7	<b>20,508.0</b>
<b>Q2</b>	370.5	3,816.9	1,293.3	189.7	1,503.8	3,632.4	1,083.6	2,946.8	2,557.4	1,385.7	18,780.1	1,137.4	1,108.9	-94.6	<b>20,931.9</b>
<b>Q3</b>	371.9	3,258.7	1,319.6	231.6	1,506.0	3,973.0	1,131.5	2,952.6	2,517.5	1,404.0	18,666.5	1,180.2	1,169.9	-99.4	<b>20,917.2</b>
<b>Q4</b>	358.0	3,627.7	1,295.4	47.7	1,516.5	4,080.4	1,140.0	3,033.0	2,773.8	1,438.6	19,311.0	1,316.1	1,199.0	-102.4	<b>21,723.7</b>
<b>2014 Q1</b>	348.9	3,226.5	1,205.8	78.8	1,521.8	4,140.0	1,167.2	3,011.5	2,668.8	1,434.7	18,804.0	1,286.6	1,203.0	-104.0	<b>21,189.6</b>
<b>Q2</b>	370.6	3,561.6	1,271.4	106.2	1,558.3	4,153.7	1,206.6	3,021.3	2,853.2	1,446.8	19,549.6	1,238.1	1,201.1	-101.6	<b>21,887.2</b>
<b>Q3</b>	360.1	3,442.9	1,322.4	60.3	1,573.7	4,328.9	1,246.2	3,119.2	2,842.8	1,473.2	19,769.9	1,286.9	1,225.4	-103.7	<b>22,178.5</b>
<b>Q4</b>	363.4	3,620.2	1,360.7	53.2	1,580.9	4,310.5	1,234.6	3,139.1	2,714.6	1,488.6	19,865.7	1,334.2	1,215.2	-101.0	<b>22,314.2</b>
<b>2015 Q1</b>	353.6	3,290.4	1,285.9	93.4	1,596.4	4,077.0	1,215.4	3,110.3	2,863.1	1,499.7	19,385.3	1,299.4	1,196.4	-105.4	<b>21,775.6</b>
<b>Q2</b>	374.8	3,273.0	1,346.2	48.3	1,619.8	3,966.1	1,250.2	3,151.5	2,867.2	1,506.7	19,403.9	1,303.2	1,221.0	-105.9	<b>21,822.1</b>
<b>Q3</b>	358.4	2,048.1	1,350.0	73.8	1,627.5	4,065.8</									

**Table 4: Percentage Change in Gross Value Added by Kind of Economic Activity at constant 2006 Prices**

Calendar year	Agriculture	Mining	Manufacturing	Water & Electricity	Construction	Trade, Hotels & Restaurants	Transport & Communication	Finance & Business Service	General Government	Social & Personal Services	Value Added	Taxes on Import	Other Taxes on products	Subsidies	Total GDP
2005	-2.5	8.3	1.8	-14.1	-1.2	3.8	14.0	1.4	-1.1	18.6	4.4	11.1	-0.9	9.0	<b>4.6</b>
2006	13.3	5.1	20.0	3.0	15.9	27.4	13.8	4.9	-2.2	13.8	8.7	7.1	3.8	12.6	<b>8.4</b>
2007	12.2	-4.8	25.7	-4.9	23.2	15.2	15.4	11.2	5.6	8.2	6.5	24.3	25.6	12.8	<b>8.3</b>
2008	2.0	0.3	-2.6	6.6	0.8	18.0	10.2	11.7	0.2	15.2	5.5	4.1	24.7	7.8	<b>6.2</b>
2009	6.4	-42.4	5.0	-5.2	12.3	3.9	14.8	1.5	2.8	11.3	-9.1	-9.7	20.0	6.5	<b>-7.7</b>
2010	5.8	20.4	3.9	12.0	3.6	9.3	6.4	11.5	7.5	6.2	10.2	-8.1	2.1	-4.2	<b>8.6</b>
2011	0.2	-6.5	11.4	-34.2	23.1	13.8	6.1	7.7	6.3	8.3	6.1	9.5	2.1	-0.7	<b>6.0</b>
2012	-8.5	-5.8	3.7	-27.5	14.4	6.8	10.9	9.1	2.8	10.7	4.5	7.5	1.4	3.1	<b>4.5</b>
2013	1.3	24.2	6.5	67.5	4.1	16.0	7.6	8.7	6.0	8.0	11.8	12.8	2.7	7.3	<b>11.3</b>
2014	-0.4	0.5	0.5	-55.8	3.7	10.7	9.8	2.7	4.6	4.2	4.1	5.3	4.4	3.8	<b>4.1</b>
2015	0.3	-19.6	3.2	7.0	4.0	-3.9	4.5	4.5	3.3	3.6	-2.0	0.6	2.0	3.5	<b>-1.7</b>
2016	0.6	-3.5	1.6	95.2	4.2	13.4	6.6	3.3	2.4	3.5	4.8	-0.4	0.8	3.2	<b>4.3</b>
2017	2.2	-11.1	2.2	39.9	3.5	9.0	4.7	4.1	1.5	2.8	2.8	3.6	3.8	1.4	<b>2.9</b>
2018	2.9	7.4	3.6	21.0	3.7	3.2	6.4	5.0	3.0	3.6	4.5	2.9	5.8	6.1	<b>4.5</b>
2005 Q1	20.9	14.2	-0.8	-14.0	-7.3	-2.9	6.6	0.4	-0.9	14.9	4.6	30.0	-2.2	1.7	<b>5.5</b>
Q2	-21.3	22.0	1.2	-10.7	0.5	-0.3	16.2	2.1	-5.7	19.8	6.9	-10.3	-2.6	8.9	<b>5.4</b>
Q3	7.1	0.1	6.4	-13.9	-2.8	5.2	18.5	2.5	-2.7	20.3	2.1	-10.9	85.1	12.6	<b>3.3</b>
Q4	-8.5	2.5	0.6	-17.2	5.8	13.4	14.8	0.7	5.0	19.6	4.5	41.3	-40.5	12.7	<b>4.2</b>
2006 Q1	26.5	20.4	20.6	1.7	10.3	32.0	16.1	8.7	-4.7	18.0	15.0	-2.0	-14.2	16.0	<b>12.2</b>
Q2	-15.9	5.6	17.0	2.5	11.1	26.7	20.2	9.0	4.5	15.5	9.7	17.6	19.0	13.1	<b>10.4</b>
Q3	16.1	1.2	18.4	4.0	30.5	27.2	7.7	3.7	-1.1	12.8	7.5	44.2	-14.2	11.4	<b>8.2</b>
Q4	35.3	-3.0	23.8	3.9	11.7	24.0	12.1	-1.2	-7.0	9.2	3.5	-17.1	49.1	10.3	<b>3.3</b>
2007 Q1	-2.9	-1.5	24.8	-0.2	16.9	12.9	11.4	14.1	9.8	3.9	7.3	2.3	-5.0	9.4	<b>6.5</b>
Q2	68.3	-3.0	40.6	0.4	25.2	18.5	17.4	12.2	5.4	7.1	9.7	33.5	32.9	12.4	<b>11.9</b>
Q3	8.6	-9.3	24.2	-6.8	10.1	12.3	17.7	11.8	4.8	10.5	3.8	22.4	44.6	14.1	<b>6.3</b>
Q4	-16.7	-4.9	14.8	-12.6	42.9	17.2	15.0	6.8	2.8	11.3	5.6	37.6	36.0	15.2	<b>8.6</b>
2008 Q1	-9.1	4.1	-4.1	-2.5	14.6	17.7	15.8	-3.9	-6.4	19.3	4.4	35.5	27.5	10.9	<b>6.9</b>
Q2	-1.7	2.9	-1.2	1.1	2.7	17.2	8.5	12.6	0.4	12.5	6.1	-2.8	20.7	8.0	<b>6.1</b>
Q3	-3.9	8.2	-1.5	9.1	-1.7	21.0	8.3	8.8	2.3	12.1	7.8	-3.4	27.0	6.6	<b>7.9</b>
Q4	38.7	-13.7	-3.7	19.9	-9.9	16.2	8.6	31.2	4.3	17.2	3.6	-3.8	23.7	6.2	<b>4.1</b>
2009 Q1	23.4	-57.2	15.9	-9.0	7.7	7.1	11.1	15.5	12.0	11.6	-10.7	-15.2	24.1	8.1	<b>-9.5</b>
Q2	-10.8	-40.5	2.0	-4.5	14.3	8.8	11.6	0.9	0.8	14.7	-8.5	-12.0	23.2	7.6	<b>-7.3</b>
Q3	2.9	-46.5	-4.3	-7.4	19.7	4.5	16.9	-3.6	0.3	12.7	-12.0	-9.4	16.2	6.4	<b>-10.4</b>
Q4	17.4	-22.0	7.6	-0.6	7.8	-4.4	19.2	-4.8	-0.5	6.4	-4.8	-2.3	17.8	4.2	<b>-3.4</b>
2010 Q1	-4.8	56.6	-3.9	36.9	-1.4	2.9	7.3	5.5	7.7	5.9	12.2	-2.3	8.9	-7.4	<b>11.2</b>
Q2	20.0	6.8	-1.5	9.1	-6.0	5.2	7.7	13.1	4.4	7.5	6.0	-10.3	8.9	-5.3	<b>5.3</b>
Q3	2.2	32.8	11.2	12.7	4.2	12.2	7.2	14.3	8.3	5.7	14.0	-9.3	-2.1	-3.2	<b>11.5</b>
Q4	6.7	-1.6	10.8	-6.2	18.3	17.3	3.9	13.2	9.8	5.8	8.7	-10.0	-5.2	-1.1	<b>6.5</b>
2011 Q1	-1.2	-4.0	12.9	-36.6	22.9	24.0	9.8	10.1	-0.4	4.3	7.4	-21.7	10.0	11.6	<b>6.0</b>
Q2	-10.3	6.6	7.2	-30.0	25.9	8.4	6.7	4.1	6.5	3.6	6.6	30.6	8.7	-11.2	<b>8.1</b>
Q3	-4.0	-16.1	11.2	-42.4	22.5	7.2	4.1	7.6	2.2	9.0	1.7	23.3	-13.6	3.2	<b>1.8</b>
Q4	19.1	-10.4	14.0	-27.1	21.4	16.4	3.9	9.0	16.3	16.5	8.8	6.7	3.8	-4.9	<b>8.5</b>
2012 Q1	4.4	-2.9	9.9	12.9	20.1	1.6	11.1	6.8	13.7	9.9	6.6	35.4	-8.1	-2.6	<b>6.8</b>
Q2	-7.7	-5.8	6.9	-41.2	21.5	9.9	13.3	9.1	-0.3	14.4	5.4	-13.4	-8.0	11.1	<b>3.3</b>
Q3	-9.5	-23.7	3.6	-22.7	10.0	11.9	10.0	13.4	-0.6	10.4	2.0	-1.2	23.4	2.8	<b>2.9</b>
Q4	-19.0	10.0	-4.5	-59.3	7.6	4.2	9.2	7.3	-0.4	8.3	4.0	20.8	2.2	2.1	<b>4.8</b>

**Table 4 Continued : Percentage Change in Gross Value Added by Kind of Economic Activity at constant 2006 Prices**

Calendar year	Agriculture	Mining	Manufacturing	Water & Electricity	Construction	Trade, Hotels & Restaurants	Transport & Communication	Finance & Business Service	General Government	Social & Personal Services	Value Added	Taxes on Import	Other Taxes on products	Subsidies	Total GDP
2013 Q1	-5.0	5.0	-0.7	22.6	4.4	13.0	5.3	14.9	9.1	10.9	8.6	29.8	8.9	9.0	<b>9.8</b>
Q2	3.4	30.8	10.2	128.0	4.5	12.1	5.7	9.6	6.9	8.1	13.1	15.1	2.3	4.0	<b>12.6</b>
Q3	3.5	46.5	9.2	149.6	3.7	17.9	8.9	5.0	6.5	6.1	14.9	5.9	-0.4	7.2	<b>13.4</b>
Q4	3.7	19.9	7.7	-19.2	3.7	20.7	10.3	5.7	1.9	7.1	10.7	4.1	0.5	8.7	<b>9.7</b>
2014 Q1	0.3	4.7	-1.7	-61.7	2.5	14.6	9.3	-1.0	-2.7	4.0	3.4	2.7	3.3	5.4	<b>3.3</b>
Q2	0.0	-6.7	-1.7	-44.0	3.6	14.3	11.3	2.5	11.6	4.4	4.1	8.8	8.3	7.4	<b>4.6</b>
Q3	-3.2	5.7	0.2	-74.0	4.5	9.0	10.1	5.6	12.9	4.9	5.9	9.0	4.7	4.3	<b>6.0</b>
Q4	1.5	-0.2	5.0	11.5	4.2	5.6	8.3	3.5	-2.1	3.5	2.9	1.4	1.3	-1.4	<b>2.7</b>
2015 Q1	1.3	2.0	6.6	18.6	4.9	-1.5	4.1	3.3	7.3	4.5	3.1	1.0	-0.6	1.3	<b>2.8</b>
Q2	1.1	-8.1	5.9	-54.5	3.9	-4.5	3.6	4.3	0.5	4.1	-0.7	5.3	1.7	4.3	<b>-0.3</b>
Q3	-0.5	-40.5	2.1	22.4	3.4	-6.1	5.0	4.3	2.1	2.9	-6.4	2.1	3.0	3.6	<b>-5.4</b>
Q4	-0.7	-30.4	-1.1	95.4	3.6	-3.5	5.4	6.1	3.5	3.0	-3.8	-5.7	3.7	4.9	<b>-3.6</b>
2016 Q1	-1.8	-5.5	-0.4	38.8	3.4	5.5	7.1	5.1	1.6	3.5	2.4	1.1	1.5	1.8	<b>2.3</b>
Q2	-1.4	-13.6	1.1	235.1	4.6	20.2	5.5	3.1	2.5	3.5	4.4	-1.9	2.8	2.8	<b>3.9</b>
Q3	4.0	18.6	2.6	18.9	4.2	16.3	6.2	2.6	2.2	4.1	7.9	-2.6	1.2	3.6	<b>6.9</b>
Q4	1.6	-5.9	2.8	135.1	4.7	11.9	7.4	2.6	3.2	2.9	4.8	1.9	-2.3	4.8	<b>4.3</b>
2017 Q1	2.9	-28.9	0.4	2.5	4.0	18.2	4.4	4.4	0.8	2.1	1.1	-0.6	-1.5	3.3	<b>0.9</b>
Q2	1.1	-13.4	0.3	58.8	3.3	1.2	6.0	4.5	0.9	2.8	0.7	4.5	0.1	1.9	<b>0.8</b>
Q3	2.0	3.3	3.6	145.6	3.5	0.5	4.5	3.7	1.4	2.7	3.1	5.5	7.2	-0.1	<b>3.5</b>
Q4	2.6	0.2	4.3	9.1	3.3	17.0	3.8	3.7	3.0	3.5	6.3	5.2	9.1	0.5	<b>6.4</b>
2018 Q1	3.1	12.1	4.6	92.8	3.5	-2.0	6.5	4.9	2.4	3.6	4.0	7.2	10.4	2.8	<b>4.5</b>
Q2	3.0	7.4	3.7	2.9	4.1	9.0	6.0	5.2	2.7	3.3	5.6	2.3	1.6	5.3	<b>5.2</b>
Q3	3.1	-2.7	2.5	24.6	3.9	6.9	5.9	5.1	3.2	3.7	4.1	1.0	5.2	7.8	<b>4.0</b>
Q4	2.4	13.9	3.6	-0.2	3.3	-0.2	7.1	4.9	3.8	3.7	4.2	1.4	6.3	8.3	<b>4.1</b>
2019 Q1	2.6	3.3	4.1	3.8	2.7	5.7	5.9	5.3	3.1	3.6	4.4	1.6	5.8	8.5	<b>4.3</b>
Q2	-0.4	-7.9	3.5	3.1	3.0	5.7	5.5	5.8	4.0	3.1	3.1	2.2	5.5	6.4	<b>3.1</b>



**Table 5: Gross Domestic Product by Type of Expenditure at Current Prices (P million)**

Calendar year	Government Final Consumption			Non-Profit Institutions	Household Final Consumption			Gross Fixed Capital Formation					Change in Inventories				Gross Domestic Expenditure	Exports			Imports			Errors & Omissions	Total GDP
	Central Govt	Local Govt	Total		Household Consumption (Mkt)	Household Consumption (Non-Mkt)	Total	Construction	Machinery & Equipment	Transport Equipment	Mineral Prospecting	Total	Livestock	Minerals	Others	Total		Goods	Services	Total	Goods	Services	Total		
2004	7,311.3	1,319.8	8,631.1	796.4	13,795.9	2,132.5	16,724.8	6,937.7	3,531.7	1,019.8	214.4	11,703.7	87.8	1,986.6	930.2	3,004.6	40,064.1	17,344.6	3,511.3	20,855.9	13,475.6	3,920.8	17,396.4	-1,487.0	42,036.6
2005	8,361.6	1,484.7	9,846.3	1,013.0	16,096.4	2,230.5	19,340.0	8,035.7	3,624.8	950.4	249.7	12,860.5	74.1	32.9	829.2	936.3	42,983.0	22,708.3	4,151.5	26,859.8	13,729.2	4,329.3	18,058.5	-1,032.1	50,752.2
2006	8,502.4	1,568.1	10,070.5	1,217.0	19,222.9	2,452.8	22,892.7	9,930.8	4,095.6	1,159.8	300.5	15,486.6	160.7	391.2	828.2	1,380.1	49,830.0	26,386.1	4,499.9	30,886.0	15,283.9	4,859.8	20,143.7	-1,465.4	59,106.9
2007	9,989.2	1,826.2	11,815.4	1,335.0	22,220.5	3,066.7	26,622.2	11,421.2	5,515.0	1,768.0	357.2	19,061.5	217.9	-775.7	1,357.0	799.2	58,298.3	31,692.0	4,917.0	36,609.0	21,228.0	6,028.3	27,256.3	-498.3	67,152.7
2008	12,936.1	2,270.6	15,206.6	1,147.1	27,967.0	3,815.0	32,929.1	12,052.9	8,122.2	2,430.4	246.1	22,851.6	184.0	6,185.2	1,922.6	8,291.8	79,279.1	32,757.0	1,371.0	34,128.0	35,330.0	2,809.0	38,139.0	-547.2	74,720.9
2009	12,971.2	2,521.7	15,492.9	1,217.0	32,077.5	3,929.1	37,223.5	14,587.8	8,077.9	2,665.8	313.9	25,645.5	191.8	-5,402.1	2,214.8	-2,995.5	75,366.4	23,866.0	1,699.6	25,565.6	33,346.0	4,770.0	38,116.0	10,646.4	73,462.4
2010	14,363.6	2,798.3	17,162.0	1,335.0	37,195.1	4,161.9	42,692.1	16,852.9	9,484.8	2,510.7	353.2	29,201.5	253.8	1,491.1	2,109.3	3,854.2	92,909.7	31,237.0	6,668.0	37,905.0	38,035.0	6,497.0	44,532.0	584.7	86,867.4
2011	16,592.9	2,814.4	19,407.3	1,464.6	42,755.9	4,408.6	48,629.1	19,364.4	10,907.5	2,962.6	406.1	33,640.6	1.3	1,576.1	2,001.1	3,578.5	105,255.5	44,043.0	8,395.0	52,438.0	48,821.0	7,443.0	56,264.0	3,550.4	104,979.9
2012	18,342.9	2,852.7	21,195.6	1,995.2	50,789.5	4,315.5	57,100.3	23,308.9	12,601.9	3,437.1	455.5	39,803.5	187.6	-610.1	2,460.8	2,038.3	120,137.6	45,886.0	8,226.0	54,112.0	61,074.0	6,391.0	67,465.0	3,085.8	109,870.4
2013	20,005.4	3,209.3	23,214.7	2,154.9	57,512.1	5,442.5	65,109.5	26,629.9	12,316.1	2,408.1	571.0	41,925.1	-261.6	-4,752.3	-103.3	-5,117.2	125,132.2	66,563.7	10,437.0	77,000.7	68,902.2	7,483.1	76,385.3	-589.2	125,158.3
2014	25,343.8	3,733.9	29,077.7	2,308.3	60,279.5	5,887.0	68,474.7	28,775.8	12,346.4	2,697.1	613.3	44,432.7	165.0	-417.1	-3,047.0	-3,299.1	138,686.0	76,447.6	8,837.1	85,284.7	69,794.6	11,042.8	80,837.4	2,735.3	145,868.6
2015	26,034.1	4,022.6	30,056.7	2,460.1	67,187.3	6,337.2	75,984.5	31,329.6	15,132.9	2,532.9	648.0	49,643.4	1,485.7	2,825.6	-6,332.5	-2,021.2	153,663.5	63,692.8	9,238.5	72,931.3	70,639.8	11,331.5	81,971.3	1,442.7	146,066.2
2016	27,313.3	3,719.5	31,032.9	2,662.5	71,124.1	6,936.8	80,723.4	34,784.0	15,116.2	2,397.1	688.5	52,985.8	69.4	-2,037.2	-4,911.4	-6,879.2	157,862.9	80,261.3	9,279.7	89,541.0	64,282.2	11,109.0	75,391.2	-1,449.1	170,563.6
2017	29,328.3	3,861.8	33,190.1	2,864.8	78,841.4	7,077.9	88,784.1	37,777.4	11,945.4	1,988.2	722.4	52,433.4	1,312.5	-117.3	-3,862.0	-2,666.7	171,740.9	62,009.2	9,762.1	71,771.3	53,290.3	11,217.9	64,508.2	1,098.0	180,102.1
2018	31,193.2	4,229.6	35,422.7	3,036.7	83,779.8	7,368.7	94,185.3	41,366.3	13,022.0	2,399.6	761.7	57,549.6	-1,279.2	468.1	-709.0	-1,520.1	185,637.5	67,205.0	10,377.3	77,582.4	62,239.3	11,798.8	74,038.1	686.8	189,868.5
2004Q1	1,845.5	354.9	2,200.4	181.5	3,317.9	466.8	3,966.2	1,640.7	785.6	286.9	51.0	2,764.2	21.3	418.6	359.0	798.8	9,729.7	4,182.0	1,046.3	5,228.3	2,846.0	1,095.1	3,941.1	-763.6	10,253.3
Q2	1,753.4	316.7	2,070.1	192.8	3,394.3	433.5	4,020.6	1,686.8	957.3	243.1	52.4	2,939.6	39.0	-1,196.3	349.9	-807.4	8,222.9	3,625.7	595.8	4,221.5	3,411.2	886.8	4,298.0	926.8	9,073.2
Q3	1,883.2	314.1	2,197.3	204.7	3,369.4	647.1	4,221.2	1,780.3	866.1	259.1	55.0	2,960.5	16.9	1,547.6	116.8	1,681.3	11,060.4	4,946.5	677.0	5,623.5	3,481.0	1,051.5	4,532.5	-674.6	11,476.8
Q4	1,829.1	334.2	2,163.3	217.4	3,714.3	585.0	4,516.7	1,829.9	922.6	230.8	56.0	3,039.3	10.7	1,216.6	104.6	1,331.8	11,051.2	4,590.4	1,192.2	5,782.6	3,737.4	887.3	4,624.7	-975.6	11,233.4
2005Q1	2,298.6	406.0	2,704.6	230.9	3,992.9	458.6	4,682.4	1,879.0	899.1	357.2	53.4	3,188.8	12.2	-592.4	218.5	-361.6	10,214.2	5,538.7	1,168.1	6,706.8	3,363.9	1,239.0	4,602.9	25.0	12,343.1
Q2	1,802.4	318.2	2,120.6	245.2	3,694.1	571.8	4,511.1	1,931.6	830.2	185.4	50.9	2,998.2	15.7	-146.0	184.2	53.9	9,683.7	4,871.5	536.7	5,408.2	3,251.0	994.0	4,245.0	279.7	11,126.7
Q3	1,973.4	353.2	2,326.6	260.4	4,085.9	603.9	4,950.1	2,083.3	935.0	207.4	68.0	3,293.7	30.7	619.1	189.2	839.0	11,409.4	7,020.6	961.4	7,982.0	3,289.8	1,034.3	4,324.2	-879.6	14,187.7
Q4	2,287.2	407.3	2,694.5	276.5	4,323.5	596.3	5,196.4	2,141.7	960.5	200.3	77.3	3,379.8	15.5	152.2	237.2	405.0	11,675.6	5,277.5	1,485.3	6,762.8	3,824.5	1,062.0	4,886.4	-457.3	13,094.7
2006Q1	1,970.0	374.1	2,344.2	293.7	4,531.2	412.8	5,237.6	2,394.5	828.8	270.9	66.6	3,560.8	31.6	257.4	199.0	488.0	11,630.6	6,028.7	1,269.1	7,297.8	3,158.9	1,298.3	4,457.2	-469.2	14,002.0
Q2	1,963.6	375.1	2,338.8	299.0	4,323.7	703.5	5,326.1	2,461.6	964.0	262.0	65.6	3,753.2	25.8	-1,081.5	185.3	-870.3	10,547.8	6,090.1	649.3	6,739.4	3,925.3	1,080.4	5,005.8	928.4	13,209.9
Q3	2,202.5	402.2	2,604.8	316.9	5,246.7	630.4	6,194.0	2,569.3	1,106.0	293.0	84.6	4,052.9	59.3	1,623.9	248.6	1,931.8	14,783.5	6,214.5	924.3	7,138.8	4,023.7	1,345.3	5,369.0	-337.5	16,215.7
Q4	2,366.2	416.6	2,782.9	307.4	5,121.3	706.2	6,134.9	2,505.4	1,196.8	333.9	83.7	4,119.7	44.0	-408.6	195.3	-169.3	12,868.1	8,052.8	1,657.2	9,710.0	4,175.9	1,135.8	5,311.7	-1,587.1	15,679.3
2007Q1	2,494.9	435.4	2,930.4	304.3	4,680.0	733.3	5,717.7	2,661.9	1,074.2	380.3	82.5	4,198.8	49.9	-474.7	185.3	-239.5	12,607.4	8,956.0	1,397.0	10,353.0	4,192.0	1,697.0	5,889.0	-1,337.5	15,733.9
Q2	2,367.2	437.2	2,804.4	312.7	5,186.7	728.0	6,227.4	2,769.6	1,285.8	488.6	84.9	4,628.8	69.9	-360.6	189.6	-101.1	13,559.6	7,693.0	649.0	8,342.0	5,160.0	1,197.0	6,357.0	229.8	15,774.4
Q3	2,549.9	475.9	3,025.9	359.6	5,997.3	731.7	7,088.6	2,939.9	1,644.1	492.0	95.6	5,171.7	62.1	1,418.7	478.3	1,959.1	17,245.2	8,923.0	1,369.0	10,292.0	5,395.0	1,549.3	6,944.3	-2,078.7	18,514.2
Q4	2,577.2	477.6	3,054.7	358.5	6,356.5	873.5	7,588.6	3,049.8	1,510.9	407.1	94.3	5,062.1	36.0	-1,359.1	503.8	-819.2	14,886.1	6,120.0	1,502.0	7,622.0	6,481.0	1,585.0	8,066.0	2,688.0	17,130.1
2008Q1	3,253.2	546.6	3,799.7	334.9	5,704.2	803.7	6,842.8	2,831.3	1,990.9	526.2	68.1	5,416.4	36.0	1,233.5	559.5	1,829.0	17,888.0	9,018.0	367.0	9,385.0	7,505.0	650.0	8,155.0	-1,633.4	17,484.6
Q2	3,087.6	558.5	3,646.0	379.8	6,463.1	966.4	7,809.3	2,913.9	1,956.4	621.5	56.1	5,547.9	43.0	-277.0	521.0	287.1	17,290.4	8,259.0	357.0	8,616.0	8,835.0	676.0	9,511.0	891.6	17,286.9
Q3	3,088.1	559.3	3,647.4	209.7	8,073.8	975.2	9,258.7	3,174.0	1,884.8	590.7	64.4	5,713.9	49.3	323.1	402.7	775.1	19,395.1	10,776.0	265.0	11,041.0	9,677.0	651.0	10,328.0	40.8	20,148.9
Q4	3,507.2	606.2	4,113.5	222.7	7,725.8	1,069.8	9,018.3	3,133.7	2,290.0	692.0	57.6	6,173.4	55.7	4,905.5	439.3	5,400.5	24,705.7	4,704.0	382.0	5,086.0	9,313.0	832.0	10,145.0	153.8	19,800.4
2009Q1	3,235.4	620.2	3,855.6	307.8	7,103.8	904.6	8,316.1	3,311.1	1,865.6	802.8	62.4	6,041.9	51.4	-3,994.9	679.4	-3,264.1	14,949.4	3,886.0	317.6	4,203.6	7,736.0	1,096.0	8,832.0	6,274.9	16,596.0
Q2	3,443.0	653.7	4,096.7	296.0	6,924.3	1,162.2	8,382.4	3,723.9	2,106.8	568.1	79.2	6,478.1	46.4	-84.3	444.6	406.7	19,363.9	6,590.0	633.0	7,223.0	8,001.0	1,295.0	9,296.0	1,440.6	18,731.5
Q3	3,033.0	608.5	3,641.5	310.4	9,134.0	933.3	10,377.7	4,025.5	1,930.9	495.8	90.9	6,543.1	44.0	-1,583.9	409.0	-1,130.9	19,431.4	6,825.0	359.0	7,184.0	8,422.0	1,050.0	9,472.0	1,328.5	18,471.9
Q4	3,259.8	639.2	3,899.1	302.8	8,915.5	929.0	10,147.3	3,527.2	2,174.6	799.2	81.4	6,582.4	50.1	261.1	681.7	992.9	21,621.6	6,565.0	390.0	6,955.0	9,187.0	1,329.0	10,516.0	1,602.4	19,663.0
2010Q1	3,448.5	671.6	4,120.1																						

Table 5 Continued: Gross Domestic Product by Type of Expenditure at Current Prices (P million)

Calendar year	Government Final Consumption			Non-Profit Institutions	Household Final Consumption			Gross Fixed Capital Formation					Change in Inventories				Gross Domestic Expenditure	Exports			Imports			Errors & Omissions	Total GDP
	Central Govt	Local Govt	Total		Household Consumption (Mkt)	Household Consumption (Non-Mkt)	Total	Construction	Machinery & Equipment	Transport Equipment	Mineral Prospecting	Total	Livestock	Minerals	Others	Total		Goods	Services	Total	Goods	Services	Total		
2012 Q1	4,371.3	707.4	<b>5,078.8</b>	479.9	9,325.5	1,116.2	<b>10,921.7</b>	5,712.3	3,053.4	836.4	118.8	<b>9,720.9</b>	45.4	-557.0	637.8	<b>126.3</b>	25,847.7	9,783.0	1,975.0	<b>11,758.0</b>	12,823.0	1,521.0	<b>14,344.0</b>	2,782.4	<b>26,044.1</b>
Q2	4,931.2	711.3	<b>5,642.5</b>	489.3	13,148.6	1,048.1	<b>14,686.0</b>	5,372.4	3,251.4	961.2	93.9	<b>9,678.8</b>	50.2	-30.5	578.1	<b>597.8</b>	30,605.2	10,414.0	2,014.0	<b>12,428.0</b>	12,903.0	1,648.0	<b>14,551.0</b>	-756.1	<b>27,726.0</b>
Q3	4,470.0	710.5	<b>5,180.5</b>	519.9	13,589.5	1,002.9	<b>15,112.3</b>	5,906.6	3,146.8	832.8	119.7	<b>10,005.9</b>	60.9	160.2	641.4	<b>862.5</b>	31,161.2	13,556.0	1,961.0	<b>15,517.0</b>	19,499.0	1,925.0	<b>21,424.0</b>	2,287.6	<b>27,541.9</b>
Q4	4,570.3	723.5	<b>5,293.8</b>	506.1	14,725.9	1,148.3	<b>16,380.3</b>	6,317.7	3,150.3	806.8	123.1	<b>10,397.8</b>	31.1	-182.9	603.4	<b>451.6</b>	32,523.6	12,133.0	2,276.0	<b>14,409.0</b>	15,849.0	1,297.0	<b>17,146.0</b>	-1,228.1	<b>28,558.5</b>
2013 Q1	4,838.4	750.8	<b>5,589.2</b>	518.3	13,874.7	1,218.7	<b>15,611.7</b>	6,497.2	2,509.3	586.0	140.5	<b>9,733.1</b>	-139.3	-4,500.8	718.1	<b>-3,922.0</b>	27,011.9	16,867.8	2,151.0	<b>19,018.8</b>	15,728.2	1,834.2	<b>17,562.4</b>	-43.5	<b>28,424.8</b>
Q2	4,954.5	775.4	<b>5,729.9</b>	535.7	13,617.2	1,541.2	<b>15,694.0</b>	6,637.0	3,293.9	716.9	142.1	<b>10,789.9</b>	-69.1	-304.8	1,374.8	<b>1,000.9</b>	33,214.7	14,739.4	2,675.0	<b>17,414.4</b>	17,067.0	2,010.0	<b>19,077.0</b>	908.9	<b>32,461.0</b>
Q3	5,071.0	807.3	<b>5,878.3</b>	545.5	14,503.8	1,330.7	<b>16,379.9</b>	6,650.2	3,176.6	480.2	143.5	<b>10,450.4</b>	-30.3	-197.2	-2,420.8	<b>-2,648.3</b>	30,060.3	19,550.4	2,792.0	<b>22,342.4</b>	17,130.8	1,996.3	<b>19,127.2</b>	-1,610.1	<b>31,665.4</b>
Q4	5,141.5	875.8	<b>6,017.3</b>	555.5	15,516.5	1,351.9	<b>17,423.9</b>	6,845.6	3,336.2	625.0	144.9	<b>10,951.8</b>	-22.9	250.5	224.6	<b>452.2</b>	34,845.2	15,406.1	2,819.0	<b>18,225.1</b>	18,976.1	1,642.6	<b>20,618.8</b>	155.5	<b>32,607.1</b>
2014 Q1	6,001.4	891.3	<b>6,892.7</b>	565.3	14,172.2	1,363.5	<b>16,101.1</b>	6,994.6	3,189.6	626.6	149.2	<b>10,960.1</b>	-46.8	-120.9	70.0	<b>-97.6</b>	33,856.2	17,273.7	2,121.8	<b>19,395.5</b>	17,513.1	2,763.4	<b>20,276.5</b>	1,539.0	<b>34,514.3</b>
Q2	6,406.4	929.8	<b>7,336.2</b>	573.2	14,365.1	1,488.1	<b>16,426.4</b>	7,220.8	2,977.9	720.1	151.8	<b>11,070.7</b>	-21.2	-295.5	-498.4	<b>-815.1</b>	34,018.2	21,037.3	2,085.9	<b>23,123.2</b>	17,907.1	2,650.7	<b>20,557.7</b>	1,142.0	<b>37,725.7</b>
Q3	6,495.9	956.7	<b>7,452.5</b>	580.8	15,515.3	1,524.7	<b>17,620.8</b>	7,250.6	2,392.8	686.7	153.6	<b>10,483.7</b>	54.1	189.0	-1,609.3	<b>-1,366.2</b>	34,190.7	19,808.3	2,273.8	<b>22,082.2</b>	17,245.3	2,654.0	<b>19,899.2</b>	-217.9	<b>36,155.8</b>
Q4	6,440.1	956.2	<b>7,396.3</b>	589.0	16,226.9	1,510.6	<b>18,326.5</b>	7,309.8	3,786.1	663.7	158.6	<b>11,918.2</b>	179.0	-189.8	-1,009.3	<b>-1,020.1</b>	36,620.9	18,328.2	2,355.6	<b>20,683.7</b>	17,129.2	2,974.7	<b>20,103.9</b>	272.2	<b>37,472.9</b>
2015 Q1	6,334.5	981.8	<b>7,316.3</b>	596.6	15,728.1	1,540.9	<b>17,865.5</b>	7,547.4	3,267.7	578.3	163.6	<b>11,557.0</b>	353.4	89.3	-1,392.8	<b>-950.1</b>	35,788.8	19,530.4	1,930.8	<b>21,461.3</b>	17,666.8	2,860.3	<b>20,527.1</b>	-159.3	<b>36,563.6</b>
Q2	6,526.8	1,022.8	<b>7,549.6</b>	606.9	16,650.3	1,580.6	<b>18,837.8</b>	7,847.5	3,884.8	638.1	154.9	<b>12,525.2</b>	430.4	207.8	-2,400.0	<b>-1,761.8</b>	37,150.8	19,831.9	2,396.3	<b>22,228.2</b>	19,117.4	2,824.2	<b>21,941.6</b>	-93.5	<b>37,343.9</b>
Q3	6,498.8	1,021.2	<b>7,520.0</b>	620.8	16,909.9	1,586.3	<b>19,117.0</b>	7,889.4	4,155.2	637.6	161.3	<b>12,843.5</b>	409.9	782.1	460.3	<b>1,652.3</b>	41,132.8	11,853.3	2,512.2	<b>14,365.5</b>	17,452.7	2,572.1	<b>20,024.8</b>	1,822.2	<b>37,295.7</b>
Q4	6,674.0	996.8	<b>7,670.8</b>	635.8	17,899.1	1,629.5	<b>20,164.3</b>	8,045.3	3,825.2	679.0	168.2	<b>12,717.6</b>	291.9	1,746.4	-3,000.0	<b>-961.7</b>	39,591.1	12,477.0	2,399.2	<b>14,876.2</b>	16,402.9	3,074.9	<b>19,477.8</b>	-126.6	<b>34,862.9</b>
2016 Q1	6,796.6	977.4	<b>7,773.9</b>	646.1	16,826.7	1,722.0	<b>19,194.9</b>	8,315.7	3,201.5	503.6	173.4	<b>12,194.2</b>	76.5	-715.9	-1,600.0	<b>-2,239.4</b>	36,923.7	19,741.9	2,520.5	<b>22,262.4</b>	15,793.3	2,216.5	<b>18,009.8</b>	-1,537.4	<b>39,638.9</b>
Q2	7,011.0	932.0	<b>7,943.0</b>	657.6	17,063.9	1,759.6	<b>19,481.1</b>	8,598.4	3,884.7	598.5	165.7	<b>13,247.3</b>	-33.4	-178.2	-2,100.0	<b>-2,311.6</b>	38,359.8	25,416.5	2,202.7	<b>27,619.1</b>	16,529.3	4,765.1	<b>21,294.4</b>	-2,007.4	<b>42,677.1</b>
Q3	6,696.5	909.3	<b>7,605.8</b>	671.5	18,312.9	1,781.9	<b>20,766.3</b>	8,899.4	3,850.1	725.8	171.2	<b>13,646.5</b>	-37.6	-1,189.3	-1,114.3	<b>-2,341.2</b>	39,677.4	18,925.3	1,829.5	<b>20,754.8</b>	15,373.8	1,907.3	<b>17,281.1</b>	1,246.7	<b>44,397.8</b>
Q4	6,809.3	900.8	<b>7,710.1</b>	687.2	18,920.6	1,673.3	<b>21,281.1</b>	8,970.6	4,179.8	569.3	178.2	<b>13,897.8</b>	63.8	46.2	-97.0	<b>13.0</b>	42,902.0	16,177.6	2,727.0	<b>18,904.6</b>	16,585.9	2,220.0	<b>18,805.8</b>	849.0	<b>43,849.8</b>
2017 Q1	6,964.5	924.9	<b>7,889.3</b>	695.1	19,872.9	1,689.1	<b>22,257.1</b>	8,979.5	2,968.1	431.6	182.0	<b>12,561.1</b>	273.6	-158.0	-2,800.0	<b>-2,684.4</b>	40,023.1	18,047.0	2,175.6	<b>20,222.6</b>	12,349.2	2,141.7	<b>14,490.9</b>	-2,079.5	<b>43,675.3</b>
Q2	7,428.7	976.2	<b>8,404.8</b>	710.6	19,384.6	1,759.2	<b>21,854.4</b>	9,248.9	2,441.7	420.6	174.7	<b>12,286.0</b>	406.7	327.9	-512.0	<b>222.5</b>	42,767.8	15,007.7	2,458.2	<b>17,465.9</b>	12,105.9	2,973.6	<b>15,079.5</b>	-816.0	<b>44,338.1</b>
Q3	7,324.1	974.2	<b>8,298.3</b>	725.9	19,755.9	1,817.2	<b>22,298.9</b>	9,711.4	3,072.4	548.8	179.7	<b>13,512.3</b>	392.9	-363.9	-100.0	<b>-71.1</b>	44,038.4	13,279.3	2,706.4	<b>15,985.7</b>	13,065.1	3,356.6	<b>16,421.7</b>	2,273.6	<b>45,876.0</b>
Q4	7,611.1	986.5	<b>8,597.6</b>	733.2	19,828.0	1,812.5	<b>22,373.7</b>	9,837.6	3,463.2	587.2	186.0	<b>14,074.0</b>	239.4	76.8	-450.0	<b>-133.8</b>	44,911.6	15,675.3	2,421.9	<b>18,097.1</b>	15,770.0	2,746.0	<b>18,516.1</b>	1,719.9	<b>46,212.6</b>
2018 Q1	7,626.6	990.7	<b>8,617.3</b>	740.7	20,342.8	1,813.9	<b>22,897.5</b>	9,877.0	3,305.7	583.2	191.1	<b>13,957.0</b>	-54.7	28.1	550.0	<b>523.4</b>	45,995.2	13,827.7	2,167.9	<b>15,995.6</b>	14,240.2	2,492.2	<b>16,732.4</b>	509.6	<b>45,768.0</b>
Q2	7,809.0	1,014.2	<b>8,823.2</b>	750.4	20,299.8	1,857.0	<b>22,907.2</b>	10,222.7	3,086.7	576.3	186.2	<b>14,071.8</b>	-280.1	855.2	-3,517.0	<b>-2,941.9</b>	42,860.3	18,933.8	2,624.0	<b>21,557.9</b>	14,647.9	3,314.5	<b>17,962.3</b>	453.7	<b>46,909.6</b>
Q3	7,964.0	1,096.9	<b>9,060.9</b>	766.7	20,926.5	1,885.1	<b>23,578.3</b>	10,580.4	3,181.7	595.9	188.5	<b>14,546.5</b>	-434.3	-632.6	1,539.0	<b>472.1</b>	47,657.8	14,703.0	3,121.9	<b>17,824.9</b>	14,375.4	3,366.1	<b>17,741.4</b>	958.1	<b>48,699.3</b>
Q4	7,793.5	1,127.8	<b>8,921.3</b>	778.9	22,210.7	1,812.7	<b>24,802.3</b>	10,686.2	3,447.9	644.2	195.9	<b>14,974.3</b>	-510.1	217.4	719.0	<b>426.3</b>	49,124.2	19,740.5	2,463.6	<b>22,204.0</b>	18,976.0	2,626.1	<b>21,602.0</b>	-1,234.6	<b>48,491.6</b>
2019 Q1	7,907.4	1,090.3	<b>8,997.6</b>	786.7	22,244.9	1,848.2	<b>24,879.8</b>	10,729.0	3,253.8	732.2	200.6	<b>14,915.6</b>	-514.5	-64.3	-156.0	<b>-734.8</b>	48,058.3	14,800.3	2,611.2	<b>17,411.5</b>	16,142.7	2,040.9	<b>18,183.6</b>	1,564.1	<b>48,850.2</b>
Q2	8,261.5	1,226.3	<b>9,487.9</b>	796.5	22,287.5	1,905.9	<b>24,989.9</b>	10,943.6	3,405.6	667.4	191.9	<b>15,208.5</b>	-518.9	22.1	-480.0	<b>-976.8</b>	48,709.5	17,531.8	2,537.4	<b>20,069.2</b>	16,747.5	2,333.5	<b>19,081.0</b>	-456.0	<b>49,241.7</b>

Note: 2016-2019 estimates are provisional

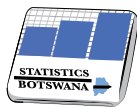
**Table 6: Gross Domestic Product by Type of Expenditure at Constant Prices (P million)**

Calendar year	Government Final Consumption			Non-Profit Institutions	Household Final Consumption			Gross Fixed Capital Formation					Change in Inventories				Gross Domestic Expenditure	Exports			Imports			Errors & Omissions	Total GDP
	Central Govt	Local Govt	Total		Household Consumption (Mkt)	Household Consumption (Non-Mkt)	Total	Construction	Machinery & Equipment	Transport Equipment	Mineral Prospecting	Total	Livestock	Minerals	Others	Total		Goods	Services	Total	Goods	Services	Total		
2004	9,695.9	1,499.1	11,195.0	837.6	14,545.3	2,242.9	17,625.7	8,757.6	4,167.6	1,064.3	225.5	14,215.1	75.9	2,294.8	978.4	3,349.1	46,385.0	21,072.7	4,265.8	25,338.5	16,328.3	4,851.9	21,180.2	1,624.5	52,167.7
2005	8,918.5	1,568.8	10,487.3	1,022.1	16,252.3	2,250.6	19,525.0	9,190.2	4,062.8	974.9	251.9	14,479.8	80.7	-1,096.2	1,236.7	221.2	44,713.3	25,319.2	4,628.6	29,947.8	15,303.7	4,831.1	20,134.8	18.5	54,544.8
2006	8,502.4	1,568.1	10,070.5	1,217.0	19,222.9	2,452.8	22,892.7	9,930.8	4,095.6	1,159.7	300.5	15,486.5	160.7	391.2	828.2	1,380.1	49,829.9	26,386.1	4,499.9	30,886.0	15,283.9	4,859.8	20,143.7	-1,465.3	59,106.9
2007	8,798.4	1,626.7	10,425.1	1,326.2	21,952.7	3,046.3	26,325.1	10,268.9	4,901.3	1,718.7	354.9	17,243.8	125.3	-710.1	1,347.9	763.1	54,757.2	28,663.8	4,841.7	33,505.6	19,411.8	5,758.8	25,170.6	907.0	63,999.1
2008	9,193.5	1,751.4	10,944.9	1,082.0	26,187.9	3,598.5	30,868.4	9,213.3	6,121.7	2,251.6	232.2	17,818.8	157.2	3,133.0	1,813.5	5,103.7	64,735.8	27,555.5	5,119.2	32,674.7	24,666.2	4,920.2	29,586.5	172.0	67,996.1
2009	9,520.5	1,748.7	11,269.2	1,076.4	28,024.6	3,475.3	32,576.3	10,779.1	6,103.4	2,349.7	277.7	19,509.9	209.3	-3,505.9	1,561.0	-1,735.6	61,619.8	18,677.1	1,688.9	20,365.9	21,737.6	4,628.8	26,366.4	7,173.4	62,792.8
2010	9,945.7	1,744.3	11,690.0	1,110.1	30,813.3	3,460.7	35,384.1	11,711.9	7,089.7	2,205.0	293.7	21,300.2	163.4	-226.9	1,753.9	1,690.5	70,064.8	22,264.8	1,364.5	23,629.3	23,305.3	4,769.8	28,075.1	2,551.1	68,170.1
2011	10,442.4	1,830.7	12,273.1	1,166.9	33,491.6	3,512.7	38,171.2	13,136.3	7,931.9	2,496.9	323.6	23,888.6	236.2	-530.5	1,594.4	1,300.2	75,633.1	28,696.4	1,441.9	30,138.2	27,882.9	5,589.6	33,472.5	-5.6	72,293.3
2012	12,229.8	1,912.5	14,142.3	1,127.5	33,673.4	2,853.2	37,654.1	14,140.5	9,782.2	2,908.3	310.1	27,141.0	217.5	1,010.9	1,615.9	2,844.2	81,781.7	30,069.2	5,445.9	35,515.1	40,012.4	4,197.3	44,209.7	2,427.7	75,514.8
2013	14,059.4	2,117.9	16,177.3	989.8	37,035.6	3,430.1	41,455.5	15,747.1	9,491.1	2,063.6	387.2	27,689.0	-106.5	-2,742.7	1,355.6	-1,493.6	83,828.1	42,371.0	6,569.7	48,940.7	43,735.9	4,901.0	48,636.8	-51.3	84,080.7
2014	15,751.2	2,171.4	17,922.7	1,029.1	37,260.6	3,518.0	41,807.7	16,364.1	9,145.1	2,193.5	393.7	28,096.4	-77.6	-569.9	-1,753.9	-2,401.3	85,425.5	45,490.6	5,279.7	50,770.3	42,723.9	7,616.9	50,340.8	1,714.5	87,569.5
2015	16,095.2	2,275.0	18,370.2	1,061.8	38,840.3	3,581.9	43,484.0	16,920.6	11,178.0	2,059.7	398.1	30,556.4	484.7	2,622.6	-2,116.7	990.6	93,401.2	36,363.5	5,215.8	41,579.3	43,627.2	8,134.8	51,762.1	2,864.2	86,082.6
2016	16,363.5	2,428.7	18,792.2	1,093.2	39,680.7	3,676.6	44,450.5	17,626.2	11,661.6	1,971.7	410.2	31,669.7	-10.5	-2,462.9	655.7	-1,817.6	93,094.8	41,951.6	4,900.8	46,852.4	40,392.6	8,588.8	48,981.4	-1,178.4	89,787.4
2017	16,572.1	2,510.0	19,082.1	1,128.8	42,643.8	3,604.6	47,377.3	18,332.4	8,608.9	1,515.7	417.0	28,873.9	492.7	77.8	-3,340.0	-2,769.5	92,563.8	34,384.7	4,970.1	39,354.7	30,273.7	8,232.7	38,506.3	-1,014.3	92,398.0
2018	17,156.2	2,573.1	19,729.3	1,170.9	44,490.8	3,667.3	49,329.1	18,979.6	10,008.5	1,802.7	428.8	31,219.6	-505.5	236.9	-2,672.0	-2,940.6	97,337.4	37,402.1	5,165.3	42,567.4	34,114.4	8,731.0	42,845.3	-546.5	96,513.0
2004Q1	2,469.8	420.1	2,889.9	197.2	3,606.9	507.5	4,311.6	2,198.2	957.4	308.4	57.4	3,521.4	19.5	-1,015.6	353.8	-642.4	10,080.6	5,246.3	1,311.1	6,557.4	3,969.3	1,550.0	5,519.3	1,055.3	12,174.0
Q2	2,282.8	356.3	2,639.2	203.1	3,584.2	457.1	4,244.4	2,204.1	1,131.4	253.5	55.9	3,644.8	32.9	1,785.1	361.8	2,179.8	12,708.1	4,411.1	724.1	5,135.2	3,890.3	1,018.4	4,908.7	-581.5	12,353.1
Q3	2,487.8	348.3	2,836.0	213.4	3,520.7	675.3	4,409.5	2,271.6	1,013.1	267.3	56.4	3,608.4	14.7	-990.3	132.7	-842.9	10,011.0	5,956.2	814.3	6,770.5	4,219.0	1,275.6	5,494.6	2,439.5	13,726.4
Q4	2,455.5	374.4	2,829.9	223.9	3,833.4	602.9	4,660.2	2,083.7	1,065.8	235.2	55.8	3,440.5	8.9	2,515.6	130.1	2,654.6	13,585.2	5,459.1	1,416.3	6,875.4	4,249.7	1,007.9	5,257.6	-1,288.9	13,914.2
2005Q1	2,637.3	455.2	3,092.5	245.7	4,241.5	488.6	4,975.8	2,240.6	1,061.0	382.2	59.4	3,743.3	13.9	-3,159.3	291.6	-2,853.9	8,957.7	6,506.6	1,376.9	7,883.4	3,850.1	1,411.9	5,262.0	1,260.4	12,839.5
Q2	1,907.2	340.8	2,247.9	251.6	3,787.2	587.3	4,626.2	2,264.6	944.5	191.3	59.6	3,460.1	17.1	1,837.6	327.2	2,181.9	12,516.1	5,517.6	609.9	6,127.5	3,784.4	1,150.6	4,935.1	-688.7	13,019.9
Q3	2,105.1	363.0	2,468.1	257.9	4,047.0	598.6	4,903.5	2,318.4	1,027.5	206.7	68.7	3,621.3	33.3	-1,946.1	291.3	-1,621.6	9,371.4	7,673.6	1,054.4	8,728.0	3,857.9	1,217.0	5,074.8	1,160.3	14,184.8
Q4	2,268.9	409.8	2,678.8	266.9	4,176.5	576.1	5,019.5	2,366.6	1,029.8	194.7	64.1	3,655.2	16.4	2,171.7	326.7	2,514.8	13,868.2	5,621.4	1,587.4	7,208.8	3,811.3	1,051.6	4,862.9	-1,713.5	14,500.6
2006Q1	2,173.8	397.2	2,571.0	302.8	4,669.8	426.7	5,399.3	2,591.2	814.0	279.5	73.3	3,758.0	33.8	794.8	199.1	1,027.7	12,755.9	6,222.0	1,309.2	7,531.2	3,344.2	1,361.2	4,705.4	-1,176.3	14,405.4
Q2	2,013.9	385.2	2,399.1	300.2	4,344.4	708.4	5,353.0	2,566.2	922.3	263.3	70.6	3,822.4	26.4	-196.4	203.9	34.0	11,608.5	6,123.0	652.5	6,775.5	3,713.0	1,018.9	4,731.9	720.2	14,372.3
Q3	2,130.6	387.3	2,517.9	312.5	5,179.1	623.3	6,114.8	2,611.3	1,140.3	289.2	77.4	4,118.1	59.7	136.3	229.3	425.3	13,176.1	6,134.3	911.9	7,046.2	4,059.6	1,357.0	5,416.6	547.4	15,353.1
Q4	2,184.1	398.4	2,582.5	301.5	5,029.6	694.5	6,025.6	2,162.1	1,219.0	327.7	79.2	3,788.0	40.7	-343.4	195.9	-106.8	12,289.3	7,906.8	1,626.4	9,533.2	4,167.1	1,122.7	5,289.8	-1,556.6	14,976.1
2007 Q1	2,275.5	401.6	2,677.0	308.7	4,843.2	749.4	5,901.3	2,272.3	1,010.9	395.2	111.8	3,790.3	33.6	-831.9	328.6	-469.7	11,898.9	8,483.5	1,336.2	9,819.7	4,022.6	1,635.4	5,657.9	-725.6	15,335.1
Q2	2,061.3	390.9	2,452.2	308.8	5,232.4	724.4	6,265.6	2,507.7	1,246.2	494.4	72.9	4,321.2	40.5	1,407.2	352.7	1,800.4	14,839.4	6,696.6	604.2	7,300.8	4,727.3	1,154.7	5,882.0	-170.3	16,088.0
Q3	2,249.6	419.4	2,669.0	354.8	5,794.4	720.7	6,869.9	2,883.9	1,278.1	391.1	86.4	4,639.4	34.2	-1,664.2	346.9	-1,283.1	12,895.3	8,417.3	1,262.2	9,679.5	4,885.1	1,471.4	6,356.5	99.3	16,317.6
Q4	2,212.0	414.9	2,626.9	353.8	6,082.7	851.7	7,288.3	2,605.0	1,366.1	438.0	83.7	4,492.9	17.0	378.8	319.6	715.4	15,123.6	5,066.4	1,639.1	6,705.5	5,776.9	1,497.4	7,274.3	1,703.6	16,258.4
2008 Q1	2,478.5	417.8	2,896.3	308.5	5,905.1	840.4	7,054.0	2,194.6	1,483.9	500.6	46.9	4,226.0	33.8	88.2	1,419.6	1,541.6	15,717.9	8,262.0	1,565.7	9,827.7	5,776.8	1,464.1	7,240.9	-1,906.8	16,397.8
Q2	2,076.3	418.9	2,495.2	250.7	6,098.8	916.9	7,266.4	2,385.1	1,528.2	577.6	59.0	4,549.8	34.8	1,265.6	-214.0	1,086.4	15,397.8	6,932.1	1,074.4	8,006.5	6,272.6	1,133.1	7,405.7	1,066.8	17,065.3
Q3	2,263.8	448.7	2,712.5	256.9	7,286.9	882.9	8,426.7	2,289.2	1,528.2	543.3	67.0	4,427.7	27.2	-1,355.5	258.8	-1,069.5	14,497.4	8,634.0	1,370.8	10,004.8	6,473.4	1,103.5	7,576.9	682.4	17,607.6
Q4	2,375.1	465.9	2,841.0	265.9	6,897.0	958.3	8,121.3	2,344.4	1,581.5	630.1	59.4	4,615.4	61.4	3,134.7	349.0	3,545.2	19,122.8	3,727.4	1,108.4	4,835.8	6,143.4	1,219.6	7,363.0	329.6	16,925.3
2009 Q1	2,648.1	460.7	3,108.8	267.8	6,591.8	814.8	7,674.5	2,600.7	1,403.8	718.2	56.1	4,778.8	42.6	-2,812.1	388.7	-2,380.8	13,181.2	3,519.0	350.2	3,869.2	5,274.9	1,133.6	6,408.5	4,201.8	14,843.7
Q2	2,231.3	420.5	2,651.8	265.6	6,033.6	1,037.4	7,336.6	2,890.8	1,617.7	503.2	70.5	5,082.2	51.8	-705.9	393.6	-260.5	14,810.2	5,021.7	504.7	5,526.3	5,409.2	1,252.9	6,662.2	2,137.2	15,811.5
Q3	2,331.6	436.7	2,768.3	276.4	7,898.3	814.4	8,989.0	2,821.6	1,442.3	434.6	80.1	4,778.6	62.4	-41.7	374.0	394.7	16,930.7	5,212.6	453.3	5,665.8	5,558.1	1,172.9	6,730.9	-82.8	15,782.8
Q4	2,309.4	430.8	2,740.3	266.7	7,501.0	808.6	8,576.3	2,466.0	1,639.6	693.7	71.0	4,870.2	52.6	53.7	404.6	511.0	16,697.7	4,923.8	380.8	5,304.6	5,495.3	1,069.4	6,564.8	917.2	16,354.8
2010 Q1	2,558.3	429.9																							

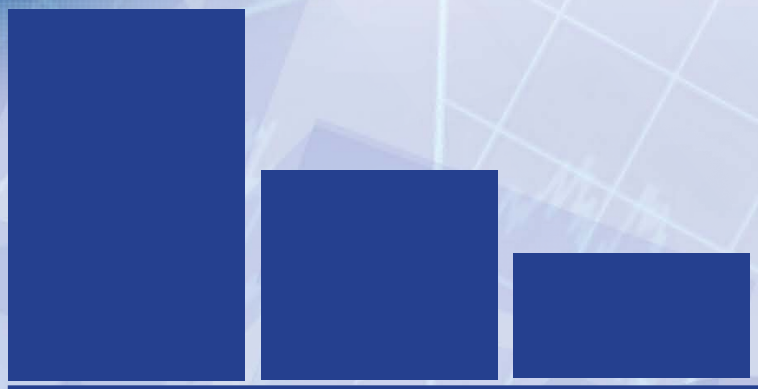
**Table 6 Continued: Gross Domestic Product by Type of Expenditure at Constant Prices (P million)**

Calendar year	Government Final Consumption			Non-Profit Institutions	Household Final Consumption			Gross Fixed Capital Formation					Change in Inventories				Gross Domestic Expenditure	Exports			Imports			Errors & Omissions	Total GDP
	Central Govt	Local Govt	Total		Household Consumption (Mkt)	Household Consumption (Non-Mkt)	Total	Construction	Machinery & Equipment	Transport Equipment	Mineral Prospecting	Total	Livestock	Minerals	Others	Total		Goods	Services	Total	Goods	Services	Total		
<b>2012 Q1</b>	2,904.7	443.3	<b>3,348.0</b>	303.2	6,879.5	753.1	<b>7,935.9</b>	3,597.6	2,187.9	719.0	80.5	<b>6,585.0</b>	60.1	377.0	430.4	<b>867.4</b>	18,736.3	6,601.2	1,332.7	<b>7,933.9</b>	8,652.5	1,026.3	<b>9,678.8</b>	1,694.2	<b>18,685.5</b>
<b>Q2</b>	2,311.6	465.1	<b>2,776.7</b>	324.8	8,661.6	711.0	<b>9,697.4</b>	3,310.9	2,438.4	751.9	64.2	<b>6,565.4</b>	64.1	-406.6	381.1	<b>38.6</b>	19,078.0	6,864.9	1,327.6	<b>8,192.5</b>	8,505.6	1,086.4	<b>9,592.0</b>	903.9	<b>18,582.4</b>
<b>Q3</b>	3,071.8	493.5	<b>3,565.3</b>	259.8	8,850.7	653.0	<b>9,763.5</b>	3,589.8	2,590.6	730.1	90.2	<b>7,000.7</b>	59.9	136.0	417.6	<b>613.5</b>	20,943.1	8,825.5	1,326.7	<b>10,152.2</b>	12,694.7	1,253.3	<b>13,947.9</b>	1,292.9	<b>18,440.3</b>
<b>Q4</b>	3,941.7	510.6	<b>4,452.3</b>	239.6	9,281.6	736.1	<b>10,257.3</b>	3,642.2	2,565.3	707.3	75.2	<b>6,990.0</b>	33.5	904.4	386.8	<b>1,324.7</b>	23,024.3	7,777.6	1,459.0	<b>9,236.5</b>	10,159.6	831.4	<b>10,991.0</b>	-1,463.3	<b>19,806.6</b>
<b>2013 Q1</b>	3,687.4	524.5	<b>4,211.8</b>	244.1	9,698.6	780.0	<b>10,722.7</b>	3,875.9	1,987.5	507.6	95.7	<b>6,466.6</b>	-47.9	-2,461.4	364.2	<b>-2,145.1</b>	19,256.0	11,238.2	1,376.5	<b>12,614.7</b>	9,985.5	1,164.5	<b>11,150.0</b>	-212.8	<b>20,508.0</b>
<b>Q2</b>	3,313.6	526.4	<b>3,840.0</b>	245.2	9,057.5	980.4	<b>10,283.1</b>	3,919.5	2,564.7	615.6	96.6	<b>7,196.3</b>	-22.9	-798.9	924.9	<b>103.1</b>	21,422.5	9,410.3	1,701.4	<b>11,111.7</b>	10,874.3	1,303.6	<b>12,178.0</b>	575.6	<b>20,931.9</b>
<b>Q3</b>	3,219.5	530.3	<b>3,749.9</b>	248.5	8,869.7	841.3	<b>9,959.5</b>	3,960.7	2,436.4	411.2	97.1	<b>6,905.4</b>	-14.1	23.2	-504.8	<b>-495.7</b>	20,119.1	11,960.5	1,764.9	<b>13,725.4</b>	10,927.0	1,326.4	<b>12,253.4</b>	-673.9	<b>20,917.2</b>
<b>Q4</b>	3,838.9	536.7	<b>4,375.5</b>	252.0	9,409.8	828.4	<b>10,490.2</b>	3,991.0	2,502.6	529.3	97.8	<b>7,120.7</b>	-21.6	494.4	571.3	<b>1,044.1</b>	23,030.4	9,761.9	1,727.0	<b>11,488.9</b>	11,949.0	1,106.5	<b>13,055.5</b>	259.8	<b>21,723.7</b>
<b>2014 Q1</b>	3,895.7	555.3	<b>4,451.0</b>	254.4	9,764.2	828.7	<b>10,847.3</b>	4,036.1	2,406.2	529.2	98.0	<b>7,069.5</b>	-45.4	-328.5	-137.5	<b>-511.3</b>	21,856.5	10,280.6	1,289.3	<b>11,569.9</b>	11,029.2	1,921.5	<b>12,950.7</b>	713.9	<b>21,189.6</b>
<b>Q2</b>	3,988.1	530.3	<b>4,518.5</b>	255.5	8,943.7	893.2	<b>10,092.4</b>	4,099.6	2,168.3	577.6	98.1	<b>6,943.5</b>	-44.5	-182.4	-715.8	<b>-942.7</b>	20,611.7	12,499.9	1,251.8	<b>13,751.7</b>	10,862.2	1,819.3	<b>12,681.5</b>	205.2	<b>21,887.2</b>
<b>Q3</b>	3,872.2	536.3	<b>4,408.5</b>	258.1	8,970.3	907.4	<b>10,135.8</b>	4,092.9	1,769.5	551.8	98.2	<b>6,512.3</b>	-19.0	426.0	-573.5	<b>-166.5</b>	20,890.1	11,939.9	1,353.0	<b>13,292.9</b>	10,444.6	1,825.6	<b>12,270.2</b>	265.7	<b>22,178.5</b>
<b>Q4</b>	3,995.2	549.5	<b>4,544.7</b>	261.2	9,582.4	888.7	<b>10,732.3</b>	4,135.5	2,801.1	534.8	99.5	<b>7,571.0</b>	31.2	-485.0	-327.1	<b>-780.8</b>	22,067.1	10,770.2	1,385.6	<b>12,155.8</b>	10,387.9	2,050.5	<b>12,438.4</b>	529.7	<b>22,314.2</b>
<b>2015 Q1</b>	3,980.7	570.3	<b>4,551.1</b>	262.9	9,914.7	892.8	<b>11,070.4</b>	4,139.6	2,403.6	462.5	102.3	<b>7,108.0</b>	106.0	53.8	-1,099.7	<b>-939.9</b>	21,789.5	11,513.9	1,118.5	<b>12,632.4</b>	10,771.8	1,974.7	<b>12,746.4</b>	100.2	<b>21,775.6</b>
<b>Q2</b>	4,044.6	559.3	<b>4,604.0</b>	264.0	9,368.4	901.2	<b>10,533.6</b>	4,231.8	2,822.9	512.6	95.4	<b>7,662.7</b>	142.0	102.5	-907.1	<b>-662.6</b>	22,137.7	11,478.8	1,366.1	<b>12,844.9</b>	11,540.1	1,973.4	<b>13,513.5</b>	352.9	<b>21,822.1</b>
<b>Q3</b>	3,953.7	569.6	<b>4,523.3</b>	266.4	9,747.5	890.3	<b>10,904.3</b>	4,273.1	3,076.9	522.9	98.4	<b>7,971.4</b>	139.2	101.1	753.4	<b>993.7</b>	24,392.7	6,474.1	1,409.8	<b>7,883.9</b>	10,857.7	1,866.1	<b>12,723.8</b>	1,417.9	<b>20,970.7</b>
<b>Q4</b>	4,116.2	575.7	<b>4,691.8</b>	268.5	9,809.7	897.5	<b>10,975.7</b>	4,276.1	2,874.5	561.7	102.0	<b>7,814.3</b>	97.5	2,365.2	-863.3	<b>1,599.3</b>	25,081.2	6,896.8	1,321.3	<b>8,218.1</b>	10,457.7	2,320.7	<b>12,778.3</b>	993.2	<b>21,514.2</b>
<b>2016 Q1</b>	4,061.9	599.6	<b>4,661.5</b>	270.4	10,170.8	926.9	<b>11,368.1</b>	4,321.1	2,519.7	412.6	104.6	<b>7,358.0</b>	16.9	-1,831.8	2,000.0	<b>185.1</b>	23,572.6	9,976.0	1,356.4	<b>11,332.4</b>	10,389.9	1,769.8	<b>12,159.7</b>	-477.8	<b>22,267.5</b>
<b>Q2</b>	4,114.5	598.5	<b>4,713.0</b>	271.9	9,333.4	933.7	<b>10,538.9</b>	4,435.8	3,132.0	501.6	99.0	<b>8,168.5</b>	-23.1	-373.6	700.0	<b>303.2</b>	23,723.6	13,312.9	1,168.6	<b>14,481.4</b>	10,591.6	3,733.5	<b>14,325.2</b>	-1,206.4	<b>22,673.5</b>
<b>Q3</b>	4,042.5	610.5	<b>4,653.1</b>	275.5	9,964.9	939.5	<b>11,179.8</b>	4,432.5	2,929.0	594.9	101.6	<b>8,058.0</b>	-22.6	-461.5	-1,655.0	<b>-2,139.1</b>	21,751.8	10,055.4	962.6	<b>11,018.0</b>	9,495.8	1,440.4	<b>10,936.2</b>	583.4	<b>22,417.0</b>
<b>Q4</b>	4,144.6	620.1	<b>4,764.7</b>	275.5	10,211.6	876.6	<b>11,363.7</b>	4,436.8	3,080.9	462.6	105.0	<b>8,085.3</b>	18.4	204.0	-389.3	<b>-166.9</b>	24,046.8	8,607.3	1,413.2	<b>10,020.5</b>	9,915.3	1,645.0	<b>11,560.3</b>	-77.5	<b>22,429.4</b>
<b>2017 Q1</b>	4,034.6	624.3	<b>4,658.8</b>	276.2	10,523.7	867.8	<b>11,667.8</b>	4,482.7	2,141.1	338.3	106.4	<b>7,068.5</b>	100.9	2.2	-2,200.0	<b>-2,096.9</b>	21,298.2	9,791.9	1,117.6	<b>10,909.5</b>	7,100.7	1,550.7	<b>8,651.5</b>	-1,092.0	<b>22,464.2</b>
<b>Q2</b>	4,198.4	627.0	<b>4,825.4</b>	280.9	10,199.2	898.8	<b>11,378.9</b>	4,600.4	1,745.9	324.5	101.4	<b>6,772.0</b>	153.2	176.4	-590.0	<b>-260.4</b>	22,716.0	8,329.1	1,255.8	<b>9,584.9</b>	6,773.7	2,162.4	<b>8,936.2</b>	-502.1	<b>22,862.6</b>
<b>Q3</b>	4,108.7	628.1	<b>4,736.7</b>	285.0	10,953.2	922.2	<b>12,160.4</b>	4,604.4	2,233.3	422.8	103.2	<b>7,363.6</b>	148.7	-242.2	-100.0	<b>-193.5</b>	24,067.3	7,456.2	1,373.2	<b>8,829.4</b>	7,519.7	2,475.9	<b>9,995.6</b>	299.3	<b>23,200.4</b>
<b>Q4</b>	4,230.5	630.6	<b>4,861.1</b>	286.7	10,967.7	915.8	<b>12,170.2</b>	4,644.9	2,488.7	430.1	106.1	<b>7,669.8</b>	89.8	141.4	-450.0	<b>-218.7</b>	24,482.4	8,807.4	1,223.5	<b>10,030.9</b>	8,879.5	2,043.6	<b>10,923.0</b>	280.4	<b>23,870.7</b>
<b>2018 Q1</b>	4,168.3	634.3	<b>4,802.6</b>	287.3	11,242.0	909.3	<b>12,438.7</b>	4,658.0	2,370.7	443.3	108.4	<b>7,580.4</b>	-23.9	29.2	-1,200.0	<b>-1,194.7</b>	23,627.0	8,233.8	1,086.4	<b>9,320.2</b>	7,677.8	1,767.3	<b>9,445.1</b>	-24.1	<b>23,478.0</b>
<b>Q2</b>	4,301.9	639.4	<b>4,941.3</b>	290.1	10,952.1	925.3	<b>12,167.4</b>	4,744.8	2,413.5	433.2	104.8	<b>7,696.3</b>	-111.0	369.8	-2,500.0	<b>-2,241.2</b>	22,563.9	10,723.9	1,310.4	<b>12,034.4</b>	8,000.1	2,416.0	<b>10,416.1</b>	-124.3	<b>24,057.9</b>
<b>Q3</b>	4,376.8	647.4	<b>5,024.2</b>	295.4	11,043.2	936.5	<b>12,275.1</b>	4,767.5	2,521.4	444.8	106.2	<b>7,839.9</b>	-170.6	-416.8	468.0	<b>-119.5</b>	25,019.7	7,913.3	1,550.6	<b>9,463.9</b>	8,015.0	2,551.6	<b>10,566.6</b>	209.1	<b>24,126.2</b>
<b>Q4</b>	4,309.1	652.0	<b>4,961.1</b>	298.1	11,253.5	896.2	<b>12,447.9</b>	4,809.2	2,703.0	481.5	109.3	<b>8,103.1</b>	-199.9	254.7	560.0	<b>614.7</b>	26,126.8	10,531.2	1,217.8	<b>11,749.0</b>	10,421.5	1,996.0	<b>12,417.6</b>	-607.3	<b>24,850.9</b>
<b>2019 Q1</b>	4,277.7	651.7	<b>4,929.4</b>	299.2	11,467.7	908.3	<b>12,675.2</b>	4,829.2	2,512.7	549.6	111.6	<b>8,003.1</b>	-201.7	-118.4	-141.0	<b>-461.1</b>	25,146.6	8,003.4	1,282.3	<b>9,285.7</b>	8,844.8	1,541.0	<b>10,385.8</b>	435.8	<b>24,482.3</b>
<b>Q2</b>	4,494.7	651.8	<b>5,146.5</b>	300.6	11,470.3	931.1	<b>12,702.1</b>	4,954.4	2,586.3	495.6	106.0	<b>8,142.3</b>	-203.4	43.4	-386.0	<b>-545.9</b>	25,444.9	9,378.1	1,236.5	<b>10,614.6</b>	9,069.2	1,786.1	<b>10,855.3</b>	-389.7	<b>24,814.5</b>

Note: 2016-2019 estimates are provisional



# STATISTICS BOTSWANA



Private Bag 0024, Gaborone.

**TOLL FREE NUMBER:** 0800600200 **Tel:** ( +267) 367 1300**Fax:** ( +267) 395 2201

**E-mail:** [info@statsbots.org.bw](mailto:info@statsbots.org.bw) **Website:** <http://www.statsbots.org.bw>