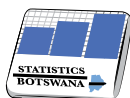




# CONSUMER PRICE INDEX

May 2019



## STATISTICS BOTSWANA

**Contact Statistician:**  
Phaladi Labobedi

Private Bag 0024, Gaborone  
**Tel:** 3671300 **Fax:** 3952201  
**Toll Free:** 0800 600 200

Private Bag F193,  
City of Francistown Botswana  
**Tel.** 241 5848, **Fax.** 241 7540

Private Bag 32  
Ghanzi  
**Tel:** 371 5723 **Fax:** 659 7506

Private Bag 47  
Maun  
**Tel:** 371 5716 **Fax:** 686 4327

**E-mail:** [info@statsbots.org.bw](mailto:info@statsbots.org.bw) **Website:** <http://www.statsbots.org.bw>

## CONTENTS

<b>SECTION 1:</b> Headline Inflation.....	1
<b>SECTION 2:</b> Core Inflation.....	1
<b>GLOSSARY</b> .....	11

## CHARTS

<b>CHART 1:</b> National Rates of Inflation.....	2
<b>CHART 2:</b> Monthly Changes In the Consumer Price Index.....	2
<b>CHART 3:</b> Non-Tradeables Inflation Rates.....	2
<b>CHART 4:</b> Tradeables Inflation Rates.....	2

## TABLES

<b>TABLE 1:</b> Consumer Price Index (December 2018 =100.0).....	3
<b>TABLE 2:</b> National Consumer Price Group & Section Indices (December 2018= 100.0).....	5
<b>TABLE 3:</b> Consumer Price Index by Tradeability (December 2018 = 100.0).....	7
<b>TABLE 4:</b> Core Inflation Rates by Exclusion and Trimmed Mean.....	8
<b>TABLE 5:</b> Average Annual Inflation (December 2018= 100.0).....	9

## COMMENTARY

### SECTION 1: HEADLINE INFLATION

The annual inflation rate in May 2019 was 2.6 percent, registering an increase of 0.1 of a percentage point on the April 2019 rate of 2.5 percent. The inflation rates for regions between April 2019 and May 2019 showed that for Urban Villages, the rate increased to 2.7 percent from 2.6 percent, Rural Villages rose from 1.7 percent to 1.8 percent and Cities & Towns remained at 2.9 percent between the two months.

The National Consumer Price Index moved to 101.3 in May 2019, registering an increase of 0.2 percent. The Urban Villages' Index moved from 101.3 in April to 101.5 in May registering an increase of 0.2 percent. The Rural Villages' Index realised an increase of 0.2 percent, moving from 100.8 to 100.9 during the period under review. The Cities & Towns Index registered an increase of 0.1 percent, from 101.2 to 101.4 over the two periods.

Group indices were generally moving at a stable pace between April 2019 and May 2019, recording changes of less than 1.0 percent, except the Alcoholic Beverages & Tobacco group index, which increased by 1.1 percent.

The Alcoholic Beverages & Tobacco group index registered an increase of 1.1 percent, from 101.2 in April 2019 to 102.4 in May 2019. This was owing to the increase in the constituent section indices of Alcoholic Beverages (1.2 percent) and Tobacco (0.8 percent).

The Food & Non-Alcoholic Beverages group Index moved from 101.4 in April 2019 to 102.0 in May, recording an increase of 0.5 percent. The growth was due to the general increase in section indices.

The Restaurants & Hotels group index moved from 100.8 to 101.1, recording an increase of 0.3 percent between April and May. The rise was owed to the general increase in section indices.

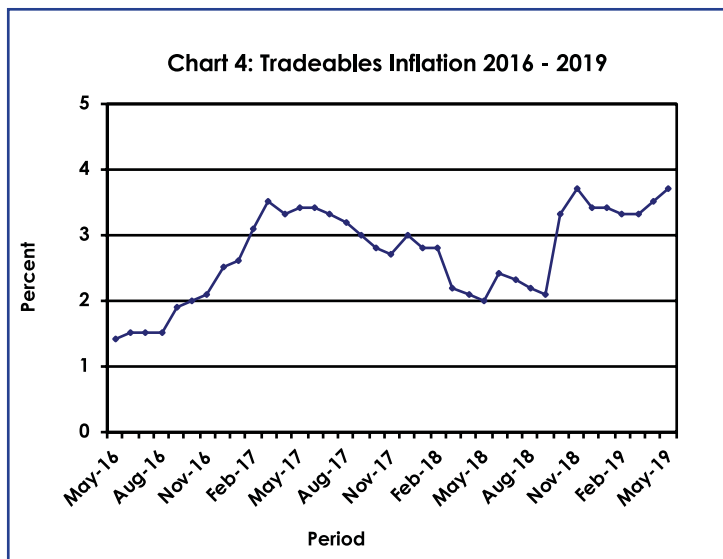
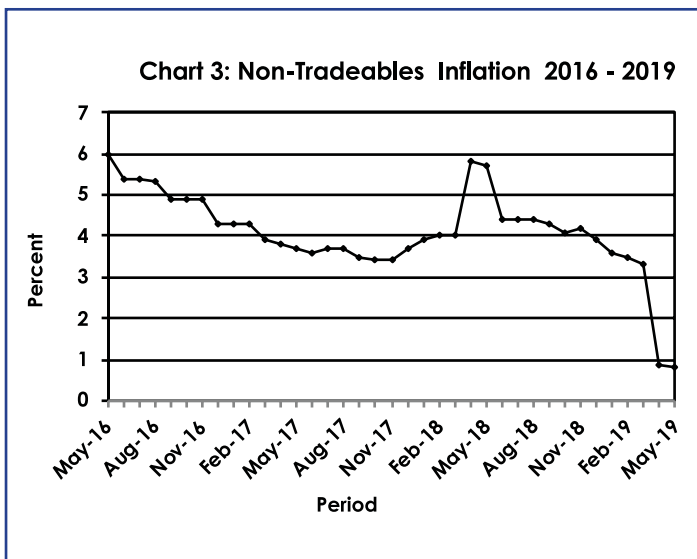
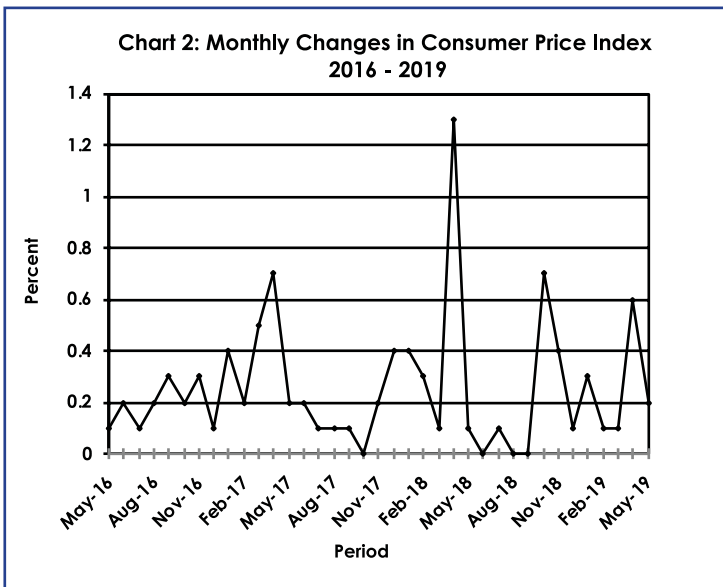
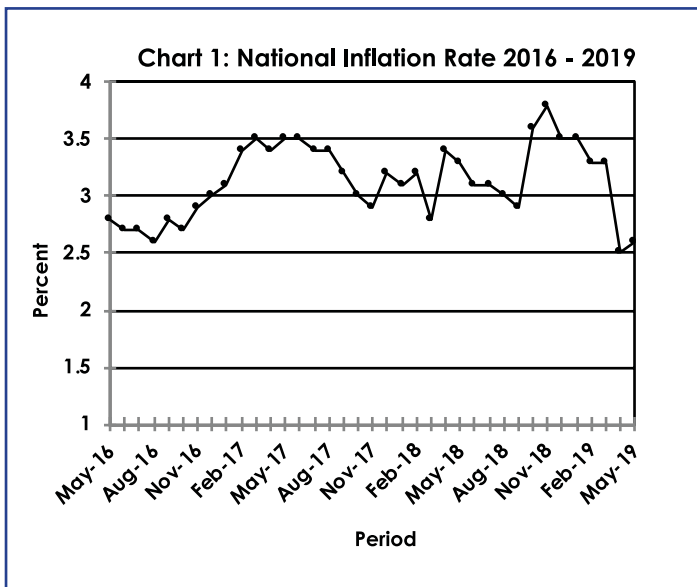
The All-Tradeables index moved from 101.1 in April to 101.4 in May, registering an increase of 0.3 percent. The Domestic Tradeables Index realized an increase of 0.5 percent, moving from 101.8 in April to 102.3 in May 2019. The Imported Tradeables Index recorded an increase of 0.2 percent, advancing from 100.8 in April to 101.0 in May 2019. The Non-Tradeables Index, remained at 101.3 between April and May 2019.

All-Tradeables inflation rate was 3.7 percent in May 2019, recording a rise of 0.2 of a percentage point on the April 2019 rate of 3.5 percent. The Domestic Tradeables inflation rate increased from 1.9 to 2.4 percent during the period under review. The Imported Tradeables inflation rate went up to 4.4 percent in May from 4.3 percent in April, while the Non-Tradeables inflation rate declined from 0.9 percent in April to 0.8 percent in May.

### SECTION 2: CORE INFLATION

The Trimmed Mean Core Inflation rate in May 2018 was 2.7 percent, an increase of 0.1 of a percentage point on the April 2019 rate of 2.6 percent. The Core Inflation rate by exclusion registered an increase of 0.2 of a percentage point advancing from 1.7 percent to 1.9 percent over the two periods

CHARTS



Dr. Burton S. Mguni  
 Statistician General  
 14<sup>th</sup> June 2019

## TABLES

TABLE 1 : CONSUMER PRICE INDEX (DECEMBER 2018 =100.0)

		Food	Alcohol and Tobacco	Clothing and Footwear	Housing	Furniture etc	Health	Transport	Communication	Rec. & Culture	Education	Rest. & Hotels	Miscellaneous
Weights		13.55	4.34	5.95	17.45	4.85	3.38	23.43	6.94	2.82	4.60	3.66	9.01
<b>2016</b>	Jan	95.8	93.2	92.4	88.4	93.2	94.5	87.6	108.8	95.1	91.0	90.9	85.0
	Feb	96.3	93.4	93.0	88.3	93.3	94.6	86.4	108.8	95.6	91.0	91.2	84.7
	Mar	96.6	93.4	93.5	89.5	93.5	94.6	86.5	108.8	95.7	91.0	91.4	84.9
	Apr	97.4	93.9	94.0	89.5	93.6	94.9	86.6	108.8	95.8	91.0	91.7	90.4
	May	97.5	94.1	94.4	89.4	93.7	96.7	86.7	108.8	95.8	91.0	91.8	90.4
	Jun	97.2	94.2	94.9	90.2	94.2	96.8	87.0	108.8	95.8	91.0	92.2	90.7
	Jul	97.5	94.5	95.1	90.1	94.3	96.8	87.1	108.8	95.9	91.0	92.2	90.8
	Aug	97.8	94.6	95.3	90.2	94.5	96.8	87.1	108.8	96.0	91.0	92.5	90.8
	Sept	98.1	94.6	95.4	91.1	94.9	96.8	87.1	108.8	96.2	91.0	92.9	90.8
	Oct	98.5	95.2	95.6	91.1	95.0	96.8	87.1	108.8	96.3	91.0	93.1	91.2
	Nov	99.0	95.8	96.0	91.2	95.5	97.0	87.2	108.8	96.4	91.0	93.4	91.3
	Dec	99.1	95.8	96.1	91.3	95.7	97.1	87.3	108.8	96.4	91.0	93.5	91.3
<b>2017</b>	Jan	100.0	96.8	96.5	91.5	96.1	97.6	86.8	108.9	96.8	94.7	94.2	91.5
	Feb	100.4	97.4	96.8	91.6	96.5	97.7	87.0	108.9	97.2	94.7	94.4	91.7
	Mar	100.9	97.9	97.0	92.0	96.9	97.8	87.9	108.9	97.4	94.7	94.8	92.0
	Apr	101.1	98.5	97.2	95.5	97.0	97.9	88.0	108.9	98.1	94.7	95.0	92.2
	May	101.5	99.0	97.4	95.5	97.2	98.0	88.1	109.0	98.1	94.7	95.3	92.3
	Jun	101.4	99.0	97.5	95.7	97.4	98.6	88.3	109.2	98.2	94.8	95.5	93.2
	Jul	101.6	99.1	97.9	95.8	97.6	98.7	88.3	109.2	98.3	94.8	95.9	93.2
	Aug	101.5	99.2	98.1	95.8	97.7	98.8	88.5	109.2	98.4	94.8	96.2	93.2
	Sept	100.9	99.3	98.3	96.4	97.9	98.8	88.6	110.3	98.3	94.8	96.4	93.3
	Oct	100.8	99.1	98.4	96.3	98.0	98.8	88.6	110.3	98.4	94.9	96.6	93.4
	Nov	100.7	99.0	98.4	96.3	98.1	98.9	89.4	110.3	98.3	94.9	96.6	93.4
	Dec	100.2	99.1	98.5	96.7	97.9	98.9	90.9	110.1	98.5	94.9	97.1	93.9
<b>2018</b>	Jan	100.4	99.1	98.6	96.8	98.1	99.0	91.2	110.2	98.7	99.9	97.4	94.2
	Feb	100.8	99.2	98.7	96.9	98.4	99.1	91.5	110.2	99.0	99.9	97.8	94.7
	Mar	100.9	99.3	98.9	97.2	99.0	99.2	91.4	110.3	99.4	100.0	97.9	94.9
	Apr	101.0	99.2	99.3	98.6	99.1	99.2	93.5	110.3	100.0	100.0	98.4	100.0
	May	100.9	99.5	99.5	98.7	99.2	99.4	93.6	110.3	100.1	100.0	98.6	100.1
	Jun	100.7	99.7	99.6	99.2	99.5	99.4	95.0	100.2	100.1	100.0	99.0	100.2
	Jul	100.5	99.9	99.9	99.2	99.6	99.5	95.1	100.2	100.2	100.0	99.4	100.3
	Aug	100.2	100.1	99.8	99.3	99.6	99.5	95.2	100.2	100.2	100.0	99.5	100.3
	Sept	99.9	100.1	99.8	99.7	100.0	99.7	95.0	100.2	100.2	100.0	99.7	100.2
	Oct	99.8	100.2	99.7	99.7	100.0	99.8	98.4	100.2	99.8	100.0	99.7	99.8
	Nov	99.9	100.2	99.8	99.9	100.1	99.9	99.8	100.2	99.9	100.0	99.7	99.8
	Dec	100.0	100.0	100.0	100.0	100.0	100.0	100.0	100.0	100.0	100.0	100.0	100.0
<b>2019</b>	Jan	100.4	99.8	100.2	100.1	100.2	100.1	100.3	100.0	100.1	103.0	100.0	100.3
	Feb	100.6	99.6	100.2	100.1	100.4	100.2	100.6	100.0	100.1	103.1	100.1	100.6
	Mar	101.0	99.9	100.3	100.3	100.6	100.3	100.5	100.0	100.4	103.1	100.6	100.4
	Apr	101.4	101.2	100.4	100.3	100.7	100.3	100.7	100.0	100.2	103.1	100.8	104.9
	May	102.0	102.4	100.5	100.4	100.8	100.4	100.8	100.0	100.2	103.1	101.1	104.9
<b>% Change on</b>													
<b>Last month</b>		<b>0.5</b>	<b>1.1</b>	<b>0.1</b>	<b>0.0</b>	<b>0.0</b>	<b>0.1</b>	<b>0.1</b>	<b>0.0</b>	<b>(0.0)</b>	<b>0.0</b>	<b>0.3</b>	<b>(0.0)</b>

## Consumer Price Index- May 2019

TABLE 1: CONSUMER PRICE INDEX (Cont.)

		All Items Index	National Inflation Rate	Monthly Change	Towns & Cities Index	Urban Village Index	Rural Villages Index	Annual Inflation		
								Towns & Cities	Urban Villages	Rural
		100.0	%	%	0.38	0.41	0.21	%	%	%
<b>2016</b>	Jan	91.2	2.7	0.4	90.3	91.8	91.8	2.7	2.6	2.8
	Feb	91.2	3.0	(0.0)	90.1	91.9	92.0	2.9	3.2	3.1
	Mar	91.5	3.0	0.3	90.5	92.2	92.1	3.1	3.2	2.7
	Apr	92.3	2.8	0.9	91.4	93.0	92.7	2.6	3.2	2.7
	May	92.4	2.8	0.1	91.5	93.1	92.9	2.7	3.1	2.5
	Jun	92.6	2.7	0.2	91.7	93.2	93.1	2.5	2.8	2.6
	Jul	92.7	2.7	0.1	91.8	93.3	93.6	2.5	2.7	3.0
	Aug	92.9	2.6	0.2	92.0	93.4	93.7	2.6	2.6	2.9
	Sept	93.1	2.8	0.3	92.3	93.5	93.9	2.8	2.7	2.9
	Oct	93.3	2.7	0.2	92.4	93.7	94.2	2.5	2.7	3.1
	Nov	93.5	2.9	0.3	92.6	93.9	94.6	2.7	2.9	3.5
	Dec	93.6	3.0	0.1	92.7	93.9	94.7	2.8	3.0	3.5
<b>2017</b>	Jan	94.0	3.1	0.4	93.1	94.3	95.1	3.1	2.8	3.6
	Feb	94.2	3.4	0.2	93.3	94.6	95.5	3.5	2.9	3.8
	Mar	94.7	3.5	0.5	93.8	95.0	95.9	3.6	3.0	4.2
	Apr	95.4	3.4	0.7	94.4	95.8	96.5	3.3	3.0	4.2
	May	95.6	3.5	0.2	94.6	96.0	96.8	3.4	3.1	4.1
	Jun	95.8	3.5	0.2	94.8	96.2	96.8	3.4	3.3	3.9
	Jul	95.9	3.4	0.1	95.0	96.3	97.0	3.5	3.2	3.7
	Aug	96.0	3.4	0.1	95.0	96.4	97.1	3.4	3.2	3.6
	Sept	96.1	3.2	0.1	95.2	96.3	97.2	3.2	3.0	3.4
	Oct	96.1	3.0	0.0	95.2	96.2	97.3	3.0	2.7	3.3
	Nov	96.2	2.9	0.2	95.5	96.4	97.4	3.1	2.6	3.0
	Dec	96.6	3.2	0.4	96.0	96.6	97.6	3.6	2.9	3.1
<b>2018</b>	Jan	97.0	3.1	0.4	96.4	97.0	97.8	3.6	2.9	2.8
	Feb	97.2	3.2	0.3	96.7	97.3	98.1	3.6	2.9	2.7
	Mar	97.4	2.8	0.1	96.8	97.5	98.1	3.3	2.6	2.3
	Apr	98.7	3.4	1.3	98.4	98.7	99.1	4.2	3.1	2.7
	May	98.7	3.3	0.1	98.5	98.8	99.1	4.1	3.0	2.5
	Jun	98.8	3.1	0.0	98.6	98.8	99.0	4.0	2.7	2.3
	Jul	98.8	3.1	0.1	98.7	98.9	99.1	3.9	2.7	2.1
	Aug	98.8	3.0	(0.0)	98.6	98.9	99.1	3.8	2.6	2.0
	Sept	98.9	2.9	0.0	98.7	98.9	99.1	3.6	2.7	2.0
	Oct	99.5	3.6	0.7	99.5	99.5	99.7	4.4	3.4	2.5
	Nov	99.9	3.8	0.4	99.9	99.8	100.0	4.7	3.6	2.6
	Dec	100.0	3.5	0.1	100.0	100.0	100.0	4.2	3.5	2.5
<b>2019</b>	Jan	100.3	3.5	0.3	100.4	100.3	100.2	4.1	3.4	2.4
	Feb	100.5	3.3	0.1	100.6	100.5	100.3	4.0	3.2	2.3
	Mar	100.6	3.3	0.1	100.6	100.6	100.3	3.9	3.2	2.2
	Apr	101.2	2.5	0.6	101.2	101.3	100.8	2.9	2.6	1.7
	May	101.3	2.6	0.2	101.4	101.5	100.9	2.9	2.7	1.8
<b>% Change on last month</b>		<b>0.2</b>			<b>0.1</b>	<b>0.2</b>	<b>0.2</b>			

TABLE 2: NATIONAL CONSUMER PRICE GROUP AND SECTION INDICES (DECEMBER 2018=100.0)

	Group Section	Weights	This month May 2019	Last month April 2019	3 months ago Feb 2019	6 months ago Nov 2018	12 months ago May 2018	Percentage Change on:			
								Last month	3 months ago	6 months ago	12 months ago
<b>1</b>	<b>Food &amp; Non-Alcoholic Beverages</b>	<b>13.55</b>	<b>102.0</b>	<b>101.4</b>	<b>100.6</b>	<b>99.9</b>	<b>100.9</b>	<b>0.5</b>	<b>1.4</b>	<b>2.1</b>	<b>1.0</b>
1.1	Bread & Cereals	4.26	101.8	101.0	100.6	100.1	102.6	0.8	1.3	1.7	(0.7)
1.2	Meat (Fresh, Chilled & Frozen)	2.36	101.9	101.8	100.9	99.8	100.4	0.1	1.0	2.1	1.5
1.3	Fish (Fresh, Chilled & Frozen)	0.18	102.3	101.5	100.2	100.0	100.0	0.7	2.0	2.3	2.3
1.4	Milk, Cheese & Milk Products	0.98	101.2	101.0	100.2	99.9	98.2	0.1	0.9	1.3	3.0
1.5	Oils & Fats	0.92	100.3	100.2	99.8	100.4	101.3	0.1	0.5	(0.1)	(1.0)
1.6	Fruits	0.78	104.1	103.0	101.4	99.2	100.2	1.0	2.6	4.9	3.8
1.7	Vegetables	1.08	105.4	103.2	100.7	100.9	103.8	2.1	4.7	4.5	1.5
1.8	Sugar, Jam, Honey, Chocolate & Confectionery	1.11	99.5	99.7	99.9	98.2	98.6	(0.2)	(0.4)	1.3	0.9
1.9	Food Not Elsewhere Classified	0.54	102.9	102.7	101.3	99.7	100.2	0.1	1.5	3.2	2.6
1.10	Coffee, Tea & Cocoa	0.73	101.7	101.4	100.8	99.5	97.9	0.3	0.9	2.2	3.8
1.11	Mineral Waters, Soft Drinks, Fruits & Vegetables Juices	0.62	102.3	101.9	101.1	100.2	98.9	0.4	1.2	2.1	3.4
<b>2</b>	<b>Alcoholic Beverages &amp; Tobacco</b>	<b>4.34</b>	<b>102.4</b>	<b>101.2</b>	<b>99.6</b>	<b>100.2</b>	<b>99.5</b>	<b>1.1</b>	<b>2.8</b>	<b>2.2</b>	<b>2.9</b>
2.1	Alcoholic Beverages	3.51	102.3	101.1	99.4	100.2	99.6	1.2	2.9	2.1	2.7
2.2	Tobacco	0.82	102.7	101.9	100.4	100.1	99.1	0.8	2.2	2.6	3.6
<b>3</b>	<b>Clothing &amp; Footwear</b>	<b>5.95</b>	<b>100.5</b>	<b>100.4</b>	<b>100.2</b>	<b>99.8</b>	<b>99.5</b>	<b>0.1</b>	<b>0.3</b>	<b>0.7</b>	<b>1.0</b>
3.1	Clothing	2.60	100.7	100.6	100.2	99.8	99.9	0.1	0.4	0.9	0.7
3.2	Other Articles of Clothing	0.72	100.3	100.4	100.4	100.0	99.5	(0.2)	(0.1)	0.3	0.8
3.3	Cleaning, Repair & Hire	0.61	100.3	100.3	100.0	99.5	97.4	0.1	0.3	0.8	3.0
3.4	Footwear	2.03	100.4	100.2	100.1	99.9	100.1	0.2	0.2	0.5	0.3
<b>4</b>	<b>Housing, Water, Electricity, Gas &amp; Other Fuels</b>	<b>17.45</b>	<b>100.4</b>	<b>100.3</b>	<b>100.1</b>	<b>99.9</b>	<b>98.7</b>	<b>0.0</b>	<b>0.2</b>	<b>0.5</b>	<b>1.7</b>
4.1	Rent Paid by Tenants	7.78	100.4	100.4	100.0	100.0	98.1	0.0	0.4	0.4	2.3
4.2	Materials for Maintenance & Repair of Dwellings	3.83	101.0	100.9	100.6	99.8	99.0	0.1	0.4	1.2	2.0
4.3	Water Supply & Miscellaneous Services	1.96	100.0	100.0	100.0	100.0	100.0	0.0	0.0	0.0	0.0
4.4	Electricity, Gas & Other Fuels	3.89	100.0	99.9	99.9	99.8	98.8	0.0	0.0	0.2	1.2
<b>5</b>	<b>Furnishing, H/H Equipment &amp; Routine Maintenance</b>	<b>4.85</b>	<b>100.8</b>	<b>100.7</b>	<b>100.4</b>	<b>100.1</b>	<b>99.2</b>	<b>0.0</b>	<b>0.4</b>	<b>0.7</b>	<b>1.6</b>
5.1	Furniture & Furnishing	1.35	100.4	100.4	100.2	100.0	99.0	0.1	0.3	0.5	1.5
5.2	Carpets & Other Floor Coverings	0.27	100.3	100.2	100.2	99.8	98.9	0.2	0.2	0.6	1.4
5.3	Household Textiles	0.29	100.2	100.1	100.1	99.7	99.3	0.1	0.1	0.5	0.9
5.4	Household Appliances	0.72	100.0	100.1	100.2	100.1	100.0	(0.1)	(0.1)	(0.1)	0.0
5.5	Glassware, Tableware & Household Utensils	0.23	100.7	100.5	100.3	100.0	98.7	0.1	0.3	0.6	2.0
5.6	Small Tools, Miscellaneous Accessories	0.04	101.7	101.3	100.7	100.3	100.1	0.3	0.9	1.3	1.5
5.7	Goods & Services for Household Maintenance	1.95	101.4	101.4	100.6	100.2	99.2	0.0	0.7	1.2	2.2
<b>6</b>	<b>Health</b>	<b>3.38</b>	<b>100.4</b>	<b>100.3</b>	<b>100.2</b>	<b>99.9</b>	<b>99.4</b>	<b>0.1</b>	<b>0.2</b>	<b>0.5</b>	<b>1.0</b>
6.1	Medical Products, Applications & Equipments	0.98	101.2	101.1	100.5	99.9	97.5	0.2	0.7	1.4	3.8
6.2	Out-Patient Services	0.93	100.1	100.1	100.0	99.8	99.7	0.0	0.1	0.3	0.4
6.3	Hospital Services	1.47	100.0	100.0	100.0	100.0	100.0	0.0	0.0	0.0	0.0

## Consumer Price Index- May 2019

TABLE 2: NATIONAL CONSUMER PRICE GROUP AND SECTION INDICES (DECEMBER 2018=100.0) (Cont.)

	Group Section	Weights	This month May 2019	Last month April 2019	3 months ago Feb 2019	6 months ago Nov 2018	12 months ago May 2018	Percentage Change on:			
								Last month	3 months ago	6 months ago	12 months ago
<b>7</b>	<b>Transport</b>	<b>23.43</b>	<b>100.8</b>	<b>100.7</b>	<b>100.6</b>	<b>99.8</b>	<b>93.6</b>	<b>0.1</b>	<b>0.2</b>	<b>1.0</b>	<b>7.7</b>
7.1	Purchase of Vehicles	5.74	102.5	102.4	102.2	99.0	97.1	0.1	0.3	3.6	5.5
7.2	Operation of Personal Transport	12.56	100.3	100.1	100.1	100.1	89.8	0.1	0.2	0.1	11.7
7.3	Transport Services	5.13	100.1	100.1	100.0	100.0	100.0	0.0	0.1	0.1	0.1
<b>8</b>	<b>Communication</b>	<b>6.94</b>	<b>100.0</b>	<b>100.0</b>	<b>100.0</b>	<b>100.2</b>	<b>110.3</b>	<b>0.0</b>	<b>0.0</b>	<b>(0.2)</b>	<b>(9.3)</b>
8.1	Postal Services	0.21	100.0	100.0	100.0	100.0	100.0	0.0	0.0	0.0	0.0
8.2	Telephone & Telefax Equipment	1.13	100.1	100.0	100.0	101.0	100.8	0.1	0.1	(0.9)	(0.7)
8.3	Telephone & Telefax Services	5.60	100.0	100.0	100.0	100.0	113.2	0.0	0.0	(0.0)	(11.7)
<b>9</b>	<b>Recreation &amp; Culture</b>	<b>2.82</b>	<b>100.2</b>	<b>100.2</b>	<b>100.1</b>	<b>99.9</b>	<b>100.1</b>	<b>(0.0)</b>	<b>0.0</b>	<b>0.3</b>	<b>0.0</b>
9.1	Audio Visual, Photographic & Information Processing Equipment	2.10	100.1	100.1	100.2	99.9	100.4	(0.1)	(0.1)	0.2	(0.3)
9.2	Other Recreational Items & Equipments	0.30	101.0	100.6	100.1	99.8	99.5	0.3	0.8	1.2	1.5
9.3	Recreational & Cultural Services	0.31	100.0	100.0	100.0	100.0	100.0	0.0	0.0	0.0	0.0
9.4	Newspapers, Books & Stationary	0.11	100.4	100.2	100.0	99.7	98.6	0.2	0.4	0.7	1.8
<b>10</b>	<b>Education</b>	<b>4.60</b>	<b>103.1</b>	<b>103.1</b>	<b>103.1</b>	<b>100.0</b>	<b>100.0</b>	<b>0.0</b>	<b>0.0</b>	<b>3.1</b>	<b>3.2</b>
10.1	Pre-Primary & Primary Education	1.89	103.4	103.3	103.3	100.0	100.0	0.0	0.0	3.4	3.4
10.2	Secondary & Tertiary Education	2.70	103.0	102.9	102.9	100.0	100.0	0.0	0.0	3.0	3.0
<b>11</b>	<b>Restaurants &amp; Hotels</b>	<b>3.66</b>	<b>101.1</b>	<b>100.8</b>	<b>100.1</b>	<b>99.7</b>	<b>98.6</b>	<b>0.3</b>	<b>0.9</b>	<b>1.4</b>	<b>2.5</b>
11.1	Restaurants, Cafes & the Like	3.02	101.0	100.8	100.1	99.7	98.7	0.3	0.9	1.4	2.4
11.2	Accommodation Services	0.64	101.3	101.0	100.2	100.0	98.5	0.3	1.0	1.3	2.8
<b>12</b>	<b>Miscellaneous Goods &amp; Services</b>	<b>9.01</b>	<b>104.9</b>	<b>104.9</b>	<b>100.6</b>	<b>99.8</b>	<b>100.1</b>	<b>(0.0)</b>	<b>4.3</b>	<b>5.1</b>	<b>4.8</b>
12.1	Personal Care	2.33	101.1	100.9	100.6	100.1	99.9	0.3	0.6	1.0	1.2
12.2	Personal Effects Not Elsewhere Classified	0.22	100.2	100.2	100.0	99.8	100.1	0.0	0.3	0.4	0.2
12.3	Social Protection	0.13	101.6	101.6	101.6	100.0	100.0	0.0	0.0	1.6	1.6
12.4	Insurance	3.62	111.1	111.4	100.9	99.7	100.4	(0.3)	10.0	11.4	10.6
12.5	Financial Services	1.09	100.6	100.3	100.2	99.6	98.8	0.3	0.4	1.0	1.8
12.6	Taxes, Licences & Fees	1.61	100.1	100.1	100.0	100.0	99.9	0.0	0.1	0.1	0.2
	<b>All-Items Index</b>	<b>100.0</b>	<b>101.3</b>	<b>101.2</b>	<b>100.5</b>	<b>99.9</b>	<b>98.7</b>	<b>0.2</b>	<b>0.9</b>	<b>1.4</b>	<b>2.6</b>



## Consumer Price Index- May 2019

TABLE 3: CONSUMER PRICE INDEX BY TRADABILITY (DECEMBER 2018 = 100.0)

	All Items		Non-Tradable		Domestic Tradable		Imported Tradable		All Tradable		
	Index	Inflation	Index	Inflation	Index	Inflation	Index	Inflation	Index	Inflation	
<b>Weights</b>	<b>100.00</b>		<b>42.29</b>		<b>15.46</b>		<b>42.26</b>		<b>57.71</b>		
<b>2016</b>	Jan	91.2	<b>2.7</b>	89.3	<b>7.3</b>	94.7	<b>2.6</b>	91.0	<b>-0.3</b>	92.0	<b>0.8</b>
	Feb	91.2	<b>3.0</b>	89.3	<b>7.0</b>	95.1	<b>2.5</b>	90.7	<b>0.7</b>	92.0	<b>1.4</b>
	Mar	91.5	<b>3.0</b>	89.8	<b>7.3</b>	95.3	<b>2.1</b>	91.0	<b>0.8</b>	92.2	<b>1.3</b>
	Apr	92.3	<b>2.8</b>	91.5	<b>6.1</b>	95.9	<b>2.3</b>	91.3	<b>0.9</b>	92.6	<b>1.4</b>
	May	92.4	<b>2.8</b>	91.7	<b>6.0</b>	96.1	<b>2.5</b>	91.4	<b>0.8</b>	92.7	<b>1.4</b>
	Jun	92.6	<b>2.7</b>	92.1	<b>5.4</b>	96.0	<b>2.5</b>	91.5	<b>0.9</b>	92.8	<b>1.5</b>
	Jul	92.7	<b>2.7</b>	92.2	<b>5.4</b>	96.2	<b>2.8</b>	91.6	<b>0.7</b>	93.0	<b>1.5</b>
	Aug	92.9	<b>2.6</b>	92.2	<b>5.3</b>	96.6	<b>3.0</b>	91.7	<b>0.6</b>	93.2	<b>1.5</b>
	Sept	93.1	<b>2.8</b>	92.7	<b>4.9</b>	96.7	<b>3.5</b>	91.9	<b>0.9</b>	93.3	<b>1.9</b>
	Oct	93.3	<b>2.7</b>	92.8	<b>4.9</b>	97.0	<b>3.1</b>	92.1	<b>0.9</b>	93.5	<b>1.9</b>
	Nov	93.5	<b>2.9</b>	92.8	<b>4.9</b>	97.4	<b>3.4</b>	92.4	<b>1.2</b>	93.9	<b>2.1</b>
	Dec	93.6	<b>3.0</b>	92.8	<b>4.3</b>	97.6	<b>3.6</b>	92.4	<b>1.8</b>	94.0	<b>2.5</b>
<b>2017</b>	Jan	94.0	<b>3.1</b>	93.1	<b>4.3</b>	98.8	<b>4.3</b>	92.6	<b>1.7</b>	94.5	<b>2.6</b>
	Feb	94.2	<b>3.4</b>	93.2	<b>4.3</b>	99.3	<b>4.3</b>	92.9	<b>2.4</b>	94.8	<b>3.1</b>
	Mar	94.7	<b>3.5</b>	93.4	<b>3.9</b>	99.7	<b>4.6</b>	93.6	<b>2.9</b>	95.4	<b>3.5</b>
	Apr	95.4	<b>3.4</b>	94.9	<b>3.8</b>	100.0	<b>4.3</b>	93.8	<b>2.7</b>	95.7	<b>3.3</b>
	May	95.6	<b>3.5</b>	95.0	<b>3.7</b>	100.2	<b>4.3</b>	94.0	<b>2.9</b>	95.9	<b>3.4</b>
	Jun	95.8	<b>3.5</b>	95.4	<b>3.6</b>	100.1	<b>4.2</b>	94.2	<b>2.9</b>	96.0	<b>3.4</b>
	Jul	95.9	<b>3.4</b>	95.6	<b>3.7</b>	99.9	<b>3.8</b>	94.4	<b>3.0</b>	96.1	<b>3.3</b>
	Aug	96.0	<b>3.4</b>	95.6	<b>3.7</b>	99.8	<b>3.4</b>	94.6	<b>3.1</b>	96.2	<b>3.2</b>
	Sept	96.1	<b>3.2</b>	95.9	<b>3.5</b>	99.2	<b>2.6</b>	94.7	<b>3.1</b>	96.1	<b>3.0</b>
	Oct	96.1	<b>3.0</b>	96.0	<b>3.4</b>	99.1	<b>2.2</b>	94.8	<b>3.0</b>	96.1	<b>2.8</b>
	Nov	96.2	<b>2.9</b>	95.9	<b>3.4</b>	98.9	<b>1.6</b>	95.2	<b>3.1</b>	96.4	<b>2.7</b>
	Dec	96.6	<b>3.2</b>	96.3	<b>3.7</b>	98.9	<b>1.3</b>	95.8	<b>3.7</b>	96.8	<b>3.0</b>
<b>2018</b>	Jan	97.0	<b>3.1</b>	96.7	<b>3.9</b>	99.3	<b>0.5</b>	96.1	<b>3.8</b>	97.1	<b>2.8</b>
	Feb	97.2	<b>3.2</b>	96.9	<b>4.0</b>	99.6	<b>0.3</b>	96.4	<b>3.8</b>	97.4	<b>2.8</b>
	Mar	97.4	<b>2.8</b>	97.1	<b>4.0</b>	99.8	<b>0.1</b>	96.5	<b>3.1</b>	97.5	<b>2.2</b>
	Apr	98.7	<b>3.4</b>	100.4	<b>5.8</b>	99.9	<b>-0.1</b>	96.7	<b>3.1</b>	97.7	<b>2.1</b>
	May	98.7	<b>3.3</b>	100.5	<b>5.7</b>	100.0	<b>-0.2</b>	96.8	<b>3.0</b>	97.7	<b>2.0</b>
	Jun	98.8	<b>3.1</b>	99.7	<b>4.4</b>	99.9	<b>-0.2</b>	97.5	<b>3.6</b>	98.2	<b>2.4</b>
	Jul	98.8	<b>3.1</b>	99.8	<b>4.4</b>	99.9	<b>-0.1</b>	97.6	<b>3.4</b>	98.3	<b>2.3</b>
	Aug	98.8	<b>3.0</b>	99.8	<b>4.4</b>	99.8	<b>0.0</b>	97.6	<b>3.2</b>	98.3	<b>2.2</b>
	Sept	98.9	<b>2.9</b>	100.0	<b>4.3</b>	99.8	<b>0.6</b>	97.5	<b>2.9</b>	98.2	<b>2.1</b>
	Oct	99.5	<b>3.6</b>	99.9	<b>4.1</b>	99.7	<b>0.7</b>	99.1	<b>4.5</b>	99.3	<b>3.3</b>
	Nov	99.9	<b>3.8</b>	99.9	<b>4.2</b>	99.9	<b>1.0</b>	99.9	<b>4.9</b>	99.9	<b>3.7</b>
	Dec	100.0	<b>3.5</b>	100.0	<b>3.9</b>	100.0	<b>1.1</b>	100.0	<b>4.4</b>	100.0	<b>3.4</b>
<b>2019</b>	Jan	100.3	<b>3.5</b>	100.2	<b>3.6</b>	100.8	<b>1.5</b>	100.3	<b>4.4</b>	100.4	<b>3.4</b>
	Feb	100.5	<b>3.3</b>	100.2	<b>3.5</b>	100.9	<b>1.4</b>	100.5	<b>4.2</b>	100.6	<b>3.3</b>
	Mar	100.6	<b>3.3</b>	100.3	<b>3.3</b>	101.3	<b>1.5</b>	100.6	<b>4.2</b>	100.7	<b>3.3</b>
	Apr	101.2	<b>2.5</b>	101.3	<b>0.9</b>	101.8	<b>1.9</b>	100.8	<b>4.3</b>	101.1	<b>3.5</b>
	May	101.3	<b>2.6</b>	101.3	<b>0.8</b>	102.3	<b>2.4</b>	101.0	<b>4.4</b>	101.4	<b>3.7</b>
<b>% Change on last month</b>		<b>0.2</b>		<b>0.0</b>		<b>0.5</b>		<b>0.2</b>		<b>0.3</b>	

## Consumer Price Index- May 2019

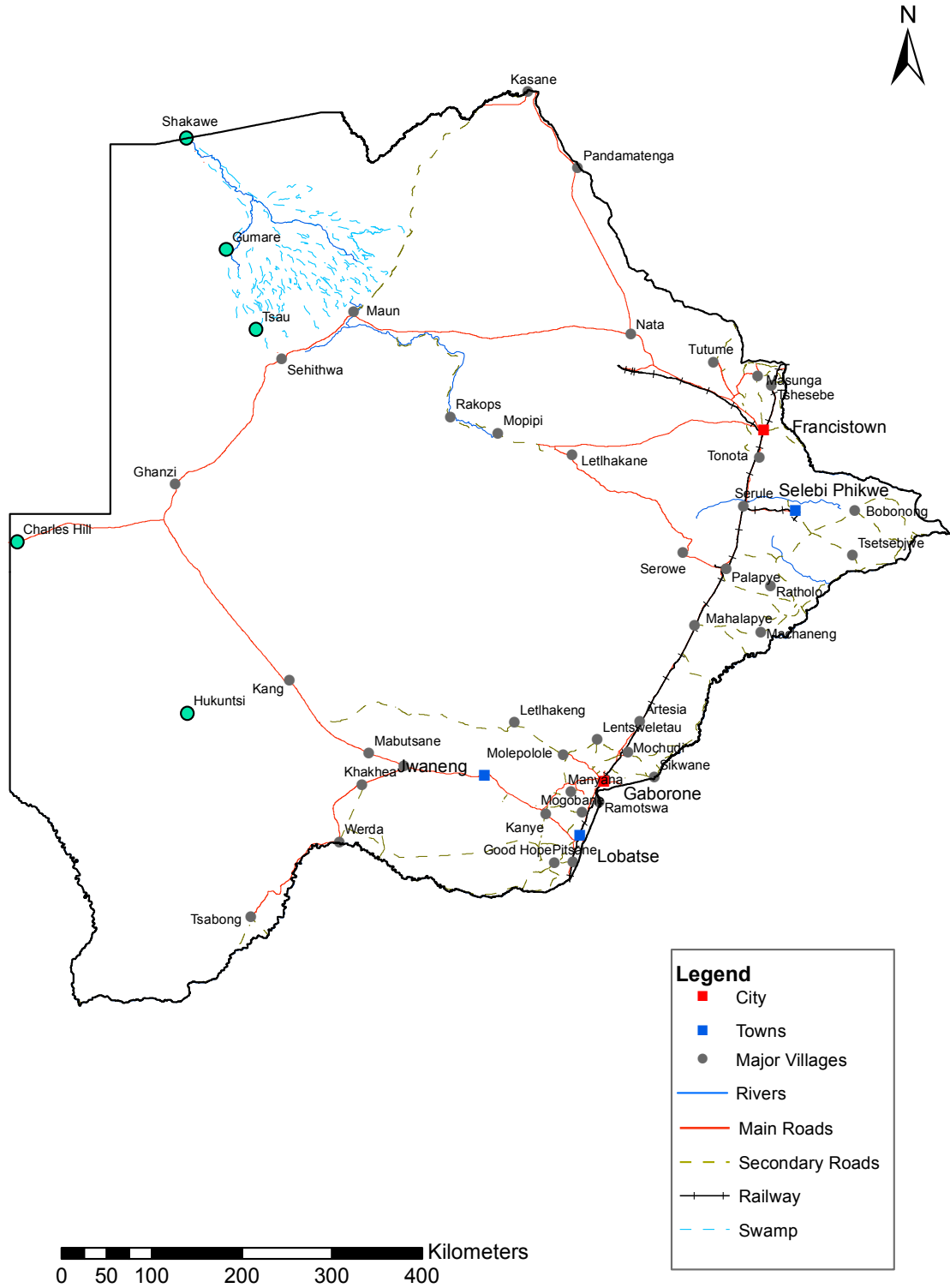
TABLE 4: CORE INFLATION RATES BY EXCLUSION AND TRIMMED MEAN

Year	Month	Consumer Price Index (Trimmed Mean) (September 2016 = 100)	Core Monthly Inflation Rate (Trimmed Mean) (percentage)	Consumer Price Index (Excluding Administered Prices) (September 2016 = 100)	Core Monthly Inflation (Excluding Administered Prices) (percentage)
<b>2016</b>	Jan	90.3	2.8	93.0	4.0
	Feb	90.5	2.6	93.2	3.7
	Mar	90.7	2.5	93.6	3.7
	Apr	91.2	2.4	94.4	3.9
	May	91.4	2.3	94.5	3.8
	Jun	91.4	2.4	94.7	3.6
	Jul	92.1	2.5	94.9	3.6
	Aug	92.3	2.4	95.1	3.6
	Sept	92.6	2.6	95.4	3.6
	Oct	92.8	2.2	95.6	3.4
	Nov	93.0	2.5	95.9	3.7
	Dec	93.1	2.5	96.0	3.7
<b>2017</b>	Jan	93.5	2.7	96.6	3.9
	Feb	93.7	2.9	96.9	3.9
	Mar	94.2	3.1	97.2	3.9
	Apr	94.4	3.1	97.5	3.3
	May	94.5	3.1	97.7	3.4
	Jun	94.8	2.9	97.9	3.3
	Jul	94.9	2.9	98.1	3.3
	Aug	95.0	2.9	98.2	3.3
	Sept	95.1	2.7	98.2	3.0
	Oct	95.2	2.6	98.2	2.8
	Nov	95.4	2.5	98.2	2.4
	Dec	95.8	2.9	98.2	2.3
<b>2018</b>	Jan	96.1	2.8	98.7	2.2
	Feb	96.4	2.9	99.0	2.2
	Mar	96.6	2.6	99.2	2.0
	Apr	97.6	3.1	99.4	1.9
	May	97.7	3.0	99.5	1.8
	Jun	98.6	3.2	99.6	1.8
	Jul	98.7	3.1	99.7	1.7
	Aug	98.7	3.0	99.7	1.6
	Sept	98.8	2.9	99.8	1.6
	Oct	99.5	3.7	99.8	1.6
	Nov	99.6	3.8	99.9	1.7
	Dec	100.0	3.6	100.0	1.8
<b>2019</b>	Jan	100.4	3.6	100.4	1.8
	Feb	100.5	3.5	100.6	1.6
	Mar	100.6	3.5	100.8	1.6
	Apr	101.3	2.6	101.0	1.7
	May	101.5	2.7	101.4	1.9

**TABLE 5: AVERAGE ANNUAL INFLATION 2008 - 2018 ( DECEMBER 2018=100)**

	Group	Weights	2008	2009	2010	2011	2012	2013	2014	2015	2016	2017	2018
1	Food & Non-Alcoholic Beverages	13.55	20.2	14.7	3.6	6.9	8.0	5.4	3.0	1.3	2.7	3.4	(0.5)
2	Alcoholic Beverages & Tobacco	4.34	13.2	35.2	7.1	8.4	7.6	10.3	9.0	6.1	2.5	4.5	1.1
3	Clothing & Footwear	5.95	2.0	8.4	8.0	8.9	7.5	6.3	6.0	7.6	6.5	3.2	1.8
4	Housing, Water, Electr. Gas & Other Fuels	17.45	8.1	4.8	6.4	8.4	7.7	4.3	3.9	7.1	6.3	5.4	4.1
5	Furnishing, H/H Equipment & Routine Maintenance	4.85	6.0	11.9	9.4	9.0	7.3	4.9	5.0	6.1	3.0	3.3	2.1
6	Health	3.38	11.3	5.5	2.7	4.5	5.9	5.5	8.3	6.3	3.0	2.4	1.1
7	Transport	23.43	21.2	(8.4)	12.1	13.2	10.8	7.3	1.2	(5.1)	(2.7)	1.6	7.5
8	Communication	6.94	(0.3)	(0.3)	1.2	(3.0)	(1.4)	0.3	0.3	0.3	0.2	0.5	(4.6)
9	Recreation & Culture	2.82	2.3	5.0	6.0	8.3	5.8	4.5	4.2	5.7	3.0	2.2	1.8
10	Education	4.60	3.9	3.9	5.8	10.6	6.4	4.7	7.4	6.4	3.7	4.1	5.5
11	Restaurants & Hotels	3.66	12.7	18.8	9.0	9.3	8.4	7.9	7.6	5.5	4.0	3.7	3.4
12	Miscellaneous Goods & Services	9.01	4.9	3.8	7.0	5.3	2.0	1.2	5.2	7.2	7.5	3.9	6.4
	<b>All-Items Index</b>	<b>100.0</b>	<b>12.6</b>	<b>8.2</b>	<b>6.9</b>	<b>8.5</b>	<b>7.5</b>	<b>5.9</b>	<b>4.4</b>	<b>3.1</b>	<b>2.8</b>	<b>3.3</b>	<b>3.2</b>

### CPI AREA COVERAGE



Compiled and Prepared by Statistics Botswana, 2016

## GLOSSARY

**Consumer Price Index (CPI)** is an index which measures price changes in goods and services with reference to a base period.

**Inflation** is a measurement of prices movement of goods and services in a particular country.

**Domestic Tradeables** refers to the goods and services which a country (Botswana) can export to other countries.

**Imported Tradeables** represents the goods and services which a country (Botswana) imports from other countries (trading partners).

**Non-Tradeables** refers to the goods and services which a country cannot either export or import to other countries.

**All –Tradeables** refers to the total of **Domestic** and **Imported Tradeables**.

**Trimmed Mean Core Inflation-** attempts to remove 8 percent (by weight) of the commodity sub-groups with the largest price changes at each of the ends of an ordered series of price changes in any given month.

**Core inflation by Exclusion** is a measure used to remove the volatility inherent in prices that are only adjusted periodically and not always in response to currently prevailing market forces.