

Consumer Price Index

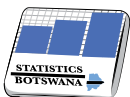
February 2020

Private Bag 47
Maun
Tel: 371 5716
Fax: 686 4327

Private Bag 32
Ghanzi
Tel: 371 5723
Fax: 659 7506

Private Bag F193,
City of Francistown
Tel. 241 5848,
Fax. 241 7540

Private Bag 0024, Gaborone
Tel: 3671300
Fax: 3952201
Toll Free: 0800 600 200



STATISTICS BOTSWANA

E-mail: info@statsbots.org.bw
Website: <http://www.statsbots.org.bw>

Contact Statistician:
Phaladi Labobedi

CONTENTS

| | |
|--|-----------|
| SECTION 1: HEADLINE INFLATION | 1 |
| SECTION 2: CORE INFLATION | 1 |
| GLOSSARY | 12 |

CHARTS

| | |
|---|----------|
| CHART 1: NATIONAL RATES OF INFLATION | 2 |
| CHART 2: MONTHLY CHANGES IN THE CONSUMER PRICE INDEX | 2 |
| CHART 3: NON-TRADEABLES INFLATION RATES | 2 |
| CHART 4: TRADEABLES INFLATION RATES | 2 |
| CHART 5: CONTRIBUTIONS OF GROUPS TO ANNUAL CPI RATE | 3 |

TABLES

| | |
|---|-----------|
| TABLE 1 : CONSUMER PRICE INDEX (DECEMBER 2018 =100.0) | 4 |
| TABLE 2: NATIONAL CONSUMER PRICE GROUP & SECTION INDICES (DECEMBER 2018 = 100.0) | 6 |
| TABLE 3: CONSUMER PRICE INDEX BY TRADABILITY (DECEMBER 2018 = 100.0) | 8 |
| TABLE 4: CORE INFLATION RATES BY EXCLUSION AND TRIMMED MEAN | 9 |
| TABLE 5: CONTRIBUTIONS OF GROUPS TO ANNUAL CPI RATE | 10 |
| TABLE 6: AVERAGE ANNUAL INFLATION (DECEMBER 2018 = 100.0) | 10 |

COMMENTARY

SECTION 1: HEADLINE INFLATION

The annual inflation rate in February 2020 was 2.2 percent, the same rate as in January 2020. The main contributors to the February annual inflation rate were; Food & Non-Alcoholic Beverages (0.5 of a percentage point), Miscellaneous Goods & Services (0.5 of a percentage point), Housing, Water, Electricity, Gas & Other Fuels (0.3 of a percentage point), Education (0.2 of percentage point) and Alcoholic Beverages & Tobacco (0.2 of a percentage point), see **Table 5**.

The inflation rates for regions between January 2020 and February 2020 indicated that Cities & Towns decreased to 2.3 percent from 2.4 percent recorded in January 2020. Rural Villages' rate rose from 1.8 percent to 1.9 percent in February 2020 while Urban Villages' remained constant at 2.3 percent during the period under review, refer to **Table 1**.

The national Consumer Price Index was 102.7 in February 2020, recording an increase of 0.1 percent, from 102.6 recorded in January 2020. The Urban Villages' moved from 102.6 in January to 102.8 in February registering a rise of 0.2 percent. The Cities & Towns recorded a rise of 0.1 percent over the two months. The Rural Villages Index realised an increase of 0.1 percent over the two periods, moving from 102.0 in January to 102.1 in February.

Group indices were generally moving at a steady pace between January 2020 and February 2020, recording changes of less than 1.0 percent, See **Table 1**.

The Food & Non-Alcoholic Beverages group index rose by 0.5 percent, from 103.7 in January 2020 to 104.2 in February 2020. This was attributed to a general increase in the constituent section indices, notably; Fruits (1.6 percent), Meat (1.1 percent) and Vegetables (1.0 percent), refer to **Table 2**.

The Furnishing, Household Equipment & Routine Maintenance group Index moved from 103.0 in January 2020 to 103.3 in February 2020, recording an increase of 0.3 percent. This was credited to a general increase in the constituent section indices, see **Table 2**.

The All-Tradeables index was 102.8 in February 2020, registering a growth of 0.2 percent from 102.6 recorded in January 2020. The Domestic Tradeables Index recorded a rise of 0.4 percent, advancing from 105.0 in January to 105.4 in February 2020. The Imported Tradeables Index realized an increase of 0.2 percent, moving from 101.8 in January to 102.0 in February 2020. The Non-Tradeables Index advanced from 102.5 in January to 102.6 in February 2020, refer to **Table 3**.

All-Tradeables inflation rate was 2.2 percent in February 2020, the same rate as in January 2020. The Domestic Tradeables inflation rate moved from 4.2 percent in January to 4.4 percent in February recording a rise of 0.2 of a percentage point. The Non-Tradeables inflation registered a decline of 0.1 of a percentage point from 2.4 percent in January to 2.3 percent in February, while the Imported Tradeables inflation realized a drop of 0.1 of percentage point from 1.5 percent in January 2020 to 1.4 percent in February 2020, refer to **Table 3** below.

SECTION 2: CORE INFLATION

The Trimmed Mean Core Inflation rate in February 2020 was 1.9 percent, the same rate as in January 2020. The February 2020 Core Inflation rate by exclusion also remained unchanged at 2.7 percent, see **Table 4**.

CHARTS

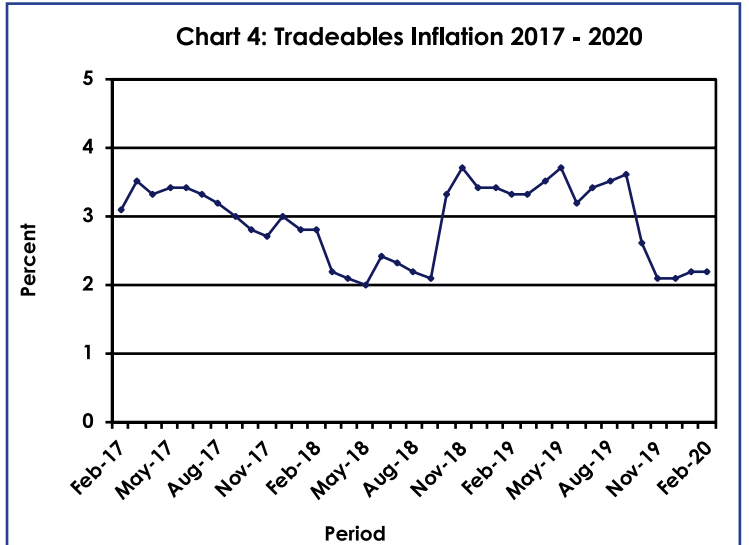
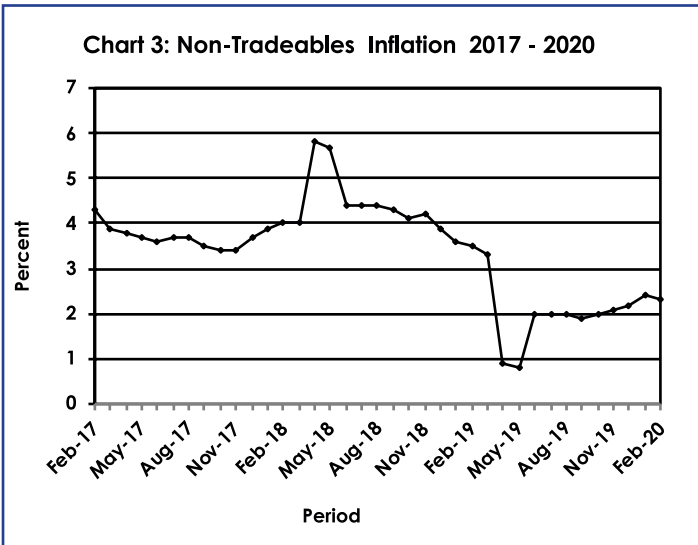
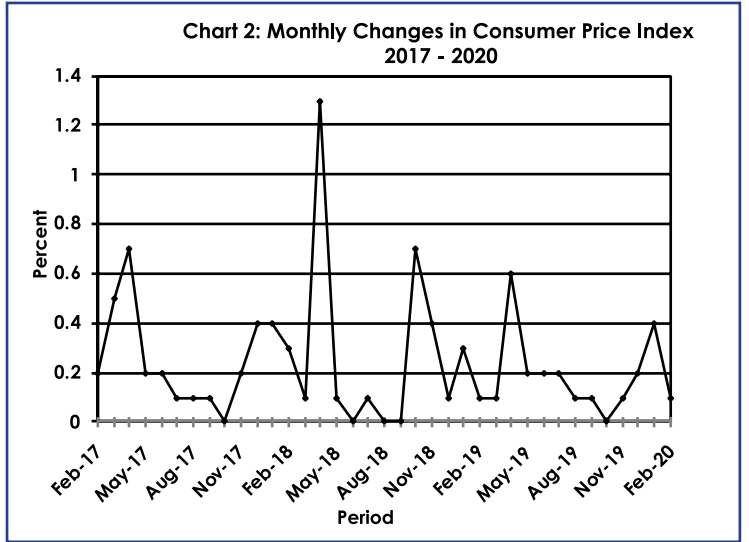
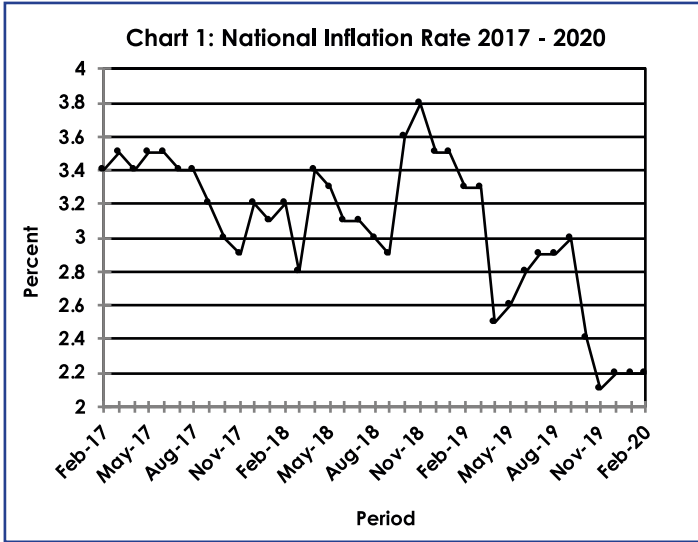
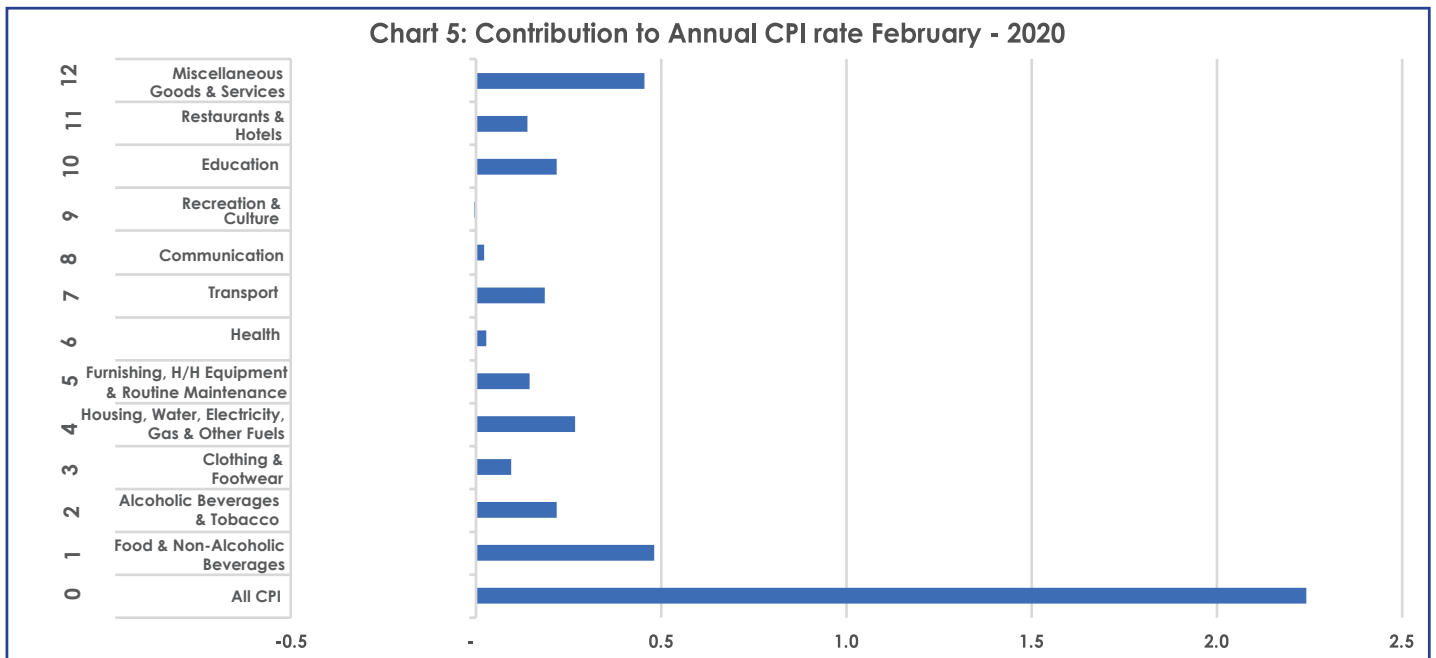


Chart 5: Contribution to Annual CPI rate February - 2020



BS
 Dr. Burton S. Mguni
 Statistician General
 13th March 2020

TABLES

TABLE 1 : CONSUMER PRICE INDEX (DECEMBER 2018 =100.0)

| | | Food | Alcohol and Tobacco | Clothing and Footwear | Housing | Furniture etc | Health | Transport | Communi-cation | Rec. & Culture | Education | Rest. & Hotels | Miscella-neous |
|--------------------|------|------------|---------------------|-----------------------|------------|---------------|------------|------------|----------------|----------------|------------|----------------|----------------|
| Weights | | 13.55 | 4.34 | 5.95 | 17.45 | 4.85 | 3.38 | 23.43 | 6.94 | 2.82 | 4.60 | 3.66 | 9.01 |
| 2017 | Jan | 100.0 | 96.8 | 96.5 | 91.5 | 96.1 | 97.6 | 86.8 | 108.9 | 96.8 | 94.7 | 94.2 | 91.5 |
| | Feb | 100.4 | 97.4 | 96.8 | 91.6 | 96.5 | 97.7 | 87.0 | 108.9 | 97.2 | 94.7 | 94.4 | 91.7 |
| | Mar | 100.9 | 97.9 | 97.0 | 92.0 | 96.9 | 97.8 | 87.9 | 108.9 | 97.4 | 94.7 | 94.8 | 92.0 |
| | Apr | 101.1 | 98.5 | 97.2 | 95.5 | 97.0 | 97.9 | 88.0 | 108.9 | 98.1 | 94.7 | 95.0 | 92.2 |
| | May | 101.5 | 99.0 | 97.4 | 95.5 | 97.2 | 98.0 | 88.1 | 109.0 | 98.1 | 94.7 | 95.3 | 92.3 |
| | Jun | 101.4 | 99.0 | 97.5 | 95.7 | 97.4 | 98.6 | 88.3 | 109.2 | 98.2 | 94.8 | 95.5 | 93.2 |
| | Jul | 101.6 | 99.1 | 97.9 | 95.8 | 97.6 | 98.7 | 88.3 | 109.2 | 98.3 | 94.8 | 95.9 | 93.2 |
| | Aug | 101.5 | 99.2 | 98.1 | 95.8 | 97.7 | 98.8 | 88.5 | 109.2 | 98.4 | 94.8 | 96.2 | 93.2 |
| | Sept | 100.9 | 99.3 | 98.3 | 96.4 | 97.9 | 98.8 | 88.6 | 110.3 | 98.3 | 94.8 | 96.4 | 93.3 |
| | Oct | 100.8 | 99.1 | 98.4 | 96.3 | 98.0 | 98.8 | 88.6 | 110.3 | 98.4 | 94.9 | 96.6 | 93.4 |
| | Nov | 100.7 | 99.0 | 98.4 | 96.3 | 98.1 | 98.9 | 89.4 | 110.3 | 98.3 | 94.9 | 96.6 | 93.4 |
| | Dec | 100.2 | 99.1 | 98.5 | 96.7 | 97.9 | 98.9 | 90.9 | 110.1 | 98.5 | 94.9 | 97.1 | 93.9 |
| 2018 | Jan | 100.4 | 99.1 | 98.6 | 96.8 | 98.1 | 99.0 | 91.2 | 110.2 | 98.7 | 99.9 | 97.4 | 94.2 |
| | Feb | 100.8 | 99.2 | 98.7 | 96.9 | 98.4 | 99.1 | 91.5 | 110.2 | 99.0 | 99.9 | 97.8 | 94.7 |
| | Mar | 100.9 | 99.3 | 98.9 | 97.2 | 99.0 | 99.2 | 91.4 | 110.3 | 99.4 | 100.0 | 97.9 | 94.9 |
| | Apr | 101.0 | 99.2 | 99.3 | 98.6 | 99.1 | 99.2 | 93.5 | 110.3 | 100.0 | 100.0 | 98.4 | 100.0 |
| | May | 100.9 | 99.5 | 99.5 | 98.7 | 99.2 | 99.4 | 93.6 | 110.3 | 100.1 | 100.0 | 98.6 | 100.1 |
| | Jun | 100.7 | 99.7 | 99.6 | 99.2 | 99.5 | 99.4 | 95.0 | 100.2 | 100.1 | 100.0 | 99.0 | 100.2 |
| | Jul | 100.5 | 99.9 | 99.9 | 99.2 | 99.6 | 99.5 | 95.1 | 100.2 | 100.2 | 100.0 | 99.4 | 100.3 |
| | Aug | 100.2 | 100.1 | 99.8 | 99.3 | 99.6 | 99.5 | 95.2 | 100.2 | 100.2 | 100.0 | 99.5 | 100.3 |
| | Sept | 99.9 | 100.1 | 99.8 | 99.7 | 100.0 | 99.7 | 95.0 | 100.2 | 100.2 | 100.0 | 99.7 | 100.2 |
| | Oct | 99.8 | 100.2 | 99.7 | 99.7 | 100.0 | 99.8 | 98.4 | 100.2 | 99.8 | 100.0 | 99.7 | 99.8 |
| | Nov | 99.9 | 100.2 | 99.8 | 99.9 | 100.1 | 99.9 | 99.8 | 100.2 | 99.9 | 100.0 | 99.7 | 99.8 |
| | Dec | 100.0 | 100.0 | 100.0 | 100.0 | 100.0 | 100.0 | 100.0 | 100.0 | 100.0 | 100.0 | 100.0 | 100.0 |
| 2019 | Jan | 100.4 | 99.8 | 100.2 | 100.1 | 100.2 | 100.1 | 100.3 | 100.0 | 100.1 | 103.0 | 100.0 | 100.3 |
| | Feb | 100.6 | 99.6 | 100.2 | 100.1 | 100.4 | 100.2 | 100.6 | 100.0 | 100.1 | 103.1 | 100.1 | 100.6 |
| | Mar | 101.0 | 99.9 | 100.3 | 100.3 | 100.6 | 100.3 | 100.5 | 100.0 | 100.4 | 103.1 | 100.6 | 100.4 |
| | Apr | 101.4 | 101.2 | 100.4 | 100.3 | 100.7 | 100.3 | 100.7 | 100.0 | 100.2 | 103.1 | 100.8 | 104.9 |
| | May | 102.0 | 102.4 | 100.5 | 100.4 | 100.8 | 100.4 | 100.8 | 100.0 | 100.2 | 103.1 | 101.1 | 104.9 |
| | Jun | 102.0 | 103.2 | 100.7 | 100.9 | 101.6 | 100.5 | 100.6 | 100.1 | 100.2 | 103.1 | 101.3 | 105.0 |
| | Jul | 102.1 | 103.5 | 100.8 | 101.0 | 101.8 | 100.6 | 100.9 | 100.1 | 100.3 | 103.1 | 101.6 | 105.4 |
| | Aug | 102.1 | 103.6 | 101.0 | 101.1 | 101.8 | 100.7 | 101.0 | 100.2 | 100.3 | 103.1 | 101.8 | 105.3 |
| | Sept | 102.4 | 103.8 | 101.0 | 101.2 | 102.1 | 100.6 | 100.9 | 100.2 | 100.3 | 103.1 | 102.1 | 105.3 |
| | Oct | 102.3 | 104.1 | 101.1 | 101.3 | 102.2 | 100.7 | 101.0 | 100.3 | 100.0 | 103.1 | 102.3 | 105.2 |
| | Nov | 102.5 | 104.2 | 101.3 | 101.3 | 102.4 | 100.8 | 101.2 | 100.4 | 100.0 | 103.1 | 102.4 | 105.3 |
| | Dec | 103.0 | 104.4 | 101.3 | 101.5 | 102.7 | 100.8 | 101.3 | 100.4 | 99.8 | 103.1 | 102.9 | 105.3 |
| 2020 | Jan | 103.7 | 104.5 | 101.7 | 101.6 | 103.0 | 101.0 | 101.3 | 100.4 | 99.8 | 107.9 | 103.7 | 105.5 |
| | Feb | 104.2 | 104.6 | 101.8 | 101.7 | 103.3 | 101.0 | 101.4 | 100.3 | 100.0 | 108.0 | 103.9 | 105.6 |
| % Change on | | | | | | | | | | | | | |
| Last month | | 0.5 | 0.1 | 0.1 | 0.1 | 0.3 | 0.0 | 0.1 | (0.0) | 0.2 | 0.0 | 0.2 | 0.1 |

Consumer Price Index-February 2020

TABLE 1: CONSUMER PRICE INDEX (Cont.)

| | | All Items Index | National Inflation Rate | Monthly Change | Towns & Cities Index | Urban Village Index | Rural Villages Index | Annual Inflation | | |
|-------------------------------|------|-----------------|-------------------------|----------------|----------------------|---------------------|----------------------|------------------|----------------|-------|
| | | | | | | | | Towns & Cities | Urban Villages | Rural |
| | | 100.0 | % | % | 0.38 | 0.41 | 0.21 | % | % | % |
| 2017 | Jan | 94.0 | 3.1 | 0.4 | 93.1 | 94.3 | 95.1 | 3.1 | 2.8 | 3.6 |
| | Feb | 94.2 | 3.4 | 0.2 | 93.3 | 94.6 | 95.5 | 3.5 | 2.9 | 3.8 |
| | Mar | 94.7 | 3.5 | 0.5 | 93.8 | 95.0 | 95.9 | 3.6 | 3.0 | 4.2 |
| | Apr | 95.4 | 3.4 | 0.7 | 94.4 | 95.8 | 96.5 | 3.3 | 3.0 | 4.2 |
| | May | 95.6 | 3.5 | 0.2 | 94.6 | 96.0 | 96.8 | 3.4 | 3.1 | 4.1 |
| | Jun | 95.8 | 3.5 | 0.2 | 94.8 | 96.2 | 96.8 | 3.4 | 3.3 | 3.9 |
| | Jul | 95.9 | 3.4 | 0.1 | 95.0 | 96.3 | 97.0 | 3.5 | 3.2 | 3.7 |
| | Aug | 96.0 | 3.4 | 0.1 | 95.0 | 96.4 | 97.1 | 3.4 | 3.2 | 3.6 |
| | Sept | 96.1 | 3.2 | 0.1 | 95.2 | 96.3 | 97.2 | 3.2 | 3.0 | 3.4 |
| | Oct | 96.1 | 3.0 | 0.0 | 95.2 | 96.2 | 97.3 | 3.0 | 2.7 | 3.3 |
| | Nov | 96.2 | 2.9 | 0.2 | 95.5 | 96.4 | 97.4 | 3.1 | 2.6 | 3.0 |
| | Dec | 96.6 | 3.2 | 0.4 | 96.0 | 96.6 | 97.6 | 3.6 | 2.9 | 3.1 |
| 2018 | Jan | 97.0 | 3.1 | 0.4 | 96.4 | 97.0 | 97.8 | 3.6 | 2.9 | 2.8 |
| | Feb | 97.2 | 3.2 | 0.3 | 96.7 | 97.3 | 98.1 | 3.6 | 2.9 | 2.7 |
| | Mar | 97.4 | 2.8 | 0.1 | 96.8 | 97.5 | 98.1 | 3.3 | 2.6 | 2.3 |
| | Apr | 98.7 | 3.4 | 1.3 | 98.4 | 98.7 | 99.1 | 4.2 | 3.1 | 2.7 |
| | May | 98.7 | 3.3 | 0.1 | 98.5 | 98.8 | 99.1 | 4.1 | 3.0 | 2.5 |
| | Jun | 98.8 | 3.1 | 0.0 | 98.6 | 98.8 | 99.0 | 4.0 | 2.7 | 2.3 |
| | Jul | 98.8 | 3.1 | 0.1 | 98.7 | 98.9 | 99.1 | 3.9 | 2.7 | 2.1 |
| | Aug | 98.8 | 3.0 | (0.0) | 98.6 | 98.9 | 99.1 | 3.8 | 2.6 | 2.0 |
| | Sept | 98.9 | 2.9 | 0.0 | 98.7 | 98.9 | 99.1 | 3.6 | 2.7 | 2.0 |
| | Oct | 99.5 | 3.6 | 0.7 | 99.5 | 99.5 | 99.7 | 4.4 | 3.4 | 2.5 |
| | Nov | 99.9 | 3.8 | 0.4 | 99.9 | 99.8 | 100.0 | 4.7 | 3.6 | 2.6 |
| | Dec | 100.0 | 3.5 | 0.1 | 100.0 | 100.0 | 100.0 | 4.2 | 3.5 | 2.5 |
| 2019 | Jan | 100.3 | 3.5 | 0.3 | 100.4 | 100.3 | 100.2 | 4.1 | 3.4 | 2.4 |
| | Feb | 100.5 | 3.3 | 0.1 | 100.6 | 100.5 | 100.3 | 4.0 | 3.2 | 2.3 |
| | Mar | 100.6 | 3.3 | 0.1 | 100.6 | 100.6 | 100.3 | 3.9 | 3.2 | 2.2 |
| | Apr | 101.2 | 2.5 | 0.6 | 101.2 | 101.3 | 100.8 | 2.9 | 2.6 | 1.7 |
| | May | 101.3 | 2.6 | 0.2 | 101.4 | 101.5 | 100.9 | 2.9 | 2.7 | 1.8 |
| | Jun | 101.5 | 2.8 | 0.2 | 101.6 | 101.6 | 101.1 | 3.0 | 2.9 | 2.1 |
| | Jul | 101.7 | 2.9 | 0.2 | 101.8 | 101.8 | 101.2 | 3.1 | 3.0 | 2.1 |
| | Aug | 101.7 | 2.9 | 0.1 | 101.8 | 101.9 | 101.3 | 3.2 | 3.1 | 2.2 |
| | Sept | 101.8 | 3.0 | 0.1 | 101.9 | 102.0 | 101.4 | 3.2 | 3.1 | 2.3 |
| | Oct | 101.9 | 2.4 | 0.0 | 102.0 | 102.0 | 101.4 | 2.5 | 2.5 | 1.8 |
| | Nov | 102.0 | 2.1 | 0.1 | 102.1 | 102.1 | 101.5 | 2.2 | 2.3 | 1.5 |
| | Dec | 102.2 | 2.2 | 0.2 | 102.3 | 102.3 | 101.6 | 2.3 | 2.3 | 1.6 |
| 2020 | Jan | 102.6 | 2.2 | 0.4 | 102.8 | 102.6 | 102.0 | 2.4 | 2.3 | 1.8 |
| | Feb | 102.7 | 2.2 | 0.1 | 102.9 | 102.8 | 102.1 | 2.3 | 2.3 | 1.9 |
| % Change on last month | | 0.1 | | | 0.1 | 0.2 | 0.1 | | | |

TABLE 2: NATIONAL CONSUMER PRICE GROUP AND SECTION INDICES (DECEMBER 2018=100.0)

| | Group Section | Weights | This month Feb 2020 | Last month Jan 2020 | 3 months ago Nov 2019 | 6 months ago Aug 2019 | 12 months ago Feb 2019 | Percentage Change on: | | | |
|----------|--|--------------|------------------------|------------------------|--------------------------|--------------------------|---------------------------|-----------------------|--------------|--------------|---------------|
| | | | | | | | | Last month | 3 months ago | 6 months ago | 12 months ago |
| 1 | Food & Non-Alcoholic Beverages | 13.55 | 104.2 | 103.7 | 102.5 | 102.1 | 100.6 | 0.5 | 1.6 | 2.0 | 3.5 |
| 1.1 | Bread & Cereals | 4.26 | 104.8 | 104.7 | 104.0 | 102.9 | 100.6 | 0.1 | 0.7 | 1.8 | 4.2 |
| 1.2 | Meat (Fresh, Chilled & Frozen) | 2.36 | 108.5 | 107.4 | 103.6 | 102.0 | 100.9 | 1.1 | 4.7 | 6.4 | 7.6 |
| 1.3 | Fish (Fresh, Chilled & Frozen) | 0.18 | 105.6 | 105.3 | 104.0 | 103.3 | 100.2 | 0.3 | 1.5 | 2.2 | 5.3 |
| 1.4 | Milk, Cheese & Milk Products | 0.98 | 102.3 | 101.7 | 101.9 | 102.3 | 100.2 | 0.5 | 0.4 | (0.0) | 2.0 |
| 1.5 | Oils & Fats | 0.92 | 101.0 | 100.8 | 100.8 | 100.5 | 99.8 | 0.2 | 0.2 | 0.4 | 1.1 |
| 1.6 | Fruits | 0.78 | 105.6 | 103.9 | 100.9 | 101.7 | 101.4 | 1.6 | 4.6 | 3.8 | 4.1 |
| 1.7 | Vegetables | 1.08 | 103.1 | 102.1 | 102.3 | 103.4 | 100.7 | 1.0 | 0.8 | (0.3) | 2.4 |
| 1.8 | Sugar, Jam, Honey, Chocolate & Confectionery | 1.11 | 98.8 | 98.6 | 98.0 | 99.1 | 99.9 | 0.2 | 0.8 | (0.4) | (1.1) |
| 1.9 | Food Not Elsewhere Classified | 0.54 | 104.0 | 103.3 | 103.7 | 103.6 | 101.3 | 0.6 | 0.3 | 0.3 | 2.6 |
| 1.10 | Coffee, Tea & Cocoa | 0.73 | 102.3 | 102.2 | 101.8 | 101.4 | 100.8 | 0.1 | 0.5 | 0.9 | 1.5 |
| 1.11 | Mineral Waters, Soft Drinks, Fruits & Vegetables Juices | 0.62 | 103.1 | 102.7 | 102.3 | 102.5 | 101.1 | 0.4 | 0.8 | 0.6 | 2.0 |
| 2 | Alcoholic Beverages & Tobacco | 4.34 | 104.6 | 104.5 | 104.2 | 103.6 | 99.6 | 0.1 | 0.5 | 1.0 | 5.0 |
| 2.1 | Alcoholic Beverages | 3.51 | 104.7 | 104.5 | 104.2 | 103.7 | 99.4 | 0.1 | 0.5 | 1.0 | 5.3 |
| 2.2 | Tobacco | 0.82 | 104.4 | 104.4 | 104.0 | 103.3 | 100.4 | 0.0 | 0.4 | 1.1 | 4.0 |
| 3 | Clothing & Footwear | 5.95 | 101.8 | 101.7 | 101.3 | 101.0 | 100.2 | 0.1 | 0.5 | 0.8 | 1.6 |
| 3.1 | Clothing | 2.60 | 102.2 | 102.2 | 101.8 | 101.4 | 100.2 | 0.0 | 0.4 | 0.8 | 2.0 |
| 3.2 | Other Articles of Clothing | 0.72 | 101.7 | 101.3 | 100.9 | 100.6 | 100.4 | 0.5 | 0.8 | 1.1 | 1.4 |
| 3.3 | Cleaning, Repair & Hire | 0.61 | 103.0 | 102.9 | 101.2 | 101.1 | 100.0 | 0.1 | 1.8 | 1.8 | 3.0 |
| 3.4 | Footwear | 2.03 | 100.9 | 100.8 | 100.7 | 100.6 | 100.1 | 0.1 | 0.2 | 0.4 | 0.8 |
| 4 | Housing, Water, Electricity, Gas & Other Fuels | 17.45 | 101.7 | 101.6 | 101.3 | 101.1 | 100.1 | 0.1 | 0.4 | 0.6 | 1.5 |
| 4.1 | Rent Paid by Tenants | 7.78 | 102.5 | 102.5 | 101.9 | 101.5 | 100.0 | 0.0 | 0.6 | 1.0 | 2.5 |
| 4.2 | Materials for Maintenance & Repair of Dwellings | 3.83 | 102.3 | 102.1 | 102.0 | 101.6 | 100.6 | 0.3 | 0.3 | 0.7 | 1.7 |
| 4.3 | Water Supply & Miscellaneous Services | 1.96 | 100.0 | 100.0 | 100.0 | 100.0 | 100.0 | 0.0 | 0.0 | 0.0 | 0.0 |
| 4.4 | Electricity, Gas & Other Fuels | 3.89 | 100.1 | 100.1 | 100.1 | 100.0 | 99.9 | 0.0 | 0.0 | 0.0 | 0.1 |
| 5 | Furnishing, H/H Equipment & Routine Maintenance | 4.85 | 103.3 | 103.0 | 102.4 | 101.8 | 100.4 | 0.3 | 1.0 | 1.5 | 3.0 |
| 5.1 | Furniture & Furnishing | 1.35 | 102.9 | 102.2 | 101.7 | 101.5 | 100.2 | 0.7 | 1.2 | 1.4 | 2.8 |
| 5.2 | Carpets & Other Floor Coverings | 0.27 | 101.9 | 101.8 | 101.2 | 100.7 | 100.2 | 0.2 | 0.7 | 1.2 | 1.7 |
| 5.3 | Household Textiles | 0.29 | 102.6 | 102.5 | 101.7 | 101.0 | 100.1 | 0.1 | 0.8 | 1.6 | 2.5 |
| 5.4 | Household Appliances | 0.72 | 100.5 | 100.3 | 99.9 | 99.9 | 100.2 | 0.2 | 0.5 | 0.6 | 0.3 |
| 5.5 | Glassware, Tableware & Household Utensils | 0.23 | 103.4 | 103.1 | 102.7 | 101.8 | 100.3 | 0.3 | 0.7 | 1.5 | 3.0 |
| 5.6 | Small Tools, Miscellaneous Accessories | 0.04 | 102.9 | 102.9 | 102.6 | 102.3 | 100.7 | 0.1 | 0.3 | 0.7 | 2.2 |
| 5.7 | Goods & Services for Household Maintenance | 1.95 | 105.0 | 104.7 | 103.9 | 102.9 | 100.6 | 0.3 | 1.1 | 2.0 | 4.3 |
| 6 | Health | 3.38 | 101.0 | 101.0 | 100.8 | 100.7 | 100.2 | 0.0 | 0.2 | 0.3 | 0.8 |
| 6.1 | Medical Products, Applications & Equipments | 0.98 | 102.3 | 102.4 | 101.7 | 101.5 | 100.5 | (0.1) | 0.6 | 0.8 | 1.8 |
| 6.2 | Out-Patient Services | 0.93 | 101.2 | 101.0 | 101.0 | 100.8 | 100.0 | 0.2 | 0.2 | 0.4 | 1.2 |
| 6.3 | Hospital Services | 1.47 | 100.0 | 100.0 | 100.0 | 100.0 | 100.0 | 0.0 | 0.0 | 0.0 | 0.0 |

TABLE 2: NATIONAL CONSUMER PRICE GROUP AND SECTION INDICES (DECEMBER 2018=100.0) (Cont.)

| | Group Section | Weights | This month Feb 2020 | Last month Jan 2020 | 3 months ago Nov 2019 | 6 months ago Aug 2019 | 12 months ago Feb 2019 | Percentage Change on: | | | |
|-----------|---|--------------|------------------------|------------------------|--------------------------|--------------------------|---------------------------|-----------------------|--------------|--------------|---------------|
| | | | | | | | | Last month | 3 months ago | 6 months ago | 12 months ago |
| 7 | Transport | 23.43 | 101.4 | 101.3 | 101.2 | 101.0 | 100.6 | 0.1 | 0.1 | 0.3 | 0.8 |
| 7.1 | Purchase of Vehicles | 5.74 | 104.4 | 104.2 | 104.1 | 103.3 | 102.2 | 0.2 | 0.3 | 1.1 | 2.2 |
| 7.2 | Operation of Personal Transport | 12.56 | 100.4 | 100.4 | 100.4 | 100.3 | 100.1 | 0.0 | 0.1 | 0.1 | 0.4 |
| 7.3 | Transport Services | 5.13 | 100.1 | 100.1 | 100.1 | 100.1 | 100.0 | 0.0 | 0.0 | 0.0 | 0.1 |
| 8 | Communication | 6.94 | 100.3 | 100.4 | 100.4 | 100.2 | 100.0 | (0.0) | (0.1) | 0.1 | 0.3 |
| 8.1 | Postal Services | 0.21 | 100.0 | 100.0 | 100.0 | 100.0 | 100.0 | 0.0 | 0.0 | 0.0 | 0.0 |
| 8.2 | Telephone & Telefax Equipment | 1.13 | 102.0 | 102.2 | 102.3 | 101.4 | 100.0 | (0.3) | (0.4) | 0.6 | 2.0 |
| 8.3 | Telephone & Telefax Services | 5.60 | 100.0 | 100.0 | 100.0 | 100.0 | 100.0 | 0.0 | 0.0 | 0.0 | 0.0 |
| 9 | Recreation & Culture | 2.82 | 100.0 | 99.8 | 100.0 | 100.3 | 100.1 | 0.2 | (0.0) | (0.3) | (0.2) |
| 9.1 | Audio Visual, Photographic & Information Processing Equipment | 2.10 | 99.4 | 99.2 | 99.6 | 100.0 | 100.2 | 0.2 | (0.2) | (0.6) | (0.7) |
| 9.2 | Other Recreational Items & Equipments | 0.30 | 101.9 | 101.6 | 101.2 | 101.0 | 100.1 | 0.3 | 0.7 | 0.9 | 1.8 |
| 9.3 | Recreational & Cultural Services | 0.31 | 99.9 | 99.9 | 99.8 | 99.8 | 100.0 | 0.0 | 0.1 | 0.1 | (0.1) |
| 9.4 | Newspapers, Books & Stationary | 0.11 | 105.1 | 105.1 | 105.1 | 104.7 | 100.0 | 0.0 | (0.0) | 0.3 | 5.1 |
| 10 | Education | 4.60 | 108.0 | 107.9 | 103.1 | 103.1 | 103.1 | 0.0 | 4.7 | 4.7 | 4.7 |
| 10.1 | Pre-Primary & Primary Education | 1.89 | 108.3 | 108.3 | 103.4 | 103.4 | 103.3 | 0.0 | 4.8 | 4.8 | 4.8 |
| 10.2 | Secondary & Tertiary Education | 2.70 | 107.7 | 107.7 | 103.0 | 103.0 | 102.9 | 0.0 | 4.6 | 4.6 | 4.7 |
| 11 | Restaurants & Hotels | 3.66 | 103.9 | 103.7 | 102.4 | 101.8 | 100.1 | 0.2 | 1.4 | 2.1 | 3.8 |
| 11.1 | Restaurants, Cafes & the Like | 3.02 | 104.0 | 103.7 | 102.4 | 101.7 | 100.1 | 0.3 | 1.6 | 2.3 | 3.9 |
| 11.2 | Accommodation Services | 0.64 | 103.5 | 103.4 | 102.7 | 102.2 | 100.2 | 0.1 | 0.8 | 1.3 | 3.3 |
| 12 | Miscellaneous Goods & Services | 9.01 | 105.6 | 105.5 | 105.3 | 105.3 | 100.6 | 0.1 | 0.3 | 0.3 | 5.0 |
| 12.1 | Personal Care | 2.33 | 101.3 | 101.2 | 100.7 | 101.1 | 100.6 | 0.2 | 0.6 | 0.3 | 0.8 |
| 12.2 | Personal Effects Not Elsewhere Classified | 0.22 | 100.6 | 100.4 | 99.9 | 100.1 | 100.0 | 0.1 | 0.7 | 0.4 | 0.6 |
| 12.3 | Social Protection | 0.13 | 108.2 | 108.2 | 101.6 | 101.6 | 101.6 | 0.0 | 6.6 | 6.6 | 6.6 |
| 12.4 | Insurance | 3.62 | 111.5 | 111.5 | 112.1 | 111.9 | 100.9 | 0.0 | (0.5) | (0.4) | 10.4 |
| 12.5 | Financial Services | 1.09 | 101.4 | 101.2 | 101.0 | 100.9 | 100.2 | 0.2 | 0.4 | 0.5 | 1.2 |
| 12.6 | Taxes, Licences & Fees | 1.61 | 102.0 | 101.6 | 100.7 | 100.4 | 100.0 | 0.4 | 1.3 | 1.6 | 2.0 |
| | All-Items Index | 100.0 | 102.7 | 102.6 | 102.0 | 101.7 | 100.5 | 0.1 | 0.7 | 1.0 | 2.2 |

Consumer Price Index-February 2020

TABLE 3: CONSUMER PRICE INDEX BY TRADEABILITY (DECEMBER 2018 = 100.0)

| | | All Items | | Non-Tradable | | Domestic Tradable | | Imported Tradable | | All Tradable | |
|-------------------------------|------|---------------|------------|--------------|------------|-------------------|-------------|-------------------|------------|--------------|------------|
| | | Index | Inflation | Index | Inflation | Index | Inflation | Index | Inflation | Index | Inflation |
| Weights | | 100.00 | | 42.29 | | 15.46 | | 42.26 | | 57.71 | |
| 2017 | Jan | 94.0 | 3.1 | 93.1 | 4.3 | 98.8 | 4.3 | 92.6 | 1.7 | 94.5 | 2.6 |
| | Feb | 94.2 | 3.4 | 93.2 | 4.3 | 99.3 | 4.3 | 92.9 | 2.4 | 94.8 | 3.1 |
| | Mar | 94.7 | 3.5 | 93.4 | 3.9 | 99.7 | 4.6 | 93.6 | 2.9 | 95.4 | 3.5 |
| | Apr | 95.4 | 3.4 | 94.9 | 3.8 | 100.0 | 4.3 | 93.8 | 2.7 | 95.7 | 3.3 |
| | May | 95.6 | 3.5 | 95.0 | 3.7 | 100.2 | 4.3 | 94.0 | 2.9 | 95.9 | 3.4 |
| | Jun | 95.8 | 3.5 | 95.4 | 3.6 | 100.1 | 4.2 | 94.2 | 2.9 | 96.0 | 3.4 |
| | Jul | 95.9 | 3.4 | 95.6 | 3.7 | 99.9 | 3.8 | 94.4 | 3.0 | 96.1 | 3.3 |
| | Aug | 96.0 | 3.4 | 95.6 | 3.7 | 99.8 | 3.4 | 94.6 | 3.1 | 96.2 | 3.2 |
| | Sept | 96.1 | 3.2 | 95.9 | 3.5 | 99.2 | 2.6 | 94.7 | 3.1 | 96.1 | 3.0 |
| | Oct | 96.1 | 3.0 | 96.0 | 3.4 | 99.1 | 2.2 | 94.8 | 3.0 | 96.1 | 2.8 |
| | Nov | 96.2 | 2.9 | 95.9 | 3.4 | 98.9 | 1.6 | 95.2 | 3.1 | 96.4 | 2.7 |
| | Dec | 96.6 | 3.2 | 96.3 | 3.7 | 98.9 | 1.3 | 95.8 | 3.7 | 96.8 | 3.0 |
| 2018 | Jan | 97.0 | 3.1 | 96.7 | 3.9 | 99.3 | 0.5 | 96.1 | 3.8 | 97.1 | 2.8 |
| | Feb | 97.2 | 3.2 | 96.9 | 4.0 | 99.6 | 0.3 | 96.4 | 3.8 | 97.4 | 2.8 |
| | Mar | 97.4 | 2.8 | 97.1 | 4.0 | 99.8 | 0.1 | 96.5 | 3.1 | 97.5 | 2.2 |
| | Apr | 98.7 | 3.4 | 100.4 | 5.8 | 99.9 | -0.1 | 96.7 | 3.1 | 97.7 | 2.1 |
| | May | 98.7 | 3.3 | 100.5 | 5.7 | 100.0 | -0.2 | 96.8 | 3.0 | 97.7 | 2.0 |
| | Jun | 98.8 | 3.1 | 99.7 | 4.4 | 99.9 | -0.2 | 97.5 | 3.6 | 98.2 | 2.4 |
| | Jul | 98.8 | 3.1 | 99.8 | 4.4 | 99.9 | -0.1 | 97.6 | 3.4 | 98.3 | 2.3 |
| | Aug | 98.8 | 3.0 | 99.8 | 4.4 | 99.8 | 0.0 | 97.6 | 3.2 | 98.3 | 2.2 |
| | Sept | 98.9 | 2.9 | 100.0 | 4.3 | 99.8 | 0.6 | 97.5 | 2.9 | 98.2 | 2.1 |
| | Oct | 99.5 | 3.6 | 99.9 | 4.1 | 99.7 | 0.7 | 99.1 | 4.5 | 99.3 | 3.3 |
| | Nov | 99.9 | 3.8 | 99.9 | 4.2 | 99.9 | 1.0 | 99.9 | 4.9 | 99.9 | 3.7 |
| | Dec | 100.0 | 3.5 | 100.0 | 3.9 | 100.0 | 1.1 | 100.0 | 4.4 | 100.0 | 3.4 |
| 2019 | Jan | 100.3 | 3.5 | 100.2 | 3.6 | 100.8 | 1.5 | 100.3 | 4.4 | 100.4 | 3.4 |
| | Feb | 100.5 | 3.3 | 100.2 | 3.5 | 100.9 | 1.4 | 100.5 | 4.2 | 100.6 | 3.3 |
| | Mar | 100.6 | 3.3 | 100.3 | 3.3 | 101.3 | 1.5 | 100.6 | 4.2 | 100.7 | 3.3 |
| | Apr | 101.2 | 2.5 | 101.3 | 0.9 | 101.8 | 1.9 | 100.8 | 4.3 | 101.1 | 3.5 |
| | May | 101.3 | 2.6 | 101.3 | 0.8 | 102.3 | 2.4 | 101.0 | 4.4 | 101.4 | 3.7 |
| | Jun | 101.5 | 2.8 | 101.6 | 2.0 | 102.5 | 2.6 | 101.0 | 3.6 | 101.4 | 3.2 |
| | Jul | 101.7 | 2.9 | 101.8 | 2.0 | 102.7 | 2.9 | 101.2 | 3.7 | 101.6 | 3.4 |
| | Aug | 101.7 | 2.9 | 101.8 | 2.0 | 103.0 | 3.2 | 101.3 | 3.7 | 101.7 | 3.5 |
| | Sept | 101.8 | 3.0 | 101.9 | 1.9 | 103.2 | 3.4 | 101.2 | 3.9 | 101.7 | 3.6 |
| | Oct | 101.9 | 2.4 | 101.9 | 2.0 | 103.3 | 3.5 | 101.3 | 2.3 | 101.8 | 2.6 |
| | Nov | 102.0 | 2.1 | 102.0 | 2.1 | 103.4 | 3.5 | 101.5 | 1.6 | 102.0 | 2.1 |
| | Dec | 102.2 | 2.2 | 102.2 | 2.2 | 103.7 | 3.7 | 101.6 | 1.6 | 102.1 | 2.1 |
| 2020 | Jan | 102.6 | 2.2 | 102.5 | 2.4 | 105.0 | 4.2 | 101.8 | 1.5 | 102.6 | 2.2 |
| | Feb | 102.7 | 2.2 | 102.6 | 2.3 | 105.4 | 4.4 | 102.0 | 1.4 | 102.8 | 2.2 |
| % Change on last month | | 0.1 | | 0.0 | | 0.4 | | 0.2 | | 0.2 | |

Consumer Price Index-February 2020

TABLE 4: CORE INFLATION RATES BY EXCLUSION AND TRIMMED MEAN

| Year | Month | Consumer Price Index (Trimmed Mean) (September 2016 = 100) | Core Monthly Inflation Rate (Trimmed Mean) (percentage) | Consumer Price Index (Excluding Administered Prices) (September 2016 = 100) | Core Monthly Inflation (Excluding Administered Prices) (percentage) |
|-------------|-------|--|---|---|---|
| 2017 | Jan | 93.5 | 2.7 | 96.6 | 3.9 |
| | Feb | 93.7 | 2.9 | 96.9 | 3.9 |
| | Mar | 94.2 | 3.1 | 97.2 | 3.9 |
| | Apr | 94.4 | 3.1 | 97.5 | 3.3 |
| | May | 94.5 | 3.1 | 97.7 | 3.4 |
| | Jun | 94.8 | 2.9 | 97.9 | 3.3 |
| | Jul | 94.9 | 2.9 | 98.1 | 3.3 |
| | Aug | 95.0 | 2.9 | 98.2 | 3.3 |
| | Sept | 95.1 | 2.7 | 98.2 | 3.0 |
| | Oct | 95.2 | 2.6 | 98.2 | 2.8 |
| | Nov | 95.4 | 2.5 | 98.2 | 2.4 |
| | Dec | 95.8 | 2.9 | 98.2 | 2.3 |
| 2018 | Jan | 96.1 | 2.8 | 98.7 | 2.2 |
| | Feb | 96.4 | 2.9 | 99.0 | 2.2 |
| | Mar | 96.6 | 2.6 | 99.2 | 2.0 |
| | Apr | 97.6 | 3.1 | 99.4 | 1.9 |
| | May | 97.7 | 3.0 | 99.5 | 1.8 |
| | Jun | 98.6 | 3.2 | 99.6 | 1.8 |
| | Jul | 98.7 | 3.1 | 99.7 | 1.7 |
| | Aug | 98.7 | 3.0 | 99.7 | 1.6 |
| | Sept | 98.8 | 2.9 | 99.8 | 1.6 |
| | Oct | 99.5 | 3.7 | 99.8 | 1.6 |
| | Nov | 99.6 | 3.8 | 99.9 | 1.7 |
| | Dec | 100.0 | 3.6 | 100.0 | 1.8 |
| 2019 | Jan | 100.4 | 3.6 | 100.4 | 1.8 |
| | Feb | 100.5 | 3.5 | 100.6 | 1.6 |
| | Mar | 100.6 | 3.5 | 100.8 | 1.6 |
| | Apr | 101.3 | 2.6 | 101.0 | 1.7 |
| | May | 101.5 | 2.7 | 101.4 | 1.9 |
| | Jun | 101.2 | 2.5 | 101.6 | 2.0 |
| | Jul | 101.5 | 2.6 | 101.8 | 2.1 |
| | Aug | 101.5 | 2.7 | 101.9 | 2.2 |
| | Sept | 101.6 | 2.7 | 102.1 | 2.3 |
| | Oct | 101.6 | 2.1 | 102.1 | 2.3 |
| | Nov | 101.7 | 1.7 | 102.3 | 2.4 |
| | Dec | 101.8 | 1.8 | 102.5 | 2.5 |
| 2020 | Jan | 102.2 | 1.9 | 103.2 | 2.7 |
| | Feb | 102.4 | 1.9 | 103.4 | 2.7 |

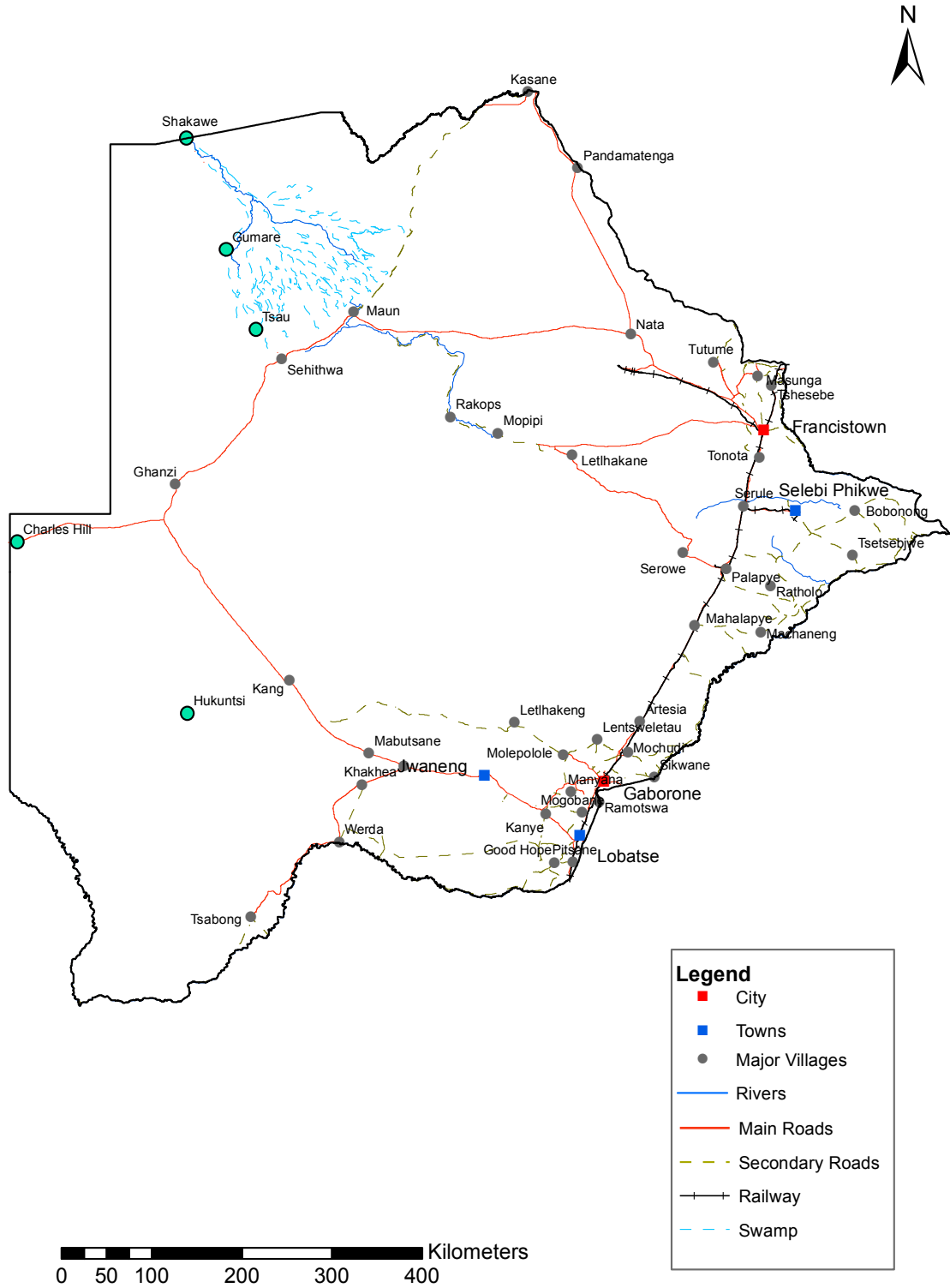
Table 5: Contributions of Groups to Annual CPI Rate

| Group Code | Group Name | CONTRIBUTIONS | |
|------------|---|---------------|--------|
| | | Jan-20 | Feb-20 |
| 0 | All Items CPI Rate | 2.2 | 2.2 |
| 1 | Food & Non-Alcoholic Beverages | 0.4 | 0.5 |
| 2 | Alcoholic Beverages & Tobacco | 0.2 | 0.2 |
| 3 | Clothing & Footwear | 0.1 | 0.1 |
| 4 | Housing, Water, Electricity, Gas & Other Fuels | 0.3 | 0.3 |
| 5 | Furnishing, Household Equipment & Routine Maintenance | 0.1 | 0.1 |
| 6 | Health | 0.0 | 0.0 |
| 7 | Transport | 0.2 | 0.2 |
| 8 | Communication | 0.0 | 0.0 |
| 9 | Recreation & Culture | 0.0 | 0.0 |
| 10 | Education | 0.2 | 0.2 |
| 11 | Restaurants & Hotels | 0.13 | 0.1 |
| 12 | Miscellaneous Goods & Services | 0.5 | 0.5 |

Table 6: Average Annual Inflation (December 2018=100)

| Group | Weights | 2009 | 2010 | 2011 | 2012 | 2013 | 2014 | 2015 | 2016 | 2017 | 2018 | 2019 |
|---|--------------|------------|------------|------------|------------|------------|------------|------------|------------|------------|------------|------------|
| 1 Food & Non-Alcoholic Beverages | 13.55 | 14.7 | 3.6 | 6.9 | 8.0 | 5.4 | 3.0 | 1.3 | 2.7 | 3.4 | (0.5) | 1.4 |
| 2 Alcoholic Beverages & Tobacco | 4.34 | 35.2 | 7.1 | 8.4 | 7.6 | 10.3 | 9.0 | 6.1 | 2.5 | 4.5 | 1.1 | 2.8 |
| 3 Clothing & Footwear | 5.95 | 8.4 | 8.0 | 8.9 | 7.5 | 6.3 | 6.0 | 7.6 | 6.5 | 3.2 | 1.8 | 1.3 |
| 4 Housing, Water, Electr. Gas & Other Fuels | 17.45 | 4.8 | 6.4 | 8.4 | 7.7 | 4.3 | 3.9 | 7.1 | 6.3 | 5.4 | 4.1 | 2.1 |
| 5 Furnishing, H/H Equipment & Routine Maintenance | 4.85 | 11.9 | 9.4 | 9.0 | 7.3 | 4.9 | 5.0 | 6.1 | 3.0 | 3.3 | 2.1 | 2.1 |
| 6 Health | 3.38 | 5.5 | 2.7 | 4.5 | 5.9 | 5.5 | 8.3 | 6.3 | 3.0 | 2.4 | 1.1 | 1.0 |
| 7 Transport | 23.43 | (8.4) | 12.1 | 13.2 | 10.8 | 7.3 | 1.2 | (5.1) | (2.7) | 1.6 | 7.5 | 6.2 |
| 8 Communication | 6.94 | (0.3) | 1.2 | (3.0) | (1.4) | 0.3 | 0.3 | 0.3 | 0.2 | 0.5 | (4.6) | (3.8) |
| 9 Recreation & Culture | 2.82 | 5.0 | 6.0 | 8.3 | 5.8 | 4.5 | 4.2 | 5.7 | 3.0 | 2.2 | 1.8 | 0.4 |
| 10 Education | 4.60 | 3.9 | 5.8 | 10.6 | 6.4 | 4.7 | 7.4 | 6.4 | 3.7 | 4.1 | 5.5 | 3.1 |
| 11 Restaurants & Hotels | 3.66 | 18.8 | 9.0 | 9.3 | 8.4 | 7.9 | 7.6 | 5.5 | 4.0 | 3.7 | 3.4 | 2.5 |
| 12 Miscellaneous Goods & Services | 9.01 | 3.8 | 7.0 | 5.3 | 2.0 | 1.2 | 5.2 | 7.2 | 7.5 | 3.9 | 6.4 | 5.3 |
| All-Items Index | 100.0 | 8.2 | 6.9 | 8.5 | 7.5 | 5.9 | 4.4 | 3.1 | 2.8 | 3.3 | 3.2 | 2.8 |

CPI AREA COVERAGE



Compiled and Prepared by Statistics Botswana, 2016

GLOSSARY

Consumer Price Index (CPI) is an index which measures price changes in goods and services with reference to a base period.

Inflation is a measurement of prices movement of goods and services in a particular country.

Domestic Tradeables refers to the goods and services which a country (Botswana) can export to other countries.

Imported Tradeables represents the goods and services which a country (Botswana) imports from other countries (trading partners).

Non-Tradeables refers to the goods and services which a country cannot either export or import to other countries.

All –Tradeables refers to the total of **Domestic** and **Imported Tradeables**.

Trimmed Mean Core Inflation- attempts to remove 8 percent (by weight) of the commodity sub-groups with the largest price changes at each of the ends of an ordered series of price changes in any given month.

Core inflation by Exclusion is a measure used to remove the volatility inherent in prices that are only adjusted periodically and not always in response to currently prevailing market forces.