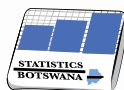




Copyrights © Statistics Botswana 2016

# Consumer Price Index

August 2016



## STATISTICS BOTSWANA

**Contact Statistician:**  
Phaladi Labobedi

Statistics Botswana. Private Bag 0024 Gaborone Botswana  
Tel: (+267) 367 1300. Fax: (+267) 395 2201. Email: [info@statsbots.org](mailto:info@statsbots.org). Website: [www.cso.gov.bw](http://www.cso.gov.bw)



## CONTENTS

### COMMENTARY

Section 1: Headline Inflation

Section 2: Core Inflation

### CHARTS

1. National Rates of Inflation, August 2013 – August 2016
2. Monthly Changes in the Cost-of-Living Index, August 2013 – August 2016
3. Non-Tradable Inflation Rates, August 2013 – August 2016
4. Tradable Inflation Rates, January 2014 – August 2016

### TABLES

1. Cost-of-Living Index Series (January 2014 – August 2016)
2. National Cost-of-Living Group and Section Indices
3. Cost-of-Living Index by Tradability (January 2014 – August 2016)
4. Core Inflation Rates
5. Annual Average Inflation Rates 2008 - 2015

### GLOSSARY

## COMMENTARY

### Section 1: **Headline Inflation**

The annual inflation rate in August 2016 was 2.6 percent, a drop of 0.1 of a percentage point on the July 2016 rate of 2.7 percent. The inflation rates for regions between July 2016 and August 2016 indicated that Cities & Towns went up to 2.6 percent from 2.5 percent, Urban Villages' decreased to 2.6 percent from 2.7 percent, and Rural Villages' went down to 2.9 percent from 3.0 percent.

The August national Consumer Price index moved from 187.4 in July to 187.7 in August 2016, a rise of 0.2 percent. The Rural Villages index realized an increase of 0.2 percent, moving from 194.2 to 194.5. The Cities & Towns' index rose by 0.2 percent, advancing from 185.6 in July to 185.9 in August, while Urban Villages' index registered an increase of 0.1 percent, moving from 186.0 to 186.3 between the two months.

Group indices were generally stable between July and August 2016, recording changes of less than 1.0 percent.

The Food & Non-Alcoholic Beverages index group went up to 202.8 in August from 202.1 in July, recording an increase of 0.3 percent. The rise was attributed to the increase in the section indices, notably; *Fruits (3.1 percent)*, *Sugar, Jam, Honey, Chocolate & Confectionery (1.7 percent)* and *Bread & Cereals (0.8 percent)*.

The Restaurants & Hotels index group rose from 248.9 in July to 249.6 in August, recording a rise of 0.3 percent. The rise was due to the general increase in the section indices.

The Clothing and Footwear index group went up from 185.7 to 186.2, recording an increase of 0.3 percent between July and August. The rise was attributed to the general increase in the section indices especially Clothing (0.4 percent).

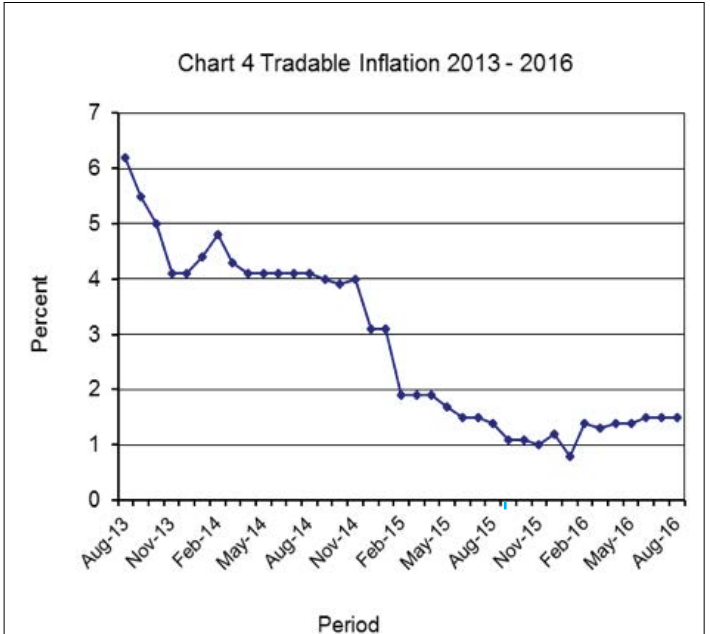
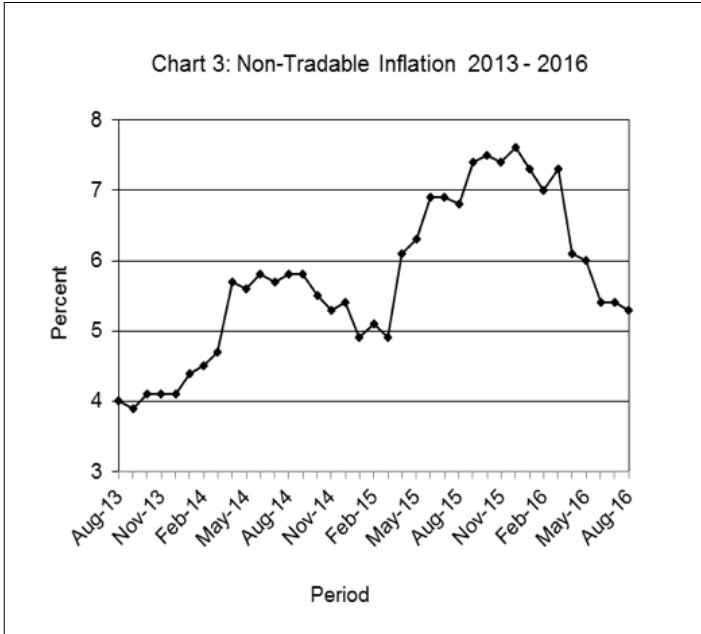
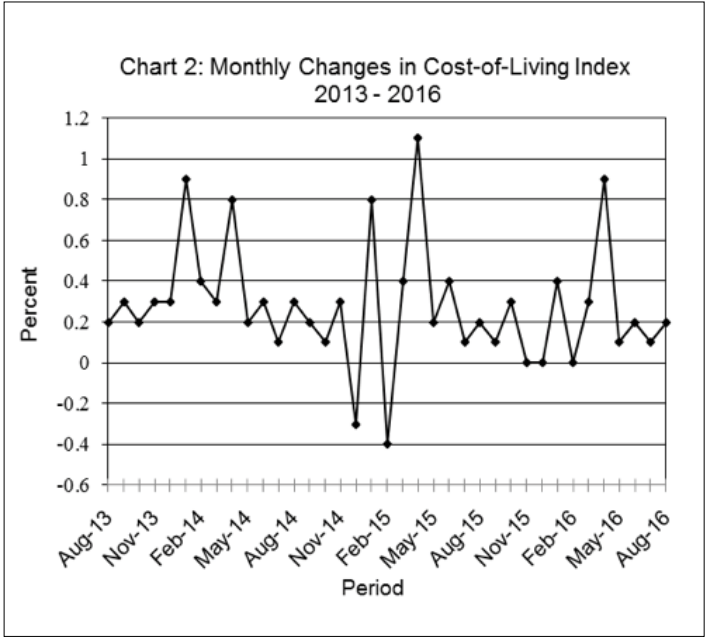
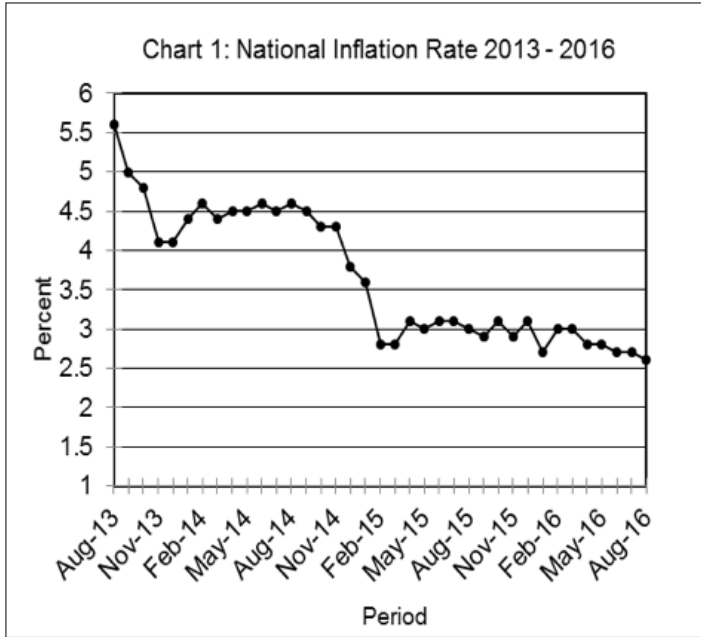
*All-Tradable* inflation rate was 1.5 percent in August which is the same rate as in July. The *Domestic Tradable* inflation rate increased from 2.8 percent in July to 3.0 percent in August. The *Imported Tradable* inflation rate declined from 0.7 percent to 0.6 percent between July and August. The *Non-Tradable* inflation rate decreased to 5.3 from 5.4 percent between July and August 2016.

The *All-Tradable index* moved from 190.1 in July to 190.5 in August registering a rise of 0.2 percent. The *Domestic Tradable index* moved from 213.2 in July to 213.9 in August, recording an increase of 0.3 percent. The *Imported Tradable index* went up by 0.1 percent moving from 178.0 to 178.3 between the two periods, while the *Non-Tradable index* advanced from 180.1 in July to 180.2 in August.

### Section 2: **Core Inflation**

The Trimmed Mean Core Inflation rate registered a decrease of 0.1 of a percentage point, moving from 2.5 percent to 2.4 percent. The Core Inflation rate by exclusion remained unchanged at 3.6 percent.

## Charts



**A.N. Majelantle**  
**Statistician General**  
**15<sup>th</sup> September 2016**

## TABLES

**TABLE 1: COST OF LIVING INDEX** (September 2006 =100.0)

		Food	Alcohol & Tobacco	Clothing & Footwear	Housing	Furniture etc	Health	Transport	Communi-cation	Rec. & Culture	Edu-cation	Rest. & Hotels	Miscel-laneous
<b>Weights</b>		<b>21.84</b>	<b>9.29</b>	<b>7.52</b>	<b>11.46</b>	<b>6.76</b>	<b>2.71</b>	<b>18.98</b>	<b>3.01</b>	<b>2.22</b>	<b>3.37</b>	<b>3.27</b>	<b>9.57</b>
<b>2014</b>	Jan	191.9	234.8	156.9	155.4	171.8	157.4	173.2	92.1	139.1	159.4	221.9	131.6
	Feb	192.6	239.9	157.7	155.5	171.9	157.6	173.3	92.1	139.3	159.4	223.1	131.6
	Mar	193.1	243.3	158.5	156.5	173.8	157.8	172.2	92.1	139.6	159.4	224.2	131.7
	Apr	193.8	245.9	159.1	158.4	174.0	158.8	172.3	92.1	141.6	159.4	225.2	137.7
	May	194.3	247.5	160.0	158.5	174.4	159.0	172.3	92.1	141.8	159.4	226.2	137.8
	Jun	194.6	247.8	161.1	159.2	176.1	162.4	172.3	92.1	141.9	159.4	226.7	137.9
	Jul	194.9	248.1	161.9	159.2	176.3	162.5	172.5	92.1	142.0	159.4	227.4	137.9
	Aug	195.0	248.2	162.3	159.3	177.0	162.8	174.1	92.1	142.3	159.4	228.5	138.1
	Sept	195.3	248.3	163.1	159.7	178.1	163.1	174.2	92.1	142.7	159.4	229.0	138.2
	Oct	195.5	248.6	163.9	159.8	178.4	163.1	174.3	92.1	142.7	159.4	229.4	138.2
	Nov	196.0	248.7	165.0	159.9	179.1	163.4	175.2	92.1	143.1	159.4	229.9	138.9
	Dec	196.3	248.6	166.1	161.4	180.0	163.5	170.7	92.1	143.5	159.4	230.3	138.9
<b>2015</b>	Jan	196.3	254.2	167.2	161.5	182.0	167.6	171.2	92.1	143.5	169.5	232.0	139.2
	Feb	196.7	256.7	169.2	161.3	183.5	167.7	163.8	92.1	143.9	169.5	235.7	139.5
	Mar	196.7	259.4	170.4	162.3	184.7	167.8	164.0	92.1	144.1	169.5	236.8	139.6
	Apr	196.7	260.6	171.1	168.3	185.1	167.9	164.3	92.1	150.9	169.5	237.1	148.0
	May	196.8	261.3	172.1	168.1	185.6	171.9	164.3	92.6	151.3	169.5	237.7	148.0
	Jun	196.6	261.7	173.3	171.0	186.9	172.2	164.4	92.5	151.3	169.5	239.2	148.7
	Jul	196.8	262.1	174.0	171.1	187.1	172.6	164.6	92.5	151.5	169.5	239.6	148.7
	Aug	197.1	262.6	175.4	171.2	187.6	172.7	164.6	92.5	151.5	169.8	240.4	148.9
	Sept	197.4	260.8	176.5	175.3	188.9	173.0	162.8	92.5	151.7	169.8	241.2	149.0
	Oct	197.8	263.2	177.5	175.3	189.3	173.1	163.0	92.5	152.0	169.8	243.4	149.1
	Nov	197.7	263.7	178.2	175.1	189.2	173.2	162.9	92.5	152.1	169.8	244.0	149.1
	Dec	197.7	264.0	179.0	177.1	189.8	173.2	160.8	92.5	152.3	169.8	244.6	149.0
<b>2016</b>	Jan	198.6	264.1	180.4	177.2	190.0	173.3	160.9	92.5	152.8	175.7	245.3	149.7
	Feb	199.8	264.5	181.6	177.0	190.2	173.4	158.6	92.5	153.6	175.7	246.0	149.3
	Mar	200.4	264.6	182.7	179.3	190.6	173.5	158.8	92.5	153.8	175.7	246.6	149.6
	Apr	202.0	266.1	183.6	179.3	190.9	174.0	159.1	92.5	153.9	175.9	247.3	159.3
	May	202.2	266.5	184.3	179.3	191.1	177.4	159.2	92.5	153.9	175.9	247.8	159.3
	Jun	201.6	266.8	185.3	180.8	192.1	177.4	159.7	92.5	153.9	175.9	248.7	159.8
	Jul	202.1	267.7	185.7	180.7	192.2	177.4	159.9	92.5	154.0	175.9	248.9	160.0
	Aug	202.8	267.9	186.2	180.7	192.6	177.5	160.0	92.5	154.2	175.9	249.6	160.0
<b>% Change on last month</b>		<b>0.3</b>	<b>0.1</b>	<b>0.3</b>	<b>0.0</b>	<b>0.2</b>	<b>0.0</b>	<b>0.1</b>	<b>0.0</b>	<b>0.1</b>	<b>0.0</b>	<b>0.3</b>	<b>0.0</b>

**TABLE 1: COST OF LIVING INDEX(Cont.)**

	All Items Index	National Inflation Rate	Monthly Change	Towns & Cities Index	Urban Villages Index	Rural Villages Index	Annual Inflation		
							Towns & Cities	Urban Villages	Rural Villages
	100.0	%	%	47.3	33.8	18.9	%	%	%
<b>2014</b>									
Jan	173.1	4.4	0.9	171.7	172.2	178.6	4.0	4.5	5.0
Feb	173.9	4.6	0.4	172.6	172.7	179.4	4.5	4.7	5.1
Mar	174.5	4.4	0.3	173.2	173.4	179.6	4.4	4.3	4.6
Apr	175.9	4.5	0.8	174.7	174.5	181.2	4.4	4.3	5.3
May	176.3	4.5	0.2	174.9	175.2	181.5	4.2	4.6	5.2
Jun	176.8	4.6	0.3	175.5	175.6	182.1	4.4	4.5	5.1
Jul	177.0	4.5	0.1	175.8	175.9	182.1	4.3	4.5	5.0
Aug	177.5	4.6	0.3	176.3	176.3	182.7	4.5	4.5	5.0
Sept	177.8	4.5	0.2	176.4	176.6	183.5	4.3	4.4	5.0
Oct	178.0	4.3	0.1	176.6	176.7	183.8	4.2	4.2	4.8
Nov	178.5	4.3	0.3	177.2	177.2	184.3	4.3	4.3	4.5
Dec	178.1	3.8	(0.3)	176.7	177.0	183.7	3.8	3.8	3.6
<b>2015</b>									
Jan	179.5	3.6	0.8	177.9	178.5	185.3	3.6	3.7	3.7
Feb	178.8	2.8	(0.4)	177.1	177.7	185.1	2.6	2.9	3.2
Mar	179.4	2.8	0.4	177.5	178.3	186.0	2.5	2.8	3.6
Apr	181.3	3.1	1.1	180.0	179.7	187.4	3.1	3.0	3.4
May	181.6	3.0	0.2	180.2	180.1	188.1	3.0	2.8	3.6
Jun	182.3	3.1	0.4	180.9	180.8	188.2	3.1	3.0	3.4
Jul	182.5	3.1	0.1	181.1	181.1	188.5	3.1	3.0	3.5
Aug	182.8	3.0	0.2	181.3	181.6	188.9	2.8	3.0	3.4
Sept	183.1	2.9	0.1	181.5	181.6	189.5	2.9	2.8	3.3
Oct	183.6	3.1	0.3	182.3	182.1	189.5	3.2	3.0	3.1
Nov	183.7	2.9	0.0	182.4	182.0	189.8	2.9	2.7	3.0
Dec	183.6	3.1	(0.0)	182.3	182.0	189.9	3.2	2.8	3.4
<b>2016</b>									
Jan	184.3	2.7	0.4	182.7	183.1	190.5	2.7	2.6	2.8
Feb	184.2	3.0	(0.0)	182.3	183.3	190.9	2.9	3.2	3.1
Mar	184.9	3.0	0.3	183.0	184.0	191.0	3.1	3.2	2.7
Apr	186.5	2.8	0.9	184.8	185.5	192.3	2.6	3.2	2.7
May	186.7	2.8	0.1	185.0	185.7	192.8	2.7	3.1	2.5
Jun	187.1	2.7	0.2	185.5	185.9	193.2	2.5	2.8	2.6
Jul	187.4	2.7	0.1	185.6	186.0	194.2	2.5	2.7	3.0
Aug	187.7	2.6	0.2	185.9	186.3	194.5	2.6	2.6	2.9
<b>% Change on last month</b>	<b>0.2</b>			<b>0.2</b>	<b>0.1</b>	<b>0.2</b>			

**TABLE 2 :National Cost-of-Living Group and Section Indices**

(September 2006=100.0)

Group Section	Weights	This month Aug 2016	Last month Jul 2016	3 months ago May 2016	6 months ago Feb 2016	12 months ago Aug 2015	Percentage Change on			
							Last month	3 months ago	6 months ago	12 months ago
<b>1 Food &amp; Non-Alcoholic Beverages</b>	<b>21.84</b>	<b>202.8</b>	<b>202.1</b>	<b>202.2</b>	<b>199.8</b>	<b>197.1</b>	<b>0.3</b>	<b>0.3</b>	<b>1.5</b>	<b>2.9</b>
1.1 Bread & Cereals	6.51	196.4	194.8	190.5	187.4	187.3	0.8	3.1	4.8	4.9
1.2 Meat (Fresh, Chilled & Frozen)	3.15	207.8	207.6	208.4	206.6	206.0	0.1	(0.3)	0.6	0.9
1.3 Fish (Fresh, Chilled & Frozen)	0.20	219.5	218.9	217.0	214.5	213.0	0.3	1.2	2.4	3.1
1.4 Milk, Cheese & Milk Products	2.19	205.1	205.1	204.6	204.2	203.0	0.0	0.2	0.5	1.0
1.5 Oils & Fats	0.90	229.7	229.6	229.2	228.5	228.9	0.0	0.2	0.5	0.3
1.6 Fruit	0.67	159.0	154.2	156.2	150.3	144.4	3.1	1.8	5.8	10.2
1.7 Vegetables	1.94	211.0	213.1	226.7	217.4	199.1	(1.0)	(6.9)	(2.9)	6.0
1.8 Sugar, Jam, Honey, Chocolate & Confectionery	1.36	215.3	211.8	212.0	209.9	207.3	1.7	1.6	2.6	3.9
1.9 Food not else where Classified	2.36	201.5	201.5	202.1	201.7	200.7	0.0	(0.3)	(0.1)	0.4
1.10 Coffee, Tea & Cocoa	0.63	230.9	229.7	227.8	228.6	222.2	0.5	1.3	1.0	3.9
1.11 Mineral Waters, Soft Drinks, Fruits & Veg. Juices	1.94	189.9	190.4	190.5	191.0	189.7	(0.2)	(0.3)	(0.5)	0.1
<b>2 Alcoholic Beverages, Tobacco &amp; Narcotics</b>	<b>9.29</b>	<b>267.9</b>	<b>267.7</b>	<b>266.5</b>	<b>264.5</b>	<b>262.6</b>	<b>0.1</b>	<b>0.5</b>	<b>1.3</b>	<b>2.0</b>
2.1 Alcoholic Beverages	8.09	262.8	262.6	261.6	260.4	258.5	0.1	0.5	0.9	1.7
2.2 Tobacco	1.20	302.2	301.7	299.2	292.6	290.3	0.2	1.0	3.3	4.1
<b>3 Clothing and Footwear</b>	<b>7.52</b>	<b>186.2</b>	<b>185.7</b>	<b>184.3</b>	<b>181.6</b>	<b>175.4</b>	<b>0.3</b>	<b>1.0</b>	<b>2.5</b>	<b>6.2</b>
3.1 Clothing	3.33	219.9	218.9	217.0	212.9	204.6	0.4	1.3	3.3	7.5
3.2 Other articles of Clothing	1.82	158.5	158.2	157.8	156.8	154.4	0.2	0.4	1.1	2.7
3.3 Cleaning, Repair & Hire	0.03	227.7	227.5	227.4	220.5	211.1	0.1	0.1	3.3	7.8
3.4 Footwear	2.34	159.4	159.1	157.8	155.9	149.7	0.1	1.0	2.2	6.5
<b>4 Housing, Water, Electr. Gas &amp; Other Fuels</b>	<b>11.46</b>	<b>180.7</b>	<b>180.7</b>	<b>179.3</b>	<b>177.0</b>	<b>171.2</b>	<b>0.0</b>	<b>0.8</b>	<b>2.1</b>	<b>5.6</b>
4.1 Rent paid by Tenants	5.68	169.9	169.9	166.8	162.2	150.0	0.0	1.8	4.8	13.3
4.2 Materials for Maintenance & Repair of dwellings	2.57	153.4	153.1	153.7	153.4	153.5	0.2	(0.2)	0.0	(0.0)
4.3 Water Supply & Misc. Services	1.14	203.1	203.1	203.1	203.1	202.8	0.0	0.0	0.0	0.2
4.4 Electricity Gas and other Fuels	2.06	232.3	232.3	232.2	232.6	234.4	0.0	0.1	(0.1)	(0.9)
<b>5 Furnishing, H/H Equipment &amp; Routine Maintenance</b>	<b>6.76</b>	<b>192.6</b>	<b>192.2</b>	<b>191.1</b>	<b>190.2</b>	<b>187.6</b>	<b>0.2</b>	<b>0.8</b>	<b>1.3</b>	<b>2.6</b>
5.1 Furniture & Furnishing	2.31	172.5	171.8	171.5	170.4	166.8	0.4	0.6	1.2	3.4
5.2 Carpets & Other Floor Coverings	0.04	185.6	185.3	184.8	183.5	173.0	0.2	0.5	1.1	7.3
5.3 Household Textiles	0.44	178.3	177.6	176.4	174.8	172.5	0.4	1.1	2.0	3.4
5.4 Household Appliances	0.69	165.0	164.9	164.4	163.7	159.7	0.1	0.4	0.8	3.3
5.5 Glassware, Tableware & Household Utensils	0.44	198.6	198.0	198.9	198.5	192.6	0.3	(0.1)	0.1	3.2
5.6 Small Tools, Miscellaneous Accessories	0.06	191.6	191.0	190.9	187.3	184.4	0.3	0.4	2.3	3.9
5.7 Goods & Services for H/hold Maintenance	2.79	217.4	217.4	215.1	214.3	213.6	0.0	1.1	1.4	1.8

**TABLE 2 :National Cost-of-Living Group and Section Indices** (September 2006=100.0) cont...

Group Section	Weights	This month Aug 2016	Last month Jul 2016	3 months ago May 2016	6 months ago Feb 2016	12 months ago Aug 2015	Percentage Change on			
							Last month	3 months ago	6 months ago	12 months ago
<b>6 Health</b>	<b>2.71</b>	<b>177.5</b>	<b>177.4</b>	<b>177.4</b>	<b>173.4</b>	<b>172.7</b>	<b>0.0</b>	<b>0.0</b>	<b>2.3</b>	<b>2.7</b>
6.1 Medical Products, App. & Equip.	0.35	223.5	223.4	223.1	222.6	217.0	0.0	0.2	0.4	3.0
6.2 Out-patient Services	0.66	188.0	187.9	187.9	185.9	186.1	0.0	0.0	1.1	1.0
6.3 Hospital Services	1.71	164.0	164.0	164.0	158.5	158.5	0.0	0.0	3.4	3.4
<b>7 Transport</b>	<b>18.98</b>	<b>160.0</b>	<b>159.9</b>	<b>159.2</b>	<b>158.6</b>	<b>164.6</b>	<b>0.1</b>	<b>0.5</b>	<b>0.9</b>	<b>(2.8)</b>
7.1 Purchase of Vehicles	5.89	155.5	155.2	153.3	152.2	159.3	0.2	1.5	2.2	(2.4)
7.2 Operation of Personal Transport	10.92	158.8	158.8	158.6	158.2	164.9	0.0	0.1	0.4	(3.7)
7.3 Transport Services	2.17	178.2	178.2	178.2	178.2	177.8	0.0	0.0	0.0	0.2
<b>8 Communication</b>	<b>3.01</b>	<b>92.5</b>	<b>92.5</b>	<b>92.5</b>	<b>92.5</b>	<b>92.5</b>	<b>0.0</b>	<b>0.0</b>	<b>0.0</b>	<b>0.0</b>
8.1 Postal Services	0.04	261.2	261.2	261.2	261.2	261.2	0.0	0.0	0.0	0.0
8.2 Telephone & Telefax Equipment	0.74	66.6	66.6	66.6	66.6	66.6	0.0	0.0	0.0	0.0
8.3 Telephone & Telefax Services	2.23	98.1	98.1	98.1	98.1	98.1	0.0	0.0	0.0	0.0
<b>9 Recreation &amp; Culture</b>	<b>2.22</b>	<b>154.2</b>	<b>154.0</b>	<b>153.9</b>	<b>153.6</b>	<b>151.5</b>	<b>0.1</b>	<b>0.1</b>	<b>0.3</b>	<b>1.8</b>
9.1 Audio Visual, Photographic & Info. Proce. Equip.	1.09	116.5	116.3	116.3	116.1	114.6	0.2	0.2	0.4	1.7
9.2 Other Recreational Items & Equip.	0.18	189.4	189.2	189.0	189.1	176.4	0.1	0.2	0.2	7.4
9.3 Recreational & Cultural Services	0.76	178.4	178.4	178.4	178.4	178.1	0.0	0.0	0.0	0.2
9.4 Newspapers, Books & Stationary	0.19	236.5	236.0	235.5	233.5	230.5	0.2	0.4	1.3	2.6
<b>10 Education</b>	<b>3.37</b>	<b>175.9</b>	<b>175.9</b>	<b>175.9</b>	<b>175.7</b>	<b>169.8</b>	<b>0.0</b>	<b>0.0</b>	<b>0.1</b>	<b>3.6</b>
10.1 Pre-Primary & Primary Education	1.10	234.1	234.1	234.1	233.6	226.7	0.0	0.0	0.2	3.2
10.2 Secondary & Tertiary Education	2.26	147.5	147.5	147.5	147.5	142.1	0.0	0.0	0.0	3.8
<b>11 Restaurants &amp; Hotels</b>	<b>3.27</b>	<b>249.6</b>	<b>248.9</b>	<b>247.8</b>	<b>246.0</b>	<b>240.4</b>	<b>0.3</b>	<b>0.7</b>	<b>1.5</b>	<b>3.8</b>
11.1 Restaurants, Cafes and the Like	3.08	253.8	253.0	251.9	250.1	244.4	0.3	0.8	1.5	3.8
11.2 Accommodation Services	0.19	181.9	181.5	180.8	179.1	174.8	0.2	0.6	1.5	4.0
<b>12 Miscellaneous Goods &amp; Services</b>	<b>9.57</b>	<b>160.0</b>	<b>160.0</b>	<b>159.3</b>	<b>149.3</b>	<b>148.9</b>	<b>0.0</b>	<b>0.4</b>	<b>7.2</b>	<b>7.4</b>
12.1 Personal Care	0.66	167.9	167.8	167.2	166.7	165.8	0.1	0.4	0.7	1.3
12.2 Personal Effects N.E.C.	0.04	159.4	159.0	157.8	157.5	151.1	0.2	1.0	1.2	5.5
12.3 Social Protection	0.14	258.4	258.4	258.4	258.3	214.9	0.0	0.0	0.0	20.2
12.4 Insurance	6.32	164.8	164.8	164.2	149.9	151.0	0.0	0.4	10.0	9.2
12.5 Financial Services	0.18	163.5	163.3	162.8	161.2	157.3	0.1	0.4	1.4	4.0
12.6 Taxes Licences, Fees	2.24	137.5	137.5	136.9	134.5	133.3	0.0	0.5	2.2	3.2
<b>All-Items Index</b>	<b>100.0</b>	<b>187.7</b>	<b>187.4</b>	<b>186.7</b>	<b>184.2</b>	<b>182.8</b>	<b>0.2</b>	<b>0.5</b>	<b>1.9</b>	<b>2.6</b>



**TABLE 3: COST-OF-LIVING INDEX BY TRADABILITY** (September 2006 = 100.0)

		All Items		Non-Tradable		Domestic Tradable		Imported Tradable		All Tradable	
		Index	Inflation	Index	Inflation	Index	Inflation	Index	Inflation	Index	Inflation
<b>Weights</b>		<b>100.00</b>		<b>30.92</b>		<b>23.91</b>		<b>45.17</b>		<b>69.08</b>	
<b>2014</b>	Jan	173.1	<b>4.4</b>	154.9	<b>4.4</b>	196.4	<b>5.8</b>	173.1	<b>3.6</b>	181.0	<b>4.4</b>
	Feb	173.9	<b>4.6</b>	155.1	<b>4.5</b>	198.9	<b>6.9</b>	173.4	<b>3.5</b>	182.1	<b>4.8</b>
	Mar	174.5	<b>4.4</b>	155.9	<b>4.7</b>	199.7	<b>6.0</b>	173.7	<b>3.3</b>	182.5	<b>4.3</b>
	Apr	175.9	<b>4.5</b>	158.7	<b>5.7</b>	200.6	<b>5.1</b>	174.2	<b>3.4</b>	183.2	<b>4.1</b>
	May	176.3	<b>4.5</b>	158.9	<b>5.6</b>	201.2	<b>5.1</b>	174.8	<b>3.5</b>	183.8	<b>4.1</b>
	Jun	176.8	<b>4.6</b>	159.8	<b>5.8</b>	201.5	<b>5.4</b>	175.2	<b>3.4</b>	184.1	<b>4.1</b>
	Jul	177.0	<b>4.5</b>	159.8	<b>5.7</b>	201.7	<b>5.5</b>	175.5	<b>3.2</b>	184.4	<b>4.1</b>
	Aug	177.5	<b>4.6</b>	160.1	<b>5.8</b>	201.8	<b>5.4</b>	176.3	<b>3.4</b>	185.0	<b>4.1</b>
	Sept	177.8	<b>4.5</b>	160.6	<b>5.8</b>	201.6	<b>5.1</b>	176.7	<b>3.3</b>	185.3	<b>4.0</b>
	Oct	178.0	<b>4.3</b>	160.6	<b>5.5</b>	201.7	<b>5.0</b>	177.0	<b>3.3</b>	185.5	<b>3.9</b>
	Nov	178.5	<b>4.3</b>	160.9	<b>5.3</b>	201.7	<b>4.6</b>	178.0	<b>3.5</b>	186.2	<b>4.0</b>
	Dec	178.1	<b>3.8</b>	161.6	<b>5.4</b>	201.7	<b>4.3</b>	176.6	<b>2.4</b>	185.2	<b>3.1</b>
<b>2015</b>	Jan	179.5	<b>3.6</b>	162.5	<b>4.9</b>	204.7	<b>4.2</b>	177.4	<b>2.5</b>	186.7	<b>3.1</b>
	Feb	178.8	<b>2.8</b>	163.0	<b>5.1</b>	205.6	<b>3.4</b>	175.0	<b>0.9</b>	185.4	<b>1.9</b>
	Mar	179.4	<b>2.8</b>	163.6	<b>4.9</b>	206.9	<b>3.6</b>	175.3	<b>1.0</b>	186.1	<b>1.9</b>
	Apr	181.3	<b>3.1</b>	168.4	<b>6.1</b>	207.6	<b>3.5</b>	175.9	<b>0.9</b>	186.7	<b>1.9</b>
	May	181.6	<b>3.0</b>	168.9	<b>6.3</b>	207.7	<b>3.2</b>	176.1	<b>0.8</b>	186.9	<b>1.7</b>
	Jun	182.3	<b>3.1</b>	170.7	<b>6.9</b>	207.6	<b>3.0</b>	176.3	<b>0.6</b>	187.0	<b>1.5</b>
	Jul	182.5	<b>3.1</b>	170.9	<b>6.9</b>	207.5	<b>2.9</b>	176.8	<b>0.7</b>	187.3	<b>1.5</b>
	Aug	182.8	<b>3.0</b>	171.0	<b>6.8</b>	207.7	<b>2.9</b>	177.3	<b>0.6</b>	187.7	<b>1.4</b>
	Sept	183.1	<b>2.9</b>	172.5	<b>7.4</b>	207.0	<b>2.7</b>	177.0	<b>0.2</b>	187.2	<b>1.1</b>
	Oct	183.6	<b>3.1</b>	172.7	<b>7.5</b>	208.3	<b>3.3</b>	177.4	<b>0.2</b>	187.6	<b>1.1</b>
	Nov	183.7	<b>2.9</b>	172.8	<b>7.4</b>	208.6	<b>3.4</b>	177.3	<b>-0.4</b>	188.0	<b>1.0</b>
	Dec	183.6	<b>3.1</b>	173.8	<b>7.6</b>	208.7	<b>3.5</b>	176.5	<b>0.0</b>	187.5	<b>1.2</b>
<b>2016</b>	Jan	184.3	<b>2.7</b>	174.4	<b>7.3</b>	209.9	<b>2.6</b>	176.9	<b>-0.3</b>	188.1	<b>0.8</b>
	Feb	184.2	<b>3.0</b>	174.5	<b>7.0</b>	210.8	<b>2.5</b>	176.3	<b>0.7</b>	188.0	<b>1.4</b>
	Mar	184.9	<b>3.0</b>	175.5	<b>7.3</b>	211.1	<b>2.1</b>	176.7	<b>0.8</b>	188.4	<b>1.3</b>
	Apr	186.5	<b>2.8</b>	178.7	<b>6.1</b>	212.4	<b>2.3</b>	177.4	<b>0.9</b>	189.3	<b>1.4</b>
	May	186.7	<b>2.8</b>	179.1	<b>6.0</b>	212.9	<b>2.5</b>	177.5	<b>0.8</b>	189.6	<b>1.4</b>
	Jun	187.1	<b>2.7</b>	180.0	<b>5.4</b>	212.7	<b>2.5</b>	177.8	<b>0.9</b>	189.7	<b>1.5</b>
	Jul	187.4	<b>2.7</b>	180.1	<b>5.4</b>	213.2	<b>2.8</b>	178.0	<b>0.7</b>	190.1	<b>1.5</b>
	Aug	187.7	<b>2.6</b>	180.2	<b>5.3</b>	213.9	<b>3.0</b>	178.3	<b>0.6</b>	190.5	<b>1.5</b>
<b>% Change on last month</b>		<b>0.2</b>		<b>0.1</b>		<b>0.3</b>		<b>0.1</b>		<b>0.2</b>	

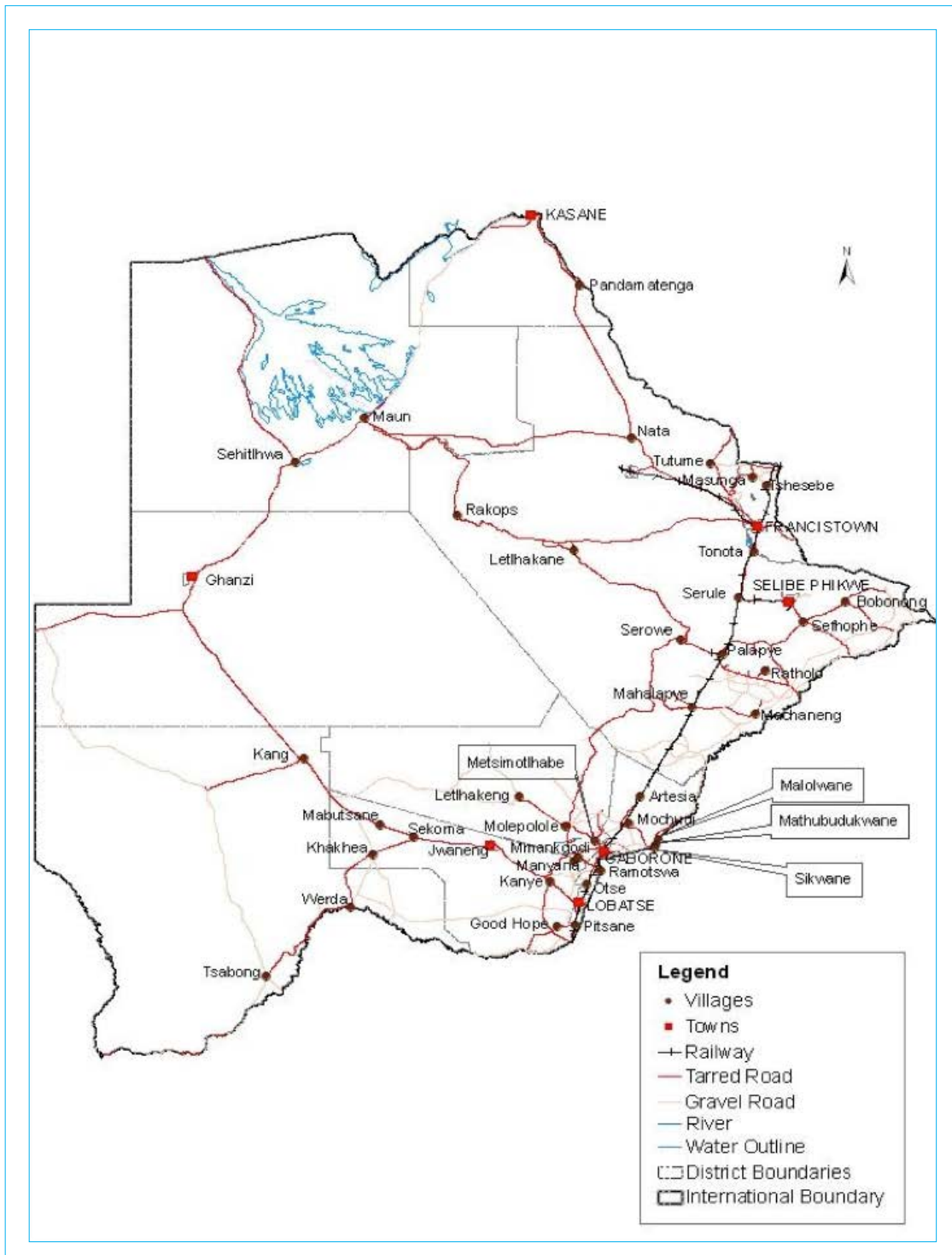
**TABLE 4: Core Inflation Rates by Exclusion and Trimmed Mean**

Year	Month	Consumer Price Index (Trimmed Mean) (September 2006 = 100)	Core Monthly Inflation Rate (Trimmed Mean) (percentage)	Consumer Price Index (Excluding Administered Prices) (September 2006 = 100)	Core Monthly Inflation (Excluding Administered Prices) (percentage)
<b>2014</b>					
	Jan	173.9	4.1	175.4	5.2
	Feb	173.4	4.1	176.3	5.5
	Mar	175.1	4.0	177.1	5.2
	Apr	175.0	4.1	178.2	5.2
	May	175.4	4.1	178.8	5.2
	Jun	177.8	4.2	179.4	5.3
	Jul	178.0	4.2	179.7	5.3
	Aug	177.6	4.2	180.3	5.3
	Sept	177.8	4.1	180.7	5.2
	Oct	179.0	4.0	180.9	5.1
	Nov	179.6	3.9	181.5	5.0
	Dec	176.6	3.7	182.0	4.9
<b>2015</b>					
	Jan	178.5	3.6	183.7	4.8
	Feb	178.6	3.2	184.8	4.8
	Mar	179.2	3.3	185.6	4.8
	Apr	184.1	3.6	186.7	4.8
	May	184.4	3.5	187.1	4.7
	Jun	185.1	3.6	187.9	4.7
	Jul	185.4	3.6	188.2	4.7
	Aug	185.8	3.5	188.6	4.6
	Sept	186.5	3.4	189.3	4.8
	Oct	187.1	3.6	189.9	5.0
	Nov	187.1	3.3	190.0	4.7
	Dec	187.0	3.2	190.3	4.5
<b>2016</b>					
	Jan	187.8	2.8	191.1	4.0
	Feb	188.2	2.6	191.6	3.7
	Mar	188.7	2.5	192.4	3.7
	Apr	189.7	2.4	193.9	3.9
	May	190.1	2.3	194.2	3.8
	Jun	190.2	2.4	194.7	3.6
	Jul	191.7	2.5	195.0	3.6
	Aug	192.2	2.4	195.4	3.6

**Table 5: Average Annual Inflation** ( September 2006=100)

	Group	Weights	YEAR							
			2008	2009	2010	2011	2012	2013	2014	2015
1	Food & Non-Alcoholic Beverages	21.84	20.2	14.7	3.6	6.9	8.0	5.4	3.0	1.3
2	Alcoholic Beverages,Tobacco & Narcotics	9.29	13.2	35.2	7.1	8.4	7.6	10.3	9.0	6.1
3	Clothing and Footwear	7.52	2.0	8.4	8.0	8.9	7.5	6.3	6.0	7.6
4	Housing, Water, Electr. Gas & Other Fuels	11.46	8.1	4.8	6.4	8.4	7.7	4.3	3.9	7.1
5	Furnishing, H/H Equipment& Routine Maintenance	6.76	6.0	11.9	9.4	9.0	7.3	4.9	5.0	6.1
6	Health	2.71	11.3	5.5	2.7	4.5	5.9	5.5	8.3	6.3
7	Transport	18.98	21.2	(8.4)	12.1	13.2	10.8	7.3	1.2	(5.1)
8	Communication	3.01	(0.3)	(0.3)	1.2	(3.0)	(1.4)	0.3	0.3	0.3
9	Recreation & Culture	2.22	2.3	5.0	6.0	8.3	5.8	4.5	4.2	5.7
10	Education	3.37	3.9	3.9	5.8	10.6	6.4	4.7	7.4	6.4
11	Restaurants & Hotels	3.27	12.7	18.8	9.0	9.3	8.4	7.9	7.6	5.5
12	Miscellaneous Goods & Services	9.57	4.9	3.8	7.0	5.3	2.0	1.2	5.2	7.2
	All-Items Index	<b>100.0</b>	<b>12.6</b>	<b>8.2</b>	<b>6.9</b>	<b>8.5</b>	<b>7.5</b>	<b>5.9</b>	<b>4.4</b>	<b>3.1</b>

PRICES COLLECTION COVERAGE FOR BOTSWANA CONSUMER PRICE INDEX (CPI)- 2016



## Glossary

**Consumer Price Index (CPI)** is an index which measures price changes in goods and services with reference to a base period.

**Inflation** is a measurement of prices movement of goods and services in a particular country.

**Domestic Tradable** refers to the goods and services which a country (Botswana) can export to other countries.

**Imported Tradable** represents the goods and services which a country (Botswana) imports from other countries (trading partners).

**Non-Tradable** refers to the goods and services which a country cannot either export or import to other countries.

**All –Tradable** refers to the total of **Domestic** and **Imported tradable**.

**Trimmed Mean Core Inflation**- attempts to remove 8 percent (by weight) of the commodity sub-groups with the largest price changes at each of the ends of an ordered series of price changes in any given month.

**Core inflation by Exclusion** is a measure used to remove the volatility inherent in prices that are only adjusted periodically and not always in response to currently prevailing market forces.