

Consumer Price Index

July 2020

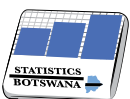


Private Bag 47
Maun
Tel: 371 5716
Fax: 686 4327

Private Bag 32
Ghanzi
Tel: 371 5723
Fax: 659 7506

Private Bag F193,
City of Francistown
Tel. 241 5848,
Fax. 241 7540

Private Bag 0024, Gaborone
Tel: 3671300
Fax: 3952201
Toll Free: 0800 600 200



STATISTICS BOTSWANA

E-mail: info@statsbots.org.bw
Website: <http://www.statsbots.org.bw>

Contact Statistician:
Phaladi Labobedi

CONTENTS

SECTION 1: CORONAVIRUS (COVID-19) PANDEMIC AND CPI COMPILATION	1
SECTION 2: HEADLINE INFLATION	1
SECTION 3: CORE INFLATION	1
GLOSSARY:	12

CHARTS

CHART 1: NATIONAL RATES OF INFLATION	2
CHART 2: MONTHLY CHANGES IN THE CONSUMER PRICE INDEX	2
CHART 3: NON-TRADEABLES INFLATION RATES	2
CHART 4: TRADEABLES INFLATION RATES	2
CHART 5: CONTRIBUTIONS OF GROUPS TO ANNUAL INFLATION RATE	3

TABLES

TABLE 1: CONSUMER PRICE INDEX (DECEMBER 2018 =100.0)	4
TABLE 2: NATIONAL CONSUMER PRICE GROUP & SECTION INDICES (DECEMBER 2018 = 100.0)	6
TABLE 3: CONSUMER PRICE INDEX BY TRADABILITY (DECEMBER 2018 = 100.0)	8
TABLE 4: CORE INFLATION RATES BY EXCLUSION AND TRIMMED MEAN	9
TABLE 5: CONTRIBUTIONS OF GROUPS TO ANNUAL INFLATION RATE	10
TABLE 6: AVERAGE ANNUAL INFLATION (DECEMBER 2018 = 100.0)	10

COMMENTARY

SECTION 1: CORONAVIRUS (COVID-19) PANDEMIC AND CPI COMPILATION

Data collection for July 2020 was conducted using physical visits. All outlets used to collect prices for the CPI Basket were fully operational during the month of July 2020. Nonetheless, the information on international airfares was still not available due to the COVID-19 restrictions. Thus the missing prices of international airfare were imputed using the geometric mean of price relatives (variation) of the observed prices of domestic airfares. This is in accordance with the international Consumer Price Index (CPI) methodological (imputation) techniques as stipulated by the International Monetary Fund (IMF).

SECTION 2: HEADLINE INFLATION

The annual inflation rate in July 2020 was 0.9 percent, the same rate as in June 2020. Contributing significantly to the July annual inflation rate were; Transport (-1.6 percentage points), Housing, Water, Electricity, Gas & Other Fuels (1.0 percentage point) and Food & Non-Alcoholic Beverages (0.5 of a percentage point). [Refer to Table 5](#)

The inflation rates for regions between June and July 2020 indicated that the Rural Villages' rate went up by 0.2 of a percentage point, moving from 0.4 percent in June to 0.6 percent in July. The Cities & Towns' rate moved from 1.0 percent in June to 0.9 percent in July 2020 registering a drop of 0.1 of a percentage point. The Urban Villages' inflation rate remained unchanged at 1.1 percent in July. [Refer to Table 1.](#)

The national Consumer Price Index was 102.6 in July 2020, recording an increase of 0.2 percent, from 102.4 recorded in June 2020. The Rural Villages Index rose by 0.3 percent moving from 101.5 in June to 101.8 in July. The Urban Villages' recorded an increase of 0.2 percent over the two months, moving from 102.7 in June to 102.9 in July. The Cities & Towns index moved from 102.6 in June to 102.7 in July registering an increase of 0.1 percent. [Refer to Table 1.](#)

Group indices were generally moving at a steady pace between June and July 2020, recording changes of less than 1.0 percent, except the Alcoholic Beverages & Tobacco, which recorded an increase of 1.4 percent. [Refer to Table 2.](#)

The Alcoholic Beverages & Tobacco group index rose by 1.4 percent, from 108.7 to 110.3 over the two months. This was attributed to the rise in the constituent section indices, Alcoholic Beverages (1.6 percent) and Tobacco (0.6 percent).

Food & Non-Alcoholic Beverages group index rose by 0.4 percent, from 105.7 to 106.1 over the two periods. This was owed to the increase in most constituent section indices, particularly; Vegetables (1.6 percent) and Bread & Cereals (1.1 percent).

The All-Tradeables index was 101.0 in July 2020, registering an increase of 0.3 percent from 100.8 recorded in June 2020. The Domestic Tradeables Index realized a rise of 0.4 percent, moving from 107.7 in June to 108.1 in July. The Imported Tradeables Index rose by 0.2 percent, from 98.3 in June to 98.5 in July 2020. The Non-Tradeables Index was 104.7 in July, the same rate as in June 2020. [Refer to Table 3.](#)

All-Tradeables inflation rate was -0.6 percent in July 2020, the same rate as in June 2020. The Non-Tradeables inflation recorded a drop of 0.1 of a percentage point, moving from 3.0 percent to 2.9 percent during the period under review. The Domestic Tradeables inflation was 5.2 percent in July, an increase of 0.1 of a percentage point from 5.1 percent recorded in June. The Imported Tradeables inflation rate remained constant at -2.7 percent in July.

SECTION 3: CORE INFLATION

The Trimmed Mean Core Inflation rate and the Core Inflation rate by exclusion remained at 1.0 percent and 2.8 percent respectively in July 2020 [Refer to Table 4.](#)

CHARTS

Chart 1: National Inflation Rate 2017-2020

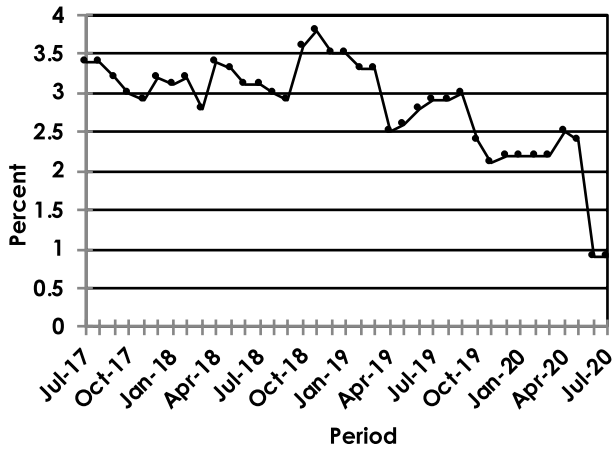


Chart 2: Monthly Changes in Consumer Price Index Index 2017 - 2020

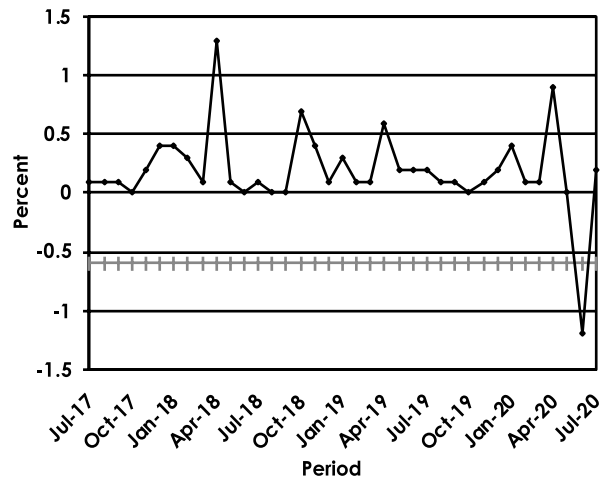


Chart 3: Non-Tradeables Inflation 2017 - 2020

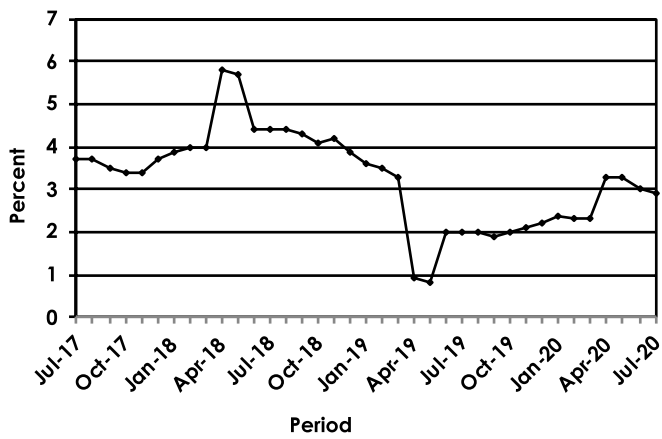
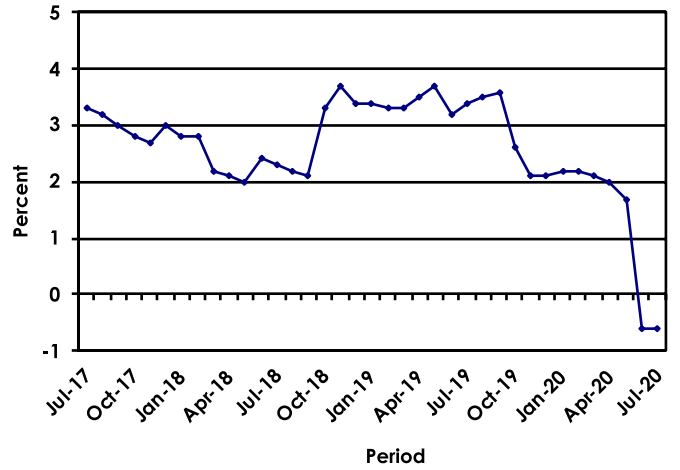
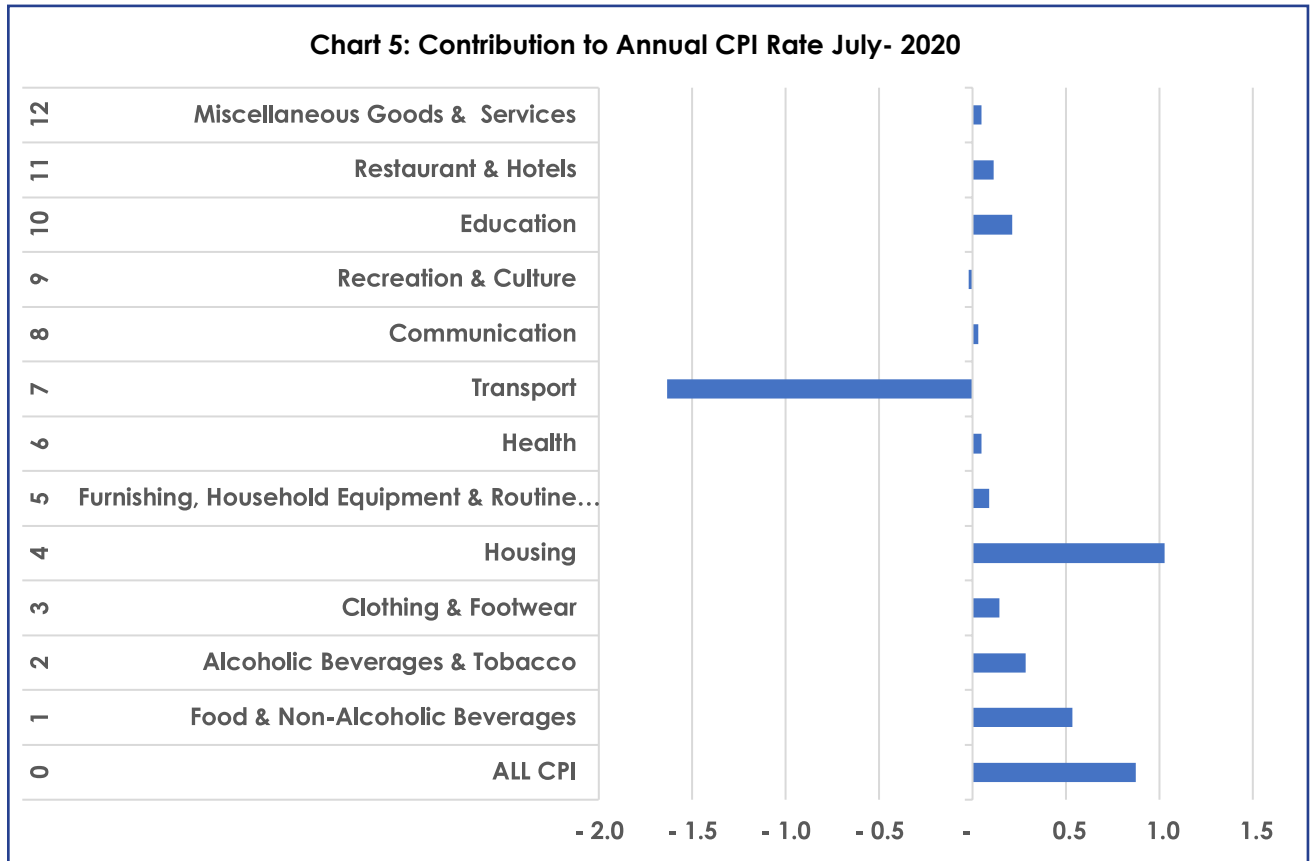


Chart 4: Tradeables Inflation 2017 - 2020





Dr. Burton S. Mguni
Statistician General
 14th August 2020

TABLES

TABLE 1 : CONSUMER PRICE INDEX (DECEMBER 2018 =100.0)

		Food	Alcohol and Tobacco	Clothing and Footwear	Housing	Furniture etc	Health	Transport	Communi-cation	Rec. & Culture	Education	Rest. & Hotels	Miscella-neous
Weights		13.55	4.34	5.95	17.45	4.85	3.38	23.43	6.94	2.82	4.60	3.66	9.01
2017	Jan	100.0	96.8	96.5	91.5	96.1	97.6	86.8	108.9	96.8	94.7	94.2	91.5
	Feb	100.4	97.4	96.8	91.6	96.5	97.7	87.0	108.9	97.2	94.7	94.4	91.7
	Mar	100.9	97.9	97.0	92.0	96.9	97.8	87.9	108.9	97.4	94.7	94.8	92.0
	Apr	101.1	98.5	97.2	95.5	97.0	97.9	88.0	108.9	98.1	94.7	95.0	92.2
	May	101.5	99.0	97.4	95.5	97.2	98.0	88.1	109.0	98.1	94.7	95.3	92.3
	Jun	101.4	99.0	97.5	95.7	97.4	98.6	88.3	109.2	98.2	94.8	95.5	93.2
	Jul	101.6	99.1	97.9	95.8	97.6	98.7	88.3	109.2	98.3	94.8	95.9	93.2
	Aug	101.5	99.2	98.1	95.8	97.7	98.8	88.5	109.2	98.4	94.8	96.2	93.2
	Sept	100.9	99.3	98.3	96.4	97.9	98.8	88.6	110.3	98.3	94.8	96.4	93.3
	Oct	100.8	99.1	98.4	96.3	98.0	98.8	88.6	110.3	98.4	94.9	96.6	93.4
	Nov	100.7	99.0	98.4	96.3	98.1	98.9	89.4	110.3	98.3	94.9	96.6	93.4
	Dec	100.2	99.1	98.5	96.7	97.9	98.9	90.9	110.1	98.5	94.9	97.1	93.9
2018	Jan	100.4	99.1	98.6	96.8	98.1	99.0	91.2	110.2	98.7	99.9	97.4	94.2
	Feb	100.8	99.2	98.7	96.9	98.4	99.1	91.5	110.2	99.0	99.9	97.8	94.7
	Mar	100.9	99.3	98.9	97.2	99.0	99.2	91.4	110.3	99.4	100.0	97.9	94.9
	Apr	101.0	99.2	99.3	98.6	99.1	99.2	93.5	110.3	100.0	100.0	98.4	100.0
	May	100.9	99.5	99.5	98.7	99.2	99.4	93.6	110.3	100.1	100.0	98.6	100.1
	Jun	100.7	99.7	99.6	99.2	99.5	99.4	95.0	100.2	100.1	100.0	99.0	100.2
	Jul	100.5	99.9	99.9	99.2	99.6	99.5	95.1	100.2	100.2	100.0	99.4	100.3
	Aug	100.2	100.1	99.8	99.3	99.6	99.5	95.2	100.2	100.2	100.0	99.5	100.3
	Sept	99.9	100.1	99.8	99.7	100.0	99.7	95.0	100.2	100.2	100.0	99.7	100.2
	Oct	99.8	100.2	99.7	99.7	100.0	99.8	98.4	100.2	99.8	100.0	99.7	99.8
	Nov	99.9	100.2	99.8	99.9	100.1	99.9	99.8	100.2	99.9	100.0	99.7	99.8
	Dec	100.0	100.0	100.0	100.0	100.0	100.0	100.0	100.0	100.0	100.0	100.0	100.0
2019	Jan	100.4	99.8	100.2	100.1	100.2	100.1	100.3	100.0	100.1	103.0	100.0	100.3
	Feb	100.6	99.6	100.2	100.1	100.4	100.2	100.6	100.0	100.1	103.1	100.1	100.6
	Mar	101.0	99.9	100.3	100.3	100.6	100.3	100.5	100.0	100.4	103.1	100.6	100.4
	Apr	101.4	101.2	100.4	100.3	100.7	100.3	100.7	100.0	100.2	103.1	100.8	104.9
	May	102.0	102.4	100.5	100.4	100.8	100.4	100.8	100.0	100.2	103.1	101.1	104.9
	Jun	102.0	103.2	100.7	100.9	101.6	100.5	100.6	100.1	100.2	103.1	101.3	105.0
	Jul	102.1	103.5	100.8	101.0	101.8	100.6	100.9	100.1	100.3	103.1	101.6	105.4
	Aug	102.1	103.6	101.0	101.1	101.8	100.7	101.0	100.2	100.3	103.1	101.8	105.3
	Sept	102.4	103.8	101.0	101.2	102.1	100.6	100.9	100.2	100.3	103.1	102.1	105.3
	Oct	102.3	104.1	101.1	101.3	102.2	100.7	101.0	100.3	100.0	103.1	102.3	105.2
	Nov	102.5	104.2	101.3	101.3	102.4	100.8	101.2	100.4	100.0	103.1	102.4	105.3
	Dec	103.0	104.4	101.3	101.5	102.7	100.8	101.3	100.4	99.8	103.1	102.9	105.3
2020	Jan	103.7	104.5	101.7	101.6	103.0	101.0	101.3	100.4	99.8	107.9	103.7	105.5
	Feb	104.2	104.6	101.8	101.7	103.3	101.0	101.4	100.3	100.0	108.0	103.9	105.6
	Mar	104.4	104.7	102.0	101.9	103.5	101.1	101.3	100.3	100.0	108.0	104.2	105.4
	Apr	104.6	104.8	102.1	106.5	103.7	101.5	101.3	100.3	99.7	108.0	104.4	106.1
	May	105.2	104.8	102.4	106.6	103.7	101.7	100.7	100.4	99.5	108.0	104.7	106.2
	Jun	105.7	108.7	102.9	106.7	103.9	102.0	93.9	100.5	99.5	108.0	104.8	106.2
	Jul	106.1	110.3	103.2	106.9	103.7	102.0	93.9	100.6	99.6	108.0	104.8	105.9
% Change on													
Last month		0.4	1.4	0.3	0.2	(0.2)	0.0	0.0	0.1	0.1	0.0	0.0	(0.3)

TABLE 1: CONSUMER PRICE INDEX (Cont.)

		All Items Index	National Inflation Rate	Monthly Change	Towns & Cities Index	Urban Village Index	Rural Villages Index	Annual Inflation		
								Towns & Cities	Urban Villages	Rural
		100.0	%	%	0.38	0.41	0.21	%	%	%
2017	Jan	94.0	3.1	0.4	93.1	94.3	95.1	3.1	2.8	3.6
	Feb	94.2	3.4	0.2	93.3	94.6	95.5	3.5	2.9	3.8
	Mar	94.7	3.5	0.5	93.8	95.0	95.9	3.6	3.0	4.2
	Apr	95.4	3.4	0.7	94.4	95.8	96.5	3.3	3.0	4.2
	May	95.6	3.5	0.2	94.6	96.0	96.8	3.4	3.1	4.1
	Jun	95.8	3.5	0.2	94.8	96.2	96.8	3.4	3.3	3.9
	Jul	95.9	3.4	0.1	95.0	96.3	97.0	3.5	3.2	3.7
	Aug	96.0	3.4	0.1	95.0	96.4	97.1	3.4	3.2	3.6
	Sept	96.1	3.2	0.1	95.2	96.3	97.2	3.2	3.0	3.4
	Oct	96.1	3.0	0.0	95.2	96.2	97.3	3.0	2.7	3.3
	Nov	96.2	2.9	0.2	95.5	96.4	97.4	3.1	2.6	3.0
	Dec	96.6	3.2	0.4	96.0	96.6	97.6	3.6	2.9	3.1
2018	Jan	97.0	3.1	0.4	96.4	97.0	97.8	3.6	2.9	2.8
	Feb	97.2	3.2	0.3	96.7	97.3	98.1	3.6	2.9	2.7
	Mar	97.4	2.8	0.1	96.8	97.5	98.1	3.3	2.6	2.3
	Apr	98.7	3.4	1.3	98.4	98.7	99.1	4.2	3.1	2.7
	May	98.7	3.3	0.1	98.5	98.8	99.1	4.1	3.0	2.5
	Jun	98.8	3.1	0.0	98.6	98.8	99.0	4.0	2.7	2.3
	Jul	98.8	3.1	0.1	98.7	98.9	99.1	3.9	2.7	2.1
	Aug	98.8	3.0	(0.0)	98.6	98.9	99.1	3.8	2.6	2.0
	Sept	98.9	2.9	0.0	98.7	98.9	99.1	3.6	2.7	2.0
	Oct	99.5	3.6	0.7	99.5	99.5	99.7	4.4	3.4	2.5
	Nov	99.9	3.8	0.4	99.9	99.8	100.0	4.7	3.6	2.6
	Dec	100.0	3.5	0.1	100.0	100.0	100.0	4.2	3.5	2.5
2019	Jan	100.3	3.5	0.3	100.4	100.3	100.2	4.1	3.4	2.4
	Feb	100.5	3.3	0.1	100.6	100.5	100.3	4.0	3.2	2.3
	Mar	100.6	3.3	0.1	100.6	100.6	100.3	3.9	3.2	2.2
	Apr	101.2	2.5	0.6	101.2	101.3	100.8	2.9	2.6	1.7
	May	101.3	2.6	0.2	101.4	101.5	100.9	2.9	2.7	1.8
	Jun	101.5	2.8	0.2	101.6	101.6	101.1	3.0	2.9	2.1
	Jul	101.7	2.9	0.2	101.8	101.8	101.2	3.1	3.0	2.1
	Aug	101.7	2.9	0.1	101.8	101.9	101.3	3.2	3.1	2.2
	Sept	101.8	3.0	0.1	101.9	102.0	101.4	3.2	3.1	2.3
	Oct	101.9	2.4	0.0	102.0	102.0	101.4	2.5	2.5	1.8
	Nov	102.0	2.1	0.1	102.1	102.1	101.5	2.2	2.3	1.5
	Dec	102.2	2.2	0.2	102.3	102.3	101.6	2.3	2.3	1.6
2020	Jan	102.6	2.2	0.4	102.8	102.6	102.0	2.4	2.3	1.8
	Feb	102.7	2.2	0.1	102.9	102.8	102.1	2.3	2.3	1.9
	Mar	102.8	2.2	0.1	102.9	102.9	102.3	2.3	2.3	2.0
	Apr	103.7	2.5	0.9	103.9	103.9	103.0	2.7	2.6	2.3
	May	103.7	2.4	0.0	103.9	103.8	103.1	2.5	2.3	2.2
	Jun	102.4	0.9	(1.2)	102.6	102.7	101.5	1.0	1.1	0.4
	Jul	102.6	0.9	0.2	102.7	102.9	101.8	0.9	1.1	0.6
% Change on last month		0.2			0.1	0.2	0.3			

TABLE 2: NATIONAL CONSUMER PRICE GROUP AND SECTION INDICES (DECEMBER 2018=100.0)

	Group Section	Weights	This month Jul 2020	Last month Jun 2020	3 months ago Apr 2020	6 months ago Jan 2020	12 months ago Jul 2019	Percentage Change on:			
								Last month	3 months ago	6 months ago	12 months ago
1	Food & Non-Alcoholic Beverages	13.55	106.1	105.7	104.6	103.7	102.1	0.4	1.5	2.4	3.9
1.1	Bread & Cereals	4.26	107.9	106.8	105.1	104.7	102.5	1.1	2.7	3.1	5.3
1.2	Meat (Fresh, Chilled & Frozen)	2.36	111.5	111.6	110.3	107.4	102.0	(0.1)	1.1	3.8	9.4
1.3	Fish (Fresh, Chilled & Frozen)	0.18	102.5	103.1	104.2	105.3	102.9	(0.5)	(1.6)	(2.6)	(0.4)
1.4	Milk, Cheese & Milk Products	0.98	103.8	103.6	103.5	101.7	101.8	0.2	0.3	2.0	2.0
1.5	Oils & Fats	0.92	100.4	99.9	98.9	100.8	100.4	0.4	1.5	(0.4)	(0.0)
1.6	Fruits	0.78	108.6	110.1	110.3	103.9	102.6	(1.4)	(1.6)	4.5	5.8
1.7	Vegetables	1.08	104.2	102.6	100.2	102.1	104.0	1.6	4.0	2.0	0.2
1.8	Sugar, Jam, Honey, Chocolate & Confectionery	1.11	99.4	99.4	98.8	98.6	99.4	0.0	0.6	0.8	(0.0)
1.9	Food Not Elsewhere Classified	0.54	104.5	105.1	104.8	103.3	103.5	(0.6)	(0.2)	1.2	1.0
1.10	Coffee, Tea & Cocoa	0.73	103.4	103.0	102.5	102.2	101.8	0.3	0.8	1.2	1.6
1.11	Mineral Waters, Soft Drinks, Fruits & Vegetables Juices	0.62	103.5	103.5	103.0	102.7	102.4	0.0	0.5	0.8	1.1
2	Alcoholic Beverages & Tobacco	4.34	110.3	108.7	104.8	104.5	103.5	1.4	5.2	5.5	6.6
2.1	Alcoholic Beverages	3.51	110.6	108.8	104.8	104.5	103.5	1.6	5.5	5.8	6.8
2.2	Tobacco	0.82	109.0	108.3	104.8	104.4	103.2	0.6	3.9	4.4	5.6
3	Clothing & Footwear	5.95	103.2	102.9	102.1	101.7	100.8	0.3	1.1	1.5	2.4
3.1	Clothing	2.60	103.6	103.4	102.6	102.2	101.0	0.2	1.0	1.4	2.5
3.2	Other Articles of Clothing	0.72	102.8	102.4	101.8	101.3	100.4	0.4	0.9	1.5	2.3
3.3	Cleaning, Repair & Hire	0.61	104.9	104.9	103.0	102.9	101.0	0.0	1.8	1.9	3.9
3.4	Footwear	2.03	102.4	101.9	101.3	100.8	100.5	0.5	1.1	1.6	1.9
4	Housing, Water, Electricity, Gas & Other Fuels	17.45	106.9	106.7	106.5	101.6	101.0	0.2	0.4	5.2	5.9
4.1	Rent Paid by Tenants	7.78	103.0	103.0	103.0	102.5	101.5	0.0	0.0	0.5	1.5
4.2	Materials for Maintenance & Repair of Dwellings	3.83	104.9	103.9	102.9	102.1	101.3	1.0	1.9	2.8	3.6
4.3	Water Supply & Miscellaneous Services	1.96	100.0	100.0	100.0	100.0	100.0	0.0	0.0	0.0	0.0
4.4	Electricity, Gas & Other Fuels	3.89	120.1	120.0	120.2	100.1	100.0	0.1	(0.1)	20.0	20.0
5	Furnishing, H/H Equipment & Routine Maintenance	4.85	103.7	103.9	103.7	103.0	101.8	(0.2)	0.0	0.7	1.9
5.1	Furniture & Furnishing	1.35	103.9	103.9	103.2	102.2	101.2	0.0	0.7	1.7	2.7
5.2	Carpets & Other Floor Coverings	0.27	103.6	103.3	102.9	101.8	100.8	0.3	0.7	1.8	2.8
5.3	Household Textiles	0.29	104.1	103.7	102.7	102.5	100.8	0.4	1.4	1.6	3.2
5.4	Household Appliances	0.72	102.2	101.7	100.8	100.3	100.1	0.4	1.4	1.9	2.1
5.5	Glassware, Tableware & Household Utensils	0.23	103.7	103.8	103.5	103.1	101.5	(0.1)	0.2	0.6	2.1
5.6	Small Tools, Miscellaneous Accessories	0.04	104.4	103.6	103.2	102.9	101.9	0.7	1.2	1.5	2.5
5.7	Goods & Services for Household Maintenance	1.95	104.1	104.8	105.4	104.7	103.2	(0.7)	(1.3)	(0.6)	0.8
6	Health	3.38	102.0	102.0	101.5	101.0	100.6	0.0	0.5	1.0	1.4
6.1	Medical Products, Applications & Equipments	0.98	103.5	103.4	102.7	102.4	101.7	0.1	0.8	1.1	1.7
6.2	Out-Patient Services	0.93	102.2	102.2	101.4	101.0	100.4	0.0	0.8	1.3	1.8
6.3	Hospital Services	1.47	100.9	100.9	100.8	100.0	100.0	0.0	0.2	0.9	0.9

TABLE 2: NATIONAL CONSUMER PRICE GROUP AND SECTION INDICES (DECEMBER 2018=100.0) (Cont.)

	Group Section	Weights	This month Jul 2020	Last month Jun 2020	3 months ago Apr 2020	6 months ago Jan 2020	12 months ago Jul 2019	Percentage Change on:			
								Last month	3 months ago	6 months ago	12 months ago
7	Transport	23.43	93.9	93.9	101.3	101.3	100.9	0.0	(7.3)	(7.3)	(6.9)
7.1	Purchase of Vehicles	5.74	103.6	103.7	104.2	104.2	102.7	(0.1)	(0.6)	(0.6)	0.8
7.2	Operation of Personal Transport	12.56	86.8	86.8	100.5	100.4	100.3	0.0	(13.6)	(13.5)	(13.4)
7.3	Transport Services	5.13	100.2	100.1	100.1	100.1	100.1	0.1	0.1	0.1	0.1
8	Communication	6.94	100.6	100.5	100.3	100.4	100.1	0.1	0.3	0.2	0.4
8.1	Postal Services	0.21	100.0	100.0	100.0	100.0	100.0	0.0	0.0	0.0	0.0
8.2	Telephone & Telefax Equipment *	1.13	103.6	103.3	101.7	102.2	100.9	0.3	1.9	1.4	2.7
8.3	Telephone & Telefax Services	5.60	100.0	100.0	100.0	100.0	100.0	0.0	0.0	0.0	0.0
9	Recreation & Culture	2.82	99.6	99.5	99.7	99.8	100.3	0.1	(0.1)	(0.2)	(0.7)
9.1	Audio Visual, Photographic & Information Processing Equipment	2.10	99.4	99.2	99.5	99.2	100.2	0.2	(0.2)	0.1	(0.9)
9.2	Other Recreational Items & Equipments	0.30	101.4	101.4	101.6	101.6	100.9	0.0	(0.1)	(0.2)	0.5
9.3	Recreational & Cultural Services	0.31	97.3	97.3	97.4	99.9	99.8	(0.0)	(0.1)	(2.6)	(2.5)
9.4	Newspapers, Books & Stationary	0.11	105.9	105.9	105.5	105.1	102.0	0.0	0.4	0.8	3.8
10	Education	4.60	108.0	108.0	108.0	107.9	103.1	0.0	0.0	0.0	4.7
10.1	Pre-Primary & Primary Education	1.89	108.3	108.3	108.3	108.3	103.4	0.0	0.0	0.0	4.8
10.2	Secondary & Tertiary Education	2.70	107.7	107.7	107.7	107.7	103.0	0.0	0.0	0.0	4.6
11	Restaurants & Hotels	3.66	104.8	104.8	104.4	103.7	101.6	0.0	0.4	1.1	3.1
11.1	Restaurants, Cafes & the Like	3.02	105.0	105.0	104.5	103.7	101.6	0.0	0.5	1.2	3.4
11.2	Accommodation Services	0.64	104.0	103.9	103.9	103.4	102.0	0.1	0.1	0.5	1.9
12	Miscellaneous Goods & Services	9.01	105.9	106.2	106.1	105.5	105.4	(0.3)	(0.2)	0.4	0.5
12.1	Personal Care	2.33	102.1	103.2	103.2	101.2	101.7	(1.1)	(1.1)	0.9	0.4
12.2	Personal Effects Not Elsewhere Classified	0.22	101.1	100.9	100.7	100.4	100.1	0.2	0.4	0.6	1.0
12.3	Social Protection	0.13	108.2	108.2	108.2	108.2	101.6	0.0	0.0	0.0	6.6
12.4	Insurance	3.62	111.0	110.8	110.8	111.5	111.9	0.1	0.2	(0.4)	(0.8)
12.5	Financial Services	1.09	101.4	102.0	101.5	101.2	100.8	(0.5)	(0.1)	0.3	0.6
12.6	Taxes, Licences & Fees	1.61	103.7	103.6	103.7	101.6	100.4	0.1	0.0	2.1	3.3
	All-Items Index	100.0	102.6	102.4	103.7	102.6	101.7	0.2	(1.1)	0.0	0.9

TABLE 3: CONSUMER PRICE INDEX BY TRADEABILITY (DECEMBER 2018 = 100.0)

	All Items		Non-Tradable		Domestic Tradable		Imported Tradable		All Tradable		
	Index	Inflation	Index	Inflation	Index	Inflation	Index	Inflation	Index	Inflation	
Weights	100.00		42.29		15.46		42.26		57.71		
2017	Jan	94.0	3.1	93.1	4.3	98.8	4.3	92.6	1.7	94.5	2.6
	Feb	94.2	3.4	93.2	4.3	99.3	4.3	92.9	2.4	94.8	3.1
	Mar	94.7	3.5	93.4	3.9	99.7	4.6	93.6	2.9	95.4	3.5
	Apr	95.4	3.4	94.9	3.8	100.0	4.3	93.8	2.7	95.7	3.3
	May	95.6	3.5	95.0	3.7	100.2	4.3	94.0	2.9	95.9	3.4
	Jun	95.8	3.5	95.4	3.6	100.1	4.2	94.2	2.9	96.0	3.4
	Jul	95.9	3.4	95.6	3.7	99.9	3.8	94.4	3.0	96.1	3.3
	Aug	96.0	3.4	95.6	3.7	99.8	3.4	94.6	3.1	96.2	3.2
	Sept	96.1	3.2	95.9	3.5	99.2	2.6	94.7	3.1	96.1	3.0
	Oct	96.1	3.0	96.0	3.4	99.1	2.2	94.8	3.0	96.1	2.8
	Nov	96.2	2.9	95.9	3.4	98.9	1.6	95.2	3.1	96.4	2.7
	Dec	96.6	3.2	96.3	3.7	98.9	1.3	95.8	3.7	96.8	3.0
2018	Jan	97.0	3.1	96.7	3.9	99.3	0.5	96.1	3.8	97.1	2.8
	Feb	97.2	3.2	96.9	4.0	99.6	0.3	96.4	3.8	97.4	2.8
	Mar	97.4	2.8	97.1	4.0	99.8	0.1	96.5	3.1	97.5	2.2
	Apr	98.7	3.4	100.4	5.8	99.9	-0.1	96.7	3.1	97.7	2.1
	May	98.7	3.3	100.5	5.7	100.0	-0.2	96.8	3.0	97.7	2.0
	Jun	98.8	3.1	99.7	4.4	99.9	-0.2	97.5	3.6	98.2	2.4
	Jul	98.8	3.1	99.8	4.4	99.9	-0.1	97.6	3.4	98.3	2.3
	Aug	98.8	3.0	99.8	4.4	99.8	0.0	97.6	3.2	98.3	2.2
	Sept	98.9	2.9	100.0	4.3	99.8	0.6	97.5	2.9	98.2	2.1
	Oct	99.5	3.6	99.9	4.1	99.7	0.7	99.1	4.5	99.3	3.3
	Nov	99.9	3.8	99.9	4.2	99.9	1.0	99.9	4.9	99.9	3.7
	Dec	100.0	3.5	100.0	3.9	100.0	1.1	100.0	4.4	100.0	3.4
2019	Jan	100.3	3.5	100.2	3.6	100.8	1.5	100.3	4.4	100.4	3.4
	Feb	100.5	3.3	100.2	3.5	100.9	1.4	100.5	4.2	100.6	3.3
	Mar	100.6	3.3	100.3	3.3	101.3	1.5	100.6	4.2	100.7	3.3
	Apr	101.2	2.5	101.3	0.9	101.8	1.9	100.8	4.3	101.1	3.5
	May	101.3	2.6	101.3	0.8	102.3	2.4	101.0	4.4	101.4	3.7
	Jun	101.5	2.8	101.6	2.0	102.5	2.6	101.0	3.6	101.4	3.2
	Jul	101.7	2.9	101.8	2.0	102.7	2.9	101.2	3.7	101.6	3.4
	Aug	101.7	2.9	101.8	2.0	103.0	3.2	101.3	3.7	101.7	3.5
	Sept	101.8	3.0	101.9	1.9	103.2	3.4	101.2	3.9	101.7	3.6
	Oct	101.9	2.4	101.9	2.0	103.3	3.5	101.3	2.3	101.8	2.6
	Nov	102.0	2.1	102.0	2.1	103.4	3.5	101.5	1.6	102.0	2.1
	Dec	102.2	2.2	102.2	2.2	103.7	3.7	101.6	1.6	102.1	2.1
2020	Jan	102.6	2.2	102.5	2.4	105.0	4.2	101.8	1.5	102.6	2.2
	Feb	102.7	2.2	102.6	2.3	105.4	4.4	102.0	1.4	102.8	2.2
	Mar	102.8	2.2	102.6	2.3	105.6	4.2	102.0	1.4	102.9	2.1
	Apr	103.7	2.5	104.6	3.3	106.0	4.1	102.1	1.2	103.1	2.0
	May	103.7	2.4	104.7	3.3	106.6	4.2	101.8	0.8	103.1	1.7
	Jun	102.4	0.9	104.7	3.0	107.7	5.1	98.3	-2.7	100.8	-0.6
	Jul	102.6	0.9	104.7	2.9	108.1	5.2	98.5	-2.7	101.0	-0.6
% Change on last month		0.2		0.0		0.4		0.2		0.3	

TABLE 4: CORE INFLATION RATES BY EXCLUSION AND TRIMMED MEAN

Year	Month	Consumer Price Index (Trimmed Mean) (September 2016 = 100)	Core Monthly Inflation Rate (Trimmed Mean) (percentage)	Consumer Price Index (Excluding Administered Prices) (September 2016 = 100)	Core Monthly Inflation (Excluding Administered Prices) (percentage)
2017	Jan	93.5	2.7	96.6	3.9
	Feb	93.7	2.9	96.9	3.9
	Mar	94.2	3.1	97.2	3.9
	Apr	94.4	3.1	97.5	3.3
	May	94.5	3.1	97.7	3.4
	Jun	94.8	2.9	97.9	3.3
	Jul	94.9	2.9	98.1	3.3
	Aug	95.0	2.9	98.2	3.3
	Sept	95.1	2.7	98.2	3.0
	Oct	95.2	2.6	98.2	2.8
	Nov	95.4	2.5	98.2	2.4
	Dec	95.8	2.9	98.2	2.3
2018	Jan	96.1	2.8	98.7	2.2
	Feb	96.4	2.9	99.0	2.2
	Mar	96.6	2.6	99.2	2.0
	Apr	97.6	3.1	99.4	1.9
	May	97.7	3.0	99.5	1.8
	Jun	98.6	3.2	99.6	1.8
	Jul	98.7	3.1	99.7	1.7
	Aug	98.7	3.0	99.7	1.6
	Sept	98.8	2.9	99.8	1.6
	Oct	99.5	3.7	99.8	1.6
	Nov	99.6	3.8	99.9	1.7
	Dec	100.0	3.6	100.0	1.8
2019	Jan	100.4	3.6	100.4	1.8
	Feb	100.5	3.5	100.6	1.6
	Mar	100.6	3.5	100.8	1.6
	Apr	101.3	2.6	101.0	1.7
	May	101.5	2.7	101.4	1.9
	Jun	101.2	2.5	101.6	2.0
	Jul	101.5	2.6	101.8	2.1
	Aug	101.5	2.7	101.9	2.2
	Sept	101.6	2.7	102.1	2.3
	Oct	101.6	2.1	102.1	2.3
	Nov	101.7	1.7	102.3	2.4
	Dec	101.8	1.8	102.5	2.5
2020	Jan	102.2	1.9	103.2	2.7
	Feb	102.4	1.9	103.4	2.7
	Mar	102.5	1.9	103.5	2.7
	Apr	102.7	1.8	103.8	2.6
	May	103.0	1.6	104.0	2.6
	Jun	102.7	1.0	104.4	2.8
	Jul	102.9	1.0	104.7	2.8

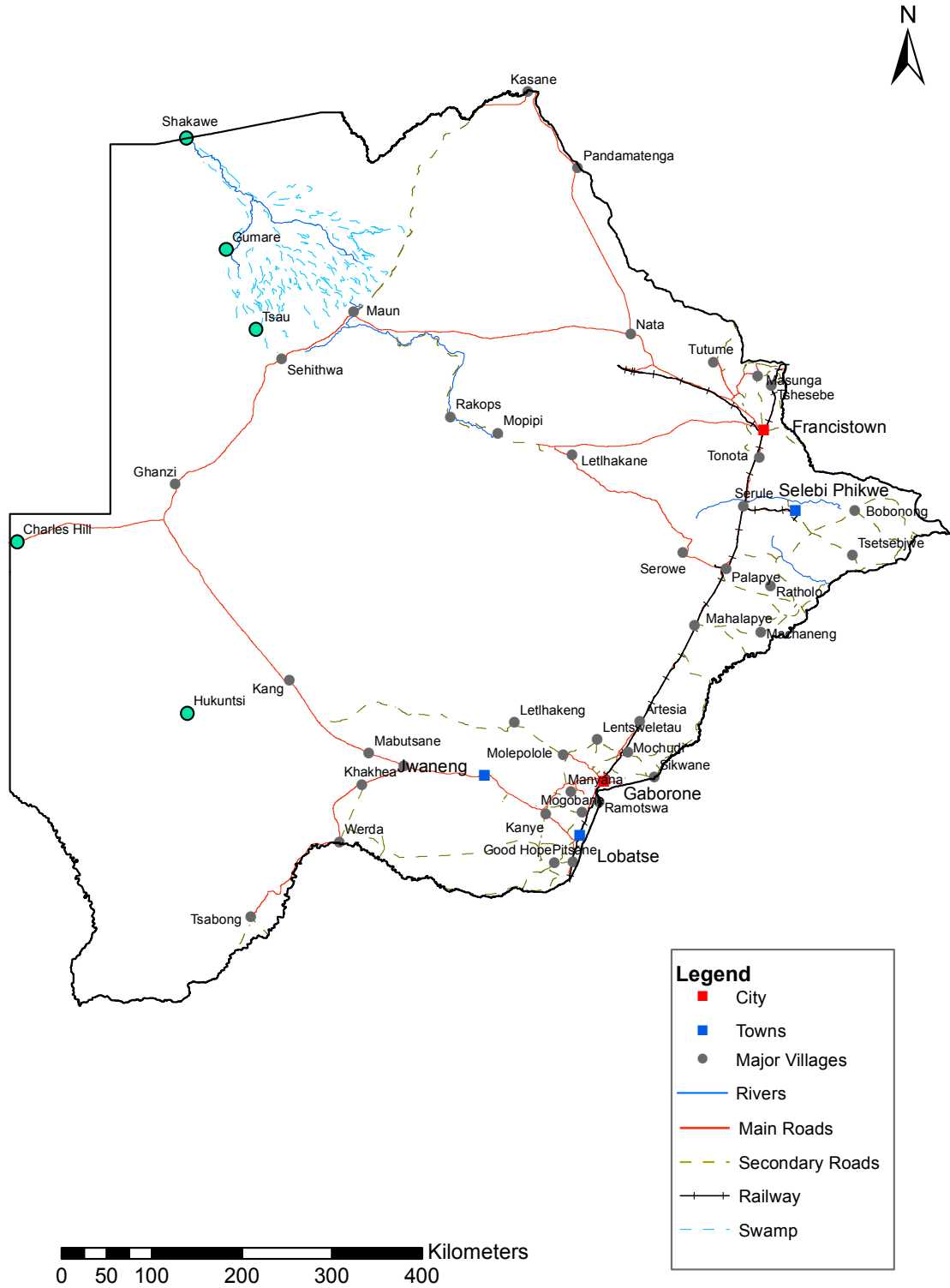
Table 5: Contributions of Groups to Annual Inflation Rate

Group Code	Group Name	CONTRIBUTIONS		
		May-20	June-20	July-20
0	All Items CPI Rate	2.4	0.9	0.9
1	Food & Non-Alcoholic Beverages	0.4	0.5	0.5
2	Alcoholic Beverages & Tobacco	0.1	0.2	0.3
3	Clothing & Footwear	0.1	0.1	0.1
4	Housing, Water, Electricity, Gas & Other Fuels	1.1	1.0	1.0
5	Furnishing, Household Equipment & Routine Maintenance	0.1	0.1	0.1
6	Health	0.0	0.0	0.0
7	Transport	-0.0	-1.6	-1.6
8	Communication	0.0	0.0	0.0
9	Recreation & Culture	-0.0	-0.0	-0.0
10	Education	0.2	0.2	0.2
11	Restaurants & Hotels	0.1	0.1	0.1
12	Miscellaneous Goods & Services	0.1	0.1	0.0

Table 6: Average Annual Inflation (December 2018=100)

Group	Weights	2009	2010	2011	2012	2013	2014	2015	2016	2017	2018	2019
1 Food & Non-Alcoholic Beverages	13.55	14.7	3.6	6.9	8.0	5.4	3.0	1.3	2.7	3.4	(0.5)	1.4
2 Alcoholic Beverages & Tobacco	4.34	35.2	7.1	8.4	7.6	10.3	9.0	6.1	2.5	4.5	1.1	2.8
3 Clothing & Footwear	5.95	8.4	8.0	8.9	7.5	6.3	6.0	7.6	6.5	3.2	1.8	1.3
4 Housing, Water, Electr. Gas & Other Fuels	17.45	4.8	6.4	8.4	7.7	4.3	3.9	7.1	6.3	5.4	4.1	2.1
5 Furnishing, H/H Equipment & Routine Maintenance	4.85	11.9	9.4	9.0	7.3	4.9	5.0	6.1	3.0	3.3	2.1	2.1
6 Health	3.38	5.5	2.7	4.5	5.9	5.5	8.3	6.3	3.0	2.4	1.1	1.0
7 Transport	23.43	(8.4)	12.1	13.2	10.8	7.3	1.2	(5.1)	(2.7)	1.6	7.5	6.2
8 Communication	6.94	(0.3)	1.2	(3.0)	(1.4)	0.3	0.3	0.3	0.2	0.5	(4.6)	(3.8)
9 Recreation & Culture	2.82	5.0	6.0	8.3	5.8	4.5	4.2	5.7	3.0	2.2	1.8	0.4
10 Education	4.60	3.9	5.8	10.6	6.4	4.7	7.4	6.4	3.7	4.1	5.5	3.1
11 Restaurants & Hotels	3.66	18.8	9.0	9.3	8.4	7.9	7.6	5.5	4.0	3.7	3.4	2.5
12 Miscellaneous Goods & Services	9.01	3.8	7.0	5.3	2.0	1.2	5.2	7.2	7.5	3.9	6.4	5.3
All-Items Index	100.0	8.2	6.9	8.5	7.5	5.9	4.4	3.1	2.8	3.3	3.2	2.8

CPI AREA COVERAGE



Compiled and Prepared by Statistics Botswana, 2016

GLOSSARY

Consumer Price Index (CPI) is an index which measures price changes in goods and services with reference to a base period.

Inflation is a measurement of prices movement of goods and services in a particular country.

Domestic Tradeables refers to the goods and services which a country (Botswana) can export to other countries.

Imported Tradeables represents the goods and services which a country (Botswana) imports from other countries (trading partners).

Non-Tradeables refers to the goods and services which a country cannot either export or import to other countries.

All –Tradeables refers to the total of **Domestic** and **Imported Tradeables**.

Trimmed Mean Core Inflation- attempts to remove 8 percent (by weight) of the commodity sub-groups with the largest price changes at each of the ends of an ordered series of price changes in any given month.

Core inflation by Exclusion is a measure used to remove the volatility inherent in prices that are only adjusted periodically and not always in response to currently prevailing market forces.