

STATISTICS BOTSWANA

Consumer Price Index

JANUARY 2019



Contact Statistician:
Phaladi Labobedi

Statistics Botswana, Private Bag 0024 Gaborone Botswana

Tel: (+267) 367 1300. **Toll Free:** 0800 600 200 **Fax:** (+267) 395 2201. **Email:** info@statsbots.org.bw **Website:** www.statsbots.org.bw

CONTENTS

Section 1: HEADLINE INFLATION	3
Section 2: CORE INFLATION	3
GLOSSARY	13

CHARTS

CHART 1: NATIONAL RATES OF INFLATION	4
CHART 2: MONTHLY CHANGES IN THE CONSUMER PRICE INDEX	4
CHART 3: NON-TRADEABLES INFLATION RATES	4
CHART 4: TRADEABLES INFLATION RATES	4

TABLES

TABLE 1: CONSUMER PRICE INDEX (DECEMBER 2018 = 100.0)	5
TABLE 2: NATIONAL CONSUMER PRICE GROUP AND SECTION INDICES (DECEMBER 2018 = 100.0)	7
TABLE 3: CONSUMER PRICE INDEX BY TRADEABILITY (DECEMBER 2018 = 100.0)	9
TABLE 4: CORE INFLATION RATES BY EXCLUSION AND TRIMMED MEAN	10
TABLE 5: AVERAGE ANNUAL INFLATION (DECEMBER 2018 = 100.0)	11

COMMENTARY

SECTION 1: HEADLINE INFLATION

The Botswana Consumer Price Index (CPI) has been rebased to December 2018, from the previous base period of September 2016. Details about the rebasing are given in Appendices 1 to 3.

The annual inflation rate in January 2019 was 3.5 percent, the same rate as in December 2018. The inflation rates for regions between December 2018 and January 2019 showed that Cities & Towns dropped to 4.1 percent from 4.2 percent, Urban Villages went down to 3.4 percent from 3.5 percent, while the Rural Villages also went down to 2.4 percent from 2.5 percent.

The national Consumer Price Index moved to 100.3 in January 2019, registering an increase of 0.3 percent from 100.0, which was recorded in December 2018. The Cities & Towns advanced from 100.0 to 100.4 registering an increase of 0.4 percent. The Urban Villages' Index realised an increase of 0.3 percent moving from 100.0 in December 2018 to 100.3 in January 2019. The Rural Villages moved from 100.0 to 100.2 registering an increase of 0.2 percent.

Group indices were generally moving at a steady pace between December 2018 and January 2019, recording changes of less than 1.0 percent.

The Education Group index recorded an increase of 3.0 percent, from 100.0 in December 2018 to 103.0 in January 2019. The constituent section indices of Pre-primary & Primary Education and Secondary & Tertiary Education recorded increases of 3.0 and 2.9 percent respectively. The Pre-primary & Primary Education section index was 103.0 in January, up from 100.0 in December. The Secondary & Tertiary Education section index moved from 100.0 in December to 102.9 in the month under review. The rise was mainly attributed to increases in the private secondary and pre-primary & primary education school fees.

The Transport group index registered an increase of 0.3 percent, from 100.0 in December 2018 to 100.3 in January 2019. This was due to the rise in the constituent section index of Purchase of Vehicles (1.1 percent).

The Food & Non-Alcoholic Beverages group Index moved from 100.0 in December 2018 to 100.4 in January 2019, recording an increase of 0.4 percent. The increase was credited to the general growth in the section indices.

The *All-Tradeables index* moved from 100.0 in December 2018 to 100.4 in January 2019, registering an increase of 0.4 percent. The *Domestic Tradeables Index* recorded an increase of 0.8 percent, moving from 100.0 in December to 100.8 in January. The *Imported Tradeables Index* realised a rise of 0.3 percent over the two periods. The *Non-Tradeables Index* recorded an increase of 0.2 percent, moving from 100.0 in December 2018 to 100.2 in January 2019.

All-Tradeables inflation rate was 3.4 percent in January 2019, the same rate as in December 2018. The *Domestic Tradeables* inflation rate went up from 1.1 percent in December to 1.5 percent in January. The *Non-Tradeables* inflation rate went down from 3.9 percent in December to 3.6 percent in January, while the *Imported Tradeables* inflation rate remained unchanged at 4.4 percentage, over the two months.

SECTION 2: CORE INFLATION

The Trimmed Mean Core and Core Inflation rate by exclusion remained unchanged in January 2019 at 3.6 and 1.8 percent respectively.

CHARTS

Chart 1: National Inflation Rate 2016 - 2019

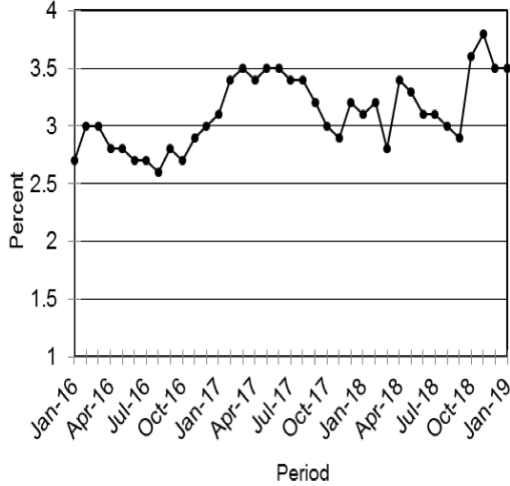


Chart 2: Monthly Changes in Consumer Price Index 2016 - 2019

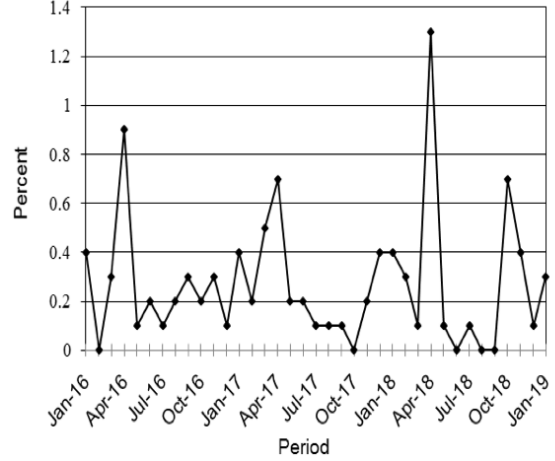


Chart 3: Non-Tradeables Inflation 2016 - 2019

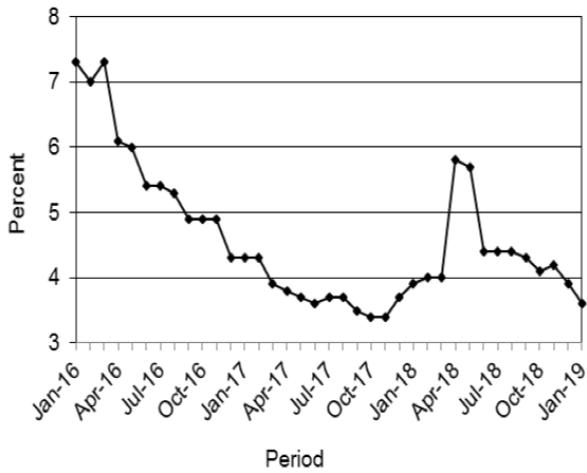
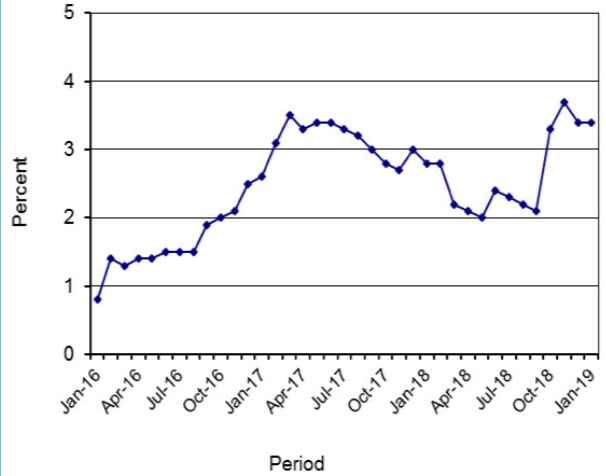


Chart 4: Tradeables Inflation 2016 - 2019



M. Kerekang
Act. Statistician General
 5th March 2019

TABLES

TABLE 1 : CONSUMER PRICE INDEX (December 2018 =100.0)

		Food	Alcohol and Tobacco	Clothing and Footwear	Housing	Furniture etc	Health	Transport	Communication	Rec. & Culture	Education	Rest. & Hotels	Miscellaneous
	Weights	13.55	4.34	5.95	17.45	4.85	3.38	23.43	6.94	2.82	4.60	3.66	9.01
2016	Jan	95.8	93.2	92.4	88.4	93.2	94.5	87.6	108.8	95.1	91.0	90.9	85.0
	Feb	96.3	93.4	93.0	88.3	93.3	94.6	86.4	108.8	95.6	91.0	91.2	84.7
	Mar	96.6	93.4	93.5	89.5	93.5	94.6	86.5	108.8	95.7	91.0	91.4	84.9
	Apr	97.4	93.9	94.0	89.5	93.6	94.9	86.6	108.8	95.8	91.0	91.7	90.4
	May	97.5	94.1	94.4	89.4	93.7	96.7	86.7	108.8	95.8	91.0	91.8	90.4
	Jun	97.2	94.2	94.9	90.2	94.2	96.8	87.0	108.8	95.8	91.0	92.2	90.7
	Jul	97.5	94.5	95.1	90.1	94.3	96.8	87.1	108.8	95.9	91.0	92.2	90.8
	Aug	97.8	94.6	95.3	90.2	94.5	96.8	87.1	108.8	96.0	91.0	92.5	90.8
	Sept	98.1	94.6	95.4	91.1	94.9	96.8	87.1	108.8	96.2	91.0	92.9	90.8
	Oct	98.5	95.2	95.6	91.1	95.0	96.8	87.1	108.8	96.3	91.0	93.1	91.2
	Nov	99.0	95.8	96.0	91.2	95.5	97.0	87.2	108.8	96.4	91.0	93.4	91.3
	Dec	99.1	95.8	96.1	91.3	95.7	97.1	87.3	108.8	96.4	91.0	93.5	91.3
2017	Jan	100.0	96.8	96.5	91.5	96.1	97.6	86.8	108.9	96.8	94.7	94.2	91.5
	Feb	100.4	97.4	96.8	91.6	96.5	97.7	87.0	108.9	97.2	94.7	94.4	91.7
	Mar	100.9	97.9	97.0	92.0	96.9	97.8	87.9	108.9	97.4	94.7	94.8	92.0
	Apr	101.1	98.5	97.2	95.5	97.0	97.9	88.0	108.9	98.1	94.7	95.0	92.2
	May	101.5	99.0	97.4	95.5	97.2	98.0	88.1	109.0	98.1	94.7	95.3	92.3
	Jun	101.4	99.0	97.5	95.7	97.4	98.6	88.3	109.2	98.2	94.8	95.5	93.2
	Jul	101.6	99.1	97.9	95.8	97.6	98.7	88.3	109.2	98.3	94.8	95.9	93.2
	Aug	101.5	99.2	98.1	95.8	97.7	98.8	88.5	109.2	98.4	94.8	96.2	93.2
	Sept	100.9	99.3	98.3	96.4	97.9	98.8	88.6	110.3	98.3	94.8	96.4	93.3
	Oct	100.8	99.1	98.4	96.3	98.0	98.8	88.6	110.3	98.4	94.9	96.6	93.4
	Nov	100.7	99.0	98.4	96.3	98.1	98.9	89.4	110.3	98.3	94.9	96.6	93.4
	Dec	100.2	99.1	98.5	96.7	97.9	98.9	90.9	110.1	98.5	94.9	97.1	93.9
2018	Jan	100.4	99.1	98.6	96.8	98.1	99.0	91.2	110.2	98.7	99.9	97.4	94.2
	Feb	100.8	99.2	98.7	96.9	98.4	99.1	91.5	110.2	99.0	99.9	97.8	94.7
	Mar	100.9	99.3	98.9	97.2	99.0	99.2	91.4	110.3	99.4	100.0	97.9	94.9
	Apr	101.0	99.2	99.3	98.6	99.1	99.2	93.5	110.3	100.0	100.0	98.4	100.0
	May	100.9	99.5	99.5	98.7	99.2	99.4	93.6	110.3	100.1	100.0	98.6	100.1
	Jun	100.7	99.7	99.6	99.2	99.5	99.4	95.0	100.2	100.1	100.0	99.0	100.2
	Jul	100.5	99.9	99.9	99.2	99.6	99.5	95.1	100.2	100.2	100.0	99.4	100.3
	Aug	100.2	100.1	99.8	99.3	99.6	99.5	95.2	100.2	100.2	100.0	99.5	100.3
	Sept	99.9	100.1	99.8	99.7	100.0	99.7	95.0	100.2	100.2	100.0	99.7	100.2
	Oct	99.8	100.2	99.7	99.7	100.0	99.8	98.4	100.2	99.8	100.0	99.7	99.8
	Nov	99.9	100.2	99.8	99.9	100.1	99.9	99.8	100.2	99.9	100.0	99.7	99.8
	Dec	100.0	100.0	100.0	100.0	100.0	100.0	100.0	100.0	100.0	100.0	100.0	100.0
2019	Jan	100.4	99.8	100.2	100.1	100.2	100.1	100.3	100.0	100.1	103.0	100.0	100.3
	% Change on Last month	0.4	(0.2)	0.2	0.1	0.2	0.1	0.3	0.0	0.1	3.0	0.0	0.3

TABLE 1: CONSUMER PRICE INDEX (Cont.)

		All Items Index	National Inflation Rate	Monthly Change	Towns & Cities Index	Urban Village Index	Rural Villages Index	Annual Inflation		
								Towns & Cities	Urban Villages	Rural Villages
		100.0	%	%	41.8	34.5	23.7	%	%	%
2016	Jan	91.2	2.7	0.4	90.3	91.8	91.8	2.7	2.6	2.8
	Feb	91.2	3.0	(0.0)	90.1	91.9	92.0	2.9	3.2	3.1
	Mar	91.5	3.0	0.3	90.5	92.2	92.1	3.1	3.2	2.7
	Apr	92.3	2.8	0.9	91.4	93.0	92.7	2.6	3.2	2.7
	May	92.4	2.8	0.1	91.5	93.1	92.9	2.7	3.1	2.5
	Jun	92.6	2.7	0.2	91.7	93.2	93.1	2.5	2.8	2.6
	Jul	92.7	2.7	0.1	91.8	93.3	93.6	2.5	2.7	3.0
	Aug	92.9	2.6	0.2	92.0	93.4	93.7	2.6	2.6	2.9
	Sept	93.1	2.8	0.3	92.3	93.5	93.9	2.8	2.7	2.9
	Oct	93.3	2.7	0.2	92.4	93.7	94.2	2.5	2.7	3.1
	Nov	93.5	2.9	0.3	92.6	93.9	94.6	2.7	2.9	3.5
	Dec	93.6	3.0	0.1	92.7	93.9	94.7	2.8	3.0	3.5
2017	Jan	94.0	3.1	0.4	93.1	94.3	95.1	3.1	2.8	3.6
	Feb	94.2	3.4	0.2	93.3	94.6	95.5	3.5	2.9	3.8
	Mar	94.7	3.5	0.5	93.8	95.0	95.9	3.6	3.0	4.2
	Apr	95.4	3.4	0.7	94.4	95.8	96.5	3.3	3.0	4.2
	May	95.6	3.5	0.2	94.6	96.0	96.8	3.4	3.1	4.1
	Jun	95.8	3.5	0.2	94.8	96.2	96.8	3.4	3.3	3.9
	Jul	95.9	3.4	0.1	95.0	96.3	97.0	3.5	3.2	3.7
	Aug	96.0	3.4	0.1	95.0	96.4	97.1	3.4	3.2	3.6
	Sept	96.1	3.2	0.1	95.2	96.3	97.2	3.2	3.0	3.4
	Oct	96.1	3.0	0.0	95.2	96.2	97.3	3.0	2.7	3.3
	Nov	96.2	2.9	0.2	95.5	96.4	97.4	3.1	2.6	3.0
	Dec	96.6	3.2	0.4	96.0	96.6	97.6	3.6	2.9	3.1
2018	Jan	97.0	3.1	0.4	96.4	97.0	97.8	3.6	2.9	2.8
	Feb	97.2	3.2	0.3	96.7	97.3	98.1	3.6	2.9	2.7
	Mar	97.4	2.8	0.1	96.8	97.5	98.1	3.3	2.6	2.3
	Apr	98.7	3.4	1.3	98.4	98.7	99.1	4.2	3.1	2.7
	May	98.7	3.3	0.1	98.5	98.8	99.1	4.1	3.0	2.5
	Jun	98.8	3.1	0.0	98.6	98.8	99.0	4.0	2.7	2.3
	Jul	98.8	3.1	0.1	98.7	98.9	99.1	3.9	2.7	2.1
	Aug	98.8	3.0	(0.0)	98.6	98.9	99.1	3.8	2.6	2.0
	Sept	98.9	2.9	0.0	98.7	98.9	99.1	3.6	2.7	2.0
	Oct	99.5	3.6	0.7	99.5	99.5	99.7	4.4	3.4	2.5
	Nov	99.9	3.8	0.4	99.9	99.8	100.0	4.7	3.6	2.6
	Dec	100.0	3.5	0.1	100.0	100.0	100.0	4.2	3.5	2.5
2019	Jan	100.3	3.5	0.3	100.4	100.3	100.2	4.1	3.4	2.4
% Change on last month		0.3			0.4	0.3	0.2			

TABLE 2 : NATIONAL CONSUMER PRICE GROUP AND SECTION INDICES (DECEMBER 2018 = 100.0)

	Group Section	Weights	This month Jan 2019	Last month Dec 2018	3 months ago Oct 2018	6 months ago Jul 2018	12 months ago Jan 2018	Percentage Change on:			
								Last month	3 months ago	6 months ago	12 months ago
1	Food & Non-Alcoholic Beverages	13.55	100.4	100.0	99.8	100.5	100.4	0.4	0.6	(0.1)	(0.0)
1.1	Bread & Cereals	4.26	100.2	100.0	100.1	101.6	103.8	0.2	0.1	(1.4)	(3.4)
1.2	Meat (Fresh, Chilled & Frozen)	2.36	100.6	100.0	99.7	100.3	99.9	0.6	0.9	0.3	0.7
1.3	Fish (Fresh, Chilled & Frozen)	0.18	100.3	100.0	100.4	100.1	97.9	0.3	(0.1)	0.2	2.4
1.4	Milk, Cheese & Milk Products	0.98	100.1	100.0	99.9	98.6	97.0	0.1	0.2	1.5	3.2
1.5	Oils & Fats	0.92	99.9	100.0	100.8	101.4	101.3	(0.1)	(1.0)	(1.5)	(1.4)
1.6	Fruit	0.78	100.9	100.0	98.6	99.6	97.5	0.9	2.3	1.3	3.5
1.7	Vegetables	1.08	101.0	100.0	100.6	102.5	100.9	1.0	0.4	(1.4)	0.1
1.8	Sugar, Jam, Honey, Chocolate & Confectionery	1.11	100.1	100.0	97.5	97.8	98.8	0.1	2.7	2.3	1.3
1.9	Food not else where Classified	0.54	100.6	100.0	99.5	100.3	98.6	0.6	1.1	0.3	2.1
1.10	Coffee, Tea & Cocoa	0.73	100.7	100.0	99.3	98.4	96.4	0.7	1.3	2.3	4.4
1.11	Mineral Waters, Soft Drinks, Fruits & Vegetables Juices	0.62	100.5	100.0	100.2	99.7	98.0	0.5	0.3	0.7	2.5
2	Alcoholic Beverages & Tobacco	4.34	99.8	100.0	100.2	99.9	99.1	(0.2)	(0.4)	(0.1)	0.7
2.1	Alcoholic Beverages	3.51	99.6	100.0	100.2	99.9	99.2	(0.4)	(0.6)	(0.3)	0.5
2.2	Tobacco	0.82	100.3	100.0	100.1	99.9	98.8	0.3	0.2	0.4	1.5
3	Clothing & Footwear	5.95	100.2	100.0	99.7	99.9	98.6	0.2	0.5	0.3	1.6
3.1	Clothing	2.60	100.2	100.0	99.6	100.1	98.8	0.2	0.6	0.1	1.5
3.2	Other Articles of Clothing	0.72	100.4	100.0	100.0	99.8	98.1	0.4	0.4	0.6	2.4
3.3	Cleaning, Repair & Hire	0.61	100.0	100.0	99.5	98.7	96.6	0.0	0.5	1.3	3.5
3.4	Footwear	2.03	100.1	100.0	99.9	100.3	99.7	0.1	0.3	(0.2)	0.4
4	Housing, Water, Electr. Gas & Other Fuels	17.45	100.1	100.0	99.7	99.2	96.8	0.1	0.4	0.9	3.4
4.1	Rent Paid by Tenants	7.78	100.0	100.0	100.0	99.0	97.7	0.0	0.0	1.0	2.4
4.2	Materials for Maintenance & Repair of Dwellings	3.83	100.4	100.0	99.4	99.2	97.5	0.4	1.0	1.2	3.0
4.3	Water Supply & Miscellaneous Services	1.96	100.0	100.0	100.0	100.0	100.0	0.0	0.0	0.0	0.0
4.4	Electricity, Gas & Other Fuels	3.89	100.0	100.0	99.3	99.0	92.2	(0.0)	0.7	1.0	8.5
5	Furnishing, H/H Equipment & Routine Maintenance	4.85	100.2	100.0	100.0	99.6	98.1	0.2	0.2	0.7	2.1
5.1	Furniture & Furnishing	1.35	100.2	100.0	99.7	99.5	98.2	0.2	0.5	0.8	2.1
5.2	Carpets & Other Floor Coverings	0.27	100.2	100.0	99.6	99.5	98.0	0.2	0.5	0.6	2.2
5.3	Household Textiles	0.29	99.9	100.0	99.8	99.7	98.8	(0.1)	0.1	0.3	1.1
5.4	Household Appliances	0.72	100.1	100.0	100.0	100.2	99.6	0.1	0.1	(0.1)	0.5
5.5	Glassware, Tableware & Household Utensils	0.23	100.4	100.0	99.8	99.3	98.7	0.4	0.5	1.0	1.7
5.6	Small Tools, Miscellaneous Accessories	0.04	100.5	100.0	100.9	100.4	99.0	0.5	(0.4)	0.1	1.5
5.7	Goods & Services for Household Maintenance	1.95	100.3	100.0	100.2	99.4	97.5	0.3	0.1	0.9	2.9

TABLE 2 : NATIONAL CONSUMER PRICE GROUP AND SECTION INDICES (DECEMBER 2018 = 100.0) Cont'd

	Group Section	Weights	This month Jan 2019	Last month Dec 2018	3 months ago Oct 2018	6 months ago Jul 2018	12 months ago Jan 2018	Percentage Change on:			
								Last month	3 months ago	6 months ago	12 months ago
6	Health	3.38	100.1	100.0	99.8	99.5	99.0	0.1	0.3	0.7	1.1
6.1	Medical Products, Applications & Equipments	0.98	100.5	100.0	99.5	98.0	96.2	0.5	1.0	2.5	4.5
6.2	Out-patient Services	0.93	100.0	100.0	99.7	99.8	99.6	0.0	0.3	0.2	0.4
6.3	Hospital Services	1.47	100.0	100.0	100.0	100.0	100.0	0.0	0.0	0.0	0.0
7	Transport	23.43	100.3	100.0	98.4	95.1	91.2	0.3	1.9	5.4	9.9
7.1	Purchase of Vehicles	5.74	101.1	100.0	99.0	97.7	96.1	1.1	2.1	3.4	5.1
7.2	Operation of Personal Transport	12.56	100.0	100.0	97.5	92.3	89.6	0.0	2.6	8.4	11.6
7.3	Transport Services	5.13	100.0	100.0	100.0	100.0	89.9	0.0	0.0	0.0	11.3
8	Communication	6.94	100.0	100.0	100.2	100.2	110.2	0.0	(0.2)	(0.2)	(9.3)
8.1	Postal Services	0.21	100.0	100.0	100.0	100.0	100.0	0.0	0.0	0.0	0.0
8.2	Telephone & Telefax Equipment	1.13	100.0	100.0	101.0	100.8	100.2	0.0	(1.0)	(0.8)	(0.2)
8.3	Telephone & Telefax Services	5.60	100.0	100.0	100.0	100.0	113.2	0.0	(0.0)	(0.0)	(11.7)
9	Recreation & Culture	2.82	100.1	100.0	99.8	100.2	98.7	0.1	0.3	(0.1)	1.5
9.1	Audio Visual, Photographic & Information Processing Equipment	2.10	100.1	100.0	99.8	100.4	98.9	0.1	0.3	(0.3)	1.3
9.2	Other Recreational Items & Equipments	0.30	100.2	100.0	99.7	100.0	99.3	0.2	0.5	0.2	0.9
9.3	Recreational & Cultural Services	0.31	100.0	100.0	100.0	100.0	97.3	0.0	0.0	0.0	2.7
9.4	Newspapers, Books & Stationary	0.11	100.0	100.0	99.4	99.2	97.4	0.0	0.6	0.9	2.6
10	Education	4.60	103.0	100.0	100.0	100.0	99.9	3.0	3.0	3.0	3.0
10.1	Pre-Primary & Primary Education	1.89	103.0	100.0	100.0	100.0	99.9	3.0	3.0	3.1	3.1
10.2	Secondary & Tertiary Education	2.70	102.9	100.0	100.0	100.0	99.9	2.9	2.9	3.0	3.0
11	Restaurants & Hotels	3.66	100.0	100.0	99.7	99.4	97.4	0.0	0.3	0.6	2.7
11.1	Restaurants, Cafes and the Like	3.02	100.0	100.0	99.6	99.5	97.6	(0.0)	0.4	0.5	2.4
11.2	Accommodation Services	0.64	100.2	100.0	100.0	99.3	96.2	0.2	0.3	1.0	4.3
12	Miscellaneous Goods & Services	9.01	100.3	100.0	99.8	100.3	94.2	0.3	0.5	(0.1)	6.4
12.1	Personal Care	2.33	100.5	100.0	100.1	100.2	98.3	0.5	0.4	0.3	2.3
12.2	Personal Effects Not Elsewhere Classified	0.22	100.0	100.0	99.7	100.5	99.5	0.0	0.3	(0.4)	0.5
12.3	Social Protection	0.13	101.6	100.0	100.0	100.0	100.0	1.6	1.6	1.6	1.6
12.4	Insurance	3.62	100.2	100.0	99.7	100.7	89.1	0.2	0.5	(0.4)	12.5
12.5	Financial Services	1.09	100.0	100.0	99.0	98.9	96.9	0.0	1.0	1.1	3.2
12.6	Taxes, Licences & Fees	1.61	100.0	100.0	100.0	100.0	99.2	0.0	0.1	(0.0)	0.8
	All-Items Index	100.0	100.3	100.0	99.5	98.8	97.0	0.3	0.8	1.5	3.5

Table 3: CONSUMER PRICE INDEX BY TRADEABILITY (December 2018 = 100.0)

	All Items		Non-Tradeables		Domestic Tradeables		Imported Tradeables		All Tradeables		
	Index	Inflation	Index	Inflation	Index	Inflation	Index	Inflation	Index	Inflation	
Weights	100.00		42.29		15.46		42.26		57.71		
2016	Jan	91.2	2.7	89.3	7.3	94.7	2.6	91.0	-0.3	92.0	0.8
	Feb	91.2	3.0	89.3	7.0	95.1	2.5	90.7	0.7	92.0	1.4
	Mar	91.5	3.0	89.8	7.3	95.3	2.1	91.0	0.8	92.2	1.3
	Apr	92.3	2.8	91.5	6.1	95.9	2.3	91.3	0.9	92.6	1.4
	May	92.4	2.8	91.7	6.0	96.1	2.5	91.4	0.8	92.7	1.4
	Jun	92.6	2.7	92.1	5.4	96.0	2.5	91.5	0.9	92.8	1.5
	Jul	92.7	2.7	92.2	5.4	96.2	2.8	91.6	0.7	93.0	1.5
	Aug	92.9	2.6	92.2	5.3	96.6	3.0	91.7	0.6	93.2	1.5
	Sept	93.1	2.8	92.7	4.9	96.7	3.5	91.9	0.9	93.3	1.9
	Oct	93.3	2.7	92.8	4.9	97.0	3.1	92.1	0.9	93.5	1.9
	Nov	93.5	2.9	92.8	4.9	97.4	3.4	92.4	1.2	93.9	2.1
	Dec	93.6	3.0	92.8	4.3	97.6	3.6	92.4	1.8	94.0	2.5
2017	Jan	94.0	3.1	93.1	4.3	98.8	4.3	92.6	1.7	94.5	2.6
	Feb	94.2	3.4	93.2	4.3	99.3	4.3	92.9	2.4	94.8	3.1
	Mar	94.7	3.5	93.4	3.9	99.7	4.6	93.6	2.9	95.4	3.5
	Apr	95.4	3.4	94.9	3.8	100.0	4.3	93.8	2.7	95.7	3.3
	May	95.6	3.5	95.0	3.7	100.2	4.3	94.0	2.9	95.9	3.4
	Jun	95.8	3.5	95.4	3.6	100.1	4.2	94.2	2.9	96.0	3.4
	Jul	95.9	3.4	95.6	3.7	99.9	3.8	94.4	3.0	96.1	3.3
	Aug	96.0	3.4	95.6	3.7	99.8	3.4	94.6	3.1	96.2	3.2
	Sept	96.1	3.2	95.9	3.5	99.2	2.6	94.7	3.1	96.1	3.0
	Oct	96.1	3.0	96.0	3.4	99.1	2.2	94.8	3.0	96.1	2.8
	Nov	96.2	2.9	95.9	3.4	98.9	1.6	95.2	3.1	96.4	2.7
	Dec	96.6	3.2	96.3	3.7	98.9	1.3	95.8	3.7	96.8	3.0
2018	Jan	97.0	3.1	96.7	3.9	99.3	0.5	96.1	3.8	97.1	2.8
	Feb	97.2	3.2	96.9	4.0	99.6	0.3	96.4	3.8	97.4	2.8
	Mar	97.4	2.8	97.1	4.0	99.8	0.1	96.5	3.1	97.5	2.2
	Apr	98.7	3.4	100.4	5.8	99.9	-0.1	96.7	3.1	97.7	2.1
	May	98.7	3.3	100.5	5.7	100.0	-0.2	96.8	3.0	97.7	2.0
	Jun	98.8	3.1	99.7	4.4	99.9	-0.2	97.5	3.6	98.2	2.4
	Jul	98.8	3.1	99.8	4.4	99.9	-0.1	97.6	3.4	98.3	2.3
	Aug	98.8	3.0	99.8	4.4	99.8	0.0	97.6	3.2	98.3	2.2
	Sept	98.9	2.9	100.0	4.3	99.8	0.6	97.5	2.9	98.2	2.1
	Oct	99.5	3.6	99.9	4.1	99.7	0.7	99.1	4.5	99.3	3.3
	Nov	99.9	3.8	99.9	4.2	99.9	1.0	99.9	4.9	99.9	3.7
	Dec	100.0	3.5	100.0	3.9	100.0	1.1	100.0	4.4	100.0	3.4
2019	Jan	100.3	3.5	100.2	3.6	100.8	1.5	100.3	4.4	100.4	3.4
% Change on last month		0.3		0.2		0.8		0.3		0.4	

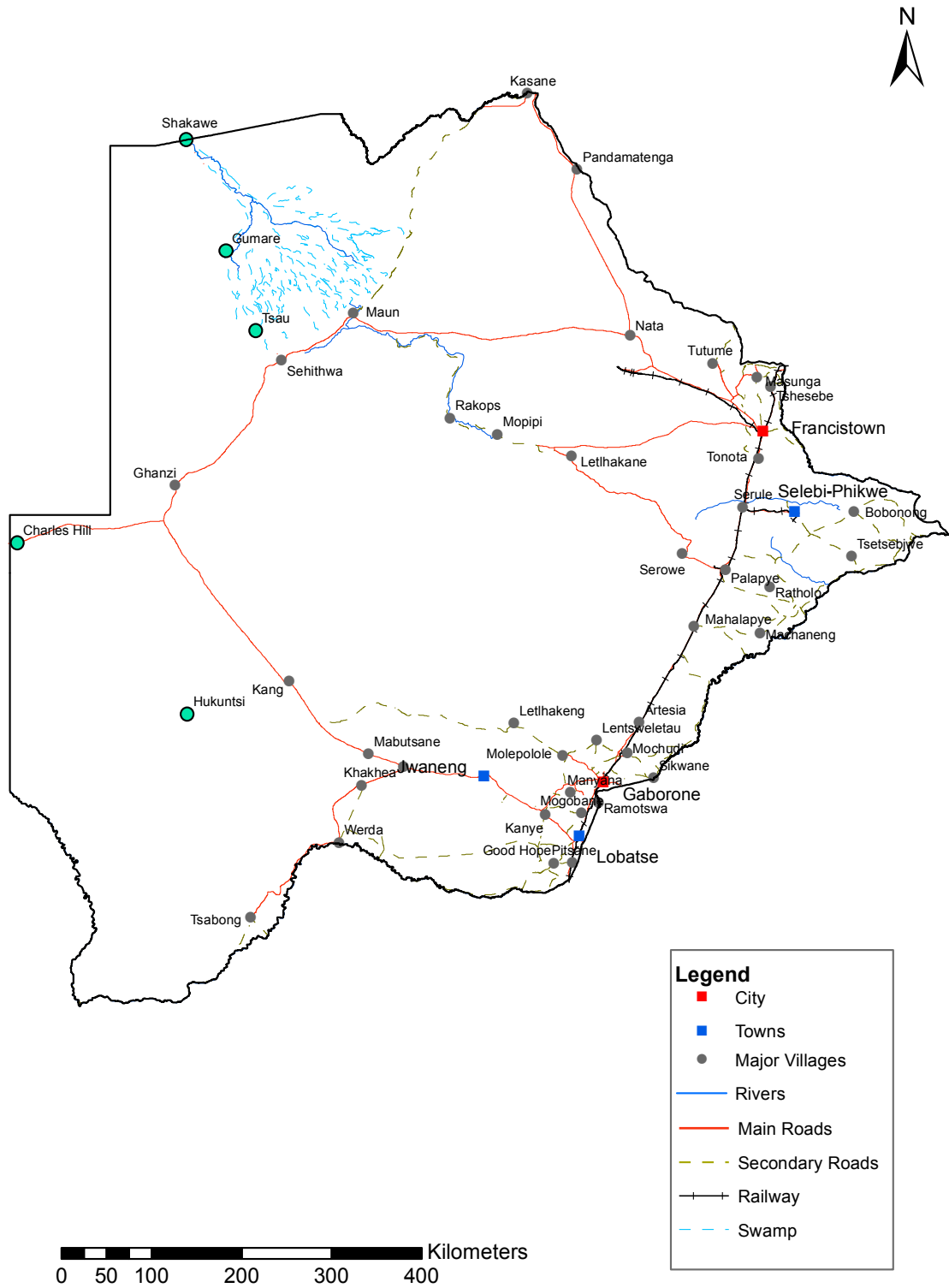
Table 4: Core Inflation Rates by Exclusion and Trimmed Mean

Year	Month	Consumer Price Index (Trimmed Mean) (September 2016 = 100)	Core Monthly Inflation Rate (Trimmed Mean) (percentage)	Consumer Price Index (Excluding Administered Prices) (September 2016 = 100)	Core Monthly Inflation (Excluding Administered Prices) (percentage)
2016					
	Jan	90.3	2.8	93.0	4.0
	Feb	90.5	2.6	93.2	3.7
	Mar	90.7	2.5	93.6	3.7
	Apr	91.2	2.4	94.4	3.9
	May	91.4	2.3	94.5	3.8
	Jun	91.4	2.4	94.7	3.6
	Jul	92.1	2.5	94.9	3.6
	Aug	92.3	2.4	95.1	3.6
	Sept	92.6	2.6	95.4	3.6
	Oct	92.8	2.2	95.6	3.4
	Nov	93.0	2.5	95.9	3.7
	Dec	93.1	2.5	96.0	3.7
2017					
	Jan	93.5	2.7	96.6	3.9
	Feb	93.7	2.9	96.9	3.9
	Mar	94.2	3.1	97.2	3.9
	Apr	94.4	3.1	97.5	3.3
	May	94.5	3.1	97.7	3.4
	Jun	94.8	2.9	97.9	3.3
	Jul	94.9	2.9	98.1	3.3
	Aug	95.0	2.9	98.2	3.3
	Sept	95.1	2.7	98.2	3.0
	Oct	95.2	2.6	98.2	2.8
	Nov	95.4	2.5	98.2	2.4
	Dec	95.8	2.9	98.2	2.3
2018					
	Jan	96.1	2.8	98.7	2.2
	Feb	96.4	2.9	99.0	2.2
	Mar	96.6	2.6	99.2	2.0
	Apr	97.6	3.1	99.4	1.9
	May	97.7	3.0	99.5	1.8
	Jun	98.6	3.2	99.6	1.8
	Jul	98.7	3.1	99.7	1.7
	Aug	98.7	3.0	99.7	1.6
	Sept	98.8	2.9	99.8	1.6
	Oct	99.5	3.7	99.8	1.6
	Nov	99.6	3.8	99.9	1.7
	Dec	100.0	3.6	100.0	1.8
2019					
	Jan	100.4	3.6	100.4	1.8

Table 5: Average Annual Inflation (December 2018 = 100.0)

	Group	Weights	YEAR										
			2008	2009	2010	2011	2012	2013	2014	2015	2016	2017	2018
1	Food & Non-Alcoholic Beverages	13.55	20.2	14.7	3.6	6.9	8.0	5.4	3.0	1.3	2.7	3.4	(0.5)
2	Alcoholic Beverages, Tobacco & Narcotics	4.34	13.2	35.2	7.1	8.4	7.6	10.3	9.0	6.1	2.5	4.5	1.1
3	Clothing and Footwear	5.95	2.0	8.4	8.0	8.9	7.5	6.3	6.0	7.6	6.5	3.2	1.8
4	Housing, Water, Electr. Gas & Other Fuels	17.45	8.1	4.8	6.4	8.4	7.7	4.3	3.9	7.1	6.3	5.4	4.1
5	Furnishing, H/H Equipment & Routine Maintenance	4.85	6.0	11.9	9.4	9.0	7.3	4.9	5.0	6.1	3.0	3.3	2.1
6	Health	3.38	11.3	5.5	2.7	4.5	5.9	5.5	8.3	6.3	3.0	2.4	1.1
7	Transport	23.43	21.2	(8.4)	12.1	13.2	10.8	7.3	1.2	(5.1)	(2.7)	1.6	7.5
8	Communication	6.94	(0.3)	(0.3)	1.2	(3.0)	(1.4)	0.3	0.3	0.3	0.2	0.5	(4.6)
9	Recreation & Culture	2.82	2.3	5.0	6.0	8.3	5.8	4.5	4.2	5.7	3.0	2.2	1.8
10	Education	4.60	3.9	3.9	5.8	10.6	6.4	4.7	7.4	6.4	3.7	4.1	5.5
11	Restaurants & Hotels	3.66	12.7	18.8	9.0	9.3	8.4	7.9	7.6	5.5	4.0	3.7	3.4
12	Miscellaneous Goods & Services	9.01	4.9	3.8	7.0	5.3	2.0	1.2	5.2	7.2	7.5	3.9	6.4
All-Items Index		100.0	12.6	8.2	6.9	8.5	7.5	5.9	4.4	3.1	2.8	3.3	3.2

CPI AREA COVERAGE



Compiled and Prepared by Statistics Botswana, 2016

GLOSSARY

Consumer Price Index (CPI) is an index which measures price changes in goods and services with reference to a base period.

Inflation is a measurement of prices movement of goods and services in a particular country.

Domestic Tradeables refers to the goods and services which a country (Botswana) can export to other countries.

Imported Tradeables represents the goods and services which a country (Botswana) imports from other countries (trading partners).

Non-Tradeables refers to the goods and services which a country cannot either export to or import from other countries.

All –Tradeables refers to the total of **Domestic** and **Imported Tradeables** .

Trimmed Mean Core Inflation- attempts to remove 8 percent (by weight) of the commodity sub-groups price changes at each of the ends of an ordered series of price changes in any given month.

Core inflation by Exclusion is a measure used to remove the volatility inherent in prices that are only adjusted periodically and not always in response to currently prevailing market forces.

APPENDICES

APPENDIX 1

INTRODUCTION

This gives a brief summary on the Rebasing of the Consumer Price Index (CPI) to December 2018.

In order to effectively meet numerous needs of our wider users, Statistics Botswana has rebased the Consumer Price Index from September 2016 to December 2018. The CPI rebasing covers a number of issues, which include the new basket and weights, area coverage as well as methodology.

It should be noted that the index series that has been released earlier to the rebasing exercise had September 2016 as base year and the weights were obtained from the 2009/10 Botswana Core Welfare Indicator Survey (BCWIS) results. The current index has December 2018 as its base and the weights were derived from the 2015/16 Botswana Multi-Topic Household Survey (BMTHS) results.

WHY REBASE THE CPI

CPI rebasing is a process of relating item prices in the CPI basket to the current consumption pattern i.e. to derive CPI weights which represent the new consumption patterns. The accuracy of weights to represent current consumption patterns changes as the length of time increases from the weight reference period. The best international practice is to rebase CPI after every five years.

THE BASKET

The new basket has a total of 400 items which are categorised into 51 sections and 12 groups, while the previous basket had 393 items, but still classified into the same number of sections and groups. The number of basket items has been increased and modified to cater for the changes in the consumption patterns as per 2015/16 Multi-Topic Household Survey results. Each item/product in the basket is representative of all other similar items, hence the weights reflect the relative importance of an item to other items in the entire basket. It is therefore based on the fact that the behaviour of the price of an item will be similar to that of the items it represents.

Statistics Botswana has adopted the Classification of Individual Consumption by Purpose (COICOP) for all items in the new basket. COICOP is an international classification system that categorises consumption goods and services according to their primary purpose. It has benefits of regional and international comparability as well as providing an integrated set of household expenditure and consumption statistics.

Appendix 2 presents a comparison of the old and new basket and weights at group level and the entire basket is presented in Appendix 3.

Appendix 2: Comparison of Group weights for Consumer Price Index between 2016 and 2018 in Botswana

Group	September 2016 Weights	December 2018 Weights
Food & Non-Alcoholic Beverages	16,51	13,55
Alcoholic Beverages & Tobacco	7,83	4,24
Clothing & Footwear	6,27	5,95
Housing, Water, Electricity, Gas & Other Fuels	14,90	17,45
Furnishing, Household Equipment & Routine Maintenance	6,39	4,85
Health	3,62	3,38
Transport	20,65	23,43
Communications	4,27	6,94
Recreation & Culture	2,92	3,82
Education	3,34	4,60
Restaurants & Hotels	2,76	3,66
Miscellaneous Goods & Services	10,55	9,01
All Item Index	100,00	100,00

AREA COVERAGE

Prices collection from retail outlets is conducted every month within the first two weeks of each month. Prices collection covers the towns/cities, urban villages and rural villages.

On geographical coverage, all cities/towns are included in the sample; sampling was done in urban and rural villages within each district using the 2011 Population and Housing Census data; ensuring that where possible within each district an urban and rural village is selected. Proportional to Size sampling technique was used to select urban villages while purposive sampling was used to select rural villages. There were no changes in the number of areas covered. Table A below presents a summary of the areas covered.

Table A: Summary of CPI area coverage

New CPI Area Coverage	
Strata	Number of Areas
Cities/towns	5
Urban Villages	23
Rural Villages	21
Number of areas	49

OUTLETS SELECTION

Listing of outlets within all the selected areas was done and was used to select outlets where price collection was to take place. In selecting outlets, purposive sampling was used based on the number of items the outlet can provide in relation to the CPI Basket.

METHODOLOGY

Statistics Botswana is currently using the Modified Laspeyres method to compute Consumer Price Index (CPI) which is in line with regional and international recommendations. Its main advantage is that it uses chaining and as a result is more amenable to the introduction of new items and substitution of discontinued products.

Appendix 3: New CPI Basket and Weights 2018

Tradeability	Group code	2018 New codes	Name	Cities/Towns	Urban Villages	Rural Villages	National
				0.38	0.41	0.21	1.00
	1		FOOD AND NON- ALCOHOLIC BEVERAGES	8.8645	13.5417	22.0689	13.5545
	1.1		Bread and Cereals	2.3546	4.0501	8.0989	4.2561
IT		1	Rice, 5kg (Tastic)	0.6495	1.1182	1.3906	0.9971
IT		2	Basmati Rice, 1 kg	0.0749	0.1266	-	0.0803
DT		3	Bread, one white loaf, Not sliced	0.0655	0.1019	0.2338	0.1157
IT		4	Biscuits, 200g (Eet-Sum-Mor)	0.0151	0.0215	0.0730	0.0299
DT		5	Fat cake, one	0.0655	0.1019	0.2338	0.1157
DT		6	Brown bread (1 Loaf, not sliced)	0.0655	0.1019	0.2338	0.1157
DT		7	Roll (sold loose)	0.0655	0.1019	0.2338	0.1157
IT		8	Spaghetti, 500g without eggs	0.0908	0.1226	0.1975	0.1262
IT		9	Macaroni 500g (Fatti's & Moni's)	0.0908	0.1226	0.1975	0.1262
DT		10	Maize meal, 5kgs (White Star)	0.5570	1.0527	2.8834	1.2489
DT		11	Sorghum meal, 5kgs	0.2881	0.5554	1.2981	0.6098
DT		12	White bread flour, 5kgs	0.2222	0.3667	0.6914	0.3800
DT		13	Samp, 2.5kg	0.0262	0.0521	0.1752	0.0681
IT		14	Oats 500g	0.0106	0.0135	0.0613	0.0225
IT		15	Corn Flakes, 1kg box (KELLOGGS)	0.0208	0.0280	0.0691	0.0339
IT		16	Instant noodles, any flavor, 73g	0.0469	0.0626	0.1265	0.0701
	1.2		Meat (Fresh, Chilled, Frozen)	1.7254	2.3251	3.5535	2.3552
DT		17	Rump steak per kg	0.1156	0.1537	0.2625	0.1621
DT		18	Beef mince per kg	0.1687	0.2209	0.3795	0.2344
DT		19	Beef, brisket per kg	0.1735	0.2306	0.3937	0.2431
DT		20	Chuck , per kg	0.1735	0.2306	0.3937	0.2431
DT		21	Ox liver per kg	0.0617	0.0854	0.1369	0.0872
DT		22	Beef bones per kg	0.1133	0.1489	0.2554	0.1577
DT		23	Goat meat per kg	0.0634	0.0783	0.1342	0.0844
DT		24	Chicken, frozen per kg	0.1605	0.2164	0.2697	0.2064
DT		25	Chicken Braii Pack 2kg	0.2676	0.3607	0.4495	0.3439
DT		26	Chicken Liver per kg	0.1070	0.1443	0.1798	0.1376
DT		27	Corned Meat, canned, 300g (ECCO)	0.1469	0.2235	0.3125	0.2131
DT		28	Ox Tripe (Mogodu) per kg	0.1172	0.1575	0.2610	0.1639
IT		29	Pork, loin chop per kg	0.0566	0.0744	0.1253	0.0783
	1.3		Fish (Fresh, Chilled, Frozen)	0.1023	0.1883	0.2953	0.1781
IT		30	Frozen hake fillets, 400g (SEA HARVEST)	0.0341	0.0511	0.1016	0.0553
IT		31	Tinned pilchards, 155g (LUCKY STAR)	0.0546	0.1179	0.1553	0.1017
IT		32	Tuna in vegetable oil 170g	0.0135	0.0193	0.0383	0.0211
	1.4		Milk, Cheese and Eggs	0.6525	1.1141	1.3317	0.9842
DT		33	Fresh milk, 500mls, carton or bottle	0.1503	0.2652	0.3410	0.2374
IT		34	Long-life milk, 500mls (ULTRA MEL)	0.2505	0.4420	0.5684	0.3957
IT		35	Powdered milk, 400g fin (NESPRAY)	0.0604	0.1103	0.1316	0.0958
IT		36	Yoghurt 175mls	0.0093	0.0153	0.0126	0.0125
IT		37	Liquid Yoghurt (Yogofun) 250g	0.0040	0.0066	0.0054	0.0054
IT		38	Sliced cheese (single packet)	0.0288	0.0425	0.0350	0.0357
IT		39	Sour milk, INKOMAZI, 500 ml	0.0575	0.0995	0.1326	0.0905
DT		40	Eggs, one dozen, size 2	0.0917	0.1327	0.1051	0.1113

Consumer Price Index- January 2019

Tradeability	Group code	2018 New codes	Name	Cities/Towns	Urban Villages	Rural Villages	National
				0.38	0.41	0.21	1.00
	1.5		Oils and Fats	0.6129	0.8574	1.5922	0.9189
IT		41	Butter 250g- 500g	0.0233	0.0361	0.0307	0.0301
IT		42	Soft margarine (FLORO), 500g Regular	0.0202	0.0339	0.0239	0.0266
IT		43	Margarine 250g - Not `soft' Butter Cup	0.0202	0.0339	0.0239	0.0266
IT		44	Sunflower cooking oil, 750ml bottle	0.4838	0.6631	1.3328	0.7357
IT		45	Olive oil, extra virgin, WKB	0.0547	0.0749	0.1506	0.0831
IT		46	Cooking fat 125g (HOLSUM)	0.0082	0.0112	0.0226	0.0125
IT		47	Peanut Butter, 400g	0.0027	0.0042	0.0076	0.0043
	1.6		Fruits	0.6222	0.8227	0.9986	0.7834
IT		48	Oranges, per kg	0.1154	0.1533	0.1873	0.1460
IT		49	Bananas per kg	0.0649	0.0863	0.1043	0.0820
IT		50	Apples, red, per kg	0.1014	0.1346	0.1622	0.1278
DT		51	Watermelon (Legapu) per kg	0.2020	0.2654	0.3223	0.2532
IT		52	Pineapples per Kg	0.0022	0.0028	0.0034	0.0027
IT		53	Dried raisins, 250g	0.1276	0.1687	0.2049	0.1607
IT		54	Canned, fruits-peaches 410g (Koo)	0.0088	0.0115	0.0141	0.0110
	1.7		Vegetables	0.7744	1.1082	1.5842	1.0812
IT		55	Potatoes per kg	0.1688	0.2370	0.2880	0.2218
DT		56	Rape Leaves per 500g	0.0404	0.0587	0.0985	0.0601
DT		57	Spinach, per 500g	0.0404	0.0587	0.0985	0.0601
IT		58	Frozen Vegetable, 1kg, Mixed	0.1361	0.1792	0.2142	0.1702
DT		59	Cabbage per kg	0.0498	0.0941	0.1654	0.0922
DT		60	Tomatoes per kg	0.1247	0.1755	0.2779	0.1777
IT		61	Carrots per kg	0.0460	0.0616	0.0719	0.0578
IT		62	Onions per kg	0.1245	0.1730	0.2624	0.1733
IT		63	Fresh cucumber	0.0116	0.0168	0.0282	0.0172
IT		64	Fresh green pepper	0.0231	0.0335	0.0563	0.0344
IT		65	Tinned peas, 410g	0.0012	0.0025	0.0017	0.0018
DT		66	Dried beans, 500g	0.0018	0.0042	0.0064	0.0037
IT		67	Baked beans, 410g (KOO)	0.0028	0.0059	0.0039	0.0043
IT		68	Potato Chips (Crisp) 30g pkt	0.0032	0.0075	0.0109	0.0066
	1.8		Sugar, Jam, Honey, Chocolate and Confectionery	0.7182	1.0548	1.9421	1.1132
DT		69	Sugar, white, 2.5 kg (Blue Crystal)	0.5706	0.8299	1.7506	0.9248
IT		70	Apricot jam, smooth, 450g (KOO)	0.0155	0.0230	0.0201	0.0195
IT		71	Chocolate (CADBURY'S DAIRY MILK) 80g	0.0300	0.0429	0.0348	0.0363
DT		72	Chewing gum (CHAPPIES) per one - small	0.0446	0.0711	0.0608	0.0589
IT		73	WILSON'S X.X.X mints	0.0164	0.0276	0.0245	0.0227
IT		74	Ice cream, 2kg (VANILLA)	0.0411	0.0603	0.0513	0.0511
	1.9		Food Not Elsewhere Classified (N.E.C.)	0.3529	0.5356	0.8662	0.5356
IT		75	Tomato sauce, 700mls (ALL GOLD)	0.0531	0.0769	0.1160	0.0761
IT		76	Mayonnaise 750ml, Cross and Blackwell	0.0563	0.0880	0.1370	0.0863
IT		77	Fine Salt, 500g	0.0508	0.0844	0.1480	0.0850
IT		78	Cayenne Pepper 7g,	0.0079	0.0216	0.0132	0.0146
IT		79	Packet soup (KNORR) 60g	0.0468	0.0934	0.1819	0.0943
IT		80	Baking powder, 50g (ROYAL)	0.0411	0.0508	0.0869	0.0547
IT		81	Instant Yeast 10g	0.0411	0.0508	0.0869	0.0547
IT		82	Baby food (CERELAC) 250g	0.0466	0.0527	0.0847	0.0571
DT		83	Magew, Cream Flavour, 500 ml (no.1)	0.0092	0.0171	0.0117	0.0130

Consumer Price Index- January 2019

Tradeability	Group code	2018 New codes	Name	Cities/Towns	Urban Villages	Rural Villages	National
				0.38	0.41	0.21	1.00
	1.100		Coffee, Tea and Cocoa	0.4267	0.6809	1.3684	0.7287
IT		84	Coffee 60g (ACE,KLOOF or FG)	0.1178	0.1597	0.1941	0.1510
IT		85	Coffee, RICOFFY in tin, 250g	0.1178	0.1597	0.1941	0.1510
IT		86	Tea leaves, 125g (FIVE ROSES)	0.0637	0.1205	0.3268	0.1423
IT		87	Tea bags, 100 with tags (FIVE ROSES)	0.0637	0.1205	0.3268	0.1423
IT		88	Rooibos bags, 40 Teabags	0.0637	0.1205	0.3268	0.1423
	1.11		Mineral Waters, Soft Drinks, Fruits & Vegetable Juices	0.5223	0.8045	0.4378	0.6200
DT		89	Mineral water (Still spring water) 500mls	0.0637	0.0434	0.0516	0.0528
DT		90	COCA COLA, 330ml can	0.3525	0.5803	0.2821	0.4309
DT		91	FANTA, 2 liter	0.0220	0.0363	0.0176	0.0269
IT		92	Fruit juice, 1 liter	0.0220	0.0363	0.0176	0.0269
IT		93	Orange squash, 2litre bottle	0.0621	0.1082	0.0688	0.0824
	2		ALCOHOLIC BEVERAGES AND TOBACCO	3.4495	4.5637	5.5049	4.3375
	2.1		Alcoholic Beverages	2.8268	3.8173	4.1651	3.5135
IT		94	Cane Spirit 750mls	0.0031	0.0037	0.0021	0.0031
IT		95	Whiskey, 750mls (BELLS)	0.0052	0.0064	0.0039	0.0054
IT		96	Brandy, 750 mls (MARTELL V.O.)	0.0031	0.0037	0.0021	0.0031
IT		97	Gin, 750mls (GORDON'S DRY GIN)	0.0101	0.0135	0.0105	0.0115
IT		98	Tassenberg 750mls	0.0092	0.0135	0.0090	0.0109
IT		99	Hunters Gold 340 mls bottle	0.0092	0.0135	0.0090	0.0109
IT		100	Wine, 750 mls (AUTUMN HARVEST-CRACKLING)	0.0112	0.0150	0.0117	0.0128
IT		101	JC Leroux 750 mls (White Wine)	0.0112	0.0150	0.0117	0.0128
IT		102	Nederburg Rose 750mls	0.0112	0.0150	0.0117	0.0128
DT		103	Beer, 330 ml can (St.Louis)	0.7879	1.0541	0.8222	0.9040
DT		104	Beer 750mls Bottle (Blacklabel)	0.7879	1.0541	0.8222	0.9040
DT		105	Chibuku, 1 liter carton	0.3898	0.5562	1.6269	0.7180
IT		106	Castle Lite 330 ml Bottle	0.7879	1.0541	0.8222	0.9040
	2.2		Tobacco	0.6226	0.7464	1.3399	0.8241
IT		107	Cigarettes, 20 Peter Stuyvesant Filter	0.2375	0.2783	0.4518	0.2993
IT		108	Cigarettes, Craven A, 20	0.2375	0.2783	0.4518	0.2993
IT		109	Cigarettes,Slim, Vogue	0.1188	0.1392	0.2259	0.1497
IT		110	Tobacco, 50g (Boxer)	0.0287	0.0507	0.2103	0.0759
	3		CLOTHING AND FOOTWEAR	5.9009	5.8934	6.1705	5.9545
	3.1		Garments	2.4082	2.6405	2.8448	2.5951
IT		111	Men's suit, 65 polyester 35 cotton (two buttons), size 3	0.1341	0.1841	0.1953	0.1674
IT		112	Men's trousers, polyester/cotton, size 4	0.3421	0.3532	0.4060	0.3601
IT		113	Men's shirt, polyester/cotton,size 16	0.1061	0.1181	0.1520	0.1207
IT		114	Men's socks (1 Pair)	0.0084	0.0056	0.0068	0.0069
IT		115	Men's brief, Medium size, pack of 3	0.0068	0.0100	0.0122	0.0092
IT		116	Ladies dress, polyester and cotton	0.3326	0.3631	0.4038	0.3601
IT		117	Ladies cardigan, wool/acrylic, size 36	0.0019	0.0062	0.0133	0.0060
IT		118	Ladies blouse, cotton or poly-cotton, size 36	0.0159	0.0307	0.0103	0.0208
IT		119	Ladies brassiere, size 36	0.0728	0.0790	0.0852	0.0779
IT		120	Ladies tights (pantyhose)	0.0162	0.0208	0.0171	0.0183
IT		121	Ladies briefs, poly-cotton	0.0734	0.0791	0.0858	0.0783
IT		122	Dress material, 100% cotton, per meter (German printing)	0.0799	0.0523	0.0513	0.0626

Consumer Price Index- January 2019

Tradeability	Group code	2018 New codes	Name	Cities/Towns	Urban Villages	Rural Villages	National
				0.38	0.41	0.21	1.00
IT		123	Head Scarf, Medium size, plain	0.0230	0.0221	0.0187	0.0217
IT		124	Boys school shorts, size 6	0.2984	0.3175	0.3485	0.3167
IT		125	Boys school shirt, size 6	0.2913	0.3191	0.3498	0.3150
IT		126	Girls' dress, cotton or poly-cotton, size 28	0.3010	0.3311	0.3485	0.3233
IT		127	Baby's Romper, 6-12 months	0.2881	0.3263	0.3370	0.3140
IT		128	Disposable Nappy, child 5-7kg	0.0164	0.0221	0.0030	0.0159
	3.2		Other Articles of Clothing & Clothing Accessories	0.6682	0.7291	0.7808	0.7168
IT		129	Tie, polyester/cotton	0.2899	0.3169	0.3396	0.3114
IT		130	Leather belt, pure leather medium	0.2899	0.3169	0.3396	0.3114
IT		131	Sewing thread, standard reel	0.0442	0.0476	0.0508	0.0470
IT		132	Small Pack of Needles (10)	0.0442	0.0476	0.0508	0.0470
	3.3		Cleaning, Repair and Hire of Clothing	0.6133	0.5951	0.6567	0.6150
NT		133	Dry cleaning, men's two-piece suit	0.1580	0.1503	0.1702	0.1574
NT		134	Dry cleaning, ladies' two-piece suit	0.1296	0.1190	0.1366	0.1267
NT		135	Dry cleaning, men's trouser	0.2573	0.2636	0.2903	0.2668
NT		136	Dry cleaning, ladies' skirt	0.0435	0.0360	0.0431	0.0403
NT		137	Alteration of trousers at the bottom	0.0124	0.0131	0.0083	0.0118
NT		138	Fitting of new zip fastener	0.0124	0.0131	0.0083	0.0118
	3.4		Footwear	2.2112	1.9286	1.8882	2.0277
IT		139	Men's shoes, size 7, leather uppers, rubber sole	0.6079	0.4917	0.4830	0.5341
IT		140	Men's sandals, size 7, leather, rubber sole	0.1520	0.1229	0.1208	0.1335
IT		141	Ladies sandals, size 6, rubber sole	0.2417	0.2467	0.2436	0.2442
IT		142	Ladies high heeled shoes, size 6	0.3625	0.3701	0.3653	0.3662
IT		143	Boys leather school shoes, size 2	0.2713	0.2251	0.2164	0.2409
IT		144	Girls leather school shoes, size 2	0.2713	0.2251	0.2164	0.2409
NT		145	Repair of men's; shoes, ordinary half sole & heel	0.1522	0.1234	0.1214	0.1340
NT		146	Repair of ladies; shoes, ordinary half sole & heel	0.1522	0.1234	0.1214	0.1340
	4		HOUSING, WATER, ELECTRICITY, GAS AND OTHER FUELS	19.3414	18.4103	12.1648	17.4516
	4.1		Actual Rentals Paid by Tenants	11.5943	6.8442	2.6901	7.7786
NT		147	Monthly rent BHC House Type LC48	0.6317	0.1280	0.0057	0.2940
NT		148	Monthly rent BHC Type 2 "Improved"	0.9236	0.0640	0.0057	0.3789
NT		149	Private rent, low-cost 1 room house	4.2778	2.6737	1.9473	3.1315
NT		150	Private rent, 2 1/2 house (servant quarter)	3.2632	1.9893	0.5344	2.1682
NT		151	Private rent, 2 bedroom house	1.6892	1.3368	0.1157	1.2142
NT		152	Private rent, 3 bedroom house with single garage	0.8088	0.6524	0.0812	0.5918
	4.3		Materials for Maintenance and Repair of the Dwelling	1.9162	5.2377	4.5405	3.8270
DT		153	Stock brick, one	0.1551	0.3257	0.3001	0.2554
IT		154	Roof tiles, HARVEY TILE, single sheet	0.3638	1.5007	0.5536	0.8689
IT		155	Corrugated iron roofing/linear meter, Standard size 3m	0.1885	0.4040	0.3935	0.3198
DT		156	Cement, 50kg Bag	0.4122	1.6179	1.7952	1.1963
IT		157	PVA water paint White, 5 liters, Dulux	0.1430	0.2328	0.2483	0.2019
IT		158	Window pane (30 cm X 30 cm)	0.1541	0.3302	0.2769	0.2520
IT		159	Door, interior, wooden, 8.13 x 203.2 x 11.5cms, Hollow core	0.1527	0.2314	0.3299	0.2222
IT		160	Lever lock	0.3468	0.5950	0.6430	0.5106

Consumer Price Index- January 2019

Tradeability	Group code	2018 New codes	Name	Cities/Towns	Urban Villages	Rural Villages	National
				0.38	0.41	0.21	1.00
	4.4		Water Supply and Miscellaneous Services Relating to the Dwelling	1.9996	2.0967	1.6063	1.9567
NT		161	Water: 10kls per month	1.1868	1.2574	0.9620	1.1684
NT		162	Water: 20kls per month	0.7912	0.8382	0.6413	0.7789
NT		163	Cost of security monitoring system installation with 1 sensor & monthly payments	0.0216	0.0011	0.0030	0.0093
	4.5		Electricity, Gas and Other Fuels	3.8313	4.2317	3.3279	3.8893
NT		164	Electricity, 100kwh per month	2.1732	2.3167	1.7486	2.1426
NT		165	Electricity, 500kwh per month	1.4488	1.5445	1.1657	1.4284
IT		166	Gas, 19kgs (ex-deposit)	0.1012	0.2496	0.2828	0.2001
IT		167	Paraffin, per liter	0.0611	0.0629	0.0698	0.0637
IT		168	Charcoal, 5kgs	0.0272	0.0104	0.0079	0.0163
DT		169	Firewood, 5kg	0.0199	0.0476	0.0530	0.0382
	5		FURNISHING, HOUSEHOLD EQUIPMENT AND ROUTINE MAINTENANCE OF THE HOUSE	5.4788	3.9268	5.5221	4.8529
	5.1		Furniture and Furnishing	1.5862	1.1584	1.2942	1.3498
IT		170	Double bed, with mattress, (RESTONIC/SEALY POSTUREPEDIC)	0.6476	0.5358	0.6793	0.6085
IT		171	Lounge suite 2 2-seater + 2 1-seater	0.5281	0.2710	0.2248	0.3591
IT		172	Plastic Garden Chair	0.1558	0.0539	0.0287	0.0874
IT		173	Wardrobe	0.0836	0.1367	0.1717	0.1239
IT		174	Foam mattress/single bed/190 x 90 x 15cm	0.1711	0.1610	0.1897	0.1709
	5.2		Carpets and Other Floor Coverings	0.2780	0.2313	0.3361	0.2711
IT		175	Carpet 220 x 150' (ordinary floral)-loose carpets	0.0928	0.0781	0.1144	0.0913
IT		176	Porcelain Floor Tiles Box	0.0926	0.0765	0.1063	0.0889
IT		177	Ceramic Floor Tiles Box	0.0926	0.0766	0.1154	0.0909
	5.3		Household Textiles	0.3310	0.1923	0.4100	0.2909
IT		178	Blanket, woolen, 150cms x 200cms	0.0831	0.0498	0.1532	0.0842
IT		179	Duvet Cover Set (3 piece)	0.0606	0.0373	0.1149	0.0625
IT		180	Bed sheets, cotton, for double bed (fitted/Flat)	0.0652	0.0394	0.0399	0.0493
IT		181	Bath towel	0.0320	0.0097	0.0144	0.0192
IT		182	Pillow, one standard	0.0078	0.0050	0.0048	0.0060
IT		183	Curtains, Standard size(Ready made)	0.0822	0.0512	0.0827	0.0696
	5.4		Household Appliances	0.7891	0.6046	0.8002	0.7160
IT		184	Electric refrigerator, 250-275 liters	0.2950	0.2777	0.2912	0.2871
IT		185	Washing machine (top loader) (8-13kg)	0.0145	0.0093	0.0076	0.0109
IT		186	Electric cooker (4 plates with oven)	0.0461	0.0388	0.0073	0.0349
IT		187	Gas stove, 4 burners, with oven, no grill	0.1076	0.0904	0.1710	0.1139
IT		188	MICRO-WAVE, 25 - 30 liters	0.0326	0.0165	0.0203	0.0234
IT		189	Pedestal fan	0.0644	0.0324	0.0592	0.0502
IT		190	Electric heater, two bar, 1kw (1000w)	0.0534	0.0382	0.0378	0.0439
IT		191	Electric iron, steam	0.0777	0.0326	0.0813	0.0600
IT		192	Electric kettle 1.5-2 liter, plastic one	0.0978	0.0687	0.1244	0.0915
	5.5		Glassware, Tableware and Household Utensils	0.2436	0.2212	0.2423	0.2341
IT		193	Paraffin lamp (Base Lamp)	0.0119	0.0067	0.0049	0.0083
IT		194	Paraffin Lamp Glass	0.0119	0.0067	0.0049	0.0083
IT		195	Mug Cup	0.0318	0.0560	0.0685	0.0494
IT		196	Kettle, Not electric	0.0066	0.0034	0.0033	0.0046
IT		197	Dinner plate, plain pattern, china	0.0681	0.0648	0.0460	0.0621

Consumer Price Index- January 2019

Tradeability	Group code	2018 New codes	Name	Cities/Towns	Urban Villages	Rural Villages	National
				0.38	0.41	0.21	1.00
IT		198	Can opener, steel	0.0067	0.0035	0.0041	0.0049
IT		199	Teaspoon, stainless steel, set of six	0.0135	0.0070	0.0082	0.0097
IT		200	Chopping knife	0.0135	0.0070	0.0082	0.0097
IT		201	Cooking pot, 3 legs+lid, Size3	0.0318	0.0184	0.0263	0.0252
IT		202	Saucepan, aluminium, 225 diam.	0.0068	0.0065	0.0121	0.0078
IT		203	Standard ironing board	0.0133	0.0138	0.0132	0.0135
IT		204	Plastic pail/bucket, 20 - 30 liters	0.0276	0.0275	0.0426	0.0307
	5.6		Small Tools, Miscellaneous Accessories	0.0374	0.0459	0.0335	0.0400
IT		205	Wheelbarrow concrete one	0.0012	0.0088	0.0029	0.0046
IT		206	Spade, flat, all steel	0.0010	0.0075	0.0025	0.0040
IT		207	Paint brush, standard size	0.0069	0.0069	0.0106	0.0077
IT		208	Hose pipe, standard one, specify size	0.0012	0.0088	0.0029	0.0046
IT		209	Light bulb, 11w,Energy Saver	0.0272	0.0139	0.0146	0.0191
	5.7		Goods and Services for Routine Household Maintenance	2.2135	1.4732	2.4059	1.9510
IT		210	Household soap, 250g (sunlight)	0.0452	0.0552	0.1312	0.0674
IT		211	Washing powder, 2kg (sunlight)	0.1356	0.1655	0.3935	0.2021
IT		212	Sta-Soft 2 litres	0.1795	0.1091	0.0443	0.1223
IT		213	Dishwashing liquid, 750ml (SUNLIGHT)	0.0452	0.0552	0.1312	0.0674
IT		214	Bleach, 750ml (JIK)	0.0430	0.0270	0.0391	0.0356
IT		215	Floor polish, 350ml tin, white (COBRA)	0.0221	0.0474	0.0227	0.0326
IT		216	Shoe polish, 50ml	0.0335	0.0349	0.0686	0.0414
IT		217	Lavatory cleaner, 500g (JEYES FLUID)	0.1004	0.0629	0.0911	0.0831
IT		218	Scouring powder, 500g (e.g. VIM 99)	0.1004	0.0629	0.0911	0.0831
IT		219	Insecticide, aerosol, size 300g (DOOM)	0.0430	0.0270	0.0391	0.0356
IT		220	Candles, six, white	0.0165	0.0325	0.1122	0.0432
IT		221	Broom with handle, soft/nylon	0.2627	0.0036	0.2683	0.1579
IT		222	Matches, packet of 10 boxes	0.0169	0.0154	0.0555	0.0244
DT		223	Battery, 1.5 volts (EVER READY R20PP)	0.0169	0.0154	0.0555	0.0244
IT		224	Dish cloth, standard size	0.0464	0.0489	0.0628	0.0508
IT		225	Air freshener (Haze) 100 mls	0.0250	0.0263	0.0338	0.0274
NT		226	Domestic servants' monthly wage	1.0811	0.6841	0.7660	0.8524
	6		HEALTH	4.4847	2.6927	2.7357	3.3837
	6.1		Medical Products, Appliances and Equipment	1.7082	0.6621	0.2732	0.9785
IT		227	PARACETAMOL/ PANADO syrup, 100ml	0.2477	0.0536	0.0301	0.1225
IT		228	Cough syrup, 100ml BORSTOL	0.1586	0.0767	0.0315	0.0984
IT		229	Milk of MAGNESIA, 100 ml	0.1490	0.0584	0.0306	0.0870
IT		230	Painkillers, two COMPRAL	0.1479	0.0964	0.0299	0.1020
IT		231	20 Doxycycline antibiotic tablets	0.4984	0.1649	0.0776	0.2734
IT		232	Contraceptive pills (NORDETT) pkt of 28	0.0003	0.0009	0.0003	0.0005
IT		233	Condoms pkt 3 (Moods)	0.2264	0.1066	0.0425	0.1387
IT		234	Adhesive plasters - per one	0.0545	0.0122	0.0108	0.0280
IT		235	Cost of Spectacles	0.2254	0.0925	0.0200	0.1278
	6.2		Out-Patient Services	1.3832	0.8807	0.2199	0.9330
NT		236	Consultation with private doctor	0.2067	0.1424	0.0298	0.1432
NT		237	Consultation with Government doctor	0.1938	0.1899	0.0804	0.1683
NT		238	Consultation with Optician	0.1230	0.0538	0.0102	0.0709
NT		239	Consultation with Dentist	0.1008	0.1340	0.0267	0.0988
NT		240	Consultation: gynecologist	0.1416	0.0475	0.0099	0.0754

Consumer Price Index- January 2019

Tradeability	Group code	2018 New codes	Name	Cities/Towns	Urban Villages	Rural Villages	National
				0.38	0.41	0.21	1.00
NT		241	Consultation: pediatrician	0.2832	0.0949	0.0199	0.1508
NT		242	Dentist: Extraction of a molar without complications.	0.1841	0.0804	0.0160	0.1063
NT		243	Filling of 1 (one) Molar tooth	0.1227	0.0536	0.0107	0.0709
NT		244	Consultation with traditional doctor	0.0085	0.0067	0.0041	0.0068
NT		245	X-ray taking -private clinics/hospital (Chest)	0.0189	0.0776	0.0122	0.0415
	6.3		Hospital Services	1.3933	1.1499	2.2426	1.4722
NT		246	Rate to stay in a private hospital for 24 hour in a general ward (bed only)	0.6270	0.5174	1.0614	0.6735
NT		247	Rate to stay in a public hospital for 24 hour in a private ward (bed only)	0.7663	0.6324	1.1812	0.7987
	7		TRANSPORT	21.7552	24.5718	24.2559	23.4335
	7.1		Purchase of Vehicles	4.8756	6.4540	5.9299	5.7431
IT		248	Toyota Hilux 2.0 pick-up AC (Colour White)	1.6248	2.1607	0.8713	1.6856
IT		249	Toyota Corolla 1.30 ESTEEM (Colour White)	1.0832	1.4404	0.7215	1.1533
IT		250	Isuzu 2.5 litre Base pick-up (Without AC) (Colour White)	0.5416	0.7202	0.4083	0.5867
IT		251	Second Hand Car (Toyota Corolla 1.5)	0.4972	0.5631	3.1316	1.0780
IT		252	Nissan bakkie, 2 liter (Colour White)	0.5416	0.7202	0.6398	0.6353
IT		253	VW Polo 1.0 liter TSI (Colour White)	0.5416	0.7202	0.1103	0.5240
IT		254	Men's bicycle	0.0456	0.1292	0.0473	0.0801
	7.2		Operation of Personal Transport Equipment	11.6349	12.7263	13.9271	12.5634
IT		255	195 R14 C radial tyre (DUNLOP/GOOD-YEAR)	0.2649	0.5959	0.1118	0.3681
DT		256	Car battery, 622	0.1674	0.2042	0.2476	0.1993
IT		257	Spark plug - NGK	0.2901	0.3701	0.0668	0.2759
IT		258	Wiper blade, two (Set of wipers) - Toyota Corolla 1.3	0.0095	0.0260	0.0492	0.0246
IT		259	Bicycle tyre	0.0032	0.0087	0.0164	0.0082
IT		260	Windscreen for Toyota Corolla 1.4	0.1732	0.2194	0.4557	0.2515
IT		261	Petrol per liter (95)	6.1411	6.2651	6.4740	6.2618
IT		262	Diesel, per liter (50ppm)	3.1965	3.3735	5.2847	3.7079
IT		263	Engine oil (Petrol), 500mls	0.0240	0.1237	0.2286	0.1078
IT		264	Engine oil, 500ml (Diesel Engine)	0.0160	0.0824	0.1696	0.0755
NT		265	Labour charge per hour - car (Toyota Corolla) repairs	0.5005	0.6061	0.1345	0.4668
NT		266	Replacement of brake pads, Labour only car	0.2493	0.2020	0.1914	0.2178
NT		267	Full Car wash (Motor Car)	0.2518	0.2020	0.1914	0.2187
NT		268	Tyre Repair (Puncture)	0.3170	0.3839	0.1091	0.3006
NT		269	Driving lesson per month	0.0214	0.0318	0.1672	0.0563
NT		270	Road worthiness test	0.0090	0.0316	0.0290	0.0224
	7.3		Transport Services	5.2448	5.3915	4.3989	5.1270
NT		271	Bus fare, single, Gaborone-Mochudi	0.5722	0.6899	0.9773	0.7055
DT		272	Minibus fare, Gaborone-Johannesburg	0.6547	0.5492	0.7459	0.6307
NT		273	Taxi fare (Not "special")	1.0568	0.6807	0.5405	0.7944
NT		274	Bus fare, single, Gaborone-Francistown	0.2287	0.8987	0.9420	0.6528
NT		275	Minibus fare, within cities/towns/villages	1.0988	0.8531	0.6930	0.9129
NT		276	Car Rental	0.2215	0.0561	0.1316	0.1349
NT		277	Call Cab (Main mall to Phase 4)	0.2194	1.0419	0.0303	0.5162
NT		278	Railway Passengers Fare	0.0850	0.0887	0.0966	0.0889

Consumer Price Index- January 2019

Tradeability	Group code	2018 New codes	Name	Cities/Towns	Urban Villages	Rural Villages	National
				0.38	0.41	0.21	1.00
NT		279	Air fare, economy single, Gaborone-Maun	0.2121	0.2133	0.0837	0.1856
DT		280	Air fare, economy single, Gaborone-Johannesburg	0.6540	0.1600	0.0790	0.3310
DT		281	Air fare, economy single, Gaborone-London(UK)	0.2416	0.1600	0.0790	0.1740
	8		COMMUNICATION	6.7371	7.5047	6.2113	6.9407
	8.1		Postal Services	0.2041	0.2537	0.1475	0.2125
NT		282	Local Standard Letter tariff rate	0.0116	0.0161	0.0089	0.0129
NT		283	Air Parcel to Europe (0.5 KG)	0.0077	0.0107	0.0059	0.0086
NT		284	Rental of Post Office box	0.1415	0.1805	0.1027	0.1493
NT		285	Standard letter (weight/size 120x235mm), Air.	0.0193	0.0269	0.0148	0.0214
NT		286	Freight/Courier cost of 0.5kg parcel, Gaborone to F/town	0.0239	0.0194	0.0153	0.0203
	8.2		Telephone and Telefax Equipment	1.2797	1.1592	0.8019	1.1299
IT		287	Purchase of a cell phone hand set-Nokia 105 (Open)	0.4456	0.4526	0.3000	0.4178
IT		288	Purchase of a Smart phone hand set (Samsung / Huawei etc)	0.3950	0.3125	0.2513	0.3310
IT		289	Tablet PC	0.3386	0.2679	0.2154	0.2838
IT		290	Cellphone Charger (Nokia)	0.1004	0.1262	0.0352	0.0973
	8.3		Telephone and Telefax Services	5.2533	6.0919	5.2619	5.5983
NT		291	Telephone Installation	0.0029	0.0025	0.0022	0.0026
NT		292	Telephone Charges/rate between zone (per second charge)	0.0043	0.0038	0.0034	0.0039
NT		293	Telephone Charges/rate within zone (per second charge)	0.0043	0.0038	0.0034	0.0039
NT		294	Telephone rate international (per second)	0.0043	0.0038	0.0034	0.0039
NT		295	Telephone charges/rate to mobile (All Mobles)	0.0057	0.0051	0.0045	0.0052
NT		296	Mascom charges/rate to all network (peak hour per minute charge)	0.6531	0.7583	0.6549	0.6965
NT		297	Mascom charges/rate to all network (off/off-off peak hour per minute charge)	0.5225	0.6066	0.5239	0.5572
NT		298	Orange charges/rate to all network (peak hour per minute charge)	0.6531	0.7583	0.6549	0.6965
NT		299	Orange charges/rate to all network (off/off-off peak hour per minute charge)	0.5225	0.6066	0.5239	0.5572
NT		300	Bemobile charges/rate to all network (peak hour per minute charge)	0.6531	0.7583	0.6549	0.6965
NT		301	Bemobile charges/rate to all network (off/off-off peak hour per minute charge)	0.5225	0.6066	0.5239	0.5572
NT		302	Mobile Charge International Charge (Orange+Mascom+Bemobile)	0.5225	0.6066	0.5239	0.5572
NT		303	Prepaid Phone Card - Short Message Service (SMS)	0.3919	0.4550	0.3930	0.4179
NT		304	Internet Café Fee per hour	0.0029	0.0025	0.0022	0.0026
NT		305	Mobile data Pass (1GB; 1 month)	0.7837	0.9100	0.7859	0.8358
NT		306	Internet connection fee to Home computers	0.0043	0.0038	0.0034	0.0039
	9		RECREATION AND CULTURE	3.2599	2.7885	2.0828	2.8195
	9.1		Audio-Visual, Photographic and Information Processing Equipment	2.3983	2.0883	1.5797	2.0994
IT		307	Radio (standard one)	0.1706	0.1315	0.1141	0.1427
IT		308	32 Inches LCD Television	0.5240	0.4334	0.2249	0.4241
IT		309	Laptop Personal Computer	0.5444	0.3482	0.4003	0.4338
IT		310	USB flash drive - 8 GB	0.0665	0.0665	0.0424	0.0614

Consumer Price Index- January 2019

Tradeability	Group code	2018 New codes	Name	Cities/Towns	Urban Villages	Rural Villages	National
				0.38	0.41	0.21	1.00
NT		311	Digital Prints	0.0654	0.0687	0.0435	0.0621
IT		312	Satellite Dish	0.0655	0.0542	0.0653	0.0608
IT		313	TV Decoder, standard (e.g Multi-choice decoder)	0.1300	0.1205	0.1077	0.1215
IT		314	Digital Camera, small one	0.3275	0.3776	0.2520	0.3321
IT		315	Blank CD	0.0652	0.0740	0.0430	0.0641
IT		316	CD Popular music	0.0343	0.0094	0.0333	0.0239
IT		317	DVD, popular music	0.1519	0.1390	0.1070	0.1372
IT		318	DVD Player-Panasonic	0.0671	0.0784	0.0518	0.0685
IT		319	Purchase of home Printer, LaserJet	0.0651	0.0650	0.0326	0.0582
IT		320	Scientific calculator, sharp	0.0141	0.0136	0.0049	0.0120
NT		321	Phone repair, replacement of screen for Smart phone (Samsung/ Huawei)	0.1067	0.1082	0.0571	0.0969
	9.2		Other Recreational Items and Equipment, Gardens and Pets	0.3069	0.3095	0.2531	0.2966
IT		322	Tennis ball	0.0017	0.0023	0.0017	0.0020
IT		323	Football, Standard Mitre	0.0671	0.0699	0.0449	0.0636
IT		324	Soccer boot, size 7-10	0.0727	0.0717	0.0544	0.0684
IT		325	Tennis Racquet (Beginner)	0.0395	0.0370	0.0315	0.0368
IT		326	Tinned pet food, 400g (ECCO/HUSKY)	0.0532	0.0592	0.0710	0.0594
NT		327	Veterinary charges (Injection- rabies)	0.0727	0.0693	0.0497	0.0664
	9.3		Recreational and Cultural Services	0.4407	0.2584	0.1929	0.3140
NT		328	Admission to Premier football match, uncovered stands	0.0109	0.0015	0.0083	0.0065
NT		329	Gym fee per month	0.0332	0.0407	0.0220	0.0339
NT		330	Cinema admission, stalls, evening show	0.0095	0.0007	0.0123	0.0065
DT		331	Monthly subscription to TV (Multichoice sub)	0.3871	0.2155	0.1502	0.2671
	9.4		Newspapers, Books and Stationary	0.1140	0.1323	0.0571	0.1095
IT		332	The BIBLE (GOOD NEWS)	0.0032	0.0397	0.0046	0.0184
IT		333	Dictionary (Oxford)	0.0047	0.0596	0.0069	0.0276
NT		334	Botswana Guardian, weekend edition	0.0103	0.0038	0.0056	0.0067
NT		335	BOTSWANA SUNDAY STANDARD	0.0103	0.0038	0.0056	0.0067
NT		336	Price of local daily Newspaper - Mmegi	0.0103	0.0038	0.0056	0.0067
NT		337	The Voice	0.0062	0.0023	0.0034	0.0040
NT		338	Kutlwano	0.0041	0.0015	0.0023	0.0027
IT		339	Exercise book, 72 pages	0.0027	0.0053	0.0052	0.0043
IT		340	Pencil (HB), without rubber	0.0175	0.0012	0.0017	0.0075
DT		341	Ballpoint pen, BIC orange fine point	0.0129	0.0014	0.0025	0.0060
DT		342	Envelopes/white/postcard-size/pkt of 20	0.0001	0.0016	0.0018	0.0011
IT		343	Sharpener	0.0118	0.0018	0.0009	0.0054
IT		344	Paper glue	0.0039	0.0062	0.0108	0.0063
IT		345	Plastic ruler	0.0161	0.0005	0.0000	0.0063
	10		EDUCATION	6.9034	3.5338	2.4827	4.5952
	10.1		Pre-Primary and Primary Education	2.6326	1.5851	1.1522	1.8927
NT		346	Tuition/sport/feeding/PTA 1 child public schools	0.1146	0.0939	0.0874	0.1004
NT		347	Pre-primary school fees per Term (reception)	1.2432	0.7125	0.4902	0.8677
NT		348	Private Primary school fees per Term	1.2082	0.7138	0.4910	0.8551
DT		349	Primary school Uniform (Dress)	0.0665	0.0649	0.0835	0.0694

Consumer Price Index- January 2019

Tradeability	Group code	2018 New codes	Name	Cities/Towns	Urban Villages	Rural Villages	National
				0.38	0.41	0.21	1.00
	10.2		Secondary and Tertiary Education	4.2707	1.9487	1.3306	2.7024
DT		350	Private Secondary School annual fees excluding board	2.1068	0.8297	0.5829	1.2638
NT		351	School fees (Senior Sec.) public school	0.6535	0.3319	0.2332	0.4335
NT		352	Junior Secondary School fees (public)	0.9802	0.4978	0.3497	0.6503
DT		353	SECONDARY school uniform (Dress)	0.0665	0.0649	0.0835	0.0694
DT		354	College and university fees (BA Social Science)	0.4637	0.2246	0.0812	0.2854
	11		RESTAURANTS AND HOTELS	4.3488	3.5097	2.7149	3.6619
	11.1		Restaurants, Cafés and the Like	3.6220	2.7171	2.5196	3.0199
NT		355	Meat and Chips	0.8005	0.4254	0.3805	0.5587
NT		356	Cooked maize meal and meat to take away	0.5942	0.4389	0.4123	0.4924
NT		357	Cold beer in a Restaurant (St Lious 330ml)	0.2310	0.2808	0.2622	0.2580
NT		358	Purchase of soft drink in a restaurant, Fizzy,330ml	0.9902	1.2033	1.1239	1.1055
NT		359	Fried chicken and chips from a take-away	0.8005	0.2483	0.2282	0.4542
NT		360	Purchase of double tot (bells)	0.2056	0.1203	0.1124	0.1511
	11.2		Accommodation Services	0.7268	0.7926	0.1952	0.6420
NT		361	Top hotel (, single, 1 Night, no b/fast	0.1817	0.1982	0.0643	0.1637
NT		362	Average hotel, single, 1 night, no b/fast	0.2544	0.2774	0.0667	0.2243
NT		363	Lodge single, 1 Night excluding breakfast	0.2907	0.3171	0.0643	0.2539
	12		MISCELLANEOUS GOODS AND SERVICES	9.4759	9.0627	8.0855	9.0145
	12.1		Personal Care	2.1773	2.3420	2.5938	2.3323
NT		364	Hairdressing, ladies' "Blow-out" (dark & lovely)	0.1347	0.1231	0.1180	0.1265
NT		365	Ladies' haircut	0.1347	0.1231	0.1180	0.1265
NT		366	Men's haircut	0.1797	0.1641	0.1573	0.1686
DT		367	Bath soap, 175g bar (dettol/savlon)	0.3752	0.3748	0.4348	0.3876
IT		368	Toothpaste, 100ml (COLGATE) Original	0.0743	0.0944	0.1578	0.1001
IT		369	Shampoo 350 ml (Palmolive)	0.0938	0.0937	0.1087	0.0969
IT		370	Body Lotion (DAWN/MOUSSON) 400 ml	0.2297	0.2315	0.3193	0.2492
IT		371	Petroleum jelly, 50ml (VASELINE BLUE SEAL)	0.1148	0.1157	0.1596	0.1246
IT		372	Razor blade, pkt 5 disposables (Minora)	0.0005	0.0006	0.0005	0.0006
IT		373	Sanitary Pads pkt of 10	0.3946	0.5467	0.4751	0.4737
IT		374	Lip balm (lip ice etc)	0.0574	0.0579	0.0798	0.0623
IT		375	Roll-on Antiperspirant, SHIELD, 50 ml	0.1723	0.1736	0.2395	0.1869
IT		376	Tooth Brush, Standard size (Colgate)	0.0318	0.0404	0.0676	0.0429
IT		377	Shaver (Non-electric), Gillette, standard size	0.0033	0.0040	0.0076	0.0045
DT		378	Toilet roll, single-ply, one	0.1805	0.1984	0.1503	0.1815
	12.2		Personal Effects N.E.C.	0.1530	0.1849	0.3881	0.2155
IT		379	Wrist watch	0.1370	0.1613	0.3419	0.1900
IT		380	Suitcase, with trolley system	0.0064	0.0094	0.0185	0.0102
IT		381	Ladies Hand Bag	0.0096	0.0142	0.0277	0.0153
	12.3		Social Protection	0.1655	0.1335	0.0787	0.1342
NT		382	Playschool fees Creche, Kindergarten etc, per Term	0.1655	0.1335	0.0787	0.1342

Consumer Price Index- January 2019

Tradeability	Group code	2018 New codes	Name	Cities/Towns	Urban Villages	Rural Villages	National
				0.38	0.41	0.21	1.00
	12.4		Insurance	3.9858	3.6487	2.9241	3.6247
NT		383	Employee contribution to medical aid, Standard Benefit, 1, salary(600+)	1.5901	1.5865	1.4049	1.5497
NT		384	Employee contribution to medical aid, High Benefit, 1, salary(5000-8000)	1.4861	1.1489	1.0173	1.2496
NT		385	Fully comp. insurance - Toyota Corolla 1.3	0.8743	0.8817	0.4657	0.7914
NT		386	Ann. premium-house contents insurance (P25000)	0.0353	0.0316	0.0362	0.0340
	12.5		Financial Services	1.1899	1.2715	0.5707	1.0931
NT		387	Monthly repayment on P100,000 loan-index linked	0.4847	0.6875	0.2228	0.5126
NT		388	Levy + loan (P3500) interest on SHHA plot	0.0638	0.0665	0.0426	0.0604
NT		389	Bank Charges/Financial Charges	0.6415	0.5175	0.3053	0.5201
	12.6		Taxes, Licences, Fees	1.8043	1.4821	1.5300	1.6148
NT		390	Driver's License charge	0.0303	0.0245	0.0144	0.0246
NT		391	Annual road tax - Hilux 2.0 pick-up	0.1708	0.1378	0.0813	0.1385
NT		392	Annual road tax-Toyota Corolla 1.4	0.1398	0.1128	0.0665	0.1133
NT		393	Fee for the issue of a passport	0.0584	0.0525	0.0464	0.0535
NT		394	Council rates to house + plot valued at P200,000	0.0525	0.1478	0.0524	0.0915
NT		395	Photocopy (A4)	0.0118	0.0174	0.0222	0.0163
NT		396	Car advert (20 words) Botswana Guardian	0.0204	0.0208	0.0397	0.0246
NT		397	Advertisement (20 words, Botswana Daily News)	0.0204	0.0208	0.0397	0.0246
NT		398	Total charge for undertaking a funeral arrangement for one, including transport	0.6048	0.9140	1.1556	0.8471
NT		399	Union's monthly subscription fee	0.0796	0.0202	0.0070	0.0400
NT		400	Fees for legal services (initial consultation 2for will and trust)	0.6155	0.0135	0.0047	0.2408