

# CONSUMER PRICE INDEX

January 2014

# STATISTICS BOTSWANA

Copyrights©Statistics Botswana 2014

**Contact Statistician:**

Phaladi Labobedi

**Tel:** (267) 3190714

**Fax:** (267) 3952 201

**Statistics Botswana.** Private Bag 0024 Botswana  
**Tel:** (267) 367 1300. **Fax:** (267) 395 2201. **Email:** csobots.@gov.bw **Website:** www.cso.gov.bw

## CONTENTS

## COMMENTARY

[Section 1: Headline Inflation](#)

[Section 2: Core Inflation](#)

## CHARTS

1. National Rates of Inflation, January 2011 – January 2014
2. Monthly Changes in the Cost-of-Living Index, January 2011 – January 2014
3. Non-Tradable Inflation Rates, January 2011 – January 2014
4. Tradable Inflation Rates, January 2011 - January 2014

## TABLES

1. Cost-of-Living Index Series (January 2011 – January 2014)
2. National Cost-of-Living Group and Section Indices
3. Cost-of-Living Index by Tradability (January 2011 – January 2014)
4. Core Inflation Rates
5. Annual Average Inflation Rates 2008-2013

## GLOSSARY

## COMMENTARY

### Section 1: Headline Inflation

The annual inflation rate was 4.4 percent in January 2014, a rise of 0.3 of a percentage point on the December 2013 rate of 4.1 percent. Annual inflation in January 2014 was lower than the 7.5 percent recorded during the same month in 2013. The downward movement of annual inflation rate between January 2013 and January 2014 was mainly due to the decrease in the inflation rates of major commodity groups such as Transport (from 10.9 to 1.9 percent), Food & Non-Alcoholic Beverages (from 7.5 to 3.6 percent) and Alcoholic Beverages, Tobacco & Narcotics (from 12.1 to 8.3 percent). The inflation rates for regions between December 2013 to January 2014, indicated that urban villages' went up to 4.5 from 4.0 percent, rural villages' declined from 5.3 percent to 5.0 percent while cities and towns' rose to 4.0 from 3.6 percent.

The January 2014 national Consumer Price Index registered an increase of 0.9 percent, advancing from 171.7 realized in December 2013 to 173.1 in January 2014. The urban villages' index moved from 170.5 to 172.2, recording an increase of 1.0 percent. The cities and towns' index realized a rise of 0.8 percent, from 170.2 to 171.7 between the two months while the rural villages' index moved from 177.3 to 178.6 between December 2013 and January 2014, recording an increase of 0.8 percent.

Four group indices recorded changes of at least 1.0 percent between December 2013 and January 2014, Education (7.4 percent), Health (4.5 percent), Alcoholic Beverages, Tobacco & Narcotics (1.6 percent) and Restaurants & Hotels (1.6 percent).

The Education Group index recorded an increase of 7.4 percent, from 148.4 in December 2013 to 159.4 in January 2014. The constituent section indices of Pre-primary & Primary Education and Secondary & Tertiary Education recorded increases of 13.6 and 3.1 percent respectively. The Pre-primary & Primary Education section index was 210.4 in January 2014, up from 185.1 in December 2013. The Secondary & Tertiary Education section index moved from 130.5 in December 2013 to 134.5 in the month under review. The rise was mainly attributed to increase in the private secondary, pre-primary and primary education school fees and school uniform prices for public primary schools.

The Health index group upped from 150.7 to 157.4, registering an increase of 4.5 percent between December 2013 and January 2014. The increase was attributed to the increase in the section indices of Out-patient Services (6.8 percent), Hospital Services (4.4 percent) and Medical Products, Appliances & Equipment (1.3 percent).

The Restaurants & Hotels index group moved from 218.5 to 221.9, registering an increase of 1.6 percent between December 2013 and January 2014. The increase was attributed to the increase in the section index of Restaurants, Cafés & the Like which increased by 1.6 percent.

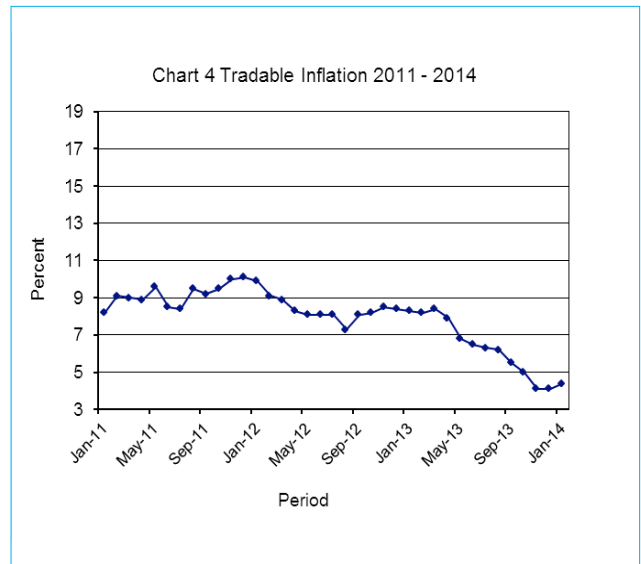
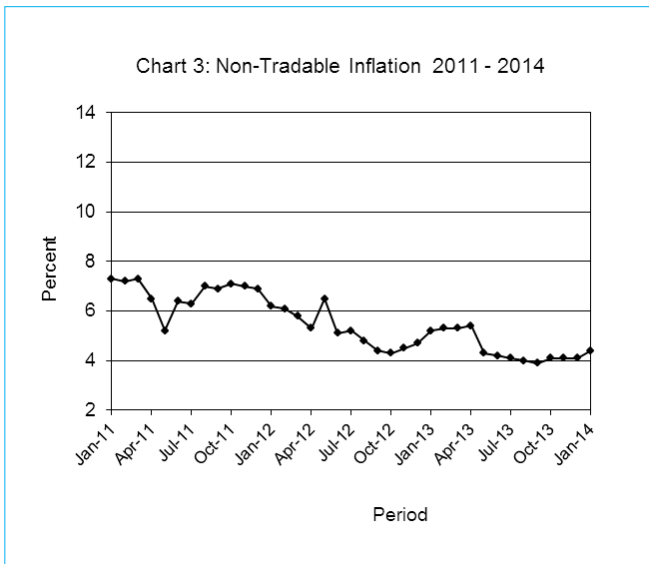
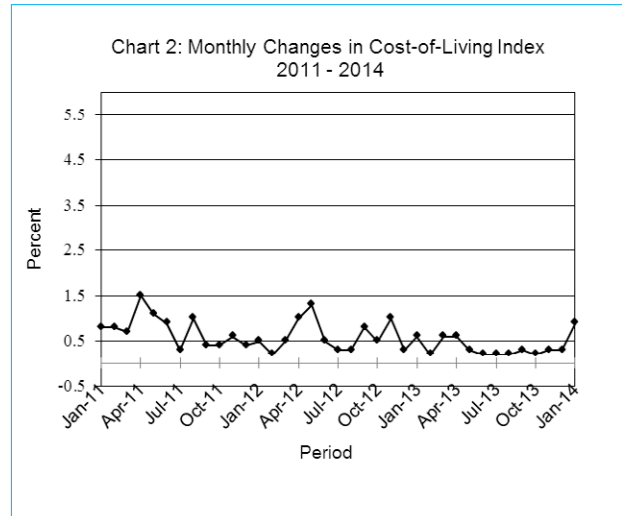
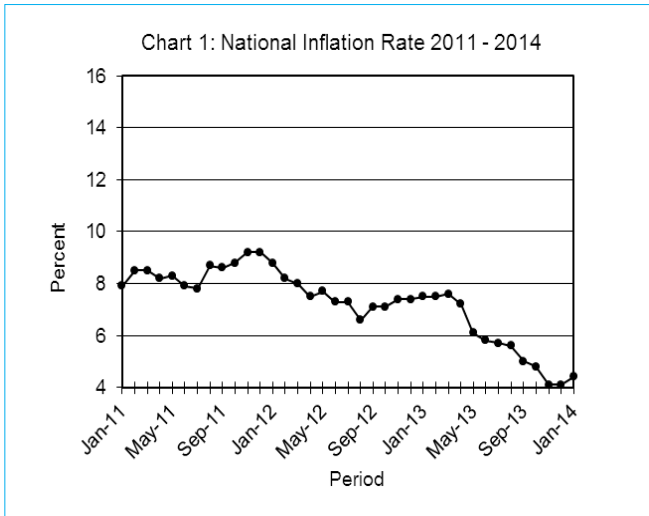
The Alcoholic Beverages, Tobacco & Narcotics group index recorded an increase of 1.6 percent, from 231.0 in December 2013 to 234.8 in January 2014. This was due to a general increase in the constituent section indices, Alcoholic Beverages (1.9 percent) and Tobacco (0.2 percent).

All-Tradable inflation rate rose by 0.3 of a percentage point between December 2013 and January 2014, which is from 4.1 to 4.4 percent. The Domestic Tradable inflation rate recorded an increase of 1.0 percentage point, from 4.8 percent in December 2013 to 5.8 percent in January 2014. Non-Tradable inflation went up by 0.3 of a percentage point in January 2014, registering an increase of 4.4 percent against 4.1 percent recorded in December 2013. The Imported Tradable inflation rate registered a drop of 0.1 of a percentage point from 3.7 to 3.6 percent between December 2013 and January 2014.

The All-Tradable index moved from 179.5 in December 2013 to 181.0 in January 2014, recording an increase of 0.8 percent. The Domestic Tradable index advanced from 193.3 to 196.4, giving a rise of 1.6 percent. The Non-Tradable index shifted from 153.3 to 154.9, an increase of 1.0 percent, whereas the Imported Tradable index went up by 0.4 percent, from 172.4 in December 2013 to 173.1 in January 2014.

## Section 2: Core Inflation

The Core Inflation rate by exclusion increased by 0.5 of a percentage point from 4.7 percent to 5.2 percent between December 2013 and January 2014, while the Trimmed Mean Core Inflation rate rose by 0.1 of a percentage point from 4.0 percent to 4.1 percent between the two months under review.



A.N. Majelantle  
 Statistician General  
 14<sup>th</sup> February 2014

**TABLE 1: COST OF LIVING INDEX (September 2006 =100.0)**

		Food	Alcohol & Tobacco	Clothing & Footwear	Housing	Furniture etc	Health	Transport	Com- muni- ca- tion	Rec. & Culture	Edu- ca- tion	Rest. & Ho- tels	Miscel- laneous
Weights		21.84	9.29	7.52	11.46	6.76	2.71	18.98	3.01	2.22	3.37	3.27	9.57
(1)	(2)	(3)	(4)	(5)	(6)	(7)	(8)	(9)	(10)	(11)	(12)	(13)	(14)
<b>2011</b>	Jan	158.2	183.4	127.5	129.1	142.3	128.7	133.7	96.4	117.1	133.2	172.7	122.6
	Feb	159.1	183.9	127.9	129.4	142.9	128.8	137.5	96.4	117.6	133.2	172.9	122.6
	Mar	160.5	186.0	128.5	130.9	144.6	129.1	137.7	96.4	118.5	133.2	173.7	122.8
	Apr	164.4	188.5	131.0	131.1	145.3	133.0	139.0	96.4	123.4	133.2	175.5	125.7
	May	165.8	191.3	132.1	131.8	146.7	133.3	142.8	91.2	124.1	133.2	179.3	126.1
	Jun	166.6	191.9	133.1	137.6	148.9	133.6	143.3	91.2	124.4	133.2	182.5	126.6
	Jul	167.0	192.2	134.4	138.2	149.5	133.6	143.4	91.2	124.5	133.2	183.4	126.7
	Aug	167.9	192.4	135.1	138.9	150.4	133.7	148.7	91.2	124.7	133.2	183.7	126.8
	Sept	168.8	192.4	135.8	140.0	152.9	133.9	148.8	91.2	124.8	133.2	184.5	126.9
	Oct	169.8	192.8	136.4	140.6	153.9	136.0	149.4	91.2	125.3	133.2	184.6	127.1
	Nov	170.7	192.9	137.2	141.2	154.3	136.1	152.6	91.2	125.3	133.2	185.3	127.2
	Dec	171.8	192.8	138.8	141.8	155.2	136.4	152.6	91.2	125.4	133.2	186.0	127.2
<b>2012</b>	Jan	172.3	193.5	139.6	141.9	155.6	136.5	153.4	91.2	125.6	141.5	187.1	127.7
	Feb	173.3	193.6	140.2	142.0	155.9	136.9	153.5	91.2	125.7	141.5	187.5	127.7
	Mar	174.6	196.0	140.7	142.4	156.6	137.2	153.5	91.2	125.9	141.7	189.5	127.7
	Apr	177.0	201.2	140.9	142.4	157.5	141.0	153.8	91.7	130.2	141.7	192.7	128.2
	May	178.4	204.7	141.3	147.4	158.1	141.3	157.8	91.7	130.3	141.7	193.7	128.3
	Jun	179.6	205.2	141.9	148.6	160.1	141.5	158.2	91.7	130.4	141.7	194.9	128.4
	Jul	180.4	205.8	142.5	148.4	160.6	142.1	159.3	91.7	130.9	141.7	195.3	128.6
	Aug	181.0	206.1	144.0	148.4	161.2	142.3	159.9	91.7	131.8	141.7	196.1	128.2
	Sept	181.7	206.9	145.5	148.5	161.9	142.6	164.2	91.7	132.1	141.7	199.3	128.2
	Oct	182.8	210.7	146.0	148.4	162.4	142.7	164.4	91.7	132.3	141.7	201.0	128.3
	Nov	183.4	215.5	146.8	148.5	163.0	142.7	168.2	91.7	132.5	141.7	203.8	128.5
	Dec	184.2	216.3	147.5	148.7	163.5	143.1	169.2	91.7	132.6	141.7	204.1	128.6
<b>2013</b>	Jan	185.2	216.9	148.0	148.8	164.0	146.8	170.0	91.7	132.6	148.4	204.6	129.2
	Feb	186.0	217.2	148.6	148.9	164.5	147.2	170.1	91.7	132.8	148.4	204.9	129.2
	Mar	187.1	222.1	149.1	149.5	165.2	147.4	170.4	91.7	133.0	148.4	205.6	129.3
	Apr	187.7	226.1	150.4	152.2	165.8	147.6	170.5	91.7	135.9	148.4	208.2	129.0
	May	188.3	226.7	151.5	152.2	166.3	147.8	170.7	91.7	136.0	148.4	210.1	129.3
	Jun	188.6	226.9	152.3	153.4	167.4	148.4	170.7	91.7	136.1	148.4	210.6	129.3
	Jul	188.8	227.2	152.9	153.5	167.9	148.7	171.2	91.7	136.3	148.4	210.8	129.6
	Aug	189.5	227.5	153.3	153.7	168.2	149.0	171.4	91.7	136.5	148.4	213.0	129.7
	Sept	190.2	228.0	153.8	154.5	169.1	149.1	171.4	92.0	137.1	148.4	213.8	129.8
	Oct	190.7	228.2	154.3	154.7	169.5	150.2	171.5	92.0	137.4	148.4	214.5	130.8
	Nov	191.2	229.2	155.3	154.8	170.8	150.4	172.1	92.0	138.4	148.4	215.8	131.0
	Dec	191.4	231.0	155.9	155.2	171.5	150.7	172.2	92.1	138.6	148.4	218.5	131.1
<b>2014</b>	Jan	191.9	234.8	156.9	155.4	171.8	157.4	173.2	92.1	139.1	159.4	221.9	131.6
<b>% Change on last month</b>		<b>0.3</b>	<b>1.6</b>	<b>0.6</b>	<b>0.1</b>	<b>0.2</b>	<b>4.5</b>	<b>0.6</b>	<b>0.0</b>	<b>0.4</b>	<b>7.4</b>	<b>1.6</b>	<b>0.4</b>

**TABLE 1: COST OF LIVING INDEX(Cont.)**

		All Items Index	National Inflation Rate	Monthly Change	Towns & Cities Index	Urban Village Index	Rural Villages Index	Towns & Cities	Annual Inflation Urban Villages	Rural
			%	%	<b>47.33</b>	<b>33.76</b>	<b>18.91</b>	%	%	%
<b>2011</b>	Jan	141.8	<b>7.9</b>	<b>0.8</b>	141.3	141.0	144.5	<b>8.8</b>	<b>7.5</b>	<b>6.4</b>
	Feb	142.9	<b>8.5</b>	<b>0.8</b>	142.4	142.2	145.5	<b>9.5</b>	<b>8.4</b>	<b>6.6</b>
	Mar	143.8	<b>8.5</b>	<b>0.7</b>	143.2	143.2	146.6	<b>9.3</b>	<b>8.7</b>	<b>6.0</b>
	Apr	146.0	<b>8.2</b>	<b>1.5</b>	145.3	145.5	148.8	<b>8.9</b>	<b>8.5</b>	<b>6.0</b>
	May	147.6	<b>8.3</b>	<b>1.1</b>	146.9	146.9	150.5	<b>9.0</b>	<b>8.5</b>	<b>6.2</b>
	Jun	149.0	<b>7.9</b>	<b>0.9</b>	148.4	148.1	152.0	<b>8.3</b>	<b>8.1</b>	<b>6.4</b>
	Jul	149.3	<b>7.8</b>	<b>0.3</b>	148.9	148.3	152.3	<b>8.4</b>	<b>7.7</b>	<b>6.3</b>
	Aug	150.8	<b>8.7</b>	<b>1.0</b>	150.4	149.8	153.4	<b>9.1</b>	<b>8.9</b>	<b>7.5</b>
	Sept	151.4	<b>8.6</b>	<b>0.4</b>	150.9	150.6	153.9	<b>8.9</b>	<b>8.6</b>	<b>7.6</b>
	Oct	152.0	<b>8.8</b>	<b>0.4</b>	151.4	151.5	154.6	<b>9.0</b>	<b>8.9</b>	<b>8.1</b>
	Nov	153.0	<b>9.2</b>	<b>0.6</b>	152.4	152.7	155.0	<b>9.3</b>	<b>9.6</b>	<b>8.2</b>
	Dec	153.5	<b>9.2</b>	<b>0.4</b>	152.9	153.1	155.9	<b>9.4</b>	<b>9.4</b>	<b>8.3</b>
<b>2012</b>	Jan	154.3	<b>8.8</b>	<b>0.5</b>	153.5	154.0	157.0	<b>8.6</b>	<b>9.2</b>	<b>8.6</b>
	Feb	154.7	<b>8.2</b>	<b>0.2</b>	153.7	154.4	157.6	<b>8.0</b>	<b>8.6</b>	<b>8.3</b>
	Mar	155.4	<b>8.0</b>	<b>0.5</b>	154.3	155.1	158.6	<b>7.8</b>	<b>8.3</b>	<b>8.2</b>
	Apr	156.9	<b>7.5</b>	<b>1.0</b>	156.0	156.6	159.8	<b>7.3</b>	<b>7.7</b>	<b>7.4</b>
	May	159.0	<b>7.7</b>	<b>1.3</b>	158.6	158.2	161.3	<b>8.0</b>	<b>7.7</b>	<b>7.2</b>
	Jun	159.8	<b>7.3</b>	<b>0.5</b>	159.3	158.9	162.5	<b>7.4</b>	<b>7.3</b>	<b>6.9</b>
	Jul	160.3	<b>7.3</b>	<b>0.3</b>	159.7	159.5	163.2	<b>7.3</b>	<b>7.6</b>	<b>7.1</b>
	Aug	160.8	<b>6.6</b>	<b>0.3</b>	160.0	160.2	163.6	<b>6.4</b>	<b>6.9</b>	<b>6.6</b>
	Sept	162.1	<b>7.1</b>	<b>0.8</b>	161.9	161.2	164.2	<b>7.2</b>	<b>7.0</b>	<b>6.7</b>
	Oct	162.8	<b>7.1</b>	<b>0.5</b>	162.6	161.7	165.3	<b>7.5</b>	<b>6.8</b>	<b>6.9</b>
	Nov	164.4	<b>7.4</b>	<b>1.0</b>	164.2	163.1	167.2	<b>7.7</b>	<b>6.8</b>	<b>7.9</b>
	Dec	164.9	<b>7.4</b>	<b>0.3</b>	164.3	163.9	168.4	<b>7.5</b>	<b>7.1</b>	<b>8.0</b>
<b>2013</b>	Jan	165.9	<b>7.5</b>	<b>0.6</b>	165.0	164.8	170	<b>7.5</b>	<b>7.0</b>	<b>8.3</b>
	Feb	166.2	<b>7.5</b>	<b>0.2</b>	165.2	165.0	170.7	<b>7.5</b>	<b>6.9</b>	<b>8.3</b>
	Mar	167.1	<b>7.6</b>	<b>0.6</b>	166.0	166.2	171.8	<b>7.5</b>	<b>7.2</b>	<b>8.3</b>
	Apr	168.2	<b>7.2</b>	<b>0.6</b>	167.3	167.4	172.1	<b>7.3</b>	<b>6.9</b>	<b>7.7</b>
	May	168.7	<b>6.1</b>	<b>0.3</b>	168.0	167.5	172.5	<b>5.9</b>	<b>5.9</b>	<b>6.9</b>
	Jun	169.1	<b>5.8</b>	<b>0.2</b>	168.1	168.1	173.3	<b>5.5</b>	<b>5.8</b>	<b>6.6</b>
	Jul	169.4	<b>5.7</b>	<b>0.2</b>	168.5	168.3	173.5	<b>5.5</b>	<b>5.5</b>	<b>6.4</b>
	Aug	169.8	<b>5.6</b>	<b>0.2</b>	168.8	168.7	174.0	<b>5.5</b>	<b>5.3</b>	<b>6.4</b>
	Sept	170.2	<b>5.0</b>	<b>0.3</b>	169.1	169.2	174.7	<b>4.5</b>	<b>5.0</b>	<b>6.4</b>
	Oct	170.6	<b>4.8</b>	<b>0.2</b>	169.4	169.6	175.4	<b>4.2</b>	<b>4.9</b>	<b>6.1</b>
	Nov	171.2	<b>4.1</b>	<b>0.3</b>	169.9	170.0	176.4	<b>3.5</b>	<b>4.3</b>	<b>5.5</b>
	Dec	171.7	<b>4.1</b>	<b>0.3</b>	170.2	170.5	177.3	<b>3.6</b>	<b>4.0</b>	<b>5.3</b>
<b>2014</b>	Jan	173.1	<b>4.4</b>	<b>0.9</b>	171.7	172.2	178.6	<b>4.0</b>	<b>4.5</b>	<b>5.0</b>
	<b>% Change on last month</b>	<b>0.9</b>			<b>0.8</b>	<b>1.0</b>	<b>0.8</b>			

**TABLE 2 :National Cost-of-Living Group and Section Indices (September 2006=100.0)**

Group Section		Weights	This month Jan 2014	Last month Dec 2013	3 months ago Oct 2013	6 months ago Jul 2013	12 months ago Jan 2013	Percent- age Change on: Last month	3 months ago	6 months ago	12 months ago
<b>1</b>	<b>Food &amp; Non-Alcoholic Beverages</b>	<b>21.84</b>	<b>191.9</b>	<b>191.4</b>	<b>190.7</b>	<b>188.8</b>	<b>185.2</b>	<b>0.3</b>	<b>0.6</b>	<b>1.7</b>	<b>3.6</b>
1.1	Bread & Cereals	6.51	187.0	186.8	186.5	185.3	183.0	0.1	0.3	0.9	2.2
1.2	Meat (Fresh, Chilled & Frozen)	3.15	197.6	196.9	195.6	192.9	190.5	0.4	1.0	2.4	3.7
1.3	Fish (Fresh, Chilled & Frozen)	0.20	195.6	194.3	193.1	191.0	185.5	0.6	1.3	2.4	5.4
1.4	Milk, Cheese & Milk Products	2.19	192.4	191.8	191.2	189.2	185.1	0.3	0.6	1.7	3.9
1.5	Oils & Fats	0.90	233.4	233.3	232.7	229.4	223.8	0.0	0.3	1.7	4.3
1.6	Fruit	0.67	138.9	138.7	138.1	136.5	132.8	0.2	0.6	1.7	4.6
1.7	Vegetables	1.94	195.3	194.8	193.2	190.1	186.7	0.3	1.0	2.7	4.6
1.8	Sugar, Jam, Honey, Chocolate & Confectionery	1.36	198.2	197.9	197.0	194.0	189.2	0.1	0.6	2.1	4.7
1.9	Food not else where Classified	2.36	192.1	191.0	190.6	189.3	186.5	0.6	0.8	1.5	3.0
1.10	Coffee, Tea & Cocoa	0.63	212.3	212.0	211.0	207.7	202.3	0.1	0.6	2.2	4.9
1.11	Mineral Waters, Soft Drinks, Fruits & Veg. Juices	1.94	183.1	182.4	182.1	180.4	173.4	0.4	0.6	1.5	5.6
<b>2</b>	<b>Alcoholic Beverages,Tobacco &amp; Narcotics</b>	<b>9.29</b>	<b>234.8</b>	<b>231.0</b>	<b>228.2</b>	<b>227.2</b>	<b>216.9</b>	<b>1.6</b>	<b>2.9</b>	<b>3.3</b>	<b>8.3</b>
2.1	Alcoholic Beverages	8.09	236.0	231.7	228.9	228.2	217.6	1.9	3.1	3.4	8.5
2.2	Tobacco	1.20	226.6	226.3	223.6	220.8	212.3	0.2	1.4	2.7	6.8
<b>3</b>	<b>Clothing and Footwear</b>	<b>7.52</b>	<b>156.9</b>	<b>155.9</b>	<b>154.3</b>	<b>152.9</b>	<b>148.0</b>	<b>0.6</b>	<b>1.7</b>	<b>2.6</b>	<b>6.0</b>
3.1	Clothing	3.33	178.4	177.3	175.8	174.4	167.4	0.6	1.4	2.3	6.6
3.2	Other articles of Clothing	1.82	142.9	141.6	139.0	137.8	134.5	1.0	2.8	3.7	6.3
3.3	Cleaning, Repair & Hire	0.03	200.3	200.2	195.9	193.3	183.0	0.0	2.2	3.6	9.4
3.4	Footwear	2.34	136.6	136.0	135.0	133.5	130.6	0.4	1.2	2.3	4.6
<b>4</b>	<b>Housing, Water, Electr. Gas &amp; Other Fuels</b>	<b>11.46</b>	<b>155.4</b>	<b>155.2</b>	<b>154.7</b>	<b>153.5</b>	<b>148.8</b>	<b>0.1</b>	<b>0.5</b>	<b>1.2</b>	<b>4.4</b>
4.1	Rent paid by Tenants	5.68	134.6	134.6	133.9	133.0	131.3	0.0	0.5	1.2	2.5
4.2	Materials for Maintenance & Repair of dwellings	2.57	150.0	149.6	148.9	147.2	144.9	0.3	0.7	1.9	3.6
4.3	Water Supply & Misc. Services	1.14	160.9	160.2	160.2	160.2	151.4	0.4	0.4	0.4	6.3
4.4	Electricity Gas and other Fuels	2.06	216.1	216.0	215.9	214.2	200.2	0.0	0.1	0.9	7.9
<b>5</b>	<b>Furnishing, H/H Equipment &amp; Routine Maintenance</b>	<b>6.76</b>	<b>171.8</b>	<b>171.5</b>	<b>169.5</b>	<b>167.9</b>	<b>164.0</b>	<b>0.2</b>	<b>1.4</b>	<b>2.3</b>	<b>4.7</b>
5.1	Furniture & Furnishing	2.31	148.3	147.7	143.2	142.4	138.6	0.4	3.6	4.2	7.0
5.2	Carpets & Other Floor Coverings	0.04	156.7	155.7	154.4	151.9	150.4	0.6	1.5	3.2	4.2
5.3	Household Textiles	0.44	160.4	159.9	157.9	154.5	151.8	0.3	1.6	3.8	5.6
5.4	Household Appliances	0.69	145.5	145.3	143.7	142.4	139.5	0.2	1.2	2.2	4.3
5.5	Glassware, Tableware & Household Utensils	0.44	182.6	182.4	180.6	177.9	174.0	0.1	1.1	2.6	4.9
5.6	Small Tools, Miscelaneous Accessories	0.06	176.9	176.1	174.9	174.0	169.2	0.5	1.2	1.7	4.6
5.7	Goods & Services for H/hold Maintanance	2.79	197.8	197.8	197.7	195.9	191.4	0.0	0.1	1.0	3.4

**TABLE 2 : National Cost-of-Living Group and Section Indices (September 2006=100.0) cont.**

Group Section		Weights	This month Jan 2014	Last month Dec 2013	3 months ago Oct 2013	6 months ago Jul 2013	12 months ago Jan 2013	Percent- age Change on: Last month	3 months ago	6 months ago	12 months ago
<b>6</b>	<b>Health</b>	<b>2.71</b>	<b>157.4</b>	<b>150.7</b>	<b>150.2</b>	<b>148.7</b>	<b>146.8</b>	<b>4.5</b>	<b>4.8</b>	<b>5.9</b>	<b>7.2</b>
6.1	Medical Products, App. & Equip.	0.35	197.0	194.4	190.8	185.2	171.4	1.3	3.2	6.3	14.9
6.2	Out-patient Services	0.66	163.7	153.2	153.1	149.8	149.6	6.8	6.9	9.2	9.4
6.3	Hospital Services	1.71	146.9	140.7	140.7	140.7	140.7	4.4	4.4	4.4	4.4
<b>7</b>	<b>Transport</b>	<b>18.98</b>	<b>173.2</b>	<b>172.2</b>	<b>171.5</b>	<b>171.2</b>	<b>170.0</b>	<b>0.6</b>	<b>1.0</b>	<b>1.2</b>	<b>1.9</b>
7.1	Purchase of Vehicles	5.89	155.1	152.3	152.2	152.2	151.1	1.8	1.9	1.9	2.6
7.2	Operation of Personal Transport	10.92	182.0	182.0	180.9	180.4	178.9	0.0	0.6	0.9	1.7
7.3	Transport Services	2.17	177.7	176.5	176.5	176.5	176.5	0.7	0.7	0.7	0.7
<b>8</b>	<b>Communication</b>	<b>3.01</b>	<b>92.1</b>	<b>92.1</b>	<b>92.0</b>	<b>91.7</b>	<b>91.7</b>	<b>0.0</b>	<b>0.1</b>	<b>0.4</b>	<b>0.4</b>
8.1	Postal Services	0.04	226.1	226.1	226.1	209.9	209.9	0.0	0.0	7.7	7.7
8.2	Telephone & Telefax Equipment	0.74	66.6	66.6	66.6	66.6	66.6	0.0	0.0	0.0	0.0
8.3	Telephone & Telefax Services	2.23	98.1	98.1	98.0	98.0	98.0	0.0	0.1	0.1	0.2
<b>9</b>	<b>Recreation &amp; Culture</b>	<b>2.22</b>	<b>139.1</b>	<b>138.6</b>	<b>137.4</b>	<b>136.3</b>	<b>132.6</b>	<b>0.4</b>	<b>1.2</b>	<b>2.0</b>	<b>4.9</b>
9.1	Audio Visual, Photographic & Info. Proce. Equip.	1.09	108.6	108.3	107.6	106.2	105.5	0.3	0.9	2.2	3.0
9.2	Other Recreational Items & Equip.	0.18	169.4	168.0	165.8	162.6	158.8	0.8	2.2	4.2	6.7
9.3	Recreational & Cultural Services	0.76	157.0	157.0	156.1	156.0	149.2	0.0	0.6	0.7	5.2
9.4	Newspapers, Books & Stationary	0.19	211.3	208.4	204.6	203.2	194.6	1.4	3.3	4.0	8.6
<b>10</b>	<b>Education</b>	<b>3.37</b>	<b>159.4</b>	<b>148.4</b>	<b>148.4</b>	<b>148.4</b>	<b>148.4</b>	<b>7.4</b>	<b>7.4</b>	<b>7.4</b>	<b>7.4</b>
10.1	Pre-Primary & Primary Education	1.10	210.4	185.1	185.1	185.1	185.1	13.6	13.6	13.6	13.6
10.2	Secondary & Tertiary Education	2.26	134.5	130.5	130.5	130.5	130.5	3.1	3.1	3.1	3.1
<b>11</b>	<b>Restaurants &amp; Hotels</b>	<b>3.27</b>	<b>221.9</b>	<b>218.5</b>	<b>214.5</b>	<b>210.8</b>	<b>204.6</b>	<b>1.6</b>	<b>3.5</b>	<b>5.3</b>	<b>8.5</b>
11.1	Restaurants, Cafes and the Like	3.08	225.4	221.8	217.6	213.8	207.3	1.6	3.6	5.4	8.7
11.2	Accommodation Services	0.19	164.6	163.6	162.9	161.6	160.0	0.6	1.0	1.9	2.9
<b>12</b>	<b>Miscellaneous Goods &amp; Services</b>	<b>9.57</b>	<b>131.6</b>	<b>131.1</b>	<b>130.8</b>	<b>129.6</b>	<b>129.2</b>	<b>0.4</b>	<b>0.6</b>	<b>1.5</b>	<b>1.9</b>
12.1	Personal Care	0.66	160.2	159.0	158.3	156.6	153.9	0.8	1.2	2.3	4.1
12.2	Personal Effects N.E.C.	0.04	140.2	139.3	138.4	134.7	132.2	0.7	1.3	4.1	6.0
12.3	Social Protection	0.14	189.4	160.5	160.5	160.5	160.5	18.0	18.0	18.0	18.0
12.4	Insurance	6.32	128.4	128.4	128.4	128.6	128.7	0.0	0.0	(0.1)	(0.2)
12.5	Financial Services	0.18	147.8	147.4	146.6	145.8	146.0	0.3	0.8	1.4	1.3
12.6	Taxes Licences, Fees	2.24	127.1	127.1	126.4	121.4	119.9	0.0	0.5	4.7	6.0
	<b>All-Items Index</b>	<b>100.0</b>	<b>173.1</b>	<b>171.7</b>	<b>170.6</b>	<b>169.4</b>	<b>165.9</b>	<b>0.9</b>	<b>1.5</b>	<b>2.2</b>	<b>4.4</b>



**TABLE 3: COST-OF-LIVING INDEX BY TRADABILITY (September 2006 = 100.0)**

		All Items		Non-Tradable		Domestic Tradable		Imported Tradable		All Tradable	
		Index	Inflation	Index	Inflation	Index	Inflation	Index	Inflation	Index	Inflation
Weights		100.00		30.92		23.91		45.17		69.08	
<b>2011</b>	Jan	141.8	<b>7.9</b>	132.8	<b>7.3</b>	158.2	<b>5.9</b>	139.2	<b>9.5</b>	145.6	<b>8.2</b>
	Feb	142.9	<b>8.5</b>	132.9	<b>7.2</b>	158.9	<b>6.2</b>	141.3	<b>10.9</b>	147.2	<b>9.1</b>
	Mar	143.8	<b>8.5</b>	133.7	<b>7.3</b>	160.1	<b>6.4</b>	142.2	<b>10.5</b>	148.2	<b>9.0</b>
	Apr	146.0	<b>8.2</b>	135.2	<b>6.5</b>	162.2	<b>5.5</b>	144.8	<b>10.9</b>	150.6	<b>8.9</b>
	May	147.6	<b>8.3</b>	135.3	<b>5.2</b>	163.5	<b>5.5</b>	147.6	<b>12.1</b>	152.9	<b>9.6</b>
	Jun	149.0	<b>7.9</b>	138.0	<b>6.4</b>	164.8	<b>6.5</b>	148.1	<b>9.6</b>	153.6	<b>8.5</b>
	Jul	149.3	<b>7.8</b>	138.0	<b>6.3</b>	165.4	<b>6.5</b>	148.6	<b>9.5</b>	154.2	<b>8.4</b>
	Aug	150.8	<b>8.7</b>	139.0	<b>7.0</b>	165.7	<b>6.7</b>	150.9	<b>11.1</b>	155.8	<b>9.5</b>
	Sept	151.4	<b>8.6</b>	139.9	<b>6.9</b>	166.3	<b>6.9</b>	151.3	<b>10.6</b>	156.3	<b>9.2</b>
	Oct	152.0	<b>8.8</b>	140.3	<b>7.1</b>	167.0	<b>7.4</b>	152.1	<b>10.8</b>	157.0	<b>9.5</b>
	Nov	153.0	<b>9.2</b>	140.4	<b>7.0</b>	167.5	<b>7.4</b>	153.9	<b>11.6</b>	158.4	<b>10.0</b>
	Dec	153.5	<b>9.2</b>	140.7	<b>6.9</b>	168.0	<b>7.4</b>	154.6	<b>11.8</b>	159.1	<b>10.1</b>
<b>2012</b>	Jan	154.3	<b>8.8</b>	141.1	<b>6.2</b>	169.6	<b>7.2</b>	155.3	<b>11.5</b>	160.0	<b>9.9</b>
	Feb	154.7	<b>8.2</b>	141	<b>6.1</b>	170.4	<b>7.3</b>	155.7	<b>10.2</b>	160.6	<b>9.1</b>
	Mar	155.4	<b>8.0</b>	141.4	<b>5.8</b>	172.2	<b>7.6</b>	156.1	<b>9.8</b>	161.4	<b>8.9</b>
	Apr	156.9	<b>7.5</b>	142.4	<b>5.3</b>	176.0	<b>8.5</b>	156.7	<b>8.2</b>	163.2	<b>8.3</b>
	May	159.0	<b>7.7</b>	144.2	<b>6.5</b>	178.0	<b>8.9</b>	158.9	<b>7.7</b>	165.3	<b>8.1</b>
	Jun	159.8	<b>7.3</b>	145.0	<b>5.1</b>	178.7	<b>8.4</b>	159.7	<b>7.8</b>	166.0	<b>8.1</b>
	Jul	160.3	<b>7.3</b>	145.2	<b>5.2</b>	179.0	<b>8.2</b>	160.5	<b>8.0</b>	166.7	<b>8.1</b>
	Aug	160.8	<b>6.6</b>	145.7	<b>4.8</b>	179.3	<b>8.2</b>	161.1	<b>6.7</b>	167.2	<b>7.3</b>
	Sept	162.1	<b>7.1</b>	146.1	<b>4.4</b>	179.9	<b>8.2</b>	163.4	<b>8.0</b>	168.9	<b>8.1</b>
	Oct	162.8	<b>7.1</b>	146.3	<b>4.3</b>	181.6	<b>8.7</b>	164.0	<b>7.8</b>	169.9	<b>8.2</b>
	Nov	164.4	<b>7.4</b>	146.7	<b>4.5</b>	183.7	<b>9.7</b>	165.9	<b>7.8</b>	172.0	<b>8.5</b>
	Dec	164.9	<b>7.4</b>	147.3	<b>4.7</b>	184.5	<b>9.8</b>	166.3	<b>7.5</b>	172.5	<b>8.4</b>
<b>2013</b>	Jan	165.9	<b>7.5</b>	148.4	<b>5.2</b>	185.6	<b>9.5</b>	167.1	<b>7.6</b>	173.4	<b>8.3</b>
	Feb	166.2	<b>7.5</b>	148.5	<b>5.3</b>	186.0	<b>9.2</b>	167.5	<b>7.6</b>	173.8	<b>8.2</b>
	Mar	167.1	<b>7.6</b>	148.8	<b>5.3</b>	188.4	<b>9.4</b>	168.1	<b>7.7</b>	175.0	<b>8.4</b>
	Apr	168.2	<b>7.2</b>	150.1	<b>5.4</b>	190.9	<b>8.4</b>	168.4	<b>7.5</b>	176.0	<b>7.9</b>
	May	168.7	<b>6.1</b>	150.4	<b>4.3</b>	191.4	<b>7.5</b>	168.9	<b>6.3</b>	176.5	<b>6.8</b>
	Jun	169.1	<b>5.8</b>	151.1	<b>4.2</b>	191.1	<b>6.9</b>	169.5	<b>6.2</b>	176.8	<b>6.5</b>
	Jul	169.4	<b>5.7</b>	151.2	<b>4.1</b>	191.1	<b>6.8</b>	170.1	<b>6.0</b>	177.2	<b>6.3</b>
	Aug	169.8	<b>5.6</b>	151.4	<b>4.0</b>	191.4	<b>6.8</b>	170.5	<b>5.8</b>	177.6	<b>6.2</b>
	Sept	170.2	<b>5.0</b>	151.8	<b>3.9</b>	191.9	<b>6.6</b>	171.0	<b>4.7</b>	178.1	<b>5.5</b>
	Oct	170.6	<b>4.8</b>	152.3	<b>4.1</b>	192.1	<b>5.8</b>	171.4	<b>4.5</b>	178.5	<b>5.0</b>
	Nov	171.6	<b>4.1</b>	152.8	<b>4.1</b>	192.9	<b>5.0</b>	171.9	<b>3.6</b>	179.1	<b>4.1</b>
	Dec	171.7	<b>4.1</b>	153.3	<b>4.1</b>	193.3	<b>4.8</b>	172.4	<b>3.7</b>	179.5	<b>4.1</b>
<b>2014</b>	Jan	173.1	<b>4.4</b>	154.9	<b>4.4</b>	196.4	<b>5.8</b>	173.1	<b>3.6</b>	181.0	<b>4.4</b>
<b>% Change on last month</b>		<b>0.9</b>		<b>1.0</b>		<b>1.6</b>		<b>0.4</b>		<b>0.8</b>	

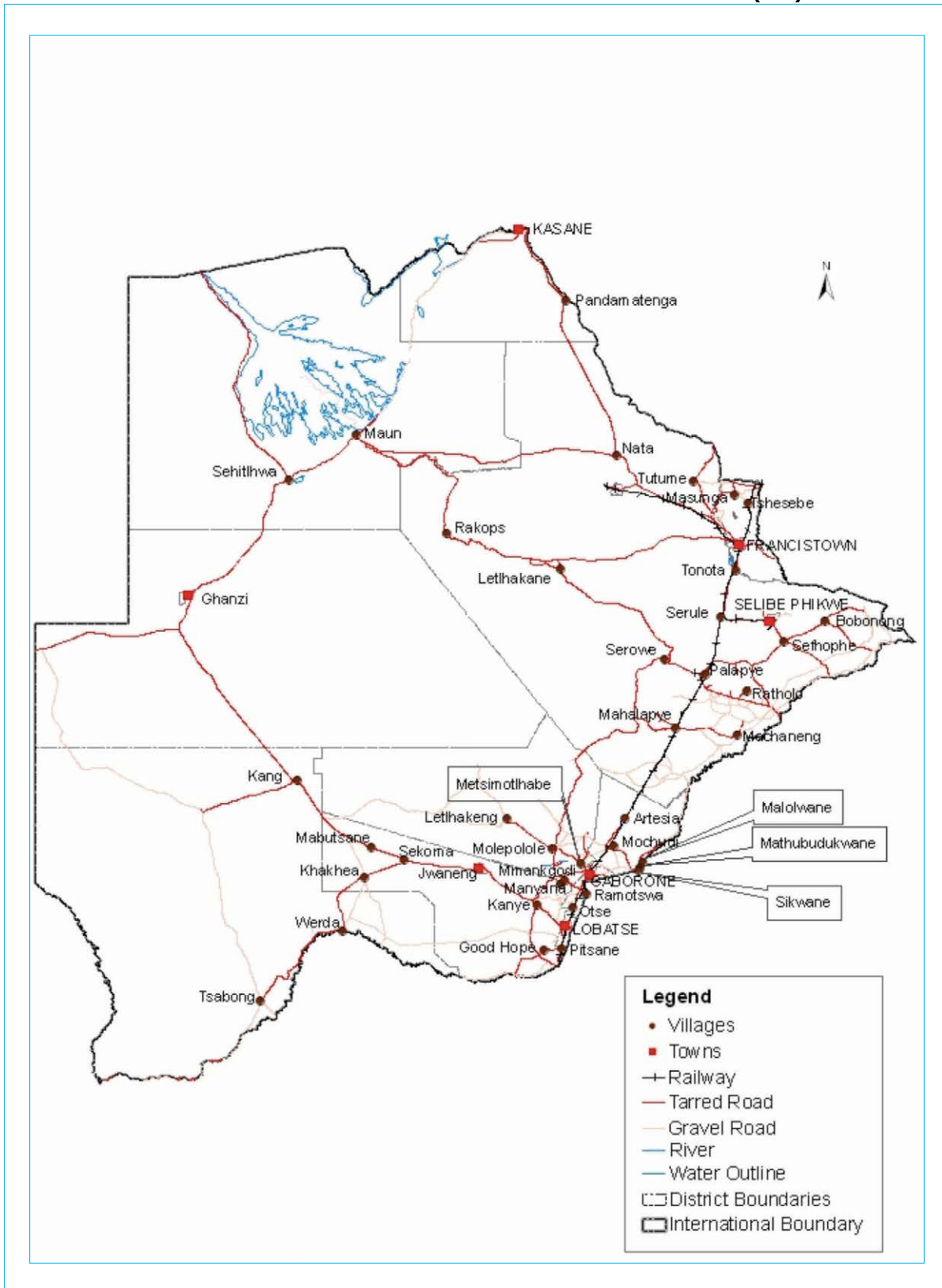
**TABLE 4: Core Inflation Rates by Exclusion and Trimmed Mean**

Year	Month	Consumer Price Index (Trimmed Mean) (September 2006 = 100)	Core Monthly Inflation Rate (Trimmed Mean) (percentage)	Consumer Price Index (Excluding Administered Prices) (September 2006 = 100)	Core Monthly Inflation (Excluding Administered Prices) (percentage)
<b>2011</b>					
	Jan	139.6	8.0	145.5	7.6
	Feb	142.1	8.6	146.0	7.7
	Mar	142.6	8.4	147.1	7.6
	Apr	143.4	8.0	149.4	7.4
	May	148.7	8.2	150.5	7.3
	Jun	148.8	7.6	151.4	7.4
	July	150.3	7.4	151.9	7.3
	Aug	153.7	8.4	152.5	7.4
	Sept	154.8	8.1	153.2	7.4
	Oct	155.6	8.3	154.0	7.6
	Nov	156.3	8.5	154.4	7.5
	Dec	156.9	8.5	155.1	7.5
<b>2012</b>					
	Jan	157.9	8.1	156.0	7.2
	Feb	158.0	7.8	156.5	7.2
	Mar	159.2	7.6	157.4	7.0
	Apr	158.9	7.3	159.2	6.6
	May	160.7	7.3	160.2	6.5
	Jun	163.9	6.8	161.2	6.4
	Jul	164.5	6.8	161.8	6.5
	Aug	164.0	6.3	162.5	6.6
	Sept	165.6	6.5	163.2	6.5
	Oct	163.7	6.7	164.1	6.6
	Nov	165.0	7.1	165.1	6.9
	Dec	165.7	7.1	165.7	6.8
<b>2013</b>					
	Jan	166.8	7.2	166.8	6.9
	Feb	167.2	7.2	167.2	6.9
	Mar	168.3	7.3	168.4	7.0
	Apr	172.2	6.8	169.4	6.4
	May	166.9	6.0	170.0	6.1
	Jun	168.4	5.7	170.3	5.7
	Jul	168.7	5.5	170.7	5.5
	Aug	169.1	5.4	171.1	5.3
	Sept	169.8	4.7	171.7	5.2
	Oct	171.5	4.7	172.2	4.9
	Nov	176.1	4.0	172.9	4.7
	Dec	174.8	4.0	173.5	4.7
<b>2014</b>					
	Jan	173.9	4.1	175.4	5.2

**Table 5: Average Annual Inflation ( September 2006=100)**

Group	Weights	YEAR					
		2008	2009	2010	2011	2012	2013
1 Food & Non-Alcoholic Beverages	21.84	20.2	14.7	3.6	6.9	8.0	5.4
2 Alcoholic Beverages,Tobacco & Narcotics	9.29	13.2	35.2	7.1	8.4	7.6	10.3
3 Clothing and Footwear	7.52	2.0	8.4	8.0	8.9	7.5	6.3
4 Housing, Water, Electr. Gas & Other Fuels	11.46	8.1	4.8	6.4	8.4	7.7	4.3
5 Furnishing, H/H Equipment& Routine Maintenance	6.76	6.0	11.9	9.4	9.0	7.3	4.9
6 Health	2.71	11.3	5.5	2.7	4.5	5.9	5.5
7 Transport	18.98	21.2	(8.4)	12.1	13.2	10.8	7.3
8 Communication	3.01	(0.3)	(0.3)	1.2	(3.0)	(1.4)	0.3
9 Recreation & Culture	2.22	2.3	5.0	6.0	8.3	5.8	4.5
10 Education	3.37	3.9	3.9	5.8	10.6	6.4	4.7
11 Restaurants & Hotels	3.27	12.7	18.8	9.0	9.3	8.4	7.9
12 Miscellaneous Goods & Services	9.57	4.9	3.8	7.0	5.3	2.0	1.2
All-Items Index	<b>100.0</b>	<b>12.6</b>	<b>8.2</b>	<b>6.9</b>	<b>8.5</b>	<b>7.5</b>	<b>5.9</b>

**PRICES COLLECTION COVERAGE FOR BOTSWANA CONSUMER PRICE INDEX (CPI)- 2014**



## Glossary

**Consumer Price Index (CPI)** is an index which measures price changes in goods and services with reference to a base period.

**Inflation** is a measurement of prices movement of goods and services in a particular country.

**Domestic Tradable** refers to the goods and services which a country (Botswana) can export to other countries.

**Imported Tradable** represents the goods and services which a country (Botswana) imports from other countries (trading partners).

**Non-Tradable** refers to the goods and services which a country cannot either export or import to other countries.

**All –Tradable** refers to the total of **Domestic** and **Imported tradable**.

**Trimmed Mean Core Inflation**- attempts to remove 8 percent (by weight) of the commodity sub-groups with the largest price changes at each of the ends of an ordered series of price changes in any given month.

**Core inflation by Exclusion** is a measure used to remove the volatility inherent in prices that are only adjusted periodically and not always in response to currently prevailing market forces.