

Statistics Botswana
Private Bag 0024, Gaborone, Botswana
Tel: (267) 3671300, Fax (267) 3952201,
Email: csobots@gov.bw, Website: www.cso.gov.bw

All correspondence should be addressed to Statistician General

CONSUMER PRICE INDEX – SEPTEMBER 2012

CONTENTS

COMMENTARY

1. Section 1: Headline Inflation
2. Section 2: Core Inflation

CHARTS

1. National Rates of Inflation, January 2010 – September 2012
2. Monthly Changes in the Cost-of-Living Index, January 2010 – September 2012
3. Non-Tradable Inflation Rates, January 2010 – September 2012
4. Tradable Inflation Rates, January 2010 - September 2012
- 5.

TABLES

1. Cost-of-Living Index Series (January 2010 – September 2012)
2. National Cost-of-Living Group and Section Indices
3. Cost-of-Living Index by Tradability (January 2010 – September 2012)
4. Core Inflation Rates

COMMENTARY

Section 1: Headline Inflation

The September 2012, national year-on-year inflation rate was at 7.1 percent, up by 0.5 of a percentage point from 6.6 percent in August 2012. The cities and towns' inflation rate grew by 0.8 of a percentage point from 6.4 percent in August to 7.2 percent in September. The urban villages' inflation rate increased by 0.1 of a percentage point from 6.9 to 7.0 percent, the rural villages' inflation rate also registered an increase of 0.1 of a percentage point from 6.6 percent in August to 6.7 percent in September.

The September national Consumer Price Index was at 162.1, registering an increase of 0.8 percent on the August index of 160.8. The cities and towns' index moved from 160.0 to 161.9 between August and September 2012, up by 1.1 percent. The urban villages' index went up by 0.6 percent, from 160.2 to 161.2 between the two months, while the rural villages' index rose from 163.6 to 164.2, recording an increase of 0.4 percent.

Three group indices recorded changes of at least 1.0 percent between August and September – *Transport (2.6 percent)*, *Restaurants & Hotels (1.6 percent)* and *Clothing & Footwear (1.1 percent)*.

The *Transport* group index registered an increase of 2.6 percent, from 159.9 in August to 164.2 in September. This was due to a rise in the constituent section index of *Operation of Personal Transport*, which went up by 4.4 percent. The increase in *Operation of Personal Transport* section index was attributed to the rise in retail pump prices for petrol and diesel by P0.50 per litre each, which effected on 17th September 2012.

The *Restaurants & Hotels* group index rose by 1.6 percent from 196.1 to 199.3 between the two months. This is owing to an increase in the constituent section indices of *Restaurants, Cafes and the Like (1.7 percent)* and *Accommodation Services (0.6 percent)*.

The *Clothing and Footwear* index group moved from 144.0 to 145.5, registering an increase of 1.1 percent between August and September. The increase was attributed to the general rise in the constituent section indices, notably, *Clothing (1.2 Percent)*, *Footwear (1.1 Percent)*, *Cleaning, Repair & Hire (0.8 Percent)* and *Other articles of Clothing (0.7 Percent)*.

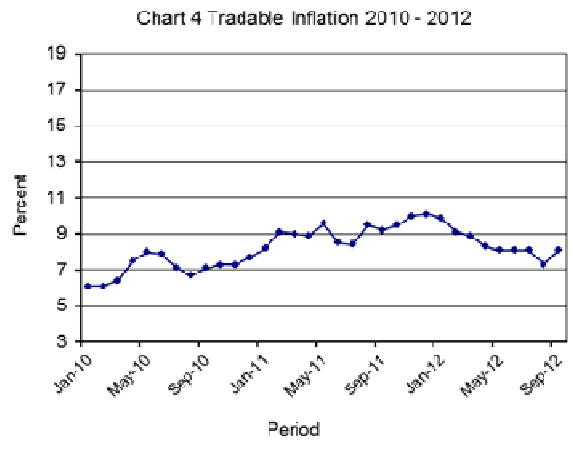
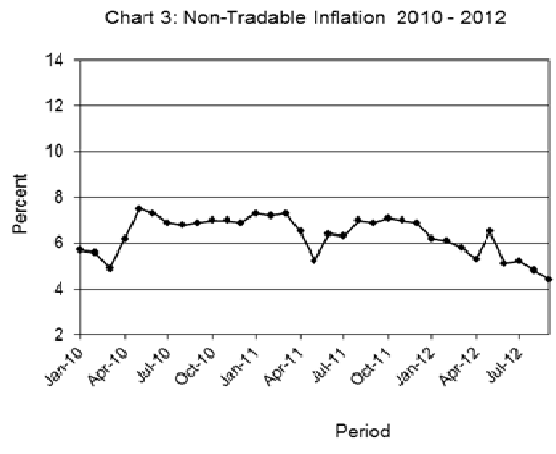
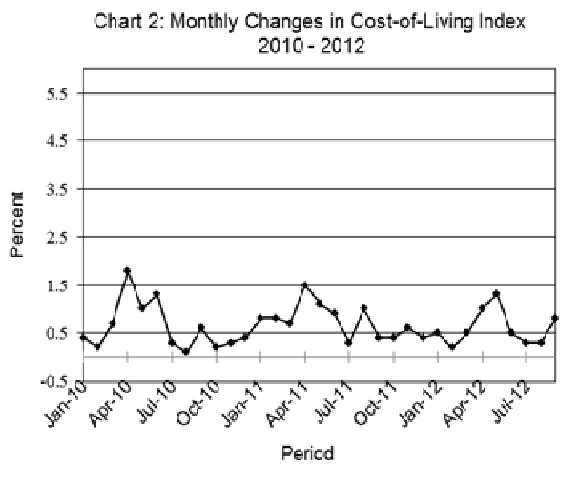
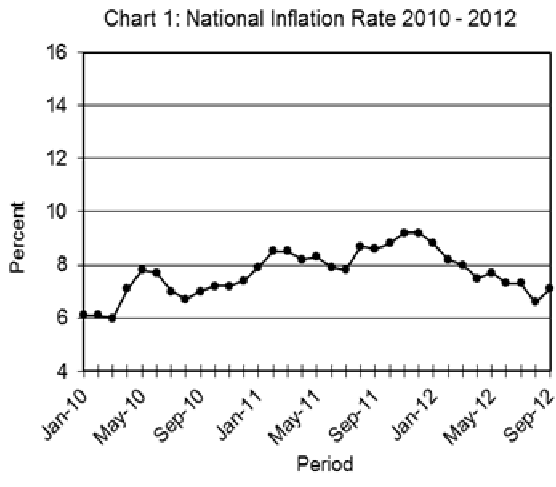
The *Food & Non-Alcoholic Beverages* index group moved from 181.0 to 181.7, registering an increase of 0.3 percent between August and September. The increase was attributed to the general rise in the constituent section indices.

The *All-Tradable* inflation rate for September stood at 8.1 percent, up by 0.8 of a percentage point on the August rate of 7.3 percent. The *Imported Tradable* inflation rate registered an increase of 1.3 percentage points, from 6.7 to 8.0 percent; *Non-Tradable* inflation rate was 4.4 percent in September, down by 0.4 of a percentage point on the August rate of 4.8 percent, while the *Domestic Tradable* inflation rate stood at 8.2 percent, same as in August.

The *All-Tradable* index went up by 1.0 percent, from 167.2 in August to 168.9 in September. The *Imported Tradable* index rose by 1.4 percent, from 161.1 to 163.4 in the two months. The *Domestic Tradable* index in September was at 179.9, up by 0.4 percent on the August level of 179.3. The *Non-Tradable* index recorded an increase of 0.3 percent, from 145.7 in August to 146.1 in September.

Section 2: Core Inflation

The Trimmed Mean Core Inflation rate stood at 6.5 percent in September, an increase of 0.2 of a percentage point from 6.3 percent of the previous month. The Core Inflation rate by exclusion went down by 0.1 of a percentage point from 6.6 to 6.5 percent between August and September 2012.



Maj

A.N. Majelantle
 Acting Statistician General
 15th October 2012

TABLE 1: COST OF LIVING INDEX (September 2006 =100.0)

		Food	Alcohol and Tobacco	Clothing and Footwear	Housing	Furni- ture etc	Health	Trans- port	Commu- nication	Rec. & Culture	Educati- on	Rest. & Hotels	Other
Weights		21.84	9.29	7.52	11.46	6.76	2.71	18.98	3.01	2.22	3.37	3.27	9.57
(1)	(2)	(3)	(4)	(5)	(6)	(7)	(8)	(9)	(10)	(11)	(12)	(13)	(14)
2010	Jan	151.1	165.8	116.9	119.9	130.6	124.9	120.6	94.6	109.9	120.4	155.6	114.4
	Feb	151.1	166.0	117.3	120.0	131.2	125.2	121.0	94.6	110.3	120.4	156.5	114.6
	Mar	152.4	167.6	118.9	121.2	133.1	125.4	121.2	94.6	110.8	120.4	158.3	115.0
	Apr	154.4	174.1	119.9	121.8	134.3	127.3	123.4	95.4	111.1	120.4	162.7	119.5
	May	156.0	176.7	120.5	126.3	135.0	127.6	123.6	95.4	111.4	120.5	164.4	119.7
	Jun	156.1	177.4	121.4	126.8	137.1	127.8	130.2	96.4	111.5	120.5	165.9	120.8
	July	156.4	177.4	122.9	127.3	138.0	128.1	130.3	96.4	115.6	120.5	166.6	121.0
	Aug	156.8	177.6	123.6	127.5	138.5	128.2	129.6	96.4	115.8	120.5	167.5	121.1
	Sept	156.7	179.1	125.0	127.7	139.3	128.3	131.6	96.4	116.1	120.5	168.8	121.4
	Oct	156.7	179.7	126.3	127.9	139.6	128.4	131.7	96.4	116.5	120.5	170.6	121.5
	Nov	157.2	180.4	127.4	128.1	140.4	128.4	131.8	96.4	116.7	120.5	171.8	121.5
	Dec	157.6	182.1	127.1	128.8	141.7	128.6	132.2	96.4	116.9	120.5	171.9	121.7
2011	Jan	158.2	183.4	127.5	129.1	142.3	128.7	133.7	96.4	117.1	133.2	172.7	122.6
	Feb	159.1	183.9	127.9	129.4	142.9	128.8	137.5	96.4	117.6	133.2	172.9	122.6
	Mar	160.5	186.0	128.5	130.9	144.6	129.1	137.7	96.4	118.5	133.2	173.7	122.8
	Apr	164.4	188.5	131.0	131.1	145.3	133.0	139.0	96.4	123.4	133.2	175.5	125.7
	May	165.8	191.3	132.1	131.8	146.7	133.3	142.8	91.2	124.1	133.2	179.3	126.1
	Jun	166.6	191.9	133.1	137.6	148.9	133.6	143.3	91.2	124.4	133.2	182.5	126.6
	Jul	167.0	192.2	134.4	138.2	149.5	133.6	143.4	91.2	124.5	133.2	183.4	126.7
	Aug	167.9	192.4	135.1	138.9	150.4	133.7	148.7	91.2	124.7	133.2	183.7	126.8
	Sept	168.8	192.4	135.8	140.0	152.9	133.9	148.8	91.2	124.8	133.2	184.5	126.9
	Oct	169.8	192.8	136.4	140.6	153.9	136.0	149.4	91.2	125.3	133.2	184.6	127.1
	Nov	170.7	192.9	137.2	141.2	154.3	136.1	152.6	91.2	125.3	133.2	185.3	127.2
	Dec	171.8	192.8	138.8	141.8	155.2	136.4	152.6	91.2	125.4	133.2	186.0	127.2
2012	Jan	172.3	193.5	139.6	141.9	155.6	136.5	153.4	91.2	125.6	141.5	187.1	127.7
	Feb	173.3	193.6	140.2	142.0	155.9	136.9	153.5	91.2	125.7	141.5	187.5	127.7
	Mar	174.6	196.0	140.7	142.4	156.6	137.2	153.5	91.2	125.9	141.7	189.5	127.7
	Apr	177.0	201.2	140.9	142.4	157.5	141.0	153.8	91.7	130.2	141.7	192.7	128.2
	May	178.4	204.7	141.3	147.4	158.1	141.3	157.8	91.7	130.3	141.7	193.7	128.3
	Jun	179.6	205.2	141.9	148.6	160.1	141.5	158.2	91.7	130.4	141.7	194.9	128.4
	Jul	180.4	205.8	142.5	148.4	160.6	142.1	159.3	91.7	130.9	141.7	195.3	128.6
	Aug	181.0	206.1	144.0	148.4	161.2	142.3	159.9	91.7	131.8	141.7	196.1	128.2
	Sept	181.7	206.9	145.5	148.5	161.9	142.6	164.2	91.7	132.1	141.7	199.3	128.2
% Change on Last month		0.3	0.3	1.1	0.1	0.5	0.2	2.6	0.0	0.2	0.0	1.6	0.1

TABLE 1: COST OF LIVING INDEX(Cont.)

	All Items Index	National Inflation Rate	Monthly Change	Towns & Cities Index	Urban Village Index	Rural Villages Index	Annual Inflation		
							Towns & Cities	Urban Villages	Rural
		%	%	47.33	33.76	18.91	%	%	%
2010 Jan	131.4	6.1	0.4	129.8	131.2	135.8	6.7	5.9	5.1
Feb	131.7	6.1	0.2	130.1	131.2	136.4	6.6	5.8	5.4
Mar	132.6	6.0	0.7	131.0	131.8	138.3	6.5	5.2	5.9
Apr	135.0	7.1	1.8	133.5	134.0	140.4	7.9	6.3	6.6
May	136.3	7.8	1.0	134.8	135.4	141.6	8.7	7.2	6.9
Jun	138.1	7.7	1.3	137.0	137.0	142.8	8.5	7.0	7.0
July	138.6	7.0	0.3	137.4	137.6	143.2	7.9	6.4	6.2
Aug	138.7	6.7	0.1	137.8	137.6	142.7	7.7	5.9	5.6
Sept	139.4	7.0	0.6	138.6	138.7	143.0	8.0	6.4	5.6
Oct	139.7	7.2	0.2	138.8	139.1	143.0	8.0	6.8	5.9
Nov	140.1	7.2	0.3	139.5	139.3	143.2	8.2	6.7	5.4
Dec	140.6	7.4	0.4	139.8	139.9	144.0	8.1	7.2	6.2
2011 Jan	141.8	7.9	0.8	141.3	141.0	144.5	8.8	7.5	6.4
Feb	142.9	8.5	0.8	142.4	142.2	145.5	9.5	8.4	6.6
Mar	143.8	8.5	0.7	143.2	143.2	146.6	9.3	8.7	6.0
Apr	146.0	8.2	1.5	145.3	145.5	148.8	8.9	8.5	6.0
May	147.6	8.3	1.1	146.9	146.9	150.5	9.0	8.5	6.2
Jun	149.0	7.9	0.9	148.4	148.1	152.0	8.3	8.1	6.4
Jul	149.3	7.8	0.3	148.9	148.3	152.3	8.4	7.7	6.3
Aug	150.8	8.7	1.0	150.4	149.8	153.4	9.1	8.9	7.5
Sept	151.4	8.6	0.4	150.9	150.6	153.9	8.9	8.6	7.6
Oct	152.0	8.8	0.4	151.4	151.5	154.6	9.0	8.9	8.1
Nov	153.0	9.2	0.6	152.4	152.7	155.0	9.3	9.6	8.2
Dec	153.5	9.2	0.4	152.9	153.1	155.9	9.4	9.4	8.3
2012 Jan	154.3	8.8	0.5	153.5	154.0	157.0	8.6	9.2	8.6
Feb	154.7	8.2	0.2	153.7	154.4	157.6	8.0	8.6	8.3
Mar	155.4	8.0	0.5	154.3	155.1	158.6	7.8	8.3	8.2
Apr	156.9	7.5	1.0	156.0	156.6	159.8	7.3	7.7	7.4
May	159.0	7.7	1.3	158.6	158.2	161.3	8.0	7.7	7.2
Jun	159.8	7.3	0.5	159.3	158.9	162.5	7.4	7.3	6.9
Jul	160.3	7.3	0.3	159.7	159.5	163.2	7.3	7.6	7.1
Aug	160.8	6.6	0.3	160.0	160.2	163.6	6.4	6.9	6.6
Sept	162.1	7.1	0.8	161.9	161.2	164.2	7.2	7.0	6.7
% Change on last month	0.8			1.1	0.6	0.4			

Table 2: National Cost-of-Living Group & Section Indices (September 2006 = 100.0)

Group Section	Weights	This	Last	3 months	6 months	12 months	Percentage Change on:			
		month Sept 2012	month Aug 2012	ago Jun 2012	ago Mar 2012	ago Sept 2011	Last month	3 months ago	6 months ago	12 months ago
1 Food & Non-Alcoholic Beverages	21.84	181.7	181.0	179.6	174.6	168.8	0.3	1.1	4.0	7.6
1.1 Bread & Cereals	6.51	180.6	180.4	179.3	171.5	162.4	0.1	0.7	5.3	11.2
1.2 Meat (Fresh, Chilled & Frozen)	3.15	185.3	184.3	183.7	180.4	175.7	0.5	0.8	2.7	5.4
1.3 Fish (Fresh, Chilled & Frozen)	0.20	182.1	180.9	177.4	172.4	169.8	0.7	2.7	5.6	7.3
1.4 Milk, Cheese & Milk Products	2.19	183.3	183.1	181.6	178.7	177.7	0.1	0.9	2.6	3.2
1.5 Oils & Fats	0.90	217.6	216.9	214.5	213.0	206.1	0.3	1.5	2.2	5.6
1.6 Fruit	0.67	129.0	128.0	125.5	124.6	114.8	0.8	2.8	3.6	12.4
1.7 Vegetables	1.94	180.3	179.3	176.7	171.4	169.7	0.6	2.1	5.2	6.3
1.8 Sugar, Jam, Honey, Chocolate & Confectionery	1.36	185.9	185.3	184.0	177.9	172.1	0.3	1.0	4.5	8.0
1.9 Food not else where Classified	2.36	182.1	180.8	179.5	176.3	172.5	0.7	1.4	3.3	5.6
1.10 Coffee, Tea & Cocoa	0.63	201.8	201.7	199.8	193.5	187.2	0.1	1.0	4.3	7.8
1.11 Mineral Waters, Soft Drinks, Fruits & Veg. Juices	1.94	170.5	169.6	167.8	163.6	156.7	0.5	1.6	4.2	8.8
2 Alcoholic Beverages, Tobacco & Narcotics	9.29	206.9	206.1	205.2	196.0	192.4	0.3	0.8	5.5	7.5
2.1 Alcoholic Beverages	8.09	206.6	205.9	205.2	195.8	192.3	0.4	0.7	5.5	7.4
2.2 Tobacco	1.20	208.7	208.0	205.4	197.8	193.4	0.3	1.6	5.5	7.9
3 Clothing and Footwear	7.52	145.5	144.0	141.9	140.7	135.8	1.1	2.5	3.4	7.2
3.1 Clothing	3.33	164.6	162.7	161.5	160.1	153.6	1.2	1.9	2.8	7.2
3.2 Other articles of Clothing	1.82	131.6	130.7	127.0	126.4	121.3	0.7	3.7	4.2	8.6
3.3 Cleaning, Repair & Hire	0.03	180.3	179.0	175.6	170.6	164.0	0.8	2.7	5.7	9.9
3.4 Footwear	2.34	128.5	127.2	125.0	123.6	121.3	1.1	2.8	3.9	6.0
4 Housing, Water, Electr. Gas & Other Fuels	11.46	148.5	148.4	148.6	142.4	140.0	0.1	(0.1)	4.3	6.0
4.1 Rent paid by Tenants	5.68	131.1	130.8	130.8	128.4	126.8	0.2	0.2	2.1	3.4
4.2 Materials for Maintenance & Repair of dwellings	2.57	143.7	143.5	142.2	141.8	137.9	0.1	1.1	1.3	4.2
4.3 Water Supply & Misc. Services	1.14	151.4	151.4	151.4	102.2	102.2	0.0	0.0	48.2	48.2
4.4 Electricity Gas and other Fuels	2.06	200.8	201.0	203.9	204.0	200.1	(0.1)	(1.5)	(1.5)	0.4
5 Furnishing, H/H Equipment & Routine Maintenance	6.76	161.9	161.2	160.1	156.6	152.9	0.5	1.2	3.4	5.9
5.1 Furniture & Furnishing	2.31	136.6	135.9	134.5	132.3	127.8	0.5	1.6	3.3	6.8
5.2 Carpets & Other Floor Coverings	0.04	149.1	147.8	147.1	145.8	143.8	0.9	1.4	2.2	3.7
5.3 Household Textiles	0.44	150.1	149.5	148.1	145.6	141.8	0.4	1.4	3.1	5.9
5.4 Household Appliances	0.69	137.6	136.4	135.3	133.0	130.4	0.9	1.7	3.5	5.6
5.5 Glassware, Tableware & Household Utensils	0.44	171.6	168.7	164.4	161.1	157.2	1.7	4.4	6.5	9.2
5.6 Small Tools, Miscellaneous Accessories	0.06	167.9	167.4	166.9	165.4	162.3	0.3	0.6	1.5	3.4
5.7 Goods & Services for H/hold Maintenance	2.79	189.3	188.8	188.7	183.6	180.2	0.3	0.3	3.1	5.0

Table 2: National Cost-of-Living Group & Section Indices (September 2006 = 100.0) (Cont.)

Group Section	Weights	This	Last	3 months	6 months	12 months	Percentage Change on:			
		month	month	ago	ago	ago	Last	3 months	6 months	12 months
		Sept 2012	Aug 2012	Jun 2012	Mar 2012	Sept 2011	month	ago	ago	ago
6 Health	2.71	142.6	142.3	141.5	137.2	133.9	0.2	0.8	3.9	6.4
6.1 Medical Products, App. & Equip.	0.35	167.9	165.9	163.5	156.8	147.1	1.2	2.7	7.1	14.1
6.2 Out-patient Services	0.66	148.0	148.0	145.9	133.2	124.8	0.0	1.5	11.1	18.6
6.3 Hospital Services	1.71	135.3	135.3	135.3	134.7	134.7	0.0	0.0	0.4	0.4
7 Transport	18.98	164.2	159.9	158.2	153.5	148.8	2.6	3.7	6.9	10.3
7.1 Purchase of Vehicles	5.89	151.0	150.9	149.0	148.9	146.7	0.1	1.3	1.5	3.0
7.2 Operation of Personal Transport	10.92	171.8	164.6	162.6	154.5	147.6	4.4	5.6	11.2	16.4
7.3 Transport Services	2.17	161.1	161.1	160.9	160.9	160.3	0.0	0.1	0.1	0.5
8 Communication	3.01	91.7	91.7	91.7	91.2	91.2	0.0	0.0	0.6	0.6
8.1 Postal Services	0.04	209.9	209.9	209.9	170.8	170.8	0.0	0.0	22.9	22.9
8.2 Telephone & Telefax Equipment	0.74	66.6	66.6	66.6	66.6	66.6	0.0	0.0	0.0	0.0
8.3 Telephone & Telefax Services	2.23	98.0	98.0	97.9	97.9	97.9	0.0	0.0	0.0	0.0
9 Recreation & Culture	2.22	132.1	131.8	130.4	125.9	124.8	0.2	1.3	4.9	5.9
9.1 Audio Visual, Photographic & Info. Proce. Equip.	1.09	105.0	104.7	103.7	103.0	102.5	0.3	1.2	2.0	2.4
9.2 Other Recreational Items & Equip.	0.18	157.6	156.5	150.0	150.1	146.5	0.7	5.0	5.0	7.5
9.3 Recreational & Cultural Services	0.76	149.0	148.9	148.4	137.5	137.0	0.0	0.4	8.4	8.7
9.4 Newspapers, Books & Stationary	0.19	193.4	192.9	191.0	186.7	181.1	0.3	1.3	3.6	6.8
10 Education	3.37	141.7	141.7	141.7	141.7	133.2	0.0	0.0	0.0	6.4
10.1 Pre-Primary & Primary Education	1.10	173.5	173.5	173.5	173.4	154.5	0.0	0.0	0.0	12.3
10.2 Secondary & Tertiary Education	2.26	126.2	126.2	126.2	126.2	122.8	0.0	0.0	0.0	2.8
11 Restaurants & Hotels	3.27	199.3	196.1	194.9	189.5	184.5	1.6	2.2	5.2	8.0
11.1 Restaurants, Cafes and the Like	3.08	201.9	198.5	197.4	191.9	187.0	1.7	2.3	5.2	8.0
11.2 Accommodation Services	0.19	157.4	156.4	154.5	149.8	144.5	0.6	1.9	5.1	8.9
12 Miscellaneous Goods & Services	9.57	128.2	128.2	128.4	127.7	126.9	0.1	(0.1)	0.4	1.1
12.1 Personal Care	0.66	153.2	152.3	150.5	147.5	144.1	0.6	1.8	3.9	6.3
12.2 Personal Effects N.E.C.	0.04	131.6	131.2	127.2	126.5	118.9	0.3	3.5	4.0	10.7
12.3 Social Protection	0.14	147.8	147.8	147.8	146.8	146.8	0.0	0.0	0.7	0.7
12.4 Insurance	6.32	128.9	128.9	129.6	129.6	128.9	0.0	(0.6)	(0.5)	(0.0)
12.5 Financial Services	0.18	142.8	142.4	141.3	138.0	135.0	0.3	1.0	3.5	5.8
12.6 Taxes Licences, Fees	2.24	116.6	116.6	116.3	114.7	114.3	0.0	0.3	1.7	2.0
All-Items Index	100.0	162.1	160.8	159.8	155.4	151.4	0.8	1.4	4.3	7.1

TABLE 3: COST-OF-LIVING INDEX BY TRADABILITY (September 2006 = 100.0)

Weights	All Items		Non-Tradable		Domestic Tradable		Imported Tradable		All Tradable		
	Index	Inflation	Index	Inflation	Index	Inflation	Index	Inflation	Index	Inflation	
	100.00		30.92		23.91		45.17		69.08		
2010	Jan	131.4	6.1	123.8	5.7	149.3	3.0	127.2	8.5	134.6	6.1
	Feb	131.7	6.1	124.0	5.6	149.5	2.2	127.4	9.0	134.9	6.1
	Mar	132.6	6.0	124.6	4.9	150.5	2.0	128.7	9.3	136.0	6.4
	Apr	135.0	7.1	126.9	6.2	153.7	3.5	130.6	10.1	138.3	7.5
	May	136.3	7.8	128.7	7.5	154.9	4.2	131.7	10.4	139.5	8.0
	Jun	138.1	7.7	129.7	7.3	154.8	4.2	135.1	10.3	141.6	7.9
	July	138.6	7.0	129.9	6.9	155.3	3.8	135.7	9.2	142.2	7.1
	Aug	138.7	6.7	130.0	6.8	155.3	3.8	135.9	8.5	142.4	6.7
	Sept	139.4	7.0	130.9	6.9	155.5	4.3	136.8	8.8	143.1	7.1
	Oct	139.7	7.2	131.0	7.0	155.6	4.3	137.3	9.1	143.4	7.3
	Nov	140.1	7.2	131.2	7.0	155.9	4.3	137.9	9.0	144.0	7.3
	Dec	140.6	7.4	131.6	6.9	156.5	5.0	138.4	9.3	144.5	7.7
2011	Jan	141.8	7.9	132.8	7.3	158.2	5.9	139.2	9.5	145.6	8.2
	Feb	142.9	8.5	132.9	7.2	158.9	6.2	141.3	10.9	147.2	9.1
	Mar	143.8	8.5	133.7	7.3	160.1	6.4	142.2	10.5	148.2	9.0
	Apr	146.0	8.2	135.2	6.5	162.2	5.5	144.8	10.9	150.6	8.9
	May	147.6	8.3	135.3	5.2	163.5	5.5	147.6	12.1	152.9	9.6
	Jun	149.0	7.9	138.0	6.4	164.8	6.5	148.1	9.6	153.6	8.5
	Jul	149.3	7.8	138.0	6.3	165.4	6.5	148.6	9.5	154.2	8.4
	Aug	150.8	8.7	139.0	7.0	165.7	6.7	150.9	11.1	155.8	9.5
	Sept	151.4	8.6	139.9	6.9	166.3	6.9	151.3	10.6	156.3	9.2
	Oct	152.0	8.8	140.3	7.1	167.0	7.4	152.1	10.8	157.0	9.5
	Nov	153.0	9.2	140.4	7.0	167.5	7.4	153.9	11.6	158.4	10.0
	Dec	153.5	9.2	140.7	6.9	168.0	7.4	154.6	11.8	159.1	10.1
2012	Jan	154.3	8.8	141.1	6.2	169.6	7.2	155.3	11.5	160.0	9.9
	Feb	154.7	8.2	141.0	6.1	170.4	7.3	155.7	10.2	160.6	9.1
	Mar	155.4	8.0	141.4	5.8	172.2	7.6	156.1	9.8	161.4	8.9
	Apr	156.9	7.5	142.4	5.3	176.0	8.5	156.7	8.2	163.2	8.3
	May	159.0	7.7	144.2	6.5	178.0	8.9	158.9	7.7	165.3	8.1
	Jun	159.8	7.3	145.0	5.1	178.7	8.4	159.7	7.8	166.0	8.1
	Jul	160.3	7.3	145.2	5.2	179.0	8.2	160.5	8.0	166.7	8.1
	Aug	160.8	6.6	145.7	4.8	179.3	8.2	161.1	6.7	167.2	7.3
	Sept	162.1	7.1	146.1	4.4	179.9	8.2	163.4	8.0	168.9	8.1
% Change on last month		0.8		0.3		0.4		1.4		1.0	

TABLE 4: Core Inflation Rates by Exclusion and Trimmed Mean

Year	Month	Consumer Price Index (Trimmed Mean) (September 2006 = 100)	Core Monthly Inflation Rate (Trimmed Mean) (percentage)	Consumer Price Index (Excluding Administered Prices) (September 2006 = 100)	Core Monthly Inflation (Excluding Administered Prices) (percentage)
2010					
	Jan	129.7	6.7	135.2	5.9
	Feb	129.0	6.7	135.5	5.8
	Mar	130.0	6.5	136.7	5.6
	Apr	133.1	7.7	139.1	6.8
	May	133.2	8.3	140.2	7.2
	Jun	135.0	8.1	141.0	6.9
	July	136.6	7.6	141.5	6.1
	Aug	135.4	7.2	142.0	6.3
	Sept	136.8	7.4	142.7	6.5
	Oct	137.2	7.6	143.1	6.8
	Nov	137.9	7.6	143.6	6.7
	Dec	137.5	7.7	144.2	7.1
2011					
	Jan	139.6	8.0	145.5	7.6
	Feb	142.1	8.6	146.0	7.7
	Mar	142.6	8.4	147.1	7.6
	Apr	143.4	8.0	149.4	7.4
	May	148.7	8.2	150.5	7.3
	Jun	148.8	7.6	151.4	7.4
	July	150.3	7.4	151.9	7.3
	Aug	153.7	8.4	152.5	7.4
	Sept	154.8	8.1	153.2	7.4
	Oct	155.6	8.3	154.0	7.6
	Nov	156.3	8.5	154.4	7.5
	Dec	156.9	8.5	155.1	7.5
2012					
	Jan	157.9	8.1	156.0	7.2
	Feb	158.0	7.8	156.5	7.2
	Mar	159.2	7.6	157.4	7.0
	Apr	158.9	7.3	159.2	6.6
	May	160.7	7.3	160.2	6.5
	Jun	163.9	6.8	161.2	6.4
	Jul	164.5	6.8	161.8	6.5
	Aug	164.0	6.3	162.5	6.6
	Sept	165.6	6.5	163.2	6.5

Prices Collection Coverage for Botswana Consumer Price Index (CPI) - 2012

