

Consumer Price Index

March 2020

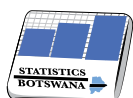


Private Bag 47
Maun
Tel: 371 5716
Fax: 686 4327

Private Bag 32
Ghanzi
Tel: 371 5723
Fax: 659 7506

Private Bag F193,
City of Francistown
Tel. 241 5848,
Fax. 241 7540

Private Bag 0024, Gaborone
Tel: 3671300
Fax: 3952201
Toll Free: 0800 600 200



STATISTICS BOTSWANA

E-mail: info@statsbots.org.bw
Website: <http://www.statsbots.org.bw>

Contact Statistician:
Phaladi Labobedi

CONTENTS

SECTION 1: HEADLINE INFLATION	1
SECTION 2: CORE INFLATION	1
GLOSSARY	12

CHARTS

CHART 1: NATIONAL RATES OF INFLATION	2
CHART 2: MONTHLY CHANGES IN THE CONSUMER PRICE INDEX	2
CHART 3: NON-TRADEABLES INFLATION RATES	2
CHART 4: TRADEABLES INFLATION RATES	2
CHART 5: CONTRIBUTIONS OF GROUPS TO ANNUAL INFLATION RATE	3

TABLES

TABLE 1: CONSUMER PRICE INDEX (DECEMBER 2018 =100.0)	4
TABLE 2: NATIONAL CONSUMER PRICE GROUP & SECTION INDICES (DECEMBER 2018 = 100.0)	6
TABLE 3: CONSUMER PRICE INDEX BY TRADABILITY (DECEMBER 2018 = 100.0)	8
TABLE 4: CORE INFLATION RATES BY EXCLUSION AND TRIMMED MEAN	9
TABLE 5: CONTRIBUTIONS OF GROUPS TO ANNUAL INFLATION RATE	10
TABLE 6: AVERAGE ANNUAL INFLATION (DECEMBER 2018 = 100.0)	10

COMMENTARY

SECTION 1: HEADLINE INFLATION

The annual inflation rate in March 2020 was 2.2 percent, the same rate as in February 2020. The main contributors to the March annual inflation rate were; Food & Non-Alcoholic Beverages (0.5 of a percentage point), Miscellaneous Goods & Services (0.5 of a percentage point) and Housing, Water, Electricity, Gas & Other Fuels (0.3 of a percentage point). Refer to [Table 5](#).

The inflation rates for regions between February 2020 and March 2020 indicated that Rural Villages' rate rose from 1.9 percent to 2.0 percent. Cities & Towns and Urban Villages' rates remained constant at 2.3 percent during the period under review. Refer to [Table 1](#).

The national Consumer Price Index was 102.8 in March 2020, recording an increase of 0.1 percent, from 102.7 recorded in February 2020. The Rural Villages moved from 102.1 in February to 102.3 in March, registering a rise of 0.1 percent. The Urban Villages' Index recorded a rise of 0.1 percent over the two months while the Cities & Towns Index remained unchanged at 102.9 over the two periods.

Group indices were generally moving at a steady pace recording changes of less than 0.5 percent. Refer to [Table 2](#).

The Restaurants & Hotels group Index moved from 103.9 in February 2020 to 104.2 in March 2020, recording an increase of 0.3 percent. This was due to a general growth in the constituent section indices.

The Food & Non-Alcoholic Beverages group index rose by 0.2 percent, from 104.2 to 104.4 over the two months under review. This was attributed to a general increase in the constituent section indices, particularly; Fruits (0.8 percent), Vegetables (0.6 percent) and Meat (0.5 percent),

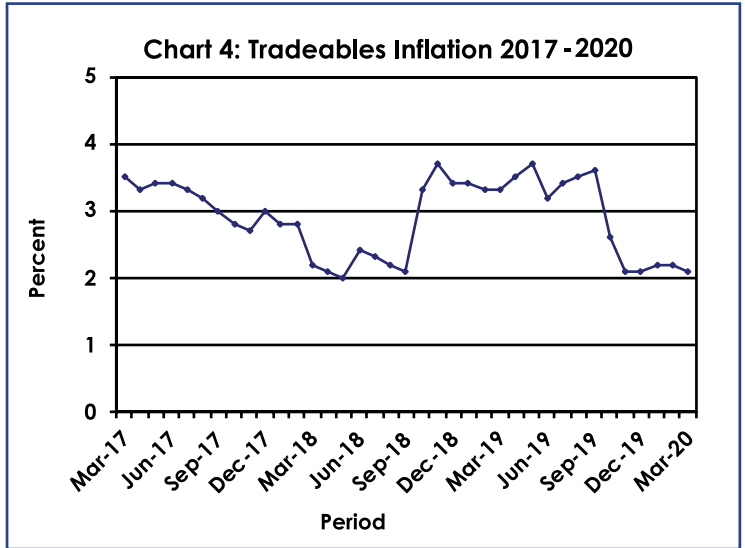
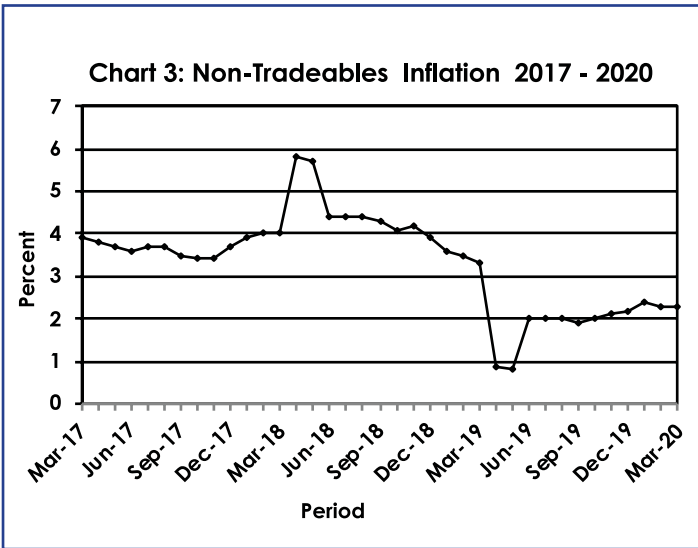
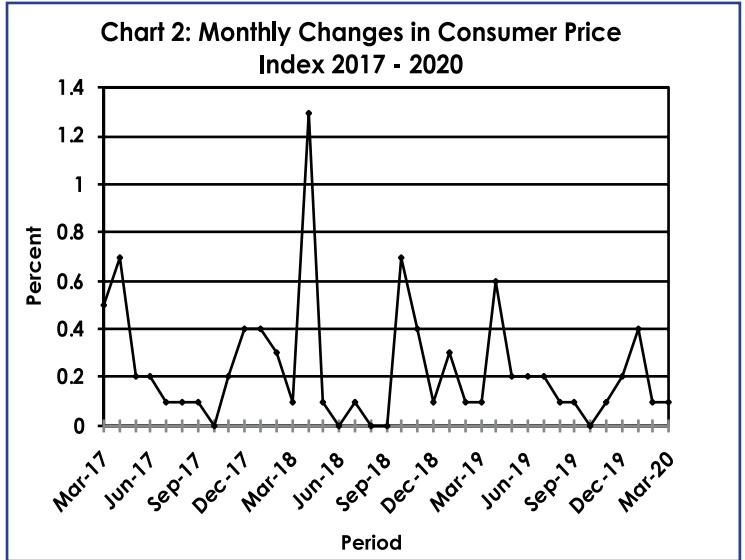
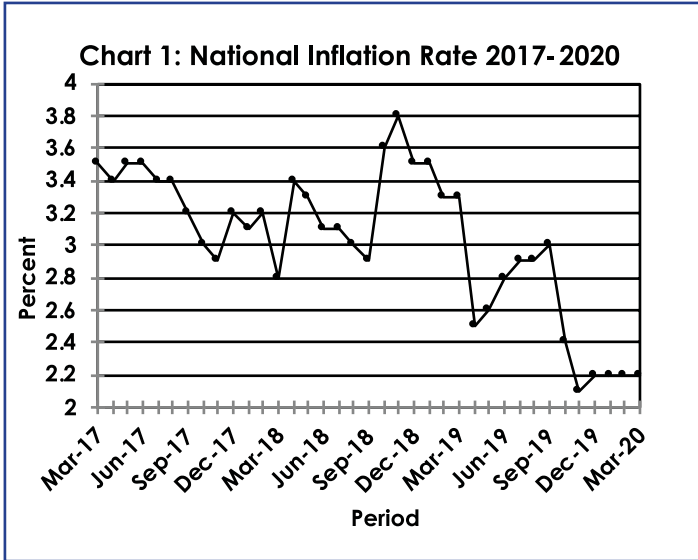
The All-Tradeables index was 102.9 in March 2020, registering a rise of 0.1 percent from 102.8 recorded in February 2020. The Domestic Tradeables Index recorded a growth of 0.2 percent, advancing from 105.4 in February to 105.6 in March 2020. The Non-Tradeables Index realized an increase of 0.1 percent during the period under review. The Imported Tradeables Index was 102.0 in March, the same rate as in February 2020. Refer to [Table 3](#).

All-Tradeables inflation rate stood at 2.1 percent in March 2020, recording a drop of 0.1 of a percentage point from 2.2 percent recorded in February 2020. The Domestic Tradeables inflation rate dropped to 4.2 percent in March from 4.4 percent realised in February. The Non-Tradeables and Imported Tradeables inflation remained constant at 2.3 percent and 1.4 percent respectively over the two periods. Refer to [Table 3](#).

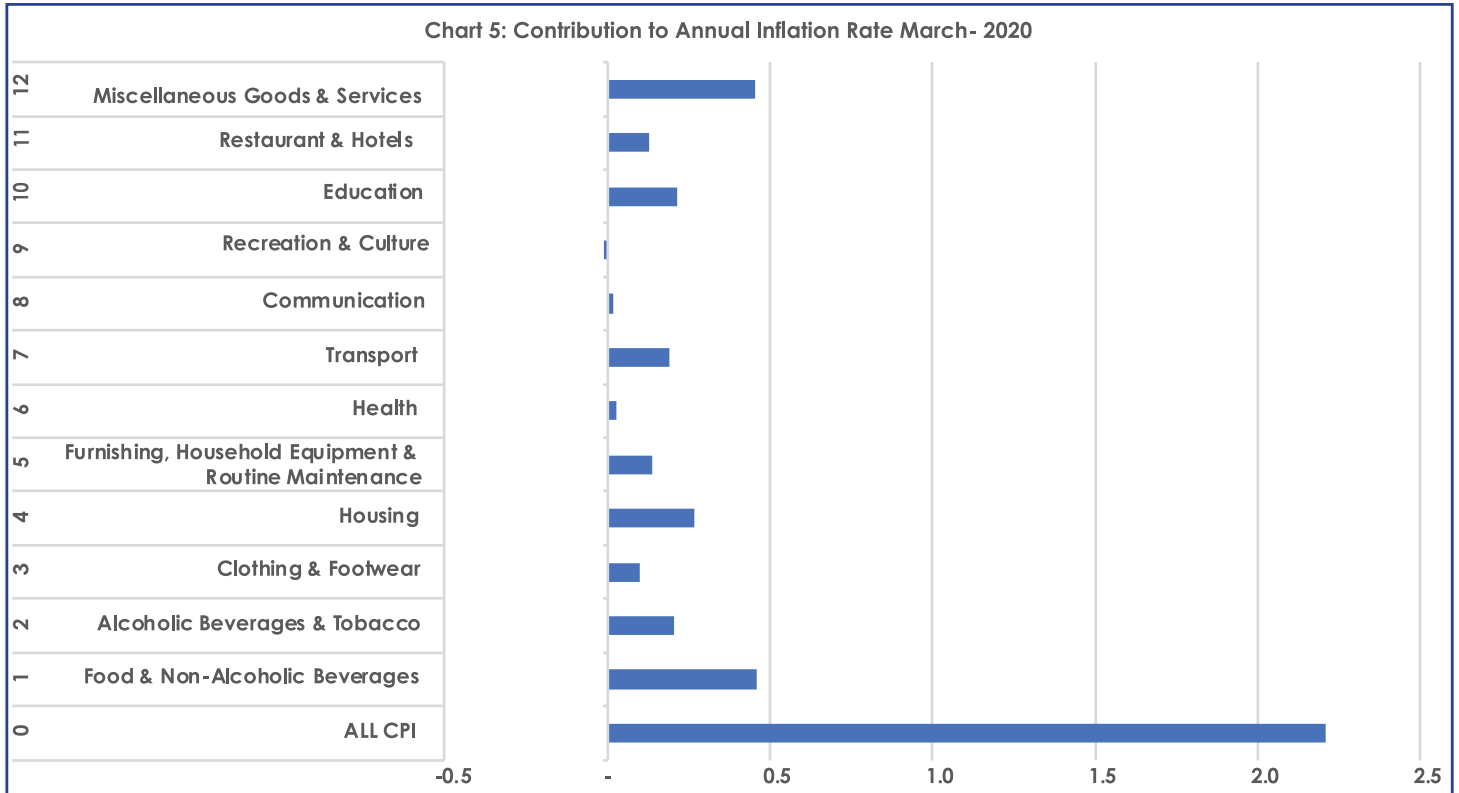
SECTION 2: CORE INFLATION

The Trimmed Mean Core Inflation rate in March 2020 was 1.9 percent, the same rate as in February 2020. The March 2020 Core Inflation rate by exclusion also remained unchanged at 2.7 percent, Refer to [Table 4](#).

CHARTS



Consumer Price Index-March 2020



Dr. Burton S. Mguni
Statistician General
15th April 2020

TABLES

TABLE 1 : CONSUMER PRICE INDEX (DECEMBER 2018 =100.0)

		Food	Alcohol and Tobacco	Clothing and Footwear	Housing	Furniture etc	Health	Transport	Communi-cation	Rec. & Culture	Education	Rest. & Hotels	Miscella-neous
Weights		13.55	4.34	5.95	17.45	4.85	3.38	23.43	6.94	2.82	4.60	3.66	9.01
2017	Jan	100.0	96.8	96.5	91.5	96.1	97.6	86.8	108.9	96.8	94.7	94.2	91.5
	Feb	100.4	97.4	96.8	91.6	96.5	97.7	87.0	108.9	97.2	94.7	94.4	91.7
	Mar	100.9	97.9	97.0	92.0	96.9	97.8	87.9	108.9	97.4	94.7	94.8	92.0
	Apr	101.1	98.5	97.2	95.5	97.0	97.9	88.0	108.9	98.1	94.7	95.0	92.2
	May	101.5	99.0	97.4	95.5	97.2	98.0	88.1	109.0	98.1	94.7	95.3	92.3
	Jun	101.4	99.0	97.5	95.7	97.4	98.6	88.3	109.2	98.2	94.8	95.5	93.2
	Jul	101.6	99.1	97.9	95.8	97.6	98.7	88.3	109.2	98.3	94.8	95.9	93.2
	Aug	101.5	99.2	98.1	95.8	97.7	98.8	88.5	109.2	98.4	94.8	96.2	93.2
	Sept	100.9	99.3	98.3	96.4	97.9	98.8	88.6	110.3	98.3	94.8	96.4	93.3
	Oct	100.8	99.1	98.4	96.3	98.0	98.8	88.6	110.3	98.4	94.9	96.6	93.4
	Nov	100.7	99.0	98.4	96.3	98.1	98.9	89.4	110.3	98.3	94.9	96.6	93.4
	Dec	100.2	99.1	98.5	96.7	97.9	98.9	90.9	110.1	98.5	94.9	97.1	93.9
2018	Jan	100.4	99.1	98.6	96.8	98.1	99.0	91.2	110.2	98.7	99.9	97.4	94.2
	Feb	100.8	99.2	98.7	96.9	98.4	99.1	91.5	110.2	99.0	99.9	97.8	94.7
	Mar	100.9	99.3	98.9	97.2	99.0	99.2	91.4	110.3	99.4	100.0	97.9	94.9
	Apr	101.0	99.2	99.3	98.6	99.1	99.2	93.5	110.3	100.0	100.0	98.4	100.0
	May	100.9	99.5	99.5	98.7	99.2	99.4	93.6	110.3	100.1	100.0	98.6	100.1
	Jun	100.7	99.7	99.6	99.2	99.5	99.4	95.0	100.2	100.1	100.0	99.0	100.2
	Jul	100.5	99.9	99.9	99.2	99.6	99.5	95.1	100.2	100.2	100.0	99.4	100.3
	Aug	100.2	100.1	99.8	99.3	99.6	99.5	95.2	100.2	100.2	100.0	99.5	100.3
	Sept	99.9	100.1	99.8	99.7	100.0	99.7	95.0	100.2	100.2	100.0	99.7	100.2
	Oct	99.8	100.2	99.7	99.7	100.0	99.8	98.4	100.2	99.8	100.0	99.7	99.8
	Nov	99.9	100.2	99.8	99.9	100.1	99.9	99.8	100.2	99.9	100.0	99.7	99.8
	Dec	100.0	100.0	100.0	100.0	100.0	100.0	100.0	100.0	100.0	100.0	100.0	100.0
2019	Jan	100.4	99.8	100.2	100.1	100.2	100.1	100.3	100.0	100.1	103.0	100.0	100.3
	Feb	100.6	99.6	100.2	100.1	100.4	100.2	100.6	100.0	100.1	103.1	100.1	100.6
	Mar	101.0	99.9	100.3	100.3	100.6	100.3	100.5	100.0	100.4	103.1	100.6	100.4
	Apr	101.4	101.2	100.4	100.3	100.7	100.3	100.7	100.0	100.2	103.1	100.8	104.9
	May	102.0	102.4	100.5	100.4	100.8	100.4	100.8	100.0	100.2	103.1	101.1	104.9
	Jun	102.0	103.2	100.7	100.9	101.6	100.5	100.6	100.1	100.2	103.1	101.3	105.0
	Jul	102.1	103.5	100.8	101.0	101.8	100.6	100.9	100.1	100.3	103.1	101.6	105.4
	Aug	102.1	103.6	101.0	101.1	101.8	100.7	101.0	100.2	100.3	103.1	101.8	105.3
	Sept	102.4	103.8	101.0	101.2	102.1	100.6	100.9	100.2	100.3	103.1	102.1	105.3
	Oct	102.3	104.1	101.1	101.3	102.2	100.7	101.0	100.3	100.0	103.1	102.3	105.2
	Nov	102.5	104.2	101.3	101.3	102.4	100.8	101.2	100.4	100.0	103.1	102.4	105.3
	Dec	103.0	104.4	101.3	101.5	102.7	100.8	101.3	100.4	99.8	103.1	102.9	105.3
2020	Jan	103.7	104.5	101.7	101.6	103.0	101.0	101.3	100.4	99.8	107.9	103.7	105.5
	Feb	104.2	104.6	101.8	101.7	103.3	101.0	101.4	100.3	100.0	108.0	103.9	105.6
	Mar	104.4	104.7	102.0	101.9	103.5	101.1	101.3	100.3	100.0	108.0	104.2	105.4
% Change on													
Last month		0.2	0.0	0.2	0.2	0.2	0.1	(0.0)	(0.0)	0.1	0.0	0.3	(0.2)

Consumer Price Index-March 2020

TABLE 1: CONSUMER PRICE INDEX (Cont.)

		All Items Index	National Inflation Rate	Monthly Change	Towns & Cities Index	Urban Village Index	Rural Villages Index	Annual Inflation		
								Towns & Cities	Urban Villages	Rural
		100.0	%	%	0.38	0.41	0.21	%	%	%
2017	Jan	94.0	3.1	0.4	93.1	94.3	95.1	3.1	2.8	3.6
	Feb	94.2	3.4	0.2	93.3	94.6	95.5	3.5	2.9	3.8
	Mar	94.7	3.5	0.5	93.8	95.0	95.9	3.6	3.0	4.2
	Apr	95.4	3.4	0.7	94.4	95.8	96.5	3.3	3.0	4.2
	May	95.6	3.5	0.2	94.6	96.0	96.8	3.4	3.1	4.1
	Jun	95.8	3.5	0.2	94.8	96.2	96.8	3.4	3.3	3.9
	Jul	95.9	3.4	0.1	95.0	96.3	97.0	3.5	3.2	3.7
	Aug	96.0	3.4	0.1	95.0	96.4	97.1	3.4	3.2	3.6
	Sept	96.1	3.2	0.1	95.2	96.3	97.2	3.2	3.0	3.4
	Oct	96.1	3.0	0.0	95.2	96.2	97.3	3.0	2.7	3.3
	Nov	96.2	2.9	0.2	95.5	96.4	97.4	3.1	2.6	3.0
	Dec	96.6	3.2	0.4	96.0	96.6	97.6	3.6	2.9	3.1
2018	Jan	97.0	3.1	0.4	96.4	97.0	97.8	3.6	2.9	2.8
	Feb	97.2	3.2	0.3	96.7	97.3	98.1	3.6	2.9	2.7
	Mar	97.4	2.8	0.1	96.8	97.5	98.1	3.3	2.6	2.3
	Apr	98.7	3.4	1.3	98.4	98.7	99.1	4.2	3.1	2.7
	May	98.7	3.3	0.1	98.5	98.8	99.1	4.1	3.0	2.5
	Jun	98.8	3.1	0.0	98.6	98.8	99.0	4.0	2.7	2.3
	Jul	98.8	3.1	0.1	98.7	98.9	99.1	3.9	2.7	2.1
	Aug	98.8	3.0	(0.0)	98.6	98.9	99.1	3.8	2.6	2.0
	Sept	98.9	2.9	0.0	98.7	98.9	99.1	3.6	2.7	2.0
	Oct	99.5	3.6	0.7	99.5	99.5	99.7	4.4	3.4	2.5
	Nov	99.9	3.8	0.4	99.9	99.8	100.0	4.7	3.6	2.6
	Dec	100.0	3.5	0.1	100.0	100.0	100.0	4.2	3.5	2.5
2019	Jan	100.3	3.5	0.3	100.4	100.3	100.2	4.1	3.4	2.4
	Feb	100.5	3.3	0.1	100.6	100.5	100.3	4.0	3.2	2.3
	Mar	100.6	3.3	0.1	100.6	100.6	100.3	3.9	3.2	2.2
	Apr	101.2	2.5	0.6	101.2	101.3	100.8	2.9	2.6	1.7
	May	101.3	2.6	0.2	101.4	101.5	100.9	2.9	2.7	1.8
	Jun	101.5	2.8	0.2	101.6	101.6	101.1	3.0	2.9	2.1
	Jul	101.7	2.9	0.2	101.8	101.8	101.2	3.1	3.0	2.1
	Aug	101.7	2.9	0.1	101.8	101.9	101.3	3.2	3.1	2.2
	Sept	101.8	3.0	0.1	101.9	102.0	101.4	3.2	3.1	2.3
	Oct	101.9	2.4	0.0	102.0	102.0	101.4	2.5	2.5	1.8
	Nov	102.0	2.1	0.1	102.1	102.1	101.5	2.2	2.3	1.5
	Dec	102.2	2.2	0.2	102.3	102.3	101.6	2.3	2.3	1.6
2020	Jan	102.6	2.2	0.4	102.8	102.6	102.0	2.4	2.3	1.8
	Feb	102.7	2.2	0.1	102.9	102.8	102.1	2.3	2.3	1.9
	Mar	102.8	2.2	0.1	102.9	102.9	102.3	2.3	2.3	2.0
% Change on last month		0.1			0.0	0.1	0.1			

TABLE 2: NATIONAL CONSUMER PRICE GROUP AND SECTION INDICES (DECEMBER 2018=100.0)

	Group Section	Weights	This month Mar 2020	Last month Feb 2020	3 months ago Dec 2019	6 months ago Sep 2019	12 months ago Mar 2019	Percentage Change on:			
								Last month	3 months ago	6 months ago	12 months ago
1	Food & Non-Alcoholic Beverages	13.55	104.4	104.2	103.0	102.4	101.0	0.2	1.4	2.0	3.4
1.1	Bread & Cereals	4.26	104.9	104.8	104.1	103.6	100.8	0.1	0.8	1.3	4.1
1.2	Meat (Fresh, Chilled & Frozen)	2.36	109.0	108.5	105.7	102.4	101.3	0.5	3.2	6.5	7.7
1.3	Fish (Fresh, Chilled & Frozen)	0.18	105.4	105.6	104.7	103.9	100.4	(0.2)	0.7	1.4	5.0
1.4	Milk, Cheese & Milk Products	0.98	102.4	102.3	101.5	102.2	100.3	0.1	0.8	0.2	2.1
1.5	Oils & Fats	0.92	101.0	101.0	100.7	100.3	99.9	0.0	0.3	0.7	1.1
1.6	Fruits	0.78	106.4	105.6	103.0	101.8	102.8	0.8	3.3	4.5	3.5
1.7	Vegetables	1.08	103.7	103.1	101.8	103.5	102.2	0.6	1.9	0.2	1.5
1.8	Sugar, Jam, Honey, Chocolate & Confectionery	1.11	98.8	98.8	98.2	98.5	100.0	0.0	0.5	0.3	(1.2)
1.9	Food Not Elsewhere Classified	0.54	103.9	104.0	103.2	103.6	101.7	(0.1)	0.7	0.3	2.2
1.10	Coffee, Tea & Cocoa	0.73	102.4	102.3	101.6	101.5	100.9	0.1	0.8	0.9	1.5
1.11	Mineral Waters, Soft Drinks, Fruits & Vegetables Juices	0.62	103.1	103.1	102.4	102.6	101.5	(0.0)	0.7	0.5	1.6
2	Alcoholic Beverages & Tobacco	4.34	104.7	104.6	104.4	103.8	99.9	0.0	0.2	0.9	4.8
2.1	Alcoholic Beverages	3.51	104.7	104.7	104.5	103.8	99.5	(0.0)	0.1	0.8	5.1
2.2	Tobacco	0.82	104.7	104.4	104.0	103.6	101.3	0.3	0.6	1.1	3.3
3	Clothing & Footwear	5.95	102.0	101.8	101.3	101.0	100.3	0.2	0.7	1.0	1.7
3.1	Clothing	2.60	102.5	102.2	102.1	101.4	100.3	0.2	0.4	1.0	2.2
3.2	Other Articles of Clothing	0.72	101.8	101.7	101.0	100.9	100.4	0.1	0.8	0.9	1.4
3.3	Cleaning, Repair & Hire	0.61	103.0	103.0	101.2	101.2	100.3	0.0	1.8	1.8	2.7
3.4	Footwear	2.03	101.2	100.9	100.4	100.4	100.3	0.2	0.7	0.7	0.9
4	Housing, Water, Electricity, Gas & Other Fuels	17.45	101.9	101.7	101.5	101.2	100.3	0.2	0.3	0.6	1.5
4.1	Rent Paid by Tenants	7.78	103.0	102.5	102.5	101.9	100.4	0.5	0.5	1.1	2.7
4.2	Materials for Maintenance & Repair of Dwellings	3.83	102.2	102.3	101.8	101.8	100.8	(0.1)	0.4	0.4	1.4
4.3	Water Supply & Miscellaneous Services	1.96	100.0	100.0	100.0	100.0	100.0	0.0	0.0	0.0	0.0
4.4	Electricity, Gas & Other Fuels	3.89	100.1	100.1	100.0	100.0	99.9	0.0	0.0	0.0	0.1
5	Furnishing, H/H Equipment & Routine Maintenance	4.85	103.5	103.3	102.7	102.1	100.6	0.2	0.8	1.4	2.9
5.1	Furniture & Furnishing	1.35	103.1	102.9	101.9	101.5	100.4	0.2	1.2	1.6	2.7
5.2	Carpets & Other Floor Coverings	0.27	102.2	101.9	101.4	101.0	100.3	0.3	0.8	1.3	1.9
5.3	Household Textiles	0.29	102.6	102.6	101.8	101.2	100.1	0.0	0.8	1.4	2.5
5.4	Household Appliances	0.72	100.7	100.5	100.1	99.9	100.3	0.3	0.6	0.8	0.4
5.5	Glassware, Tableware & Household Utensils	0.23	103.5	103.4	103.0	102.1	100.3	0.1	0.5	1.3	3.2
5.6	Small Tools, Miscellaneous Accessories	0.04	103.0	102.9	102.8	102.3	101.1	0.1	0.2	0.7	1.9
5.7	Goods & Services for Household Maintenance	1.95	105.1	105.0	104.5	103.7	101.1	0.1	0.6	1.4	4.0
6	Health	3.38	101.1	101.0	100.8	100.6	100.3	0.1	0.3	0.5	0.9
6.1	Medical Products, Applications & Equipments	0.98	102.6	102.3	101.8	101.4	100.8	0.3	0.7	1.1	1.8
6.2	Out-Patient Services	0.93	101.4	101.2	101.0	100.8	100.1	0.2	0.4	0.5	1.3
6.3	Hospital Services	1.47	100.0	100.0	100.0	100.0	100.0	0.0	0.0	0.0	0.0

TABLE 2: NATIONAL CONSUMER PRICE GROUP AND SECTION INDICES (DECEMBER 2018=100.0) (Cont.)

	Group Section	Weights	This month Mar 2020	Last month Feb 2020	3 months ago Dec 2019	6 months ago Sep 2019	12 months ago Mar 2019	Percentage Change on:			
								Last month	3 months ago	6 months ago	12 months ago
7	Transport	23.43	101.3	101.4	101.3	100.9	100.5	(0.0)	0.0	0.4	0.8
7.1	Purchase of Vehicles	5.74	104.2	104.4	104.3	102.8	101.8	(0.3)	(0.2)	1.3	2.3
7.2	Operation of Personal Transport	12.56	100.5	100.4	100.4	100.4	100.1	0.0	0.1	0.1	0.4
7.3	Transport Services	5.13	100.1	100.1	100.1	100.1	100.0	0.0	0.0	0.0	0.1
8	Communication	6.94	100.3	100.3	100.4	100.2	100.0	(0.0)	(0.1)	0.1	0.3
8.1	Postal Services	0.21	100.0	100.0	100.0	100.0	100.0	0.0	0.0	0.0	0.0
8.2	Telephone & Telefax Equipment	1.13	101.7	102.0	102.2	101.4	100.0	(0.2)	(0.5)	0.3	1.7
8.3	Telephone & Telefax Services	5.60	100.0	100.0	100.0	100.0	100.0	0.0	0.0	0.0	0.0
9	Recreation & Culture	2.82	100.0	100.0	99.8	100.3	100.4	0.1	0.2	(0.2)	(0.3)
9.1	Audio Visual, Photographic & Information Processing Equipment	2.10	99.5	99.4	99.3	100.0	100.4	0.1	0.2	(0.5)	(0.9)
9.2	Other Recreational Items & Equipments	0.30	102.0	101.9	101.5	101.1	100.6	0.1	0.5	0.9	1.4
9.3	Recreational & Cultural Services	0.31	99.9	99.9	99.8	99.8	100.0	0.0	0.1	0.1	(0.1)
9.4	Newspapers, Books & Stationary	0.11	105.2	105.1	105.1	104.8	100.2	0.1	0.0	0.3	5.0
10	Education	4.60	108.0	108.0	103.1	103.1	103.1	0.0	4.7	4.7	4.7
10.1	Pre-Primary & Primary Education	1.89	108.3	108.3	103.4	103.4	103.3	0.0	4.8	4.8	4.8
10.2	Secondary & Tertiary Education	2.70	107.7	107.7	103.0	103.0	102.9	0.0	4.6	4.6	4.7
11	Restaurants & Hotels	3.66	104.2	103.9	102.9	102.1	100.6	0.3	1.2	2.1	3.6
11.1	Restaurants, Cafes & the Like	3.02	104.3	104.0	102.9	102.0	100.7	0.2	1.3	2.2	3.6
11.2	Accommodation Services	0.64	103.9	103.5	102.9	102.2	100.4	0.3	0.9	1.6	3.5
12	Miscellaneous Goods & Services	9.01	105.4	105.6	105.3	105.3	100.4	(0.2)	0.1	0.1	5.1
12.1	Personal Care	2.33	101.5	101.3	100.7	101.0	100.6	0.1	0.8	0.5	0.9
12.2	Personal Effects Not Elsewhere Classified	0.22	100.7	100.6	100.2	100.2	100.1	0.2	0.5	0.5	0.6
12.3	Social Protection	0.13	108.2	108.2	101.6	101.6	101.6	0.0	6.6	6.6	6.6
12.4	Insurance	3.62	110.8	111.5	112.1	112.1	100.4	(0.6)	(1.2)	(1.2)	10.4
12.5	Financial Services	1.09	101.5	101.4	101.1	101.0	100.3	0.1	0.4	0.5	1.2
12.6	Taxes, Licences & Fees	1.61	102.2	102.0	100.7	100.4	100.0	0.3	1.6	1.8	2.2
	All-Items Index	100.0	102.8	102.7	102.2	101.8	100.6	0.1	0.6	0.9	2.2

Consumer Price Index-March 2020

TABLE 3: CONSUMER PRICE INDEX BY TRADEABILITY (DECEMBER 2018 = 100.0)

	All Items		Non-Tradable		Domestic Tradable		Imported Tradable		All Tradable		
	Index	Inflation	Index	Inflation	Index	Inflation	Index	Inflation	Index	Inflation	
Weights	100.00		42.29		15.46		42.26		57.71		
2017	Jan	94.0	3.1	93.1	4.3	98.8	4.3	92.6	1.7	94.5	2.6
	Feb	94.2	3.4	93.2	4.3	99.3	4.3	92.9	2.4	94.8	3.1
	Mar	94.7	3.5	93.4	3.9	99.7	4.6	93.6	2.9	95.4	3.5
	Apr	95.4	3.4	94.9	3.8	100.0	4.3	93.8	2.7	95.7	3.3
	May	95.6	3.5	95.0	3.7	100.2	4.3	94.0	2.9	95.9	3.4
	Jun	95.8	3.5	95.4	3.6	100.1	4.2	94.2	2.9	96.0	3.4
	Jul	95.9	3.4	95.6	3.7	99.9	3.8	94.4	3.0	96.1	3.3
	Aug	96.0	3.4	95.6	3.7	99.8	3.4	94.6	3.1	96.2	3.2
	Sept	96.1	3.2	95.9	3.5	99.2	2.6	94.7	3.1	96.1	3.0
	Oct	96.1	3.0	96.0	3.4	99.1	2.2	94.8	3.0	96.1	2.8
	Nov	96.2	2.9	95.9	3.4	98.9	1.6	95.2	3.1	96.4	2.7
	Dec	96.6	3.2	96.3	3.7	98.9	1.3	95.8	3.7	96.8	3.0
2018	Jan	97.0	3.1	96.7	3.9	99.3	0.5	96.1	3.8	97.1	2.8
	Feb	97.2	3.2	96.9	4.0	99.6	0.3	96.4	3.8	97.4	2.8
	Mar	97.4	2.8	97.1	4.0	99.8	0.1	96.5	3.1	97.5	2.2
	Apr	98.7	3.4	100.4	5.8	99.9	-0.1	96.7	3.1	97.7	2.1
	May	98.7	3.3	100.5	5.7	100.0	-0.2	96.8	3.0	97.7	2.0
	Jun	98.8	3.1	99.7	4.4	99.9	-0.2	97.5	3.6	98.2	2.4
	Jul	98.8	3.1	99.8	4.4	99.9	-0.1	97.6	3.4	98.3	2.3
	Aug	98.8	3.0	99.8	4.4	99.8	0.0	97.6	3.2	98.3	2.2
	Sept	98.9	2.9	100.0	4.3	99.8	0.6	97.5	2.9	98.2	2.1
	Oct	99.5	3.6	99.9	4.1	99.7	0.7	99.1	4.5	99.3	3.3
	Nov	99.9	3.8	99.9	4.2	99.9	1.0	99.9	4.9	99.9	3.7
	Dec	100.0	3.5	100.0	3.9	100.0	1.1	100.0	4.4	100.0	3.4
2019	Jan	100.3	3.5	100.2	3.6	100.8	1.5	100.3	4.4	100.4	3.4
	Feb	100.5	3.3	100.2	3.5	100.9	1.4	100.5	4.2	100.6	3.3
	Mar	100.6	3.3	100.3	3.3	101.3	1.5	100.6	4.2	100.7	3.3
	Apr	101.2	2.5	101.3	0.9	101.8	1.9	100.8	4.3	101.1	3.5
	May	101.3	2.6	101.3	0.8	102.3	2.4	101.0	4.4	101.4	3.7
	Jun	101.5	2.8	101.6	2.0	102.5	2.6	101.0	3.6	101.4	3.2
	Jul	101.7	2.9	101.8	2.0	102.7	2.9	101.2	3.7	101.6	3.4
	Aug	101.7	2.9	101.8	2.0	103.0	3.2	101.3	3.7	101.7	3.5
	Sept	101.8	3.0	101.9	1.9	103.2	3.4	101.2	3.9	101.7	3.6
	Oct	101.9	2.4	101.9	2.0	103.3	3.5	101.3	2.3	101.8	2.6
	Nov	102.0	2.1	102.0	2.1	103.4	3.5	101.5	1.6	102.0	2.1
	Dec	102.2	2.2	102.2	2.2	103.7	3.7	101.6	1.6	102.1	2.1
2020	Jan	102.6	2.2	102.5	2.4	105.0	4.2	101.8	1.5	102.6	2.2
	Feb	102.7	2.2	102.6	2.3	105.4	4.4	102.0	1.4	102.8	2.2
	Mar	102.8	2.2	102.6	2.3	105.6	4.2	102.0	1.4	102.9	2.1
% Change on last month		0.1		0.1		0.2		0.0		0.1	

Consumer Price Index-March 2020

TABLE 4: CORE INFLATION RATES BY EXCLUSION AND TRIMMED MEAN

Year	Month	Consumer Price Index (Trimmed Mean) (September 2016 = 100)	Core Monthly Inflation Rate (Trimmed Mean) (percentage)	Consumer Price Index (Excluding Administered Prices) (September 2016 = 100)	Core Monthly Inflation (Excluding Administered Prices) (percentage)
2017	Jan	93.5	2.7	96.6	3.9
	Feb	93.7	2.9	96.9	3.9
	Mar	94.2	3.1	97.2	3.9
	Apr	94.4	3.1	97.5	3.3
	May	94.5	3.1	97.7	3.4
	Jun	94.8	2.9	97.9	3.3
	Jul	94.9	2.9	98.1	3.3
	Aug	95.0	2.9	98.2	3.3
	Sept	95.1	2.7	98.2	3.0
	Oct	95.2	2.6	98.2	2.8
	Nov	95.4	2.5	98.2	2.4
	Dec	95.8	2.9	98.2	2.3
2018	Jan	96.1	2.8	98.7	2.2
	Feb	96.4	2.9	99.0	2.2
	Mar	96.6	2.6	99.2	2.0
	Apr	97.6	3.1	99.4	1.9
	May	97.7	3.0	99.5	1.8
	Jun	98.6	3.2	99.6	1.8
	Jul	98.7	3.1	99.7	1.7
	Aug	98.7	3.0	99.7	1.6
	Sept	98.8	2.9	99.8	1.6
	Oct	99.5	3.7	99.8	1.6
	Nov	99.6	3.8	99.9	1.7
	Dec	100.0	3.6	100.0	1.8
2019	Jan	100.4	3.6	100.4	1.8
	Feb	100.5	3.5	100.6	1.6
	Mar	100.6	3.5	100.8	1.6
	Apr	101.3	2.6	101.0	1.7
	May	101.5	2.7	101.4	1.9
	Jun	101.2	2.5	101.6	2.0
	Jul	101.5	2.6	101.8	2.1
	Aug	101.5	2.7	101.9	2.2
	Sept	101.6	2.7	102.1	2.3
	Oct	101.6	2.1	102.1	2.3
	Nov	101.7	1.7	102.3	2.4
	Dec	101.8	1.8	102.5	2.5
2020	Jan	102.2	1.9	103.2	2.7
	Feb	102.4	1.9	103.4	2.7
	Mar	102.5	1.9	103.5	2.7

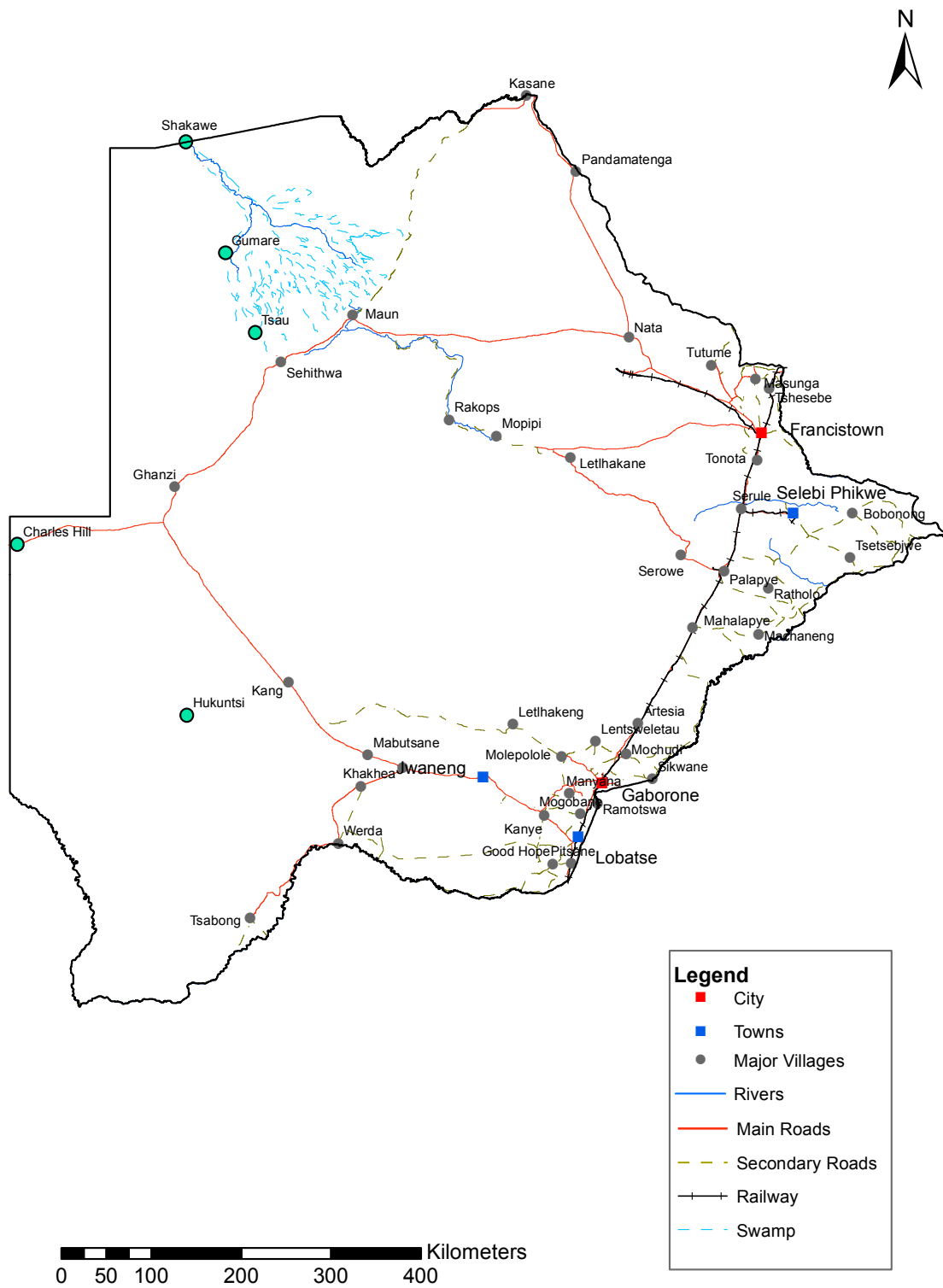
Table 5: Contributions of Groups to Annual Inflation Rate

Group Code	Group Name	CONTRIBUTIONS	
		Feb-20	Mar-20
0	All Items CPI Rate	2.2	2.2
1	Food & Non-Alcoholic Beverages	0.5	0.5
2	Alcoholic Beverages & Tobacco	0.2	0.2
3	Clothing & Footwear	0.1	0.1
4	Housing, Water, Electricity, Gas & Other Fuels	0.3	0.3
5	Furnishing, Household Equipment & Routine Maintenance	0.1	0.1
6	Health	0.0	0.0
7	Transport	0.2	0.2
8	Communication	0.0	0.0
9	Recreation & Culture	0.0	-0.0
10	Education	0.2	0.2
11	Restaurants & Hotels	0.1	0.1
12	Miscellaneous Goods & Services	0.5	0.5

Table 6: Average Annual Inflation (December 2018=100)

Group	Weights	2009	2010	2011	2012	2013	2014	2015	2016	2017	2018	2019
1 Food & Non-Alcoholic Beverages	13.55	14.7	3.6	6.9	8.0	5.4	3.0	1.3	2.7	3.4	(0.5)	1.4
2 Alcoholic Beverages & Tobacco	4.34	35.2	7.1	8.4	7.6	10.3	9.0	6.1	2.5	4.5	1.1	2.8
3 Clothing & Footwear	5.95	8.4	8.0	8.9	7.5	6.3	6.0	7.6	6.5	3.2	1.8	1.3
4 Housing, Water, Electr. Gas & Other Fuels	17.45	4.8	6.4	8.4	7.7	4.3	3.9	7.1	6.3	5.4	4.1	2.1
5 Furnishing, H/H Equipment & Routine Maintenance	4.85	11.9	9.4	9.0	7.3	4.9	5.0	6.1	3.0	3.3	2.1	2.1
6 Health	3.38	5.5	2.7	4.5	5.9	5.5	8.3	6.3	3.0	2.4	1.1	1.0
7 Transport	23.43	(8.4)	12.1	13.2	10.8	7.3	1.2	(5.1)	(2.7)	1.6	7.5	6.2
8 Communication	6.94	(0.3)	1.2	(3.0)	(1.4)	0.3	0.3	0.3	0.2	0.5	(4.6)	(3.8)
9 Recreation & Culture	2.82	5.0	6.0	8.3	5.8	4.5	4.2	5.7	3.0	2.2	1.8	0.4
10 Education	4.60	3.9	5.8	10.6	6.4	4.7	7.4	6.4	3.7	4.1	5.5	3.1
11 Restaurants & Hotels	3.66	18.8	9.0	9.3	8.4	7.9	7.6	5.5	4.0	3.7	3.4	2.5
12 Miscellaneous Goods & Services	9.01	3.8	7.0	5.3	2.0	1.2	5.2	7.2	7.5	3.9	6.4	5.3
All-Items Index	100.0	8.2	6.9	8.5	7.5	5.9	4.4	3.1	2.8	3.3	3.2	2.8

CPI AREA COVERAGE



Compiled and Prepared by Statistics Botswana, 2016

GLOSSARY

Consumer Price Index (CPI) is an index which measures price changes in goods and services with reference to a base period.

Inflation is a measurement of prices movement of goods and services in a particular country.

Domestic Tradeables refers to the goods and services which a country (Botswana) can export to other countries.

Imported Tradeables represents the goods and services which a country (Botswana) imports from other countries (trading partners).

Non-Tradeables refers to the goods and services which a country cannot either export or import to other countries.

All –Tradeables refers to the total of **Domestic** and **Imported Tradeables**.

Trimmed Mean Core Inflation- attempts to remove 8 percent (by weight) of the commodity sub-groups with the largest price changes at each of the ends of an ordered series of price changes in any given month.

Core inflation by Exclusion is a measure used to remove the volatility inherent in prices that are only adjusted periodically and not always in response to currently prevailing market forces.