



CONSUMER PRICE INDEX

June 2013

STATISTICS BOTSWANA

Copyrights © Statistics Botswana 2013

Contact Statistician:
Phaladi Labobedi

Tel: 76813154

Statistics Botswana: Private Bag 0024 Botswana
Tel: (267) 367 1300, Fax: (267) 395 2201, Email: csobots.@gov.bw Website: www.cso.gov.bw

CONTENTS

COMMENTARY

Section 1: Headline Inflation

Section 2: Core Inflation

CHARTS

- 1. National Rates of Inflation, January 2010 – June 2013**
- 2. Monthly Changes in the Cost-of-Living Index, January 2010 – June 2013**
- 3. Non-Tradable Inflation Rates, January 2010 – June 2013**
- 4. Tradable Inflation Rates, January 2010 - June 2013**

TABLES

- 1. Cost-of-Living Index Series (January 2010 – June 2013)**
- 2. National Cost-of-Living Group and Section Indices**
- 3. Cost-of-Living Index by Tradability (January 2010 – June 2013)**
- 4. Core Inflation Rates**
- 5. Annual Average Inflation Rates 2008-2012**

GLOSSARY

COMMENTARY

Section 1: Headline Inflation

In June 2013, national annual inflation rate was 5.8 percent, a decrease of 0.3 of a percentage point from 6.1 percent recorded in May 2013. The annual rate of 5.8 percent realised in June 2013 was lower than the 7.3 percent recorded during the same month in 2012. The decrease on the overall annual rate came from stable prices of commodities especially major components such as Transport, Food and Non-Alcoholic Beverages, which decreased by 2.5 and 2.8 percentage points respectively. Comparison of inflation rate among regions from May to June, showed that cities and towns' went down to 5.5 from 5.9 percent, rural villages' dropped to 6.6 from 6.9 percent while urban villages' registered 5.8 from 5.9 percent.

The June 2013 national Consumer Price Index was at 169.1, an increase of 0.2 percent on the May 2013 index of 168.7. The rural villages' index advanced from 172.5 to 173.3, recording an increase of 0.5 percent. The Urban villages' index realized a rise of 0.4 percent, from 167.5 to 168.1 between the two months, while the cities and towns' index moved from 168.0 to 168.1 between May and June, registering an increase of 0.1 percent.

Group indices were stable between May and June, recording changes of less than 1.0 percent.

The *Housing, Water, Electricity, Gas & Other Fuels* group index recorded an increase of 0.8 percent, from 152.2 in April to 153.4 in May. This was mainly due to an increase in the constituent section index of *Water Supply & Miscellaneous Services*, which went up by 5.8 percent. The increase in *Water Supply & Miscellaneous Services* section index was attributable to the revised water tariffs, which were effected on the 1st of June 2013.

The *Clothing & Footwear* group index recorded an increase of 0.5 percent from 151.5 in May to 152.3 in June. This is because all section indices recorded an increase as follows *Cleaning, Repair & Hire* (0.8 percent), *Clothing* (0.6 percent), *Footwear* (0.5 percent) and *Other articles of Clothing* (0.3 percent)

The *Furnishing, Household Equipment & Routine Maintenance* group index registered an increase of 0.6 percent from 166.3 in May to 167.4 in June. All section indices recorded increases, notably, *Goods & Services for Household Maintenance* (0.8 percent), *Household Appliances* (0.7 percent), *Furniture & Furnishing* (0.6 percent) and *Small Tools, Miscellaneous Accessories* (0.5 percent).

All-Tradable inflation rate registered a decrease of 0.3 of a percentage point from 6.8 percent in May to 6.5 percent in June. The *Domestic Tradable* inflation went down by 0.6 of a percentage point in June, registering 6.9 percent against 7.5 percent in May, while the *Non-Tradable* inflation rate went down by 0.1 of a percentage point, from 4.3 percent in May to 4.2 percent in June. The *Imported Tradable* inflation rate recorded a drop of 0.1 of a percentage point, from 6.3 percent in May to 6.2 percent in June.

The *All-Tradable index* moved from 176.5 in May to 176.8 in June, recording an increase of 0.2 percent. The *Non-Tradable* index went up by 0.5 percent, from 150.4 in May to 151.1 in June whereas the *Imported Tradable* index moved from 168.9 to 169.5, an increase of 0.4 percent.

Section 2: Core Inflation

The Trimmed Mean Core Inflation rate stood at 5.7 percent in June, a decrease of 0.3 of a percentage point on the May 2013 rate of 6.0 percent. The Core Inflation rate by exclusion went down by 0.4 of a percentage point from 6.1 percent to 5.7 percent between May and June 2013.

Chart 1: National Inflation Rate 2010 - 2013

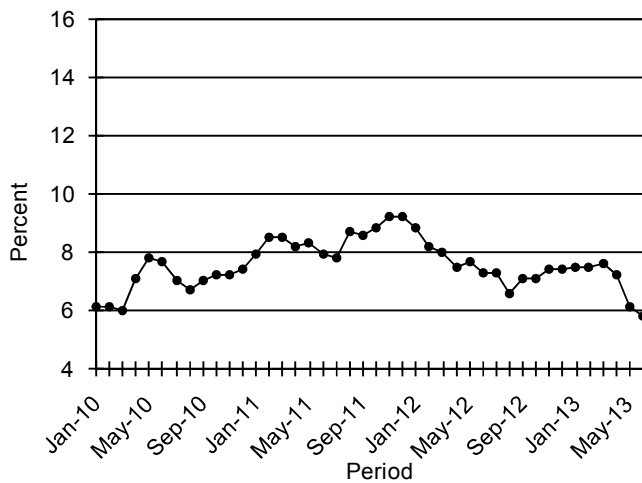


Chart 2: Monthly Changes in Cost-of-Living Index 2010 - 2013

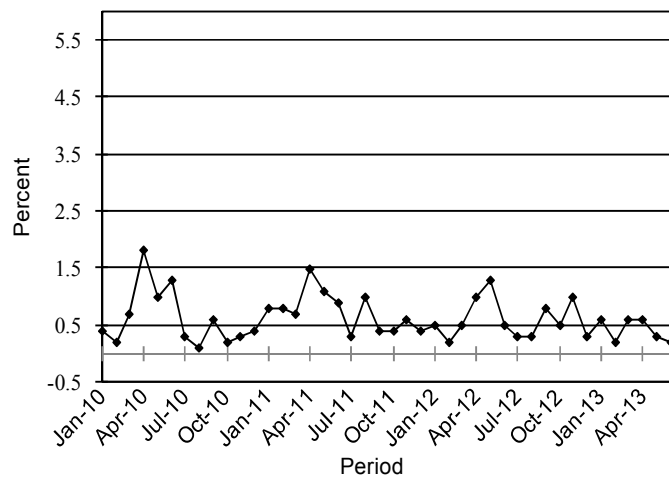


Chart 3: Non-Tradable Inflation 2010 - 2013

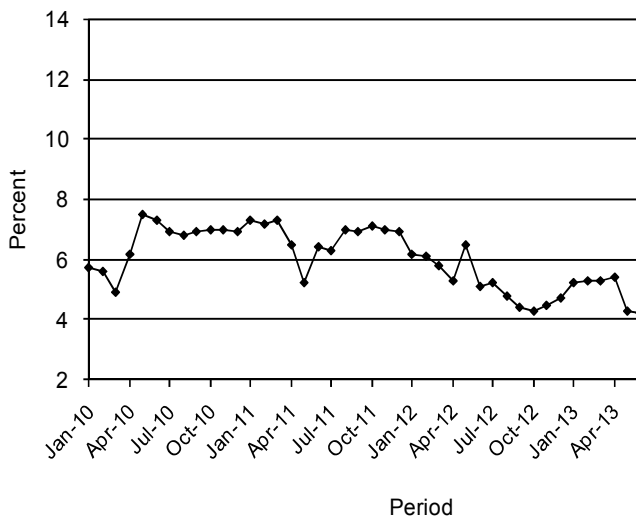
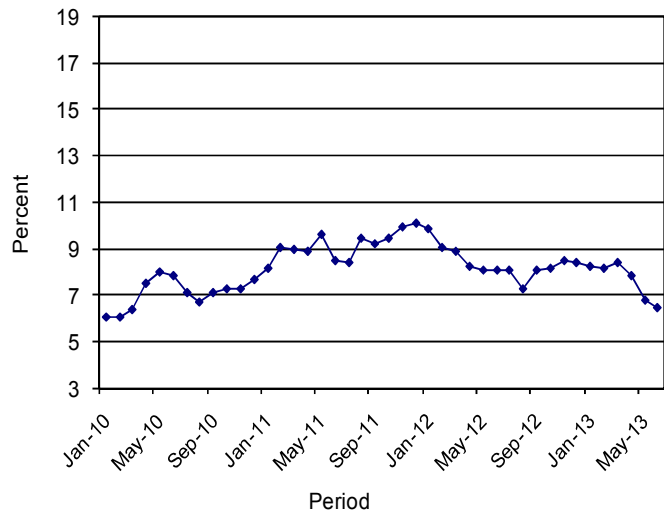


Chart 4: Tradable Inflation 2010 - 2013



A.N. Majelantle
 Statistician General
 12th July 2013

TABLE 1: COST OF LIVING INDEX (September 2006 =100.0)

		Food	Alcohol and Tobacco	Clothing and Footwear	Housing	Furni- ture etc	Health	Trans- port	Commu- nication	Rec. & Culture	Educati- on	Rest. & Hotels	Miscella- neous
Weights (1)	(2)	21.84 (3)	9.29 (4)	7.52 (5)	11.46 (6)	6.76 (7)	2.71 (8)	18.98 (9)	3.01 (10)	2.22 (11)	3.37 (12)	3.27 (13)	9.57 (14)
2010	Jan	151.1	165.8	116.9	119.9	130.6	124.9	120.6	94.6	109.9	120.4	155.6	114.4
	Feb	151.1	166.0	117.3	120.0	131.2	125.2	121.0	94.6	110.3	120.4	156.5	114.6
	Mar	152.4	167.6	118.9	121.2	133.1	125.4	121.2	94.6	110.8	120.4	158.3	115.0
	Apr	154.4	174.1	119.9	121.8	134.3	127.3	123.4	95.4	111.1	120.4	162.7	119.5
	May	156.0	176.7	120.5	126.3	135.0	127.6	123.6	95.4	111.4	120.5	164.4	119.7
	Jun	156.1	177.4	121.4	126.8	137.1	127.8	130.2	96.4	111.5	120.5	165.9	120.8
	July	156.4	177.4	122.9	127.3	138.0	128.1	130.3	96.4	115.6	120.5	166.6	121.0
	Aug	156.8	177.6	123.6	127.5	138.5	128.2	129.6	96.4	115.8	120.5	167.5	121.1
	Sept	156.7	179.1	125.0	127.7	139.3	128.3	131.6	96.4	116.1	120.5	168.8	121.4
	Oct	156.7	179.7	126.3	127.9	139.6	128.4	131.7	96.4	116.5	120.5	170.6	121.5
	Nov	157.2	180.4	127.4	128.1	140.4	128.4	131.8	96.4	116.7	120.5	171.8	121.5
	Dec	157.6	182.1	127.1	128.8	141.7	128.6	132.2	96.4	116.9	120.5	171.9	121.7
2011	Jan	158.2	183.4	127.5	129.1	142.3	128.7	133.7	96.4	117.1	133.2	172.7	122.6
	Feb	159.1	183.9	127.9	129.4	142.9	128.8	137.5	96.4	117.6	133.2	172.9	122.6
	Mar	160.5	186.0	128.5	130.9	144.6	129.1	137.7	96.4	118.5	133.2	173.7	122.8
	Apr	164.4	188.5	131.0	131.1	145.3	133.0	139.0	96.4	123.4	133.2	175.5	125.7
	May	165.8	191.3	132.1	131.8	146.7	133.3	142.8	91.2	124.1	133.2	179.3	126.1
	Jun	166.6	191.9	133.1	137.6	148.9	133.6	143.3	91.2	124.4	133.2	182.5	126.6
	Jul	167.0	192.2	134.4	138.2	149.5	133.6	143.4	91.2	124.5	133.2	183.4	126.7
	Aug	167.9	192.4	135.1	138.9	150.4	133.7	148.7	91.2	124.7	133.2	183.7	126.8
	Sept	168.8	192.4	135.8	140.0	152.9	133.9	148.8	91.2	124.8	133.2	184.5	126.9
	Oct	169.8	192.8	136.4	140.6	153.9	136.0	149.4	91.2	125.3	133.2	184.6	127.1
	Nov	170.7	192.9	137.2	141.2	154.3	136.1	152.6	91.2	125.3	133.2	185.3	127.2
	Dec	171.8	192.8	138.8	141.8	155.2	136.4	152.6	91.2	125.4	133.2	186.0	127.2
2012	Jan	172.3	193.5	139.6	141.9	155.6	136.5	153.4	91.2	125.6	141.5	187.1	127.7
	Feb	173.3	193.6	140.2	142.0	155.9	136.9	153.5	91.2	125.7	141.5	187.5	127.7
	Mar	174.6	196.0	140.7	142.4	156.6	137.2	153.5	91.2	125.9	141.7	189.5	127.7
	Apr	177.0	201.2	140.9	142.4	157.5	141.0	153.8	91.7	130.2	141.7	192.7	128.2
	May	178.4	204.7	141.3	147.4	158.1	141.3	157.8	91.7	130.3	141.7	193.7	128.3
	Jun	179.6	205.2	141.9	148.6	160.1	141.5	158.2	91.7	130.4	141.7	194.9	128.4
	Jul	180.4	205.8	142.5	148.4	160.6	142.1	159.3	91.7	130.9	141.7	195.3	128.6
	Aug	181.0	206.1	144.0	148.4	161.2	142.3	159.9	91.7	131.8	141.7	196.1	128.2
	Sept	181.7	206.9	145.5	148.5	161.9	142.6	164.2	91.7	132.1	141.7	199.3	128.2
	Oct	182.8	210.7	146.0	148.4	162.4	142.7	164.4	91.7	132.3	141.7	201.0	128.3
	Nov	183.4	215.5	146.8	148.5	163.0	142.7	168.2	91.7	132.5	141.7	203.8	128.5
	Dec	184.2	216.3	147.5	148.7	163.5	143.1	169.2	91.7	132.6	141.7	204.1	128.6
2013	Jan	185.2	216.9	148.0	148.8	164.0	146.8	170.0	91.7	132.6	148.4	204.6	129.2
	Feb	186.0	217.2	148.6	148.9	164.5	147.2	170.1	91.7	132.8	148.4	204.9	129.2
	Mar	187.1	222.1	149.1	149.5	165.2	147.4	170.4	91.7	133.0	148.4	205.6	129.3
	Apr	187.7	226.1	150.4	152.2	165.8	147.6	170.5	91.7	135.9	148.4	208.2	129.0
	May	188.3	226.7	151.5	152.2	166.3	147.8	170.7	91.7	136.0	148.4	210.1	129.3
	Jun	188.6	226.9	152.3	153.4	167.4	148.4	170.7	91.7	136.1	148.4	210.6	129.3
% Change on Last month		0.2	0.1	0.5	0.8	0.6	0.5	0.0	0.0	0.1	0.0	0.2	(0.0)

TABLE 1: COST OF LIVING INDEX(Cont.)

	All Items Index	National Inflation Rate %	Monthly Change %	Towns & Cities Index 47.33	Urban Village Index 33.76	Rural Villages Index 18.91	Towns & Cities %	Annual Inflation Urban Villages %	Rural %
2010 Jan	131.4	6.1	0.4	129.8	131.2	135.8	6.7	5.9	5.1
Feb	131.7	6.1	0.2	130.1	131.2	136.4	6.6	5.8	5.4
Mar	132.6	6.0	0.7	131.0	131.8	138.3	6.5	5.2	5.9
Apr	135.0	7.1	1.8	133.5	134.0	140.4	7.9	6.3	6.6
May	136.3	7.8	1.0	134.8	135.4	141.6	8.7	7.2	6.9
Jun	138.1	7.7	1.3	137.0	137.0	142.8	8.5	7.0	7.0
July	138.6	7.0	0.3	137.4	137.6	143.2	7.9	6.4	6.2
Aug	138.7	6.7	0.1	137.8	137.6	142.7	7.7	5.9	5.6
Sept	139.4	7.0	0.6	138.6	138.7	143.0	8.0	6.4	5.6
Oct	139.7	7.2	0.2	138.8	139.1	143.0	8.0	6.8	5.9
Nov	140.1	7.2	0.3	139.5	139.3	143.2	8.2	6.7	5.4
Dec	140.6	7.4	0.4	139.8	139.9	144.0	8.1	7.2	6.2
2011 Jan	141.8	7.9	0.8	141.3	141.0	144.5	8.8	7.5	6.4
Feb	142.9	8.5	0.8	142.4	142.2	145.5	9.5	8.4	6.6
Mar	143.8	8.5	0.7	143.2	143.2	146.6	9.3	8.7	6.0
Apr	146.0	8.2	1.5	145.3	145.5	148.8	8.9	8.5	6.0
May	147.6	8.3	1.1	146.9	146.9	150.5	9.0	8.5	6.2
Jun	149.0	7.9	0.9	148.4	148.1	152.0	8.3	8.1	6.4
Jul	149.3	7.8	0.3	148.9	148.3	152.3	8.4	7.7	6.3
Aug	150.8	8.7	1.0	150.4	149.8	153.4	9.1	8.9	7.5
Sept	151.4	8.6	0.4	150.9	150.6	153.9	8.9	8.6	7.6
Oct	152.0	8.8	0.4	151.4	151.5	154.6	9.0	8.9	8.1
Nov	153.0	9.2	0.6	152.4	152.7	155.0	9.3	9.6	8.2
Dec	153.5	9.2	0.4	152.9	153.1	155.9	9.4	9.4	8.3
2012 Jan	154.3	8.8	0.5	153.5	154.0	157.0	8.6	9.2	8.6
Feb	154.7	8.2	0.2	153.7	154.4	157.6	8.0	8.6	8.3
Mar	155.4	8.0	0.5	154.3	155.1	158.6	7.8	8.3	8.2
Apr	156.9	7.5	1.0	156.0	156.6	159.8	7.3	7.7	7.4
May	159.0	7.7	1.3	158.6	158.2	161.3	8.0	7.7	7.2
Jun	159.8	7.3	0.5	159.3	158.9	162.5	7.4	7.3	6.9
Jul	160.3	7.3	0.3	159.7	159.5	163.2	7.3	7.6	7.1
Aug	160.8	6.6	0.3	160.0	160.2	163.6	6.4	6.9	6.6
Sept	162.1	7.1	0.8	161.9	161.2	164.2	7.2	7.0	6.7
Oct	162.8	7.1	0.5	162.6	161.7	165.3	7.5	6.8	6.9
Nov	164.4	7.4	1.0	164.2	163.1	167.2	7.7	6.8	7.9
Dec	164.9	7.4	0.3	164.3	163.9	168.4	7.5	7.1	8.0
2013 Jan	165.9	7.5	0.6	165.0	164.8	170.0	7.5	7.0	8.3
Feb	166.2	7.5	0.2	165.2	165.0	170.7	7.5	6.9	8.3
Mar	167.1	7.6	0.6	166.0	166.2	171.8	7.5	7.2	8.3
Apr	168.2	7.2	0.6	167.3	167.4	172.1	7.3	6.9	7.7
May	168.7	6.1	0.3	168.0	167.5	172.5	5.9	5.9	6.9
Jun	169.1	5.8	0.2	168.1	168.1	173.3	5.5	5.8	6.6
% Change on last month	0.2			0.1	0.4	0.5			

Table 2: National Cost-of-Living Group & Section Indices (September 2006 = 100.0)

Group Section	Weights	This month	Last month	3 months ago	6 months ago	12 months ago	Percentage Change on:			
		Jun 2013	May 2013	Mar 2013	Dec 2012	Jun 2012	Last month	3 months ago	6 months ago	12 months ago
1 Food & Non-Alcoholic Beverages	21.84	188.6	188.3	187.1	184.2	179.6	0.2	0.8	2.4	5.0
1.1 Bread & Cereals	6.51	185.1	184.8	184.2	182.1	179.3	0.2	0.5	1.7	3.2
1.2 Meat (Fresh, Chilled & Frozen)	3.15	192.5	192.4	191.5	190.4	183.7	0.1	0.5	1.1	4.8
1.3 Fish (Fresh, Chilled & Frozen)	0.20	190.7	189.3	187.0	184.5	177.4	0.8	2.0	3.4	7.5
1.4 Milk, Cheese & Milk Products	2.19	188.7	188.5	187.6	184.9	181.6	0.1	0.6	2.0	3.9
1.5 Oils & Fats	0.90	229.1	229.3	226.9	222.8	214.5	(0.1)	1.0	2.8	6.8
1.6 Fruit	0.67	136.6	134.7	133.7	130.6	125.5	1.4	2.1	4.6	8.8
1.7 Vegetables	1.94	192.1	191.9	189.4	184.6	176.7	0.1	1.4	4.0	8.7
1.8 Sugar, Jam, Honey, Chocolate & Confectionery	1.36	194.0	193.6	192.5	188.4	184.0	0.2	0.8	2.9	5.4
1.9 Food not else where Classified	2.36	188.6	188.3	187.6	184.1	179.5	0.1	0.5	2.4	5.0
1.10 Coffee, Tea & Cocoa	0.63	207.4	205.8	204.9	202.2	199.8	0.8	1.2	2.6	3.8
1.11 Mineral Waters, Soft Drinks, Fruits & Veg. Juices	1.94	179.8	179.6	176.7	172.2	167.8	0.1	1.8	4.4	7.1
2 Alcoholic Beverages, Tobacco & Narcotics	9.29	226.9	226.7	222.1	216.3	205.2	0.1	2.2	4.9	10.6
2.1 Alcoholic Beverages	8.09	228.0	227.8	223.1	216.9	205.2	0.1	2.2	5.1	11.1
2.2 Tobacco	1.20	219.5	219.4	215.9	211.9	205.4	0.0	1.7	3.6	6.8
3 Clothing and Footwear	7.52	152.3	151.5	149.1	147.5	141.9	0.5	2.1	3.3	7.3
3.1 Clothing	3.33	173.6	172.5	168.8	166.6	161.5	0.6	2.8	4.2	7.4
3.2 Other articles of Clothing	1.82	137.2	136.8	135.8	134.0	127.0	0.3	1.0	2.3	8.0
3.3 Cleaning, Repair & Hire	0.03	186.5	185.0	183.7	183.0	175.6	0.8	1.5	1.9	6.2
3.4 Footwear	2.34	133.3	132.5	131.0	130.2	125.0	0.5	1.7	2.3	6.6
4 Housing, Water, Electr. Gas & Other Fuels	11.46	153.4	152.2	149.5	148.7	148.6	0.8	2.6	3.2	3.2
4.1 Rent paid by Tenants	5.68	133.0	132.4	132.4	131.3	130.8	0.4	0.4	1.3	1.6
4.2 Materials for Maintenance & Repair of dwellings	2.57	146.6	146.4	146.2	144.3	142.2	0.2	0.3	1.6	3.1
4.3 Water Supply & Misc. Services	1.14	160.2	151.4	151.4	151.4	151.4	5.8	5.8	5.8	5.8
4.4 Electricity Gas and other Fuels	2.06	214.3	214.2	199.8	200.4	203.9	0.0	7.2	6.9	5.1
5 Furnishing, H/H Equipment & Routine Maintenance	6.76	167.4	166.3	165.2	163.5	160.1	0.6	1.3	2.3	4.5
5.1 Furniture & Furnishing	2.31	141.2	140.4	139.1	137.9	134.5	0.6	1.5	2.4	5.0
5.2 Carpets & Other Floor Coverings	0.04	151.8	151.5	151.1	150.3	147.1	0.2	0.5	1.0	3.2
5.3 Household Textiles	0.44	154.2	153.9	153.1	151.7	148.1	0.2	0.7	1.6	4.1
5.4 Household Appliances	0.69	142.0	141.0	140.0	139.2	135.3	0.7	1.4	2.0	4.9
5.5 Glassware, Tableware & Household Utensils	0.44	177.7	177.2	175.4	173.8	164.4	0.3	1.3	2.2	8.1
5.6 Small Tools, Miscellaneous Accessories	0.06	173.8	173.0	170.9	168.9	166.9	0.5	1.7	2.9	4.1
5.7 Goods & Services for H/hold Maintenance	2.79	195.8	194.3	193.4	191.1	188.7	0.8	1.2	2.5	3.8

**Table 2: National Cost-of-Living Group & Section Indices (September 2006 = 100.0)
(Cont.)**

Group Section	Weights	This	Last	3 months	6 months	12 months	Percentage Change on:			
		month Jun 2013	month May 2013	ago Mar 2013	ago Dec 2012	ago Jun 2012	Last month	3 months ago	6 months ago	12 months ago
6 Health	2.71	148.4	147.8	147.4	143.1	141.5	0.5	0.7	3.7	4.9
6.1 Medical Products, App. & Equip.	0.35	183.5	178.2	175.3	171.1	163.5	3.0	4.7	7.3	12.2
6.2 Out-patient Services	0.66	149.8	149.8	149.8	148.4	145.9	0.0	0.0	0.9	2.7
6.3 Hospital Services	1.71	140.7	140.7	140.7	135.3	135.3	0.0	0.0	4.0	4.0
7 Transport	18.98	170.7	170.7	170.4	169.2	158.2	0.0	0.2	0.9	7.9
7.1 Purchase of Vehicles	5.89	150.9	151.2	151.4	151.4	149.0	(0.2)	(0.3)	(0.3)	1.2
7.2 Operation of Personal Transport	10.92	180.3	180.0	179.4	178.8	162.6	0.2	0.5	0.8	10.8
7.3 Transport Services	2.17	176.5	176.5	176.5	169.0	160.9	0.0	0.0	4.4	9.7
8 Communication	3.01	91.7	91.7	91.7	91.7	91.7	0.0	0.0	0.0	0.0
8.1 Postal Services	0.04	209.9	209.9	209.9	209.9	209.9	0.0	0.0	0.0	0.0
8.2 Telephone & Telefax Equipment	0.74	66.6	66.6	66.6	66.6	66.6	0.0	0.0	0.0	0.0
8.3 Telephone & Telefax Services	2.23	98.0	98.0	98.0	98.0	97.9	0.0	0.0	0.0	0.0
9 Recreation & Culture	2.22	136.1	136.0	133.0	132.6	130.4	0.1	2.3	2.6	4.4
9.1 Audio Visual, Photographic & Info. Proce. Equip.	1.09	106.0	105.9	106.0	105.6	103.7	0.2	0.1	0.4	2.2
9.2 Other Recreational Items & Equip.	0.18	161.4	160.6	160.0	158.5	150.0	0.5	0.9	1.8	7.6
9.3 Recreational & Cultural Services	0.76	156.0	156.0	149.3	149.2	148.4	0.0	4.5	4.6	5.2
9.4 Newspapers, Books & Stationary	0.19	202.7	202.6	195.7	194.3	191.0	0.1	3.6	4.3	6.2
10 Education	3.37	148.4	148.4	148.4	141.7	141.7	0.0	0.0	4.7	4.7
10.1 Pre-Primary & Primary Education	1.10	185.1	185.1	185.1	173.5	173.5	0.0	0.0	6.7	6.7
10.2 Secondary & Tertiary Education	2.26	130.5	130.5	130.5	126.2	126.2	0.0	0.0	3.4	3.4
11 Restaurants & Hotels	3.27	210.6	210.1	205.6	204.1	194.9	0.2	2.4	3.2	8.0
11.1 Restaurants, Cafes and the Like	3.08	213.6	213.1	208.4	206.9	197.4	0.3	2.5	3.3	8.2
11.2 Accommodation Services	0.19	161.3	161.0	160.1	158.9	154.5	0.2	0.8	1.5	4.4
12 Miscellaneous Goods & Services	9.57	129.3	129.3	129.3	128.6	128.4	(0.0)	0.0	0.5	0.7
12.1 Personal Care	0.66	156.3	156.1	154.6	153.7	150.5	0.1	1.1	1.7	3.8
12.2 Personal Effects N.E.C.	0.04	134.6	134.3	133.1	132.1	127.2	0.2	1.1	1.9	5.9
12.3 Social Protection	0.14	160.5	160.5	160.5	147.8	147.8	0.0	0.0	8.6	8.6
12.4 Insurance	6.32	128.2	128.1	128.7	128.9	129.6	0.0	(0.4)	(0.6)	(1.1)
12.5 Financial Services	0.18	145.5	148.7	147.0	145.6	141.3	(2.1)	(1.0)	(0.0)	3.0
12.6 Taxes Licences, Fees	2.24	121.2	121.2	120.0	117.7	116.3	0.0	1.0	3.0	4.2
All-Items Index	100.0	169.1	168.7	167.1	164.9	159.8	0.2	1.2	2.5	5.8

TABLE 3: COST-OF-LIVING INDEX BY TRADABILITY (September 2006 = 100.0)

Weights	All Items		Non-Tradable		Domestic Tradable		Imported Tradable		All Tradable		
	Index	Inflation	Index	Inflation	Index	Inflation	Index	Inflation	Index	Inflation	
	100.00		30.92		23.91		45.17		69.08		
2010	Jan	131.4	6.1	123.8	5.7	149.3	3.0	127.2	8.5	134.6	6.1
	Feb	131.7	6.1	124.0	5.6	149.5	2.2	127.4	9.0	134.9	6.1
	Mar	132.6	6.0	124.6	4.9	150.5	2.0	128.7	9.3	136.0	6.4
	Apr	135.0	7.1	126.9	6.2	153.7	3.5	130.6	10.1	138.3	7.5
	May	136.3	7.8	128.7	7.5	154.9	4.2	131.7	10.4	139.5	8.0
	Jun	138.1	7.7	129.7	7.3	154.8	4.2	135.1	10.3	141.6	7.9
	July	138.6	7.0	129.9	6.9	155.3	3.8	135.7	9.2	142.2	7.1
	Aug	138.7	6.7	130.0	6.8	155.3	3.8	135.9	8.5	142.4	6.7
	Sept	139.4	7.0	130.9	6.9	155.5	4.3	136.8	8.8	143.1	7.1
	Oct	139.7	7.2	131.0	7.0	155.6	4.3	137.3	9.1	143.4	7.3
	Nov	140.1	7.2	131.2	7.0	155.9	4.3	137.9	9.0	144.0	7.3
	Dec	140.6	7.4	131.6	6.9	156.5	5.0	138.4	9.3	144.5	7.7
2011	Jan	141.8	7.9	132.8	7.3	158.2	5.9	139.2	9.5	145.6	8.2
	Feb	142.9	8.5	132.9	7.2	158.9	6.2	141.3	10.9	147.2	9.1
	Mar	143.8	8.5	133.7	7.3	160.1	6.4	142.2	10.5	148.2	9.0
	Apr	146.0	8.2	135.2	6.5	162.2	5.5	144.8	10.9	150.6	8.9
	May	147.6	8.3	135.3	5.2	163.5	5.5	147.6	12.1	152.9	9.6
	Jun	149.0	7.9	138.0	6.4	164.8	6.5	148.1	9.6	153.6	8.5
	Jul	149.3	7.8	138.0	6.3	165.4	6.5	148.6	9.5	154.2	8.4
	Aug	150.8	8.7	139.0	7.0	165.7	6.7	150.9	11.1	155.8	9.5
	Sept	151.4	8.6	139.9	6.9	166.3	6.9	151.3	10.6	156.3	9.2
	Oct	152.0	8.8	140.3	7.1	167.0	7.4	152.1	10.8	157.0	9.5
	Nov	153.0	9.2	140.4	7.0	167.5	7.4	153.9	11.6	158.4	10.0
	Dec	153.5	9.2	140.7	6.9	168.0	7.4	154.6	11.8	159.1	10.1
2012	Jan	154.3	8.8	141.1	6.2	169.6	7.2	155.3	11.5	160.0	9.9
	Feb	154.7	8.2	141.0	6.1	170.4	7.3	155.7	10.2	160.6	9.1
	Mar	155.4	8.0	141.4	5.8	172.2	7.6	156.1	9.8	161.4	8.9
	Apr	156.9	7.5	142.4	5.3	176.0	8.5	156.7	8.2	163.2	8.3
	May	159.0	7.7	144.2	6.5	178.0	8.9	158.9	7.7	165.3	8.1
	Jun	159.8	7.3	145.0	5.1	178.7	8.4	159.7	7.8	166.0	8.1
	Jul	160.3	7.3	145.2	5.2	179.0	8.2	160.5	8.0	166.7	8.1
	Aug	160.8	6.6	145.7	4.8	179.3	8.2	161.1	6.7	167.2	7.3
	Sept	162.1	7.1	146.1	4.4	179.9	8.2	163.4	8.0	168.9	8.1
	Oct	162.8	7.1	146.3	4.3	181.6	8.7	164.0	7.8	169.9	8.2
	Nov	164.4	7.4	146.7	4.5	183.7	9.7	165.9	7.8	172.0	8.5
	Dec	164.9	7.4	147.3	4.7	184.5	9.8	166.3	7.5	172.5	8.4
2013	Jan	165.9	7.5	148.4	5.2	185.6	9.5	167.1	7.6	173.4	8.3
	Feb	166.2	7.5	148.5	5.3	186.0	9.2	167.5	7.6	173.8	8.2
	Mar	167.1	7.6	148.8	5.3	188.4	9.4	168.1	7.7	175.0	8.4
	Apr	168.2	7.2	150.1	5.4	190.9	8.4	168.4	7.5	176.0	7.9
	May	168.7	6.1	150.4	4.3	191.4	7.5	168.9	6.3	176.5	6.8
	Jun	169.1	5.8	151.1	4.2	191.1	6.9	169.5	6.2	176.8	6.5
% Change on last month		0.2		0.5		(0.1)		0.4		0.2	

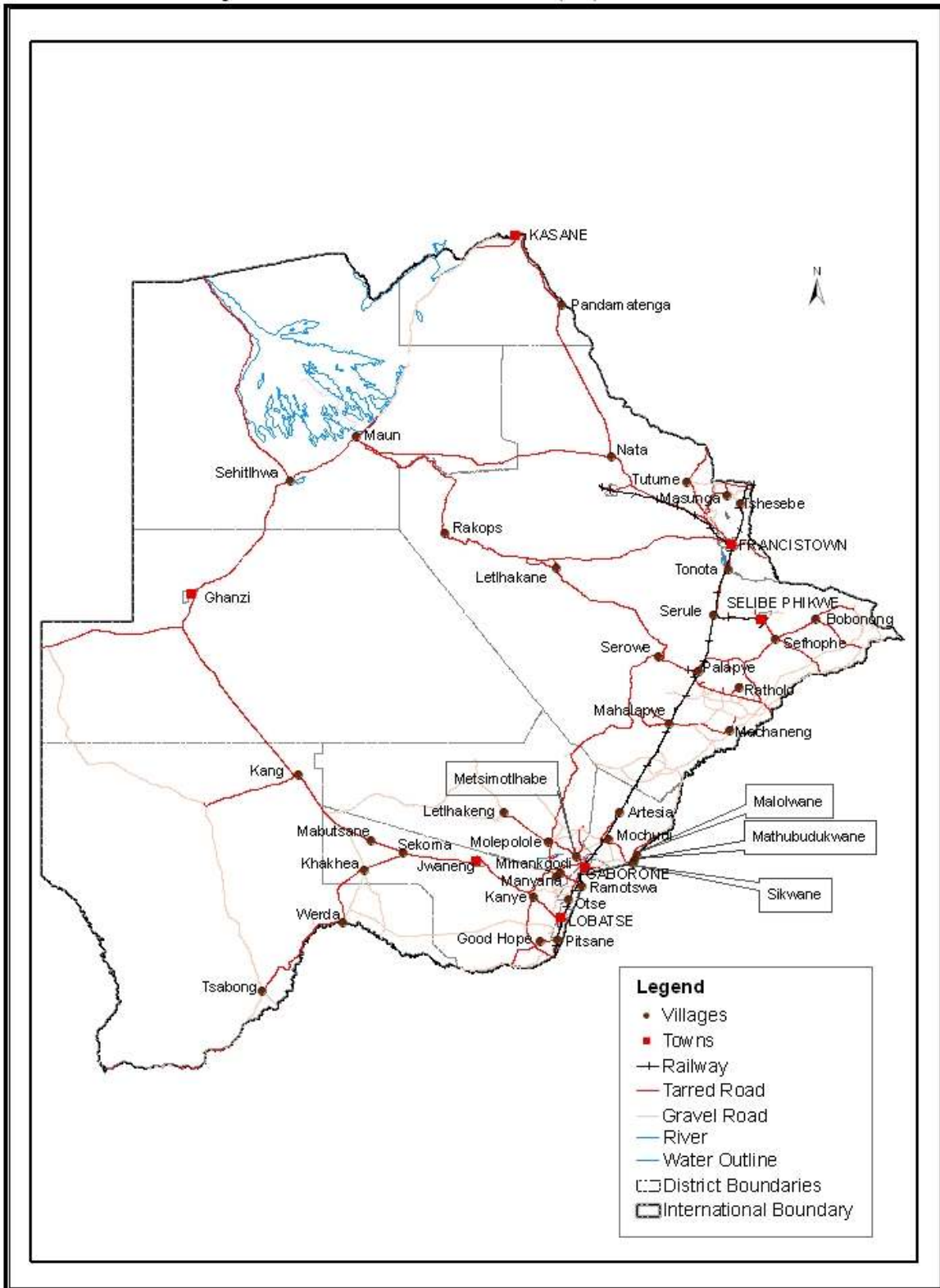
TABLE 4: Core Inflation Rates by Exclusion and Trimmed Mean

Year	Month	Consumer Price Index (Trimmed Mean) (September 2006 = 100)	Core Monthly Inflation Rate (Trimmed Mean) (percentage)	Consumer Price Index (Excluding Administered Prices) (September 2006 = 100)	Core Monthly Inflation (Excluding Administered Prices) (percentage)
2010					
	Jan	129.7	6.7	135.2	5.9
	Feb	129.0	6.7	135.5	5.8
	Mar	130.0	6.5	136.7	5.6
	Apr	133.1	7.7	139.1	6.8
	May	133.2	8.3	140.2	7.2
	Jun	135.0	8.1	141.0	6.9
	July	136.6	7.6	141.5	6.1
	Aug	135.4	7.2	142.0	6.3
	Sept	136.8	7.4	142.7	6.5
	Oct	137.2	7.6	143.1	6.8
	Nov	137.9	7.6	143.6	6.7
	Dec	137.5	7.7	144.2	7.1
2011					
	Jan	139.6	8.0	145.5	7.6
	Feb	142.1	8.6	146.0	7.7
	Mar	142.6	8.4	147.1	7.6
	Apr	143.4	8.0	149.4	7.4
	May	148.7	8.2	150.5	7.3
	Jun	148.8	7.6	151.4	7.4
	July	150.3	7.4	151.9	7.3
	Aug	153.7	8.4	152.5	7.4
	Sept	154.8	8.1	153.2	7.4
	Oct	155.6	8.3	154.0	7.6
	Nov	156.3	8.5	154.4	7.5
	Dec	156.9	8.5	155.1	7.5
2012					
	Jan	157.9	8.1	156.0	7.2
	Feb	158.0	7.8	156.5	7.2
	Mar	159.2	7.6	157.4	7.0
	Apr	158.9	7.3	159.2	6.6
	May	160.7	7.3	160.2	6.5
	Jun	163.9	6.8	161.2	6.4
	Jul	164.5	6.8	161.8	6.5
	Aug	164.0	6.3	162.5	6.6
	Sept	165.6	6.5	163.2	6.5
	Oct	163.7	6.7	164.1	6.6
	Nov	165.0	7.1	165.1	6.9
	Dec	165.7	7.1	165.7	6.8
2013					
	Jan	166.8	7.2	166.8	6.9
	Feb	167.2	7.2	167.2	6.9
	Mar	168.3	7.3	168.4	7.0
	Apr	172.2	6.8	169.4	6.4
	May	166.9	6.0	170.0	6.1
	Jun	168.1	5.7	171.1	5.7

TABLE 5: Average Annual Inflation (September 2006 = 100.0)

Group	Weights	YEAR				
		2008	2009	2010	2011	2012
1 Food & Non-Alcoholic Beverages	21.84	20.2	14.7	3.6	6.9	8.0
2 Alcoholic Beverages,Tobacco & Narcotics	9.29	13.2	35.2	7.1	8.4	7.6
3 Clothing and Footwear	7.52	2.0	8.4	8.0	8.9	7.5
4 Housing, Water, Electr. Gas & Other Fuels	11.46	8.1	4.8	6.4	8.4	7.7
5 Furnishing, H/H Equipment & Routine Maintenance	6.76	6.0	11.9	9.4	9.0	7.3
6 Health	2.71	11.3	5.5	2.7	4.5	5.9
7 Transport	18.98	21.2	(8.4)	12.1	13.2	10.8
8 Communication	3.01	(0.3)	(0.3)	1.2	(3.0)	(1.4)
9 Recreation & Culture	2.22	2.3	5.0	6.0	8.3	5.8
10 Education	3.37	3.9	3.9	5.8	10.6	6.4
11 Restaurants & Hotels	3.27	12.7	18.8	9.0	9.3	8.4
12 Miscellaneous Goods & Services	9.57	4.9	3.8	7.0	5.3	2.0
All-Items Index	100.0	12.6	8.2	6.9	8.5	7.5

Prices Collection Coverage for Botswana Consumer Price Index (CPI) - 2013



Glossary

Consumer Price Index (CPI) is an index which measures price changes in goods and services with reference to a base period.

Inflation is a measurement of prices movement of goods and services in a particular country.

Domestic Tradable refers to the goods and services which a country (Botswana) can export to other countries.

Imported Tradable represents the goods and services which a country (Botswana) imports from other countries (trading partners).

Non-Tradable refers to the goods and services which a country cannot either export or import to other countries.

All –Tradable refers to the total of **Domestic** and **Imported tradable**.

Trimmed Mean Core Inflation- attempts to remove 8 percent (by weight) of the commodity sub-groups with the largest price changes at each of the ends of an ordered series of price changes in any given month.

Core inflation by Exclusion is a measure used to remove the volatility inherent in prices that are only adjusted periodically and not always in response to currently prevailing market forces.