

# CONSUMER PRICE INDEX

July 2013

# STATISTICS BOTSWANA

Copyrights © Statistics Botswana 2013

**Contact Statistician:**

Phaladi Labobedi

**Tel:** (267) 393 4968

**Fax:** (267) 3952 201

Statistics Botswana, Private Bag 0024 Botswana

**Tel:** (267) 367 1300. **Fax:** (267) 395 2201. **Email:** [csobots@gov.bw](mailto:csobots@gov.bw) **Website:** [www.cso.gov.bw](http://www.cso.gov.bw)

## COMMENTARY

**Section 1: Headline Inflation**

**Section 2: Core Inflation**

## CHARTS

1. National Rates of Inflation, January 2011 – July 2013
2. Monthly Changes in the Cost-of-Living Index, January 2011 – July 2013
3. Non-Tradable Inflation Rates, January 2011 – July 2013
4. Tradable Inflation Rates, January 2011 - July 2013

## TABLES

1. Cost-of-Living Index Series (January 2011 – July 2013)
2. National Cost-of-Living Group and Section Indices
3. Cost-of-Living Index by Tradability (January 2011 – July 2013)
4. Core Inflation Rates
5. Annual Average Inflation Rates 2008-2012

## GLOSSARY

## COMMENTARY

### Section 1: Headline Inflation

The national annual inflation rate was 5.7 percent in July 2013, down from 5.8 percent during the preceding month. The annual rate in July 2013 was lower than the 7.3 percent recorded during the similar month in 2012. The major components which contributed to the decline in national annual inflation rate were Transport (3.6 percentage points), Food and Non-Alcoholic Beverages (3.3 percentage points), Housing, Electricity, Gas & Other Fuels (4.0 percentage points). Comparison of inflation rate among regions from June to July, showed that urban villages' went down to 5.5 from 5.8 percent, rural villages' dropped to 6.4 percent down from 6.6 percent while cities and towns remained unchanged at 5.5 percent.

The July 2013 national Consumer Price Index was 169.4, an increase of 0.2 percent from 169.1 recorded in June 2013. The cities and towns' index advanced from 168.1 to 168.5, recording an increase of 0.2 percent. The Urban villages' index realized a rise of 0.1 percent, from 168.1 to 168.3 between the two months, while the rural villages' index moved from 173.3 to 173.5 between June and July, also registering an increase of 0.1 percent.

Group indices were stable between June and July, recording changes of less than 1.0 percent.

The *Clothing & Footwear* group index registered an increase of 0.4 percent from 152.3 in June to 152.9 in July. This is due to the increase of the section indices such as *Cleaning, Repair & Hire* (3.6 percent), *Clothing* (0.5 percent), *Other articles of Clothing* (0.5 percent) and *Footwear* (0.2 percent).

The *Furnishing, Household Equipment & Routine Maintenance* group index registered an increase of 0.3 percent from 167.4 in June to 167.9 in July. All section indices recorded an increase, notably, *Furniture & Furnishing* (0.8 percent), *Household Appliances* (0.3 percent).

*All-Tradable* inflation rate recorded a decrease of 0.2 of a percentage point from 6.5 percent in June to 6.3 percent in July. The *Imported Tradable* inflation rate recorded a drop of 0.2 of a percentage point, from 6.2 percent in June to 6.0 percent in July. The *Domestic Tradable* inflation went down by 0.1 of a percentage point in July, registering 6.8 percent against 6.9 percent in June, while the *Non-Tradable* inflation rate went down by 0.1 of a percentage point, from 4.2 percent in June to 4.1 percent in July.

The *All-Tradable index* advanced from 176.8 in June to 177.2 in July, recording an increase of 0.2 percent. The *Imported Tradable* index moved from 169.5 to 170.1, an increase of 0.3 percent, whereas the *Non-Tradable* index went up by 0.1 percent, from 151.1 in June to 151.2 in July.

### Section 2: Core Inflation

The Trimmed Mean Core Inflation rate stood at 5.5 percent in July, a decrease of 0.2 of a percentage point on the June 2013 rate of 5.7 percent. The Core Inflation rate by exclusion also went down by 0.2 of a percentage point from 5.7 percent to 5.5 percent between June and July 2013.

Chart 1: National Inflation Rate 2011 - 2013

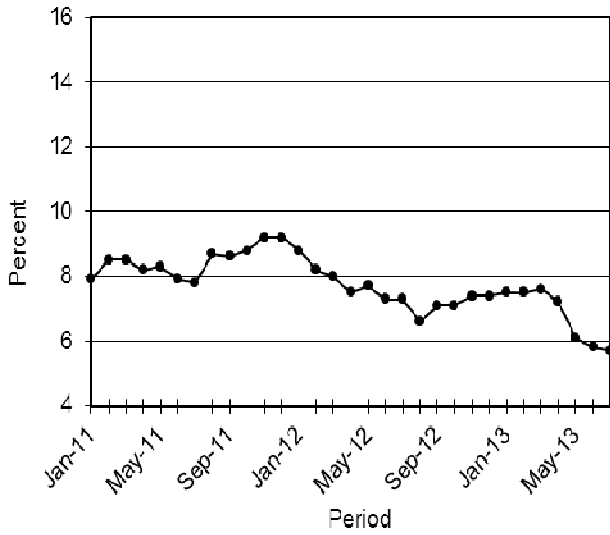


Chart 2: Monthly Changes in Cost-of-Living Index 2011 - 2013

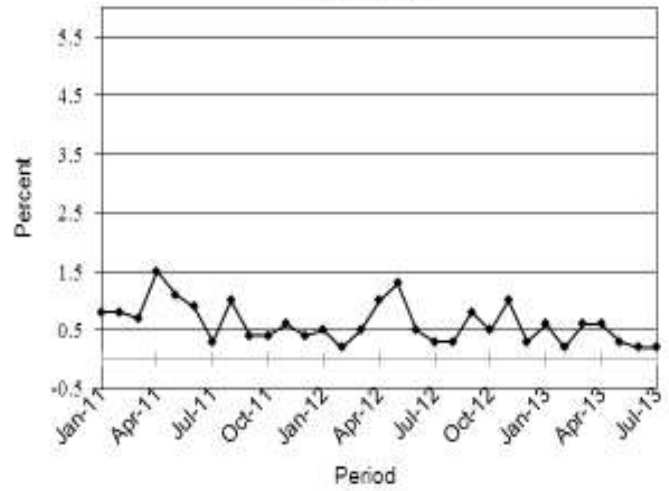


Chart 3: Non-Tradable Inflation 2011 - 2013

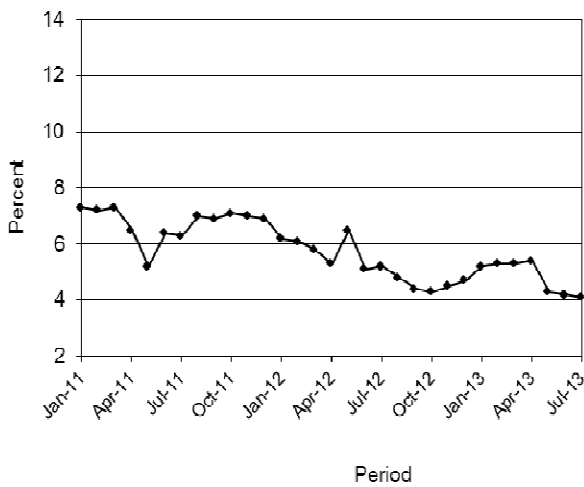
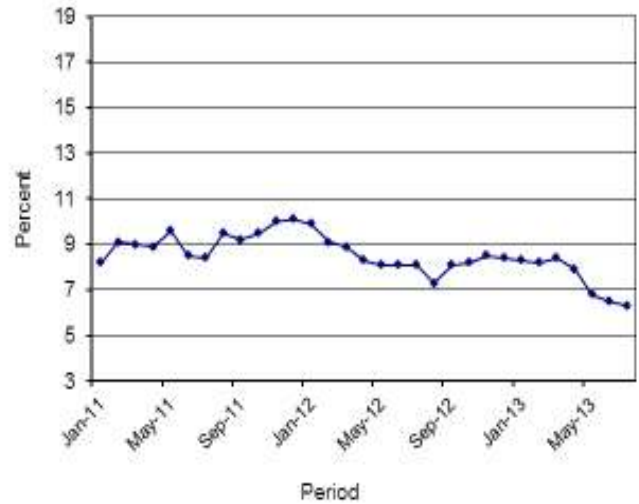


Chart 4: Tradable Inflation 2011 - 2013



A.N. Majelantle  
 Statistician General  
 15<sup>th</sup> August 2013

**TABLE 1: COST OF LIVING INDEX (September 2006 =100.0)**

		Food	Alcohol and Tobacco	Clothing and Footwear	Housing	Furniture etc	Health	Transport	Communication	Rec. & Culture	Education	Rest. & Hotels	Miscellaneous
<b>Weights</b>		<b>21.84</b>	<b>9.29</b>	<b>7.52</b>	<b>11.46</b>	<b>6.76</b>	<b>2.71</b>	<b>18.98</b>	<b>3.01</b>	<b>2.22</b>	<b>3.37</b>	<b>3.27</b>	<b>9.57</b>
<b>(1)</b>	<b>(2)</b>	<b>(3)</b>	<b>(4)</b>	<b>(5)</b>	<b>(6)</b>	<b>(7)</b>	<b>(8)</b>	<b>(9)</b>	<b>(10)</b>	<b>(11)</b>	<b>(12)</b>	<b>(13)</b>	<b>(14)</b>
<b>2011</b>	Jan	158.2	183.4	127.5	129.1	142.3	128.7	133.7	96.4	117.1	133.2	172.7	122.6
	Feb	159.1	183.9	127.9	129.4	142.9	128.8	137.5	96.4	117.6	133.2	172.9	122.6
	Mar	160.5	186.0	128.5	130.9	144.6	129.1	137.7	96.4	118.5	133.2	173.7	122.8
	Apr	164.4	188.5	131.0	131.1	145.3	133.0	139.0	96.4	123.4	133.2	175.5	125.7
	May	165.8	191.3	132.1	131.8	146.7	133.3	142.8	91.2	124.1	133.2	179.3	126.1
	Jun	166.6	191.9	133.1	137.6	148.9	133.6	143.3	91.2	124.4	133.2	182.5	126.6
	Jul	167.0	192.2	134.4	138.2	149.5	133.6	143.4	91.2	124.5	133.2	183.4	126.7
	Aug	167.9	192.4	135.1	138.9	150.4	133.7	148.7	91.2	124.7	133.2	183.7	126.8
	Sept	168.8	192.4	135.8	140.0	152.9	133.9	148.8	91.2	124.8	133.2	184.5	126.9
	Oct	169.8	192.8	136.4	140.6	153.9	136.0	149.4	91.2	125.3	133.2	184.6	127.1
	Nov	170.7	192.9	137.2	141.2	154.3	136.1	152.6	91.2	125.3	133.2	185.3	127.2
	Dec	171.8	192.8	138.8	141.8	155.2	136.4	152.6	91.2	125.4	133.2	186.0	127.2
<b>2012</b>	Jan	172.3	193.5	139.6	141.9	155.6	136.5	153.4	91.2	125.6	141.5	187.1	127.7
	Feb	173.3	193.6	140.2	142.0	155.9	136.9	153.5	91.2	125.7	141.5	187.5	127.7
	Mar	174.6	196.0	140.7	142.4	156.6	137.2	153.5	91.2	125.9	141.7	189.5	127.7
	Apr	177.0	201.2	140.9	142.4	157.5	141.0	153.8	91.7	130.2	141.7	192.7	128.2
	May	178.4	204.7	141.3	147.4	158.1	141.3	157.8	91.7	130.3	141.7	193.7	128.3
	Jun	179.6	205.2	141.9	148.6	160.1	141.5	158.2	91.7	130.4	141.7	194.9	128.4
	Jul	180.4	205.8	142.5	148.4	160.6	142.1	159.3	91.7	130.9	141.7	195.3	128.6
	Aug	181.0	206.1	144.0	148.4	161.2	142.3	159.9	91.7	131.8	141.7	196.1	128.2
	Sept	181.7	206.9	145.5	148.5	161.9	142.6	164.2	91.7	132.1	141.7	199.3	128.2
	Oct	182.8	210.7	146.0	148.4	162.4	142.7	164.4	91.7	132.3	141.7	201.0	128.3
	Nov	183.4	215.5	146.8	148.5	163.0	142.7	168.2	91.7	132.5	141.7	203.8	128.5
	Dec	184.2	216.3	147.5	148.7	163.5	143.1	169.2	91.7	132.6	141.7	204.1	128.6
<b>2013</b>	Jan	185.2	216.9	148.0	148.8	164.0	146.8	170.0	91.7	132.6	148.4	204.6	129.2
	Feb	186.0	217.2	148.6	148.9	164.5	147.2	170.1	91.7	132.8	148.4	204.9	129.2
	Mar	187.1	222.1	149.1	149.5	165.2	147.4	170.4	91.7	133.0	148.4	205.6	129.3
	Apr	187.7	226.1	150.4	152.2	165.8	147.6	170.5	91.7	135.9	148.4	208.2	129.0
	May	188.3	226.7	151.5	152.2	166.3	147.8	170.7	91.7	136.0	148.4	210.1	129.3
	Jun	188.6	226.9	152.3	153.4	167.4	148.4	170.7	91.7	136.1	148.4	210.6	129.3
	Jul	188.8	227.2	152.9	153.5	167.9	148.7	171.2	91.7	136.3	148.4	210.8	129.6
<b>% Change on Last month</b>		<b>0.1</b>	<b>0.1</b>	<b>0.4</b>	<b>0.1</b>	<b>0.3</b>	<b>0.1</b>	<b>0.3</b>	<b>0.0</b>	<b>0.2</b>	<b>0.0</b>	<b>0.1</b>	<b>0.3</b>

**TABLE 1: COST OF LIVING INDEX continued\_ by Strata**

	All Items Index	National Inflation Rate  %	Monthly Change  %	Towns & Cities Index  <b>47.33</b>	Urban Village Index  <b>33.76</b>	Rural Villages Index  <b>18.91</b>	Towns & Cities  %	Annual Urban Villages  %	Inflation Rural  %
<b>2011</b> Jan	141.8	<b>7.9</b>	<b>0.8</b>	141.3	141.0	144.5	<b>8.8</b>	<b>7.5</b>	<b>6.4</b>
Feb	142.9	<b>8.5</b>	<b>0.8</b>	142.4	142.2	145.5	<b>9.5</b>	<b>8.4</b>	<b>6.6</b>
Mar	143.8	<b>8.5</b>	<b>0.7</b>	143.2	143.2	146.6	<b>9.3</b>	<b>8.7</b>	<b>6.0</b>
Apr	146.0	<b>8.2</b>	<b>1.5</b>	145.3	145.5	148.8	<b>8.9</b>	<b>8.5</b>	<b>6.0</b>
May	147.6	<b>8.3</b>	<b>1.1</b>	146.9	146.9	150.5	<b>9.0</b>	<b>8.5</b>	<b>6.2</b>
Jun	149.0	<b>7.9</b>	<b>0.9</b>	148.4	148.1	152.0	<b>8.3</b>	<b>8.1</b>	<b>6.4</b>
Jul	149.3	<b>7.8</b>	<b>0.3</b>	148.9	148.3	152.3	<b>8.4</b>	<b>7.7</b>	<b>6.3</b>
Aug	150.8	<b>8.7</b>	<b>1.0</b>	150.4	149.8	153.4	<b>9.1</b>	<b>8.9</b>	<b>7.5</b>
Sept	151.4	<b>8.6</b>	<b>0.4</b>	150.9	150.6	153.9	<b>8.9</b>	<b>8.6</b>	<b>7.6</b>
Oct	152.0	<b>8.8</b>	<b>0.4</b>	151.4	151.5	154.6	<b>9.0</b>	<b>8.9</b>	<b>8.1</b>
Nov	153.0	<b>9.2</b>	<b>0.6</b>	152.4	152.7	155.0	<b>9.3</b>	<b>9.6</b>	<b>8.2</b>
Dec	153.5	<b>9.2</b>	<b>0.4</b>	152.9	153.1	155.9	<b>9.4</b>	<b>9.4</b>	<b>8.3</b>
<b>2012</b> Jan	154.3	<b>8.8</b>	<b>0.5</b>	153.5	154.0	157.0	<b>8.6</b>	<b>9.2</b>	<b>8.6</b>
Feb	154.7	<b>8.2</b>	<b>0.2</b>	153.7	154.4	157.6	<b>8.0</b>	<b>8.6</b>	<b>8.3</b>
Mar	155.4	<b>8.0</b>	<b>0.5</b>	154.3	155.1	158.6	<b>7.8</b>	<b>8.3</b>	<b>8.2</b>
Apr	156.9	<b>7.5</b>	<b>1.0</b>	156.0	156.6	159.8	<b>7.3</b>	<b>7.7</b>	<b>7.4</b>
May	159.0	<b>7.7</b>	<b>1.3</b>	158.6	158.2	161.3	<b>8.0</b>	<b>7.7</b>	<b>7.2</b>
Jun	159.8	<b>7.3</b>	<b>0.5</b>	159.3	158.9	162.5	<b>7.4</b>	<b>7.3</b>	<b>6.9</b>
Jul	160.3	<b>7.3</b>	<b>0.3</b>	159.7	159.5	163.2	<b>7.3</b>	<b>7.6</b>	<b>7.1</b>
Aug	160.8	<b>6.6</b>	<b>0.3</b>	160.0	160.2	163.6	<b>6.4</b>	<b>6.9</b>	<b>6.6</b>
Sept	162.1	<b>7.1</b>	<b>0.8</b>	161.9	161.2	164.2	<b>7.2</b>	<b>7.0</b>	<b>6.7</b>
Oct	162.8	<b>7.1</b>	<b>0.5</b>	162.6	161.7	165.3	<b>7.5</b>	<b>6.8</b>	<b>6.9</b>
Nov	164.4	<b>7.4</b>	<b>1.0</b>	164.2	163.1	167.2	<b>7.7</b>	<b>6.8</b>	<b>7.9</b>
Dec	164.9	<b>7.4</b>	<b>0.3</b>	164.3	163.9	168.4	<b>7.5</b>	<b>7.1</b>	<b>8.0</b>
<b>2013</b> Jan	165.9	<b>7.5</b>	<b>0.6</b>	165.0	164.8	170.0	<b>7.5</b>	<b>7.0</b>	<b>8.3</b>
Feb	166.2	<b>7.5</b>	<b>0.2</b>	165.2	165.0	170.7	<b>7.5</b>	<b>6.9</b>	<b>8.3</b>
Mar	167.1	<b>7.6</b>	<b>0.6</b>	166.0	166.2	171.8	<b>7.5</b>	<b>7.2</b>	<b>8.3</b>
Apr	168.2	<b>7.2</b>	<b>0.6</b>	167.3	167.4	172.1	<b>7.3</b>	<b>6.9</b>	<b>7.7</b>
May	168.7	<b>6.1</b>	<b>0.3</b>	168.0	167.5	172.5	<b>5.9</b>	<b>5.9</b>	<b>6.9</b>
Jun	169.1	<b>5.8</b>	<b>0.2</b>	168.1	168.1	173.3	<b>5.5</b>	<b>5.8</b>	<b>6.6</b>
Jul	169.4	<b>5.7</b>	<b>0.2</b>	168.5	168.3	173.5	<b>5.5</b>	<b>5.5</b>	<b>6.4</b>
<b>% Change on last month</b>	<b>0.2</b>			<b>0.2</b>	<b>0.1</b>	<b>0.1</b>			

**Table 2: National Cost-of-Living Group & Section Indices (September 2006 = 100.0)**

Group Section	Weights	This	Last	3 months	6 months	12 months	Percentage Change on:			
		month Jul 2013	month Jun 2013	ago Apr 2013	ago Jan 2013	ago Jul 2012	Last month	3 months ago	6 months ago	12 months ago
<b>1 Food &amp; Non-Alcoholic Beverages</b>	<b>21.84</b>	<b>188.8</b>	<b>188.6</b>	<b>187.7</b>	<b>185.2</b>	<b>180.4</b>	<b>0.1</b>	<b>0.6</b>	<b>1.9</b>	<b>4.7</b>
1.1 Bread & Cereals	6.51	185.3	185.1	184.6	183.0	180.2	0.1	0.4	1.2	2.8
1.2 Meat (Fresh, Chilled & Frozen)	3.15	192.9	192.5	191.7	190.5	184.0	0.2	0.6	1.2	4.8
1.3 Fish (Fresh, Chilled & Frozen)	0.20	191.0	190.7	187.9	185.5	179.9	0.1	1.6	2.9	6.2
1.4 Milk, Cheese & Milk Products	2.19	189.2	188.7	187.9	185.1	182.5	0.3	0.7	2.2	3.7
1.5 Oils & Fats	0.90	229.4	229.1	228.2	223.8	216.5	0.2	0.5	2.5	6.0
1.6 Fruit	0.67	136.5	136.6	134.2	132.8	126.1	(0.0)	1.8	2.8	8.3
1.7 Vegetables	1.94	190.1	192.1	190.9	186.7	177.9	(1.0)	(0.4)	1.8	6.8
1.8 Sugar, Jam, Honey, Chocolate & Confectionery	1.36	194.0	194.0	193.1	189.2	184.2	0.0	0.5	2.6	5.4
1.9 Food not else where Classified	2.36	189.3	188.6	187.8	186.5	179.7	0.4	0.8	1.5	5.4
1.10 Coffee, Tea & Cocoa	0.63	207.7	207.4	205.3	202.3	201.8	0.1	1.2	2.7	2.9
1.11 Mineral Waters, Soft Drinks, Fruits & Veg. Juices	1.94	180.4	179.8	178.3	173.4	168.5	0.4	1.2	4.1	7.1
<b>2 Alcoholic Beverages, Tobacco &amp; Narcotics</b>	<b>9.29</b>	<b>227.2</b>	<b>226.9</b>	<b>226.1</b>	<b>216.9</b>	<b>205.8</b>	<b>0.1</b>	<b>0.5</b>	<b>4.8</b>	<b>10.4</b>
2.1 Alcoholic Beverages	8.09	228.2	228.0	227.2	217.6	205.7	0.1	0.4	4.9	10.9
2.2 Tobacco	1.20	220.8	219.5	218.4	212.3	206.8	0.6	1.1	4.0	6.8
<b>3 Clothing and Footwear</b>	<b>7.52</b>	<b>152.9</b>	<b>152.3</b>	<b>150.4</b>	<b>148.0</b>	<b>142.5</b>	<b>0.4</b>	<b>1.7</b>	<b>3.3</b>	<b>7.3</b>
3.1 Clothing	3.33	174.4	173.6	171.1	167.4	161.9	0.5	1.9	4.2	7.7
3.2 Other articles of Clothing	1.82	137.8	137.2	135.9	134.5	127.4	0.5	1.4	2.5	8.2
3.3 Cleaning, Repair & Hire	0.03	193.3	186.5	184.1	183.0	177.4	3.6	5.0	5.6	9.0
3.4 Footwear	2.34	133.5	133.3	131.7	130.6	126.2	0.2	1.4	2.2	5.8
<b>4 Housing, Water, Electr. Gas &amp; Other Fuels</b>	<b>11.46</b>	<b>153.5</b>	<b>153.4</b>	<b>152.2</b>	<b>148.8</b>	<b>148.4</b>	<b>0.1</b>	<b>0.9</b>	<b>3.2</b>	<b>3.4</b>
4.1 Rent paid by Tenants	5.68	133.0	133.0	132.4	131.3	130.8	0.0	0.4	1.3	1.6
4.2 Materials for Maintenance & Repair of dwellings	2.57	147.2	146.6	146.3	144.9	142.4	0.4	0.7	1.6	3.4
4.3 Water Supply & Misc. Services	1.14	160.2	160.2	151.4	151.4	151.4	0.0	5.8	5.8	5.8
4.4 Electricity Gas and other Fuels	2.06	214.2	214.3	214.2	200.2	202.6	(0.0)	(0.0)	7.0	5.7
<b>5 Furnishing, H/H Equipment &amp; Routine Maintenance</b>	<b>6.76</b>	<b>167.9</b>	<b>167.4</b>	<b>165.8</b>	<b>164.0</b>	<b>160.6</b>	<b>0.3</b>	<b>1.3</b>	<b>2.4</b>	<b>4.6</b>
5.1 Furniture & Furnishing	2.31	142.4	141.2	139.7	138.6	134.6	0.8	1.9	2.7	5.8
5.2 Carpets & Other Floor Coverings	0.04	151.9	151.8	151.4	150.4	147.2	0.1	0.3	1.0	3.2
5.3 Household Textiles	0.44	154.5	154.2	153.3	151.8	149.0	0.2	0.8	1.8	3.7
5.4 Household Appliances	0.69	142.4	142.0	140.3	139.5	135.9	0.3	1.5	2.1	4.8
5.5 Glassware, Tableware & Household Utensils	0.44	177.9	177.7	176.6	174.0	168.7	0.1	0.7	2.2	5.5
5.6 Small Tools, Miscellaneous Accessories	0.06	174.0	173.8	171.7	169.2	167.0	0.1	1.3	2.8	4.2
5.7 Goods & Services for H/hold Maintenance	2.79	195.9	195.8	193.9	191.4	188.7	0.0	1.0	2.3	3.8

**Table 2: National Cost-of-Living Group & Section Indices (September 2006 = 100.0)  
(Cont.)**

Group Section	Weights	This	Last	3 months	6 months	12 months	Percentage Change on:			
		month Jul 2013	month Jun 2013	ago Apr 2013	ago Jan 2013	ago Jul 2012	Last month	3 months ago	6 months ago	12 months ago
<b>6 Health</b>	<b>2.71</b>	<b>148.7</b>	<b>148.4</b>	<b>147.6</b>	<b>146.8</b>	<b>142.1</b>	<b>0.1</b>	<b>0.7</b>	<b>1.2</b>	<b>4.6</b>
6.1 Medical Products, App. & Equip.	0.35	185.2	183.5	177.2	171.4	164.4	0.9	4.5	8.1	12.6
6.2 Out-patient Services	0.66	149.8	149.8	149.8	149.6	148.0	0.0	0.0	0.1	1.2
6.3 Hospital Services	1.71	140.7	140.7	140.7	140.7	135.3	0.0	0.0	0.0	4.0
<b>7 Transport</b>	<b>18.98</b>	<b>171.2</b>	<b>170.7</b>	<b>170.5</b>	<b>170.0</b>	<b>159.3</b>	<b>0.3</b>	<b>0.4</b>	<b>0.7</b>	<b>7.5</b>
7.1 Purchase of Vehicles	5.89	152.2	150.9	151.2	151.1	150.9	0.9	0.7	0.7	0.9
7.2 Operation of Personal Transport	10.92	180.4	180.3	179.7	178.9	163.5	0.1	0.3	0.8	10.3
7.3 Transport Services	2.17	176.5	176.5	176.5	176.5	160.9	0.0	0.0	0.0	9.7
<b>8 Communication</b>	<b>3.01</b>	<b>91.7</b>	<b>91.7</b>	<b>91.7</b>	<b>91.7</b>	<b>91.7</b>	<b>0.0</b>	<b>0.0</b>	<b>0.0</b>	<b>0.0</b>
8.1 Postal Services	0.04	209.9	209.9	209.9	209.9	209.9	0.0	0.0	0.0	0.0
8.2 Telephone & Telefax Equipment	0.74	66.6	66.6	66.6	66.6	66.6	0.0	0.0	0.0	0.0
8.3 Telephone & Telefax Services	2.23	98.0	98.0	98.0	98.0	97.9	0.0	0.0	0.0	0.0
<b>9 Recreation &amp; Culture</b>	<b>2.22</b>	<b>136.3</b>	<b>136.1</b>	<b>135.9</b>	<b>132.6</b>	<b>130.9</b>	<b>0.2</b>	<b>0.4</b>	<b>2.8</b>	<b>4.2</b>
9.1 Audio Visual, Photographic & Info. Proce. Equip.	1.09	106.2	106.0	105.8	105.5	104.5	0.2	0.4	0.7	1.6
9.2 Other Recreational Items & Equip.	0.18	162.6	161.4	160.1	158.8	150.2	0.7	1.5	2.4	8.3
9.3 Recreational & Cultural Services	0.76	156.0	156.0	156.0	149.2	148.4	0.0	0.0	4.6	5.2
9.4 Newspapers, Books & Stationary	0.19	203.2	202.7	202.2	194.6	191.4	0.2	0.5	4.4	6.1
<b>10 Education</b>	<b>3.37</b>	<b>148.4</b>	<b>148.4</b>	<b>148.4</b>	<b>148.4</b>	<b>141.7</b>	<b>0.0</b>	<b>0.0</b>	<b>0.0</b>	<b>4.7</b>
10.1 Pre-Primary & Primary Education	1.10	185.1	185.1	185.1	185.1	173.5	0.0	0.0	0.0	6.7
10.2 Secondary & Tertiary Education	2.26	130.5	130.5	130.5	130.5	126.2	0.0	0.0	0.0	3.4
<b>11 Restaurants &amp; Hotels</b>	<b>3.27</b>	<b>210.8</b>	<b>210.6</b>	<b>208.2</b>	<b>204.6</b>	<b>195.3</b>	<b>0.1</b>	<b>1.3</b>	<b>3.0</b>	<b>8.0</b>
11.1 Restaurants, Cafes and the Like	3.08	213.8	213.6	211.1	207.3	197.7	0.1	1.3	3.1	8.2
11.2 Accommodation Services	0.19	161.6	161.3	160.7	160.0	155.4	0.2	0.6	1.0	3.9
<b>12 Miscellaneous Goods &amp; Services</b>	<b>9.57</b>	<b>129.6</b>	<b>129.3</b>	<b>129.0</b>	<b>129.2</b>	<b>128.6</b>	<b>0.3</b>	<b>0.5</b>	<b>0.4</b>	<b>0.8</b>
12.1 Personal Care	0.66	156.6	156.3	155.2	153.9	151.8	0.2	0.9	1.8	3.2
12.2 Personal Effects N.E.C.	0.04	134.7	134.6	133.5	132.2	127.9	0.1	0.9	1.9	5.3
12.3 Social Protection	0.14	160.5	160.5	160.5	160.5	147.8	0.0	0.0	0.0	8.6
12.4 Insurance	6.32	128.6	128.2	128.1	128.7	129.6	0.3	0.3	(0.1)	(0.8)
12.5 Financial Services	0.18	145.8	145.5	147.8	146.0	142.0	0.2	(1.4)	(0.1)	2.7
12.6 Taxes Licences, Fees	2.24	121.4	121.2	120.1	119.9	116.6	0.2	1.1	1.3	4.2
<b>All-Items Index</b>	<b>100.0</b>	<b>169.4</b>	<b>169.1</b>	<b>168.2</b>	<b>165.9</b>	<b>160.3</b>	<b>0.2</b>	<b>0.7</b>	<b>2.1</b>	<b>5.7</b>



**TABLE 3: COST-OF-LIVING INDEX BY TRADABILITY (September 2006 = 100.0)**

Weights	All Items		Non-Tradable		Domestic Tradable		Imported Tradable		All Tradable	
	Index	Inflation	Index	Inflation	Index	Inflation	Index	Inflation	Index	Inflation
	100.00		30.92		23.91		45.17		69.08	
<b>2011</b>										
Jan	141.8	7.9	132.8	7.3	158.2	5.9	139.2	9.5	145.6	8.2
Feb	142.9	8.5	132.9	7.2	158.9	6.2	141.3	10.9	147.2	9.1
Mar	143.8	8.5	133.7	7.3	160.1	6.4	142.2	10.5	148.2	9.0
Apr	146.0	8.2	135.2	6.5	162.2	5.5	144.8	10.9	150.6	8.9
May	147.6	8.3	135.3	5.2	163.5	5.5	147.6	12.1	152.9	9.6
Jun	149.0	7.9	138.0	6.4	164.8	6.5	148.1	9.6	153.6	8.5
Jul	149.3	7.8	138.0	6.3	165.4	6.5	148.6	9.5	154.2	8.4
Aug	150.8	8.7	139.0	7.0	165.7	6.7	150.9	11.1	155.8	9.5
Sept	151.4	8.6	139.9	6.9	166.3	6.9	151.3	10.6	156.3	9.2
Oct	152.0	8.8	140.3	7.1	167.0	7.4	152.1	10.8	157.0	9.5
Nov	153.0	9.2	140.4	7.0	167.5	7.4	153.9	11.6	158.4	10.0
Dec	153.5	9.2	140.7	6.9	168.0	7.4	154.6	11.8	159.1	10.1
<b>2012</b>										
Jan	154.3	8.8	141.1	6.2	169.6	7.2	155.3	11.5	160.0	9.9
Feb	154.7	8.2	141.0	6.1	170.4	7.3	155.7	10.2	160.6	9.1
Mar	155.4	8.0	141.4	5.8	172.2	7.6	156.1	9.8	161.4	8.9
Apr	156.9	7.5	142.4	5.3	176.0	8.5	156.7	8.2	163.2	8.3
May	159.0	7.7	144.2	6.5	178.0	8.9	158.9	7.7	165.3	8.1
Jun	159.8	7.3	145.0	5.1	178.7	8.4	159.7	7.8	166.0	8.1
Jul	160.3	7.3	145.2	5.2	179.0	8.2	160.5	8.0	166.7	8.1
Aug	160.8	6.6	145.7	4.8	179.3	8.2	161.1	6.7	167.2	7.3
Sept	162.1	7.1	146.1	4.4	179.9	8.2	163.4	8.0	168.9	8.1
Oct	162.8	7.1	146.3	4.3	181.6	8.7	164.0	7.8	169.9	8.2
Nov	164.4	7.4	146.7	4.5	183.7	9.7	165.9	7.8	172.0	8.5
Dec	164.9	7.4	147.3	4.7	184.5	9.8	166.3	7.5	172.5	8.4
<b>2013</b>										
Jan	165.9	7.5	148.4	5.2	185.6	9.5	167.1	7.6	173.4	8.3
Feb	166.2	7.5	148.5	5.3	186.0	9.2	167.5	7.6	173.8	8.2
Mar	167.1	7.6	148.8	5.3	188.4	9.4	168.1	7.7	175.0	8.4
Apr	168.2	7.2	150.1	5.4	190.9	8.4	168.4	7.5	176.0	7.9
May	168.7	6.1	150.4	4.3	191.4	7.5	168.9	6.3	176.5	6.8
Jun	169.1	5.8	151.1	4.2	191.1	6.9	169.5	6.2	176.8	6.5
Jul	169.4	5.7	151.2	4.1	191.1	6.8	170.1	6.0	177.2	6.3
<b>% Change on last month</b>	<b>0.2</b>		<b>0.1</b>		<b>(0.0)</b>		<b>0.3</b>		<b>0.2</b>	

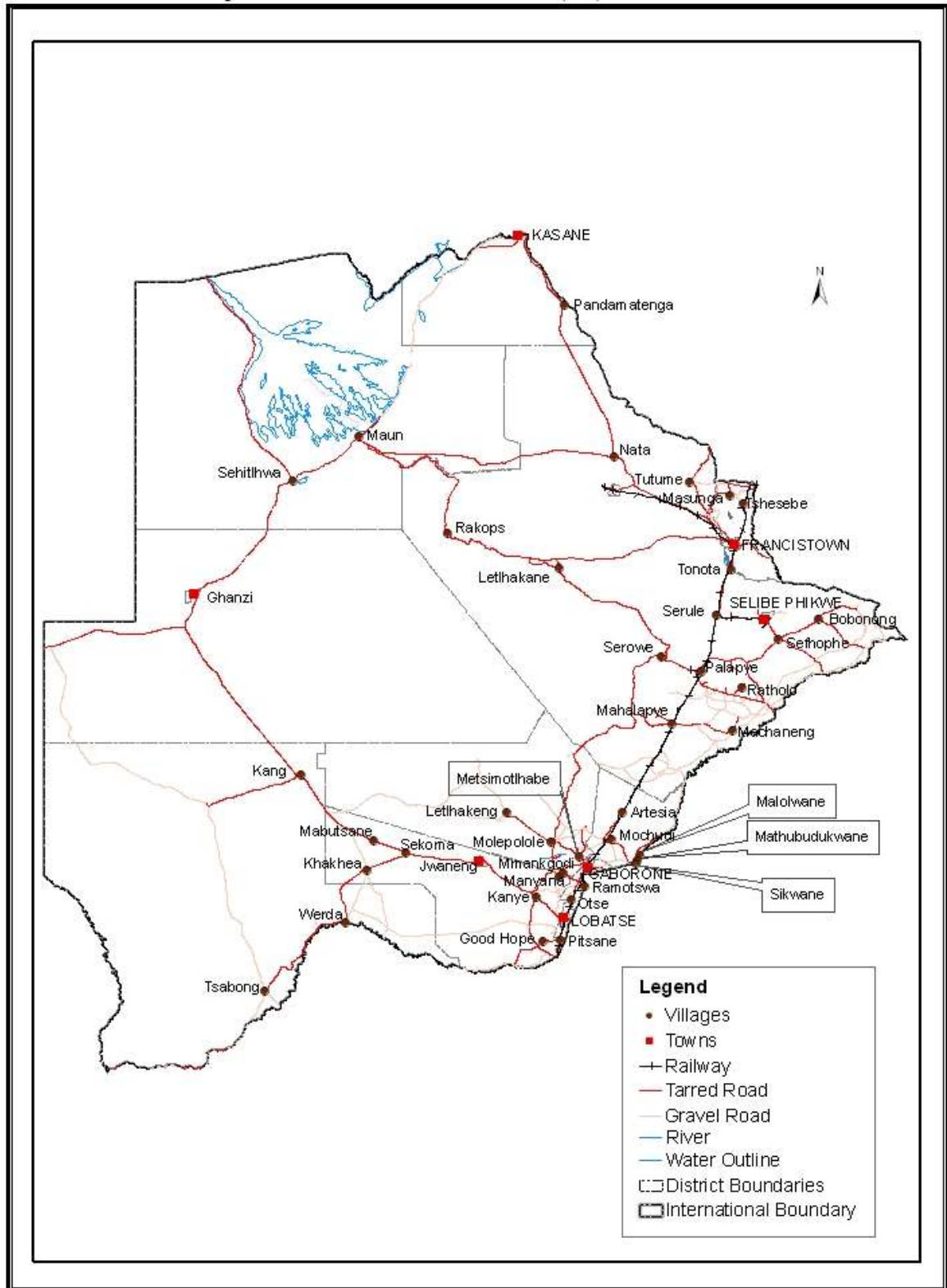
**TABLE 4: Core Inflation Rates by Exclusion and Trimmed Mean**

Year	Month	Consumer Price Index (Trimmed Mean) (September 2006 = 100)	Core Monthly Inflation Rate (Trimmed Mean) (percentage)	Consumer Price Index (Excluding Administered Prices) (September 2006 = 100)	Core Monthly Inflation (Excluding Administered Prices) (percentage)
<b>2011</b>					
	Jan	139.6	<b>8.0</b>	145.5	<b>7.6</b>
	Feb	142.1	<b>8.6</b>	146.0	<b>7.7</b>
	Mar	142.6	<b>8.4</b>	147.1	<b>7.6</b>
	Apr	143.4	<b>8.0</b>	149.4	<b>7.4</b>
	May	148.7	<b>8.2</b>	150.5	<b>7.3</b>
	Jun	148.8	<b>7.6</b>	151.4	<b>7.4</b>
	July	150.3	<b>7.4</b>	151.9	<b>7.3</b>
	Aug	153.7	<b>8.4</b>	152.5	<b>7.4</b>
	Sept	154.8	<b>8.1</b>	153.2	<b>7.4</b>
	Oct	155.6	<b>8.3</b>	154.0	<b>7.6</b>
	Nov	156.3	<b>8.5</b>	154.4	<b>7.5</b>
	Dec	156.9	<b>8.5</b>	155.1	<b>7.5</b>
<b>2012</b>					
	Jan	157.9	<b>8.1</b>	156.0	<b>7.2</b>
	Feb	158.0	<b>7.8</b>	156.5	<b>7.2</b>
	Mar	159.2	<b>7.6</b>	157.4	<b>7.0</b>
	Apr	158.9	<b>7.3</b>	159.2	<b>6.6</b>
	May	160.7	<b>7.3</b>	160.2	<b>6.5</b>
	Jun	163.9	<b>6.8</b>	161.2	<b>6.4</b>
	Jul	164.5	<b>6.8</b>	161.8	<b>6.5</b>
	Aug	164.0	<b>6.3</b>	162.5	<b>6.6</b>
	Sept	165.6	<b>6.5</b>	163.2	<b>6.5</b>
	Oct	163.7	<b>6.7</b>	164.1	<b>6.6</b>
	Nov	165.0	<b>7.1</b>	165.1	<b>6.9</b>
	Dec	165.7	<b>7.1</b>	165.7	<b>6.8</b>
<b>2013</b>					
	Jan	166.8	<b>7.2</b>	166.8	<b>6.9</b>
	Feb	167.2	<b>7.2</b>	167.2	<b>6.9</b>
	Mar	168.3	<b>7.3</b>	168.4	<b>7.0</b>
	Apr	172.2	<b>6.8</b>	169.4	<b>6.4</b>
	May	166.9	<b>6.0</b>	170.0	<b>6.1</b>
	Jun	168.4	<b>5.7</b>	170.3	<b>5.7</b>
	Jul	168.7	<b>5.5</b>	170.7	<b>5.5</b>

**TABLE 5: Average Annual Inflation (September 2006 = 100.0)**

Group	Weights	YEAR				
		2008	2009	2010	2011	2012
1 Food & Non-Alcoholic Beverages	21.84	20.2	14.7	3.6	6.9	8.0
2 Alcoholic Beverages,Tobacco & Narcotics	9.29	13.2	35.2	7.1	8.4	7.6
3 Clothing and Footwear	7.52	2.0	8.4	8.0	8.9	7.5
4 Housing, Water, Electr. Gas & Other Fuels	11.46	8.1	4.8	6.4	8.4	7.7
5 Furnishing, H/H Equipment & Routine Maintenance	6.76	6.0	11.9	9.4	9.0	7.3
6 Health	2.71	11.3	5.5	2.7	4.5	5.9
7 Transport	18.98	21.2	(8.4)	12.1	13.2	10.8
8 Communication	3.01	(0.3)	(0.3)	1.2	(3.0)	(1.4)
9 Recreation & Culture	2.22	2.3	5.0	6.0	8.3	5.8
10 Education	3.37	3.9	3.9	5.8	10.6	6.4
11 Restaurants & Hotels	3.27	12.7	18.8	9.0	9.3	8.4
12 Miscellaneous Goods & Services	9.57	4.9	3.8	7.0	5.3	2.0
All-Items Index	<b>100.0</b>	<b>12.6</b>	<b>8.2</b>	<b>6.9</b>	<b>8.5</b>	<b>7.5</b>

Prices Collection Coverage for Botswana Consumer Price Index (CPI) - 2013



## Glossary

**Consumer Price Index** (CPI) is an index which measures price changes in goods and services with reference to a base period.

**Inflation** is a measurement of prices movement of goods and services in a particular country.

**Domestic Tradable** refers to the goods and services which a country (Botswana) can export to other countries.

**Imported Tradable** represents the goods and services which a country (Botswana) imports from other countries (trading partners).

**Non-Tradable** refers to the goods and services which a country cannot either export or import to other countries.

**All –Tradable** refers to the total of **Domestic** and **Imported tradable**.

**Trimmed Mean Core Inflation**- attempts to remove 8 percent (by weight) of the commodity sub-groups with the largest price changes at each of the ends of an ordered series of price changes in any given month.

**Core inflation by Exclusion** is a measure used to remove the volatility inherent in prices that are only adjusted periodically and not always in response to currently prevailing market forces.