



Consumer Price Index

January 2018

Contact Statistician: Phaladi Labobedi
Email: +267 3671300
Fax: 3952201

Published by

STATISTICS BOTSWANA
Private Bag 0024, Gaborone
Tel: 3671300 Fax: 3952201
Email: info@statsbots.org.bw

January 2018

Copyright © Statistics Botswana 2018



CONSUMER PRICE INDEX
JANUARY 2018

CONTENTS

COMMENTARY

Section 1: Headline Inflation
Section 2: Core Inflation

CHARTS

1. National Rates of Inflation, January 2015 – January 2018
2. Monthly Changes in the Cost-of-Living Index, January 2015 – January 2018
3. Non-Tradable Inflation Rates, January 2015 – January 2018
4. Tradable Inflation Rates, January 2015 – January 2018

TABLES

1. Cost-of-Living Index Series (January 2015 – January 2018)
2. National Cost-of-Living Group and Section Indices
3. Cost-of-Living Index by Tradability (January 2015 – January 2018)
4. Core Inflation Rates
5. Annual Average Inflation Rates 2007-2017

GLOSSARY

COMMENTARY

Section 1: Headline Inflation

The annual inflation rate in January 2018 was 3.1 percent, registering a decrease of 0.1 of a percentage point on the December 2017 rate of 3.2 percent. The inflation rates for regions between December 2017 and January 2018 indicated that Rural Villages' decreased to 2.8 percent from 3.1 percent, Cities & Towns remained at 3.6 percent and Urban Villages' also remained unchanged at 2.9 percent between the two months.

The January national Consumer Price index moved from 103.7 in December 2017 to 104.1 in January 2018 posting an increase of 0.4 percent. The Cities & Towns' index realized a rise of 0.4 percent, moving from 104.0 to 104.5. The Urban Villages' index' rose by 0.4 percent, advancing from 103.3 in December 2017 to 103.7 in January 2018, while Rural Villages index registered an increase of 0.2 percent, moving from 103.9 to 104.1 between the two periods.

Group indices were generally moving at a steady pace between December 2017 and January 2018, recording changes of less than 1.0 percent except the Education group index which registered an increase of 5.4 percent.

The Education Group index recorded a rise of 5.4 percent, from 104.2 in December 2017 to 109.8 in January 2018. The constituent section indices of Pre-primary & Primary Education and Secondary & Tertiary Education registered increases of 15.6 and 2.1 percent respectively. The Pre-primary & Primary Education section index was 121.8 in January 2018, up from 105.4 in December 2017. The Secondary & Tertiary Education section index moved from 103.8 in December to 106.0 in the month under review. The rise was mainly attributed to increases in the private secondary and pre-primary & primary education school fees.

The Transport group index went up from 104.3 to 104.7, recording a rise of 0.4 percent between the two months. This was due to an increase in the Purchase of Vehicle section index which went up by 1.4 percent.

The Miscellaneous Goods & Services group index moved from 103.4 to 103.7, recording an increase of 0.3 percent between December and January. The rise was attributed to the general decrease in some section indices. Notably; Social Protection (18.5 percent).

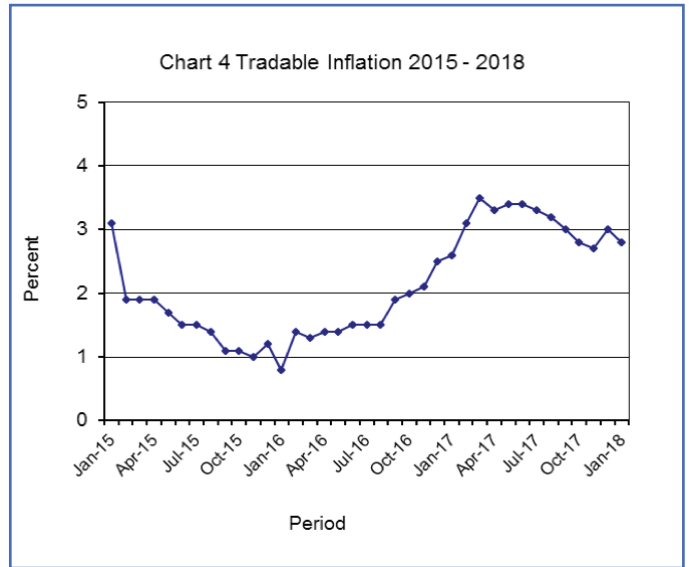
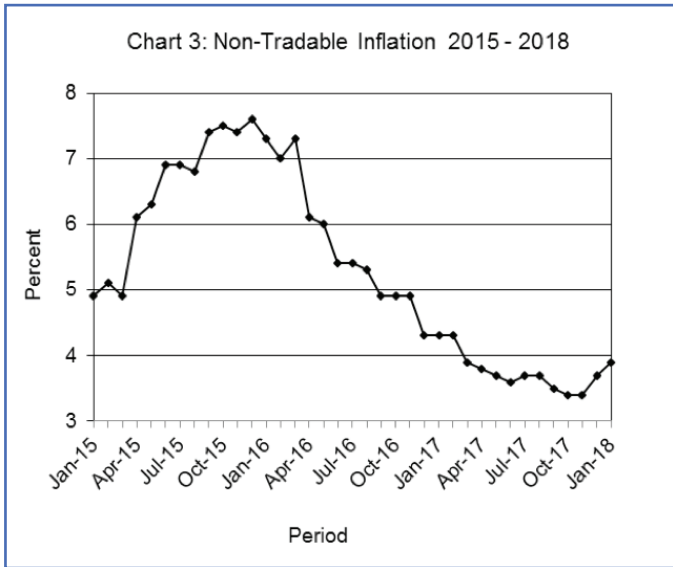
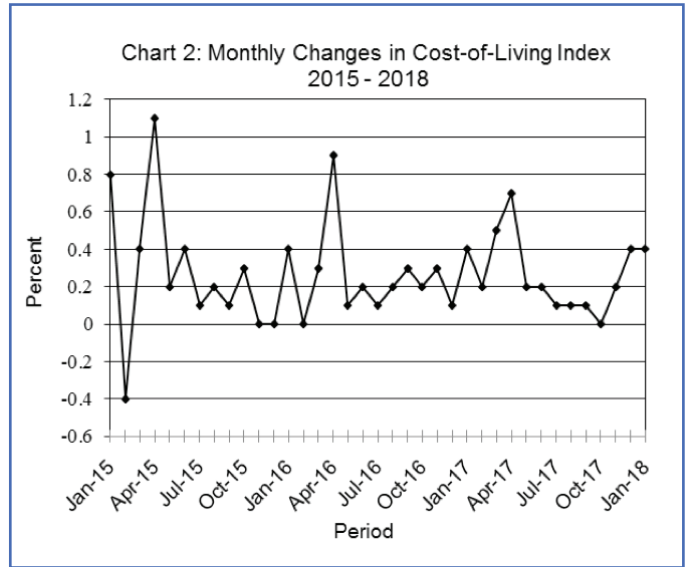
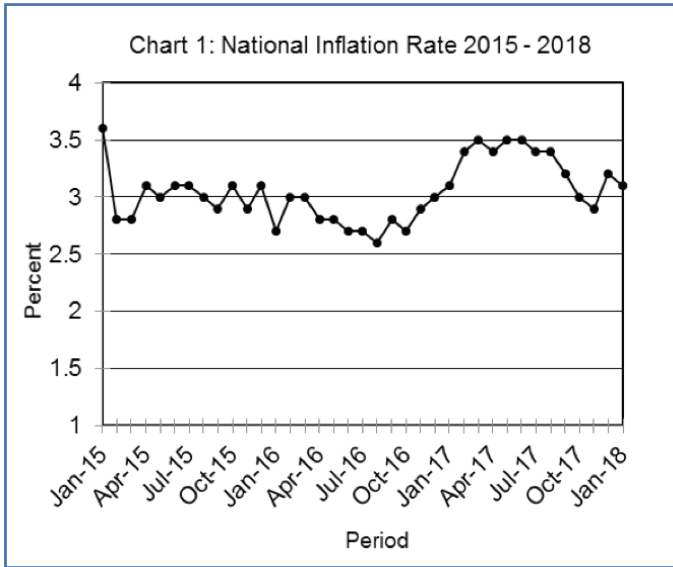
All-Tradable inflation rate was 2.8 percent in January 2018, a decline of 0.2 of a percentage point on the December 2017 rate of 3.0 percent. The Domestic Tradable inflation rate went down from 1.3 percent in December 2017 to 0.5 percent in January 2018. The Non-Tradable inflation rate increased from 3.7 percent in December 2017 to 3.9 percent in January 2018. Imported Tradable inflation rate rose to 3.8 percent from 3.7 percent during the period under review.

The All-Tradable index advanced from 103.7 in December 2017 to 104.0 in January 2018, registering an increase of 0.3 percent. The Non-Tradable index moved from 103.9 in December to 104.4 in January, recording an increase of 0.5 percent. The Domestic Tradable index advanced from 102.3 in December 2017 to 102.7 in January 2018, registering an increase of 0.4 percent, while the Imported Tradable index rose by 0.3 percent moving from 104.3 in December 2017 to 104.6 in January 2018.

Section 2: Core Inflation

The Trimmed Mean Core Inflation rate in January 2018 was 2.8 percent, a drop of 0.1 of a percentage point on the December 2017 rate of 2.9 percent. The Core Inflation rate by exclusion dropped by 0.1 of a percentage point moving from 2.3 percent to 2.2 percent between the two periods.

CHARTS



A.N. Majelantle
 Statistician General
 15 January 2018

TABLES

TABLE 1: COST OF LIVING INDEX (September 2016 =100.0)

		Food	Alcohol and Tobacco	Clothing and Footwear	Housing	Furniture etc	Health	Transport	Com-muni-cation	Rec. & Culture	Edu-cation	Rest. & Hotels	Mis-cella-neous
Weights		16.51	7.83	6.27	14.90	6.39	3.62	20.65	4.27	2.92	3.34	2.76	10.55
2015	Jan	96.5	94.9	89.7	88.4	94.1	94.4	107.0	99.5	92.9	96.4	92.6	87.0
	Feb	96.7	95.8	90.7	88.3	94.9	94.5	102.4	99.5	93.2	96.4	94.0	87.2
	Mar	96.7	96.8	91.4	88.9	95.5	94.6	102.5	99.5	93.3	96.4	94.5	87.2
	Apr	96.7	97.2	91.8	92.2	95.7	94.6	102.7	99.5	97.7	96.4	94.6	92.5
	May	96.7	97.5	92.3	92.1	95.9	96.9	102.7	100.0	97.9	96.4	94.8	92.5
	Jun	96.6	97.6	92.9	93.7	96.6	97.0	102.8	100.0	97.9	96.4	95.4	92.9
	Jul	96.7	97.8	93.3	93.7	96.7	97.3	102.9	100.0	98.1	96.4	95.6	93.0
	Aug	96.9	98.0	94.1	93.8	97.0	97.3	102.9	100.0	98.1	96.5	95.9	93.1
	Sept	97.0	97.3	94.6	96.0	97.6	97.5	101.8	100.0	98.2	96.5	96.2	93.1
	Oct	97.2	98.2	95.2	96.0	97.9	97.5	101.8	100.0	98.4	96.5	97.1	93.2
	Nov	97.2	98.4	95.6	95.9	97.8	97.6	101.8	100.0	98.5	96.5	97.3	93.2
	Dec	97.2	98.5	96.0	97.0	98.1	97.6	100.5	100.0	98.6	96.5	97.6	93.1
2016	Jan	97.6	98.6	96.8	97.1	98.2	97.6	100.5	100.0	98.9	99.9	97.9	93.6
	Feb	98.2	98.7	97.4	96.9	98.3	97.7	99.1	100.0	99.5	99.9	98.2	93.3
	Mar	98.5	98.8	98.0	98.2	98.5	97.8	99.2	100.0	99.6	99.9	98.4	93.5
	Apr	99.3	99.3	98.5	98.2	98.7	98.0	99.5	100.0	99.6	100.0	98.7	99.6
	May	99.4	99.4	98.9	98.2	98.8	99.9	99.5	100.0	99.7	100.0	98.9	99.6
	Jun	99.1	99.6	99.4	99.0	99.3	100.0	99.8	100.0	99.6	100.0	99.2	99.9
	Jul	99.3	99.9	99.6	99.0	99.4	100.0	99.9	100.0	99.7	100.0	99.3	100.0
	Aug	99.7	100.0	99.9	99.0	99.5	100.0	100.0	100.0	99.8	100.0	99.6	100.0
	Sept	100.0	100.0	100.0	100.0	100.0	100.0	100.0	100.0	100.0	100.0	100.0	100.0
	Oct	100.4	100.7	100.2	100.0	100.2	100.0	100.0	100.0	100.2	100.0	100.2	100.4
	Nov	100.9	101.2	100.6	100.1	100.6	100.2	100.1	100.0	100.2	100.0	100.5	100.5
	Dec	101.0	101.3	100.7	100.2	100.8	100.3	100.2	100.0	100.3	100.0	100.6	100.5
2017	Jan	101.9	102.3	101.2	100.4	101.2	100.8	99.7	100.1	100.7	104.0	101.4	100.7
	Feb	102.3	103.0	101.4	100.6	101.7	100.9	99.8	100.1	101.1	104.1	101.7	101.0
	Mar	102.8	103.6	101.7	101.0	102.1	101.1	100.9	100.1	101.3	104.1	102.0	101.4
	Apr	103.1	104.1	101.9	104.8	102.3	101.2	101.0	100.1	102.0	104.1	102.2	101.5
	May	103.4	104.7	102.1	104.9	102.4	101.2	101.1	100.2	102.0	104.1	102.5	101.6
	Jun	103.3	104.7	102.2	105.0	102.7	101.8	101.4	100.3	102.1	104.1	102.8	102.6
	Jul	103.6	104.8	102.6	105.1	102.8	102.0	101.4	100.3	102.2	104.2	103.3	102.6
	Aug	103.5	104.9	102.8	105.2	102.9	102.0	101.6	100.3	102.3	104.2	103.5	102.7
	Sept	102.8	105.0	103.0	105.8	103.1	102.0	101.7	101.3	102.2	104.2	103.7	102.8
	Oct	102.8	104.8	103.1	105.7	103.3	102.1	101.7	101.3	102.3	104.2	104.0	102.8
	Nov	102.6	104.6	103.1	105.7	103.4	102.2	102.7	101.3	102.2	104.2	104.0	102.9
	Dec	102.1	104.7	103.2	106.1	103.2	102.2	104.3	101.2	102.4	104.2	104.6	103.4
2018	Jan	102.3	104.8	103.3	106.2	103.4	102.3	104.7	101.2	102.6	109.8	104.9	103.7
% Change on Last month		0.2	0.0	0.1	0.1	0.2	0.1	0.4	0.0	0.2	5.4	0.3	0.3

TABLE 1: COST OF LIVING INDEX (Cont.)

		All Items Index	National Inflation Rate	Monthly Change	Towns & Cities Index	Urban Village Index	Rural Villages Index	Annual Inflation		
								Towns & Cities	Urban Villages	Rural Villages
		100	%	%	41.8	34.5	23.7	%	%	%
2015	Jan	95.4	3.6	0.8	95.3	95.7	95.0	3.6	3.7	3.7
	Feb	95.0	2.8	(0.4)	94.9	95.2	95.0	2.6	2.9	3.2
	Mar	95.3	2.8	0.4	95.1	95.6	95.4	2.5	2.8	3.6
	Apr	96.4	3.1	1.1	96.5	96.3	96.1	3.1	3.0	3.4
	May	96.5	3.0	0.2	96.5	96.5	96.5	3.0	2.8	3.6
	Jun	96.9	3.1	0.4	96.9	96.9	96.6	3.1	3.0	3.4
	Jul	97.0	3.1	0.1	97.1	97.1	96.7	3.1	3.0	3.5
	Aug	97.2	3.0	0.2	97.2	97.3	96.9	2.8	3.0	3.4
	Sept	97.3	2.9	0.1	97.3	97.4	97.2	2.9	2.8	3.3
	Oct	97.6	3.1	0.3	97.7	97.6	97.2	3.2	3.0	3.1
	Nov	97.6	2.9	0.0	97.7	97.6	97.3	2.9	2.7	3.0
	Dec	97.6	3.1	(0.0)	97.7	97.5	97.4	3.2	2.8	3.4
2016	Jan	97.9	2.7	0.4	97.9	98.1	97.7	2.7	2.6	2.8
	Feb	97.9	3.0	(0.0)	97.7	98.2	97.9	2.9	3.2	3.1
	Mar	98.2	3.0	0.3	98.1	98.6	98.0	3.1	3.2	2.7
	Apr	99.1	2.8	0.9	99.0	99.4	98.7	2.6	3.2	2.7
	May	99.2	2.8	0.1	99.1	99.5	98.9	2.7	3.1	2.5
	Jun	99.4	2.7	0.2	99.4	99.7	99.1	2.5	2.8	2.6
	Jul	99.6	2.7	0.1	99.5	99.7	99.6	2.5	2.7	3.0
	Aug	99.7	2.6	0.2	99.6	99.9	99.8	2.6	2.6	2.9
	Sept	100.0	2.8	0.3	100.0	100.0	100.0	2.8	2.7	2.9
	Oct	100.2	2.7	0.2	100.2	100.2	100.2	2.5	2.7	3.1
	Nov	100.4	2.9	0.3	100.3	100.4	100.7	2.7	2.9	3.5
	Dec	100.5	3.0	0.1	100.5	100.4	100.8	2.8	3.0	3.5
2017	Jan	101.0	3.1	0.4	100.9	100.8	101.3	3.1	2.8	3.6
	Feb	101.2	3.4	0.2	101.1	101.1	101.6	3.5	2.9	3.8
	Mar	101.7	3.5	0.5	101.6	101.6	102.1	3.6	3.0	4.2
	Apr	102.5	3.4	0.7	102.3	102.4	102.8	3.3	3.0	4.2
	May	102.7	3.5	0.2	102.5	102.6	103.0	3.4	3.1	4.1
	Jun	102.9	3.5	0.2	102.8	102.9	103.0	3.4	3.3	3.9
	Jul	103.0	3.4	0.1	102.9	102.9	103.3	3.5	3.2	3.7
	Aug	103.1	3.4	0.1	103.0	103.0	103.4	3.4	3.2	3.6
	Sept	103.2	3.2	0.1	103.2	103.0	103.4	3.2	3.0	3.4
	Oct	103.2	3.0	0.0	103.2	102.9	103.5	3.0	2.7	3.3
	Nov	103.4	2.9	0.2	103.4	103.0	103.7	3.1	2.6	3.0
	Dec	103.7	3.2	0.4	104.0	103.3	103.9	3.6	2.9	3.1
2018	Jan	104.1	3.1	0.4	104.5	103.7	104.1	3.6	2.9	2.8
% Change on last month		0.4			0.4	0.4	0.2			

TABLE 2 :National Cost-of-Living Group and Section Indices (September 2016=100.0)

Group Section	Weights	This month Jan 2018	Last month Dec 2017	3 months ago Oct 2017	6 months ago Jul 2017	12 months ago Jan 2017	Percentage Change on:				
							Last month	3 months ago	6 months ago	12 months ago	
1	Food & Non-Alcoholic Beverages	16.51	102.3	102.1	102.8	103.6	101.9	0.2	(0.4)	(1.2)	0.4
1.1	Bread & Cereals	5.27	97.1	97.5	99.1	102.1	101.2	(0.4)	(2.1)	(5.0)	(4.1)
1.2	Meat (Fresh, Chilled & Frozen)	2.66	104.6	104.1	103.7	104.8	102.6	0.5	0.9	(0.2)	1.9
1.3	Fish (Fresh, Chilled & Frozen)	0.17	104.2	104.2	104.9	104.4	100.9	0.1	(0.6)	(0.2)	3.3
1.4	Milk, Cheese & Milk Products	1.49	100.8	101.2	101.0	99.8	99.5	(0.4)	(0.2)	0.9	1.2
1.5	Oils & Fats	0.70	100.3	100.0	100.5	102.5	101.7	0.3	(0.2)	(2.1)	(1.4)
1.6	Fruit	0.86	107.8	106.8	106.6	106.1	106.1	1.0	1.2	1.7	1.6
1.7	Vegetables	1.80	106.2	105.2	105.1	103.8	104.6	0.9	1.0	2.3	1.5
1.8	Sugar, Jam, Honey, Chocolate & Confectionery	1.29	110.7	110.2	110.7	110.3	102.0	0.4	0.0	0.3	8.5
1.9	Food not else where Classified	0.99	101.5	100.6	102.3	101.8	100.4	1.0	(0.8)	(0.3)	1.1
1.10	Coffee, Tea & Cocoa	0.36	113.9	113.5	112.2	110.3	101.5	0.3	1.5	3.3	12.2
1.11	Mineral Waters, Soft Drinks, Fruits & Veg. Juices	0.92	101.4	101.3	102.6	101.9	100.5	0.2	(1.1)	(0.4)	1.0
2	Alcoholic Beverages, Tobacco & Narcotics	7.83	104.8	104.7	104.8	104.8	102.3	0.0	(0.1)	(0.0)	2.4
2.1	Alcoholic Beverages	6.19	104.5	104.5	104.7	104.9	102.6	0.0	(0.2)	(0.4)	1.9
2.2	Tobacco	1.65	105.6	105.6	105.1	104.2	101.2	0.0	0.4	1.4	4.4
3	Clothing and Footwear	6.27	103.3	103.2	103.1	102.6	101.2	0.1	0.2	0.6	2.1
3.1	Clothing	2.42	102.5	102.4	102.5	102.0	100.7	0.0	(0.1)	0.5	1.8
3.2	Other articles of Clothing	1.01	103.2	103.0	102.5	102.0	100.6	0.2	0.7	1.1	2.6
3.3	Cleaning, Repair & Hire	0.99	105.3	105.1	104.9	104.5	102.4	0.1	0.4	0.7	2.8
3.4	Footwear	1.85	103.3	103.1	103.1	102.8	101.4	0.2	0.2	0.5	1.9
4	Housing, Water, Electr. Gas & Other Fuels	14.90	106.2	106.1	105.7	105.1	100.4	0.1	0.5	1.0	5.8
4.1	Rent paid by Tenants	6.25	102.7	102.7	102.2	101.0	100.0	0.0	0.5	1.7	2.7
4.2	Materials for Maintenance & Repair of dwellings	4.29	103.8	103.5	103.1	103.0	101.5	0.3	0.7	0.8	2.3
4.3	Water Supply & Misc. Services	1.50	125.4	125.4	125.4	125.4	100.0	0.0	0.0	0.0	25.4
4.4	Electricity Gas and other Fuels	2.86	107.6	107.3	107.1	106.9	100.1	0.2	0.5	0.6	7.4
5	Furnishing, H/H Equipment & Routine Maintenance	6.39	103.4	103.2	103.3	102.8	101.2	0.2	0.1	0.6	2.2
5.1	Furniture & Furnishing	1.65	103.6	103.5	102.8	102.3	101.3	0.1	0.7	1.3	2.3
5.2	Carpets & Other Floor Coverings	0.24	103.5	103.5	103.8	103.2	101.9	0.0	(0.3)	0.3	1.6
5.3	Household Textiles	0.41	103.4	102.9	102.6	102.1	101.4	0.4	0.8	1.2	2.0
5.4	Household Appliances	0.85	102.6	102.6	103.1	102.5	101.7	0.0	(0.4)	0.1	1.0
5.5	Glassware, Tableware & Household Utensils	0.40	100.5	100.8	101.4	101.1	100.7	(0.3)	(0.9)	(0.7)	(0.2)
5.6	Small Tools, Miscellaneous Accessories	0.06	102.3	102.2	102.2	101.7	100.9	0.1	0.1	0.6	1.4
5.7	Goods & Services for H/hold Maintenance	2.78	104.0	103.6	104.0	103.6	101.0	0.4	0.0	0.4	2.9

TABLE 2 :National Cost-of-Living Group and Section Indices (September 2016=100.0) Cont

Group Section	Weights	This month Jan 2017	Last month Dec 2017	3 months ago Oct 2017	6 months ago Jul 2017	12 months ago Jan 2017	Percentage Change on:				
							Last month	3 months ago	6 months ago	12 months ago	
6	Health	3.62	102.3	102.2	102.1	102.0	100.8	0.1	0.2	0.3	1.4
6.1	Medical Products, App. & Equip.	0.81	105.7	105.4	105.3	105.0	102.9	0.3	0.4	0.6	2.7
6.2	Out-patient Services	0.70	102.4	102.2	101.9	101.5	100.9	0.2	0.5	0.9	1.5
6.3	Hospital Services	2.10	101.0	101.0	101.0	101.0	100.0	0.0	0.0	0.0	1.0
7	Transport	20.65	104.7	104.3	101.7	101.4	99.7	0.4	2.9	3.3	5.0
7.1	Purchase of Vehicles	5.29	102.3	100.9	100.4	99.4	98.1	1.4	1.9	2.8	4.2
7.2	Operation of Personal Transport	11.13	107.4	107.4	102.8	102.6	100.3	0.0	4.5	4.7	7.1
7.3	Transport Services	4.22	100.5	100.5	100.5	100.5	100.0	0.0	0.0	0.0	0.5
8	Communication	4.27	101.2	101.2	101.3	100.3	100.1	0.0	(0.1)	1.0	1.2
8.1	Postal Services	0.15	126.5	126.5	126.5	100.0	100.0	0.0	0.0	26.5	26.5
8.2	Telephone & Telefax Equipment	0.71	102.0	101.7	102.4	101.6	100.4	0.3	(0.4)	0.4	1.6
8.3	Telephone & Telefax Services	3.41	100.0	100.0	100.0	100.0	100.0	(0.0)	(0.0)	(0.0)	(0.0)
9	Recreation & Culture	2.92	102.6	102.4	102.3	102.2	100.7	0.2	0.3	0.4	1.9
9.1	Audio Visual, Photographic & Info. Proce. Equip.	1.96	102.4	102.1	101.9	102.0	101.0	0.2	0.4	0.3	1.4
9.2	Other Recreational Items & Equip.	0.46	101.6	101.5	101.3	100.8	100.3	0.1	0.3	0.8	1.3
9.3	Recreational & Cultural Services	0.37	104.9	104.9	104.9	104.8	100.0	0.0	0.0	0.1	4.9
9.4	Newspapers, Books & Stationary	0.13	104.1	104.0	103.6	102.7	100.3	0.2	0.6	1.4	3.9
10	Education	3.34	109.8	104.2	104.2	104.2	104.0	5.4	5.4	5.4	5.5
10.1	Pre-Primary & Primary Education	0.80	121.8	105.4	105.4	105.3	105.0	15.6	15.6	15.7	16.0
10.2	Secondary & Tertiary Education	2.54	106.0	103.8	103.8	103.8	103.7	2.1	2.1	2.1	2.2
11	Restaurants & Hotels	2.76	104.9	104.6	104.0	103.3	101.4	0.3	0.9	1.5	3.4
11.1	Restaurants, Cafes and the Like	2.31	105.2	105.0	104.3	103.5	101.6	0.2	0.9	1.6	3.5
11.2	Accommodation Services	0.45	103.2	102.6	102.4	102.3	100.6	0.5	0.8	0.9	2.6
12	Miscellaneous Goods & Services	10.55	103.7	103.4	102.8	102.6	100.7	0.3	0.9	1.0	3.0
12.1	Personal Care	1.71	103.6	103.3	104.2	103.8	101.1	0.3	(0.6)	(0.2)	2.4
12.2	Personal Effects N.E.C.	1.24	103.6	103.7	103.8	103.1	101.2	(0.1)	(0.2)	0.5	2.4
12.3	Social Protection	0.07	120.9	102.1	102.1	102.0	102.0	18.5	18.5	18.6	18.6
12.4	Insurance	4.73	102.8	102.5	101.0	101.0	100.7	0.3	1.8	1.8	2.1
12.5	Financial Services	0.79	103.7	103.5	103.2	103.0	100.7	0.3	0.5	0.7	3.0
12.6	Taxes Licences, Fees	2.01	105.4	105.3	105.2	105.1	100.0	0.1	0.2	0.2	5.3
	All-Items Index	100.0	104.1	103.7	103.2	103.0	101.0	0.4	0.9	1.1	3.1

TABLE 3: COST-OF-LIVING INDEX BY TRADABILITY (September 2016 = 100.0)

		All Items		Non-Tradable		Domestic Tradable		Imported Tradable		All Tradable	
		Index	Inflation	Index	Inflation	Index	Inflation	Index	Inflation	Index	Inflation
Weights		100		35.83		20.39		43.77		64.17	
2015	Jan	95.4	3.6	89.8	4.9	95.5	4.2	99.4	2.5	97.9	3.1
	Feb	95.0	2.8	90.0	5.1	96.0	3.4	98.0	0.9	97.2	1.9
	Mar	95.3	2.8	90.4	4.9	96.6	3.6	98.2	1.0	97.6	1.9
	Apr	96.4	3.1	93.0	6.1	96.9	3.5	98.5	0.9	97.9	1.9
	May	96.5	3.0	93.3	6.3	96.9	3.2	98.6	0.8	98.0	1.7
	Jun	96.9	3.1	94.3	6.9	96.9	3.0	98.7	0.6	98.0	1.5
	Jul	97.0	3.1	94.4	6.9	96.9	2.9	99.0	0.7	98.2	1.5
	Aug	97.2	3.0	94.5	6.8	97.0	2.9	99.3	0.6	98.4	1.4
	Sept	97.3	2.9	95.3	7.4	96.6	2.7	99.2	0.2	98.2	1.1
	Oct	97.6	3.1	95.4	7.5	97.3	3.3	99.3	0.2	98.3	1.1
	Nov	97.6	2.9	95.4	7.4	97.4	3.4	99.3	-0.4	98.6	1.0
	Dec	97.6	3.1	96.0	7.6	97.4	3.5	98.9	0.0	98.3	1.2
2016	Jan	97.9	2.7	96.3	7.3	98.0	2.6	99.1	-0.3	98.6	0.8
	Feb	97.9	3.0	96.4	7.0	98.4	2.5	98.8	0.7	98.6	1.4
	Mar	98.2	3.0	96.9	7.3	98.6	2.1	99.0	0.8	98.8	1.3
	Apr	99.1	2.8	98.7	6.1	99.1	2.3	99.4	0.9	99.3	1.4
	May	99.2	2.8	98.9	6.0	99.4	2.5	99.4	0.8	99.4	1.4
	Jun	99.4	2.7	99.4	5.4	99.3	2.5	99.6	0.9	99.5	1.5
	Jul	99.6	2.7	99.4	5.4	99.5	2.8	99.7	0.7	99.6	1.5
	Aug	99.7	2.6	99.5	5.3	99.9	3.0	99.9	0.6	99.9	1.5
	Sept	100.0	2.8	100.0	4.9	100.0	3.5	100.0	0.9	100.0	1.9
	Oct	100.2	2.7	100.1	4.9	100.3	3.1	100.2	0.9	100.2	1.9
	Nov	100.4	2.9	100.1	4.9	100.7	3.4	100.5	1.2	100.6	2.1
	Dec	100.5	3.0	100.1	4.3	100.9	3.6	100.6	1.8	100.7	2.5
2017	Jan	101.0	3.1	100.4	4.3	102.2	4.3	100.8	1.7	101.2	2.6
	Feb	101.2	3.4	100.5	4.3	102.7	4.3	101.1	2.4	101.6	3.1
	Mar	101.7	3.5	100.8	3.9	103.1	4.6	101.8	2.9	102.2	3.5
	Apr	102.5	3.4	102.4	3.8	103.4	4.3	102.1	2.7	102.5	3.3
	May	102.7	3.5	102.6	3.7	103.7	4.3	102.3	2.9	102.7	3.4
	Jun	102.9	3.5	103.0	3.6	103.5	4.2	102.5	2.9	102.8	3.4
	Jul	103.0	3.4	103.1	3.7	103.4	3.8	102.7	3.0	103.0	3.3
	Aug	103.1	3.4	103.1	3.7	103.2	3.4	103.0	3.1	103.1	3.2
	Sept	103.2	3.2	103.5	3.5	102.6	2.6	103.1	3.1	103.0	3.0
	Oct	103.2	3.0	103.5	3.4	102.5	2.2	103.2	3.0	103.0	2.8
	Nov	103.4	2.9	103.5	3.4	102.3	1.6	103.6	3.1	103.3	2.7
	Dec	103.7	3.2	103.9	3.7	102.3	1.3	104.3	3.7	103.7	3.0
2018	Jan	104.1	3.1	104.4	3.9	102.7	0.5	104.6	3.8	104.0	2.8
% Change on last month		0.4		0.5		0.4		0.3		0.3	

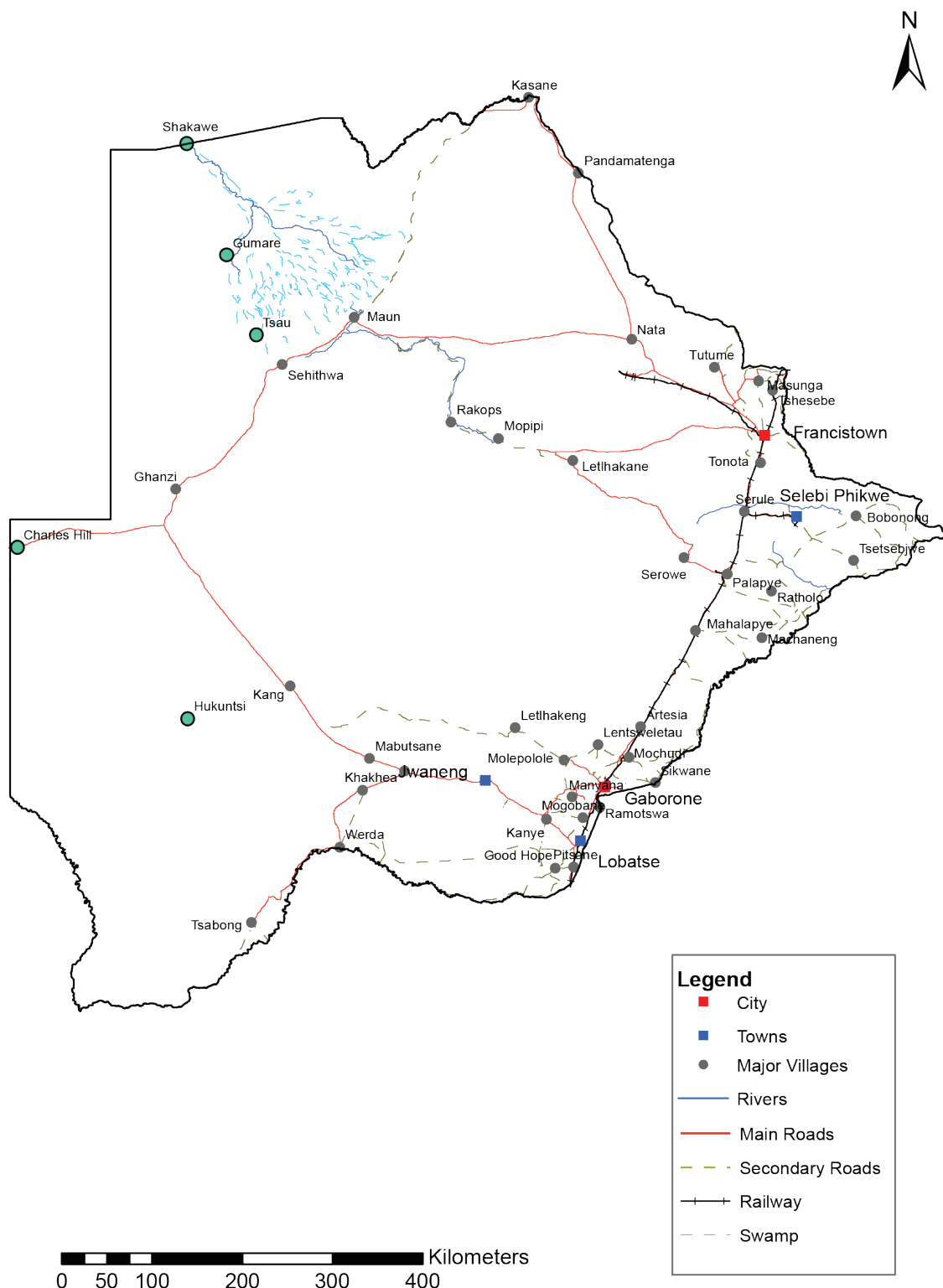
TABLE 4: Core Inflation Rates by Exclusion and Trimmed Mean

Year	Month	Consumer Price Index (Trimmed Mean) (September 2016 = 100)	Core Monthly Inflation Rate (Trimmed Mean) (percentage)	Consumer Price Index (Excluding Administered Prices) (September 2016 = 100)	Core Monthly Inflation (Excluding Administered Prices) (percentage)
2015					
	Jan	92.6	3.6	93.7	4.8
	Feb	92.7	3.2	94.3	4.8
	Mar	93.0	3.3	94.7	4.8
	Apr	95.5	3.6	95.3	4.8
	May	95.7	3.5	95.4	4.7
	Jun	96.1	3.6	95.8	4.7
	Jul	96.1	3.6	96.0	4.7
	Aug	96.4	3.5	96.2	4.6
	Sept	96.8	3.4	96.6	4.8
	Oct	97.1	3.6	96.9	5.0
	Nov	97.1	3.3	97.0	4.7
	Dec	97.0	3.2	97.1	4.5
2016					
	Jan	97.5	2.8	97.5	4.0
	Feb	97.7	2.6	97.8	3.7
	Mar	97.9	2.5	98.1	3.7
	Apr	98.5	2.4	98.9	3.9
	May	98.7	2.3	99.1	3.8
	Jun	98.7	2.4	99.3	3.6
	Jul	99.5	2.5	99.5	3.6
	Aug	99.7	2.4	99.7	3.6
	Sept	100.0	2.6	100.0	3.6
	Oct	100.2	2.2	100.2	3.4
	Nov	100.4	2.5	100.6	3.7
	Dec	100.5	2.5	100.7	3.7
2017					
	Jan	101.0	2.7	101.3	3.9
	Feb	101.1	2.9	101.6	3.9
	Mar	101.7	3.1	102.0	3.9
	Apr	102.0	3.1	102.2	3.3
	May	102.1	3.1	102.5	3.4
	Jun	102.4	2.9	102.6	3.3
	Jul	102.5	2.9	102.8	3.3
	Aug	102.6	2.9	102.9	3.3
	Sept	102.7	2.7	103.0	3.0
	Oct	102.7	2.6	103.0	2.8
	Nov	103.0	2.5	103.0	2.4
	Dec	103.5	2.9	103.0	2.3
2018					
	Jan	103.8	2.8	103.5	2.2

Table 5: Average Annual Inflation (September 2016=100)

Group		Weights	2007	2008	2009	2010	2011	2012	2013	2014	2015	2016	2017
1	Food & Non-Alcoholic Beverages	16.51	11.2	20.2	14.7	3.6	6.9	8.0	5.4	3.0	1.3	2.7	3.4
2	Alcoholic Beverages, Tobacco & Narcotics	7.83	10.1	13.2	35.2	7.1	8.4	7.6	10.3	9.0	6.1	2.5	4.5
3	Clothing and Footwear	6.27	1.6	2.0	8.4	8.0	8.9	7.5	6.3	6.0	7.6	6.5	3.2
4	Housing, Water, Electr. Gas & Other Fuels	14.90	4.7	8.1	4.8	6.4	8.4	7.7	4.3	3.9	7.1	6.3	5.4
5	Furnishing, H/H Equipment & Routine Maintenance	6.39	4.9	6.0	11.9	9.4	9.0	7.3	4.9	5.0	6.1	3.0	3.3
6	Health	3.62	12.5	11.3	5.5	2.7	4.5	5.9	5.5	8.3	6.3	3.0	2.4
7	Transport	20.65	7.9	21.2	(8.4)	12.1	13.2	10.8	7.3	1.2	(5.1)	(2.7)	1.6
8	Communication	4.27	(5.1)	(0.3)	(0.3)	1.2	(3.0)	(1.4)	0.3	0.3	0.3	0.2	0.5
9	Recreation & Culture	2.92	(1.8)	2.3	5.0	6.0	8.3	5.8	4.5	4.2	5.7	3.0	2.2
10	Education	3.34	6.0	3.9	3.9	5.8	10.6	6.4	4.7	7.4	6.4	3.7	4.1
11	Restaurants & Hotels	2.76	15.1	12.7	18.8	9.0	9.3	8.4	7.9	7.6	5.5	4.0	3.7
12	Miscellaneous Goods & Services	10.55	4.3	4.9	3.8	7.0	5.3	2.0	1.2	5.2	7.2	7.5	3.9
All-Items Index		100.0	7.1	12.6	8.2	6.9	8.5	7.5	5.9	4.4	3.1	2.8	3.3

CPI AREA COVERAGE



GLOSSARY

Consumer Price Index (CPI) is an index which measures price changes in goods and services with reference to a base period.

Inflation is a measurement of prices movement of goods and services in a particular country.

Domestic Tradable refers to the goods and services which a country (Botswana) can export to other countries.

Imported Tradable represents the goods and services which a country (Botswana) imports from other countries (trading partners).

Non-Tradable refers to the goods and services which a country cannot export or import to other countries.

All –Tradable refers to the total of Domestic and Imported tradable.

Trimmed Mean Core Inflation- attempts to remove 8 percent (by weight) of the commodity sub-groups with the largest price changes at each of the ends of an ordered series of price changes in any given month.

Core inflation by Exclusion is a measure used to remove the volatility inherent in prices that are only adjusted periodically and not always in response to currently prevailing market forces.

Consumer Price Index

January 2018

