

# Consumer Price Index

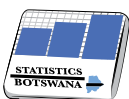
August 2020

Private Bag 47  
Maun  
**Tel:** 371 5716  
**Fax:** 686 4327

Private Bag 32  
Ghanzi  
**Tel:** 371 5723  
**Fax:** 659 7506

Private Bag F193,  
City of Francistown  
**Tel:** 241 5848,  
**Fax:** 241 7540

Private Bag 0024, Gaborone  
**Tel:** 3671300  
**Fax:** 3952201  
**Toll Free:** 0800 600 200



**STATISTICS BOTSWANA**

**E-mail:** [info@statsbots.org.bw](mailto:info@statsbots.org.bw)  
**Website:** <http://www.statsbots.org.bw>

**Contact Statistician:**  
Phaladi Labobedi

## CONTENTS

<b>SECTION 1: CORONAVIRUS (COVID-19) PANDEMIC AND CPI COMPILATION</b> .....	1
<b>SECTION 2: HEADLINE INFLATION</b> .....	1
<b>SECTION 3: CORE INFLATION</b> .....	2
<b>GLOSSARY</b> .....	13

## CHARTS

<b>CHART 1: NATIONAL RATES OF INFLATION</b> .....	2
<b>CHART 2: MONTHLY CHANGES IN THE CONSUMER PRICE INDEX</b> .....	2
<b>CHART 3: NON-TRADEABLES INFLATION RATES</b> .....	2
<b>CHART 4: TRADEABLES INFLATION RATES</b> .....	2
<b>CHART 5: CONTRIBUTIONS OF GROUPS TO ANNUAL INFLATION RATE</b> .....	3

## TABLES

<b>TABLE 1: CONTRIBUTIONS OF GROUPS TO ANNUAL INFLATION RATE</b> .....	4
<b>TABLE 2: CONSUMER PRICE INDEX (DECEMBER 2018 =100.0)</b> .....	5
<b>TABLE 3: NATIONAL CONSUMER PRICE GROUP &amp; SECTION INDICES (DECEMBER 2018 = 100.0)</b> .....	7
<b>TABLE 4: AVERAGE ANNUAL INFLATION (DECEMBER 2018 = 100.0)</b> .....	9
<b>TABLE 5: CONSUMER PRICE INDEX BY TRADEABILITY (DECEMBER 2018 = 100.0)</b> .....	10
<b>TABLE 6: CORE INFLATION RATES BY EXCLUSION AND TRIMMED MEAN</b> .....	11

## COMMENTARY

### SECTION 1: CORONAVIRUS (COVID-19) PANDEMIC AND CPI COMPILATION

Data collection for August 2020 was conducted through telephone and physical visits. All outlets from which CPI basket prices are collected were fully operational during the month of August 2020, except for those trading on Alcoholic beverages which were closed from 31<sup>st</sup> July 2020 for Greater Gaborone Zone and from the 5<sup>th</sup> of August 2020 across the country. The information on international airfares was also not available due to the COVID-19 restrictions. Thus the missing prices for Alcoholic beverages were imputed using the geometric mean of price relatives of Alcoholic Beverages that were collected from 1<sup>st</sup> to 5<sup>th</sup> of August 2020 outside the Greater Gaborone Zone. The missing international airfares were imputed using the geometric mean of price relatives (variation) of the observed domestic airfares. This is in accordance with the international Consumer Price Index (CPI) methodological (imputation) techniques as stipulated by the International Monetary Fund (IMF).

### SECTION 2: HEADLINE INFLATION

The annual inflation rate in August 2020 was 1.0 percent, registering an increase of 0.1 of a percentage point on the July rate of 0.9 percent. The major contributors to the August annual inflation rate were; Transport (-1.6 percent), Housing, Water, Electricity, Gas & Other Fuels (1.1 percent) and Food & Non-Alcoholic Beverages (0.6 of a percent). [Refer to Table 1.](#)

The inflation rates for regions between July and August 2020 indicated that the Cities & Towns' rate moved from 0.9 percent to 1.0 percent, registering an increase of 0.1 of a percentage point. The Rural Villages' rate went up by 0.1 of a percentage point, from 0.6 percent in July to 0.7 percent in August. The Urban Villages' inflation rate remained unchanged at 1.1 percent. [Refer to Table 2.](#)

The national Consumer Price Index was 102.8 in August 2020, recording an increase of 0.2 percent, from 102.6 recorded in July 2020. The Cities & Towns index moved from 102.7 in July to 102.8 in August, registering an increase of 0.2 percent. The Urban Villages index recorded an increase of 0.2 percent over the two months, moving from 102.9 in July to 103.1 in August. The Rural Villages Index rose by 0.2 percent, from 101.8 in July to 102.0 in August. [Refer to Table 2.](#)

Group indices were generally moving at a steady pace between July and August 2020, recording changes of less than 1.0 percent [Refer to Table 3.](#)

Food & Non-Alcoholic Beverages group index rose by 0.3 percent, from 106.1 to 106.5 over the two periods. This was owed to the increase in most constituent section indices, particularly; Bread & Cereals (1.1 percent), Oils & Fats (0.6 percent) and Vegetables (0.5 percent).

The Housing, Water, Electricity, Gas & Other Fuels group index rose by 0.3 percent, from 106.9 to 107.2 over the two months. This was attributed to the rise in the constituent section indices, notably; Materials for Maintenance & Repair of Dwellings (1.2 percent).

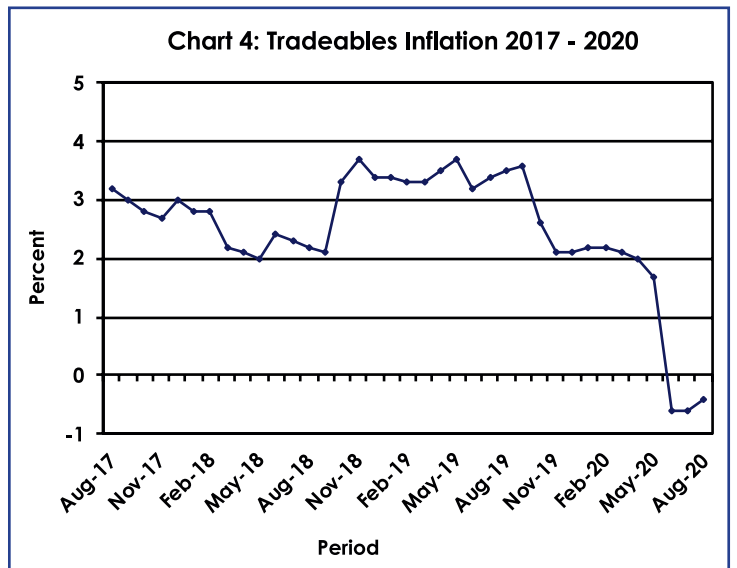
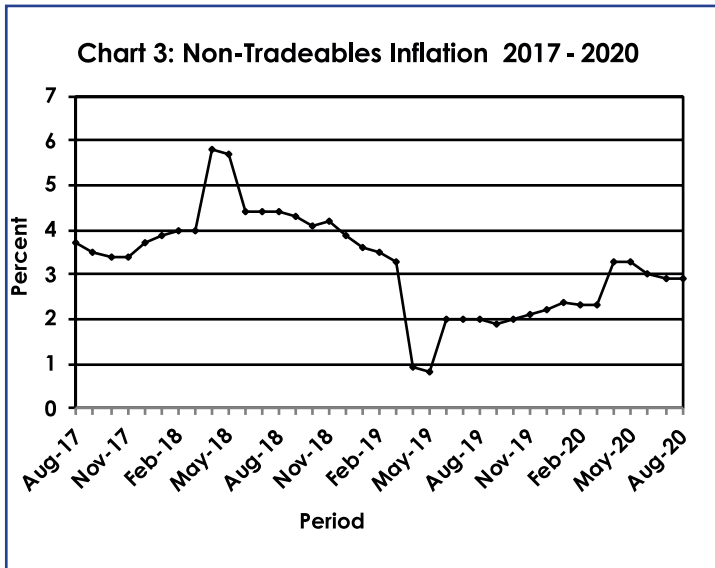
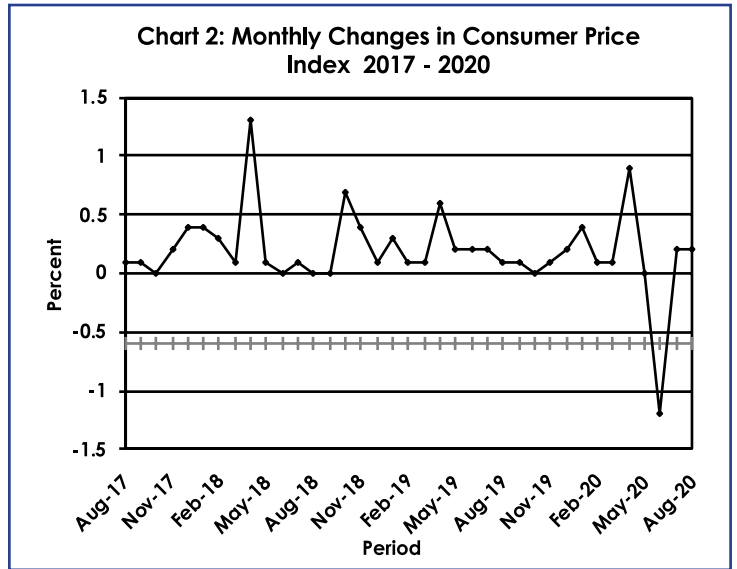
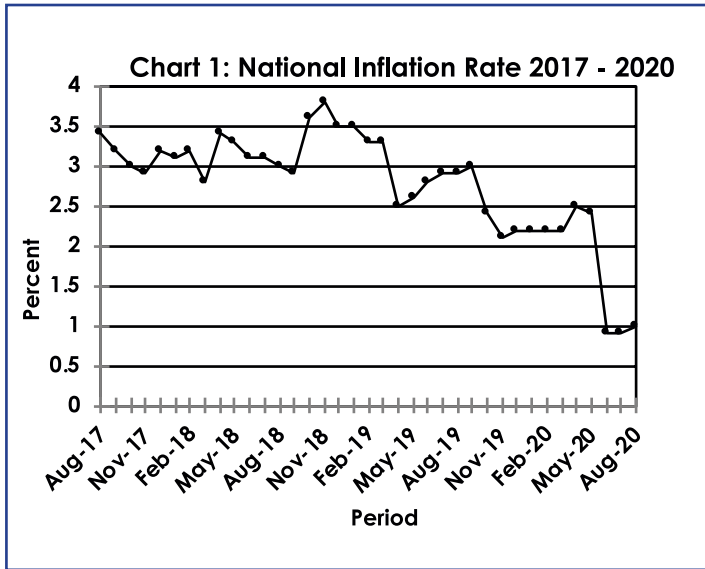
The All-Tradeables index was 101.3 in August 2020, registering an increase of 0.3 percent from 101.0 recorded in July 2020. The Domestic Tradeables Index realized a rise of 0.4 percent, moving from 108.1 in July to 108.5 in August. The Imported Tradeables Index rose by 0.2 percent, from 98.5 in July to 98.7 in August 2020. The Non-Tradeables Index was 104.7 in August, the same rate as in July 2020. [Refer to Table 5.](#)

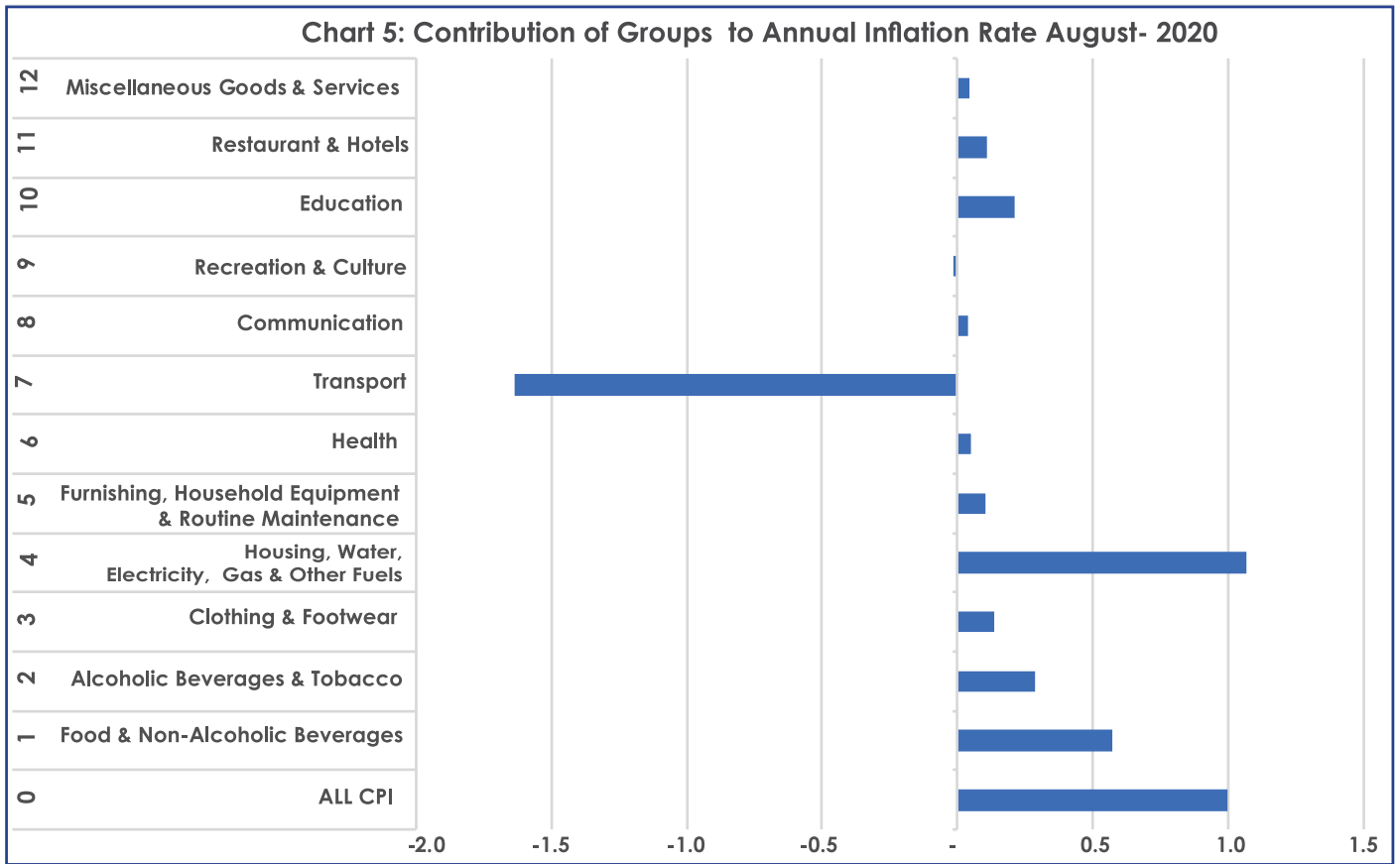
All-Tradeables inflation rate was -0.4 percent in August 2020, registering an increase of 0.2 of a percentage point on the July rate of -0.6 percent. The Domestic Tradeables inflation was 5.4 percent in August, an increase of 0.2 of a percentage point from 5.2 percent recorded in July. The Imported Tradeables inflation rose by 0.2 of a percentage point, from -2.7 percent to -2.5 percent during the period under review. The Non-Tradeables inflation rate remained constant at 2.9 percent.

**SECTION 3: CORE INFLATION**

The Trimmed Mean Core Inflation rate was 1.1 percent in August, registering an increase of 0.1 of a percentage point moving from 1.0 percent recorded in July 2020. The Core Inflation rate recorded a rise of 0.1 of a percentage point moving from 2.8 percent in July to 2.9 percent in August 2020. [Refer to Table 6.](#)

**CHARTS**





*BS*  
 Dr. Burton S. Mguni  
 Statistician General  
 15<sup>th</sup> September 2020

## TABLES

**TABLE 1: Contributions of Groups to Annual Inflation Rate**

Group Code	Group Name	CONTRIBUTIONS		
		June-20	July-20	Aug-20
0	All Items Inflation Rate	0.9	0.9	1.0
1	Food & Non-Alcoholic Beverages	0.5	0.5	0.6
2	Alcoholic Beverages & Tobacco	0.2	0.3	0.3
3	Clothing & Footwear	0.1	0.1	0.1
4	Housing, Water, Electricity, Gas & Other Fuels	1.0	1.0	1.1
5	Furnishing, Household Equipment & Routine Maintenance	0.1	0.1	0.1
6	Health	0.0	0.0	0.0
7	Transport	-1.6	-1.6	-1.6
8	Communication	0.0	0.0	0.0
9	Recreation & Culture	-0.0	-0.0	-0.0
10	Education	0.2	0.2	0.2
11	Restaurants & Hotels	0.1	0.1	0.1
12	Miscellaneous Goods & Services	0.1	0.0	0.0

**TABLE 2 : CONSUMER PRICE INDEX (DECEMBER 2018 =100.0)**

		Food	Alcohol and Tobacco	Clothing and Footwear	Housing	Furniture etc	Health	Transport	Communi-cation	Rec. & Culture	Education	Rest. & Hotels	Miscella-neous
Weights		13.55	4.34	5.95	17.45	4.85	3.38	23.43	6.94	2.82	4.60	3.66	9.01
<b>2017</b>	Jan	100.0	96.8	96.5	91.5	96.1	97.6	86.8	108.9	96.8	94.7	94.2	91.5
	Feb	100.4	97.4	96.8	91.6	96.5	97.7	87.0	108.9	97.2	94.7	94.4	91.7
	Mar	100.9	97.9	97.0	92.0	96.9	97.8	87.9	108.9	97.4	94.7	94.8	92.0
	Apr	101.1	98.5	97.2	95.5	97.0	97.9	88.0	108.9	98.1	94.7	95.0	92.2
	May	101.5	99.0	97.4	95.5	97.2	98.0	88.1	109.0	98.1	94.7	95.3	92.3
	Jun	101.4	99.0	97.5	95.7	97.4	98.6	88.3	109.2	98.2	94.8	95.5	93.2
	Jul	101.6	99.1	97.9	95.8	97.6	98.7	88.3	109.2	98.3	94.8	95.9	93.2
	Aug	101.5	99.2	98.1	95.8	97.7	98.8	88.5	109.2	98.4	94.8	96.2	93.2
	Sept	100.9	99.3	98.3	96.4	97.9	98.8	88.6	110.3	98.3	94.8	96.4	93.3
	Oct	100.8	99.1	98.4	96.3	98.0	98.8	88.6	110.3	98.4	94.9	96.6	93.4
	Nov	100.7	99.0	98.4	96.3	98.1	98.9	89.4	110.3	98.3	94.9	96.6	93.4
	Dec	100.2	99.1	98.5	96.7	97.9	98.9	90.9	110.1	98.5	94.9	97.1	93.9
<b>2018</b>	Jan	100.4	99.1	98.6	96.8	98.1	99.0	91.2	110.2	98.7	99.9	97.4	94.2
	Feb	100.8	99.2	98.7	96.9	98.4	99.1	91.5	110.2	99.0	99.9	97.8	94.7
	Mar	100.9	99.3	98.9	97.2	99.0	99.2	91.4	110.3	99.4	100.0	97.9	94.9
	Apr	101.0	99.2	99.3	98.6	99.1	99.2	93.5	110.3	100.0	100.0	98.4	100.0
	May	100.9	99.5	99.5	98.7	99.2	99.4	93.6	110.3	100.1	100.0	98.6	100.1
	Jun	100.7	99.7	99.6	99.2	99.5	99.4	95.0	100.2	100.1	100.0	99.0	100.2
	Jul	100.5	99.9	99.9	99.2	99.6	99.5	95.1	100.2	100.2	100.0	99.4	100.3
	Aug	100.2	100.1	99.8	99.3	99.6	99.5	95.2	100.2	100.2	100.0	99.5	100.3
	Sept	99.9	100.1	99.8	99.7	100.0	99.7	95.0	100.2	100.2	100.0	99.7	100.2
	Oct	99.8	100.2	99.7	99.7	100.0	99.8	98.4	100.2	99.8	100.0	99.7	99.8
	Nov	99.9	100.2	99.8	99.9	100.1	99.9	99.8	100.2	99.9	100.0	99.7	99.8
	Dec	100.0	100.0	100.0	100.0	100.0	100.0	100.0	100.0	100.0	100.0	100.0	100.0
<b>2019</b>	Jan	100.4	99.8	100.2	100.1	100.2	100.1	100.3	100.0	100.1	103.0	100.0	100.3
	Feb	100.6	99.6	100.2	100.1	100.4	100.2	100.6	100.0	100.1	103.1	100.1	100.6
	Mar	101.0	99.9	100.3	100.3	100.6	100.3	100.5	100.0	100.4	103.1	100.6	100.4
	Apr	101.4	101.2	100.4	100.3	100.7	100.3	100.7	100.0	100.2	103.1	100.8	104.9
	May	102.0	102.4	100.5	100.4	100.8	100.4	100.8	100.0	100.2	103.1	101.1	104.9
	Jun	102.0	103.2	100.7	100.9	101.6	100.5	100.6	100.1	100.2	103.1	101.3	105.0
	Jul	102.1	103.5	100.8	101.0	101.8	100.6	100.9	100.1	100.3	103.1	101.6	105.4
	Aug	102.1	103.6	101.0	101.1	101.8	100.7	101.0	100.2	100.3	103.1	101.8	105.3
	Sept	102.4	103.8	101.0	101.2	102.1	100.6	100.9	100.2	100.3	103.1	102.1	105.3
	Oct	102.3	104.1	101.1	101.3	102.2	100.7	101.0	100.3	100.0	103.1	102.3	105.2
	Nov	102.5	104.2	101.3	101.3	102.4	100.8	101.2	100.4	100.0	103.1	102.4	105.3
	Dec	103.0	104.4	101.3	101.5	102.7	100.8	101.3	100.4	99.8	103.1	102.9	105.3
<b>2020</b>	Jan	103.7	104.5	101.7	101.6	103.0	101.0	101.3	100.4	99.8	107.9	103.7	105.5
	Feb	104.2	104.6	101.8	101.7	103.3	101.0	101.4	100.3	100.0	108.0	103.9	105.6
	Mar	104.4	104.7	102.0	101.9	103.5	101.1	101.3	100.3	100.0	108.0	104.2	105.4
	Apr	104.6	104.8	102.1	106.5	103.7	101.5	101.3	100.3	99.7	108.0	104.4	106.1
	May	105.2	104.8	102.4	106.6	103.7	101.7	100.7	100.4	99.5	108.0	104.7	106.2
	Jun	105.7	108.7	102.9	106.7	103.9	102.0	93.9	100.5	99.5	108.0	104.8	106.2
	Jul	106.1	110.3	103.2	106.9	103.7	102.0	93.9	100.6	99.6	108.0	104.8	105.9
	Aug	106.5	110.4	103.3	107.2	104.0	102.1	94.0	100.8	99.8	108.0	104.8	105.8
<b>% Change on</b>													
<b>Last month</b>													
		<b>0.3</b>	<b>0.1</b>	<b>0.1</b>	<b>0.3</b>	<b>0.3</b>	<b>0.1</b>	<b>0.1</b>	<b>0.2</b>	<b>0.2</b>	<b>0.0</b>	<b>0.0</b>	<b>(0.1)</b>

TABLE 2: CONSUMER PRICE INDEX (Cont.)

		All Items Index	National Inflation Rate	Monthly Change	Towns & Cities Index	Urban Village Index	Rural Villages Index	Annual Inflation		
								Towns & Cities	Urban Villages	Rural
		100.0	%	%	0.38	0.41	0.21	%	%	%
<b>2017</b>	Jan	94.0	3.1	0.4	93.1	94.3	95.1	3.1	2.8	3.6
	Feb	94.2	3.4	0.2	93.3	94.6	95.5	3.5	2.9	3.8
	Mar	94.7	3.5	0.5	93.8	95.0	95.9	3.6	3.0	4.2
	Apr	95.4	3.4	0.7	94.4	95.8	96.5	3.3	3.0	4.2
	May	95.6	3.5	0.2	94.6	96.0	96.8	3.4	3.1	4.1
	Jun	95.8	3.5	0.2	94.8	96.2	96.8	3.4	3.3	3.9
	Jul	95.9	3.4	0.1	95.0	96.3	97.0	3.5	3.2	3.7
	Aug	96.0	3.4	0.1	95.0	96.4	97.1	3.4	3.2	3.6
	Sept	96.1	3.2	0.1	95.2	96.3	97.2	3.2	3.0	3.4
	Oct	96.1	3.0	0.0	95.2	96.2	97.3	3.0	2.7	3.3
	Nov	96.2	2.9	0.2	95.5	96.4	97.4	3.1	2.6	3.0
	Dec	96.6	3.2	0.4	96.0	96.6	97.6	3.6	2.9	3.1
<b>2018</b>	Jan	97.0	3.1	0.4	96.4	97.0	97.8	3.6	2.9	2.8
	Feb	97.2	3.2	0.3	96.7	97.3	98.1	3.6	2.9	2.7
	Mar	97.4	2.8	0.1	96.8	97.5	98.1	3.3	2.6	2.3
	Apr	98.7	3.4	1.3	98.4	98.7	99.1	4.2	3.1	2.7
	May	98.7	3.3	0.1	98.5	98.8	99.1	4.1	3.0	2.5
	Jun	98.8	3.1	0.0	98.6	98.8	99.0	4.0	2.7	2.3
	Jul	98.8	3.1	0.1	98.7	98.9	99.1	3.9	2.7	2.1
	Aug	98.8	3.0	(0.0)	98.6	98.9	99.1	3.8	2.6	2.0
	Sept	98.9	2.9	0.0	98.7	98.9	99.1	3.6	2.7	2.0
	Oct	99.5	3.6	0.7	99.5	99.5	99.7	4.4	3.4	2.5
	Nov	99.9	3.8	0.4	99.9	99.8	100.0	4.7	3.6	2.6
	Dec	100.0	3.5	0.1	100.0	100.0	100.0	4.2	3.5	2.5
<b>2019</b>	Jan	100.3	3.5	0.3	100.4	100.3	100.2	4.1	3.4	2.4
	Feb	100.5	3.3	0.1	100.6	100.5	100.3	4.0	3.2	2.3
	Mar	100.6	3.3	0.1	100.6	100.6	100.3	3.9	3.2	2.2
	Apr	101.2	2.5	0.6	101.2	101.3	100.8	2.9	2.6	1.7
	May	101.3	2.6	0.2	101.4	101.5	100.9	2.9	2.7	1.8
	Jun	101.5	2.8	0.2	101.6	101.6	101.1	3.0	2.9	2.1
	Jul	101.7	2.9	0.2	101.8	101.8	101.2	3.1	3.0	2.1
	Aug	101.7	2.9	0.1	101.8	101.9	101.3	3.2	3.1	2.2
	Sept	101.8	3.0	0.1	101.9	102.0	101.4	3.2	3.1	2.3
	Oct	101.9	2.4	0.0	102.0	102.0	101.4	2.5	2.5	1.8
	Nov	102.0	2.1	0.1	102.1	102.1	101.5	2.2	2.3	1.5
	Dec	102.2	2.2	0.2	102.3	102.3	101.6	2.3	2.3	1.6
<b>2020</b>	Jan	102.6	2.2	0.4	102.8	102.6	102.0	2.4	2.3	1.8
	Feb	102.7	2.2	0.1	102.9	102.8	102.1	2.3	2.3	1.9
	Mar	102.8	2.2	0.1	102.9	102.9	102.3	2.3	2.3	2.0
	Apr	103.7	2.5	0.9	103.9	103.9	103.0	2.7	2.6	2.3
	May	103.7	2.4	0.0	103.9	103.8	103.1	2.5	2.3	2.2
	Jun	102.4	0.9	(1.2)	102.6	102.7	101.5	1.0	1.1	0.4
	Jul	102.6	0.9	0.2	102.7	102.9	101.8	0.9	1.1	0.6
	Aug	102.8	1.0	0.2	102.8	103.1	102.0	1.0	1.1	0.7
<b>% Change on Last month</b>		<b>0.2</b>			<b>0.2</b>	<b>0.2</b>	<b>0.2</b>			



**TABLE 3: NATIONAL CONSUMER PRICE GROUP AND SECTION INDICES (DECEMBER 2018=100.0)**

	Group Section	Weights	This month Aug 2020	Last month Jul 2020	3 months ago May 2020	6 months ago Feb 2020	12 months ago JAug 2019	Percentage Change on:			
								Last month	3 months ago	6 months ago	12 months ago
<b>1</b>	<b>Food &amp; Non-Alcoholic Beverages</b>	<b>13.55</b>	<b>106.5</b>	<b>106.1</b>	<b>105.2</b>	<b>104.2</b>	<b>102.1</b>	<b>0.3</b>	<b>1.2</b>	<b>2.2</b>	<b>4.2</b>
1.1	Bread & Cereals	4.26	109.1	107.9	105.3	104.8	102.9	1.1	3.6	4.2	6.0
1.2	Meat (Fresh, Chilled & Frozen)	2.36	111.0	111.5	111.8	108.5	102.0	(0.5)	(0.8)	2.3	8.8
1.3	Fish (Fresh, Chilled & Frozen)	0.18	101.9	102.5	103.7	105.6	103.3	(0.6)	(1.7)	(3.5)	(1.4)
1.4	Milk, Cheese & Milk Products	0.98	104.1	103.8	104.0	102.3	102.3	0.3	0.1	1.8	1.8
1.5	Oils & Fats	0.92	101.0	100.4	99.7	101.0	100.5	0.6	1.3	0.0	0.5
1.6	Fruits	0.78	107.5	108.6	110.5	105.6	101.7	(1.0)	(2.7)	1.8	5.7
1.7	Vegetables	1.08	104.7	104.2	102.0	103.1	103.4	0.5	2.7	1.6	1.3
1.8	Sugar, Jam, Honey, Chocolate & Confectionery	1.11	99.5	99.4	99.2	98.8	99.1	0.1	0.4	0.8	0.4
1.9	Food Not Elsewhere Classified	0.54	104.4	104.5	105.0	104.0	103.6	(0.2)	(0.6)	0.3	0.7
1.10	Coffee, Tea & Cocoa	0.73	103.6	103.4	102.9	102.3	101.4	0.2	0.6	1.3	2.2
1.11	Mineral Waters, Soft Drinks, Fruits & Vegetables Juices	0.62	103.4	103.5	103.1	103.1	102.5	(0.1)	0.3	0.3	0.9
<b>2</b>	<b>Alcoholic Beverages &amp; Tobacco</b>	<b>4.34</b>	<b>110.4</b>	<b>110.3</b>	<b>104.8</b>	<b>104.6</b>	<b>103.6</b>	<b>0.1</b>	<b>5.3</b>	<b>5.5</b>	<b>6.6</b>
2.1	Alcoholic Beverages	3.51	110.6	110.6	104.8	104.7	103.7	0.0	5.5	5.6	6.7
2.2	Tobacco	0.82	109.5	109.0	104.9	104.4	103.3	0.5	4.4	4.9	6.0
<b>3</b>	<b>Clothing &amp; Footwear</b>	<b>5.95</b>	<b>103.3</b>	<b>103.2</b>	<b>102.4</b>	<b>101.8</b>	<b>101.0</b>	<b>0.1</b>	<b>0.8</b>	<b>1.4</b>	<b>2.3</b>
3.1	Clothing	2.60	103.7	103.6	103.1	102.2	101.4	0.1	0.6	1.4	2.3
3.2	Other Articles of Clothing	0.72	103.1	102.8	102.2	101.7	100.6	0.3	0.9	1.4	2.5
3.3	Cleaning, Repair & Hire	0.61	104.4	104.9	103.6	103.0	101.1	(0.4)	0.8	1.4	3.3
3.4	Footwear	2.03	102.4	102.4	101.3	100.9	100.6	0.1	1.1	1.5	1.9
<b>4</b>	<b>Housing, Water, Electricity, Gas &amp; Other Fuels</b>	<b>17.45</b>	<b>107.2</b>	<b>106.9</b>	<b>106.6</b>	<b>101.7</b>	<b>101.1</b>	<b>0.3</b>	<b>0.6</b>	<b>5.5</b>	<b>6.1</b>
4.1	Rent Paid by Tenants	7.78	103.0	103.0	103.0	102.5	101.5	0.0	0.0	0.5	1.5
4.2	Materials for Maintenance & Repair of Dwellings	3.83	106.1	104.9	103.3	102.3	101.6	1.2	2.7	3.7	4.4
4.3	Water Supply & Miscellaneous Services	1.96	100.0	100.0	100.0	100.0	100.0	0.0	0.0	0.0	0.0
4.4	Electricity, Gas & Other Fuels	3.89	120.4	120.1	120.3	100.1	100.0	0.2	0.1	20.3	20.3
<b>5</b>	<b>Furnishing, H/H Equipment &amp; Routine Maintenance</b>	<b>4.85</b>	<b>104.0</b>	<b>103.7</b>	<b>103.7</b>	<b>103.3</b>	<b>101.8</b>	<b>0.3</b>	<b>0.3</b>	<b>0.6</b>	<b>2.2</b>
5.1	Furniture & Furnishing	1.35	104.1	103.9	103.4	102.9	101.5	0.2	0.7	1.2	2.6
5.2	Carpets & Other Floor Coverings	0.27	103.9	103.6	102.9	101.9	100.7	0.3	0.9	1.9	3.2
5.3	Household Textiles	0.29	104.8	104.1	102.9	102.6	101.0	0.7	1.9	2.2	3.8
5.4	Household Appliances	0.72	102.6	102.2	101.0	100.5	99.9	0.4	1.5	2.1	2.7
5.5	Glassware, Tableware & Household Utensils	0.23	103.8	103.7	103.6	103.4	101.8	0.1	0.2	0.5	2.0
5.6	Small Tools, Miscellaneous Accessories	0.04	105.0	104.4	103.2	102.9	102.3	0.6	1.8	2.0	2.7
5.7	Goods & Services for Household Maintenance	1.95	104.3	104.1	105.1	105.0	102.9	0.2	(0.9)	(0.7)	1.3
<b>6</b>	<b>Health</b>	<b>3.38</b>	<b>102.1</b>	<b>102.0</b>	<b>101.7</b>	<b>101.0</b>	<b>100.7</b>	<b>0.1</b>	<b>0.4</b>	<b>1.1</b>	<b>1.5</b>
6.1	Medical Products, Applications & Equipments	0.98	103.5	103.5	103.3	102.3	101.5	(0.0)	0.2	1.1	1.9
6.2	Out-Patient Services	0.93	102.7	102.2	101.6	101.2	100.8	0.4	1.1	1.5	1.9
6.3	Hospital Services	1.47	100.9	100.9	100.8	100.0	100.0	0.0	0.2	0.9	0.9

TABLE 3: NATIONAL CONSUMER PRICE GROUP AND SECTION INDICES (DECEMBER 2018=100.0) (Cont.)

Group Section	Weights	This month Aug 2020	Last month Jul 2020	3 months ago May 2020	6 months ago Feb 2020	12 months ago JAug 2019	Percentage Change on:			
							Last month	3 months ago	6 months ago	12 months ago
<b>7 Transport</b>	<b>23.43</b>	<b>94.0</b>	<b>93.9</b>	<b>100.7</b>	<b>101.4</b>	<b>101.0</b>	<b>0.1</b>	<b>(6.6)</b>	<b>(7.2)</b>	<b>(6.9)</b>
7.1 Purchase of Vehicles	5.74	103.9	103.6	103.5	104.4	103.3	0.3	0.4	(0.5)	0.5
7.2 Operation of Personal Transport	12.56	87.0	86.8	99.6	100.4	100.3	0.1	(12.7)	(13.4)	(13.3)
7.3 Transport Services	5.13	100.2	100.2	100.1	100.1	100.1	0.0	0.1	0.1	0.1
<b>8 Communication</b>	<b>6.94</b>	<b>100.8</b>	<b>100.6</b>	<b>100.4</b>	<b>100.3</b>	<b>100.2</b>	<b>0.2</b>	<b>0.4</b>	<b>0.4</b>	<b>0.5</b>
8.1 Postal Services	0.21	100.0	100.0	100.0	100.0	100.0	0.0	0.0	0.0	0.0
8.2 Telephone & Telefax Equipment *	1.13	104.7	103.6	102.3	102.0	101.4	1.0	2.3	2.7	3.3
8.3 Telephone & Telefax Services	5.60	100.0	100.0	100.0	100.0	100.0	0.0	0.0	0.0	0.0
<b>9 Recreation &amp; Culture</b>	<b>2.82</b>	<b>99.8</b>	<b>99.6</b>	<b>99.5</b>	<b>100.0</b>	<b>100.3</b>	<b>0.2</b>	<b>0.4</b>	<b>(0.1)</b>	<b>(0.4)</b>
9.1 Audio Visual, Photographic & Information Processing Equipment	2.10	99.5	99.4	99.2	99.4	100.0	0.1	0.3	0.0	(0.6)
9.2 Other Recreational Items & Equipments	0.30	102.9	101.4	101.6	101.9	101.0	1.4	1.3	1.0	1.9
9.3 Recreational & Cultural Services	0.31	97.4	97.3	97.4	99.9	99.8	0.1	0.0	(2.5)	(2.4)
9.4 Newspapers, Books & Stationary	0.11	105.9	105.9	105.7	105.1	104.7	0.0	0.2	0.8	1.2
<b>10 Education</b>	<b>4.60</b>	<b>108.0</b>	<b>108.0</b>	<b>108.0</b>	<b>108.0</b>	<b>103.1</b>	<b>0.0</b>	<b>0.0</b>	<b>0.0</b>	<b>4.7</b>
10.1 Pre-Primary & Primary Education	1.89	108.3	108.3	108.3	108.3	103.4	0.0	0.0	0.0	4.8
10.2 Secondary & Tertiary Education	2.70	107.8	107.7	107.7	107.7	103.0	0.0	0.0	0.0	4.6
<b>11 Restaurants &amp; Hotels</b>	<b>3.66</b>	<b>104.8</b>	<b>104.8</b>	<b>104.7</b>	<b>103.9</b>	<b>101.8</b>	<b>0.0</b>	<b>0.1</b>	<b>0.9</b>	<b>3.0</b>
11.1 Restaurants, Cafes & the Like	3.02	105.3	105.0	104.9	104.0	101.7	0.3	0.3	1.2	3.5
11.2 Accommodation Services	0.64	102.7	104.0	103.9	103.5	102.2	(1.2)	(1.1)	(0.8)	0.5
<b>12 Miscellaneous Goods &amp; Services</b>	<b>9.01</b>	<b>105.8</b>	<b>105.9</b>	<b>106.2</b>	<b>105.6</b>	<b>105.3</b>	<b>(0.1)</b>	<b>(0.3)</b>	<b>0.2</b>	<b>0.5</b>
12.1 Personal Care	2.33	101.7	102.1	103.7	101.3	101.1	(0.4)	(1.9)	0.4	0.6
12.2 Personal Effects Not Elsewhere Classified	0.22	101.0	101.1	100.8	100.6	100.1	(0.1)	0.3	0.5	0.9
12.3 Social Protection	0.13	108.2	108.2	108.2	108.2	101.6	0.0	0.0	0.0	6.6
12.4 Insurance	3.62	110.8	111.0	110.5	111.5	111.9	(0.1)	0.3	(0.6)	(0.9)
12.5 Financial Services	1.09	101.5	101.4	102.0	101.4	100.9	0.1	(0.5)	0.1	0.6
12.6 Taxes, Licences & Fees	1.61	103.8	103.7	103.4	102.0	100.4	0.1	0.4	1.8	3.4
<b>All-Items Index</b>	<b>100.0</b>	<b>102.8</b>	<b>102.6</b>	<b>103.7</b>	<b>102.7</b>	<b>101.7</b>	<b>0.2</b>	<b>(0.9)</b>	<b>0.0</b>	<b>1.0</b>

**TABLE 4: Average Annual Inflation ( December 2018=100)**

	Group	Weights	2009	2010	2011	2012	2013	2014	2015	2016	2017	2018	2019
1	Food & Non-Alcoholic Beverages	13.55	14.7	3.6	6.9	8.0	5.4	3.0	1.3	2.7	3.4	(0.5)	1.4
2	Alcoholic Beverages & Tobacco	4.34	35.2	7.1	8.4	7.6	10.3	9.0	6.1	2.5	4.5	1.1	2.8
3	Clothing & Footwear	5.95	8.4	8.0	8.9	7.5	6.3	6.0	7.6	6.5	3.2	1.8	1.3
4	Housing, Water, Electr. Gas & Other Fuels	17.45	4.8	6.4	8.4	7.7	4.3	3.9	7.1	6.3	5.4	4.1	2.1
5	Furnishing, H/H Equipment & Routine Maintenance	4.85	11.9	9.4	9.0	7.3	4.9	5.0	6.1	3.0	3.3	2.1	2.1
6	Health	3.38	5.5	2.7	4.5	5.9	5.5	8.3	6.3	3.0	2.4	1.1	1.0
7	Transport	23.43	(8.4)	12.1	13.2	10.8	7.3	1.2	(5.1)	(2.7)	1.6	7.5	6.2
8	Communication	6.94	(0.3)	1.2	(3.0)	(1.4)	0.3	0.3	0.3	0.2	0.5	(4.6)	(3.8)
9	Recreation & Culture	2.82	5.0	6.0	8.3	5.8	4.5	4.2	5.7	3.0	2.2	1.8	0.4
10	Education	4.60	3.9	5.8	10.6	6.4	4.7	7.4	6.4	3.7	4.1	5.5	3.1
11	Restaurants & Hotels	3.66	18.8	9.0	9.3	8.4	7.9	7.6	5.5	4.0	3.7	3.4	2.5
12	Miscellaneous Goods & Services	9.01	3.8	7.0	5.3	2.0	1.2	5.2	7.2	7.5	3.9	6.4	5.3
	<b>All-Items Index</b>	<b>100.0</b>	<b>8.2</b>	<b>6.9</b>	<b>8.5</b>	<b>7.5</b>	<b>5.9</b>	<b>4.4</b>	<b>3.1</b>	<b>2.8</b>	<b>3.3</b>	<b>3.2</b>	<b>2.8</b>

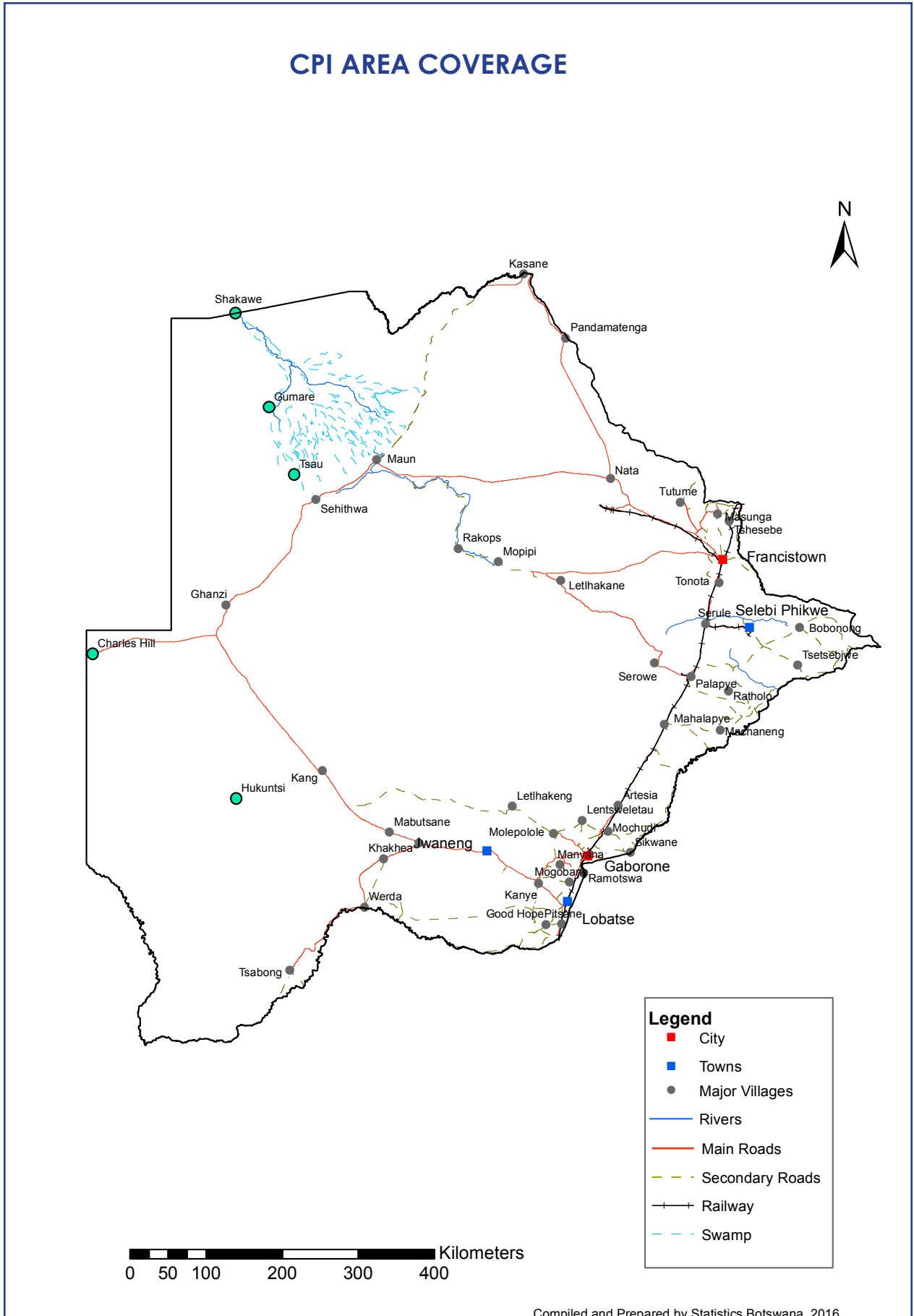
**TABLE 5: CONSUMER PRICE INDEX BY TRADEABILITY (DECEMBER 2018 = 100.0)**

	All Items		Non-Tradable		Domestic Tradable		Imported Tradable		All Tradable		
	Index	Inflation	Index	Inflation	Index	Inflation	Index	Inflation	Index	Inflation	
<b>Weights</b>	<b>100.00</b>		<b>42.29</b>		<b>15.46</b>		<b>42.26</b>		<b>57.71</b>		
<b>2017</b>	Jan	94.0	3.1	93.1	4.3	98.8	4.3	92.6	1.7	94.5	2.6
	Feb	94.2	3.4	93.2	4.3	99.3	4.3	92.9	2.4	94.8	3.1
	Mar	94.7	3.5	93.4	3.9	99.7	4.6	93.6	2.9	95.4	3.5
	Apr	95.4	3.4	94.9	3.8	100.0	4.3	93.8	2.7	95.7	3.3
	May	95.6	3.5	95.0	3.7	100.2	4.3	94.0	2.9	95.9	3.4
	Jun	95.8	3.5	95.4	3.6	100.1	4.2	94.2	2.9	96.0	3.4
	Jul	95.9	3.4	95.6	3.7	99.9	3.8	94.4	3.0	96.1	3.3
	Aug	96.0	3.4	95.6	3.7	99.8	3.4	94.6	3.1	96.2	3.2
	Sept	96.1	3.2	95.9	3.5	99.2	2.6	94.7	3.1	96.1	3.0
	Oct	96.1	3.0	96.0	3.4	99.1	2.2	94.8	3.0	96.1	2.8
	Nov	96.2	2.9	95.9	3.4	98.9	1.6	95.2	3.1	96.4	2.7
	Dec	96.6	3.2	96.3	3.7	98.9	1.3	95.8	3.7	96.8	3.0
<b>2018</b>	Jan	97.0	3.1	96.7	3.9	99.3	0.5	96.1	3.8	97.1	2.8
	Feb	97.2	3.2	96.9	4.0	99.6	0.3	96.4	3.8	97.4	2.8
	Mar	97.4	2.8	97.1	4.0	99.8	0.1	96.5	3.1	97.5	2.2
	Apr	98.7	3.4	100.4	5.8	99.9	-0.1	96.7	3.1	97.7	2.1
	May	98.7	3.3	100.5	5.7	100.0	-0.2	96.8	3.0	97.7	2.0
	Jun	98.8	3.1	99.7	4.4	99.9	-0.2	97.5	3.6	98.2	2.4
	Jul	98.8	3.1	99.8	4.4	99.9	-0.1	97.6	3.4	98.3	2.3
	Aug	98.8	3.0	99.8	4.4	99.8	0.0	97.6	3.2	98.3	2.2
	Sept	98.9	2.9	100.0	4.3	99.8	0.6	97.5	2.9	98.2	2.1
	Oct	99.5	3.6	99.9	4.1	99.7	0.7	99.1	4.5	99.3	3.3
	Nov	99.9	3.8	99.9	4.2	99.9	1.0	99.9	4.9	99.9	3.7
	Dec	100.0	3.5	100.0	3.9	100.0	1.1	100.0	4.4	100.0	3.4
<b>2019</b>	Jan	100.3	3.5	100.2	3.6	100.8	1.5	100.3	4.4	100.4	3.4
	Feb	100.5	3.3	100.2	3.5	100.9	1.4	100.5	4.2	100.6	3.3
	Mar	100.6	3.3	100.3	3.3	101.3	1.5	100.6	4.2	100.7	3.3
	Apr	101.2	2.5	101.3	0.9	101.8	1.9	100.8	4.3	101.1	3.5
	May	101.3	2.6	101.3	0.8	102.3	2.4	101.0	4.4	101.4	3.7
	Jun	101.5	2.8	101.6	2.0	102.5	2.6	101.0	3.6	101.4	3.2
	Jul	101.7	2.9	101.8	2.0	102.7	2.9	101.2	3.7	101.6	3.4
	Aug	101.7	2.9	101.8	2.0	103.0	3.2	101.3	3.7	101.7	3.5
	Sept	101.8	3.0	101.9	1.9	103.2	3.4	101.2	3.9	101.7	3.6
	Oct	101.9	2.4	101.9	2.0	103.3	3.5	101.3	2.3	101.8	2.6
	Nov	102.0	2.1	102.0	2.1	103.4	3.5	101.5	1.6	102.0	2.1
	Dec	102.2	2.2	102.2	2.2	103.7	3.7	101.6	1.6	102.1	2.1
<b>2020</b>	Jan	102.6	2.2	102.5	2.4	105.0	4.2	101.8	1.5	102.6	2.2
	Feb	102.7	2.2	102.6	2.3	105.4	4.4	102.0	1.4	102.8	2.2
	Mar	102.8	2.2	102.6	2.3	105.6	4.2	102.0	1.4	102.9	2.1
	Apr	103.7	2.5	104.6	3.3	106.0	4.1	102.1	1.2	103.1	2.0
	May	103.7	2.4	104.7	3.3	106.6	4.2	101.8	0.8	103.1	1.7
	Jun	102.4	0.9	104.7	3.0	107.7	5.1	98.3	-2.7	100.8	-0.6
	Jul	102.6	0.9	104.7	2.9	108.1	5.2	98.5	-2.7	101.0	-0.6
	Aug	102.8	1.0	104.7	2.9	108.5	5.4	98.7	-2.5	101.3	-0.4
<b>% Change on Last month</b>		<b>0.2</b>		<b>0.0</b>		<b>0.4</b>		<b>0.2</b>		<b>0.3</b>	

**TABLE 6: CORE INFLATION RATES BY EXCLUSION AND TRIMMED MEAN**

Year	Month	Consumer Price Index (Trimmed Mean) (September 2016 = 100)	Core Monthly Inflation Rate (Trimmed Mean) (percentage)	Consumer Price Index (Excluding Administered Prices) (September 2016 = 100)	Core Monthly Inflation (Excluding Administered Prices) (percentage)
<b>2017</b>					
	Jan	93.5	2.7	96.6	3.9
	Feb	93.7	2.9	96.9	3.9
	Mar	94.2	3.1	97.2	3.9
	Apr	94.4	3.1	97.5	3.3
	May	94.5	3.1	97.7	3.4
	Jun	94.8	2.9	97.9	3.3
	Jul	94.9	2.9	98.1	3.3
	Aug	95.0	2.9	98.2	3.3
	Sept	95.1	2.7	98.2	3.0
	Oct	95.2	2.6	98.2	2.8
	Nov	95.4	2.5	98.2	2.4
	Dec	95.8	2.9	98.2	2.3
<b>2018</b>					
	Jan	96.1	2.8	98.7	2.2
	Feb	96.4	2.9	99.0	2.2
	Mar	96.6	2.6	99.2	2.0
	Apr	97.6	3.1	99.4	1.9
	May	97.7	3.0	99.5	1.8
	Jun	98.6	3.2	99.6	1.8
	Jul	98.7	3.1	99.7	1.7
	Aug	98.7	3.0	99.7	1.6
	Sept	98.8	2.9	99.8	1.6
	Oct	99.5	3.7	99.8	1.6
	Nov	99.6	3.8	99.9	1.7
	Dec	100.0	3.6	100.0	1.8
<b>2019</b>					
	Jan	100.4	3.6	100.4	1.8
	Feb	100.5	3.5	100.6	1.6
	Mar	100.6	3.5	100.8	1.6
	Apr	101.3	2.6	101.0	1.7
	May	101.5	2.7	101.4	1.9
	Jun	101.2	2.5	101.6	2.0
	Jul	101.5	2.6	101.8	2.1
	Aug	101.5	2.7	101.9	2.2
	Sept	101.6	2.7	102.1	2.3
	Oct	101.6	2.1	102.1	2.3
	Nov	101.7	1.7	102.3	2.4
	Dec	101.8	1.8	102.5	2.5
<b>2020</b>					
	Jan	102.2	1.9	103.2	2.7
	Feb	102.4	1.9	103.4	2.7
	Mar	102.5	1.9	103.5	2.7
	Apr	102.7	1.8	103.8	2.6
	May	103.0	1.6	104.0	2.6
	Jun	102.7	1.0	104.4	2.8
	Jul	102.9	1.0	104.7	2.8
	Aug	103.1	1.1	104.9	2.9

### CPI AREA COVERAGE



Compiled and Prepared by Statistics Botswana, 2016

## GLOSSARY

**Consumer Price Index (CPI)** is an index which measures price changes in goods and services with reference to a base period.

**Inflation** is a measurement of prices movement of goods and services in a particular country.

**Domestic Tradeables** refers to the goods and services which a country (Botswana) can export to other countries.

**Imported Tradeables** represents the goods and services which a country (Botswana) imports from other countries (trading partners).

**Non-Tradeables** refers to the goods and services which a country cannot either export or import to other countries.

**All –Tradeables** refers to the total of **Domestic** and **Imported Tradeables**.

**Trimmed Mean Core Inflation**- attempts to remove 8 percent (by weight) of the commodity sub-groups with the largest price changes at each of the ends of an ordered series of price changes in any given month.

**Core inflation by Exclusion** is a measure used to remove the volatility inherent in prices that are only adjusted periodically and not always in response to currently prevailing market forces.

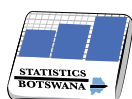


Private Bag 47  
Maun  
**Tel:** 371 5716  
**Fax:** 686 4327

Private Bag 32  
Ghanzi  
**Tel:** 371 5723  
**Fax:** 659 7506

Private Bag F193,  
City of Francistown  
**Tel:** 241 5848,  
**Fax:** 241 7540

Private Bag 0024, Gaborone  
**Tel:** 3671300  
**Fax:** 3952201  
**Toll Free:** 0800 600 200



**STATISTICS BOTSWANA**