

CONSUMER PRICE INDEX

April 2013

STATISTICS BOTSWANA

Copyrights © Statistics Botswana 2013

Contact Statistician:

Phaladi Labobedi

Tel: (267) 393 4968

Fax: (267) 3952 201

Statistics Botswana. Private Bag 0024 Botswana
Tel: (267) 367 1300. **Fax:** (267) 395 2201. **Email:** csobots.@gov.bw **Website:** www.cso.gov.bw

CONTENTS

COMMENTARY

Section 1: Headline Inflation

Section 2: Core Inflation

CHARTS

1. National Rates of Inflation, January 2010 – April 2013
2. Monthly Changes in the Cost-of-Living Index, January 2010 – April 2013
3. Non-Tradable Inflation Rates, January 2010 – April 2013
4. Tradable Inflation Rates, January 2010 - April 2013

TABLES

1. Cost-of-Living Index Series (January 2010 – April 2013)
2. National Cost-of-Living Group and Section Indices
3. Cost-of-Living Index by Tradability (January 2010 – April 2013)
4. Core Inflation Rates
5. Annual Average Inflation Rates 2008-2012

GLOSSARY

COMMENTARY

Section 1: Headline Inflation

The April 2013, national year-on-year inflation rate stood at 7.2 percent, a drop of 0.4 of a percentage point on the March 2013 rate of 7.6 percent. The rural villages' inflation rate shifted from 8.3 percent in March to 7.7 percent in April, declining by 0.6 of a percentage point. The urban villages' inflation rate recorded a drop of 0.3 of a percentage point, from 7.2 percent in March to 6.9 percent in April. The cities and towns' inflation rate moved from 7.5 percent in March to 7.3 percent in April, registering a decrease of 0.2 of a percentage point.

The April national Consumer Price Index was at 168.2, an increase of 0.6 percent on the March index of 167.1. The cities and towns' index went up from 166.0 to 167.3, recording an increase of 0.8 percent. The urban villages' index rose by 0.7 percent, from 166.2 to 167.4 between the two months, while the rural villages' index moved from 171.8 to 172.1 between March and April, recording an increase of 0.2 percent.

Four group indices recorded changes of at least 1.0 percent between March and April as follows;

The Recreation & Culture group index rose by 2.1 percent, from 133.0 to 135.9 between March and April. This was due to increases in the constituent section indices of *Recreational & Cultural Services (4.5 percent)*, and *Newspapers, Books & Stationery (3.3 percent)*.

The Alcoholic Beverages, Tobacco & Narcotics group index moved from 222.1 to 226.1, recording an increase of 1.8 percent between two months. This was due to increases in the constituent section indices of *Alcoholic Beverages (1.8 percent)* and *Tobacco (1.2 percent)*.

The *Housing Water & Electricity* group index recorded an increase of 1.7 percent, from 149.5 in March to 152.2 in April. This was due to an increase in the constituent section index of *Electricity Gas and Other Fuels*, which rose by 7.2 percent. The rise in the *Electricity, Gas & Other Fuels* section index was largely due to the hike in the electricity tariffs for domestic consumers who consumed up to 200 kWh and more by 7.0 and 10.0 percent respectively, which effected on 1st April 2013.

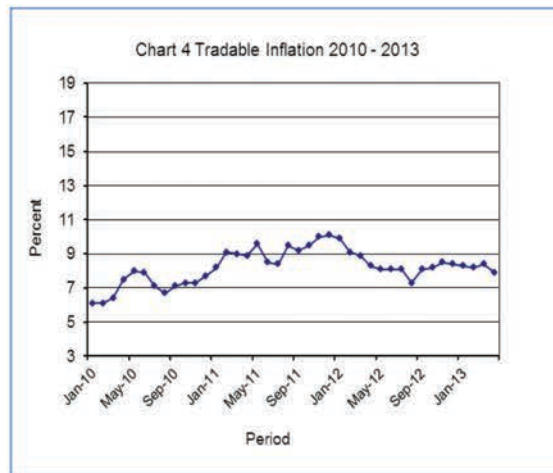
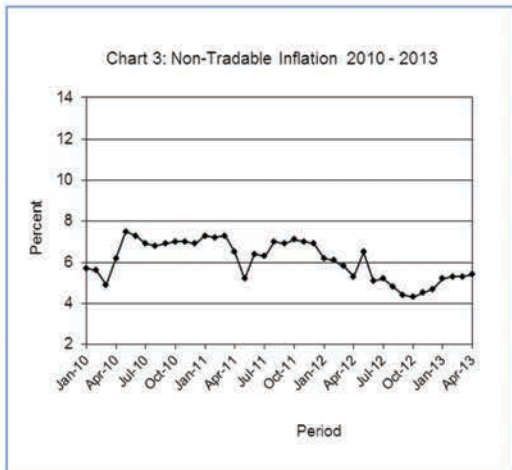
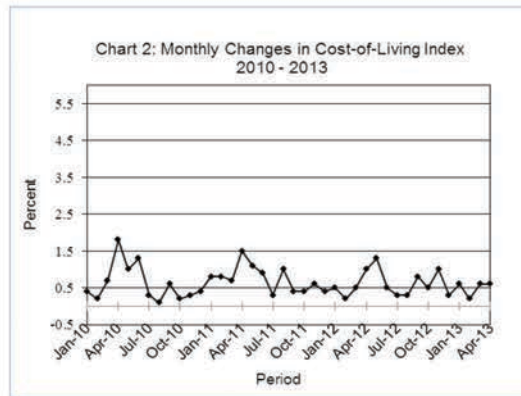
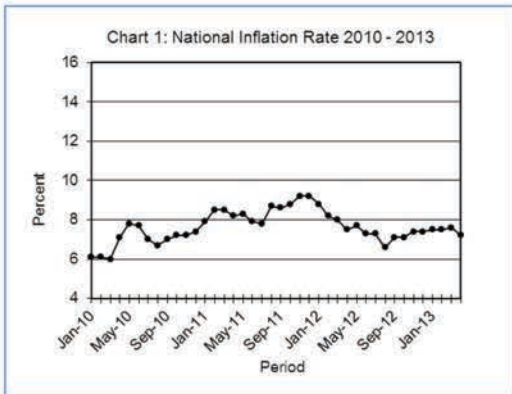
The *Restaurants & Hotels* group index registered an increase of 1.3 percent from 205.6 in March to 208.2 in April. The increase was a result of the constituent section index of *Restaurants, Café's and the Like*, which increased by 1.3 percent.

All-Tradable inflation rate registered a decline of 0.5 of a percentage point, from 8.4 percent in March to 7.9 percent in April. The *Domestic Tradable* inflation diminished by 1.0 percentage point in April, registering 8.4 percent against the March figure of 9.4 percent, while the *Imported Tradable* inflation rate went down by 0.2 of a percentage point, from 7.7 percent in March to 7.5 percent in April. The *Non-Tradable* inflation rate edged up by 0.1 of a percentage point, from 5.3 percent in March to 5.4 percent in April.

The All-Tradable index moved from 175.0 in March to 176.0 in April, recording an increase of 0.6 percent. The *Domestic Tradable* index went up by 1.3 percent, from 188.4 in March to 190.9 in April. The *Non-Tradable* index rose by 0.8 percent, from 148.8 in March to 150.1 in April, whereas the *Imported Tradable* index recorded a rise of 0.2 percent, from 168.1 to 168.4 between the two months.

Section 2: Core Inflation

The Trimmed Mean Core Inflation rate stood at 6.8 percent in April, a decline of 0.5 of a percentage point on the March rate of 7.3 percent. The Core Inflation rate by exclusion went down by 0.6 of a percentage point from 7.0 percent to 6.4 percent between March and April.



A.N. Majelantle
 Statistician General
 15th May 2013

TABLE 1: Cost of Living Index (September 2006 =100.0)

		Food	Alcohol and Tobacco	Clothing and Footwear	Housing	Furniture etc	Health	Transport	Communication	Rec. & Culture	Education	Rest. & Hotels	Miscellaneous
Weights (1)	(2)	21.84 (3)	9.29 (4)	7.52 (5)	11.46 (6)	6.76 (7)	2.71 (8)	18.98 (9)	3.01 (10)	2.22 (11)	3.37 (12)	3.27 (13)	9.57 (14)
2010	Jan	151.1	165.8	116.9	119.9	130.6	124.9	120.6	94.6	109.9	120.4	155.6	114.4
	Feb	151.1	166.0	117.3	120.0	131.2	125.2	121.0	94.6	110.3	120.4	156.5	114.6
	Mar	152.4	167.6	118.9	121.2	133.1	125.4	121.2	94.6	110.8	120.4	158.3	115.0
	Apr	154.4	174.1	119.9	121.8	134.3	127.3	123.4	95.4	111.1	120.4	162.7	119.5
	May	156.0	176.7	120.5	126.3	135.0	127.6	123.6	95.4	111.4	120.5	164.4	119.7
	Jun	156.1	177.4	121.4	126.8	137.1	127.8	130.2	96.4	111.5	120.5	165.9	120.8
	July	156.4	177.4	122.9	127.3	138.0	128.1	130.3	96.4	115.6	120.5	166.6	121.0
	Aug	156.8	177.6	123.6	127.5	138.5	128.2	129.6	96.4	115.8	120.5	167.5	121.1
	Sept	156.7	179.1	125.0	127.7	139.3	128.3	131.6	96.4	116.1	120.5	168.8	121.4
	Oct	156.7	179.7	126.3	127.9	139.6	128.4	131.7	96.4	116.5	120.5	170.6	121.5
	Nov	157.2	180.4	127.4	128.1	140.4	128.4	131.8	96.4	116.7	120.5	171.8	121.5
	Dec	157.6	182.1	127.1	128.8	141.7	128.6	132.2	96.4	116.9	120.5	171.9	121.7
2011	Jan	158.2	183.4	127.5	129.1	142.3	128.7	133.7	96.4	117.1	133.2	172.7	122.6
	Feb	159.1	183.9	127.9	129.4	142.9	128.8	137.5	96.4	117.6	133.2	172.9	122.6
	Mar	160.5	186.0	128.5	130.9	144.6	129.1	137.7	96.4	118.5	133.2	173.7	122.8
	Apr	164.4	188.5	131.0	131.1	145.3	133.0	139.0	96.4	123.4	133.2	175.5	125.7
	May	165.8	191.3	132.1	131.8	146.7	133.3	142.8	91.2	124.1	133.2	179.3	126.1
	Jun	166.6	191.9	133.1	137.6	148.9	133.6	143.3	91.2	124.4	133.2	182.5	126.6
	Jul	167.0	192.2	134.4	138.2	149.5	133.6	143.4	91.2	124.5	133.2	183.4	126.7
	Aug	167.9	192.4	135.1	138.9	150.4	133.7	148.7	91.2	124.7	133.2	183.7	126.8
	Sept	168.8	192.4	135.8	140.0	152.9	133.9	148.8	91.2	124.8	133.2	184.5	126.9
	Oct	169.8	192.8	136.4	140.6	153.9	136.0	149.4	91.2	125.3	133.2	184.6	127.1
	Nov	170.7	192.9	137.2	141.2	154.3	136.1	152.6	91.2	125.3	133.2	185.3	127.2
	Dec	171.8	192.8	138.8	141.8	155.2	136.4	152.6	91.2	125.4	133.2	186.0	127.2
2012	Jan	172.3	193.5	139.6	141.9	155.6	136.5	153.4	91.2	125.6	141.5	187.1	127.7
	Feb	173.3	193.6	140.2	142.0	155.9	136.9	153.5	91.2	125.7	141.5	187.5	127.7
	Mar	174.6	196.0	140.7	142.4	156.6	137.2	153.5	91.2	125.9	141.7	189.5	127.7
	Apr	177.0	201.2	140.9	142.4	157.5	141.0	153.8	91.7	130.2	141.7	192.7	128.2
	May	178.4	204.7	141.3	147.4	158.1	141.3	157.8	91.7	130.3	141.7	193.7	128.3
	Jun	179.6	205.2	141.9	148.6	160.1	141.5	158.2	91.7	130.4	141.7	194.9	128.4
	Jul	180.4	205.8	142.5	148.4	160.6	142.1	159.3	91.7	130.9	141.7	195.3	128.6
	Aug	181.0	206.1	144.0	148.4	161.2	142.3	159.9	91.7	131.8	141.7	196.1	128.2
	Sept	181.7	206.9	145.5	148.5	161.9	142.6	164.2	91.7	132.1	141.7	199.3	128.2
	Oct	182.8	210.7	146.0	148.4	162.4	142.7	164.4	91.7	132.3	141.7	201.0	128.3
	Nov	183.4	215.5	146.8	148.5	163.0	142.7	168.2	91.7	132.5	141.7	203.8	128.5
	Dec	184.2	216.3	147.5	148.7	163.5	143.1	169.2	91.7	132.6	141.7	204.1	128.6
2013	Jan	185.2	216.9	148.0	148.8	164.0	146.8	170.0	91.7	132.6	148.4	204.6	129.2
	Feb	186.0	217.2	148.6	148.9	164.5	147.2	170.1	91.7	132.8	148.4	204.9	129.2
	Mar	187.1	222.1	149.1	149.5	165.2	147.4	170.4	91.7	133.0	148.4	205.6	129.3
	Apr	187.7	226.1	150.4	152.2	165.8	147.6	170.5	91.7	135.9	148.4	208.2	129.0
% Change on Last month		0.3	1.8	0.9	1.7	0.3	0.2	0.1	0.0	2.1	0.0	1.3	(0.2)

TABLE 1: Cost of Living Index (Cont.)

	All Items Index	National Inflation Rate %	Monthly Change %	Towns & Cities Index 47.33	Urban Village Index 33.76	Rural Villages Index 18.91	Towns & Cities %	Annual Inflation Urban Villages %	Rural %
2010 Jan	131.4	6.1	0.4	129.8	131.2	135.8	6.7	5.9	5.1
Feb	131.7	6.1	0.2	130.1	131.2	136.4	6.6	5.8	5.4
Mar	132.6	6.0	0.7	131.0	131.8	138.3	6.5	5.2	5.9
Apr	135.0	7.1	1.8	133.5	134.0	140.4	7.9	6.3	6.6
May	136.3	7.8	1.0	134.8	135.4	141.6	8.7	7.2	6.9
Jun	138.1	7.7	1.3	137.0	137.0	142.8	8.5	7.0	7.0
July	138.6	7.0	0.3	137.4	137.6	143.2	7.9	6.4	6.2
Aug	138.7	6.7	0.1	137.8	137.6	142.7	7.7	5.9	5.6
Sept	139.4	7.0	0.6	138.6	138.7	143.0	8.0	6.4	5.6
Oct	139.7	7.2	0.2	138.8	139.1	143.0	8.0	6.8	5.9
Nov	140.1	7.2	0.3	139.5	139.3	143.2	8.2	6.7	5.4
Dec	140.6	7.4	0.4	139.8	139.9	144.0	8.1	7.2	6.2
2011 Jan	141.8	7.9	0.8	141.3	141.0	144.5	8.8	7.5	6.4
Feb	142.9	8.5	0.8	142.4	142.2	145.5	9.5	8.4	6.6
Mar	143.8	8.5	0.7	143.2	143.2	146.6	9.3	8.7	6.0
Apr	146.0	8.2	1.5	145.3	145.5	148.8	8.9	8.5	6.0
May	147.6	8.3	1.1	146.9	146.9	150.5	9.0	8.5	6.2
Jun	149.0	7.9	0.9	148.4	148.1	152.0	8.3	8.1	6.4
Jul	149.3	7.8	0.3	148.9	148.3	152.3	8.4	7.7	6.3
Aug	150.8	8.7	1.0	150.4	149.8	153.4	9.1	8.9	7.5
Sept	151.4	8.6	0.4	150.9	150.6	153.9	8.9	8.6	7.6
Oct	152.0	8.8	0.4	151.4	151.5	154.6	9.0	8.9	8.1
Nov	153.0	9.2	0.6	152.4	152.7	155.0	9.3	9.6	8.2
Dec	153.5	9.2	0.4	152.9	153.1	155.9	9.4	9.4	8.3
2012 Jan	154.3	8.8	0.5	153.5	154.0	157.0	8.6	9.2	8.6
Feb	154.7	8.2	0.2	153.7	154.4	157.6	8.0	8.6	8.3
Mar	155.4	8.0	0.5	154.3	155.1	158.6	7.8	8.3	8.2
Apr	156.9	7.5	1.0	156.0	156.6	159.8	7.3	7.7	7.4
May	159.0	7.7	1.3	158.6	158.2	161.3	8.0	7.7	7.2
Jun	159.8	7.3	0.5	159.3	158.9	162.5	7.4	7.3	6.9
Jul	160.3	7.3	0.3	159.7	159.5	163.2	7.3	7.6	7.1
Aug	160.8	6.6	0.3	160.0	160.2	163.6	6.4	6.9	6.6
Sept	162.1	7.1	0.8	161.9	161.2	164.2	7.2	7.0	6.7
Oct	162.8	7.1	0.5	162.6	161.7	165.3	7.5	6.8	6.9
Nov	164.4	7.4	1.0	164.2	163.1	167.2	7.7	6.8	7.9
Dec	164.9	7.4	0.3	164.3	163.9	168.4	7.5	7.1	8.0
2013 Jan	165.9	7.5	0.6	165.0	164.8	170.0	7.5	7.0	8.3
Feb	166.2	7.5	0.2	165.2	165.0	170.7	7.5	6.9	8.3
Mar	167.1	7.6	0.6	166.0	166.2	171.8	7.5	7.2	8.3
Apr	168.2	7.2	0.6	167.3	167.4	172.1	7.3	6.9	7.7
% Change on last month	0.6			0.8	0.7	0.2			

Table 2: National Cost-of-Living Group & Section Indices (September 2006 = 100.0)

Group Section	Weights	This	Last	3 months	6 months	12 months	Percentage Change on:			
		month Apr 2013	month Mar 2013	ago Jan 2013	ago Oct 2012	ago Apr 2012	Last month	3 months ago	6 months ago	12 months ago
1 Food & Non-Alcoholic Beverages	21.84	187.7	187.1	185.2	182.8	177.0	0.3	1.3	2.7	6.1
1.1 Bread & Cereals	6.51	184.6	184.2	183.0	181.5	174.9	0.2	0.9	1.7	5.6
1.2 Meat (Fresh, Chilled & Frozen)	3.15	191.7	191.5	190.5	186.4	183.0	0.1	0.6	2.8	4.7
1.3 Fish (Fresh, Chilled & Frozen)	0.20	187.9	187.0	185.5	183.6	175.0	0.5	1.3	2.4	7.4
1.4 Milk, Cheese & Milk Products	2.19	187.9	187.6	185.1	183.4	180.2	0.2	1.5	2.5	4.3
1.5 Oils & Fats	0.90	228.2	226.9	223.8	218.9	213.5	0.6	2.0	4.2	6.9
1.6 Fruit	0.67	134.2	133.7	132.8	129.8	125.0	0.3	1.0	3.4	7.3
1.7 Vegetables	1.94	190.9	189.4	186.7	183.7	174.2	0.8	2.3	3.9	9.6
1.8 Sugar, Jam, Honey, Chocolate & Confectionery	1.36	193.1	192.5	189.2	186.5	180.8	0.3	2.1	3.6	6.8
1.9 Food not else where Classified	2.36	187.8	187.6	186.5	183.4	177.0	0.1	0.7	2.4	6.1
1.10 Coffee, Tea & Cocoa	0.63	205.3	204.9	202.3	202.2	195.3	0.2	1.5	1.6	5.1
1.11 Mineral Waters, Soft Drinks, Fruits & Veg. Juices	1.94	178.3	176.7	173.4	171.6	166.2	0.9	2.9	3.9	7.3
2 Alcoholic Beverages, Tobacco & Narcotics	9.29	226.1	222.1	216.9	210.7	201.2	1.8	4.2	7.3	12.4
2.1 Alcoholic Beverages	8.09	227.2	223.1	217.6	210.7	200.9	1.8	4.4	7.8	13.1
2.2 Tobacco	1.20	218.4	215.9	212.3	210.2	203.2	1.2	2.9	3.9	7.5
3 Clothing and Footwear	7.52	150.4	149.1	148.0	146.0	140.9	0.9	1.6	3.0	6.7
3.1 Clothing	3.33	171.1	168.8	167.4	165.1	160.5	1.4	2.3	3.6	6.6
3.2 Other articles of Clothing	1.82	135.9	135.8	134.5	132.5	126.5	0.1	1.0	2.6	7.5
3.3 Cleaning, Repair & Hire	0.03	184.1	183.7	183.0	180.6	170.9	0.2	0.6	1.9	7.7
3.4 Footwear	2.34	131.7	131.0	130.6	128.9	123.9	0.5	0.8	2.1	6.3
4 Housing, Water, Electr. Gas & Other Fuels	11.46	152.2	149.5	148.8	148.4	142.4	1.7	2.3	2.5	6.8
4.1 Rent paid by Tenants	5.68	132.4	132.4	131.3	131.1	128.4	0.0	0.8	1.0	3.1
4.2 Materials for Maintenance & Repair of dwellings	2.57	146.3	146.2	144.9	143.9	141.9	0.0	0.9	1.6	3.1
4.3 Water Supply & Misc. Services	1.14	151.4	151.4	151.4	151.4	102.2	0.0	0.0	0.0	48.2
4.4 Electricity Gas and other Fuels	2.06	214.2	199.8	200.2	200.0	203.8	7.2	7.0	7.1	5.1
5 Furnishing, H/H Equipment & Routine Maintenance	6.76	165.8	165.2	164.0	162.4	157.5	0.3	1.1	2.1	5.2
5.1 Furniture & Furnishing	2.31	139.7	139.1	138.6	137.0	133.0	0.4	0.8	2.0	5.0
5.2 Carpets & Other Floor Coverings	0.04	151.4	151.1	150.4	149.3	146.2	0.2	0.7	1.4	3.5
5.3 Household Textiles	0.44	153.3	153.1	151.8	150.8	147.0	0.1	1.0	1.7	4.3
5.4 Household Appliances	0.69	140.3	140.0	139.5	138.4	133.3	0.2	0.6	1.4	5.3
5.5 Glassware, Tableware & Household Utensils	0.44	176.6	175.4	174.0	172.1	162.7	0.7	1.5	2.6	8.6
5.6 Small Tools, Miscellaneous Accessories	0.06	171.7	170.9	169.2	168.1	166.6	0.5	1.5	2.2	3.1
5.7 Goods & Services for H/hold Maintenance	2.79	193.9	193.4	191.4	189.8	184.6	0.3	1.3	2.2	5.0

Table 2: National Cost-of-Living Group & Section Indices (September 2006 = 100.0) (Cont.)

Group Section	Weights	This month	Last month	3 months ago	6 months ago	12 months ago	Percentage Change on:			
		Apr 2013	Mar 2013	Jan 2013	Oct 2012	Apr 2012	Last month	3 months ago	6 months ago	12 months ago
6 Health	2.71	147.6	147.4	146.8	142.7	141.0	0.2	0.5	3.5	4.7
6.1 Medical Products, App. & Equip.	0.35	177.2	175.3	171.4	168.0	159.7	1.1	3.4	5.4	10.9
6.2 Out-patient Services	0.66	149.8	149.8	149.6	148.3	145.9	0.0	0.1	1.0	2.7
6.3 Hospital Services	1.71	140.7	140.7	140.7	135.3	135.3	0.0	0.0	4.0	4.0
7 Transport	18.98	170.5	170.4	170.0	164.4	153.8	0.1	0.3	3.7	10.9
7.1 Purchase of Vehicles	5.89	151.2	151.4	151.1	151.2	148.9	(0.1)	0.1	0.0	1.5
7.2 Operation of Personal Transport	10.92	179.7	179.4	178.9	172.1	155.0	0.2	0.5	4.5	16.0
7.3 Transport Services	2.17	176.5	176.5	176.5	161.1	160.9	0.0	0.0	9.5	9.7
8 Communication	3.01	91.7	91.7	91.7	91.7	91.7	0.0	0.0	0.0	0.0
8.1 Postal Services	0.04	209.9	209.9	209.9	209.9	209.9	0.0	0.0	0.0	0.0
8.2 Telephone & Telefax Equipment	0.74	66.6	66.6	66.6	66.6	66.6	0.0	0.0	0.0	0.0
8.3 Telephone & Telefax Services	2.23	98.0	98.0	98.0	98.0	97.9	0.0	0.0	0.0	0.1
9 Recreation & Culture	2.22	135.9	133.0	132.6	132.3	130.2	2.1	2.5	2.7	4.4
9.1 Audio Visual, Photographic & Info. Proce. Equip.	1.09	105.8	106.0	105.5	105.3	103.4	(0.1)	0.4	0.5	2.4
9.2 Other Recreational Items & Equip.	0.18	160.1	160.0	158.8	157.8	150.2	0.1	0.9	1.4	6.6
9.3 Recreational & Cultural Services	0.76	156.0	149.3	149.2	149.0	148.4	4.5	4.6	4.7	5.2
9.4 Newspapers, Books & Stationary	0.19	202.2	195.7	194.6	193.9	189.9	3.3	3.9	4.3	6.5
10 Education	3.37	148.4	148.4	148.4	141.7	141.7	0.0	0.0	4.7	4.7
10.1 Pre-Primary & Primary Education	1.10	185.1	185.1	185.1	173.5	173.4	0.0	0.0	6.7	6.8
10.2 Secondary & Tertiary Education	2.26	130.5	130.5	130.5	126.2	126.2	0.0	0.0	3.4	3.4
11 Restaurants & Hotels	3.27	208.2	205.6	204.6	201.0	192.7	1.3	1.8	3.6	8.1
11.1 Restaurants, Cafes and the Like	3.08	211.1	208.4	207.3	203.6	195.2	1.3	1.8	3.7	8.2
11.2 Accommodation Services	0.19	160.7	160.1	160.0	157.4	151.5	0.3	0.4	2.1	6.0
12 Miscellaneous Goods & Services	9.57	129.0	129.3	129.2	128.3	128.2	(0.2)	(0.1)	0.6	0.6
12.1 Personal Care	0.66	155.2	154.6	153.9	153.3	149.1	0.4	0.9	1.2	4.1
12.2 Personal Effects N.E.C.	0.04	133.5	133.1	132.2	131.6	127.1	0.3	1.0	1.4	5.0
12.3 Social Protection	0.14	160.5	160.5	160.5	147.8	147.8	0.0	0.0	8.6	8.6
12.4 Insurance	6.32	128.1	128.7	128.7	128.9	129.6	(0.4)	(0.4)	(0.6)	(1.1)
12.5 Financial Services	0.18	147.8	147.0	146.0	143.8	138.6	0.6	1.3	2.8	6.7
12.6 Taxes Licences, Fees	2.24	120.1	120.0	119.9	116.6	116.2	0.1	0.2	3.0	3.4
All-Items Index	100.0	168.2	167.1	165.9	162.8	156.9	0.6	1.4	3.3	7.2

TABLE 3: Cost of Living Index by Tradability (September 2006 = 100.0)

Weights	All Items		Non-Tradable		Domestic Tradable		Imported Tradable		All Tradable		
	Index	Inflation	Index	Inflation	Index	Inflation	Index	Inflation	Index	Inflation	
	100.00		30.92		23.91		45.17		69.08		
2010	Jan	131.4	6.1	123.8	5.7	149.3	3.0	127.2	8.5	134.6	6.1
	Feb	131.7	6.1	124.0	5.6	149.5	2.2	127.4	9.0	134.9	6.1
	Mar	132.6	6.0	124.6	4.9	150.5	2.0	128.7	9.3	136.0	6.4
	Apr	135.0	7.1	126.9	6.2	153.7	3.5	130.6	10.1	138.3	7.5
	May	136.3	7.8	128.7	7.5	154.9	4.2	131.7	10.4	139.5	8.0
	Jun	138.1	7.7	129.7	7.3	154.8	4.2	135.1	10.3	141.6	7.9
	July	138.6	7.0	129.9	6.9	155.3	3.8	135.7	9.2	142.2	7.1
	Aug	138.7	6.7	130.0	6.8	155.3	3.8	135.9	8.5	142.4	6.7
	Sept	139.4	7.0	130.9	6.9	155.5	4.3	136.8	8.8	143.1	7.1
	Oct	139.7	7.2	131.0	7.0	155.6	4.3	137.3	9.1	143.4	7.3
	Nov	140.1	7.2	131.2	7.0	155.9	4.3	137.9	9.0	144.0	7.3
	Dec	140.6	7.4	131.6	6.9	156.5	5.0	138.4	9.3	144.5	7.7
2011	Jan	141.8	7.9	132.8	7.3	158.2	5.9	139.2	9.5	145.6	8.2
	Feb	142.9	8.5	132.9	7.2	158.9	6.2	141.3	10.9	147.2	9.1
	Mar	143.8	8.5	133.7	7.3	160.1	6.4	142.2	10.5	148.2	9.0
	Apr	146.0	8.2	135.2	6.5	162.2	5.5	144.8	10.9	150.6	8.9
	May	147.6	8.3	135.3	5.2	163.5	5.5	147.6	12.1	152.9	9.6
	Jun	149.0	7.9	138.0	6.4	164.8	6.5	148.1	9.6	153.6	8.5
	Jul	149.3	7.8	138.0	6.3	165.4	6.5	148.6	9.5	154.2	8.4
	Aug	150.8	8.7	139.0	7.0	165.7	6.7	150.9	11.1	155.8	9.5
	Sept	151.4	8.6	139.9	6.9	166.3	6.9	151.3	10.6	156.3	9.2
	Oct	152.0	8.8	140.3	7.1	167.0	7.4	152.1	10.8	157.0	9.5
	Nov	153.0	9.2	140.4	7.0	167.5	7.4	153.9	11.6	158.4	10.0
	Dec	153.5	9.2	140.7	6.9	168.0	7.4	154.6	11.8	159.1	10.1
2012	Jan	154.3	8.8	141.1	6.2	169.6	7.2	155.3	11.5	160.0	9.9
	Feb	154.7	8.2	141.0	6.1	170.4	7.3	155.7	10.2	160.6	9.1
	Mar	155.4	8.0	141.4	5.8	172.2	7.6	156.1	9.8	161.4	8.9
	Apr	156.9	7.5	142.4	5.3	176.0	8.5	156.7	8.2	163.2	8.3
	May	159.0	7.7	144.2	6.5	178.0	8.9	158.9	7.7	165.3	8.1
	Jun	159.8	7.3	145.0	5.1	178.7	8.4	159.7	7.8	166.0	8.1
	Jul	160.3	7.3	145.2	5.2	179.0	8.2	160.5	8.0	166.7	8.1
	Aug	160.8	6.6	145.7	4.8	179.3	8.2	161.1	6.7	167.2	7.3
	Sept	162.1	7.1	146.1	4.4	179.9	8.2	163.4	8.0	168.9	8.1
	Oct	162.8	7.1	146.3	4.3	181.6	8.7	164.0	7.8	169.9	8.2
	Nov	164.4	7.4	146.7	4.5	183.7	9.7	165.9	7.8	172.0	8.5
	Dec	164.9	7.4	147.3	4.7	184.5	9.8	166.3	7.5	172.5	8.4
2013	Jan	165.9	7.5	148.4	5.2	185.6	9.5	167.1	7.6	173.4	8.3
	Feb	166.2	7.5	148.5	5.3	186.0	9.2	167.5	7.6	173.8	8.2
	Mar	167.1	7.6	148.8	5.3	188.4	9.4	168.1	7.7	175.0	8.4
	Apr	168.2	7.2	150.1	5.4	190.9	8.4	168.4	7.5	176.0	7.9
% Change on last month		0.6		0.8		1.3		0.2		0.6	

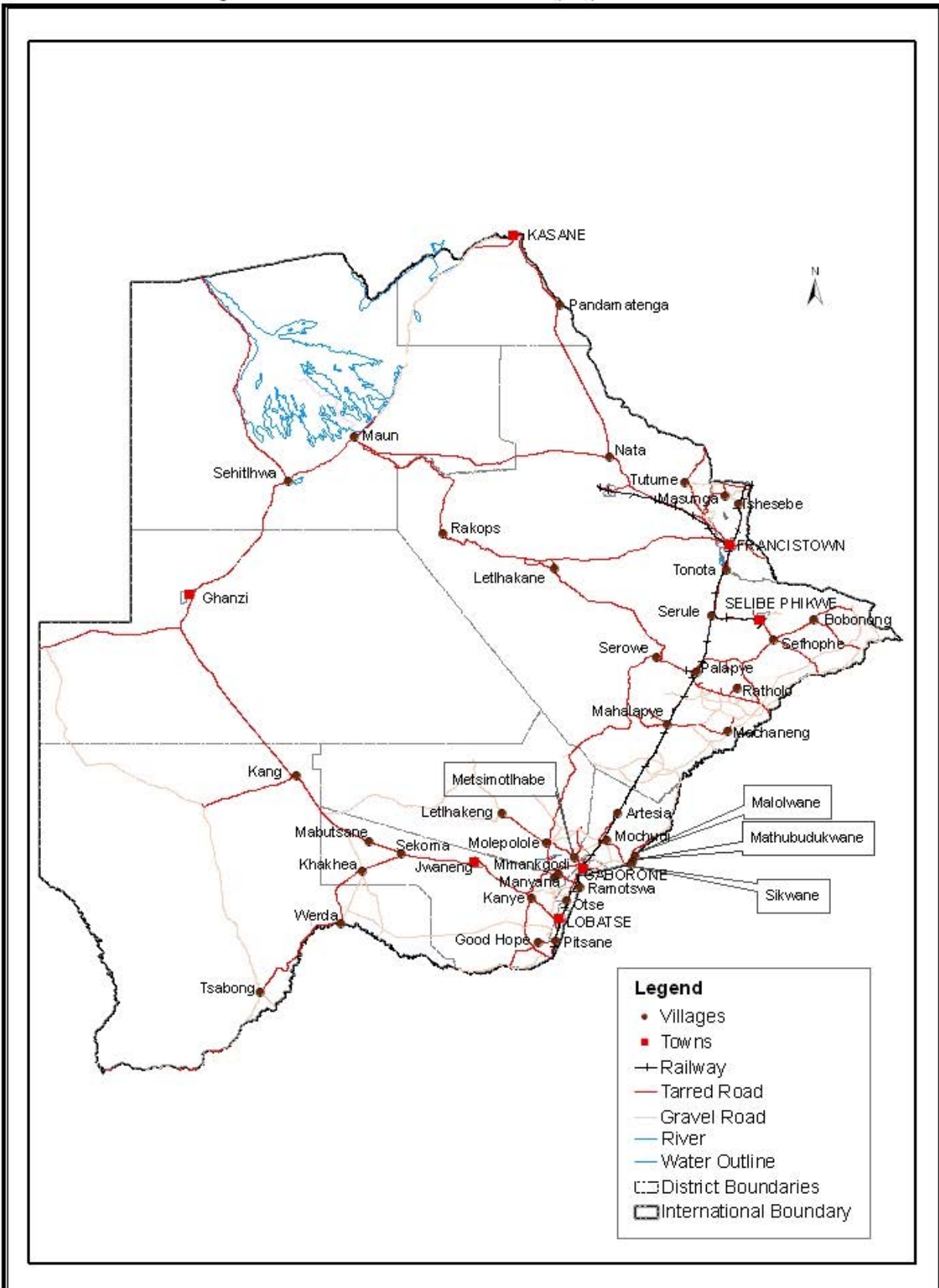
TABLE 4: Core Inflation Rates by Exclusion and Trimmed Mean

Year	Month	Consumer Price Index (Trimmed Mean) (September 2006 = 100)	Core Monthly Inflation Rate (Trimmed Mean) (percentage)	Consumer Price Index (Excluding Administered Prices) (September 2006 = 100)	Core Monthly Inflation (Excluding Administered Prices) (percentage)
2010					
	Jan	129.7	6.7	135.2	5.9
	Feb	129.0	6.7	135.5	5.8
	Mar	130.0	6.5	136.7	5.6
	Apr	133.1	7.7	139.1	6.8
	May	133.2	8.3	140.2	7.2
	Jun	135.0	8.1	141.0	6.9
	July	136.6	7.6	141.5	6.1
	Aug	135.4	7.2	142.0	6.3
	Sept	136.8	7.4	142.7	6.5
	Oct	137.2	7.6	143.1	6.8
	Nov	137.9	7.6	143.6	6.7
	Dec	137.5	7.7	144.2	7.1
2011					
	Jan	139.6	8.0	145.5	7.6
	Feb	142.1	8.6	146.0	7.7
	Mar	142.6	8.4	147.1	7.6
	Apr	143.4	8.0	149.4	7.4
	May	148.7	8.2	150.5	7.3
	Jun	148.8	7.6	151.4	7.4
	July	150.3	7.4	151.9	7.3
	Aug	153.7	8.4	152.5	7.4
	Sept	154.8	8.1	153.2	7.4
	Oct	155.6	8.3	154.0	7.6
	Nov	156.3	8.5	154.4	7.5
	Dec	156.9	8.5	155.1	7.5
2012					
	Jan	157.9	8.1	156.0	7.2
	Feb	158.0	7.8	156.5	7.2
	Mar	159.2	7.6	157.4	7.0
	Apr	158.9	7.3	159.2	6.6
	May	160.7	7.3	160.2	6.5
	Jun	163.9	6.8	161.2	6.4
	Jul	164.5	6.8	161.8	6.5
	Aug	164.0	6.3	162.5	6.6
	Sept	165.6	6.5	163.2	6.5
	Oct	163.7	6.7	164.1	6.6
	Nov	165.0	7.1	165.1	6.9
	Dec	165.7	7.1	165.7	6.8
2013					
	Jan	166.8	7.2	166.8	6.9
	Feb	167.2	7.2	167.2	6.9
	Mar	168.3	7.3	168.4	7.0
	Apr	172.2	6.8	169.4	6.4

TABLE 5: Average Annual Inflation (September 2006 = 100.0)

Group	Weights	YEAR				
		2008	2009	2010	2011	2012
1 Food & Non-Alcoholic Beverages	21.84	20.2	14.7	3.6	6.9	8.0
2 Alcoholic Beverages, Tobacco & Narcotics	9.29	13.2	35.2	7.1	8.4	7.6
3 Clothing and Footwear	7.52	2.0	8.4	8.0	8.9	7.5
4 Housing, Water, Electr. Gas & Other Fuels	11.46	8.1	4.8	6.4	8.4	7.7
5 Furnishing, H/H Equipment & Routine Maintenance	6.76	6.0	11.9	9.4	9.0	7.3
6 Health	2.71	11.3	5.5	2.7	4.5	5.9
7 Transport	18.98	21.2	(8.4)	12.1	13.2	10.8
8 Communication	3.01	(0.3)	(0.3)	1.2	(3.0)	(1.4)
9 Recreation & Culture	2.22	2.3	5.0	6.0	8.3	5.8
10 Education	3.37	3.9	3.9	5.8	10.6	6.4
11 Restaurants & Hotels	3.27	12.7	18.8	9.0	9.3	8.4
12 Miscellaneous Goods & Services	9.57	4.9	3.8	7.0	5.3	2.0
All-Items Index	100.0	12.6	8.2	6.9	8.5	7.5

Prices Collection Coverage for Botswana Consumer Price Index (CPI) - 2013



GLOSSARY

DEFINITION OF WORDS USED

Consumer Price Index (CPI) is an index which measures price changes in goods and services with reference to a base period.

Inflation is a measurement of prices movement of goods and services in a particular country.

Domestic Tradable refers to the goods and services which a country (Botswana) can export to other countries.

Imported Tradable represents the goods and services which a country (Botswana) imports from other countries (trading partners).

Non-Tradable refers to the goods and services which a country cannot either export or import to other countries.

All –Tradable refers to the total of **Domestic** and **Imported tradable**.

Trimmed Mean Core Inflation- attempts to remove 8 percent (by weight) of the commodity sub-groups with the largest price changes at each of the ends of an ordered series of price changes in any given month.

Core Inflation by Exclusion is a measure used to remove the volatility inherent in prices that are only adjusted periodically and not always in response to currently prevailing market forces.