



BOTSWANA TRANSPORT AND COMMUNICATIONS STATISTICS - 2010

Published by

Statistics Botswana
Private Bag 0024, Gaborone
Telephone: (+267) 3671300 Fax: (+267) 3956087
Email: csobots@gov.bw
Website: www.cso.gov.bw

Contact Unit: Transport and Communications Statistics Unit
Ministry of Transport and Communications

August 2012

COPYRIGHT RESERVED

*Extracts may be published if
source is duly acknowledge*

PREFACE

This report presents Botswana Transport and Communications Statistics for the calendar year 2010. It is aimed at enhancing and assisting the decision-making process within the transportation and communications sector relating to operational, sectoral, national or international purposes.

The report presents a summary of a diverse range of transport and communications statistics in tabular and graphical format. Topics include road network, traffic counts, motor vehicle population, road accidents, passenger and freight movements, employment, trade and gross domestic product attributed to the transport industry. Topics on communications include media, radio, television, postal services and phones. Information on rail and aviation is also provided

I hope you find this publication useful and interesting. The document is available as a PDF file in the Statistics Botswana web-site (<http://www.cso.gov.bw>).

Statistics Botswana acknowledges and extends gratitude to various Government Departments and/or organizations that provided information used in this publication



A. N. Majelantle
Acting Statistician General

August 2012

ABBREVIATIONS

..	Not Available
-	Zero Value
“BA” Permit	Botswana Annual Operations Permit
Kg	Kilogram
LDV	Light Duty Vehicle
“N”	North
“P” Permit	Passenger Permit
“S”	South
“W”	West
MTC	Ministry of Transport and Communications
Govt	Government
Km	Kilometre
CTO	Central Transport Organisation

TABLE OF CONTENTS

PREFACE.....	I
ABBREVIATIONS	II
TABLE OF CONTENTS.....	III
1. INTRODUCTION	1
2. TRANSPORT	2
2.1 National Road Network and Traffic Counts	2
2.1.1 Road Network.....	2
2.1.2 Traffic Counts.....	2
2.2 Motor Vehicle Registrations	3
2.2.1 National Vehicle Stock	3
2.2.2 Private Vehicle Stock	4
2.2.3 Government Vehicle Stock	12
2.3 Road Accidents	13
2.3.1 Accident Trend.....	13
2.3.2 Occurrences of Road Accidents by Type of Road Surface	14
2.3.3 Casualties.....	15
2.3.4 Time of Occurrence.....	19
2.3.5 All Road User Casualties by Type of Road User.....	21
2.3.6 Type of Accident.....	22
2.4 Civil Aviation	23
2.4.1 Aircraft Movements	23
2.4.2 Air Passenger Movements.....	23
2.4.3 Air Cargo & Mail Traffic.....	26
2.5 Railways	27
2.5.1 Rail Passengers.....	27
2.5.2 Goods Traffic	27
2.5.3 Revenue from Rail Goods	29
2.6 Contribution of The Transport Sector to GDP	30
2.7 Employment in the Transport Sector	30
3. COMMUNICATIONS	32
3.2. BOTSWANA POSTAL SERVICE	35
3.3 RADIO STATION AND TELEVISION.....	37
3.4 OWNERSHIP OF MEDIA DURABLES AND ACCESS TO MEDIA BY HOUSEHOLDS	38
APPENDIX 1: AVERAGE DAILY TRAFFIC.....	42
APPENDIX 2: MOTOR VEHICLE REGISTRATIONS.....	54
APPENDIX 4: AIRCRAFT AND PASSENGER MOVEMENT	57
APPENDIX 5: RAILWAYS.....	63
APPENDIX 6 : MEDIA.....	64

APPENDIX 7: BOTSWANA POSTAL SERVICES 69
APPENDIX 8: RADIO AND TELEVISION 77

1. INTRODUCTION

Transport and Communication facilities are a vital infrastructure of a modern economy. Transport system comprises several modes like road, railways, air transport and waterways while Communications include postal services, wireless and electronic media.

Good transport network is very important for Botswana as a landlocked country with an unevenly distributed population. A well established transport network system is vital for human movement as well as delivery of goods and services. Over the years, the Government of Botswana has channeled millions of Pula towards the construction of new roads and upgrading of existing ones and airports. At independence there was very little basic infrastructure apart from the railway line running from South Africa through Botswana to Zimbabwe. Infrastructure for transportation of goods, services and passengers has however improved substantially over the past four decades. From less than 10 kilometres of tarmac roads at independence, a system of tarred roads now link all of Botswana's major population centres and many other settlements; while a network of international airports and airfields provides easy access to tourist attractions as well as connecting the country to the wider Southern African Region. The transport portfolio covers motor vehicle registrations, construction and maintenance of roads, aviation and railway systems

Although water transport is of a small scale in Botswana, it plays a vital role in the lives of people living in the northern part of the country. Apart from fishing, the waters of the perennial rivers in the north are also used for movement of people and goods. Water enhances movement of people and goods locally and between Botswana and other countries.

Demand for Information and Communications Technology (ICT) statistics has increased over time with the country's need to monitor and review national policies and strategies on availability, access and the impact of ICT on development processes. To cater for this demand, a chapter on Communications is included and it provides statistics on Information and Communications Technology (ICT) indicators for 2010. Three Information and Communications Technology sub sectors (the Print Media, Postal Services and Radio Stations) during the period in consideration are covered.

Print Media: This covers government and privately owned newspapers countrywide, and are categorized into dailies (issued at least four times a week), and non dailies (issued once a week) and the magazines (issued once a month).

Postal Services: Postal Services help sustain the flow of information and facilitate the movement of goods and services. The products and services provided include mailing of letters, parcels and postal orders both locally and internationally.

Radio Station and Television: This covers a wide range of government and privately owned stations country wide. The Data was collected from a total of 3 radio stations on weekly broadcasting hours by month.

Telecommunications: Included in this area is information relating to Parastatal and privately owned telecommunication companies by fixed and mobile telephones on yearly basis.

2. TRANSPORT

2.1 National Road Network and Traffic Counts

2.1.1 Road Network

National road network is given by a combination of a set of roads maintained by Local Authorities and those in custody of the Central Government through the Department of Roads. Even though this is the case, the statistics contained in this report relate only to Central Government. To bridge this gap, Statistics Botswana has approached the Ministry of Local Governments to liaise with Local Authorities and put structures in place that will enable the availability of data required to compile these statistics.

The total road network maintained by the Central Government measured 9,132 km in 2000. The network reduced to 9,075 km in 2001 and further to 8,916 km in 2002. It then remained constant at 8,916 km during the following years until 2009 when it increased to 8,946 km. In 2010, the Central Government road network measured 8,946 km and was comprised of 6,780 km (75.8 percent) of bitumen, 867 km (9.7 percent) gravel and 1,299 km (14.5 percent) of sand. This trend is shown in Table 2.1a below.

Table 2.1a: The Length of Roads Maintained by Central government
by Type (km), 2000 - 2010

Year	Bitumen	Gravel	Sand	Total
2000	5,662	1,999	1,471	9,132
2001	5,804	1,800	1,471	9,075
2002	5,954	1,637	1,325	8,916
2003	6,116	1,501	1,299	8,916
2004	6,116	1,501	1,299	8,916
2004	6,367	1,250	1,299	8,916
2006	6,367	1,250	1,299	8,916
2007	6,396	1,221	1,299	8,916
2008	6,506	1,111	1,299	8,916
2009	6,780	867	1,299	8,946
2010	6,780	867	1,299	8,946

Source: Department of Roads

Table 2.1a further shows a steady increase in the total length of bitumen roads over the years and a gradual decrease in the length of gravel roads over the same period. The length of Sand roads has up to the year 2003 decreased from 1,471 km to 1,299 km; and thereafter remained constant at 1,299 km. In 2005, the length of gravel roads fell below that of sand roads.

2.1.2 Traffic Counts

Traffic volume is measured by regular traffic counts by the Department of Roads at different locations on gazetted roads. At each station, counts are carried out twenty-four hours for a period of seven consecutive days at least four times a year. Locations where these counts are made vary from year to year, which makes it

difficult to compare traffic volume from year-to-year. The data collected from these traffic counts are used to compile an inventory on road usage, and this allows transport planners to evaluate the level of usage of various road types.

Figures for the years 2009 and 2010 are not available as the Roads Department has temporarily suspended the data collection on traffic counts.

2.2 Motor Vehicle Registrations

This section provides information on motor vehicle registration and renewal of vehicle licenses.

2.2.1 National Vehicle Stock

In overall, there were 344,719 registered vehicles in Botswana at the end of 2010. This is an increase of 22.8 percent on the number registered at the end of 2009 (Table 2.2a). This growth was mostly contributed by privately owned vehicles which rose by 23.1 percent from 270,860 in 2009 to 333,451 in 2010 (Table 2.2b).

The increase in vehicle stock has resulted in the construction of better roads and increase in revenue collected from registration and licensing of vehicles as well as permits issued to goods and passenger carrying vehicles. On the other hand, this development has brought with it some major challenges like increase in road accidents as shown in section 4. This might also impact negatively on the durability or life span of our national roads. These effects would be felt most in the more populated areas, such as the eastern part of Botswana.

Table 2.2a: National Registered Vehicle Population, 2001 - 2010

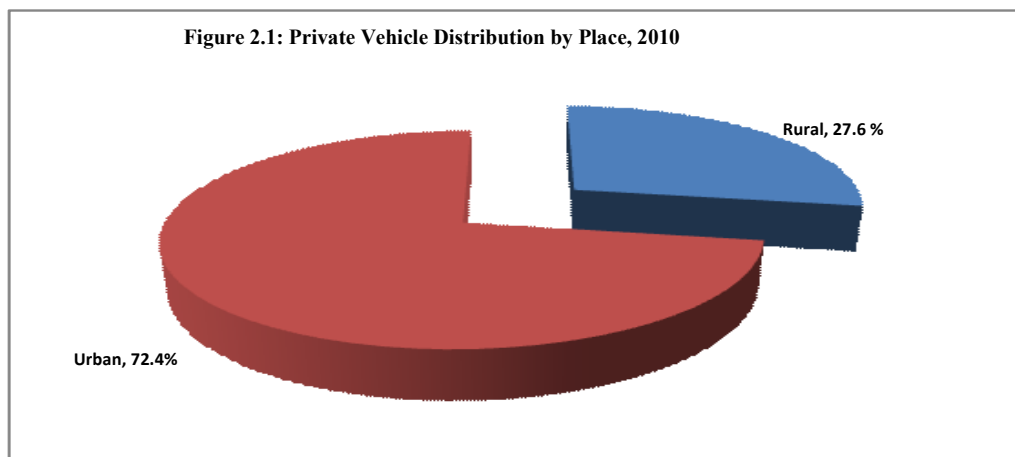
Year	Passenger		Trucks	Motor			Tankers/			Others	Total
	Cars	LDVs		Buses	Cycles	Tractors	Trailers	Horses			
2001	53,733	67,306	8,679	6,458	1,027	3,165	7,556	571	2,079	150,574	
2002	59,791	72,134	8,701	6,903	1,041	3,133	7,963	998	2,143	132,807	
2003	65,479	75,355	9,394	7,407	990	2,957	8,808	1,219	2,219	173,828	
2004	74,465	79,122	9,942	8,749	1,027	3,068	9,336	1,286	2,270	189,265	
2005	83,039	79,812	10,349	9,490	943	2,913	9,777	1,406	2,335	200,064	
2006	91,874	80,743	11,270	9,660	947	2,816	10,209	1,600	2,413	211,532	
2007	104,926	82,916	12,819	10,019	967	2,835	11,297	1,831	2,453	230,063	
2008	120,783	88,547	15,324	10,889	1,109	3,371	12,296	1,892	2,287	256,498	
2009	135,334	91,826	17,209	11,590	1,155	4,057	13,878	2,101	3,506	280,639	
2010	177,131	100,978	22,220	14,155	1,650	5,180	17,648	2,931	2,826	344,719	

Source: Department of Road Transport and Safety

Note: Buses include minibuses/combies.

2.2.2 Private Vehicle Stock

Private vehicles contributed 96.7 percent of the entire vehicle population in 2010. The distribution of private vehicle registration was 72.4 percent in urban areas in 2010. This is shown by figure 2.1.



2.2.2.1 Privately Owned Vehicles - Total Registrations by Year and Type of Vehicle

Total privately owned registered vehicles numbered 333,451 in 2010, having increased by 23.1 percent from 270,860 recorded in 2009 (Table 2.2b). Comparison of the number of total privately owned registered vehicles in 2010 and 2000 show an increase of more than 100 percent, from 131,270 in 2000 to 333,451 in the 2010.

Table 2.2b: Total Registrations of Privately Owned Vehicles by Year and Type of Vehicle, 2000 - 2010

Year	Passenger				Motor			Tankers/		Total
	Cars	LDVs	Trucks	Buses ¹	Cycles	Tractors	Trailers	Horses	Others	
2000	48,171	59,313	6,832	5,449	772	2,451	6,248	708	1,326	131,270
2001	52,873	62,765	7,392	6,055	833	2,900	6,554	277	1,377	141,026
2002	59,055	67,947	7,556	6,506	851	2,866	6,950	703	1,478	153,912
2003	64,681	70,923	8,173	7,012	804	2,694	7,710	940	1,565	164,502
2004	73,587	74,455	8,648	8,228	852	2,812	8,183	1,021	1,590	179,376
2005	82,056	74,387	8,992	8,913	772	2,638	8,614	1,121	1,550	189,043
2006	90,877	75,035	9,928	9,103	750	2,536	9,050	1,328	1,527	200,134
2007	103,980	77,659	11,537	9,522	788	2,550	10,152	1,568	1,647	219,403
2008	119,618	82,757	14,104	10,220	968	3,108	11,261	1,805	1,897	245,738
2009	133,295	87,231	16,210	10,976	1,042	3,794	12,843	2,000	3,496	270,860
2010	174,781	95,755	21,233	13,327	1,535	4,833	16,513	2,833	2,651	333,451

Source: Department of Road Transport and Safety

Buses¹ include minibuses/combies

Light Duty Vehicles (LDVs) recorded the highest number of registrations in the privately owned vehicle population from 2000 to 2004. This scenario changed in 2005 when passenger cars started to take the lead until 2010 (see Table 2.2b).

Registration of private motor vehicles grew gradually over the quarters of 2010. The highest number (28.5 percent) of registered vehicles was recorded during the last quarter, October – December (Table 2.2b). The third quarter had 25.9 percent of total privately owned registered vehicles in 2010 while the first quarter had the least.

Table 2.2c: Privately Owned Vehicles - Total Registrations by Type of Vehicle and Quarter, 2010

	Passenger Cars	LDVs	Trucks	Mini Buses	Buses	Motor Cycles	Tractors	Trailers	Tankers & Horses	Others	Total
Quarter 1	37,346	22,291	5,020	2,734	293	339	904	3,633	711	713	73,984
Quarter 2	40,566	23,223	5,035	2,859	340	346	761	3,747	674	644	78,195
Quarter 3	44,840	25,154	5,524	3,113	353	413	1,138	4,300	693	730	86,258
Quarter 4	52,029	25,082	5,659	3,256	379	441	2,030	4,828	746	564	95,014
Total	174,781	95,750	21,238	11,962	1,365	1,539	4,833	16,508	2,824	2,651	333,451

2.2.2.2 Privately Owned Vehicles - First Registrations by Year and Type of Vehicle

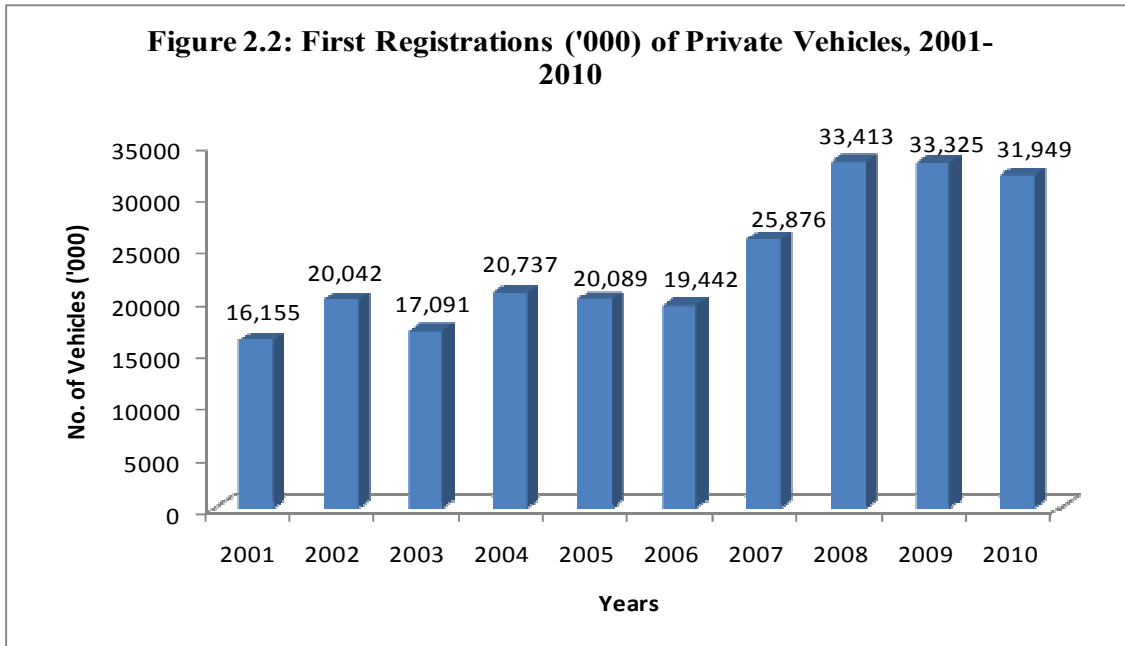
Vehicles registered for the first time in 2010 decreased by 4.1 percent from 33,325 vehicles registered in 2009 to 31,949 vehicles in 2010. Passenger cars accounted for 65.6 percent of vehicles which were registered for the first time in 2010 (see Table 2.2d and Figure 2.2).

Table 2.2d: Privately Owned Vehicles - First Registrations by Year and Type of Vehicle, 2001 - 2010

Year	Passenger Cars	LDVs	Trucks	Buses ¹	Motor Cycles	Tractors	Trailers	Tankers/ Horses	Others	Total
2001	7,465	5,492	963	788	137	180	841	37	252	16,155
2002	9,313	7,006	1,136	745	153	218	1,114	80	277	20,042
2003	8,272	5,031	1,170	804	97	170	1,061	162	324	17,091
2004	11,608	4,908	1,146	1,433	109	163	1,023	135	212	20,737
2005	12,905	3,110	1,219	1,298	110	141	960	167	179	20,089
2006	13,073	2,462	1,395	709	104	138	1,123	275	163	19,442
2007	16,538	3,935	2,121	784	164	226	1,457	326	325	25,876
2008	20,037	5,912	3,031	1,031	255	430	1,792	392	533	33,413
2009	19,354	5,831	2,970	1,136	241	801	2,029	396	567	33,325
2010	20,972	4,040	2,581	1,084	249	671	1,825	259	248	31,949

Source: Department of road Transport and Safety

Note: Buses¹ include Combies



2.2.2.3 Privately Owned Vehicles - First Registrations by Type of Vehicle and Registration Station

The Department of Road Transport and Safety (DRTS) has put in place some initiatives of reducing the distance travelled by customers to the nearest licensing office by taking their services to the people. This was done by opening more licensing offices around the country. This also aimed at coping with the increasing vehicle population and reducing the time taken by customers at service centres.

Table 2.2e: Privately Owned Vehicles- First Registrations by Station and Type of Vehicle, 2010

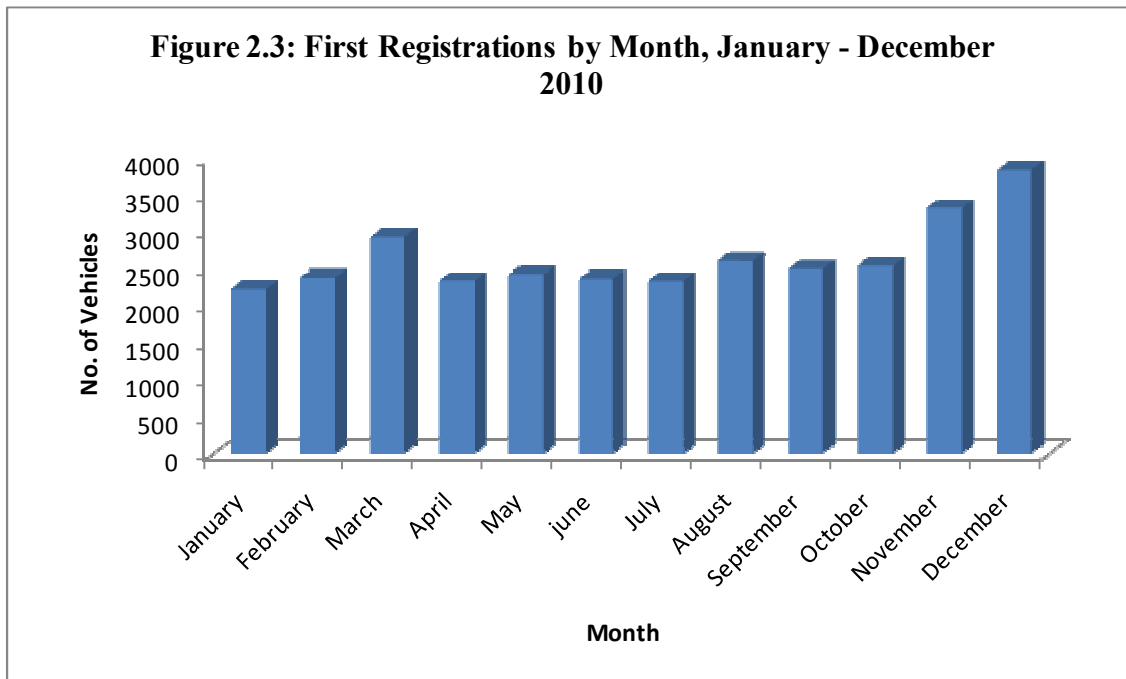
	Passenger		Trucks	Mini		Motor			Tankers/		Total
	Cars	LDVs		Buses	Buses	Cycles	Tractors	Trailers	Horses	Others	
Bobonong	13	11	1	-	-	-	1	4	-	-	30
Francistown	2,029	341	232	57	13	5	20	253	34	12	2,996
Gaborone	11,764	2,311	1,393	605	86	192	259	899	251	209	17,969
Gantsi	153	42	17	-	-	4	3	25	4	-	248
Gumare	4	2	3	-	-	-	1	1	-	-	11
Hukuntsi	-	-	-	-	-	-	-	-	-	-	-
Jwaneng	48	12	3	1	-	-	17	2	2	3	88
Kang	4	2	-	1	-	-	-	1	-	1	9
Kanye	70	12	9	6	2	-	35	14	-	-	148
Kasane	139	37	14	4	3	2	15	20	10	2	246
Letlhakane	91	23	14	6	1	1	5	22	-	-	163
Letlhakeng	-	-	-	-	-	-	-	-	-	-	-
Lobatse	1,553	180	114	49	6	5	106	77	17	4	2,111
Mahalapye	179	120	18	8	-	-	28	26	4	1	384
Masunga	10	-	1	-	-	-	2	1	-	-	14
Maun	475	276	55	13	-	15	15	87	1	1	938
Mochudi	65	17	16	5	2	1	22	57	1	32	218
Mogoditshane	2,452	82	483	121	7	3	24	65	10	7	3,254
Molepolole	86	19	6	2	1	1	20	31	1	5	172
Orapa	-	-	-	-	-	-	-	-	-	-	-
Palapye	552	77	79	15	4	2	24	72	16	16	857
Ramotswa	128	29	26	3	3	11	13	8	-	7	228
Selebi-Phikwe	657	230	65	38	7	7	36	99	9	37	1,185
Serowe	229	165	25	12	1	3	17	32	-	-	484
Sowa	29	10	-	1	-	-	1	6	-	1	48
Tatitown	-	-	-	-	-	-	-	-	-	-	-
Tsabong	18	25	8	-	-	1	2	3	-	6	63
Tutume	44	12	4	1	-	-	5	15	-	4	85
Total	20,792	4,035	2,586	948	136	253	671	1,820	360	348	31,949

Source: Department of Road Transport and Safety

There are currently 28 licensing stations around the country. Depending upon the population of vehicles, other stations like Gaborone have more than one licensing office. A greater number of vehicles were registered in Gaborone in 2010, accounting for 56.2 percent of new registrations. This was followed by Mogoditshane with 10.2 percent. Kang registered the least number of vehicles at 0.03 percent while there were no first registrations at Hukuntsi, Letlhakeng, Masunga, Orapa and Tatitown (Table 2.2e).

2.2.2.4 Privately Owned Vehicles - First Registrations by Type of Vehicle and Month of Registration.

There is not much variation between the months in which vehicles are first registered. Most of the vehicles were registered in the fourth quarter of 2010 (October – December), representing 30.4 percent of first registrations. Other quarters recorded around 24 percent of first registrations each (Figure 2.3).



Source: Department of Road Transport and Safety

2.2.2.5 Privately Owned Vehicles - First Registrations by Make and Type of Vehicle

The vehicle population is constituted by various makes of vehicles. Among the first registrations Toyota was the most common make in 2010 with 45.5 percent followed by Nissan (6.4 percent), Mazda (5.5 percent), Volkswagen (4.7 percent), Mitsubishi (3.9 percent), Hyundai (2.8 percent), Mercedes (2.6 percent) and Ford (2.2 percent). This is shown by Table 4.3 in Appendix 2.

2.2.2.6 Privately Owned Vehicles - Renewals by Year and Month of Registration

Most of the renewals were done in the months of October, November and December, making Quarter 4, 2010 the most favoured quarter for renewals in the year 2010. It constituted 28.3 percent of all renewals in 2010. Quarter 3, 2010 with 26.1 percent was the next in line in terms of the highest number of renewals in 2010. The least number of vehicles were renewed in Quarter 1, 2010 which accounted for 22.0 percent (Table 2.2f)

Table 2.2f: Privately Owned Vehicles- Renewals by Month of Registration and Type of Vehicle, 2010

Month	Passenger		Trucks	Mini	Buses	Motor		Tankers &			Total
	Cars	LDVs		Buses		Cycles	Tractors	Trailers	Horses	Others	
January	8,481	5,379	1,200	634	59	63	257	889	170	165	17,297
February	10,262	6,715	1,417	778	72	96	246	994	214	175	20,969
March	14,046	8,939	1,751	1,054	118	111	300	1,336	228	254	28,137
April	11,628	6,958	1,466	814	101	105	200	1,035	200	152	22,659
May	11,946	7,561	1,399	868	85	86	243	1,086	175	204	23,653
June	12,340	7,804	1,554	928	122	106	206	1,217	219	216	24,712
July	12,926	7,830	1,526	822	100	103	252	1,242	183	203	25,187
August	13,250	7,960	1,625	979	93	125	368	1,300	215	228	26,143
September	13,798	8,505	1,719	1,112	132	104	376	1,295	212	204	27,457
October	12,751	7,346	1,635	785	89	122	473	1,190	247	189	24,827
November	15,989	8,722	1,653	1,101	146	129	653	1,491	218	167	30,269
December	16,572	7,996	1,707	1,139	112	136	588	1,613	183	146	30,192
Quarter 1	32,789	21,033	4,368	2,466	249	270	803	3,219	612	594	66,403
Quarter 2	35,914	22,323	4,419	2,610	308	297	649	3,338	594	572	71,024
Quarter 3	39,974	24,295	4,870	2,913	325	332	996	3,837	610	635	78,787
Quarter 4	45,312	24,064	4,995	3,025	347	387	1,714	4,294	648	502	85,288
Total	153,989	91,715	18,652	11,014	1,229	1,286	4,162	14,688	2,464	2,303	301,502

Source: Department of Road Transport and Safety

Buses¹ include minibuses/combies

2.2.2.7 Privately Owned Vehicles - Renewals by Year and Type of Vehicle

Renewals are pre-existing vehicles at the beginning of every year. Renewals of privately owned vehicles increased by 26.9 percent from 237,535 vehicles in 2009 to 301,502 vehicles in 2010. Of all the privately owned vehicles which were renewed in 2010, passenger cars topped; they made 51.1 percent of the total. LDVs followed at 30.4 percent of the total. Motor cycles were the least among the privately owned renewals in 2010, they constituted for only 0.4 percent. Other details are as shown in Table 2.2g.

Table 2.2g: Privately Owned Vehicles - Renewals by Year and Type of Vehicle, 2001 - 2010

	Passenger		Motor				Tankers/		Others	Total
	Cars	LDVs	Trucks	Buses ¹	Cycles	Tractors	Trailers	Horses		
2001	45,408	57,273	6,429	5,267	696	2,720	5,713	240	1,125	124,871
2002	49,742	60,941	6,420	5,761	698	2,648	5,836	623	1,201	133,870
2003	56,409	65,892	7,003	6,208	707	2,524	6,649	778	1,241	147,411
2004	61,979	69,547	7,502	6,795	743	2,649	7,160	886	1,378	158,639
2005	69,151	71,277	7,773	7,615	662	2,497	7,654	954	1,371	168,954
2006	77,804	72,573	8,533	8,394	646	2,398	7,927	1,053	1,364	180,692
2007	87,442	73,724	9,416	8,738	624	2,324	8,695	1,242	1,322	193,527
2008	99,581	76,845	11,073	9,189	703	2,678	9,469	1,413	1,364	212,325
2009	113,941	81,400	13,240	9,840	801	2,993	10,814	1,604	2,902	237,535
2010	153,989	91,715	18,652	12,243	1,286	4,162	14,688	2,464	2,303	301,502

Source: Department of Transport and Safety

2.2.2.8 Privately Owned Vehicles - Renewals by Type of Vehicle and Registration Station

In 2010, the highest number of renewals was recorded in Gaborone, followed by Mogoditshane. Francistown came on the third spot (Appendix 2, Table 4.2). Passenger cars dominated in the renewals by type of vehicle in Gaborone during 2010, followed by LDVs, trucks, trailers and mini buses.

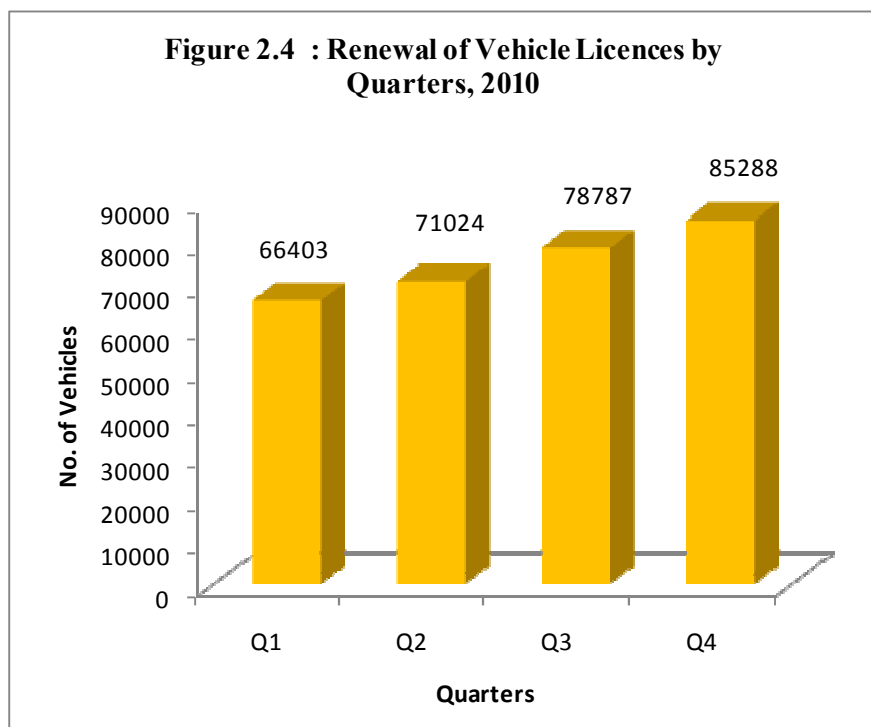
2.2.2.9 Privately Owned Vehicles - Renewals by Type of Vehicle and Month of Registration

Renewals of vehicle licenses grew steadily over the quarters of 2010 and reached the peak during the fourth quarter as displayed by Table 2.2h and Figure 2.4 below. The number of renewals for most of the types of vehicles peaked in December, except for buses, LDVs, tractors and other type of vehicles.

Table 2.2h: Privately Owned Vehicles - Renewals by Month of Registration and Type of Vehicle, 2010

Month	Passenger		Trucks	Mini		Motor		Tankers &			Total
	Cars	LDVs		Buses	Buses	Cycles	Tractors	Trailers	Horses	Others	
January	8,481	5,379	1,200	634	59	63	257	889	170	165	17,297
February	10,262	6,715	1,417	778	72	96	246	994	214	175	20,969
March	14,046	8,939	1,751	1,054	118	111	300	1,336	228	254	28,137
April	11,628	6,958	1,466	814	101	105	200	1,035	200	152	22,659
May	11,946	7,561	1,399	868	85	86	243	1,086	175	204	23,653
June	12,340	7,804	1,554	928	122	106	206	1,217	219	216	24,712
July	12,926	7,830	1,526	822	100	103	252	1,242	183	203	25,187
August	13,250	7,960	1,625	979	93	125	368	1,300	215	228	26,143
September	13,798	8,505	1,719	1,112	132	104	376	1,295	212	204	27,457
October	12,751	7,346	1,635	785	89	122	473	1,190	247	189	24,827
November	15,989	8,722	1,653	1,101	146	129	653	1,491	218	167	30,269
December	16,572	7,996	1,707	1,139	112	136	588	1,613	183	146	30,192
Quarter 1	32,789	21,033	4,368	2,466	249	270	803	3,219	612	594	66,403
Quarter 2	35,914	22,323	4,419	2,610	308	297	649	3,338	594	572	71,024
Quarter 3	39,974	24,295	4,870	2,913	325	332	996	3,837	610	635	78,787
Quarter 4	45,312	24,064	4,995	3,025	347	387	1,714	4,294	648	502	85,288
Total	153,989	91,715	18,652	11,014	1,229	1,286	4,162	14,688	2,464	2,303	301,502

Source Department of Road Transport and



2.2.3 Government Vehicle Stock

Government Vehicle Stock refers to vehicles owned by the Central Government and in custody of Central Transport Organization (CTO). CTO is a government department responsible for procurement, management, repair and disposal of government vehicles. In 2010, Government fleet increased by 15.2 percent; from 9,779 in 2009 to 11,268 in 2010 (see Table 2.2i).

Table 2.2i: Government Vehicles in Use by Year and Type of Vehicle, 2001-2010

Year	Passenger		Motor				Tankers/		Others	Total
	Cars	LDVs	Trucks	Buses ¹	Cycles	Tractors	Trailers	Horses		
2001	860	4,541	1,287	403	194	265	1,002	294	702	9,548
2002	736	4,187	1,145	397	190	267	1,013	295	665	8,895
2003	798	4,432	1,221	395	186	263	1,098	279	654	9,326
2004	878	4,667	1,294	521	175	256	1,153	265	680	9,889
2005	983	5,425	1,357	577	171	275	1,163	285	785	11,021
2006	997	5,708	1,342	557	197	280	1,159	272	886	11,398
2007	946	5,257	1,282	497	179	285	1,145	263	806	10,660
2008	1,165	5,790	1,220	669	141	263	1,035	87	390	10,760
2009	2,039	4,595	999	614	113	263	1,035	101	10	9,779
2010	2,350	5,228	982	828	111	347	1,140	107	175	11,268

Source: Central Transport Organisation

2.3 Road Accidents

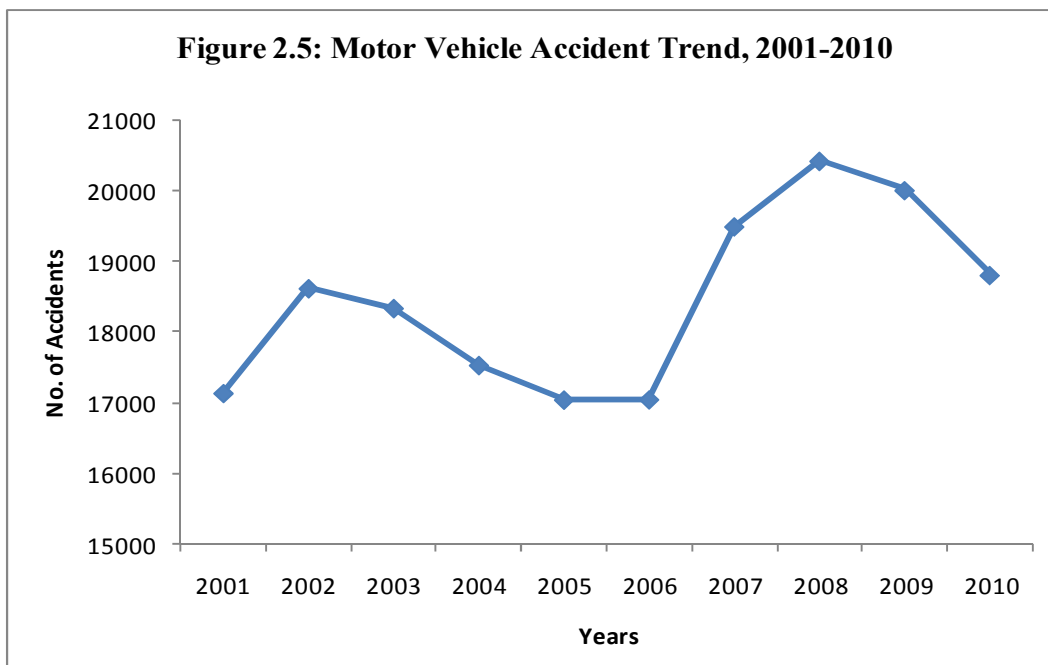
2.3.1 Accident Trend

The road accident statistics provided in this report relates only to road accidents reported to the Botswana Police Service. During a period of ten years, from 2001 to 2010, the number of road accidents adopted a downward slope in 2003 until 2006. In 2007 road accidents started increasing until 2009 when they slowed down to 20,000. They further decreased in 2010 to 18,798, showing a reduction of 6.0 percent between 2009 and 2010. This is shown by Table 2.3a and Figure 2.5.

Table 2.3a: Motor Vehicle Accident Trend, 2001 - 2010

Year	Number of Accidents	Registered Vehicles	Estimated Population ('000)	Accidents per '000 Vehicles	Accidents per 10,000 Population
2001	17,125	150,574	1,622	114	106
2002	18,610	162,807	1,650	114	113
2003	18,328	173,828	1,673	105	110
2004	18,136	189,265	1,693	96	107
2005	17,522	200,064	1,708	88	103
2006	17,035	211,532	1,720	81	99
2007	19,487	230,063	1,736	85	112
2008	20,415	256,498	1,755	80	116
2009	20,000	280,639	1,776	71	113
2010	18,798	333,451	1,800	56.4	104

Source: Botswana Police Service (Road Traffic Accident Statistics Office)



2.3.2 Occurrences of Road Accidents by Type of Road Surface

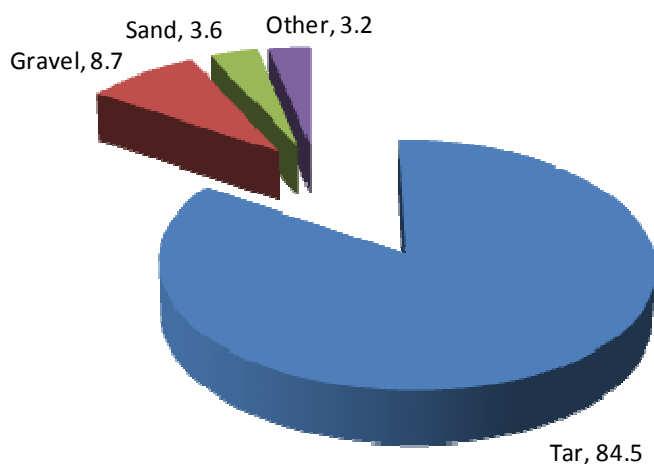
Table 2.3b below shows that most of road accidents occurred on tarred roads. This could have resulted from the fact that tarred roads carry the heaviest traffic volume compared to other types of roads. In 2010, accidents that occurred on tarred roads constituted 84.5 percent of all of the recorded accidents. This proportion, 84.5 percent, was also registered in 2009 (see figure 2.6).

Table 2.3b: Number of Road Accidents by Type of Road Surface, 2005 – 2010

Type of Road Surface	2007	2008	2009	2010	Percentage Contribution (2010)
Tarred road	16,649	17,893	16,899	16,041	84.5
Gravel road	1,781	1,616	1,786	1,649	8.7
Sand road	663	488	690	675	3.6
Other road	394	418	625	613	3.2
Total	17,706	20,415	20,000	18,978	100

Source: Botswana Police Service (Road Traffic Accident Statistics Office)

Figure 2.6: Accident Occurrence (%) by Type of Road, 2010



2.3.3 Casualties

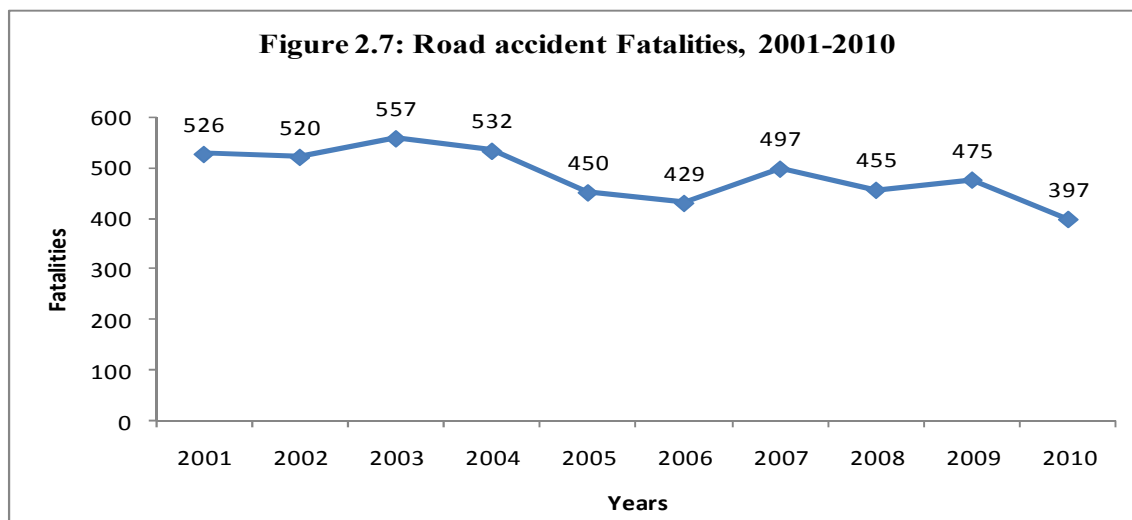
Out of the total number of road accidents which were recorded in 2010, 6,430 of them resulted in human casualties. This is a 19.3 percent decrease from 7,970 casualties in 2009. These casualties range from minor injuries to serious injuries and deaths. In 2010 there were 397 deaths, 1,252 serious injuries and 4,781 minor injuries. This reflects that fatalities went down by 16.4 percent while serious injuries went down by 18.7 percent and minor injuries went down by 19.7 percent (Table 2.3c).

Table 2.3c: Road Casualties by Year and Type of Casualty, 2001 – 2010

Year	Fatal	Serious Injuries	Minor Injuries	Not Known	Total
2001	526	1,853	5,566	-	7,945
2002	520	1,781	5,713	-	8,014
2003	557	1,853	5,553	-	7,963
2004	532	1,602	5,706	-	7,840
2005	450	1,520	5,099	-	7,069
2006	429	1,235	5,274	14	6,952
2007	497	1,494	5,648	-	7,639
2008	455	1,522	6,183	-	8,160
2009	475	1,540	5,955	-	7,970
2010	397	1,252	4,781	-	6,430

Source: Botswana Police Service (Road Traffic Accident Statistics Office)

Figure 2.7 shows a trend of road fatalities observed over a period of ten years, from 2001 to 2010. The number of road fatalities has been fluctuating over the years. After going up in 2003, the number of fatalities adopted a downward slope for three consecutive years. The figure went up in 2007 and dropped in 2008, went up in 2009 and dropped in 2010. This brought the number of human lives lost during the past ten years to 4,838. The number is likely to be high because some road victims die months later after the accidents and therefore they are not recorded. From 2000 to 2004, fatalities per 100,000 Population were slightly above 30 and dropped below 30 from 2005 to 2009.



2.3.3.1 Causes of Road Casualties

There are various factors or causes of accidents which result in human casualties on our national roads. These range from human to natural causes. According to Table 2.3d, 'Driver Carelessness' was the most common cause of human casualty followed by 'Pedestrian Error' on the road and 'Vehicle Defects'. Some avoidable factors such as 'Unlicensed Drivers' also had a significant contribution. It came on the fifth position.

Table 2.3d: Causes of Casualties by Type of Casualty- 2010

Causes of Road Casualties	Fatalities	Serious Injuries	Minor Injuries	Total	Percentage Contribution
Driver Fatigue	6	14	33	53	0.8
Under influence of alcohol/drugs	12	36	162	210	3.3
Unlicensed Driver	13	54	255	322	5.0
Pedestrian error	37	129	331	497	7.7
Driver Carelessness	239	770	3,112	4,121	64.1
Passenger Error	9	24	48	81	1.3
Animals (domestic/wild)	12	41	333	386	6.0
Obstruction	2	8	24	34	0.5
Vehicle Defects	38	99	324	461	7.2
Road Surface condition		13	57	70	1.1
Weather Condition		1	5	6	0.1
Use of Cellphone		1	11	12	0.2
Other Causes	29	62	86	177	2.8
Total	397	1,252	4,781	6,430	100.0

Source: Botswana Police Service (Road Traffic Accident Statistics Office)

2.3.3.2 Casualties by Gender

Males were more vulnerable to road casualties than their female counterparts in all the three casualty categories. They accounted for 65.3 percent of all human casualties in 2010. During the same year, 287 males lost their lives to road accidents compared to 110 females. See Table 2.3e.

Table 2.3e: Casualties by District and Gender, 2010

District	Casualty Injury by Gender							
	Males				Females			
	Fatalities	Serious	Minor	Total	Fatalities	Serious	Minor	Total
Francistown	11	30	164	205	3	11	126	140
Gaborone	18	78	302	398	5	42	228	275
Gaborone West	36	121	434	591	13	44	288	345
Kanye	20	67	194	281	5	25	89	119
Kasane	10	20	42	72	8	8	17	33
Kutlwano	15	46	253	314	5	28	114	147
Letlhakane	17	44	126	187	9	15	47	71
Lobatse	8	38	107	153	4	17	63	84
Maun	15	75	155	245	8	34	91	133
Gantsi	5	21	113	139	5	17	39	61
Molepolole	25	45	312	382	8	26	178	212
Mochudi	33	73	159	265	16	49	104	169
Selebi Phikwe	14	55	210	279	6	30	86	122
Serowe	51	121	403	575	12	55	222	289
Tsabong	9	11	91	111	3	6	24	33
Total	287	845	3,065	4,197	110	407	1,716	2,233

Source: Botswana Police Service (Road Traffic Accident Statistics Office)

2.3.3.3 Casualty by District

District here refers to Police Districts as defined in the appendix. Table 2.3e shows that in 2010, Gaborone West recorded the highest number of human casualties followed by Serowe. Gaborone and Molepolole came third and fourth respectively. Though Gaborone West recorded a higher number of accidents when compared to Serowe, it had a lower number of fatalities.

As compared to 2009, there were reductions in recorded human casualties in Lobatse, Kasane, Tsabong, Gaborone, Kutlwano, Letlhakane, and Francistown in 2010. The number of casualties in the remaining districts went up in 2010 as compared to 2009.

2.3.3.4 Pedestrian Casualties

The number of pedestrians who got involved in road accidents decreased by 8.2 percent in 2010 from the value recorded in 2009. Pedestrian casualties went down from 1,606 in 2009 to 1,474 in 2010. Out of this number, 118 pedestrians died while 323 were seriously injured and 1,033 incurred minor injuries. . Most pedestrian casualties occurred in Gaborone West and Gaborone districts. However, pedestrian fatalities increased by 3.5 percent from 114 in 2009 to 118 in 2010. This is shown by Table 2.3f below.

Table 2.3f: Pedestrian Victims by District and Severity of Injury, 2010

District	Casualty Status			Total	Total 2009
	Fatal	Serious	Minor		
Francistown	4	11	81	96	117
Gaborone	15	72	200	287	145
Gaborone West	19	63	234	316	303
Kanye	4	26	47	77	66
Kasane	1	1	1	3	81
Kutlwano	10	20	87	117	15
Letlhakane	7	8	17	32	5
Lobatse	6	18	54	78	32
Maun	6	20	51	77	21
Gantsi	2	3	10	15	70
Molepolole	10	12	82	104	88
Mochudi	11	25	34	70	52
Selebi Phikwe	5	10	40	55	375
Serowe	15	30	85	130	91
Tsabong	3	4	10	17	145
Total	118	323	1,033	1,474	1,606
Total 2009	114	341	1,151	1,606	

Source: Botswana Police (Road Traffic Accident Statistics Office)

Pedestrians of age group 21-25 were the most vulnerable to road accidents followed by those in 5 - 9, 26 – 30 and 16 – 20 age groups respectively. Age group 0 – 4 had the highest number of pedestrian fatalities followed by age group 5 – 9. With respect to serious injuries, age group 5-9 dominated followed by age group 21 - 25(see Table 2.3g).

Table 2.3g: Pedestrian Victims by Age Group and Severity of Injury - 2009

Age Group	Fatal	Serious Injury	Minor Injury	Total
0-4	18	29	71	118
5-9	13	49	134	196
10-14	4	20	87	111
16-20	7	35	136	178
21- 25	8	44	152	204
26 – 30	11	36	145	192
31 – 35	7	28	80	115
36 – 40	5	23	63	91
41 – 45	9	13	43	65
46 – 50	6	12	31	49
51 – 55	10	13	30	53
56 – 60	5	5	24	34
61 – 65	3	5	12	20
66 – 70	4	3	7	14
71 – 75	1	2	9	12
>75	7	6	10	23
Total	118	323	1,034	1,475

Source: Botswana Police Service (Road Traffic Accident Statistics Office)

2.3.3.5 Driver Casualty

Driver casualty in this case relates only to drivers who got injured out of the total number of drivers involved in accidents. The number of drivers who were injured in road accidents went down by 22.7 percent from 2,563 in 2009 to 1,981 in 2010. Age group 26 – 30 recorded the highest number of driver casualty with 25.7 percent followed by age group 31 – 35 with 20.4 percent (Table 2.3h).

Table 2.3h: Driver Casualties by Age Group and Severity of Injury, 2010

Casualty by age	Drivers			Total
	Fatalities	Serious	Minor	
Age				
0-4	-	1	-	1
5-9	-	-	1	1
10-14	1	7	7	15
16-20	1	8	34	43
21-25	6	35	159	200
26-30	18	84	408	510
31-35	21	74	310	405
36-40	17	44	244	305
41-45	13	30	117	160
46-50	11	23	103	137
51-55	8	12	71	91
56-60	4	8	49	61
61-65	4	1	27	32
66-70	-	2	7	9
71-75	-	-	6	6
>75	1	1	3	5
Total	105	330	1,546	1,981

Source: Botswana Police Service (Road Traffic Accident Statistics Office)

2.3.4 Time of Occurrence

Road accidents occur 24 hours in a day. The recorded figures show that accidents happen more often between 6:00 in the morning and 12:00 midnight; the highest number of road accidents having been recorded between 1800 – 2000 hours. Accidents usually reduce towards midnight and early morning hours (Table 2.3i and Figure 2.8).

Table 2.3i: Accident Casualties and Severity by Time of Occurrence, 2010

Time	Accident Severity				Total
	Fatal Crashes	Serious Crashes	Minor Crashes	Damage Only	
00-02	19	33	110	499	661
02-04	17	27	86	328	458
04-06	24	28	108	459	619
06-08	23	62	271	1,346	1,702
08-10	16	41	202	1,229	1,488
10-12	14	70	235	1,503	1,822
12-14	31	69	277	1,609	1,986
14-16	34	89	316	1,711	2,150
16-18	37	95	383	1,850	2,365
18-20	53	137	410	1,910	2,510
20-22	36	103	268	1,504	1,911
22-24	23	69	214	1,000	1,306
Total	327	823	2,880	14,948	18,978

Source: Botswana Police Service (Road Traffic Accident Statistics Office)

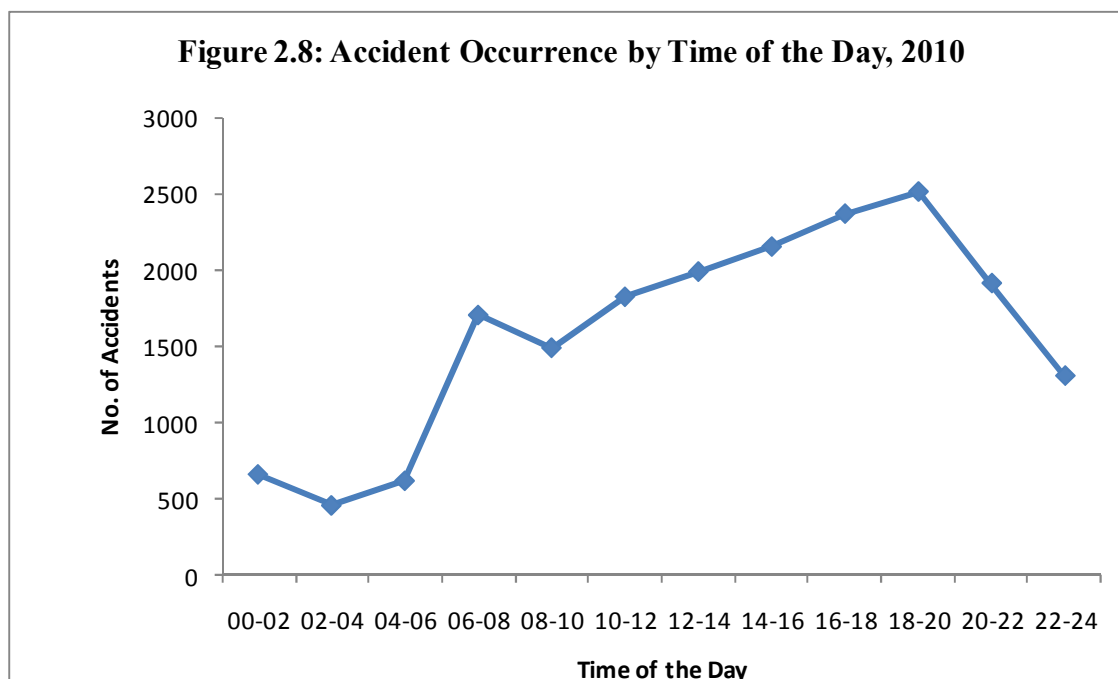


Table 2.3j: Motor Vehicle Accidents by District and Time of Occurrence, 2010

Time of the Day the Accident Occurred (Hours)

District	00-02	02-04	04-06	06-08	08-10	10-12	12-14	14-16	16-18	18-20	20-22	22-24	Total
Francistown	26	20	20	83	99	129	119	134	127	116	64	58	995
Gaborone	118	95	92	439	399	507	618	579	605	418	315	233	4,418
G / West	170	100	118	540	359	406	470	504	585	582	431	346	4,607
Gantsi	10	2	8	16	17	39	29	30	36	41	29	16	273
Kanye	34	24	49	72	65	77	97	85	107	158	135	82	985
Kasane	5	11	10	15	14	19	19	17	27	18	19	6	180
Kutlwano	36	24	42	81	64	82	98	86	121	134	103	57	928
Letlhakane	21	18	24	38	40	44	47	49	62	88	86	40	557
Lobatse	23	17	18	30	34	58	50	62	56	79	59	37	523
Maun	22	16	19	68	69	73	56	94	108	106	66	56	753
Mochudi	41	24	36	55	47	71	63	108	83	141	108	70	847
Molepolole	41	28	42	80	72	78	75	113	118	161	112	65	985
S / Phikwe	37	18	39	53	56	59	67	70	99	137	126	66	827
Serowe	70	54	89	118	127	152	152	196	196	291	224	152	1,821
Tsabong	7	7	13	14	29	28	26	23	35	41	34	22	279
Total	661	458	619	1,702	1,488	1,822	1,986	2,150	2,365	2,510	1,911	1,306	18,978

Source: Botswana Police Service (Road Traffic Accident Statistics Office)

Most of the accidents occurred between 6am and 10pm in all the districts (Table 2.3j) and the peak of the accidents is between 1800hrs and 2000hrs.

2.3.5 All Road User Casualties by Type of Road User

Cars were not the main contributor to human casualty for drivers only but to other road users as well. Looking at road user casualty by mode of transport, car users were at the highest risk. They accounted for 38.9 percent of road casualties, followed by pickup users who accounted for 26.3 percent (see Table 2.3k).

Table 2.3k: Casualty Injury by Vehicle Type, 2010

Vehicle Type	Casualty Injury			Total
	Fatalities	Serious Injuries	Minor Injuries	
Bicycle	2	13	52	67
Motor cycle	4	17	61	82
Car	138	451	1,911	2,500
Taxi	6	9	96	111
4- wheel drive	30	101	359	490
Pick-up	111	350	1,231	1,692
Light duty Vehicle	33	92	278	403
Lorry	20	46	148	214
Lorry with Trailer	11	12	39	62
Mini- Bus	11	76	321	408
Bus	8	17	37	62
Tractor	6	4	7	17
Animal drawn	1	11	61	73
Other	16	53	180	249
Total	397	1,252	4,781	6,430

Source: Botswana Police Service (Road Traffic Accident Statistics Office)

2.3.6 Type of Accident

There are various ways in which accidents may occur. This sub-section looks at how accidents happen on our road network. Table 2.3l show that 'Roll Over' was the most common type of road accident in 2010. This type of accident accounted for 24.9 percent followed by 'Hitting Pedestrian' and 'Hitting on Side' with 23.7 percent and 12.8 percent respectively.

Table 2.3l: Casualties and Severity of Injury by Collision Type, 2010

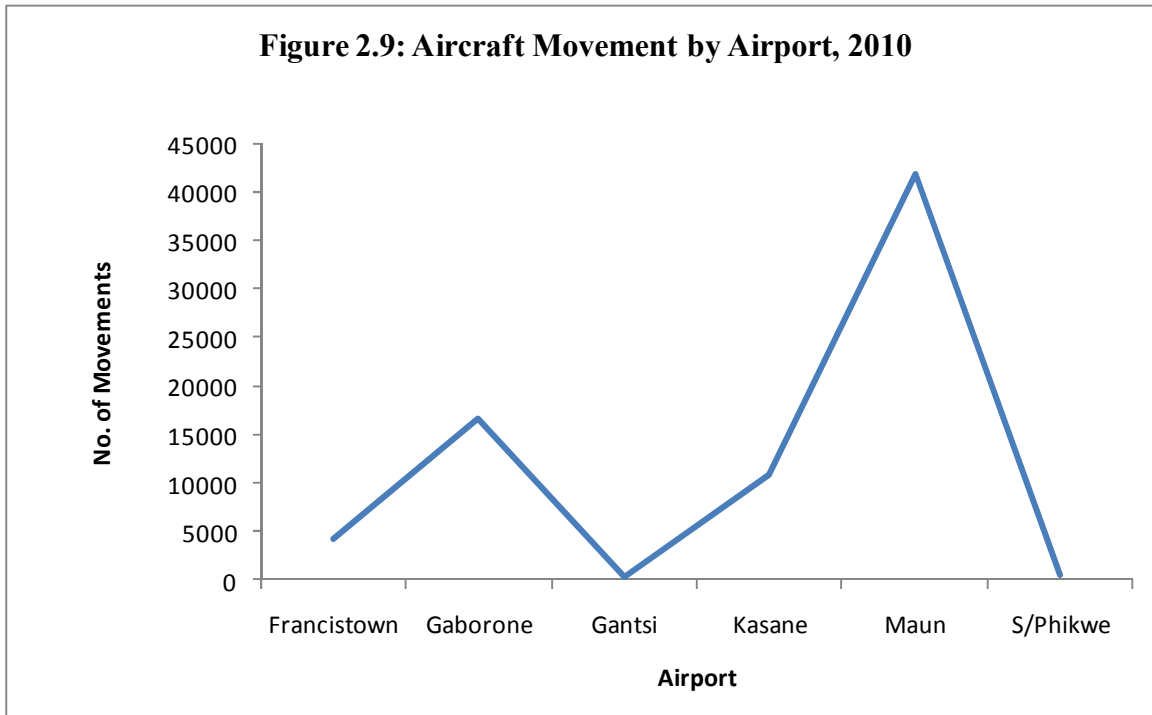
Collision Type	Casualty Injury			Total
	Fatalities	Serious Injuries	Minor Injuries	
Rear -End	13	51	507	571
Side	21	120	679	820
Head On	66	122	238	426
Hit Pedestrian	118	331	1,076	1,525
Wild Animal	1	18	59	78
Domestic Animal	16	53	341	410
Obstacle	16	58	240	314
Roll Over	116	375	1,108	1,599
Other	30	124	533	687
	397	1,252	4,781	6,430

Source: Botswana Police (Road Traffic Accident Office)

2.4 Civil Aviation

2.4.1 Aircraft Movements

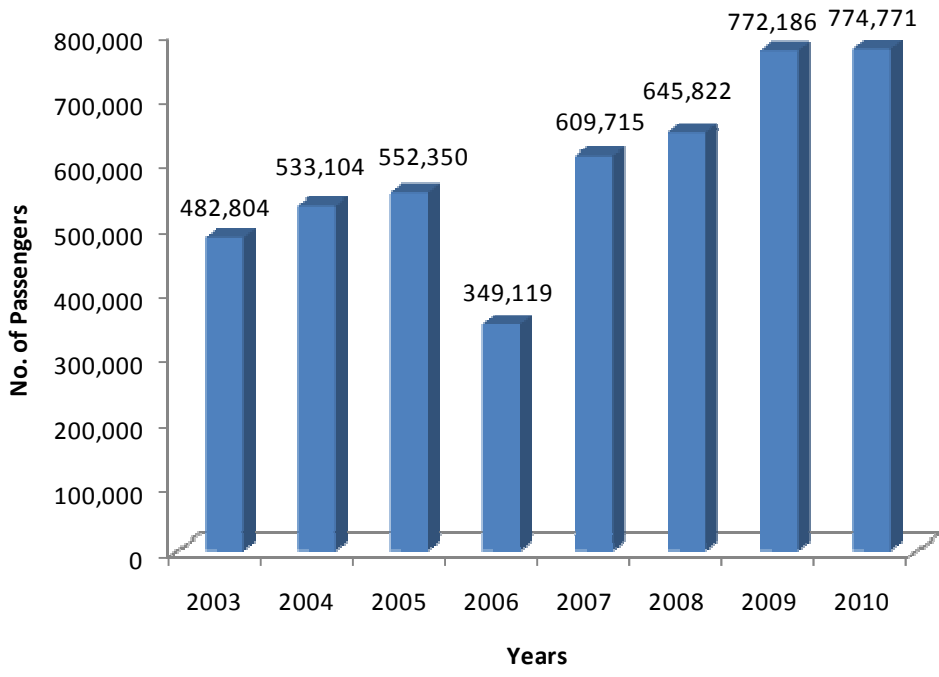
Total aircraft movements went down by 27.4 percent from 102,526 in 2009 to 74,453 in 2010. Maun airport was the busiest as it accounted for 56.4 percent of all aircraft movements which occurred in 2010. Gantsi airport had the least number of aircraft movements (see Figure 5.1 and Table 4.5 in Appendix 4).



2.4.2 Air Passenger Movements

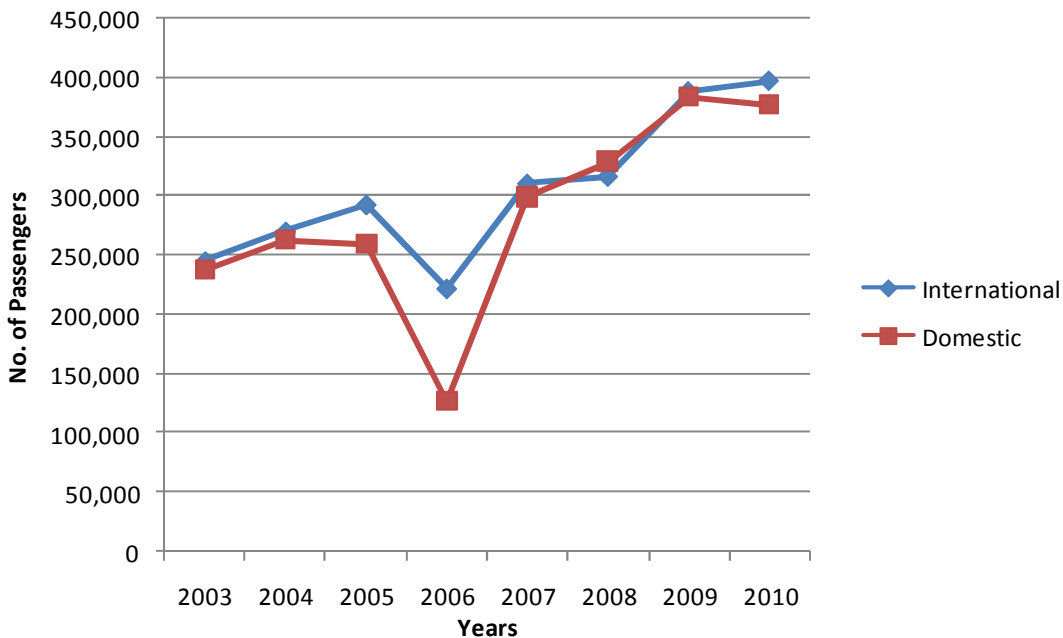
The total number of air passengers carried in 2010 increased by 0.3 percent from 772,186 in 2009 to 774,771 passengers. Gaborone airport had the highest number of air passenger movement as it accounted for 55.8 percent of total movements in 2010. Gantsi recorded the least number of air passenger movements. (see Table 4.6 in Appendix 4).

Figure 2.10: Passenger Movement by Years, 2003 - 2010



International passenger movements rose by 2.3 percent from 388,690 passengers in 2009 to 397,519 in 2010. In the same year domestic movements decreased by 1.6 percent from 383,496 passengers in 2009 to 377,252 passengers in 2010. (Figure 5.3 and Table 4.6 in Appendix 4).

Figure 2.11: Passenger Movement by Type of Flight, 2003 - 2010



For international passenger movements, more passengers departed rather than arrived, whereas in the domestic market, more passengers arrived rather than departed. The busiest airports are Maun and Gaborone.

2.4.2.1 Passenger Arrivals and Departures

Total air passengers arrivals grew by 0.6 percent from 385,096 passengers in 2009 to 387,416 passengers in 2010. Departing passengers went up by 0.1 percent from 387,090 passengers in 2009 to 387,355 passengers in 2010.(see Table 4.6 in Appendix 4).

2.4.2.2 Scheduled and Non – Scheduled Passenger Movements

Currently there are four (4) commercial airlines which operate between Botswana and other countries on scheduled movements. These are Air Botswana, Soth African Airways, Kenya Airways and Namibian Airways. Air Botswana also operates some local flights within the country. Scheduled passenger movements increased by 4.3 percent while Non-Scheduled passenger movements went down by 6.1 percent. Private passenger movements decreased by 17.2 percent.(see Table 4.7 in Appendix 4).

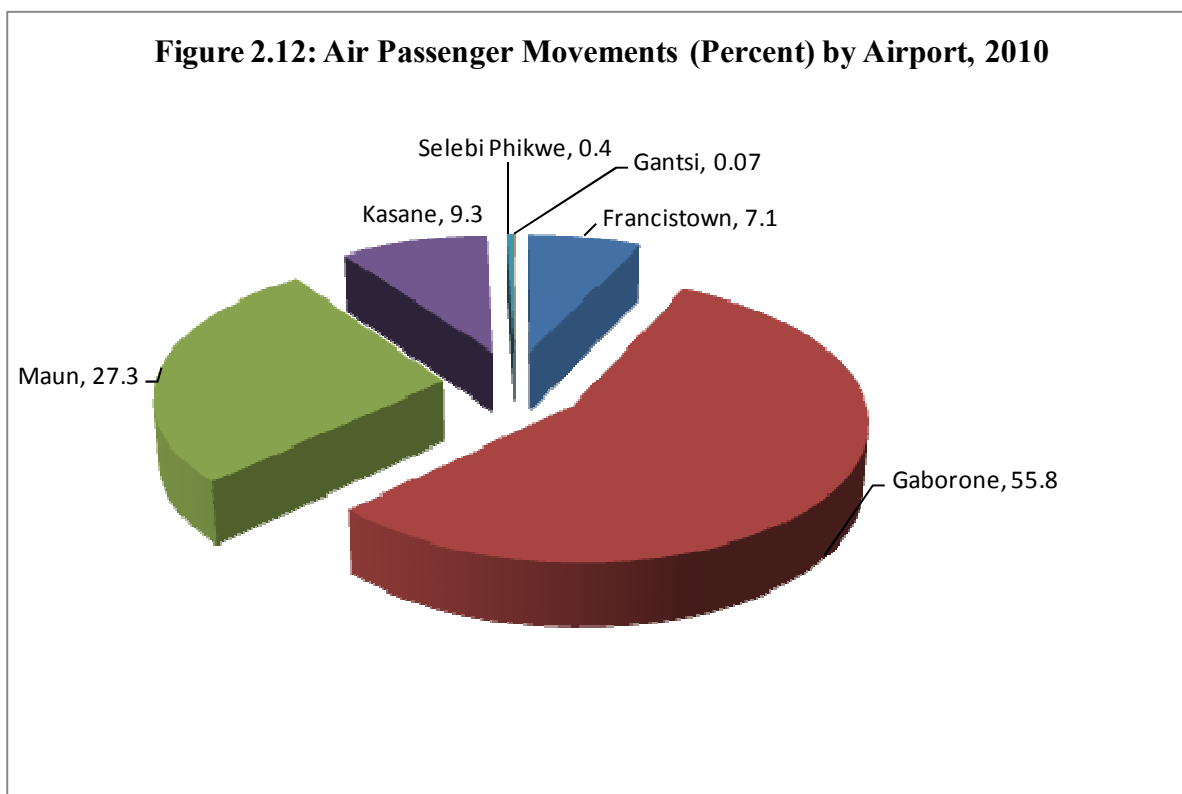


Figure 5.4. gives a graphical presentation of total air passengers handled by each airport (in percentage points) in 2010.

2.4.3 Air Cargo & Mail Traffic

There was a 13.8 percent decrease in total Air Cargo conveyed in 2010. It went down from 936,887 kg in 2009 to 807,361 kg in 2010.

Mail traffic increased by 71.0 percent from 1,683 kg in 2009 to 2,878 kg in 2010. The increase was a result of a rise in mail that was conveyed domestically (Table 2.4a).

Table 2.4a: Civil Aviation - Cargo and Mail Traffic, 1996 – 2010

Year	Cargo Traffic (Kgs)			Mail Traffic (Kgs)		
	International	Domestic	Total	International	Domestic	Total
1996	330,237	214,208	544,445	67,615	9,804	77,419
1997	311,875	169,781	481,656	34,157	6,563	40,720
1998	277,310	145,324	422,634	17,226	10,970	28,196
1999	353,413	163,002	516,415	29,446	14,964	44,410
2000	524,979	171,084	696,063	34,115	11,272	45,387
2001	572,221	172,020	744,241	36,284	5,171	41,455
2002	477,232	205,678	682,910	29,734	177	29,911
2003	545,094	211,753	756,847	34,274	3,838	38,112
2004	716,005	204,550	920,555	22,220	978	23,198
2005	743,222	198,131	941,353	5,989	1,406	7,395
2006	798,084	222,208	1,020,292	164	1,919	2,083
2007	847,995	250,202	1,098,197	35	1,306	1,341
2008	840,318	227,521	1,067,839	26	1,429	1,455
2009	704,397	232,490	936,887	-	1,683	1,683
2010	260,246	547,115	807,361	-	2,878	2,878

Source: Air Botswana

2.5. Railways

2.5.1 Rail Passengers

The passenger train has been terminated since March 2009, hence there are no passenger figures from then onwards (see Table 2.5a).

Table 2.5a: Railways – Passengers by Class and Revenue, 2001 – 2010

Year	1 st Class	Club Class	2 nd Class	Economy	Total Passengers	Revenue (Pula)
2001	8,447,383
2002	528,143	9,914,338
2003	572,001	8,929,884
2004	406,191	8,418,797
2005	2,158	2,487	7,687	370,263	382,595	8,891,302
2006	3,126	1,918	7,022	414,828	426,894	10,175,527
2007	4,584	11,619	8,050	358,558	382,811	10,392,467
2008	5,180	13,043	8,568	364,259	391,050	11,247,338
2009
2010

Source: Botswana Railways

2.5.2 Goods Traffic

Amount of goods carried went up by 4.3 percent from 1,927,439 net tonnes in 2009 to 2,011,163 net tonnes in 2010. All categories of goods movement by direction went up (see Table 2.5b). As a result, revenue derived from goods went up by 9.8 percent during the same period (see Table 4.8 in Appendix 5). Figure 6.1 below shows quantity of goods (in million net tonnes) carried by rail over a period of ten years.

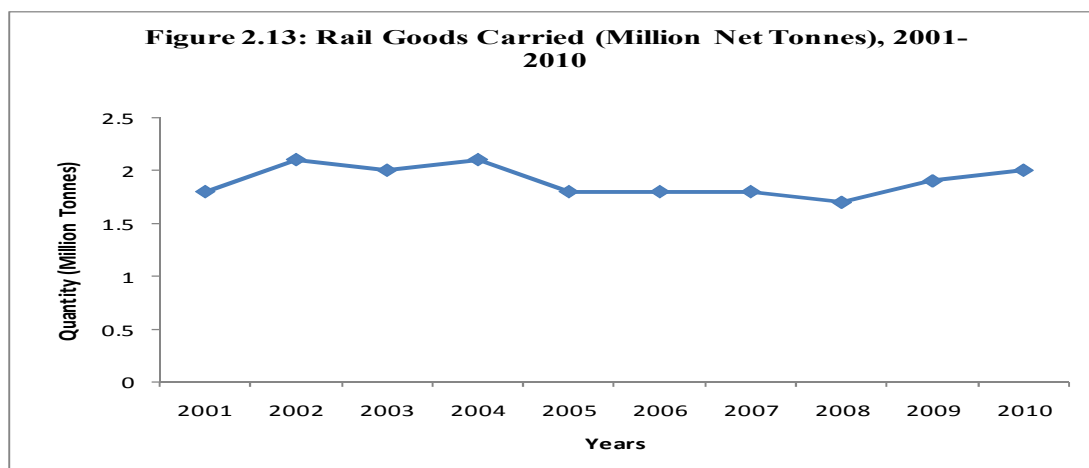


Table 2.5b: Railways – Goods Traffic by Direction (Net tonnes), 2002 – 2010

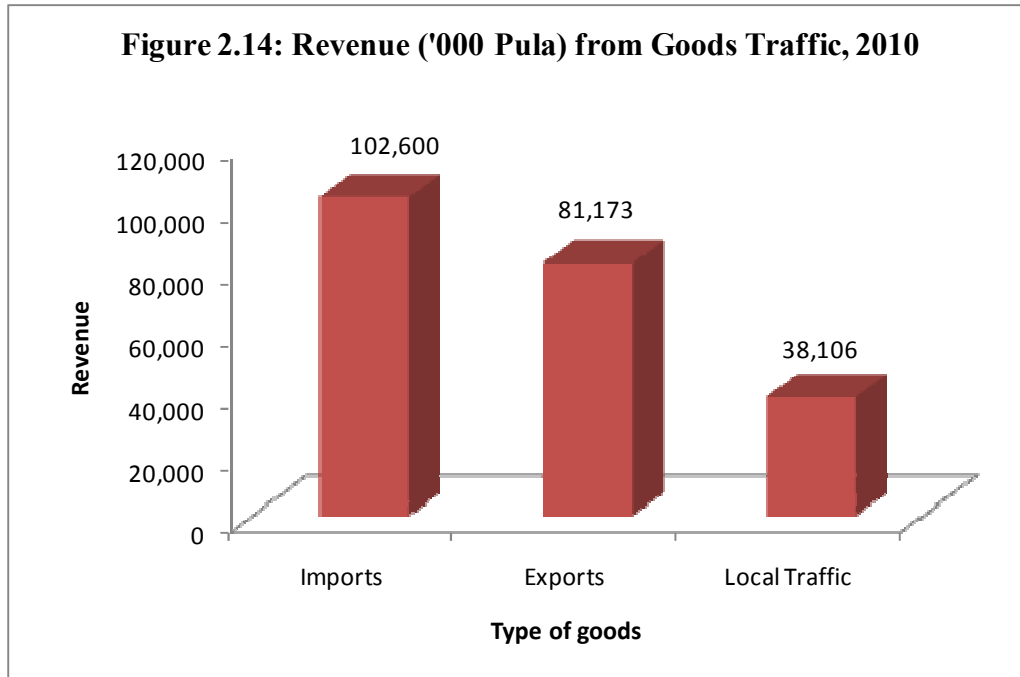
	Imports			Exports			Local Traffic	Botswana Origin	Botswana Total	Transit Traffic	Total Traffic	
	From North	From South	Total Imports	To North	To South	Total Exports						
2002	130,447	719,886	850,332	127,343	245,903	473,245	354,114	827,359	1,677,692	264,251	1,941,943	
2003	127,873	836,992	964,865	106,684	328,433	435,117	356,616	791,733	1,756,598	239,231	1,995,829	
2004	95,442	1,426,139	1,521,436	88,812	323,944	410,611	283,409	695,875	2,217,166	176,268	2,393,289	
2005	108,123	687,578	795,701	113,960	456,377	570,337	323,942	1,169,211	2,339,754	107,071	1,797,051	
2006	100,807	644,469	745,276	123,824	386,688	510,512	343,026	853,538	1,598,814	113,793	1,712,607	
2007	113,883	758,577	872,460	77,435	456,327	533,762	342,761	876,523	1,748,983	1,677	1,750,660	
2008	74,742	768,265	843,007	48,618	483,322	531,940	336,942	868,882	1,711,8891	47,610	1,759,499	
2009	3,463	99,402	102,685	3,707	71,577	77,054	30,586	105,849	208,031	3,804	212,318	
2010	62,639	1,002,555	1,065,194	69,247	467,737	536,984	304,633	772,370	835,009	104,352	939,361	
2009	Jan	507	7,258	7,786	388	6,151	6,539	2,330	8,869	16,635	604	17,239
	Feb	296	7,023	7,319	286	5,928	6,214	1,706	7,920	15,239	833	16,072
	Mar	316	9,406	9,721	474	7,909	8,383	2,299	10,682	20,403	602	21,005
	Apr	218	7,161	7,379	256	5,758	6,014	2,596	8,609	15,988	75	16,063
	May	378	9,250	9,628	408	5,186	5,594	2,755	8,349	17,977	-	17,977
	Jun	248	7,923	8,171	322	5,361	5,538	2,725	8,408	16,579	187	16,766
	Jul	146	7,023	7,169	207	5,329	4,925	2,589	8,105	15,274	296	15,570
	Aug	295	7,928	8,223	426	4,499	6,426	2,609	7,534	15,274	421	16,178
	Sept	273	9,063	9,336	160	6,266	6,451	2,761	9,187	18,523	264	18,787
	Oct	244	9,586	9,830	148	5,303	6,451	3,246	8,697	18,527	255	18,782
	Nov	275	8,927	9,202	364	7,752	8,116	2,321	10,437	19,639	267	19,906
	Dec	267	8,854	8,921	268	6,135	6,403	2,649	9,052	17,973	-	17,973
2010	Jan	3,799	79,341	83,140	7,215	32,614	39,829	21,169	60,998	144,138	2,000	146,138
	Feb	5,313	71,228	76,541	5,330	38,433	43,763	25,459	69,222	145,763	11,000	156,763
	Mar	8,375	96,064	104,439	7,790	39,910	47,700	24,453	72,153	176,592	12,000	188,592
	Apr	3,991	75,051	79,042	4,176	41,326	45,502	19,663	65,165	144,207	7,000	151,207
	May	5,510	57,354	62,864	4,228	30,218	34,446	24,173	58,619	121,483	12,000	133,483
	Jun	5,169	108,107	113,276	5,010	39,701	44,711	28,208	72,919	186,195	13,000	199,195
	Jul	2,272	78,945	81,217	6,446	50,054	56,500	23,879	80,379	161,596	14,000	175,596
	Aug	7,671	97,340	105,011	5,209	52,530	57,739	30,847	88,586	193,597	13,000	206,597
	Sept	4,361	95,928	100,289	7,982	36,378	44,360	29,471	73,831	174,120	12,000	186,120
	Oct	7,019	86,029	93,048	6,886	39,071	45,957	25,279	71,236	164,284	8,000	172,284
	Nov	3,503	87,015	90,518	5,026	35,022	40,048	32,610	72,658	163,176	352	163,528
	Dec	5,656	70,153	70,153	3,949	32,480	36,429	19,422	55,851	131,660	-	131,660

Source: Botswana Railways

2.5.3 Revenue from Rail Goods

Total revenue generated from conveyance of goods rose by 30.3 percent from P179million in 2009 to P233.3 million in 2010(See Table 4.8 in Appendix 5).

Local traffic refers to goods which are moved from one point to another within Botswana. Revenue from this category of goods increased by 43.6 percent from P26,5 million in 2009 to P38.1 million in 2010 (See Table 4.8 in Appendix 5).



2.6. Contribution of The Transport Sector to GDP

In 2001, the contribution of the Transport Sector to GDP at current prices was 3.1 percent. It rose steadily through the years to 4.9 percent in 2009; in 2010 it dropped to 4.5 percent. (Table 2.6a and figure 2.15).

Figure 2.15: Percentage Contribution of Different Sectors to GDP at Current Prices, 2010

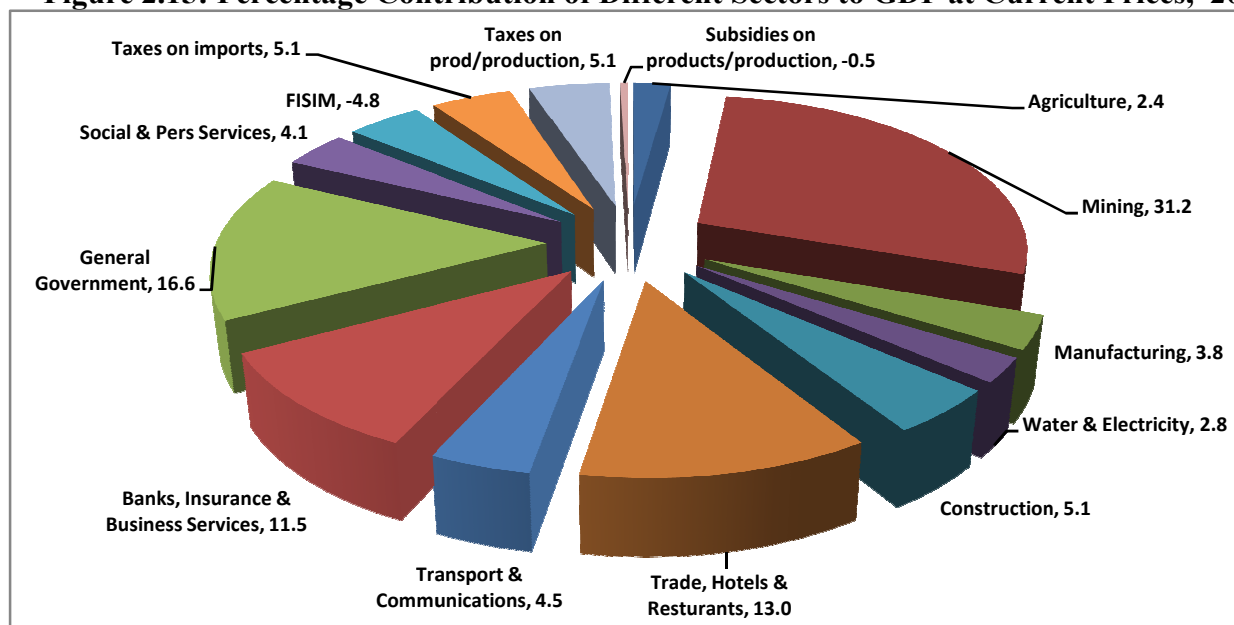


Table 2.6a: Percentage Contribution of the Transport & Communications Sector to GDP at Current Prices

Economic Sector	Years									
	2001	2002	2003	2004	2005	2006	2007	2008	2009	2010
Transport & Comm.	3.1	3.2	3.3	3.3	3.6	3.6	3.6	3.7	4.9	4.5
Others	96.9	96.8	96.7	96.7	96.4	96.4	96.4	96.3	95.1	95.6
Total	100	100	100	100	100	100	100	100	100	100

2.7. Employment in the Transport Sector

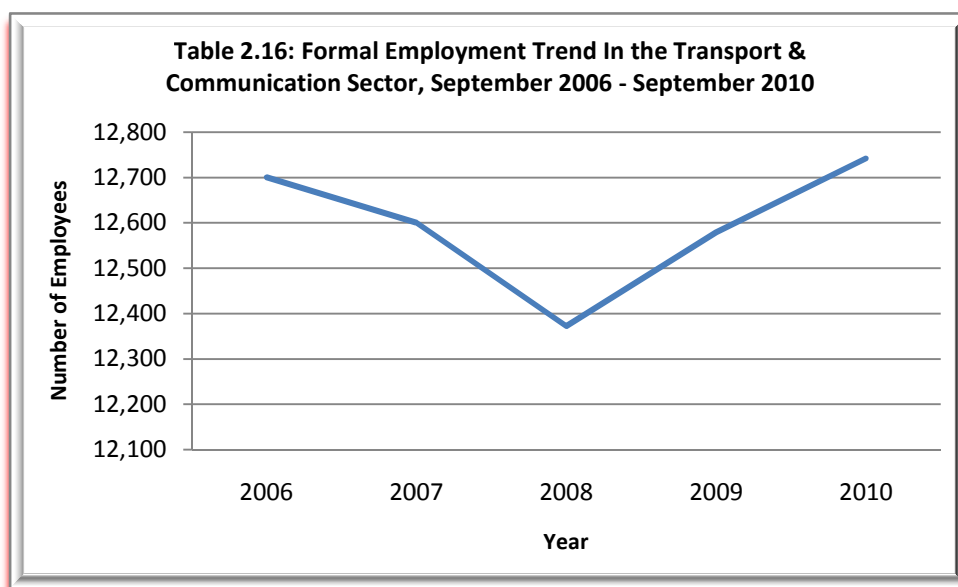
Employment in the Transport and Communications Sector is given for the period March 2006 to December 2010 in Table 2.7a below. In December 2010, the Transport and Communications Sector employed 3.3 percent of the total formal labour force. During September 2010, the number of employed persons in the Transport and Communications Sector as a whole was estimated at 12, 742 employees. This was an increase of 1.3 percent from 12,579 persons who

were employed in September 2009. Compared to September 2006, formal employees increased by only 0.3 percent to 12,742 in September 2010 from 12,700 in September 2006.

Table 2.7a: Number of People Employed in the Formal Transport and Communications Sector by Month and Year

Year	March	June	September	December
2006	13,300	..	12,700	..
2007	12,600	..	12,600	..
2008	12,294	12,195	12,372	..
2009	12,474	12,584	12,579	..
2010	12,668	12,695	12,742	12,808

Source: Labour Statistics Unit



3. COMMUNICATIONS

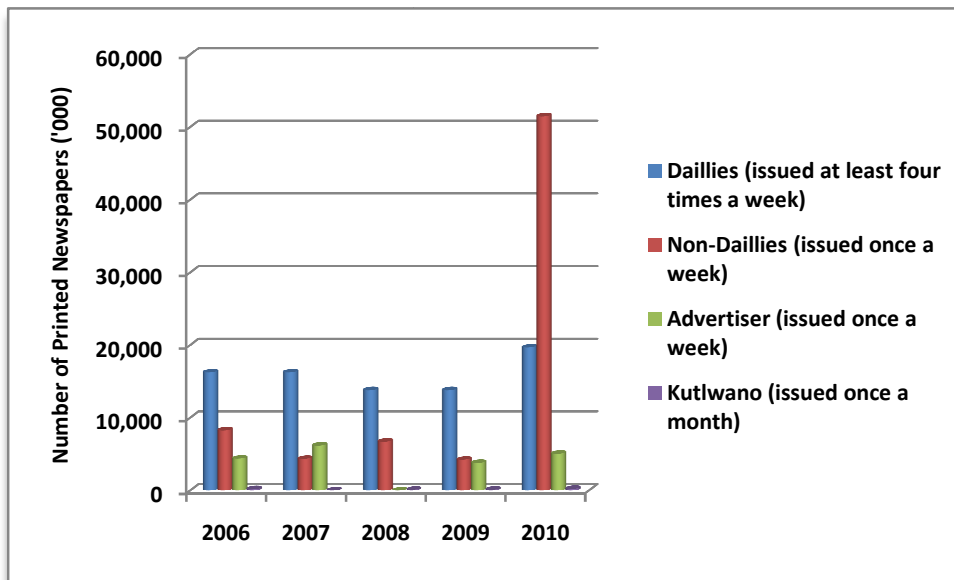
3.1. Print Media

These covers privately and government owned newspapers throughout the country. Print Media is categorized into Dailies (issued at least 4 times a week) and Non Dailies (issued either once a week or once a month).

In overall, there has been a significant increase in the number of newspapers printed in 2010 as compared to previous years. Dailies newspapers show fluctuations from 2006 to 2010, the highest having been recorded in 2010 after a constant decline between 2008 and 2009.

Non dailies and the advertising magazines also show fluctuations. Non dailies recorded the highest responses in 2010 and the least figures in 2007 and 2009. Advertising magazines show the least figures recorded in 2008 (see Table 4.9 in Appendix 6 and figure 3.1 below).

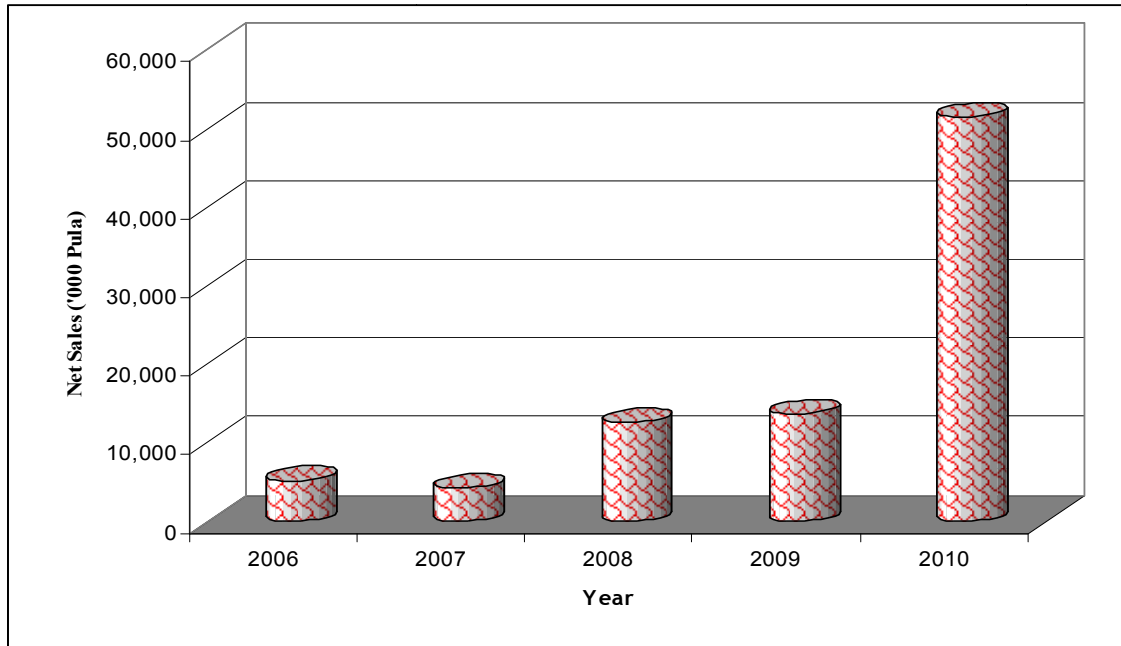
Figure 3.1: The Number of Newspapers Printed by Frequency, 2006 – 2010



Note: Data for 2009 is complete up to third quarter (September 2009)

As indicated by figure 3.2 below and Table 4.11 in Appendix 6, there has been a significant increase in net sales of private newspapers between 2006 and 2010. Net Sales of private newspapers in 2010 amounted P51.4 million in 2010, having increased by more than 200 percent from the amount of P13.6 million recorded in 2009. An increase of 8.3 percent in net sales was recorded between 2008 and 2009 when net sales amounted to P13.6 million in 2009 from the recorded value of P12.6 million in 2008.

Figure 3.2: Private Newspapers Net Sales (Pula), 2006 – 2010



Tables 4.12 and 4.13 in Appendix 6 as well as Figure 3.3 show the usage of computers, usage of intranet, connectivity to internet and connectivity to website among newspaper employees in 2010. These tables indicate that there was a wide usage of ICT.

Figure 3.3: Private Newspapers Employees by Use of ICT Indicators and Month, 2010

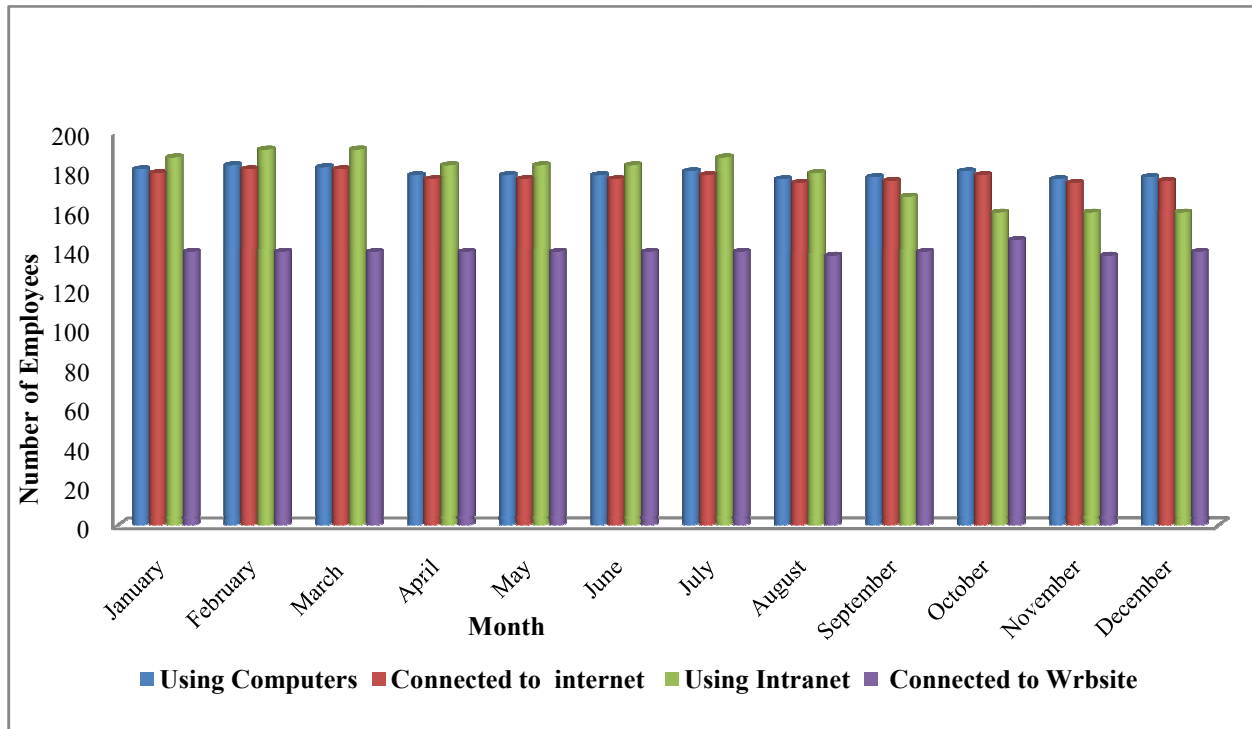


Table 3.1a displays newspaper employees' usage of computers by gender. It shows that the usage of computers is skewed towards males as compared to their female counterparts.

Table 3.1a: Newspaper Employees by Month and Sex, 2009 - 2010

Month	Total Employees				Using Computers			
	2009		2010		2009		2010	
	Male	Female	Male	Female	Male	Female	Male	Female
January	226	228	126	115	191	180	105	76
February	232	228	127	115	193	180	107	76
March	226	232	126	114	193	180	107	75
April	231	232	122	110	197	180	103	75
May	231	233	122	110	197	180	103	75
June	199	235	122	111	197	181	103	75
July	199	219	129	111	203	185	105	75
August	197	219	125	114	204	186	101	75
September	197	220	127	116	203	189	102	75
October	135	125	122	123	116	87	97	83
November	134	126	122	119	116	87	97	79
December	134	125	119	120	117	87	97	80

Source: Private and Govt Newspapers

3.2. BOTSWANA POSTAL SERVICE

3.2.1 Mail Volume Trends

Presented below are mail volume circulated within and outside Botswana

Figure 3.4: Mail Volume Trend, 2006 - 2010

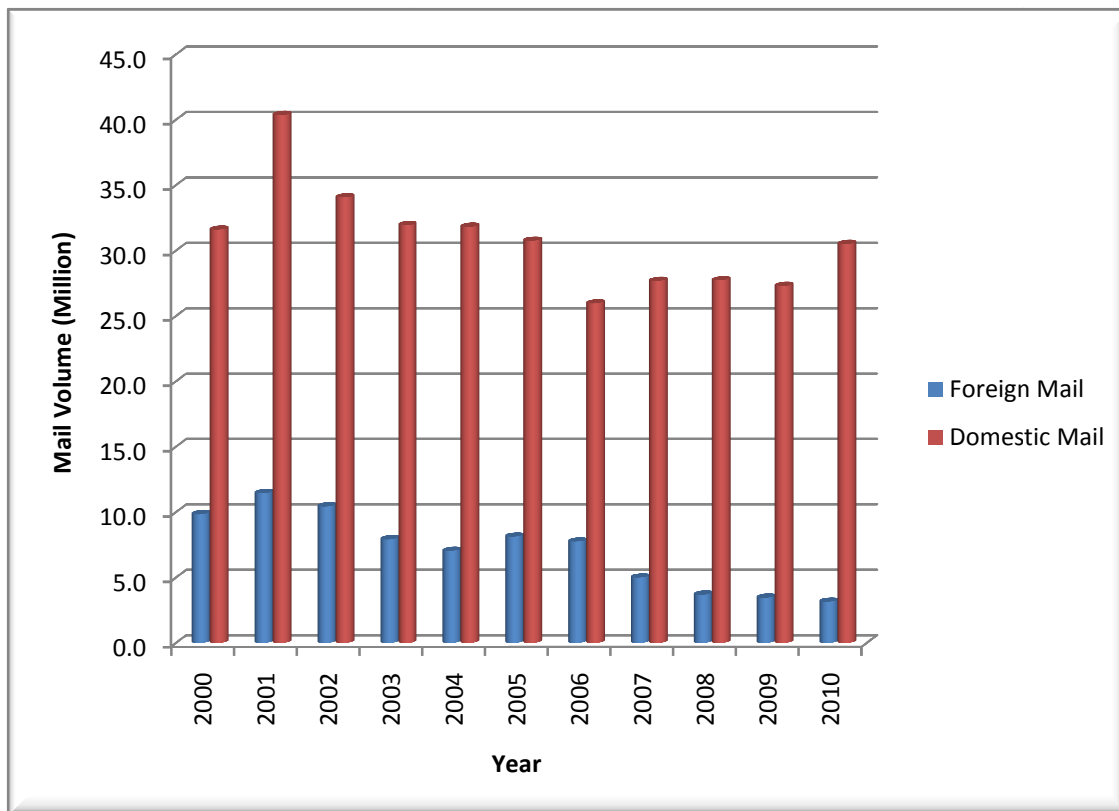


Table 4.14 in Appendix 7 and Figure 3.4 shows that Foreign Mail (dispatched and received) decreased in volume in 2010 to 3.2 million from 3.5 million recorded in 2009. Domestic Mail on the other hand increased in 2010, it rose from 27.3 million recorded in 2009 to 30.5 million in 2010. Prior to 2010, data on foreign posted mail was not available. As indicated in Table 4.14 30 million foreign mails were posted in 2010.

3.2.2 Recorded Items (Priority and Non Priority) – 2010

These include Insured Parcels, Registered Items, and Express Mail Service (EMS) items excluding undelivered and returned to sender or redirected items. Registered Items constitutes 87.8 percent of the mail volume of recorded items followed by Insured Parcels and Express Mail Service Items with 9.8 percent and 2.4 percent respectively (see Table 3.2a).

Table 3.2a : Mail Volume of Recorded Items – 2010

Mail Type	Insured Parcels	Registered Items	EMS	Total	Percentage
Domestic Foreign Dispatched	14,560 13,416	398,166 20,674	- 4,694	412,726 38,784	81.9 7.7
Total	27,976	418,840	4,694	451,510	89.6
Foreign Received	21,239	24,013	7,425	52,677	10.4
Grand Total	49,215	442,853	12,119	504,187	100.0
<i>Percentage</i>	9.8	87.8	2.4	100.0	

Source: Botswana Postal Services

3.2.3 Unrecorded Mail Items (Priority and Non Priority) – 2010

Table 3.2b: Mail Volume of Unrecorded Items - 2010

Mail Type	Letter/cards	Printed Matter	Small Packets	Total	Percentage
Domestic Foreign Dispatched	29,862,077 274,742	235,143 27,920	- 857	30,097,220 303,519	90.2 0.9
Sub Total	30,136,819	263,063	857	30,400,739	91.1
Foreign Received	2,886,700	66,889	16,939	2,970,528	8.9
Grand Total	33,023,519	329,952	17,796	33,371,267	100.0
Percentage	99.0	1.0	0.1	100.0	

Source: Botswana Postal Services

Unrecorded mail items are mails posted without issuing receipts such as letters, cards and small packets among others. Table 3.2b shows unrecorded mail items, with Domestic Unrecorded Mail items constituting 90.2 percent while Foreign Received items contributing 8.9 percent. Items dispatched abroad contributed the least of unrecorded mail items, with 0.9 percent.

The Letters/Cards constitute the highest number of unrecorded mail items, at 99.0 percent of the total. Both printed matter and small packets contributed the least amount of 1.0 percent and 0.1 percent respectively

3.3 RADIO STATION AND TELEVISION

Figure 3.5 indicates that there was a wide usage of computers, intranet, internet and website connectivity among radio and television employees in 2010

Figure 3.5: The Number of Public and Private Radio Station Employees Using Computer and Intranet, Connected to Internet and Website - 2010

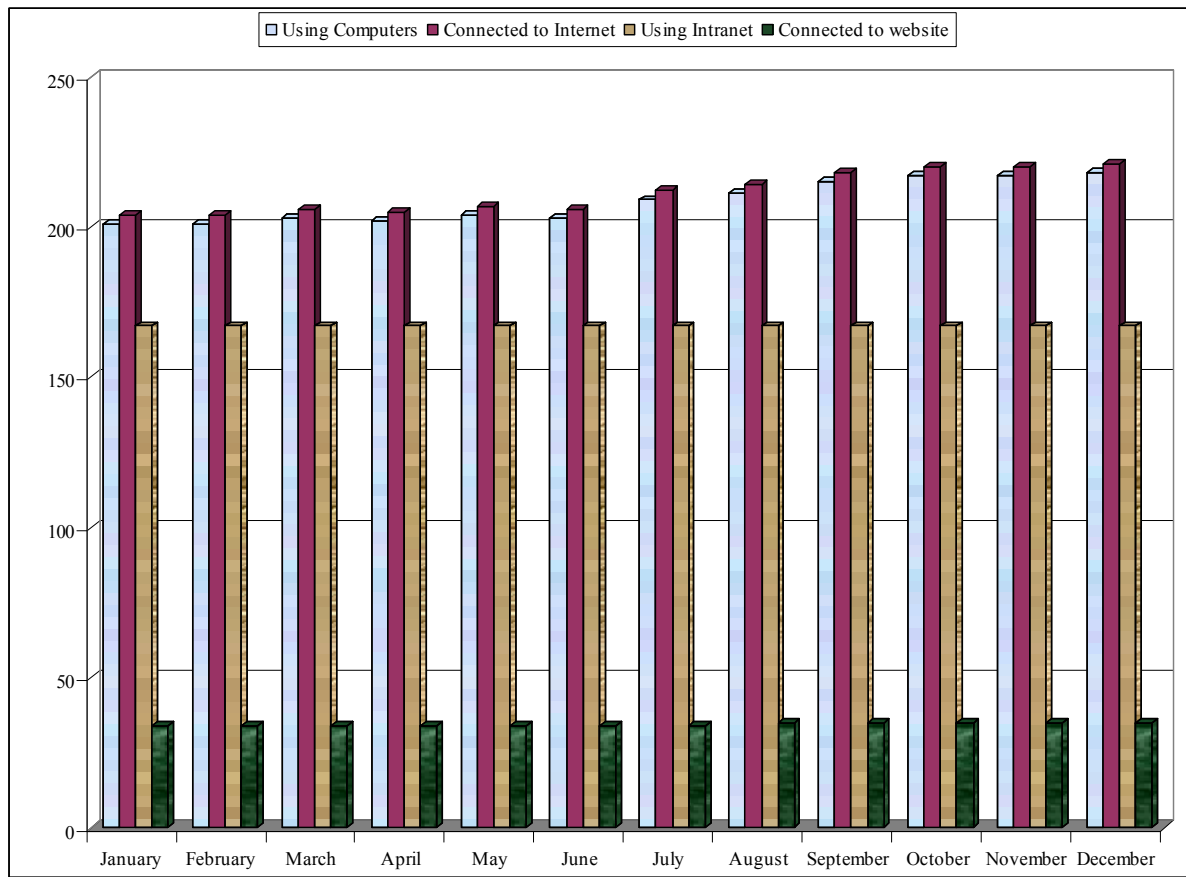


Table 4.22 (Appendix 8) displays private radio weekly broadcasting hours by month. The figures indicate that general programmes are mostly broadcasted followed by English programmes. The least covered in terms of hours are religious programmes.

Table 4.23 (Appendix 8) shows television weekly broadcasting hours by Months of 2010. It shows the same trend as that in radio coverage though with different magnitude. Religious and Commercial /Advertising programmes are the least covered than others.

3.4 OWNERSHIP OF MEDIA DURABLES AND ACCESS TO MEDIA BY HOUSEHOLDS

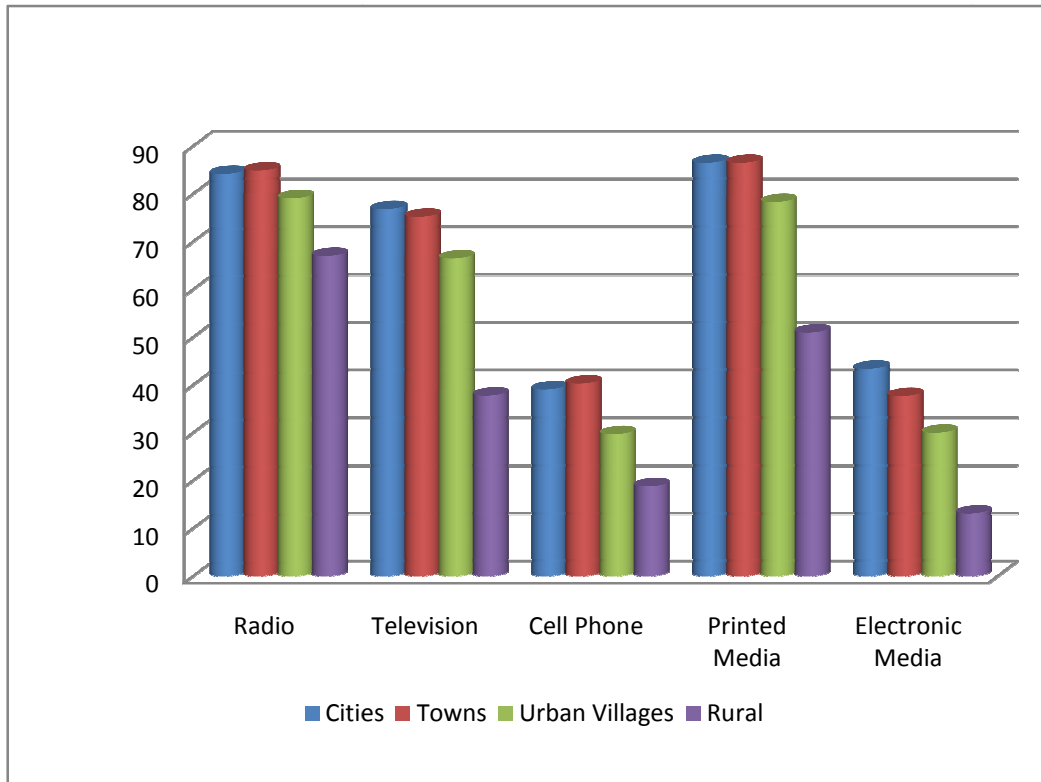
Table 3.4a: Ownership of Media Durables by District and Type (Radio, TV, Computer and Phone), 2001

District	Radio	Television	Computer	Phone	Total
Gaborone	44,540	28,401	7,731	34,137	114,449
Francistown	17,853	8,644	1,262	10,783	38,542
Lobatse	6,392	3,319	412	3,697	13,820
S/ Phikwe	11,128	5,077	528	6,354	23,087
Orapa	2,036	1,785	322	1,694	5,837
Jwaneng	3,458	2,120	394	2,570	8,542
Sowa	771	606	101	602	2,080
Southern	22,987	6,058	470	8,416	37,931
South East	11,147	5,672	929	7,309	25,057
Kweneng	34,501	10,777	1,187	13,728	60,193
Kgatleng	12,513	4,578	411	6,043	23,545
Central	70,067	16,118	1,372	25,105	112,758
North East	7,063	1,722	103	2,810	11,758
North West	19,193	4,585	648	8,255	32,679
Ghanzi	4,274	1,028	120	1,762	7,184
Kgalagadi	5,459	1,223	105	2,203	9,080

In 2001, most of the households which owned media durables were in Gaborone, they constituted 21.7 percent of the total households. Households in Central and Kweneng Districts followed with 21.4 percent and 11.4 percent of the total household respectively. The least number of households which owned media durables was recorded in Orapa; they constituted only 0.4 percent of the total (see Table 3.4a).

As indicated in Table 4.24 (Appendix 9), females headed households owned more media durables at 58.7 percent than male headed households.

Figure 3.6: Percentage Distribution of Household Access to Media by Residence, 2001



In 2001, households in urban areas had more access to media with 57.1 percent. When it comes to residence categorized by cities, towns, urban villages and rural; households which resided in rural areas had more access to media with 42.6 percent, followed by those residing in urban villages with 30.4 percent (see Table 3.4b and figure 3.6).

As indicated by Table 3.4c below, in 2008 households with more access to media resided in Gaborone; they constituted 13.6 percent of the total households with access to media. Households in Central Serowe and Francistown were next with 8.5 percent and 6.2 percent respectively. The district which had the least number of households with access to media was Sowa with 0.2 percent.

Table 3.4b: Percentage Distribution of Households by Access to Media by Residence, 2008

Household Categories	Household Access to Media by Type							Total No. Of Households
	Working Radio	Working Television	Telephone	Cell Phone	Printed Media	Electronic Media	Performing Arts	
Residence								
Urban	81.6	71.1	34.2	91.2	82.2	35.6	35.3	298,787
Rural	67	37.3	18.8	65.6	51	13.1	21.5	224,300
Total	75.3	56.8	27.6	80.3	68.8	26	29.4	523,033
Residence								
Cities	84.2	76.8	39.1	94.1	86.5	43.4	39.4	103,643
Towns	84.9	75.2	40.3	92.7	86.5	37.7	39.8	36,297
Urban Villages	79.1	66.5	39.7	89.1	78.3	30	31.6	158,847
Rural	67	37.8	18.8	65.6	51	13.1	21.5	224,300
Total	75.3	56.8	27.6	80.3	68.8	26	29.4	523,088

Source: BIAS III

Table 3.4c: Percentage Distribution of Households by Access to Media by District, 2008

Household Categories	Household Access to Media by Type							Of Househol
	Working Radio	Television	Telephone	Cell Phone	Printed Media	Electronic Media	Performing Arts	
Gaborone	86.6	78.7	42.5	93.7	88.8	46.4	42.2	70,971
Francistown	79	72.6	31.7	94.3	81.3	36.9	32.8	32,671
Lobatse	81.9	64.3	29.2	88.4	83.4	38.2	37.7	9,380
S/Phikwe	86.3	75.4	35.9	94.2	86.1	29.9	47.6	17,027
Orapa	94.7	100	84.2	98.4	87.5	61.8	39	3,216
Jwaneng	78.1	74.4	41.5	91.9	90.8	42.8	17.6	5,571
Sowa	91.2	96.5	67.2	92.6	95	57	50.9	1,102
Southern	67.5	46.4	26	74.2	63	18.7	18.5	28,535
Barolong	73.9	38.6	21.5	69.6	49.4	12.5	14.9	13,201
Ngwaketse West	49.7	25.2	9.8	70.3	50.6	8.3	11.2	2,829
South East	81.5	76.3	26.6	88.5	81.7	37.3	35.1	20,058
Kweneng East	89.6	60.9	22.6	87.1	74.2	28.8	31	64,932
Kweneng West	54.9	20.1	6.5	52.1	44.7	4.9	3.7	13,031
Kgatleng	77.8	62.8	33	84.5	69.8	21.9	35.1	20,264
Central Serowe	71.1	45.5	21.9	70.6	60.6	17.3	26	44,556
Central Mahalapye	70.8	47.9	34.9	74.1	62.3	18.9	36.5	30,610
Central Bobonong	73.9	50	33.2	71.3	59.8	15.8	23.3	18,642
Central Boteti	68.5	35.5	11.2	69.5	48.9	9.5	13.8	11,464
Central Tutume	66.6	46.7	20.5	71.7	54	17.7	30.6	34,800
North East	75.8	57.7	24.4	85.1	71	23.5	32.6	15,278
Ngamiland South	77.8	55.6	23.5	79	58.9	18.5	18.2	19,674
Ngamiland North	55.4	25.3	13	54.7	35.7	5.1	15.7	13,467
Chobe	83.5	69.1	48.3	87.8	78.6	40.2	32	6,828
Ghanzi	67	33.5	7	62.1	53.9	13.7	18.9	11,188
Kgalagadi South	65.9	44.4	22.7	78.9	67.4	21.8	11.7	7,672
Kgalagadi North	52.6	24.7	4.3	46.2	45	17.3	13.8	6,120
Total	75.3	56.8	27.4	80.3	68.8	26	29.4	523,087

Source: BIAS III

APPENDIX 1: AVERAGE DAILY VEHICLE TRAFFIC: 2001 - 2010

Table 4.1 AVERAGE DAILY VEHICLE TRAFFIC BY PLACE: 2001 - 2010

Station	Place	Section of Road	2001	2002	2003	2004	2005	2006	2007	2008	2009	2010
N1	Ramokgwebana	Moroka	200	122	..	213	..	226	..	266
		Francitown	929	..	772
		Ramokgwebana	481	336	876	542	624	499	..	761
		Tshesebe	618	451	..	679	..	572	..	965
		Mapoka	227	..	1,080
N2	Sebina Turn Off	Francistown Side	1,448	631	1,122	1,454	1,169	1,204	1,645	1,497
		Nata Side	1,014	429	720	869	744	692	1,069	949
		Sebina Side	1,007	477	858	1,074	717	949	1,371	965
N3	Sowa Junction	Nata Side	525	293	511	500	424	399	529	516
		Sowa Town	232	131	214	236	190	173	288	306
		Sebina Turn Off	677	361	581	637	572	505	730	680
N4	Orapa Fork	Orapa Side	977	785	868	926	835	837	1,107
		Francistown Side	2,680	2,200	2,404	2,474	2,365	1,938	2,757
		Sebina Junction	1,820	1,416	1,599	2,079	1,681	1,606	1,935
N5	Selebi-Phikwe Turn Off	Francistown Side	1,781	1,933	1,995	..	1,241	1,612	1,753	2,104
		Selebi Phikwe	948	967	1,080	..	704	741	995	1,047

Source: Roads Department

Table 4.1 AVERAGE DAILY VEHICLE TRAFFIC BY PLACE: 2001 - 2010 (Cont'd)

Station	Place	Section of Road	2001	2002	2003	2004	2005	2006	2007	2008	2009	2010
N6	Pandamatenga Turn Off	Kazungula	213	154	275	308	297	532	459	182
		Nata	216	157	267	401	323	348	505	320
		Pandamatenga	44	33	92	132	92	95	162
N7	Bobonong Turn Off (Dikabeya)	Palapye Side	2,032	2,064	2,179	2,195	1,981	1,525	1,364	2,294
		Sefhophe	..	1,796	518	541	447	462	472	574
		Serule	1,718	477	1,983	1,925	1,715	1274	1,110	2013
N8	Morupule Turn Off	Palapye Side	843	1,026	1,030	1,011	1,176	1161	1436	1504
		Serowe Side	831	1,012	794	951	1,108	1072	1300	1547
N9	Martin's Drift Turn Off	Mahalapye side	2,013	1,783	2,006	2,125	1,658	1318	1780	2524
		Palapye side	2,591	2,383	3,128	2,928	2,374	2325	2443	3441
		Martin's Drift	738	747	1,332	945	738	1125	960	1091

Source: Roads Department

Table 4.1 AVERAGE DAILY VEHICLE TRAFFIC BY PLACE: 2001 - 2010 (Cont'd)

Station	Place	Section of Road	2001	2002	2003	2004	2005	2006	2007	2008	2009	2010
N10	Sherwood Ranch	Palapye Side	490	445	394	423	589	408	519	549
		Zanzibar Side	35
		Martin's drift	455	468	409	419	601	461	548	608
		Machaneng Side	25	117	103	124	197	151	139	179		
N11A	Sefhophe Bridge	Sefhophe Side	630
		Selebi-Phikwe Side	1,059	1,322	1,285	1,032	997	1,098	1,097	1,234
		Bobonong side	..	710	696	651	699	554	560	713
N11B	Sefhophe South	Sefhophe/S-Phikwe	635	669	576	639	489	740
		Martin's drift	447	598	513	499	361	477	342	487
		Tsetsebye	120	176	157	211	158	198	212	109
N12	Martin's Drift Turn Off	Nata/Pandamatenga	261	110	492	842
		Kasane Side	346	171	677	1,249	707	..	1,054
		Zambia Border Post	86	67	244	401	424	..	965
		Zimbabwe Border Post	148	58	319	508	347	160		
N13	Shoshong West	Shoshong	87	136	135	114	153	146	166
		Mosolotshane	87	149	149	125	187	154	214
		Kolobeng	214	214	79

Source: Roads Department

Table 4.1 AVERAGE DAILY VEHICLE TRAFFIC BY PLACE: 2001 - 2010 (Cont'd)

Station	Place	Section of Road	2001	2002	2003	2004	2005	2006	2007	2008	2009	2010
N14	Machaneng Gate	Makawate Side	25	27	39	29	136	43	60
		Sherwood Side	121	129	191	175	201	264	411
N15	Shoshong	Shoshong	43	85	75	82	90	86	111	136
		Lephephe	43	78	..	81	..	101	107	139
		Kodibeleng	75	..	88
N16	Mahalapye East (Shakwe)	Machaneng side	206	230	270	236	258	262	289	317
		Makwate Side	46	56	82	74	123	103	94	71
		Mahalapye Side	254	288	343	303	345	356	389	317
N17	Mahalapye South (Capricorn)	Mahalapye	1,483	1,644	1,380	1,349	2,268	1,418	2,334	1,897
		Dibete	1,558	1,505	1,392	1,344	1,682	1,425	2,264	1,876
		Buffels drift	30	30	29	16	43	24	46	25

Source: Roads Department

Table 4.1**AVERAGE DAILY VEHICLE TRAFFIC BY PLACE: 2001 - 2010 (Cont'd)**

Station	Place	Section of Road	2001	2002	2003	2004	2005	2006	2007	2008	2009	2010
N18	Mahalapye West	Shoshong	231	282	275	292	313	297	364	323
		Mahalapye	232	282	267	286	401	311	386	310
N19	Kalamare Road	Maahlapye	68	78	81	75	80	91	90	98
		Kalamare	68	73	76	71	84	92	86	100
N20	Mmashoro	Serowe	198	197	231	210	259	205	276	243
		Orapa	174	183	228	192	252	187	262	240
N21	Maun East (Nata)	Gweta	348	288	328	425	325	254	332	214
		Maun	329	303	336	421	334	263	337	206
N22	Gweta Turn Off	Gweta	194	290
		Nata	287	276	277	..	301	136	154	62
		Maun	279	246	212	216	249	210	144	73
N23	Shorobe	Moremi	50	55	53	64	53	51	47	54
		Maun	48	49	42	..	52	48	50	51
		Shorobe	38	68

Source: Roads Department

Table 4.1. AVERAGE DAILY VEHICLE TRAFFIC BY PLACE: 2001 - 2010 (Cont'd)

Station	Place	Section of Road	2001	2002	2003	2004	2005	2006	2007	2008	2009	2010
N24	Tshesebe	Ramokgwebana	700	407	813	871	629	425	882	546
		Molambakwena	163	155	..	333	..	140	192	116
		Francistown	795	617	919	998	743	521	979	490
		Mosojane	162
N25	Matlapeng Turn Off	Shorobe Side	140	184	280	198	243	172	141	196
		Maun Side	146	174	277	173	242	164	146	199
N26	Gumare	Tsau	191	182	..	225	27	210	193
		Gumare	303	237
		Shakawe	278	227	209	256	..	207	178
		Sehitwa	178	..	244
N27	Serowe west	Serowe	..	219	432	218	236	212	278
		Mogorosi	201	..	22	227	221	229	202	240
N30	Tati Siding	Francistown	72	46	91	..	2,133	1,507	2,049
		Tonota	141	100	181	..	2,101	1,559	2,092
S1	Kanye South	Kanye Side	674	722	702	758	860	1,278	1,567	1,157
		Ranaka	147
		Lobatse Side	738	717	793	792	882	1,457	1,669	1,184

Source: Roads Department

Table 4.1

AVERAGE DAILY VEHICLE TRAFFIC BY PLACE: 2001 - 2010 (Cont'd)

Station	Place	Section of Road	2001	2002	2003	2004	2005	2006	2007	2008	2009	2010
S2	Lobatse South	Kanye Side	1,914	1,875	1,683	1,875
		Ramatlabama	..	941	1,038	941
		Lobatse Side	3,007	2,735	2,989	2,735
S3	Kanye North (Ranaka Junction)	Moshupa Side	1,254	1,019	1,074	1,243	1,474	1,160	1,581	1,050
		Kanye Side	1,277	1,098	1,207	1,300	1,248	992	1,528	1,010
		Ranaka Side	146	107	158	127	..	198	238
S4	Moshaneng Turn Off	Kanye Side	905	998	832	966	850	1,515	1,653	1,221
		Moshaneng Side	161	140	141	169	152	133	132	142
		Jwaneng Side	833	880	830	847	780	1,228	1,548	1,135
S5	Good hope (East)	Goodhope Side	239	437	284	611	700	797
		Kgoro	61	78	104	82
		Pitsane	244	552	639	684
S5	Pitsane Station	Goodhope Side	496	427
		Pitsane	431	346
		Kgoro	109	156
S6	Ramatlabama Border	Ramatlabama	221	323	448	497	145	448	576	301
		Metlojane	116	167	486	620	256	547	694	576
		Pitsane	269	319	258	378	193	264	351	288

Source: Roads Department

Table 4.1

AVERAGE DAILY VEHICLE TRAFFIC BY PLACE: 2001 - 2010 (Cont'd)

Station	Place	Section of Road	2001	2002	2003	2004	2005	2006	2007	2008	2009	2010
S7	Gabane Junction	Gaborone	1,914	1,875	1,683	1,875
		Gabane	..	941	1,038	941
		Ranaka	3,007	2,735	2,989	2,735
		Moshupa										
S8	Tlokweng	Border	1,254	1,019	1,074	1,243	1,474	1,160	1,581	1,050
	Border	Gaborone	1,277	1,098	1,207	1,300	1,248	992	1,528	1,010
S9	Mogobane Turn Off	Lobatse Side	905	998	832	966	850	1,515	1,653	1,221
		Gaborone Side	161	140	141	169	152	133	132	142
		Mogobane Side	833	880	830	847	780	1,228	1,548	1,135
S10	Pioneer Border	Pioneer Gate	404	545	600	456	381	448	317	256
		Lobatse	359	359	359	532	405	477	360	255
S11	Boatle	Gaborone Side	3,491	4,304	3,705	3,822	3,830	4,764	5,411	3,877
		Ramotswa Side	1,949	2,451	2,937	2,404	2,098	2,630	3,614	1,866
		Thamaga Side	173	330	300	354	320	530	664	318
S12	Jwaneng East	Kanye	..	747	725	724
		Moshaneng	626
		Jwaneng	613	762	699	698

Source: Roads Department

Table 4.1 AVERAGE DAILY VEHICLE TRAFFIC BY PLACE: 2001 - 2010 (Cont'd)

Station	Place	Section of Road	2001	2002	2003	2004	2005	2006	2007	2008	2009	2010
S13	Modipane	Mabalane	104	126	98	64
		Modipane	116	132	103	68
		Gaborone	3,497
S14	Lentsweletau	Molepolole	77	74	89	101	98
		Lentsweletau	82	220	341	354	415
		Gaborone	179	302	304	351
S14	Lentsweletau	Kopong	180
		Molepolole	82
		Lentsweletau	251
S15	Thebe Phatshwa	Letlhakeng	235	264	315	297	268	380	385	318
		Molepolole	232	266	315	286	289	488	490	331
S16	Rasesa North	Capricorn	1,193	1,318	1,177	1,319	1,106	1,209	1,266	1,352
		Gaborone	1,112	1,260	1,117	1,225	1,117	1,150	1,252	1,332
S17	Mabalane	Modipane	..	102	94	354	324
		Mabalane	240	274	283	..	306
		Mochudi	201	192	216	..	298	312	334	336
		Mramashia	96

Source: Roads Department

Table 4.1 AVERAGE DAILY VEHICLE TRAFFIC BY PLACE: 2001 - 2010 (t

Station	Place	Section of Road	2001	2002	2003	2004	2005	2006	2007
S18	Gakutlo	Gaborone side	2,247	1,336	1,738	1,875	1,739	2,064	1,826
		Molepolole side	1,703	1,307	1,753	1,822	1,805	2,013	1,775
		Kopong side	720	720
S19	Metlojane	Ramatlabama Rd	119	110	132	118	151	244	251
		Pitsane	272
		Mmathethe	102	102	116	188	285	431	565
		Phitshane Moloopo	230	200	242	144	186	188	225
		Good Hope Road	..	252
S20	Lehututu Junction	Hukuntsi	226	256	309	359	188	273	528
		Kang	90	108	127	118	71	99	..
		Tshane	110	150	175	140	87	110	322
		Lehututu	164	176	199	198	116	211	278
S21	Jwaneng West	Jwaneng Road	254	322	359	329	339	368	545
		Morwamosu	284
		Sekoma	..	333	337	368	344	400	550

Source: Roads Department

Table 4.1 AVERAGE DAILY VEHICLE TRAFFIC BY PLACE: 2001 - 2010 (continued)

Station	Place	Section of Road	2001	2002	2003	2004	2005	2006	2007	2008	2009	2010
S22	Kang Fork	Gantsi side	185	207	198	213	199	164	336	263
		Kang	148	..	139	..	112
		Tshane side	98	102	..	114	91	109	168
		Morwamosu	120	167	147	192	207	171	460
S23	Mmrathethe fork	Mmrathethe	67	100	104	105	102	95	112
		Lobatse side	..	97	101	113	107	97	115
S24	Morwamosu	Kang side	266	..	290	157	192	161	384	190
		Motokwe side	30	..	45	44	23	29	51	32
		Sekoma side	260	..	281	145	179	161	377	189
S25	Khakhea	Sekoma	123	..	85	85	69	156
		Werda	105	..	71	66	67	180
		Morwamosu	15	..	19	16	29	34
S26	Molepolole S.	Molepolole	302	378	437	457	404	506	496	480
		Thamaga	301	375	449	436	438	489	452	499
S27	Molepolole N.	Lephephe	212	..	286	..	276	336	310	266
		Molepolole	199	..	269	276	257	310	301	264

Source: Roads Department

Table 4.1 AVERAGE DAILY VEHICLE TRAFFIC BY PLACE: 2001 - 2010 (continued)

Station	Place	Section of Road	2001	2002	2003	2004	2005	2006	2007	2008	2009	2010
W1	Toteng	Sehitwa side	206	268	124
		Maun side	220	304	246 1/4
W2	Tsau	Gumare side	194
		Tsau side
		Sehitwa side	212
W2	Sepopa	Sehitwa	170	..	173	73	107	133
		Shakawe	156	79	89	121
W3	D' Kar	Gantsi side	73	..	132	106	111	112	212	160
		Sehitwa	85	..	142	90	94	103	171	121
W4	Gantsi South	Gantsi Side	158	..	206	..	168	305	390	406
W6	Charleshill	Kang Side	154	..	204	..	195	310	377	376
		Ncojane side
		Mamuno side	123	151	175	171	..	118	95	143
		Kalkfontein	126	162	209	190	..	150	132	203
W7	Kalkfontein	Charleshill Side	132	..	151	129	129	156	159
		Gantsi	64	161	178
		KM44	138	..	133	127	121	126
W8	Charleshill South	Ncojane	64	..	61	..	59	73	73	75
		Charleshill Side	63	..	55	..	61	81	65	71
W9	Mohenbo	Shakawe	231	..	261	92	111	75
		Nambia	108	53	58	58
		Mohenbo	158	..	121

Source: Roads Department

APPENDIX 2: MOTOR VEHICLE REGISTRATIONS

Table 4.2: Privately Owned Vehicles- Renewals by Type of Vehicle Registration and Registration Station, 2010

Station	Passenger		Trucks	Mini		Motor		Tankers &		Others	Total
	Cars	LDVs		Buses	Buses	Cycles	Tractors	Trailers	Horses		
Bobonong	996	1,158	109	66	7	13	59	123	3	6	2,540
Francistown	8,818	5,097	1,604	637	111	37	203	1,574	450	173	18,704
Gaborone	68,912	29,749	7,650	4,799	460	625	1,091	5,882	1,299	1,190	121,657
Gantsi	1,649	2,138	273	72	15	15	42	269	37	49	4,559
Gumare	647	803	66	24			7	29	1	14	1,591
Hukuntsi	202	287	14	12		1	6	14		2	538
Jwaneng	2,707	2,346	240	197	23	19	143	216	11	31	5,933
Kang	154	235	48	13	1		7	17	4	8	487
Kanye	3,296	2,971	306	317	30	8	249	222	12	17	7,428
Kasane	1,723	1,220	201	134	10	7	137	267	27	28	3,754
Letlhakane	2,306	2,237	332	187	51	12	77	196	14	35	5,447
Letlhakeng	201	351	20	14	1	-	45	11			643
Lobatse	6,747	3,131	861	508	37	28	332	619	118	86	12,467
Mahalapye	2,815	2,705	359	208	16	11	206	308	32	20	6,680
Masunga	728	597	94	41	26	1	32	14	5	7	1,545
Maun	5,744	4,770	650	315	36	68	112	798	37	71	12,601
Mochudi	3,897	3,206	464	337	27	11	368	597	14	85	9,006
Mogoditshane	10,523	3,916	1,333	1,006	26	40	83	494	40	75	17,536
Molepolole	3,954	3,353	333	334	7	11	227	245	8	25	8,497
Orapa	995	733	57	56		5	15	54	1	6	1,922
Palapye	4,326	3,214	727	278	35	37	159	511	110	63	9,460
Ramotswa	2,975	1,767	332	277	17	30	76	176	26	65	5,741
Selebi-Phikwe	6,495	4,418	868	421	85	45	228	796	96	91	13,543
Serowe	3,185	3,095	407	285	10	18	225	318	23	13	7,579
Sowa	826	735	83	39	10	1	28	70	13	28	1,833
Tati- Town	6,741	4,509	715	429	39	14	112	627	84	56	13,326
Tsabong	844	1,445	83	35	3	4	11	80	7	28	2,540
Tutume	1,525	1,761	250	138	4	10	88	136	3	30	3,945
Total	153,931	91,947	18,479	11,179	1,087	1,071	4,368	14,663	2,475	2,302	301,502

Source: Department of Road Transport and Safety

Table 4.3: Privately Owned Vehicles- First Registrations by Type and Make , 2010

	Cars	LDVs	Trucks	Mini Buses	Buses	Motor Cycles	Tractors	Trailers	Tankers/ Horses	Others	Total	Total 2009
Audi	382	-	-	-	-	-	-	-	-	-	382	399
BWM	741	-	-	-	-	12	-	-	-	-	753	717
Chevro	208	44	-	1	-	-	-	-	-	-	253	193
Chrysler	29	1	-	2	-	-	-	-	-	-	32	32
Colt	-	-	-	-	-	-	-	-	-	-	-	4
Daewoo	2	-	-	-	-	-	-	-	-	-	2	11
Dat/Nisan	945	605	404	72	10	-	-	-	-	-	2,036	2,805
Ford	370	188	4	3	1	-	152	-	-	-	718	978
Hino	0	2	114	1	7	-	-	-	-	1	125	137
Honda	865	-	4	1	-	45	-	-	-	-	915	821
Hyndai	239	4	32	2	-	-	-	-	-	4	281	390
Isuzu	18	448	42	4	7	-	-	-	8	-	527	846
Jeep	110	1	-	-	-	-	-	-	-	-	111	109
Kia	257	28	2	1	2	-	-	-	-	-	290	406
Land Rover	205	84	-	-	-	-	-	-	-	-	289	285
MAN	-	-	35	-	1	-	-	-	20	-	56	104
Mass Ferg	-	-	-	-	-	-	243	-	-	-	243	272
Mazda	1,281	114	174	197	2	-	-	-	-	-	1,768	1,663
M/Benz	670	7	100	37	10	-	-	-	18	-	842	884
Mitsubi	1,106	48	80	19	6	-	-	-	-	-	1,259	1,088
Opel	209	86	-	2	-	-	-	-	-	-	297	361
Peugeot	87	4	-	5	-	-	-	-	-	-	96	158
Renault	9	-	2	-	-	-	-	-	7	-	18	49
Toyota	10,838	2,019	1,065	600	19	-	-	-	2	5	14,548	13,385
Volkswagen	1,451	15	3	17	5	-	-	-	-	-	1,491	1,728
Volvo	223	-	26	-	6	-	14	-	37	3	309	394
Yamaha	-	-	-	-	-	-	-	-	-	-	-	87
Other	547	342	494	22	22	192	262	1,825	267	335	4,308	5,019
Total	20,792	4,040	2,581	986	98	249	671	1,825	359	348	31,949	33,325

Source: Department of Road Transport and Safety

APPENDIX 3: MOTOR VEHICLE ACCIDENT TREND

Table 4.4: Motor Vehicle Accidents - Trend in Accidents, 2000 – 2010

Year	Number of Accidents	Number of Casualties	Number of Fatalities	Number of Registered Vehicles	Estimated Population ('000s)	Accidents per '000 vehicles	Accident per 10,000 population	Casualties per '000 vehicles	Fatalities per 10,000 vehicles	Casualties per 10,000 population	Fatalities per 100,000 population
2000	16,313	7,790	529	139,322	1,651	117	99	56	38	47	32
2001	17,125	7,945	526	150,574	1,622	114	102	53	35	47	31
2002	18,610	8,014	520	162,807	1,650	114	110	49	32	47	31
2003	18,328	7,963	557	173,828	1,673	105	108	46	32	47	33
2004	18,136	7,840	532	189,265	1,693	96	106	41	28	46	31
2005	17,522	7,069	450	200,064	1,708	88	101	35	23	41	26
2006	17,035	6,952	429	211,532	1,720	81	98	33	20	40	25
2007	19,487	7,639	497	230,063	1,737	85	111	33	22	43	28
2008	20,415	8,160	455	256,498	1,755	80	115	32	18	46	26
2009	20,000	7,970	475	280,639	1,776	71.3	113	28.4	16.2	45	27
2010	18,978	6,430	397	344,719	1,800	56.9	105.4	18.6	11.5	35.7	22.1

Source: Botswana Police Service (Road Traffic Accident Statistics Office)

APPENDIX 4: AIRCRAFT AND PASSENGER MOVEMENT

Table 4.5: CIVIL AVIATION: AIRCRAFT MOVEMENTS BY TYPE OF FLIGHT: 2003 - 2010

Airport	Year	International Movements				Domestic Movements				Total Movements			Grand Total	
		Schedule	Non-Schedule	Private	Total	Schedule	Non-Schedule	Private	Total	Schedule	Non-Schedule	Private		
Francistown	2003	-	341	538	879	709	520	934	2,163	709	861	1,472	3,042	
	2004	2	375	604	981	873	616	1,516	3,005	875	991	2,120	3,986	
	2005	-	598	430	1,028	893	809	1,094	2,796	893	1,407	1,524	3,824	
	2006	94	759	488	1,341	1,084	789	1,164	3,037	1,178	1,548	1,652	4,378	
	2007	191	973	447	1,611	946	793	1,170	2,909	1,137	1,766	1,617	4,520	
	2008	51	1,344	547	1,942	942	869	1,085	2,896	993	2,213	1,632	4,838	
	2009	7	1,394	412	1,813	956	1,102	1,211	3,269	963	2,496	1,623	5,082	
	2010	142	710	350	1,202	951	746	1,284	2,981	1,093	1,456	1,634	4,183	
	Gaborone	2003	7,110	1,268	2,060	10,438	1,745	1,557	3,291	6,593	8,855	2,825	5,361	17,041
		2004	7,088	1,068	1,957	10,113	1,810	1,556	3,112	6,478	8,898	2,624	5,069	16,591
2005		8,332	1,108	1,923	11,363	1,885	1,491	2,854	6,230	10,217	2,599	4,777	17,593	
2006		8,287	1,044	1,998	11,329	1,950	1,490	2,991	6,431	10,237	2,534	4,989	17,760	
2007		7,426	1,257	2,677	11,360	1,991	1,415	3,971	7,377	9,417	2,672	6,648	18,737	
2008		6,559	1,414	1,396	9,369	2,126	1,872	2,481	6,479	8,685	3,286	3,877	15,848	
2009		6,707	1,479	1,321	9,507	2,154	1,803	2,380	6,337	8,861	3,282	3,701	15,844	
2010		7,846	756	1,456	10,058	2,134	989	3,430	6,553	9,980	1,745	4,886	16,611	
Gantsi		2003	-	18	13	31	-	274	116	390	-	292	129	421
		2004	-	23	25	48	-	265	148	413	-	288	173	461
	2005	-	17	5	22	-	328	111	439	-	345	116	461	
	2006	-	11	14	25	-	280	57	337	-	291	71	362	
	2007	-	21	19	40	-	198	86	284	-	219	105	324	
	2008	-	12	15	27	77	169	103	349	77	181	118	376	
	2009	-	3	20	23	56	172	167	395	56	175	187	418	
	2010	-	-	7	7	-	172	116	288	-	172	123	295	
	Kasane	2003	70	1,718	156	2,682	508	4,623	933	6,820	557	6,341	1,089	9,502
		2004	21	2,439	222	2,848	669	5,336	815	7,720	690	7,775	1,037	10,568
2005		129	2,606	113	3,515	528	6,520	672	8,408	657	9,126	785	11,923	
2006		138	3,170	207	3,396	546	7,293	569	9,524	684	10,463	776	12,920	
2007		38	3,188	170	3,693	497	8,432	595	9,375	535	11,620	765	13,068	
2008		1	3,557	135	3,693	319	8,447	609	9,375	320	12,004	744	13,068	
2009		3	3,678	98	3,779	310	8,738	594	9,642	313	12,416	692	13,421	
2010		178	2,787	95	3,060	552	6,538	661	7,751	730	9,325	756	10,811	

Source : Botswana Civil Aviation Authority

Table 4.5 CIVIL AVIATION: AIRCRAFT MOVEMENTS BY TYPE OF FLIGHT: 2003 - 2010 (cont'd)

Airport	Year	International Movements				Domestic Movements				Total Movements			Grand Total
		Schedule	Non-Schedule	Private	Total	Schedule	Non-Schedule	Private	Total	Schedule	Non-Schedule	Private	
Maun	2003	1,232	1,953	20	3,205	1,159	25,258	1,232	27,649	2,391	27,211	1,252	30,854
	2004	1,555	1,796	1	3,352	1,110	29,711	1,003	31,824	2,665	31,507	1,004	35,176
	2005	1,657	2,184	115	3,956	1,211	31,641	966	33,818	2,868	33,825	1,081	37,774
	2,006	1,554	2,278	24	3,856	1,078	33,652	844	35,574	2,632	35,930	868	39,430
	2007	1,673	2,487	20	4,180	1,014	36,179	408	37,601	2,687	38,666	428	41,781
	2008	1,663	2,239	12	3,914	1,202	36,955	637	38,794	2,865	39,194	649	42,708
	2009	2,171	2,329	22	4,522	1,155	63,784	511	65,450	3,326	66,113	533	69,972
	2010	1,619	1,586	16	3,221	18,806	19,054	896	38,756	20,425	20,640	912	41,977
Selebi-	2003	-	45	258	303	-	93	336	429	-	138	594	732
Phikwe	2004	-	47	215	262	-	68	397	465	-	115	612	727
	2005	-	51	174	225	-	53	307	360	-	104	481	585
	2006	-	89	121	210	-	63	186	249	-	152	307	459
	2007	-	55	179	234	-	43	219	262	-	98	398	496
	2008	-	55	137	192	2	132	225	359	2	187	362	551
	2009	-	7	219	226	-	24	404	428	-	31	623	654
	2010	21	22	134	177	20	83	296	399	41	105	430	576
	Grand Total	2003	8,343	5,903	3,086	17,332	4,511	33,124	7,159	44,794	12,854	39,027	10,245
	2004	10,016	6,172	2,687	18,875	4,416	38,927	6,131	49,474	14,432	45,099	8,818	68,349
	2005	10,176	7,219	2,996	20,391	4,791	41,546	6,054	52,391	14,967	48,765	9,050	72,782
	2006	9,209	7,806	3,458	20,473	4,512	44,553	6,852	55,917	13,721	52,359	10,310	76,390
	2007	8,284	8,869	2,292	19,445	4,478	47,579	4,905	56,962	12,762	56,448	7,197	76,407
	2008	8,274	8,564	2,329	19,167	4,645	48,339	5,383	58,367	12,919	56,903	7,712	77,534
	2009	10,337	6,589	2,149	19,075	4,792	72,253	6,406	83,451	15,129	78,842	8,555	102,526
	2010	9,806	5,861	2,058	17,725	22,463	27,582	6,683	56,728	32,269	33,443	8,741	74,453

Source : Botswana Civil Aviation Authority

Table 4.6 CIVIL AVIATION: INTERNATIONAL AND DOMESTIC TRAFFIC: 2003 - 2010

Airport	Year	International Traffic					Domestic Traffic					Total International & Domestic Passengers
		No. of Movements	Number of Passengers				No. of Movement	Number of Passengers				
			Arrivals	Depart's	Transit	Total		Arrivals	Depart's	Transit	Total	
Francistown	2003	981	1,517	1,663	..	3,180	3,005	13,550	13,066	..	26,616	29,796
	2004	1,028	2,064	2,374	..	4,438	2,796	15,693	14,916	..	30,609	35,047
	2005	1,341	2,419	2,618	..	5,037	3,037	14,180	13,357	..	27,537	32,574
	2006	1,611	3,201	3,469	..	6,670	2,909	13,725	12,848	..	26,573	33,243
	2,007	1,942	5,020	4,898	..	9,818	2,896	16,558	16,286	..	32,844	42,762
	2,008	1,813	4,694	4,419	..	9,113	3,269	17,844	17,042	..	34,886	43,999
	2009	1,202	3,904	3,915	..	7,819	2,981	22,282	21,410	..	43,692	51,511
2010	1,065	4,439	4,547	..	8,986	3,037	23,096	22,686	..	45,782	54,768	
Gaborone	2003	10,113	98,198	98,676	..	196,874	6,478	36,225	36,921	..	73,146	270,020
	2004	11,363	105,283	105,853	..	211,136	6,230	39,713	39,615	..	79,328	290,464
	2005	11,329	109,994	108,036	..	218,030	6,431	38,160	39,701	..	77,861	295,891
	2006	11,360	104,608	106,626	..	211,234	7,377	39,132	39,184	..	78,316	289,550
	2,007	9,369	113,786	114,427	..	228,213	6,479	43,559	42,897	..	86,456	314,669
	2,008	9,507	122,416	121,659	..	244,075	7,377	39,132	39,184	..	89,314	333,389
	2,009	10,058	143,061	143,878	..	286,939	6,553	48,937	50,176	..	99,113	386,052
2,010	10,182	162,318	164,187	..	326,505	16,951	53,239	52,402	..	105,641	432,146	
Gantsi	2003	48	41	36	..	77	413	680	699	..	1,379	1,456
	2004	22	15	27	..	42	439	691	785	..	1,476	1,518
	2005	25	17	32	..	49	337	402	548	..	950	999
	2006	40	78	65	..	143	284	465	510	..	973	1,116
	2007	27	21	34	..	55	349	668	659	..	1,327	1,382
	2,008	23	14	8	..	22	395	650	538	..	1,188	1,210
	2009	7	11	12	..	23	288	295	386	..	681	704
2010	27	55	24	..	79	327	228	265	..	493	572	
Kasane	2003	2,682	3,545	4,664	..	8,209	6,820	16,628	16,000	..	32,628	40,837
	2004	2,848	5,265	5,882	..	11,147	7,720	18,832	18,227	..	37,059	48,206
	2005	3,515	6,317	5,703	..	12,020	8,408	20,212	19,994	..	40,206	52,226
	2006	3,396	5,165	5,097	..	10,262	9,524	24,332	23,391	..	47,723	27,985
	2007	3,693	4,516	5,833	..	10,349	9,375	23,896	23,075	..	46,971	57,320
	2008	1,944	3,307	4,046	..	11,161	6,064	16,070	15,108	..	53,220	64,381

Table 4.6 CIVIL AVIATION: INTERNATIONAL AND DOMESTIC TRAFFIC: 2003 - 2010 (Cont'd)

Airport	Year	International Traffic					Domestic Traffic					Total
		No. of Movements	Number of Passengers				No. of Movements	Number of Passengers				Total
			Arrivals	Depart's	Transit	Total		Arrivals	Depart's	Transit	Total	
Maun	2003	3,205	17,596	18,274	..	35,870	27,649	51,651	50,768	..	102,419	138,289
	2004	3,352	21,997	20,924	..	42,921	31,824	56,436	56,686	..	113,112	156,043
	2005	3,956	28,955	28,157	..	57,112	33,818	55,818	55,904	..	111,722	168,834
	2006	3,856	29,141	27,808	..	56,949	35,574	63,452	63,179	..	126,631	183,580
	2,007	4,180	31,401	30,075	..	61,476	37,601	65,180	65,272	..	130,452	191,928
	2,008	3,914	26,659	25,253	..	51,912	38,794	74,537	74,561	..	149,098	201,010
	2,009	4,522	40,650	40,784	..	81,434	65,450	95,281	95,264	..	190,545	271,979
	2,010	3,221	22,577	21,757	..	44,334	38,756	83,894	83,633	..	167,527	211,861
Selebi Phikw	2003	303	395	395	..	790	429	765	787	..	1,552	2,342
	2004	262	440	536	..	976	465	724	706	..	1,430	2,406
	2005	225	346	348	..	694	360	522	610	..	1,132	1,826
	2006	210	405	368	..	773	249	395	416	..	811	1,584
	2,007	424	343	397	..	740	262	448	466	..	914	1,654
	2,008	192	308	310	..	618	359	600	615	..	1,215	1,833
	2,009	226	330	349	..	679	428	1,363	991	..	2,354	3,033
	2,010	177	293	290	..	583	399	1,423	1,182	..	2,605	3,188
Total	2003	17,291	121,337	123,849	..	245,186	44,830	119,458	118,160	..	237,618	482,804
Grand	2004	18,838	134,970	135,408	..	270,378	49,369	131,887	130,839	..	262,726	533,104
Total	2005	20,391	148,048	144,894	..	292,942	52,391	129,294	130,114	..	259,408	552,350
	2006	20,473	110,178	112,091	..	222,269	17,150	63,859	62,991	..	126,850	349,119
	2007	19,635	155,087	155,664	..	310,751	56,962	150,309	148,655	..	298,964	609,715
	2008	19,228	159,074	157,827	..	316,901	58,796	165,249	163,672	..	328,921	645,822
	2009	19,075	192,903	195,787	..	388,690	83,451	192,193	191,303	..	383,496	772,186
	2010	18,243	197,689	199,830	..	397,519	69,009	189,727	187,525	..	377,252	774,771

Source: Botswana Civil Aviation Authority

Table 4.7 CIVIL AVIATION : PASSENGER MOVEMENT BY TYPE OF FLIGHT : 2003 - 2010

Airport	Year	Arrivals				Departures				Transit				All Passengers			
		Sched.	Sched. Non-	Private	Total	Sched.	Sched. Non-	Private	Total	Sched.	Sched. Non-	Private	Total	Sched.	Sched. Non-	Private	Total
Francistown	2003	10,702	2,199	2,166	15,067	10,558	2,090	2,081	14,729	21,260	4,289	4,247	29,796
	2004	13,064	3,150	1,543	17,757	12,605	2,980	1,705	17,290	25,669	6,130	3,248	35,047
	2005	12,243	2,915	1,441	16,599	11,877	2,594	1,504	15,975	24,120	5,509	2,945	32,574
	2006	12,649	3,123	1,154	16,926	12,391	2,907	1,019	16,317	25,040	6,030	2,173	33,243
	2007	14,649	5,431	1,498	21,578	14,146	5,258	1,780	21,184	28,795	10,689	3,278	42,762
	2008	15,492	5,705	1,341	22,538	14,831	5,246	1,384	21,461	30,323	10,951	2,725	43,999
	2009	18,418	3,669	4,099	26,186	17,828	3,358	4,139	25,325	36,246	7,027	8,238	51,511
	2010	20,382	2,686	4,467	27,535	19,857	2,442	4,934	27,233	40,239	5,128	9,401	54,768
Gaborone	2003	115,552	7,458	11,413	134,423	117,147	7,332	11,118	135,597	232,699	14,790	22,531	270,020
	2004	128,589	6,782	9,625	144,996	130,318	6,129	9,021	145,468	258,907	12,911	18,646	290,464
	2005	129,200	7,458	11,496	148,154	129,683	7,290	10,764	147,737	258,883	14,748	22,260	295,891
	2006	127,742	7,154	8,844	143,740	130,164	7,007	8,639	145,810	257,906	14,161	17,483	289,550
	2007	141,111	7,794	8,440	157,345	141,764	7,696	7,864	157,324	282,875	15,490	16,304	314,669
	2008	150,124	9,065	7,949	166,938	150,214	8,454	7,785	166,451	300,538	17,519	15,552	333,389
	2009	174,590	5,262	12,146	191,998	177,267	5,205	11,582	194,054	351,857	10,467	23,728	386,052
	2010	190,116	19,609	5,832	215,557	191,165	20,056	5,368	216,589	381,281	39,665	11,200	432,146
Gantsi	2003	-	484	237	721	-	483	252	735	-	967	489	1,456
	2004	-	521	185	706	-	593	219	812	-	1,114	404	1,518
	2005	-	326	93	419	-	511	69	580	-	837	162	999
	2006	-	426	115	541	-	449	126	575	-	875	241	1,116
	2007	176	392	121	689	-	165	135	693	341	785	256	1,382
	2008	123	255	286	664	127	287	132	546	250	542	418	1,210
	2009	-	192	114	306	-	278	120	398	-	470	234	704
	2010	-	199	84	283	-	219	70	289	-	418	154	572
Kasane	2003	5,412	13,464	1,297	20,173	5,155	14,291	1,218	20,664	10,567	27,755	2,515	40,837
	2004	5,780	17,455	862	24,097	5,540	17,564	1,005	24,109	11,320	35,019	1,867	48,206
	2005	5,422	20,295	812	26,529	5,332	19,407	958	25,697	10,754	39,702	1,770	52,226
	2006	5,397	23,424	676	29,497	5,409	22,263	816	28,488	10,806	45,687	1,492	57,985
	2007	4,376	23,325	711	28,412	4,572	23,583	753	28,908	8,948	46,908	1,464	57,320
	2008	5,256	26,150	673	32,079	5,356	26,198	748	32,302	10,612	52,348	1,421	64,381
	2009	9,301	17,947	1,734	28,982	9,611	18,641	1,673	29,925	18,912	36,588	3,407	58,907
	2010	13,557	19,999	2,298	35,854	13,694	20,097	2,591	36,382	27,251	40,096	4,889	72,236

Source: Botswana Civil Aviation Authority

Table 4.7 CIVIL AVIATION: PASSENGER MOVEMENT BY TYPE OF FLIGHT : 2003 - 2010 (Cont'd)

Airport	Year	Arrivals				Departures				Transit				All Passengers			
		Sched.	Sched. Non-	Private	Total	Sched.	Sched. Non-	Private	Total	Sched.	Sched. Non-	Private	Total	Sched.	Sched. Non-	Private	Total
Maun	2003	31,690	35,710	1,847	69,247	31,925	35,242	1,875	69,042	63,615	70,952	3,722	138,289
	2004	37,044	39,910	1,479	78,433	35,774	40,412	1,424	77,610	72,818	80,322	2,903	156,043
	2005	39,725	42,900	2,148	84,773	36,032	45,412	2,617	84,061	75,757	88,312	4,765	168,834
	2006	41,801	49,597	1,195	92,593	40,443	49,299	1,245	90,987	82,244	98,896	2,440	183,580
	2007	42,825	53,149	607	96,581	42,272	52,548	527	95,347	85,097	105,697	1,134	191,928
	2008	45,304	54,879	1,013	101,196	44,427	54,589	798	99,814	89,731	109,468	1,811	201,010
	2009	56,822	78,463	646	135,931	56,600	78,819	629	136,048	113,422	157,282	1,275	271,979
	2010	46,999	57,214	2,258	106,471	46,990	56,270	2,130	105,390	93,989	113,484	4,388	211,861
Phikwe	2003	-	395	765	1,160	-	407	775	1,182	-	802	1,540	2,342
	2004	-	343	821	1,164	-	322	920	1,242	-	665	1,741	2,406
	2005	-	209	659	868	-	185	773	958	-	394	1,432	1,826
	2006	-	426	374	800	-	349	435	784	-	775	809	1,584
	2,007	-	181	610	791	-	164	699	863	-	345	1,309	1,654
	2008	-	385	523	908	-	346	579	925	-	731	1,102	1,833
	2009	-	75	1,618	1,693	-	84	1,256	1,340	-	159	2,874	3,033
	2010	-	150	1,566	1,716	-	151	1,321	1,472	-	301	2,887	3,188
Total	2003	163,356	59,710	17,725	240,791	164,785	59,845	17,319	241,949	328,141	119,555	35,044	482,740
	2004	184,477	68,161	14,515	267,153	184,237	68,000	14,294	266,531	368,714	136,161	28,809	533,684
	2005	186,590	74,103	16,649	277,342	182,924	75,399	16,685	275,008	369,514	149,502	33,334	552,350
	2006	18,046	27,399	2,319	47,764	17,800	25,968	2,396	46,164	35,846	53,367	4,715	93,928
	2007	203,137	90,272	11,987	305,396	202,754	89,414	11,758	304,319	406,056	179,914	23,745	609,715
	2008	216,299	96,439	11,585	324,323	214,955	95,120	11,424	321,499	431,254	191,559	23,009	645,822
	2009	259,131	105,608	20,357	385,096	261,306	106,385	19,399	387,090	520,437	211,993	39,756	772,186
	2010	271,054	99,857	16,505	387,416	271,706	99,235	16,414	387,355	542,760	199,092	32,919	774,771

Source: Botswana Civil Aviation Authority

APPENDIX 5: RAILWAYS

Table 4.8: Revenue from Goods Traffic ('000 Pula), 2002 – 2010

	Imports			Exports			Local Traffic	Botswana Origin	Botswana Total	Transit Traffic	Total Traffic	
	From North	From South	Total Imports	To North	To South	Total Exports						
2002	5,494	28,036	33,530	8,739	34,826	43,565	27,736	71,301	106,272	16,974	123,246	
2003	6,075	38,088	44,163	6,841	30,323	37,164	21,401	58,565	102,698	17,170	119,898	
2004	6,117	44,509	50,626	7,149	36,245	43,394	19,678	63,072	113,698	5,139	118,837	
2005	6,269	40,125	46,394	8,818	48,230	57,048	26,628	83,676	130,070	16,719	146,789	
2006	6,501	53,120	59,621	10,120	81,670	91,790	77,708	169,498	234,269	271,563	505,832	
2007	6,971	19,329	26,300	6,858	59,782	66,640	39,896	106,536	132,836	179	133,015	
2008	4,891	68,517	73,408	4,568	69,181	73,749	35,624	109,373	182,781	22,351	205,132	
2009	2,660	84,920	87,580	3,033	59,498	62,531	26,529	89,060	176,640	2,377	179,017	
2010	3,507	99,093	102,600	8,815	72,358	81,173	38,106	119,279	221,879	11,400	233,279	
2009	Jan	507	7,259	7,766	388	6,151	6,539	2,330	8,869	16,635	604	17,239
	Feb	296	7,023	7,319	286	5,928	6,214	1,706	7,920	15,239	833	16,072
	Mar	316	9,405	9,721	474	7,909	8,383	2,299	10,682	20,403	602	21,005
	Apr	218	7,161	7,379	256	5,758	6,014	2,595	8,609	15,988	75	16,063
	May	378	9,250	9,628	408	5,186	5,594	2,755	8,349	17,977	-	17,977
	Jun	248	7,923	8,171	322	5,361	5,683	2,725	8,408	16,579	197	16,776
	Jul	146	7,023	7,169	207	5,329	5,536	2,569	8,105	15,274	296	15,570
	Aug	295	7,928	8,223	426	4,499	4,925	2,609	7,534	15,757	421	16,178
	Sept	273	9,063	9,336	160	6,299	6,426	2,761	9,187	18,523	264	18,787
	Oct	244	9,586	9,830	148	5,303	5,451	3,246	8,697	18,527	255	18,782
	Nov	275	8,927	9,202	364	7,752	8,116	2,321	10,437	19,639	267	19,966
	Dec	267	8,654	8,921	268	6,135	6,403	2,649	9,052	17,937	-	17,973
2010	Jan	189	7,952	8,141	864	4,936	5,800	2,453	8,253	16,394	271	16,665
	Feb	321	7,667	7,988	723	6,042	6,765	2,775	9,540	17,528	475	18,003
	Mar	402	9,514	9,916	930	6,454	7,384	3,064	10,448	20,364	484	20,848
	Apr	227	7,117	7,344	525	6,289	6,814	2,583	9,397	16,741	871	17,612
	May	275	5,356	5,631	493	4,701	5,194	3,210	8,404	14,035	351	14,386
	Jun	290	10,512	10,802	640	5,673	6,313	3,715	10,028	20,830	1,489	22,319
	Jul	147	7,843	7,990	856	7,254	8,110	3,219	11,329	19,319	1,489	20,808
	Aug	430	10,038	10,468	658	8,336	8,994	3,754	12,748	23,216	1,885	25,101
	Sept	256	9,128	9,384	1,044	5,562	6,606	3,139	9,745	19,129	2,106	21,235
	Oct	435	8,958	9,393	878	6,270	7,148	3,346	10,494	19,887	1,930	21,817
	Nov	184	8,315	8,499	644	5,575	6,219	4,180	10,399	18,898	45	18,943
	Dec	351	6,693	7,044	560	5,266	5,826	2,668	8,494	15,538	4	15,542

Source: Botswana Railways

APPENDIX 6 : MEDIA

Table 4.9 Media: Number of Newspapers Printed by Frequency (Private & Govt. Owned): 2006 - 2010

Frequency	2006	2007	2008	2009	2010
Dailies (issued at least 4 times a week)	16,250,000	16,250,000	13,790,000	13,790,000	19,680,000
Non Dailies (issued once a week)	8,263,276	4,349,810	6,728,144	4,237,500	51,469,854
Kutlwano (issued once a month)	180,000	10,000	120,000	120,000	225,000
The Advertiser (issued once a week)	4,380,000	6,171,000	..	3,780,000	5,040,000
Total	29,073,276	26,780,810	20,638,144	21,927,500	76,414,854

Source: Private and Government Newspapers

Table 4.10 Media : Number of Newspapers Printed (Privately Owned): 2006 - 2010

Months	2006	2007	2008	2009	2010
January	572,434	340,720	461,391	632,517	418,973
February	694,802	357,677	604,447	801,715	498,455
March	787,541	392,175	534,186	802,539	567,707
April	663,814	357,036	584,023	852,783	617,902
May	724,504	365,211	568,159	851,490	604,632
June	676,516	427,459	558,389	808,970	608,058
July	658,407	376,658	554,682	913,116	625,864
August	754,851	483,463	617,680	827,198	589,192
September	713,158	397,410	575,578	838,034	633,606
October	703,419	577,447	634,043	835,735	557,581
November	738,119	434,445	570,150	745,706	588,202
December	575,711	319,182	465,416	627,595	555,102
Total	8,263,276	4,828,883	6,728,144	9,537,398	6,865,274

Source: Private and Government Newspapers

Table 4.11: Private Newspapers (Net Sales in Pula), 2006 - 2010

Month	2006	2007	2008	2009	2010
January	392,453	306,431	710,140	1,028,788	3,186,647
February	441,645	312,205	975,323	1,175,741	3,571,801
March	497,758	346,141	987,664	1,203,103	4,100,713
April	407,146	316,287	1,070,427	1,261,137	4,345,546
May	463,419	357,987	1,091,130	1,276,410	4,436,465
June	394,671	378,947	1,045,520	1,357,492	4,997,284
July	411,179	321,626	1,178,626	1,292,613	4,446,676
August	469,901	420,546	1,243,599	1,436,136	4,863,301
September	455,736	342,162	1,114,352	1,402,042	5,229,182
October	439,286	523,206	1,214,594	835,735	4,118,812
November	458,258	376,393	1,084,030	745,706	4,442,403
December	372,941	280,038	878,247	627,595	3,731,024
Total	5,204,393	4,281,969	12,593,652	13,642,498	51,469,854

Table 4.12: Newspaper Employees by Month and Sex, 2009 - 2010

Month	Total Employees				Using Computers			
	2009		2010		2009		2010	
	Male	Female	Male	Female	Male	Female	Male	Female
January	226	228	126	115	191	180	105	76
February	232	228	127	115	193	180	107	76
March	226	232	126	114	193	180	107	75
April	231	232	122	110	197	180	103	75
May	231	233	122	110	197	180	103	75
June	199	235	122	111	197	181	103	75
July	199	219	129	111	203	185	105	75
August	197	219	125	114	204	186	101	75
September	197	220	127	116	203	189	102	75
October	135	125	122	123	116	87	97	83
November	134	126	122	119	116	87	97	79
December	134	125	119	120	117	87	97	80

Source: Private and Govt Newspapers

Table 4.13: Newspaper Employees by Month and Sex, 2009 - 2010

Connected to Internet				Using Intranet				Connected to Website			
2009		2010		2009		2010		2009		2010	
Male	Female	Male	Female	Male	Female	Male	Female	Male	Female	Male	Female
179	133	105	74	159	152	95	92	144	122	71	68
181	133	107	74	161	152	97	94	146	122	71	68
181	133	107	199	161	152	97	94	146	122	71	68
185	133	103	73	165	152	93	90	150	122	71	68
185	131	103	73	165	150	93	90	150	120	71	68
187	134	103	73	163	153	93	90	148	123	71	68
191	138	105	73	135	157	95	92	152	127	71	68
192	139	101	73	168	157	91	88	152	127	71	66
191	144	102	73	167	161	92	75	154	131	71	68
116	87	97	81	95	62	87	72	110	84	69	76
116	87	97	77	95	62	87	72	110	84	65	72
117	87	97	78	95	62	87	72	111	84	66	73

Source: Private and Government Newspapers

APPENDIX 7: BOTSWANA POSTAL SERVICES

Table 4.14: Mail Volume Trend 2000 - 2010

Year	Foreign			Domestic Mail	Population (0000)	Foreign			Domestic Mail per 10000 Population
	Received	Dispatched	Posted mail			Mail Received per 10000 Population	Mail Dispatched per 10000 Population	Posted Mail per 10000 Population	
2000	6,927,076	2,921,873	-	31,607,144	1,651	42	18	-	191
2001	6,252,008	5,208,753	-	40,370,418	1,622	39	32	-	249
2002	8,161,863	2,283,159	-	34,078,710	1,650	49	14	-	206
2003	5,356,990	2,574,866	-	31,954,748	1,673	32	15	-	191
2004	4,745,254	2,304,065	-	31,821,527	1,693	28	14	-	188
2005	6,461,033	1,676,768	-	30,758,411	1,708	38	10	-	180
2006	5,854,772	1,904,340	-	25,972,807	1,720	34	11	-	151
2007	4,097,365	916,865	-	27,693,000	1,736	24	5	-	160
2008	3,057,191	639,752	-	27,739,494	1,755	24	4	-	319
2009	3,081,746	390,854	-	27,306,396	1,776	17	2	-	153
2010	2,702,019	462,679	30,831,436	30,509,946	1,800	15	3	171	169

Source: Botswana Postal Services

Table 4.15 : Recorded Mail Items (priority and Non Priority) - 2010

	2009					2010				
	Quarter 1	Quarter 2	Quarter 3	Quarter 4	Total	Quarter 1	Quarter 2	Quarter 3	Quarter 4	Total
Parcels										
Posted	4,137	6,483	11,078	4,775	26,473	5,217	4,456	3,569	4,168	17,410
Domestic	3,725	4,988	9,289	3,311	21,313	3,382	4,028	3,220	3,930	14,560
Foreign dispatched	412	1,495	1,789	1,464	5,160	1,989	3,760	3,277	4,390	13,416
Received from Abroad	3,378	2,898	7,304	2,789	16,369	1,835	6,357	8,160	4,887	21,239
Sub Total	11,652	15,864	29,460	12,339	69,315	12,423	18,601	18,226	17,375	66,625
Registered Items										
Posted	85,374	105,478	95,742	106,073	392,667	104,310	94,147	98,456	125,226	422,139
Domestic	74,154	100,547	90,568	100,274	365,543	99,701	87,790	90,296	120,379	398,166
Foreign dispatched	11,220	4,931	5,174	5,799	27,124	5,029	5,146	5,282	5,217	20,674
Received from Abroad	5,613	6,600	5,728	5,803	23,744	4,609	6,357	8,160	4,887	24,013
Sub Total	176,361	217,556	197,212	217,949	809,078	213,649	193,440	202,194	255,709	864,992
EMS										
Dispatched Abroad	1,895	1,638	1,991	2,497	8,021	2,183	2,081	2,325	836	7,425
Domestic	-	-	-	-	-	-	-	-	-	-
Received from Abroad	1,026	80	156	186	1,448	1,437	1,360	1,438	459	4,694
Sub Total	2,921	1,718	2,683	2,683	9,469	3,620	3,441	3,763	1,295	12,119
Grand Total	190,934	235,138	229,355	232,971	887,862	229,692	215,482	224,183	274,379	943,736

Source: Botswana Postal Services

Table 4.16 : Unrecorded Mail Items (Priority and non Priority) - 2010

Letter/Cards	2009					2010				
	Quarter 1	Quarter 2	Quarter 3	Quarter 4	Total	Quarter 1	Quarter 2	Quarter 3	Quarter 4	Total
Posted	6,404,570	6,513,618	8,093,866	6,738,370	27,750,424	6,761,665	7,837,596	7,706,050	7,831,508	30,136,819
Domestic	6,295,126	202,590	129,500	121,782	6,748,998	6,665,689	7,762,871	7,659,494	7,774,023	29,862,077
Foreign Dispatched	109,444	6,311,028	7,964,366	6,616,596	21,001,434	95,976	46,556	57,845	180,848	381,225
Foreign Received	730,131	605,440	715,903	825,790	2,877,264	644,582	829,335	656,277	449,113	2,579,307
Total	13539271	13632676	16903635	14302538	58,378,120	14,167,912	16,476,358	16,079,666	16,235,492	62,959,428
Printed Matter										
Posted	43,083	50,845	71,787	74,690	240,405	63,149	82,020	56,913	51,981	254,063
Domestic	38,946	3,845	5,971	9,183	57,945	54,929	75,426	59,909	44,879	235,143
Foreign Dispatched	4,137	47,000	65,816	65,507	182,460	8,220	6,594	6,004	7,102	27,920
Foreign Received	27,313	23,458	21,511	44,565	116,847	15,114	18,050	15,301	18,524	66,989
Total	113,479	125,148	165,085	193,945	597,657	141,412	182,090	138,127	122,486	584,115
Small Packets										
Posted	451	500	537	1,168	2,656	410	126	203	226	555
Foreign Dispatched	451	500	537	1,055	2,543	402	126	103	226	455
Foreign Received	4529	8376	3107	6,305	22,317	4,319	3,738	4,076	4,806	12,620
Total	5,431	9,376	4,181	8,528	27,516	5,131	3,990	4,382	5,258	13,630
Grand Total	13,658,181	13,767,200	17,072,901	14,505,011	59,003,293	14,314,455	16,662,438	16,222,175	16,363,236	63,557,173

Source: Botswana Postal Services

Table 4.17 : Recorded Mail Items (Priority and non Priority) - 2010

	Quarter 1	Quarter 2	Quarter 3	Quarter 4	Total
Parcels					
Posted	5,217	4,456	3,569	4,168	17,410
Domestic	3,382	4,028	3,220	3,930	14,560
Foreign dispatched	1,989	3,760	3,277	4,390	13,416
Received from					
Abroad	1,835	6,357	8,160	4,887	21,239
Sub Total	12,423	18,601	18,226	17,375	66,625
Registered Items					
Posted	104,310	94,147	98,456	125,266	422,179
Domestic	99,701	87,790	90,296	120,379	398,166
Foreign dispatched	5,029	5,146	5,282	5,217	20,674
Received from					
Abroad	4,609	6,357	8,160	4,887	24,013
Sub Total	213,649	193,440	202,194	255,749	865,032
EMS					
Posted	-	-	-	-	-
Dispatched Abroad	1,437	1,360	1,438	459	4,694
Domestic	-	-	-	-	-
Received from					
Abroad	2,183	2,081	2,335	836	7,435
Sub Total	3,620	3,441	3,773	1,295	12,129
Grand Total	229,692	215,482	224,193	274,419	943,786

Source: Botswana Postal Services

Table 4.18: Recorded Mail Items (Priority and non Priority) - 2010

	Quarter 1	Quarter 2	Quarter 3	Quarter 4	Total
Parcels					
Posted	5,217	4,456	3,569	4,168	17,410
Domestic	3,382	4,028	3,220	3,930	14,560
Foreign dispatched	1,989	3,760	3,277	4,390	13,416
Received from Abroad	1,835	6,357	8,160	4,887	21,239
Sub Total	12,423	18,601	18,226	17,375	66,625
Registered Items					
Posted	104,310	94,147	98,456	125,266	422,179
Domestic	99,701	87,790	90,296	120,379	398,166
Foreign dispatched	5,029	5,146	5,282	5,217	20,674
Received from Abroad	4,609	6,357	8,160	4,887	24,013
Sub Total	213,649	193,440	202,194	255,749	865,032
EMS					
Posted	-	-	-	-	-
Dispatched Abroad	1,437	1,360	1,438	459	4,694
Domestic	-	-	-	-	-
Received from Abroad	2,183	2,081	2,335	836	7,435
Sub Total	3,620	3,441	3,773	1,295	12,129
Grand Total	229,692	215,482	224,193	274,419	943,786

Source: Botswana Postal Services

Table 4.19 : Revenue from Botswana Postal Services by Quarter (2010)

	Q1	Q2	Q3	Q4	TOTAL
ESM Income	20,492,966	640,542	739,313	190,697	22,063,518
EMS Income Domestic	528,292	210,303	551,971	222,528	1,513,093
EMS Income International	21,021,258	850,845	1,291,284	413,225	23,576,611
Bag Rental Income	970,225	525,077	389,875	260,257	2,145,434
Sale of Stamps	1,336,852	1,187,917	1,338,803	457,939	4,321,510
Boxes and Key sold	196,973	130,913	113,599	35,311	476,796
Boxes Rental Income	3,646,093	4,127,310	3,681,097	472,976	11,927,476
Hybrid Mail	780,589	729,623	785,085	19,512	2,314,810
Bulk Posted	4,733,798	6,083,275	9,645,265	3,390,303	23,852,641
Franking Machine	352,033	334,487	607,140	240,913	1,534,573
Bag Rental Penalty	1,439,096	284,748	67,760,558	14,706	69,499,108
Government mail	6,054,475	1,979,509	2,840,191	907,635	11,781,810
Philatelic sales	233,276	431,166	440,695	141,526	1,246,662
Money order comm	2,641,159	2,641,159	2,655,640	937,224	8,875,183
Money fax	-	643,197	658,097	833,861	2,135,155
Postal order Comm	-	37,820	70,109	66,372	174,301
Western Union comm	-	760,931	711,432	1,290,131	2,762,494
Other comm.	-	13,035	13,167	17,564	43,766
Daily News	-	3,049,674	3,049,674	3,049,674	9,149,022
GRAND TOTAL	64,427,085	20,156,873	92,840,516	7,704,750	185,129,224

Source: Botswana Postal Services

Table 4.20 Unrecorded Mail Items (Priority and non Priority) - 2010

	Quarter 1	Quarter 2	Quarter 3	Quarter 4	Total
Letter/Cards					
Posted	6,761,665	7,837,596	7,706,050	7,831,508	30,136,819
Domestic	6,665,689	7,762,871	7,659,494	7,774,023	29,862,077
Foreign Dispatched	95,976	74,725	46,556	57,485	274,742
Foreign Received	644,582	756,506	829,335	656,277	2,886,700
Total	14,167,912	16,431,698	16,241,435	16,319,293	63,160,338
Printed Matter					
Posted	63,149	82,020	56,913	51,981	254,063
Domestic	54,929	75,426	59,909	44,879	235,143
Foreign Dispatched	8,220	6,594	6,004	7,102	27,920
Foreign Received	15,114	18,050	15,301	18,524	66,989
Total	141,412	182,090	138,127	122,486	584,115
Small Packets					
Posted	410	126	203	226	965
Foreign Dispatched	402	126	103	226	857
Foreign Received	4,319	3,738	4,076	4,806	16,939
Total	5,131	3,990	4,382	5,258	18,761
Grand Total	14,314,455	16,617,778	16,383,944	16,447,037	63,763,214

Source: Botswana Postal Services

Table 4.21 : Revenue from Botswana Postal Services by Quarter (2010)

	Q1	Q2	Q3	Q4	TOTAL
ESM Income	20,492,966	640,542	739,313	190,697	22,063,518
EMS Income Domestic	528,292	210,303	551,971	222,528	1,513,093
EMS Income International	21,021,258	850,845	1,291,284	413,225	23,576,611
Bag Rental Income	970,225	525,077	389,875	260,257	2,145,434
Sale of Stamps	1,336,852	1,187,917	1,338,803	457,939	4,321,510
Boxes and Key sold	196,973	130,913	113,599	35,311	476,796
Boxes Rental Income	3,646,093	4,127,310	3,681,097	472,976	11,927,476
Hybrid Mail	780,589	729,623	785,085	19,512	2,314,810
Bulk Posted	4,733,798	6,083,275	9,645,265	3,390,303	23,852,641
Franking Machine	352,033	334,487	607,140	240,913	1,534,573
Bag Rental Penalty	1,439,096	284,748	67,760,558	14,706	69,499,108
Government mail	6,054,475	1,979,509	2,840,191	907,635	11,781,810
Philatelic sales	233,276	431,166	440,695	141,526	1,246,662
Money order comm	2,641,159	2,641,159	2,655,640	937,224	8,875,183
Money fax	-	643,197	658,097	833,861	2,135,155
Postal order Comm	-	37,820	70,109	66,372	174,301
Western Union comm	-	760,931	711,432	1,290,131	2,762,494
Other comm.	-	13,035	13,167	17,564	43,766
Daily News	-	3,049,674	3,049,674	3,049,674	9,149,022
GRAND TOTAL	64,427,085	20,156,873	92,840,516	7,704,750	185,129,224

Source: Botswana Postal Services

APPENDIX 8: RADIO AND TELEVISION

Table 4.22: Public and Private Radio weekly Broadcasting Hours by Month- 2010

Month	General Programmes	Religious Programmes	Instructional/Special Programmes	Commercial	Setswana Programmes	English Programmes	Other Languages
				Advertising Programmes			
January	1,434	47	83	236	748	805	-
February	1,434	47	83	236	748	805	-
March	1,434	47	83	236	748	805	-
April	1,434	47	83	236	748	805	-
May	1,434	47	83	236	748	805	-
June	1,434	47	83	236	748	805	-
July	1,434	47	83	236	748	805	-
August	1,434	47	83	236	748	805	-
September	1,434	47	83	236	748	805	-
October	1,434	47	83	236	748	805	-
November	1,434	47	83	236	748	805	-
December	1,434	47	83	236	748	805	-
Total	17,208	564	996	2,832	8,976	9,660	-

Source : Botswana
Television

Table 4.23: Television Weekly Broadcasting Hours by Month - 2010

Month	General Programmes	Religious Programmes	Special Programmes	Commercial / Advertising Programmes	Setswana Programmes	English Programmes	Other Programmes
January	826	14	-	14	308	518	7
February	826	14	-	14	308	518	7
March	826	14	-	14	308	518	7
April	826	14	-	14	308	518	7
May	826	14	-	14	308	518	7
June	826	14	-	14	308	518	7
July	826	14	-	14	308	518	7
August	826	14	-	14	308	518	7
September	826	14	-	14	308	518	7
October	826	14	-	14	308	518	7
November	826	14	-	14	308	518	7
December	826	14	-	14	308	518	7
Total	9,912	168	-	168	3,696	6,216	84

Source : Botswana Television

APPENDIX 9: OWNERSHIP OF MEDIA DURABLES AND ACCESS TO MEDIA BY HOUSEHOLDS

Table 4.24: Ownership of Media Durables by Sex and Economic Activity of Household Head, 2001

Sex and Durables	Currently Economically Active									Total
	Employees		Self Employed		Worked But Not For Cash					
	Paid Cash	Paid in Kind	No Employees	With Employees	Unpaid Family Helper	Worked in Own Lands/Cattle post	Actively Seeking Work	Unknown	Others	
Both Sexes										
Radio	144,019	572	14,101	8,336	1,037	6,557	14,043	79	84,638	273,382
Television	68,987	129	4,991	5,969	116	708	3,354	36	17,423	101,713
Computer	10,885	30	562	2,275	10	57	223	8	1,745	15,795
Phone	26,290	183	6,758	6,824	224	1,224	5,295	48	88,700	135,546
Female										
Radio	96,628	409	7,138	6,690	629	5,191	7,339	38	31,764	155,826
Television	46,775	78	2,766	4,926	61	563	1,652	20	6,687	63,528
Computer	8,375	22	400	2,036	4	47	112	4	746	11,746
Phone	55,150	122	3,431	5,532	120	948	2,361	23	10,019	77,706
Males										
Radio	47,391	163	6,963	1,646	408	1,366	6,704	41	52,874	117,556
Television	21,957	51	2,225	1,043	55	145	1,702	16	10,991	38,185
Computer	2,510	8	162	239	6	10	111	4	999	4,049
Phone	31,140	61	3,327	1,292	104	276	2,934	25	18,481	57,640

Source : Population and Housing Census 2001

APPENDIX 9

Definitions	
Computer	A computer refers to a desktop or laptop computer. It does not include equipment with some embedded computing abilities such as mobile cellular phones, personal digital assistants (PDAs) or TV sets.
Internet	Is a world – wide public computer network It provides access to a number of communication services including services including the World – Wide Web and carries email, news, entertainment and data files. Access may be any device enabling internet access (not only a computer). It may also be by mobile phone. PDA, games machine, digital T.V. etc. Access can be via a fixed
Intranet	Refers to a network using the same protocol as the Internet and allowing communication within an organization .It is typically set up behind a firewall to control access.
Extranet	An extranet is a private, secure extension of an internet running on Internet protocol. It allows selected external users to access some parts of an organization’s intranet.
Website	Location on the wide world web identified by a web address. Collection of web files on a particular subject that includes a beginning file called a home page. Information is encoded with specific languages (Hypertext mark – up language (HTML), XML, Java) readable with a web browser , like Netscape’s Navigator or Microsoft’s Internet Explorer.