

Transport & Infrastructure Statistics

Quarter 4, 2025

Private Bag 0024, Gaborone
Tel: 3671300
Toll Free: 0800 600 200

Four Thirty Square, Plot 54350
PG Matante Road,
CBD, Gaborone

E-mail: info@statsbots.org.bw
Website: www.statsbots.org.bw



STATISTICS BOTSWANA

**TRANSPORT AND INFRASTRUCTURE
STATISTICS**
QUARTER 4, 2025

Preface

This Stats Brief presents a summary of Transport and Infrastructure Statistics for Quarter 4, 2025. The publication provides an overview of Motor Vehicle Registrations, Rail and Air Transport during the quarter under review.

In Q4 2025, first-time vehicle registrations totaled 9,942, representing a 3.7 percent decrease from 10,324 vehicles recorded in Q3 2025. Passenger cars dominated the registrations with a 72.8 percent share. Used vehicles accounted for 79.6 percent of the total registrations, followed by brand-new vehicles at 20.3 percent and rebuilt vehicles at 0.1 percent.

Rail cargo volume declined by 32.4 percent this quarter to 163,681 tonnes, from 242,067 tonnes in the previous quarter. This movement generated P39.9 million in revenue.

Q4 2025 had 18,966 total aircraft movements, with domestic flights accounting for 79.3 percent and international flights for 20.7 percent. Air passenger traffic reached 236,827, representing a 13.4 percent decline from the 273,560 movements recorded in Q3 2025.

For more information and further enquiries, contact the Directorate of Stakeholder Relations at **+267 367 1300**.

This publication, and all other Statistics Botswana outputs/ publications are available on the website at (<http://www.statsbots.org.bw>) and at the Statistics Botswana Information Resource Centre (Head-Office, Gaborone).

Statistics Botswana acknowledges and extends gratitude to the various Government departments and/or organizations that provided information for this publication.



Dr. Lucky Mokgatlhe
Acting Statistician General
May 2026

1. MOTOR VEHICLE REGISTRATION

1.1 Motor Vehicles Registered For the First Time

A 3.7 percent drop in first-time motor vehicle registrations was recorded this quarter, from 10,324 to 9,942 vehicles. While most vehicle body types experienced a decline, registrations for tankers/horses and trailers increased by 39.5 percent and 16.7 percent, respectively. Despite a 3.5 percent decline in passenger car registrations, this body type remained the most popular, accounting for 72.8 percent of the total. See Table 1 in Appendix 1 and Figure 1 below for more details.

FIGURE 1: Quarter-to-Quarter Percentage Change in Motor Vehicle First Registrations by Body Type, Q4 2025

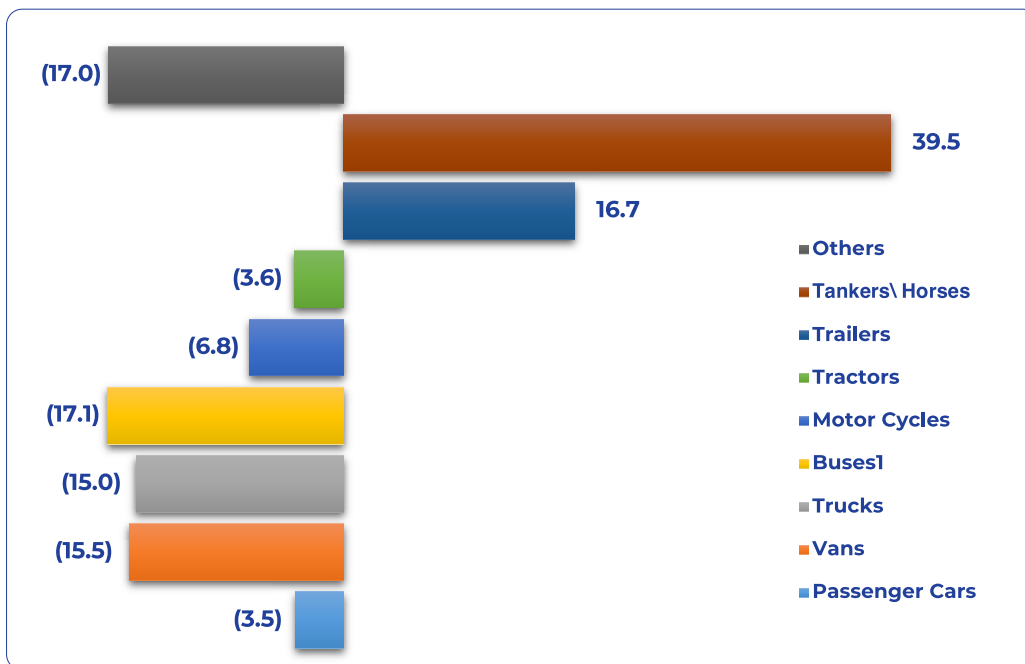
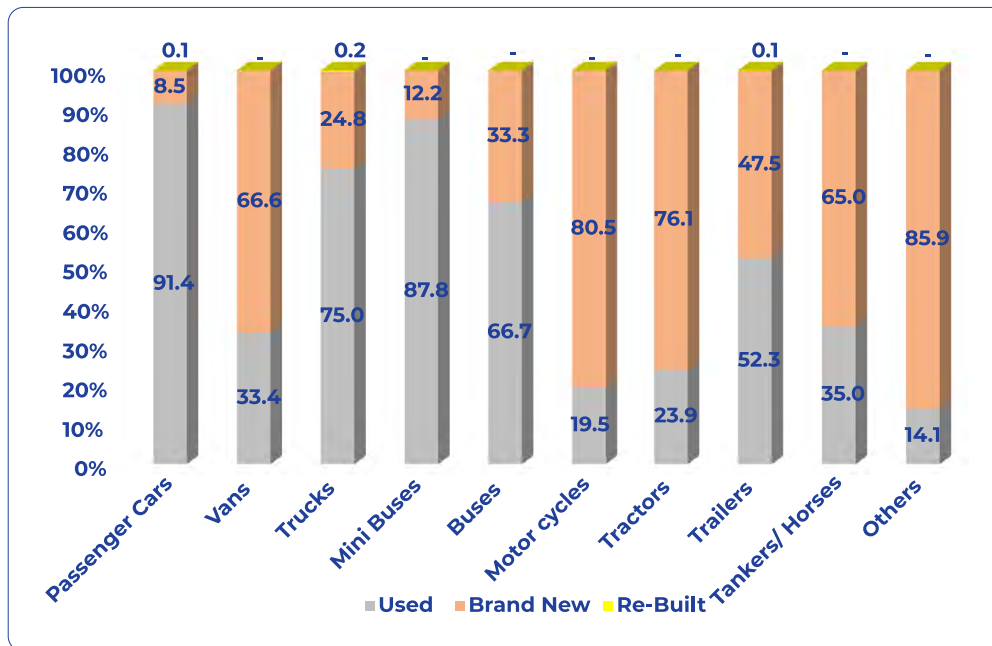


Table 2 in Appendix 1 shows that during Q4 2025, used motor vehicles dominated first-time registrations, accounting for 79.6 percent of the total. Brand-new vehicles accounted for 20.3 percent, while rebuilt vehicles made up the remaining 0.1 percent. Used vehicles from Japan constituted the majority of the used vehicle registrations this quarter (85.2 percent), followed by those from South Africa (6.7 percent). Conversely, the majority of brand-new vehicles (72.4 percent), originated from South Africa, followed by those from Botswana (9.0 percent).

Passenger cars constituted the majority of used vehicles, accounting for 83.7 percent of the total. Trailers, trucks and vans followed at 5.4 percent, 4.0 percent and 3.3 percent, respectively. Passenger cars also dominated in brand-new first-time registrations (30.3 percent) during the quarter, followed by vans (26.0 percent). Among rebuilt vehicles, passenger cars remained the largest category at 75.0 percent. These data are detailed in Table 3 (Appendix 1) and Figure 2 below.

FIGURE 2: Proportion of Motor Vehicles Registered for the First Time by Body Type and Vehicle Type, Q4 2025



Mazda accounted for the largest proportion of first-time registered vehicles during the reporting period, making up 19.3 percent of the total. Honda and Toyota followed, at 18.9 percent and 16.9 percent of the total registrations respectively. **See Table 4 in Appendix 1.**

December accounted for 38.7 percent of first registrations in Q4 2025. October and November accounted for 32.6 percent and 28.7 percent, respectively (**Table 5, Appendix 1**).

Gaborone stations recorded the highest number of first registrations during the quarter, accounting for 58.2 percent of the total. Francistown followed with 8.7 percent, while Molepolole accounted for 7.2 percent of all registrations. **See Table 6 in Appendix 1**

1.2 Motor Vehicle License Renewals

Motor vehicle license renewals totaled 169,186 this quarter, representing a 2.8 percent year-on-year increase (vs. Q4 2024) and a 9.4 percent increase over the previous quarter. Passenger cars accounted for the largest share of renewals (66.8 percent), followed by vans (17.3 percent). **Refer to Table 7 in Appendix 1 and Figure 3.**

FIGURE 3: Distribution of Motor Vehicle License Renewals by Quarter and Year, Q1 2022-Q4 2025

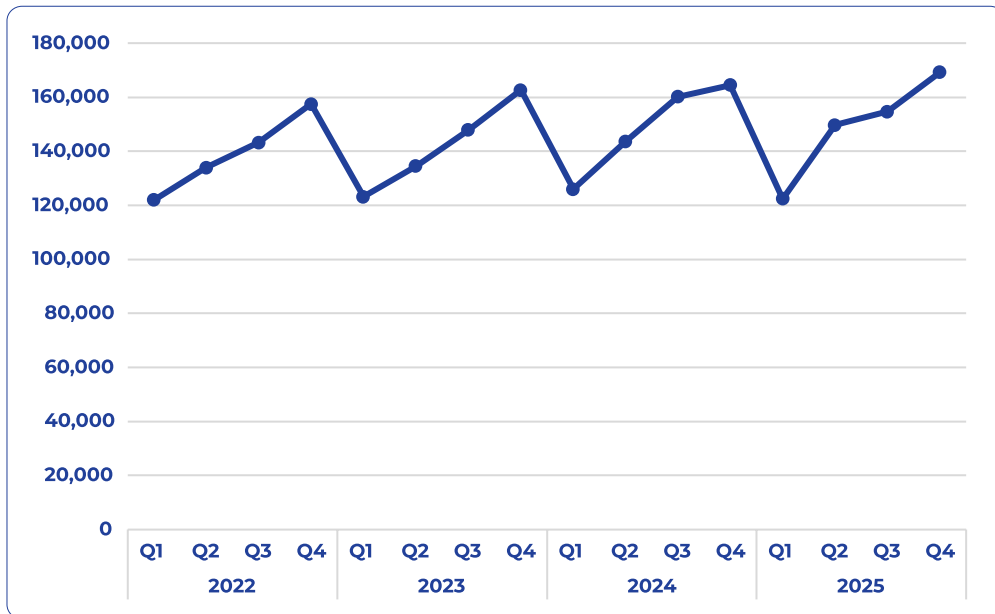


Figure 3 above shows that a higher number of motor vehicle license renewals were done during Q4 compared to the other quarters.

In Q4 2025, the highest number of license renewals was recorded in December at 37.1 percent, followed by those recorded in October at 32.8 percent. The lowest number of renewals occurred in November at 30.1 percent. This is shown in **Table 8** of **Appendix 1**.

Toyota models accounted for 41.2 percent of all vehicle license renewals. Mazda held the second-largest share at 10.5 percent, followed by Honda at 8.8 percent of the total motor vehicle license (**Table 9, Appendix 1**).

2. RAIL TRANSPORT

2.1 Rail Freight

The volume of goods transported by rail during the quarter under review declined by 32.4 percent, from 242,067 net tonnes recorded in the previous quarter to 163,681 net tonnes. The decline in total freight volumes was observed across all traffic categories; imports went down by 44.8 percent and transit traffic decreased by 42.4 percent. Local traffic and total exports declined by 27.2 and 18.9 percent, respectively.

Exports accounted for the largest volume of freight at 34.1 percent. Local traffic followed at 29.2 percent, while imported goods and transit traffic represented 27.2 percent and 9.5 percent, respectively.

October recorded the highest volume of goods transported, contributing 34.7 percent of the total net tonnes. December followed with 33.4 percent, while November represented the lowest share at 31.9 percent (**Table 10, Appendix 2**).

2.2 Revenue Generated from Rail Freight

The total revenue from rail freight transportation decreased by 34.1 percent, from P60.5 million in the preceding quarter to P39.9 million. This downward trend was reflected across all traffic categories. The most significant reduction occurred in imports revenue, which fell by 49.1 percent. Transit traffic revenue declined by 40.3 percent, while local traffic and exports fell by 25.7 percent and 25.0 percent, respectively.

In terms of revenue composition, local traffic remained the primary contributor, representing 32.9 percent of the total. Exports and imports accounted for 32.8 percent and 21.5 percent, respectively, while transit traffic contributed the remaining 12.8 percent. Detailed data is available in **Table 11** of **Appendix 2**.

FIGURE 4: Comparison of Volume of Goods and Revenue Generated by Traffic Type, Q4 2025

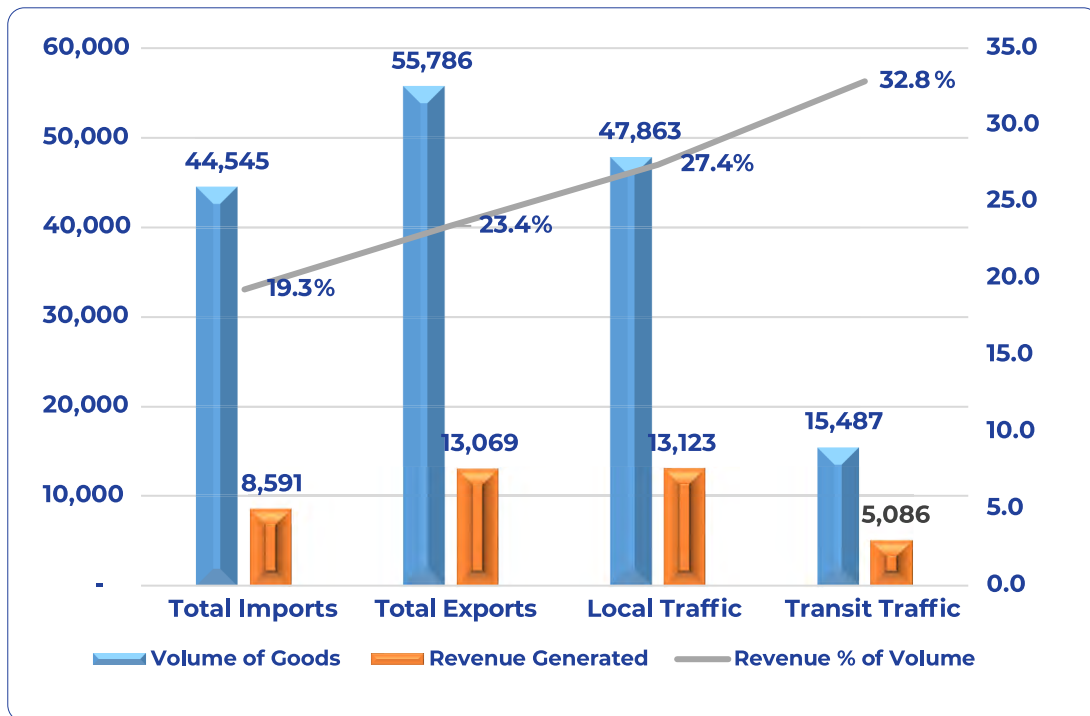


Figure 4 above shows that though exports dominated in terms of the volume of goods transported, and local traffic contributed the largest share of revenue, transit traffic yielded the highest revenue relative to the volume transported, with 32.2 percent, indicating comparatively higher revenue generation per unit of goods. Total imports yielded the lowest revenue relative to volume of goods transported at 19.3 percent.

3. AIR TRANSPORT

3.1 Aircraft Movements

During Q4 2025, total aircraft movements amounted to 18,966, representing 28.3 percent decrease compared to 26,453 movements recorded in Q3 2025. This downward trend was reflected across both sectors, with domestic movements declining by 30.2 percent and international movements decreasing by 20.2 percent.

Despite the overall decline, domestic traffic remained dominant, comprising 79.3 percent of total movements, while international traffic accounted for 20.7 percent (see Table 12, Appendix 3).

Tables 13a and Table 13b in Appendix 3 show that during the quarter, the majority of aircraft movements were non-scheduled flights, accounting for 72.7 percent. Most of these were domestic movements (92.5 percent, while international non-scheduled movements contributed 7.5 percent. Scheduled movements constituted 19.7 percent of the total, with 75.8 percent being international and 24.2 percent domestic. Scenic flights accounted for 5.7 percent of total aircraft movements, all of which were domestic, while private flights recorded the lowest activity at 1.9 percent.

The majority of aircraft movements were recorded at Maun airport (70.2 percent), followed by SSKIA (15.1 percent) and at Kasane airport (13.4 percent), as shown in Table 14 of Appendix 3.

3.2 Air Passenger Movements

A total of 236,827 air passenger movements were registered this quarter, representing a 13.4 percent decline from the 273,560 movements recorded in Q3 2025. The drop was reflected in both domestic and international movements, which decreased by 21.2 percent and 8.3 percent, respectively. International

movements accounted for the majority of traffic at 63.7 percent, while domestic movements made up the remaining 36.3 percent (see Table 15, Appendix 3).

Scheduled passenger movements accounted for 78.0 percent of the total passenger movements. Non-scheduled passenger movements followed at 20.1, while scenic and private ones accounted for 1.4 and 0.5 percent respectively. All categories of passenger movements went down during the quarter. Scenic passenger movements experienced the largest decline, falling by 53.4 percent, followed by non-scheduled movements which decreased by 31.2 percent. Private passenger movements fell by 25.8 percent, while scheduled passenger movements recorded the smallest decline of 5.6 percent. This is shown in Table 16 in Appendix 3.

During Q4 2025, Sir Seretse Khama International Airport (SSKIA) was the busiest airport, accounting for 51.9 percent of total passenger movements, a 4.4 percent increase compared to Q3. Out of 122,878 passenger movements at SSKIA, 98.1 percent were scheduled. SSKIA handled the bulk of these, representing 65.3 percent of all scheduled movements nationally. Maun Airport recorded the second-highest number of passengers, contributing 36.0 percent of total passenger traffic. Maun dominated non-scheduled passenger traffic (74.2 percent) and scenic flight passengers (96.7 percent). Details are available in Table 17 of Appendix 3.

FIGURE 5: Flight intensity by Type of Flight, Q4 2025

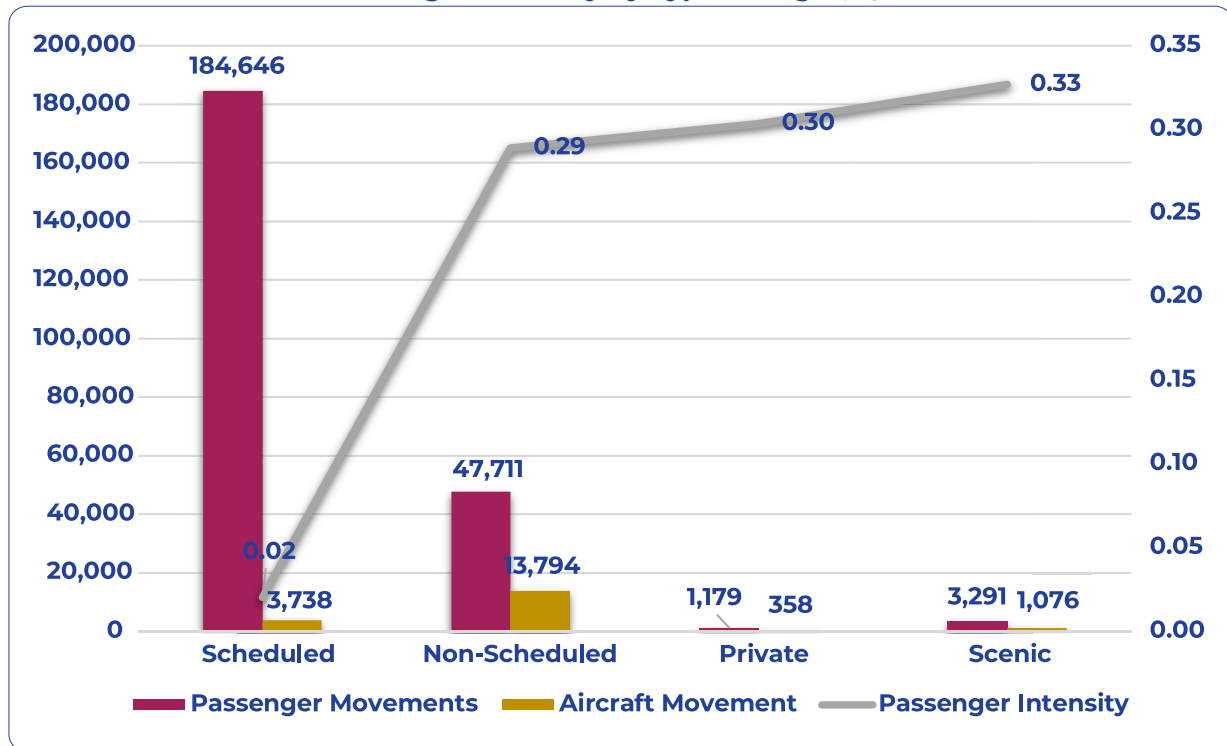


Figure 5 shows scheduled flights have extremely low intensity (0.02), meaning very few passengers per flight, likely indicating many empty or under-utilized flights. Non-Scheduled, Private, and Scenic flights all have a higher intensity (0.29–0.33), showing each flight carries about 1/3 of a passenger on average.

APPENDIX 1: MOTOR VEHICLE REGISTRATION



8. Transport and Infrastructure Statistics

Quarter 4, 2025

TABLE 1: Motor Vehicles Registered For The First Time by Body Type, Q1 2022 - Q4 2025

Year/Quarter		Motor Vehicle Body Type									Total
		Passenger Cars	Vans		Buses ¹	Motor Cycles	Tractors	Trailers	Tankers\Horses	Others	
2022	Q1	5,648	846	490	185	55	121	474	99	56	7,974
	Q2	5,632	682	450	165	60	79	521	93	45	7,727
	Q3	5,731	821	479	162	70	111	602	69	50	8,095
	Q4	5,679	951	427	143	75	182	581	113	57	8,208
2023	Q1	5,177	915	370	139	18	98	453	79	73	7,322
	Q2	6,829	877	438	172	39	70	547	110	92	9,174
	Q3	8,128	1,117	495	192	28	99	624	92	101	10,876
	Q4	8,621	976	460	199	123	213	725	142	81	11,540
2024	Q1	7,678	1,274	447	211	34	146	542	123	79	10,534
	Q2	8,689	1,028	544	210	47	139	628	91	83	11,459
	Q3	8,925	1,089	551	215	51	208	686	146	67	11,938
	Q4	9,590	1,447	568	228	61	343	768	144	95	13,244
2025	Q1	8,290	1,261	585	284	25	328	602	133	75	11,583
	Q2	8,256	1,221	562	257	40	142	633	114	71	11,296
	Q3	7,504	935	499	228	44	195	696	129	94	10,324
	Q4	7,240	790	424	189	41	188	812	180	78	9,942
Percent of Total											
2022	Q1	70.8	10.6	6.1	2.3	0.7	1.5	5.9	1.2	0.7	100
	Q2	72.9	8.8	5.8	2.1	0.8	1.0	6.7	1.2	0.6	100
	Q3	70.8	10.1	5.9	2.0	0.9	1.4	7.4	0.9	0.6	100
	Q4	69.2	11.6	5.2	1.7	0.9	2.2	7.1	1.4	0.7	100
2023	Q1	70.7	12.5	5.1	1.9	0.2	1.3	6.2	1.1	1.0	100
	Q2	74.4	9.6	4.8	1.9	0.4	0.8	6.0	1.2	1.0	100
	Q3	74.7	10.3	4.6	1.8	0.3	0.9	5.7	0.8	0.9	100
	Q4	74.7	8.5	4.0	1.7	1.1	1.8	6.3	1.2	0.7	100
2024	Q1	72.9	12.1	4.2	2.0	0.3	1.4	5.1	1.2	0.7	100
	Q2	75.8	9.0	4.7	1.8	0.4	1.2	5.5	0.8	0.7	100
	Q3	74.8	9.1	4.6	1.8	0.4	1.7	5.7	1.2	0.6	100
	Q4	72.4	10.9	4.3	1.7	0.5	2.6	5.8	1.1	0.7	100
2025	Q1	71.6	10.9	5.1	2.5	0.2	2.8	5.2	1.1	0.6	100
	Q2	73.1	10.8	5.0	2.3	0.4	1.3	5.6	1.0	0.6	100
	Q3	72.7	9.1	4.8	2.2	0.4	1.9	6.7	1.2	0.9	100
	Q4	72.8	7.9	4.3	1.9	0.4	1.9	8.2	1.8	0.8	100

TABLE 1 CONT'D: Motor Vehicles Registered For The First Time by Body Type, Q1 2022 - Q4 2025

Year/Quarter	Motor Vehicle Body Type										Total
	Passenger Cars	Vans		Buses ¹	Motor Cycles	Tractors	Trailers	Tankers\Horses	Others		
Quarter - to - Quarter Percentage Change											
2022	Q1	(23.9)	7.6	(11.4)	18.6	66.7	(56.3)	(26.9)	(19.5)	(8.2)	(20.8)
	Q2	(0.3)	(19.4)	(8.2)	(10.8)	9.1	(34.7)	9.9	(6.1)	(19.6)	(3.1)
	Q3	1.8	20.4	6.4	(1.8)	16.7	40.5	15.5	(25.8)	11.1	4.8
	Q4	(0.9)	15.8	(10.9)	(11.7)	7.1	64.0	(3.5)	63.8	14.0	1.4
2023	Q1	(8.8)	(3.8)	(13.3)	(2.8)	(76.0)	(46.2)	(22.0)	(30.1)	28.1	(10.8)
	Q2	31.9	(4.2)	18.4	23.7	116.7	(28.6)	20.8	39.2	26.0	25.3
	Q3	19.0	27.4	13.0	11.6	(28.2)	41.4	14.1	(16.4)	9.8	18.6
	Q4	6.1	(12.6)	(7.1)	3.6	339.3	115.2	16.2	54.3	(19.8)	6.1
2024	Q1	(10.9)	30.5	(2.8)	6.0	(72.4)	(31.5)	(25.2)	(13.4)	(2.5)	(8.7)
	Q2	13.2	(19.3)	21.7	(0.5)	38.2	(4.8)	15.9	(26.0)	5.1	8.8
	Q3	2.7	5.9	1.3	2.4	8.5	49.6	9.2	60.4	(19.3)	4.2
	Q4	7.5	32.9	3.1	6.0	19.6	64.9	12.0	(1.4)	41.8	10.9
2025	Q1	(13.6)	(12.9)	3.0	24.6	(59.0)	(4.4)	(21.6)	(7.6)	(21.1)	(12.5)
	Q2	(0.4)	(3.2)	(3.9)	(9.5)	60.0	(56.7)	5.1	(14.3)	(5.3)	(2.5)
	Q3	(9.1)	(23.4)	(11.2)	(11.3)	10.0	37.3	10.0	13.2	32.4	(8.6)
	Q4	(3.5)	(15.5)	(15.0)	(17.1)	(6.8)	(3.6)	16.7	39.5	(17.0)	(3.7)

Source:DRTS, Ministry of Transport and Public Works
Buses¹
Includes Buses and Mini Buses

TABLE 2: Motor Vehicles Registered For The First Time by Vehicle Type and Country of Origin, Q4 2025

Country of Origin	Motor Vehicle Type			
	Used	Brand New	Rebuilt	Total
Botswana	360	181	1	542
China	18	154	-	172
Japan	6,743	37	7	6,787
Republic Of South Africa	527	1,463	-	1,990
United Kingdom	73	8	-	81
Other countries of origin	191	179	-	370
Total	7,912	2,022	8	9,942
	Percent of Total			
Botswana	66.4	33.4	0.2	100
China	10.5	89.5	-	100
Japan	99.4	0.5	0.1	100
Republic Of South Africa	26.5	73.5	-	100
United Kingdom	90.1	9.9	-	100
Other countries of origin	51.6	48.4	-	100
Total	79.6	20.3	0.1	100
	Percent of Total			
Botswana	4.6	9.0	12.5	5.5
China	0.2	7.6	-	1.7
Japan	85.2	1.8	87.5	68.3
Republic Of South Africa	6.7	72.4	-	20.0
United Kingdom	0.9	0.4	-	0.8
Other countries of origin	2.4	8.9	-	3.7
Total	100	100	100	100

Source:DRTS, Ministry of Transport and Public Works
Other countries of origin includes Korea, Zambia,Zimbabwe,Singapore,Germany, etc

TABLE 3: Motor Vehicles Registered For The First Time by Body Type and Vehicle Type, Q4 2025

Motor Vehicle Type	Motor Vehicle Body Type										
	Passenger Cars	Vans	Trucks	Mini Buses	Buses	Motor cycles	Tractors	Trailers	Tankers/Horses	Others	Total
Used	6,621	264	318	129	28	8	45	425	63	11	7,912
Brand New	613	526	105	18	14	33	143	386	117	67	2,022
Re-Built	6	-	1	-	-	-	-	1	-	-	8
Total	7,240	790	424	147	42	41	188	812	180	78	9,942
	Percent of Total										
Used	91.5	33.4	75.0	87.8	66.7	19.5	23.9	52.3	35.0	14.1	79.6
Brand New	8.5	66.6	24.8	12.2	33.3	80.5	76.1	47.5	65.0	85.9	20.3
Re-Built	0.1	-	0.2	-	-	-	-	0.1	-	-	0.1
Total	100	100	100	100	100	100	100	100	100	100	100
	Percent of Total										
Used	83.7	3.3	4.0	1.6	0.4	0.1	0.6	5.4	0.8	0.1	100
Brand New	30.3	26.0	5.2	0.9	0.7	1.6	7.1	19.1	5.8	3.3	100
Re-Built	75.0	-	12.5	-	-	-	-	12.5	-	-	100
Total	72.8	7.9	4.3	1.5	0.4	0.4	1.9	8.2	1.8	0.8	100

Source: Department of Road Transport and Safety, Ministry of Transport and Public Works

TABLE 4: Motor Vehicles Registered For The First Time by Body Type and Make of Vehicle, Q4 2025

Make	Motor Vehicle Body Type										Total	Percent of Total
	Passenger Cars	Vans	Trucks	Mini Buses	Buses	Motor Cycles	Tractors	Trailers	Tankers\Horses	Others		
Audi	370	-	-	-	-	-	-	-	-	-	370	3.7
BMW	198	-	-	-	-	-	-	-	-	-	198	2.0
Chevrolet	2	1	-	-	-	-	-	-	-	-	3	0.03
Chrysler	-	-	-	-	-	-	-	-	-	-	-	-
Daewoo	-	-	-	-	-	-	-	-	-	-	-	-
Dodge	1	1	-	-	-	-	-	-	-	-	2	0.02
Ford	13	129	-	4	-	-	15	-	-	-	161	1.6
Hino	-	-	-	-	3	-	-	-	-	-	3	0.03
Home-made	-	-	-	-	-	-	-	376	1	-	377	3.8
Honda	1,853	1	2	-	-	22	-	-	-	-	1,878	18.9
Hyundai	9	1	-	-	-	-	-	-	-	-	10	0.1
Isuzu	3	39	12	-	1	-	-	-	1	-	56	0.6
Iveco	-	-	2	2	6	-	-	-	1	-	11	0.1
Jeep	33	1	-	-	-	-	-	-	-	-	34	0.3
Kia	6	-	3	-	-	-	-	-	-	-	9	0.1
Land Rover	32	3	-	-	-	-	-	-	-	-	35	0.4
Lexus	100	-	-	-	-	-	-	-	-	-	100	1.0
Mahindra	1	14	-	-	-	-	-	-	-	-	15	0.2
MAN	-	-	1	-	-	-	-	-	14	1	16	0.2
Massey Ferguson	-	-	-	-	-	-	64	-	-	-	64	0.6
Mazda	1,906	1	15	-	-	-	-	-	-	-	1,922	19.3
Mercedes - Benz	474	-	3	2	10	-	-	-	9	1	499	5.0
Mitsubishi	11	2	6	-	2	-	-	-	-	-	21	0.2
Nissan	169	70	48	22	6	-	-	-	-	-	315	3.2
Opel	-	-	-	-	-	-	-	-	-	-	-	-
Peugeot	3	-	-	-	-	-	-	-	-	-	3	0.03
Renault	4	1	-	-	-	-	-	-	-	-	5	0.1
Scania	-	-	5	-	9	-	-	-	46	-	60	0.6
Subaru	9	-	-	-	-	-	-	-	-	-	9	0.1
Tata	1	1	11	-	-	-	-	-	-	-	13	0.1
Toyota	868	504	193	117	3	-	-	-	-	-	1,685	16.9
Volkswagen(VW)	857	7	-	-	-	-	-	-	-	-	864	8.7
Volvo	136	-	5	-	1	-	-	-	32	-	174	1.8
Yamaha	-	-	-	-	-	1	-	-	-	-	1	0.01
Other	181	14	118	-	1	18	109	436	76	76	1,029	10.4
Total	7,240	790	424	147	42	41	188	812	180	78	9,942	100

Source: Department of Road Transport and Safety, Ministry of Transport and Public Works

TABLE 5: Motor Vehicles Registered For The First Time by Body Type and Month of Registration, January 2022 - December 2025

Year	Month	Motor Vehicle Body Type										Total
		Passenger Cars	Vans	Trucks	Mini Buses	Buses	Motor Cycles	Tractors	Trailers	Tanker/Horses	Others	
2023	January	1,438	210	109	23	7	4	38	137	9	18	1,993
	February	1,588	318	113	39	6	5	22	118	18	31	2,258
	March	2,151	387	148	52	12	9	38	198	52	24	3,071
	Q1	5,177	915	370	114	25	18	98	453	79	73	7,322
	April	1,835	273	125	41	11	26	25	165	53	30	2,584
	May	2,312	264	149	56	12	2	21	163	31	26	3,036
	June	2,682	340	164	45	7	11	24	219	26	36	3,554
	Q2	6,829	877	438	142	30	39	70	547	110	92	9,174
	July	2,390	328	129	42	11	11	26	211	30	25	3,203
	August	2,927	384	184	57	9	12	33	232	35	44	3,917
	September	2,811	405	182	59	14	5	40	181	27	32	3,756
	Q3	8,128	1,117	495	158	34	28	99	624	92	101	10,876
	October	2,577	314	144	63	3	53	69	206	71	26	3,526
	November	2,856	357	166	47	19	32	81	229	38	38	3,863
December	3,188	305	150	51	16	38	63	290	33	17	4,151	
Q4	8,621	976	460	161	38	123	213	725	142	81	11,540	
2024	January	2,410	399	129	56	5	14	63	136	34	17	3,263
	February	2,493	361	155	50	10	12	41	214	66	31	3,433
	March	2,775	514	163	71	19	8	42	192	23	31	3,838
	Q1	7,678	1,274	447	177	34	34	146	542	123	79	10,534
	April	2,558	357	184	44	12	13	41	217	33	26	3,485
	May	3,364	346	175	69	12	15	53	212	25	19	4,290
	June	2,767	325	185	61	12	19	45	199	33	38	3,684
	Q2	8,689	1,028	544	174	36	47	139	628	91	83	11,459
	July	2,790	369	169	51	20	5	68	197	34	22	3,725
	August	3,159	373	201	56	16	16	82	260	62	24	4,249
	September	2,976	347	181	51	21	30	58	229	50	21	3,964
	Q3	8,925	1,089	551	158	57	51	208	686	146	67	11,938
	October	2,914	625	192	60	17	13	83	230	67	26	4,227
	November	3,081	359	194	61	17	31	122	259	37	31	4,192
December	3,595	463	182	59	14	17	138	279	40	38	4,825	
Q4	9,590	1,447	568	180	48	61	343	768	144	95	13,244	
2025	January	2,771	435	180	67	12	7	139	165	25	19	3,820
	February	2,675	409	199	74	15	7	76	189	58	28	3,730
	March	2,844	417	206	105	11	11	113	248	50	28	4,033
	Q1	8,290	1,261	585	246	38	25	328	602	133	75	11,583
	April	2,235	296	151	62	13	17	53	175	30	22	3,054
	May	3,316	522	230	91	14	11	44	213	35	32	4,508
	June	2,705	403	181	65	12	12	45	245	49	17	3,734

TABLE 5 CONT'D: Motor Vehicles Registered For The First Time by Body Type and Month of Registration, January 2022 - December 2025

Year	Month	Motor Vehicle Body Type										Total
		Passenger Cars	Vans	Trucks	Mini Buses	Buses	Motor Cycles	Tractors	Trailers	Tanker/Horses	Others	
2025	Q2	8,256	1,221	562	218	39	40	142	633	114	71	11,296
	July	2,680	367	174	56	16	2	53	215	35	24	3,622
	August	2,500	310	165	67	18	26	57	246	63	34	3,486
	September	2,324	258	160	55	16	16	85	235	31	36	3,216
	Q3	7,504	935	499	178	50	44	195	696	129	94	10,324
	October	2,301	297	148	51	12	16	56	259	65	39	3,244
	November	2,086	238	122	42	11	18	43	219	58	16	2,853
	December	2,853	255	154	54	19	7	89	334	57	23	3,845
	Q4	7,240	790	424	147	42	41	188	812	180	78	9,942

Source: Department of Road Transport and Safety, Ministry of Transport and Public Works

TABLE 6: Motor Vehicles Registered For The First Time by Body Type and Station of Registration, Q4 2025

Station	Motor Vehicle Body Type										Total	Percent of Total
	Passenger Cars	Vans	Trucks	Mini Buses	Buses	Motor Cycles	Tractors	Trailers	Tankers/ Horses	Others		
Bobonong	8	7	2	-	-	-	-	9	-	-	26	0.3
Francistown	628	79	41	12	6	2	8	80	11	1	868	8.7
Gaborone	4,447	372	216	93	22	16	74	431	77	42	5,790	58.2
Ghanzi	15	4	2	-	-	-	-	5	-	2	28	0.3
Gumare	6	2	-	-	-	-	-	-	-	-	8	0.1
Jwaneng	31	5	-	-	-	-	3	12	3	-	54	0.5
Kang	6	1	-	-	-	-	1	1	-	-	9	0.1
Kanye	19	3	-	-	1	1	7	-	-	-	31	0.3
Kasane	26	44	3	1	-	1	3	4	1	-	83	0.8
Letlhakane	27	6	2	2	-	-	1	11	-	2	51	0.5
Lobatse	352	16	37	10	7	-	10	56	38	13	539	5.4
Mahalapye	81	38	6	2	-	-	4	11	1	-	143	1.4
Masunga	1	-	-	-	-	-	1	-	-	-	2	0.0
Maun	134	80	17	6	2	1	4	25	-	-	269	2.7
Mochudi	95	3	14	1	-	2	41	25	30	7	218	2.2
Molepolole	623	17	19	16	1	-	11	25	1	1	714	7.2
Palapye	130	7	4	-	-	1	7	38	4	3	194	2.0
Ramotswa	467	31	52	3	1	17	3	37	10	4	625	6.3
Selibe-Phikwe	72	29	4	-	2	-	4	24	4	3	142	1.4
Serowe	47	39	2	1	-	-	3	13	-	-	105	1.1
Shakawe	8	4	2	-	-	-	-	-	-	-	14	0.1
Sowa	1	-	-	-	-	-	-	1	-	-	2	0.0
Tsabong	14	3	-	-	-	-	1	4	-	-	22	0.2
Tutume	2	-	1	-	-	-	2	-	-	-	5	0.1
Total	7,240	790	424	147	42	41	188	812	180	78	9,942	100

Source: Department of Road Transport and Safety, Ministry of Transport and Public Works

TABLE 7: Motor Vehicles Licence Renewals by Body Type and Quarter, Q1 2022 - Q4 2025

Year/Quarter		Motor Vehicle Body Type									Total
		Passenger Cars	Vans	Trucks	Buses	Motor Cycles	Tractors	Trailers	Tankers/Horses	Others	
2022	Q1	76,808	24,500	7,822	4,255	423	1,027	5,732	820	540	121,927
	Q2	86,251	25,476	8,610	4,448	428	1,010	6,223	953	565	133,964
	Q3	92,744	26,314	8,897	4,787	465	1,265	7,200	935	602	143,209
	Q4	104,346	28,188	8,631	4,825	437	2,043	7,593	893	483	157,439
2023	Q1	77,320	24,822	7,939	4,204	385	1,124	5,908	881	618	123,201
	Q2	87,159	25,082	8,428	4,368	449	877	6,462	1,000	617	134,442
	Q3	96,422	26,751	9,104	4,778	463	1,328	7,384	981	650	147,861
	Q4	107,555	28,325	9,131	4,882	523	2,727	7,887	1,079	525	162,634
2024	Q1	80,233	24,437	7,688	4,197	406	1,345	6,024	1,004	639	125,973
	Q2	93,980	26,339	9,184	4,319	414	1,004	6,835	994	465	143,534
	Q3	104,865	28,458	9,671	4,947	499	1,533	8,293	1,153	706	160,125
	Q4	109,882	28,470	8,976	4,665	452	2,345	7,994	1,126	603	164,513
2025	Q1	77,840	23,562	7,765	3,973	367	1,525	5,736	1,036	619	122,423
	Q2	98,133	27,482	9,003	4,623	465	1,078	7,232	1,038	655	149,709
	Q3	101,301	27,693	9,413	4,548	464	1,319	8,006	1,214	702	154,660
	Q4	113,038	29,274	8,971	4,613	452	2,335	8,732	1,212	559	169,186
		Percent of Total									
2022	Q1	63.0	20.1	6.4	3.5	0.3	0.8	4.7	0.7	0.4	100
	Q2	64.4	19.0	6.4	3.3	0.3	0.8	4.6	0.7	0.4	100
	Q3	64.8	18.4	6.2	3.3	0.3	0.9	5.0	0.7	0.4	100
	Q4	66.3	17.9	5.5	3.1	0.3	1.3	4.8	0.6	0.3	100
2023	Q1	62.8	20.1	6.4	3.4	0.3	0.9	4.8	0.7	0.5	100
	Q2	64.8	18.7	6.3	3.2	0.3	0.7	4.8	0.7	0.5	100
	Q3	65.2	18.1	6.2	3.2	0.3	0.9	5.0	0.7	0.4	100
	Q4	66.1	17.4	5.6	3.0	0.3	1.7	4.8	0.7	0.3	100
2024	Q1	63.7	19.4	6.1	3.3	0.3	1.1	4.8	0.8	0.5	100
	Q2	65.5	18.4	6.4	3.0	0.3	0.7	4.8	0.7	0.3	100
	Q3	65.5	17.8	6.0	3.1	0.3	1.0	5.2	0.7	0.4	100
	Q4	66.8	17.3	5.5	2.8	0.3	1.4	4.9	0.7	0.4	100
2025	Q1	63.6	19.2	6.3	3.2	0.3	1.2	4.7	0.8	0.5	100
	Q2	65.5	18.4	6.0	3.1	0.3	0.7	4.8	0.7	0.4	100
	Q3	65.5	17.9	6.1	2.9	0.3	0.9	5.2	0.8	0.5	100
	Q4	66.8	17.3	5.3	2.7	0.3	1.4	5.2	0.7	0.3	100

TABLE 7 CON'T: Motor Vehicles Licence Renewals by Body Type and Quarter, Q1 2022 - Q4 2025

Year/Quarter		Motor Vehicle Body Type									Total
		Passenger Cars	Vans	Trucks	Buses ¹	Motor Cycles	Tractors	Trailers	Tankers/ Horses	Others	
		Quarter - to - Quarter Percentage Change									
2022	Q1	(24.4)	(11.8)	(10.6)	(16.5)	9.0	(51.4)	(21.8)	(10.5)	1.3	(21.1)
	Q2	12.3	4.0	10.1	4.5	1.2	(1.7)	8.6	16.2	4.6	9.9
	Q3	7.5	3.3	3.3	7.6	8.6	25.2	15.7	(1.9)	6.5	6.9
	Q4	12.5	7.1	(3.0)	0.8	(6.0)	61.5	5.5	(4.5)	(19.8)	9.9
2023	Q1	(25.9)	(11.9)	(8.0)	(12.9)	(11.9)	(45.0)	(22.2)	(1.3)	28.0	(21.7)
	Q2	12.7	1.0	6.2	3.9	16.6	(22.0)	9.4	13.5	(0.2)	9.1
	Q3	10.6	6.7	8.0	9.4	3.1	51.4	14.3	(1.9)	5.3	10.0
	Q4	11.5	5.9	0.3	2.2	13.0	105.3	6.8	10.0	(19.2)	10.0
2024	Q1	(25.4)	(13.7)	(15.8)	(14.0)	(22.4)	(50.7)	(23.6)	(7.0)	21.7	(22.5)
	Q2	17.1	7.8	19.5	2.9	2.0	(25.4)	13.5	(1.0)	(27.2)	13.9
	Q3	11.6	8.0	5.3	14.5	20.5	52.7	21.3	16.0	51.8	11.6
	Q4	4.8	0.04	(7.2)	(5.7)	(9.4)	53.0	(3.6)	(2.3)	(14.6)	2.7
2025	Q1	(29.2)	(17.2)	(13.5)	(14.8)	(18.8)	(35.0)	(28.2)	(8.0)	2.7	(25.6)
	Q2	26.1	16.6	15.9	16.4	26.7	(29.3)	26.1	0.2	65.0	22.3
	Q3	3.2	0.8	4.6	(1.6)	(0.2)	22.4	10.7	17.0	7.2	3.3
	Q4	11.6	5.7	(4.7)	1.4	(2.6)	77.0	9.1	(0.2)	(20.4)	9.4

Source: DRTS, Ministry of Transport and Public Works
Buses¹
Includes Buses and Mini Buses

TABLE 8: Motor Vehicles Licence Renewals by Body Type and Month of Renewal, Jan 2022 - Dec 2025

Year/Quarter		Motor Vehicle Body Type										Total
		Passenger Cars	Vans	Trucks	Mini Buses	Buses	Motor Cycles	Tractors	Trailers	Horses/Tankers	Others	
2023	Jan	21,684	7,080	2,236	1,144	103	136	374	1,684	216	153	34,810
	Feb	26,150	8,517	2,680	1,256	124	121	352	1,936	277	217	41,630
	Mar	29,486	9,225	3,023	1,420	157	128	398	2,288	388	248	46,761
	Q1	77,320	24,822	7,939	3,820	384	385	1,124	5,908	881	618	123,201
	Apr	24,417	7,464	2,313	1,074	141	144	208	1,872	274	190	38,097
	May	30,629	8,496	2,991	1,456	161	147	290	2,151	331	230	46,882
	Jun	32,113	9,122	3,124	1,391	145	158	379	2,439	395	197	49,463
	Q2	87,159	25,082	8,428	3,921	447	449	877	6,462	1,000	617	134,442
	Jul	30,872	8,641	2,861	1,282	164	177	373	2,276	296	178	47,120
	Aug	34,164	9,529	3,416	1,579	206	142	479	2,705	347	245	52,812
	Sep	31,386	8,581	2,827	1,367	180	144	476	2,403	338	227	47,929
	Q3	96,422	26,751	9,104	4,228	550	463	1,328	7,384	981	650	147,861
	Oct	31,785	8,939	3,045	1,372	149	206	1,053	2,354	426	190	49,519
	Nov	37,199	9,540	3,140	1,453	212	166	876	2,729	381	202	55,898
	Dec	38,571	9,846	2,946	1,508	188	151	798	2,804	272	133	57,217
	Q4	107,555	28,325	9,131	4,333	549	523	2,727	7,887	1,079	525	162,634
2024	Jan	24,587	7,718	2,419	1,248	109	151	641	1,819	292	183	39,167
	Feb	26,965	8,169	2,676	1,233	147	114	407	2,049	369	212	42,341
	Mar	28,681	8,550	2,593	1,278	182	141	297	2,156	343	244	44,465
	Q1	80,233	24,437	7,688	3,759	438	406	1,345	6,024	1,004	639	125,973
	Apr	29,632	8,756	3,070	1,243	145	131	318	2,214	276	156	45,941
	May	33,854	9,247	3,234	1,405	153	131	345	2,438	372	169	51,348
	Jun	30,494	8,336	2,880	1,224	149	152	341	2,183	346	140	46,245
	Q2	93,980	26,339	9,184	3,872	447	414	1,004	6,835	994	465	143,534
	Jul	35,540	9,597	3,270	1,500	200	188	444	2,668	336	263	54,006
	Aug	36,008	9,699	3,382	1,472	193	158	532	2,921	391	235	54,991
	Sep	33,317	9,162	3,019	1,382	200	153	557	2,704	426	208	51,128
	Q3	104,865	28,458	9,671	4,354	593	499	1,533	8,293	1,153	706	160,125
	Oct	31,383	8,754	2,982	1,248	149	175	614	2,425	412	237	48,379
	Nov	38,385	9,584	3,141	1,385	221	143	815	2,794	410	176	57,054
	Dec	40,114	10,132	2,853	1,471	191	134	916	2,775	304	190	59,080
	Q4	109,882	28,470	8,976	4,104	561	452	2,345	7,994	1,126	603	164,513
2025	Jan	26,492	8,083	2,613	1,219	119	181	743	1,959	334	169	41,912
	Feb	22,250	6,708	2,251	978	123	76	348	1,612	322	200	34,868
	Mar	29,098	8,771	2,901	1,344	190	110	434	2,165	380	250	45,643
	Q1	77,840	23,562	7,765	3,541	432	367	1,525	5,736	1,036	619	122,423
	Apr	19,878	5,609	1,943	971	118	101	218	1,622	199	149	30,808
	May	44,003	12,502	3,859	1,780	188	199	470	3,032	410	307	66,750
	Jun	34,252	9,371	3,201	1,380	186	165	390	2,578	429	199	52,151

TABLE 8: Motor Vehicles Licence Renewals by Body Type and Month of Renewal, Jan 2022 - Dec 2025

Year/Quarter		Motor Vehicle Body Type										Total
		Passenger Cars	Vans	Trucks	Mini Buses	Buses	Motor Cycles	Tractors	Trailers	Horses/Tankers	Others	
2025	Q2	98,133	27,482	9,003	4,131	492	465	1,078	7,232	1,038	655	149,709
	Jul	34,454	9,520	3,313	1,377	182	152	392	2,698	378	246	52,712
	Aug	32,810	9,075	3,087	1,297	195	176	422	2,595	411	226	50,294
	Sep	34,037	9,098	3,013	1,304	193	136	505	2,713	425	230	51,654
	Q3	101,301	27,693	9,413	3,978	570	464	1,319	8,006	1,214	702	154,660
	Oct	36,231	9,936	3,253	1,450	167	160	683	2,935	448	219	55,482
	Nov	34,050	8,817	2,621	1,169	164	188	724	2,610	417	165	50,925
	Dec	42,757	10,521	3,097	1,475	188	104	928	3,187	347	175	62,779
	Q4	113,038	29,274	8,971	4,094	519	452	2,335	8,732	1,212	559	169,186

TABLE 9: Motor Vehicles Licence Renewals by Body Type and Make of Vehicle, Q4 2025

Make	Motor Vehicle Body Type										Total	Percent of Total
	Passenger Cars	Vans	Trucks	Mini Buses	Buses	Motor cycles	Tractors	Trailers	Tankers/ Horses	Others		
Audi	3,299	-	-	-	-	-	-	-	-	-	3,299	1.9
BMW	4,812	-	-	-	-	19	-	-	-	-	4,831	2.9
Chevrolet	519	287	1	-	-	-	-	-	-	-	807	0.5
Chrysler	51	-	-	-	-	-	-	-	-	-	51	0.0
Daewoo	13	-	-	-	-	-	-	-	-	1	14	0.0
Dodge	107	9	2	-	-	-	-	-	-	-	118	0.1
Ford	691	2,510	10	14	1	-	206	-	-	-	3,432	2.0
Hino	-	3	607	3	27	-	-	-	5	4	649	0.4
Home-made	-	-	-	-	-	-	-	3,057	1	-	3,058	1.8
Honda	14,838	2	7	-	-	122	-	1	-	-	14,970	8.8
Hyundai	684	48	74	14	4	-	-	-	-	-	824	0.5
Isuzu	75	2,812	191	10	12	-	-	-	9	4	3,113	1.8
Iveco	-	6	20	19	39	-	-	-	6	1	91	0.1
Jeep	737	19	-	-	-	-	-	-	-	-	756	0.4
Kia	548	31	89	-	-	-	-	-	-	-	668	0.4
Land Rover	804	269	-	-	-	-	-	-	-	-	1,073	0.6
Lexus	919	-	-	-	-	-	-	-	-	-	919	0.5
Mahindra	26	177	3	-	-	1	5	-	-	-	212	0.1
MAN	-	1	130	-	12	-	4	-	73	3	223	0.1
Massey Ferguson	-	-	-	-	-	-	1,218	-	-	-	1,218	0.7
Mazda	16,175	911	537	204	1	-	-	-	-	-	17,828	10.5
Mercedes Benz	4,920	40	213	78	133	-	5	-	96	13	5,498	3.2
Mitsubishi	935	164	204	29	30	-	-	-	-	1	1,363	0.8
Nissan	3,947	3,916	1,394	457	39	-	-	-	30	6	9,789	5.8
Opel	245	190	-	-	-	-	-	-	-	-	435	0.3
Peugeot	102	10	-	19	-	-	-	-	-	-	131	0.1
Renault	88	8	3	-	-	-	1	-	2	-	102	0.1
Scania	-	1	169	-	107	-	1	-	481	1	760	0.4
Subaru	372	-	-	-	-	-	-	-	-	-	372	0.2
Tata	7	31	181	2	25	-	-	-	2	1	249	0.1
Toyota	44,808	17,136	4,513	3,147	43	-	-	-	9	18	69,674	41.2
Volkswagen	11,021	227	4	86	17	-	-	-	-	-	11,355	6.7
Volvo	1,146	-	130	-	12	-	1	-	222	6	1,517	0.9
Yamaha	-	-	-	-	-	126	-	1	-	-	127	0.1
Other	1,149	466	489	12	17	184	894	5,673	276	500	9,660	5.7
Total	113,038	29,274	8,971	4,094	519	452	2,335	8,732	1,212	559	169,186	100

Source :Department of Road Transport and Safety, Ministry of Transport and Public Works

APPENDIX 2: RAIL TRANSPORT



TABLE 10: Volume Of Goods by Direction (Net tonnes) and Year/Quarter/Month, 2020 - Q4 2025

Year/ Quarter	Imports			Exports			Local Traffic	Botswana Origin	Botswana Total	Transit Traffic	Total Traffic	
	From North	From South	Total Imports	To North	To South	Total Exports						
2020	30,317	393,679	423,996	53,064	419,166	472,230	167,359	639,589	1,063,585	141,396	1,204,981	
2021	21,067	286,130	307,197	59,139	366,389	425,528	192,183	617,711	924,908	129,210	1,054,118	
2022	13,464	254,365	267,829	107,847	305,406	413,253	168,459	581,712	849,541	127,553	977,094	
2023	43,509	259,453	302,962	68,252	286,652	354,904	218,197	573,101	876,063	186,527	1,062,590	
2024	59,834	239,752	299,586	38,473	299,588	338,061	260,087	598,148	897,734	154,231	1,051,965	
2025	59,073	207,200	266,273	35,823	223,417	259,240	208,303	467,543	733,816	83,423	817,239	
2023	Jan	3,694	23,301	26,995	9,771	28,880	38,651	12,155	50,806	77,801	14,288	92,089
	Feb	2,508	12,917	15,425	13,539	18,346	31,885	12,171	44,056	59,481	7,944	67,425
	Mar	4,033	22,883	26,916	8,197	28,704	36,901	13,624	50,525	77,441	18,316	95,757
	Q1	10,235	59,101	69,336	31,507	75,930	107,437	37,950	145,387	214,723	40,548	255,271
	April	4,667	18,187	22,854	4,123	26,869	30,992	19,823	50,815	73,669	18,528	92,197
	May	4,574	22,698	27,272	2,779	33,105	35,884	7,435	43,319	70,591	14,421	85,012
	June	5,032	24,805	29,837	3,612	28,054	31,666	22,291	53,957	83,794	12,534	96,328
	Q2	14,273	65,690	79,963	10,514	88,028	98,542	49,549	148,091	228,054	45,483	273,537
	July	5,752	17,855	23,607	5,704	28,690	34,394	30,469	64,863	88,470	14,169	102,639
	Aug	3,548	26,644	30,192	4,141	16,803	20,944	23,418	44,362	74,554	14,330	88,884
	Sep	2,564	24,096	26,660	6,188	22,367	28,555	22,884	51,439	78,099	12,379	90,478
	Q3	11,864	68,595	80,459	16,033	67,860	83,893	76,771	160,664	241,123	40,878	282,001
	Oct	4,687	25,478	30,165	1,409	25,793	27,202	19,758	46,960	77,125	24,486	101,611
	Nov	1,312	23,699	25,011	3,803	21,719	25,522	17,382	42,904	67,915	17,987	85,902
	Dec	1,138	16,890	18,028	4,986	7,322	12,308	16,787	29,095	47,123	17,145	64,268
	Q4	7,137	66,067	73,204	10,198	54,834	65,032	53,927	118,959	192,163	59,618	251,781
2024	Jan	1,886	17,147	19,033	2,797	25,374	28,171	22,862	51,033	70,066	21,485	91,551
	Feb	306	15,114	15,420	1,819	17,373	19,192	37,088	56,280	71,700	20,708	92,408
	Mar	1,579	18,006	19,585	2,895	23,419	26,314	20,096	46,410	65,995	18,293	84,288
	Q1	3,771	50,267	54,038	7,511	66,166	73,677	80,046	153,723	207,761	60,486	268,247
	April	4,493	22,320	26,813	4,537	22,064	26,601	19,034	45,635	72,448	6,740	79,188
	May	5,390	25,340	30,730	2,138	34,031	36,169	20,561	56,730	87,460	8,969	96,429
	June	5,632	25,525	31,157	2,300	36,841	39,141	18,754	57,895	89,052	10,012	99,064
	Q2	15,515	73,185	88,700	8,975	92,936	101,911	58,349	160,260	248,960	25,721	274,681
	July	7,835	22,710	30,545	2,530	22,048	24,578	18,623	43,201	73,746	6,833	80,579
	Aug	7,544	19,390	26,934	3,429	22,879	26,308	24,516	50,824	77,758	11,949	89,707
	Sep	8,521	16,868	25,389	3,928	23,165	27,093	18,389	45,482	70,871	8,720	79,591
	Q3	23,900	58,968	82,868	9,887	68,092	77,979	61,528	139,507	222,375	27,502	249,877
	Oct	7,622	19,038	26,660	6,627	24,695	31,322	21,715	53,037	79,697	14,528	94,225
	Nov	1,784	18,145	19,929	3,886	27,815	31,701	19,208	50,909	70,838	15,023	85,861
	Dec	7,242	20,149	27,391	1,587	19,884	21,471	19,241	40,712	68,103	10,971	79,074
	Q4	16,648	57,332	73,980	12,100	72,394	84,494	60,164	144,658	218,638	40,522	259,160

TABLE 10 CONT'D: Volume Of Goods by Direction (Net tonnes) and Year/Quarter/Month, 2020 - Q4 2025

Year/ Quarter		Imports			Exports			Local Traffic	Botswana Origin	Botswana Total	Transit Traffic	Total Traffic
		From North	From South	Total Imports	To North	To South	Total Exports					
2025	Jan	1,971	16,626	18,597	2,261	18,424	20,685	11,976	32,661	51,258	6,894	58,152
	Feb	8,163	14,671	22,834	3,120	13,317	16,437	12,599	29,036	51,870	8,835	60,705
	Mar	4,472	18,831	23,303	4,277	22,319	26,596	18,163	44,759	68,062	9,718	77,780
	Q1	14,606	50,128	64,734	9,658	54,060	63,718	42,738	106,456	171,190	25,447	196,637
	Apr	6,857	17,263	24,120	3,350	17,140	20,490	12,920	33,410	57,530	259	57,789
	May	3,399	23,478	26,877	5,116	19,099	24,215	20,963	45,178	72,055	7,159	79,214
	June	3,316	21,953	25,269	2,971	23,295	26,266	18,116	44,382	69,651	8,200	77,851
	Q2	13,572	62,694	76,266	11,437	59,534	70,971	51,999	122,970	199,236	15,618	214,854
	July	7,835	22,709	30,544	2,530	22,048	24,578	18,623	43,201	73,745	4,670	78,415
	Aug	9,204	20,270	29,474	3,429	22,879	26,308	24,516	50,824	80,298	11,949	92,247
	Sep	4,683	16,027	20,710	2,358	15,521	17,879	22,564	40,443	61,153	10,252	71,405
	Q3	21,722	59,006	80,728	8,317	60,448	68,765	65,703	134,468	215,196	26,871	242,067
	Oct	1,196	10,418	11,614	3,265	14,427	17,692	21,176	38,868	50,482	6,323	56,805
	Nov	2,773	15,602	18,375	1,702	17,181	18,883	12,991	31,874	50,249	1,983	52,232
	Dec	5,204	9,352	14,556	1,444	17,767	19,211	13,696	32,907	47,463	7,181	54,644
	Q4	9,173	35,372	44,545	6,411	49,375	55,786	47,863	103,649	148,194	15,487	163,681

SOURCE: Botswana Railways

TABLE 11: Revenue Generated by Direction and Year/Quarter/Month ('000 Pula), 2020 - Q4 2025

Year/ Quarter	Imports			Exports			Local Traffic	Botswana Origin	Botswana Total	Transit Traffic	Total Traffic	
	From North	From South	Total Imports	To North	To South	Total Exports						
2020	6,235	68,590	74,825	10,199	90,994	101,193	35,523	136,716	211,541	31,965	243,506	
2021	4,762	37,814	42,576	11,560	81,807	93,367	38,975	132,342	174,918	29,545	204,463	
2022	6,492	35,743	42,235	18,952	80,340	99,292	35,237	134,529	176,764	29,700	206,464	
2023	9,461	36,149	45,610	17,180	57,984	75,164	45,499	119,847	160,576	40,183	233,944	
2024	16,191	42,501	58,692	8,591	78,237	86,828	67,624	154,452	213,144	45,109	258,253	
2025	17,071	37,845	54,916	8,044	55,880	63,924	56,025	119,949	174,865	26,098	200,963	
2023	Jan	1,026	3,525	4,551	1,880	8,012	9,892	2,594	12,486	17,037	3,530	20,567
	Feb	636	2,011	2,647	2,562	5,661	8,223	2,610	10,833	13,480	1,953	15,433
	Mar	1,175	3,171	4,346	1,650	7,154	8,804	2,994	11,798	16,144	4,422	20,566
	Q1	2,837	8,707	11,544	6,092	20,827	26,919	8,198	35,117	46,661	9,905	56,566
	Apr	3,959	2,590	6,549	482	4,683	5,165	2,021	7,186	13,735	2,833	16,568
	May	1,715	2,936	4,651	929	6,565	7,494	4,716	11,281	12,996	4,817	17,813
	Jun	1,415	4,231	5,646	611	7,520	8,131	2,031	9,551	10,966	3,834	14,800
	Q2	1,269	4,881	6,150	816	6,007	6,823	5,499	11,506	12,775	3,221	49,181
	July	1,752	2,988	4,740	1,263	7,833	9,096	7,638	16,734	21,474	3,704	25,178
	Aug	847	4,323	5,170	935	4,545	5,480	5,749	11,229	16,399	3,734	20,133
	Sep	520	3,639	4,159	1,379	5,829	7,208	5,777	12,985	17,144	3,430	20,574
	Q3	3,119	10,950	14,069	3,577	18,207	21,784	19,164	40,948	55,017	10,868	65,885
	Oct	1,306	4,109	5,415	1,409	6,405	7,814	4,684	12,498	17,913	6,677	24,590
	Nov	327	4,002	4,329	3,803	5,221	9,024	4,032	13,056	17,385	4,902	22,287
	Dec	603	3,500	4,103	1,483	1,317	2,800	3,922	6,722	10,825	4,610	15,435
	Q4	2,236	11,611	13,847	6,695	12,943	19,638	12,638	32,276	46,123	16,189	62,312
2024	Jan	559	3,014	3,573	599	6,972	7,571	5,655	13,226	16,799	5,831	22,630
	Feb	90	2,609	2,699	406	4,048	4,454	9,588	14,042	16,741	5,580	22,321
	Mar	462	3,190	3,652	646	5,825	6,471	4,959	11,430	15,082	4,981	20,063
	Q1	1,111	8,813	9,924	1,651	16,845	18,496	20,202	38,698	48,622	16,392	65,014
	April	1,250	3,917	5,167	1,042	6,248	7,290	4,849	12,139	17,306	2,051	19,357
	May	1,340	4,101	5,441	476	8,711	9,187	5,260	14,447	19,888	2,806	22,694
	June	1,510	4,132	5,642	550	9,091	9,641	5,037	14,678	20,320	3,071	23,391
	Q2	4,100	12,150	16,250	2,068	24,050	26,118	15,146	41,264	57,514	7,928	65,442
	July	2,153	3,888	6,041	552	5,775	6,327	4,662	10,989	17,030	2,119	19,149
	Aug	2,002	3,869	5,871	740	6,137	6,877	6,564	13,441	19,312	3,691	23,003
	Sep	2,238	3,164	5,402	909	6,465	7,374	4,764	12,138	17,540	2,651	20,191
	Q3	6,393	10,921	17,314	2,201	18,377	20,578	15,990	36,568	53,882	8,461	62,343
	Oct	2,009	3,883	5,892	1,453	6,426	7,879	5,754	13,633	19,525	4,405	23,930
	Nov	575	3,304	3,879	856	7,632	8,488	5,333	13,821	17,700	4,589	22,289
	Dec	2,003	3,430	5,433	362	4,907	5,269	5,199	10,468	15,901	3,334	19,235
	Q4	4,587	10,617	15,204	2,671	18,965	21,636	16,286	37,922	53,126	12,328	65,454

**TABLE 11 CONT'D: Revenue Generated by Direction and Year/Quarter/Month
(’000 Pula), 2020 - Q4 2025**

Year/ Quarter		Imports			Exports			Local Traffic	Botswana Origin	Botswana Total	Transit Traffic	Total Traffic
		From North	From South	Total Imports	To North	To South	Total Exports					
2025	Jan	512	2,615	3,127	470	5,059	5,529	3,242	8,771	11,898	2,111	14,009
	Feb	2,166	2,738	4,904	668	2,798	3,466	3,391	6,857	11,761	2,544	14,305
	Mar	1,252	3,670	4,922	889	5,518	6,407	4,934	11,341	16,263	2,896	19,159
	Q1	3,930	9,023	12,953	2,027	13,375	15,402	11,567	26,969	39,922	7,551	47,473
	Apr	2,652	3,011	5,663	772	4,505	5,277	3,219	8,496	14,159	86	14,245
	May	983	4,653	5,636	1,236	4,523	5,759	5,461	11,220	16,856	2,297	19,153
	June	937	4,264	5,201	730	6,263	6,993	4,999	11,992	17,193	2,562	19,755
	Q2	4,572	11,928	16,500	2,738	15,291	18,029	13,679	31,708	48,208	4,945	53,153
	July	2,153	3,888	6,041	552	5,775	6,327	4,662	10,989	17,030	1,456	18,486
	Aug	2,411	4,149	6,560	740	6,137	6,877	6,565	13,442	20,002	3,691	23,693
	Sep	1,335	2,936	4,271	533	3,687	4,220	6,429	10,649	14,920	3,369	18,289
	Q3	5,899	10,973	16,872	1,825	15,599	17,424	17,656	35,080	51,952	8,516	60,468
	Oct	304	2,209	2,513	766	3,311	4,077	5,748	9,825	12,338	2,070	14,408
	Nov	705	2,495	3,200	389	3,959	4,348	3,404	7,752	10,952	652	11,604
	Dec	1,661	1,217	2,878	299	4,345	4,644	3,971	8,615	11,493	2,364	13,857
	Q4	2,670	5,921	8,591	1,454	11,615	13,069	13,123	26,192	34,783	5,086	39,869

Source: Botswana Railways



APPENDIX 3: **AIR TRANSPORT**

TABLE 12: Aircraft Movements by Quarter and Type of Movement, Q1 2022 - Q4 2025

Year/ Quarter		Type of Movement		Total
		International Movements	Domestic Movements	
Number				
2022	Q1	2,197	6,605	8,802
	Q2	3,699	14,203	17,902
	Q3	4,275	16,668	20,943
	Q4	3,302	12,919	16,221
2023	Q1	2,756	9,458	12,214
	Q2	3,848	15,709	19,557
	Q3	4,682	17,224	21,906
	Q4	3,709	12,514	16,223
2024	Q1	3,061	9,448	12,509
	Q2	3,900	16,812	20,712
	Q3	4,452	19,259	23,711
	Q4	3,667	14,039	17,706
2025	Q1	3,184	10,561	13,745
	Q2	4,684	19,219	23,903
	Q3	4,918	21,535	26,453
	Q4	3,924	15,042	18,966
Percent of Total				
2022	Q1	25.0	75.0	100
	Q2	20.7	79.3	100
	Q3	20.4	79.6	100
	Q4	20.4	79.6	100
2023	Q1	22.6	77.4	100
	Q2	19.7	80.3	100
	Q3	21.4	78.6	100
	Q4	22.9	77.1	100
2024	Q1	24.5	75.5	100
	Q2	18.8	81.2	100
	Q3	18.8	81.2	100
	Q4	20.7	79.3	100
2025	Q1	23.2	76.8	100
	Q2	19.6	80.4	100
	Q3	18.6	81.4	100
	Q4	20.7	79.3	100

TABLE 12 CONT'D: Aircraft Movements by Quarter and Type of Movement, Q1 2022 - Q4 2025

Year/ Quarter		Type of Movement		Total
		International Movements	Domestic Movements	
2025	Q1	23.2	76.8	100
	Q2	19.6	80.4	100
	Q3	18.6	81.4	100
	Q4	20.7	79.3	100
Quarter - to - Quarter Percentage Change				
2022	Q1	(10.5)	(24.0)	(21.1)
	Q2	68.4	115.0	103.4
	Q3	15.6	17.4	17.0
	Q4	(22.8)	(22.5)	(22.5)
2023	Q1	(16.5)	(26.8)	(24.7)
	Q2	39.6	66.1	60.1
	Q3	21.7	9.6	12.0
	Q4	(20.8)	(27.3)	(25.9)
2024	Q1	(17.5)	(24.5)	(22.9)
	Q2	27.4	77.9	65.6
	Q3	14.2	14.6	14.5
	Q4	(17.6)	(27.1)	(25.3)
2025	Q1	(13.2)	(24.8)	(22.4)
	Q2	47.1	82.0	73.9
	Q3	5.0	12.1	10.7
	Q4	(20.2)	(30.2)	(28.3)

Source: Civil Aviation Authority Botswana

TABLE 13A : Aircraft Movements by Type of Flight, Q4 2025

Type of Flight	Type of Movement		
	International	Domestic	Total
	Number		
Scheduled Arrival	1,421	452	1,873
Scheduled Departure	1,414	451	1,865
Non Scheduled Arrival	491	6,327	6,818
Non Scheduled Departure	545	6,431	6,976
Private Arrival	29	162	191
Private Departure	24	143	167
Scenic Flights	-	1,076	1,076
Total	3,924	15,042	18,966
	Percent of Total		
Scheduled Arrival	36.2	3.0	9.9
Scheduled Departure	36.0	3.0	9.8
Non Scheduled Arrival	12.5	42.1	35.9
Non Scheduled Departure	13.9	42.8	36.8
Private Arrival	0.7	1.1	1.0
Private Departure	0.6	1.0	0.9
Scenic Flights	-	7.2	5.7
Total	100	100	100
	Percent of Total		
Scheduled Arrival	75.9	24.1	100
Scheduled Departure	75.8	24.2	100
Non Scheduled Arrival	7.2	92.8	100
Non Scheduled Departure	7.8	92.2	100
Private Arrival	15.2	84.8	100
Private Departure	14.4	85.6	100
Scenic Flights	-	100	100
Total	20.7	79.3	100

Source: Civil Aviation Authority Botswana

TABLE 14: Aircraft Movements by Airport and Quarter, Q1 2022 - Q4 2025

Airport	2023					2024					2025				
	Q1	Q2	Q3	Q4	Total	Q1	Q2	Q3	Q4	Total	Q1	Q2	Q3	Q4	Total
SSKIA	2,427	2,604	2,823	2,609	10,463	2,512	2,709	2,635	2,736	10,592	2,675	3,229	3,089	2,865	11,858
Maun	7,874	13,339	14,880	10,654	46,747	7,983	13,980	16,590	12,100	50,653	9,083	16,669	18,912	13,305	57,969
Kasane	1,543	3,162	3,776	2,561	11,042	1,628	3,608	3,993	2,495	11,724	1,722	3,662	4,172	2,546	12,102
Phillip Matante	298	374	385	365	1,422	350	381	447	338	1,516	238	311	252	222	1,023
Selebi Phikwe	18	29	14	10	71	10	12	14	12	48	12	8	14	10	44
Ghanzi	54	49	28	24	155	26	22	32	25	105	15	24	14	18	71
Total	12,214	19,557	21,906	16,223	69,900	12,509	20,712	23,711	17,706	74,638	13,745	23,903	26,453	18,966	83,067
SSKIA	19.9	13.3	12.9	16.1	15.0	20.1	13.1	11.1	15.5	14.2	19.5	13.5	11.7	15.1	14.3
Maun	64.5	68.2	67.9	65.7	66.9	63.8	67.5	70.0	68.3	67.9	66.1	69.7	71.5	70.2	69.8
Kasane	12.6	16.2	17.2	15.8	15.8	13.0	17.4	16.8	14.1	15.7	12.5	15.3	15.8	13.4	14.6
Phillip Matante	2.4	1.9	1.8	2.2	2.0	2.8	1.8	1.9	1.9	2.0	1.7	1.3	1.0	1.2	1.2
Selebi Phikwe	0.1	0.1	0.1	0.1	0.1	0.1	0.1	0.1	0.1	0.1	0.1	0.03	0.1	0.1	0.1
Ghanzi	0.4	0.3	0.1	0.1	0.2	0.2	0.1	0.1	0.1	0.1	0.1	0.1	0.1	0.1	0.1
Total	100	100	100	100	100	100	100	100	100	100	100	100	100	100	100
SSKIA	23.2	24.9	27.0	24.9	100	23.7	25.6	24.9	25.8	100	22.6	27.2	26.0	24.2	100
Maun	16.8	28.5	31.8	22.8	100	15.8	27.6	32.8	23.9	100	15.7	28.8	32.6	23.0	100
Kasane	14.0	28.6	34.2	23.2	100	13.9	30.8	34.1	21.3	100	14.2	30.3	34.5	21.0	100
Phillip Matante	21.0	26.3	27.1	25.7	100	23.1	25.1	29.5	22.3	100	23.3	30.4	24.6	21.7	100
Selebi Phikwe	25.4	40.8	19.7	14.1	100	20.8	25.0	29.2	25.0	100	27.3	18.2	31.8	22.7	100
Ghanzi	34.8	31.6	18.1	15.5	100	24.8	21.0	30.5	23.8	100	21.1	33.8	19.7	25.4	100
Total	17.5	28.0	31.3	23.2	100	16.8	27.7	31.8	23.7	100	16.5	28.8	31.8	22.8	100

Source: Civil Aviation Authority Botswana

TABLE 15: Air Passenger Traffic by Quarter and Type of Movement Q1 2022- Q4 2025

Month/ Quarter		Type of Movement		Total
		International	Domestic	
Number				
2022	Q1	54,128	43,601	97,729
	Q2	90,031	82,859	172,890
	Q3	112,525	95,406	207,931
	Q4	95,194	78,397	173,591
2023	Q1	78,667	62,008	140,675
	Q2	102,430	92,174	194,604
	Q3	125,292	105,104	230,396
	Q4	113,160	84,974	198,134
2024	Q1	92,885	68,857	161,742
	Q2	123,180	101,305	224,485
	Q3	145,864	109,244	255,108
	Q4	126,659	84,156	210,815
2025	Q1	104,441	64,492	168,933
	Q2	144,764	99,660	244,424
	Q3	164,582	108,978	273,560
	Q4	150,947	85,880	236,827
Percent of Total				
2022	Q1	55.4	44.6	100
	Q2	52.1	47.9	100
	Q3	54.1	45.9	100
	Q4	54.8	45.2	100
2023	Q1	55.9	44.1	100
	Q2	52.6	47.4	100
	Q3	54.4	45.6	100
	Q4	57.1	42.9	100
2024	Q1	57.4	42.6	100
	Q2	54.9	45.1	100
	Q3	57.2	42.8	100
	Q4	60.1	39.9	100
2025	Q1	61.8	38.2	100
	Q2	59.2	40.8	100
	Q3	60.2	39.8	100
	Q4	63.7	36.3	100

TABLE 15 CONT'D: Air Passenger Traffic by Quarter and Type of Movement Q1 2022- Q4 2025

Month/ Quarter		Type of Movement		Total
		International	Domestic	
		Quarter-to-Quarter Percentage Change		
2022	Q1	3.4	(24.0)	(10.9)
	Q2	66.3	90.0	76.9
	Q3	25.0	15.1	20.3
	Q4	(15.4)	(17.8)	(16.5)
2023	Q1	(17.4)	(20.9)	(19.0)
	Q2	30.2	48.6	38.3
	Q3	22.3	14.0	18.4
	Q4	(9.7)	(19.2)	(14.0)
2024	Q1	(17.9)	(19.0)	(18.4)
	Q2	32.6	47.1	38.8
	Q3	18.4	7.8	13.6
	Q4	(13.2)	(23.0)	(17.4)
2025	Q1	(17.5)	(23.4)	(19.9)
	Q2	38.6	54.5	44.7
	Q3	13.7	9.3	11.9
	Q4	(8.3)	(21.2)	(13.4)

Source: Civil Aviation Authority Botswana

TABLE 16: Air Passenger Movements By Type of Flight, Q1 2022 - Q4 2025

Year/ Quarter		Type of Flight				Total
		Scheduled	Non-Scheduled	Private	Scenic	
Number						
2022	Q1	77,969	18,128	780	852	97,729
	Q2	123,593	45,802	890	2,605	172,890
	Q3	147,273	54,204	1,462	4,992	207,931
	Q4	128,978	40,276	1,434	2,903	173,591
2023	Q1	108,972	28,616	1,626	1,461	140,675
	Q2	135,406	54,629	1,348	3,221	194,604
	Q3	160,399	62,787	1,468	5,742	230,396
	Q4	149,941	43,061	1,775	3,357	198,134
2024	Q1	128,142	30,560	1,495	1,545	161,742
	Q2	162,319	56,105	2,114	3,947	224,485
	Q3	183,281	64,383	880	6,564	255,108
	Q4	160,519	45,549	1,317	3,430	210,815
2025	Q1	133,225	32,583	1,580	1,545	168,933
	Q2	176,074	62,649	1,460	4,241	244,424
	Q3	195,593	69,320	1,589	7,058	273,560
	Q4	184,646	47,711	1,179	3,291	236,827
Percent of Total						
2022	Q1	79.8	18.5	0.8	0.9	100
	Q2	71.5	26.5	0.5	1.5	100
	Q3	70.8	26.1	0.7	2.4	100
	Q4	74.3	23.2	0.8	1.7	100
2023	Q1	77.5	20.3	1.2	1.0	100
	Q2	69.6	28.1	0.7	1.7	100
	Q3	69.6	27.3	0.6	2.5	100
	Q4	75.7	21.7	0.9	1.7	100
2024	Q1	79.2	18.9	0.9	1.0	100
	Q2	72.3	25.0	0.9	1.8	100
	Q3	71.8	25.2	0.3	2.6	100
	Q4	76.1	21.6	0.6	1.6	100
2025	Q1	78.9	19.3	0.9	0.9	100
	Q2	72.0	25.6	0.6	1.7	100
	Q3	71.5	25.3	0.6	2.6	100
	Q4	78.0	20.1	0.5	1.4	100

TABLE 16 CONT'D: Air Passenger Movements By Type of Flight, Q1 2022 - Q4 2025

Year/ Quarter		Type of Flight				
		Scheduled	Non-Scheduled	Private	Scenic	Total
		Quarter-to-Quarter Percentage Change				
2022	Q1	(7.7)	(21.0)	0.6	(44.7)	(10.9)
	Q2	58.5	152.7	14.1	205.8	76.9
	Q3	19.2	18.3	64.3	91.6	20.3
	Q4	(12.4)	(25.7)	(1.9)	(41.8)	(16.5)
2023	Q1	(15.5)	(29.0)	13.4	(49.7)	(19.0)
	Q2	24.3	90.9	(17.1)	120.5	38.3
	Q3	18.5	14.9	8.9	78.3	18.4
	Q4	(6.5)	(31.4)	20.9	(41.5)	(14.0)
2024	Q1	(14.5)	(29.0)	(15.8)	(54.0)	(18.4)
	Q2	26.7	83.6	41.4	155.5	38.8
	Q3	12.9	14.8	(58.4)	66.3	13.6
	Q4	(12.4)	(29.3)	49.7	(47.7)	(17.4)
2025	Q1	(17.0)	(28.5)	20.0	(55.0)	(19.9)
	Q2	32.2	92.3	(7.6)	174.5	44.7
	Q3	11.1	10.6	8.8	66.4	11.9
	Q4	(5.6)	(31.2)	(25.8)	(53.4)	(13.4)

Source: Civil Aviation Authority Botswana

TABLE 17: Air Passenger Movement by Airport and Type of Flight, Q4 2025

Airport	Type of Flight					Q3 Total	Quarter- to-Quarter Change
	Scheduled	Non Scheduled	Private	Scenic	Total		
SSKIA	120,533	1,477	868	-	122,878	117,687	4.4
Maun	46,601	35,382	172	3,182	85,337	114,420	(25.4)
Kasane	14,058	10,422	20	109	24,609	37,302	(34.0)
Phillip Matante	3,454	400	54	-	3,908	4,044	(3.4)
Selebi Phikwe	-	-	35	-	35	56	(37.5)
Ghanzi	-	30	30	-	60	51	17.6
Total	184,646	47,711	1,179	3,291	236,827	273,560	(13.4)
Percent of Total							
SSKIA	65.3	3.1	73.6	-	51.9	43.0	
Maun	25.2	74.2	14.6	96.7	36.0	41.8	
Kasane	7.6	21.8	1.7	3.3	10.4	13.6	
Phillip Matante	1.9	0.8	4.6	-	1.7	1.5	
Selebi Phikwe	-	-	3.0	-	0.01	0.02	
Ghanzi	-	0.1	2.5	-	0.03	0.02	
Total	100	100	100	100	100	100	
Percent of Total							
SSKIA	98.1	1.2	0.7	-	100		
Maun	54.6	41.5	0.2	3.7	100		
Kasane	57.1	42.4	0.1	0.4	100		
Phillip Matante	88.4	10.2	1.4	-	100		
Selebi Phikwe	-	-	100	-	100		
Ghanzi	-	50.0	50.0	-	100		
Total	78.0	20.1	0.5	1.4	100		

Source: Civil Aviation Authority of Botswana

Explanatory Notes

1. Motor Vehicle Registrations

Motor vehicle registration deals with licensing of motor vehicles with respect to those registered for the first time and license renewal of pre-existing ones. First registrations are done at the Department of Road Transport and Safety (DRTS) only, while license renewals are done at DRTS offices, Post Offices country wide and some stores like Sefalana Cash and Carry. First Registration could be for a new, used or rebuilt vehicle.

Botswana Origin: Brand new vehicles (Botswana origin) are new vehicles bought from local dealerships e.g. Motor Centre. There are also trailers made locally in the country.

2. Rail Transport

Rail Transport covers passengers and goods transported by rail and the revenue generated from the conveyance of these goods and passengers. Botswana Origin is comprised of Total Exports and Local Traffic goods, while Botswana Total is an addition of Total Imports and Botswana Origin goods. Total Traffic is made up of Total Exports, Total Imports, Local Traffic and Transit Traffic. Local traffic refers to goods transported within Botswana and Transit Traffic refers to goods transported through Botswana to other countries.

3. Air Transport

Air transport section covers the movement of aircrafts and air passengers both locally and internationally.

International movements refer to movements made by aircrafts and passengers to destinations outside Botswana whilst domestic movements account for travels made within Botswana. The movements are further categorized into scheduled, non-scheduled and private.

Scheduled aircraft movements refer to commercial airlines operating on a time table while non-scheduled aircraft movements refer to commercial aircrafts which operate as and when needed. Private aircraft movements refer to non-commercial individual aircrafts. Scenic aircraft movements refer to airlines that focus on viewing wildlife and surrounding natures.

N.B Francistown International airport has been renamed Phillip Matante International Airport





Private Bag 0024, Gaborone
Tel: 3671300
Toll Free: 0800 600 200

Four Thirty Square, Plot 54350
PG Matante Road,
CBD, Gaborone

E-mail: info@statsbots.org.bw
Website: www.statsbots.org.bw



STATISTICS BOTSWANA