

STATISTICS BOTSWANA

GROSS DOMESTIC PRODUCT

First Quarter 2017

Copyrights © Statistics Botswana 2017



Table of Contents

1.	Introduction	3
2.	Gross Domestic Product	4
2.1	Revisions in this Release	4
3.	First Quarter GDP	4
3.2	Components of GDP by Type of Expenditure	6
Figure 1:	Real GDP growth rates (over four quarters)	5
Figure 2:	Components of Gross Domestic Expenditure at 2006 prices	6

1. Introduction

The statistical release contains the first quarter Gross Domestic Product estimates of 2017 by economic activity and components of final demand at current and constant prices.

Botswana's National Accounts are compiled according to the 1993 System of National Accounts (1993 SNA). The accounts presented in this publication adhere to the enhanced General Data Dissemination System (e-GDDS) of the International Monetary Fund (IMF), which sets out standards on coverage, periodicity and timeliness of data.

The estimates are provisional and subject to change. First estimates are normally based on limited data and hence cannot be precise and absolute. The figures are revised after receiving finalized or audited data from companies in which some differences and inconsistencies in the previously published data may be observed.

These estimates are not seasonally adjusted hence the variations may differ depending on the quarters.

Statistics Botswana acknowledges and appreciates the contribution of all stakeholders in the production of this report.

For more information and further enquiries, contact the Directorate of Stakeholder Relations at 3671300 or info@statsbots.org.bw. All Statistics Botswana outputs/publications are available on the website at www.statsbots.org.bw and at the Statistics Botswana Information Resource Center (Head-Office, Gaborone).



Anna Majelantle
Statistician General
June 2017

2. Gross Domestic Product

2.1 Revisions in this release

There were no revisions made to the quarterly Gross Domestic Product (GDP) estimates published in March 2017.

2.2 Key figures

	Real Gross Domestic Product		Total Final Consumption		Gross Fixed Capital Formation	
	Percentage Change					
	Quarter-on-Quarter	Year-on-Year	Quarter-on-Quarter	Year-on-Year	Quarter-on-Quarter	Year-on-Year
First quarter 2013	3.5	9.8	1.5	32.4	-7.5	-1.8
Second quarter 2013	2.1	12.6	-5.4	13.2	11.3	9.6
Third quarter 2013	-0.1	13.4	-2.9	2.9	-4.0	-1.4
Fourth quarter 2013	3.9	9.7	8.4	1.1	3.1	1.9
First quarter 2014	-2.5	3.3	2.9	2.4	-0.7	9.3
Second quarter 2014	3.3	4.6	-4.5	3.4	-1.8	-3.5
Third quarter 2014	1.3	6.0	-0.4	6.1	-6.2	-5.7
Fourth quarter 2014	0.6	2.7	5.1	2.8	16.3	6.3
First quarter 2015	-2.4	2.7	2.3	2.2	-6.1	0.5
Second quarter 2015	0.2	-0.3	-3.1	3.6	7.8	10.4
Third quarter 2015	-3.9	-5.4	1.8	6.0	4.0	22.4
Fourth quarter 2015	2.6	-3.5	1.4	2.3	-2.0	3.2
First quarter 2016	3.5	2.3	2.2	2.2	-5.8	3.5
Second quarter 2016	1.7	3.9	-4.9	0.4	11.0	6.6
Third quarter 2016	-1.1	6.9	2.7	1.3	-1.4	1.1
Fourth quarter 2016	0.1	4.2	2.9	2.8	0.3	3.5
First quarter 2017	0.2	0.8	-0.3	0.4	-5.6	3.7

2.3 First quarter GDP

2.3.1 Production Account

The estimated GDP at current prices for the first quarter of 2017 was P43, 647.0 million compared to P43, 657.4 million registered in the fourth quarter of 2016 (See table 1).

The estimated GDP at constant 2006 prices for the first quarter of 2017 was P22, 466.4 million compared to P22, 421.6 million registered in the fourth quarter of 2016 (See table 3).

The domestic economy increased by 0.8 percent in the first quarter of 2017 compared to an increase of 2.3 percent recorded in the same quarter of 2016. The increase was attributed to real value added of Trade, Hotels & Restaurants and Finance & Business Services which increased by 18.7 and 5.4 percent respectively. All other industries recorded positive growths of more than 1.2 percent with the exception of Water & Electricity, Mining and Manufacturing which decreased by 32.2, 28.9 and 0.3 percent respectively (See table 4).

Trade, Hotels & Restaurants growth of 18.7 percent was attributed to the increase in real value added of Wholesalers, Vehicle dealers and Hotels & Restaurants by 76.0, 7.2 and 6.3 percent respectively. Wholesaler's value added increased significantly due to the positive performance realized from downstream diamond industries.

The increase of 5.4 percent in the real value added of the Finance and Business Services industry was mainly due to the rise in the value added of Business Services and Real Estate by 8.4 and 6.2 percent respectively.

The decrease in the real mining value added of 28.9 percent was because of the closure of copper/nickel mines during the fourth quarter of 2016. In the quarter under review, copper/nickel production was zero due to the provisional liquidation of the BCL mine in October 2016. On the other hand, diamond value added decreased by 2.8 percent during the quarter under review because diamond prices continue to be vulnerable to market tremors hence a reduction in diamond production. Soda Ash value added decreased by 41.5 percent because the markets remain restrained due to low demand as some of the industries utilizing the commodity have been affected by the low metal prices. Coal prices also remain depressed and stagnated which continues to negatively impact on the commodity export viability. BCL closure also impacted on the Morupule Colliery Mine production. Other mining value added went down by 22.2 percent mainly due to a decrease in Gold production by 22.5 percent.

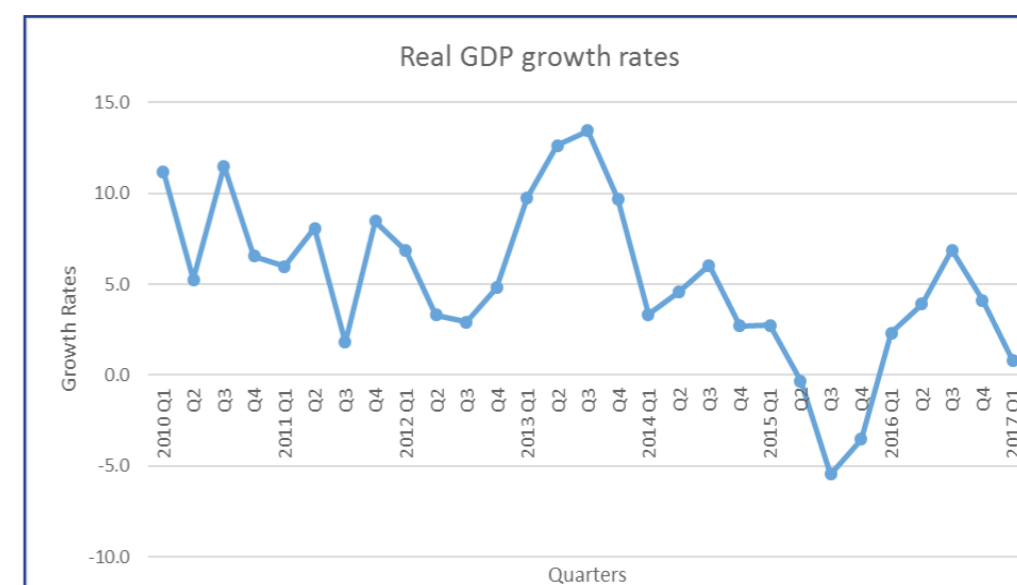
Water and Electricity value added at constant 2006 prices for the first quarter of 2017 was P112.1 million compared to P165.5 million registered in the same quarter in 2016, recording a decrease of 32.2 percent. In the first quarter of 2017, Electricity recorded a negative value added of P46.7 million compared to a positive value added of P77.7 million registered in the fourth quarter of 2016. Electricity value added decreased mainly because of the closure of the BCL mine. Total electricity distribution in kwh went down by 15.1 percent, with distribution to BCL decreasing by 79.1 percent.

In the first quarter of 2017, the real value added of water sector decreased by 7.0 percent compared to an increase of 11.1 percent recorded in the same quarter of the previous year.

The decrease of 0.3 percent in the real value added of the Manufacturing industry was mainly due to the decrease in the real value added of all sub industries except other manufacturing which increased by 2.5 percent.

Non mining GDP increased by 5.6 percent in the first quarter of 2017 compared to 3.7 percent registered in the same quarter of the previous year. The increase was mainly due to Trade, hotels and restaurants particularly the wholesale sub industry.

In the first quarter of 2017, Trade, Hotels and Restaurants was the major contributor to GDP by 20.9 percent while Mining contribution stood at 17.6 percent. Trade, Hotels and Restaurants contribution increased because of the wholesaler's performance which comprises of diamond aggregation processes.



2.3.2 Components of GDP by Type of Expenditure

Total final consumption expenditure recorded an increase of 0.4 percent in the first quarter of 2017, whereas in the same quarter of the previous year it rose by 2.2 percent. Household final consumption increased by 0.4 percent, Government final consumption increased by 0.4 percent and Fixed capital formation increased by 3.7 percent in the quarter under review.

In the case of foreign trade, real exports of goods and services increased by 0.4 percent in the first quarter of 2017 compared to a decrease of 9.5 percent recorded in the same quarter of 2016. Imports of goods and services registered a decrease of 5.2 percent during the quarter under review, compared to 5.7 percent decline realized in the same quarter of the previous year.

Figure 2: Components of Gross Domestic Expenditure at 2006 prices

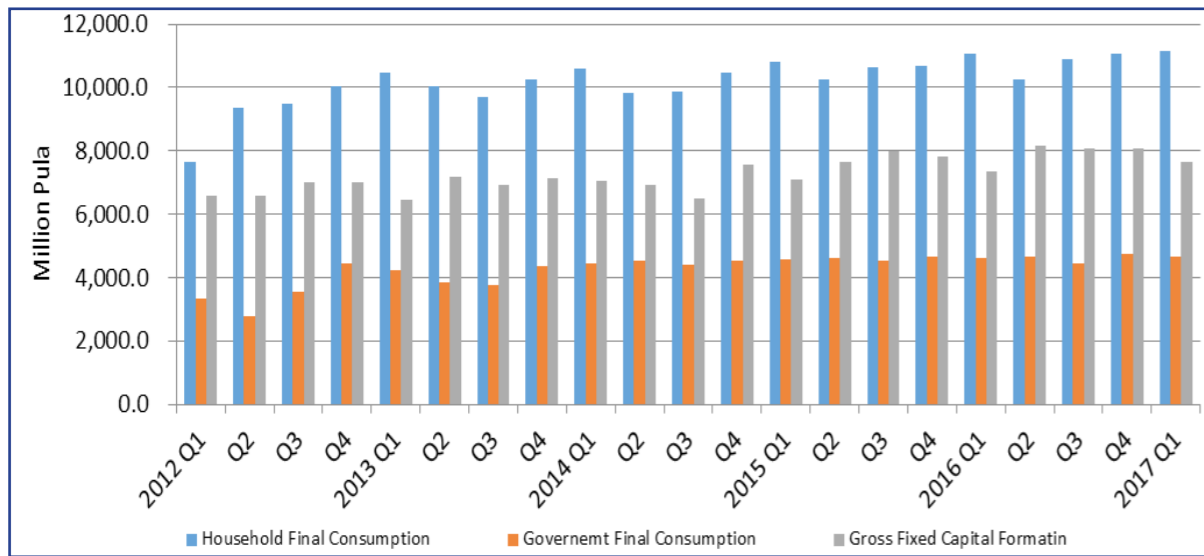


Table A 2: GDP per capita (Pula)

Year	Nominal GDP per capita	Real GDP per capita
1994	7,869.2	22,793.4
1995	8,800.8	23,789.8
1996	10,550.8	24,562.5
1997	11,707.1	25,958.7
1998	12,615.7	25,437.9
1999	15,627.3	27,583.6
2000	17,991.2	27,814.8
2001	19,077.2	27,229.8
2002	20,097.5	28,349.6
2003	21,311.8	29,113.9
2004	23,650.1	29,350.0
2005	28,026.8	30,121.2
2006	32,038.3	32,038.3
2007	35,727.9	34,050.1
2008	39,021.1	35,509.2
2009	37,656.1	32,186.9
2010	43,705.9	34,298.6
2011	52,962.0	35,702.1
2012	54,240.5	36,605.0
2013	59,146.6	39,472.3
2014	66,534.3	39,985.8
2015	66,795.9	39,148.1
2016	76,446.4	40,444.7

Table 4: Percentage Change in Gross Value Added by Kind of Economic Activity at constant 2006 Prices

Calendar year	Agriculture	Mining	Manufacturing	Water & Electricity	Construction	Trade, Hotels & Restaurants	Transport & Communication	Finance & Business Service	General Government	Social & Personal Services	Value Added	Taxes on Import	Other Taxes on products	Subsidies	Total GDP
2005	-2.5	8.3	1.8	-14.1	-1.2	3.8	14.0	1.4	-1.1	18.6	4.4	11.1	-0.9	9.0	4.6
2006	13.3	5.1	20.0	3.0	15.9	27.4	13.8	4.9	-2.2	13.8	8.7	7.1	3.8	12.6	8.4
2007	12.2	-4.8	25.7	-4.9	23.2	15.2	15.4	11.2	5.6	8.2	6.5	24.3	25.6	12.8	8.3
2008	2.0	0.3	-2.6	6.6	0.8	18.0	10.2	11.7	0.2	15.2	5.5	4.1	24.7	7.8	6.2
2009	6.4	-42.4	5.0	-5.2	12.3	3.9	14.8	1.5	2.8	11.3	-9.1	-9.7	20.0	6.5	-7.7
2010	5.8	20.4	3.9	12.0	3.6	9.3	6.4	11.5	7.5	6.2	10.2	-8.1	2.1	-4.2	8.6
2011	0.2	-6.5	11.4	-34.2	23.1	13.8	6.1	7.7	6.3	8.3	6.1	9.5	2.1	-0.7	6.0
2012	-8.5	-5.8	3.7	-27.5	14.4	6.8	10.9	9.1	2.8	10.7	4.5	7.5	1.4	3.1	4.5
2013	1.3	24.2	6.5	67.5	4.1	16.0	7.6	8.7	6.0	8.0	11.8	12.8	2.7	7.3	11.3
2014	-0.4	0.5	0.5	-55.8	3.7	10.7	9.8	2.7	4.6	4.2	4.1	5.3	4.4	3.8	4.1
2015	0.3	-19.6	3.2	7.0	4.0	-3.9	4.5	4.5	3.3	3.6	-2.0	0.6	2.0	3.5	-1.7
2016	-1.0	-3.7	0.8	123.0	4.2	13.5	5.6	3.8	2.0	3.5	4.8	-0.4	0.8	3.2	4.3
2005 Q1	20.9	14.2	-0.8	-14.0	-7.3	-2.9	6.6	0.4	-0.9	14.9	4.6	30.0	-2.2	1.7	5.5
Q2	-21.3	22.0	1.2	-10.7	0.5	-0.3	16.2	2.1	-5.7	19.8	6.9	-10.3	-2.6	8.9	5.4
Q3	7.1	0.1	6.4	-13.9	-2.8	5.2	18.5	2.5	-2.7	20.3	2.1	-10.9	85.1	12.6	3.3
Q4	-8.5	2.5	0.6	-17.2	5.8	13.4	14.8	0.7	5.0	19.6	4.5	41.3	-40.5	12.7	4.2
2006 Q1	26.5	20.4	20.6	1.7	10.3	32.0	16.1	8.7	-4.7	18.0	15.0	-2.0	-14.2	16.0	12.2
Q2	-15.9	5.6	17.0	2.5	11.1	26.7	20.2	9.0	4.5	15.5	9.7	17.6	19.0	13.1	10.4
Q3	16.1	1.2	18.4	4.0	30.5	27.2	7.7	3.7	-1.1	12.8	7.5	44.2	-14.2	11.4	8.2
Q4	35.3	-3.0	23.8	3.9	11.7	24.0	12.1	-1.2	-7.0	9.2	3.5	-17.1	49.1	10.3	3.3
2007 Q1	-2.9	-1.5	24.8	-0.2	16.9	12.9	11.4	14.1	9.8	3.9	7.3	2.3	-5.0	9.4	6.5
Q2	68.3	-3.0	40.6	0.4	25.2	18.5	17.4	12.2	5.4	7.1	9.7	33.5	32.9	12.4	11.9
Q3	8.6	-9.3	24.2	-6.8	10.1	12.3	17.7	11.8	4.8	10.5	3.8	22.4	44.6	14.1	6.3
Q4	-16.7	-4.9	14.8	-12.6	42.9	17.2	15.0	6.8	2.8	11.3	5.6	37.6	36.0	15.2	8.6
2008 Q1	-9.1	4.1	-4.1	-2.5	14.6	17.7	15.8	-3.9	-6.4	19.3	4.4	35.5	27.5	10.9	6.9
Q2	-1.7	2.9	-1.2	1.1	2.7	17.2	8.5	12.6	0.4	12.5	6.1	-2.8	20.7	8.0	6.1
Q3	-3.9	8.2	-1.5	9.1	-1.7	21.0	8.3	8.8	2.3	12.1	7.8	-3.4	27.0	6.6	7.9
Q4	38.7	-13.7	-3.7	19.9	-9.9	16.2	8.6	31.2	4.3	17.2	3.6	-3.8	23.7	6.2	4.1
2009 Q1	23.4	-57.2	15.9	-9.0	7.7	7.1	11.1	15.5	12.0	11.6	-10.7	-15.2	24.1	8.1	-9.5
Q2	-10.8	-40.5	2.0	-4.5	14.3	8.8	11.6	0.9	0.8	14.7	-8.5	-12.0	23.2	7.6	-7.3
Q3	2.9	-46.5	-4.3	-7.4	19.7	4.5	16.9	-3.6	0.3	12.7	-12.0	-9.4	16.2	6.4	-10.4
Q4	17.4	-22.0	7.6	-0.6	7.8	-4.4	19.2	-4.8	-0.5	6.4	-4.8	-2.3	17.8	4.2	-3.4
2010 Q1	-4.8	56.6	-3.9	36.9	-1.4	2.9	7.3	5.5	7.7	5.9	12.2	-2.3	8.9	-7.4	11.2
Q2	20.0	6.8	-1.5	9.1	-6.0	5.2	7.7	13.1	4.4	7.5	6.0	-10.3	8.9	-5.3	5.3
Q3	2.2	32.8	11.2	12.7	4.2	12.2	7.2	14.3	8.3	5.7	14.0	-9.3	-2.1	-3.2	11.5
Q4	6.7	-1.6	10.8	-6.2	18.3	17.3	3.9	13.2	9.8	5.8	8.7	-10.0	-5.2	-1.1	6.5
2011 Q1	-1.2	-4.0	12.9	-36.6	22.9	24.0	9.8	10.1	-0.4	4.3	7.4	-21.7	10.0	11.6	6.0
Q2	-10.3	6.6	7.2	-30.0	25.9	8.4	6.7	4.1	6.5	3.6	6.6	30.6	8.7	-11.2	8.1
Q3	-4.0	-16.1	11.2	-42.4	22.5	7.2	4.1	7.6	2.2	9.0	1.7	23.3	-13.6	3.2	1.8
Q4	19.1	-10.4	14.0	-27.1	21.4	16.4	3.9	9.0	16.3	16.5	8.8	6.7	3.8	-4.9	8.5
2012 Q1	4.4	-2.9	9.9	12.9	20.1	1.6	11.1	6.8	13.7	9.9	6.6	35.4	-8.1	-2.6	6.8
Q2	-7.7	-5.8	6.9	-41.2	21.5	9.9	13.3	9.1	-0.3	14.4	5.4	-13.4	-8.0	11.1	3.3
Q3	-9.5	-23.7	3.6	-22.7	10.0	11.9	10.0	13.4	-0.6	10.4	2.0	-1.2	23.4	2.8	2.9
Q4	-19.0	10.0	-4.5	-59.3	7.6	4.2	9.2	7.3	-0.4	8.3	4.0	20.8	2.2	2.1	4.8
2013 Q1	-5.0	5.0	-0.7	22.3	4.4	13.0	5.3	14.9	9.1	10.9	8.6	29.8	8.9	9.0	9.8
Q2	3.4	30.8	10.2	127.3	4.5	12.1	5.7	9.6	6.9	8.1	13.1	15.1	2.3	4.0	12.6
Q3	3.5	46.5	9.2	149.6	3.7	17.9	8.9	5.0	6.5	6.1	14.9	5.9	-0.4	7.2	13.4
Q4	3.7	19.9	7.7	-17.3	3.7	20.7	10.3	5.7	1.9	7.1	10.7	4.1	0.5	8.7	9.7

Table 4 Continued: Percentage Change in Gross Value Added by Kind of Economic Activity at constant 2006 Prices

Calendar year	Agriculture	Mining	Manufacturing	Water & Electricity	Construction	Trade, Hotels & Restaurants	Transport & Communication	Finance & Business Service	General Government	Social & Personal Services	Value Added	Taxes on Import	Other Taxes on products	Subsidies	Total GDP
2014 Q1	0.3	4.7	-1.7	-60.8	2.5	14.6	9.3	-1.0	-2.7	4.0	3.4	2.7	3.3	5.4	3.3
Q2	0.0	-6.7	-1.7	-43.2	3.6	14.3	11.3	2.5	11.5	4.4	4.1	8.8	8.3	7.4	4.6
Q3	-3.2	5.7	0.2	-73.9	4.5	9.0	10.1	5.6	12.9	4.9	5.9	9.0	4.7	4.3	6.0
Q4	1.5	-0.2	5.1	2.5	4.2	5.6	8.4	3.5	-2.1	3.5	2.9	1.4	1.3	-1.4	2.7
2015 Q1	1.3	2.0	6.8	3.9	4.9	-1.5	4.3	3.2	7.4	4.5	3.1	1.0	-0.6	1.3	2.7
Q2	1.1	-8.1	6.0	-64.6	3.9	-4.5	3.8	4.3	0.6	4.1	-0.8	5.3	1.7	4.3	-0.3
Q3	-0.5	-40.5	2.1	24.7	3.4	-6.1	5.0	4.3	2.0	2.9	-6.4	2.1	3.0	3.6	-5.4
Q4	-0.7	-30.4	-1.3	144.6	3.6	-3.5	5.1	6.2	3.3	3.0	-3.8	-5.7	3.7	4.9	-3.5
2016 Q1	-3.1	-5.6	-0.9	98.0	3.4	5.5	6.3	5.3	1.1	3.5	2.5	1.1	1.5	1.8	2.3
Q2	-3.2	-13.6	0.4	410.4	4.6	20.1	4.6	3.5	1.9	3.5	4.4	-1.9	2.8	2.8	3.9
Q3	1.7	18.3	1.7	59.0	4.2	16.2	5.2	3.1	1.8	4.1	7.9	-2.6	1.2	3.6	6.9
Q4	0.7	-6.2	1.9	90.1	4.7	12.4	6.5	3.3	3.2	2.9	4.7	1.9	-2.3	4.8	4.2
2017 Q1	1.5	-28.9	-0.3	-32.2	4.0	18.7	3.8	5.4	1.3	2.1	1.1	-0.6	-1.5	3.3	0.8

Table 5: Gross Domestic Product by Type of Expenditure at Current Prices (P million)

Calendar year	Government Final Consumption			Household Final Consumption			Gross Fixed Capital Formation					Change in Inventories				Gross Domestic Expenditure	Exports			Imports			Errors & Omissions	Total GDP	
	Central Govt	Local Govt	Total	Non-Profit Institutions	Household Consumption (Mkt)	Household Consumption (Non-Mkt)	Total	Construction	Machinery & Equipment	Transport Equipment	Mineral Prospecting	Total	Livestock	Minerals	Others		Total	Goods	Services	Total	Goods	Services			Total
2004	7,311.3	1,319.8	8,631.1	796.4	13,795.9	2,132.5	16,724.8	6,937.7	3,531.7	1,019.8	214.4	11,703.7	87.8	511.2	930.2	1,529.3	38,588.8	17,344.6	3,511.3	20,855.9	13,475.6	3,920.8	17,396.4	-11.7	42,036.6
2005	8,361.6	1,484.7	9,846.3	1,013.0	16,096.4	2,230.5	19,340.0	8,035.7	3,624.8	950.4	249.7	12,860.5	74.1	15.5	829.2	918.9	42,965.6	22,708.3	4,151.5	26,859.8	13,729.2	4,329.3	18,058.5	-1,014.7	50,752.2
2006	8,502.4	1,568.1	10,070.5	1,217.0	19,222.9	2,452.8	22,892.7	9,930.8	4,095.6	1,159.8	300.5	15,486.6	160.7	-1,164.1	828.2	-175.2	48,274.7	26,386.1	4,499.9	30,886.0	15,283.9	4,859.8	20,143.7	89.9	59,106.9
2007	9,989.2	1,826.2	11,815.4	1,335.0	22,220.5	3,066.7	26,622.2	11,421.2	5,515.0	1,768.0	357.2	19,061.5	217.9	41.6	1,357.0	1,616.4	59,115.5	31,692.0	4,917.0	36,609.0	21,228.0	6,028.3	27,256.3	-1,315.5	67,152.7
2008	12,936.1	2,270.6	15,206.6	1,147.1	27,967.0	3,815.0	32,929.1	12,052.9	8,122.2	2,430.4	246.1	22,851.6	184.0	2,081.1	1,922.6	4,187.7	75,175.1	32,757.0	1,371.0	34,128.0	35,330.0	2,809.0	38,139.0	3,556.8	74,720.9
2009	12,971.2	2,521.7	15,492.9	1,217.0	32,077.5	3,929.1	37,223.5	14,587.8	8,077.9	2,665.8	313.9	25,645.5	191.8	547.0	2,214.8	2,953.6	81,315.5	23,866.0	1,699.6	25,565.6	33,346.0	4,770.0	38,116.0	4,697.3	73,462.4
2010	14,363.6	2,798.3	17,162.0	1,335.0	37,195.1	4,161.9	42,692.1	16,852.9	9,484.8	2,510.7	353.2	29,201.5	253.8	4,409.0	2,109.3	6,772.1	95,827.6	31,237.0	6,668.0	37,905.0	38,035.0	6,497.0	44,532.0	-2,333.2	86,867.4
2011	16,592.9	2,814.4	19,407.3	1,464.6	42,755.9	4,408.6	48,629.1	19,364.4	10,907.5	2,962.6	406.1	33,640.6	1.3	4,853.5	2,001.1	6,855.8	108,532.9	44,043.0	8,395.0	52,438.0	48,821.0	7,443.0	56,264.0	273.0	104,979.9
2012	18,342.9	2,852.7	21,195.6	1,995.2	50,789.5	4,315.5	57,100.3	23,308.9	12,601.9	3,437.1	455.5	39,803.5	187.6	221.6	2,460.8	2,869.9	120,969.3	45,886.0	8,226.0	54,112.0	61,074.0	6,391.0	67,465.0	2,254.1	109,870.4
2013	20,005.4	3,209.3	23,214.7	2,154.9	57,512.1	5,442.5	65,109.5	26,629.9	12,316.1	2,408.1	571.0	41,925.1	-261.6	-4,752.3	-103.3	-5117.2	125,132.2	66,551.0	10,437.0	76,988.0	69,385.0	7,508.0	76,893.0	-68.8	125,158.3
2014	25,343.8	3,733.9	29,077.7	2,308.3	60,279.5	5,887.0	68,474.7	28,775.8	12,346.4	2,697.1	613.3	44,432.7	165.0	-417.1	-3,547.0	-3799.1	138,186.0	76,594.0	12,138.0	88,732.0	71,734.0	6,951.0	78,685.0	-2,364.7	145,868.4
2015	26,034.1	4,022.6	30,056.7	2,460.1	67,271.0	6,278.1	76,009.2	31,329.6	15,132.9	2,532.9	648.0	49,643.4	1,485.7	2,825.6	-7,099.0	-2787.6	152,921.7	63,528.0	12,695.0	76,223.0	71,793.0	6,363.0	78,156.0	-5,065.2	145,923.4
2016	26,662.8	4,284.0	30,946.8	2,662.5	71,712.2	6,746.4	81,121.1	34,784.0	15,116.2	2,397.1	688.5	52,985.8	69.4	-2,037.2	-9,563.9	-11531.7	153,522.0	80,197.4	13,813.7	94,011.1	65,843.9	5,837.4	71,681.2	-6,563.9	169,687.9
2004 Q1	1,845.5	354.9	2,200.4	181.5	3,317.9	466.8	3,966.2	1,640.7	785.6	286.9	51.0	2,764.2	21.3	104.6	359.0	484.8	9,415.6	4,182.0	1,046.3	5,228.3	2,846.0	1,095.1	3,941.1	-449.5	10,253.3
Q2	1,753.4	316.7	2,070.1	192.8	3,394.3	433.5	4,020.6	1,686.8	957.3	243.1	52.4	2,939.6	39.0	-298.7	349.9	90.2	9,120.5	3,625.7	595.8	4,221.5	3,411.2	886.8	4,298.0	29.2	9,073.2
Q3	1,883.2	314.1	2,197.3	204.7	3,369.4	647.1	4,221.2	1,780.3	866.1	259.1	55.0	2,960.5	16.9	406.6	116.8	540.3	9,919.4	4,946.5	677.0	5,623.5	3,481.0	1,051.5	4,532.5	466.4	11,476.8
Q4	1,829.1	334.2	2,163.3	217.4	3,714.3	585.0	4,516.7	1,829.9	922.6	230.8	56.0	3,039.3	10.7	298.7	104.6	414.0	10,133.3	4,590.4	1,192.2	5,782.6	3,737.4	887.3	4,624.7	-57.8	11,233.4
2005 Q1	2,298.6	406.0	2,704.6	230.9	3,992.9	458.6	4,682.4	1,879.0	899.1	357.2	53.4	3,188.8	12.2	-620.1	218.5	-389.3	10,186.5	5,538.7	1,168.1	6,706.8	3,363.9	1,239.0	4,602.9	52.7	12,343.1
Q2	1,802.4	318.2	2,120.6	245.2	3,694.1	571.8	4,511.1	1,931.6	830.2	185.4	50.9	2,998.2	15.7	-129.7	184.2	70.3	9,700.1	4,871.5	536.7	5,408.2	3,251.0	994.0	4,245.0	263.4	11,126.7
Q3	1,973.4	353.2	2,326.6	260.4	4,085.9	603.9	4,950.1	2,083.3	935.0	207.4	68.0	3,293.7	30.7	597.7	189.2	817.6	11,388.0	7,020.6	961.4	7,982.0	3,289.8	1,034.3	4,324.2	-858.2	14,187.7
Q4	2,287.2	407.3	2,694.5	276.5	4,323.5	596.3	5,196.4	2,141.7	960.5	200.3	77.3	3,379.8	15.5	167.6	237.2	420.3	11,691.0	5,277.5	1,485.3	6,762.8	3,824.5	1,062.0	4,886.4	-472.7	13,094.7
2006 Q1	1,970.0	374.1	2,344.2	293.7	4,531.2	412.8	5,237.6	2,394.5	828.8	270.9	66.6	3,560.8	31.6	-1,284.0	199.0	-1,053.4	10,089.2	6,028.7	1,269.1	7,297.8	3,158.9	1,298.3	4,457.2	1,072.2	14,002.0
Q2	1,963.6	375.1	2,338.8	299.0	4,323.7	703.5	5,326.1	2,461.6	964.0	262.0	65.6	3,753.2	25.8	7,957.6	185.3	8,168.8	19,586.9	6,090.1	649.3	6,739.4	3,925.3	1,080.4	5,005.8	-8,110.6	13,209.9
Q3	2,202.5	402.2	2,604.8	316.9	5,246.7	630.4	6,194.0	2,569.3	1,106.0	293.0	84.6	4,052.9	59.3	-11,495.1	248.6	-11,187.2	1,664.5	6,214.5	924.3	7,138.8	4,023.7	1,345.3	5,369.0	12,781.5	16,215.7
Q4	2,366.2	416.6	2,782.9	307.4	5,121.3	706.2	6,134.9	2,505.4	1,196.8	333.9	83.7	4,119.7	44.0	3,657.4	195.3	3,896.7	16,934.1	8,052.8	1,657.2	9,710.0	4,175.9	1,135.8	5,311.7	-5,653.2	15,679.3
2007 Q1	2,494.9	435.4	2,930.4	304.3	4,680.0	733.3	5,717.7	2,661.9	1,074.2	380.3	82.5	4,198.8	49.9	-262.6	185.3	-27.4	12,819.5	8,956.0	1,397.0	10,353.0	4,192.0	1,697.0	5,889.0	-1,549.6	15,733.9
Q2	2,367.2	437.2	2,804.4	312.7	5,186.7	728.0	6,227.4	2,769.6	1,285.8	488.6	84.9	4,628.8	69.9	-147.2	189.6	112.3	13,773.0	7,693.0	649.0	8,342.0	5,160.0	1,197.0	6,357.0	16.4	15,774.4
Q3	2,549.9	475.9	3,025.9	359.6	5,997.3	731.7	7,088.6	2,939.9	1,644.1	492.0	95.6	5,171.7	62.1	1,650.7	478.3	2,191.0	17,477.2	8,923.0	1,369.0	10,292.0	5,395.0	1,549.3	6,944.3	-2,310.6	18,514.2
Q4	2,577.2	477.6	3,054.7	358.5	6,356.5	873.5	7,588.6	3,049.8	1,510.9	407.1	94.3	5,062.1	36.0	-1,199.3	503.8	-659.5	15,045.9	6,120.0	1,502.0	7,622.0	6,481.0	1,585.0	8,066.0	2,528.3	17,130.1
2008 Q1	3,253.2	546.6	3,799.7	334.9	5,704.2	803.7	6,842.8	2,831.3	1,990.9	526.2	68.1	5,416.4	36.0	125.4	559.5	720.9	16,779.8	9,018.0	367.0	9,385.0	7,505.0	650.0	8,155.0	-525.2	17,484.6
Q2	3,087.6	558.5	3,646.0	379.8	6,463.1	966.4	7,809.3	2,913.9	1,956.4	621.5	56.1	5,547.9	43.0	-130.2	521.0	433.9	17,437.1	8,259.0	357.0	8,616.0	8,835.0	676.0	9,511.0	744.8	17,286.9
Q3	3,088.1	559.3	3,647.4	209.7	8,073.8	975.2	9,258.7	3,174.0	1,884.8	590.7	64.4	5,713.9	49.3	-427.0	402.7	25.0	18,645.0	10,776.0	265.0	11,041.0	9,677.0	651.0	10,328.0	790.9	20,148.9
Q4	3,507.2	606.2	4,113.5	222.7	7,725.8	1,069.8	9,018.3	3,133.7	2,290.0	692.0	57.6	6,173.4	55.7	2,513.0	439.3	3,008.0	22,313.1	4,704.0	382.0	5,086.0	9,313.0	832.0	10,145.0	2,546.3	19,800.4
2009 Q1	3,235.4	620.2	3,855.6	307.8	7,103.8	904.6	8,316.1	3,311.1	1,865.6	802.8	62.4	6,041.9	51.4	885.3	679.4	1,616.1	19,829.7	3,886.0	317.6	4,203.6	7,736.0	1,096.0	8,832.0	1,394.7	16,596.0
Q2	3,443.0	653.7	4,096.7	296.0	6,924.3	1,162.2	8,382.4	3,723.9	2,106.8	568.1	79.2	6,478.1	46.4	-350.2	444.6	140.8	19,098.1	6,590.0	633.0	7,223.0	8,001.0	1,295.0	9,296.0	1,706.5	18,731.5
Q3	3,033.0	608.5	3,641.5	310.4	9,134.0	933.3	10,377.7	4,025.5	1,930.9	495.8	90.9	6,543.1	44.0	72.3	409.0	525.3	21,087.6	6,825.0	359.0	7,184.0	8,422.0	1,050.0	9,472.0	-327.7	18,471.9
Q4	3,259.8	639.2	3,899.1	302.8	8,915.5	929.0	10,147.3	3,527.2	2,174.6	799.2	81.4	6,582.4	50.1	-60.5	681.7	671.4	21,300.1	6,565.0	390.0	6,955.0	9,187.0	1,329.0	10,516.0	1,923.9	19,663.0
2010 Q1	3,448.5	671.6	4,120.1	319.3	7,830.2	1,044.0	9,193.5	3,718.7	2,280.9	677.0	70.2	6,746.7	57.7	568.2	472.2	1,098.1	21,158.4	7,167.0	1,528.0	8,695.0	9,199.0	1,426.0	10,625.0	389.3	19,617.7
Q2	3,603.3	699.0	4,302.3	335.0	9,298.0	1,048.9	10,681.9	4,118.3	2,251.0	608.7	89.2	7,067.2	51.0	914.1	523.7	1,488.8	23,540.1	7,103.0	1,683.0	8,786.0	8,771.0	1,772.0	10,543.0	-868.2	20,914.9
Q3	3,665.2	711.7	4,376.9	349.4	10,652.3	1,030.3	12,032.0	4,302.8	2,633.7	634.9	102.3	7,673.6	61.9	1,129.5	546.8	1,738.2	25,820								

Table 5 Continued: Gross Domestic Product by Type of Expenditure at Current Prices (P million)

Calendar Year	Government Final Consumption			Non-Profit Institutions	Household Final Consumption			Gross Fixed Capital Formation					Change in Inventories				Gross Domestic Expenditure	Exports			Imports			Errors & Omissions	Total GDP
	Central Govt	Local Govt	Total		Household Consumption (Mkt)	Household Consumption (Non-Mkt)	Total	Construction	Machinery & Equipment	Transport Equipment	Mineral Prospecting	Total	Livestock	Minerals	Others	Total		Goods	Services	Total	Goods	Services	Total		
2012 Q1	4,371.3	707.4	5,078.8	479.9	9,325.5	1,116.2	10,921.7	5,712.3	3,053.4	836.4	118.8	9,720.9	45.4	712.8	637.8	1,396.0	27,117.4	9,783.0	1,975.0	11,758.0	12,823.0	1,521.0	14,344.0	1,512.7	26,044.1
Q2	4,931.2	711.3	5,642.5	489.3	13,148.6	1,048.1	14,686.0	5,372.4	3,251.4	961.2	93.9	9,678.8	50.2	-122.6	578.1	505.7	30,513.1	10,414.0	2,014.0	12,428.0	12,903.0	1,648.0	14,551.0	-664.0	27,726.0
Q3	4,470.0	710.5	5,180.5	519.9	13,589.5	1,002.9	15,112.3	5,906.6	3,146.8	832.8	119.7	10,005.9	60.9	-1,110.1	641.4	-407.8	29,890.9	13,556.0	1,961.0	15,517.0	19,499.0	1,925.0	21,424.0	3,557.9	27,541.9
Q4	4,570.3	723.5	5,293.8	506.1	14,725.9	1,148.3	16,380.3	6,317.7	3,150.3	806.8	123.1	10,397.8	31.1	741.5	603.4	1,376.0	33,447.9	12,133.0	2,276.0	14,409.0	15,849.0	1,297.0	17,146.0	-2,152.5	28,558.5
2013 Q1	4,839.4	750.0	5,589.4	518.3	13,874.1	1,218.7	15,611.1	6,497.2	2,509.3	586.0	140.5	9,733.1	-140.5	-4,500.8	718.1	-3,923.2	27,010.3	16,867.0	2,151.0	19,018.0	16,218.0	1,859.0	18,077.0	474.3	28,425.6
Q2	4,955.4	774.7	5,730.0	535.7	13,616.5	1,541.2	15,693.3	6,637.0	3,293.9	716.9	142.1	10,789.9	-70.1	-304.8	1,374.8	999.9	33,213.1	14,736.0	2,675.0	17,411.0	17,064.0	2,010.0	19,074.0	912.7	32,462.8
Q3	5,070.9	807.3	5,878.3	545.5	14,503.8	1,330.7	16,379.9	6,650.2	3,176.6	480.2	143.5	10,450.4	-30.2	-197.2	-2,420.8	-2,648.2	30,060.4	19,550.0	2,792.0	22,342.0	17,127.0	1,996.0	19,123.0	-1,613.7	31,665.7
Q4	5,139.7	877.4	6,017.1	555.5	15,517.8	1,351.9	17,425.2	6,845.6	3,336.2	625.0	144.9	10,951.8	-20.8	250.5	224.6	454.3	34,848.4	15,398.0	2,819.0	18,217.0	18,976.0	1,643.0	20,619.0	157.8	32,604.2
2014 Q1	5,996.4	895.3	6,891.7	565.3	14,174.6	1,363.5	16,103.5	6,994.6	3,189.6	626.6	149.2	10,960.1	-41.9	-120.9	70.0	-92.7	33,862.6	17,271.0	2,947.0	20,218.0	17,908.0	1,742.0	19,650.0	77.8	34,508.4
Q2	6,401.8	933.5	7,335.4	573.2	14,368.1	1,488.1	16,429.4	7,220.8	2,977.9	720.1	151.8	11,070.7	-17.0	-295.5	-498.4	-810.9	34,024.5	21,095.0	2,911.0	24,006.0	18,382.0	1,626.0	20,008.0	-304.1	37,718.4
Q3	6,496.0	956.5	7,452.5	580.8	15,515.2	1,524.7	17,620.7	7,250.6	2,392.8	686.7	153.6	10,483.7	53.7	189.0	-1,909.3	-1,666.6	33,890.3	19,845.0	3,099.0	22,944.0	17,774.0	1,631.0	19,405.0	-1,273.7	36,155.6
Q4	6,449.5	948.6	7,398.1	589.0	16,221.5	1,510.6	18,321.1	7,309.8	3,786.1	663.7	158.6	11,918.2	170.3	-189.8	-1,209.3	-1,228.8	36,408.6	18,383.0	3,181.0	21,564.0	17,670.0	1,952.0	19,622.0	-864.7	37,486.0
2015 Q1	6,357.9	962.7	7,320.6	596.6	15,718.3	1,539.3	17,854.2	7,547.4	3,267.7	578.3	163.6	11,557.0	332.8	89.3	-1,692.8	-1,270.7	35,461.1	19,510.0	2,723.0	22,233.0	18,171.0	1,688.0	19,859.0	-1,264.8	36,570.3
Q2	6,547.1	1,005.3	7,552.4	606.9	16,649.2	1,573.5	18,829.6	7,847.5	3,884.8	638.1	154.9	12,525.2	413.2	207.8	-2,335.9	-1,714.9	37,192.3	19,832.0	3,276.0	23,108.0	19,700.0	1,569.0	21,269.0	-1,701.7	37,329.7
Q3	6,497.5	1,021.8	7,519.3	620.8	16,935.2	1,568.9	19,124.9	7,889.4	4,155.2	637.6	161.3	12,843.5	411.7	782.1	460.3	1,654.1	41,141.8	11,852.0	3,372.0	15,224.0	17,803.0	1,548.0	19,351.0	225.5	37,240.2
Q4	6,631.6	1,032.8	7,664.4	635.8	17,968.4	1,596.3	20,200.5	8,045.3	3,825.2	679.0	168.2	12,717.6	328.0	1,746.4	-3,530.5	-1,456.1	39,126.4	12,334.0	3,324.0	15,658.0	16,119.0	1,558.0	17,677.0	-2,324.3	34,783.2
2016 Q1	6,691.2	1,069.2	7,760.4	646.1	16,930.8	1,692.3	19,269.2	8,315.7	3,201.5	503.6	173.4	12,194.2	162.3	-715.9	-2,447.1	-3,000.6	36,223.3	19,730.9	3,317.0	23,047.9	16,272.1	1,052.5	17,324.6	-2,447.1	39,499.5
Q2	6,856.2	1,064.8	7,921.0	657.6	17,214.8	1,713.2	19,585.6	8,598.4	3,884.7	598.5	165.7	13,247.3	38.1	-178.2	-5,905.4	-6,045.6	34,708.3	25,387.9	3,290.0	28,677.8	16,979.8	1,460.4	18,440.2	-2,905.4	42,440.5
Q3	6,507.8	1,072.1	7,579.9	671.5	18,486.1	1,724.8	20,882.4	8,899.4	3,850.1	725.8	171.2	13,646.5	-44.8	-1,189.3	-1,114.3	-2,348.4	39,760.4	18,911.1	3,303.5	22,214.6	15,513.6	1,256.4	16,770.1	-1,114.3	44,090.6
Q4	6,607.6	1,077.9	7,685.4	687.2	19,080.5	1,616.1	21,383.9	8,970.6	4,179.8	569.3	178.2	13,897.8	-86.2	46.2	-97.0	-137.0	42,830.1	16,167.5	3,903.3	20,070.8	17,078.3	2,068.1	19,146.4	-97.0	43,657.4
2017 Q1	6,753.1	1,105.7	7,858.8	695.1	19,455.2	1,689.1	21,839.3	8,979.5	3,677.7	564.9	182.0	13,404.1	-86.2	-158.0	-1,460.6	-1,704.8	41,397.5	18,543.7	3,516.0	22,059.7	16,428.6	1,952.8	18,381.4	-1,418.0	43,657.9

Note: 2014-2016 estimates are provisional

Table 6: Gross Domestic Product by Type of Expenditure at Constant Prices (P million)

Calendar year	Government Final Consumption			Non-Profit Institutions	Household Final Consumption		Total	Gross Fixed Capital Formation				Change in Inventories				Gross Domestic Expenditure	Exports			Imports			Errors & Omissions	Total GDP	
	Central Govt	Local Govt	Total		Household Consumption (Mkt)	Household Consumption (Non-Mkt)		Construction	Machinery & Equipment	Transport Equipment	Mineral Prospecting	Total	Livestock	Minerals	Others		Total	Goods	Services	Total	Goods	Services			Total
2004	9,695.9	1,499.1	11,195.0	837.6	14,545.3	2,242.9	17,625.7	8,757.6	4,167.6	1,064.3	225.5	14,215.1	75.9	191.2	978.4	1,245.5	44,281.4	21,072.7	4,265.8	25,338.5	16,328.3	4,851.9	21,180.2	3,728.1	52,167.7
2005	8,918.5	1,568.8	10,487.3	1,022.1	16,252.3	2,250.6	19,525.0	9,190.2	4,062.8	974.9	251.9	14,479.8	80.7	-417.5	1,236.7	899.9	45,392.0	25,319.2	4,628.6	29,947.8	15,303.7	4,831.1	20,134.8	-660.2	54,544.8
2006	8,502.4	1,568.1	10,070.5	1,217.0	19,222.9	2,452.8	22,892.7	9,930.8	4,095.6	1,159.7	300.5	15,486.5	160.7	-1,164.1	828.2	-175.2	48,274.6	26,386.1	4,499.9	30,886.0	15,271.4	4,872.3	20,143.7	90.0	59,106.9
2007	8,798.4	1,626.7	10,425.1	1,326.2	21,952.7	3,046.3	26,325.1	10,268.9	4,901.3	1,718.7	354.9	17,243.8	125.3	-509.8	1,347.9	963.4	54,957.5	28,663.8	4,841.7	33,505.6	19,411.8	5,758.8	25,170.6	706.7	63,999.1
2008	9,193.5	1,751.4	10,944.9	1,082.0	26,187.9	3,598.5	30,868.4	9,213.3	6,121.7	2,251.6	232.2	17,818.8	157.2	801.9	1,813.5	2,772.6	62,404.8	27,555.5	5,119.2	32,674.7	24,666.2	4,920.2	29,586.5	2,503.0	67,996.1
2009	9,520.5	1,748.7	11,269.2	1,076.4	28,024.6	3,475.3	32,576.3	10,779.1	6,103.4	2,349.7	277.7	19,509.9	209.3	-300.6	1,561.0	1,469.7	64,825.2	18,677.1	1,688.9	20,365.9	21,737.6	4,628.8	26,366.4	3,968.0	62,792.8
2010	9,945.7	1,744.3	11,690.0	1,110.1	30,813.3	3,460.7	35,384.1	11,711.9	7,089.7	2,205.0	293.7	21,300.2	163.4	3,300.2	1,753.9	5,217.6	73,591.9	22,264.8	1,364.5	23,629.3	23,305.3	4,769.8	28,075.1	-976.0	68,170.1
2011	10,442.4	1,830.7	12,273.1	1,166.9	33,491.6	3,512.7	38,171.2	13,136.3	7,931.9	2,496.9	323.6	23,888.6	236.2	794.4	1,594.4	2,625.1	76,958.1	28,696.4	1,441.9	30,138.2	27,882.9	5,589.6	33,472.5	-1,330.5	72,293.3
2012	12,229.8	1,912.5	14,142.3	1,127.5	33,673.4	2,853.2	37,654.1	14,140.5	9,782.2	2,908.3	310.1	27,141.0	217.5	154.4	1,615.9	1,987.7	80,925.2	30,069.2	5,445.9	35,515.1	40,012.4	4,197.3	44,209.7	3,284.2	75,514.8
2013	14,059.4	2,118.1	16,177.5	989.8	37,035.6	3,430.1	41,455.5	15,747.1	9,491.1	2,063.6	387.2	27,689.0	-106.5	-2,742.1	1,355.6	-1,493.0	83,828.9	41,836.5	6,570.8	48,407.2	44,042.4	4,916.8	48,959.1	803.7	84,080.7
2014	15,751.2	2,170.3	17,921.5	1,029.1	37,260.6	3,518.0	41,807.7	16,364.1	9,145.1	2,193.5	393.7	28,096.4	-77.6	-571.9	-1,753.9	-2,403.3	85,422.3	44,926.1	7,254.0	52,180.0	43,908.9	4,794.7	48,703.7	-1,329.2	87,569.5
2015	16,095.2	2,279.9	18,375.1	1,061.8	38,840.3	3,549.0	43,451.1	16,920.6	11,178.0	2,059.7	398.1	30,556.4	570.9	2,666.4	-2,116.7	1,120.7	93,503.3	36,082.6	7,169.1	43,251.8	44,323.3	4,560.6	48,883.9	-1,790.4	86,080.8
2016	16,068.4	2,391.3	18,459.6	1,093.2	39,751.2	3,575.9	44,420.3	17,626.2	11,661.6	1,971.7	410.2	31,669.7	(74.9)	-2,479.6	-3,918.4	-6,472.9	88,076.8	41,986.5	7,292.4	49,278.9	41,377.1	4,465.9	45,843.0	-1,737.7	89,775.1
2004 Q1	2,469.8	420.1	2,889.9	197.2	3,606.9	507.5	4,311.6	2,198.2	957.4	308.4	57.4	3,521.4	19.5	107.3	353.8	480.6	11,203.5	5,246.3	1,311.1	6,557.4	3,969.3	1,550.0	5,519.3	-67.6	12,174.0
Q2	2,282.8	356.3	2,639.2	203.1	3,584.2	457.1	4,244.4	2,204.1	1,131.4	253.5	55.9	3,644.8	32.9	-242.9	361.8	151.8	10,680.1	4,411.1	724.1	5,135.2	3,890.3	1,018.4	4,908.7	1,446.5	12,353.1
Q3	2,487.8	348.3	2,836.0	213.4	3,520.7	675.3	4,409.5	2,271.6	1,013.1	267.3	56.4	3,608.4	14.7	211.8	132.7	359.2	11,213.1	5,956.2	814.3	6,770.5	4,219.0	1,275.6	5,494.6	1,237.4	13,726.4
Q4	2,455.5	374.4	2,829.9	223.9	3,833.4	602.9	4,660.2	2,083.7	1,065.8	235.2	55.8	3,440.5	8.9	115.0	130.1	254.0	11,184.6	5,459.1	1,416.3	6,875.4	4,249.7	1,007.9	5,257.6	1,111.7	13,914.2
2005 Q1	2,637.3	455.2	3,092.5	245.7	4,241.5	488.6	4,975.8	2,240.6	1,061.0	382.2	59.4	3,743.3	13.9	-367.0	291.6	-61.6	11,750.0	6,506.6	1,376.9	7,883.4	3,850.1	1,411.9	5,262.0	-1,531.9	12,839.5
Q2	1,907.2	340.8	2,247.9	251.6	3,787.2	587.3	4,626.2	2,264.6	944.5	191.3	59.6	3,460.1	17.1	-146.8	327.2	197.5	10,531.7	5,517.6	609.9	6,127.5	3,784.4	1,150.6	4,935.1	1,295.8	13,019.9
Q3	2,105.1	363.0	2,468.1	257.9	4,047.0	598.6	4,903.5	2,318.4	1,027.5	206.7	68.7	3,621.3	33.3	93.0	291.3	417.5	11,410.4	7,673.6	1,054.4	8,728.0	3,857.9	1,217.0	5,074.8	-878.8	14,184.8
Q4	2,268.9	409.8	2,678.8	266.9	4,176.5	576.1	5,019.5	2,366.6	1,029.8	194.7	64.1	3,655.2	16.4	3.4	326.7	346.5	11,699.9	5,621.4	1,587.4	7,208.8	3,811.3	1,051.6	4,862.9	454.8	14,500.6
2006 Q1	2,173.8	397.2	2,571.0	302.8	4,669.8	426.7	5,399.3	2,591.2	814.0	279.5	73.3	3,758.0	33.8	-908.7	199.1	-675.8	11,052.5	6,222.0	1,309.2	7,531.2	3,344.2	1,361.2	4,705.4	527.1	14,405.4
Q2	2,013.9	385.2	2,399.1	300.2	4,344.4	708.4	5,353.0	2,566.2	922.3	263.3	70.6	3,822.4	26.4	5,494.3	203.9	5,724.7	17,299.2	6,123.0	652.5	6,775.5	3,713.0	1,018.9	4,731.9	-4,970.5	14,372.3
Q3	2,130.6	387.3	2,517.9	312.5	5,179.1	623.3	6,114.8	2,611.3	1,140.3	289.2	77.4	4,118.1	59.7	-7,515.1	229.3	-7,226.1	5,524.7	6,134.3	911.9	7,046.2	4,059.6	1,357.0	5,416.6	8,198.8	15,353.1
Q4	2,184.1	398.4	2,582.5	301.5	5,029.6	694.5	6,025.6	2,162.1	1,219.0	327.7	79.2	3,788.0	40.7	1,765.4	195.9	2,002.1	14,398.2	7,906.8	1,626.4	9,533.2	4,154.6	1,135.2	5,289.8	-3,665.4	14,976.1
2007 Q1	2,275.5	401.6	2,677.0	308.7	4,843.2	749.4	5,901.3	2,272.3	1,010.9	395.2	111.8	3,790.3	33.6	-612.9	328.6	-250.6	12,117.9	8,483.5	1,336.2	9,819.7	4,022.6	1,635.4	5,657.9	-944.6	15,335.1
Q2	2,061.3	390.9	2,452.2	308.8	5,232.4	724.4	6,265.6	2,507.7	1,246.2	494.4	72.9	4,321.2	40.5	867.8	352.7	1,261.1	14,300.1	6,696.6	604.2	7,300.8	4,727.3	1,154.7	5,882.0	369.0	16,088.0
Q3	2,249.6	419.4	2,669.0	354.8	5,794.4	720.7	6,869.9	2,883.9	1,278.1	391.1	86.4	4,639.4	34.2	-962.5	346.9	-581.4	13,596.9	8,417.3	1,262.2	9,679.5	4,885.1	1,471.4	6,356.5	-602.4	16,317.6
Q4	2,212.0	414.9	2,626.9	353.8	6,082.7	851.7	7,288.3	2,605.0	1,366.1	438.0	83.7	4,492.9	17.0	197.8	319.6	534.4	14,942.5	5,066.4	1,639.1	6,705.5	5,776.9	1,497.4	7,274.3	1,884.7	16,258.4
2008 Q1	2,478.5	417.8	2,896.3	308.5	5,905.1	840.4	7,054.0	2,194.6	1,483.9	500.6	46.9	4,226.0	33.8	-192.6	1,419.6	1,260.9	15,437.1	8,262.0	1,565.7	9,827.7	5,776.8	1,464.1	7,240.9	-1,626.0	16,397.8
Q2	2,076.3	418.9	2,495.2	250.7	6,098.8	916.9	7,266.4	2,385.1	1,528.2	577.6	59.0	4,549.8	34.8	392.9	-214.0	213.7	14,525.1	6,932.1	1,074.4	8,006.5	6,272.6	1,133.1	7,405.7	1,939.5	17,065.3
Q3	2,263.8	448.7	2,712.5	256.9	7,286.9	882.9	8,426.7	2,289.2	1,528.2	543.3	67.0	4,427.7	27.2	-400.4	258.8	-114.3	15,452.5	8,634.0	1,370.8	10,004.8	6,473.4	1,103.5	7,576.9	-272.8	17,607.6
Q4	2,375.1	465.9	2,841.0	265.9	6,897.0	958.3	8,121.3	2,344.4	1,581.5	630.1	59.4	4,615.4	61.4	1,002.0	349.0	1,412.4	16,990.0	3,727.4	1,108.4	4,835.8	6,143.4	1,219.6	7,363.0	2,462.4	16,925.3
2009 Q1	2,648.1	460.7	3,108.8	267.8	6,591.8	814.8	7,674.5	2,600.7	1,403.8	718.2	56.1	4,778.8	42.6	-47.4	388.7	383.8	15,945.9	3,519.0	350.2	3,869.2	5,274.9	1,133.6	6,408.5	1,437.1	14,843.7
Q2	2,231.3	420.5	2,651.8	265.6	6,033.6	1,037.4	7,336.6	2,890.8	1,617.7	503.2	70.5	5,082.2	51.8	-286.0	393.6	159.4	15,230.1	5,021.7	504.7	5,526.3	5,409.2	1,252.9	6,662.2	1,717.3	15,811.5
Q3	2,331.6	436.7	2,768.3	276.4	7,898.3	814.4	8,989.0	2,821.6	1,442.3	434.6	80.1	4,778.6	62.4	-3.2	374.0	433.2	16,969.2	5,212.6	453.3	5,					

Table 6 Continued: Gross Domestic Product by Type of Expenditure at Constant Prices (P million)

Calendar year	Government Final Consumption			Non-Profit Institutions	Household Final Consumption			Gross Fixed Capital Formation					Change in Inventories				Gross Domestic Expenditure	Exports			Imports			Errors & Omissions	Total GDP
	Central Govt	Local Govt	Total		Household Consumption (Mkt)	Household Consumption (Non-Mkt)	Total	Construction	Machinery & Equipment	Transport Equipment	Mineral Prospecting	Total	Livestock	Minerals	Others	Total		Goods	Services	Total	Goods	Services	Total		
2012 Q1	2,904.7	443.3	3,348.0	303.2	6,879.5	753.1	7,935.9	3,597.6	2,187.9	719.0	80.5	6,585.0	60.1	349.4	430.4	839.8	18,708.7	6,601.2	1,332.7	7,933.9	8,652.5	1,026.3	9,678.8	1,721.8	18,685.5
Q2	2,311.6	465.1	2,776.7	324.8	8,661.6	711.0	9,697.4	3,310.9	2,438.4	751.9	64.2	6,565.4	64.1	-53.3	381.1	391.8	19,431.3	6,864.9	1,327.6	8,192.5	8,505.6	1,086.4	9,592.0	550.6	18,582.4
Q3	3,071.8	493.5	3,565.3	259.8	8,850.7	653.0	9,763.5	3,589.8	2,590.6	730.1	90.2	7,000.7	59.9	-498.8	417.6	-21.3	20,308.2	8,825.5	1,326.7	10,152.2	12,694.7	1,253.3	13,947.9	1,927.8	18,440.3
Q4	3,941.7	510.6	4,452.3	239.6	9,281.6	736.1	10,257.3	3,642.2	2,565.3	707.3	75.2	6,990.0	33.5	357.1	386.8	777.4	22,477.0	7,777.6	1,459.0	9,236.5	10,159.6	831.4	10,991.0	-916.0	19,806.6
2013 Q1	3,687.8	524.5	4,212.2	244.1	9,698.6	780.0	10,722.7	3,875.9	1,987.5	507.6	95.7	6,466.6	-47.2	-2,461.8	364.2	-2,144.8	19,256.8	11,123.7	1,376.7	12,500.4	10,296.5	1,180.2	11,476.7	227.1	20,507.5
Q2	3,313.9	526.5	3,840.4	245.2	9,057.5	980.4	10,283.1	3,919.5	2,564.7	615.6	96.6	7,196.3	-22.3	-798.8	924.9	103.9	21,423.7	9,388.2	1,701.6	11,089.9	10,872.4	1,303.7	12,176.1	594.0	20,931.5
Q3	3,219.5	530.4	3,750.0	248.5	8,869.7	841.3	9,959.5	3,960.7	2,436.4	411.2	97.1	6,905.4	-14.2	23.5	-504.8	-495.5	20,119.4	11,648.4	1,765.1	13,413.6	10,924.6	1,326.2	12,250.7	-365.1	20,917.2
Q4	3,838.2	536.7	4,374.9	252.0	9,409.8	828.4	10,490.2	3,991.0	2,502.6	529.3	97.8	7,120.7	-22.9	495.0	571.3	1,043.4	23,029.0	9,676.1	1,727.3	11,403.4	11,948.9	1,106.7	13,055.6	347.7	21,724.5
2014 Q1	3,894.1	555.1	4,449.2	254.4	9,764.2	828.7	10,847.3	4,036.1	2,406.2	529.2	98.0	7,069.5	-48.5	-328.1	-137.5	-514.1	21,852.0	10,155.9	1,791.0	11,946.9	11,277.9	1,211.3	12,489.2	-118.9	21,190.8
Q2	3,986.8	529.8	4,516.6	255.5	8,943.7	893.2	10,092.4	4,099.6	2,168.3	577.6	98.1	6,943.5	-47.1	-182.7	-715.8	-945.6	20,607.0	12,308.3	1,747.2	14,055.5	11,150.2	1,116.0	12,266.3	-508.4	21,887.7
Q3	3,872.3	535.9	4,408.1	258.1	8,970.3	907.4	10,135.8	4,092.9	1,769.5	551.8	98.2	6,512.3	-18.7	425.2	-573.5	-167.0	20,889.2	11,755.5	1,844.3	13,599.8	10,764.8	1,121.9	11,886.8	-423.6	22,178.7
Q4	3,998.0	549.5	4,547.5	261.2	9,582.4	888.7	10,732.3	4,135.5	2,801.1	534.8	99.5	7,571.0	36.7	-486.3	-327.1	-776.7	22,074.1	10,706.4	1,871.4	12,577.8	10,715.9	1,345.5	12,061.4	-278.3	22,312.2
2015 Q1	3,987.7	571.3	4,559.0	262.9	9,914.7	891.9	11,069.5	4,139.6	2,403.6	462.5	102.3	7,108.0	119.1	56.7	-1,099.7	-924.0	21,812.4	11,434.7	1,577.7	13,012.4	11,079.2	1,165.4	12,244.5	-810.9	21,769.4
Q2	4,050.5	561.6	4,612.1	264.0	9,368.4	897.2	10,529.6	4,231.8	2,822.9	512.6	95.4	7,662.7	161.5	104.8	-907.1	-640.7	22,163.6	11,468.3	1,868.0	13,336.2	11,891.8	1,096.3	12,988.1	-696.8	21,814.9
Q3	3,953.2	571.5	4,524.8	266.4	9,747.5	880.6	10,894.6	4,273.1	3,076.9	522.9	98.4	7,971.4	163.9	105.8	753.4	1,023.2	24,413.9	6,462.1	1,892.6	8,354.7	11,075.6	1,123.1	12,198.7	401.6	20,971.5
Q4	4,103.7	575.6	4,679.3	268.5	9,809.7	879.3	10,957.5	4,276.1	2,874.5	561.7	102.0	7,814.3	126.5	2,399.2	-863.3	1,662.3	25,113.4	6,717.6	1,830.8	8,548.4	10,276.7	1,175.8	11,452.5	-684.3	21,525.0
2016 Q1	4,031.8	595.6	4,627.4	270.4	10,170.8	910.8	11,352.0	4,321.1	2,519.7	412.6	104.6	7,358.0	49.0	-1,837.9	251.8	-1,537.0	21,800.3	9,988.4	1,785.3	11,773.7	10,704.9	840.4	11,545.2	248.3	22,277.1
Q2	4,076.5	588.7	4,665.2	271.9	9,355.1	909.1	10,536.0	4,435.8	3,132.0	501.6	99.0	8,168.5	-9.1	-375.3	-2,574.4	-2,958.7	20,411.0	13,314.1	1,745.7	15,059.8	10,880.3	1,144.2	12,024.6	-779.4	22,666.8
Q3	3,842.0	598.3	4,440.2	275.5	9,994.0	909.4	11,178.8	4,432.5	2,929.0	594.9	101.6	8,058.0	-47.8	-474.0	-1,206.6	-1,728.4	21,948.6	10,068.5	1,738.4	11,806.9	9,582.2	948.8	10,531.0	-815.0	22,409.5
Q4	4,118.1	608.7	4,726.8	275.5	10,231.3	846.7	11,353.5	4,436.8	3,080.9	462.6	105.0	8,085.3	-67.1	207.7	-389.3	-248.7	23,916.8	8,615.5	2,023.0	10,638.6	10,209.7	1,532.5	11,742.2	-391.6	22,421.6
2017 Q1	4,029.0	617.8	4,646.8	276.2	10,244.6	867.8	11,388.6	4,482.7	2,607.8	435.4	106.4	7,632.3	-67.1	-5.8	-1,684.3	-1,757.2	21,910.5	10,012.8	1,806.4	11,819.2	9,530.8	1,414.0	10,944.7	-318.6	22,466.3

Note: 2014-2016 estimates are provisional