

STATISTICS BOTSWANA

GROSS DOMESTIC PRODUCT



Second Quarter 2018

Copyrights © Statistics Botswana 2018

Table of Contents

1.	Preface	3
2.	Gross Domestic Product (GDP)	4
2.1	Revisions in this Release	4
2.2	Second Quarter GDP	4
2.2.1	Production Account	4
2.2.2	Components of GDP by Type of Expenditure	6
Figure 1: Real GDP growth rates		5
Figure 2: Components of Gross Domestic Expenditure at 2006 prices		6

Statistical Tables

Table 1: Value Added by Kind of Economic Activity at Current Prices (P million)	8
Table 2: Contribution of Gross Value Added to GDP by Kind of Economic Activity at Current Prices)	10
Table 3: Value Added by Kind of Economic Activity at Constant 2006 Prices (P million)	12
Table 4: Percentage Change in Gross Value Added by Kind of Economic Activity at constant 2006 Prices	14
Table 5: Gross Domestic Product by Type of Expenditure at Current Prices (P million)	16
Table 6: Gross Domestic Product by Type of Expenditure at Constant Prices (P million)	20

1. Preface

The statistical release contains the second quarter of 2018 Gross Domestic Product estimates by economic activity, components of final demand at current and constant prices.

Botswana's National Accounts are compiled according to the 1993 System of National Accounts (1993 SNA). The accounts presented in this publication adhere to the enhanced General Data Dissemination System (e-GDDS) of the International Monetary Fund (IMF), which sets out standards on coverage, periodicity and timeliness of data.

The estimates are provisional and subject to change. First estimates are normally based on limited data and hence cannot be precise and absolute. The figures are revised after receiving finalized or audited data from companies in which some differences and inconsistencies in the previously published data may be observed.


These estimates are not seasonally adjusted hence the variations may differ depending on the quarters.

Gross Domestic Product (GDP) for the second quarter of 2018 reached P47, 362.7 million compared to P46, 152.5 million registered during the previous quarter. This represents a quarterly increase of 2.6 percent in nominal terms between the two periods. During the quarter under review, Trade, Hotels & Restaurants remained the major contributor to GDP by 20.7 percent followed by Mining & quarrying, Finance & Business services and General Government at 16.3, 14.2 and 13.8 percent respectively. The contribution of other sectors was below 6.0 percent with Water & Electricity being the lowest at 1.1 percent.

Real Gross Domestic Product for the second quarter of 2018 increased by 5.3 percent. The increase was attributed to the significant growth in real value added of Trade, Hotels & Restaurants & Mining by 19.1 and 7.3 percent respectively.

Statistics Botswana acknowledges and appreciates the contribution of all stakeholders in the production of this report.

For more information and further enquiries, contact the Directorate of Stakeholder Relations at 3671300 or info@statsbots.org.bw. All Statistics Botswana outputs/publications are available on the website at www.statsbots.org.bw and at the Statistics Botswana Information Resource Center (Head-Office, Gaborone).


Dr. Burton S. Mguni
Statistician General
September 2018

2. Gross Domestic Product (GDP)

2.1 Revisions in this release

There are no revisions made to figures published in June 2018

Table A1: Key figures

	Real Gross Domestic Product		Total Final Consumption		Gross Fixed Capital Formation	
	Percentage Change					
	Quarter-on-Quarter	Year-on-Year	Quarter-on-Quarter	Year-on-Year	Quarter-on-Quarter	Year-on-Year
First quarter 2013	3.5	9.8	1.5	32.4	-7.5	-1.8
Second quarter 2013	2.1	12.6	-5.4	13.2	11.3	9.6
Third quarter 2013	-0.1	13.4	-2.9	2.9	-4.0	-1.4
Fourth quarter 2013	3.9	9.7	8.4	1.1	3.1	1.9
First quarter 2014	-2.5	3.3	2.9	2.4	-0.7	9.3
Second quarter 2014	3.3	4.6	-4.5	3.4	-1.8	-3.5
Third quarter 2014	1.3	6.0	-0.5	6.1	-6.2	-5.7
Fourth quarter 2014	0.6	2.7	5.0	2.8	16.3	6.3
First quarter 2015	-2.4	2.8	2.2	2.1	-6.1	0.5
Second quarter 2015	0.2	-0.3	-3.1	3.6	7.8	10.4
Third quarter 2015	-3.9	-5.4	1.9	6.0	4.0	22.4
Fourth quarter 2015	2.6	-3.6	1.5	2.5	-2.0	3.2
First quarter 2016	3.5	2.3	2.3	2.6	-5.8	3.5
Second quarter 2016	1.8	3.9	-4.9	0.7	11.0	6.6
Third quarter 2016	-1.1	6.9	3.8	2.6	-1.4	1.1
Fourth quarter 2016	0.2	4.3	1.9	3.0	0.3	3.5
First quarter 2017	0.1	0.9	1.4	2.1	-12.6	-3.9
Second quarter 2017	1.9	1.0	-2.2	4.9	-4.2	-17.1
Third quarter 2017	-1.0	1.1	4.4	5.5	7.6	-9.5
Fourth quarter 2017	5.5	6.5	1.8	5.3	4.3	-5.9
First quarter 2018	-1.5	4.8	0.4	4.3	-4.1	3.2
Second quarter 2018	2.4	5.3	1.0	7.8	3.4	11.3

2.2 Second quarter GDP

2.2.1 Production Account

The estimated GDP at current prices for the second quarter of 2018 was P47, 362.7 million compared to P46, 152.5 million registered in the first quarter of 2018 (See table 1).

The estimated GDP at constant 2006 prices for the second quarter of 2018 was P24, 099.0 million compared to P23, 545.0 million recorded in the first quarter of 2018 (See table 3).

The domestic economy increased by 5.3 percent in the second quarter of 2018 compared to an increase of 1.0 percent recorded in the same quarter of 2017. The increase was attributed to real value added of Trade, Hotels & Restaurants, Mining, Finance & Business Services and Transport & Communications which increased by 8.8, 7.4, 6.1 and 5.9 percent respectively. All other industries recorded positive growths of more than 2.5 percent with the exception of Water & Electricity which decreased by 7.4 percent (See table 4).

Trade, Hotels and Restaurants real value added increased by 8.8 percent in the second quarter of 2018 compared to an increase of 2.5 percent registered in the same quarter of the previous year. The positive growth is attributed to an increase in real value added of wholesale, Retail Trade and Hotels & Restaurants sub sectors by 19.1, 7.3 and 6.8 percent respectively. The significant increase in the Wholesale value added is due to positive performance of downstream diamond industries during the quarter under review.

The increase in the real Mining value added of 7.4 percent was mainly driven by Diamond value added which increased by 6.4 percent. Diamond production in carats increased by 6.4 percent in the second quarter of 2018 compared to an increase of 12.9 percent recorded in the same quarter of 2017. Diamond prices continued to show improvement during the second quarter of 2018.

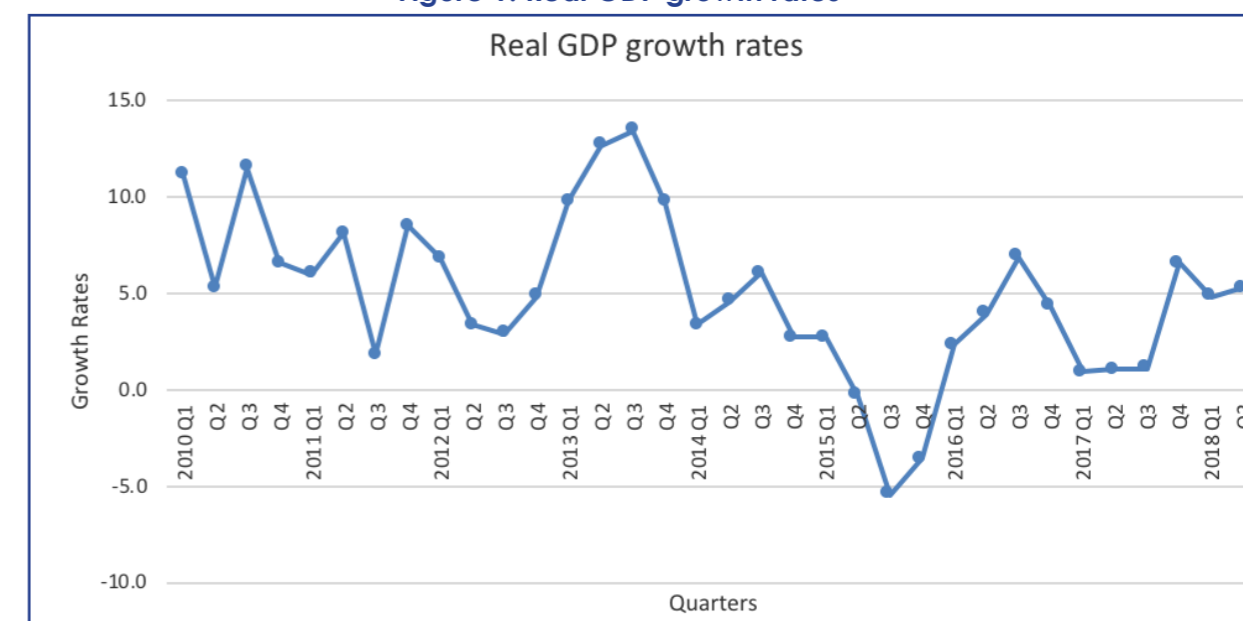
The increase of 6.1 percent in the real value added of the Finance and Business Services industry was mainly due to the rise in the value added of Business Services, Real Estate and Banks by 6.9, 6.7 and 5.6 percent respectively.

Transport and Communications value added increased by 5.9 percent in the second quarter of 2018. The growth was mainly attributed to the increase in real value added of Post & Communications, Road and Air transport by 7.6, 5.8 and 5.0 percent respectively.

Water and Electricity value added at constant 2006 prices for the second quarter of 2018 was P170.1 million compared to P183.7 million registered in the same quarter of 2017, recording a decrease of 7.4 percent. In the second quarter of 2018, Electricity recorded a negative value added of P55.1 million compared to a negative value added of P45.8 million registered in the same quarter of 2017. Water sector value added decreased by 1.9 percent compared to 9.8 percent increase recorded during the same quarter of the previous year. Water consumption in kilolitres from all Management Centers went down by 2.0 percent.

Non-mining GDP increased by 5.0 percent in the second quarter of 2018 compared to 3.1 percent registered in the same quarter of the previous year.

Figure 1: Real GDP growth rates



2.2.2 Components of GDP by Type of Expenditure

The total final consumption expenditure recorded an increase of 7.8 percent in the second quarter of 2018, whereas in the same quarter of the previous year it rose by 4.9 percent. Household final consumption increased by 10.0 percent, Government final consumption increased by 3.0 percent and Fixed capital formation increased by 11.3 percent in the quarter under review.

In the case of foreign trade, real exports of goods and services decreased by 4.0 percent in the second quarter of 2018 compared to a decrease of 14.7 percent realized in the same quarter of 2017.

Imports of goods and services recorded an increase of 10.6 percent during the quarter under review, compared to 32.6 percent decline realized in the same quarter of the previous year.

Figure 2: Components of Gross Domestic Expenditure at 2006 prices

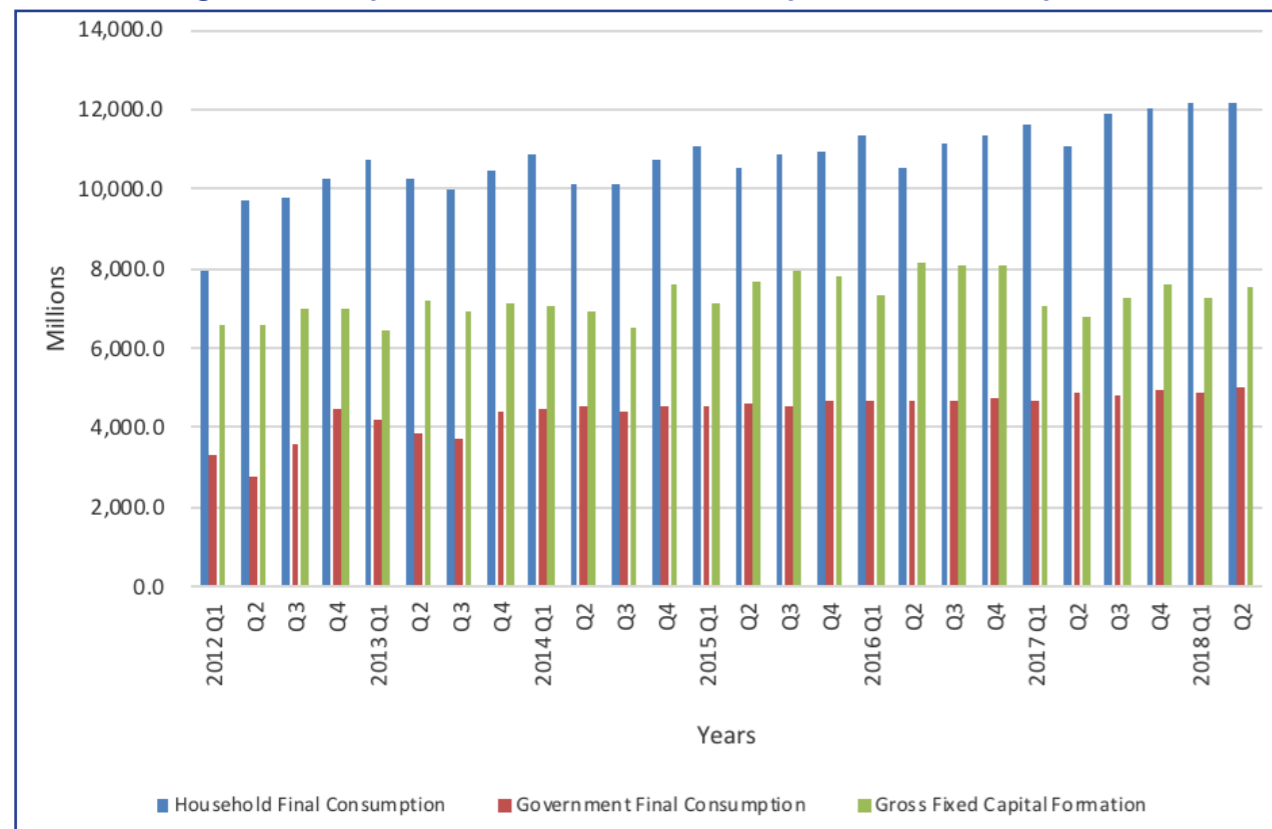


Table A2: GDP per capita (Pula)

Year	Nominal GDP per capita	Real GDP per capita
1994	7,869.2	22,793.4
1995	8,800.8	23,789.8
1996	10,550.8	24,562.5
1997	11,707.1	25,958.7
1998	12,615.7	25,437.9
1999	15,627.3	27,583.6
2000	17,991.2	27,814.8
2001	19,077.2	27,229.8
2002	20,097.5	28,349.6
2003	21,311.8	29,113.9
2004	23,650.1	29,350.0
2005	28,026.8	30,121.2
2006	32,038.3	32,038.3
2007	35,727.9	34,050.1
2008	39,021.1	35,509.2
2009	37,656.1	32,186.9
2010	43,705.9	34,298.6
2011	51,844.3	35,702.1
2012	53,116.0	36,507.0
2013	59,313.9	39,846.8
2014	67,867.9	40,743.3
2015	66,821.8	39,380.8
2016	76,852.2	40,454.8
2017	79,908.0	40,779.4

Table 1: Value Added by Kind of Economic Activity at Current Prices (P million)

Calendar year	Agriculture	Mining	Manufacturing	Water & Electricity	Construction	Trade, Hotels & Restaurants	Transport & Communications	Finance & Business Services	General Government	Social & Personal Services	Value Added	Taxes on Import	Other Taxes on products	Subsidies	Total GDP
2004	949.9	10,801.5	2,334.8	806.8	2,376.3	5,116.3	1,449.5	5,330.5	6,151.8	2,110.2	37,427.5	2,746.9	2,086.7	-224.6	42,036.6
2005	927.9	16,105.1	2,512.0	714.9	2,417.8	5,498.9	1,825.1	5,918.6	7,195.5	2,544.4	45,660.2	3,174.9	2,172.2	-255.1	50,752.2
2006	1,210.7	19,019.0	3,123.1	785.1	2,838.0	7,032.3	2,250.5	6,675.4	7,818.5	2,938.9	53,691.6	3,428.8	2,276.3	-289.8	59,106.9
2007	1,504.7	19,567.7	4,206.6	751.5	3,544.1	8,243.6	2,697.3	7,653.0	8,887.4	3,255.8	60,311.7	4,290.5	2,879.7	-329.2	67,152.7
2008	1,887.5	18,643.5	4,278.9	654.1	3,726.9	10,047.1	3,303.9	9,316.7	10,899.5	3,847.4	66,605.5	4,701.4	3,788.1	-374.0	74,720.9
2009	2,071.0	11,209.6	4,662.3	317.2	4,495.0	11,162.8	3,993.0	9,694.7	12,316.3	4,593.3	64,515.2	4,535.3	4,836.6	-424.9	73,462.3
2010	2,161.3	16,660.8	5,548.3	411.9	5,056.1	13,084.3	4,470.8	11,609.7	13,377.3	5,242.7	77,623.1	4,425.0	5,252.1	-432.7	86,867.5
2011	2,636.0	24,529.1	6,074.2	-58.8	6,247.3	15,595.3	5,113.9	13,978.7	14,777.6	5,881.2	94,774.4	5,055.4	5,598.3	-448.3	104,979.8
2012	2,961.3	19,286.5	6,523.2	-621.2	7,464.5	16,896.7	6,325.3	16,467.8	16,923.7	6,750.2	98,978.1	5,560.5	5,804.8	-472.9	109,870.4
2013	2,876.9	24,243.4	7,285.1	-123.2	7,997.9	21,211.3	6,906.2	17,717.0	17,731.0	7,344.1	113,189.7	6,403.1	6,083.2	-517.7	125,158.3
2014	3,045.3	32,403.3	7,740.3	-581.5	8,689.7	26,182.3	7,788.2	19,284.3	19,946.0	8,138.4	132,636.4	7,107.4	6,691.5	-566.6	145,868.6
2015	3,214.5	25,962.2	8,441.7	-219.2	9,606.6	23,711.4	8,559.3	21,517.5	22,491.1	8,653.0	131,938.1	7,541.6	7,205.1	-619.0	146,065.8
2016	3,496.1	34,912.5	8,860.2	395.0	10,574.9	31,021.1	9,642.7	23,349.1	23,926.8	9,259.3	155,437.8	8,054.3	7,782.0	-685.2	170,588.9
2017	3,583.8	32,537.8	9,237.8	1,236.2	11,487.6	35,307.5	10,622.7	25,047.6	24,838.0	9,899.4	163,798.3	8,656.3	8,378.5	-720.4	180,112.7
2018	3,672.1	31,111.1	9,541.1	1,311.1	11,711.1	34,811.1	10,811.1	25,111.1	24,911.1	9,999.9	165,111.1	8,711.1	8,411.1	-711.1	180,112.7
2019	3,761.1	30,111.1	9,641.1	1,381.1	11,811.1	34,911.1	10,911.1	25,211.1	25,011.1	10,099.9	166,111.1	8,811.1	8,511.1	-701.1	180,112.7
2020	3,850.1	29,111.1	9,741.1	1,451.1	11,911.1	35,011.1	11,011.1	25,311.1	25,111.1	10,199.9	167,111.1	8,911.1	8,611.1	-691.1	180,112.7
2021	3,939.1	28,111.1	9,841.1	1,521.1	12,011.1	35,111.1	11,111.1	25,411.1	25,211.1	10,299.9	168,111.1	9,011.1	8,711.1	-681.1	180,112.7
2022	4,028.1	27,111.1	9,941.1	1,591.1	12,111.1	35,211.1	11,211.1	25,511.1	25,311.1	10,399.9	169,111.1	9,111.1	8,811.1	-671.1	180,112.7
2023	4,117.1	26,111.1	10,041.1	1,661.1	12,211.1	35,311.1	11,311.1	25,611.1	25,411.1	10,499.9	170,111.1	9,211.1	8,911.1	-661.1	180,112.7
2024	4,206.1	25,111.1	10,141.1	1,731.1	12,311.1	35,411.1	11,411.1	25,711.1	25,511.1	10,599.9	171,111.1	9,311.1	9,011.1	-651.1	180,112.7
2025	4,295.1	24,111.1	10,241.1	1,801.1	12,411.1	35,511.1	11,511.1	25,811.1	25,611.1	10,699.9	172,111.1	9,411.1	9,111.1	-641.1	180,112.7
2026	4,384.1	23,111.1	10,341.1	1,871.1	12,511.1	35,611.1	11,611.1	25,911.1	25,711.1	10,799.9	173,111.1	9,511.1	9,211.1	-631.1	180,112.7
2027	4,473.1	22,111.1	10,441.1	1,941.1	12,611.1	35,711.1	11,711.1	26,011.1	25,811.1	10,899.9	174,111.1	9,611.1	9,311.1	-621.1	180,112.7
2028	4,562.1	21,111.1	10,541.1	2,011.1	12,711.1	35,811.1	11,811.1	26,111.1	25,911.1	10,999.9	175,111.1	9,711.1	9,411.1	-611.1	180,112.7
2029	4,651.1	20,111.1	10,641.1	2,081.1	12,811.1	35,911.1	11,911.1	26,211.1	26,011.1	11,099.9	176,111.1	9,811.1	9,511.1	-601.1	180,112.7
2030	4,740.1	19,111.1	10,741.1	2,151.1	12,911.1	36,011.1	12,011.1	26,311.1	26,111.1	11,199.9	177,111.1	9,911.1	9,611.1	-591.1	180,112.7
2031	4,829.1	18,111.1	10,841.1	2,221.1	13,011.1	36,111.1	12,111.1	26,411.1	26,211.1	11,299.9	178,111.1	10,011.1	9,711.1	-581.1	180,112.7
2032	4,918.1	17,111.1	10,941.1	2,291.1	13,111.1	36,211.1	12,211.1	26,511.1	26,311.1	11,399.9	179,111.1	10,111.1	9,811.1	-571.1	180,112.7
2033	5,007.1	16,111.1	11,041.1	2,361.1	13,211.1	36,311.1	12,311.1	26,611.1	26,411.1	11,499.9	180,111.1	10,211.1	9,911.1	-561.1	180,112.7
2034	5,096.1	15,111.1	11,141.1	2,431.1	13,311.1	36,411.1	12,411.1	26,711.1	26,511.1	11,599.9	181,111.1	10,311.1	10,011.1	-551.1	180,112.7
2035	5,185.1	14,111.1	11,241.1	2,501.1	13,411.1	36,511.1	12,511.1	26,811.1	26,611.1	11,699.9	182,111.1	10,411.1	10,111.1	-541.1	180,112.7
2036	5,274.1	13,111.1	11,341.1	2,571.1	13,511.1	36,611.1	12,611.1	26,911.1	26,711.1	11,799.9	183,111.1	10,511.1	10,211.1	-531.1	180,112.7
2037	5,363.1	12,111.1	11,441.1	2,641.1	13,611.1	36,711.1	12,711.1	27,011.1	26,811.1	11,899.9	184,111.1	10,611.1	10,311.1	-521.1	180,112.7
2038	5,452.1	11,111.1	11,541.1	2,711.1	13,711.1	36,811.1	12,811.1	27,111.1	26,911.1	11,999.9	185,111.1	10,711.1	10,411.1	-511.1	180,112.7
2039	5,541.1	10,111.1	11,641.1	2,781.1	13,811.1	36,911.1	12,911.1	27,211.1	27,011.1	12,099.9	186,111.1	10,811.1	10,511.1	-501.1	180,112.7
2040	5,630.1	9,111.1	11,741.1	2,851.1	13,911.1	37,011.1	13,011.1	27,311.1	27,111.1	12,199.9	187,111.1	10,911.1	10,611.1	-491.1	180,112.7
2041	5,719.1	8,111.1	11,841.1	2,921.1	14,011.1	37,111.1	13,111.1	27,411.1	27,211.1	12,299.9	188,111.1	11,011.1	10,711.1	-481.1	180,112.7
2042	5,808.1	7,111.1	11,941.1	2,991.1	14,111.1	37,211.1	13,211.1	27,511.1	27,311.1	12,399.9	189,111.1	11,111.1	10,811.1	-471.1	180,112.7
2043	5,897.1	6,111.1	12,041.1	3,061.1	14,211.1	37,311.1	13,311.1	27,611.1	27,411.1	12,499.9	190,111.1	11,211.1	10,911.1	-461.1	180,112.7
2044	5,986.1	5,111.1	12,141.1	3,131.1	14,311.1	37,411.1	13,411.1	27,711.1	27,511.1	12,599.9	191,111.1	11,311.1	11,011.1	-451.1	180,112.7
2045	6,075.1	4,111.1	12,241.1	3,201.1	14,411.1	37,511.1	13,511.1	27,811.1	27,611.1	12,699.9	192,111.1	11,411.1	11,111.1	-441.1	180,112.7
2046	6,164.1	3,111.1	12,341.1	3,271.1	14,511.1	37,611.1	13,611.1	27,911.1	27,711.1	12,799.9	193,111.1	11,511.1	11,211.1	-431.1	180,112.7
2047	6,253.1	2,111.1	12,441.1	3,341.1	14,611.1	37,711.1	13,711.1	28,011.1	27,811.1	12,899.9	194,111.1	11,611.1	11,311.1	-421.1	180,112.7
2048	6,342.1	1,111.1	12,541.1	3,411.1	14,711.1	37,811.1	13,811.1	28,111.1	27,911.1	12,999.9	195,111.1	11,711.1	11,411.1	-411.1	180,112.7
2049	6,431.1	0,111.1	12,641.1	3,481.1	14,811.1	37,911.1	13,911.1	28,211.1	28,011.1	13,099.9	196,111.1	11,811.1	11,511.1	-401.1	180,112.7
2050	6,520.1	0,111.1	12,741.1	3,551.1	14,911.1	38,011.1	14,011.1	28,311.1	28,111.1	13,199.9	197,111.1	11,911.1	11,611.1	-391.1	180,112.7

Table 1 Continued: Value Added by Kind of Economic Activity at Current Prices (P million)

Calendar year	Agriculture	Mining	Manufacturing	Water & Electricity	Construction	Trade, Hotels & Restaurants	Transport & Communications	Finance & Business Services	General Government	Social & Personal Services	Value Added	Taxes on Import	Other Taxes on products	Subsidies	Total GDP
2011 Q1	499.9	5,824.8	1,362.8	-0.1	1,424.7	3,821.3	1,201.2	3,162.6	3,021.0	1,328.4	21,646.7	897.4	1,433.1	-114.3	23,862.8
Q2	667.8	6,113.8	1,426.5	-11.2	1,472.6	3,716.6	1,235.1	3,352.9	3,725.1	1,441.8	23,141.1	1,412.1	1,473.4	-102.2	25,924.5
Q3	716.1	6,598.8	1,585.0	-39.6	1,638.1	3,839.1	1,324.9	3,624.8	3,677.8	1,492.5	24,457.6	1,412.0	1,201.6	-113.9	26,957.3
Q4	752.2	5,991.6	1,699.8	-7.9	1,711.8	4,218.3	1,352.7	3,838.5	4,353.7	1,618.4	25,529.1	1,333.9	1,490.2	-117.9	28,235.3
2012 Q1	728.0	4,617.1	1,601.4	-23.3	1,830.9	4,211.2	1,509.2	3,790.4	3,681.4	1,609.6	23,555.9	1,235.0	1,368.9	-115.8	26,044.1
Q2	796.0	5,524.0	1,627.7	-265.7	1,859.2	4,173.6	1,564.6	4,072.5	4,145.2	1,687.8	25,184.9	1,267.2	1,390.5	-116.6	27,726.0
Q3	808.9	4,443.1	1,668.5	-167.5	1,878.9	4,258.9	1,617.1	4,235.0	4,268.4	1,709.6	24,721.0	1,431.0	1,509.0	-119.2	27,541.9
Q4	628.4	4,702.3	1,625.6	-164.7	1,895.5	4,253.0	1,634.4	4,369.9	4,828.7	1,743.1	25,516.2	1,627.2	1,536.4	-121.4	28,558.5
2013 Q1	649.3	4,670.9	1,725.8	-4.6	1,954.4	4,822.2	1,661.8	4,296.6	3,981.5	1,742.6	25,500.5	1,580.3	1,468.5	-124.4	28,424.9
Q2	780.6	7,934.2	1,784.4	-126.2	1,988.8	5,006.8	1,677.4	4,377.4	4,346.3	1,833.7	29,603.4	1,511.0	1,472.5	-125.6	32,461.3
Q3	704.0	6,123.9	1,8												

Table 2: Contribution of Gross Value Added to GDP by Kind of Economic Activity at Current Prices

Calendar year	Agriculture	Mining	Manufacturing	Water & Electricity	Construction	Trade, Hotels & Restaurants	Transport & Communications	Finance & Business Services	General Government	Social & Personal Services	Value Added	Taxes on Import	Other Taxes on products	Subsidies	Total GDP
2004	2.3	25.7	5.6	1.9	5.7	12.2	3.4	12.7	14.6	5.0	89.0	6.5	5.0	-0.5	100.0
2005	1.8	31.7	4.9	1.4	4.8	10.8	3.6	11.7	14.2	5.0	90.0	6.3	4.3	-0.5	100.0
2006	2.0	32.2	5.3	1.3	4.8	11.9	3.8	11.3	13.2	5.0	90.8	5.8	3.9	-0.5	100.0
2007	2.2	29.1	6.3	1.1	5.3	12.3	4.0	11.4	13.2	4.8	89.8	6.4	4.3	-0.5	100.0
2008	2.5	25.0	5.7	0.9	5.0	13.4	4.4	12.5	14.6	5.1	89.1	6.3	5.1	-0.5	100.0
2009	2.8	15.3	6.3	0.4	6.1	15.2	5.4	13.2	16.8	6.3	87.8	6.2	6.6	-0.6	100.0
2010	2.5	19.2	6.4	0.5	5.8	15.1	5.1	13.4	15.4	6.0	89.4	5.1	6.0	-0.5	100.0
2011	2.5	23.4	5.8	-0.1	6.0	14.9	4.9	13.3	14.1	5.6	90.3	4.8	5.3	-0.4	100.0
2012	2.7	17.6	5.9	-0.6	6.8	15.4	5.8	15.0	15.4	6.1	90.1	5.1	5.3	-0.4	100.0
2013	2.3	19.4	5.8	-0.1	6.4	16.9	5.5	14.2	14.2	5.9	90.4	5.1	4.9	-0.4	100.0
2014	2.1	22.2	5.3	-0.4	6.0	17.9	5.3	13.2	13.7	5.6	90.9	4.9	4.6	-0.4	100.0
2015	2.2	17.8	5.8	-0.2	6.6	16.2	5.9	14.7	15.4	5.9	90.3	5.2	4.9	-0.4	100.0
2016	2.0	20.5	5.2	0.2	6.2	18.2	5.7	13.7	14.0	5.4	91.1	4.7	4.6	-0.4	100.0
2017	2.0	18.1	5.1	0.7	6.4	19.6	5.9	13.9	13.8	5.5	90.9	4.8	4.7	-0.4	100.0
2004 Q1	1.8	26.5	5.6	1.8	5.9	12.3	3.4	12.3	13.9	5.0	88.5	5.4	6.6	-0.5	100.0
Q2	3.5	14.9	6.4	2.1	6.5	14.3	3.7	13.8	16.8	5.7	87.6	8.5	4.5	-0.6	100.0
Q3	2.3	31.8	5.0	1.8	5.3	11.2	3.3	12.1	14.0	4.7	91.4	6.3	2.8	-0.5	100.0
Q4	1.6	27.4	5.4	2.0	5.1	11.4	3.5	12.7	14.2	4.9	88.3	6.3	5.9	-0.5	100.0
2005 Q1	1.8	32.7	4.9	1.3	4.7	10.0	3.3	11.4	13.1	4.8	88.0	6.5	6.0	-0.5	100.0
Q2	2.3	26.4	5.6	1.6	5.3	11.9	3.7	12.8	15.2	5.5	90.4	6.5	3.8	-0.6	100.0
Q3	2.0	37.6	4.5	1.3	4.3	9.9	3.5	10.7	13.1	4.7	91.6	4.6	4.3	-0.4	100.0
Q4	1.2	28.9	5.0	1.5	4.8	11.7	3.9	12.0	15.5	5.2	89.8	7.7	3.0	-0.5	100.0
2006 Q1	2.5	32.0	5.1	1.2	4.7	12.0	3.7	11.8	12.3	5.1	90.5	5.5	4.5	-0.5	100.0
Q2	2.0	26.2	5.5	1.3	5.2	12.9	4.2	12.5	15.2	5.5	90.3	6.4	3.8	-0.6	100.0
Q3	2.2	35.4	5.0	1.3	5.0	11.0	3.5	10.7	12.5	4.7	91.3	5.9	3.3	-0.4	100.0
Q4	1.6	34.0	5.6	1.5	4.4	11.9	3.9	10.5	13.2	4.7	91.1	5.5	3.9	-0.5	100.0
2007 Q1	2.0	31.4	6.0	1.2	4.9	12.2	3.8	12.1	12.8	4.8	91.4	5.2	3.9	-0.5	100.0
Q2	3.0	23.8	6.9	1.2	5.4	12.9	4.2	12.1	14.3	5.0	89.0	7.3	4.3	-0.5	100.0
Q3	2.5	33.3	5.9	1.0	4.9	11.0	3.8	10.7	12.4	4.6	90.0	6.3	4.1	-0.4	100.0
Q4	1.5	27.5	6.3	1.0	5.9	13.1	4.2	10.9	13.5	5.0	88.9	6.8	4.8	-0.5	100.0
2008 Q1	2.4	28.4	5.4	0.9	4.9	13.0	4.5	11.6	13.3	5.1	89.4	6.5	4.6	-0.5	100.0
Q2	2.6	20.7	6.5	0.9	5.3	14.2	4.7	12.6	16.1	5.2	88.8	6.8	4.9	-0.6	100.0
Q3	2.8	26.8	5.6	0.8	4.7	12.8	4.2	12.5	14.2	5.0	89.4	5.9	5.2	-0.5	100.0
Q4	2.3	23.7	5.5	0.9	5.1	13.8	4.4	13.1	14.8	5.2	88.9	6.1	5.5	-0.5	100.0
2009 Q1	2.6	11.8	6.6	0.5	6.4	16.4	5.5	14.3	17.4	6.8	88.2	6.1	6.3	-0.6	100.0
Q2	2.9	17.5	6.4	0.4	6.1	15.4	5.1	12.6	16.5	6.0	88.8	5.8	5.9	-0.6	100.0
Q3	3.3	13.6	6.2	0.4	6.5	15.4	5.6	12.9	17.1	6.5	87.3	6.3	7.0	-0.6	100.0
Q4	2.6	17.6	6.2	0.5	5.6	13.8	5.6	13.1	16.2	5.9	87.0	6.5	7.1	-0.6	100.0
2010 Q1	2.5	16.5	6.5	0.7	5.9	15.0	5.3	13.8	16.0	6.4	88.6	5.5	6.4	-0.5	100.0
Q2	2.8	18.0	6.5	0.5	5.5	15.6	5.2	13.8	15.2	6.2	89.3	5.0	6.2	-0.5	100.0
Q3	2.5	22.0	6.1	0.4	5.8	15.1	5.0	12.6	14.4	5.9	89.9	4.8	5.7	-0.5	100.0
Q4	2.1	19.7	6.5	0.4	6.0	14.5	5.1	13.4	16.0	5.7	89.5	5.1	5.9	-0.5	100.0
2011 Q1	2.1	24.4	5.7	0.0	6.0	16.0	5.0	13.3	12.7	5.6	90.7	3.8	6.0	-0.5	100.0
Q2	2.6	23.6	5.5	0.0	5.7	14.3	4.8	12.9	14.4	5.6	89.3	5.4	5.7	-0.4	100.0
Q3	2.7	24.5	5.9	-0.1	6.1	14.2	4.9	13.4	13.6	5.5	90.7	5.2	4.5	-0.4	100.0
Q4	2.7	21.2	6.0	0.0	6.1	14.9	4.8	13.6	15.4	5.7	90.4	4.7	5.3	-0.4	100.0

Table 2 Continued: Contribution of Gross Value Added to GDP by Kind of Economic Activity at Current Prices

Calendar year	Agriculture	Mining	Manufacturing	Water & Electricity	Construction	Trade, Hotels & Restaurants	Transport & Communications	Finance & Business Services	General Government	Social & Personal Services	Value Added	Taxes on Import	Other Taxes on products	Subsidies	Total GDP
2012 Q1	2.8	17.7	6.1	-0.1	7.0	16.2	5.8	14.6	14.1	6.2	90.4	4.7	5.3	-0.4	100.0
Q2	2.9	19.9	5.9	-1.0	6.7	15.1	5.6	14.7	15.0	6.1	90.8	4.6	5.0	-0.4	100.0
Q3	2.9	16.1	6.1	-0.6	6.8	15.5	5.9	15.4	15.5	6.2	89.8	5.2	5.5	-0.4	100.0
Q4	2.2	16.5	5.7	-0.6	6.6	14.9	5.7	15.3	16.9	6.1	89.3	5.7	5.4	-0.4	100.0
2013 Q1	2.3	16.4	6.1	0.0	6.9	17.0	5.8	15.1	14.0	6.1	89.7	5.6	5.2	-0.4	100.0
Q2	2.4	24.4	5.5	-0.4	6.1	15.4	5.2	13.5	13.4	5.6	91.2	4.7	4.5	-0.4	100.0
Q3	2.2	19.3	5.9	0.2	6.3	17.2	5.5	14.0	14.0	5.9	90.5	5.0	4.9	-0.4	100.0
Q4	2.3	16.9	5.9	-0.2	6.3	18.2	5.6	14.2	15.3	5.8	90.2	5.3	4.9	-0.4	100.0
2014 Q1	2.1	21.1	5.2	-0.9	6.2	18.5	5.6	13.4	13.7	5.7	90.6	5.1	4.7	-0.4	100.0
Q2	2.1	24.9	5.0	0.3	5.8	17.4	5.1	12.6	12.9	5.4	91.4	4.5	4.4	-0.4	100.0
Q3	2.1	20.2	5.5	-0.1	6.0	18.5	5.4	13.6	14.0	5.7	90.8	4.9	4.7	-0.4	100.0
Q4	2.1	22.5	5.5	-1.0	5.8	17.5	5.3	13.4	14.1	5.6	90.9	4.9	4.6	-0.4	100.0
2015 Q1	2.1	20.9	5.6	-0.8	6.4	16.8	5.5	13.8	14.7	5.8	90.8	5.0	4.6	-0.4	100.0
Q2	2.2	20.5	5.6	0.0	6.5	15.4	5.6	14.3	14.9	5.7	90.6	5.1	4.7	-0.4	100.0
Q3	2.1	18.6	5.7	0.0	6.4	15.5	5.9	14.7	15.5	5.8	90.3	5.2	5.0	-0.4	100.0
Q4	2.4	10.7	6.2	0.3	7.0	17.3	6.4	16.2	16.6	6.4	89.6	5.4	5.4	-0.5	100.0
2016 Q1	2.1	19.0	5.4	-0.2	6.4	17.4	5.7	14.1	15.0	5.7	90.6	5.1	4.7	-0.4	100.0
Q2	2.1	20.4	5.1	0.3	6.1	18.7	5.6	13.5	14.1	5.4	91.2	4.7	4.6	-0.4	100.0
Q3	2.0	22.0	5.1	0.0	6.1	18.2	5.6	13.4	13.7	5.3	91.4	4.5	4.5	-0.4	100.0
Q4	2.0	20.2	5.2	0.8	6.2	18.4	5.8	13.8	13.4	5.4	91.3	4.6	4.5	-0.4	100.0
2017 Q1	2.0	18.2	4.9	0.2	6.2	20.8	5.9	14.0	13.5	5.5	91.2	4.8	4.4	-0.4	100.0
Q2	2.0	18.1	5.1	0.8	6.3	19.5	5.9	13.8	14.0	5.5	91.0	4.8	4.6	-0.4	100.0
Q3	2.0	20.1	5.3	0.7	6.6	16.3	6.0	14.0	14.0	5.6	90.6	4.9	5.0	-0.4	100.0
Q4	2.0	16.0	5.2	0.9	6.4	21.7	5.9	13.9	13.6	5.4	91.0	4.7	4.7	-0.4	100.0
2018 Q1	2.0	16.6	5.0	0.9	6.5	19.8	6.1	14.3	13.8	5.6	90.7	5.0	4.7	-0.4	100.0
Q2	2.0	16.3	5.1	1.1	6.6	20.7	6.0	14.2	13.8	5.5	91.2	4.8	4.5	-0.4	100.0

Table 3: Value Added by Kind of Economic Activity at Constant 2006 Prices (P million)

Calendar year	Agriculture	Mining	Manufacturing	Water & Electricity	Construction	Trade, Hotels & Restaurants	Transport & Communications	Finance & Business Services	General Government	Social & Personal Services	Value Added	Taxes on Import	Other Taxes on products	Subsidies	Total GDP
2004	1,095.8	16,705.0	2,555.2	886.8	2,478.5	5,321.5	1,735.0	6,273.1	8,081.8	2,176.8	47,309.3	2,882.1	2,212.5	-236.1	52,167.7
2005	1,068.2	18,087.7	2,602.4	762.2	2,448.6	5,521.2	1,978.4	6,361.8	7,993.5	2,582.6	49,406.7	3,202.9	2,192.6	-257.4	54,544.8
2006	1,210.7	19,019.0	3,123.1	785.1	2,838.0	7,032.3	2,250.5	6,675.4	7,818.5	2,938.9	53,691.6	3,428.8	2,276.3	-289.8	59,106.9
2007	1,358.9	18,113.7	3,925.6	746.3	3,497.0	8,104.3	2,597.5	7,425.6	8,256.2	3,179.8	57,205.0	4,261.2	2,859.9	-327.0	63,999.1
2008	1,385.7	18,160.9	3,824.9	795.5	3,524.3	9,560.9	2,862.0	8,293.4	8,276.6	3,663.9	60,348.0	4,434.1	3,566.5	-352.6	67,996.1
2009	1,474.0	10,466.0	4,016.5	753.9	3,958.8	9,929.8	3,285.3	8,414.9	8,510.5	4,076.2	54,885.9	4,004.4	4,278.1	-375.6	62,792.8
2010	1,559.7	12,596.2	4,173.5	844.2	4,101.3	10,852.0	3,496.8	9,379.2	9,150.6	4,329.7	60,483.3	3,679.4	4,367.1	-359.8	68,170.1
2011	1,562.4	11,782.2	4,647.3	555.4	5,047.2	12,348.0	3,708.6	10,098.0	9,723.1	4,689.7	64,161.9	4,028.0	4,460.6	-357.2	72,293.3
2012	1,429.1	11,101.2	4,819.5	402.9	5,774.8	13,188.0	4,111.9	11,018.1	9,993.4	5,191.9	67,030.9	4,331.0	4,521.3	-368.4	75,514.8
2013	1,448.1	13,784.3	5,134.4	674.9	6,010.9	15,298.3	4,422.6	11,973.5	10,592.0	5,607.6	74,946.6	4,886.7	4,642.6	-395.1	84,080.7
2014	1,443.1	13,851.1	5,160.3	298.5	6,234.7	16,933.1	4,854.6	12,291.2	11,079.4	5,843.3	77,989.3	5,145.8	4,844.7	-410.3	87,569.5
2015	1,447.7	11,132.2	5,327.4	319.4	6,481.6	16,267.6	5,075.5	12,843.7	11,442.4	6,055.2	76,392.7	5,174.3	4,940.2	-424.6	86,082.6
2016	1,455.5	10,737.7	5,410.1	623.5	6,755.3	18,464.0	5,408.1	13,268.9	11,714.0	6,266.6	80,103.6	5,153.7	4,978.5	-438.3	89,797.5
2017	1,486.8	9,539.1	5,514.5	502.1	6,993.0	19,807.1	5,661.0	13,933.4	11,976.2	6,441.1	81,854.4	5,339.7	5,167.1	-444.4	91,916.8
2004 Q1	224.0	3,333.2	623.7	221.4	663.0	1,352.4	436.4	1,544.3	1,895.8	546.0	10,840.2	621.2	770.7	-58.0	12,174.0
2004 Q2	369.1	3,552.5	620.5	209.3	608.9	1,354.2	396.5	1,477.6	2,054.1	526.6	11,169.3	809.4	434.8	-60.5	12,353.1
2004 Q3	302.9	4,921.1	638.9	219.4	629.8	1,317.7	444.7	1,617.3	2,077.1	549.3	12,718.4	731.9	331.7	-55.7	13,726.4
2004 Q4	199.8	4,898.1	672.0	236.7	576.8	1,297.1	457.4	1,633.8	2,054.6	554.8	12,581.3	719.6	675.3	-62.0	13,914.2
2005 Q1	270.8	3,807.3	618.9	190.4	614.3	1,313.8	465.4	1,550.2	1,878.8	627.5	11,337.2	807.8	753.5	-59.0	12,839.5
2005 Q2	290.4	4,333.9	627.7	186.9	612.0	1,350.1	460.8	1,507.9	1,936.1	630.7	11,936.5	725.8	423.4	-65.8	13,019.9
2005 Q3	324.3	4,923.6	679.7	188.9	611.9	1,386.0	527.1	1,658.4	2,020.4	660.8	12,981.1	652.3	614.1	-62.7	14,184.8
2005 Q4	182.8	5,023.0	676.1	196.1	610.4	1,471.3	525.2	1,645.3	2,158.2	663.7	13,151.9	1,016.9	401.6	-69.9	14,500.6
2006 Q1	342.4	4,585.3	746.6	193.6	677.3	1,733.6	540.2	1,685.7	1,790.2	740.2	13,035.1	791.9	646.9	-68.5	14,405.4
2006 Q2	244.3	4,577.9	734.5	191.5	680.2	1,710.6	553.9	1,643.9	2,024.1	728.5	13,089.3	853.7	503.8	-74.5	14,372.3
2006 Q3	376.6	4,985.1	804.9	196.4	798.4	1,763.6	567.5	1,719.8	1,997.8	745.4	13,955.4	940.8	526.7	-69.8	15,353.1
2006 Q4	247.4	4,870.7	837.1	203.6	682.1	1,824.5	588.9	1,626.1	2,006.4	724.9	13,611.8	842.5	598.9	-77.1	14,976.1
2007 Q1	332.6	4,517.8	931.8	193.1	791.7	1,957.8	602.0	1,923.3	1,966.2	769.2	13,985.4	810.4	614.2	-74.9	15,335.1
2007 Q2	411.0	4,441.3	1,032.6	192.2	851.5	2,026.7	650.5	1,843.8	2,132.9	780.1	14,362.6	1,139.6	669.5	-83.7	16,088.0
2007 Q3	409.1	4,523.4	999.9	183.0	879.4	1,981.0	667.9	1,922.4	2,094.2	823.4	14,483.8	1,151.5	761.8	-79.6	16,317.6
2007 Q4	206.2	4,631.2	961.3	178.0	974.4	2,138.9	677.1	1,736.1	2,062.9	807.0	14,373.1	1,159.7	814.4	-88.8	16,258.4
2008 Q1	302.4	4,700.9	893.7	188.2	907.0	2,303.4	697.1	1,848.4	1,840.6	917.7	14,599.5	1,098.3	783.1	-83.1	16,397.8
2008 Q2	404.1	4,570.7	1,020.1	194.2	874.9	2,375.3	705.7	2,075.4	2,141.6	877.4	15,239.5	1,108.0	808.2	-90.4	17,065.3
2008 Q3	393.3	4,892.7	985.3	199.6	864.7	2,396.9	723.5	2,091.1	2,142.1	922.9	15,612.1	1,112.6	967.8	-84.9	17,607.6
2008 Q4	285.9	3,996.5	925.8	213.5	877.7	2,485.2	735.6	2,278.6	2,152.3	945.8	14,896.9	1,115.3	1,007.4	-94.2	16,925.3
2009 Q1	373.1	2,011.2	1,036.1	171.4	977.2	2,466.2	774.8	2,135.5	2,061.2	1,023.9	13,030.5	931.5	971.4	-89.8	14,843.7
2009 Q2	360.6	2,721.6	1,040.6	185.4	999.8	2,584.3	787.6	2,093.6	2,158.3	1,006.1	13,938.0	975.3	995.4	-97.2	15,811.5
2009 Q3	404.8	2,616.2	943.4	184.9	1,035.2	2,504.3	846.0	2,016.1	2,149.1	1,040.0	13,740.1	1,008.1	1,124.9	-90.3	15,782.8
2009 Q4	335.5	3,117.0	996.4	212.2	946.5	2,375.0	876.9	2,169.7	2,142.0	1,006.2	14,177.3	1,089.5	1,186.2	-98.2	16,354.8
2010 Q1	355.1	3,148.6	995.2	234.5	963.4	2,536.8	831.0	2,252.4	2,218.9	1,083.9	14,619.9	910.0	1,057.4	-83.2	16,504.1
2010 Q2	432.8	2,905.5	1,024.9	202.3	940.2	2,719.6	848.2	2,368.4	2,253.0	1,081.3	14,776.1	874.4	1,084.1	-92.1	16,642.5
2010 Q3	413.8	3,474.0	1,049.3	208.3	1,078.3	2,808.9	906.9	2,303.4	2,327.5	1,099.7	15,670.2	914.2	1,101.1	-87.5	17,598.1
2010 Q4	358.0	3,068.1	1,104.1	199.1	1,119.5	2,786.7	910.7	2,455.0	2,351.2	1,064.8	15,417.2	980.8	1,124.5	-97.1	17,425.4
2011 Q1	350.7	3,021.8	1,123.2	148.6	1,183.9	3,144.7	912.6	2,478.9	2,211.0	1,130.8	15,706.2	713.0	1,163.4	-92.9	17,489.7
2011 Q2	388.1	3,096.8	1,098.5	141.5	1,183.9	2,949.1	904.9	2,465.1	2,400.2	1,120.3	15,748.4	1,141.5	1,178.6	-81.8	17,986.8
2011 Q3	397.2	2,914.4	1,166.5	120.0	1,320.4	3,011.0	944.5	2,479.2	2,377.7	1,198.3	15,929.2	1,127.2	951.7	-90.2	17,917.8
2011 Q4	426.5	2,749.3	1,259.1	145.2	1,359.0	3,243.3	946.6	2,674.8	2,734.1	1,240.4	16,778.2	1,046.3	1,166.8	-92.3	18,899.0

Table 3 Continued: Value Added by Kind of Economic Activity at Constant 2006 Prices (P million)

Calendar year	Agriculture	Mining	Manufacturing	Water & Electricity	Construction	Trade, Hotels & Restaurants	Transport & Communications	Finance & Business Services	General Government	Social & Personal Services	Value Added	Taxes on Import	Other Taxes on products	Subsidies	Total GDP
2012 Q1	366.1	2,934.8	1,234.5	167.9	1,422.2	3,196.4	1,014.0	2,647.2	2,514.7	1,243.2	16,741.0	965.2	1,069.7	-90.5	18,685.5
2012 Q2	358.3	2,917.5	1,174.0	83.2	1,438.6	3,241.8	1,025.4	2,688.9	2,391.9	1,281.7	16,601.3	988.0	1,084.0	-90.9	18,582.4
2012 Q3	359.4	2,224.0	1,208.4	92.8	1,452.2	3,370.3	1,038.9	2,811.3	2,363.8	1,323.4	16,244.5	1,114.0	1,174.5	-92.8	18,440.3
2012 Q4	345.3	3,025.0	1,202.5	59.0	1,461.8	3,379.6	1,033.6	2,870.8	2,722.9	1,343.6	17,444.0	1,263.7	1,193.1	-94.2	19,806.6
2013 Q1	347.7	3,081.0	1,226.1	205.7	1,484.7	3,612.4	1,067.5	3,041.1	2,743.3	1,379.3	18,188.9	1,253.0	1,164.8	-98.7	20,508.0
2013 Q2	370.5	3,816.9	1,293.3	189.6	1,503.8	3,632.4	1,083.6	2,946.9	2,557.5	1,385.7	18,780.1	1,137.4	1,108.9	-94.6	20,931.9
2013 Q3	371.9	3,258.7	1,319.6	231.6	1,506.0	3,973.0	1,131.5	2,952.6	2,517.5	1,404.0	18,666.5	1,180.2	1,169.9	-99.4	20,917.2
2013 Q4	358.0	3,627.7	1,295.4	47.9	1,516.5	4,080.4	1,140.0	3,032.9	2,773.7	1,438.6	19,311.1	1,316.1	1,199.0	-102.4	21,723.7
2014 Q1	348.9	3,226.5	1,205.8	79.4	1,521.8	4,140.0	1,167.2	3,011.3	2,668.7	1,434.7	18,804.2	1,286.6	1,203.0	-104.0	21,189.8
2014 Q2	370.6	3,561.6	1,271.5	106.8	1,558.3	4,153.6	1,206.6	3,021.1	2,853.0	1,446.8	19,549.8	1,238.1	1,201.1	-101.6	21,887.3
2014 Q3	360.1	3,442.9	1,322.4	60.4	1,573.7	4,328.9	1,246.2	3,119.2	2,842.9	1,473.2	19,770.0	1,286.9	1,225.4	-103.7	22,178.6
2014 Q4	363.4	3,620.1	1,360.7	52.0	1,580.9	4,310.6	1,234.6	3,139.5	2,714.9	1,488.6	19,865.3	1,334.2	1,215.2	-101.0	22,313.7
2015 Q1	353.6	3,290.3	1,285.8	90.3	1,596.4	4,077.1	1,215.4	3,111.4	2,864.0	1,499.7	19,384.0	1,299.4	1,196.4	-105.4	21,774.4
2015 Q2	374.8	3,273.0	1,346.1	45.4	1,619.8	3,966.2	1,250.2	3,152.4	2,867.9	1,506.7	19,402.5	1,303.2	1,221.0	-105.9	21,820.8
2015 Q3	358.4	2,048.1	1,350.0	74.3	1,627.5	4,065.8	1,308.1	3,252.7	2,901.4	1,515.8	18,502.1	1,313.9	1,262.5	-107.4	20,971.1
2015 Q4	360.9	2,520.9	1,345.5	109.4	1,637.9	4,158.4	1,301.8	3,327.1	2,809.2	1,533.0	19,104.1	1,257.8	1,260.4	-105.9	21,516.4

Table 4: Percentage Change in Gross Value Added by Kind of Economic Activity at constant 2006 Prices

Calendar year	Agriculture	Mining	Manufacturing	Water & Electricity	Construction	Trade, Hotels & Restaurants	Transport & Communications	Finance & Business Services	General Government	Social & Personal Services	Value Added	Taxes on Import	Other Taxes on products	Subsidies	Total GDP
2005	-2.5	8.3	1.8	-14.1	-1.2	3.8	14.0	1.4	-1.1	18.6	4.4	11.1	-0.9	9.0	4.6
2006	13.3	5.1	20.0	3.0	15.9	27.4	13.8	4.9	-2.2	13.8	8.7	7.1	3.8	12.6	8.4
2007	12.2	-4.8	25.7	-4.9	23.2	15.2	15.4	11.2	5.6	8.2	6.5	24.3	25.6	12.8	8.3
2008	2.0	0.3	-2.6	6.6	0.8	18.0	10.2	11.7	0.2	15.2	5.5	4.1	24.7	7.8	6.2
2009	6.4	-42.4	5.0	-5.2	12.3	3.9	14.8	1.5	2.8	11.3	-9.1	-9.7	20.0	6.5	-7.7
2010	5.8	20.4	3.9	12.0	3.6	9.3	6.4	11.5	7.5	6.2	10.2	-8.1	2.1	-4.2	8.6
2011	0.2	-6.5	11.4	-34.2	23.1	13.8	6.1	7.7	6.3	8.3	6.1	9.5	2.1	-0.7	6.0
2012	-8.5	-5.8	3.7	-27.5	14.4	6.8	10.9	9.1	2.8	10.7	4.5	7.5	1.4	3.1	4.5
2013	1.3	24.2	6.5	67.5	4.1	16.0	7.6	8.7	6.0	8.0	11.8	12.8	2.7	7.3	11.3
2014	-0.4	0.5	0.5	-55.8	3.7	10.7	9.8	2.7	4.6	4.2	4.1	5.3	4.4	3.8	4.1
2015	0.3	-19.6	3.2	7.0	4.0	-3.9	4.5	4.5	3.3	3.6	-2.0	0.6	2.0	3.5	-1.7
2016	0.5	-3.5	1.6	95.2	4.2	13.5	6.6	3.3	2.4	3.5	4.9	-0.4	0.8	3.2	4.3
2017	2.1	-11.2	1.9	-19.5	3.5	7.3	4.7	5.0	2.2	2.8	2.2	3.6	3.8	1.4	2.4
2005 Q1	20.9	14.2	-0.8	-14.0	-7.3	-2.9	6.6	0.4	-0.9	14.9	4.6	30.0	-2.2	1.7	5.5
Q2	-21.3	22.0	1.2	-10.7	0.5	-0.3	16.2	2.1	-5.7	19.8	6.9	-10.3	-2.6	8.9	5.4
Q3	7.1	0.1	6.4	-13.9	-2.8	5.2	18.5	2.5	-2.7	20.3	2.1	-10.9	85.1	12.6	3.3
Q4	-8.5	2.5	0.6	-17.2	5.8	13.4	14.8	0.7	5.0	19.6	4.5	41.3	-40.5	12.7	4.2
2006 Q1	26.5	20.4	20.6	1.7	10.3	32.0	16.1	8.7	-4.7	18.0	15.0	-2.0	-14.2	16.0	12.2
Q2	-15.9	5.6	17.0	2.5	11.1	26.7	20.2	9.0	4.5	15.5	9.7	17.6	19.0	13.1	10.4
Q3	16.1	1.2	18.4	4.0	30.5	27.2	7.7	3.7	-1.1	12.8	7.5	44.2	-14.2	11.4	8.2
Q4	35.3	-3.0	23.8	3.9	11.7	24.0	12.1	-1.2	-7.0	9.2	3.5	-17.1	49.1	10.3	3.3
2007 Q1	-2.9	-1.5	24.8	-0.2	16.9	12.9	11.4	14.1	9.8	3.9	7.3	2.3	-5.0	9.4	6.5
Q2	68.3	-3.0	40.6	0.4	25.2	18.5	17.4	12.2	5.4	7.1	9.7	33.5	32.9	12.4	11.9
Q3	8.6	-9.3	24.2	-6.8	10.1	12.3	17.7	11.8	4.8	10.5	3.8	22.4	44.6	14.1	6.3
Q4	-16.7	-4.9	14.8	-12.6	42.9	17.2	15.0	6.8	2.8	11.3	5.6	37.6	36.0	15.2	8.6
2008 Q1	-9.1	4.1	-4.1	-2.5	14.6	17.7	15.8	-3.9	-6.4	19.3	4.4	35.5	27.5	10.9	6.9
Q2	-1.7	2.9	-1.2	1.1	2.7	17.2	8.5	12.6	0.4	12.5	6.1	-2.8	20.7	8.0	6.1
Q3	-3.9	8.2	-1.5	9.1	-1.7	21.0	8.3	8.8	2.3	12.1	7.8	-3.4	27.0	6.6	7.9
Q4	38.7	-13.7	-3.7	19.9	-9.9	16.2	8.6	31.2	4.3	17.2	3.6	-3.8	23.7	6.2	4.1
2009 Q1	23.4	-57.2	15.9	-9.0	7.7	7.1	11.1	15.5	12.0	11.6	-10.7	-15.2	24.1	8.1	-9.5
Q2	-10.8	-40.5	2.0	-4.5	14.3	8.8	11.6	0.9	0.8	14.7	-8.5	-12.0	23.2	7.6	-7.3
Q3	2.9	-46.5	-4.3	-7.4	19.7	4.5	16.9	-3.6	0.3	12.7	-12.0	-9.4	16.2	6.4	-10.4
Q4	17.4	-22.0	7.6	-0.6	7.8	-4.4	19.2	-4.8	-0.5	6.4	-4.8	-2.3	17.8	4.2	-3.4
2010 Q1	-4.8	56.6	-3.9	36.9	-1.4	2.9	7.3	5.5	7.7	5.9	12.2	-2.3	8.9	-7.4	11.2
Q2	20.0	6.8	-1.5	9.1	-6.0	5.2	7.7	13.1	4.4	7.5	6.0	-10.3	8.9	-5.3	5.3
Q3	2.2	32.8	11.2	12.7	4.2	12.2	7.2	14.3	8.3	5.7	14.0	-9.3	-2.1	-3.2	11.5
Q4	6.7	-1.6	10.8	-6.2	18.3	17.3	3.9	13.2	9.8	5.8	8.7	-10.0	-5.2	-1.1	6.5
2011 Q1	-1.2	-4.0	12.9	-36.6	22.9	24.0	9.8	10.1	-0.4	4.3	7.4	-21.7	10.0	11.6	6.0
Q2	-10.3	6.6	7.2	-30.0	25.9	8.4	6.7	4.1	6.5	3.6	6.6	30.6	8.7	-11.2	8.1
Q3	-4.0	-16.1	11.2	-42.4	22.5	7.2	4.1	7.6	2.2	9.0	1.7	23.3	-13.6	3.2	1.8
Q4	19.1	-10.4	14.0	-27.1	21.4	16.4	3.9	9.0	16.3	16.5	8.8	6.7	3.8	-4.9	8.5
2012 Q1	4.4	-2.9	9.9	12.9	20.1	1.6	11.1	6.8	13.7	9.9	6.6	35.4	-8.1	-2.6	6.8
Q2	-7.7	-5.8	6.9	-41.2	21.5	9.9	13.3	9.1	-0.3	14.4	5.4	-13.4	-8.0	11.1	3.3
Q3	-9.5	-23.7	3.6	-22.7	10.0	11.9	10.0	13.4	-0.6	10.4	2.0	-1.2	23.4	2.8	2.9
Q4	-19.0	10.0	-4.5	-59.3	7.6	4.2	9.2	7.3	-0.4	8.3	4.0	20.8	2.2	2.1	4.8
2013 Q1	-5.0	5.0	-0.7	22.5	4.4	13.0	5.3	14.9	9.1	10.9	8.6	29.8	8.9	9.0	9.8
Q2	3.4	30.8	10.2	127.8	4.5	12.1	5.7	9.6	6.9	8.1	13.1	15.1	2.3	4.0	12.6
Q3	3.5	46.5	9.2	149.6	3.7	17.9	8.9	5.0	6.5	6.1	14.9	5.9	-0.4	7.2	13.4
Q4	3.7	19.9	7.7	-18.8	3.7	20.7	10.3	5.6	1.9	7.1	10.7	4.1	0.5	8.7	9.7

Table 4 Continued: Percentage Change in Gross Value Added by Kind of Economic Activity at constant 2006 Prices

Calendar year	Agriculture	Mining	Manufacturing	Water & Electricity	Construction	Trade, Hotels & Restaurants	Transport & Communication	Finance & Business Service	General Government	Social & Personal Services	Value Added	Taxes on Import	Other Taxes on products	Subsidies	Total GDP
2014 Q1	0.3	4.7	-1.7	-61.4	2.5	14.6	9.3	-1.0	-2.7	4.0	3.4	2.7	3.3	5.4	3.3
Q2	0.0	-6.7	-1.7	-43.7	3.6	14.3	11.3	2.5	11.6	4.4	4.1	8.8	8.3	7.4	4.6
Q3	-3.2	5.7	0.2	-73.9	4.5	9.0	10.1	5.6	12.9	4.9	5.9	9.0	4.7	4.3	6.0
Q4	1.5	-0.2	5.0	8.4	4.2	5.6	8.3	3.5	-2.1	3.5	2.9	1.4	1.3	-1.4	2.7
2015 Q1	1.3	2.0	6.6	13.7	4.9	-1.5	4.1	3.3	7.3	4.5	3.1	1.0	-0.6	1.3	2.8
Q2	1.1	-8.1	5.9	-57.5	3.9	-4.5	3.6	4.3	0.5	4.1	-0.8	5.3	1.7	4.3	-0.3
Q3	-0.5	-40.5	2.1	23.1	3.4	-6.1	5.0	4.3	2.1	2.9	-6.4	2.1	3.0	3.6	-5.4
Q4	-0.7	-30.4	-1.1	110.5	3.6	-3.5	5.4	6.0	3.5	3.0	-3.8	-5.7	3.7	4.9	-3.6
2016 Q1	-1.8	-5.5	-0.3	58.2	3.4	5.3	7.1	4.9	1.4	3.5	2.4	1.1	1.5	1.8	2.3
Q2	-1.5	-13.6	1.1	277.3	4.6	20.0	5.5	3.0	2.3	3.5	4.3	-1.9	2.8	2.8	3.9
Q3	3.9	18.6	2.6	14.3	4.2	16.3	6.2	2.6	2.3	4.1	7.9	-2.6	1.2	3.6	6.9
Q4	1.6	-6.0	2.7	105.1	4.7	12.6	7.4	2.9	3.5	2.9	4.9	1.9	-2.3	4.8	4.3
2017 Q1	2.9	-28.9	0.2	-47.9	4.0	19.0	4.4	5.2	1.5	2.1	1.2	-0.6	-1.5	3.3	0.9
Q2	1.1	-13.5	0.0	7.2	3.3	2.5	6.0	5.5	1.8	2.8	0.8	4.5	0.1	1.9	1.0
Q3	2.0	3.2	3.3	15.7	3.5	-9.3	4.5	4.8	1.9	2.7	0.4	5.5	7.2	-0.1	1.1
Q4	2.6	0.2	4.1	-35.1	3.3	18.1	3.8	4.6	3.8	3.5	6.3	5.2	9.1	0.5	6.5
2018 Q1	3.1	12.1	4.4	120.9	3.5	-0.7	6.5	5.4	2.8	3.6	4.3	7.2	10.4	2.8	4.8
Q2	3.0	7.4	3.6	-7.4	4.1	8.8	5.9	6.1	2.9	3.3	5.7	2.3	1.6	5.3	5.3

Table 5: Gross Domestic Product by Type of Expenditure at Current Prices (P million)

Calendar year	Government Final Consumption			Household Final Consumption			Gross Fixed Capital Formation					Change in Inventories				Gross Domestic Expenditure	Exports			Imports			Errors & Omissions	Total GDP	
	Central Govt	Local Govt	Total	Non-Profit Institutions	Household Consumption (Mkt)	Household Consumption (Non-Mkt)	Total	Construction	Machinery & Equipment	Transport Equipment	Mineral Prospecting	Total	Livestock	Minerals	Others		Total	Goods	Services	Total	Goods	Services			Total
2004	7,311.3	1,319.8	8,631.1	796.4	13,795.9	2,132.5	16,724.8	6,937.7	3,531.7	1,019.8	214.4	11,703.7	87.8	511.2	930.2	1,529.3	38,588.8	17,344.6	3,511.3	20,855.9	13,475.6	3,920.8	17,396.4	-11.7	42,036.6
2005	8,361.6	1,484.7	9,846.3	1,013.0	16,096.4	2,230.5	19,340.0	8,035.7	3,624.8	950.4	249.7	12,860.5	74.1	15.5	829.2	918.9	42,965.6	22,708.3	4,151.5	26,859.8	13,729.2	4,329.3	18,058.5	-1,014.7	50,752.2
2006	8,502.4	1,568.1	10,070.5	1,217.0	19,222.9	2,452.8	22,892.7	9,930.8	4,095.6	1,159.8	300.5	15,486.6	160.7	-1,164.1	828.2	-175.2	48,274.7	26,386.1	4,499.9	30,886.0	15,283.9	4,859.8	20,143.7	89.9	59,106.9
2007	9,989.2	1,826.2	11,815.4	1,335.0	22,220.5	3,066.7	26,622.2	11,421.2	5,515.0	1,768.0	357.2	19,061.5	217.9	41.6	1,357.0	1,616.4	59,115.5	31,692.0	4,917.0	36,609.0	21,228.0	6,028.3	27,256.3	-1,315.5	67,152.7
2008	12,936.1	2,270.6	15,206.6	1,147.1	27,967.0	3,815.0	32,929.1	12,052.9	8,122.2	2,430.4	246.1	22,851.6	184.0	2,081.1	1,922.6	4,187.7	75,175.1	32,757.0	1,371.0	34,128.0	35,330.0	2,809.0	38,139.0	3,556.8	74,720.9
2009	12,971.2	2,521.7	15,492.9	1,217.0	32,077.5	3,929.1	37,223.5	14,587.8	8,077.9	2,665.8	313.9	25,645.5	191.8	547.0	2,214.8	2,953.6	81,315.5	23,866.0	1,699.6	25,565.6	33,346.0	4,770.0	38,116.0	4,697.3	73,462.4
2010	14,363.6	2,798.3	17,162.0	1,335.0	37,195.1	4,161.9	42,692.1	16,852.9	9,484.8	2,510.7	353.2	29,201.5	253.8	4,409.0	2,109.3	6,772.1	95,827.6	31,237.0	6,668.0	37,905.0	38,035.0	6,497.0	44,532.0	-2,333.2	86,867.4
2011	16,592.9	2,814.4	19,407.3	1,464.6	42,755.9	4,408.6	48,629.1	19,364.4	10,907.5	2,962.6	406.1	33,640.6	1.3	4,853.5	2,001.1	6,855.8	108,532.9	44,043.0	8,395.0	52,438.0	48,821.0	7,443.0	56,264.0	273.0	104,979.9
2012	18,342.9	2,852.7	21,195.6	1,995.2	50,789.5	4,315.5	57,100.3	23,308.9	12,601.9	3,437.1	455.5	39,803.5	187.6	221.6	2,460.8	2,869.9	120,969.3	45,886.0	8,226.0	54,112.0	61,074.0	6,391.0	67,465.0	2,254.1	109,870.4
2013	20,005.4	3,209.3	23,214.8	2,154.9	57,512.1	5,442.5	65,109.5	26,629.9	12,316.1	2,408.1	571.0	41,925.1	-261.6	-4,752.3	-103.3	-5117.2	125,132.2	66,563.7	10,437.0	77,000.7	68,902.2	7,483.1	76,385.3	-589.2	125,158.3
2014	25,343.8	3,733.9	29,077.7	2,308.3	60,279.5	5,887.0	68,474.7	28,775.8	12,346.4	2,697.1	613.3	44,432.7	165.0	-417.1	-3,047.0	-3299.1	138,686.0	76,419.9	12,137.0	88,556.9	71,745.4	6,953.2	78,698.7	-2,675.6	145,868.6
2015	26,034.1	4,022.6	30,056.7	2,460.1	67,271.0	6,278.1	76,009.2	31,329.6	15,132.9	2,532.9	648.0	49,643.4	1485.7	2,825.6	-6,332.5	-2021.2	153,688.1	63,673.5	13,790.2	77,463.6	72,787.7	6,805.6	79,593.3	-5,492.7	146,065.7
2016	27,313.3	3,719.5	31,032.9	2,662.5	71,124.1	6,936.8	80,723.4	34,784.0	15,116.2	2,397.1	688.5	52,985.8	69.4	-2,037.2	-2,287.4	-4255.2	160,486.9	69,497.6	15,369.3	84,867.0	66,125.9	7,502.9	73,628.8	-1,136.2	170,588.9
2017	29,283.9	3,874.5	33,158.3	2,864.8	77,478.6	7,077.9	87,421.3	37,777.4	11,753.4	1,929.7	722.4	52,183.0	1312.5	-117.3	-2,762.0	-1566.7	171,195.8	61,112.5	10,622.3	71,734.8	51,784.0	9,324.0	61,108.0	-1,709.9	180,112.7
2004 Q1	1,845.5	354.9	2,200.4	181.5	3,317.9	466.8	3,966.2	1,640.7	785.6	286.9	51.0	2,764.2	21.3	104.6	359.0	484.8	9,415.6	4,182.0	1,046.3	5,228.3	2,846.0	1,095.1	3,941.1	-449.5	10,253.3
Q2	1,753.4	316.7	2,070.1	192.8	3,394.3	433.5	4,020.6	1,686.8	957.3	243.1	52.4	2,939.6	39.0	-298.7	349.9	90.2	9,120.5	3,625.7	595.8	4,221.5	3,411.2	886.8	4,298.0	29.2	9,073.2
Q3	1,883.2	314.1	2,197.3	204.7	3,369.4	647.1	4,221.2	1,780.3	866.1	259.1	55.0	2,960.5	16.9	406.6	116.8	540.3	9,919.4	4,946.5	677.0	5,623.5	3,481.0	1,051.5	4,532.5	466.4	11,476.8
Q4	1,829.1	334.2	2,163.3	217.4	3,714.3	585.0	4,516.7	1,829.9	922.6	230.8	56.0	3,039.3	10.7	298.7	104.6	414.0	10,133.3	4,590.4	1,192.2	5,782.6	3,737.4	887.3	4,624.7	-57.8	11,233.4
2005 Q1	2,298.6	406.0	2,704.6	230.9	3,992.9	458.6	4,682.4	1,879.0	899.1	357.2	53.4	3,188.8	12.2	-620.1	218.5	-389.3	10,186.5	5,538.7	1,168.1	6,706.8	3,363.9	1,239.0	4,602.9	52.7	12,343.1
Q2	1,802.4	318.2	2,120.6	245.2	3,694.1	571.8	4,511.1	1,931.6	830.2	185.4	50.9	2,998.2	15.7	-129.7	184.2	70.3	9,700.1	4,871.5	536.7	5,408.2	3,251.0	994.0	4,245.0	263.4	11,126.7
Q3	1,973.4	353.2	2,326.6	260.4	4,085.9	603.9	4,950.1	2,083.3	935.0	207.4	68.0	3,293.7	30.7	597.7	189.2	817.6	11,388.0	7,020.6	961.4	7,982.0	3,289.8	1,034.3	4,324.2	-858.2	14,187.7
Q4	2,287.2	407.3	2,694.5	276.5	4,323.5	596.3	5,196.4	2,141.7	960.5	200.3	77.3	3,379.8	15.5	167.6	237.2	420.3	11,691.0	5,277.5	1,485.3	6,762.8	3,824.5	1,062.0	4,886.4	-472.7	13,094.7
2006 Q1	1,970.0	374.1	2,344.2	293.7	4,531.2	412.8	5,237.6	2,394.5	828.8	270.9	66.6	3,560.8	31.6	-1,284.0	199.0	-1,053.4	10,089.2	6,028.7	1,269.1	7,297.8	3,158.9	1,298.3	4,457.2	1,072.2	14,002.0
Q2	1,963.6	375.1	2,338.8	299.0	4,323.7	703.5	5,326.1	2,461.6	964.0	262.0	65.6	3,753.2	25.8	7,957.6	185.3	8,168.8	19,586.9	6,090.1	649.3	6,739.4	3,925.3	1,080.4	5,005.8	-8,110.6	13,209.9
Q3	2,202.5	402.2	2,604.8	316.9	5,246.7	630.4	6,194.0	2,569.3	1,106.0	293.0	84.6	4,052.9	59.3	-11,495.1	248.6	-11,187.2	1,664.5	6,214.5	924.3	7,138.8	4,023.7	1,345.3	5,369.0	12,781.5	16,215.7
Q4	2,366.2	416.6	2,782.9	307.4	5,121.3	706.2	6,134.9	2,505.4	1,196.8	333.9	83.7	4,119.7	44.0	3,657.4	195.3	3,896.7	16,934.1	8,052.8	1,657.2	9,710.0	4,175.9	1,135.8	5,311.7	-5,653.2	15,679.3
2007 Q1	2,494.9	435.4	2,930.4	304.3	4,680.0	733.3	5,717.7	2,661.9	1,074.2	380.3	82.5	4,198.8	49.9	-262.6	185.3	-27.4	12,819.5	8,956.0	1,397.0	10,353.0	4,192.0	1,697.0	5,889.0	-1,549.6	15,733.9
Q2	2,367.2	437.2	2,804.4	312.7	5,186.7	728.0	6,227.4	2,769.6	1,285.8	488.6	84.9	4,628.8	69.9	-147.2	189.6	112.3	13,773.0	7,693.0	649.0	8,342.0	5,160.0	1,197.0	6,357.0	16.4	15,774.4
Q3	2,549.9	475.9	3,025.9	359.6	5,997.3	731.7	7,088.6	2,939.9	1,644.1	492.0	95.6	5,171.7	62.1	1,650.7	478.3	2,191.0	17,477.2	8,923.0	1,369.0	10,292.0	5,395.0	1,549.3	6,944.3	-2,310.6	18,514.2
Q4	2,577.2	477.6	3,054.7	358.5	6,356.5	873.5	7,588.6	3,049.8	1,510.9	407.1	94.3	5,062.1	36.0	-1,199.3	503.8	-659.5	15,045.9	6,120.0	1,502.0	7,622.0	6,481.0	1,585.0	8,066.0	2,528.3	17,130.1
2008 Q1	3,253.2	546.6	3,799.7	334.9	5,704.2	803.7	6,842.8	2,831.3	1,990.9	526.2	68.1	5,416.4	36.0	125.4	559.5	720.9	16,779.8	9,018.0	367.0	9,385.0	7,505.0	650.0	8,155.0	-525.2	17,484.6
Q2	3,087.6	558.5	3,646.0	379.8	6,463.1	966.4	7,809.3	2,913.9	1,956.4	621.5	56.1	5,547.9	43.0	-130.2	521.0	433.9	17,437.1	8,259.0	357.0	8,616.0	8,835.0	676.0	9,511.0	744.8	17,286.9
Q3	3,088.1	559.3	3,647.4	209.7	8,073.8	975.2	9,258.7	3,174.0	1,884.8	590.7	64.4	5,713.9	49.3	-427.0	402.7	25.0	18,645.0	10,776.0	265.0	11,041.0	9,677.0	651.0	10,328.0	790.9	20,148.9
Q4	3,507.2	606.2	4,113.5	222.7	7,725.8	1,069.8	9,018.3	3,133.7	2,290.0	692.0	57.6	6,173.4	55.7	2,513.0	439.3	3,008.0	22,313.1	4,704.0	382.0	5,086.0	9,313.0	832.0	10,145.0	2,546.3	19,800.4
2009 Q1	3,235.4	620.2	3,855.6	307.8	7,103.8	904.6	8,316.1	3,311.1	1,865.6	802.8	62.4	6,041.9	51.4	885.3	679.4	1,616.1	19,829.7	3,886.0	317.6	4,203.6	7,736.0	1,096.0	8,832.0	1,394.7	16,596.0
Q2	3,443.0	653.7	4,096.7	296.0	6,924.3	1,162.2	8,382.4	3,723.9	2,106.8	568.1	79.2	6,478.1	46.4	-350.2	444.6	140.8	19,098.1	6,590.0	633.0	7,223.0	8,001.0	1			

Table 5: Continued Gross Domestic Product by Type of Expenditure at Current Prices (P million)

Calendar year	Government Final Consumption			Non-Profit Institutions	Household Final Consumption			Gross Fixed Capital Formation					Change in Inventories				Gross Domestic Expenditure	Exports			Imports			Errors & Omissions	Total GDP
	Central Govt	Local Govt	Total		Household Consumption (Mkt)	Household Consumption (Non-Mkt)	Total	Construction	Machinery & Equipment	Transport Equipment	Mineral Prospecting	Total	Livestock	Minerals	Others	Total		Goods	Services	Total	Goods	Services	Total		
2012 Q1	4,371.3	707.4	5,078.8	479.9	9,325.5	1,116.2	10,921.7	5,712.3	3,053.4	836.4	118.8	9,720.9	45.4	712.8	637.8	1,396.0	27,117.4	9,783.0	1,975.0	11,758.0	12,823.0	1,521.0	14,344.0	1,512.7	26,044.1
Q2	4,931.2	711.3	5,642.5	489.3	13,148.6	1,048.1	14,686.0	5,372.4	3,251.4	961.2	93.9	9,678.8	50.2	-122.6	578.1	505.7	30,513.1	10,414.0	2,014.0	12,428.0	12,903.0	1,648.0	14,551.0	-664.0	27,726.0
Q3	4,470.0	710.5	5,180.5	519.9	13,589.5	1,002.9	15,112.3	5,906.6	3,146.8	832.8	119.7	10,005.9	60.9	-1,110.1	641.4	-407.8	29,890.9	13,556.0	1,961.0	15,517.0	19,499.0	1,925.0	21,424.0	3,557.9	27,541.9
Q4	4,570.3	723.5	5,293.8	506.1	14,725.9	1,148.3	16,380.3	6,317.7	3,150.3	806.8	123.1	10,397.8	31.1	741.5	603.4	1,376.0	33,447.9	12,133.0	2,276.0	14,409.0	15,849.0	1,297.0	17,146.0	-2,152.5	28,558.5
2013 Q1	4,838.4	750.8	5,589.2	518.3	13,874.6	1,218.7	15,611.6	6,497.2	2,509.3	586.0	140.5	9,733.1	-139.6	-4,500.8	718.1	-3,922.4	27,011.5	16,867.8	2,151.0	19,018.8	15,728.2	1,834.2	17,562.4	-43.0	28,424.9
Q2	4,954.5	775.4	5,729.9	535.7	13,617.1	1,541.2	15,693.9	6,637.0	3,293.9	716.9	142.1	10,789.9	-69.4	-304.8	1,374.8	1,000.6	33,214.3	14,739.4	2,675.0	17,414.4	17,067.0	2,010.0	19,077.0	909.7	32,461.3
Q3	5,071.0	807.3	5,878.3	545.5	14,503.8	1,330.7	16,379.9	6,650.2	3,176.6	480.2	143.5	10,450.4	-30.3	-197.2	-2,420.8	-2,648.3	30,060.3	19,550.4	2,792.0	22,342.4	17,130.8	1,996.3	19,127.2	-1,610.1	31,665.5
Q4	5,141.6	875.8	6,017.3	555.5	15,516.7	1,351.9	17,424.1	6,845.6	3,336.2	625.0	144.9	10,951.8	-22.3	250.5	224.6	452.8	34,846.0	15,406.1	2,819.0	18,225.1	18,976.1	1,642.6	20,618.8	154.2	32,606.6
2014 Q1	6,001.5	891.2	6,892.8	565.3	14,172.6	1,363.5	16,101.4	6,994.6	3,189.6	626.6	149.2	10,960.1	-45.4	-120.9	70.0	-96.2	33,858.0	17,273.4	2,946.8	20,220.2	17,896.3	1,741.0	19,637.3	72.7	34,513.7
Q2	6,406.5	929.8	7,336.3	573.2	14,365.4	1,488.1	16,426.7	7,220.8	2,977.9	720.1	151.8	11,070.7	-20.0	-295.5	-498.4	-813.9	34,019.8	21,037.3	2,910.9	23,948.2	18,401.7	1,628.3	20,030.0	-213.4	37,724.6
Q3	6,495.8	956.7	7,452.5	580.8	15,515.3	1,524.7	17,620.7	7,250.6	2,392.8	686.7	153.6	10,483.7	54.0	189.0	-1,609.3	-1,366.3	34,190.6	19,790.8	3,098.8	22,889.7	17,775.5	1,631.6	19,407.0	-1,517.4	36,155.9
Q4	6,439.9	956.3	7,396.2	589.0	16,226.2	1,510.6	18,325.8	7,309.8	3,786.1	663.7	158.6	11,918.2	176.4	-189.8	-1,009.3	-1,022.7	36,617.6	18,318.3	3,180.5	21,498.7	17,672.0	1,952.3	19,624.3	-1,017.5	37,474.4
2015 Q1	6,334.1	981.9	7,316.0	596.6	15,744.1	1,528.5	17,869.2	7,547.4	3,267.7	578.3	163.6	11,557.0	347.4	89.3	-1,392.8	-956.1	35,786.1	19,524.0	3,014.1	22,538.1	18,169.3	1,748.2	19,917.5	-1,842.0	36,564.8
Q2	6,526.5	1,022.9	7,549.4	606.9	16,672.2	1,564.1	18,843.2	7,847.5	3,884.8	638.1	154.9	12,525.2	425.4	207.8	-2,400.0	-1,766.8	37,151.0	19,828.3	3,564.6	23,393.0	19,702.0	1,635.5	21,337.5	-1,862.4	37,344.0
Q3	6,498.8	1,021.2	7,520.0	620.8	16,933.6	1,569.6	19,123.9	7,889.4	4,155.2	637.6	161.3	12,843.5	410.4	782.1	460.3	1,652.8	41,140.3	11,850.5	3,660.1	15,510.7	17,930.4	1,487.1	19,417.6	59.5	37,292.9
Q4	6,674.7	996.6	7,671.3	635.8	17,921.1	1,615.9	20,172.8	8,045.3	3,825.2	679.0	168.2	12,717.6	302.5	1,746.4	-3,000.0	-951.1	39,610.7	12,470.5	3,551.3	16,021.9	16,986.0	1,934.7	18,920.7	-1,847.8	34,864.0
2016 Q1	6,798.2	976.9	7,775.1	646.1	16,843.0	1,715.5	19,204.6	8,315.7	3,201.5	503.6	173.4	12,194.2	101.7	-715.9	-1,000.0	-1,614.2	37,559.8	15,021.4	3,840.5	18,861.9	16,277.2	1,689.4	17,966.6	1,155.3	39,610.3
Q2	7,012.4	931.6	7,944.0	657.6	17,070.9	1,758.7	19,487.2	8,598.4	3,884.7	598.5	165.7	13,247.3	-12.4	-178.2	-76.0	-266.6	40,411.9	17,407.8	3,609.2	21,017.0	16,991.4	1,908.0	18,899.5	98.4	42,627.8
Q3	6,696.3	909.4	7,605.7	671.5	18,307.9	1,784.9	20,764.3	8,899.4	3,850.1	725.8	171.2	13,646.5	-39.7	-1,189.3	-1,114.3	-2,343.3	39,673.1	20,245.9	4,016.4	24,262.3	15,778.9	1,837.4	17,616.3	-1,925.7	44,393.5
Q4	6,806.4	901.6	7,708.1	687.2	18,902.4	1,677.7	21,267.3	8,970.6	4,179.8	569.3	178.2	13,897.8	19.8	46.2	-97.0	-31.1	42,842.1	16,822.5	3,903.3	20,725.8	17,078.3	2,068.1	19,146.4	-464.2	43,957.3
2017 Q1	6,957.4	926.9	7,884.3	695.1	19,845.6	1,689.1	22,229.7	8,979.5	2,968.1	431.6	182.0	12,561.1	167.6	-158.0	-1,700.0	-1,690.3	40,984.8	17,571.5	2,630.1	20,201.6	12,149.7	2,073.1	14,222.8	-3,106.5	43,857.1
Q2	7,418.1	979.2	8,397.3	710.6	18,842.9	1,759.2	21,312.7	9,248.9	2,441.7	420.6	174.7	12,286.0	306.1	327.9	-512.0	122.0	42,118.0	15,006.8	2,607.1	17,613.8	12,013.6	2,227.3	14,240.9	-852.3	44,638.6
Q3	7,311.3	977.9	8,289.1	725.9	19,249.4	1,817.2	21,792.5	9,711.4	3,072.4	453.1	179.7	13,416.5	396.2	-363.9	-100.0	-67.7	43,430.4	13,271.1	2,539.5	15,810.6	12,962.6	2,460.5	15,423.1	1,145.3	44,963.3
Q4	7,597.0	990.5	8,587.5	733.2	19,547.7	1,812.5	22,093.4	9,837.6	3,261.2	671.0	186.0	13,955.8	442.6	76.8	-450.0	69.4	44,706.1	15,556.2	2,845.6	18,401.7	14,658.1	2,563.1	17,221.2	766.8	46,653.4
2018 Q1	7,612.4	994.7	8,607.1	740.7	19,806.1	1,813.9	22,360.7	9,877.0	2,987.3	561.2	191.1	13,616.6	446.5	28.1	550.0	1,024.6	45,609.0	13,685.0	2,674.6	16,359.7	13,084.0	2,460.0	15,544.0	-272.2	46,152.5
Q2	7,794.7	1,018.3	8,812.9	750.4	20,301.6	1,857.0	22,908.9	10,222.7	2,990.1	538.4	186.2	13,937.3	450.4	855.3	-297.0	1,008.6	46,667.8	14,170.8	2,686.6	16,857.4	13,568.2	2,494.5	16,062.7	-99.7	47,362.7

Note: 2016 -2018 estimates are provisional

Table 6: Gross Domestic Product by Type of Expenditure at Constant Prices (P million)

Calendar year	Government Final Consumption			Non-Profit Institutions	Household Final Consumption			Gross Fixed Capital Formation					Change in Inventories				Gross Domestic Expenditure	Exports			Imports			Errors & Omissions	Total GDP
	Central Govt	Local Govt	Total		Household Consumption (Mkt)	Household Consumption (Non-Mkt)	Total	Construction	Machinery & Equipment	Transport Equipment	Mineral Prospecting	Total	Livestock	Minerals	Others	Total		Goods	Services	Total	Goods	Services	Total		
2004	9,695.9	1,499.1	11,195.0	837.6	14,545.3	2,242.9	17,625.7	8,757.6	4,167.6	1,064.3	225.5	14,215.1	75.9	191.2	978.4	1,245.5	44,281.4	21,072.7	4,265.8	25,338.5	16,328.3	4,851.9	21,180.2	3,728.1	52,167.7
2005	8,918.5	1,568.8	10,487.3	1,022.1	16,252.3	2,250.6	19,525.0	9,190.2	4,062.8	974.9	251.9	14,479.8	80.7	-417.5	1,236.7	899.9	45,392.0	25,319.2	4,628.6	29,947.8	15,303.7	4,831.1	20,134.8	-660.2	54,544.8
2006	8,502.4	1,568.1	10,070.5	1,217.0	19,222.9	2,452.8	22,892.7	9,930.8	4,095.6	1,159.7	300.5	15,486.5	160.7	-1,164.1	828.2	-175.2	48,274.6	26,386.1	4,499.9	30,886.0	15,271.4	4,872.3	20,143.7	90.0	59,106.9
2007	8,798.4	1,626.7	10,425.1	1,326.2	21,952.7	3,046.3	26,325.1	10,268.9	4,901.3	1,718.7	354.9	17,243.8	125.3	-509.8	1,347.9	963.4	54,957.5	28,663.8	4,841.7	33,505.6	19,411.8	5,758.8	25,170.6	706.7	63,999.1
2008	9,193.5	1,751.4	10,944.9	1,082.0	26,187.9	3,598.5	30,868.4	9,213.3	6,121.7	2,251.6	232.2	17,818.8	157.2	801.9	1,813.5	2,772.6	62,404.8	27,555.5	5,119.2	32,674.7	24,666.2	4,920.2	29,586.5	2,503.0	67,996.1
2009	9,520.5	1,748.7	11,269.2	1,076.4	28,024.6	3,475.3	32,576.3	10,779.1	6,103.4	2,349.7	277.7	19,509.9	209.3	-300.6	1,561.0	1,469.7	64,825.2	18,677.1	1,688.9	20,365.9	21,737.6	4,628.8	26,366.4	3,968.0	62,792.8
2010	9,945.7	1,744.3	11,690.0	1,110.1	30,813.3	3,460.7	35,384.1	11,711.9	7,089.7	2,205.0	293.7	21,300.2	163.4	3,300.2	1,753.9	5,217.6	73,591.9	22,264.8	1,364.5	23,629.3	23,305.3	4,769.8	28,075.1	-976.0	68,170.1
2011	10,442.4	1,830.7	12,273.1	1,166.9	33,491.6	3,512.7	38,171.2	13,136.3	7,931.9	2,496.9	323.6	23,888.6	236.2	794.4	1,594.4	2,625.1	76,958.1	28,696.4	1,441.9	30,138.2	27,882.9	5,589.6	33,472.5	-1,330.5	72,293.3
2012	12,229.8	1,912.5	14,142.3	1,127.5	33,673.4	2,853.2	37,654.1	14,140.5	9,782.2	2,908.3	310.1	27,141.0	217.5	154.4	1,615.9	1,987.7	80,925.2	30,069.2	5,445.9	35,515.1	40,012.4	4,197.3	44,209.7	3,284.2	75,514.8
2013	14,059.4	2,117.9	16,177.3	989.8	37,035.6	3,430.1	41,455.5	15,747.1	9,491.1	2,063.6	387.2	27,689.0	-106.5	-2,742.6	1,355.6	-1,493.5	83,828.3	42,370.8	6,569.7	48,940.6	43,735.9	4,901.0	48,636.8	-51.3	84,080.7
2014	15,751.2	2,171.0	17,922.3	1,029.1	37,260.6	3,518.0	41,807.7	16,364.1	9,145.1	2,193.5	393.7	28,096.4	-77.6	-570.2	-1,753.9	-2,401.7	85,424.7	45,474.2	7,252.2	52,726.5	43,915.6	4,796.3	48,711.8	-1,869.9	87,569.5
2015	16,095.2	2,276.7	18,371.9	1,061.8	38,840.3	3,548.5	43,450.6	16,920.6	11,178.0	2,059.7	398.1	30,556.4	519.5	2,628.9	-2,116.7	1,031.7	93,410.6	36,352.9	7,788.1	44,140.9	44,955.5	4,888.8	49,844.3	-1,624.7	86,082.6
2016	16,363.5	2,421.1	18,784.6	1,093.2	39,652.0	3,676.6	44,421.7	17,626.2	11,661.6	1,971.7	410.2	31,669.7	-154.8	-2,473.1	655.7	-1,972.2	92,903.8	36,474.7	8,117.4	44,592.1	41,551.7	5,764.0	47,315.7	-382.7	89,797.5
2017	16,769.8	2,579.2	19,349.0	1,128.8	41,905.4	3,604.6	46,638.8	18,332.4	8,469.6	1,486.0	417.0	28,704.9	470.8	53.7	-2,740.0	-2,215.6	92,477.2	33,253.1	5,409.0	38,662.1	29,260.9	6,805.9	36,066.8	-3,155.7	91,916.8
2004 Q1	2,469.8	420.1	2,889.9	197.2	3,606.9	507.5	4,311.6	2,198.2	957.4	308.4	57.4	3,521.4	19.5	107.3	353.8	480.6	11,203.5	5,246.3	1,311.1	6,557.4	3,969.3	1,550.0	5,519.3	-67.6	12,174.0
Q2	2,282.8	356.3	2,639.2	203.1	3,584.2	457.1	4,244.4	2,204.1	1,131.4	253.5	55.9	3,644.8	32.9	-242.9	361.8	151.8	10,680.1	4,411.1	724.1	5,135.2	3,890.3	1,018.4	4,908.7	1,446.5	12,353.1
Q3	2,487.8	348.3	2,836.0	213.4	3,520.7	675.3	4,409.5	2,271.6	1,013.1	267.3	56.4	3,608.4	14.7	211.8	132.7	359.2	11,213.1	5,956.2	814.3	6,770.5	4,219.0	1,275.6	5,494.6	1,237.4	13,726.4
Q4	2,455.5	374.4	2,829.9	223.9	3,833.4	602.9	4,660.2	2,083.7	1,065.8	235.2	55.8	3,440.5	8.9	115.0	130.1	254.0	11,184.6	5,459.1	1,416.3	6,875.4	4,249.7	1,007.9	5,257.6	1,111.7	13,914.2
2005 Q1	2,637.3	455.2	3,092.5	245.7	4,241.5	488.6	4,975.8	2,240.6	1,061.0	382.2	59.4	3,743.3	13.9	-367.0	291.6	-61.6	11,750.0	6,506.6	1,376.9	7,883.4	3,850.1	1,411.9	5,262.0	-1,531.9	12,839.5
Q2	1,907.2	340.8	2,247.9	251.6	3,787.2	587.3	4,626.2	2,264.6	944.5	191.3	59.6	3,460.1	17.1	-146.8	327.2	197.5	10,531.7	5,517.6	609.9	6,127.5	3,784.4	1,150.6	4,935.1	1,295.8	13,019.9
Q3	2,105.1	363.0	2,468.1	257.9	4,047.0	598.6	4,903.5	2,318.4	1,027.5	206.7	68.7	3,621.3	33.3	93.0	291.3	417.5	11,410.4	7,673.6	1,054.4	8,728.0	3,857.9	1,217.0	5,074.8	-878.8	14,184.8
Q4	2,268.9	409.8	2,678.8	266.9	4,176.5	576.1	5,019.5	2,366.6	1,029.8	194.7	64.1	3,655.2	16.4	3.4	326.7	346.5	11,699.9	5,621.4	1,587.4	7,208.8	3,811.3	1,051.6	4,862.9	454.8	14,500.6
2006 Q1	2,173.8	397.2	2,571.0	302.8	4,669.8	426.7	5,399.3	2,591.2	814.0	279.5	73.3	3,758.0	33.8	-908.7	199.1	-675.8	11,052.5	6,222.0	1,309.2	7,531.2	3,344.2	1,361.2	4,705.4	527.1	14,405.4
Q2	2,013.9	385.2	2,399.1	300.2	4,344.4	708.4	5,353.0	2,566.2	922.3	263.3	70.6	3,822.4	26.4	5,494.3	203.9	5,724.7	17,299.2	6,123.0	652.5	6,775.5	3,713.0	1,018.9	4,731.9	-4,970.5	14,372.3
Q3	2,130.6	387.3	2,517.9	312.5	5,179.1	623.3	6,114.8	2,611.3	1,140.3	289.2	77.4	4,118.1	59.7	-7,515.1	229.3	-7,226.1	5,524.7	6,134.3	911.9	7,046.2	4,059.6	1,357.0	5,416.6	8,198.8	15,353.1
Q4	2,184.1	398.4	2,582.5	301.5	5,029.6	694.5	6,025.6	2,162.1	1,219.0	327.7	79.2	3,788.0	40.7	1,765.4	195.9	2,002.1	14,398.2	7,906.8	1,626.4	9,533.2	4,154.6	1,135.2	5,289.8	-3,665.4	14,976.1
2007 Q1	2,275.5	401.6	2,677.0	308.7	4,843.2	749.4	5,901.3	2,272.3	1,010.9	395.2	111.8	3,790.3	33.6	-612.9	328.6	-250.6	12,117.9	8,483.5	1,336.2	9,819.7	4,022.6	1,635.4	5,657.9	-944.6	15,335.1
Q2	2,061.3	390.9	2,452.2	308.8	5,232.4	724.4	6,265.6	2,507.7	1,246.2	494.4	72.9	4,321.2	40.5	867.8	352.7	1,261.1	14,300.1	6,696.6	604.2	7,300.8	4,727.3	1,154.7	5,882.0	369.0	16,088.0
Q3	2,249.6	419.4	2,669.0	354.8	5,794.4	720.7	6,869.9	2,883.9	1,278.1	391.1	86.4	4,639.4	34.2	-962.5	346.9	-581.4	13,596.9	8,417.3	1,262.2	9,679.5	4,885.1	1,471.4	6,356.5	-602.4	16,317.6
Q4	2,212.0	414.9	2,626.9	353.8	6,082.7	851.7	7,288.3	2,605.0	1,366.1	438.0	83.7	4,492.9	17.0	197.8	319.6	534.4	14,942.5	5,066.4	1,639.1	6,705.5	5,776.9	1,497.4	7,274.3	1,884.7	16,258.4
2008 Q1	2,478.5	417.8	2,896.3	308.5	5,905.1	840.4	7,054.0	2,194.6	1,483.9	500.6	46.9	4,226.0	33.8	-192.6	1,419.6	1,260.9	15,437.1	8,262.0	1,565.7	9,827.7	5,776.8	1,464.1	7,240.9	-1,626.0	16,397.8
Q2	2,076.3	418.9	2,495.2	250.7	6,098.8	916.9	7,266.4	2,385.1	1,528.2	577.6	59.0	4,549.8	34.8	392.9	-214.0	213.7	14,525.1	6,932.1	1,074.4	8,006.5	6,272.6	1,133.1	7,405.7	1,939.5	17,065.3
Q3	2,263.8	448.7	2,712.5	256.9	7,286.9	882.9	8,426.7	2,289.2	1,528.2	543.3	67.0	4,427.7	27.2	-400.4	258.8	-114.3	15,452.5	8,634.0	1,370.8	10,004.8	6,473.4	1,103.5	7,576.9	-272.8	17,607.6
Q4	2,375.1	465.9	2,841.0	265.9	6,897.0	958.3	8,121.3	2,344.4	1,581.5	630.1	59.4	4,615.4	61.4	1,002.0	349.0	1,412.4	16,990.0	3,727.4	1,108.4	4,835.8	6,143.4	1,219.6	7,363.0	2,462.4	16,925.3
2009 Q1	2,648.1	460.7	3,108.8	267.8	6,591.8	814.8	7,674.5	2,600.7	1,403.8	718.2	56.1	4,778.8	42.6	-47.4	388.7	383.8	15,945.9	3,519.0	350.2	3,869.2	5,274.9	1,133.6	6,408.5	1,437.1	14,843.7
Q2	2,231.3	420.5	2,651.8	265.6	6,033.6	1,037.4	7,336.6	2,890.8	1,617.7	503.2	70.5	5,082.2	51.8	-286.0	393.6	159.4	15,230.1	5,021.7	504.7	5,526.3	5,409.2	1,252.9	6,662.2	1,717.3	15,811.5
Q3	2,331.6	436.7	2,768.3	276.4	7,898.3	814.4	8,989.0	2,821.6	1,442.3	434.6	80.1	4,778.6	62.4	-3.2	374.0	433.2	16,969.2	5,212.6	453.3	5,665.8	5,558.1	1,172.9	6,730.9	-121.3	15,782.8
Q4	2,309.4	430.8	2,740.3	266.7	7,501.0	808.6	8,576.3	2,466.0	1,639.6	693.7	71.0	4,870.2	52.6	36.0	404.6	493.3	16,680.0	4,923.8	380.8	5,304.6	5,495.3	1,069.4	6,564.8	935.0	16,354.8
2010 Q1	2,558.3	429.9	2,988.2	264.5	6,797.4	825.6	7,887.5	2,722.2	1,718.2	657.5	59.3	5,157.2	23.1	473.4	406.8	903.3	16,936.3	5,307.8	396.7	5,704.5	5,569.7	1,059.6	6,629.3	492.6	16,504.1
Q2	2,577.0	431.4	3,008.4	264.6	7,478.7	801.6	8,544.9	2,965.1	1,678.4	474.9	74.6	5,193.0	37.3	744.3	436.0	1,217									

Table 6 Continued: Gross Domestic Product by Type of Expenditure at Constant Prices (P million)

Calendar year	Government Final Consumption			Non-Profit Institutions	Household Final Consumption			Gross Fixed Capital Formation					Change in Inventories				Gross Domestic Expenditure	Exports			Imports			Errors & Omissions	Total GDP
	Central Govt	Local Govt	Total		Household Consumption (Mkt)	Household Consumption (Non-Mkt)	Total	Construction	Machinery & Equipment	Transport Equipment	Mineral Prospecting	Total	Livestock	Minerals	Others	Total		Goods	Services	Total	Goods	Services	Total		
2012 Q1	2,904.7	443.3	3,348.0	303.2	6,879.5	753.1	7,935.9	3,597.6	2,187.9	719.0	80.5	6,585.0	60.1	349.4	430.4	839.8	18,708.7	6,601.2	1,332.7	7,933.9	8,652.5	1,026.3	9,678.8	1,721.8	18,685.5
Q2	2,311.6	465.1	2,776.7	324.8	8,661.6	711.0	9,697.4	3,310.9	2,438.4	751.9	64.2	6,565.4	64.1	-53.3	381.1	391.8	19,431.3	6,864.9	1,327.6	8,192.5	8,505.6	1,086.4	9,592.0	550.6	18,582.4
Q3	3,071.8	493.5	3,565.3	259.8	8,850.7	653.0	9,763.5	3,589.8	2,590.6	730.1	90.2	7,000.7	59.9	-498.8	417.6	-21.3	20,308.2	8,825.5	1,326.7	10,152.2	12,694.7	1,253.3	13,947.9	1,927.8	18,440.3
Q4	3,941.7	510.6	4,452.3	239.6	9,281.6	736.1	10,257.3	3,642.2	2,565.3	707.3	75.2	6,990.0	33.5	357.1	386.8	777.4	22,477.0	7,777.6	1,459.0	9,236.5	10,159.6	831.4	10,991.0	-916.0	19,806.6
2013 Q1	3,687.5	524.5	4,212.0	244.1	9,698.6	780.0	10,722.7	3,875.9	1,987.5	507.6	95.7	6,466.6	-47.2	-2,461.5	364.2	-2,144.5	19,256.8	11,238.1	1,376.5	12,614.6	9,985.5	1,164.5	11,150.0	-213.4	20,508.0
Q2	3,313.7	526.4	3,840.1	245.2	9,057.5	980.4	10,283.1	3,919.5	2,564.7	615.6	96.6	7,196.3	-22.3	-798.9	924.9	103.7	21,423.3	9,410.2	1,701.4	11,111.6	10,874.3	1,303.6	12,178.0	574.9	20,931.9
Q3	3,219.5	530.4	3,749.9	248.5	8,869.7	841.3	9,959.5	3,960.7	2,436.4	411.2	97.1	6,905.4	-14.2	23.3	-504.8	-495.7	20,119.1	11,960.5	1,764.9	13,725.3	10,927.0	1,326.4	12,253.4	-673.9	20,917.2
Q4	3,838.7	536.7	4,375.3	252.0	9,409.8	828.4	10,490.2	3,991.0	2,502.6	529.3	97.8	7,120.7	-22.9	494.5	571.3	1,042.9	23,029.1	9,762.0	1,727.0	11,489.0	11,949.0	1,106.5	13,055.5	261.1	21,723.7
2014 Q1	3,895.3	555.2	4,450.5	254.4	9,764.2	828.7	10,847.3	4,036.1	2,406.2	529.2	98.0	7,069.5	-48.4	-328.4	-137.5	-514.3	21,853.1	10,280.8	1,790.7	12,071.5	11,270.5	1,210.6	12,481.1	-253.6	21,189.8
Q2	3,987.8	530.2	4,517.9	255.5	8,943.7	893.2	10,092.4	4,099.6	2,168.3	577.6	98.1	6,943.5	-47.0	-182.4	-715.8	-945.2	20,608.6	12,500.3	1,746.8	14,247.1	11,162.2	1,117.6	12,279.8	-688.6	21,887.3
Q3	3,872.2	536.1	4,408.3	258.1	8,970.3	907.4	10,135.8	4,092.9	1,769.5	551.8	98.2	6,512.3	-18.7	425.8	-573.5	-166.4	20,890.1	11,929.5	1,843.9	13,773.4	10,765.7	1,122.3	11,888.0	-596.9	22,178.6
Q4	3,996.0	549.5	4,545.5	261.2	9,582.4	888.7	10,732.3	4,135.5	2,801.1	534.8	99.5	7,571.0	36.5	-485.2	-327.1	-775.8	22,073.0	10,763.6	1,870.8	12,634.4	10,717.1	1,345.8	12,062.9	-330.8	22,313.7
2015 Q1	3,982.7	570.7	4,553.3	262.9	9,914.7	885.6	11,063.3	4,139.6	2,403.6	462.5	102.3	7,108.0	118.5	53.7	-1,099.7	-927.5	21,797.1	11,508.7	1,746.1	13,254.8	11,078.1	1,206.9	12,285.1	-992.4	21,774.4
Q2	4,046.3	560.1	4,606.4	264.0	9,368.4	891.8	10,524.2	4,231.8	2,822.9	512.6	95.4	7,662.7	155.9	102.6	-907.1	-648.6	22,144.8	11,475.7	2,032.2	13,507.9	11,893.0	1,142.8	13,035.8	-796.1	21,820.8
Q3	3,953.6	570.3	4,523.8	266.4	9,747.5	881.0	10,894.9	4,273.1	3,076.9	522.9	98.4	7,971.4	148.6	101.7	753.4	1,003.7	24,393.9	6,472.5	2,054.0	8,526.5	11,154.9	1,079.0	12,233.9	284.6	20,971.1
Q4	4,112.7	575.6	4,688.3	268.5	9,809.7	890.0	10,968.2	4,276.1	2,874.5	561.7	102.0	7,814.3	96.5	2,370.9	-863.3	1,604.1	25,074.9	6,896.0	1,955.8	8,851.8	10,829.4	1,460.2	12,289.6	-120.7	21,516.4
2016 Q1	4,053.4	598.2	4,651.6	270.4	10,170.8	923.3	11,364.5	4,321.1	2,519.7	412.6	104.6	7,358.0	-0.3	-1,832.7	2,000.0	167.0	23,541.1	7,681.9	2,066.7	9,748.7	10,708.2	1,348.9	12,057.2	1,034.6	22,267.2
Q2	4,107.5	595.1	4,702.5	271.9	9,330.9	933.2	10,536.0	4,435.8	3,132.0	501.6	99.0	8,168.5	-54.4	-375.6	700.0	270.1	23,677.0	9,173.2	1,914.8	11,088.0	10,887.8	1,495.0	12,382.8	287.1	22,669.3
Q3	4,043.1	607.6	4,650.7	275.5	9,955.4	941.1	11,171.9	4,432.5	2,929.0	594.9	101.6	8,058.0	-65.7	-464.7	-1,655.0	-2,185.4	21,695.3	10,727.1	2,113.2	12,840.3	9,746.0	1,387.6	11,133.6	-989.3	22,412.7
Q4	4,159.5	620.3	4,779.8	275.5	10,194.8	878.9	11,349.3	4,436.8	3,080.9	462.6	105.0	8,085.3	-34.4	199.8	-389.3	-223.8	23,990.4	8,892.4	2,022.7	10,915.1	10,209.7	1,532.5	11,742.2	-715.1	22,448.3
2017 Q1	4,069.9	630.4	4,700.3	276.2	10,503.1	867.8	11,647.1	4,482.7	2,141.1	338.3	106.4	7,068.5	40.0	-2.9	-1,600.0	-1,562.9	21,853.0	9,345.6	1,351.1	10,696.6	6,986.0	1,501.1	8,487.1	-1,595.1	22,467.4
Q2	4,250.3	641.9	4,892.1	280.9	9,907.8	898.8	11,087.5	4,600.4	1,745.9	324.5	101.4	6,772.0	106.1	168.1	-590.0	-315.8	22,435.9	8,121.2	1,331.8	9,453.0	6,722.1	1,619.7	8,341.8	-654.0	22,893.2
Q3	4,150.5	649.8	4,800.2	285.0	10,681.7	922.2	11,888.9	4,604.4	2,233.3	349.1	103.2	7,289.9	150.8	-244.9	-100.0	-194.1	23,784.8	7,413.3	1,288.5	8,701.8	7,460.7	1,814.9	9,275.6	-551.4	22,659.7
Q4	4,299.2	657.2	4,956.3	286.7	10,823.1	915.8	12,025.7	4,644.9	2,343.6	510.2	106.1	7,604.7	173.8	133.4	-450.0	-142.8	24,443.9	8,465.8	1,437.6	9,903.4	8,253.4	1,907.4	10,160.8	-290.1	23,896.4
2018 Q1	4,236.8	663.2	4,900.0	287.3	10,958.1	909.3	12,154.8	4,658.0	2,142.3	383.9	108.4	7,292.6	175.4	29.9	-400.0	-194.7	24,152.7	7,890.1	1,340.4	9,230.5	7,054.4	1,744.5	8,798.9	-1,039.3	23,545.0
Q2	4,371.5	668.6	5,040.2	290.1	10,966.2	925.3	12,181.6	4,744.8	2,337.9	352.3	104.8	7,539.9	176.9	358.7	-590.0	-54.4	24,707.2	7,735.0	1,341.7	9,076.7	7,410.4	1,818.3	9,228.7	-456.2	24,099.0

Note: 2016 -2018 estimates are provisional